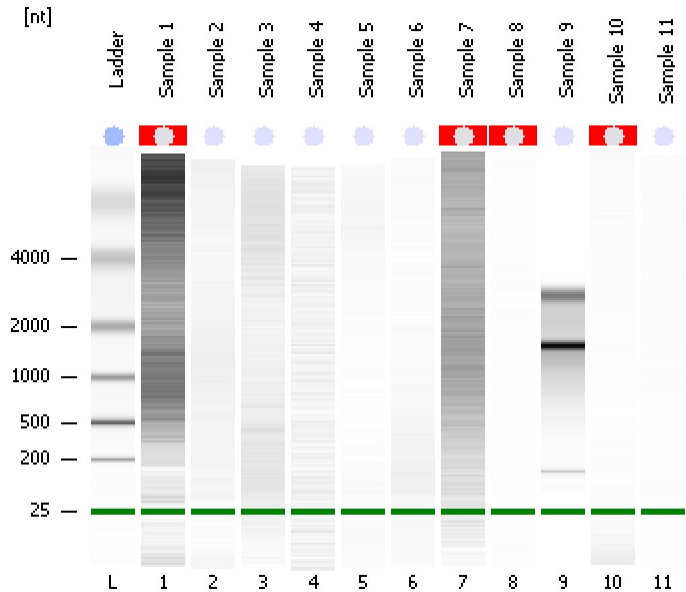


Assay Class: Plant RNA Pico
Data Path: C:\... bioanalyzer\2100 expert\data\2017-07-17\2017-07-17_003.xad

Created: 7/17/2017 3:34:46 PM
Modified: 7/17/2017 4:27:53 PM

Electrophoresis File Run Summary



Instrument Information:

Instrument Name: DE13701086 Firmware: C.01.069
Serial#: DE13701086 Type: G2938B

Assay Information:

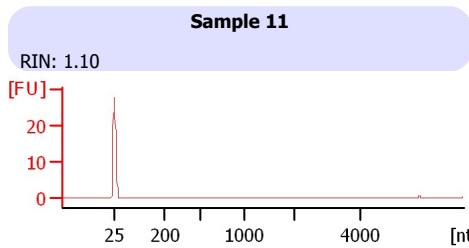
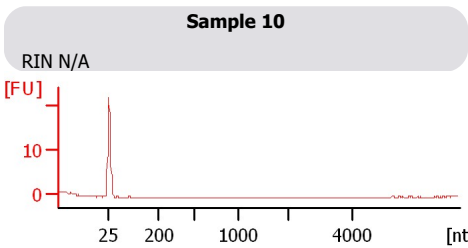
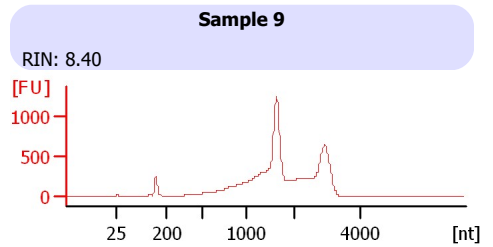
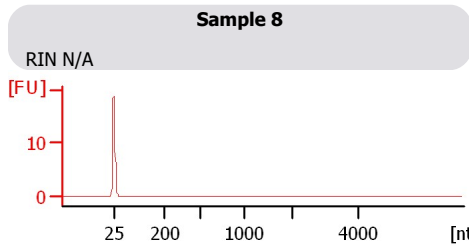
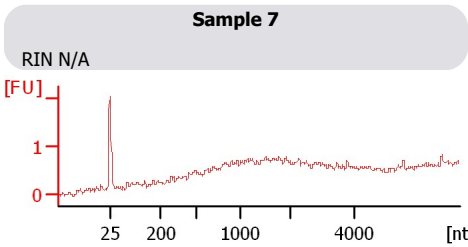
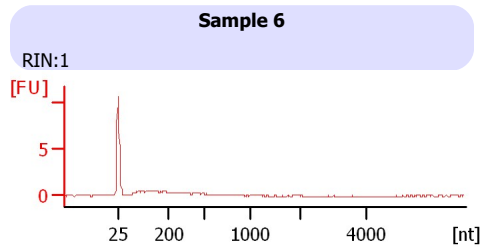
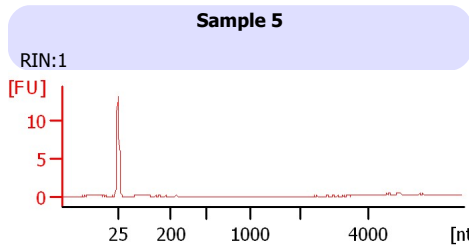
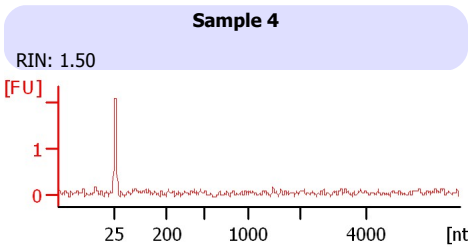
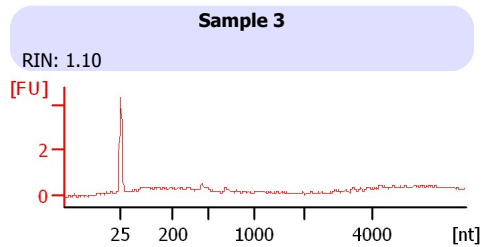
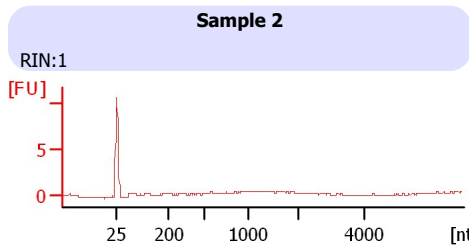
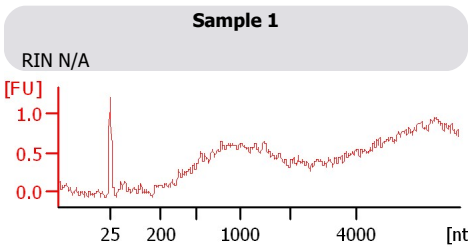
Assay Origin Path: C:\Program Files\Agilent\2100 bioanalyzer\2100 expert\assays\RNA\Plant RNA Pico.xsy

Assay Class: Plant RNA Pico
Version: 1.3
Assay Comments: Total RNA Analysis pg sensitivity (Plant)

© Copyright 2003 - 2009 Agilent Technologies, Inc.

Chip Information:

Chip Lot #:
Reagent Kit Lot #:
Chip Comments:



Assay Class: Plant RNA Pico
 Data Path: C:\... bioanalyzer\2100 expert\data\2017-07-17\2017-07-17_003.xad

Created: 7/17/2017 3:34:46 PM
 Modified: 7/17/2017 4:27:53 PM

Electrophoresis File Run Summary (Chip Summary)

Sample Name	Sample Comment	Status	Result Label	Result Color
Sample 1		✓	RIN N/A	
Sample 2		✓	RIN:1	
Sample 3		✓	RIN: 1.10	
Sample 4		✓	RIN: 1.50	
Sample 5		✓	RIN:1	
Sample 6		✓	RIN:1	
Sample 7		✓	RIN N/A	
Sample 8		✓	RIN N/A	
Sample 9		✓	RIN: 8.40	
Sample 10		✓	RIN N/A	
Sample 11		✓	RIN: 1.10	
Ladder		✓	All Other Samples	

Chip Lot #

Reagent Kit Lot #

Chip Comments :

Assay Class: Plant RNA Pico
Data Path: C:\... bioanalyzer\2100 expert\data\2017-07-17\2017-07-17_003.xad

Created: 7/17/2017 3:34:46 PM
Modified: 7/17/2017 4:27:53 PM

Electrophoresis Assay Details

General Analysis Settings

Number of Available Sample and Ladder Wells (Max.) : 12
Minimum Visible Range [s] : 17
Maximum Visible Range [s] : 70
Start Analysis Time Range [s] : 18
End Analysis Time Range [s] : 69
Ladder Concentration [pg/ μ l] : 1000
Lower Marker Concentration [pg/ μ l] : 0
Upper Marker Concentration [pg/ μ l] : 0
Used Lower Marker for Quantitation
Standard Curve Fit is Logarithmic
Show Data Aligned to Lower Marker

Integrator Settings

Integration Start Time [s] : 18
Integration End Time [s] : 69
Slope Threshold : 0.6
Height Threshold [FU] : 0.5
Area Threshold : 0.2
Width Threshold [s] : 0.3
Baseline Plateau [s] : 6

Filter Settings

Filter Width [s] : 0.5
Polynomial Order : 4

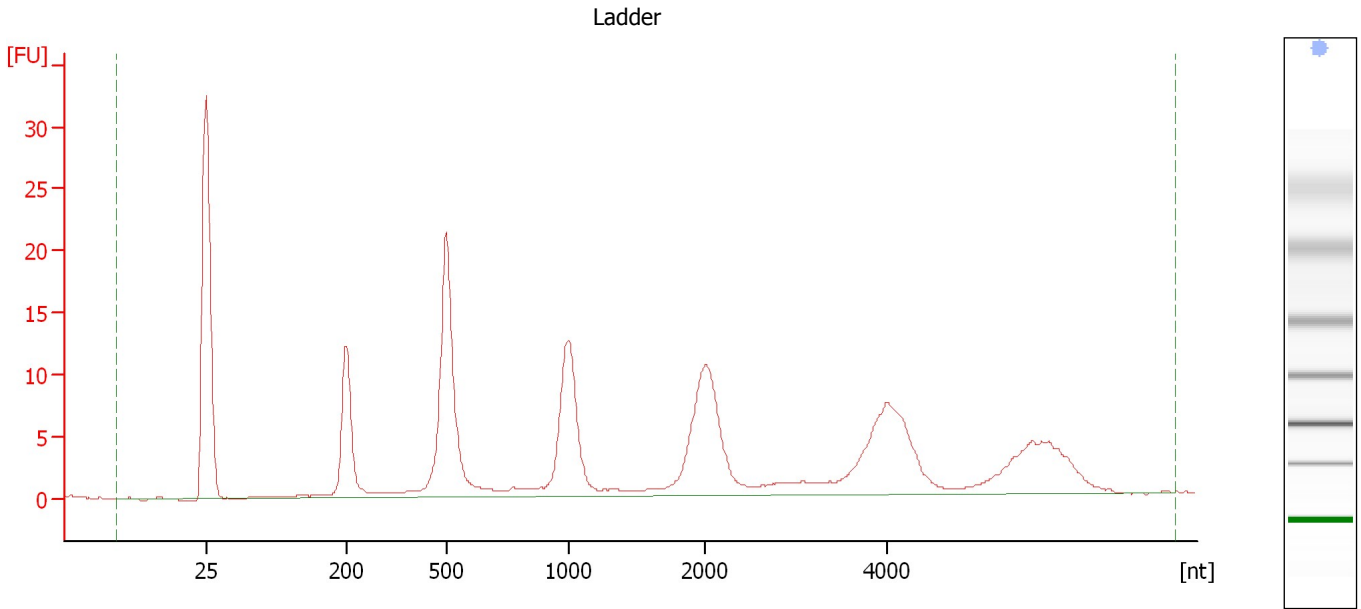
Ladder

Ladder Peak	Size
1	25
2	200
3	500
4	1000
5	2000
6	4000

Assay Class: Plant RNA Pico
Data Path: C:\... bioanalyzer\2100 expert\data\2017-07-17\2017-07-17_003.xad

Created: 7/17/2017 3:34:46 PM
Modified: 7/17/2017 4:27:53 PM

Electropherogram Summary



Overall Results for Ladder

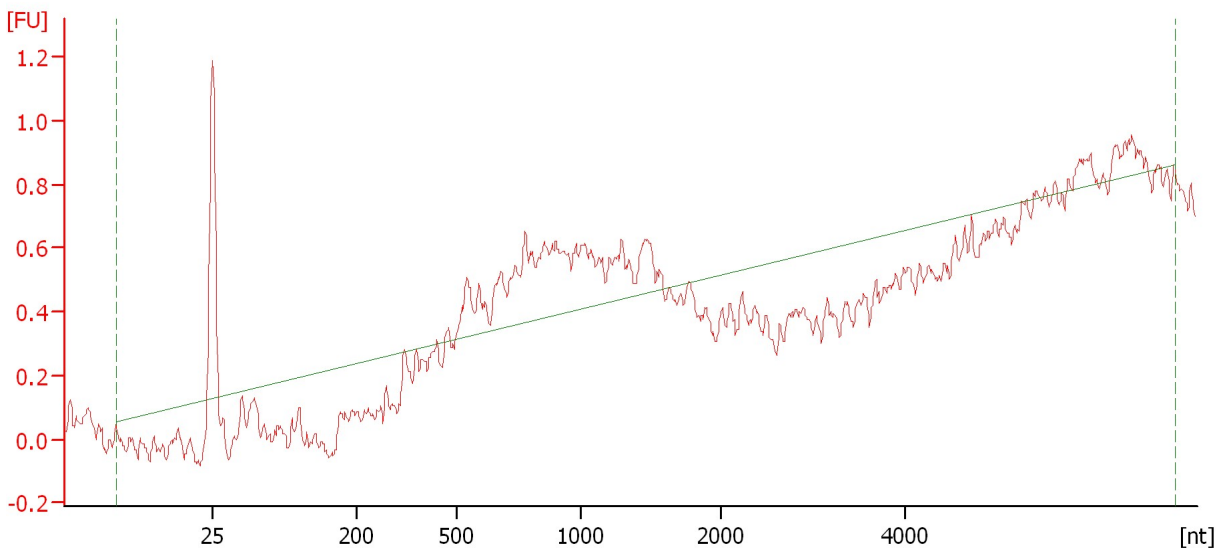
RNA Area:	210.6	Result Flagging Color:	
RNA Concentration:	1,000 pg/μl	Result Flagging Label:	All Other Samples

Assay Class: Plant RNA Pico
Data Path: C:\... bioanalyzer\2100 expert\data\2017-07-17\2017-07-17_003.xad


Created: 7/17/2017 3:34:46 PM
Modified: 7/17/2017 4:27:53 PM

Electropherogram Summary Continued ...

Sample 1



Overall Results for sample 1 : Sample 1

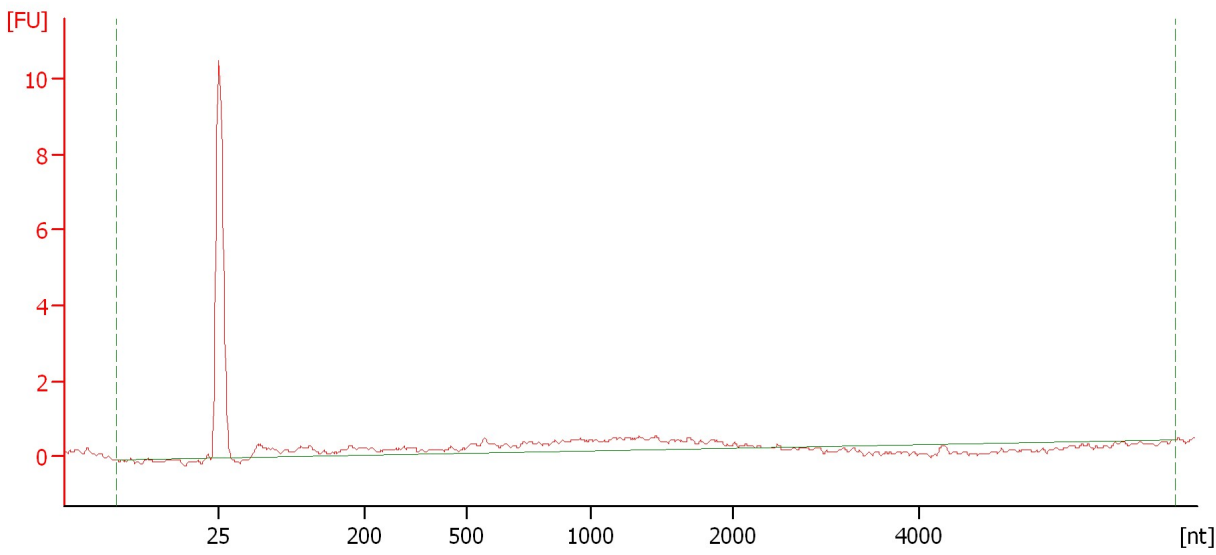
RNA Area:	3.8	RNA Integrity Number (RIN):	N/A (B.02.08)
RNA Concentration:	18 pg/μl	Result Flagging Color:	
rRNA Ratio [25s / 18s]:	0.0	Result Flagging Label:	RIN N/A

Assay Class: Plant RNA Pico
Data Path: C:\... bioanalyzer\2100 expert\data\2017-07-17\2017-07-17_003.xad

Created: 7/17/2017 3:34:46 PM
Modified: 7/17/2017 4:27:53 PM

Electropherogram Summary Continued ...

Sample 2



Overall Results for sample 2 : Sample 2

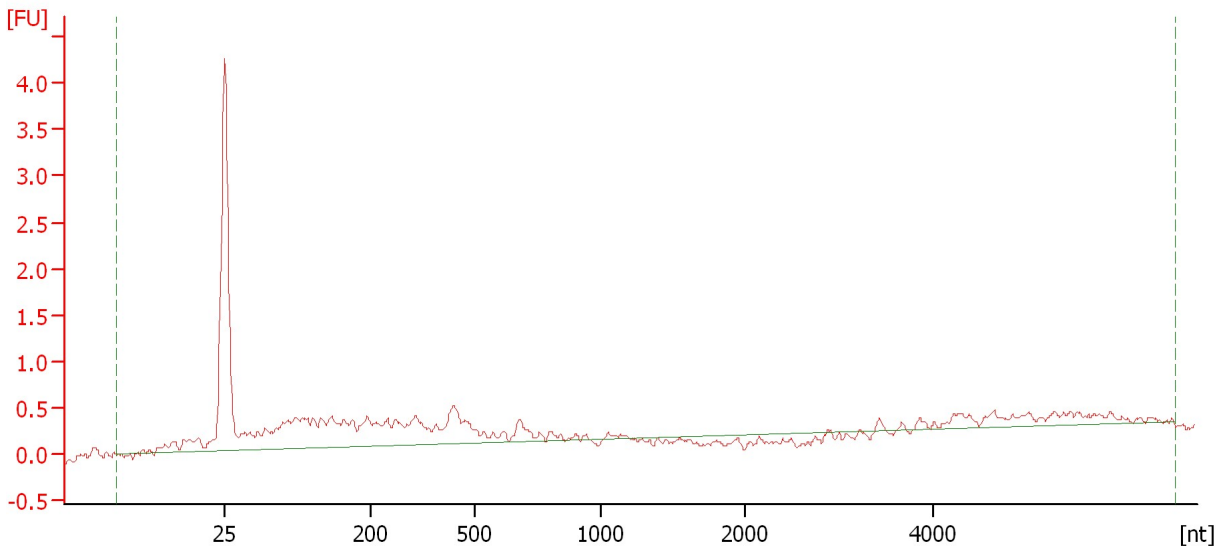
RNA Area:	13.1	RNA Integrity Number (RIN):	1 (B.02.08)
RNA Concentration:	62 pg/μl	Result Flagging Color:	
rRNA Ratio [25s / 18s]:	0.0	Result Flagging Label:	RIN:1

Assay Class: Plant RNA Pico
Data Path: C:\... bioanalyzer\2100 expert\data\2017-07-17\2017-07-17_003.xad

Created: 7/17/2017 3:34:46 PM
Modified: 7/17/2017 4:27:53 PM

Electropherogram Summary Continued ...

Sample 3



Overall Results for sample 3 : Sample 3

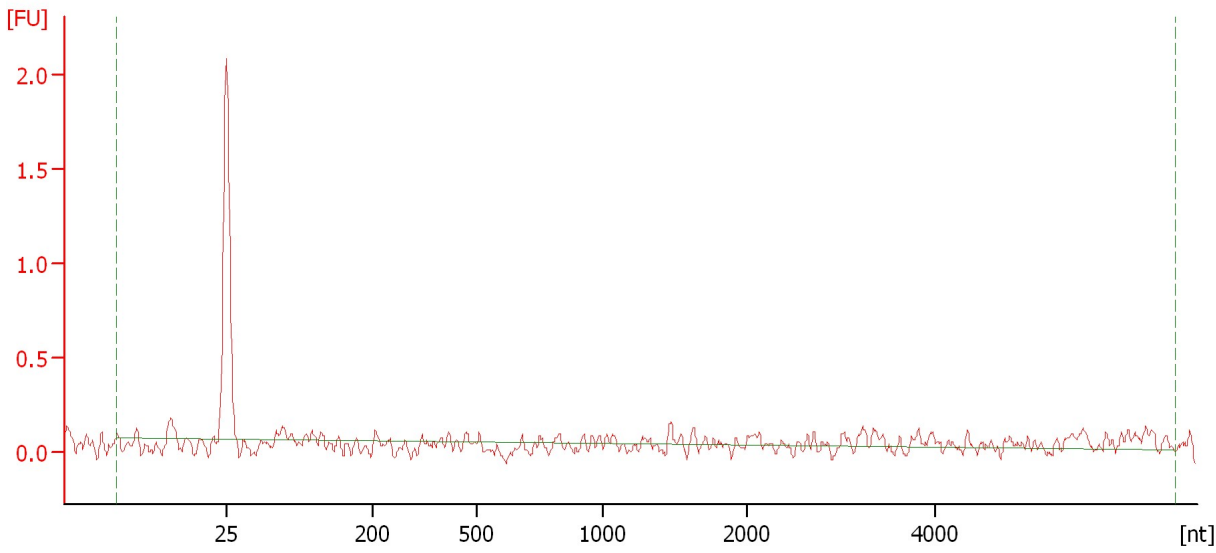
RNA Area:	13.2	RNA Integrity Number (RIN):	1.1 (B.02.08)
RNA Concentration:	62 pg/μl	Result Flagging Color:	
rRNA Ratio [25s / 18s]:	0.0	Result Flagging Label:	RIN: 1.10

Assay Class: Plant RNA Pico
Data Path: C:\... bioanalyzer\2100 expert\data\2017-07-17\2017-07-17_003.xad

Created: 7/17/2017 3:34:46 PM
Modified: 7/17/2017 4:27:53 PM

Electropherogram Summary Continued ...

Sample 4



Overall Results for sample 4 : Sample 4

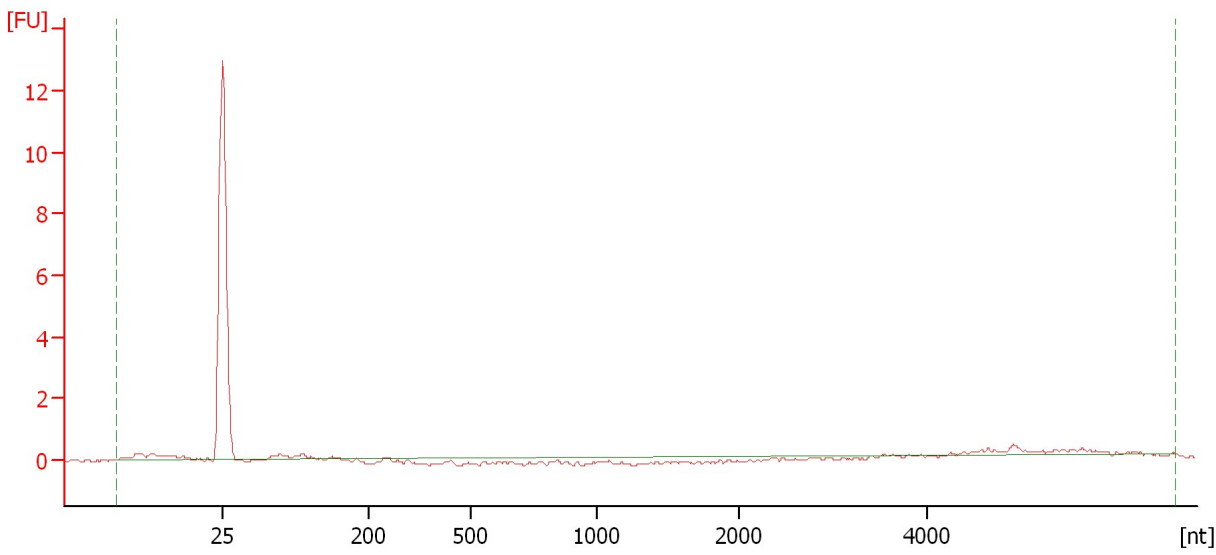
RNA Area:	1.7	RNA Integrity Number (RIN):	1.5 (B.02.08)
RNA Concentration:	8 pg/μl	Result Flagging Color:	
rRNA Ratio [25s / 18s]:	0.0	Result Flagging Label:	RIN: 1.50

Assay Class: Plant RNA Pico
Data Path: C:\... bioanalyzer\2100 expert\data\2017-07-17\2017-07-17_003.xad

Created: 7/17/2017 3:34:46 PM
Modified: 7/17/2017 4:27:53 PM

Electropherogram Summary Continued ...

Sample 5



Overall Results for sample 5 : Sample 5

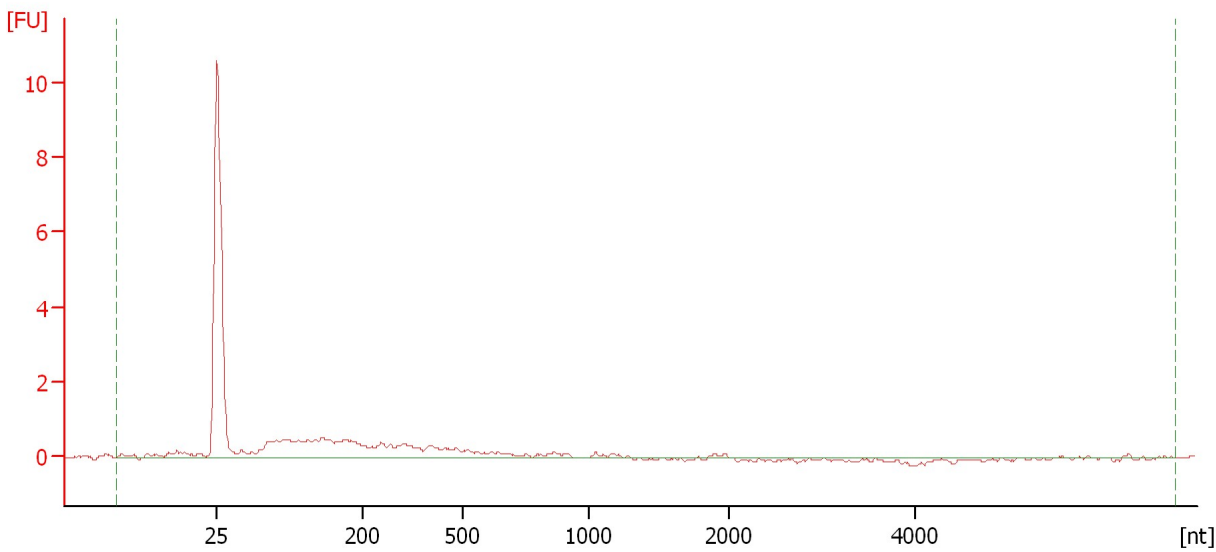
RNA Area:	3.4	RNA Integrity Number (RIN):	1 (B.02.08)
RNA Concentration:	16 pg/μl	Result Flagging Color:	
rRNA Ratio [25s / 18s]:	0.0	Result Flagging Label:	RIN:1

Assay Class: Plant RNA Pico
Data Path: C:\... bioanalyzer\2100 expert\data\2017-07-17\2017-07-17_003.xad

Created: 7/17/2017 3:34:46 PM
Modified: 7/17/2017 4:27:53 PM

Electropherogram Summary Continued ...

Sample 6



Overall Results for sample 6 : Sample 6

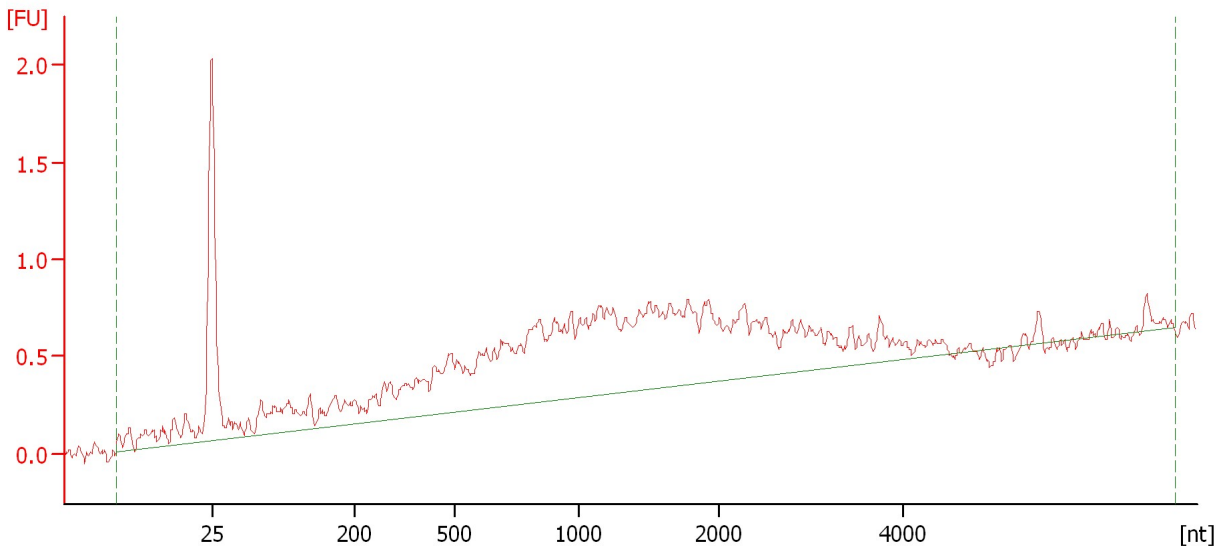
RNA Area:	15.2	RNA Integrity Number (RIN):	1 (B.02.08)
RNA Concentration:	72 pg/μl	Result Flagging Color:	
rRNA Ratio [25s / 18s]:	0.0	Result Flagging Label:	RIN:1

Assay Class: Plant RNA Pico
Data Path: C:\... bioanalyzer\2100 expert\data\2017-07-17\2017-07-17_003.xad


Created: 7/17/2017 3:34:46 PM
Modified: 7/17/2017 4:27:53 PM

Electropherogram Summary Continued ...

Sample 7



Overall Results for sample 7 : Sample 7

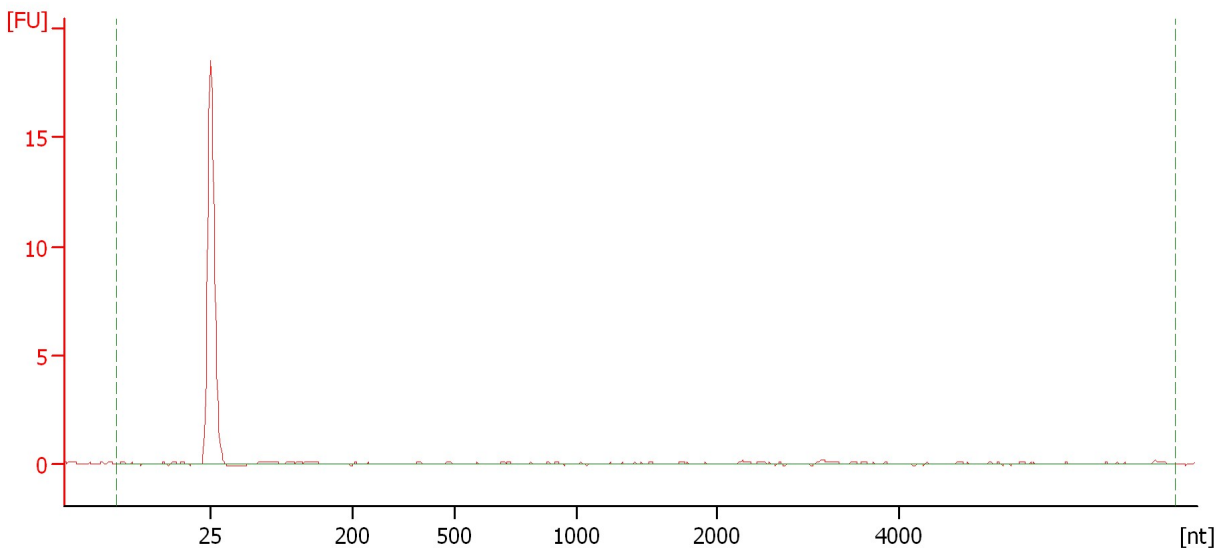
RNA Area:	19.4	RNA Integrity Number (RIN):	N/A (B.02.08)
RNA Concentration:	92 pg/μl	Result Flagging Color:	
rRNA Ratio [25s / 18s]:	0.0	Result Flagging Label:	RIN N/A

Assay Class: Plant RNA Pico
Data Path: C:\... bioanalyzer\2100 expert\data\2017-07-17\2017-07-17_003.xad

Created: 7/17/2017 3:34:46 PM
Modified: 7/17/2017 4:27:53 PM

Electropherogram Summary Continued ...

Sample 8



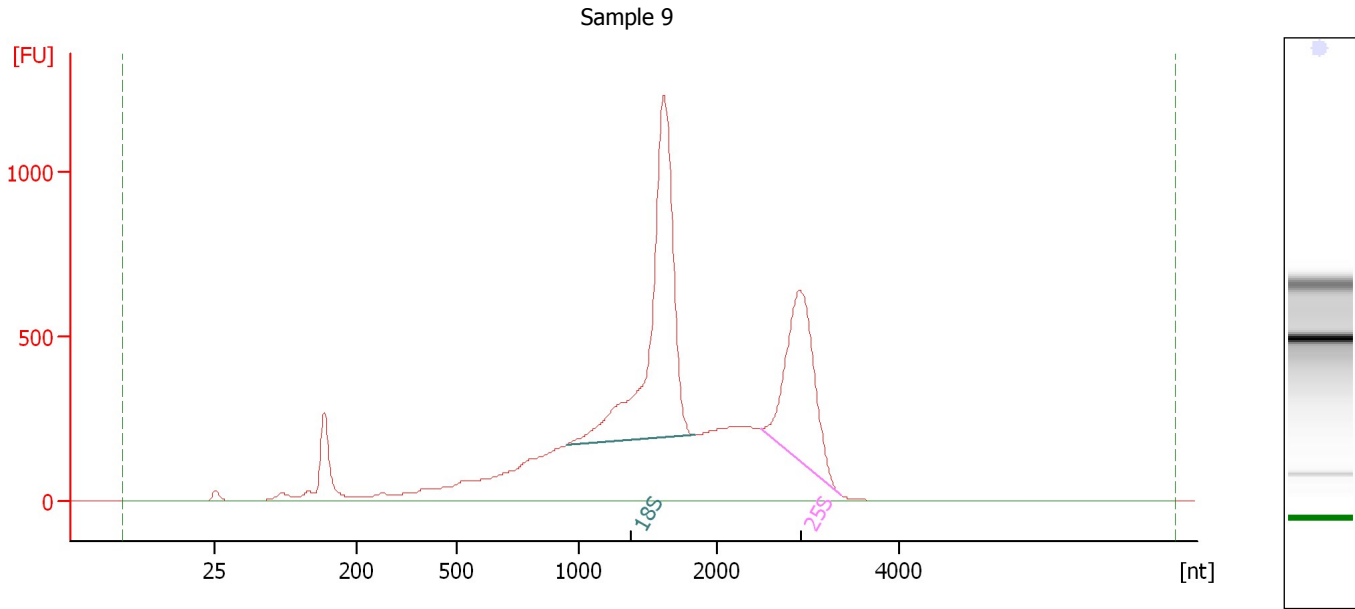
Overall Results for sample 8 : Sample 8

RNA Area:	2.4	RNA Integrity Number (RIN):	N/A (B.02.08)
RNA Concentration:	11 pg/μl	Result Flagging Color:	
rRNA Ratio [25s / 18s]:	0.0	Result Flagging Label:	RIN N/A

Assay Class: Plant RNA Pico
Data Path: C:\... bioanalyzer\2100 expert\data\2017-07-17\2017-07-17_003.xad

Created: 7/17/2017 3:34:46 PM
Modified: 7/17/2017 4:27:53 PM

Electropherogram Summary Continued ...



Overall Results for sample 9 : Sample 9

RNA Area: 11,687.4 RNA Integrity Number (RIN): 8.4 (B.02.08)
RNA Concentration: 55,485 pg/μl Result Flagging Color:
rRNA Ratio [25s / 18s]: 0.5 Result Flagging Label: RIN: 8.40

Fragment table for sample 9 : Sample 9

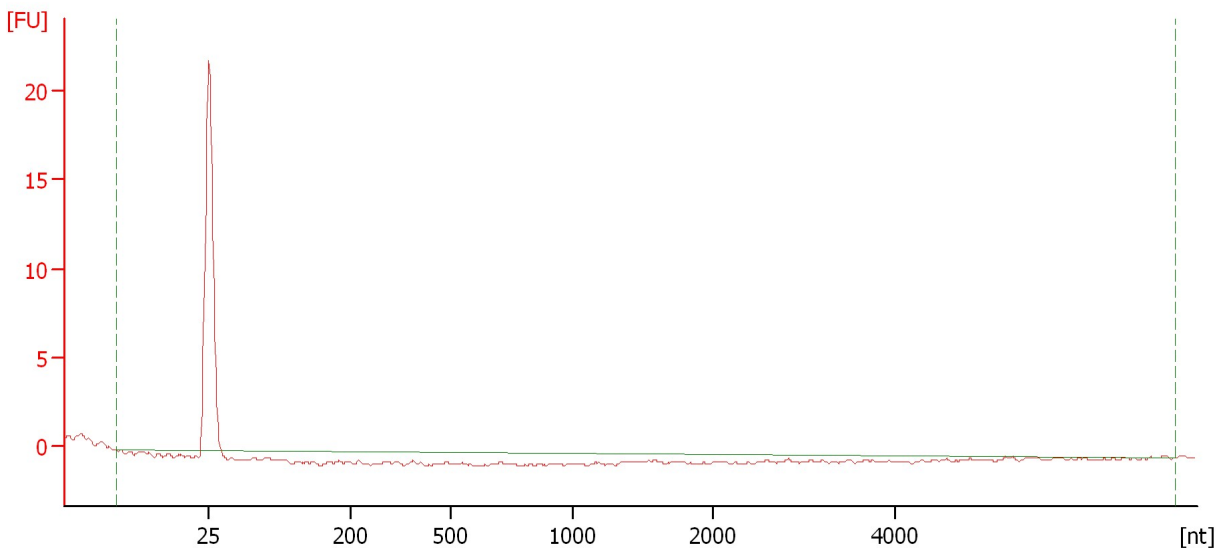
Name	Start Size [nt]	End Size [nt]	Area	% of total Area
18S	952	1,838	2,913.6	24.9
25S	2,490	3,353	1,545.1	13.2

Assay Class: Plant RNA Pico
Data Path: C:\... bioanalyzer\2100 expert\data\2017-07-17\2017-07-17_003.xad

Created: 7/17/2017 3:34:46 PM
Modified: 7/17/2017 4:27:53 PM

Electropherogram Summary Continued ...

Sample 10



Overall Results for sample 10 : Sample 10

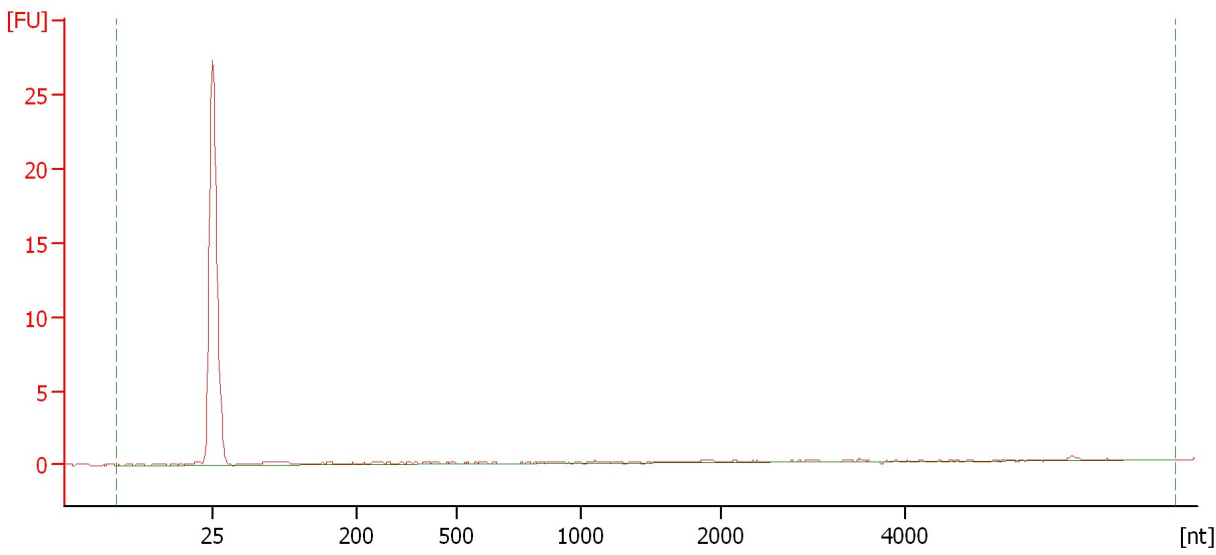
RNA Area:	0.1	RNA Integrity Number (RIN):	N/A (B.02.08)
RNA Concentration:	1 pg/μl	Result Flagging Color:	
rRNA Ratio [25s / 18s]:	0.0	Result Flagging Label:	RIN N/A

Assay Class: Plant RNA Pico
Data Path: C:\... bioanalyzer\2100 expert\data\2017-07-17\2017-07-17_003.xad

Created: 7/17/2017 3:34:46 PM
Modified: 7/17/2017 4:27:53 PM

Electropherogram Summary Continued ...

Sample 11



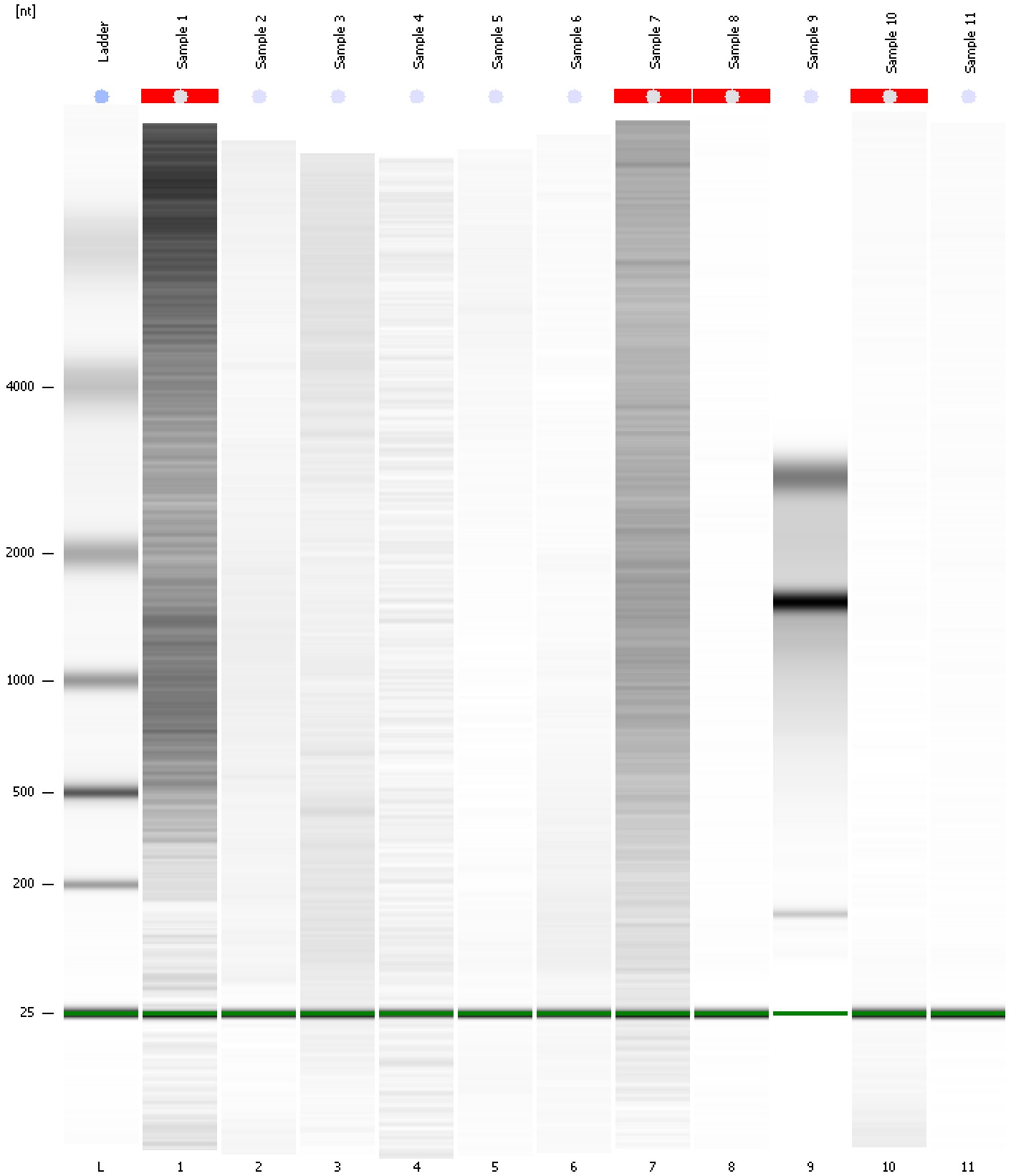
Overall Results for sample 11 : Sample 11

RNA Area:	6.6	RNA Integrity Number (RIN):	1.1 (B.02.08)
RNA Concentration:	31 pg/μl	Result Flagging Color:	
rRNA Ratio [25s / 18s]:	0.0	Result Flagging Label:	RIN: 1.10

Assay Class: Plant RNA Pico
Data Path: C:\... bioanalyzer\2100 expert\data\2017-07-17\2017-07-17_003.xad

Created: 7/17/2017 3:34:46 PM
Modified: 7/17/2017 4:27:53 PM

Gel Image



Assay Class: Plant RNA Pico
Data Path: C:\... bioanalyzer\2100 expert\data\2017-07-17\2017-07-17_003.xad

Created: 7/17/2017 3:34:46 PM
Modified: 7/17/2017 4:27:53 PM

Curves

Standard Curve

