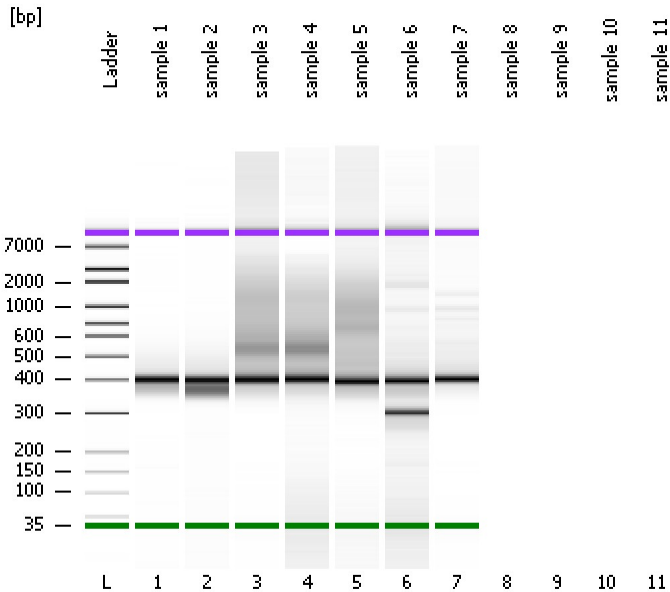


Assay Class: High Sensitivity DNA Assay
Data Path: C:\... bioanalyzer\2100 expert\data\2017-07-18\2017-07-18_002.xad

Created: 7/18/2017 10:54:54 AM
Modified: 7/18/2017 11:24:41 AM

Electrophoresis File Run Summary



Instrument Information:

Instrument Name: DE13701086 Firmware: C.01.069
Serial#: DE13701086 Type: G2938B

Assay Information:

Assay Origin Path: C:\Program Files\Agilent\2100 bioanalyzer\2100 expert\assays\dsDNA\High Sensitivity DNA.xsy
Assay Class: High Sensitivity DNA Assay
Version: 1.03
Assay Comments: Copyright © 2003-2010 Agilent Technologies

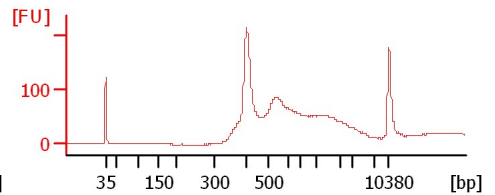
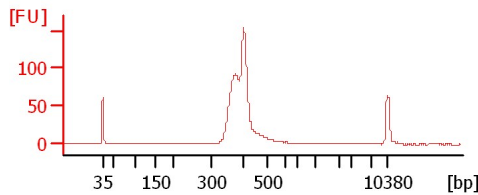
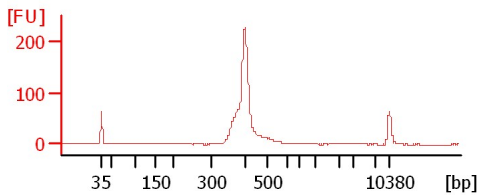
Chip Information:

Chip Lot #: Reagent Kit Lot #: Chip Comments:

sample 1

sample 2

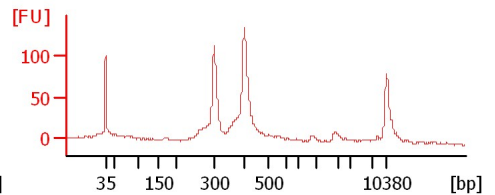
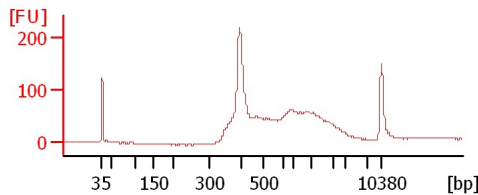
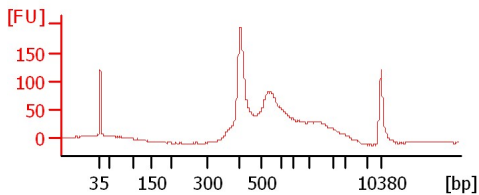
sample 3



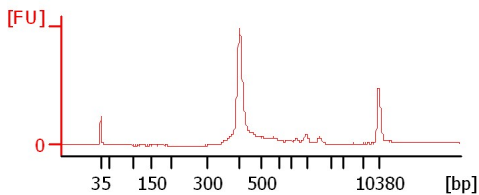
sample 4

sample 5

sample 6



sample 7



Assay Class: High Sensitivity DNA Assay
 Data Path: C:\... bioanalyzer\2100 expert\data\2017-07-18\2017-07-18_002.xad

Created: 7/18/2017 10:54:54 AM
 Modified: 7/18/2017 11:24:41 AM

Electrophoresis File Run Summary (Chip Summary)

Sample Name	Sample Comment	Rest. Digest	Status	Observation	Result Label	Result Color
sample 1		<input type="checkbox"/>	✓			
sample 2		<input type="checkbox"/>	✓			
sample 3		<input type="checkbox"/>	✓			
sample 4		<input type="checkbox"/>	✓			
sample 5		<input type="checkbox"/>	✓			
sample 6		<input type="checkbox"/>	✓			
sample 7		<input type="checkbox"/>	✓			
sample 8		<input type="checkbox"/>				
sample 9		<input type="checkbox"/>				
sample 10		<input type="checkbox"/>				
sample 11		<input type="checkbox"/>				
Ladder		<input type="checkbox"/>	✓			

Chip Lot #

Reagent Kit Lot #

Chip Comments :

Assay Class: High Sensitivity DNA Assay
Data Path: C:\... bioanalyzer\2100 expert\data\2017-07-18\2017-07-18_002.xad

Created: 7/18/2017 10:54:54 AM
Modified: 7/18/2017 11:24:41 AM

Electrophoresis Assay Details

General Analysis Settings

Number of Available Sample and Ladder Wells (Max.) : 12
Minimum Visible Range [s] : 32
Maximum Visible Range [s] : 138
Start Analysis Time Range [s] : 33
End Analysis Time Range [s] : 137.5
Ladder Concentration [pg/μl] : 1950
Uses Standard Area for Ladder Fragments
Lower Marker Concentration [pg/μl] : 125
Upper Marker Concentration [pg/μl] : 75
Used Upper Marker for Quantitation
Standard Curve Fit is Point to Point
Show Data Aligned to Lower and Upper Marker

Integrator Settings

Integration Start Time [s] : 33.05
Integration End Time [s] : 137
Slope Threshold : 0.8
Height Threshold [FU] : 5
Area Threshold : 0.1
Width Threshold [s] : 0.6
Baseline Plateau [s] : 0.5

Filter Settings

Filter Width [s] : 0.5
Polynomial Order : 4

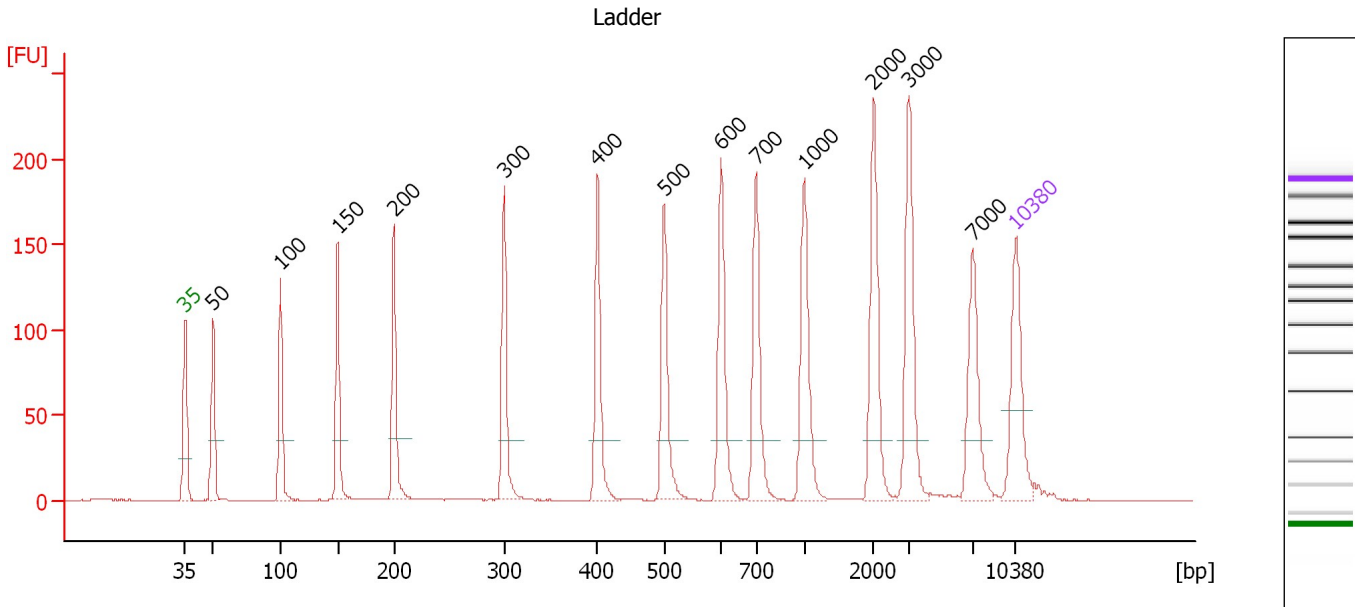
Ladder

Ladder Peak	Size	Area
1	35	160
2	50	210
3	100	208
4	150	221
5	200	242
6	300	270
7	400	305
8	500	306
9	600	336
10	700	321
11	1000	366
12	2000	413
13	3000	411
14	7000	400
15	10380	214

Assay Class: High Sensitivity DNA Assay
 Data Path: C:\... bioanalyzer\2100 expert\data\2017-07-18\2017-07-18_002.xad

Created: 7/18/2017 10:54:54 AM
 Modified: 7/18/2017 11:24:41 AM

Electropherogram Summary



Overall Results for Ladder

Noise: 0.2

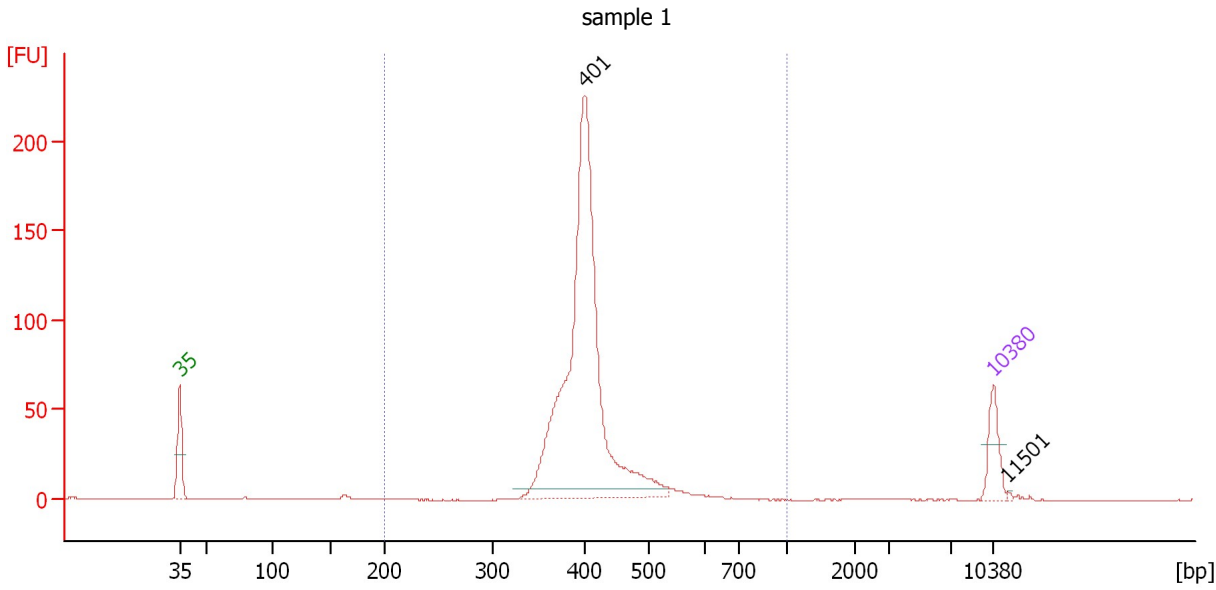
Peak table for Ladder

Peak	Size [bp]	Conc. [pg/μl]	Molarity [pmol/l]	Observations	Aligned Migration Time [s]
1	35	125.00	5,411.3	Lower Marker	43.00
2	50	150.00	4,545.5	Ladder Peak	45.38
3	100	150.00	2,272.7	Ladder Peak	51.04
4	150	150.00	1,515.2	Ladder Peak	55.89
5	200	150.00	1,136.4	Ladder Peak	60.61
6	300	150.00	757.6	Ladder Peak	69.91
7	400	150.00	568.2	Ladder Peak	77.78
8	500	150.00	454.5	Ladder Peak	83.39
9	600	150.00	378.8	Ladder Peak	88.20
10	700	150.00	324.7	Ladder Peak	91.12
11	1,000	150.00	227.3	Ladder Peak	95.21
12	2,000	150.00	113.6	Ladder Peak	101.05
13	3,000	150.00	75.8	Ladder Peak	104.01
14	7,000	150.00	32.5	Ladder Peak	109.41
15	10,380	75.00	10.9	Upper Marker	113.00

Assay Class: High Sensitivity DNA Assay
 Data Path: C:\... bioanalyzer\2100 expert\data\2017-07-18\2017-07-18_002.xad

Created: 7/18/2017 10:54:54 AM
 Modified: 7/18/2017 11:24:41 AM

Electropherogram Summary Continued ...



Overall Results for sample 1 : sample 1

Number of peaks found: 2 Corr. Area 1: 871.7
 Noise: 0.2

Peak table for sample 1 : sample 1

Peak	Size [bp]	Conc. [pg/μl]	Molarity [pmol/l]	Observations	Aligned Migration Time [s]
1	35	125.00	5,411.3	Lower Marker	43.00
2	401	1,493.65	5,641.6		77.84
3	10,380	75.00	10.9	Upper Marker	113.00
4	11,501	0.00	0.0		114.19

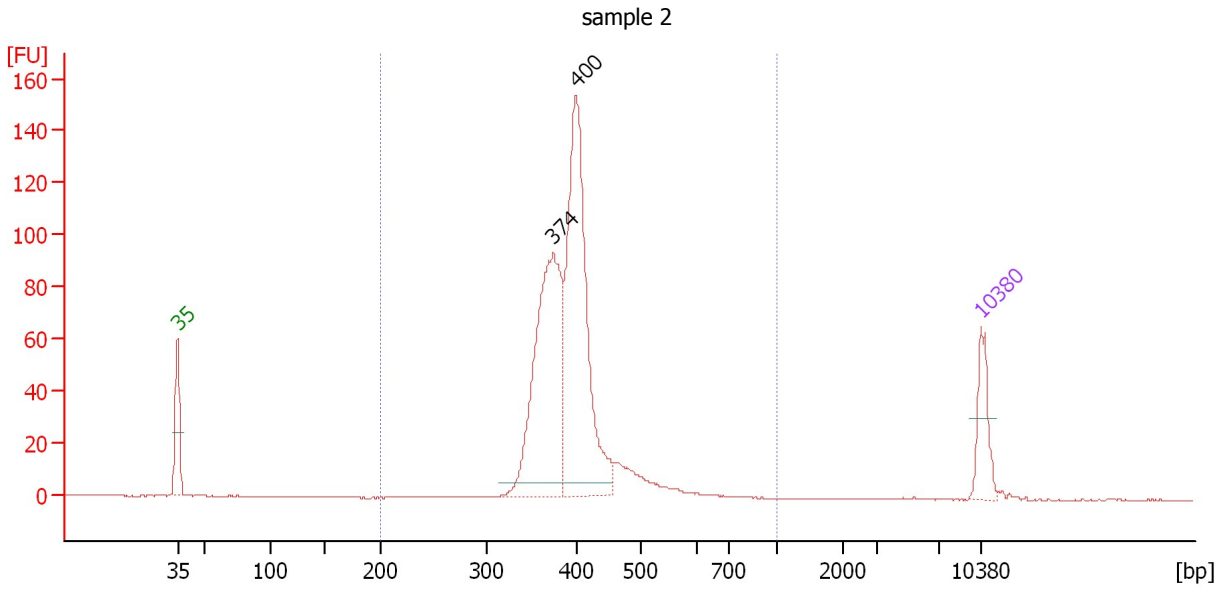
Region table for sample 1 : sample 1

From [bp]	To [bp]	Average Size [bp]	Corr. Area	Molarity [pmol/l]	Co Conc. lor [pg/μl]	% of Total	Size distribution in CV [%]
200	1,000	409	871.7	5,786.9	1,545.49	99	10.3

Assay Class: High Sensitivity DNA Assay
 Data Path: C:\... bioanalyzer\2100 expert\data\2017-07-18\2017-07-18_002.xad

Created: 7/18/2017 10:54:54 AM
 Modified: 7/18/2017 11:24:41 AM

Electropherogram Summary Continued ...



Overall Results for sample 2 : sample 2

Number of peaks found: 2 Corr. Area 1: 825.3
 Noise: 0.1

Peak table for sample 2 : sample 2

Peak	Size [bp]	Conc. [pg/μl]	Molarity [pmol/l]	Observations	Aligned Migration Time [s]
1	35	125.00	5,411.3	Lower Marker	43.00
2	374	603.40	2,447.0		75.70
3	400	682.35	2,587.2		77.74
4	10,380	75.00	10.9	Upper Marker	113.00

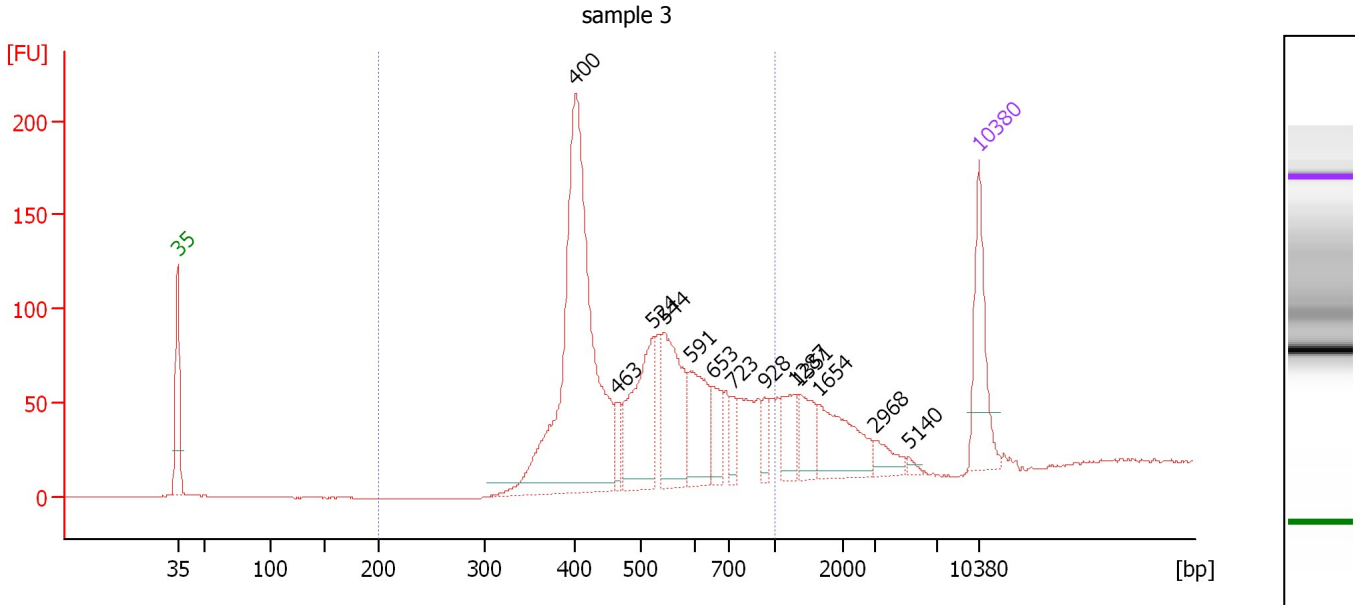
Region table for sample 2 : sample 2

From [bp]	To [bp]	Average Size [bp]	Corr. Area	Molarity [pmol/l]	Co Conc. lor [pg/μl]	% of Total	Size distribution in CV [%]
200	1,000	398	825.3	5,423.5	1,408.17	99	11.4

Assay Class: High Sensitivity DNA Assay
 Data Path: C:\... bioanalyzer\2100 expert\data\2017-07-18\2017-07-18_002.xad

Created: 7/18/2017 10:54:54 AM
 Modified: 7/18/2017 11:24:41 AM

Electropherogram Summary Continued ...



Overall Results for sample 3 : sample 3

Number of peaks found: 13 Corr. Area 1: 1,599.4
 Noise: 0.2

Peak table for sample 3 : sample 3

Peak	Size [bp]	Conc. [pg/μl]	Molarity [pmol/l]	Observations	Aligned Migration Time [s]
1	35	125.00	5,411.3	Lower Marker	43.00
2	400	542.00	2,051.7		77.79
3	463	25.66	83.9		81.33
4	524	137.01	396.2		84.54
5	544	124.33	346.1		85.52
6	591	85.25	218.6		87.76
7	653	39.15	90.8		89.76
8	723	21.40	44.8		91.44
9	928	20.75	33.9		94.23
10	1,287	36.16	42.6		96.89
11	1,351	39.51	44.3		97.26
12	1,654	76.66	70.2		99.03
13	2,968	18.88	9.6		103.92
14	5,140	3.96	1.2		106.90
15	10,380	75.00	10.9	Upper Marker	113.00

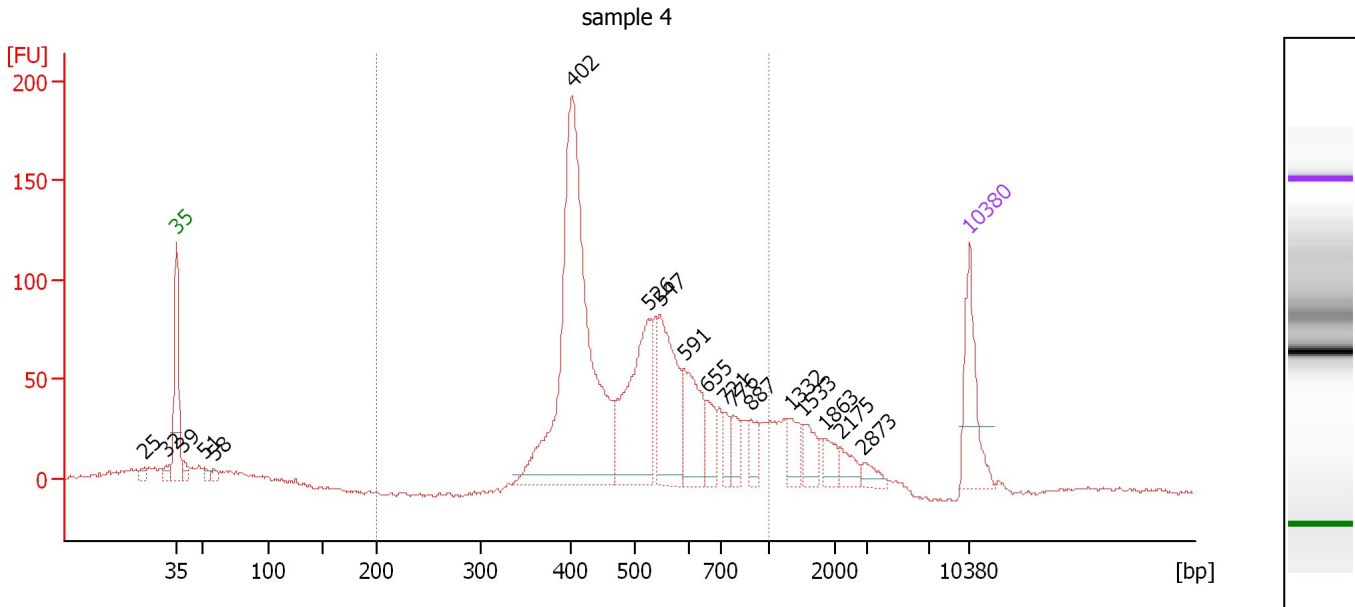
Region table for sample 3 : sample 3

From [bp]	To [bp]	Average Size [bp]	Corr. Area	Molarity [pmol/l]	Co Conc. lor [pg/μl]	% of Total	Size distribution in CV [%]
200	1,000	532	1,599.4	3,215.7	1,032.53	82	28.6

Assay Class: High Sensitivity DNA Assay
 Data Path: C:\... bioanalyzer\2100 expert\data\2017-07-18\2017-07-18_002.xad

Created: 7/18/2017 10:54:54 AM
 Modified: 7/18/2017 11:24:41 AM

Electropherogram Summary Continued ...



Overall Results for sample 4 : sample 4

Number of peaks found: 18 Corr. Area 1: 1,541.2
 Noise: 1.0

Peak table for sample 4 : sample 4

Peak	Size [bp]	Conc. [pg/μl]	Molarity [pmol/l]	Observations	Aligned Migration Time [s]
1	25	0.00	0.0		40.18
2	32	0.00	0.0		42.06
3	35	125.00	5,411.3	Lower Marker	43.00
4	39	16.51	648.7		43.56
5	51	10.13	300.9		45.49
6	58	9.92	257.0		46.34
7	402	607.28	2,287.0		77.91
8	526	205.19	591.3		84.63
9	547	151.63	419.7		85.67
10	591	100.69	258.0		87.78
11	655	36.78	85.1		89.81
12	721	19.88	41.8		91.41
13	776	29.66	57.9		92.16
14	887	27.54	47.0		93.67
15	1,332	30.03	34.2		97.15
16	1,533	27.97	27.6		98.32
17	1,863	20.21	16.4		100.25
18	2,175	18.53	12.9		101.57
19	2,873	12.88	6.8		103.64
20	10,380	75.00	10.9	Upper Marker	113.00

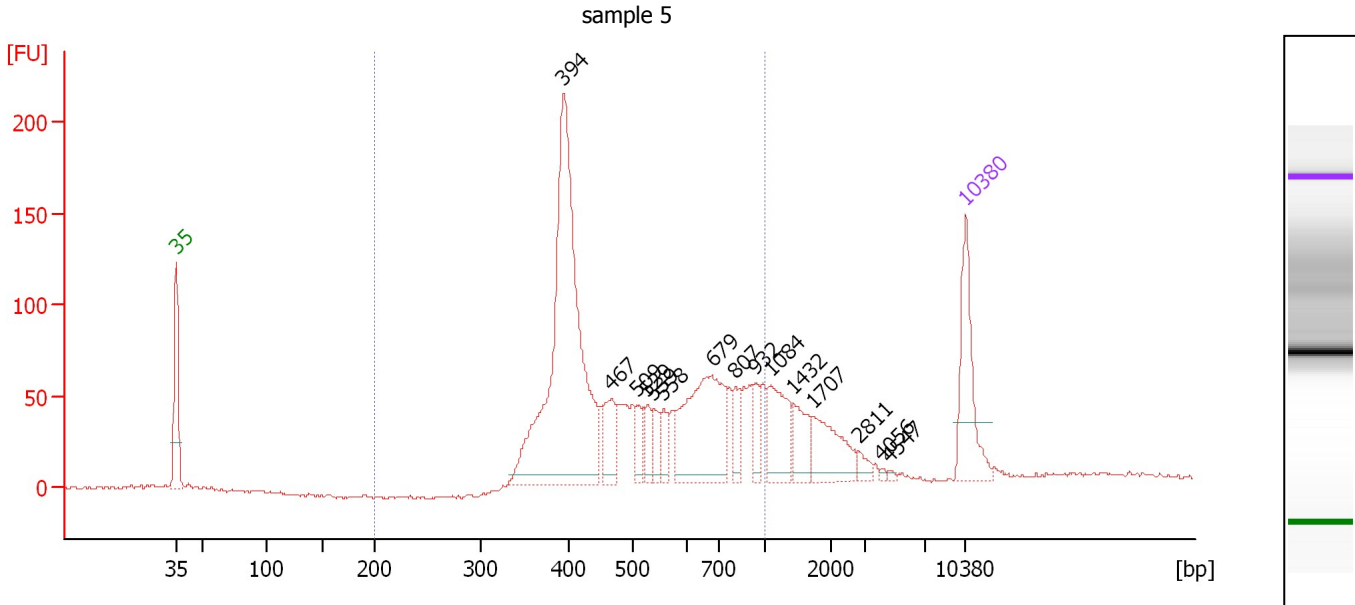
Region table for sample 4 : sample 4

From [bp]	To [bp]	Average Size [bp]	Corr. Area	Molarity [pmol/l]	Co Conc. [pg/μl]	% of Total	Size distribution in CV [%]
200	1,000	527	1,541.2	3,917.1	1,260.09	79	27.1

Assay Class: High Sensitivity DNA Assay
 Data Path: C:\... bioanalyzer\2100 expert\data\2017-07-18\2017-07-18_002.xad

Created: 7/18/2017 10:54:54 AM
 Modified: 7/18/2017 11:24:41 AM

Electropherogram Summary Continued ...



Overall Results for sample 5 : sample 5

Number of peaks found: 15 Corr. Area 1: 1,545.2
 Noise: 1.0

Peak table for sample 5 : sample 5

Peak	Size [bp]	Conc. [pg/μl]	Molarity [pmol/l]	Observations	Aligned Migration Time [s]
1	35	125.00	5,411.3	Lower Marker	43.00
2	394	527.61	2,028.2		77.31
3	467	51.82	168.2		81.52
4	509	21.89	65.1		83.84
5	529	24.13	69.1		84.78
6	539	24.19	68.0		85.26
7	558	21.76	59.0		86.20
8	679	176.61	394.2		90.50
9	807	25.44	47.7		92.58
10	932	24.67	40.1		94.28
11	1,084	64.69	90.4		95.70
12	1,432	35.02	37.0		97.73
13	1,707	59.75	53.0		99.34
14	2,811	9.32	5.0		103.45
15	4,056	2.10	0.8		105.44
16	4,547	2.11	0.7		106.10
17	10,380	75.00	10.9	Upper Marker	113.00

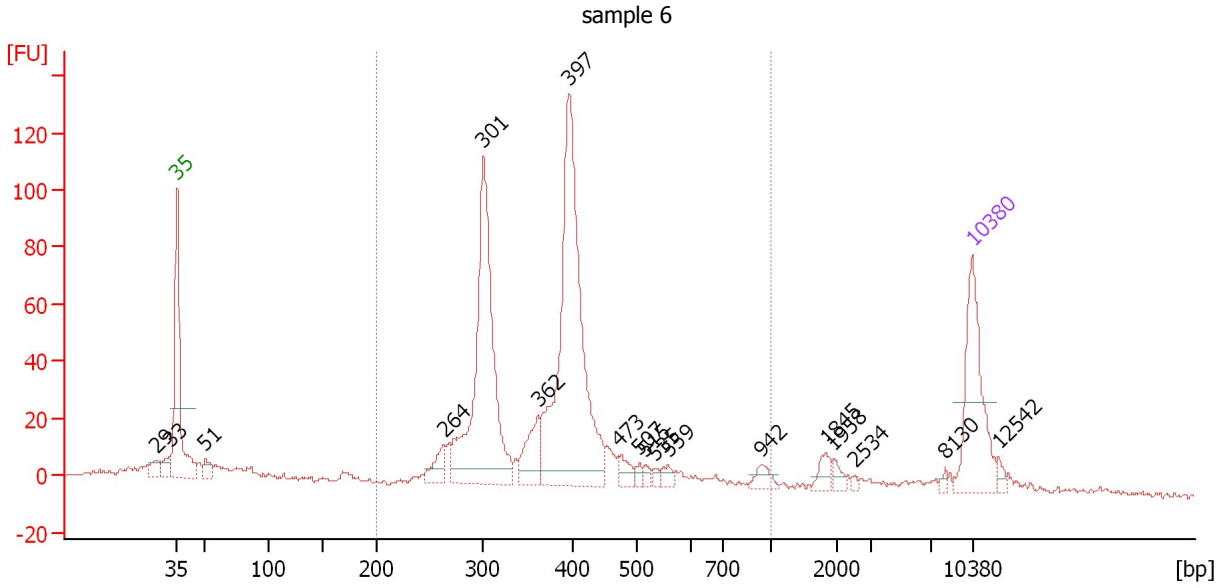
Region table for sample 5 : sample 5

From [bp]	To [bp]	Average Size [bp]	Corr. Area	Molarity [pmol/l]	Co Conc. [pg/μl]	% of Total	Size distribution in CV [%]
200	1,000	537	1,545.2	3,275.9	1,038.48	81	31.9

Assay Class: High Sensitivity DNA Assay
 Data Path: C:\... bioanalyzer\2100 expert\data\2017-07-18\2017-07-18_002.xad

Created: 7/18/2017 10:54:54 AM
 Modified: 7/18/2017 11:24:41 AM

Electropherogram Summary Continued ...



Overall Results for sample 6 : sample 6

Number of peaks found: 18 Corr. Area 1: 878.1
 Noise: 0.8

Peak table for sample 6 : sample 6

Peak	Size [bp]	Conc. [pg/μl]	Molarity [pmol/l]	Observations	Aligned Migration Time [s]
1	29	0.00	0.0		41.17
2	33	0.00	0.0		42.44
3	35	125.00	5,411.3	Lower Marker	43.00
4	51	14.02	417.0		45.49
5	264	24.12	138.5		66.55
6	301	290.90	1,465.2		69.98
7	362	40.35	169.0		74.76
8	397	342.37	1,307.0		77.53
9	473	13.56	43.5		81.85
10	507	5.48	16.4		83.72
11	515	5.07	14.9		84.10
12	535	4.16	11.8		85.08
13	559	8.05	21.8		86.21
14	942	10.81	17.4		94.42
15	1,845	10.18	8.4		100.14
16	1,958	6.08	4.7		100.80
17	2,534	1.83	1.1		102.63
18	8,130	2.84	0.5		110.61
19	10,380	75.00	10.9	Upper Marker	113.00
20	12,542	0.00	0.0		115.30

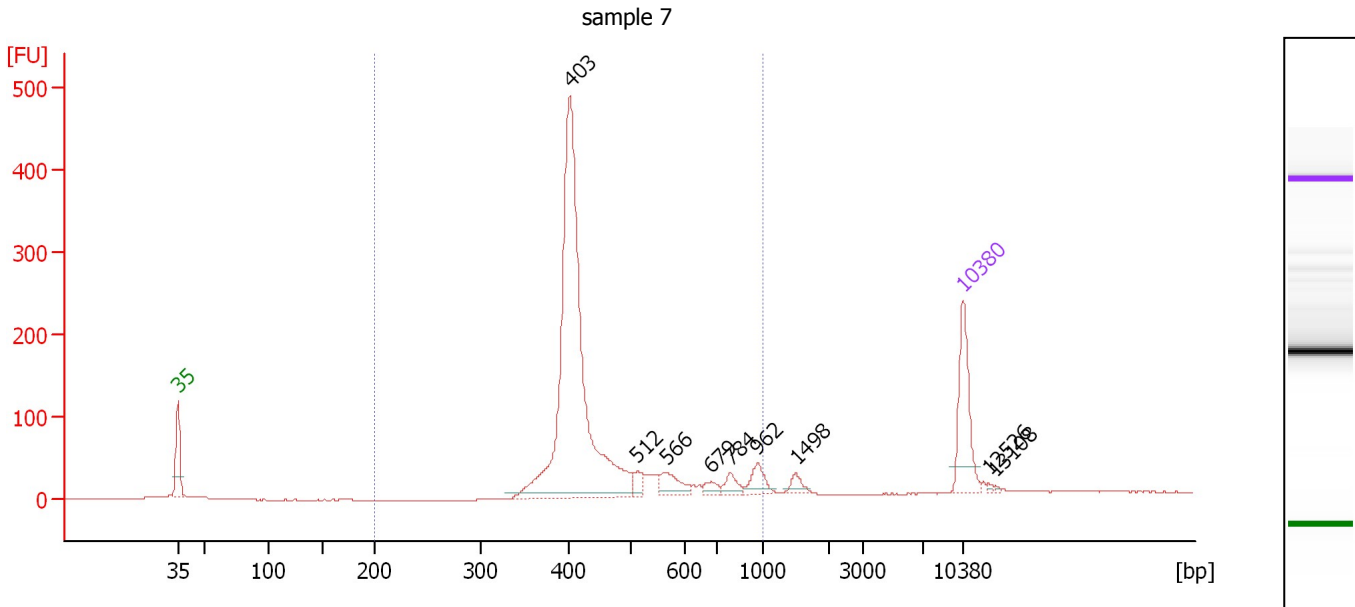
Region table for sample 6 : sample 6

From [bp]	To [bp]	Average Size [bp]	Corr. Area	Molarity [pmol/l]	Co Conc. [pg/μl]	% of Total	Size distribution in CV [%]
200	1,000	386	878.1	3,338.8	791.64	80	28.3

Assay Class: High Sensitivity DNA Assay
 Data Path: C:\... bioanalyzer\2100 expert\data\2017-07-18\2017-07-18_002.xad

Created: 7/18/2017 10:54:54 AM
 Modified: 7/18/2017 11:24:41 AM

Electropherogram Summary Continued ...



Overall Results for sample 7 : sample 7

Number of peaks found: 9 Corr. Area 1: 1,640.4
 Noise: 0.6

Peak table for sample 7 : sample 7

Peak	Size [bp]	Conc. [pg/μl]	Molarity [pmol/l]	Observations	Aligned Migration Time [s]
1	35	125.00	5,411.3	Lower Marker	43.00
2	403	673.98	2,533.0		77.95
3	512	14.98	44.3		83.99
4	566	31.40	84.1		86.56
5	679	11.17	24.9		90.51
6	784	15.14	29.3		92.27
7	962	22.66	35.7		94.69
8	1,498	10.47	10.6		98.12
9	10,380	75.00	10.9	Upper Marker	113.00
10	12,526	0.00	0.0		115.28
11	13,108	0.00	0.0		115.90

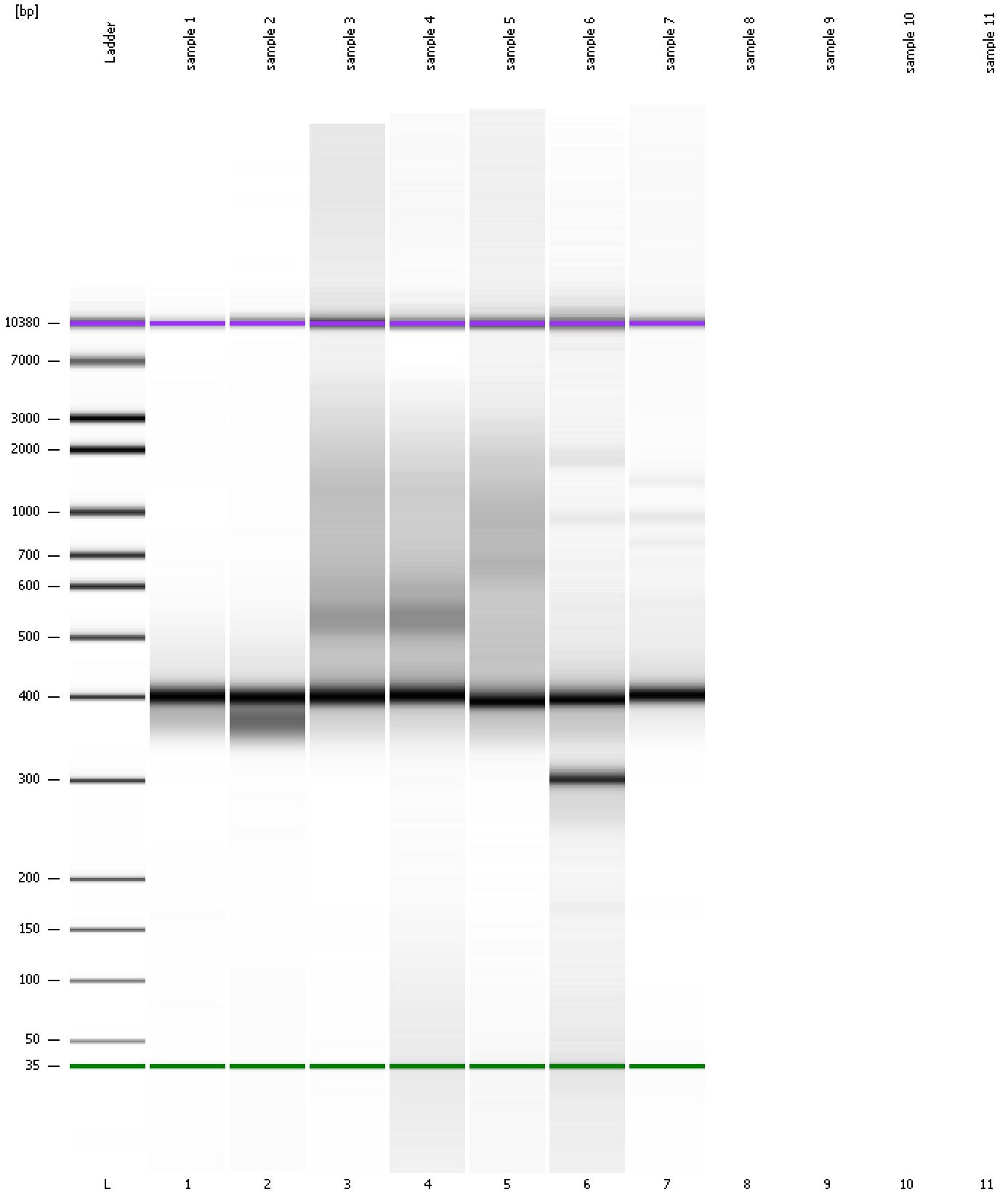
Region table for sample 7 : sample 7

From [bp]	To [bp]	Average Size [bp]	Corr. Area	Molarity [pmol/l]	Co Conc. lor [pg/μl]	% of Total	Size distribution in CV [%]
200	1,000	461	1,640.4	2,709.4	778.40	93	27.2

Assay Class: High Sensitivity DNA Assay
Data Path: C:\... bioanalyzer\2100 expert\data\2017-07-18\2017-07-18_002.xad

Created: 7/18/2017 10:54:54 AM
Modified: 7/18/2017 11:24:41 AM

Gel Image

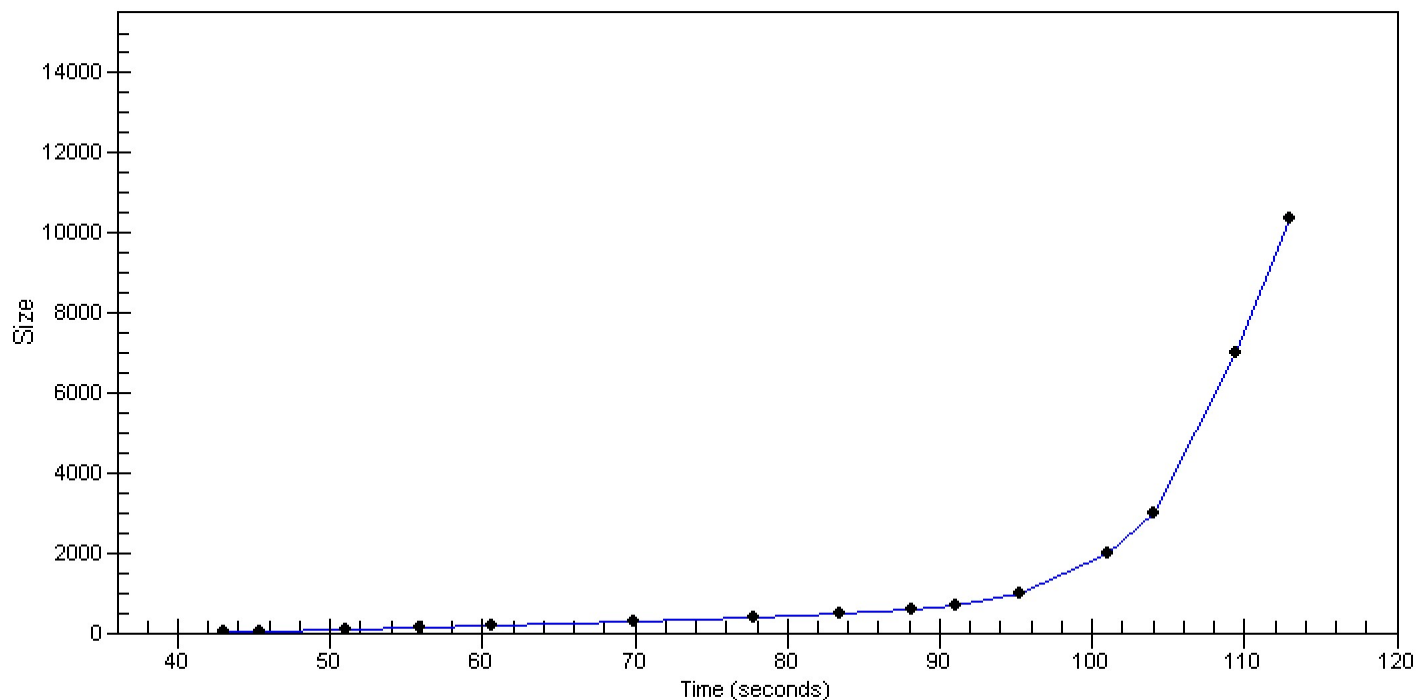


Assay Class: High Sensitivity DNA Assay
Data Path: C:\... bioanalyzer\2100 expert\data\2017-07-18\2017-07-18_002.xad

Created: 7/18/2017 10:54:54 AM
Modified: 7/18/2017 11:24:41 AM

Curves

Standard Curve



Assay Class: High Sensitivity DNA Assay
Data Path: C:\... bioanalyzer\2100 expert\data\2017-07-18\2017-07-18_002.xad

Created: 7/18/2017 10:54:54 AM
Modified: 7/18/2017 11:24:41 AM

Invalid Samples

Sample 8 has not been run, no results available.

Sample 9 has not been run, no results available.

Sample 10 has not been run, no results available.

Sample 11 has not been run, no results available.