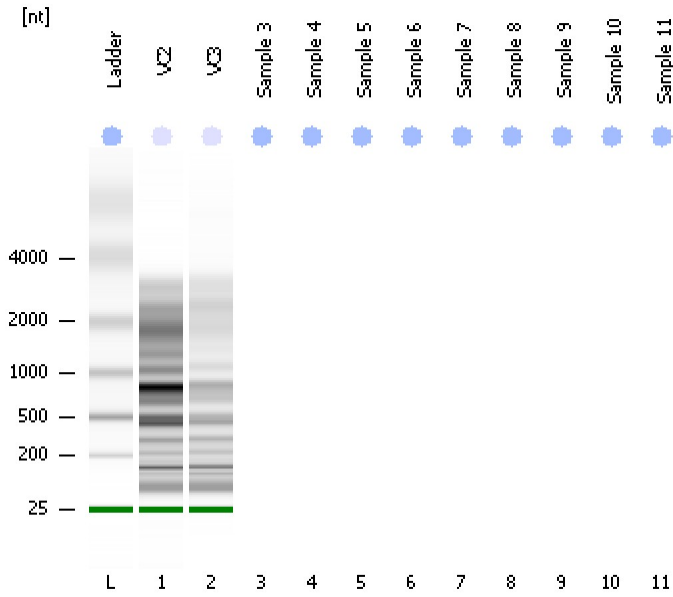


Assay Class: Eukaryote Total RNA Pico
Data Path: C:\... bioanalyzer\2100 expert\data\2017-07-20\2017-07-20_002.xad

Created: 7/20/2017 12:30:13 PM
Modified: 7/20/2017 12:40:15 PM

Electrophoresis File Run Summary



Instrument Information:

Instrument Name: DE13701086 Firmware: C.01.069
Serial#: DE13701086 Type: G2938B

Assay Information:

Assay Origin Path: C:\Program Files\Agilent\2100 bioanalyzer\2100 expert\assays\RNA\Eukaryote Total RNA Pico Series II.xsy

Assay Class: Eukaryote Total RNA Pico

Version: 2.6

Assay Comments: Total RNA Analysis pg sensitivity (Eukaryote)

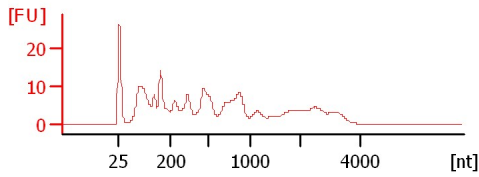
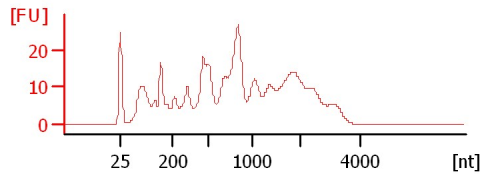
© Copyright 2003 - 2009 Agilent Technologies, Inc.

Chip Information:

Chip Lot #:

Reagent Kit Lot #:

Chip Comments:



Assay Class: Eukaryote Total RNA Pico
Data Path: C:\... bioanalyzer\2100 expert\data\2017-07-20\2017-07-20_002.xad

Created: 7/20/2017 12:30:13 PM
Modified: 7/20/2017 12:40:15 PM

Electrophoresis File Run Summary (Chip Summary)

Sample Name	Sample Comment	Status	Result Label	Result Color
VC2		✓	RIN: 2.90	
VC3		✓	RIN: 2.80	
Sample 3				
Sample 4				
Sample 5				
Sample 6				
Sample 7				
Sample 8				
Sample 9				
Sample 10				
Sample 11				
Ladder		✓	All Other Samples	

Chip Lot #

Reagent Kit Lot #

Chip Comments :

Assay Class: Eukaryote Total RNA Pico
Data Path: C:\... bioanalyzer\2100 expert\data\2017-07-20\2017-07-20_002.xad

Created: 7/20/2017 12:30:13 PM
Modified: 7/20/2017 12:40:15 PM

Electrophoresis Assay Details

General Analysis Settings

Number of Available Sample and Ladder Wells (Max.) : 12

Minimum Visible Range [s] : 17

Maximum Visible Range [s] : 70

Start Analysis Time Range [s] : 18

End Analysis Time Range [s] : 69

Ladder Concentration [pg/ μ l] : 1000

Lower Marker Concentration [pg/ μ l] : 0

Upper Marker Concentration [pg/ μ l] : 0

Used Lower Marker for Quantitation

Standard Curve Fit is Logarithmic

Show Data Aligned to Lower Marker

Integrator Settings

Integration Start Time [s] : 18

Integration End Time [s] : 69

Slope Threshold : 0.6

Height Threshold [FU] : 0.5

Area Threshold : 0.2

Width Threshold [s] : 0.3

Baseline Plateau [s] : 6

Filter Settings

Filter Width [s] : 0.5

Polynomial Order : 4

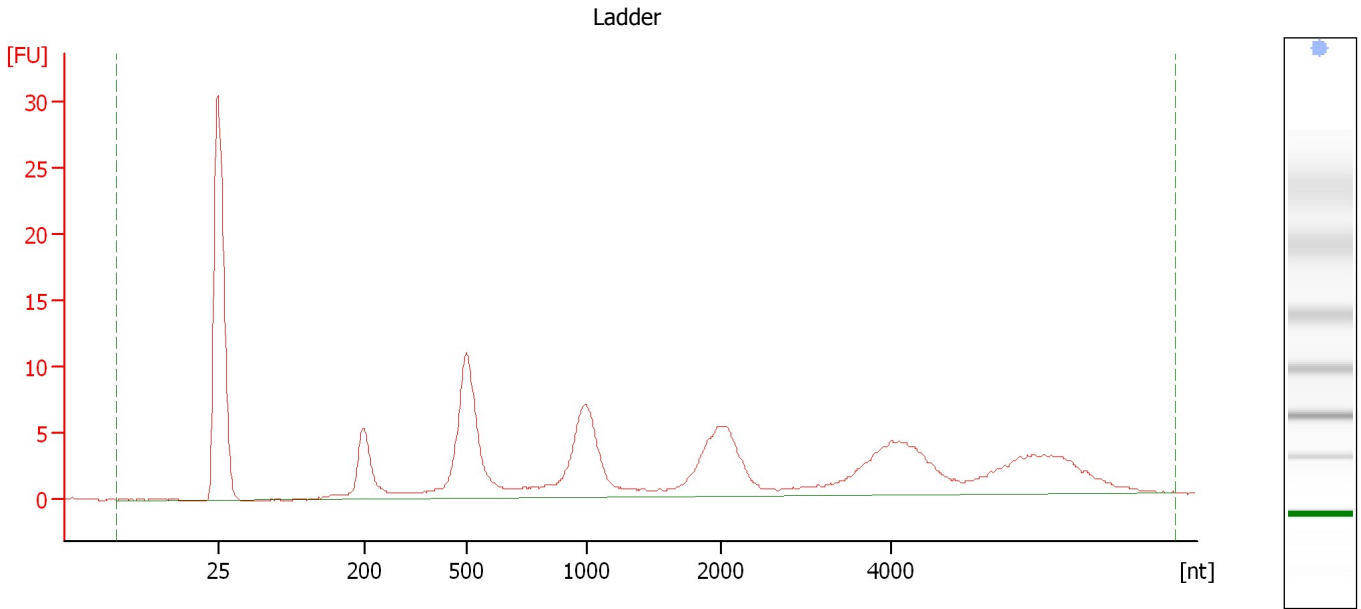
Ladder

Ladder Peak	Size
1	25
2	200
3	500
4	1000
5	2000
6	4000

Assay Class: Eukaryote Total RNA Pico
Data Path: C:\... bioanalyzer\2100 expert\data\2017-07-20\2017-07-20_002.xad

Created: 7/20/2017 12:30:13 PM
Modified: 7/20/2017 12:40:15 PM

Electropherogram Summary



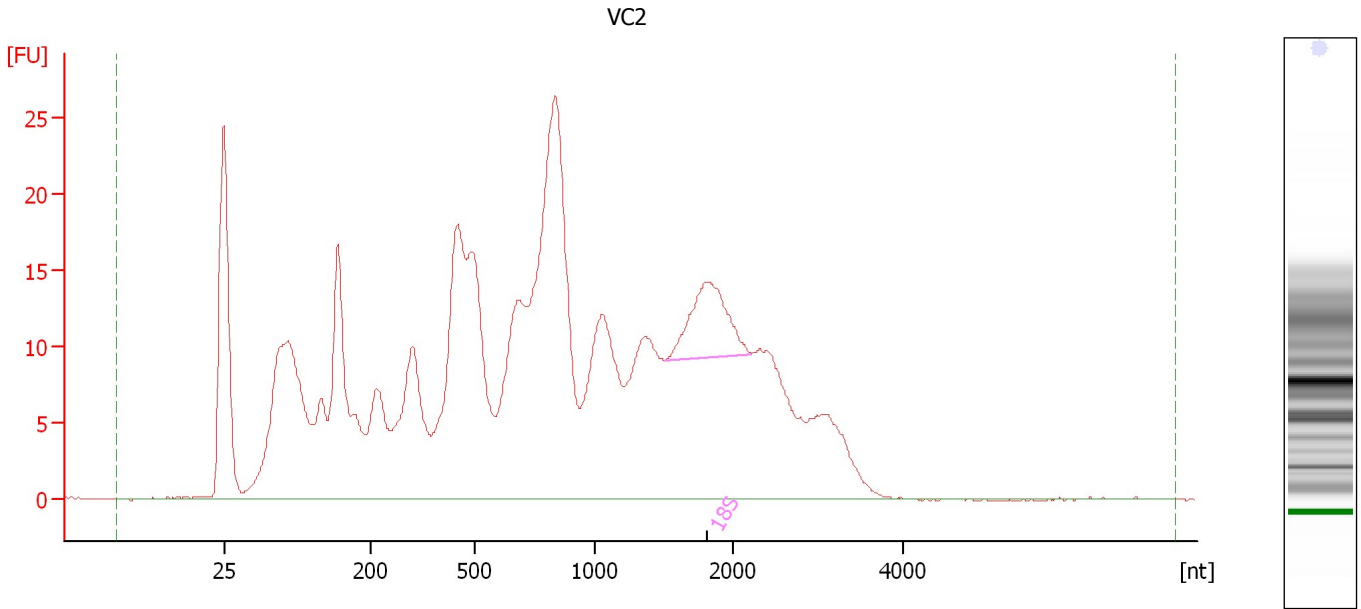
Overall Results for Ladder

RNA Area:	156.8	Result Flagging Color:	
RNA Concentration:	1,000 pg/μl	Result Flagging Label:	All Other Samples

Assay Class: Eukaryote Total RNA Pico
Data Path: C:\... bioanalyzer\2100 expert\data\2017-07-20\2017-07-20_002.xad

Created: 7/20/2017 12:30:13 PM
Modified: 7/20/2017 12:40:15 PM

Electropherogram Summary Continued ...



Overall Results for sample 1 : VC2

RNA Area:	671.5	RNA Integrity Number (RIN):	2.9 (B.02.08)
RNA Concentration:	4,284 pg/μl	Result Flagging Color:	
rRNA Ratio [28s / 18s]:	0.0	Result Flagging Label:	RIN: 2.90

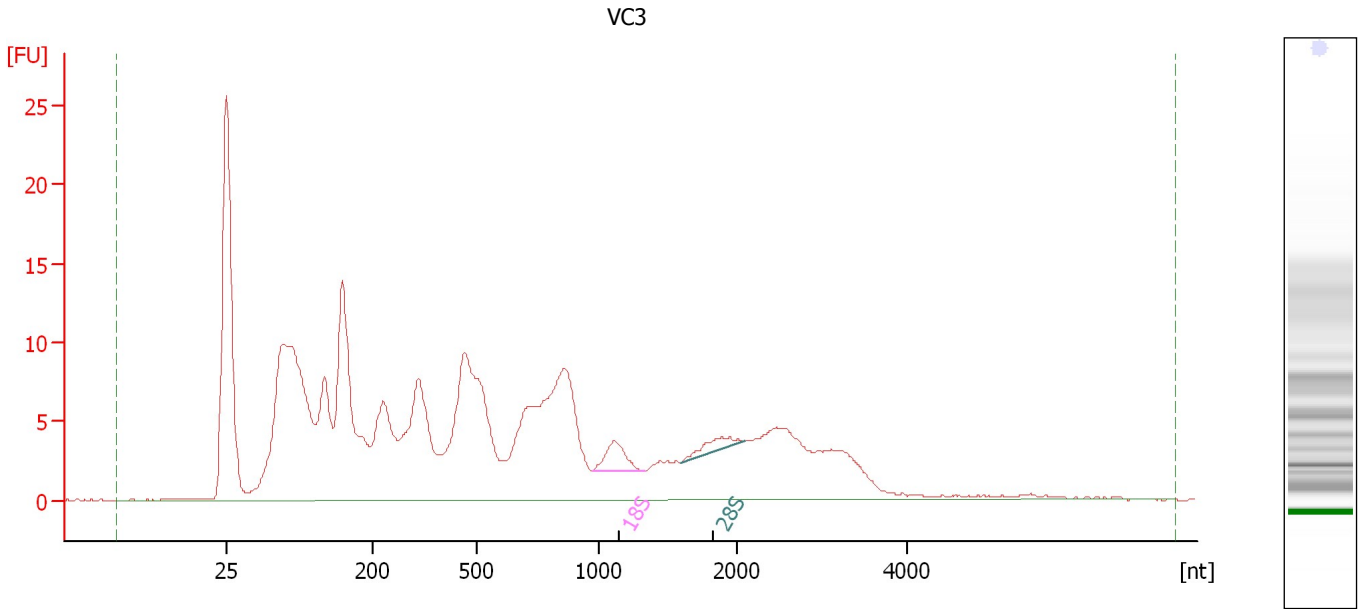
Fragment table for sample 1 : VC2

Name	Start Size [nt]	End Size [nt]	Area	% of total Area
18S	1,510	2,227	20.7	3.1

Assay Class: Eukaryote Total RNA Pico
 Data Path: C:\... bioanalyzer\2100 expert\data\2017-07-20\2017-07-20_002.xad

Created: 7/20/2017 12:30:13 PM
 Modified: 7/20/2017 12:40:15 PM

Electropherogram Summary Continued ...



Overall Results for sample 2 : VC3

RNA Area:	357.6	RNA Integrity Number (RIN):	2.8 (B.02.08)
RNA Concentration:	2,281 pg/μl	Result Flagging Color:	
rRNA Ratio [28s / 18s]:	0.6	Result Flagging Label:	RIN: 2.80

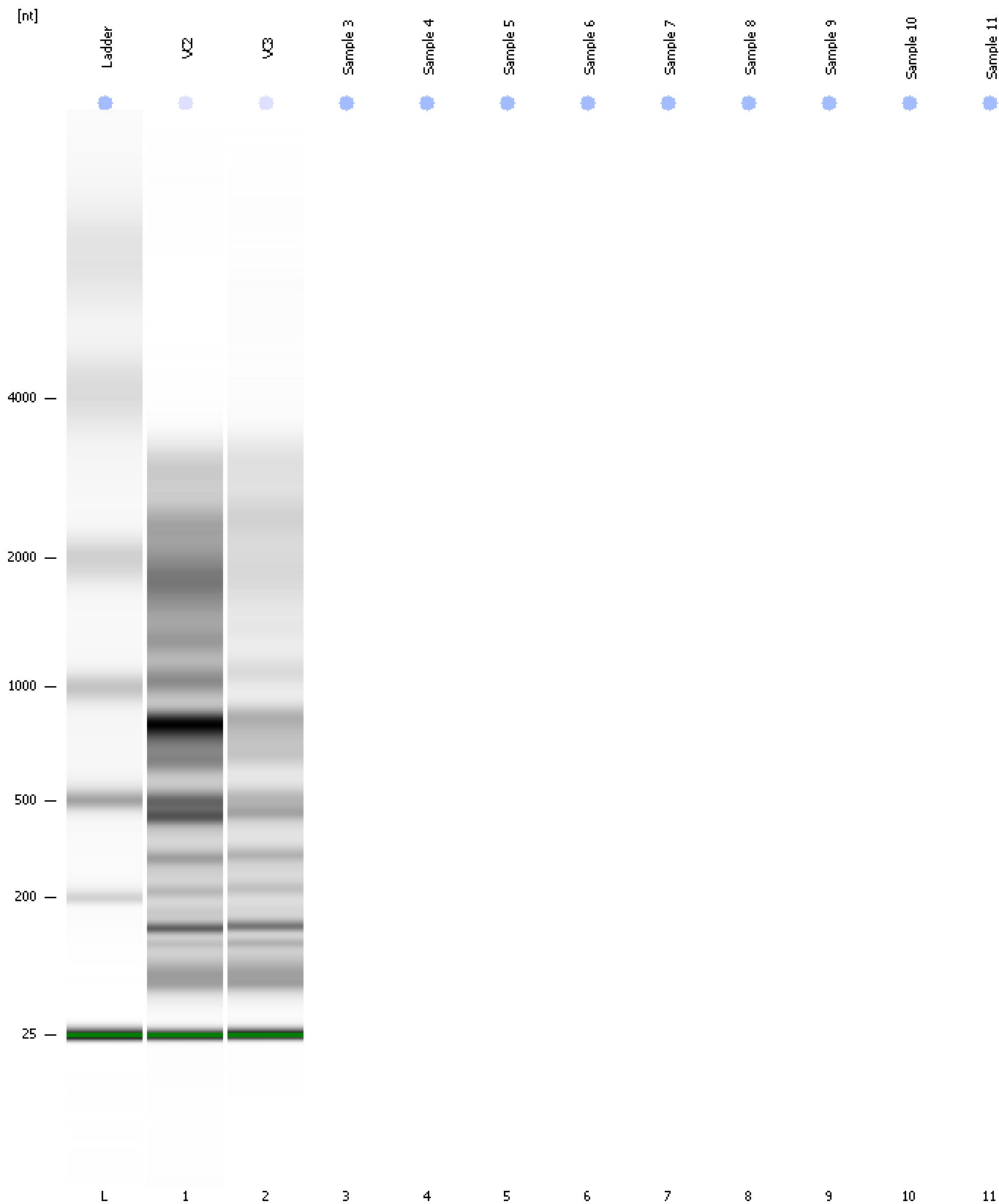
Fragment table for sample 2 : VC3

Name	Start Size [nt]	End Size [nt]	Area	% of total Area
18S	973	1,334	4.7	1.3
28S	1,597	2,089	2.7	0.7

Assay Class: Eukaryote Total RNA Pico
Data Path: C:\... bioanalyzer\2100 expert\data\2017-07-20\2017-07-20_002.xad

Created: 7/20/2017 12:30:13 PM
Modified: 7/20/2017 12:40:15 PM

Gel Image

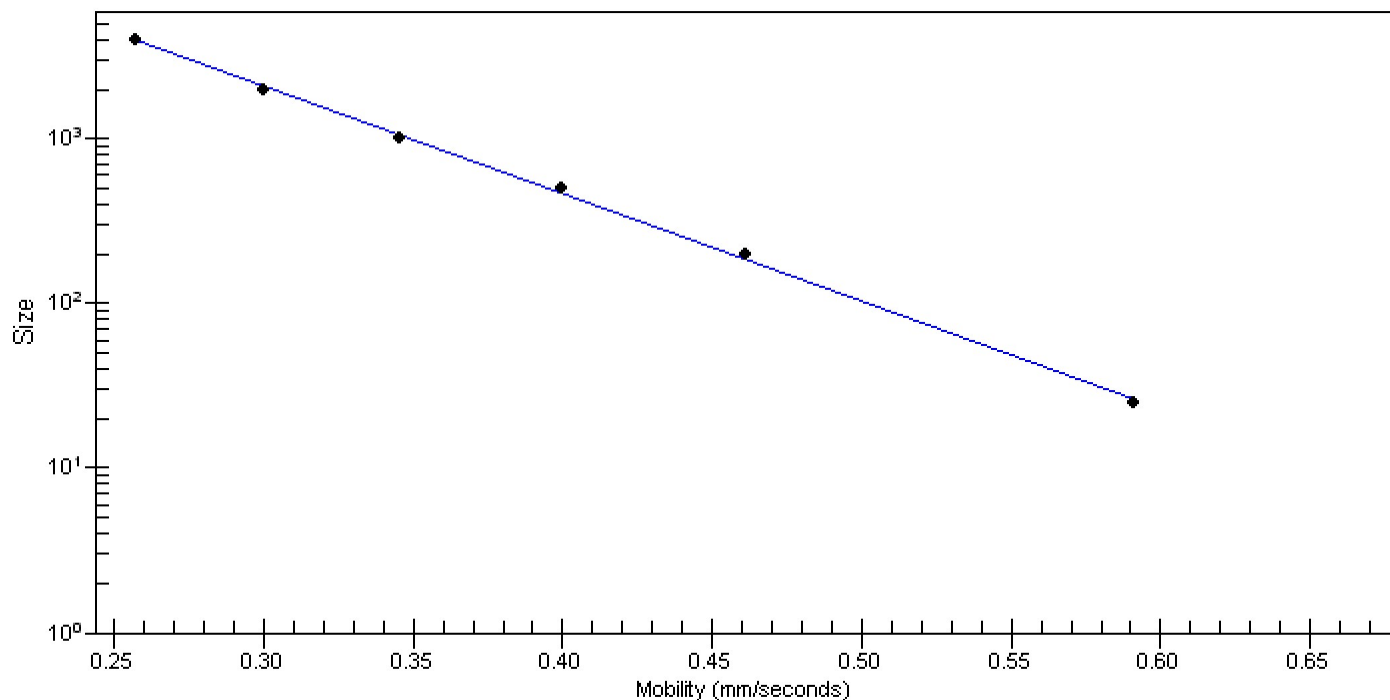


Assay Class: Eukaryote Total RNA Pico
Data Path: C:\... bioanalyzer\2100 expert\data\2017-07-20\2017-07-20_002.xad

Created: 7/20/2017 12:30:13 PM
Modified: 7/20/2017 12:40:15 PM

Curves

Standard Curve



Assay Class: Eukaryote Total RNA Pico
Data Path: C:\... bioanalyzer\2100 expert\data\2017-07-20\2017-07-20_002.xad

Created: 7/20/2017 12:30:13 PM
Modified: 7/20/2017 12:40:15 PM

Invalid Samples

Sample 3 has not been run, no results available.

Sample 4 has not been run, no results available.

Sample 5 has not been run, no results available.

Sample 6 has not been run, no results available.

Sample 7 has not been run, no results available.

Sample 8 has not been run, no results available.

Sample 9 has not been run, no results available.

Sample 10 has not been run, no results available.

Sample 11 has not been run, no results available.