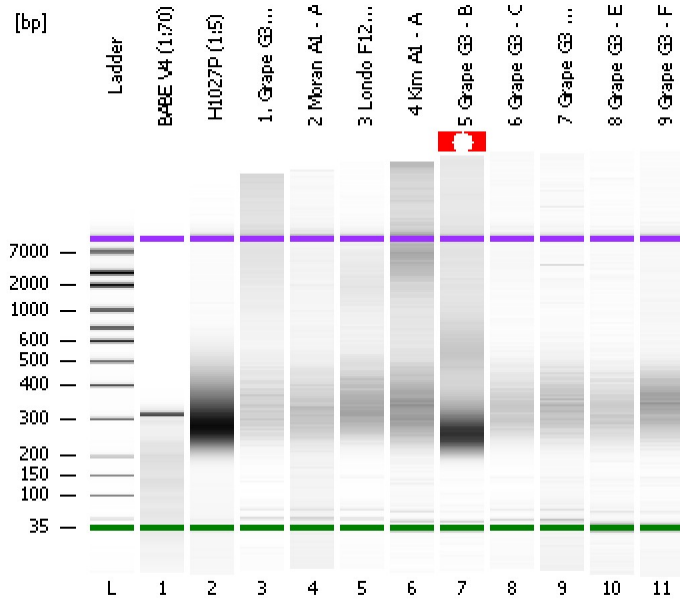


Assay Class: High Sensitivity DNA Assay
Data Path: C:\... bioanalyzer\2100 expert\data\2017-08-07\2017-08-07_001.xad

Created: 8/7/2017 10:48:11 AM
Modified: 8/7/2017 11:29:32 AM

Electrophoresis File Run Summary



Instrument Information:

Instrument Name: DE13701086 Firmware: C.01.069
Serial#: DE13701086 Type: G2938B

Assay Information:

Assay Origin Path: C:\Program Files\Agilent\2100 bioanalyzer\2100 expert\assays\dsDNA\High Sensitivity DNA.xsy
Assay Class: High Sensitivity DNA Assay
Version: 1.03
Assay Comments: Copyright © 2003-2010 Agilent Technologies

Chip Information:

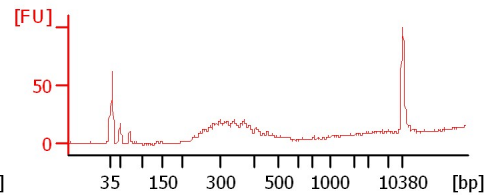
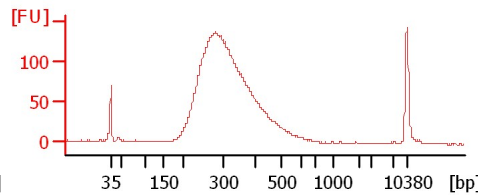
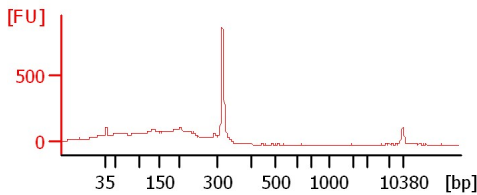
Chip Lot #:
Reagent Kit Lot #:
Chip Comments:

BABE V4 (1:70)

H1027P (1:5)

1. Grape G3 - A

GBS Test Lig Buffers

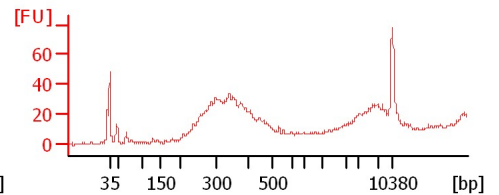
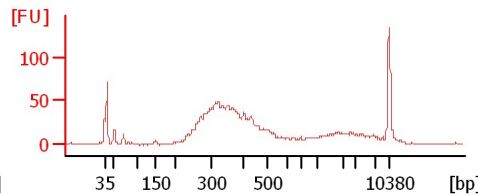
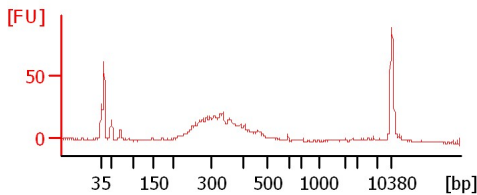


2 Moran A1 - A

3 Londo F12 - A

4 Kim A1 - A

GBS Test Lig Buffers

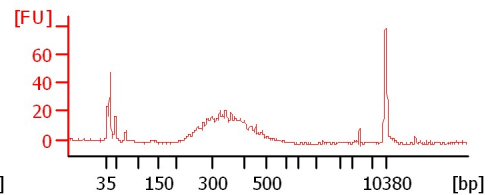
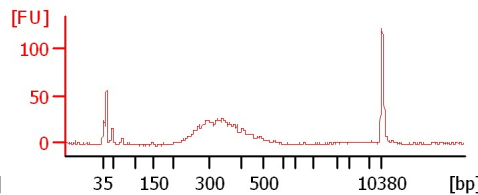
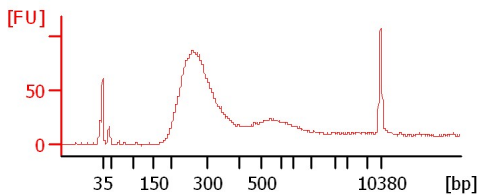


5 Grape G3 - B

6 Grape G3 - C

7 Grape G3 - D

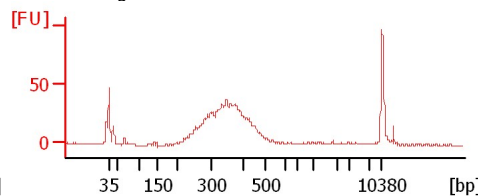
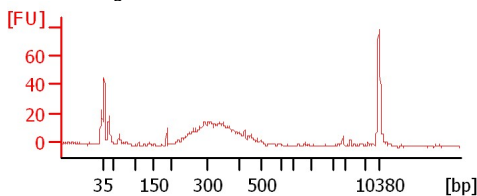
GBS Test Lig Buffers



8 Grape G3 - E

9 Grape G3 - F

GBS Test Lig Buffers



Assay Class: High Sensitivity DNA Assay
Data Path: C:\... bioanalyzer\2100 expert\data\2017-08-07\2017-08-07_001.xad

Created: 8/7/2017 10:48:11 AM
Modified: 8/7/2017 11:29:32 AM

Electrophoresis File Run Summary (Chip Summary)

Sample Name	Sample Comment	Rest. Digest	Status	Observation	Result Label	Result Color
BABE V4 (1:70)		<input type="checkbox"/>	✓			
H1027P (1:5)		<input type="checkbox"/>	✓			
1. Grape G3 - A	GBS Test Lig Buffers	<input type="checkbox"/>	✓			
2 Moran A1 - A	GBS Test Lig Buffers	<input type="checkbox"/>	✓			
3 Londo F12 - A	GBS Test Lig Buffers	<input type="checkbox"/>	✓			
4 Kim A1 - A	GBS Test Lig Buffers	<input type="checkbox"/>	✓			
5 Grape G3 - B	GBS Test Lig Buffers	<input type="checkbox"/>	⚠			
6 Grape G3 - C	GBS Test Lig Buffers	<input type="checkbox"/>	✓			
7 Grape G3 - D	GBS Test Lig Buffers	<input type="checkbox"/>	✓			
8 Grape G3 - E	GBS Test Lig Buffers	<input type="checkbox"/>	✓			
9 Grape G3 - F	GBS Test Lig Buffers	<input type="checkbox"/>	✓			
Ladder		<input type="checkbox"/>	✓			

Chip Lot #

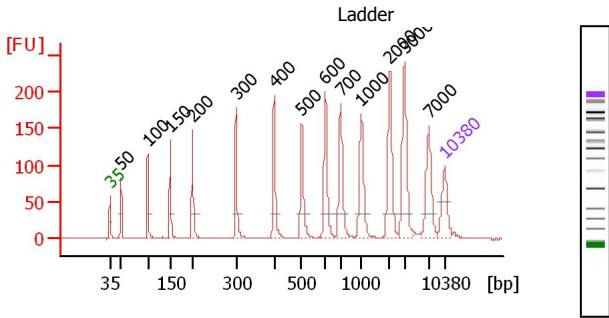
Reagent Kit Lot #

Chip Comments :

Assay Class: High Sensitivity DNA Assay
 Data Path: C:\... bioanalyzer\2100 expert\data\2017-08-07\2017-08-07_001.xad

Created: 8/7/2017 10:48:11 AM
 Modified: 8/7/2017 11:29:32 AM

Electropherogram Summary



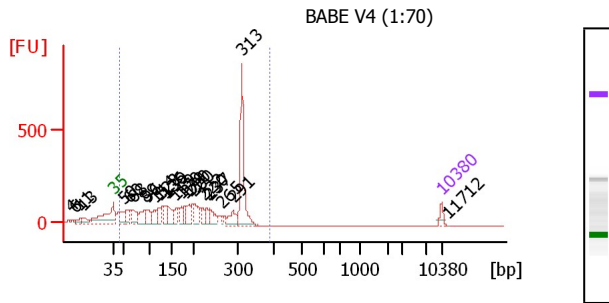
Peak table for Ladder

Peak	Size [bp]	Conc. [pg/μl]	Molarity [pmol/l]	Observations	Aligned Migration Time
1	35	125.00	5,411.3	Lower Marker	43.00
2	50	150.00	4,545.5	Ladder Peak	45.32
3	100	150.00	2,272.7	Ladder Peak	50.91
4	150	150.00	1,515.2	Ladder Peak	55.63
5	200	150.00	1,136.4	Ladder Peak	60.30
6	300	150.00	757.6	Ladder Peak	69.39
7	400	150.00	568.2	Ladder Peak	77.34
8	500	150.00	454.5	Ladder Peak	83.16
9	600	150.00	378.8	Ladder Peak	88.09
10	700	150.00	324.7	Ladder Peak	91.28
11	1,000	150.00	227.3	Ladder Peak	95.61
12	2,000	150.00	113.6	Ladder Peak	101.60
13	3,000	150.00	75.8	Ladder Peak	104.65

Overall Results for Ladder

Noise: 0.2

Peak	Size [bp]	Conc. [pg/μl]	Molarity [pmol/l]	Observations	Aligned Migration Time
14	7,000	150.00	32.5	Ladder Peak	109.72
15	10,380	75.00	10.9	Upper Marker	113.00



Overall Results for sample 1

Number of peaks found: 25
 Noise: 0.4
 Corr. Area 1: 4,237.0

Region table for sample 1

From [bp]	To [bp]	Average Size [bp]	Corrected Area	Molarity [pmol/l]	Conc. [pg/μl]	% of Total	Size distribution CV [%]
43	387	207	4,237.0	61,709.0	5,485.7	95.7	44.0

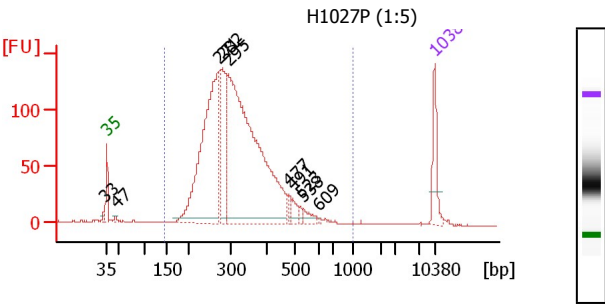
Assay Class: High Sensitivity DNA Assay
 Data Path: C:\... bioanalyzer\2100 expert\data\2017-08-07\2017-08-07_001.xad

Created: 8/7/2017 10:48:11 AM
 Modified: 8/7/2017 11:29:32 AM

Electropherogram Summary Continued ...

Peak table for sample 1

Peak	Size [bp]	Conc. [pg/μl]	Molarity [pmol/l]	Observations	Aligned Migration Time	Peak	Size [bp]	Conc. [pg/μl]	Molarity [pmol/l]	Observations	Aligned Migration Time
1	4	0.00	0.0		34.09	26	10,380	75.00	10.9	Upper Marker	113.00
2	6	0.00	0.0		34.85						
3	11	0.00	0.0		36.01	27	11,712	0.00	0.0		114.29
4	13	0.00	0.0		36.63						
5	35	125.00	5,411.3	Lower Marker	43.00						
6	50	257.83	7,858.5		45.27						
7	60	260.23	6,621.0		46.38						
8	68	277.38	6,188.6		47.32						
9	89	327.15	5,544.1		49.72						
10	96	335.36	5,283.4		50.48						
11	114	220.57	2,934.9		52.22						
12	123	186.06	2,295.1		53.06						
13	136	218.27	2,439.5		54.27						
14	139	375.38	4,095.6		54.58						
15	159	163.18	1,552.6		56.49						
16	170	190.80	1,703.3		57.47						
17	179	132.39	1,119.1		58.36						
18	190	241.72	1,925.6		59.39						
19	200	340.53	2,583.3		60.28						
20	222	146.82	1,003.1		62.28						
21	230	103.14	679.2		63.04						
22	237	262.53	1,678.7		63.66						
23	265	53.03	303.3		66.20						
24	291	220.01	1,146.2		68.56						
25	313	1,228.31	5,944.9		70.43						



Peak table for sample 2

Peak	Size [bp]	Conc. [pg/μl]	Molarity [pmol/l]	Observations	Aligned Migration Time
1	33	0.00	0.0		42.42
2	35	125.00	5,411.3	Lower Marker	43.00
3	47	9.67	312.9		44.83
4	271	787.54	4,406.9		66.73
5	282	240.82	1,295.9		67.72
6	295	1,316.88	6,767.8		68.92
7	477	18.55	58.9		81.81
8	491	29.65	91.6		82.62
9	523	7.83	22.7		84.27
10	538	24.11	67.9		85.03
11	609	2.91	7.2		88.37
12	10,380	75.00	10.9	Upper Marker	113.00

Overall Results for sample 2

Number of peaks found: 10
 Noise: 0.3
 Corr. Area 1: 2,796.3

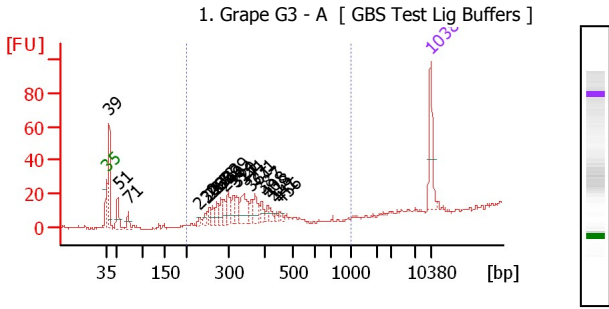
Region table for sample 2

From [bp]	To [bp]	Average Size [bp]	Corr. Area	Molarity [pmol/l]	Conc. [pg/μl]	% of Total in CV [%]	Size distribution
148	1,000	324	2,796.3	12,561.9	2,486.2	97	26.2

Assay Class: High Sensitivity DNA Assay
 Data Path: C:\... bioanalyzer\2100 expert\data\2017-08-07\2017-08-07_001.xad

Created: 8/7/2017 10:48:11 AM
 Modified: 8/7/2017 11:29:32 AM

Electropherogram Summary Continued ...



Peak table for sample 3 : 1. Grape G3 - A

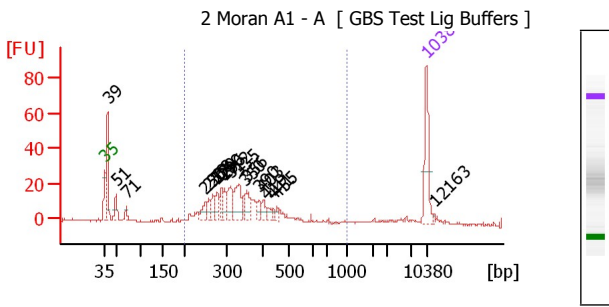
Peak	Size [bp]	Conc. [pg/μl]	Molarity [pmol/l]	Observations	Aligned Migration Time
1	35	125.00	5,411.3	Lower Marker	43.00
2	39	162.81	6,406.5		43.54
3	51	59.19	1,769.9		45.39
4	71	29.65	634.3		47.65
5	230	11.15	73.4		63.03
6	248	21.06	128.5		64.69
7	255	23.91	142.2		65.28
8	262	18.39	106.2		65.96
9	273	30.69	170.6		66.90
10	282	27.80	149.6		67.72
11	290	23.31	121.8		68.48
12	299	45.88	232.5		69.30
13	314	31.00	149.8		70.47
14	320	35.52	168.3		70.96
15	341	74.41	330.9		72.63
16	361	19.88	83.5		74.21
17	371	41.20	168.1		75.07
18	387	22.94	89.7		76.33
19	408	13.91	51.6		77.82
20	418	12.14	44.0		78.41
21	441	7.30	25.1		79.71
22	456	6.01	20.0		80.62
23	10,380	75.00	10.9	Upper Marker	113.00

Overall Results for sample 3 : 1. Grape G3 - A

Number of peaks found: 21
 Noise: 0.4
 Corr. Area 1: 191.7

Region table for sample 3 : 1. Grape G3 - A

From [bp]	To [bp]	Average Size [bp]	Corr. Area	Molarity [pmol/l]	Conc. [pg/μl]	% of Total in CV [%]	Size distribution
200	1,000	327	191.7	1,486.0	312.54	67	14.3



Peak table for sample 4 : 2 Moran A1 - A

Peak	Size [bp]	Conc. [pg/μl]	Molarity [pmol/l]	Observations	Aligned Migration Time
1	35	125.00	5,411.3	Lower Marker	43.00
2	39	135.94	5,304.5		43.59
3	51	38.21	1,138.7		45.41
4	71	14.26	305.3		47.64
5	250	27.68	167.5		64.88
6	259	22.89	134.0		65.65
7	268	22.92	129.4		66.52
8	279	38.83	211.0		67.47
9	290	28.71	150.1		68.47
10	296	27.09	138.7		69.02
11	312	51.62	250.8		70.34
12	335	70.91	320.4		72.20
13	350	19.04	82.4		73.38
14	356	34.29	145.7		73.88
15	390	16.56	64.3		76.57
16	403	21.25	79.9		77.52
17	419	13.35	48.2		78.48
18	441	7.47	25.7		79.71
19	455	9.31	31.0		80.57
20	10,380	75.00	10.9	Upper Marker	113.00
21	12,163	0.00	0.0		114.73

Overall Results for sample 4 : 2 Moran A1 - A

Number of peaks found: 19
 Noise: 0.5
 Corr. Area 1: 353.2

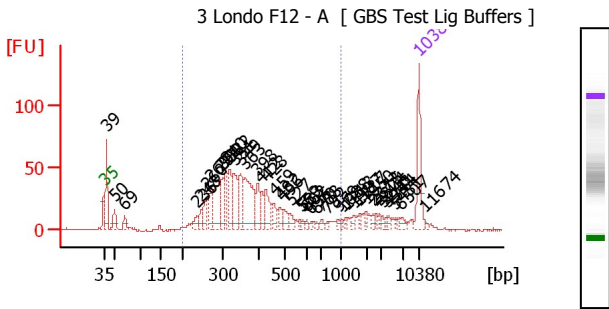
Region table for sample 4 : 2 Moran A1 - A

From [bp]	To [bp]	Average Size [bp]	Corr. Area	Molarity [pmol/l]	Conc. [pg/μl]	% of Total in CV [%]	Size distribution
200	1,000	338	353.2	2,347.8	495.19	75	20.9

Assay Class: High Sensitivity DNA Assay
 Data Path: C:\... bioanalyzer\2100 expert\data\2017-08-07\2017-08-07_001.xad

Created: 8/7/2017 10:48:11 AM
 Modified: 8/7/2017 11:29:32 AM

Electropherogram Summary Continued ...



Peak table for sample 5 : 3 Londo F12 - A

Peak	Size [bp]	Conc. [pg/μl]	Molarity [pmol/l]	Observations	Aligned Migration Time
1	35	125.00	5,411.3	Lower Marker	43.00
2	39	123.46	4,844.9		43.56
3	50	36.29	1,098.3		45.32
4	69	20.79	455.5		47.46
5	236	23.54	151.1		63.58
6	248	24.51	149.9		64.65
7	260	44.70	260.4		65.76
8	269	49.65	279.4		66.60
9	294	127.00	655.0		68.83
10	300	45.56	229.7		69.43
11	310	52.69	257.7		70.17
12	322	44.82	211.2		71.10
13	331	85.96	393.6		71.85
14	349	71.75	311.6		73.29
15	363	148.83	621.3		74.40
16	398	51.09	194.5		77.19
17	412	28.68	105.4		78.07
18	428	55.35	195.7		79.00
19	459	19.13	63.2		80.76
20	482	15.58	49.0		82.11
21	496	28.33	86.5		82.95
22	527	16.73	48.1		84.48
23	569	5.84	15.5		86.57
24	583	5.31	13.8		87.27
25	602	5.67	14.3		88.15
26	635	5.66	13.5		89.22

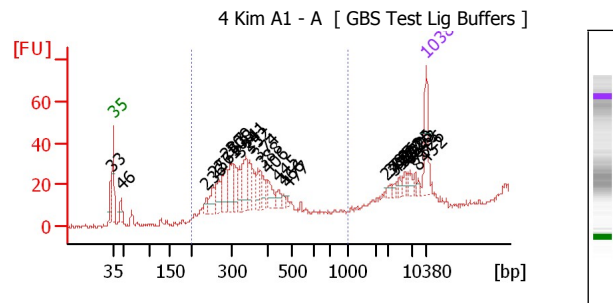
Overall Results for sample 5 : 3 Londo F12 - A

Number of peaks found: 43
 Noise: 0.6
 Corr. Area 1: 992.3

Region table for sample 5 : 3 Londo F12 - A

From To [bp]	Average Size [bp]	Corr. Area	Molarity [pmol/l]	Conc. [pg/μl]	% of Size distribution Total in CV [%]
200	1,000	386	992.3	4,642.8	1,057.5 77 33.7

Peak	Size [bp]	Conc. [pg/μl]	Molarity [pmol/l]	Observations	Aligned Migration Time
27	670	3.65	8.3		90.33
28	708	8.82	18.9		91.40
29	792	4.59	8.8		92.61
30	979	5.22	8.1		95.30
31	1,088	4.78	6.6		96.14
32	1,213	5.75	7.2		96.88
33	1,507	6.78	6.8		98.65
34	1,717	7.10	6.3		99.90
35	1,950	5.87	4.6		101.29
36	2,372	5.60	3.6		102.73
37	2,615	6.39	3.7		103.48
38	2,874	6.01	3.2		104.27
39	3,245	4.75	2.2		104.96
40	3,941	5.85	2.2		105.85
41	4,344	4.55	1.6		106.36
42	5,481	5.27	1.5		107.80
43	6,507	9.91	2.3		109.10
44	10,380	75.00	10.9	Upper Marker	113.00
45	11,674	0.00	0.0		114.25



Overall Results for sample 6 : 4 Kim A1 - A

Number of peaks found: 27
 Noise: 0.8
 Corr. Area 1: 432.4

Region table for sample 6 : 4 Kim A1 - A

From To [bp]	Average Size [bp]	Corr. Area	Molarity [pmol/l]	Conc. [pg/μl]	% of Size distribution Total in CV [%]
200	1,000	336	432.4	4,112.5	873.60 79 17.6

Assay Class: High Sensitivity DNA Assay
 Data Path: C:\... bioanalyzer\2100 expert\data\2017-08-07\2017-08-07_001.xad

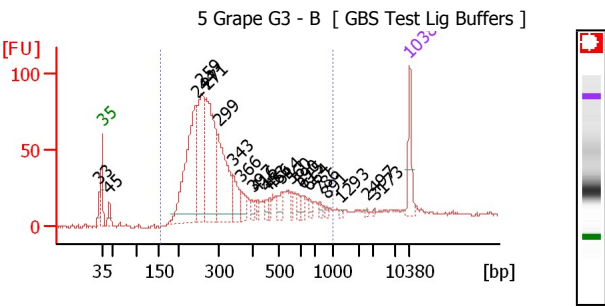
Created: 8/7/2017 10:48:11 AM
 Modified: 8/7/2017 11:29:32 AM

Electropherogram Summary Continued ...

Peak table for sample 6 : 4 Kim A1 - A

Peak	Size [bp]	Conc. [pg/μl]	Molarity [pmol/l]	Observations	Aligned Migration Time
1	33	0.00	0.0		42.44
2	35	125.00	5,411.3	Lower Marker	43.00
3	46	42.85	1,405.3		44.73
4	236	23.77	152.4		63.61
5	256	53.81	318.6		65.38
6	271	61.73	345.4		66.74
7	287	89.65	473.7		68.19
8	300	79.04	399.7		69.36
9	308	68.60	337.1		70.06
10	324	36.85	172.5		71.27
11	341	107.88	479.0		72.67
12	352	41.16	177.3		73.51
13	374	33.94	137.4		75.29
14	388	33.25	130.0		76.36
15	406	41.76	156.0		77.67
16	445	27.11	92.3		79.96
17	466	9.18	29.9		81.18
18	477	8.06	25.6		81.83
19	2,795	3.11	1.7		104.03
20	3,096	9.53	4.7		104.78
21	3,907	5.07	2.0		105.80
22	4,387	5.61	1.9		106.41
23	4,829	8.57	2.7		106.97
24	5,825	11.85	3.1		108.23
25	6,120	8.86	2.2		108.61
26	6,673	14.64	3.3		109.31

Peak	Size [bp]	Conc. [pg/μl]	Molarity [pmol/l]	Observations	Aligned Migration Time
27	7,826	7.52	1.5		110.52
28	8,452	6.53	1.2		111.13
29	10,380	75.00	10.9	Upper Marker	113.00



Peak table for sample 7 : 5 Grape G3 - B

Peak	Size [bp]	Conc. [pg/μl]	Molarity [pmol/l]	Observations	Aligned Migration Time
1	33	0.00	0.0		42.38
2	35	125.00	5,411.3	Lower Marker	43.00
3	45	46.39	1,545.9		44.62
4	244	602.13	3,733.1		64.34
5	259	344.96	2,021.9		65.62
6	271	477.61	2,669.8		66.76
7	299	334.66	1,694.2		69.33
8	343	94.46	416.8		72.84
9	366	53.54	221.9		74.60
10	397	17.64	67.3		77.12
11	416	14.06	51.2		78.26
12	453	19.34	64.6		80.45
13	466	19.53	63.4		81.21
14	514	37.21	109.6		83.87
15	560	16.70	45.2		86.10
16	590	20.94	53.8		87.58
17	615	13.36	32.9		88.57
18	664	20.28	46.3		90.14
19	786	13.29	25.6		92.52
20	891	8.53	14.5		94.04
21	1,293	3.56	4.2		97.37
22	2,497	3.19	1.9		103.12
23	3,173	2.51	1.2		104.87
24	10,380	75.00	10.9	Upper Marker	113.00

Overall Results for sample 7 : 5 Grape G3 - B

Number of peaks found: 22
 Noise: 0.7
 Corr. Area 1: 1,542.0

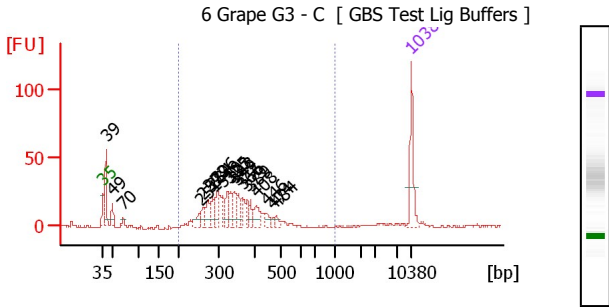
Region table for sample 7 : 5 Grape G3 - B

From [bp]	To [bp]	Average Size [bp]	Corrected Area	Molarity [pmol/l]	Conc. [pg/μl]	% of Total in CV [%]	Size distribution
158	1,000	350	1,542.0	12,181.7	2,375.4	91	42.5

Assay Class: High Sensitivity DNA Assay
 Data Path: C:\... bioanalyzer\2100 expert\data\2017-08-07\2017-08-07_001.xad

Created: 8/7/2017 10:48:11 AM
 Modified: 8/7/2017 11:29:32 AM

Electropherogram Summary Continued ...



Peak table for sample 8 : 6 Grape G3 - C

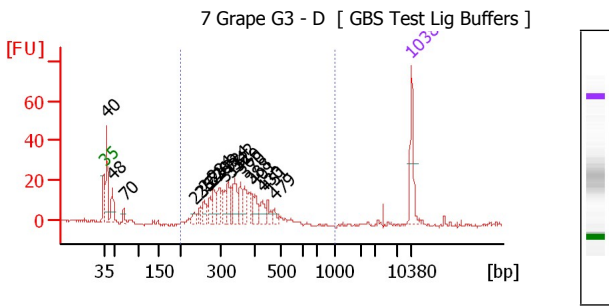
Peak	Size [bp]	Conc. [pg/μl]	Molarity [pmol/l]	Observations	Aligned Migration Time
1	35	125.00	5,411.3	Lower Marker	43.00
2	39	112.72	4,379.6		43.62
3	49	42.66	1,332.1		45.09
4	70	11.18	240.4		47.60
5	251	30.52	184.0		64.97
6	259	22.11	129.5		65.64
7	272	52.90	295.0		66.82
8	284	27.09	144.4		67.96
9	296	61.82	316.7		69.01
10	310	25.94	126.7		70.19
11	325	48.60	226.6		71.38
12	333	33.40	152.1		72.00
13	343	32.89	145.1		72.85
14	349	41.10	178.2		73.33
15	366	22.35	92.6		74.61
16	379	23.70	94.7		75.70
17	389	18.84	73.4		76.46
18	408	38.80	144.2		77.79
19	446	19.46	66.1		80.02
20	474	6.80	21.7		81.63
21	484	11.52	36.0		82.25
22	10,380	75.00	10.9	Upper Marker	113.00

Overall Results for sample 8 : 6 Grape G3 - C

Number of peaks found: 20
 Noise: 0.6
 Corr. Area 1: 439.8

Region table for sample 8 : 6 Grape G3 - C

From To [bp]	Average Size [bp]	Corr. Area	Molarity [pmol/l]	Conc. [pg/μl]	% of Total	Size distribution Total in CV [%]
200 1,000	343	439.8	2,663.7	574.60	81	19.0



Peak table for sample 9 : 7 Grape G3 - D

Peak	Size [bp]	Conc. [pg/μl]	Molarity [pmol/l]	Observations	Aligned Migration Time
1	35	125.00	5,411.3	Lower Marker	43.00
2	40	154.08	5,893.8		43.71
3	48	81.26	2,569.9		44.99
4	70	25.43	546.9		47.60
5	236	20.77	133.2		63.60
6	252	22.72	136.4		65.07
7	261	35.57	206.2		65.87
8	276	34.56	189.4		67.25
9	284	50.21	267.6		67.96
10	299	52.94	268.4		69.29
11	315	35.53	171.0		70.57
12	324	46.48	217.1		71.33
13	332	33.26	151.7		71.95
14	342	71.19	315.1		72.76
15	360	48.86	205.9		74.13
16	370	42.51	174.2		74.94
17	388	31.14	121.5		76.41
18	401	39.86	150.6		77.41
19	430	40.36	142.3		79.07
20	451	22.60	75.9		80.30
21	479	17.55	55.6		81.92
22	10,380	75.00	10.9	Upper Marker	113.00

Overall Results for sample 9 : 7 Grape G3 - D

Number of peaks found: 20
 Noise: 0.6
 Corr. Area 1: 328.7

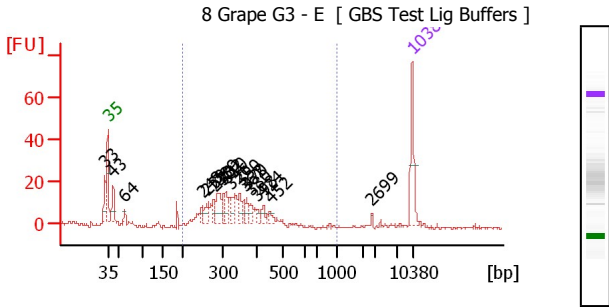
Region table for sample 9 : 7 Grape G3 - D

From To [bp]	Average Size [bp]	Corr. Area	Molarity [pmol/l]	Conc. [pg/μl]	% of Total	Size distribution Total in CV [%]
200 1,000	348	328.7	2,958.6	650.16	79	18.3

Assay Class: High Sensitivity DNA Assay
 Data Path: C:\... bioanalyzer\2100 expert\data\2017-08-07\2017-08-07_001.xad

Created: 8/7/2017 10:48:11 AM
 Modified: 8/7/2017 11:29:32 AM

Electropherogram Summary Continued ...



Peak table for sample 10 : 8 Grape G3 - E

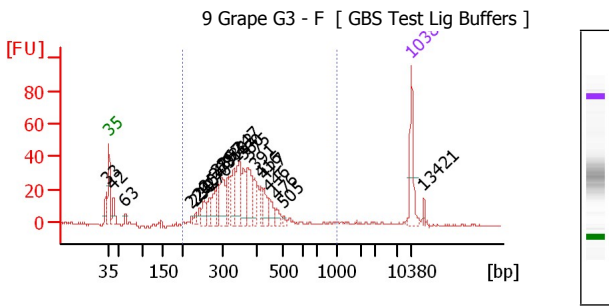
Peak	Size [bp]	Conc. [pg/μl]	Molarity [pmol/l]	Observations	Aligned Migration Time
1	33	0.00	0.0		42.33
2	35	125.00	5,411.3	Lower Marker	43.00
3	43	62.61	2,201.7		44.25
4	64	12.86	304.3		46.89
5	248	15.17	92.8		64.65
6	259	24.96	145.8		65.71
7	278	22.50	122.7		67.39
8	289	57.00	298.8		68.40
9	302	26.27	131.8		69.55
10	310	34.28	167.6		70.17
11	326	21.14	98.2		71.47
12	350	34.28	148.6		73.34
13	362	17.06	71.5		74.30
14	370	19.22	78.8		74.93
15	380	20.32	81.1		75.74
16	398	14.99	57.1		77.18
17	424	16.84	60.1		78.77
18	452	12.70	42.6		80.35
19	2,699	1.58	0.9		103.73
20	10,380	75.00	10.9	Upper Marker	113.00

Overall Results for sample 10 : 8 Grape G3 - E

Number of peaks found: 18
 Noise: 0.6
 Corr. Area 1: 266.4

Region table for sample 10 : 8 Grape G3 - E

From To [bp]	Average Size [bp]	Corr. Area	Molarity [pmol/l]	Conc. [pg/μl]	% of Size distribution Total in CV [%]
200 1,000	336	266.4	2,392.2	504.90	77 20.4



Peak table for sample 11 : 9 Grape G3 - F

Peak	Size [bp]	Conc. [pg/μl]	Molarity [pmol/l]	Observations	Aligned Migration Time
1	33	0.00	0.0		42.37
2	35	125.00	5,411.3	Lower Marker	43.00
3	42	51.90	1,877.2		44.06
4	63	12.62	301.4		46.82
5	220	9.14	62.8		62.14
6	230	14.50	95.3		63.06
7	240	15.39	97.0		63.98
8	254	36.68	219.0		65.19
9	270	42.34	237.8		66.64
10	279	46.34	251.4		67.51
11	286	39.63	209.8		68.14
12	297	96.12	489.7		69.15
13	316	42.77	205.2		70.65
14	332	57.97	264.3		71.96
15	347	100.68	439.0		73.17
16	360	65.05	274.1		74.13
17	375	97.80	395.4		75.34
18	391	41.70	161.5		76.65
19	416	26.46	96.3		78.29
20	427	42.34	150.2		78.92
21	446	33.51	113.8		80.03
22	476	20.67	65.8		81.77
23	505	8.95	26.9		83.41
24	10,380	75.00	10.9	Upper Marker	113.00

Overall Results for sample 11 : 9 Grape G3 - F

Number of peaks found: 23
 Noise: 0.5
 Corr. Area 1: 624.2

Region table for sample 11 : 9 Grape G3 - F

From To [bp]	Average Size [bp]	Corr. Area	Molarity [pmol/l]	Conc. [pg/μl]	% of Size distribution Total in CV [%]
200 1,000	359	624.2	4,049.7	901.66	88 24.4

Assay Class: High Sensitivity DNA Assay
Data Path: C:\... bioanalyzer\2100 expert\data\2017-08-07\2017-08-07_001.xad

Created: 8/7/2017 10:48:11 AM
Modified: 8/7/2017 11:29:32 AM

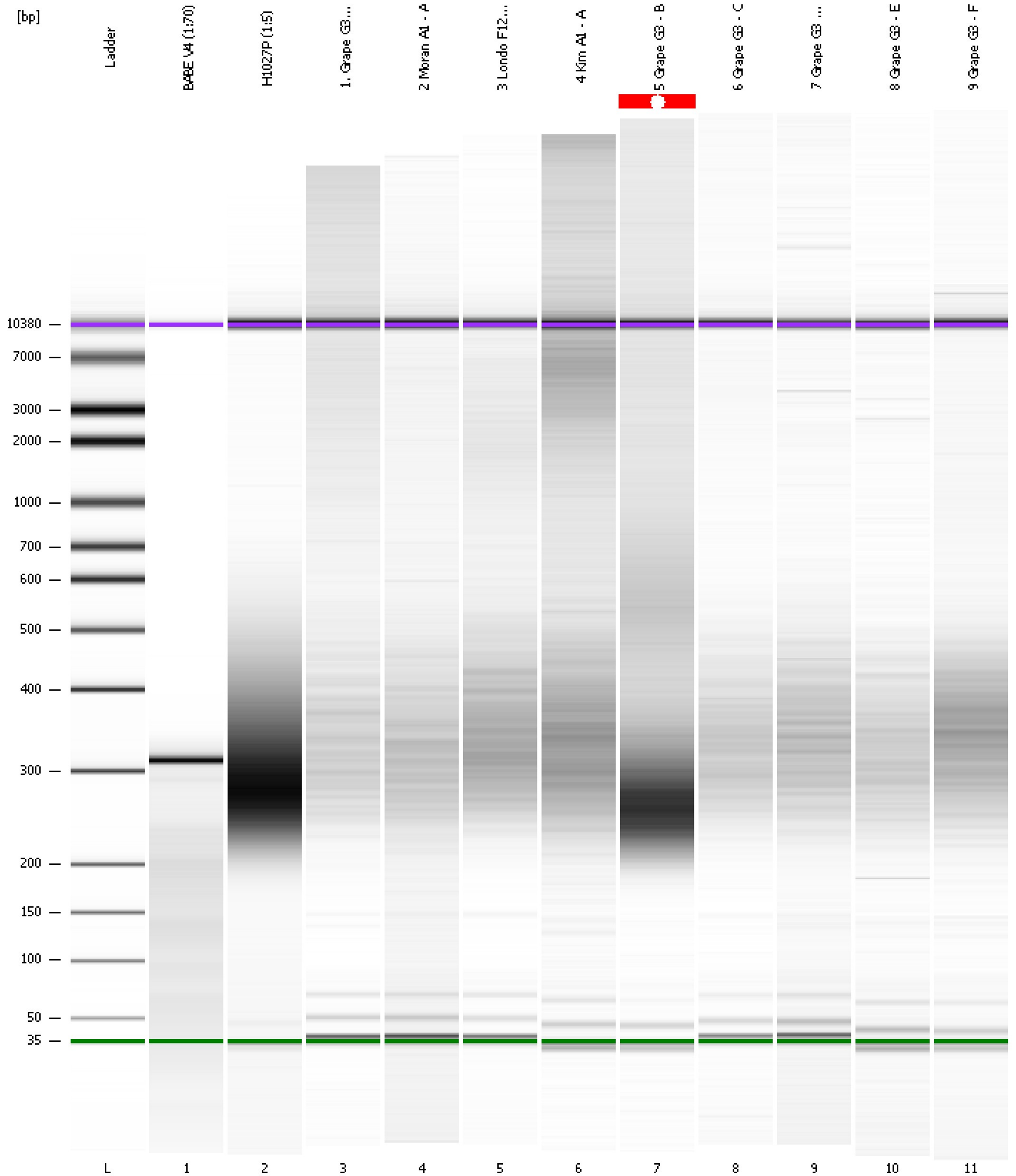
Electropherogram Summary Continued ...

Peak	Size [bp]	Conc. [pg/ μ l]	Molarity [pmol/l]	Observati ons	Aligned Migration Time
25	13,421	0.00	0.0		115.95

Assay Class: High Sensitivity DNA Assay
Data Path: C:\... bioanalyzer\2100 expert\data\2017-08-07\2017-08-07_001.xad

Created: 8/7/2017 10:48:11 AM
Modified: 8/7/2017 11:29:32 AM

Gel Image



Assay Class: High Sensitivity DNA Assay
Data Path: C:\... bioanalyzer\2100 expert\data\2017-08-07\2017-08-07_001.xad

Created: 8/7/2017 10:48:11 AM
Modified: 8/7/2017 11:29:32 AM

Curves

Standard Curve

