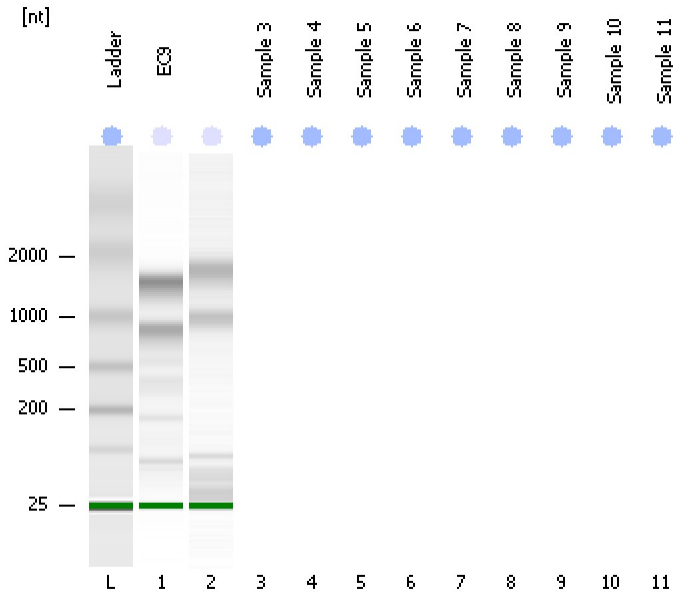


Assay Class: Eukaryote Total RNA Pico  
Data Path: C:\... bioanalyzer\2100 expert\data\2017-08-18\2017-08-18\_003.xad

Created: 8/18/2017 12:30:43 PM  
Modified: 8/18/2017 12:56:59 PM

**Electrophoresis File Run Summary**



Instrument Information:

Instrument Name: DE13701086      Firmware: C.01.069  
Serial#: DE13701086      Type: G2938B

Assay Information:

Assay Origin Path: C:\Program Files\Agilent\2100 bioanalyzer\2100 expert\assays\RNA\Eukaryote Total RNA Pico Series II.xsy

Assay Class: Eukaryote Total RNA Pico

Version: 2.6

Assay Comments: Total RNA Analysis pg sensitivity (Eukaryote)

© Copyright 2003 - 2009 Agilent Technologies, Inc.

Chip Information:

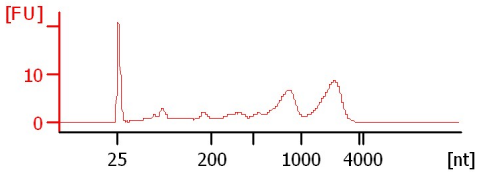
Chip Lot #:

Reagent Kit Lot #:

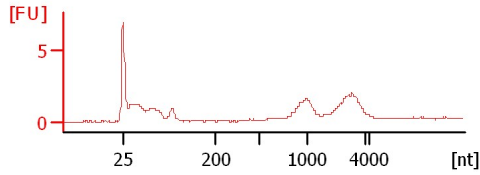
Chip Comments:

**EC9**

RIN: 8.40



RIN: 2.20



Assay Class: Eukaryote Total RNA Pico  
Data Path: C:\... bioanalyzer\2100 expert\data\2017-08-18\2017-08-18\_003.xad

Created: 8/18/2017 12:30:43 PM  
Modified: 8/18/2017 12:56:59 PM

**Electrophoresis File Run Summary (Chip Summary)**

Sample Name	Sample Comment	Status	Result Label	Result Color
EC9		✓	RIN: 8.40	
		✓	RIN: 2.20	
Sample 3				
Sample 4				
Sample 5				
Sample 6				
Sample 7				
Sample 8				
Sample 9				
Sample 10				
Sample 11				
Ladder		✓	All Other Samples	

**Chip Lot #**

**Reagent Kit Lot #**

**Chip Comments :**

Assay Class: Eukaryote Total RNA Pico  
Data Path: C:\... bioanalyzer\2100 expert\data\2017-08-18\2017-08-18\_003.xad

Created: 8/18/2017 12:30:43 PM  
Modified: 8/18/2017 12:56:59 PM

## Electrophoresis Assay Details

### General Analysis Settings

Number of Available Sample and Ladder Wells (Max.) : 12  
Minimum Visible Range [s] : 17  
Maximum Visible Range [s] : 70  
Start Analysis Time Range [s] : 18  
End Analysis Time Range [s] : 69  
Ladder Concentration [pg/ $\mu$ l] : 1000  
Lower Marker Concentration [pg/ $\mu$ l] : 0  
Upper Marker Concentration [pg/ $\mu$ l] : 0  
Used Lower Marker for Quantitation  
Standard Curve Fit is Logarithmic  
Show Data Aligned to Lower Marker

### Integrator Settings

Integration Start Time [s] : 18  
Integration End Time [s] : 69  
Slope Threshold : 0.6  
Height Threshold [FU] : 0.5  
Area Threshold : 0.2  
Width Threshold [s] : 0.3  
Baseline Plateau [s] : 6

### Filter Settings

Filter Width [s] : 0.5  
Polynomial Order : 4

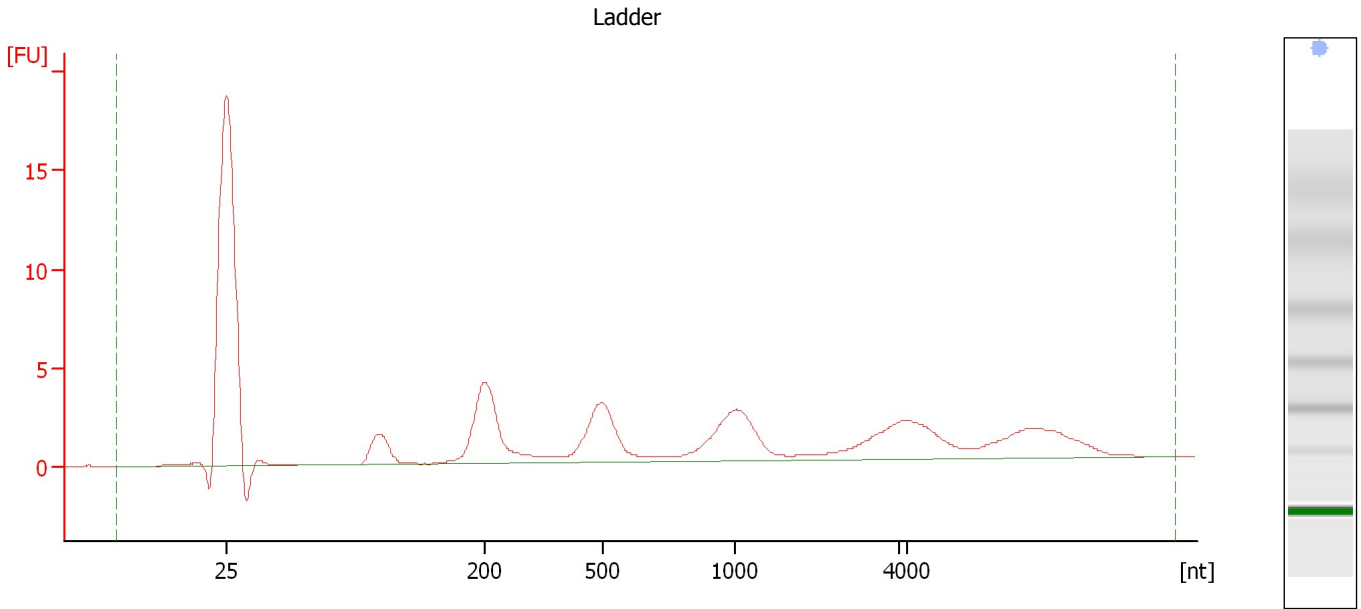
### Ladder

Ladder Peak	Size
1	25
2	200
3	500
4	1000
5	2000
6	4000

Assay Class: Eukaryote Total RNA Pico  
Data Path: C:\... bioanalyzer\2100 expert\data\2017-08-18\2017-08-18\_003.xad

Created: 8/18/2017 12:30:43 PM  
Modified: 8/18/2017 12:56:59 PM

**Electropherogram Summary**



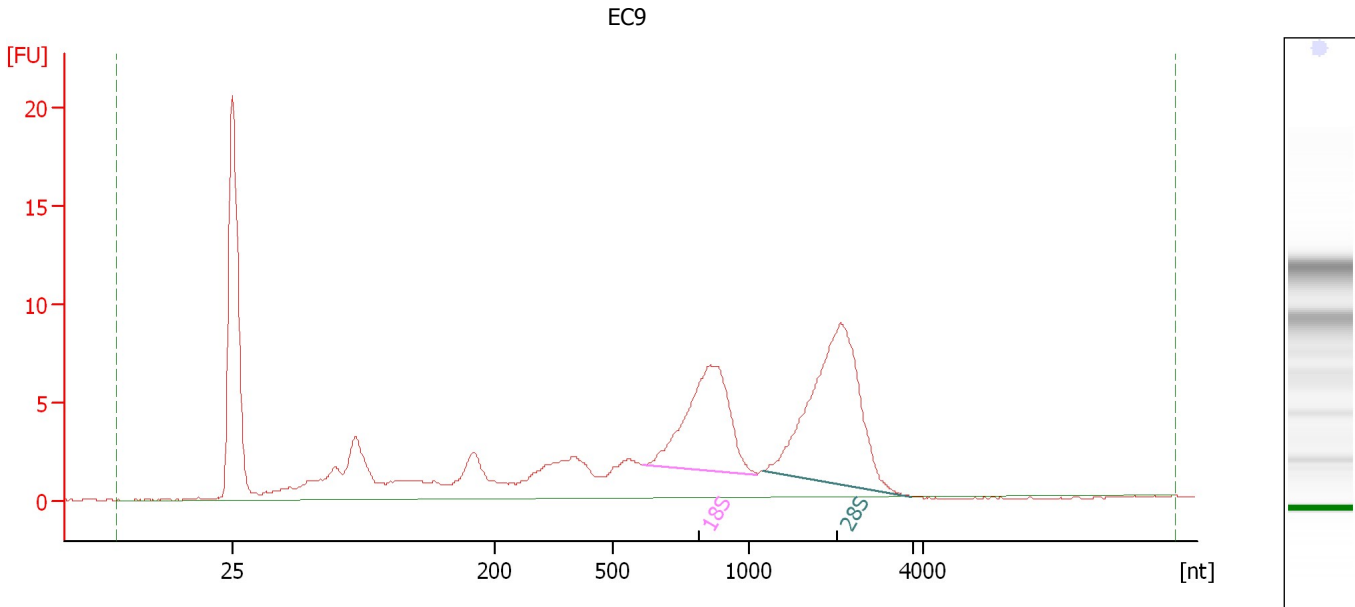
**Overall Results for Ladder**

RNA Area:	71.8	Result Flagging Color:	<span style="background-color: #add8e6; border: 1px solid black; display: inline-block; width: 20px; height: 10px;"></span>
RNA Concentration:	1,000 pg/μl	Result Flagging Label:	All Other Samples

Assay Class: Eukaryote Total RNA Pico  
Data Path: C:\... bioanalyzer\2100 expert\data\2017-08-18\2017-08-18\_003.xad

Created: 8/18/2017 12:30:43 PM  
Modified: 8/18/2017 12:56:59 PM

**Electropherogram Summary Continued ...**



**Overall Results for sample 1 : EC9**

RNA Area: 156.2                      RNA Integrity Number (RIN): 8.4 (B.02.08)  
RNA Concentration: 2,175 pg/μl                      Result Flagging Color:   
rRNA Ratio [28s / 18s]: 1.5                      Result Flagging Label: RIN: 8.40

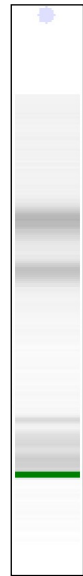
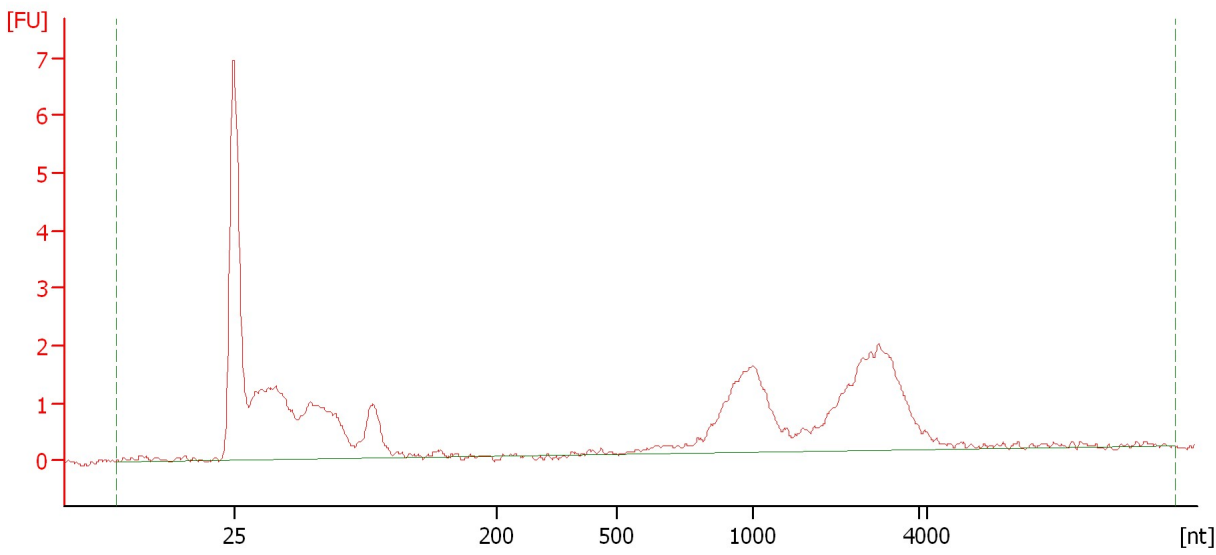
**Fragment table for sample 1 : EC9**

Name	Start Size [nt]	End Size [nt]	Area	% of total Area
18S	613	1,052	26.5	17.0
28S	1,085	1,982	40.5	25.9

Assay Class: Eukaryote Total RNA Pico  
Data Path: C:\... bioanalyzer\2100 expert\data\2017-08-18\2017-08-18\_003.xad

Created: 8/18/2017 12:30:43 PM  
Modified: 8/18/2017 12:56:59 PM

**Electropherogram Summary Continued ...**



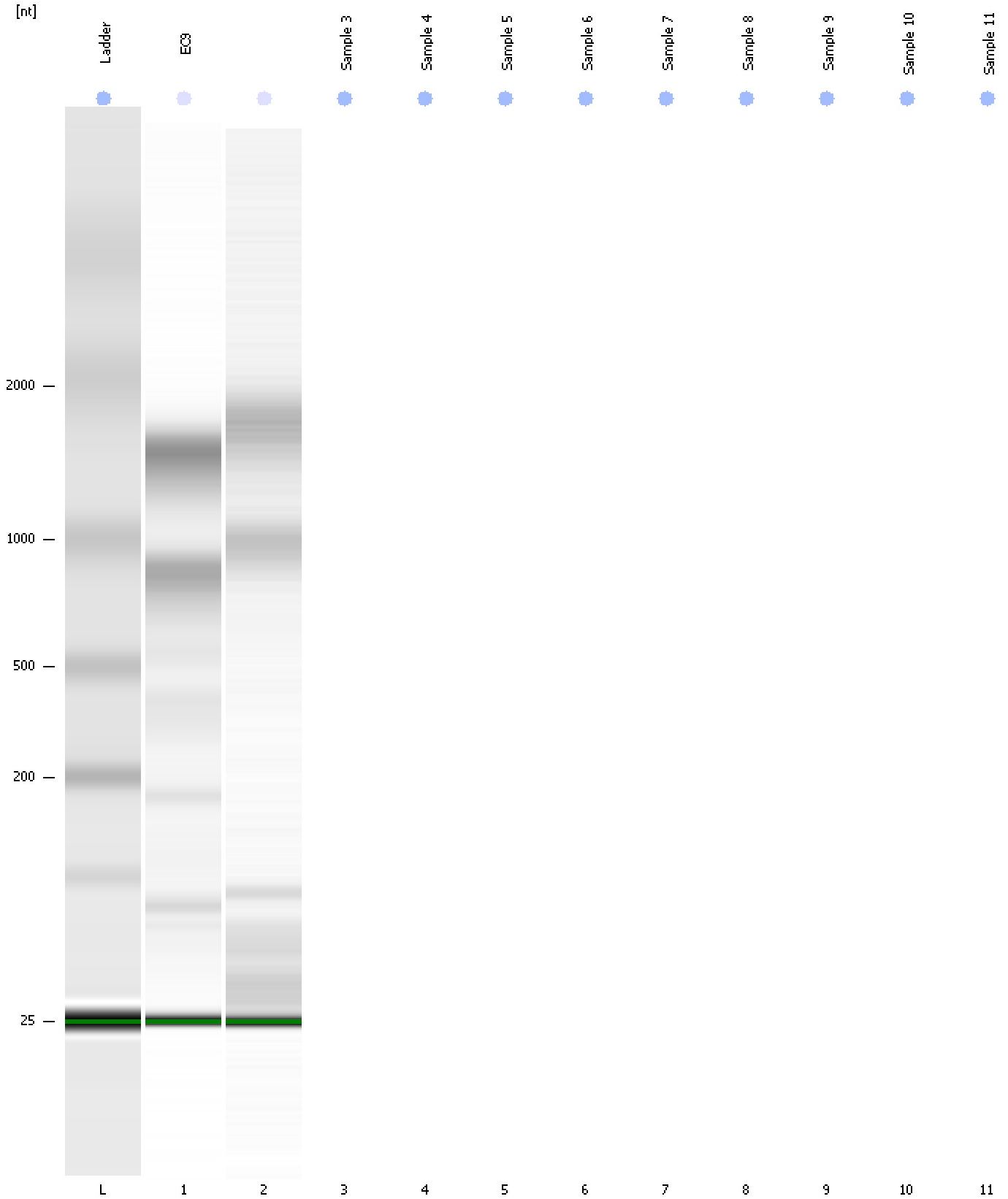
**Overall Results for sample 2 :**

RNA Area:	39.2	RNA Integrity Number (RIN):	2.2 (B.02.08)
RNA Concentration:	546 µg/µl	Result Flagging Color:	<span style="background-color: #ccccff; border: 1px solid black; display: inline-block; width: 20px; height: 10px;"></span>
rRNA Ratio [28s / 18s]:	0.0	Result Flagging Label:	RIN: 2.20

Assay Class: Eukaryote Total RNA Pico  
Data Path: C:\... bioanalyzer\2100 expert\data\2017-08-18\2017-08-18\_003.xad

Created: 8/18/2017 12:30:43 PM  
Modified: 8/18/2017 12:56:59 PM

**Gel Image**



Assay Class: Eukaryote Total RNA Pico  
Data Path: C:\... bioanalyzer\2100 expert\data\2017-08-18\2017-08-18\_003.xad

Created: 8/18/2017 12:30:43 PM  
Modified: 8/18/2017 12:56:59 PM

**Invalid Samples**

- Sample 3 has not been run, no results available.
- Sample 4 has not been run, no results available.
- Sample 5 has not been run, no results available.
- Sample 6 has not been run, no results available.
- Sample 7 has not been run, no results available.
- Sample 8 has not been run, no results available.
- Sample 9 has not been run, no results available.
- Sample 10 has not been run, no results available.
- Sample 11 has not been run, no results available.