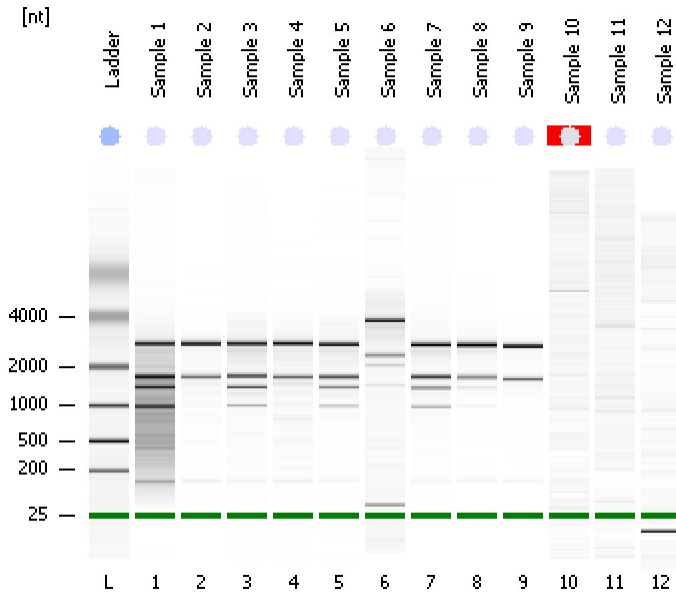


Assay Class: Plant RNA Nano
Data Path: C:\... bioanalyzer\2100 expert\data\2017-09-13\2017-09-13_004.xad

Created: 9/13/2017 4:33:58 PM
Modified: 9/13/2017 4:57:46 PM

Electrophoresis File Run Summary



Instrument Information:

Instrument Name: DE13701086 Firmware: C.01.069
Serial#: DE13701086 Type: G2938B

Assay Information:

Assay Origin Path: C:\Program Files\Agilent\2100 bioanalyzer\2100 expert\assays\RNA\Plant RNA Nano.xsy

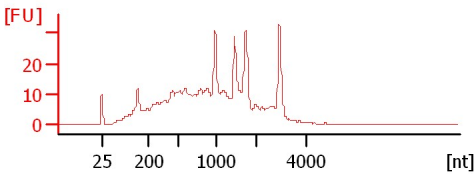
Assay Class: Plant RNA Nano
Version: 1.3
Assay Comments: Total RNA Analysis ng sensitivity (Plant)

© Copyright 2003 - 2009 Agilent Technologies, Inc.

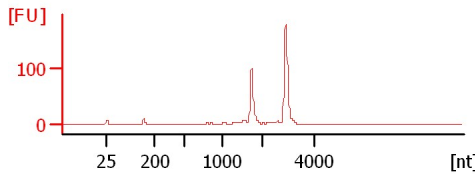
Chip Information:

Chip Lot #:
Reagent Kit Lot #:
Chip Comments:

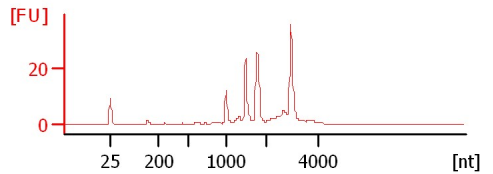
Sample 1
RIN: 4.90



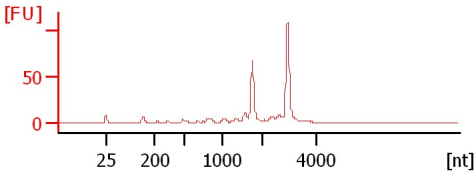
Sample 2
RIN: 9



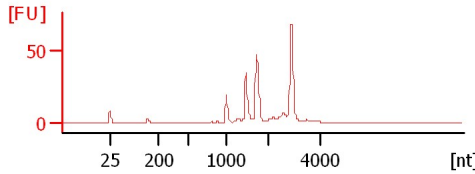
Sample 3
RIN: 7.50



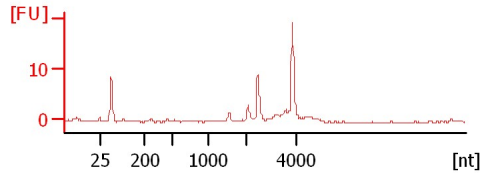
Sample 4
RIN: 8.30



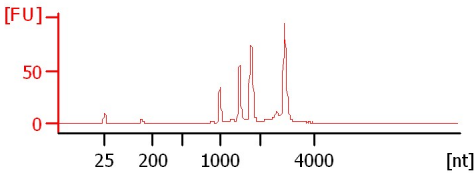
Sample 5
RIN: 7.80



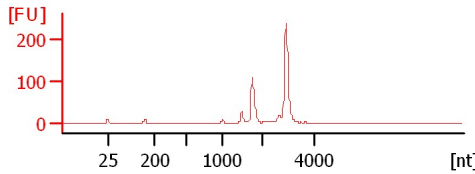
Sample 6
RIN: 8.60



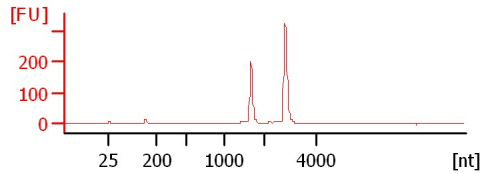
Sample 7
RIN: 7.60



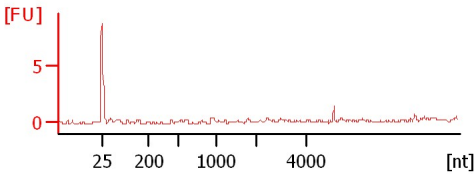
Sample 8
RIN: 9.10



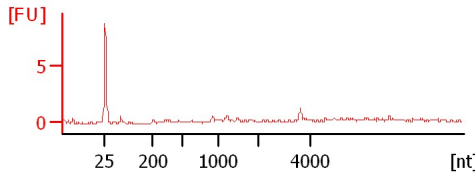
Sample 9
RIN: 9.90



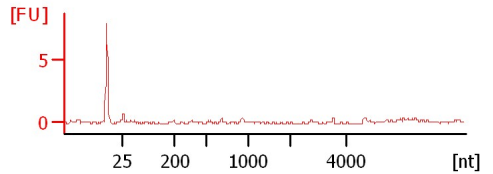
Sample 10
RIN N/A



Sample 11
RIN: 3.10



Sample 12
RIN: 2.40



Assay Class: Plant RNA Nano
Data Path: C:\... bioanalyzer\2100 expert\data\2017-09-13\2017-09-13_004.xad

Created: 9/13/2017 4:33:58 PM
Modified: 9/13/2017 4:57:46 PM

Electrophoresis File Run Summary (Chip Summary)

Sample Name	Sample Comment	Status	Result Label	Result Color
Sample 1		✓	RIN: 4.90	
Sample 2		✓	RIN:9	
Sample 3		✓	RIN: 7.50	
Sample 4		✓	RIN: 8.30	
Sample 5		✓	RIN: 7.80	
Sample 6		✓	RIN: 8.60	
Sample 7		✓	RIN: 7.60	
Sample 8		✓	RIN: 9.10	
Sample 9		✓	RIN: 9.90	
Sample 10		✓	RIN N/A	
Sample 11		✓	RIN: 3.10	
Sample 12		✓	RIN: 2.40	
Ladder		✓	All Other Samples	

Chip Lot #

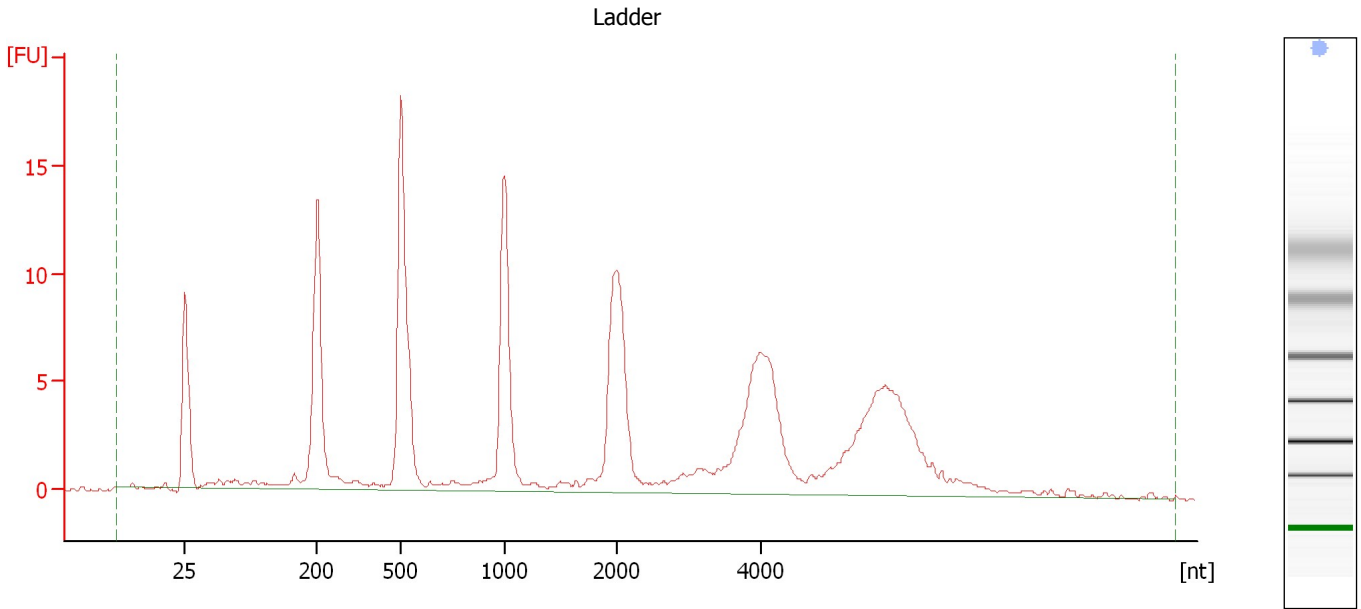
Reagent Kit Lot #

Chip Comments :

Assay Class: Plant RNA Nano
Data Path: C:\... bioanalyzer\2100 expert\data\2017-09-13\2017-09-13_004.xad

Created: 9/13/2017 4:33:58 PM
Modified: 9/13/2017 4:57:46 PM

Electropherogram Summary



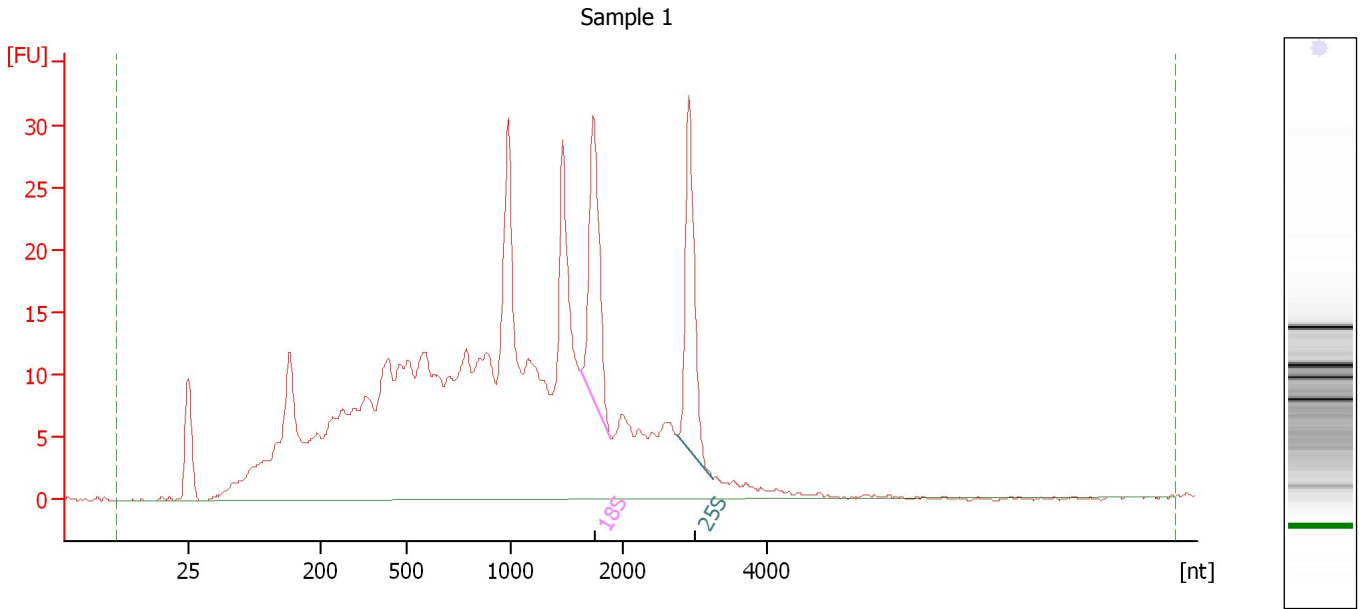
Overall Results for Ladder

RNA Area:	164.2	Result Flagging Color:	
RNA Concentration:	150 ng/μl	Result Flagging Label:	All Other Samples

Assay Class: Plant RNA Nano
Data Path: C:\... bioanalyzer\2100 expert\data\2017-09-13\2017-09-13_004.xad

Created: 9/13/2017 4:33:58 PM
Modified: 9/13/2017 4:57:46 PM

Electropherogram Summary Continued ...



Overall Results for sample 1 : Sample 1

RNA Area:	579.8	RNA Integrity Number (RIN):	4.9 (B.02.08)
RNA Concentration:	530 ng/μl	Result Flagging Color:	
rRNA Ratio [25s / 18s]:	1.0	Result Flagging Label:	RIN: 4.90

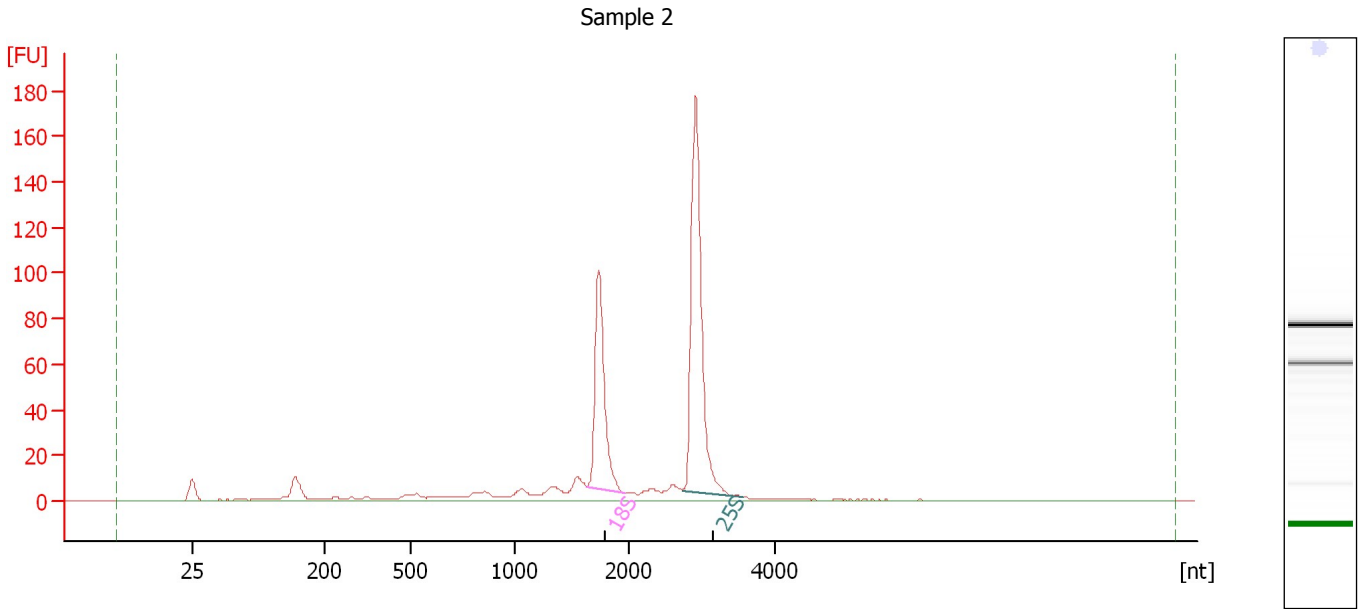
Fragment table for sample 1 : Sample 1

Name	Start Size [nt]	End Size [nt]	Area	% of total Area
18S	1,630	1,907	30.0	5.2
25S	2,755	3,241	29.1	5.0

Assay Class: Plant RNA Nano
Data Path: C:\... bioanalyzer\2100 expert\data\2017-09-13\2017-09-13_004.xad

Created: 9/13/2017 4:33:58 PM
Modified: 9/13/2017 4:57:46 PM

Electropherogram Summary Continued ...



Overall Results for sample 2 : Sample 2

RNA Area: 512.5 RNA Integrity Number (RIN): 9 (B.02.08)
RNA Concentration: 468 ng/μl Result Flagging Color:
rRNA Ratio [25s / 18s]: 1.8 Result Flagging Label: RIN:9

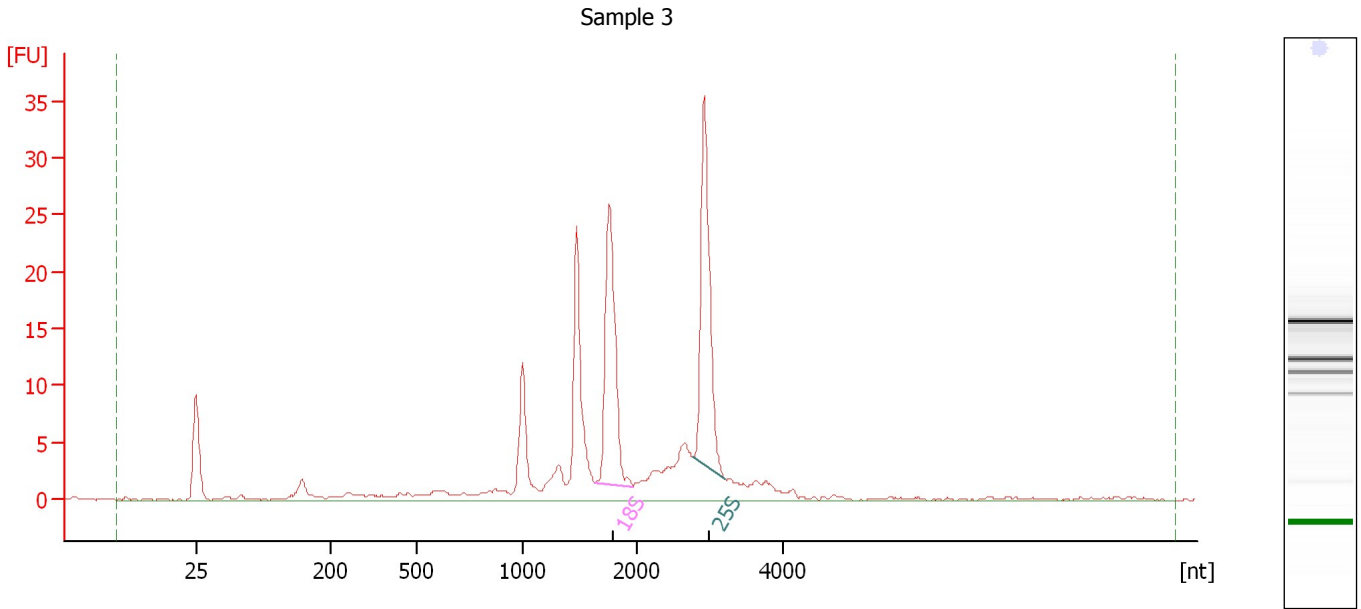
Fragment table for sample 2 : Sample 2

Name	Start Size [nt]	End Size [nt]	Area	% of total Area
18S	1,636	1,968	110.2	21.5
25S	2,740	3,574	202.6	39.5

Assay Class: Plant RNA Nano
 Data Path: C:\... bioanalyzer\2100 expert\data\2017-09-13\2017-09-13_004.xad

Created: 9/13/2017 4:33:58 PM
 Modified: 9/13/2017 4:57:46 PM

Electropherogram Summary Continued ...



Overall Results for sample 3 : Sample 3

RNA Area:	173.4	RNA Integrity Number (RIN):	7.5 (B.02.08)
RNA Concentration:	158 ng/μl	Result Flagging Color:	
rRNA Ratio [25s / 18s]:	1.1	Result Flagging Label:	RIN: 7.50

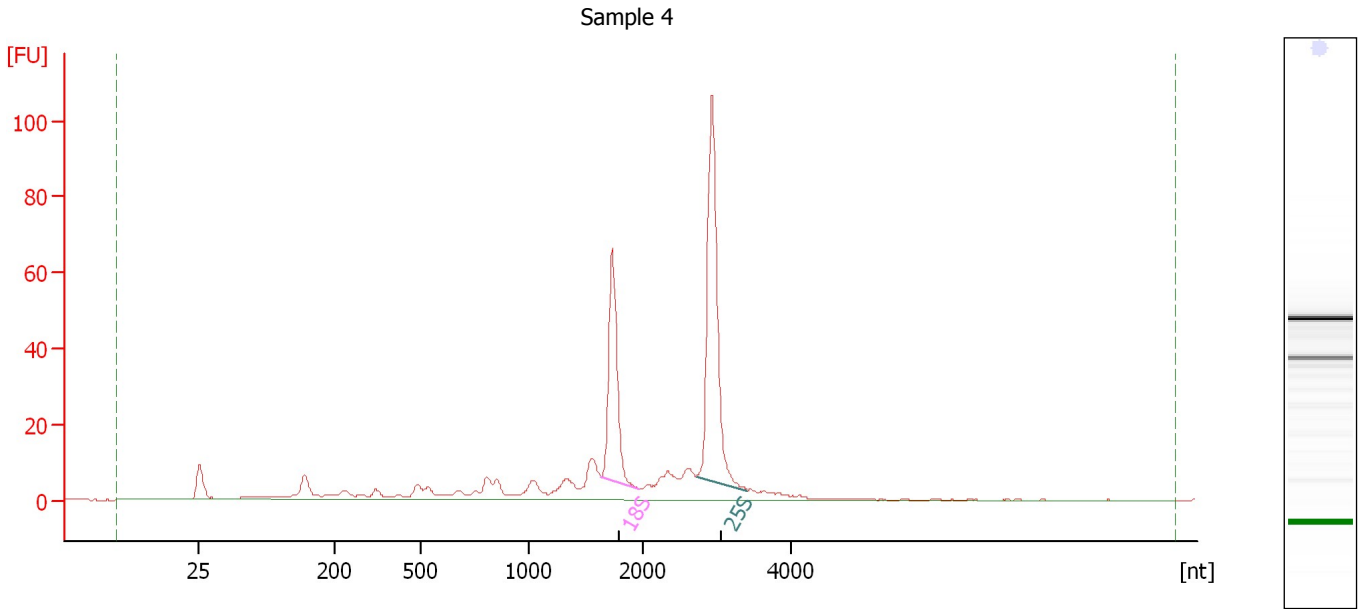
Fragment table for sample 3 : Sample 3

Name	Start Size [nt]	End Size [nt]	Area	% of total Area
18S	1,634	1,972	30.9	17.8
25S	2,770	3,204	32.8	18.9

Assay Class: Plant RNA Nano
Data Path: C:\... bioanalyzer\2100 expert\data\2017-09-13\2017-09-13_004.xad

Created: 9/13/2017 4:33:58 PM
Modified: 9/13/2017 4:57:46 PM

Electropherogram Summary Continued ...



Overall Results for sample 4 : Sample 4

RNA Area:	379.5	RNA Integrity Number (RIN):	8.3 (B.02.08)
RNA Concentration:	347 ng/μl	Result Flagging Color:	
rRNA Ratio [25s / 18s]:	1.8	Result Flagging Label:	RIN: 8.30

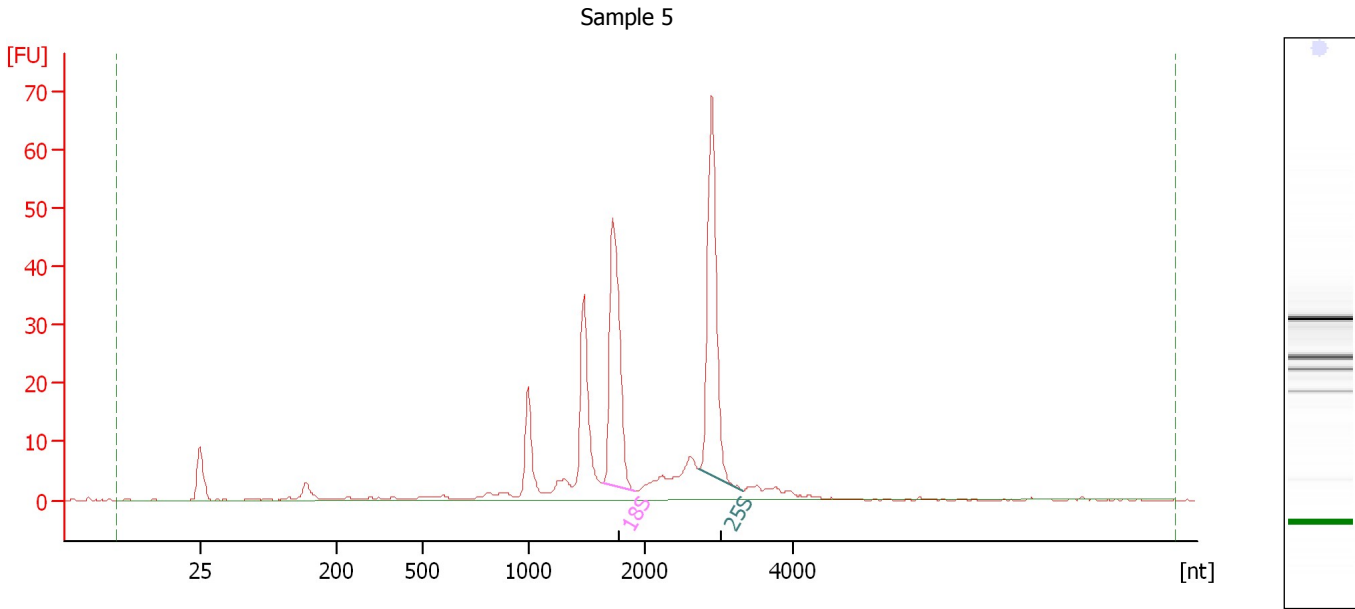
Fragment table for sample 4 : Sample 4

Name	Start Size [nt]	End Size [nt]	Area	% of total Area
18S	1,639	1,976	62.8	16.5
25S	2,726	3,418	111.9	29.5

Assay Class: Plant RNA Nano
Data Path: C:\... bioanalyzer\2100 expert\data\2017-09-13\2017-09-13_004.xad

Created: 9/13/2017 4:33:58 PM
Modified: 9/13/2017 4:57:46 PM

Electropherogram Summary Continued ...



Overall Results for sample 5 : Sample 5

RNA Area: 270.5 RNA Integrity Number (RIN): 7.8 (B.02.08)
RNA Concentration: 247 ng/μl Result Flagging Color:
rRNA Ratio [25s / 18s]: 1.1 Result Flagging Label: RIN: 7.80

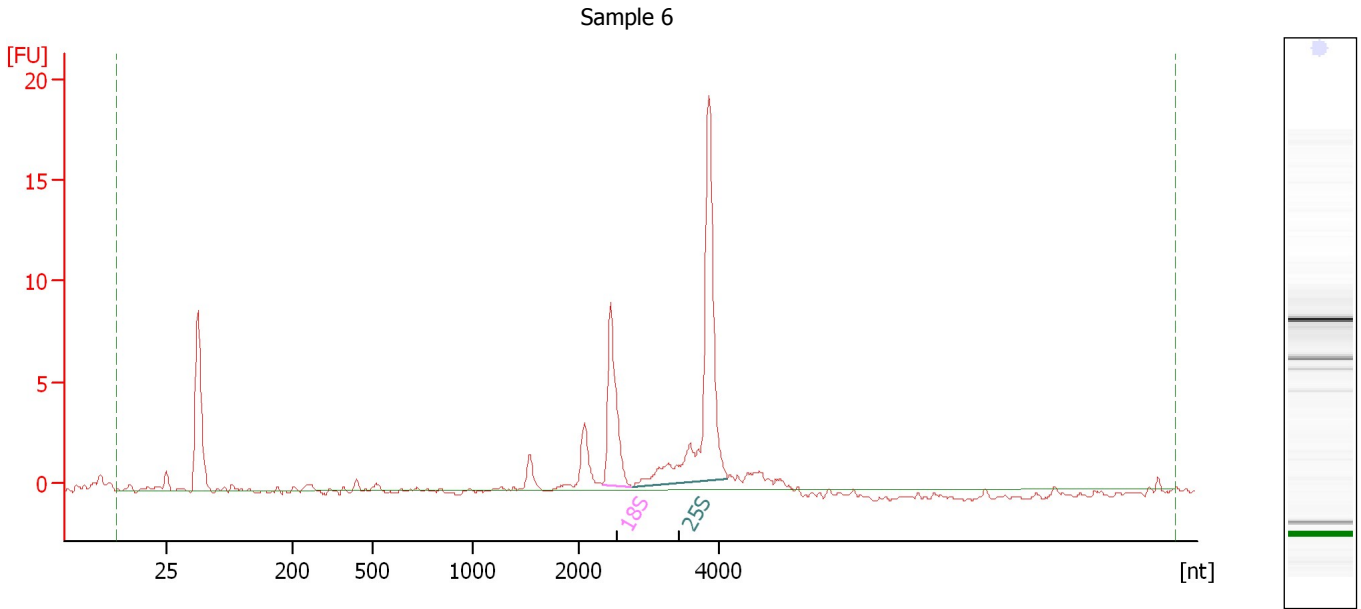
Fragment table for sample 5 : Sample 5

Name	Start Size [nt]	End Size [nt]	Area	% of total Area
18S	1,632	1,921	56.9	21.0
25S	2,741	3,316	64.3	23.8

Assay Class: Plant RNA Nano
Data Path: C:\... bioanalyzer\2100 expert\data\2017-09-13\2017-09-13_004.xad

Created: 9/13/2017 4:33:58 PM
Modified: 9/13/2017 4:57:46 PM

Electropherogram Summary Continued ...



Overall Results for sample 6 : Sample 6

RNA Area:	61.1	RNA Integrity Number (RIN):	8.6 (B.02.08)
RNA Concentration:	56 ng/μl	Result Flagging Color:	
rRNA Ratio [25s / 18s]:	2.4	Result Flagging Label:	RIN: 8.60

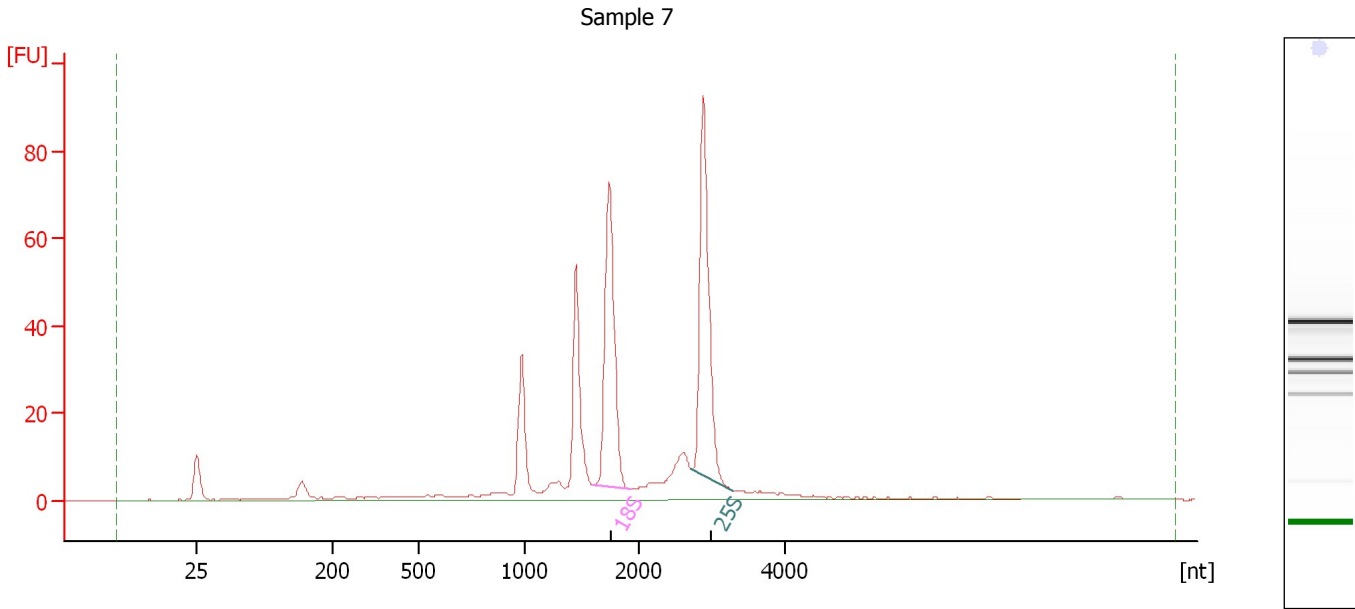
Fragment table for sample 6 : Sample 6

Name	Start Size [nt]	End Size [nt]	Area	% of total Area
18S	2,323	2,740	9.2	15.0
25S	2,770	4,128	22.3	36.6

Assay Class: Plant RNA Nano
Data Path: C:\... bioanalyzer\2100 expert\data\2017-09-13\2017-09-13_004.xad

Created: 9/13/2017 4:33:58 PM
Modified: 9/13/2017 4:57:46 PM

Electropherogram Summary Continued ...



Overall Results for sample 7 : Sample 7

RNA Area:	401.6	RNA Integrity Number (RIN):	7.6 (B.02.08)
RNA Concentration:	367 ng/μl	Result Flagging Color:	
rRNA Ratio [25s / 18s]:	1.1	Result Flagging Label:	RIN: 7.60

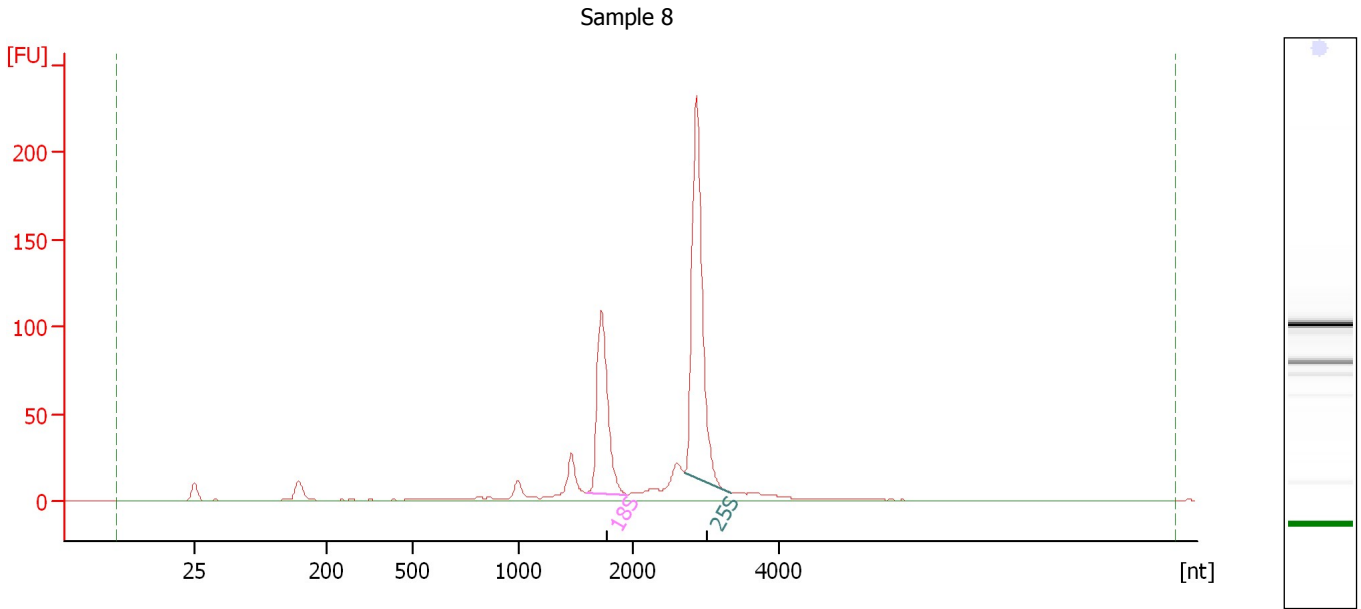
Fragment table for sample 7 : Sample 7

Name	Start Size [nt]	End Size [nt]	Area	% of total Area
18S	1,607	1,927	84.5	21.0
25S	2,726	3,276	90.1	22.4

Assay Class: Plant RNA Nano
Data Path: C:\... bioanalyzer\2100 expert\data\2017-09-13\2017-09-13_004.xad

Created: 9/13/2017 4:33:58 PM
Modified: 9/13/2017 4:57:46 PM

Electropherogram Summary Continued ...



Overall Results for sample 8 : Sample 8

RNA Area:	661.6	RNA Integrity Number (RIN):	9.1 (B.02.08)
RNA Concentration:	604 ng/μl	Result Flagging Color:	
rRNA Ratio [25s / 18s]:	1.8	Result Flagging Label:	RIN: 9.10

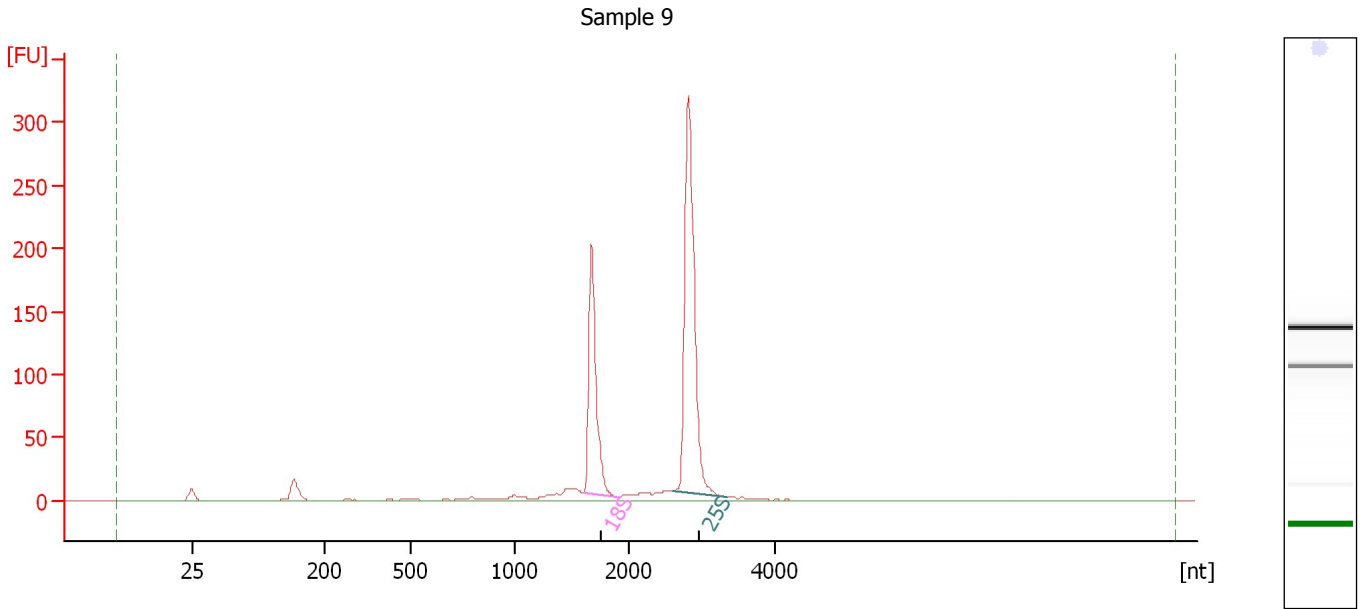
Fragment table for sample 8 : Sample 8

Name	Start Size [nt]	End Size [nt]	Area	% of total Area
18S	1,592	1,951	141.3	21.4
25S	2,711	3,337	257.0	38.8

Assay Class: Plant RNA Nano
Data Path: C:\... bioanalyzer\2100 expert\data\2017-09-13\2017-09-13_004.xad

Created: 9/13/2017 4:33:58 PM
Modified: 9/13/2017 4:57:46 PM

Electropherogram Summary Continued ...



Overall Results for sample 9 : Sample 9

RNA Area: 741.1 RNA Integrity Number (RIN): 9.9 (B.02.08)
RNA Concentration: 677 ng/μl Result Flagging Color:
rRNA Ratio [25s / 18s]: 1.8 Result Flagging Label: RIN: 9.90

Fragment table for sample 9 : Sample 9

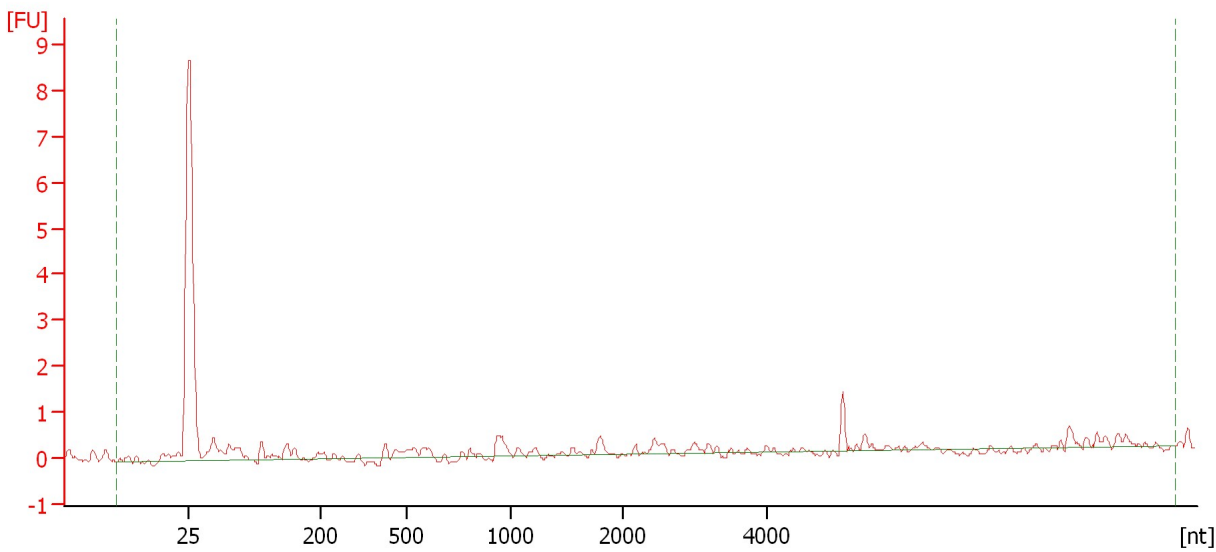
Name	Start Size [nt]	End Size [nt]	Area	% of total Area
18S	1,607	1,892	193.1	26.1
25S	2,623	3,355	351.4	47.4

Assay Class: Plant RNA Nano
Data Path: C:\... bioanalyzer\2100 expert\data\2017-09-13\2017-09-13_004.xad

Created: 9/13/2017 4:33:58 PM
Modified: 9/13/2017 4:57:46 PM

Electropherogram Summary Continued ...

Sample 10



Overall Results for sample 10 : Sample 10

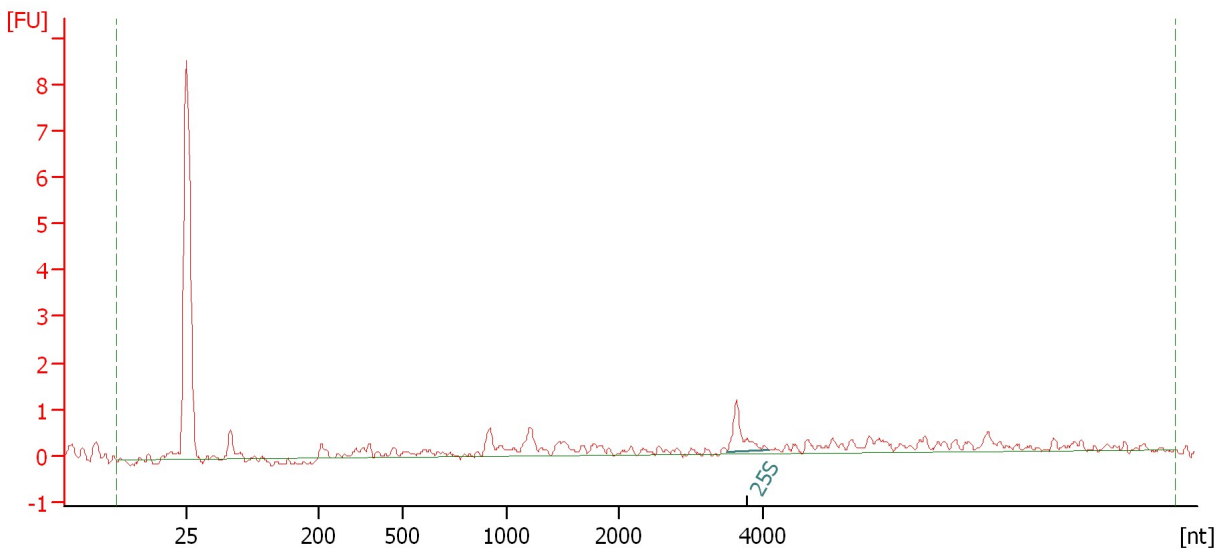
RNA Area:	10.3	RNA Integrity Number (RIN):	N/A (B.02.08)
RNA Concentration:	9 ng/μl	Result Flagging Color:	
rRNA Ratio [25s / 18s]:	0.0	Result Flagging Label:	RIN N/A

Assay Class: Plant RNA Nano
Data Path: C:\... bioanalyzer\2100 expert\data\2017-09-13\2017-09-13_004.xad

Created: 9/13/2017 4:33:58 PM
Modified: 9/13/2017 4:57:46 PM

Electropherogram Summary Continued ...

Sample 11



Overall Results for sample 11 : Sample 11

RNA Area:	14.8	RNA Integrity Number (RIN):	3.1 (B.02.08)
RNA Concentration:	13 ng/μl	Result Flagging Color:	
rRNA Ratio [25s / 18s]:	0.0	Result Flagging Label:	RIN: 3.10

Fragment table for sample 11 : Sample 11

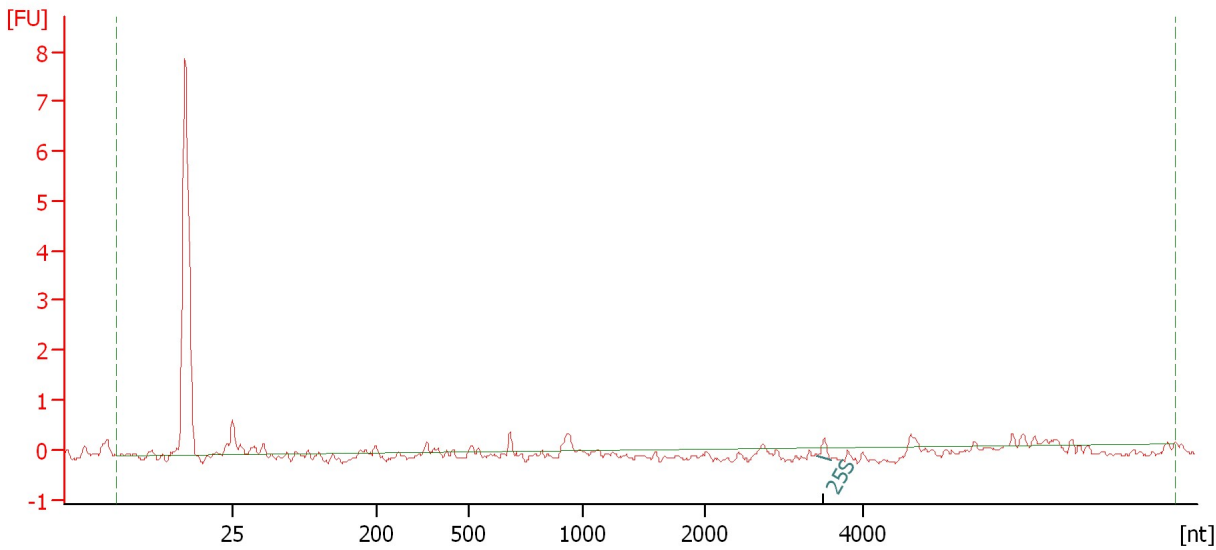
Name	Start Size [nt]	End Size [nt]	Area	% of total Area
25S	3,509	4,100	1.1	7.7

Assay Class: Plant RNA Nano
Data Path: C:\... bioanalyzer\2100 expert\data\2017-09-13\2017-09-13_004.xad

Created: 9/13/2017 4:33:58 PM
Modified: 9/13/2017 4:57:46 PM

Electropherogram Summary Continued ...

Sample 12



Overall Results for sample 12 : Sample 12

RNA Area:	13.9	RNA Integrity Number (RIN):	2.4 (B.02.08)
RNA Concentration:	13 ng/μl	Result Flagging Color:	
rRNA Ratio [25s / 18s]:	0.0	Result Flagging Label:	RIN: 2.40

Fragment table for sample 12 : Sample 12

Name	Start Size [nt]	End Size [nt]	Area	% of total Area
25S	3,430	3,592	0.2	1.4

Assay Class: Plant RNA Nano
Data Path: C:\... bioanalyzer\2100 expert\data\2017-09-13\2017-09-13_004.xad

Created: 9/13/2017 4:33:58 PM
Modified: 9/13/2017 4:57:46 PM

Gel Image

