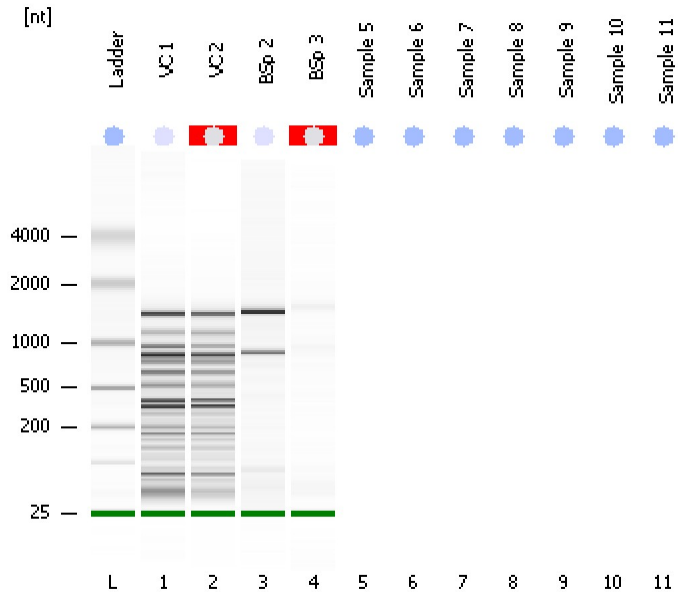


Assay Class: Eukaryote Total RNA Pico
 Data Path: C:\... bioanalyzer\2100 expert\data\2017-09-27\2017-09-27_002.xad

Created: 9/27/2017 2:27:58 PM
 Modified: 9/27/2017 2:40:53 PM

Electrophoresis File Run Summary



Instrument Information:

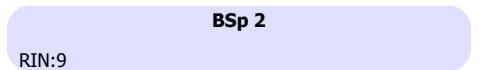
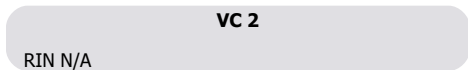
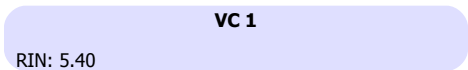
Instrument Name: DE13701086 Firmware: C.01.069
 Serial#: DE13701086 Type: G2938B

Assay Information:

Assay Origin Path: C:\Program Files\Agilent\2100 bioanalyzer\2100 expert\assays\RNA\Eukaryote Total RNA Pico Series II.xsy
 Assay Class: Eukaryote Total RNA Pico
 Version: 2.6
 Assay Comments: Total RNA Analysis pg sensitivity (Eukaryote)
 © Copyright 2003 - 2009 Agilent Technologies, Inc.

Chip Information:

Chip Lot #:
 Reagent Kit Lot #:
 Chip Comments:



Assay Class: Eukaryote Total RNA Pico
 Data Path: C:\... bioanalyzer\2100 expert\data\2017-09-27\2017-09-27_002.xad

Created: 9/27/2017 2:27:58 PM
 Modified: 9/27/2017 2:40:53 PM

Electrophoresis File Run Summary (Chip Summary)

Sample Name	Sample Comment	Status	Result Label	Result Color
VC 1		✓	RIN: 5.40	
VC 2		✓	RIN N/A	
BSp 2		✓	RIN:9	
BSp 3		✓	RIN N/A	
Sample 5				
Sample 6				
Sample 7				
Sample 8				
Sample 9				
Sample 10				
Sample 11				
Ladder		✓	All Other Samples	

Chip Lot #

Reagent Kit Lot #

Chip Comments :

Assay Class: Eukaryote Total RNA Pico
Data Path: C:\... bioanalyzer\2100 expert\data\2017-09-27\2017-09-27_002.xad

Created: 9/27/2017 2:27:58 PM
Modified: 9/27/2017 2:40:53 PM

Electrophoresis Assay Details

General Analysis Settings

Number of Available Sample and Ladder Wells (Max.) : 12
Minimum Visible Range [s] : 17
Maximum Visible Range [s] : 70
Start Analysis Time Range [s] : 18
End Analysis Time Range [s] : 69
Ladder Concentration [pg/ μ l] : 1000
Lower Marker Concentration [pg/ μ l] : 0
Upper Marker Concentration [pg/ μ l] : 0
Used Lower Marker for Quantitation
Standard Curve Fit is Logarithmic
Show Data Aligned to Lower Marker

Integrator Settings

Integration Start Time [s] : 18
Integration End Time [s] : 69
Slope Threshold : 0.6
Height Threshold [FU] : 0.5
Area Threshold : 0.2
Width Threshold [s] : 0.3
Baseline Plateau [s] : 6

Filter Settings

Filter Width [s] : 0.5
Polynomial Order : 4

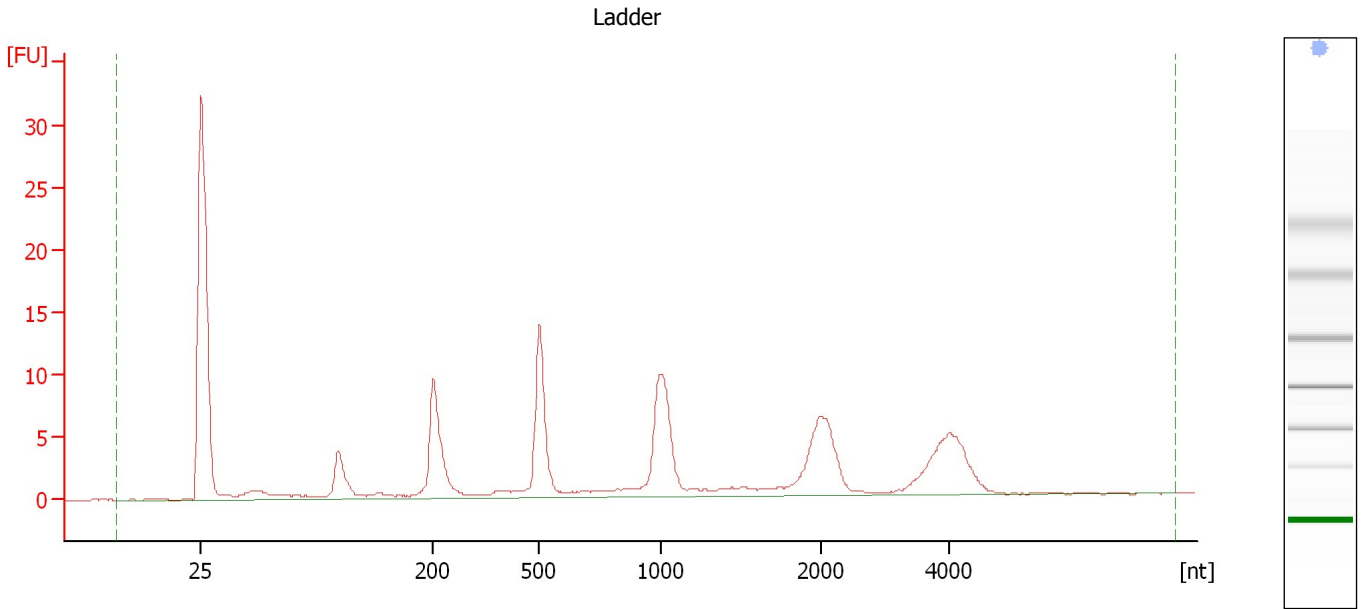
Ladder

Ladder Peak	Size
1	25
2	200
3	500
4	1000
5	2000
6	4000

Assay Class: Eukaryote Total RNA Pico
Data Path: C:\... bioanalyzer\2100 expert\data\2017-09-27\2017-09-27_002.xad

Created: 9/27/2017 2:27:58 PM
Modified: 9/27/2017 2:40:53 PM

Electropherogram Summary



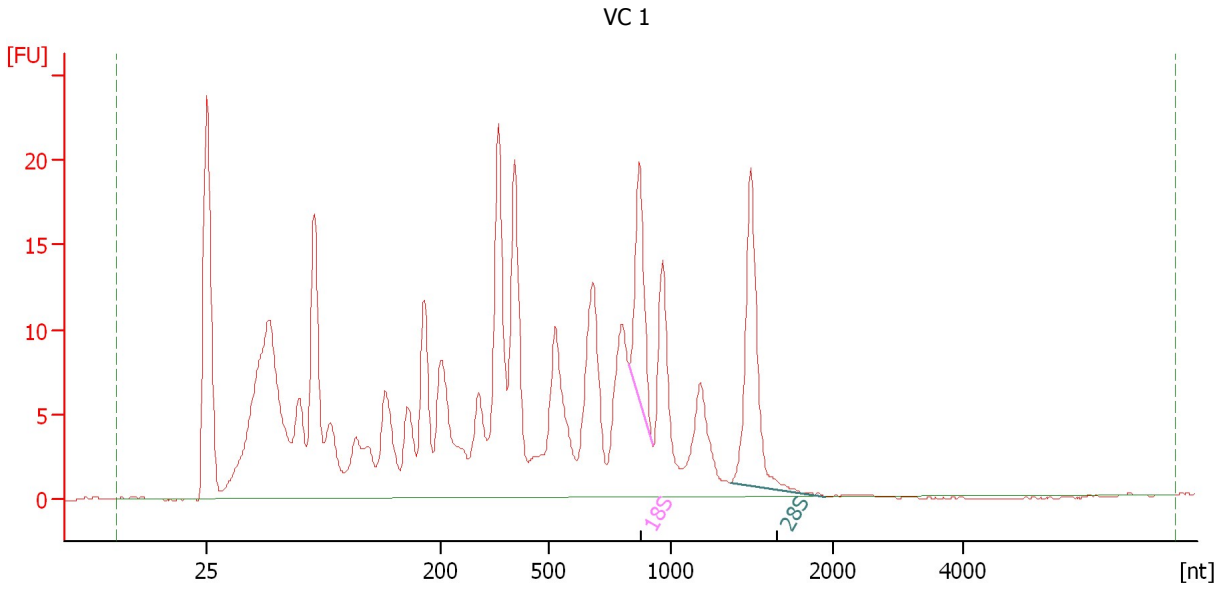
Overall Results for Ladder

RNA Area:	127.4	Result Flagging Color:	
RNA Concentration:	1,000 pg/μl	Result Flagging Label:	All Other Samples

Assay Class: Eukaryote Total RNA Pico
Data Path: C:\... bioanalyzer\2100 expert\data\2017-09-27\2017-09-27_002.xad

Created: 9/27/2017 2:27:58 PM
Modified: 9/27/2017 2:40:53 PM

Electropherogram Summary Continued ...



Overall Results for sample 1 : VC 1

RNA Area:	397.4	RNA Integrity Number (RIN):	5.4 (B.02.08)
RNA Concentration:	3,119 pg/μl	Result Flagging Color:	
rRNA Ratio [28s / 18s]:	1.6	Result Flagging Label:	RIN: 5.40

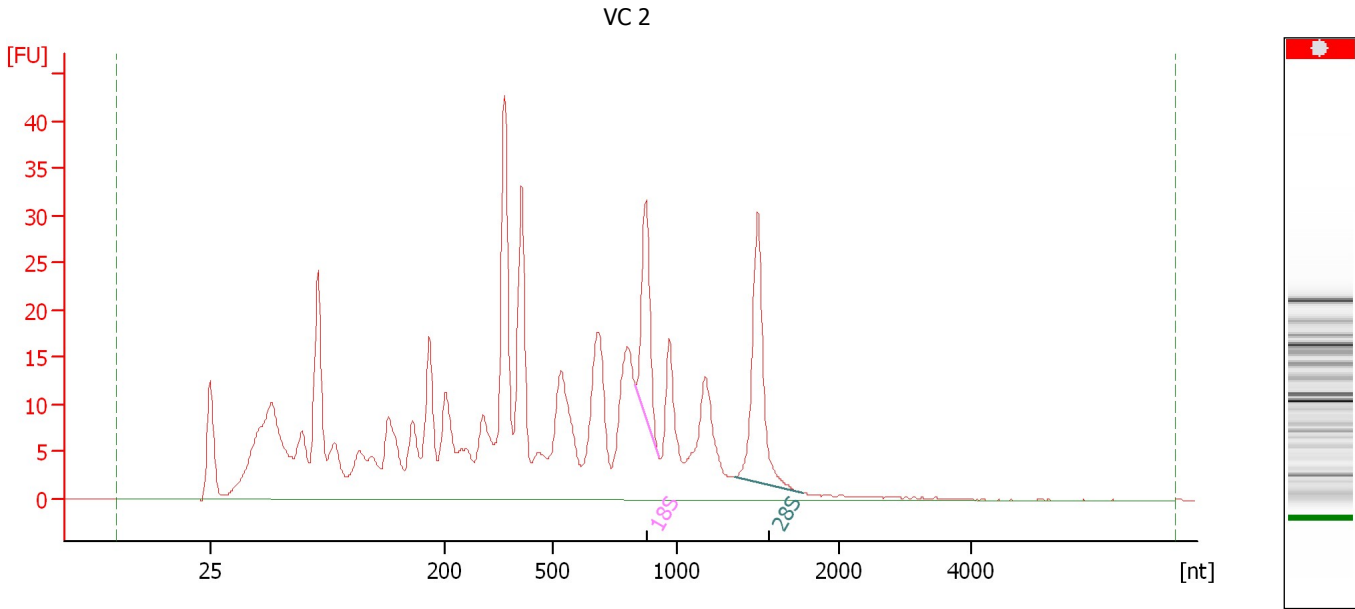
Fragment table for sample 1 : VC 1

Name	Start Size [nt]	End Size [nt]	Area	% of total Area
18S	828	923	15.2	3.8
28S	1,367	1,959	23.8	6.0

Assay Class: Eukaryote Total RNA Pico
 Data Path: C:\... bioanalyzer\2100 expert\data\2017-09-27\2017-09-27_002.xad

Created: 9/27/2017 2:27:58 PM
 Modified: 9/27/2017 2:40:53 PM

Electropherogram Summary Continued ...



Overall Results for sample 2 : VC 2

RNA Area:	576.0	RNA Integrity Number (RIN):	N/A (B.02.08)
RNA Concentration:	4,520 pg/μl	Result Flagging Color:	
rRNA Ratio [28s / 18s]:	1.5	Result Flagging Label:	RIN N/A

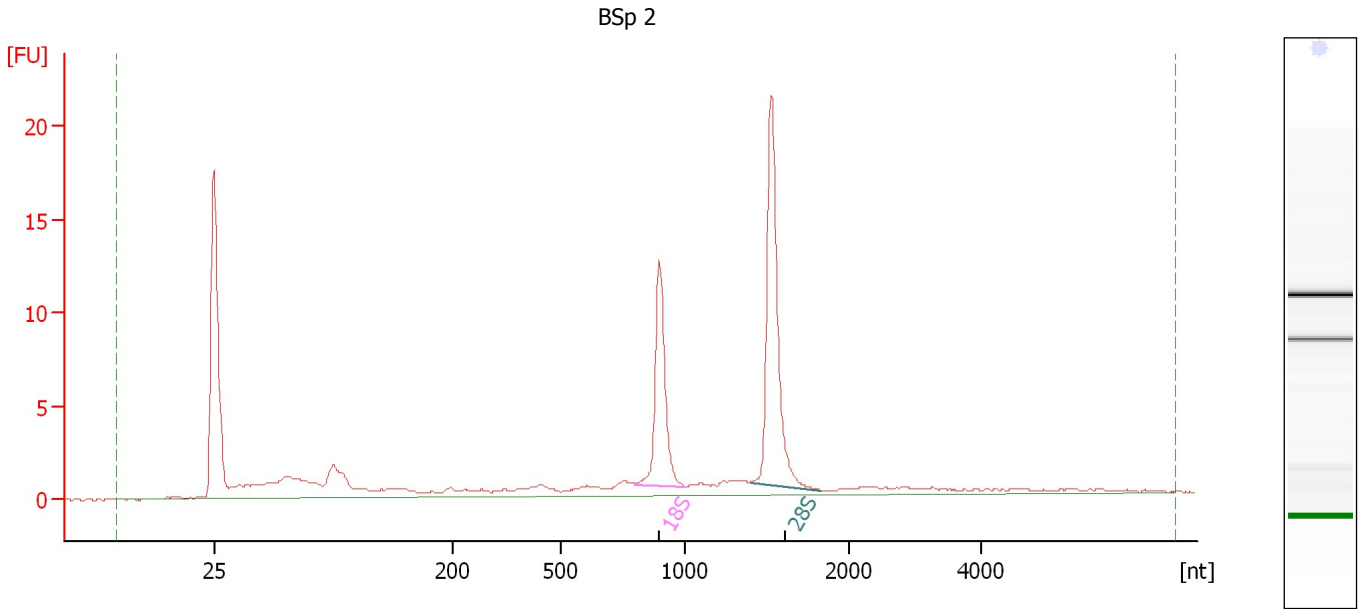
Fragment table for sample 2 : VC 2

Name	Start Size [nt]	End Size [nt]	Area	% of total Area
18S	830	925	22.3	3.9
28S	1,354	1,776	34.1	5.9

Assay Class: Eukaryote Total RNA Pico
 Data Path: C:\... bioanalyzer\2100 expert\data\2017-09-27\2017-09-27_002.xad

Created: 9/27/2017 2:27:58 PM
 Modified: 9/27/2017 2:40:53 PM

Electropherogram Summary Continued ...



Overall Results for sample 3 : BSp 2

RNA Area:	85.4	RNA Integrity Number (RIN):	9 (B.02.08)
RNA Concentration:	670 µg/µl	Result Flagging Color:	
rRNA Ratio [28s / 18s]:	1.7	Result Flagging Label:	RIN:9

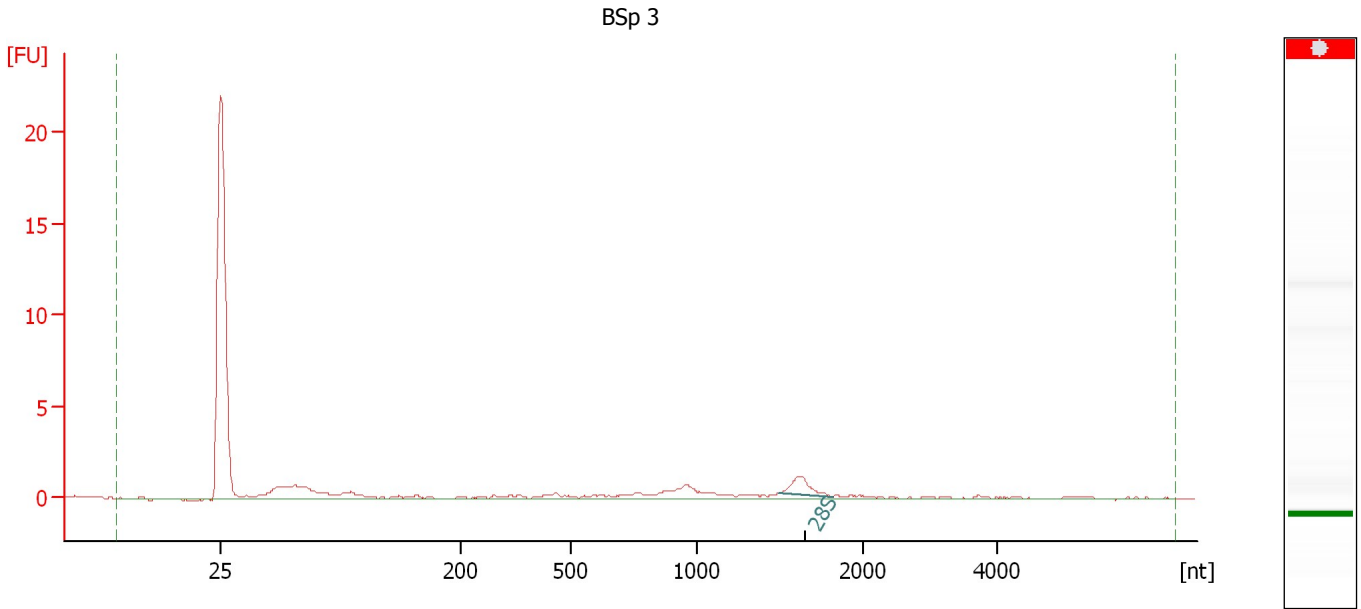
Fragment table for sample 3 : BSp 2

Name	Start Size [nt]	End Size [nt]	Area	% of total Area
18S	798	999	13.8	16.1
28S	1,405	1,831	23.0	27.0

Assay Class: Eukaryote Total RNA Pico
Data Path: C:\... bioanalyzer\2100 expert\data\2017-09-27\2017-09-27_002.xad

Created: 9/27/2017 2:27:58 PM
Modified: 9/27/2017 2:40:53 PM

Electropherogram Summary Continued ...



Overall Results for sample 4 : BSp 3

RNA Area:	18.6	RNA Integrity Number (RIN):	N/A (B.02.08)
RNA Concentration:	146 µg/µl	Result Flagging Color:	
rRNA Ratio [28s / 18s]:	0.0	Result Flagging Label:	RIN N/A

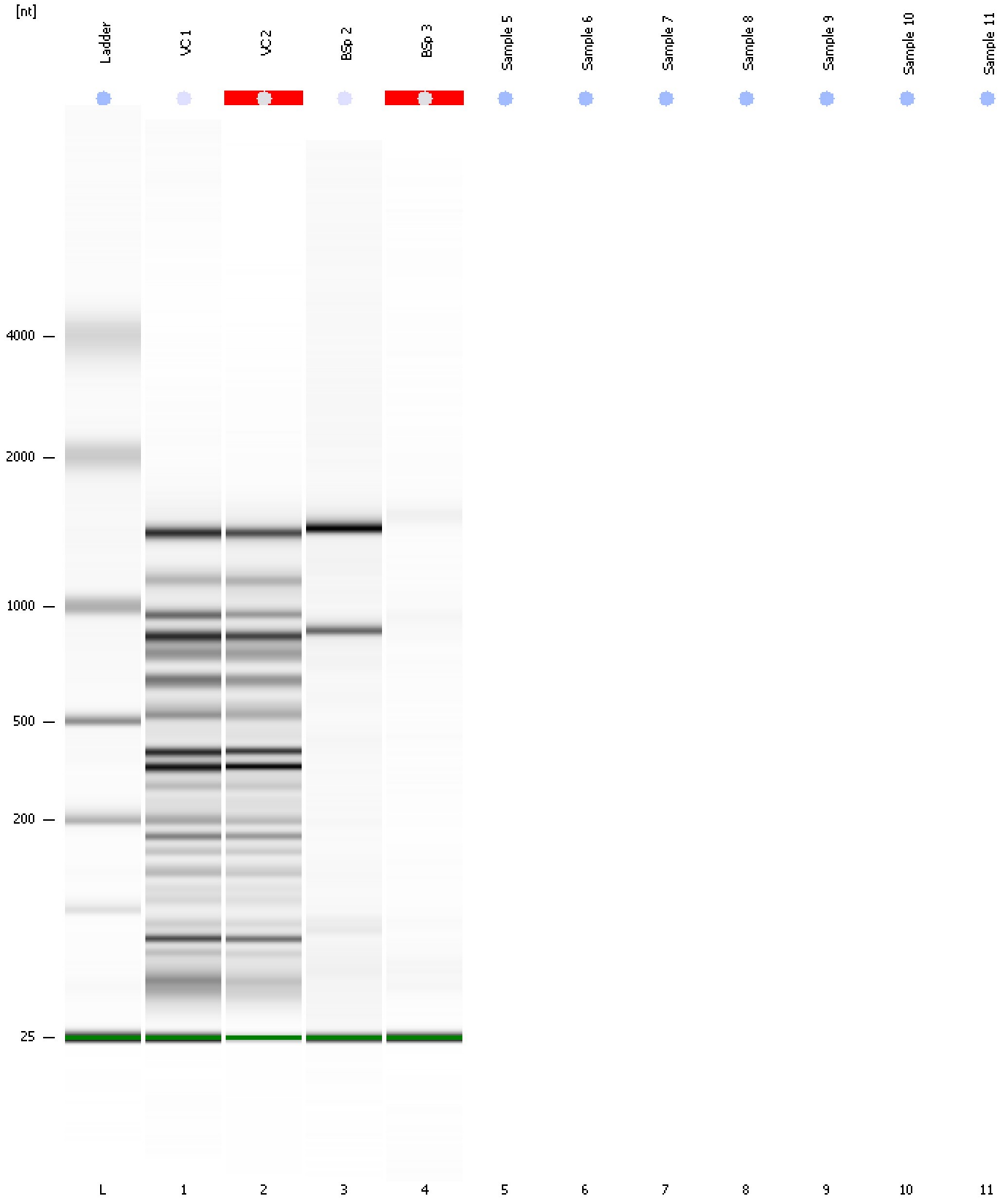
Fragment table for sample 4 : BSp 3

Name	Start Size [nt]	End Size [nt]	Area	% of total Area
28S	1,494	1,817	1.8	9.8

Assay Class: Eukaryote Total RNA Pico
Data Path: C:\... bioanalyzer\2100 expert\data\2017-09-27\2017-09-27_002.xad

Created: 9/27/2017 2:27:58 PM
Modified: 9/27/2017 2:40:53 PM

Gel Image



Assay Class: Eukaryote Total RNA Pico
Data Path: C:\... bioanalyzer\2100 expert\data\2017-09-27\2017-09-27_002.xad

Created: 9/27/2017 2:27:58 PM
Modified: 9/27/2017 2:40:53 PM

Invalid Samples

- Sample 5 has not been run, no results available.
- Sample 6 has not been run, no results available.
- Sample 7 has not been run, no results available.
- Sample 8 has not been run, no results available.
- Sample 9 has not been run, no results available.
- Sample 10 has not been run, no results available.
- Sample 11 has not been run, no results available.