

Assay Class: mRNA Pico  
Data Path: C:\... bioanalyzer\2100 expert\data\2017-10-13\2017-10-13\_001.xad

Created: 10/13/2017 10:23:32 AM  
Modified: 10/13/2017 10:49:27 AM

**Electrophoresis File Run Summary**

Instrument Information:

Instrument Name: DE13701086      Firmware: C.01.069  
Serial#: DE13701086      Type: G2938B

Assay Information:

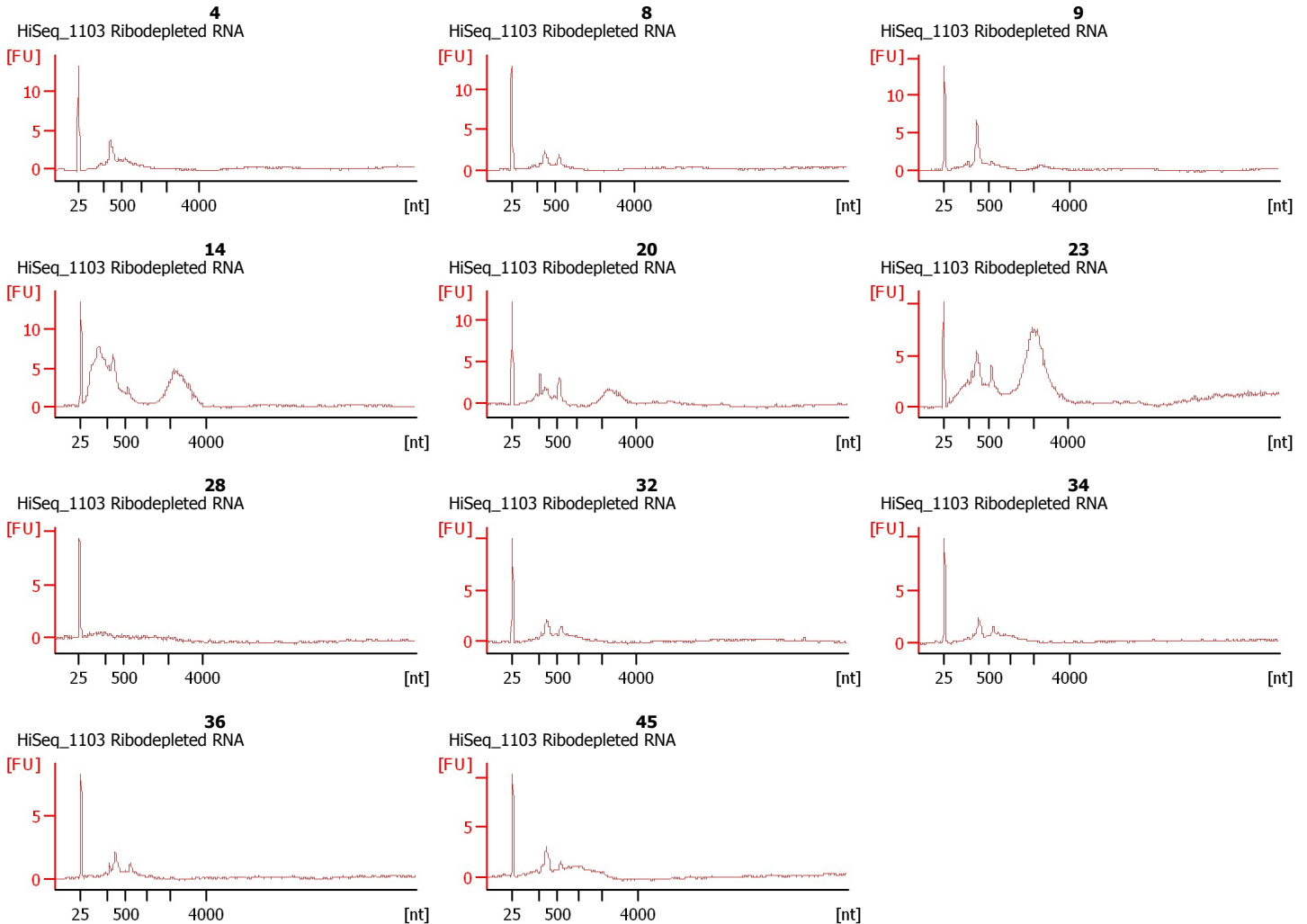
Assay Origin Path: C:\Program Files\Agilent\2100 bioanalyzer\2100 expert\assays\RNA\mRNA Pico Series II.xsy

Assay Class: mRNA Pico  
Version: 2.6  
Assay Comments: mRNA Analysis pg sensitivity

© Copyright 2003 - 2009 Agilent Technologies, Inc.

Chip Information:

Chip Lot #:  
Reagent Kit Lot #:  
Chip Comments:



Assay Class: mRNA Pico  
Data Path: C:\... bioanalyzer\2100 expert\data\2017-10-13\2017-10-13\_001.xad

Created: 10/13/2017 10:23:32 AM  
Modified: 10/13/2017 10:49:27 AM

**Electrophoresis File Run Summary (Chip Summary)**

Sample Name	Sample Comment	Status	Result Label	Result Color
4	HiSeq_1103 Ribodepleted RNA	✓		
8	HiSeq_1103 Ribodepleted RNA	✓		
9	HiSeq_1103 Ribodepleted RNA	✓		
14	HiSeq_1103 Ribodepleted RNA	✓		
20	HiSeq_1103 Ribodepleted RNA	✓		
23	HiSeq_1103 Ribodepleted RNA	✓		
28	HiSeq_1103 Ribodepleted RNA	✓		
32	HiSeq_1103 Ribodepleted RNA	✓		
34	HiSeq_1103 Ribodepleted RNA	✓		
36	HiSeq_1103 Ribodepleted RNA	✓		
45	HiSeq_1103 Ribodepleted RNA	✓		
Ladder		✓		

**Chip Lot #****Reagent Kit Lot #****Chip Comments :**

Assay Class: mRNA Pico  
Data Path: C:\... bioanalyzer\2100 expert\data\2017-10-13\2017-10-13\_001.xad

Created: 10/13/2017 10:23:32 AM  
Modified: 10/13/2017 10:49:27 AM

## Electrophoresis Assay Details

### General Analysis Settings

Number of Available Sample and Ladder Wells (Max.) : 12  
Minimum Visible Range [s] : 14  
Maximum Visible Range [s] : 85  
Start Analysis Time Range [s] : 15  
End Analysis Time Range [s] : 84  
Ladder Concentration [pg/ $\mu$ l] : 1000  
Lower Marker Concentration [pg/ $\mu$ l] : 0  
Upper Marker Concentration [pg/ $\mu$ l] : 0  
Used Lower Marker for Quantitation  
Standard Curve Fit is Logarithmic  
Show Data Aligned to Lower Marker

### Integrator Settings

Integration Start Time [s] : 15  
Integration End Time [s] : 84  
Slope Threshold : 0.2  
Height Threshold [FU] : 0.5  
Area Threshold : 0.1  
Width Threshold [s] : 0.2  
Baseline Plateau [s] : 0.5

### Filter Settings

Filter Width [s] : 0.5  
Polynomial Order : 4

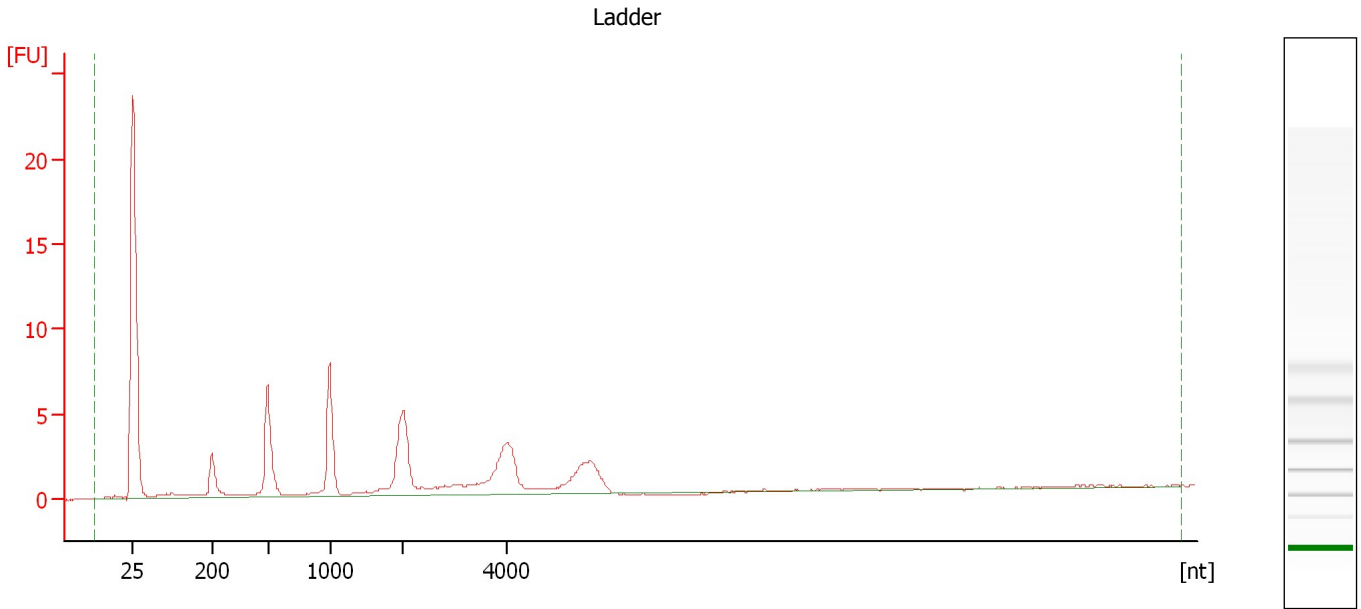
### Ladder

Ladder Peak	Size
1	25
2	200
3	500
4	1000
5	2000
6	4000

Assay Class: mRNA Pico  
Data Path: C:\... bioanalyzer\2100 expert\data\2017-10-13\2017-10-13\_001.xad

Created: 10/13/2017 10:23:32 AM  
Modified: 10/13/2017 10:49:27 AM

**Electropherogram Summary**



**Overall Results for Ladder**

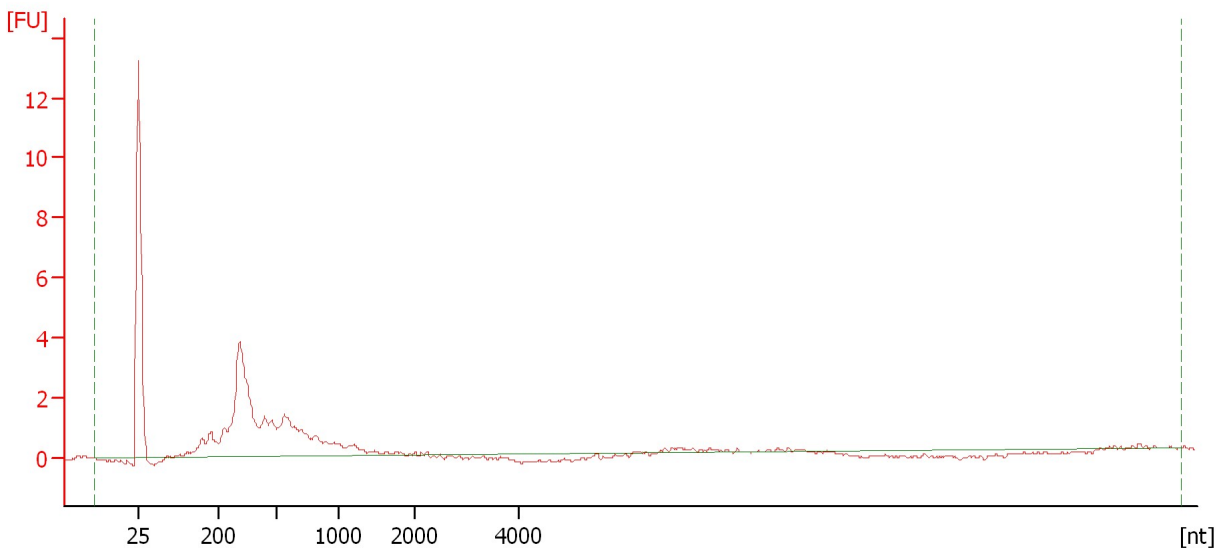
RNA Area: 69.3                      RNA Concentration: 1,000 pg/μl

Assay Class: mRNA Pico  
Data Path: C:\... bioanalyzer\2100 expert\data\2017-10-13\2017-10-13\_001.xad

Created: 10/13/2017 10:23:32 AM  
Modified: 10/13/2017 10:49:27 AM

**Electropherogram Summary Continued ...**

4 [ HiSeq\_1103 Ribodepleted RNA ]



**Overall Results for sample 1 : 4**

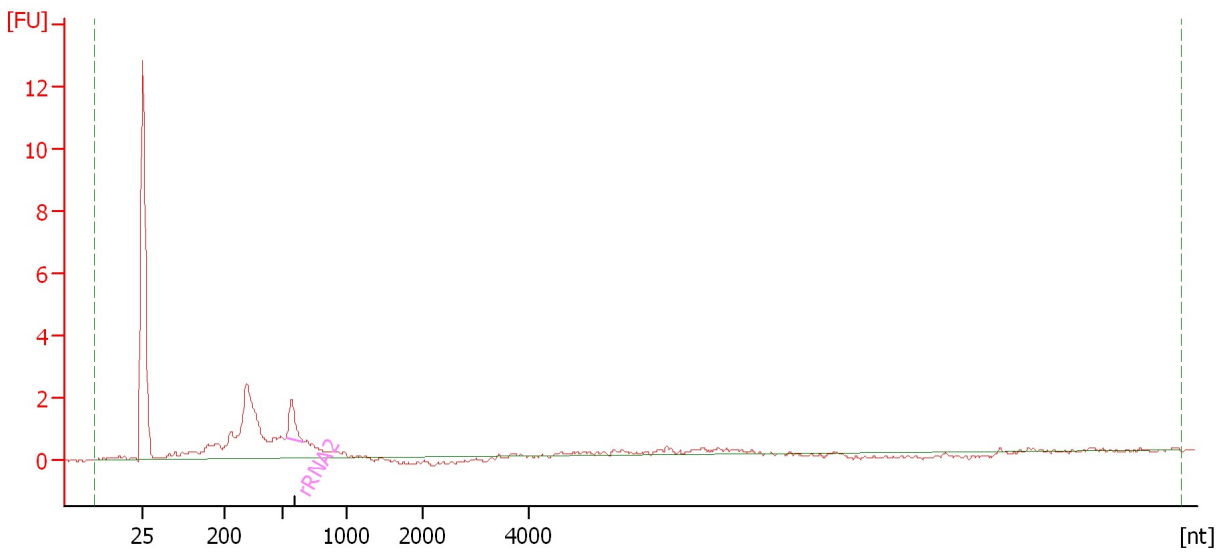
RNA Area:	40.7	rRNA Contamination:	0.0 %
RNA Concentration:	588 pg/μl		

Assay Class: mRNA Pico  
Data Path: C:\... bioanalyzer\2100 expert\data\2017-10-13\2017-10-13\_001.xad

Created: 10/13/2017 10:23:32 AM  
Modified: 10/13/2017 10:49:27 AM

**Electropherogram Summary Continued ...**

8 [ HiSeq\_1103 Ribodepleted RNA ]



**Overall Results for sample 2 : 8**

RNA Area: 32.0                      rRNA Contamination: 6.5 %  
RNA Concentration: 462 pg/μl

**Fragment table for sample 2 : 8**

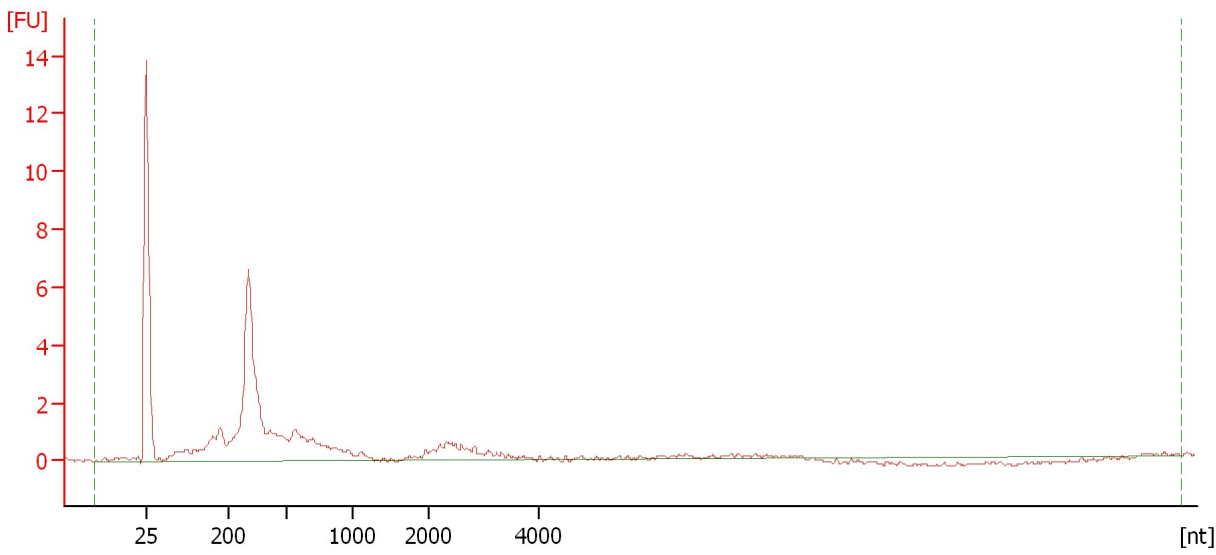
Name	Start Size [nt]	End Size [nt]	Area	% of total Area
rRNA2	533	670	2.1	6.5

Assay Class: mRNA Pico  
Data Path: C:\... bioanalyzer\2100 expert\data\2017-10-13\2017-10-13\_001.xad

Created: 10/13/2017 10:23:32 AM  
Modified: 10/13/2017 10:49:27 AM

**Electropherogram Summary Continued ...**

9 [ HiSeq\_1103 Ribodepleted RNA ]



**Overall Results for sample 3 : 9**

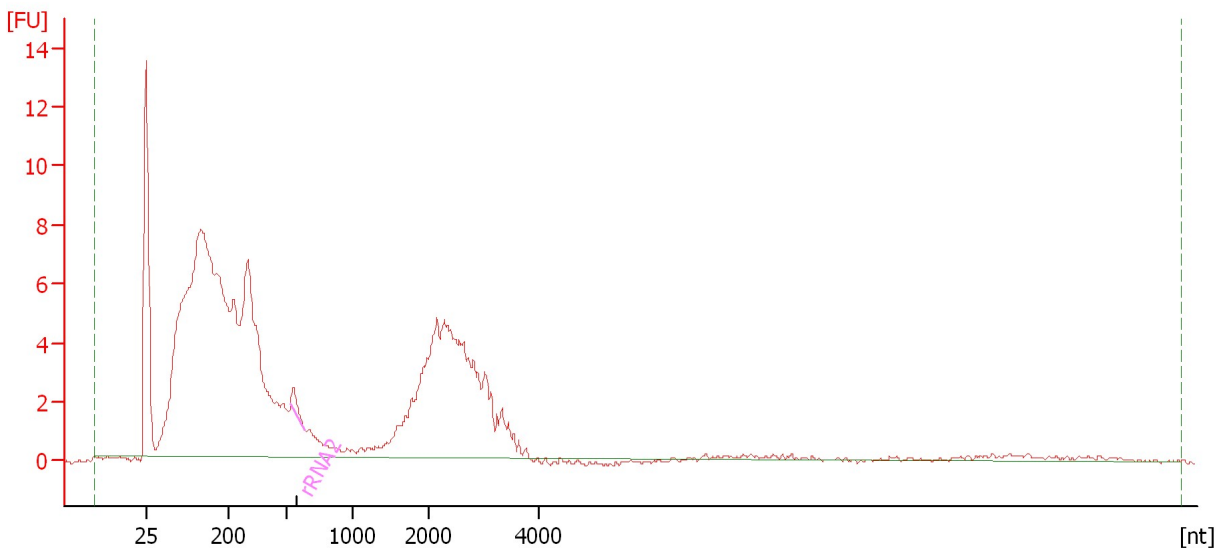
RNA Area:	49.4	rRNA Contamination:	0.0 %
RNA Concentration:	713 pg/μl		

Assay Class: mRNA Pico  
Data Path: C:\... bioanalyzer\2100 expert\data\2017-10-13\2017-10-13\_001.xad

Created: 10/13/2017 10:23:32 AM  
Modified: 10/13/2017 10:49:27 AM

**Electropherogram Summary Continued ...**

14 [ HiSeq\_1103 Ribodepleted RNA ]



**Overall Results for sample 4 : 14**

RNA Area: 222.4                      rRNA Contamination: 0.5 %  
RNA Concentration: 3,208 pg/μl

**Fragment table for sample 4 : 14**

Name	Start Size [nt]	End Size [nt]	Area	% of total Area
rRNA2	525	635	1.0	0.5

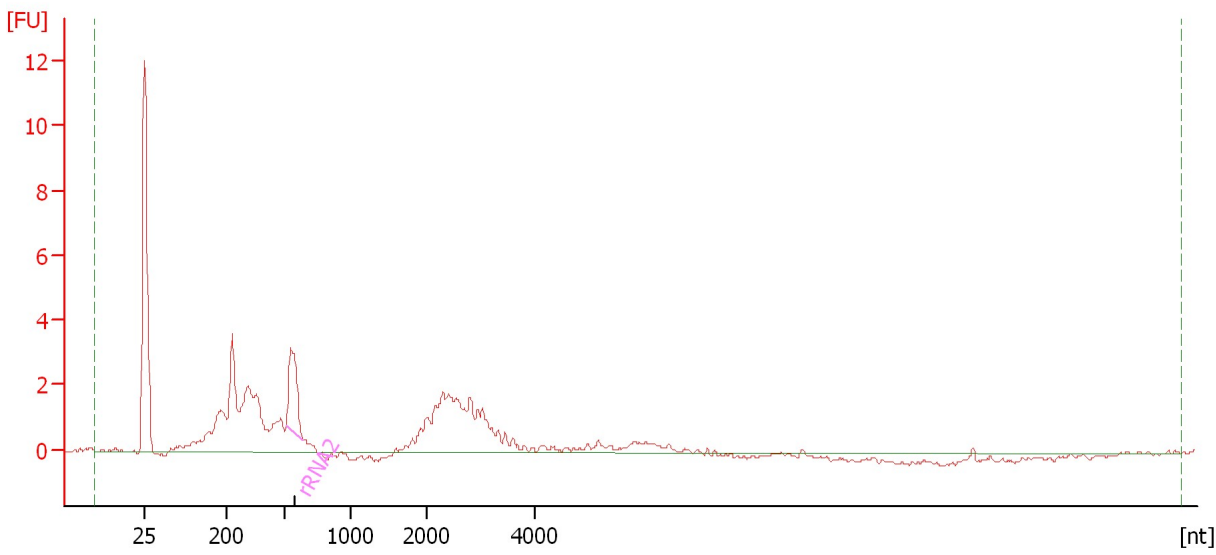


Assay Class: mRNA Pico  
Data Path: C:\... bioanalyzer\2100 expert\data\2017-10-13\2017-10-13\_001.xad

Created: 10/13/2017 10:23:32 AM  
Modified: 10/13/2017 10:49:27 AM

**Electropherogram Summary Continued ...**

20 [ HiSeq\_1103 Ribodepleted RNA ]



**Overall Results for sample 5 : 20**

RNA Area: 56.2                      rRNA Contamination: 9.6 %  
RNA Concentration: 811 pg/μl

**Fragment table for sample 5 : 20**

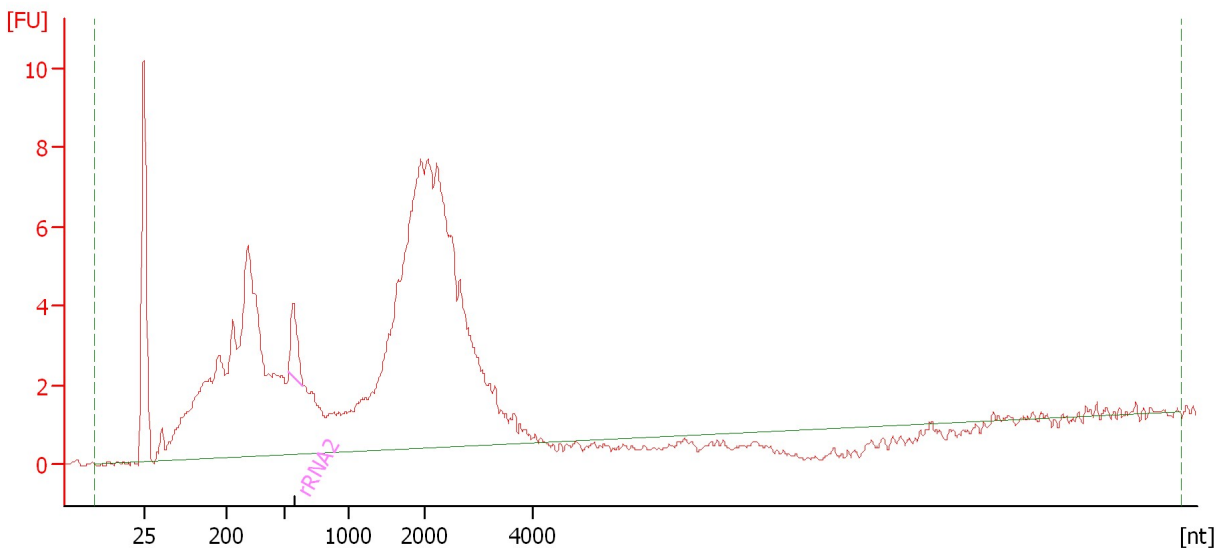
Name	Start Size [nt]	End Size [nt]	Area	% of total Area
rRNA2	506	636	5.4	9.6

Assay Class: mRNA Pico  
Data Path: C:\... bioanalyzer\2100 expert\data\2017-10-13\2017-10-13\_001.xad

Created: 10/13/2017 10:23:32 AM  
Modified: 10/13/2017 10:49:27 AM

**Electropherogram Summary Continued ...**

23 [ HiSeq\_1103 Ribodepleted RNA ]



**Overall Results for sample 6 : 23**

RNA Area: 186.3                      rRNA Contamination: 1.7 %  
RNA Concentration: 2,688 pg/μl

**Fragment table for sample 6 : 23**

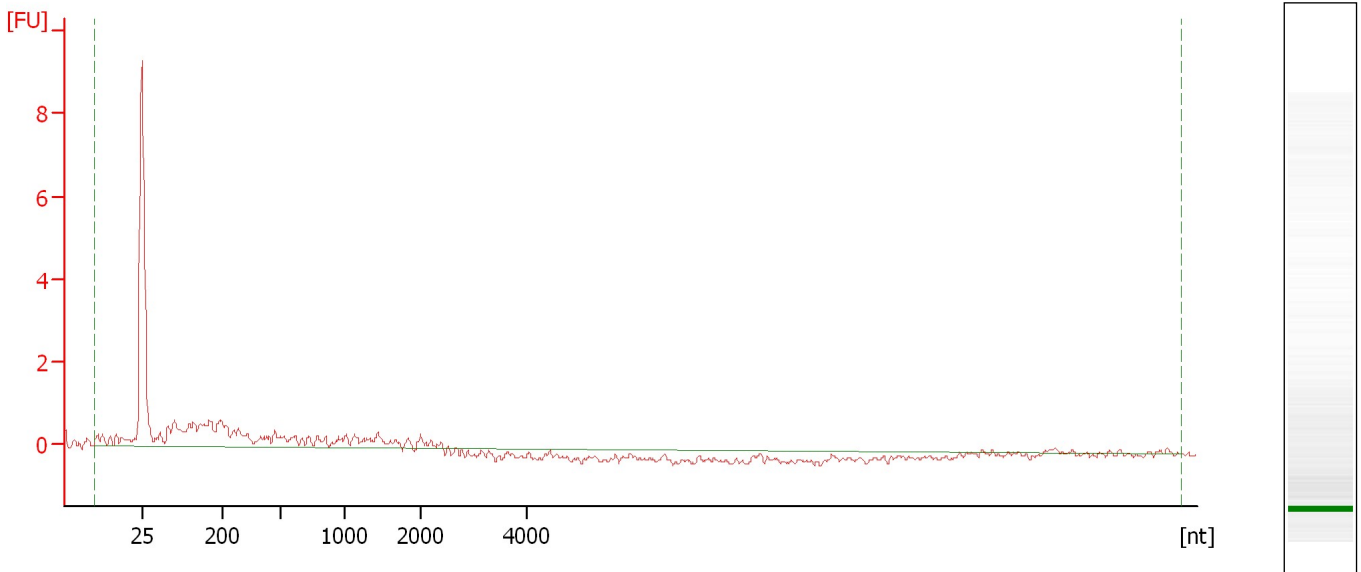
Name	Start Size [nt]	End Size [nt]	Area	% of total Area
rRNA2	534	651	3.2	1.7

Assay Class: mRNA Pico  
Data Path: C:\... bioanalyzer\2100 expert\data\2017-10-13\2017-10-13\_001.xad

Created: 10/13/2017 10:23:32 AM  
Modified: 10/13/2017 10:49:27 AM

**Electropherogram Summary Continued ...**

28 [ HiSeq\_1103 Ribodepleted RNA ]



**Overall Results for sample 7 : 28**

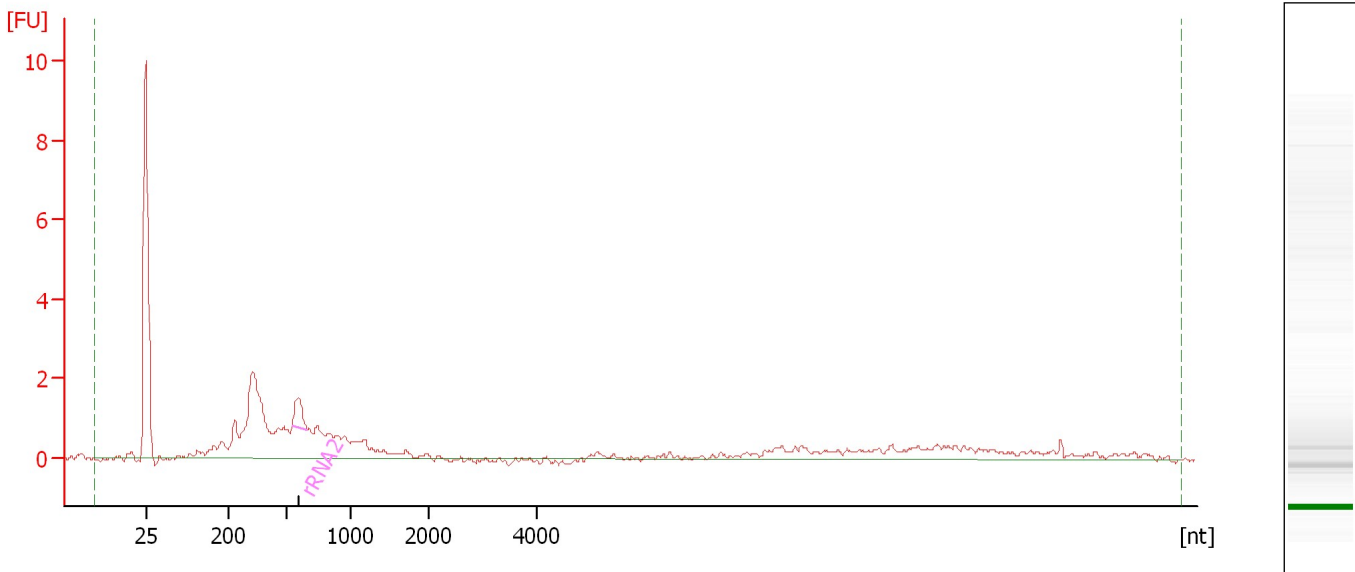
RNA Area:	19.2	rRNA Contamination:	0.0 %
RNA Concentration:	277 pg/μl		

Assay Class: mRNA Pico  
Data Path: C:\... bioanalyzer\2100 expert\data\2017-10-13\2017-10-13\_001.xad

Created: 10/13/2017 10:23:32 AM  
Modified: 10/13/2017 10:49:27 AM

**Electropherogram Summary Continued ...**

32 [ HiSeq\_1103 Ribodepleted RNA ]



**Overall Results for sample 8 : 32**

RNA Area: 37.9                      rRNA Contamination: 3.8 %  
RNA Concentration: 546 pg/μl

**Fragment table for sample 8 : 32**

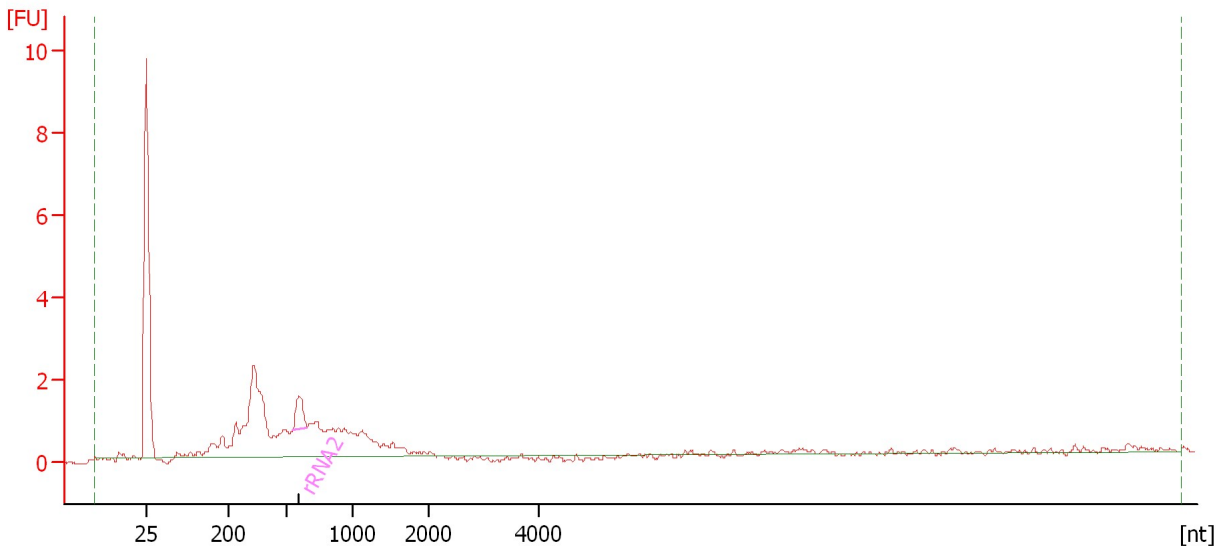
Name	Start Size [nt]	End Size [nt]	Area	% of total Area
rRNA2	546	663	1.4	3.8

Assay Class: mRNA Pico  
Data Path: C:\... bioanalyzer\2100 expert\data\2017-10-13\2017-10-13\_001.xad

Created: 10/13/2017 10:23:32 AM  
Modified: 10/13/2017 10:49:27 AM

**Electropherogram Summary Continued ...**

34 [ HiSeq\_1103 Ribodepleted RNA ]



**Overall Results for sample 9 : 34**

RNA Area: 32.9                      rRNA Contamination: 4.2 %  
RNA Concentration: 474 pg/μl

**Fragment table for sample 9 : 34**

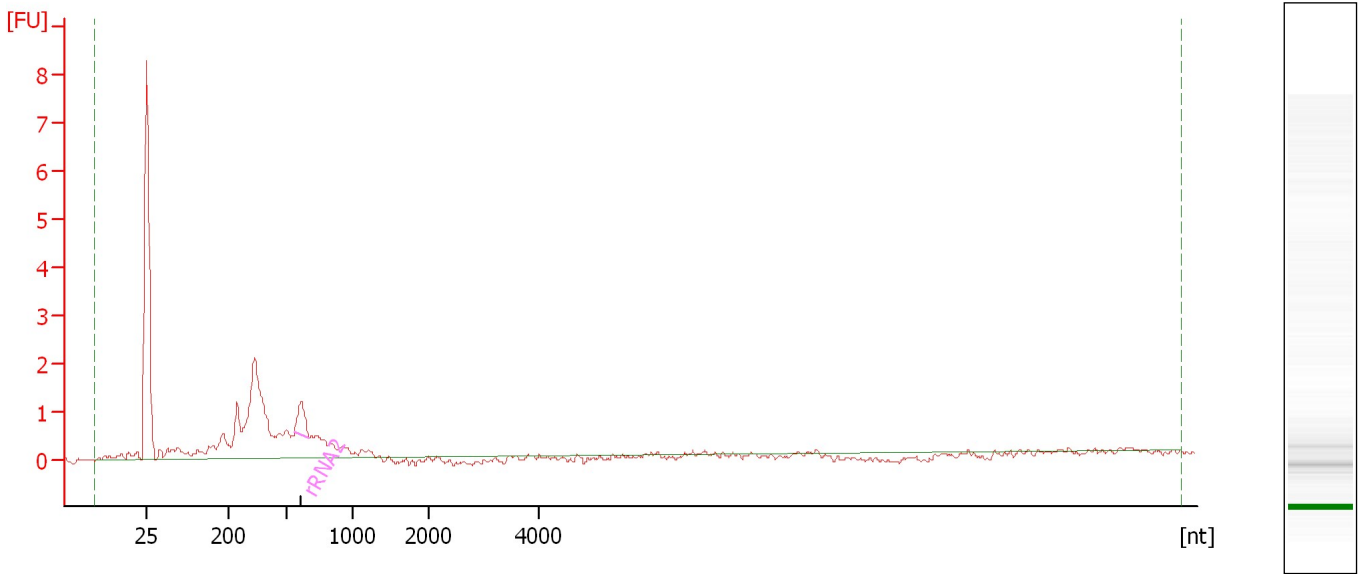
Name	Start Size [nt]	End Size [nt]	Area	% of total Area
rRNA2	543	648	1.4	4.2

Assay Class: mRNA Pico  
Data Path: C:\... bioanalyzer\2100 expert\data\2017-10-13\2017-10-13\_001.xad

Created: 10/13/2017 10:23:32 AM  
Modified: 10/13/2017 10:49:27 AM

**Electropherogram Summary Continued ...**

36 [ HiSeq\_1103 Ribodepleted RNA ]



**Overall Results for sample 10 : 36**

RNA Area: 24.7                      rRNA Contamination: 4.9 %  
RNA Concentration: 356 pg/μl

**Fragment table for sample 10 : 36**

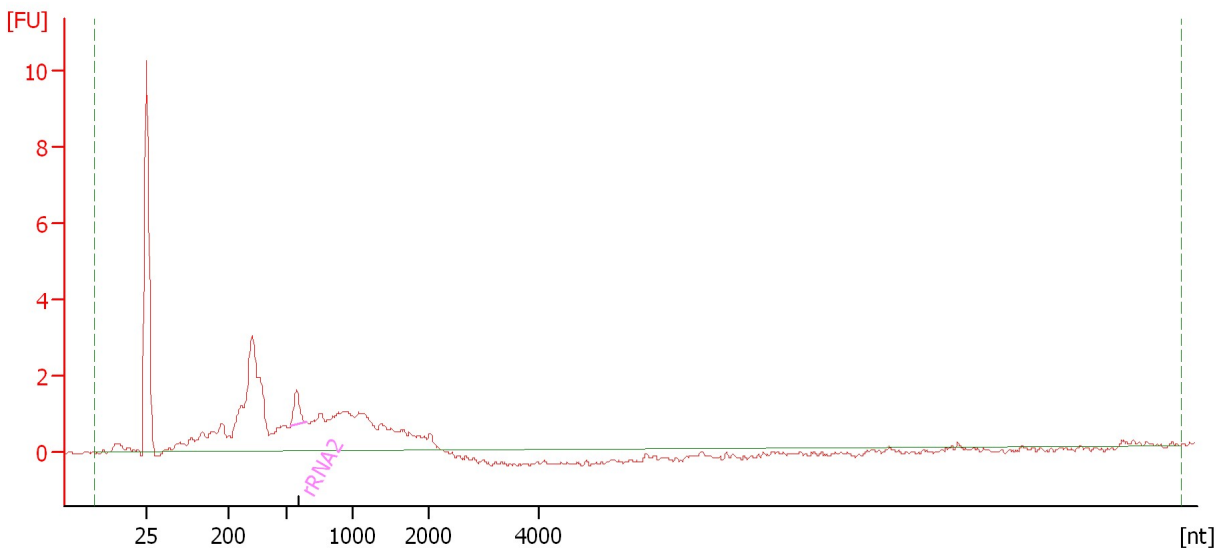
Name	Start Size [nt]	End Size [nt]	Area	% of total Area
rRNA2	556	666	1.2	4.9

Assay Class: mRNA Pico  
Data Path: C:\... bioanalyzer\2100 expert\data\2017-10-13\2017-10-13\_001.xad

Created: 10/13/2017 10:23:32 AM  
Modified: 10/13/2017 10:49:27 AM

**Electropherogram Summary Continued ...**

45 [ HiSeq\_1103 Ribodepleted RNA ]



**Overall Results for sample 11 : 45**

RNA Area: 45.3                      rRNA Contamination: 2.9 %  
RNA Concentration: 654 pg/μl

**Fragment table for sample 11 : 45**

Name	Start Size [nt]	End Size [nt]	Area	% of total Area
rRNA2	525	648	1.3	2.9

Assay Class: mRNA Pico  
Data Path: C:\... bioanalyzer\2100 expert\data\2017-10-13\2017-10-13\_001.xad

Created: 10/13/2017 10:23:32 AM  
Modified: 10/13/2017 10:49:27 AM

**Gel Image**