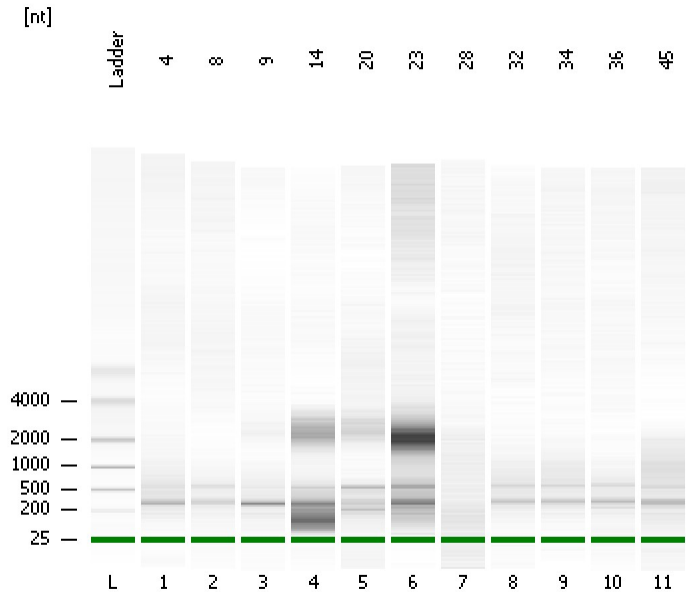


Assay Class: mRNA Pico
Data Path: C:\... bioanalyzer\2100 expert\data\2017-10-13\2017-10-13_001.xad

Created: 10/13/2017 10:23:32 AM
Modified: 10/13/2017 10:49:27 AM

Electrophoresis File Run Summary



Instrument Information:

Instrument Name: DE13701086 Firmware: C.01.069
Serial#: DE13701086 Type: G2938B

Assay Information:

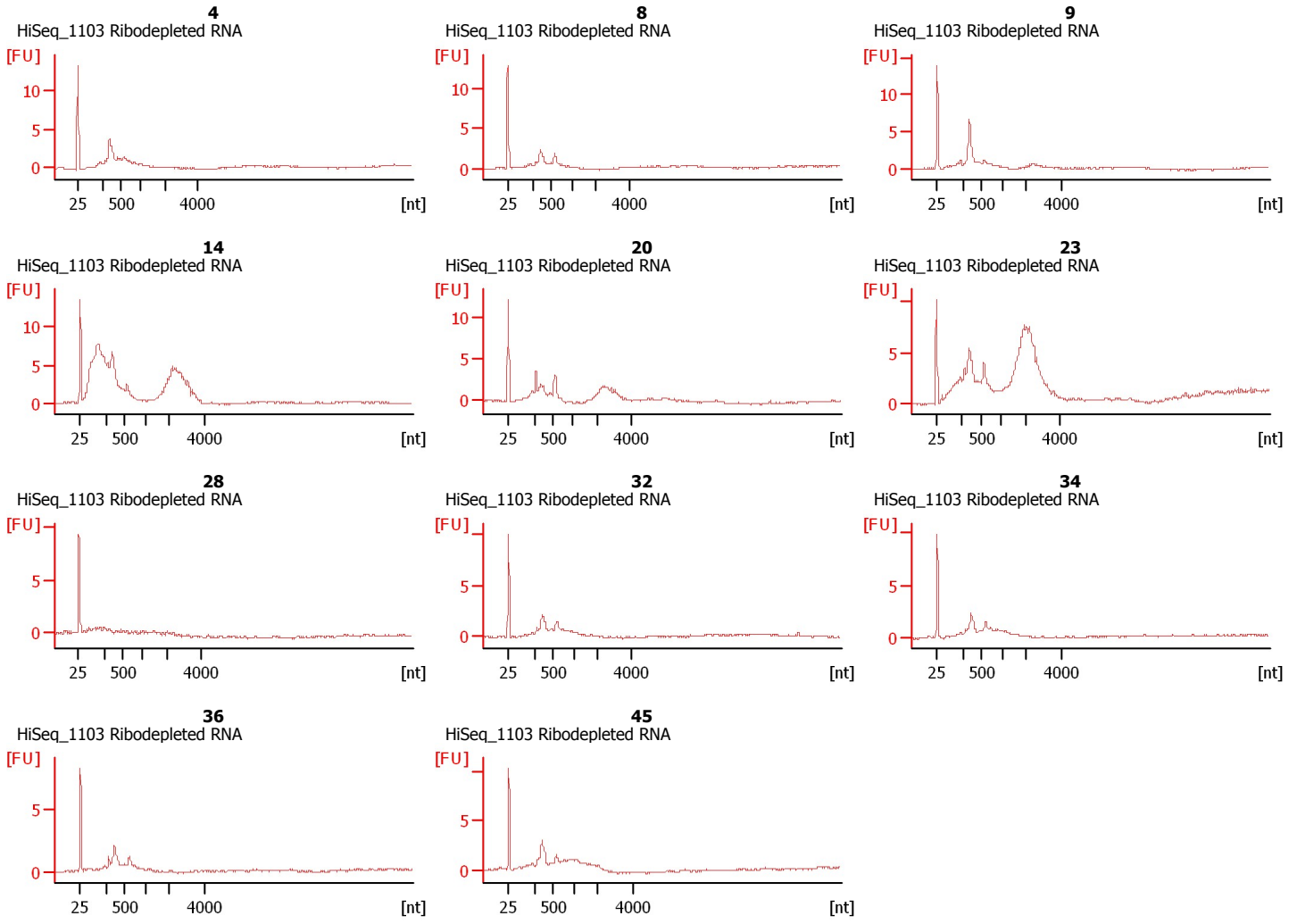
Assay Origin Path: C:\Program Files\Agilent\2100 bioanalyzer\2100 expert\assays\RNA\mRNA Pico Series II.xsy

Assay Class: mRNA Pico
Version: 2.6
Assay Comments: mRNA Analysis pg sensitivity

© Copyright 2003 - 2009 Agilent Technologies, Inc.

Chip Information:

Chip Lot #:
Reagent Kit Lot #:
Chip Comments:



Assay Class: mRNA Pico
Data Path: C:\... bioanalyzer\2100 expert\data\2017-10-13\2017-10-13_001.xad

Created: 10/13/2017 10:23:32 AM
Modified: 10/13/2017 10:49:27 AM

Electrophoresis File Run Summary (Chip Summary)

Sample Name	Sample Comment	Status	Result Label	Result Color
4	HiSeq_1103 Ribodepleted RNA	✓		
8	HiSeq_1103 Ribodepleted RNA	✓		
9	HiSeq_1103 Ribodepleted RNA	✓		
14	HiSeq_1103 Ribodepleted RNA	✓		
20	HiSeq_1103 Ribodepleted RNA	✓		
23	HiSeq_1103 Ribodepleted RNA	✓		
28	HiSeq_1103 Ribodepleted RNA	✓		
32	HiSeq_1103 Ribodepleted RNA	✓		
34	HiSeq_1103 Ribodepleted RNA	✓		
36	HiSeq_1103 Ribodepleted RNA	✓		
45	HiSeq_1103 Ribodepleted RNA	✓		
Ladder		✓		

Chip Lot #**Reagent Kit Lot #****Chip Comments :**

Assay Class: mRNA Pico
Data Path: C:\... bioanalyzer\2100 expert\data\2017-10-13\2017-10-13_001.xad

Created: 10/13/2017 10:23:32 AM
Modified: 10/13/2017 10:49:27 AM

Electrophoresis Assay Details

General Analysis Settings

Number of Available Sample and Ladder Wells (Max.) : 12
Minimum Visible Range [s] : 14
Maximum Visible Range [s] : 85
Start Analysis Time Range [s] : 15
End Analysis Time Range [s] : 84
Ladder Concentration [pg/ μ l] : 1000
Lower Marker Concentration [pg/ μ l] : 0
Upper Marker Concentration [pg/ μ l] : 0
Used Lower Marker for Quantitation
Standard Curve Fit is Logarithmic
Show Data Aligned to Lower Marker

Integrator Settings

Integration Start Time [s] : 15
Integration End Time [s] : 84
Slope Threshold : 0.2
Height Threshold [FU] : 0.5
Area Threshold : 0.1
Width Threshold [s] : 0.2
Baseline Plateau [s] : 0.5

Filter Settings

Filter Width [s] : 0.5
Polynomial Order : 4

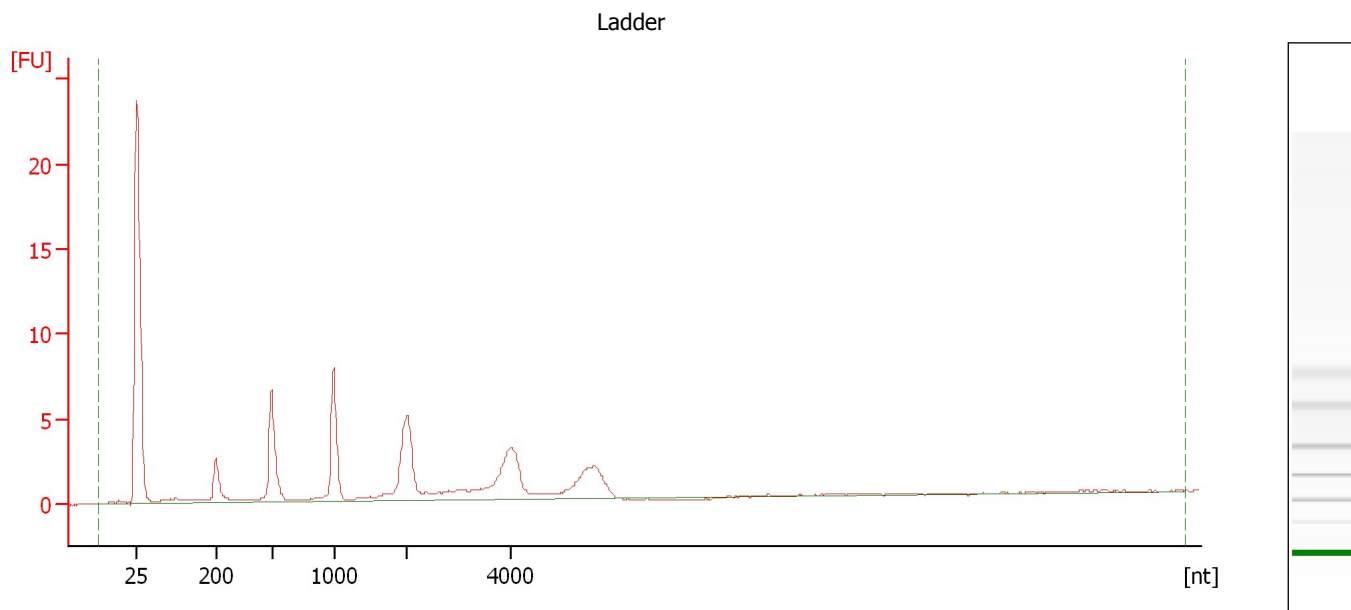
Ladder

Ladder Peak	Size
1	25
2	200
3	500
4	1000
5	2000
6	4000

Assay Class: mRNA Pico
Data Path: C:\... bioanalyzer\2100 expert\data\2017-10-13\2017-10-13_001.xad

Created: 10/13/2017 10:23:32 AM
Modified: 10/13/2017 10:49:27 AM

Electropherogram Summary



Overall Results for Ladder

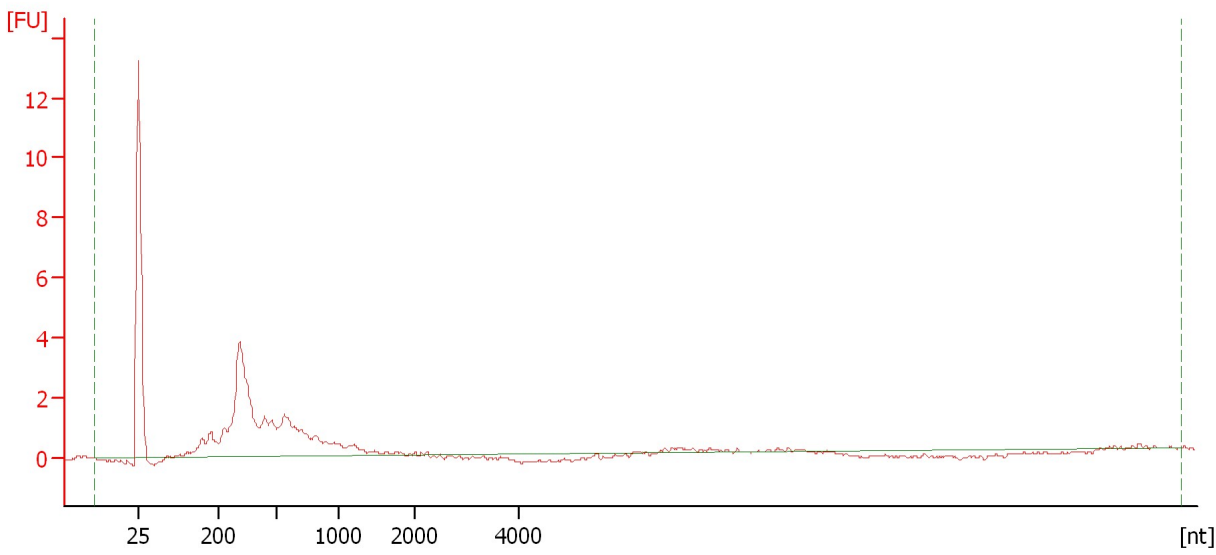
RNA Area: 69.3 RNA Concentration: 1,000 pg/μl

Assay Class: mRNA Pico
Data Path: C:\... bioanalyzer\2100 expert\data\2017-10-13\2017-10-13_001.xad

Created: 10/13/2017 10:23:32 AM
Modified: 10/13/2017 10:49:27 AM

Electropherogram Summary Continued ...

4 [HiSeq_1103 Ribodepleted RNA]



Overall Results for sample 1 : 4

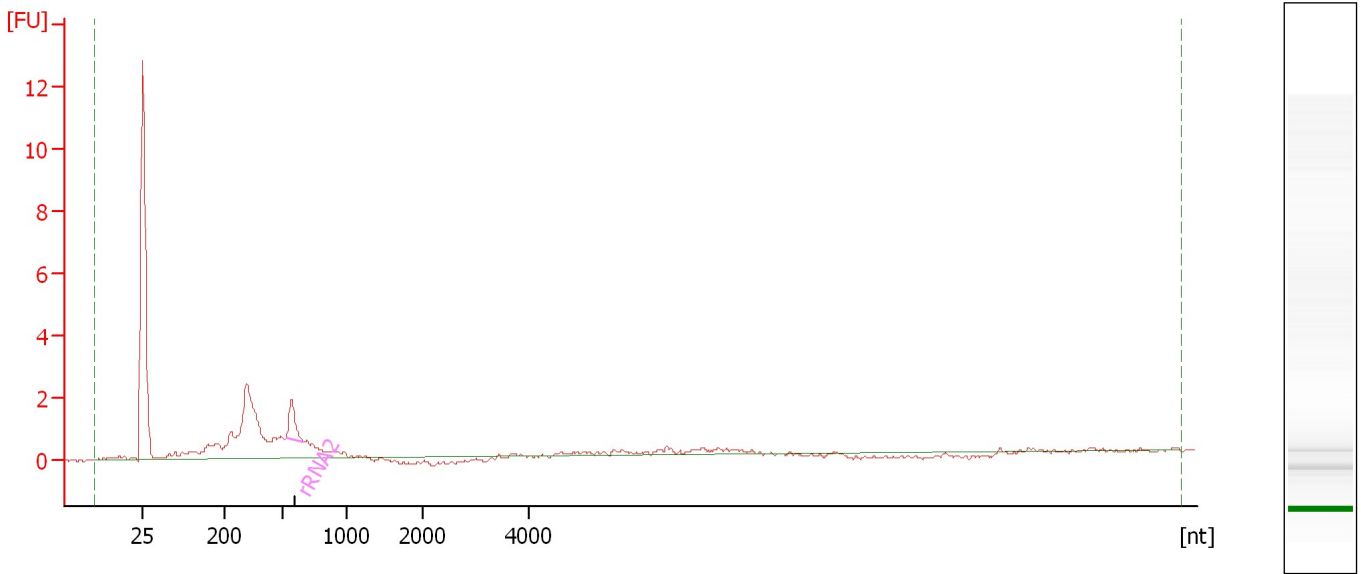
RNA Area:	40.7	rRNA Contamination:	0.0 %
RNA Concentration:	588 pg/μl		

Assay Class: mRNA Pico
Data Path: C:\... bioanalyzer\2100 expert\data\2017-10-13\2017-10-13_001.xad

Created: 10/13/2017 10:23:32 AM
Modified: 10/13/2017 10:49:27 AM

Electropherogram Summary Continued ...

8 [HiSeq_1103 Ribodepleted RNA]



Overall Results for sample 2 : 8

RNA Area: 32.0 rRNA Contamination: 6.5 %
RNA Concentration: 462 pg/μl

Fragment table for sample 2 : 8

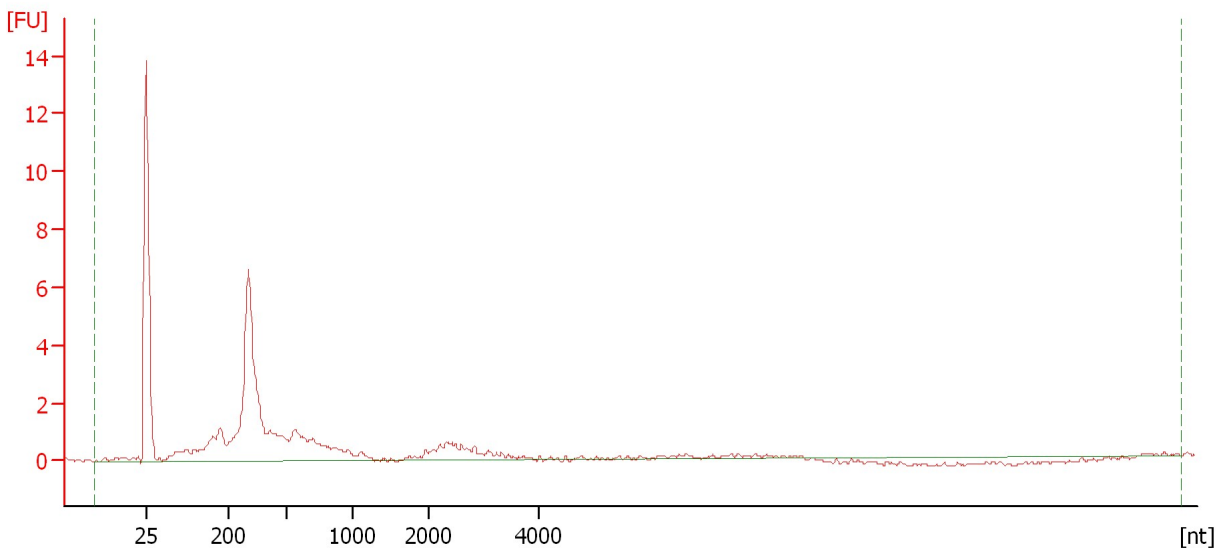
Name	Start Size [nt]	End Size [nt]	Area	% of total Area
rRNA2	533	670	2.1	6.5

Assay Class: mRNA Pico
Data Path: C:\... bioanalyzer\2100 expert\data\2017-10-13\2017-10-13_001.xad

Created: 10/13/2017 10:23:32 AM
Modified: 10/13/2017 10:49:27 AM

Electropherogram Summary Continued ...

9 [HiSeq_1103 Ribodepleted RNA]



Overall Results for sample 3 : 9

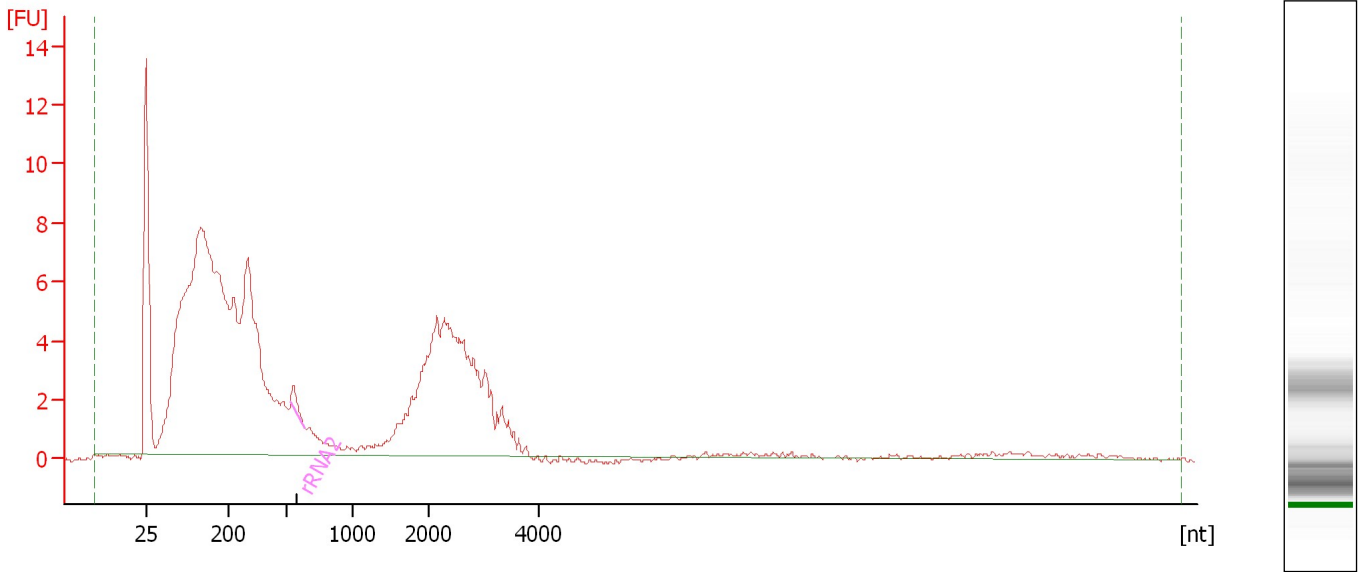
RNA Area:	49.4	rRNA Contamination:	0.0 %
RNA Concentration:	713 pg/μl		

Assay Class: mRNA Pico
Data Path: C:\... bioanalyzer\2100 expert\data\2017-10-13\2017-10-13_001.xad

Created: 10/13/2017 10:23:32 AM
Modified: 10/13/2017 10:49:27 AM

Electropherogram Summary Continued ...

14 [HiSeq_1103 Ribodepleted RNA]



Overall Results for sample 4 : 14

RNA Area: 222.4 rRNA Contamination: 0.5 %
RNA Concentration: 3,208 pg/μl

Fragment table for sample 4 : 14

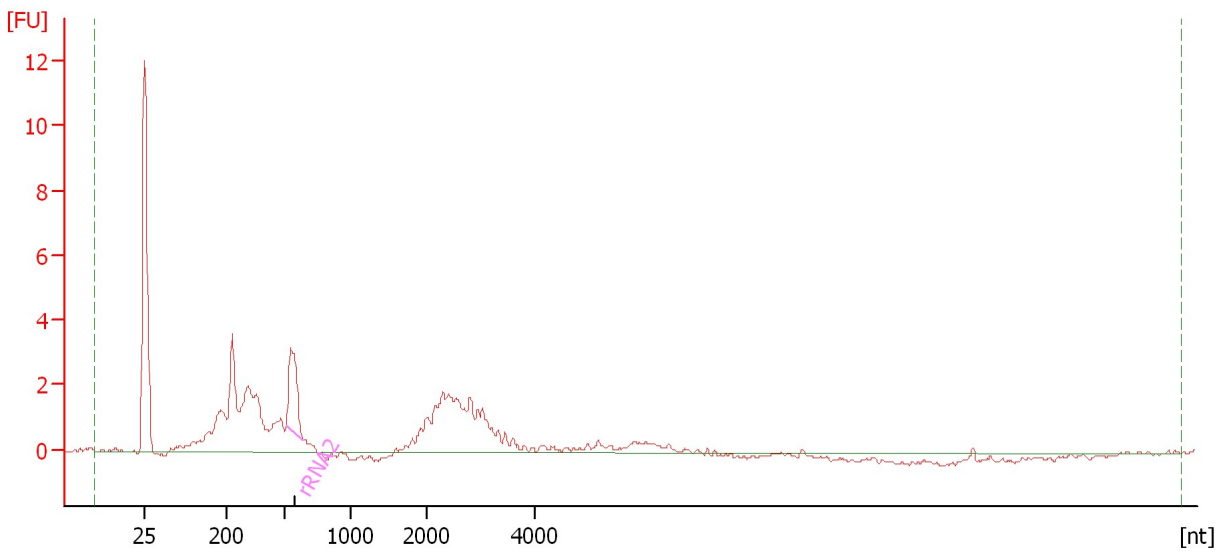
Name	Start Size [nt]	End Size [nt]	Area	% of total Area
rRNA2	525	635	1.0	0.5

Assay Class: mRNA Pico
Data Path: C:\... bioanalyzer\2100 expert\data\2017-10-13\2017-10-13_001.xad

Created: 10/13/2017 10:23:32 AM
Modified: 10/13/2017 10:49:27 AM

Electropherogram Summary Continued ...

20 [HiSeq_1103 Ribodepleted RNA]



Overall Results for sample 5 : 20

RNA Area: 56.2 rRNA Contamination: 9.6 %
RNA Concentration: 811 pg/μl

Fragment table for sample 5 : 20

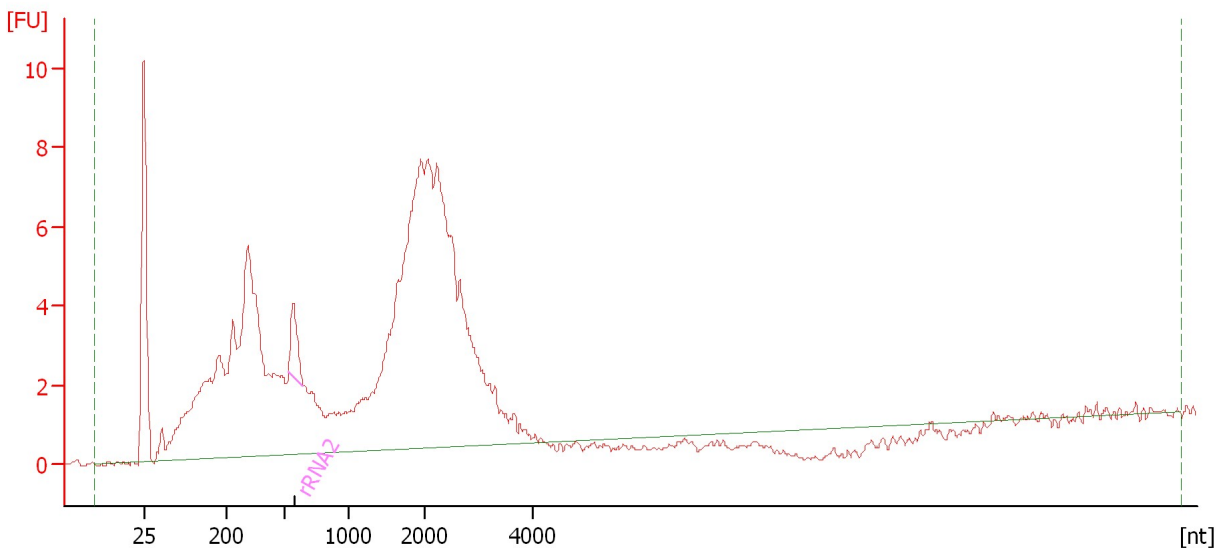
Name	Start Size [nt]	End Size [nt]	Area	% of total Area
rRNA2	506	636	5.4	9.6

Assay Class: mRNA Pico
Data Path: C:\... bioanalyzer\2100 expert\data\2017-10-13\2017-10-13_001.xad

Created: 10/13/2017 10:23:32 AM
Modified: 10/13/2017 10:49:27 AM

Electropherogram Summary Continued ...

23 [HiSeq_1103 Ribodepleted RNA]



Overall Results for sample 6 : 23

RNA Area: 186.3 rRNA Contamination: 1.7 %
RNA Concentration: 2,688 pg/μl

Fragment table for sample 6 : 23

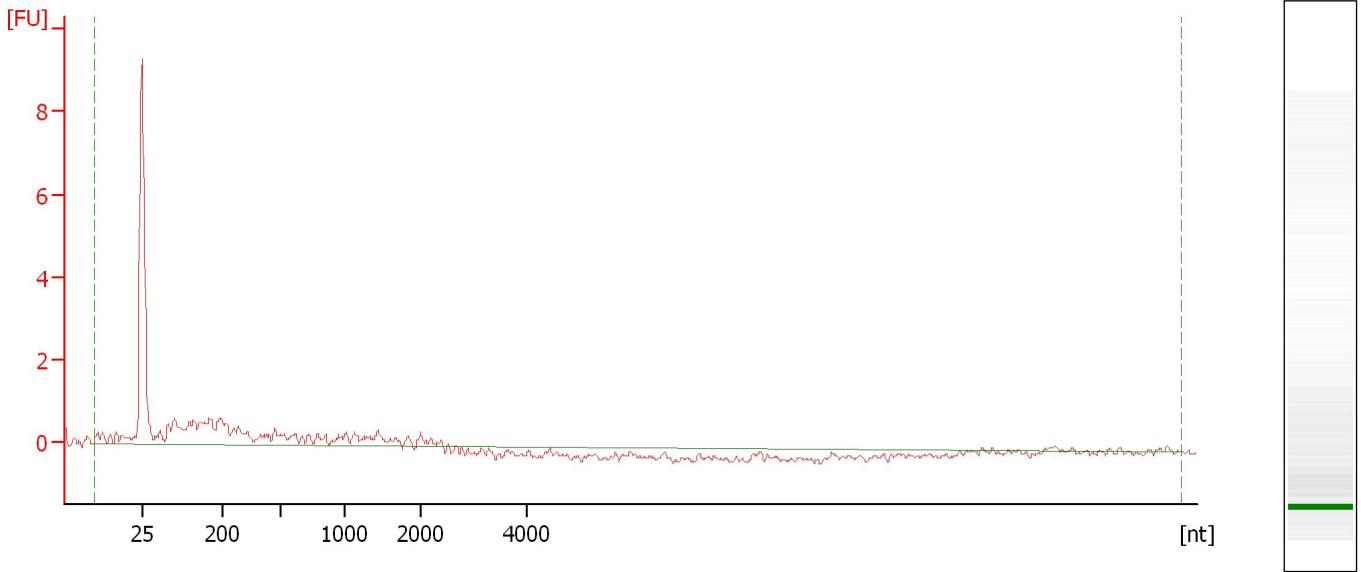
Name	Start Size [nt]	End Size [nt]	Area	% of total Area
rRNA2	534	651	3.2	1.7

Assay Class: mRNA Pico
Data Path: C:\... bioanalyzer\2100 expert\data\2017-10-13\2017-10-13_001.xad

Created: 10/13/2017 10:23:32 AM
Modified: 10/13/2017 10:49:27 AM

Electropherogram Summary Continued ...

28 [HiSeq_1103 Ribodepleted RNA]



Overall Results for sample 7 : 28

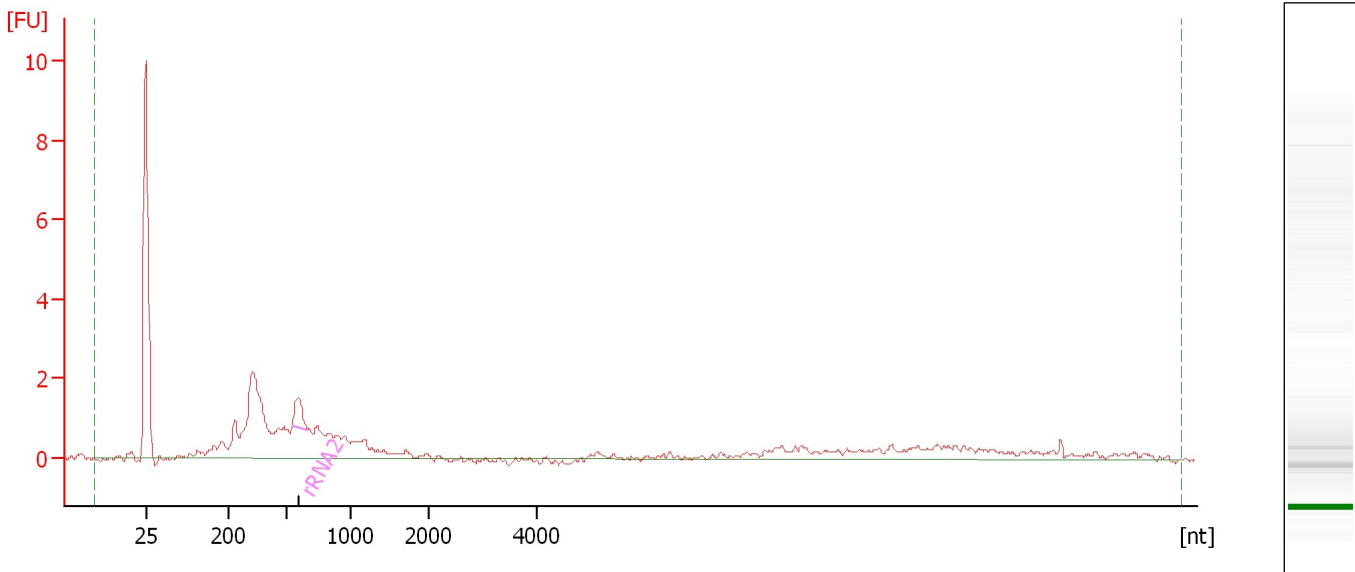
RNA Area:	19.2	rRNA Contamination:	0.0 %
RNA Concentration:	277 pg/μl		

Assay Class: mRNA Pico
Data Path: C:\... bioanalyzer\2100 expert\data\2017-10-13\2017-10-13_001.xad

Created: 10/13/2017 10:23:32 AM
Modified: 10/13/2017 10:49:27 AM

Electropherogram Summary Continued ...

32 [HiSeq_1103 Ribodepleted RNA]



Overall Results for sample 8 : 32

RNA Area: 37.9 rRNA Contamination: 3.8 %
RNA Concentration: 546 pg/μl

Fragment table for sample 8 : 32

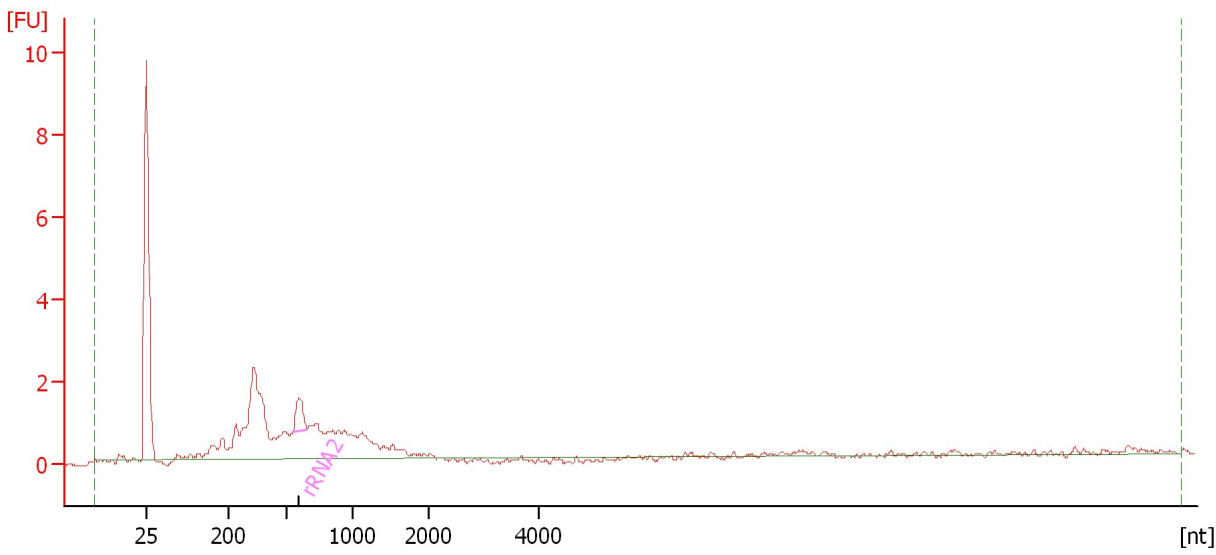
Name	Start Size [nt]	End Size [nt]	Area	% of total Area
rRNA2	546	663	1.4	3.8

Assay Class: mRNA Pico
Data Path: C:\... bioanalyzer\2100 expert\data\2017-10-13\2017-10-13_001.xad

Created: 10/13/2017 10:23:32 AM
Modified: 10/13/2017 10:49:27 AM

Electropherogram Summary Continued ...

34 [HiSeq_1103 Ribodepleted RNA]



Overall Results for sample 9 : 34

RNA Area: 32.9 rRNA Contamination: 4.2 %
RNA Concentration: 474 pg/μl

Fragment table for sample 9 : 34

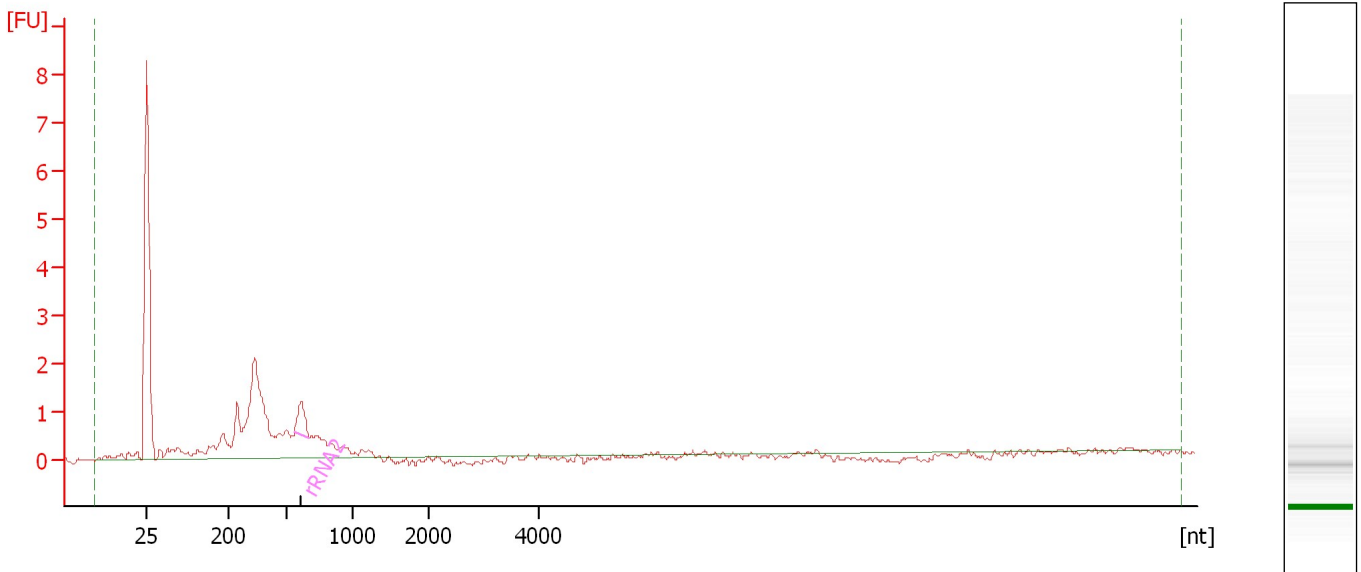
Name	Start Size [nt]	End Size [nt]	Area	% of total Area
rRNA2	543	648	1.4	4.2

Assay Class: mRNA Pico
Data Path: C:\... bioanalyzer\2100 expert\data\2017-10-13\2017-10-13_001.xad

Created: 10/13/2017 10:23:32 AM
Modified: 10/13/2017 10:49:27 AM

Electropherogram Summary Continued ...

36 [HiSeq_1103 Ribodepleted RNA]



Overall Results for sample 10 : 36

RNA Area: 24.7 rRNA Contamination: 4.9 %
RNA Concentration: 356 pg/μl

Fragment table for sample 10 : 36

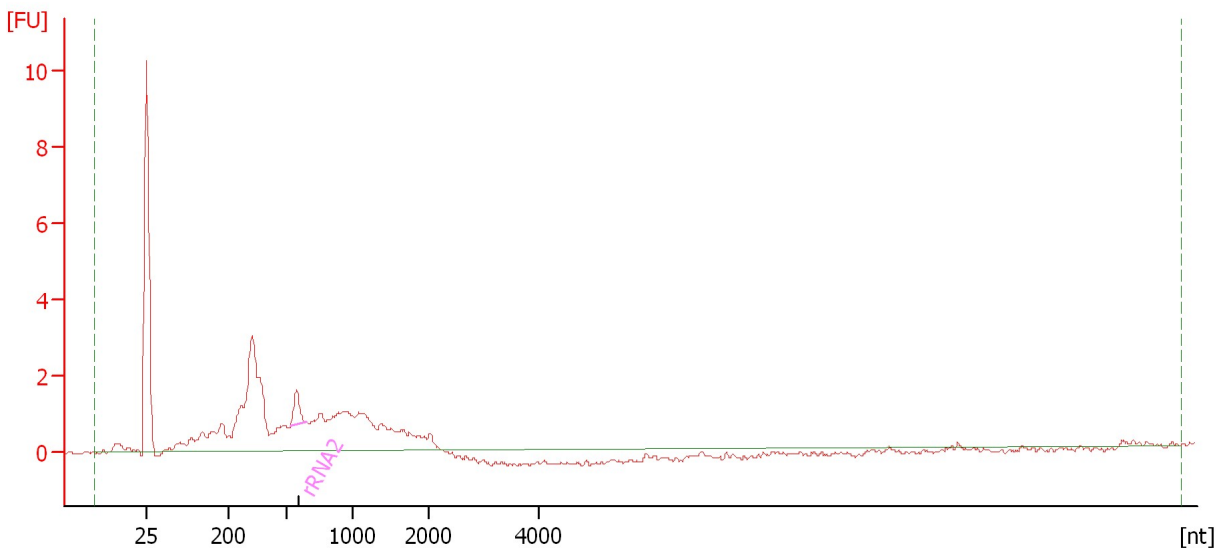
Name	Start Size [nt]	End Size [nt]	Area	% of total Area
rRNA2	556	666	1.2	4.9

Assay Class: mRNA Pico
Data Path: C:\... bioanalyzer\2100 expert\data\2017-10-13\2017-10-13_001.xad

Created: 10/13/2017 10:23:32 AM
Modified: 10/13/2017 10:49:27 AM

Electropherogram Summary Continued ...

45 [HiSeq_1103 Ribodepleted RNA]



Overall Results for sample 11 : 45

RNA Area: 45.3 rRNA Contamination: 2.9 %
RNA Concentration: 654 pg/μl

Fragment table for sample 11 : 45

Name	Start Size [nt]	End Size [nt]	Area	% of total Area
rRNA2	525	648	1.3	2.9

Assay Class: mRNA Pico
Data Path: C:\... bioanalyzer\2100 expert\data\2017-10-13\2017-10-13_001.xad

Created: 10/13/2017 10:23:32 AM
Modified: 10/13/2017 10:49:27 AM

Gel Image

