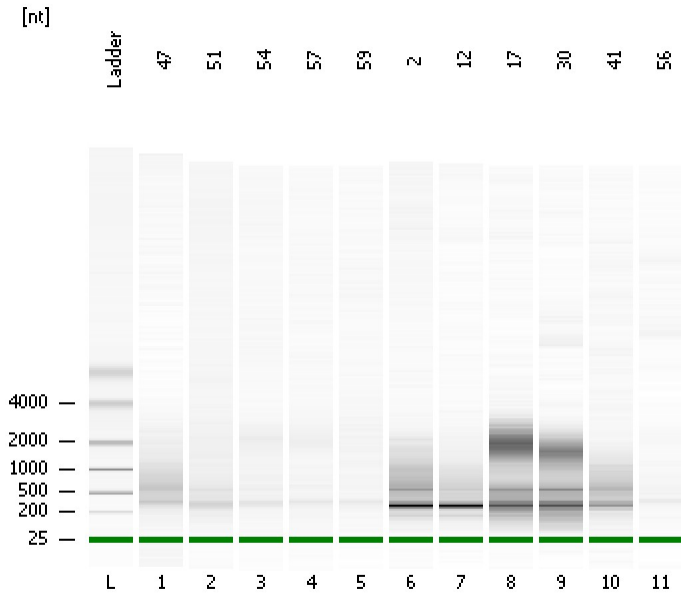


Assay Class: mRNA Pico
Data Path: C:\... bioanalyzer\2100 expert\data\2017-10-13\2017-10-13_002.xad

Created: 10/13/2017 11:00:38 AM
Modified: 10/13/2017 11:25:41 AM

Electrophoresis File Run Summary



Instrument Information:

Instrument Name: DE13701086 Firmware: C.01.069
Serial#: DE13701086 Type: G2938B

Assay Information:

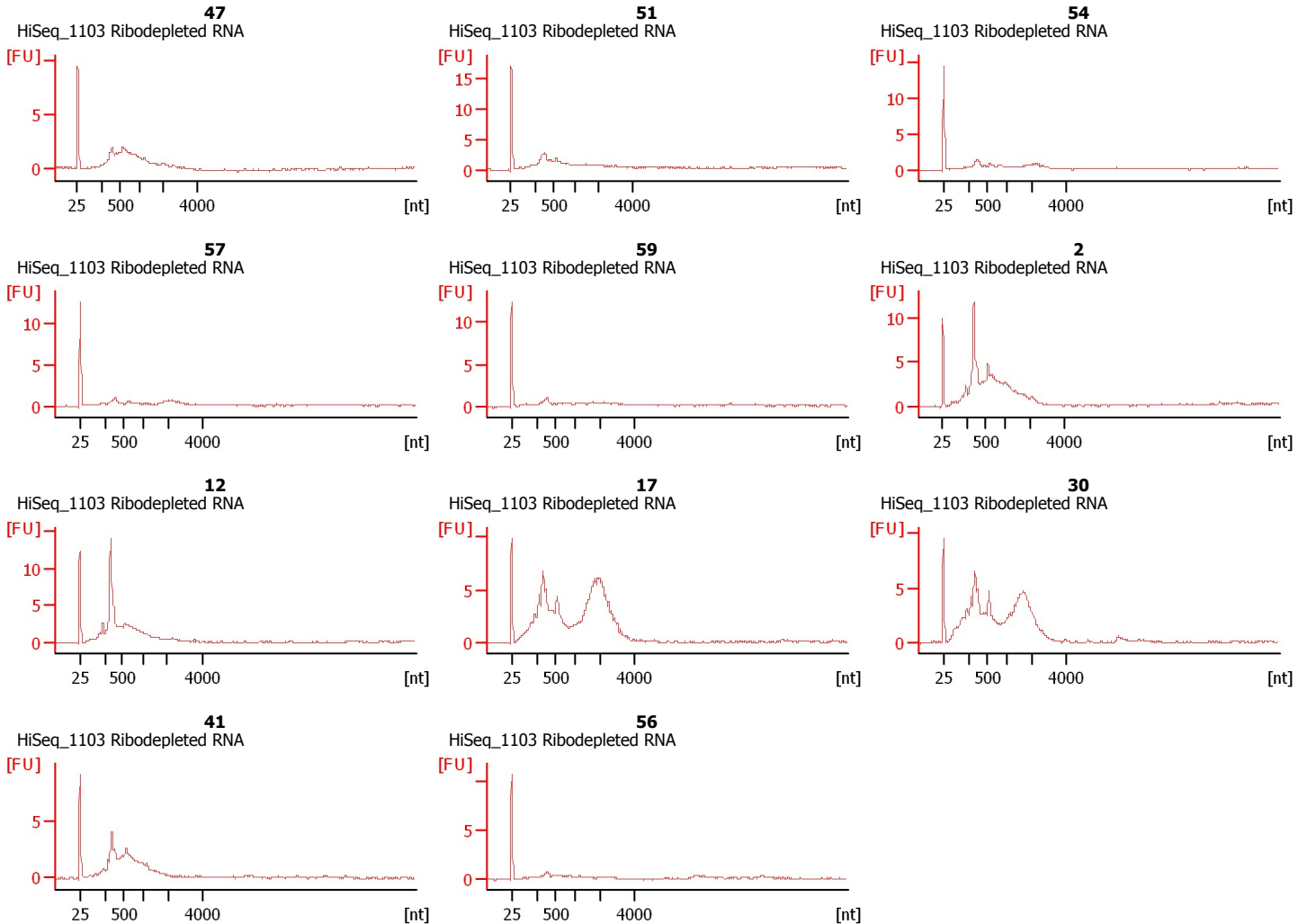
Assay Origin Path: C:\Program Files\Agilent\2100 bioanalyzer\2100 expert\assays\RNA\mRNA Pico Series II.xsy

Assay Class: mRNA Pico
Version: 2.6
Assay Comments: mRNA Analysis pg sensitivity

© Copyright 2003 - 2009 Agilent Technologies, Inc.

Chip Information:

Chip Lot #:
Reagent Kit Lot #:
Chip Comments:



Assay Class: mRNA Pico
Data Path: C:\... bioanalyzer\2100 expert\data\2017-10-13\2017-10-13_002.xad

Created: 10/13/2017 11:00:38 AM
Modified: 10/13/2017 11:25:41 AM

Electrophoresis File Run Summary (Chip Summary)

Sample Name	Sample Comment	Status	Result Label	Result Color
47	HiSeq_1103 Ribodepleted RNA	✓		
51	HiSeq_1103 Ribodepleted RNA	✓		
54	HiSeq_1103 Ribodepleted RNA	✓		
57	HiSeq_1103 Ribodepleted RNA	✓		
59	HiSeq_1103 Ribodepleted RNA	✓		
2	HiSeq_1103 Ribodepleted RNA	✓		
12	HiSeq_1103 Ribodepleted RNA	✓		
17	HiSeq_1103 Ribodepleted RNA	✓		
30	HiSeq_1103 Ribodepleted RNA	✓		
41	HiSeq_1103 Ribodepleted RNA	✓		
56	HiSeq_1103 Ribodepleted RNA	✓		
Ladder		✓		

Chip Lot #**Reagent Kit Lot #****Chip Comments :**

Assay Class: mRNA Pico
Data Path: C:\... bioanalyzer\2100 expert\data\2017-10-13\2017-10-13_002.xad

Created: 10/13/2017 11:00:38 AM
Modified: 10/13/2017 11:25:41 AM

Electrophoresis Assay Details

General Analysis Settings

Number of Available Sample and Ladder Wells (Max.) : 12
Minimum Visible Range [s] : 14
Maximum Visible Range [s] : 85
Start Analysis Time Range [s] : 15
End Analysis Time Range [s] : 84
Ladder Concentration [pg/ μ l] : 1000
Lower Marker Concentration [pg/ μ l] : 0
Upper Marker Concentration [pg/ μ l] : 0
Used Lower Marker for Quantitation
Standard Curve Fit is Logarithmic
Show Data Aligned to Lower Marker

Integrator Settings

Integration Start Time [s] : 15
Integration End Time [s] : 84
Slope Threshold : 0.2
Height Threshold [FU] : 0.5
Area Threshold : 0.1
Width Threshold [s] : 0.2
Baseline Plateau [s] : 0.5

Filter Settings

Filter Width [s] : 0.5
Polynomial Order : 4

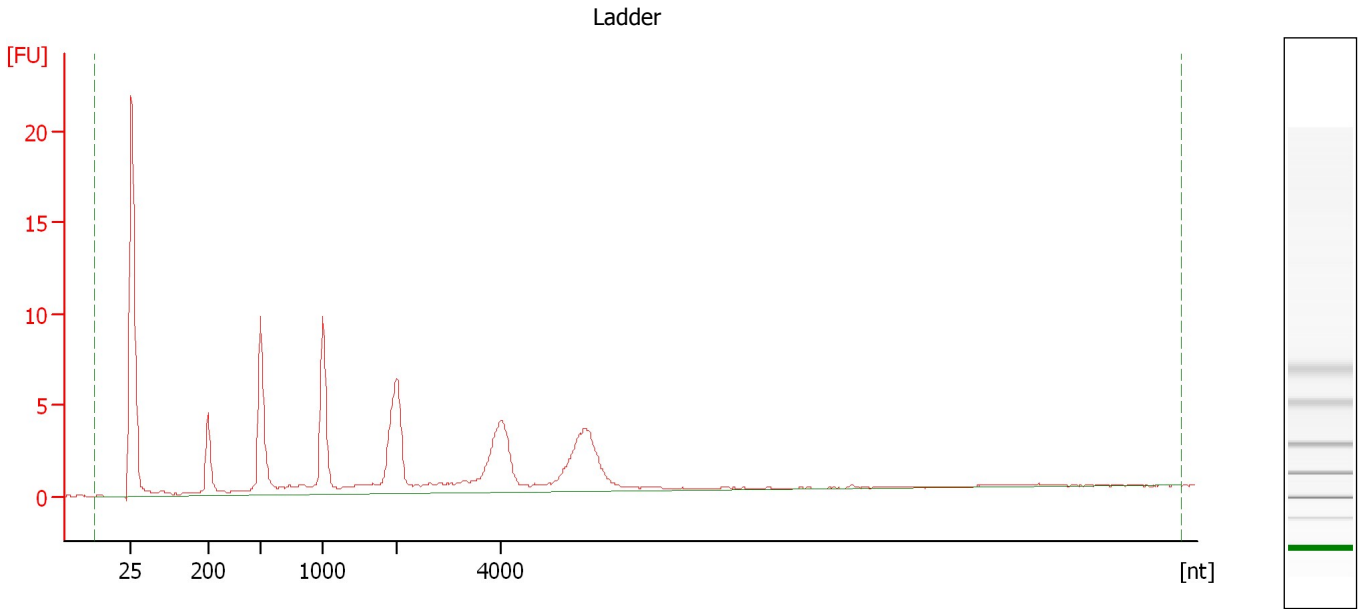
Ladder

Ladder Peak	Size
1	25
2	200
3	500
4	1000
5	2000
6	4000

Assay Class: mRNA Pico
Data Path: C:\... bioanalyzer\2100 expert\data\2017-10-13\2017-10-13_002.xad

Created: 10/13/2017 11:00:38 AM
Modified: 10/13/2017 11:25:41 AM

Electropherogram Summary



Overall Results for Ladder

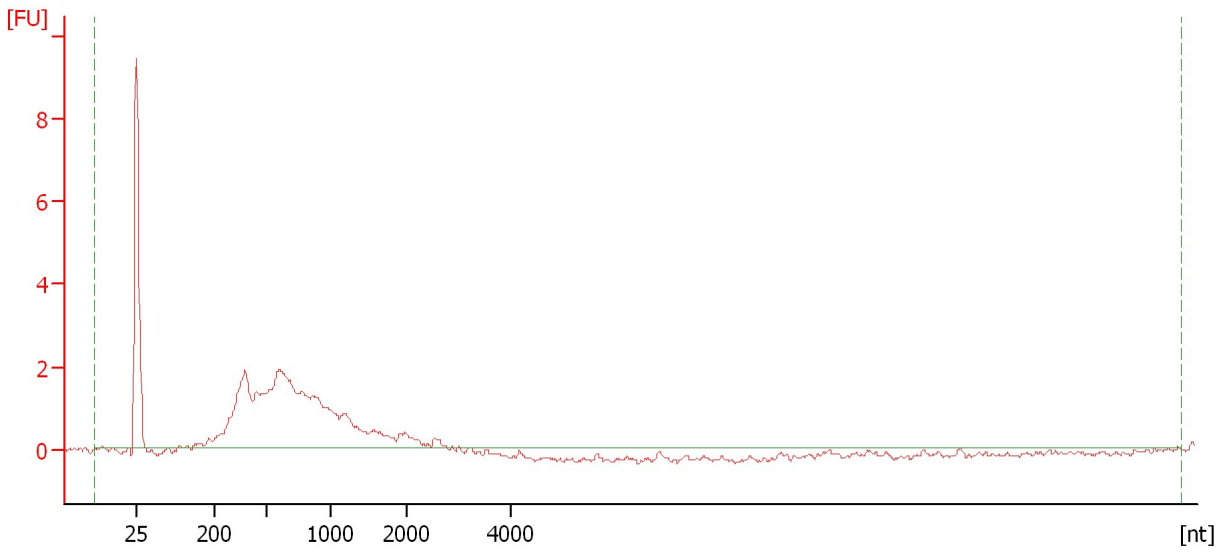
RNA Area: 102.1 RNA Concentration: 1,000 pg/μl

Assay Class: mRNA Pico
Data Path: C:\... bioanalyzer\2100 expert\data\2017-10-13\2017-10-13_002.xad

Created: 10/13/2017 11:00:38 AM
Modified: 10/13/2017 11:25:41 AM

Electropherogram Summary Continued ...

47 [HiSeq_1103 Ribodepleted RNA]



Overall Results for sample 1 : 47

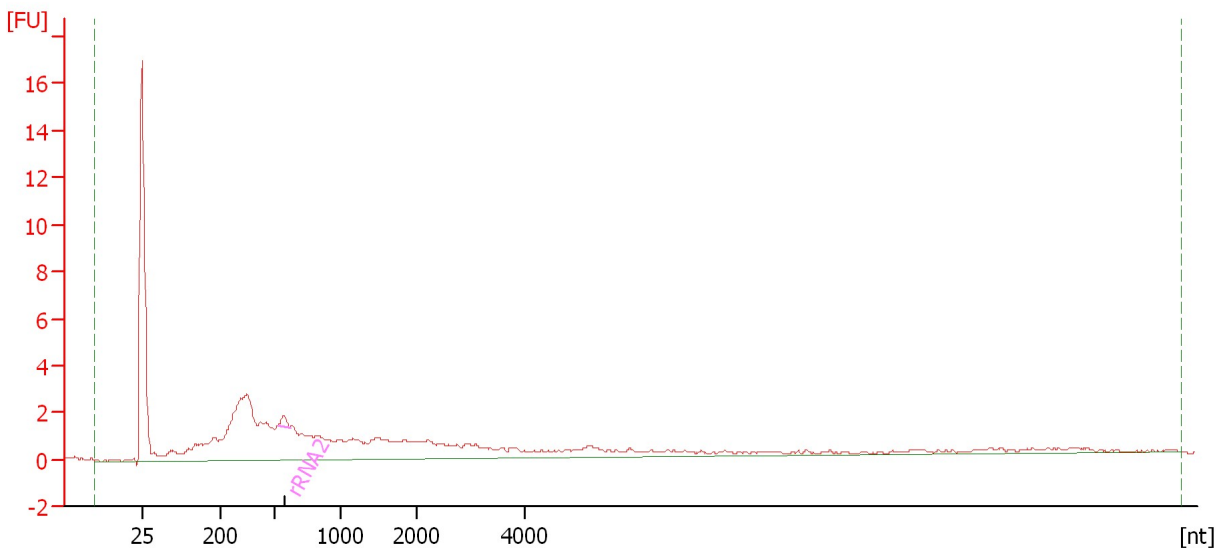
RNA Area:	41.4	rRNA Contamination:	0.0 %
RNA Concentration:	405 pg/μl		

Assay Class: mRNA Pico
Data Path: C:\... bioanalyzer\2100 expert\data\2017-10-13\2017-10-13_002.xad

Created: 10/13/2017 11:00:38 AM
Modified: 10/13/2017 11:25:41 AM

Electropherogram Summary Continued ...

51 [HiSeq_1103 Ribodepleted RNA]



Overall Results for sample 2 : 51

RNA Area: 81.1 rRNA Contamination: 0.8 %
RNA Concentration: 794 pg/μl

Fragment table for sample 2 : 51

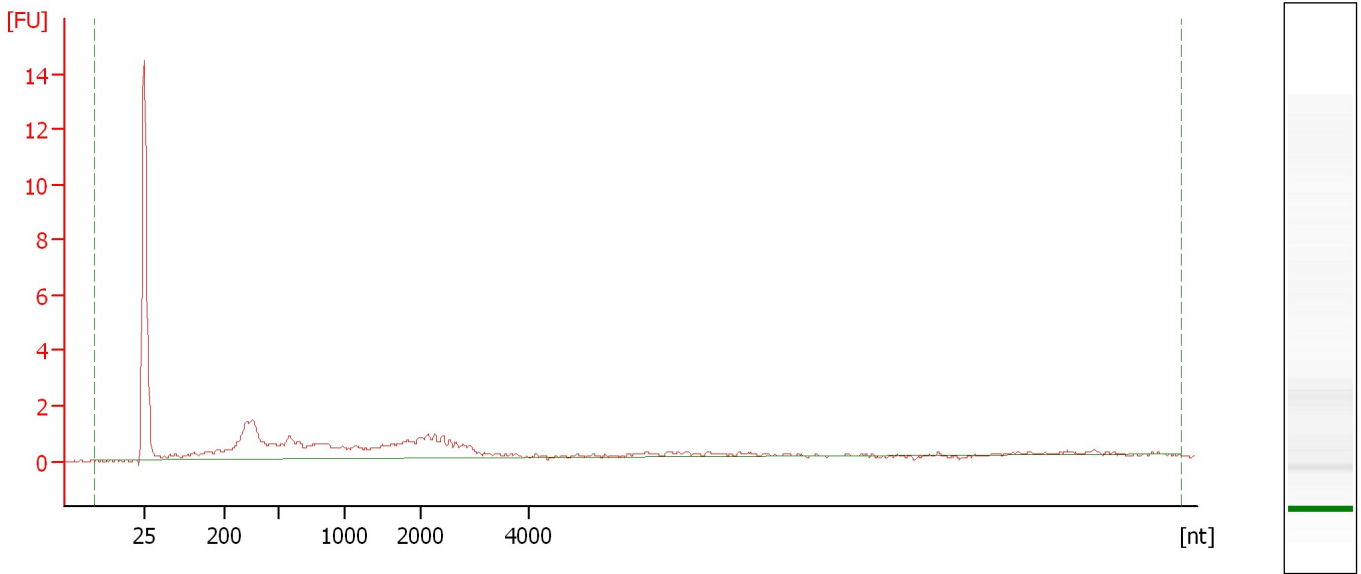
Name	Start Size [nt]	End Size [nt]	Area	% of total Area
rRNA2	519	612	0.6	0.8

Assay Class: mRNA Pico
Data Path: C:\... bioanalyzer\2100 expert\data\2017-10-13\2017-10-13_002.xad

Created: 10/13/2017 11:00:38 AM
Modified: 10/13/2017 11:25:41 AM

Electropherogram Summary Continued ...

54 [HiSeq_1103 Ribodepleted RNA]



Overall Results for sample 3 : 54

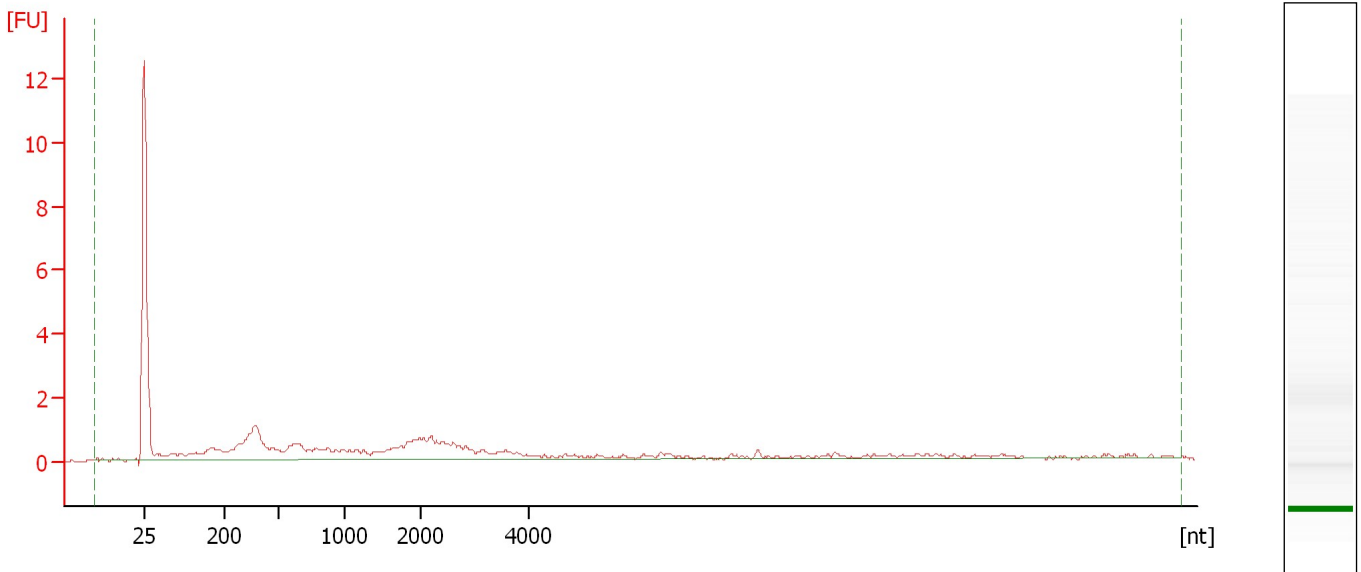
RNA Area: 39.3 rRNA Contamination: 0.0 %
RNA Concentration: 385 pg/μl

Assay Class: mRNA Pico
Data Path: C:\... bioanalyzer\2100 expert\data\2017-10-13\2017-10-13_002.xad

Created: 10/13/2017 11:00:38 AM
Modified: 10/13/2017 11:25:41 AM

Electropherogram Summary Continued ...

57 [HiSeq_1103 Ribodepleted RNA]



Overall Results for sample 4 : 57

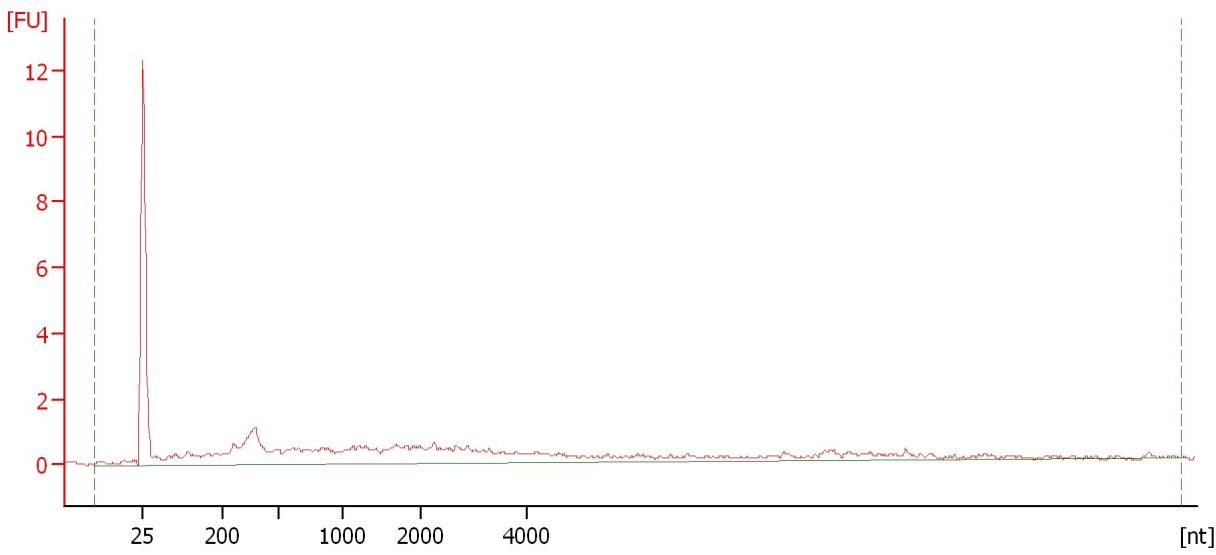
RNA Area:	32.3	rRNA Contamination:	0.0 %
RNA Concentration:	316 pg/μl		

Assay Class: mRNA Pico
Data Path: C:\... bioanalyzer\2100 expert\data\2017-10-13\2017-10-13_002.xad

Created: 10/13/2017 11:00:38 AM
Modified: 10/13/2017 11:25:41 AM

Electropherogram Summary Continued ...

59 [HiSeq_1103 Ribodepleted RNA]



Overall Results for sample 5 : 59

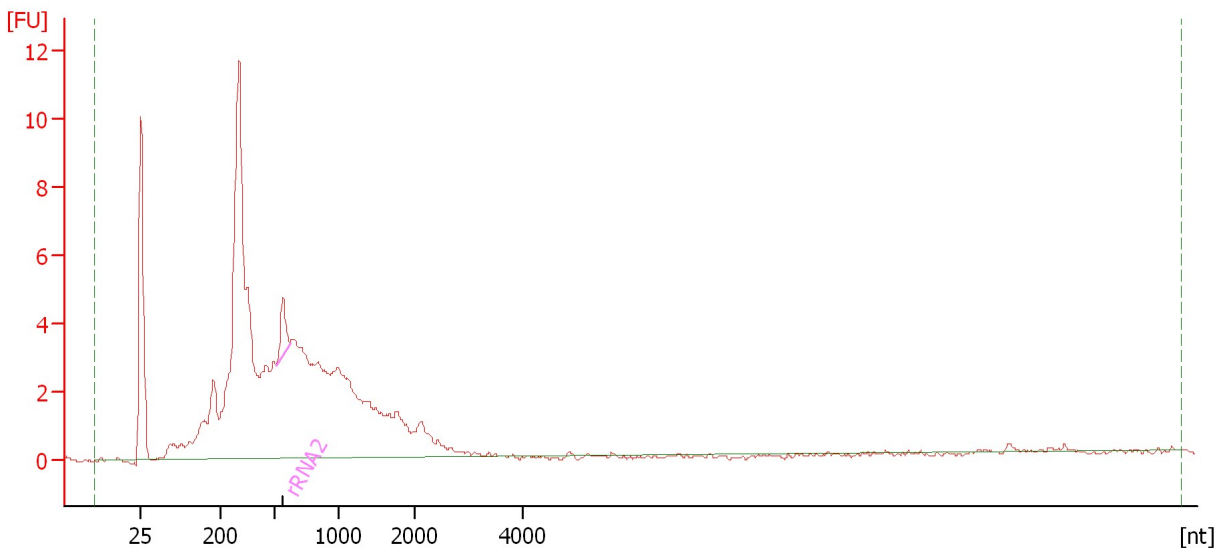
RNA Area:	40.8	rRNA Contamination:	0.0 %
RNA Concentration:	399 pg/μl		

Assay Class: mRNA Pico
Data Path: C:\... bioanalyzer\2100 expert\data\2017-10-13\2017-10-13_002.xad

Created: 10/13/2017 11:00:38 AM
Modified: 10/13/2017 11:25:41 AM

Electropherogram Summary Continued ...

2 [HiSeq_1103 Ribodepleted RNA]



Overall Results for sample 6 : 2

RNA Area: 137.2 rRNA Contamination: 1.6 %
RNA Concentration: 1,344 pg/μl

Fragment table for sample 6 : 2

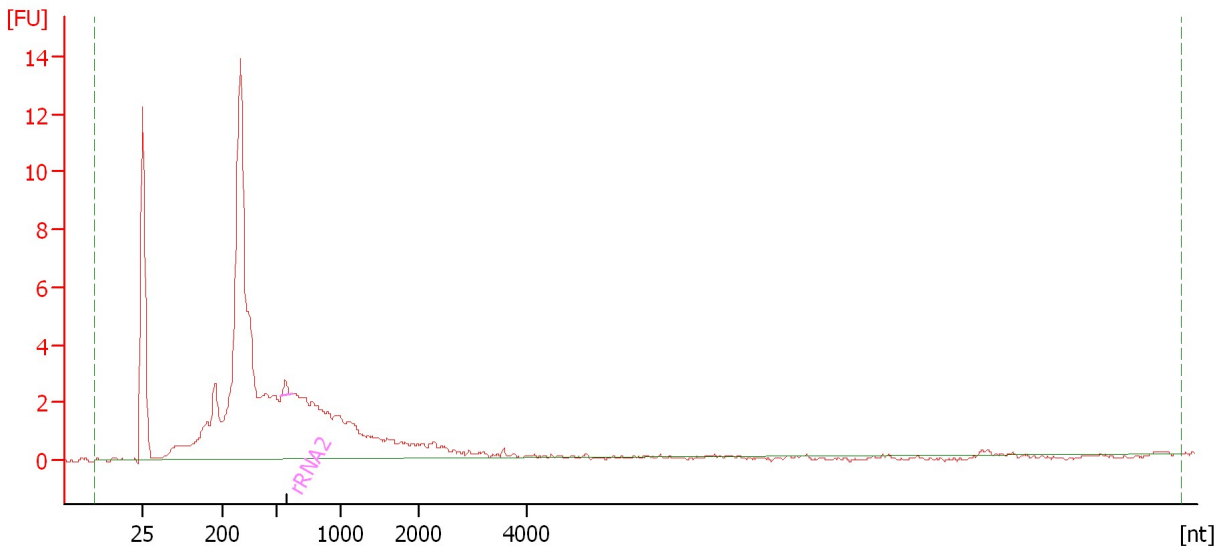
Name	Start Size [nt]	End Size [nt]	Area	% of total Area
rRNA2	516	622	2.2	1.6

Assay Class: mRNA Pico
Data Path: C:\... bioanalyzer\2100 expert\data\2017-10-13\2017-10-13_002.xad

Created: 10/13/2017 11:00:38 AM
Modified: 10/13/2017 11:25:41 AM

Electropherogram Summary Continued ...

12 [HiSeq_1103 Ribodepleted RNA]



Overall Results for sample 7 : 12

RNA Area: 116.0 rRNA Contamination: 0.4 %
RNA Concentration: 1,135 pg/μl

Fragment table for sample 7 : 12

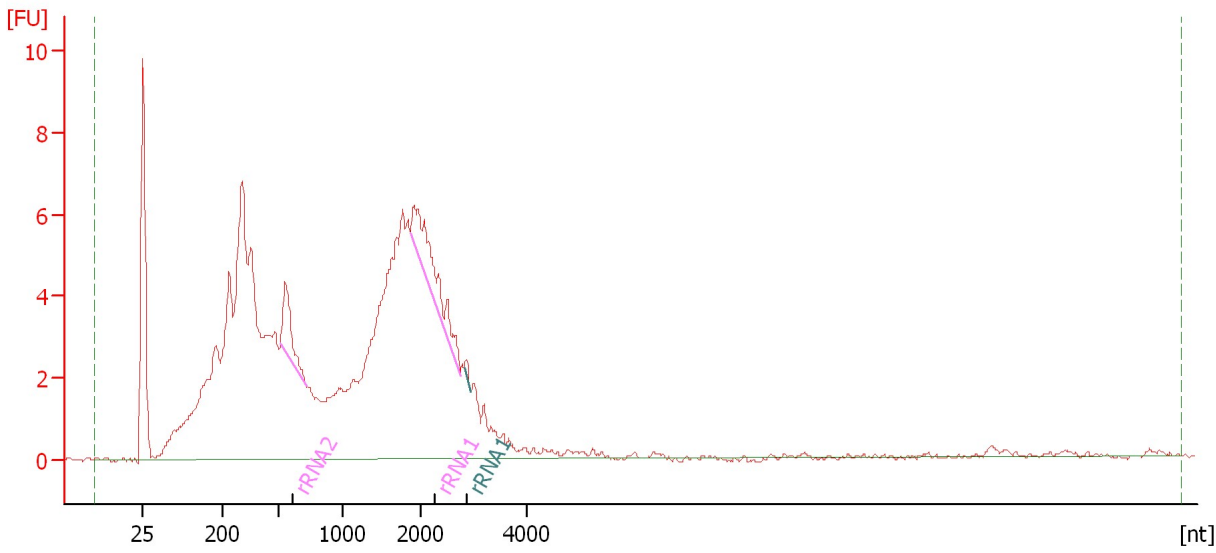
Name	Start Size [nt]	End Size [nt]	Area	% of total Area
rRNA2	535	628	0.5	0.4

Assay Class: mRNA Pico
Data Path: C:\... bioanalyzer\2100 expert\data\2017-10-13\2017-10-13_002.xad

Created: 10/13/2017 11:00:38 AM
Modified: 10/13/2017 11:25:41 AM

Electropherogram Summary Continued ...

17 [HiSeq_1103 Ribodepleted RNA]



Overall Results for sample 8 : 17

RNA Area: 203.3 rRNA Contamination: 5.1 %
RNA Concentration: 1,991 pg/μl

Fragment table for sample 8 : 17

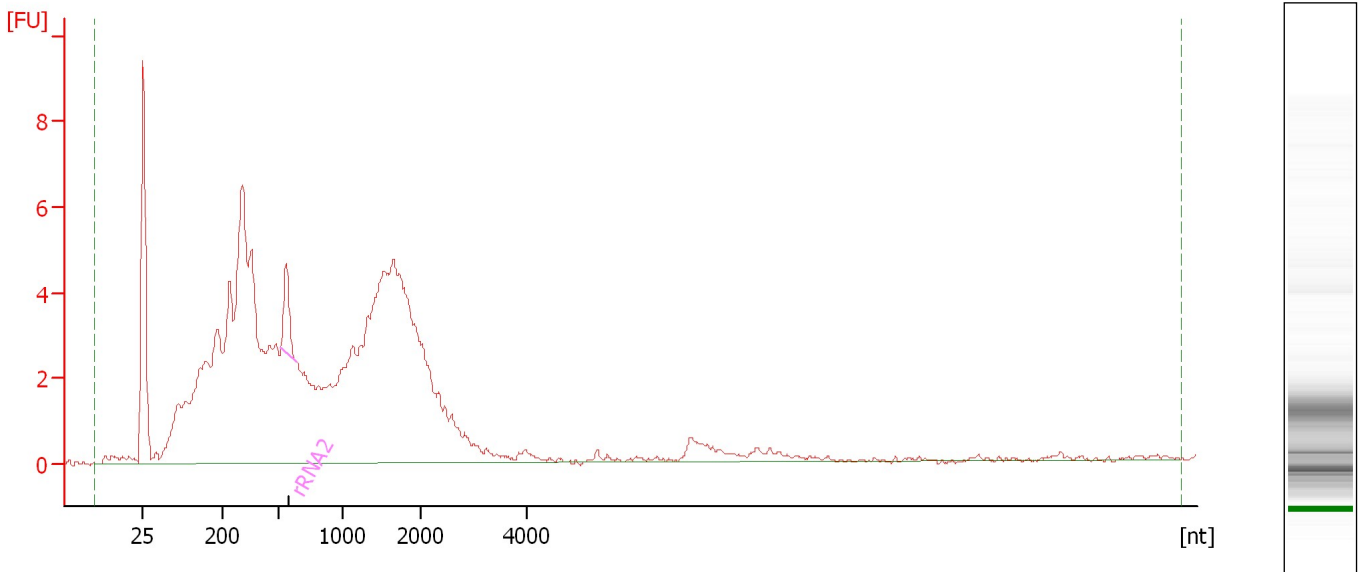
Name	Start Size [nt]	End Size [nt]	Area	% of total Area
rRNA2	520	717	3.8	1.9
rRNA1	1,879	2,758	6.4	3.1
rRNA1	2,817	2,935	0.3	0.1

Assay Class: mRNA Pico
Data Path: C:\... bioanalyzer\2100 expert\data\2017-10-13\2017-10-13_002.xad

Created: 10/13/2017 11:00:38 AM
Modified: 10/13/2017 11:25:41 AM

Electropherogram Summary Continued ...

30 [HiSeq_1103 Ribodepleted RNA]



Overall Results for sample 9 : 30

RNA Area: 181.0 rRNA Contamination: 1.6 %
RNA Concentration: 1,772 pg/μl

Fragment table for sample 9 : 30

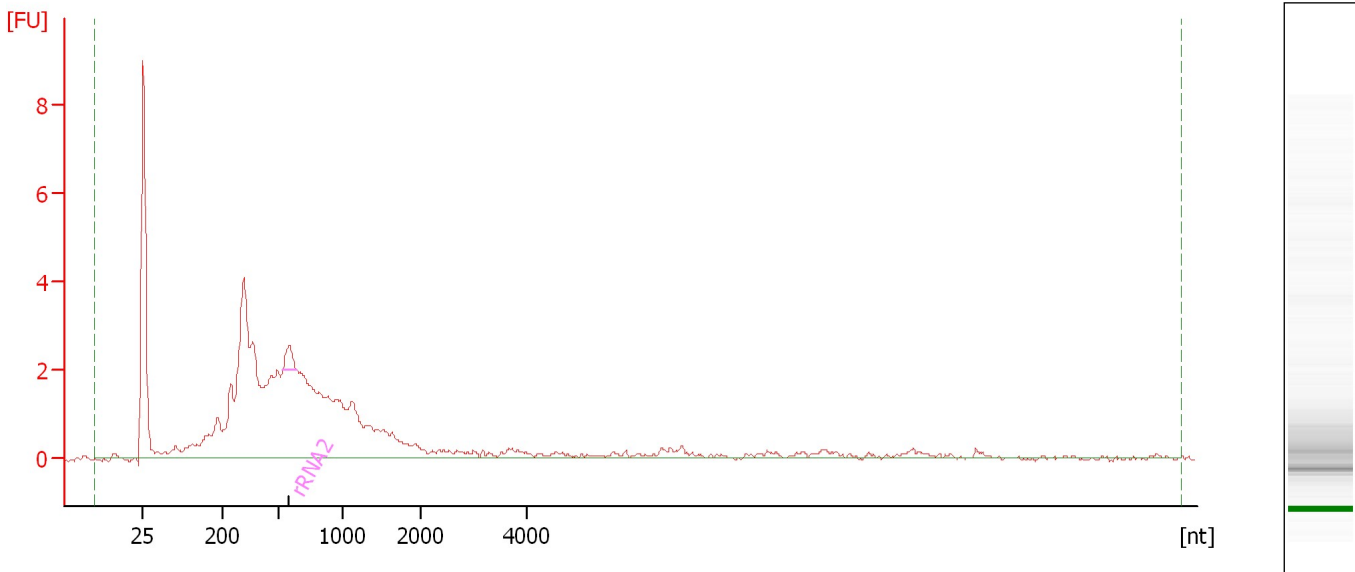
Name	Start Size [nt]	End Size [nt]	Area	% of total Area
rRNA2	526	643	3.0	1.6

Assay Class: mRNA Pico
Data Path: C:\... bioanalyzer\2100 expert\data\2017-10-13\2017-10-13_002.xad

Created: 10/13/2017 11:00:38 AM
Modified: 10/13/2017 11:25:41 AM

Electropherogram Summary Continued ...

41 [HiSeq_1103 Ribodepleted RNA]



Overall Results for sample 10 : 41

RNA Area: 73.5 rRNA Contamination: 1.3 %
RNA Concentration: 719 pg/μl

Fragment table for sample 10 : 41

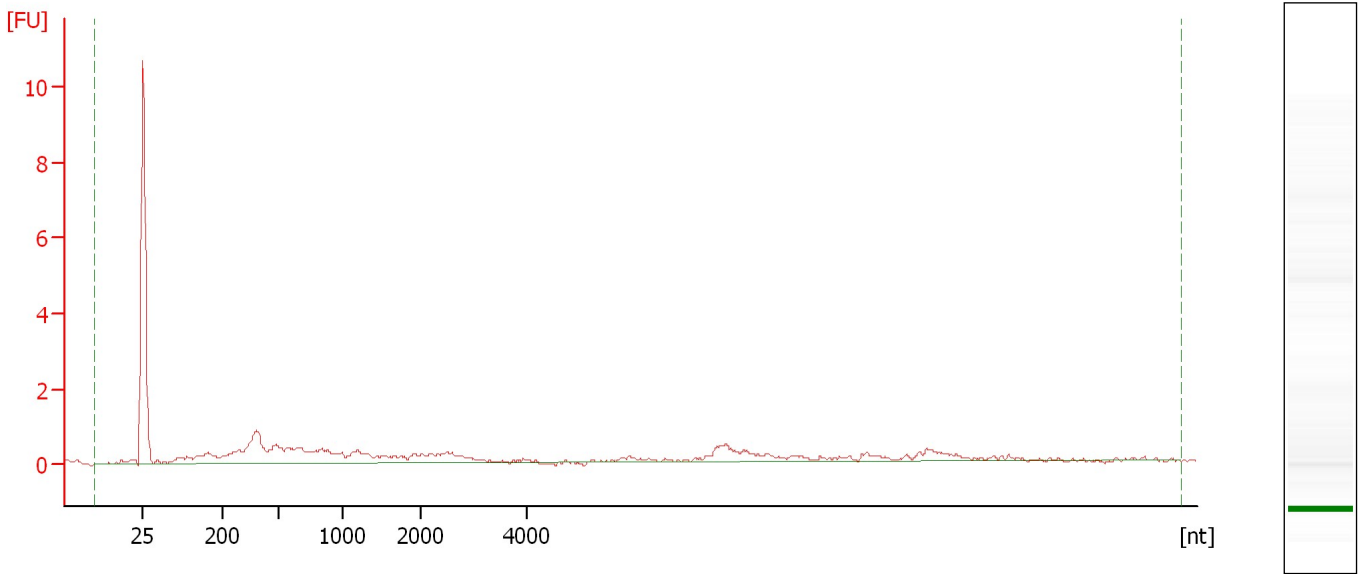
Name	Start Size [nt]	End Size [nt]	Area	% of total Area
rRNA2	539	649	1.0	1.3

Assay Class: mRNA Pico
Data Path: C:\... bioanalyzer\2100 expert\data\2017-10-13\2017-10-13_002.xad

Created: 10/13/2017 11:00:38 AM
Modified: 10/13/2017 11:25:41 AM

Electropherogram Summary Continued ...

56 [HiSeq_1103 Ribodepleted RNA]



Overall Results for sample 11 : 56

RNA Area:	25.9	rRNA Contamination:	0.0 %
RNA Concentration:	253 pg/μl		

Assay Class: mRNA Pico
Data Path: C:\... bioanalyzer\2100 expert\data\2017-10-13\2017-10-13_002.xad

Created: 10/13/2017 11:00:38 AM
Modified: 10/13/2017 11:25:41 AM

Gel Image

