

Assay Class: mRNA Pico  
Data Path: C:\... bioanalyzer\2100 expert\data\2017-10-13\2017-10-13\_002.xad

Created: 10/13/2017 11:00:38 AM  
Modified: 10/13/2017 11:25:41 AM

**Electrophoresis File Run Summary**

Instrument Information:

Instrument Name: DE13701086      Firmware: C.01.069  
Serial#: DE13701086      Type: G2938B

Assay Information:

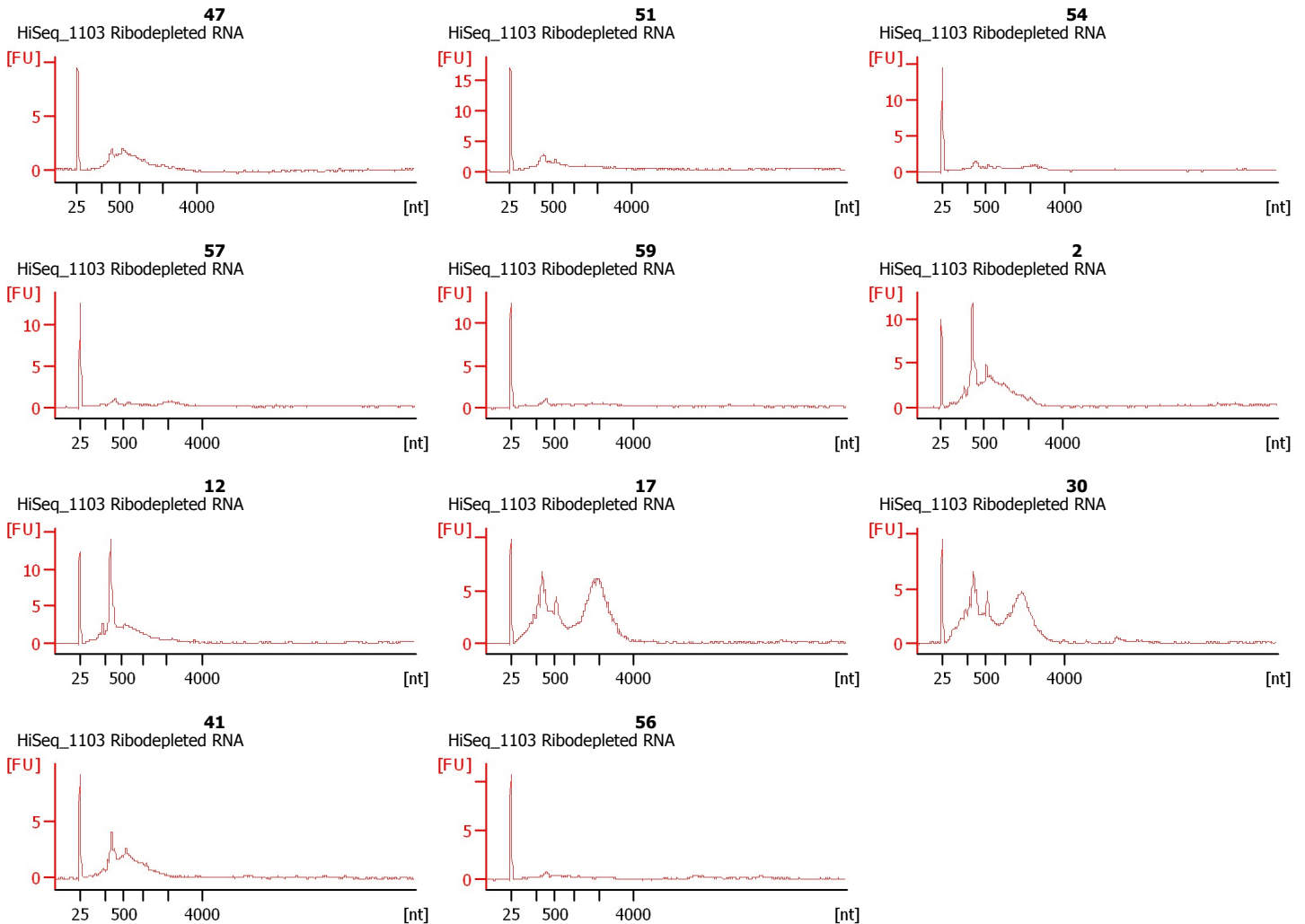
Assay Origin Path: C:\Program Files\Agilent\2100 bioanalyzer\2100 expert\assays\RNA\mRNA Pico Series II.xsy

Assay Class: mRNA Pico  
Version: 2.6  
Assay Comments: mRNA Analysis pg sensitivity

© Copyright 2003 - 2009 Agilent Technologies, Inc.

Chip Information:

Chip Lot #:  
Reagent Kit Lot #:  
Chip Comments:



Assay Class: mRNA Pico  
Data Path: C:\... bioanalyzer\2100 expert\data\2017-10-13\2017-10-13\_002.xad

Created: 10/13/2017 11:00:38 AM  
Modified: 10/13/2017 11:25:41 AM

**Electrophoresis File Run Summary (Chip Summary)**

Sample Name	Sample Comment	Status	Result Label	Result Color
47	HiSeq_1103 Ribodepleted RNA	✓		
51	HiSeq_1103 Ribodepleted RNA	✓		
54	HiSeq_1103 Ribodepleted RNA	✓		
57	HiSeq_1103 Ribodepleted RNA	✓		
59	HiSeq_1103 Ribodepleted RNA	✓		
2	HiSeq_1103 Ribodepleted RNA	✓		
12	HiSeq_1103 Ribodepleted RNA	✓		
17	HiSeq_1103 Ribodepleted RNA	✓		
30	HiSeq_1103 Ribodepleted RNA	✓		
41	HiSeq_1103 Ribodepleted RNA	✓		
56	HiSeq_1103 Ribodepleted RNA	✓		
Ladder		✓		

**Chip Lot #****Reagent Kit Lot #****Chip Comments :**

Assay Class: mRNA Pico  
Data Path: C:\... bioanalyzer\2100 expert\data\2017-10-13\2017-10-13\_002.xad

Created: 10/13/2017 11:00:38 AM  
Modified: 10/13/2017 11:25:41 AM

**Electrophoresis Assay Details**

**General Analysis Settings**

Number of Available Sample and Ladder Wells (Max.) : 12  
Minimum Visible Range [s] : 14  
Maximum Visible Range [s] : 85  
Start Analysis Time Range [s] : 15  
End Analysis Time Range [s] : 84  
Ladder Concentration [pg/μl] : 1000  
Lower Marker Concentration [pg/μl] : 0  
Upper Marker Concentration [pg/μl] : 0  
Used Lower Marker for Quantitation  
Standard Curve Fit is Logarithmic  
Show Data Aligned to Lower Marker

**Integrator Settings**

Integration Start Time [s] : 15  
Integration End Time [s] : 84  
Slope Threshold : 0.2  
Height Threshold [FU] : 0.5  
Area Threshold : 0.1  
Width Threshold [s] : 0.2  
Baseline Plateau [s] : 0.5

**Filter Settings**

Filter Width [s] : 0.5  
Polynomial Order : 4

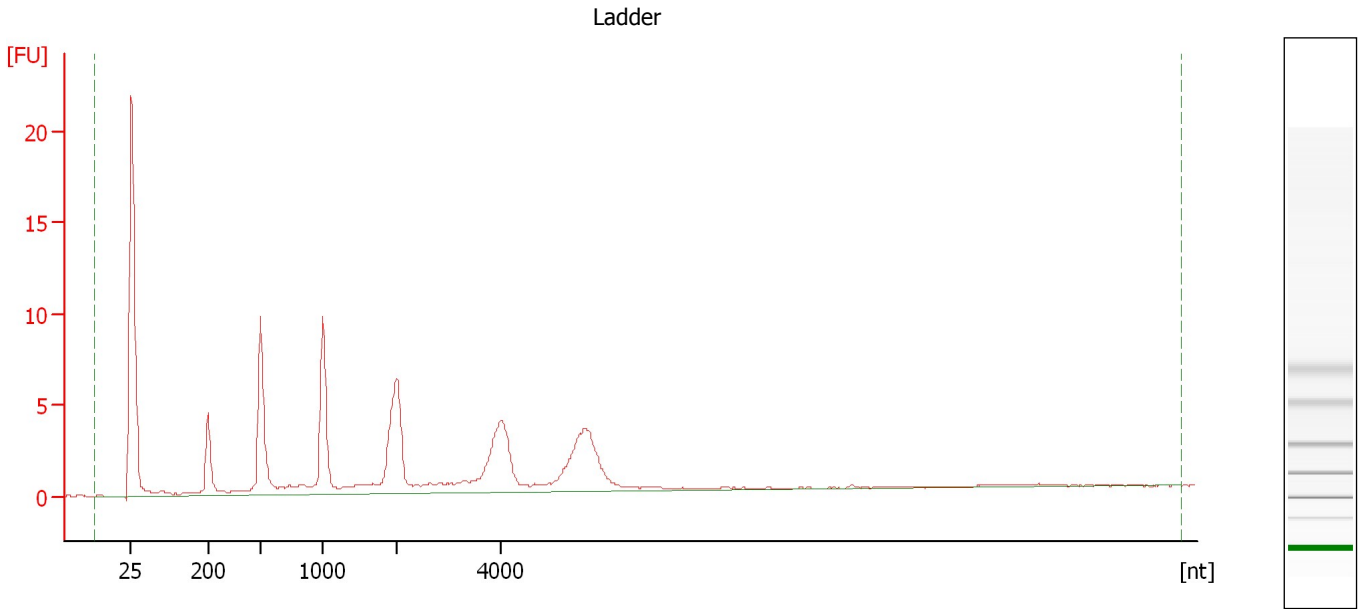
**Ladder**

Ladder Peak	Size
1	25
2	200
3	500
4	1000
5	2000
6	4000

Assay Class: mRNA Pico  
Data Path: C:\... bioanalyzer\2100 expert\data\2017-10-13\2017-10-13\_002.xad

Created: 10/13/2017 11:00:38 AM  
Modified: 10/13/2017 11:25:41 AM

**Electropherogram Summary**



**Overall Results for Ladder**

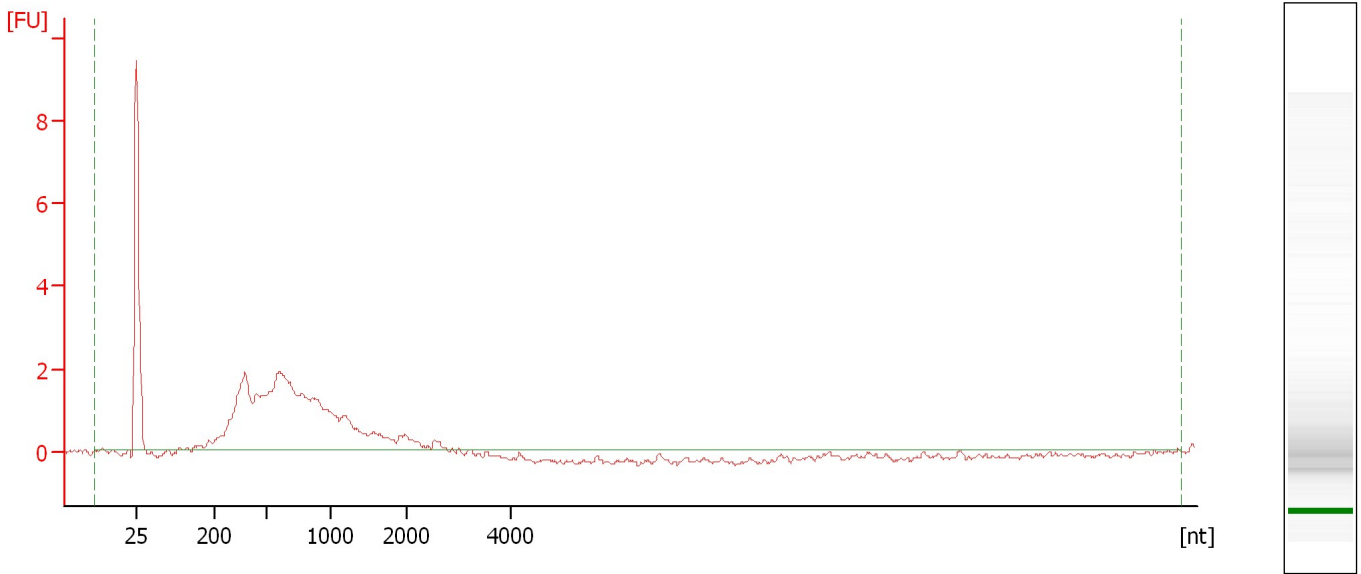
RNA Area: 102.1                      RNA Concentration: 1,000 pg/μl

Assay Class: mRNA Pico  
Data Path: C:\... bioanalyzer\2100 expert\data\2017-10-13\2017-10-13\_002.xad

Created: 10/13/2017 11:00:38 AM  
Modified: 10/13/2017 11:25:41 AM

**Electropherogram Summary Continued ...**

47 [ HiSeq\_1103 Ribodepleted RNA ]



**Overall Results for sample 1 : 47**

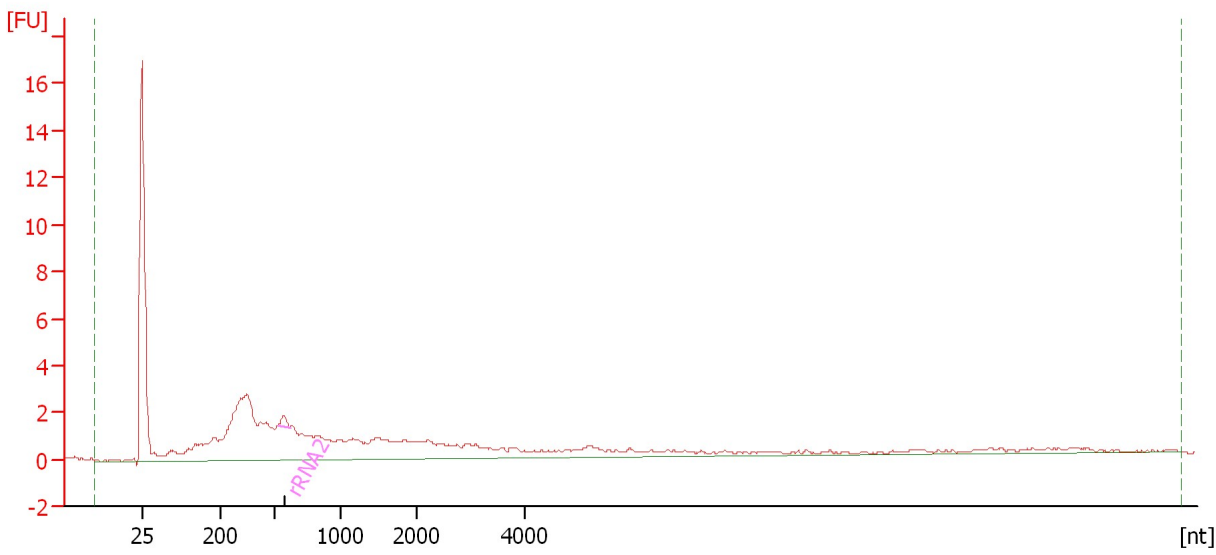
RNA Area:	41.4	rRNA Contamination:	0.0 %
RNA Concentration:	405 pg/μl		

Assay Class: mRNA Pico  
Data Path: C:\... bioanalyzer\2100 expert\data\2017-10-13\2017-10-13\_002.xad

Created: 10/13/2017 11:00:38 AM  
Modified: 10/13/2017 11:25:41 AM

**Electropherogram Summary Continued ...**

51 [ HiSeq\_1103 Ribodepleted RNA ]



**Overall Results for sample 2 : 51**

RNA Area: 81.1                      rRNA Contamination: 0.8 %  
RNA Concentration: 794 pg/μl

**Fragment table for sample 2 : 51**

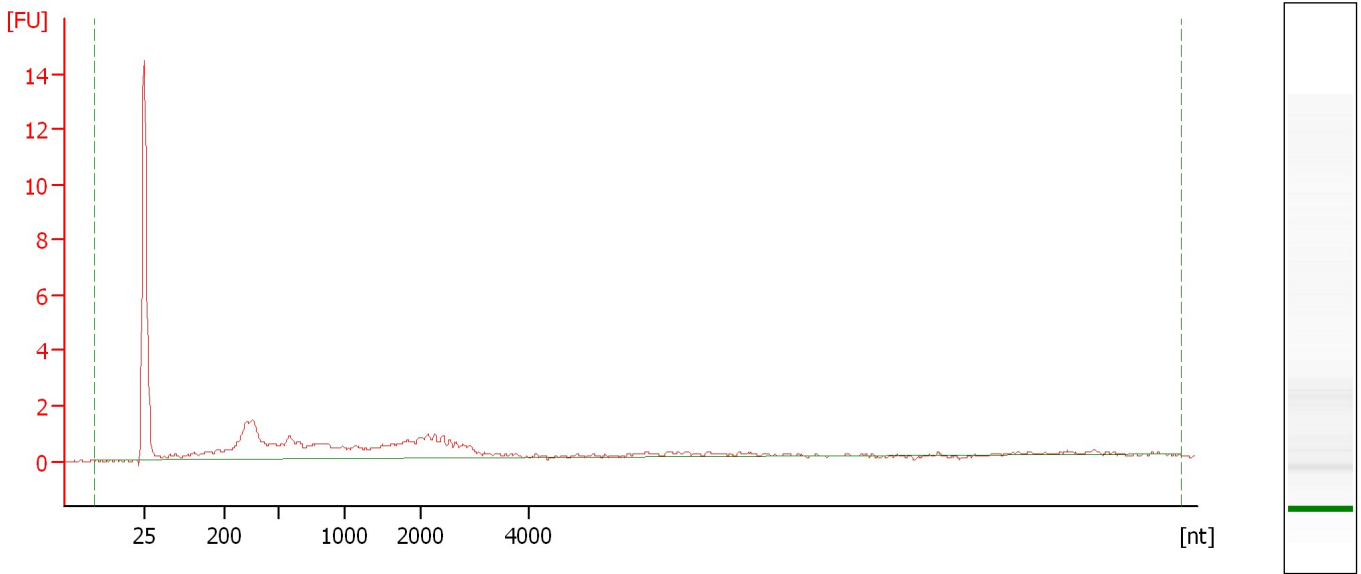
Name	Start Size [nt]	End Size [nt]	Area	% of total Area
rRNA2	519	612	0.6	0.8

Assay Class: mRNA Pico  
Data Path: C:\... bioanalyzer\2100 expert\data\2017-10-13\2017-10-13\_002.xad

Created: 10/13/2017 11:00:38 AM  
Modified: 10/13/2017 11:25:41 AM

**Electropherogram Summary Continued ...**

54 [ HiSeq\_1103 Ribodepleted RNA ]



**Overall Results for sample 3 : 54**

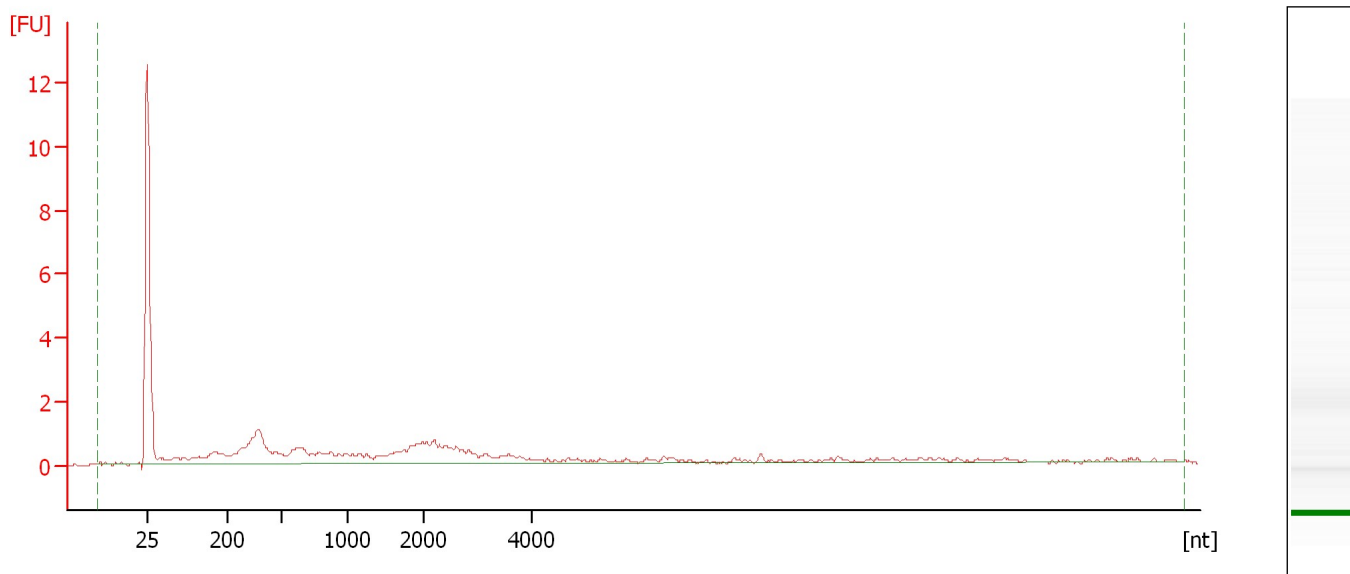
RNA Area:	39.3	rRNA Contamination:	0.0 %
RNA Concentration:	385 pg/μl		

Assay Class: mRNA Pico  
Data Path: C:\... bioanalyzer\2100 expert\data\2017-10-13\2017-10-13\_002.xad

Created: 10/13/2017 11:00:38 AM  
Modified: 10/13/2017 11:25:41 AM

**Electropherogram Summary Continued ...**

57 [ HiSeq\_1103 Ribodepleted RNA ]



**Overall Results for sample 4 : 57**

RNA Area: 32.3                      rRNA Contamination: 0.0 %  
RNA Concentration: 316 pg/μl

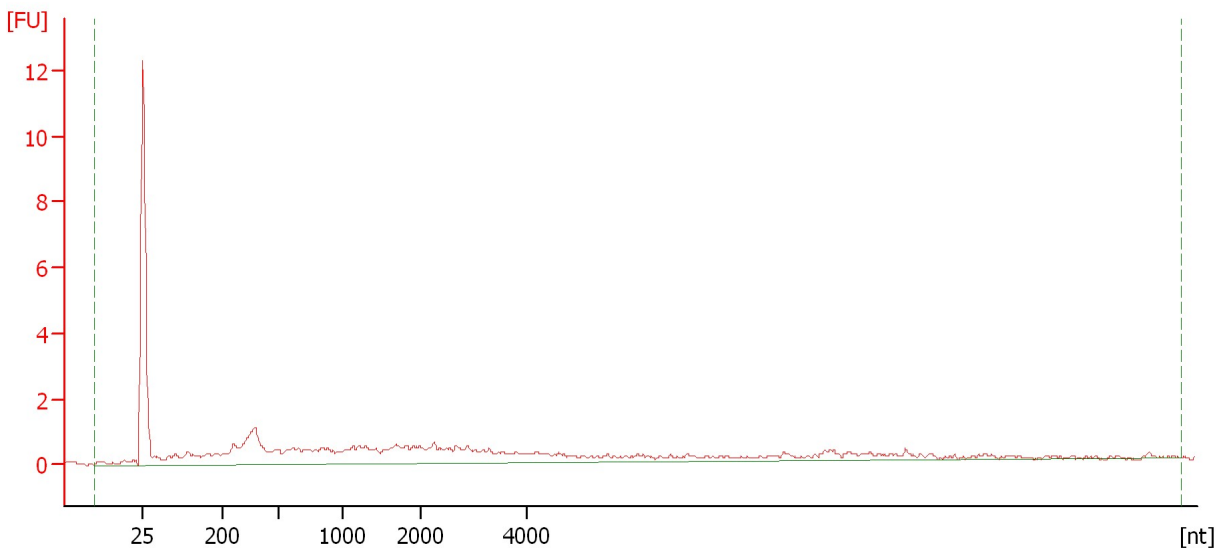


Assay Class: mRNA Pico  
Data Path: C:\... bioanalyzer\2100 expert\data\2017-10-13\2017-10-13\_002.xad

Created: 10/13/2017 11:00:38 AM  
Modified: 10/13/2017 11:25:41 AM

**Electropherogram Summary Continued ...**

59 [ HiSeq\_1103 Ribodepleted RNA ]



**Overall Results for sample 5 : 59**

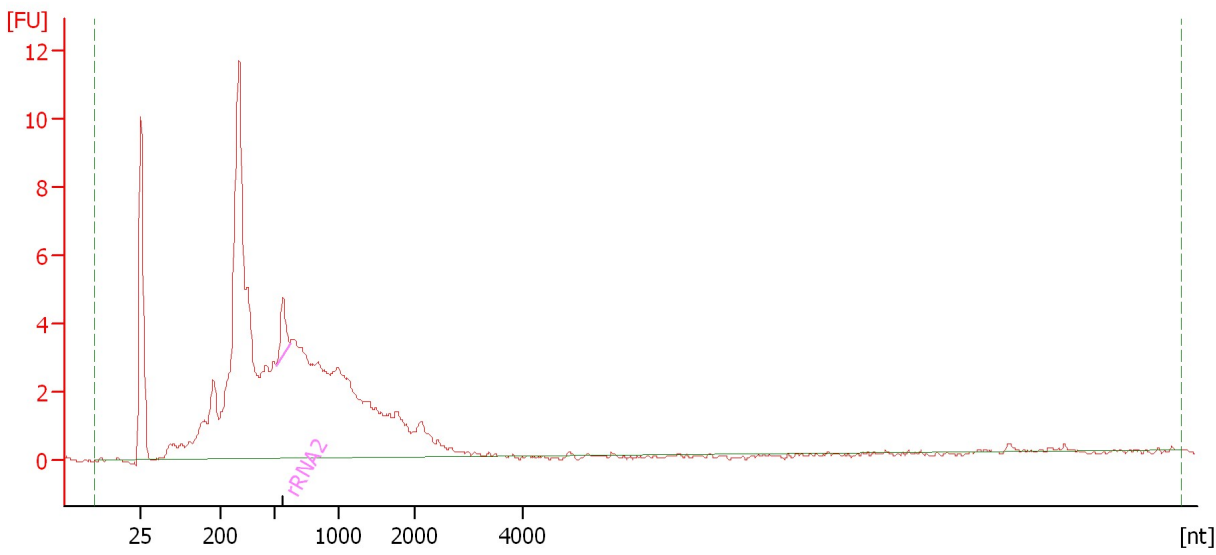
RNA Area:	40.8	rRNA Contamination:	0.0 %
RNA Concentration:	399 pg/μl		

Assay Class: mRNA Pico  
Data Path: C:\... bioanalyzer\2100 expert\data\2017-10-13\2017-10-13\_002.xad

Created: 10/13/2017 11:00:38 AM  
Modified: 10/13/2017 11:25:41 AM

**Electropherogram Summary Continued ...**

2 [ HiSeq\_1103 Ribodepleted RNA ]



**Overall Results for sample 6 : 2**

RNA Area: 137.2                      rRNA Contamination: 1.6 %  
RNA Concentration: 1,344 pg/μl

**Fragment table for sample 6 : 2**

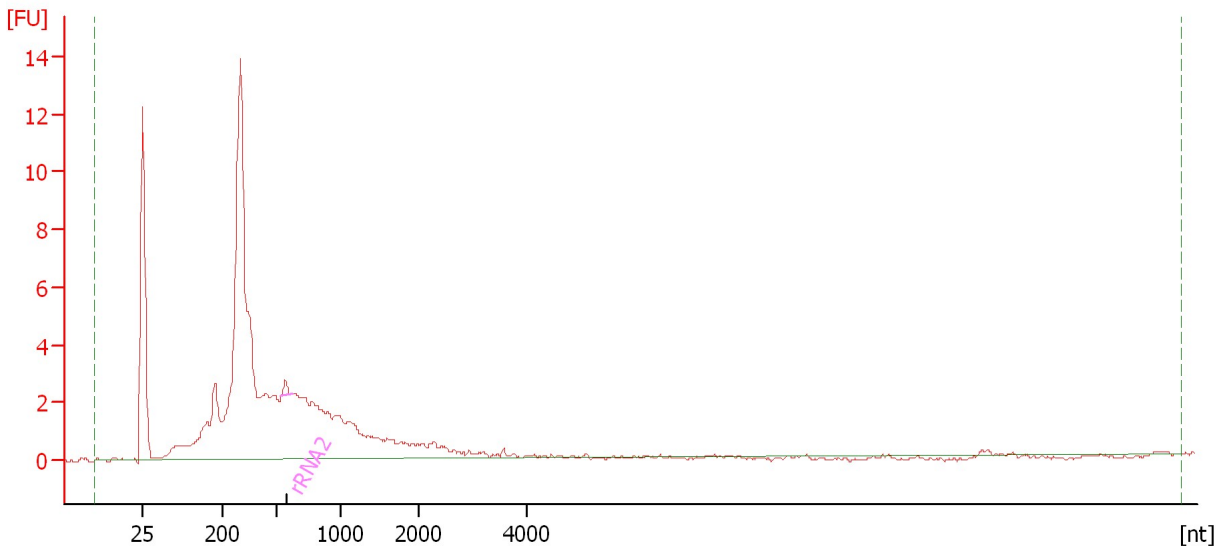
Name	Start Size [nt]	End Size [nt]	Area	% of total Area
rRNA2	516	622	2.2	1.6

Assay Class: mRNA Pico  
Data Path: C:\... bioanalyzer\2100 expert\data\2017-10-13\2017-10-13\_002.xad

Created: 10/13/2017 11:00:38 AM  
Modified: 10/13/2017 11:25:41 AM

**Electropherogram Summary Continued ...**

12 [ HiSeq\_1103 Ribodepleted RNA ]



**Overall Results for sample 7 : 12**

RNA Area: 116.0                      rRNA Contamination: 0.4 %  
RNA Concentration: 1,135 pg/μl

**Fragment table for sample 7 : 12**

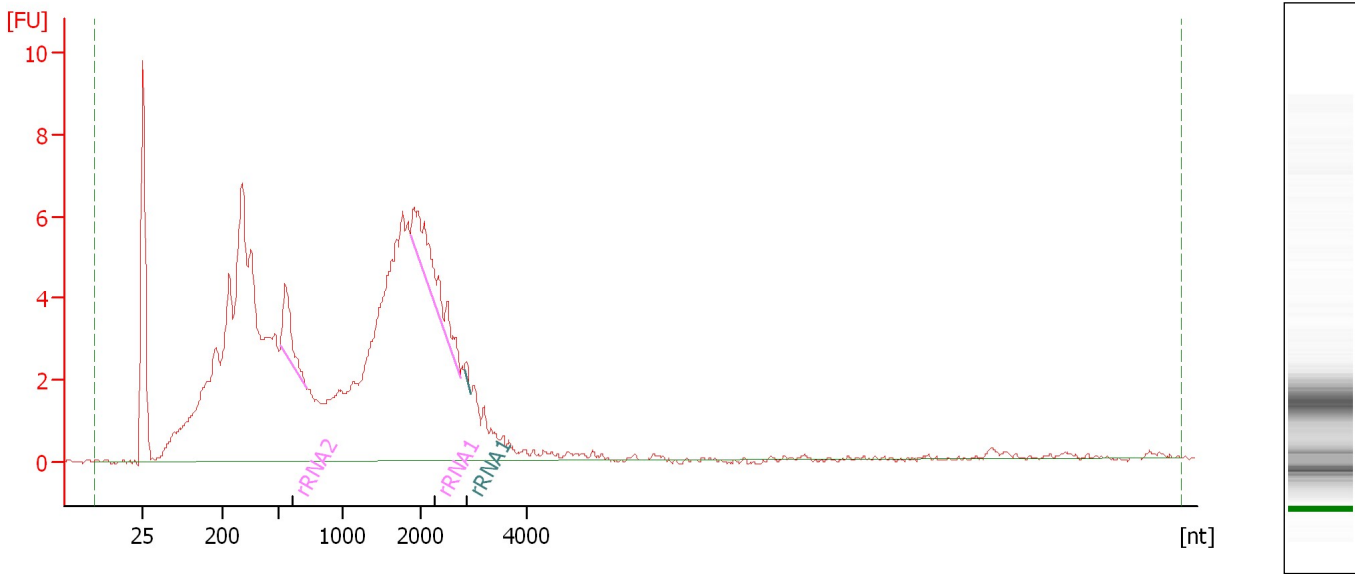
Name	Start Size [nt]	End Size [nt]	Area	% of total Area
rRNA2	535	628	0.5	0.4

Assay Class: mRNA Pico  
Data Path: C:\... bioanalyzer\2100 expert\data\2017-10-13\2017-10-13\_002.xad

Created: 10/13/2017 11:00:38 AM  
Modified: 10/13/2017 11:25:41 AM

**Electropherogram Summary Continued ...**

17 [ HiSeq\_1103 Ribodepleted RNA ]



**Overall Results for sample 8 : 17**

RNA Area: 203.3                      rRNA Contamination: 5.1 %  
RNA Concentration: 1,991 pg/μl

**Fragment table for sample 8 : 17**

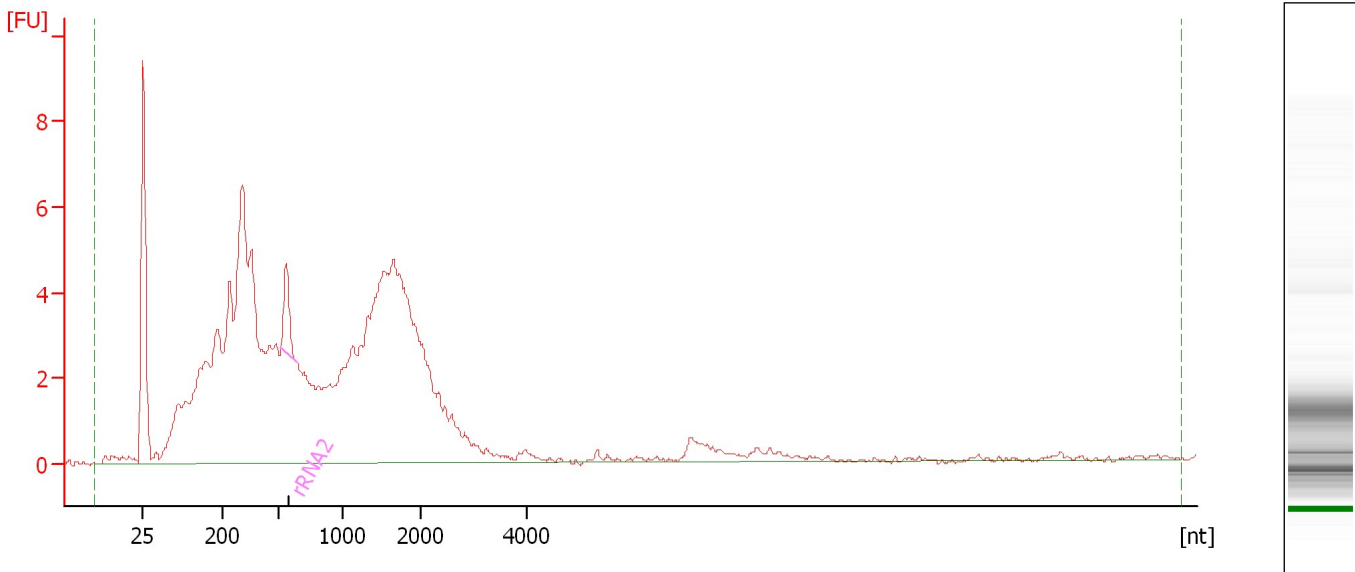
Name	Start Size [nt]	End Size [nt]	Area	% of total Area
rRNA2	520	717	3.8	1.9
rRNA1	1,879	2,758	6.4	3.1
rRNA1	2,817	2,935	0.3	0.1

Assay Class: mRNA Pico  
Data Path: C:\... bioanalyzer\2100 expert\data\2017-10-13\2017-10-13\_002.xad

Created: 10/13/2017 11:00:38 AM  
Modified: 10/13/2017 11:25:41 AM

**Electropherogram Summary Continued ...**

30 [ HiSeq\_1103 Ribodepleted RNA ]



**Overall Results for sample 9 : 30**

RNA Area: 181.0                      rRNA Contamination: 1.6 %  
RNA Concentration: 1,772 pg/μl

**Fragment table for sample 9 : 30**

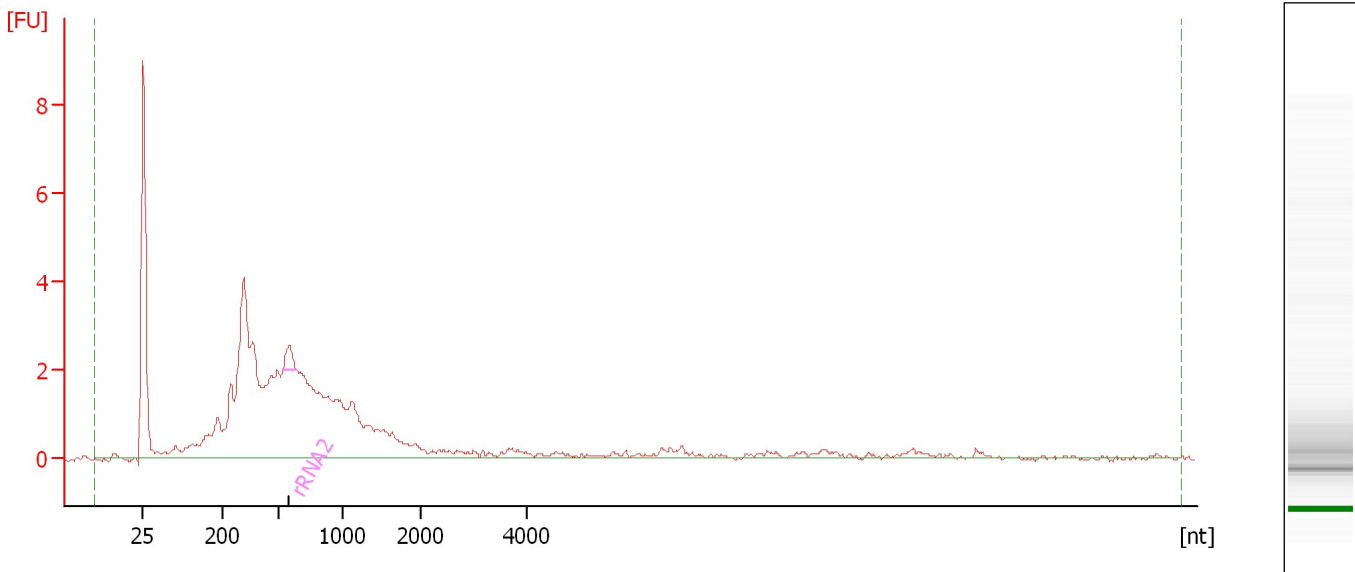
Name	Start Size [nt]	End Size [nt]	Area	% of total Area
rRNA2	526	643	3.0	1.6

Assay Class: mRNA Pico  
Data Path: C:\... bioanalyzer\2100 expert\data\2017-10-13\2017-10-13\_002.xad

Created: 10/13/2017 11:00:38 AM  
Modified: 10/13/2017 11:25:41 AM

**Electropherogram Summary Continued ...**

41 [ HiSeq\_1103 Ribodepleted RNA ]



**Overall Results for sample 10 : 41**

RNA Area: 73.5                      rRNA Contamination: 1.3 %  
RNA Concentration: 719 pg/μl

**Fragment table for sample 10 : 41**

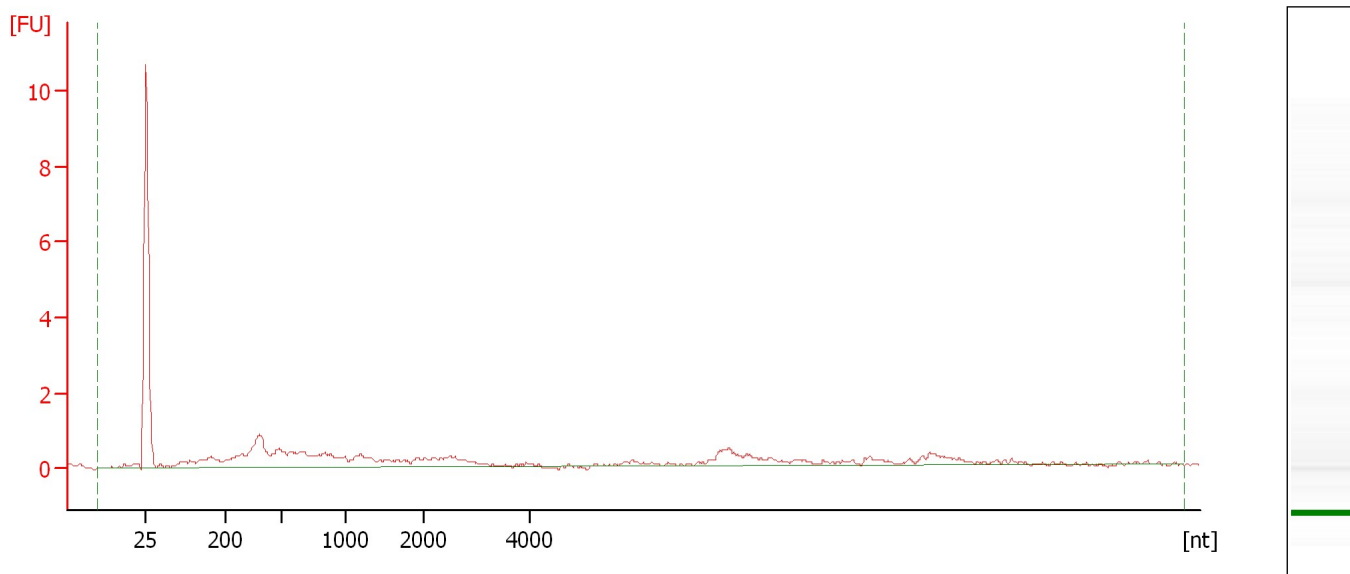
Name	Start Size [nt]	End Size [nt]	Area	% of total Area
rRNA2	539	649	1.0	1.3

Assay Class: mRNA Pico  
Data Path: C:\... bioanalyzer\2100 expert\data\2017-10-13\2017-10-13\_002.xad

Created: 10/13/2017 11:00:38 AM  
Modified: 10/13/2017 11:25:41 AM

**Electropherogram Summary Continued ...**

56 [ HiSeq\_1103 Ribodepleted RNA ]



**Overall Results for sample 11 : 56**

RNA Area:	25.9	rRNA Contamination:	0.0 %
RNA Concentration:	253 pg/μl		

Assay Class: mRNA Pico  
Data Path: C:\... bioanalyzer\2100 expert\data\2017-10-13\2017-10-13\_002.xad

Created: 10/13/2017 11:00:38 AM  
Modified: 10/13/2017 11:25:41 AM

**Gel Image**