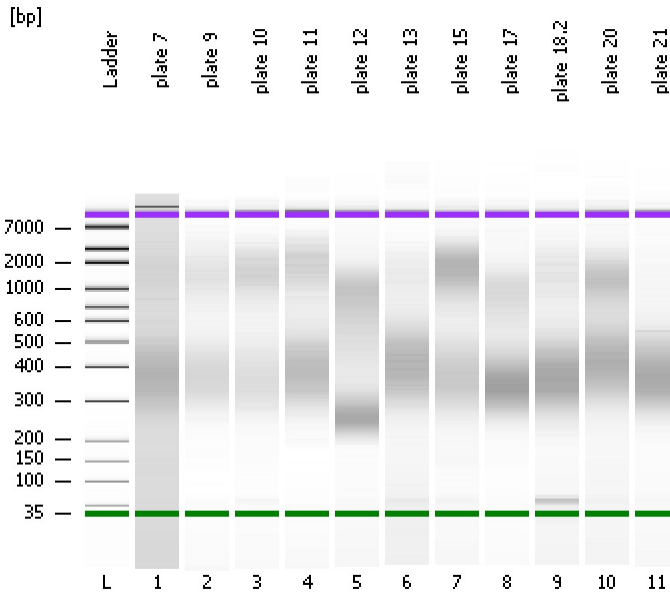


Assay Class: High Sensitivity DNA Assay
Data Path: C:\... bioanalyzer\2100 expert\data\2017-12-19\2017-12-19_001.xad

Created: 12/19/2017 11:30:37 AM
Modified: 12/19/2017 12:16:35 PM

Electrophoresis File Run Summary



Instrument Information:

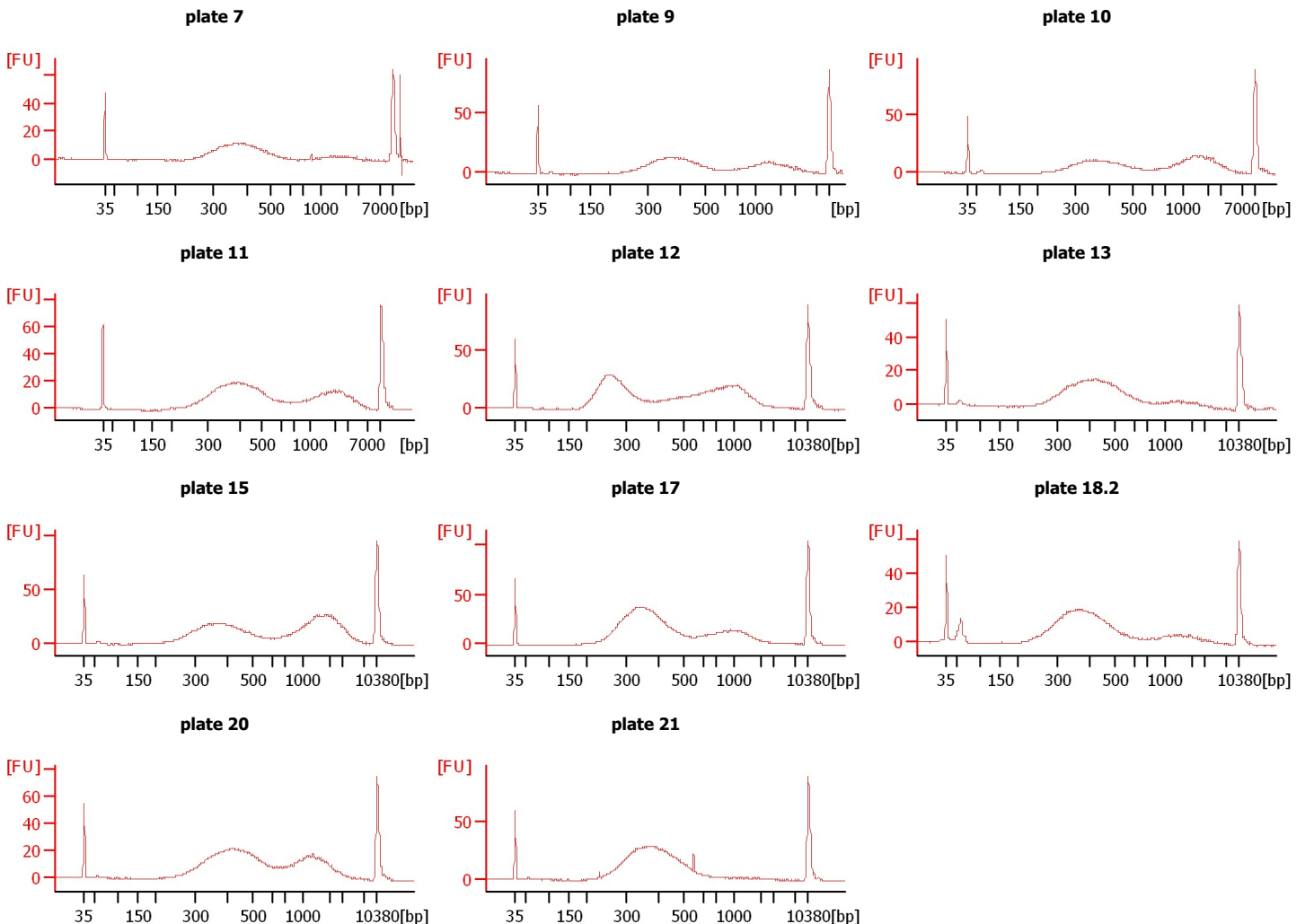
Instrument Name: DE13701086 Firmware: C.01.069
Serial#: DE13701086 Type: G2938B

Assay Information:

Assay Origin Path: C:\Program Files\Agilent\2100 bioanalyzer\2100 expert\assays\dsDNA\High Sensitivity DNA.xsy
Assay Class: High Sensitivity DNA Assay
Version: 1.03
Assay Comments: Copyright © 2003-2010 Agilent Technologies

Chip Information:

Chip Lot #:
Reagent Kit Lot #:
Chip Comments:



Assay Class: High Sensitivity DNA Assay
 Data Path: C:\... bioanalyzer\2100 expert\data\2017-12-19\2017-12-19_001.xad

Created: 12/19/2017 11:30:37 AM
 Modified: 12/19/2017 12:16:35 PM

Electrophoresis File Run Summary (Chip Summary)

Sample Name	Sample Comment	Rest. Digest	Status	Observation	Result Label	Result Color
plate 7		<input type="checkbox"/>	✓			
plate 9		<input type="checkbox"/>	✓			
plate 10		<input type="checkbox"/>	✓			
plate 11		<input type="checkbox"/>	✓			
plate 12		<input type="checkbox"/>	✓			
plate 13		<input type="checkbox"/>	✓			
plate 15		<input type="checkbox"/>	✓			
plate 17		<input type="checkbox"/>	✓			
plate 18.2		<input type="checkbox"/>	✓			
plate 20		<input type="checkbox"/>	✓			
plate 21		<input type="checkbox"/>	✓			
Ladder		<input type="checkbox"/>	✓			

Chip Lot #

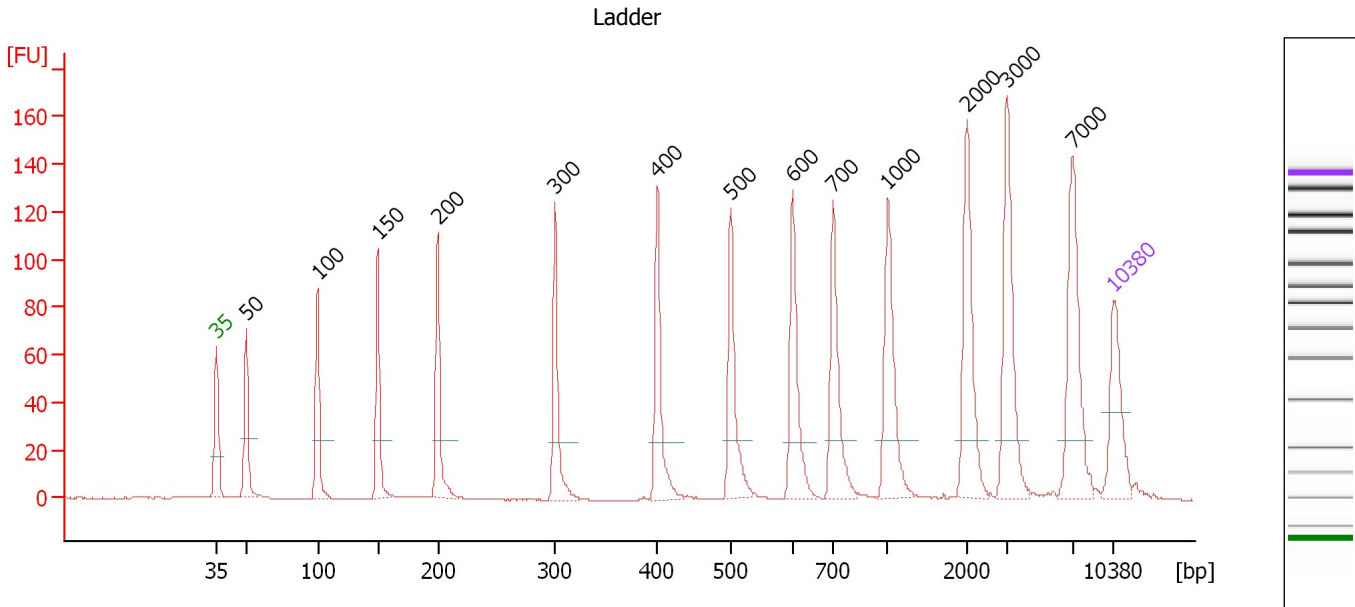
Reagent Kit Lot #

Chip Comments :

Assay Class: High Sensitivity DNA Assay
 Data Path: C:\... bioanalyzer\2100 expert\data\2017-12-19\2017-12-19_001.xad

Created: 12/19/2017 11:30:37 AM
 Modified: 12/19/2017 12:16:35 PM

Electropherogram Summary



Overall Results for Ladder

Noise: 0.2

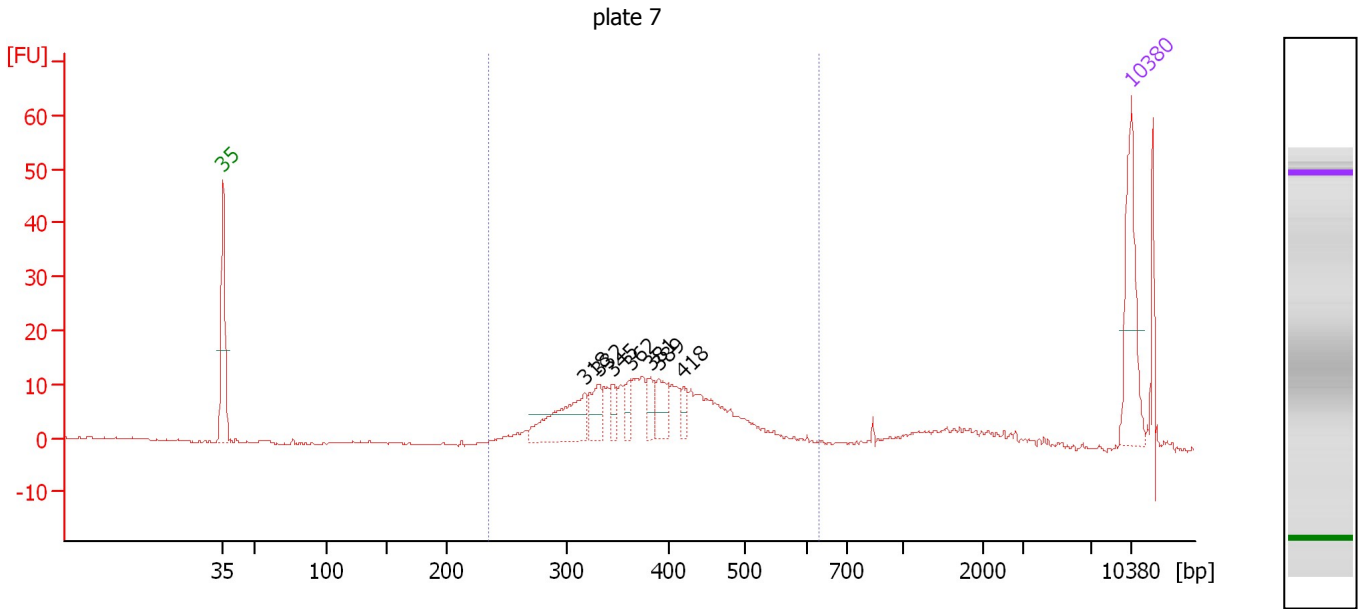
Peak table for Ladder

Peak	Size [bp]	Conc. [pg/μl]	Molarity [pmol/l]	Observations	Aligned Migration Time [s]
1	35	125.00	5,411.3	Lower Marker	43.00
2	50	150.00	4,545.5	Ladder Peak	45.33
3	100	150.00	2,272.7	Ladder Peak	50.91
4	150	150.00	1,515.2	Ladder Peak	55.61
5	200	150.00	1,136.4	Ladder Peak	60.27
6	300	150.00	757.6	Ladder Peak	69.43
7	400	150.00	568.2	Ladder Peak	77.42
8	500	150.00	454.5	Ladder Peak	83.16
9	600	150.00	378.8	Ladder Peak	87.99
10	700	150.00	324.7	Ladder Peak	91.15
11	1,000	150.00	227.3	Ladder Peak	95.40
12	2,000	150.00	113.6	Ladder Peak	101.60
13	3,000	150.00	75.8	Ladder Peak	104.72
14	7,000	150.00	32.5	Ladder Peak	109.84
15	10,380	75.00	10.9	Upper Marker	113.00

Assay Class: High Sensitivity DNA Assay
 Data Path: C:\... bioanalyzer\2100 expert\data\2017-12-19\2017-12-19_001.xad

Created: 12/19/2017 11:30:37 AM
 Modified: 12/19/2017 12:16:35 PM

Electropherogram Summary Continued ...



Overall Results for sample 1 : plate 7

Number of peaks found: 7 Corr. Area 1: 232.9
 Noise: 0.2

Peak table for sample 1 : plate 7

Peak	Size [bp]	Conc. [pg/μl]	Molarity [pmol/l]	Observations	Aligned Migration Time [s]
1	35	125.00	5,411.3	Lower Marker	43.00
2	318	89.18	424.9		70.87
3	332	34.05	155.4		71.98
4	345	18.83	82.7		73.01
5	362	19.35	80.9		74.40
6	381	19.06	75.8		75.88
7	389	34.46	134.4		76.50
8	418	13.96	50.5		78.47
9	10,380	75.00	10.9	Upper Marker	113.00

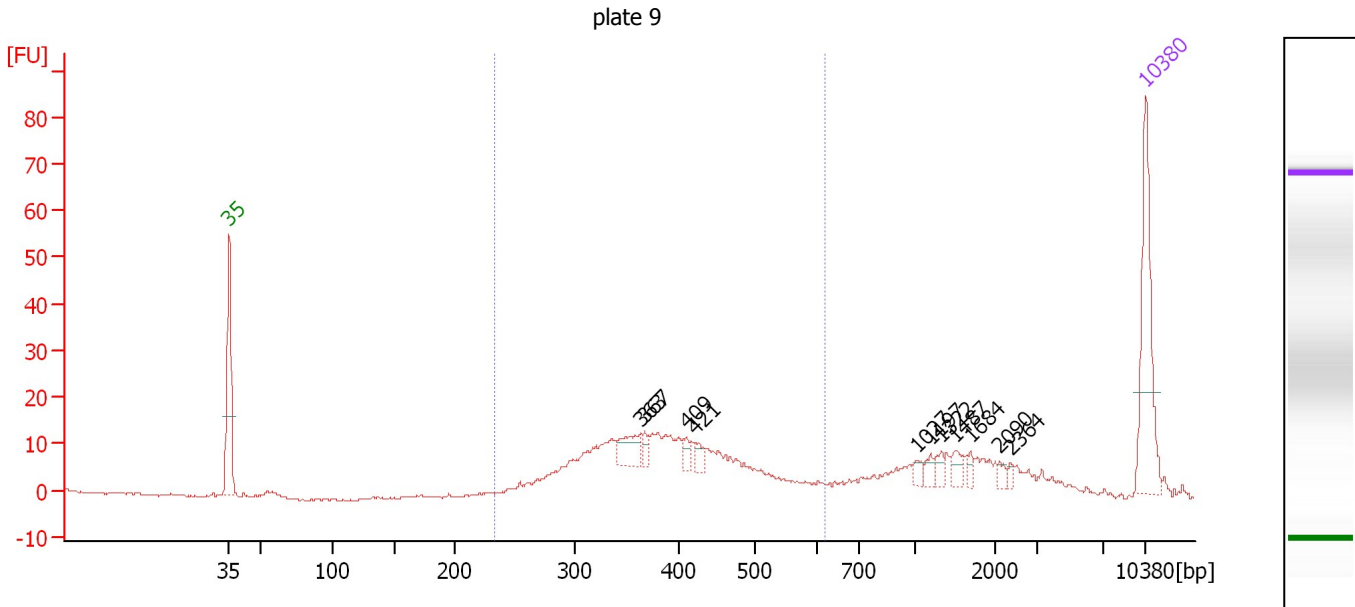
Region table for sample 1 : plate 7

From [bp]	To [bp]	Average Size [bp]	Corr. Area	Conc. [pg/μl]	Molarity [pmol/l]	Co % of lor Total	Size distribution in CV [%]
234	629	388	232.9	502.33	2,065.1	79	19.2

Assay Class: High Sensitivity DNA Assay
 Data Path: C:\... bioanalyzer\2100 expert\data\2017-12-19\2017-12-19_001.xad

Created: 12/19/2017 11:30:37 AM
 Modified: 12/19/2017 12:16:35 PM

Electropherogram Summary Continued ...



Overall Results for sample 2 : plate 9

Number of peaks found: 11 Corr. Area 1: 244.4
 Noise: 0.1

Peak table for sample 2 : plate 9

Peak	Size [bp]	Conc. [pg/μl]	Molarity [pmol/l]	Observations	Aligned Migration Time [s]
1	35	125.00	5,411.3	Lower Marker	43.00
2	363	28.46	118.8		74.46
3	367	9.17	37.9		74.78
4	409	8.11	30.0		77.92
5	421	11.23	40.4		78.61
6	1,027	6.55	9.7		95.56
7	1,197	6.66	8.4		96.62
8	1,322	7.35	8.4		97.39
9	1,487	10.11	10.3		98.41
10	1,684	4.90	4.4		99.64
11	2,090	4.43	3.2		101.88
12	2,364	3.35	2.1		102.73
13	10,380	75.00	10.9	Upper Marker	113.00

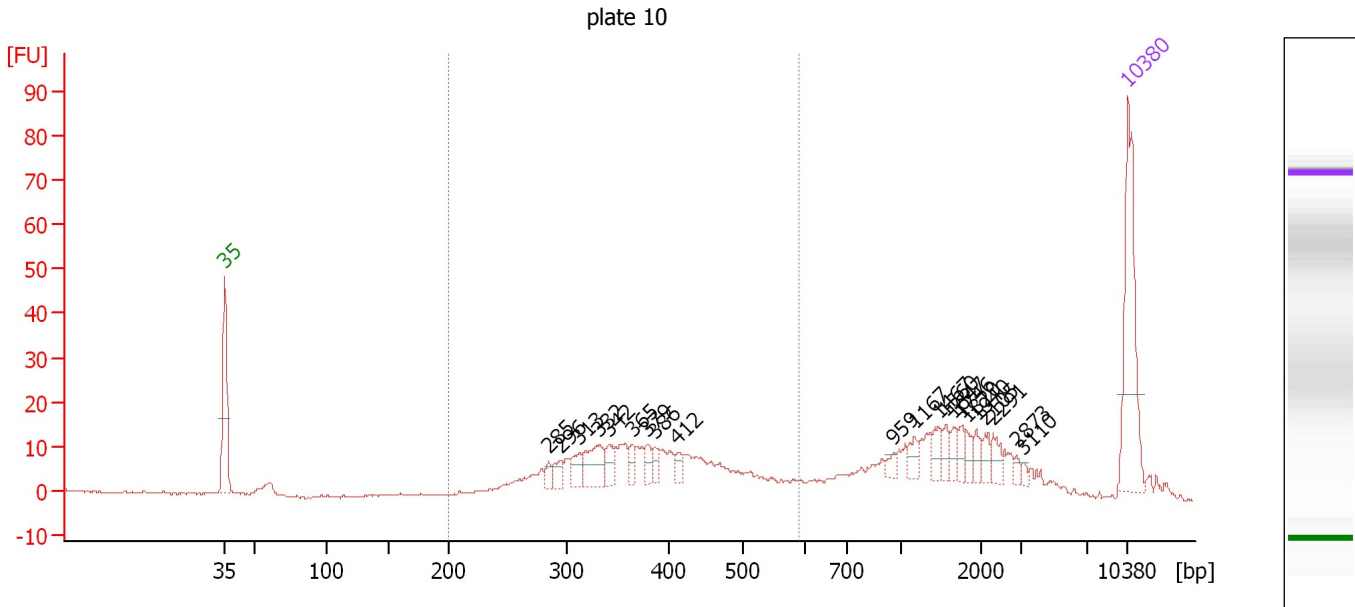
Region table for sample 2 : plate 9

From [bp]	To [bp]	Average Size [bp]	Corr. Area	Conc. [pg/μl]	Molarity [pmol/l]	Co % of Ior Total	Size distribution in CV [%]
232	617	391	244.4	421.02	1,719.4	68	19.6

Assay Class: High Sensitivity DNA Assay
 Data Path: C:\... bioanalyzer\2100 expert\data\2017-12-19\2017-12-19_001.xad

Created: 12/19/2017 11:30:37 AM
 Modified: 12/19/2017 12:16:35 PM

Electropherogram Summary Continued ...



Overall Results for sample 3 : plate 10

Number of peaks found: 21 Corr. Area 1: 238.8
 Noise: 0.2

Peak table for sample 3 : plate 10


Peak	Size [bp]	Conc. [pg/μl]	Molarity [pmol/l]	Observations	Aligned Migration Time [s]
1	35	125.00	5,411.3	Lower Marker	43.00
2	285	7.19	38.2		68.08
3	296	12.00	61.5		69.03
4	313	15.87	76.8		70.48
5	332	33.10	151.2		71.97
6	342	15.65	69.4		72.75
7	365	10.06	41.8		74.61
8	379	10.08	40.3		75.77
9	386	8.70	34.2		76.26
10	412	6.92	25.5		78.08
11	959	5.31	8.4		94.82
12	1,167	8.84	11.5		96.43
13	1,467	10.76	11.1		98.29
14	1,560	8.70	8.4		98.87
15	1,647	7.98	7.3		99.40
16	1,746	7.43	6.4		100.02
17	1,820	6.62	5.5		100.48
18	1,940	8.23	6.4		101.22
19	2,105	7.46	5.4		101.93
20	2,291	9.47	6.3		102.50
21	2,873	3.36	1.8		104.32
22	3,110	2.53	1.2		104.86
23	10,380	75.00	10.9	Upper Marker	113.00

Assay Class: High Sensitivity DNA Assay
Data Path: C:\... bioanalyzer\2100 expert\data\2017-12-19\2017-12-19_001.xad

Created: 12/19/2017 11:30:37 AM
Modified: 12/19/2017 12:16:35 PM

Electropherogram Summary Continued ...

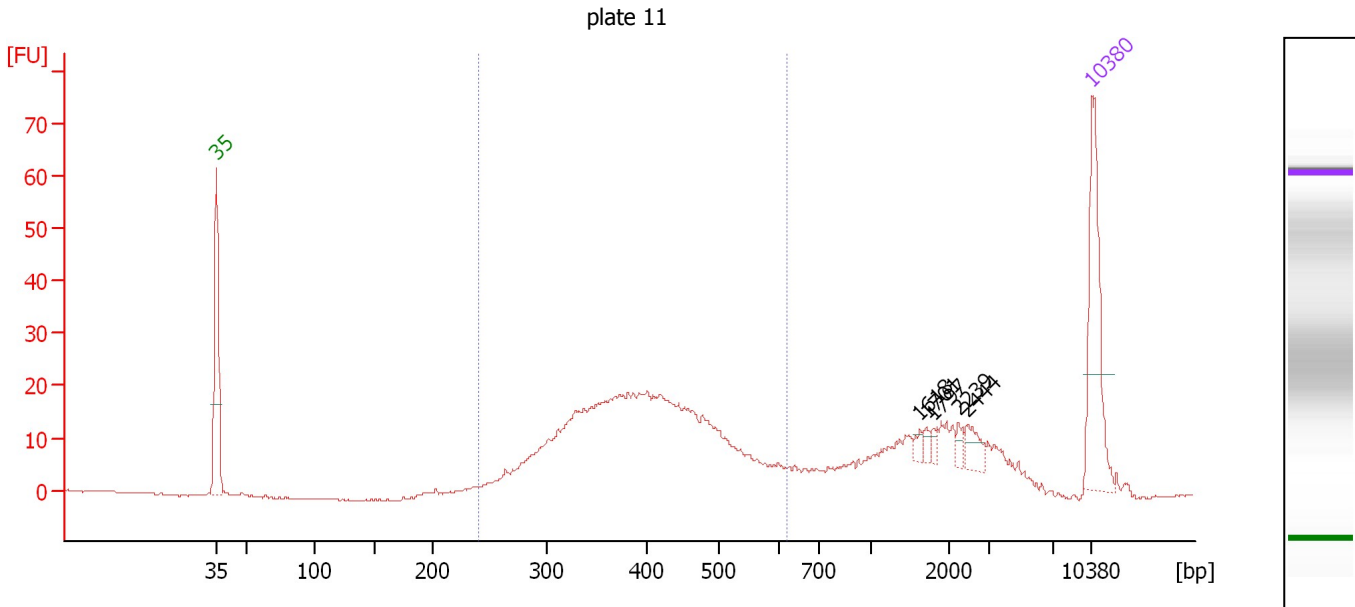
... Region table for sample 3 : plate 10

From [bp]	To [bp]	Average Size [bp]	Corr. Area	Conc. [pg/ μ l]	Molarity [pmol/l]	Co % of lor Total	Size distribution in CV [%]
200	590	384	238.8	362.94	1,526.4	 53	21.1

Assay Class: High Sensitivity DNA Assay
 Data Path: C:\... bioanalyzer\2100 expert\data\2017-12-19\2017-12-19_001.xad

Created: 12/19/2017 11:30:37 AM
 Modified: 12/19/2017 12:16:35 PM

Electropherogram Summary Continued ...



Overall Results for sample 4 : plate 11

Number of peaks found: 5 Corr. Area 1: 388.6
 Noise: 0.2

Peak table for sample 4 : plate 11

Peak	Size [bp]	Conc. [pg/μl]	Molarity [pmol/l]	Observations	Aligned Migration Time [s]
1	35	125.00	5,411.3	Lower Marker	43.00
2	1,618	4.90	4.6		99.23
3	1,701	4.59	4.1		99.74
4	1,797	4.43	3.7		100.34
5	2,239	5.71	3.9		102.34
6	2,444	12.48	7.7		102.98
7	10,380	75.00	10.9	Upper Marker	113.00

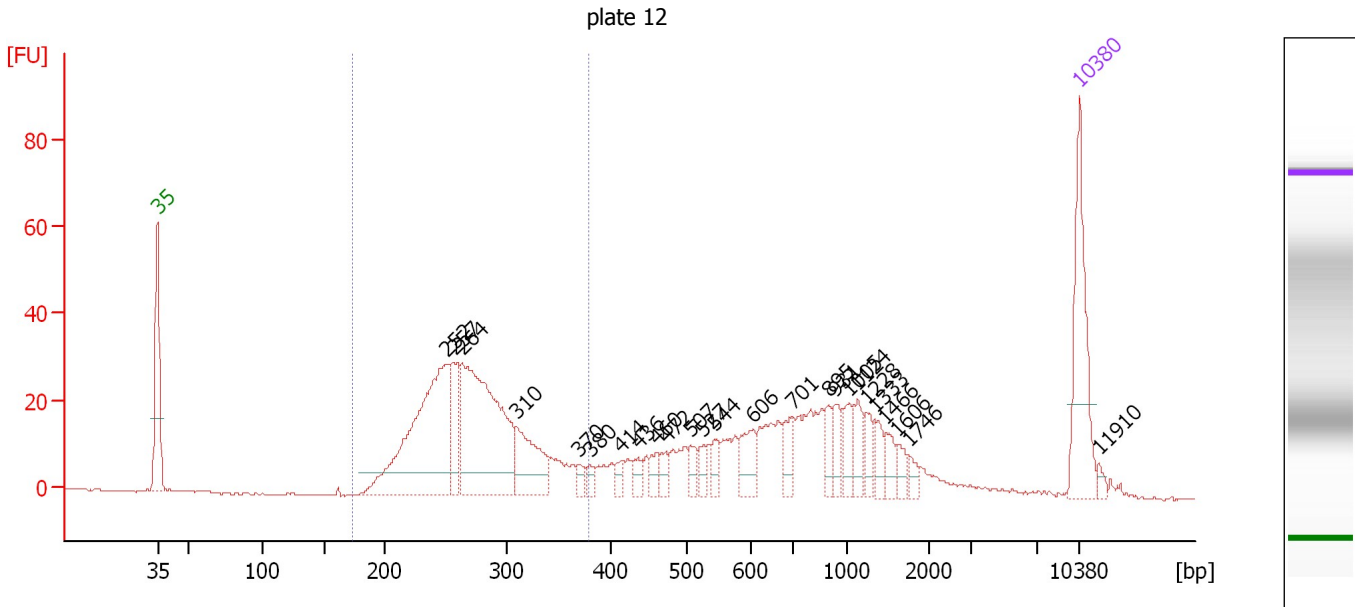
Region table for sample 4 : plate 11

From [bp]	To [bp]	Average Size [bp]	Corr. Area	Conc. [pg/μl]	Molarity [pmol/l]	Co % of lor Total	Size distribution in CV [%]
240	618	404	388.6	625.29	2,483.6	69	20.2

Assay Class: High Sensitivity DNA Assay
 Data Path: C:\... bioanalyzer\2100 expert\data\2017-12-19\2017-12-19_001.xad

Created: 12/19/2017 11:30:37 AM
 Modified: 12/19/2017 12:16:35 PM

Electropherogram Summary Continued ...



Overall Results for sample 5 : plate 12

Number of peaks found: 25 Corr. Area 1: 410.7
 Noise: 0.2

Peak table for sample 5 : plate 12

Peak	Size [bp]	Conc. [pg/μl]	Molarity [pmol/l]	Observations	Aligned Migration Time [s]
1	35	125.00	5,411.3	Lower Marker	43.00
2	252	249.55	1,502.4		65.00
3	257	44.07	259.9		65.48
4	264	244.97	1,408.5		66.09
5	310	68.51	334.5		70.25
6	370	7.71	31.6		74.98
7	380	7.90	31.5		75.81
8	414	9.18	33.6		78.20
9	436	9.78	34.0		79.50
10	460	12.26	40.3		80.89
11	472	11.93	38.2		81.58
12	507	13.23	39.5		83.49
13	527	11.27	32.4		84.44
14	544	13.95	38.9		85.27
15	606	29.40	73.5		88.18
16	701	21.47	46.4		91.17
17	895	15.23	25.8		93.91
18	931	19.70	32.0		94.43
19	1,005	20.14	30.4		95.42
20	1,124	18.53	25.0		96.16
21	1,228	14.38	17.7		96.81
22	1,333	14.22	16.2		97.46
23	1,466	12.98	13.4		98.29
24	1,606	10.22	9.6		99.16
25	1,746	7.56	6.6		100.02

Assay Class: High Sensitivity DNA Assay
Data Path: C:\... bioanalyzer\2100 expert\data\2017-12-19\2017-12-19_001.xad

Created: 12/19/2017 11:30:37 AM
Modified: 12/19/2017 12:16:35 PM

Electropherogram Summary Continued ...**... Peak table for sample 5 : plate 12**

Peak	Size [bp]	Conc. [pg/ μ l]	Molarity [pmol/l]	Observations	Aligned Migration Time [s]
26	10,380	75.00	10.9	Upper Marker	113.00
27	11,910	0.00	0.0		114.43

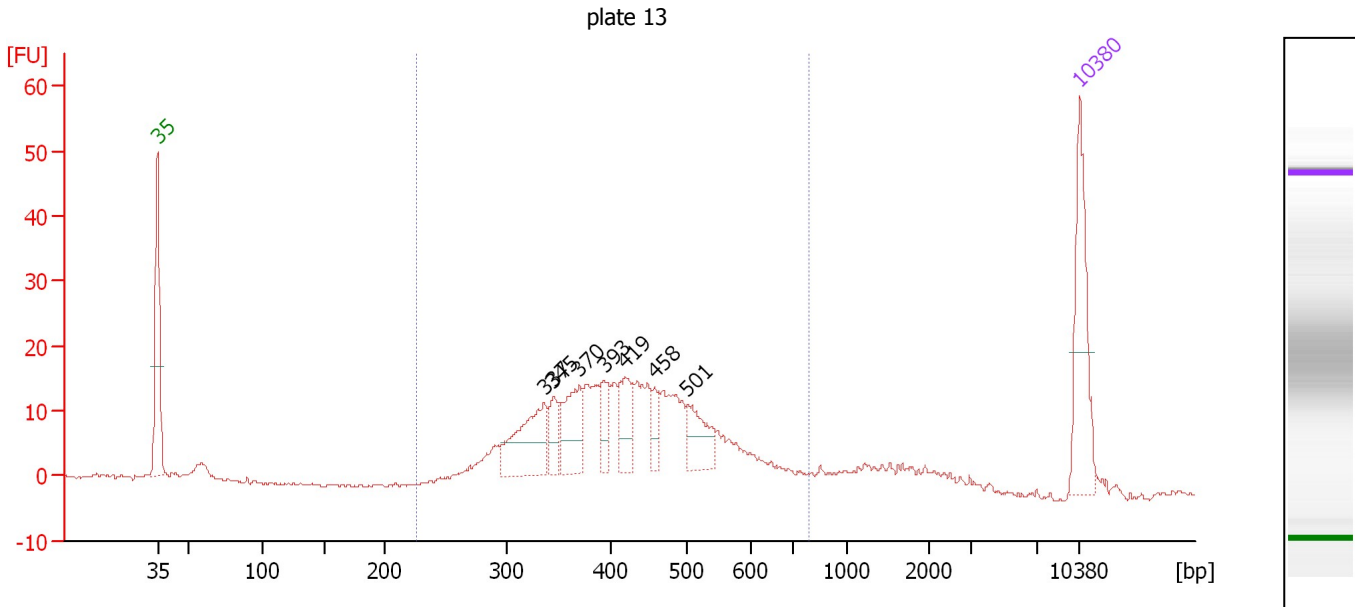
Region table for sample 5 : plate 12

From [bp]	To [bp]	Average Size [bp]	Corr. Area	Conc. [pg/ μ l]	Molarity [pmol/l]	Co % of lor Total	Size distribution in CV [%]
173	379	273	410.7	645.19	3,655.3	49	14.9

Assay Class: High Sensitivity DNA Assay
 Data Path: C:\... bioanalyzer\2100 expert\data\2017-12-19\2017-12-19_001.xad

Created: 12/19/2017 11:30:37 AM
 Modified: 12/19/2017 12:16:35 PM

Electropherogram Summary Continued ...



Overall Results for sample 6 : plate 13

Number of peaks found: 7 Corr. Area 1: 335.4
 Noise: 0.2

Peak table for sample 6 : plate 13

Peak	Size [bp]	Conc. [pg/μl]	Molarity [pmol/l]	Observations	Aligned Migration Time [s]
1	35	125.00	5,411.3	Lower Marker	43.00
2	337	84.89	382.2		72.35
3	345	26.91	118.0		73.06
4	370	57.07	233.8		75.01
5	393	24.95	96.2		76.87
6	419	37.48	135.5		78.51
7	458	18.25	60.4		80.73
8	501	42.05	127.2		83.21
9	10,380	75.00	10.9	Upper Marker	113.00

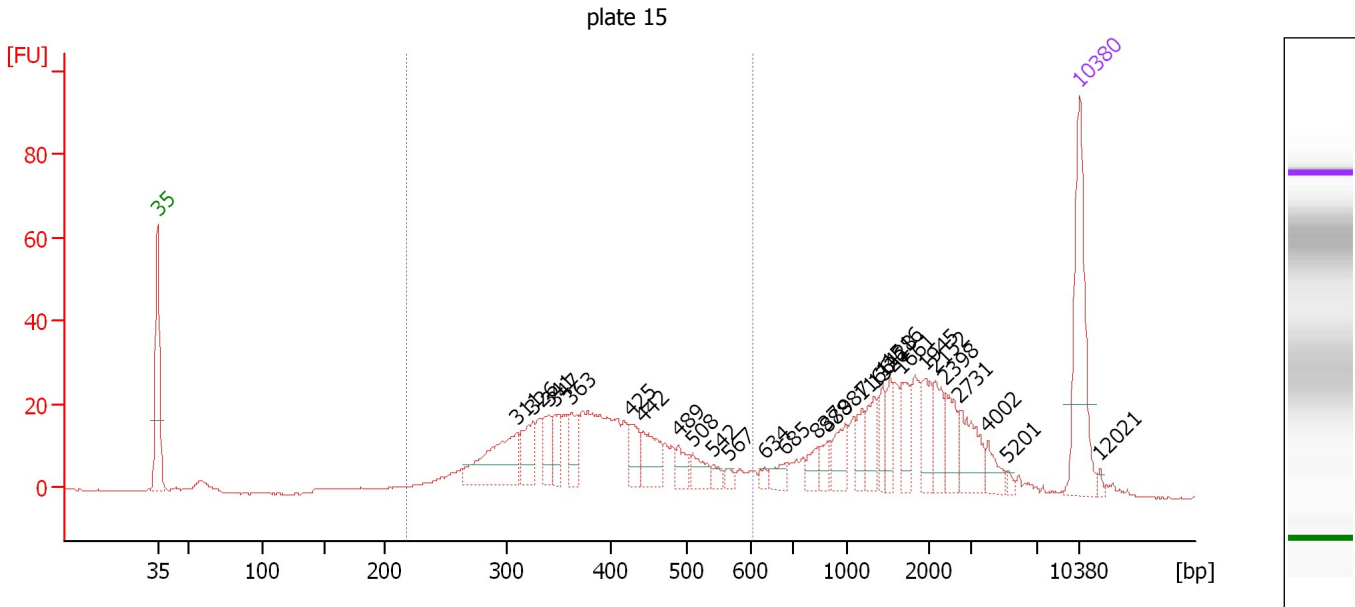
Region table for sample 6 : plate 13

From [bp]	To [bp]	Average Size [bp]	Corr. Area	Conc. [pg/μl]	Molarity [pmol/l]	Co % of Ior Total	Size distribution in CV [%]
226	795	430	335.4	676.44	2,552.9	88	22.6

Assay Class: High Sensitivity DNA Assay
 Data Path: C:\... bioanalyzer\2100 expert\data\2017-12-19\2017-12-19_001.xad

Created: 12/19/2017 11:30:37 AM
 Modified: 12/19/2017 12:16:35 PM

Electropherogram Summary Continued ...



Overall Results for sample 7 : plate 15

Number of peaks found: 28 Corr. Area 1: 406.0
 Noise: 0.2

Peak table for sample 7 : plate 15

Peak	Size [bp]	Conc. [pg/μl]	Molarity [pmol/l]	Observations	Aligned Migration Time [s]
1	35	125.00	5,411.3	Lower Marker	43.00
2	311	73.70	359.5		70.28
3	326	32.35	150.4		71.50
4	341	23.76	105.5		72.72
5	347	20.89	91.3		73.17
6	363	24.76	103.5		74.43
7	425	21.09	75.2		78.86
8	442	33.71	115.7		79.81
9	489	14.13	43.8		82.52
10	508	15.71	46.8		83.55
11	542	6.70	18.7		85.18
12	567	4.50	12.0		86.40
13	634	4.94	11.8		89.06
14	685	10.99	24.3		90.69
15	837	11.63	21.1		93.08
16	888	11.23	19.2		93.81
17	987	21.82	33.5		95.21
18	1,166	15.32	19.9		96.43
19	1,326	21.04	24.0		97.42
20	1,428	15.13	16.0		98.05
21	1,516	16.06	16.1		98.59
22	1,661	21.80	19.9		99.50
23	1,945	22.26	17.3		101.26
24	2,152	21.76	15.3		102.07
25	2,398	21.05	13.3		102.84

Assay Class: High Sensitivity DNA Assay
 Data Path: C:\... bioanalyzer\2100 expert\data\2017-12-19\2017-12-19_001.xad

Created: 12/19/2017 11:30:37 AM
 Modified: 12/19/2017 12:16:35 PM

Electropherogram Summary Continued ...

... Peak table for sample 7 : plate 15

Peak	Size [bp]	Conc. [pg/μl]	Molarity [pmol/l]	Observations	Aligned Migration Time [s]
26	2,731	29.59	16.4		103.88
27	4,002	12.71	4.8		106.00
28	5,201	2.86	0.8		107.54
29	10,380	75.00	10.9	Upper Marker	113.00
30	12,021	0.00	0.0		114.54

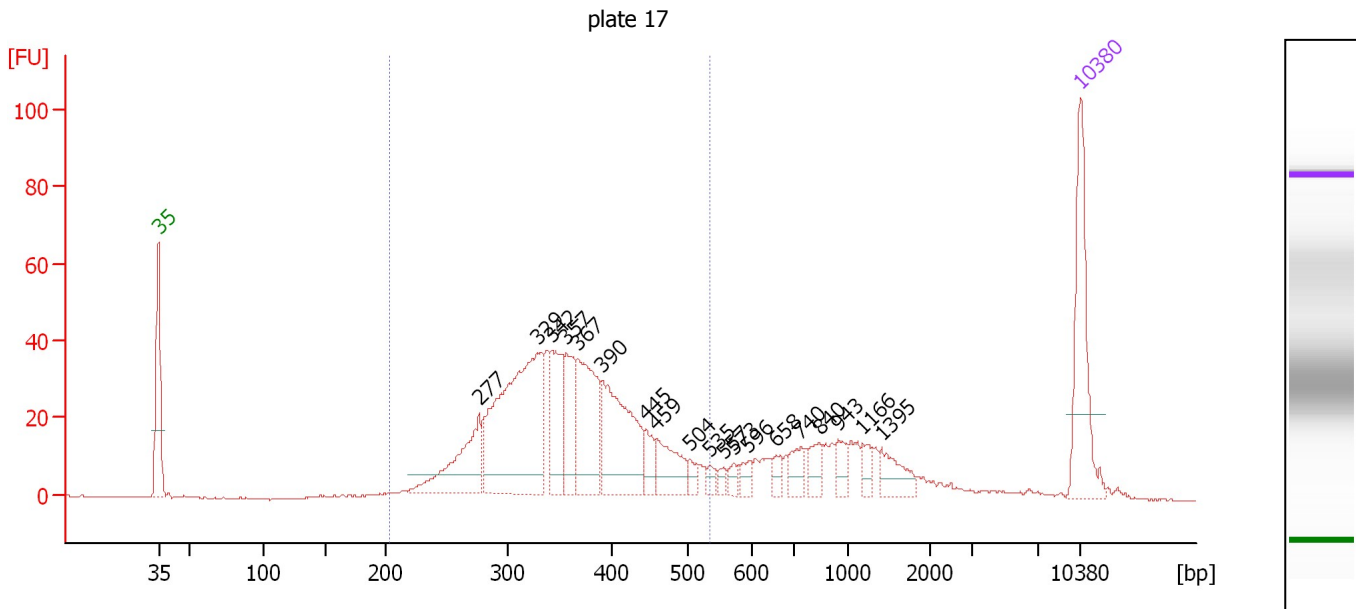
Region table for sample 7 : plate 15

From [bp]	To [bp]	Average Size [bp]	Corr. Area	Conc. [pg/μl]	Molarity [pmol/l]	Co % of lor Total	Size distribution in CV [%]
218	609	389	406.0	551.74	2,293.3	52	21.5

Assay Class: High Sensitivity DNA Assay
 Data Path: C:\... bioanalyzer\2100 expert\data\2017-12-19\2017-12-19_001.xad

Created: 12/19/2017 11:30:37 AM
 Modified: 12/19/2017 12:16:35 PM

Electropherogram Summary Continued ...



Overall Results for sample 8 : plate 17

Number of peaks found: 19 Corr. Area 1: 680.9
 Noise: 0.2

Peak table for sample 8 : plate 17

Peak	Size [bp]	Conc. [pg/μl]	Molarity [pmol/l]	Observations	Aligned Migration Time [s]
1	35	125.00	5,411.3	Lower Marker	43.00
2	277	88.31	482.4		67.36
3	329	236.87	1,092.5		71.71
4	342	64.12	283.8		72.80
5	357	52.45	222.8		73.95
6	367	95.70	395.2		74.77
7	390	116.50	452.2		76.65
8	445	17.90	61.0		79.99
9	459	40.46	133.5		80.82
10	504	8.82	26.6		83.33
11	535	7.17	20.3		84.84
12	557	5.77	15.7		85.90
13	573	7.52	19.9		86.68
14	596	8.65	22.0		87.77
15	658	9.80	22.5		89.83
16	740	17.61	36.1		91.71
17	840	16.99	30.6		93.13
18	943	13.67	22.0		94.60
19	1,166	10.94	14.2		96.43
20	1,395	23.31	25.3		97.85
21	10,380	75.00	10.9	Upper Marker	113.00

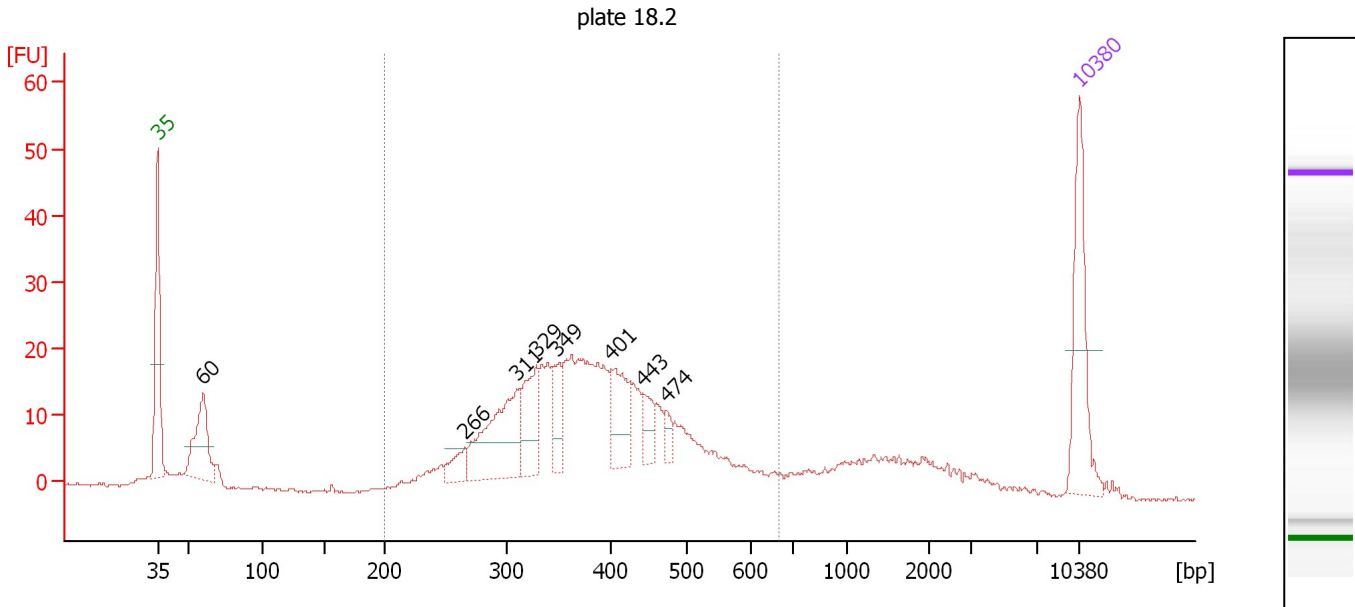
Region table for sample 8 : plate 17

From [bp]	To [bp]	Average Size [bp]	Corr. Area	Conc. [pg/μl]	Molarity [pmol/l]	Co % of lor Total	Size distribution in CV [%]
202	535	359	680.9	833.09	3,688.0	74	18.5

Assay Class: High Sensitivity DNA Assay
 Data Path: C:\... bioanalyzer\2100 expert\data\2017-12-19\2017-12-19_001.xad

Created: 12/19/2017 11:30:37 AM
 Modified: 12/19/2017 12:16:35 PM

Electropherogram Summary Continued ...



Overall Results for sample 9 : plate 18.2

Number of peaks found: 8 Corr. Area 1: 409.3
 Noise: 0.2

Peak table for sample 9 : plate 18.2

Peak	Size [bp]	Conc. [pg/μl]	Molarity [pmol/l]	Observations	Aligned Migration Time [s]
1	35	125.00	5,411.3	Lower Marker	43.00
2	60	92.07	2,313.5		46.48
3	266	23.50	133.7		66.35
4	311	120.44	587.2		70.29
5	329	63.04	290.3		71.75
6	349	37.46	162.6		73.35
7	401	53.80	203.3		77.47
8	443	23.39	80.0		79.90
9	474	12.13	38.8		81.64
10	10,380	75.00	10.9	Upper Marker	113.00

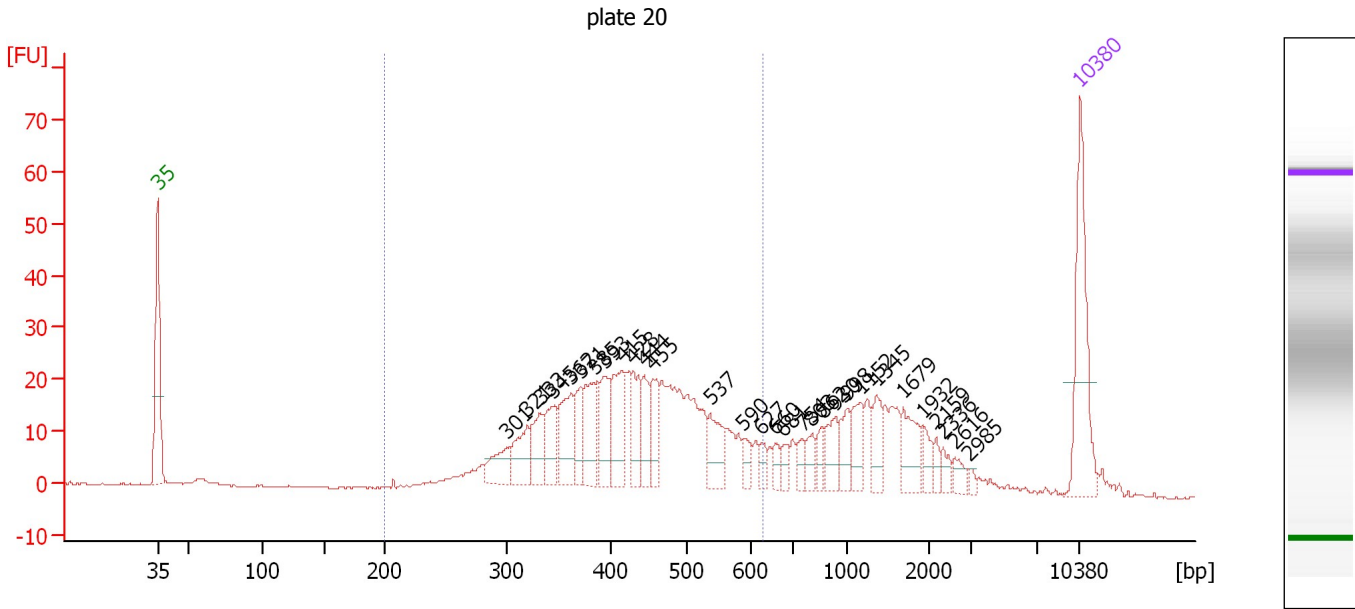
Region table for sample 9 : plate 18.2

From [bp]	To [bp]	Average Size [bp]	Corr. Area	Conc. [pg/μl]	Molarity [pmol/l]	Co % of lor Total	Size distribution in CV [%]
200	670	389	409.3	856.43	3,569.8	77	22.4

Assay Class: High Sensitivity DNA Assay
 Data Path: C:\... bioanalyzer\2100 expert\data\2017-12-19\2017-12-19_001.xad

Created: 12/19/2017 11:30:37 AM
 Modified: 12/19/2017 12:16:35 PM

Electropherogram Summary Continued ...



Overall Results for sample 10 : plate 20

Number of peaks found: 30 Corr. Area 1: 463.7
 Noise: 0.2

Peak table for sample 10 : plate 20

Peak	Size [bp]	Conc. [pg/μl]	Molarity [pmol/l]	Observations	Aligned Migration Time [s]
1	35	125.00	5,411.3	Lower Marker	43.00
2	301	31.20	157.0		69.51
3	321	37.70	178.2		71.07
4	333	32.91	149.6		72.09
5	345	36.89	162.1		73.01
6	362	51.61	216.0		74.39
7	371	26.88	109.7		75.12
8	385	51.40	202.5		76.18
9	393	40.03	154.2		76.87
10	415	54.06	197.6		78.25
11	428	33.04	116.9		79.04
12	444	29.69	101.3		79.96
13	455	33.04	109.9		80.60
14	537	34.30	96.9		84.93
15	590	11.11	28.5		87.50
16	627	9.40	22.7		88.84
17	660	9.39	21.5		89.90
18	681	9.51	21.2		90.54
19	754	10.98	22.1		91.92
20	803	13.95	26.3		92.61
21	862	11.59	20.4		93.44
22	930	21.57	35.1		94.41
23	998	19.01	28.9		95.37
24	1,152	24.01	31.6		96.34
25	1,345	20.95	23.6		97.54

Assay Class: High Sensitivity DNA Assay
 Data Path: C:\... bioanalyzer\2100 expert\data\2017-12-19\2017-12-19_001.xad

Created: 12/19/2017 11:30:37 AM
 Modified: 12/19/2017 12:16:35 PM

Electropherogram Summary Continued ...

... Peak table for sample 10 : plate 20

Peak	Size [bp]	Conc. [pg/ μ l]	Molarity [pmol/l]	Observations	Aligned Migration Time [s]
26	1,679	30.07	27.1		99.61
27	1,932	10.87	8.5		101.17
28	2,159	7.37	5.2		102.09
29	2,336	7.93	5.1		102.64
30	2,616	8.03	4.7		103.52
31	2,985	3.42	1.7		104.67
32	10,380	75.00	10.9	Upper Marker	113.00

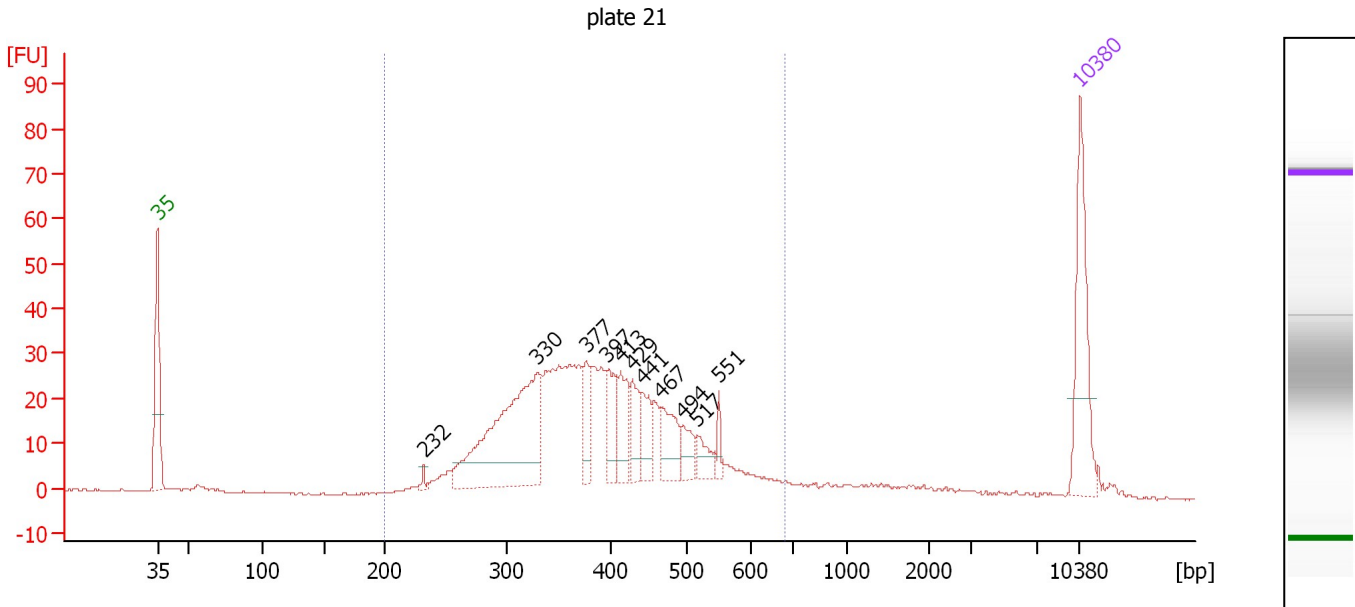
Region table for sample 10 : plate 20

From [bp]	To [bp]	Average Size [bp]	Corr. Area	Conc. [pg/ μ l]	Molarity [pmol/l]	Co % of lor Total	Size distribution in CV [%]
200	629	425	463.7	818.81	3,118.1	65	20.7

Assay Class: High Sensitivity DNA Assay
 Data Path: C:\... bioanalyzer\2100 expert\data\2017-12-19\2017-12-19_001.xad

Created: 12/19/2017 11:30:37 AM
 Modified: 12/19/2017 12:16:35 PM

Electropherogram Summary Continued ...



Overall Results for sample 11 : plate 21

Number of peaks found: 11 Corr. Area 1: 597.8
 Noise: 0.2

Peak table for sample 11 : plate 21

Peak	Size [bp]	Conc. [pg/μl]	Molarity [pmol/l]	Observations	Aligned Migration Time [s]
1	35	125.00	5,411.3	Lower Marker	43.00
2	232	4.69	30.7		63.20
3	330	232.15	1,066.0		71.82
4	377	35.82	144.1		75.56
5	397	42.70	163.0		77.17
6	413	41.89	153.6		78.18
7	429	32.22	113.9		79.06
8	441	28.34	97.3		79.80
9	467	39.17	127.0		81.27
10	494	22.50	69.0		82.84
11	517	18.18	53.2		83.99
12	551	9.34	25.7		85.61
13	10,380	75.00	10.9	Upper Marker	113.00

Region table for sample 11 : plate 21

From [bp]	To [bp]	Average Size [bp]	Corr. Area	Conc. [pg/μl]	Molarity [pmol/l]	Co % of lor Total	Size distribution in CV [%]
200	682	394	597.8	938.27	3,856.7	93	22.0

Assay Class: High Sensitivity DNA Assay
Data Path: C:\... bioanalyzer\2100 expert\data\2017-12-19\2017-12-19_001.xad

Created: 12/19/2017 11:30:37 AM
Modified: 12/19/2017 12:16:35 PM

Gel Image

