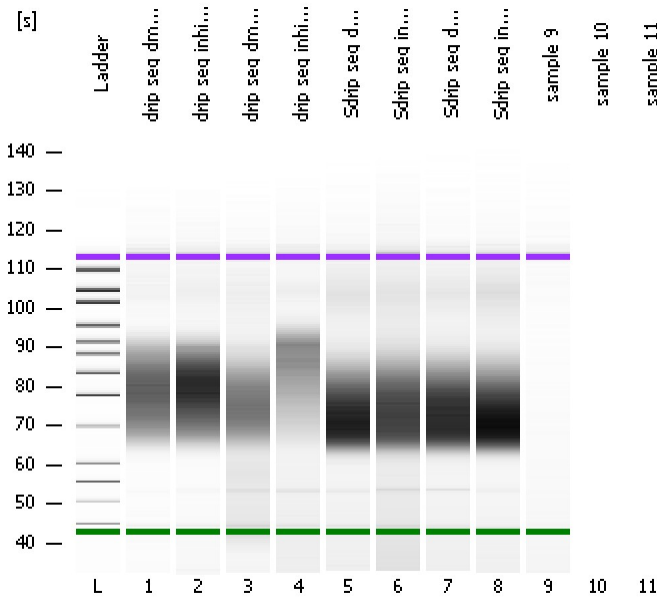


Assay Class: High Sensitivity DNA Assay
Data Path: C:\... bioanalyzer\2100 expert\data\2017-12-20\2017-12-20_003.xad

Created: 12/20/2017 3:14:13 PM
Modified: 12/20/2017 3:49:47 PM

Electrophoresis File Run Summary



Instrument Information:

Instrument Name: DE13701086 Firmware: C.01.069
Serial#: DE13701086 Type: G2938B

Assay Information:

Assay Origin Path: C:\Program Files\Agilent\2100 bioanalyzer\2100 expert\assays\dsDNA\High Sensitivity DNA.xsy
Assay Class: High Sensitivity DNA Assay
Version: 1.03
Assay Comments: Copyright © 2003-2010 Agilent Technologies

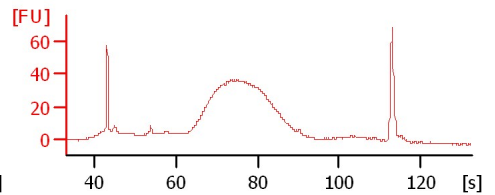
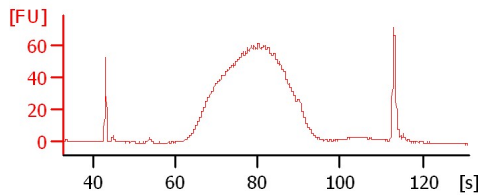
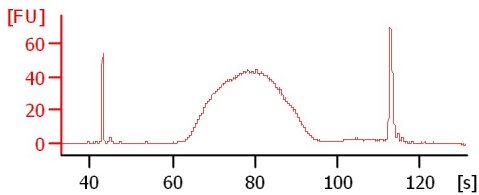
Chip Information:

Chip Lot #:
Reagent Kit Lot #:
Chip Comments:

drip seq dms 1day I4

drip seq inh 1day I5

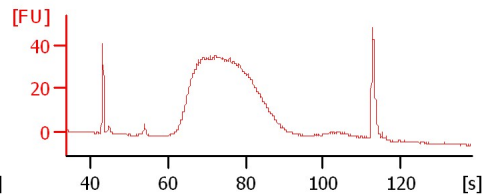
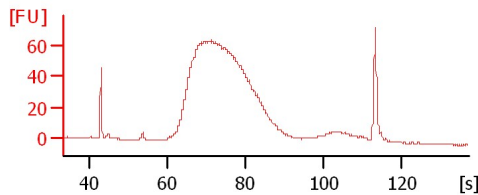
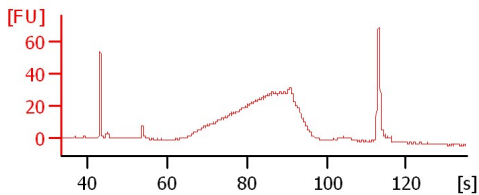
drip seq dms 3days I6



drip seq inh 3days I7

Sdrip seq dms 1day I12

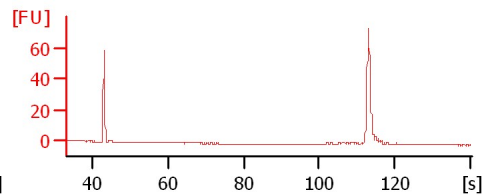
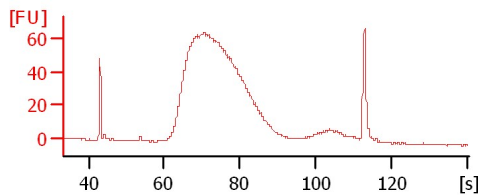
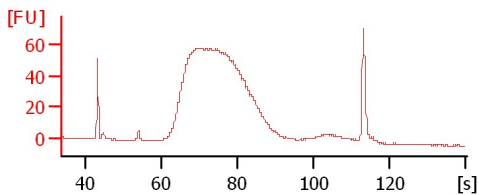
Sdrip seq inh 1day I13



Sdrip seq dms 3days I14

Sdrip seq inh 3days I15

sample 9



Assay Class: High Sensitivity DNA Assay
 Data Path: C:\... bioanalyzer\2100 expert\data\2017-12-20\2017-12-20_003.xad

Created: 12/20/2017 3:14:13 PM
 Modified: 12/20/2017 3:49:47 PM

Electrophoresis File Run Summary (Chip Summary)

Sample Name	Sample Comment	Rest. Digest	Status	Observation	Result Label	Result Color
drip seq dms0 1day I4		<input type="checkbox"/>	✓			
drip seq inhib 1day I5		<input type="checkbox"/>	✓			
drip seq dms0 3days I6		<input type="checkbox"/>	✓			
drip seq inhib 3days I7		<input type="checkbox"/>	✓			
Sdrip seq dms0 1day I12		<input type="checkbox"/>	✓			
Sdrip seq inhib 1day I13		<input type="checkbox"/>	✓			
Sdrip seq dms0 3days I14		<input type="checkbox"/>	✓			
Sdrip seq inhib 3days I15		<input type="checkbox"/>	✓			
sample 9		<input type="checkbox"/>	✓			
sample 10		<input type="checkbox"/>				
sample 11		<input type="checkbox"/>				
Ladder		<input type="checkbox"/>	✓			

Chip Lot #

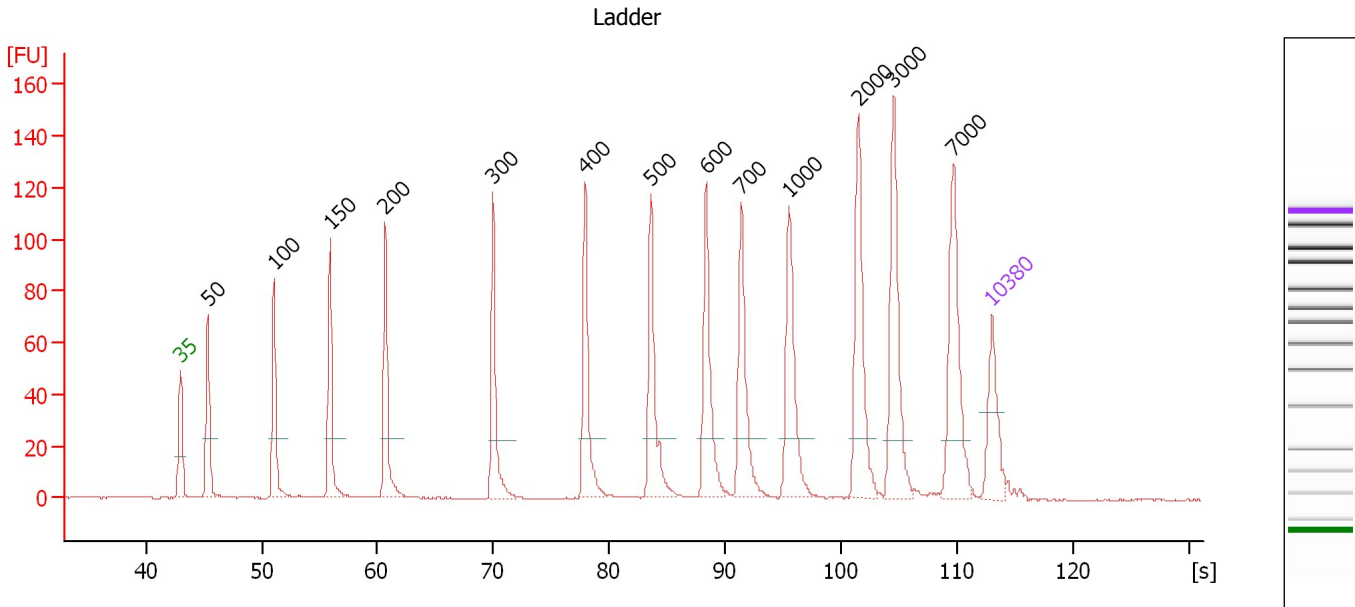
Reagent Kit Lot #

Chip Comments :

Assay Class: High Sensitivity DNA Assay
 Data Path: C:\... bioanalyzer\2100 expert\data\2017-12-20\2017-12-20_003.xad

Created: 12/20/2017 3:14:13 PM
 Modified: 12/20/2017 3:49:47 PM

Electropherogram Summary



Overall Results for Ladder

Noise: 0.2

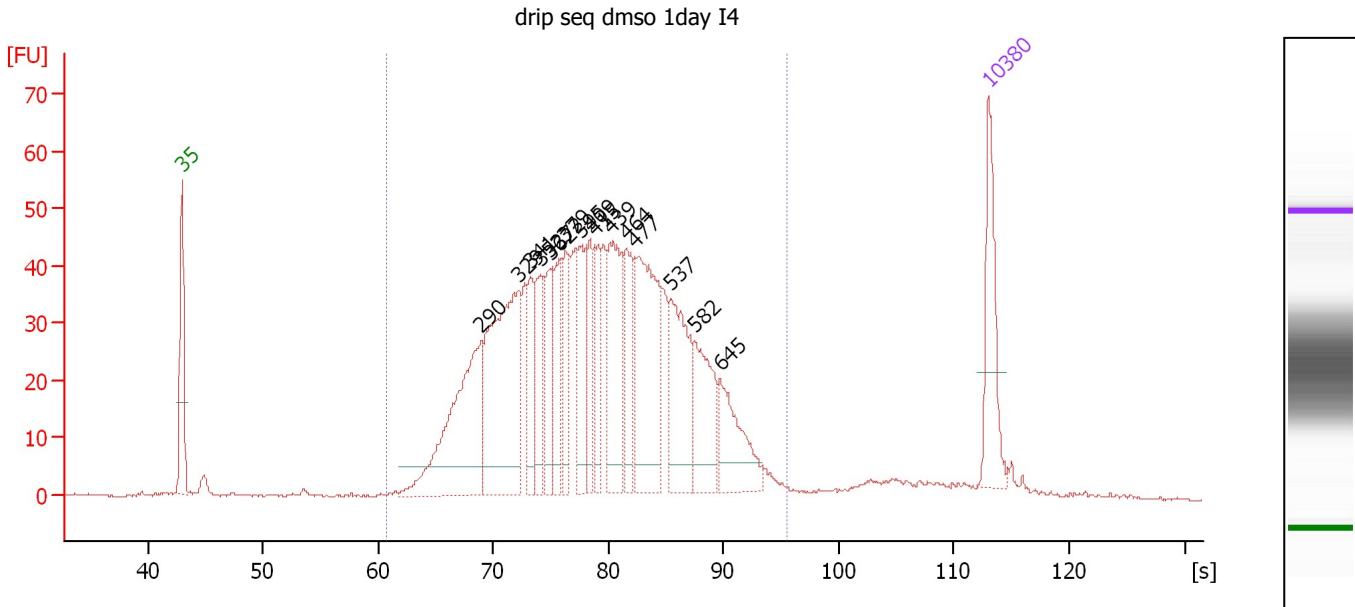
Peak table for Ladder

Peak	Size [bp]	Conc. [pg/μl]	Molarity [pmol/l]	Observations	Aligned Migration Time [s]
1	35	125.00	5,411.3	Lower Marker	43.00
2	50	150.00	4,545.5	Ladder Peak	45.36
3	100	150.00	2,272.7	Ladder Peak	51.06
4	150	150.00	1,515.2	Ladder Peak	55.93
5	200	150.00	1,136.4	Ladder Peak	60.70
6	300	150.00	757.6	Ladder Peak	69.96
7	400	150.00	568.2	Ladder Peak	77.93
8	500	150.00	454.5	Ladder Peak	83.58
9	600	150.00	378.8	Ladder Peak	88.35
10	700	150.00	324.7	Ladder Peak	91.37
11	1,000	150.00	227.3	Ladder Peak	95.53
12	2,000	150.00	113.6	Ladder Peak	101.51
13	3,000	150.00	75.8	Ladder Peak	104.52
14	7,000	150.00	32.5	Ladder Peak	109.71
15	10,380	75.00	10.9	Upper Marker	113.00

Assay Class: High Sensitivity DNA Assay
 Data Path: C:\... bioanalyzer\2100 expert\data\2017-12-20\2017-12-20_003.xad

Created: 12/20/2017 3:14:13 PM
 Modified: 12/20/2017 3:49:47 PM

Electropherogram Summary Continued ...



Overall Results for sample 1 : drip seq dms0 1day I4

Number of peaks found: 16 Corr. Area 1: 1,183.5
 Noise: 0.2

Peak table for sample 1 : drip seq dms0 1day I4

Peak	Size [bp]	Conc. [pg/μl]	Molarity [pmol/l]	Observations	Aligned Migration Time [s]
1	35	125.00	5,411.3	Lower Marker	43.00
2	290	259.44	1,357.0		69.01
3	329	296.59	1,366.2		72.27
4	341	66.94	297.7		73.20
5	352	70.55	303.4		74.13
6	362	66.19	276.8		74.92
7	372	76.50	311.4		75.72
8	379	68.54	273.8		76.28
9	395	87.29	334.8		77.53
10	409	67.34	249.7		78.42
11	415	61.75	225.3		78.79
12	439	143.75	496.0		80.14
13	464	75.66	247.1		81.54
14	477	209.49	665.3		82.29
15	537	130.33	367.5		85.36
16	582	95.45	248.4		87.51
17	645	86.37	203.0		89.70
18	10,380	75.00	10.9	Upper Marker	113.00

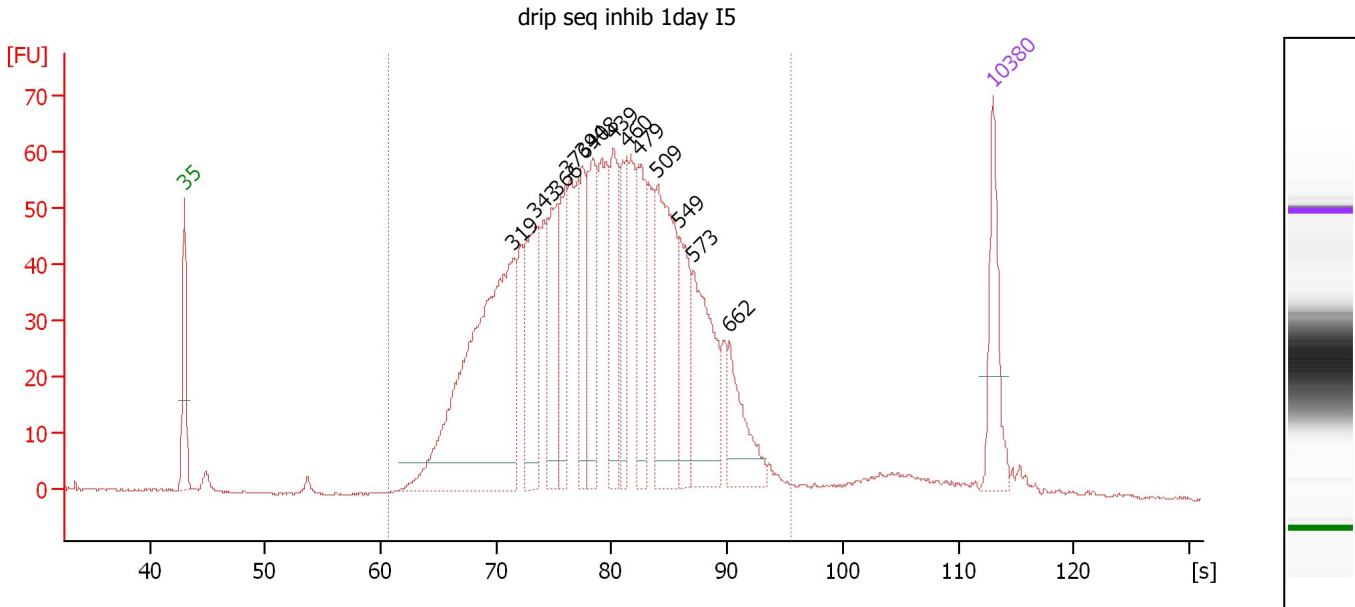
Region table for sample 1 : drip seq dms0 1day I4

From [s]	To [s]	Average Size [bp]	Corr. Area	Conc. [pg/μl]	Molarity [pmol/l]	Co % of lor Total	Size distribution in CV [%]
60.70	95.53	434	1,183.5	2,191.24	8,526.5	95	28.4

Assay Class: High Sensitivity DNA Assay
 Data Path: C:\... bioanalyzer\2100 expert\data\2017-12-20\2017-12-20_003.xad

Created: 12/20/2017 3:14:13 PM
 Modified: 12/20/2017 3:49:47 PM

Electropherogram Summary Continued ...



Overall Results for sample 2 : drip seq inhib 1day I5

Number of peaks found: 13 Corr. Area 1: 1,525.4
 Noise: 0.1

Peak table for sample 2 : drip seq inhib 1day I5

Peak	Size [bp]	Conc. [pg/μl]	Molarity [pmol/l]	Observations	Aligned Migration Time [s]
1	35	125.00	5,411.3	Lower Marker	43.00
2	319	583.24	2,768.4		71.49
3	343	162.25	716.5		73.40
4	366	126.43	522.7		75.26
5	376	105.60	425.1		76.05
6	394	89.62	344.2		77.49
7	408	121.99	453.2		78.37
8	439	121.50	419.3		80.14
9	460	87.40	288.1		81.30
10	479	95.66	302.9		82.37
11	509	219.20	652.9		84.00
12	549	101.72	280.9		85.90
13	573	159.38	421.5		87.06
14	662	84.76	194.0		90.22
15	10,380	75.00	10.9	Upper Marker	113.00

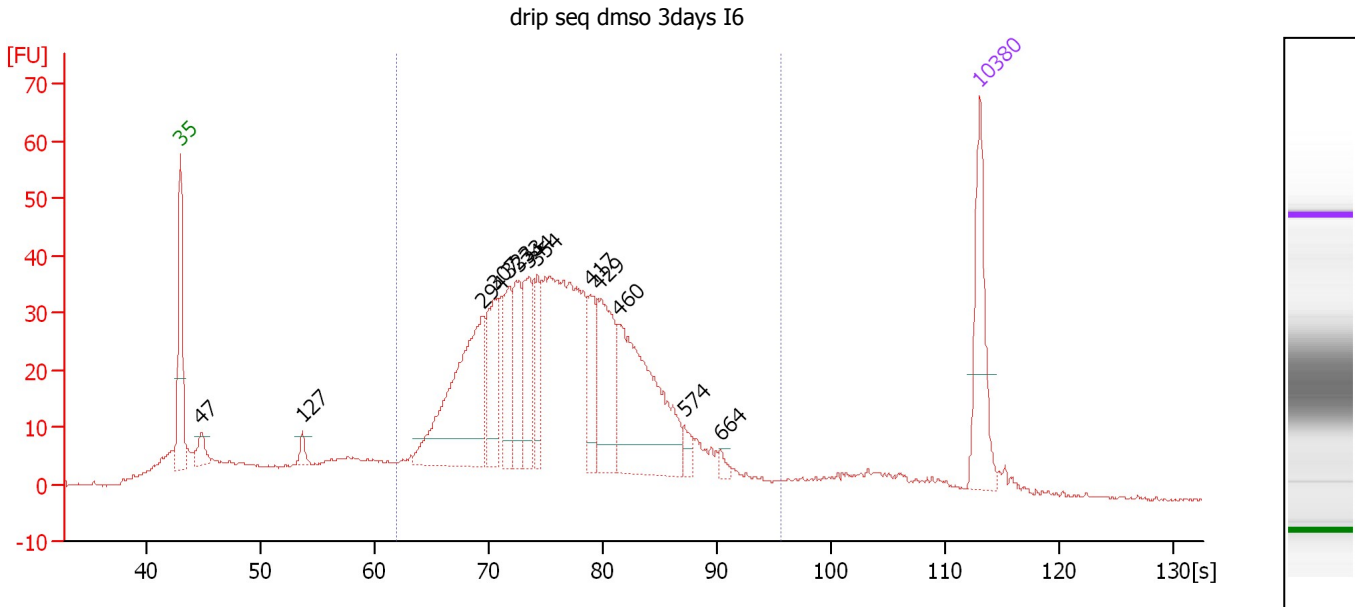
Region table for sample 2 : drip seq inhib 1day I5

From [s]	To [s]	Average Size [bp]	Corr. Area	Conc. [pg/μl]	Molarity [pmol/l]	Co % of lor Total	Size distribution in CV [%]
60.70	95.53	437	1,525.4	2,828.53	10,866.8	96	27.2

Assay Class: High Sensitivity DNA Assay
 Data Path: C:\... bioanalyzer\2100 expert\data\2017-12-20\2017-12-20_003.xad

Created: 12/20/2017 3:14:13 PM
 Modified: 12/20/2017 3:49:47 PM

Electropherogram Summary Continued ...



Overall Results for sample 3 : drip seq dms0 3days I6

Number of peaks found: 13 Corr. Area 1: 939.4
 Noise: 0.2

Peak table for sample 3 : drip seq dms0 3days I6

Peak	Size [bp]	Conc. [pg/μl]	Molarity [pmol/l]	Observations	Aligned Migration Time [s]
1	35	125.00	5,411.3	Lower Marker	43.00
2	47	27.02	877.6		44.83
3	127	14.60	174.5		53.67
4	294	253.68	1,306.7		69.42
5	307	82.64	407.4		70.55
6	323	63.41	297.2		71.82
7	333	68.67	312.1		72.62
8	344	84.48	372.2		73.46
9	354	51.38	219.9		74.26
10	417	54.86	199.5		78.87
11	429	110.81	391.3		79.57
12	460	219.90	724.5		81.31
13	574	13.11	34.6		87.10
14	664	6.90	15.7		90.29
15	10,380	75.00	10.9	Upper Marker	113.00

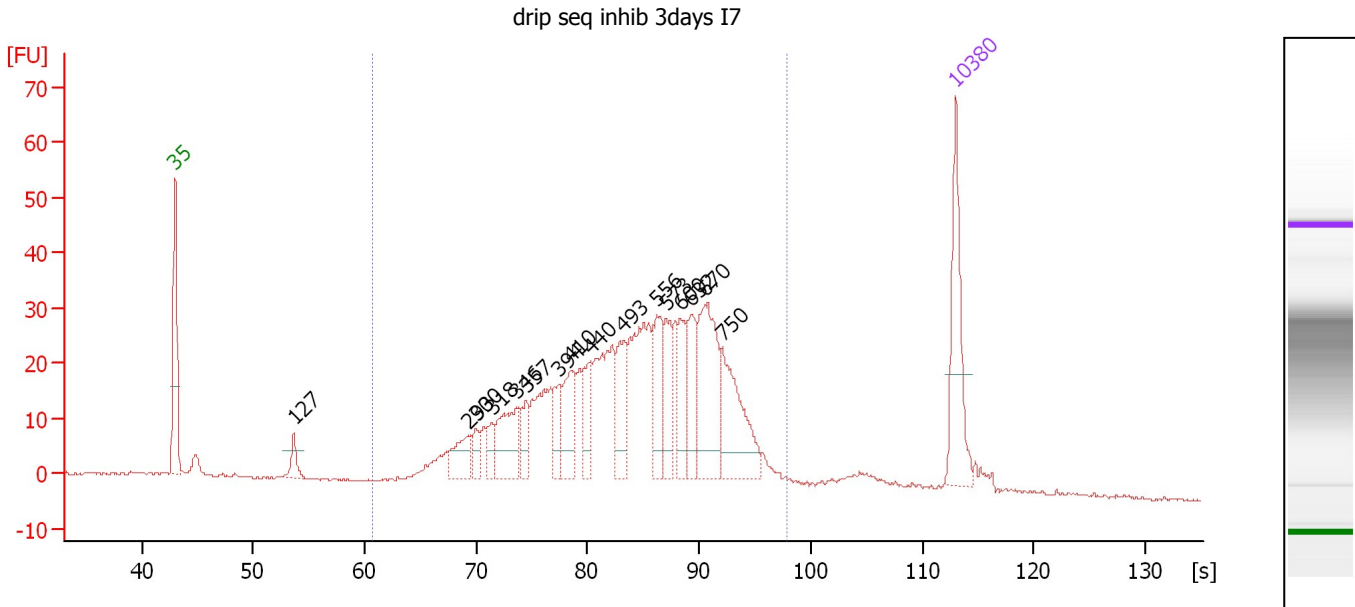
Region table for sample 3 : drip seq dms0 3days I6

From [s]	To [s]	Average Size [bp]	Corr. Area	Conc. [pg/μl]	Molarity [pmol/l]	Co % of lor Total	Size distribution in CV [%]
62.00	95.53	396	939.4	1,693.44	7,143.4	78	28.2

Assay Class: High Sensitivity DNA Assay
 Data Path: C:\... bioanalyzer\2100 expert\data\2017-12-20\2017-12-20_003.xad

Created: 12/20/2017 3:14:13 PM
 Modified: 12/20/2017 3:49:47 PM

Electropherogram Summary Continued ...



Overall Results for sample 4 : drip seq inhib 3days I7

Number of peaks found: 16 Corr. Area 1: 734.3
 Noise: 0.2

Peak table for sample 4 : drip seq inhib 3days I7

Peak	Size [bp]	Conc. [pg/μl]	Molarity [pmol/l]	Observations	Aligned Migration Time [s]
1	35	125.00	5,411.3	Lower Marker	43.00
2	127	22.66	271.5		53.64
3	293	41.40	213.9		69.33
4	300	18.89	95.4		69.96
5	318	17.96	85.6		71.40
6	346	69.07	302.5		73.62
7	357	30.66	130.0		74.53
8	394	31.67	121.7		77.47
9	410	54.02	199.8		78.48
10	440	41.95	144.3		80.21
11	493	56.07	172.2		83.20
12	556	60.26	164.3		86.23
13	573	44.46	117.6		87.05
14	600	45.41	114.7		88.35
15	632	49.33	118.3		89.31
16	670	117.67	266.0		90.47
17	750	100.62	203.3		92.06
18	10,380	75.00	10.9	Upper Marker	113.00

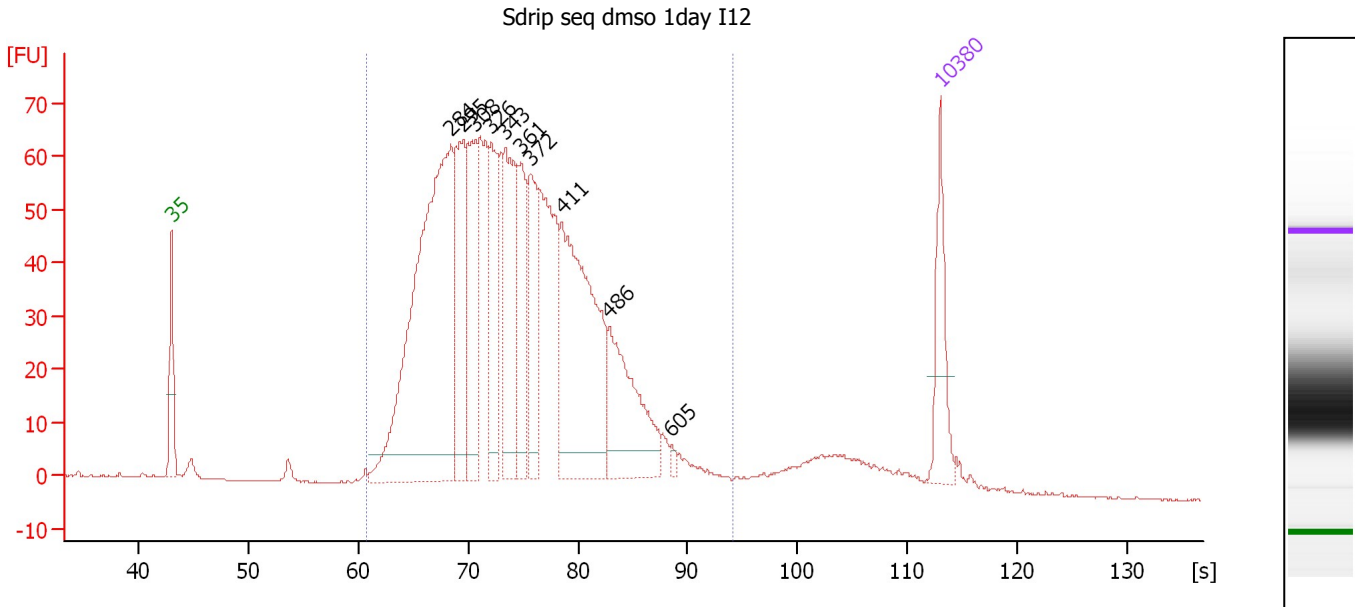
Region table for sample 4 : drip seq inhib 3days I7

From [s]	To [s]	Average Size [bp]	Corr. Area	Conc. [pg/μl]	Molarity [pmol/l]	Co % of lor Total	Size distribution in CV [%]
60.70	97.83	536	734.3	1,334.82	4,372.2	91	32.9

Assay Class: High Sensitivity DNA Assay
 Data Path: C:\... bioanalyzer\2100 expert\data\2017-12-20\2017-12-20_003.xad

Created: 12/20/2017 3:14:13 PM
 Modified: 12/20/2017 3:49:47 PM

Electropherogram Summary Continued ...



Overall Results for sample 5 : Sdrip seq dms0 1day I12

Number of peaks found: 10 Corr. Area 1: 1,572.8
 Noise: 0.2

Peak table for sample 5 : Sdrip seq dms0 1day I12

Peak	Size [bp]	Conc. [pg/μl]	Molarity [pmol/l]	Observations	Aligned Migration Time [s]
1	35	125.00	5,411.3	Lower Marker	43.00
2	284	805.92	4,306.7		68.44
3	295	210.38	1,080.0		69.51
4	308	205.06	1,007.2		70.64
5	326	157.57	731.7		72.06
6	343	211.85	936.2		73.38
7	361	135.87	570.8		74.80
8	372	135.01	550.3		75.68
9	411	399.19	1,470.9		78.56
10	486	194.74	606.5		82.82
11	605	6.50	16.3		88.49
12	10,380	75.00	10.9	Upper Marker	113.00

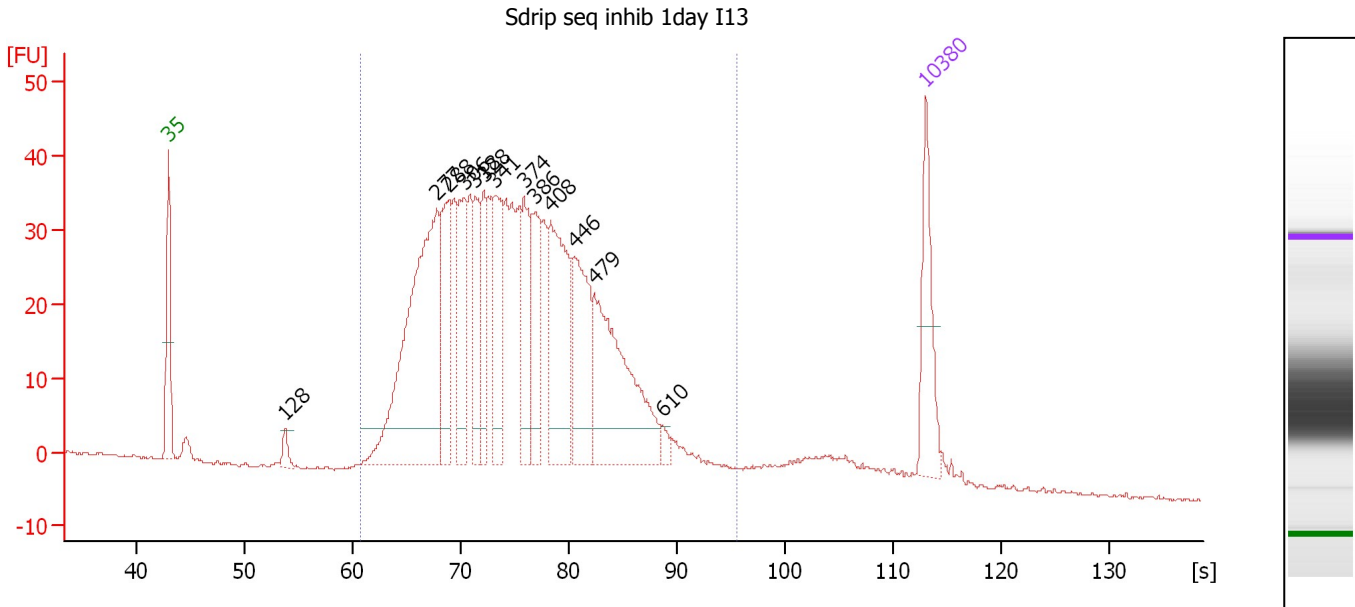
Region table for sample 5 : Sdrip seq dms0 1day I12

From [s]	To [s]	Average Size [bp]	Corr. Area	Conc. [pg/μl]	Molarity [pmol/l]	Co % of lor Total	Size distribution in CV [%]
60.70	94.18	364	1,572.8	3,131.33	14,217.8	94	26.5

Assay Class: High Sensitivity DNA Assay
 Data Path: C:\... bioanalyzer\2100 expert\data\2017-12-20\2017-12-20_003.xad

Created: 12/20/2017 3:14:13 PM
 Modified: 12/20/2017 3:49:47 PM

Electropherogram Summary Continued ...



Overall Results for sample 6 : Sdrip seq inhib 1day I13

Number of peaks found: 13 Corr. Area 1: 985.4
 Noise: 0.2

Peak table for sample 6 : Sdrip seq inhib 1day I13

Peak	Size [bp]	Conc. [pg/μl]	Molarity [pmol/l]	Observations	Aligned Migration Time [s]
1	35	125.00	5,411.3	Lower Marker	43.00
2	128	18.94	224.2		53.78
3	277	465.15	2,548.4		67.79
4	288	143.61	754.6		68.88
5	306	113.56	562.7		70.42
6	318	84.64	403.7		71.37
7	328	83.35	385.5		72.16
8	341	117.84	524.0		73.21
9	374	93.97	380.3		75.89
10	386	99.27	389.4		76.83
11	408	190.65	708.3		78.37
12	446	143.75	487.8		80.56
13	479	246.55	779.8		82.40
14	610	9.26	23.0		88.66
15	10,380	75.00	10.9	Upper Marker	113.00

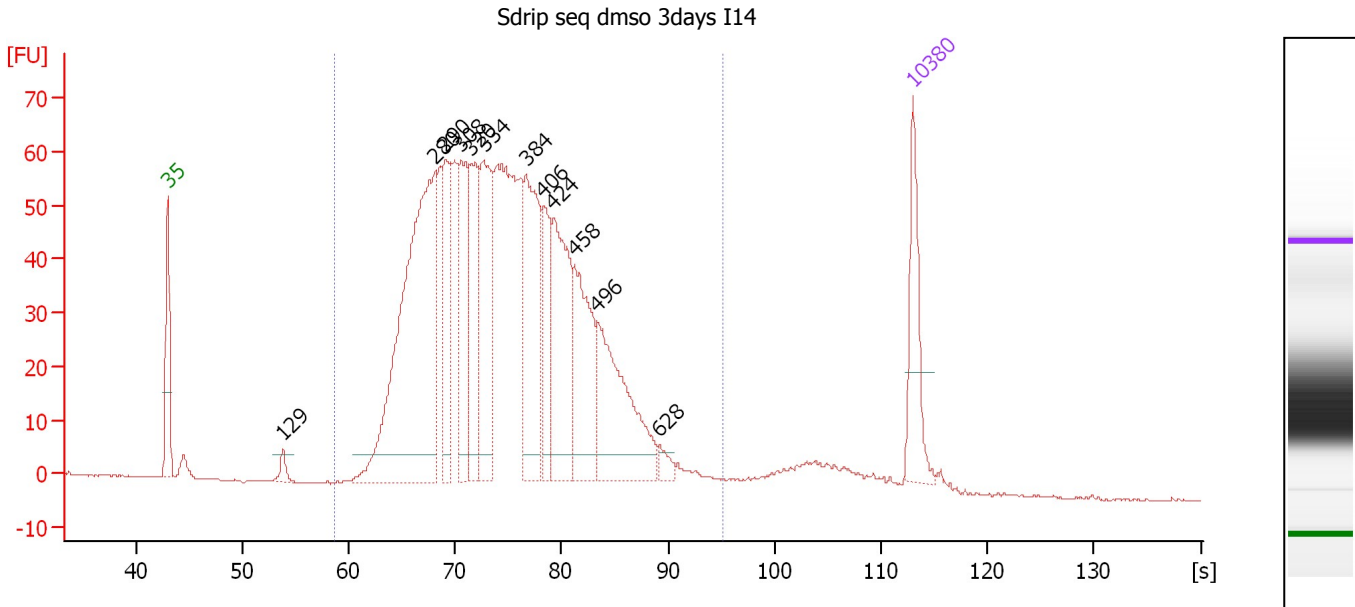
Region table for sample 6 : Sdrip seq inhib 1day I13

From [s]	To [s]	Average Size [bp]	Corr. Area	Conc. [pg/μl]	Molarity [pmol/l]	Co % of lor Total	Size distribution in CV [%]
60.70	95.53	380	985.4	2,429.52	10,685.2	94	28.7

Assay Class: High Sensitivity DNA Assay
 Data Path: C:\... bioanalyzer\2100 expert\data\2017-12-20\2017-12-20_003.xad

Created: 12/20/2017 3:14:13 PM
 Modified: 12/20/2017 3:49:47 PM

Electropherogram Summary Continued ...



Overall Results for sample 7 : Sdrip seq dms0 3days I14

Number of peaks found: 12 Corr. Area 1: 1,544.4
 Noise: 0.1

Peak table for sample 7 : Sdrip seq dms0 3days I14

Peak	Size [bp]	Conc. [pg/μl]	Molarity [pmol/l]	Observations	Aligned Migration Time [s]
1	35	125.00	5,411.3	Lower Marker	43.00
2	129	16.39	193.1		53.84
3	280	622.14	3,365.8		68.12
4	290	129.34	674.8		69.07
5	308	148.12	729.1		70.59
6	320	151.23	716.4		71.54
7	334	176.77	800.9		72.70
8	384	208.64	822.3		76.69
9	406	95.60	357.1		78.25
10	424	197.59	706.8		79.26
11	458	156.99	519.0		81.23
12	496	208.58	637.4		83.35
13	628	13.69	33.0		89.20
14	10,380	75.00	10.9	Upper Marker	113.00

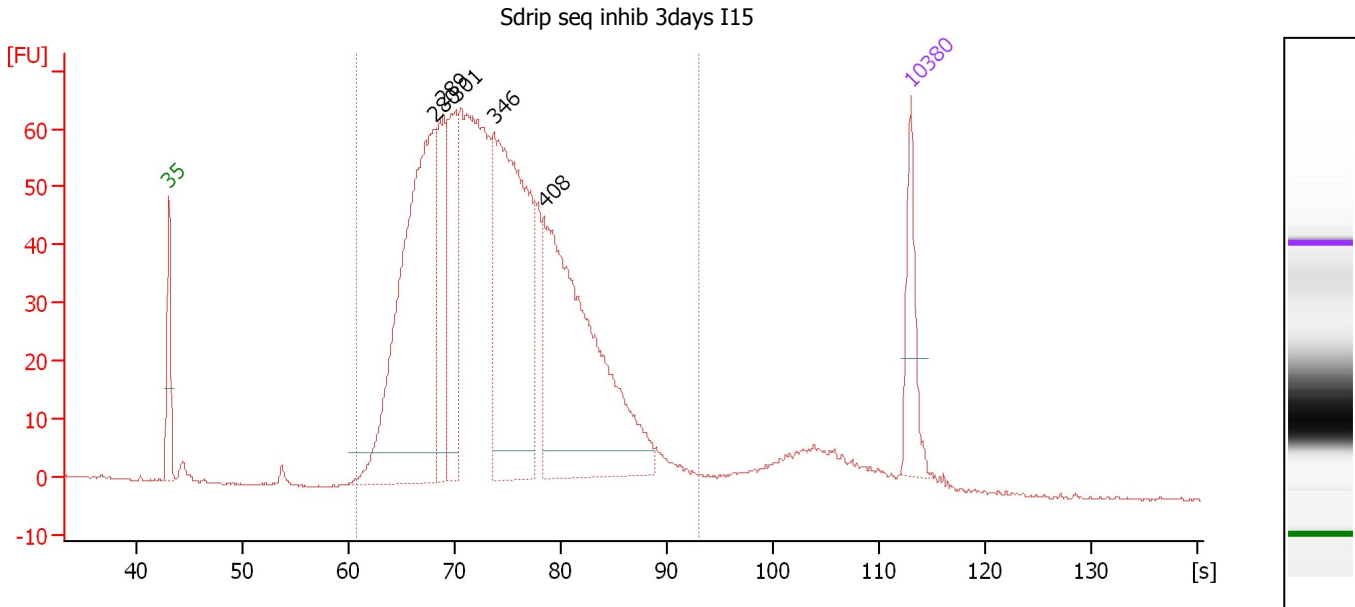
Region table for sample 7 : Sdrip seq dms0 3days I14

From [s]	To [s]	Average Size [bp]	Corr. Area	Conc. [pg/μl]	Molarity [pmol/l]	Co % of lor Total	Size distribution in CV [%]
58.67	95.21	372	1,544.4	2,842.59	12,695.9	95	27.3

Assay Class: High Sensitivity DNA Assay
 Data Path: C:\... bioanalyzer\2100 expert\data\2017-12-20\2017-12-20_003.xad

Created: 12/20/2017 3:14:13 PM
 Modified: 12/20/2017 3:49:47 PM

Electropherogram Summary Continued ...



Overall Results for sample 8 : Sdrip seq inhib 3days I15

Number of peaks found: 5 Corr. Area 1: 1,508.3
 Noise: 0.2

Peak table for sample 8 : Sdrip seq inhib 3days I15

Peak	Size [bp]	Conc. [pg/μl]	Molarity [pmol/l]	Observations	Aligned Migration Time [s]
1	35	125.00	5,411.3	Lower Marker	43.00
2	280	761.24	4,122.3		68.09
3	289	182.25	957.0		68.90
4	301	210.36	1,057.8		70.07
5	346	615.46	2,691.4		73.67
6	408	612.36	2,274.3		78.38
7	10,380	75.00	10.9	Upper Marker	113.00

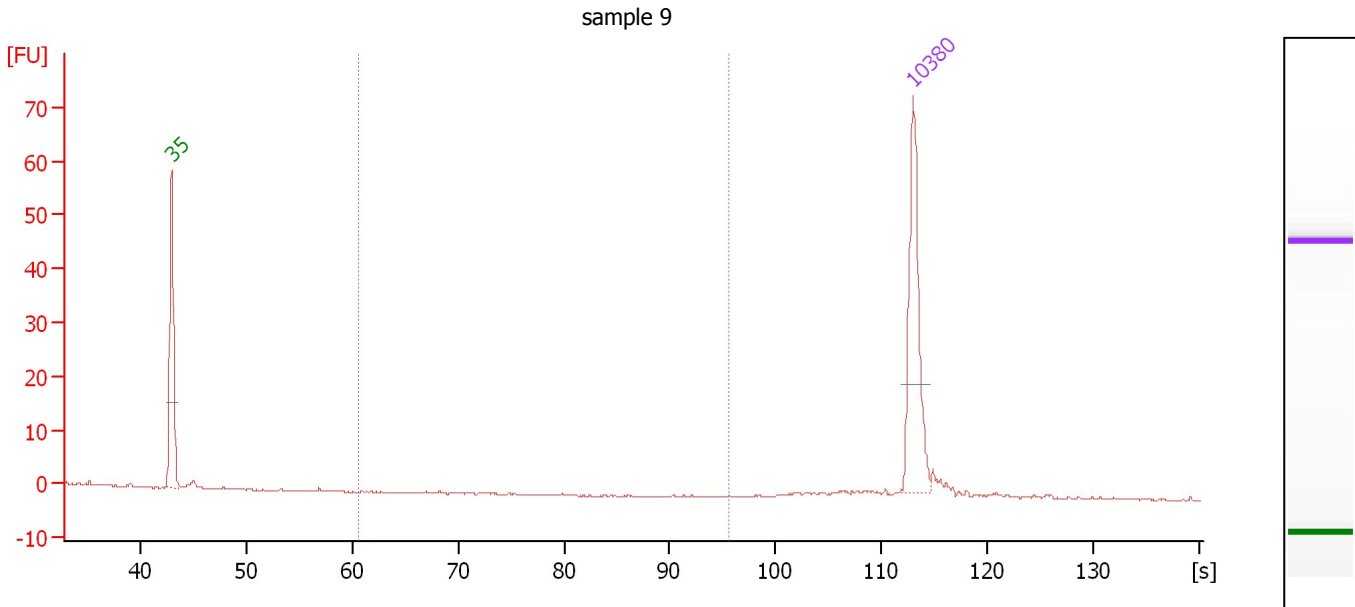
Region table for sample 8 : Sdrip seq inhib 3days I15

From [s]	To [s]	Average Size [bp]	Corr. Area	Conc. [pg/μl]	Molarity [pmol/l]	Co % of lor Total	Size distribution in CV [%]
60.70	93.02	360	1,508.3	3,134.11	14,344.0	94	26.0

Assay Class: High Sensitivity DNA Assay
 Data Path: C:\... bioanalyzer\2100 expert\data\2017-12-20\2017-12-20_003.xad

Created: 12/20/2017 3:14:13 PM
 Modified: 12/20/2017 3:49:47 PM

Electropherogram Summary Continued ...



Overall Results for sample 9 : sample 9

Number of peaks found: 0 Corr. Area 1: 0.0
 Noise: 0.1

Peak table for sample 9 : sample 9

Peak	Size [bp]	Conc. [pg/μl]	Molarity [pmol/l]	Observations	Aligned Migration Time [s]
1	35	125.00	5,411.3	Lower Marker	43.00
2	10,380	75.00	10.9	Upper Marker	113.00

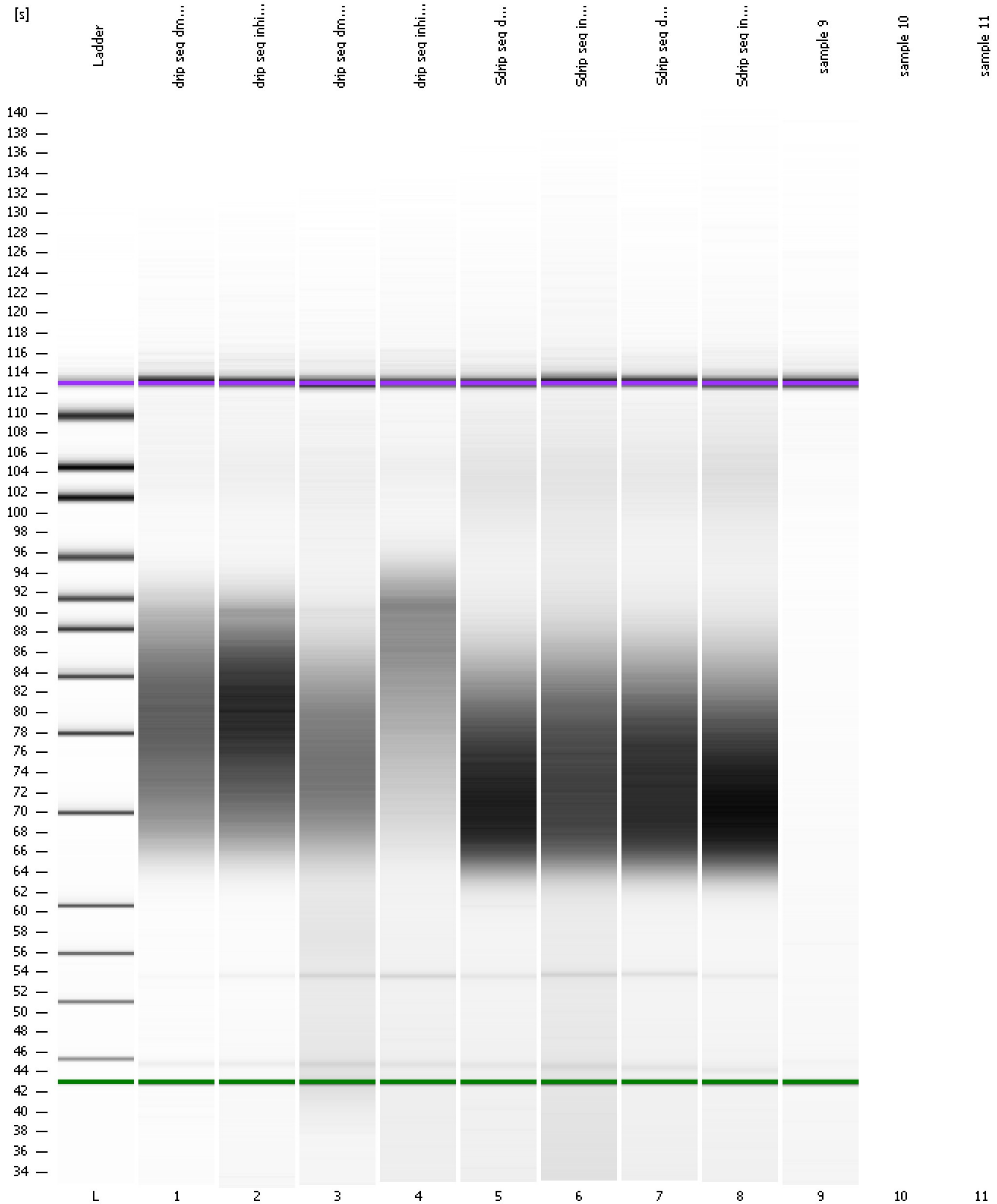
Region table for sample 9 : sample 9

From [s]	To [s]	Average Size [bp]	Corr. Area	Conc. [pg/μl]	Molarity [pmol/l]	Co % of lor Total	Size distribution in CV [%]
60.70	95.53	0	0.0	0.00	0.0	0	0.0

Assay Class: High Sensitivity DNA Assay
Data Path: C:\... bioanalyzer\2100 expert\data\2017-12-20\2017-12-20_003.xad

Created: 12/20/2017 3:14:13 PM
Modified: 12/20/2017 3:49:47 PM

Gel Image



Assay Class: High Sensitivity DNA Assay
Data Path: C:\... bioanalyzer\2100 expert\data\2017-12-20\2017-12-20_003.xad

Created: 12/20/2017 3:14:13 PM
Modified: 12/20/2017 3:49:47 PM

Invalid Samples

Sample 10 has not been run, no results available.

Sample 11 has not been run, no results available.