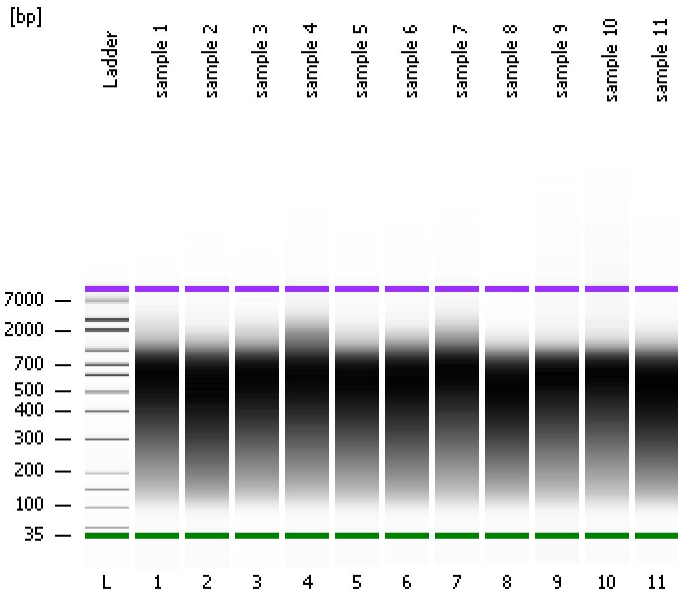


Assay Class: High Sensitivity DNA Assay
Data Path: C:\... bioanalyzer\2100 expert\data\2019-08-13\2019-08-13_001.xad

Created: 8/13/2019 12:39:08 PM
Modified: 8/13/2019 1:20:25 PM

Electrophoresis File Run Summary



Instrument Information:

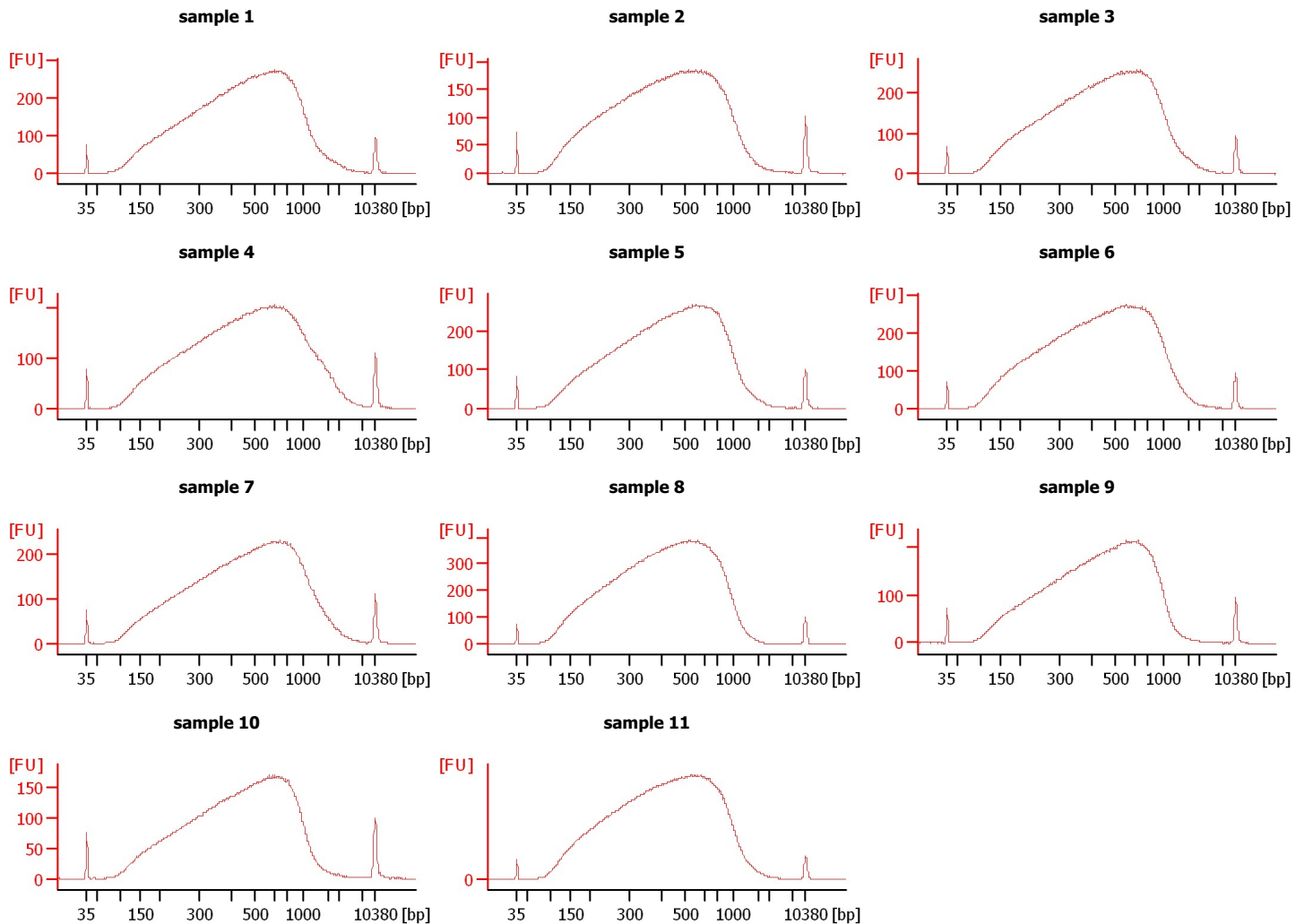
Instrument Name: DE34903152 Firmware: C.01.069
Serial#: DE34903152 Type: G2938C

Assay Information:

Assay Origin Path: C:\Program Files\Agilent\2100 bioanalyzer\2100 expert\assays\dsDNA\High Sensitivity DNA.xsy
Assay Class: High Sensitivity DNA Assay
Version: 1.03
Assay Comments: Copyright © 2003-2010 Agilent Technologies

Chip Information:

Chip Lot #:
Reagent Kit Lot #:
Chip Comments:



Assay Class: High Sensitivity DNA Assay
 Data Path: C:\... bioanalyzer\2100 expert\data\2019-08-13\2019-08-13_001.xad

Created: 8/13/2019 12:39:08 PM
 Modified: 8/13/2019 1:20:25 PM

Electrophoresis File Run Summary (Chip Summary)

Sample Name	Sample Comment	Rest. Digest	Status	Observation	Result Label	Result Color
sample 1		<input type="checkbox"/>	✓			
sample 2		<input type="checkbox"/>	✓			
sample 3		<input type="checkbox"/>	✓			
sample 4		<input type="checkbox"/>	✓			
sample 5		<input type="checkbox"/>	✓			
sample 6		<input type="checkbox"/>	✓			
sample 7		<input type="checkbox"/>	✓			
sample 8		<input type="checkbox"/>	✓			
sample 9		<input type="checkbox"/>	✓			
sample 10		<input type="checkbox"/>	✓			
sample 11		<input type="checkbox"/>	✓			
Ladder		<input type="checkbox"/>	✓			

Chip Lot #

Reagent Kit Lot #

Chip Comments :

Assay Class: High Sensitivity DNA Assay
Data Path: C:\... bioanalyzer\2100 expert\data\2019-08-13\2019-08-13_001.xad

Created: 8/13/2019 12:39:08 PM
Modified: 8/13/2019 1:20:25 PM

Electrophoresis Assay Details

General Analysis Settings

Number of Available Sample and Ladder Wells (Max.) : 12
Minimum Visible Range [s] : 32
Maximum Visible Range [s] : 138
Start Analysis Time Range [s] : 33
End Analysis Time Range [s] : 137.5
Ladder Concentration [pg/μl] : 1950
Uses Standard Area for Ladder Fragments
Lower Marker Concentration [pg/μl] : 125
Upper Marker Concentration [pg/μl] : 75
Used Upper Marker for Quantitation
Standard Curve Fit is Point to Point
Show Data Aligned to Lower and Upper Marker

Integrator Settings

Integration Start Time [s] : 33.05
Integration End Time [s] : 137
Slope Threshold : 0.8
Height Threshold [FU] : 5
Area Threshold : 0.1
Width Threshold [s] : 0.6
Baseline Plateau [s] : 0.5

Filter Settings

Filter Width [s] : 0.5
Polynomial Order : 4

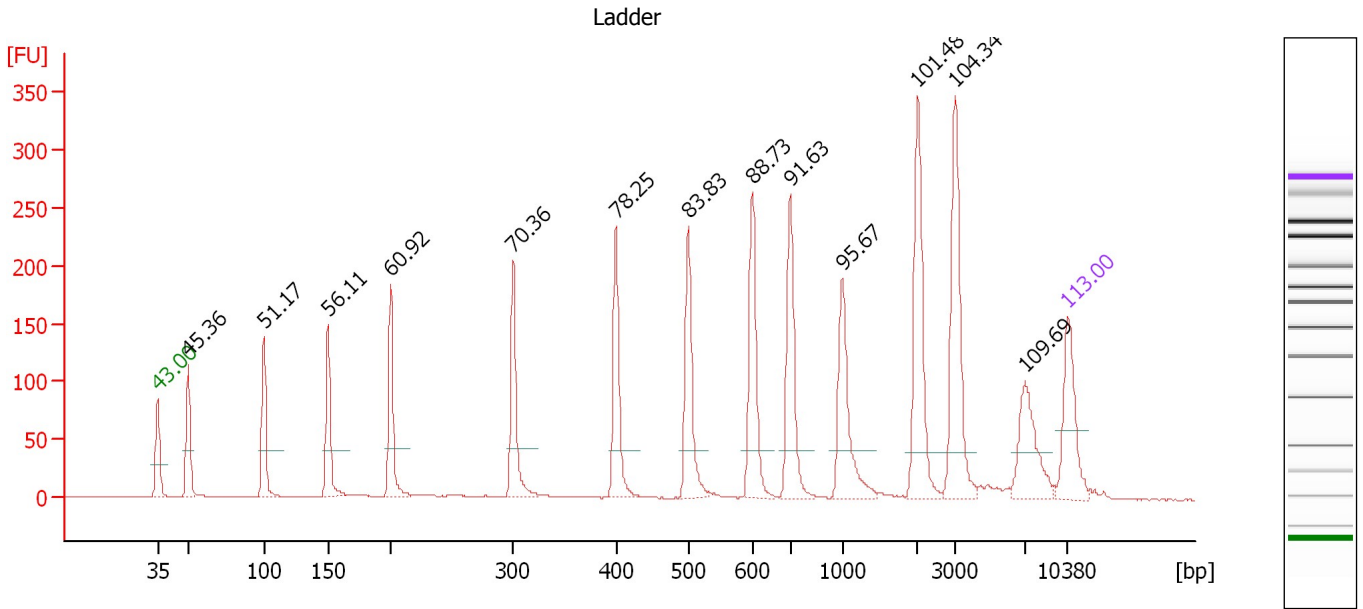
Ladder

Ladder Peak	Size	Area
1	35	160
2	50	210
3	100	208
4	150	221
5	200	242
6	300	270
7	400	305
8	500	306
9	600	336
10	700	321
11	1000	366
12	2000	413
13	3000	411
14	7000	400
15	10380	214

Assay Class: High Sensitivity DNA Assay
 Data Path: C:\... bioanalyzer\2100 expert\data\2019-08-13\2019-08-13_001.xad

Created: 8/13/2019 12:39:08 PM
 Modified: 8/13/2019 1:20:25 PM

Electropherogram Summary



Overall Results for Ladder

Noise: 0.3

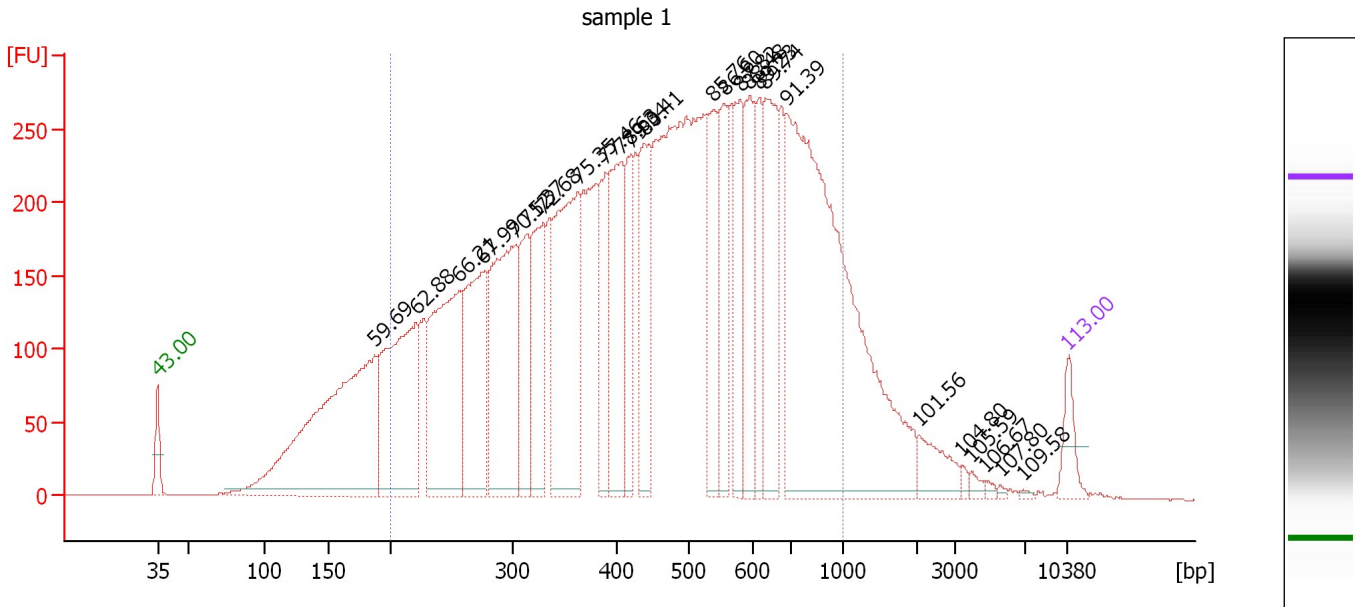
Peak table for Ladder

Peak	Size [bp]	Conc. [pg/μl]	Molarity [pmol/l]	Observations	Aligned Migration Time [s]
1	35	125.00	5,411.3	Lower Marker	43.00
2	50	150.00	4,545.5	Ladder Peak	45.36
3	100	150.00	2,272.7	Ladder Peak	51.17
4	150	150.00	1,515.2	Ladder Peak	56.11
5	200	150.00	1,136.4	Ladder Peak	60.92
6	300	150.00	757.6	Ladder Peak	70.36
7	400	150.00	568.2	Ladder Peak	78.25
8	500	150.00	454.5	Ladder Peak	83.83
9	600	150.00	378.8	Ladder Peak	88.73
10	700	150.00	324.7	Ladder Peak	91.63
11	1,000	150.00	227.3	Ladder Peak	95.67
12	2,000	150.00	113.6	Ladder Peak	101.48
13	3,000	150.00	75.8	Ladder Peak	104.34
14	7,000	150.00	32.5	Ladder Peak	109.69
15	10,380	75.00	10.9	Upper Marker	113.00

Assay Class: High Sensitivity DNA Assay
 Data Path: C:\... bioanalyzer\2100 expert\data\2019-08-13\2019-08-13_001.xad

Created: 8/13/2019 12:39:08 PM
 Modified: 8/13/2019 1:20:25 PM

Electropherogram Summary Continued ...



Overall Results for sample 1 : sample 1

Number of peaks found: 25 Corr. Area 1: 9,459.4
 Noise: 0.3

Peak table for sample 1 : sample 1

Peak	Size [bp]	Conc. [pg/μl]	Molarity [pmol/l]	Observations	Aligned Migration Time [s]
1	35	125.00	5,411.3	Lower Marker	43.00
2	187	1,475.55	11,941.0		59.69
3	221	869.33	5,966.2		62.88
4	256	831.00	4,917.4		66.21
5	275	615.75	3,393.5		67.99
6	302	783.47	3,929.4		70.52
7	313	316.89	1,535.0		71.37
8	329	415.55	1,911.3		72.68
9	363	785.74	3,277.1		75.35
10	390	293.08	1,138.6		77.46
11	407	451.90	1,682.8		78.63
12	419	247.19	892.9		79.34
13	439	377.14	1,302.2		80.41
14	539	301.58	847.2		85.76
15	557	280.49	763.5		86.60
16	581	306.66	799.0		87.82
17	595	303.07	771.9		88.48
18	617	217.38	533.6		89.23
19	635	417.16	995.4		89.74
20	692	1,981.82	4,342.4		91.39
21	2,029	101.69	75.9		101.56
22	3,344	13.16	6.0		104.80
23	3,939	15.47	5.9		105.59
24	4,745	8.57	2.7		106.67
25	5,586	5.15	1.4		107.80

Assay Class: High Sensitivity DNA Assay
 Data Path: C:\... bioanalyzer\2100 expert\data\2019-08-13\2019-08-13_001.xad

Created: 8/13/2019 12:39:08 PM
 Modified: 8/13/2019 1:20:25 PM

Electropherogram Summary Continued ...

... Peak table for sample 1 : sample 1

Peak	Size [bp]	Conc. [pg/μl]	Molarity [pmol/l]	Observations	Aligned Migration Time [s]
26	6,917	5.55	1.2		109.58
27	10,380	75.00	10.9	Upper Marker	113.00

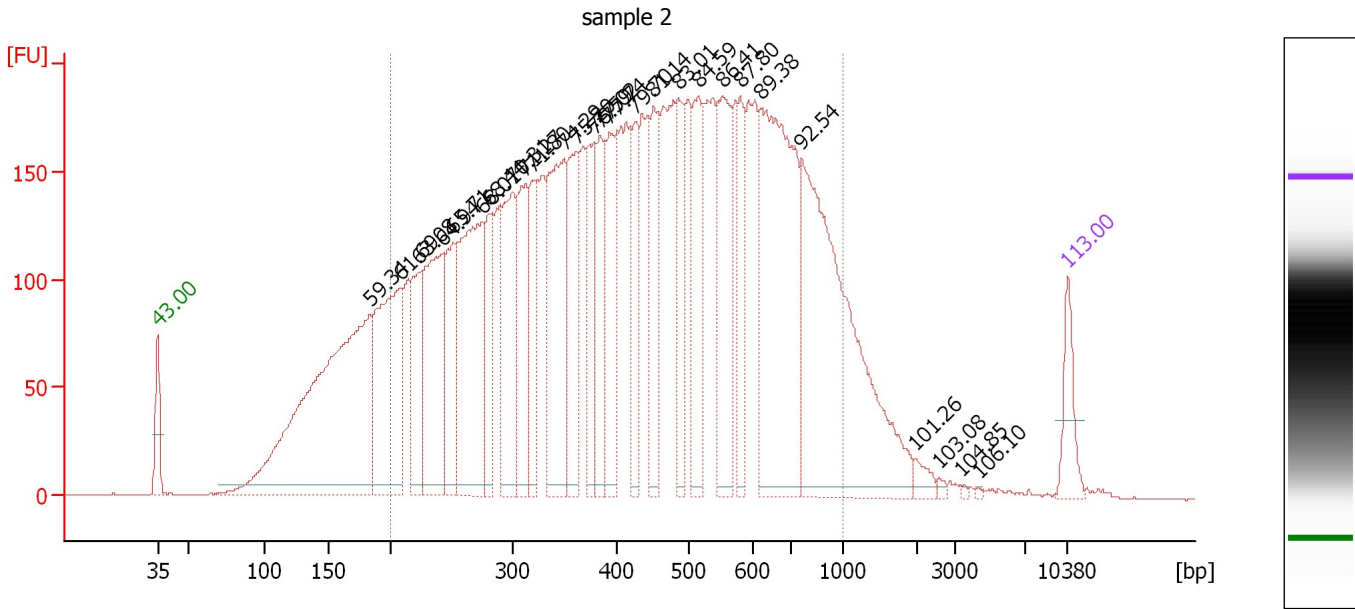
Region table for sample 1 : sample 1

From [bp]	To [bp]	Average Size [bp]	Conc. [pg/μl]	Corr. Area	Molarity [pmol/l]	Co % of lor Total	Size distribution in CV [%]
200	1,000	482	11,997.16	9,459.4	47,022.8	83	38.6

Assay Class: High Sensitivity DNA Assay
 Data Path: C:\... bioanalyzer\2100 expert\data\2019-08-13\2019-08-13_001.xad

Created: 8/13/2019 12:39:08 PM
 Modified: 8/13/2019 1:20:25 PM

Electropherogram Summary Continued ...



Overall Results for sample 2 : sample 2

Number of peaks found: 27 Corr. Area 1: 6,982.9
 Noise: 0.4

Peak table for sample 2 : sample 2

Peak	Size [bp]	Conc. [pg/μl]	Molarity [pmol/l]	Observations	Aligned Migration Time [s]
1	35	125.00	5,411.3	Lower Marker	43.00
2	184	1,355.91	11,192.3		59.34
3	208	601.78	4,381.1		61.69
4	223	234.69	1,595.7		63.08
5	243	474.71	2,964.2		64.94
6	251	259.04	1,565.1		65.71
7	275	587.88	3,237.3		68.01
8	280	185.80	1,006.4		68.44
9	300	374.49	1,894.4		70.31
10	312	275.89	1,341.7		71.27
11	318	218.87	1,042.0		71.80
12	350	496.32	2,149.8		74.29
13	361	272.26	1,141.6		75.20
14	379	198.28	792.8		76.59
15	384	227.26	895.8		77.02
16	394	253.62	976.5		77.74
17	426	182.43	648.8		79.70
18	452	213.53	716.1		81.14
19	485	185.48	579.1		83.01
20	515	261.79	769.5		84.59
21	553	312.72	857.4		86.41
22	581	174.23	454.4		87.80
23	622	746.28	1,816.8		89.38
24	768	941.85	1,859.3		92.54
25	1,963	24.08	18.6		101.26

Assay Class: High Sensitivity DNA Assay
Data Path: C:\... bioanalyzer\2100 expert\data\2019-08-13\2019-08-13_001.xad

Created: 8/13/2019 12:39:08 PM
Modified: 8/13/2019 1:20:25 PM

Electropherogram Summary Continued ...

... Peak table for sample 2 : sample 2

Peak	Size [bp]	Conc. [pg/μl]	Molarity [pmol/l]	Observations	Aligned Migration Time [s]
26	2,562	6.41	3.8		103.08
27	3,388	3.38	1.5		104.85
28	4,319	2.61	0.9		106.10
29	10,380	75.00	10.9	Upper Marker	113.00

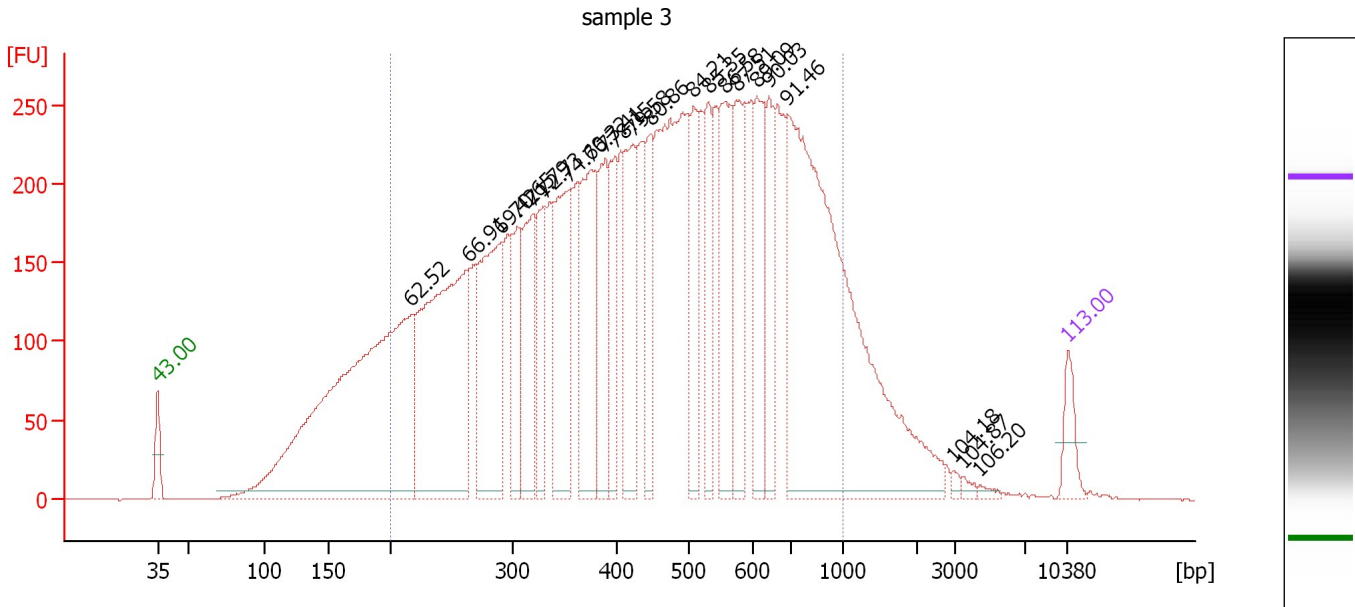
Region table for sample 2 : sample 2

From [bp]	To [bp]	Average Size [bp]	Conc. [pg/μl]	Corr. Area	Molarity [pmol/l]	Co % of lor Total	Size distribution in CV [%]
200	1,000	463	9,485.57	6,982.9	38,616.7	83	39.1

Assay Class: High Sensitivity DNA Assay
 Data Path: C:\... bioanalyzer\2100 expert\data\2019-08-13\2019-08-13_001.xad

Created: 8/13/2019 12:39:08 PM
 Modified: 8/13/2019 1:20:25 PM

Electropherogram Summary Continued ...



Overall Results for sample 3 : sample 3

Number of peaks found: 22 Corr. Area 1: 8,954.5
 Noise: 0.3

Peak table for sample 3 : sample 3


Peak	Size [bp]	Conc. [pg/μl]	Molarity [pmol/l]	Observations	Aligned Migration Time [s]
1	35	125.00	5,411.3	Lower Marker	43.00
2	217	2,266.20	15,825.3		62.52
3	263	1,300.66	7,479.9		66.91
4	290	722.04	3,771.0		69.42
5	304	290.78	1,450.3		70.65
6	318	381.49	1,816.8		71.79
7	330	275.62	1,265.4		72.73
8	354	511.61	2,191.3		74.60
9	376	518.20	2,090.4		76.32
10	389	333.48	1,297.7		77.41
11	399	239.90	911.6		78.15
12	424	392.42	1,403.0		79.58
13	447	264.92	898.4		80.86
14	508	269.99	805.6		84.21
15	531	243.72	695.5		85.35
16	556	382.25	1,041.5		86.58
17	575	319.79	842.4		87.51
18	612	310.10	767.1		89.09
19	645	241.02	566.4		90.03
20	694	1,968.43	4,297.6		91.46
21	2,944	10.65	5.5		104.18
22	3,397	13.53	6.0		104.87
23	4,391	11.26	3.9		106.20
24	10,380	75.00	10.9	Upper Marker	113.00

Assay Class: High Sensitivity DNA Assay
Data Path: C:\... bioanalyzer\2100 expert\data\2019-08-13\2019-08-13_001.xad

Created: 8/13/2019 12:39:08 PM
Modified: 8/13/2019 1:20:25 PM

Electropherogram Summary Continued ...

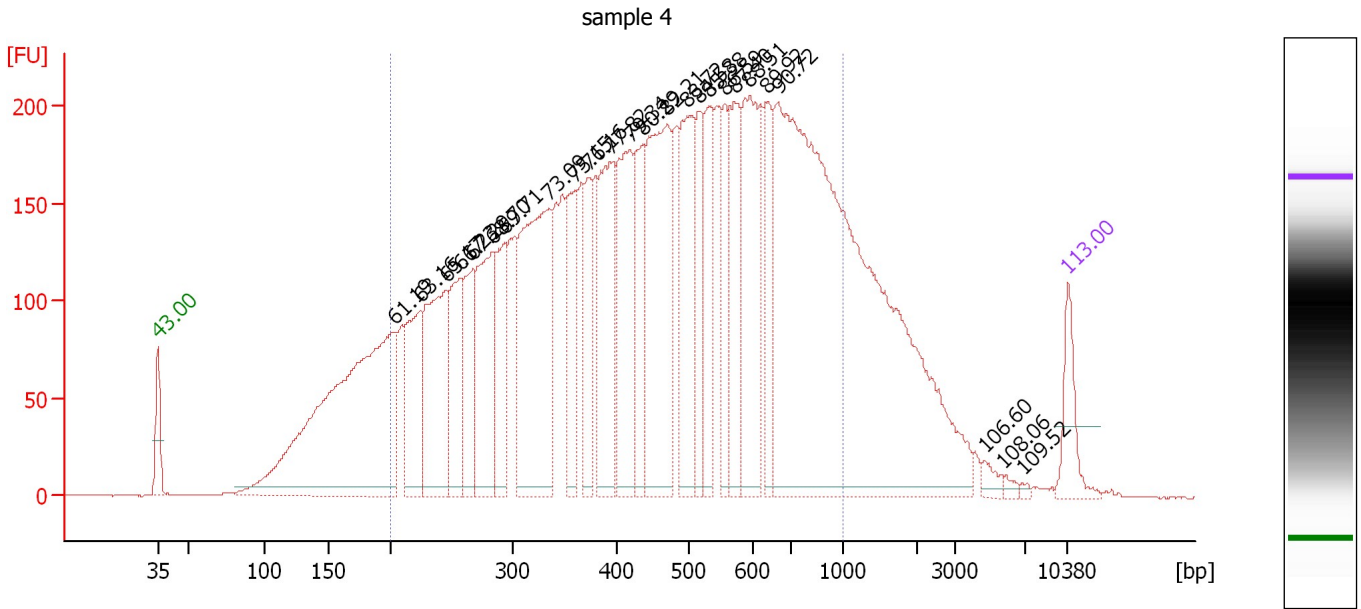
... Region table for sample 3 : sample 3

From [bp]	To [bp]	Average Size [bp]	Conc. [pg/ μ l]	Corr. Area	Molarity [pmol/l]	Co % of lor Total	Size distribution in CV [%]
200	1,000	476	12,181.41	8,954.5	48,289.0	 83	38.7

Assay Class: High Sensitivity DNA Assay
 Data Path: C:\... bioanalyzer\2100 expert\data\2019-08-13\2019-08-13_001.xad

Created: 8/13/2019 12:39:08 PM
 Modified: 8/13/2019 1:20:25 PM

Electropherogram Summary Continued ...



Overall Results for sample 4 : sample 4

Number of peaks found: 25 Corr. Area 1: 7,136.9
 Noise: 0.3

Peak table for sample 4 : sample 4

Peak	Size [bp]	Conc. [pg/μl]	Molarity [pmol/l]	Observations	Aligned Migration Time [s]
1	35	125.00	5,411.3	Lower Marker	43.00
2	203	1,204.83	8,997.2		61.19
3	224	259.32	1,756.2		63.16
4	245	415.77	2,570.3		65.17
5	256	252.59	1,493.2		66.23
6	268	200.62	1,136.3		67.29
7	282	341.48	1,831.6		68.70
8	293	210.08	1,085.8		69.71
9	335	644.30	2,917.6		73.09
10	361	206.24	866.2		75.15
11	374	160.14	649.6		76.16
12	395	342.12	1,313.6		77.82
13	419	333.30	1,203.9		79.34
14	437	198.81	689.9		80.29
15	471	530.38	1,706.4		82.21
16	498	321.45	977.9		83.72
17	515	165.39	486.3		84.58
18	532	188.69	537.7		85.38
19	556	158.22	430.9		86.59
20	573	202.88	536.6		87.40
21	595	372.04	946.6		88.51
22	641	149.98	354.5		89.92
23	669	2,028.91	4,596.8		90.72
24	4,692	18.65	6.0		106.60
25	5,784	8.49	2.2		108.06

Assay Class: High Sensitivity DNA Assay
Data Path: C:\... bioanalyzer\2100 expert\data\2019-08-13\2019-08-13_001.xad

Created: 8/13/2019 12:39:08 PM
Modified: 8/13/2019 1:20:25 PM

Electropherogram Summary Continued ...**... Peak table for sample 4 : sample 4**

Peak	Size [bp]	Conc. [pg/ μ l]	Molarity [pmol/l]	Observations	Aligned Migration Time [s]
26	6,876	5.00	1.1		109.52
27	10,380	75.00	10.9	Upper Marker	113.00

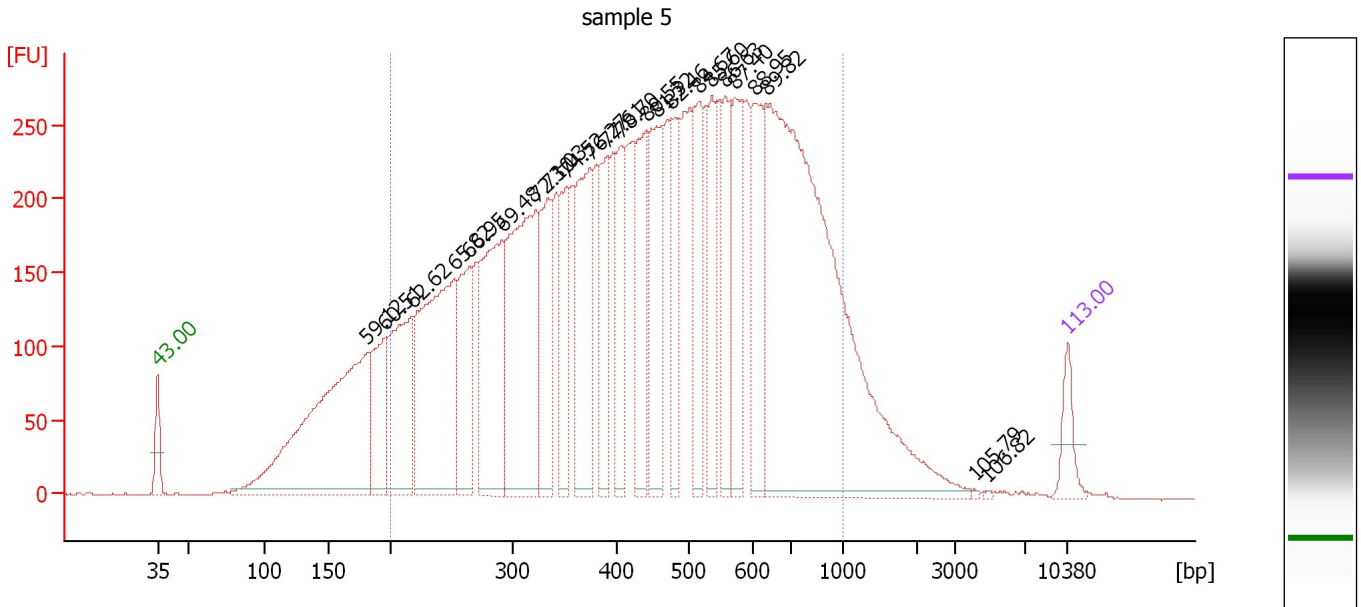
Region table for sample 4 : sample 4

From [bp]	To [bp]	Average Size [bp]	Conc. [pg/ μ l]	Corr. Area	Molarity [pmol/l]	Co % of lor Total	Size distribution in CV [%]
200	1,000	481	7,941.93	7,136.9	31,277.9	 80	39.1

Assay Class: High Sensitivity DNA Assay
 Data Path: C:\... bioanalyzer\2100 expert\data\2019-08-13\2019-08-13_001.xad

Created: 8/13/2019 12:39:08 PM
 Modified: 8/13/2019 1:20:25 PM

Electropherogram Summary Continued ...



Overall Results for sample 5 : sample 5

Number of peaks found: 23 Corr. Area 1: 9,378.9
 Noise: 0.3

Peak table for sample 5 : sample 5

Peak	Size [bp]	Conc. [pg/μl]	Molarity [pmol/l]	Observations	Aligned Migration Time [s]
1	35	125.00	5,411.3	Lower Marker	43.00
2	181	1,330.70	11,120.2		59.12
3	196	346.97	2,685.3		60.51
4	218	550.05	3,821.8		62.62
5	252	968.71	5,826.3		65.82
6	264	363.55	2,087.1		66.95
7	291	662.97	3,455.8		69.48
8	322	888.30	4,178.2		72.10
9	334	346.43	1,572.1		73.03
10	353	292.16	1,254.8		74.52
11	375	508.58	2,055.0		76.27
12	392	257.23	994.4		77.61
13	408	260.51	967.5		78.70
14	441	356.27	1,223.4		80.55
15	455	398.60	1,327.2		81.32
16	475	269.13	857.8		82.46
17	517	285.73	837.1		84.67
18	536	242.67	685.9		85.60
19	557	254.17	691.3		86.63
20	573	301.07	796.3		87.40
21	607	370.17	923.3		88.95
22	638	2,140.86	5,087.3		89.82
23	4,086	3.13	1.2		105.79
24	4,856	3.07	1.0		106.82
25	10,380	75.00	10.9	Upper Marker	113.00


Assay Class: High Sensitivity DNA Assay
Data Path: C:\... bioanalyzer\2100 expert\data\2019-08-13\2019-08-13_001.xad

Created: 8/13/2019 12:39:08 PM
Modified: 8/13/2019 1:20:25 PM

Electropherogram Summary Continued ...

... Region table for sample 5 :

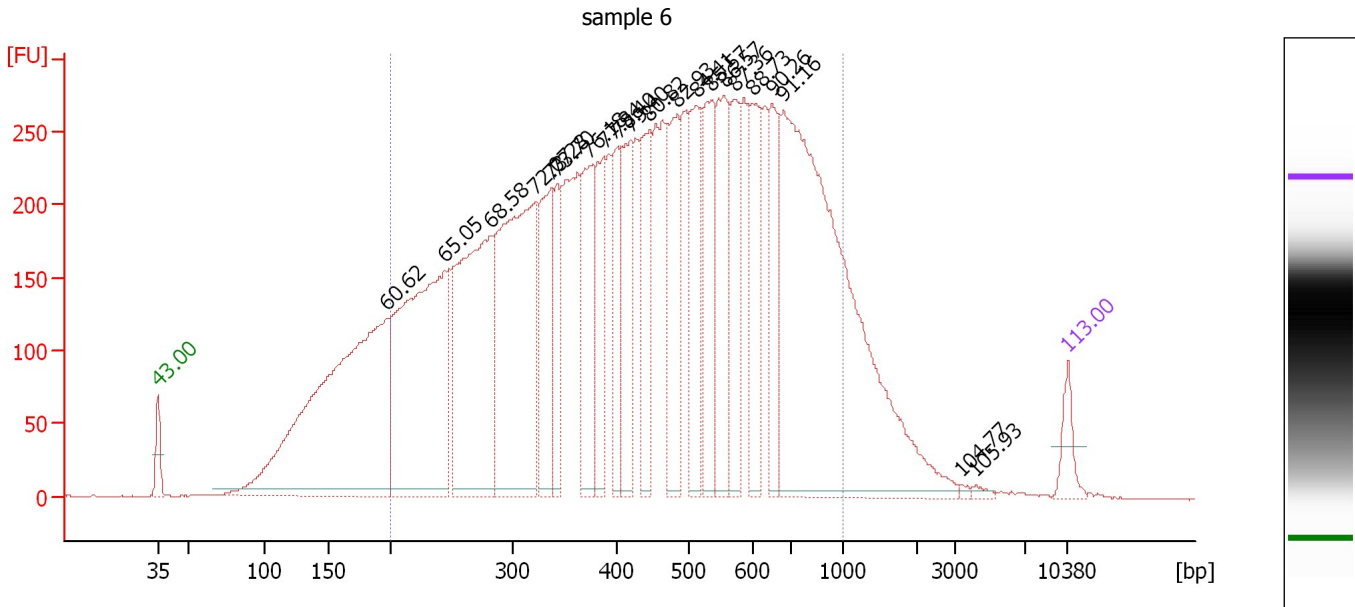
sample 5

From [bp]	To [bp]	Average Size [bp]	Conc. [pg/ μ l]	Corr. Area	Molarity [pmol/l]	Co % of lor Total	Size distribution in CV [%]
200	1,000	473	11,432.72	9,378.9	45,363.0	 85	38.4

Assay Class: High Sensitivity DNA Assay
 Data Path: C:\... bioanalyzer\2100 expert\data\2019-08-13\2019-08-13_001.xad

Created: 8/13/2019 12:39:08 PM
 Modified: 8/13/2019 1:20:25 PM

Electropherogram Summary Continued ...



Overall Results for sample 6 : sample 6

Number of peaks found: 21 Corr. Area 1: 9,761.7
 Noise: 0.3

Peak table for sample 6 : sample 6

Peak	Size [bp]	Conc. [pg/μl]	Molarity [pmol/l]	Observations	Aligned Migration Time [s]
1	35	125.00	5,411.3	Lower Marker	43.00
2	197	2,209.19	17,002.3		60.62
3	244	1,544.35	9,598.9		65.05
4	281	1,244.66	6,705.9		68.58
5	322	1,350.82	6,362.9		72.07
6	337	439.98	1,978.0		73.28
7	342	290.45	1,285.4		73.70
8	374	418.85	1,697.8		76.18
9	388	370.56	1,445.2		77.34
10	403	285.99	1,076.3		78.40
11	421	396.23	1,427.4		79.40
12	446	377.46	1,282.0		80.82
13	484	426.88	1,336.6		82.93
14	512	426.44	1,262.4		84.41
15	536	416.57	1,178.6		85.57
16	556	450.14	1,226.7		86.57
17	572	312.88	828.6		87.36
18	600	357.14	901.6		88.73
19	653	316.24	733.9		90.26
20	684	2,344.35	5,194.8		91.16
21	3,326	7.66	3.5		104.77
22	4,193	11.30	4.1		105.93
23	10,380	75.00	10.9	Upper Marker	113.00

Assay Class: High Sensitivity DNA Assay
Data Path: C:\... bioanalyzer\2100 expert\data\2019-08-13\2019-08-13_001.xad

Created: 8/13/2019 12:39:08 PM
Modified: 8/13/2019 1:20:25 PM

Electropherogram Summary Continued ...

... Region table for sample 6 :

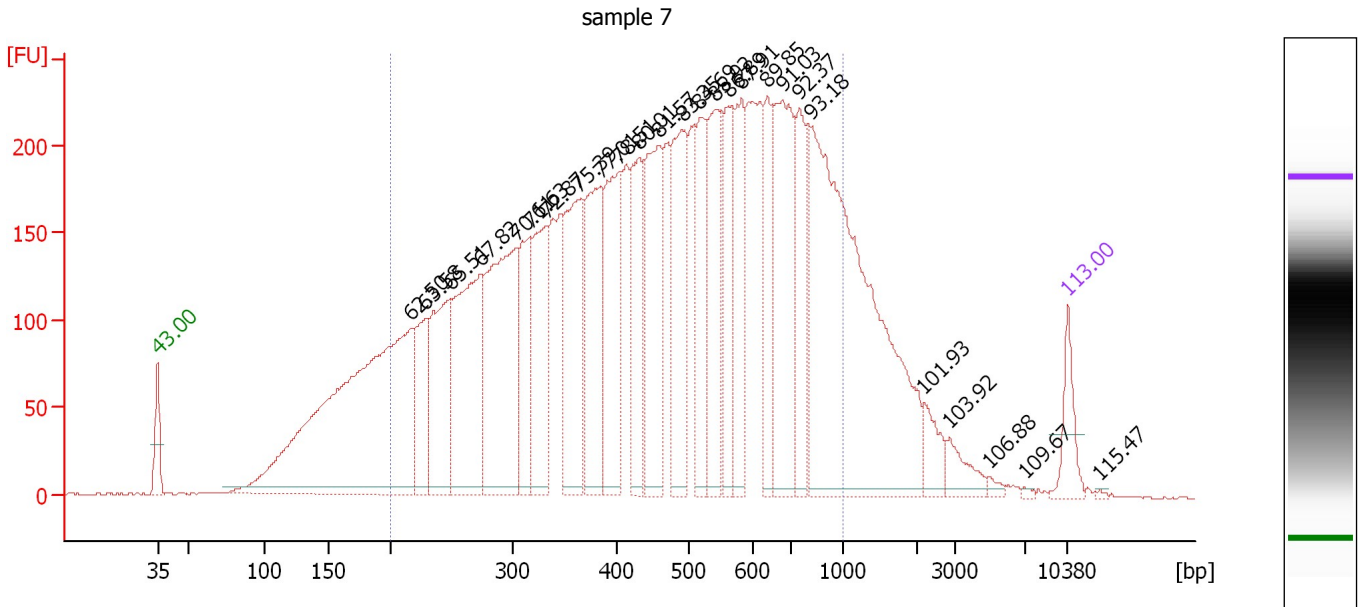
sample 6

From [bp]	To [bp]	Average Size [bp]	Conc. [pg/ μ l]	Corr. Area	Molarity [pmol/l]	Co % of lor Total	Size distribution in CV [%]
200	1,000	472	13,601.13	9,761.7	54,401.2	 83	39.1

Assay Class: High Sensitivity DNA Assay
 Data Path: C:\... bioanalyzer\2100 expert\data\2019-08-13\2019-08-13_001.xad

Created: 8/13/2019 12:39:08 PM
 Modified: 8/13/2019 1:20:25 PM

Electropherogram Summary Continued ...



Overall Results for sample 7 : sample 7

Number of peaks found: 26 Corr. Area 1: 7,613.8
 Noise: 0.3

Peak table for sample 7 : sample 7

Peak	Size [bp]	Conc. [pg/μl]	Molarity [pmol/l]	Observations	Aligned Migration Time [s]
1	35	125.00	5,411.3	Lower Marker	43.00
2	217	1,639.62	11,460.9		62.50
3	228	246.57	1,637.5		63.58
4	249	405.18	2,469.0		65.51
5	273	581.18	3,224.1		67.82
6	303	722.57	3,610.1		70.61
7	316	247.83	1,187.6		71.63
8	332	350.97	1,602.5		72.87
9	364	403.02	1,678.4		75.39
10	384	404.11	1,593.5		77.01
11	405	390.88	1,463.5		78.51
12	432	278.90	979.0		80.01
13	460	422.47	1,392.9		81.57
14	491	384.47	1,185.6		83.35
15	518	258.36	756.4		84.69
16	543	300.68	839.4		85.92
17	562	249.12	671.1		86.89
18	583	273.87	711.4		87.91
19	638	196.14	465.5		89.85
20	679	464.97	1,037.3		91.03
21	755	240.53	482.8		92.37
22	815	1,314.68	2,444.9		93.18
23	2,160	64.10	45.0		101.93
24	2,855	57.75	30.6		103.92
25	4,898	10.66	3.3		106.88

Assay Class: High Sensitivity DNA Assay
 Data Path: C:\... bioanalyzer\2100 expert\data\2019-08-13\2019-08-13_001.xad

Created: 8/13/2019 12:39:08 PM
 Modified: 8/13/2019 1:20:25 PM

Electropherogram Summary Continued ...

... Peak table for sample 7 : sample 7

Peak	Size [bp]	Conc. [pg/ μ l]	Molarity [pmol/l]	Observations	Aligned Migration Time [s]
26	6,986	4.41	1.0		109.67
27	10,380	75.00	10.9	Upper Marker	113.00
28	12,902	0.00	0.0		115.47

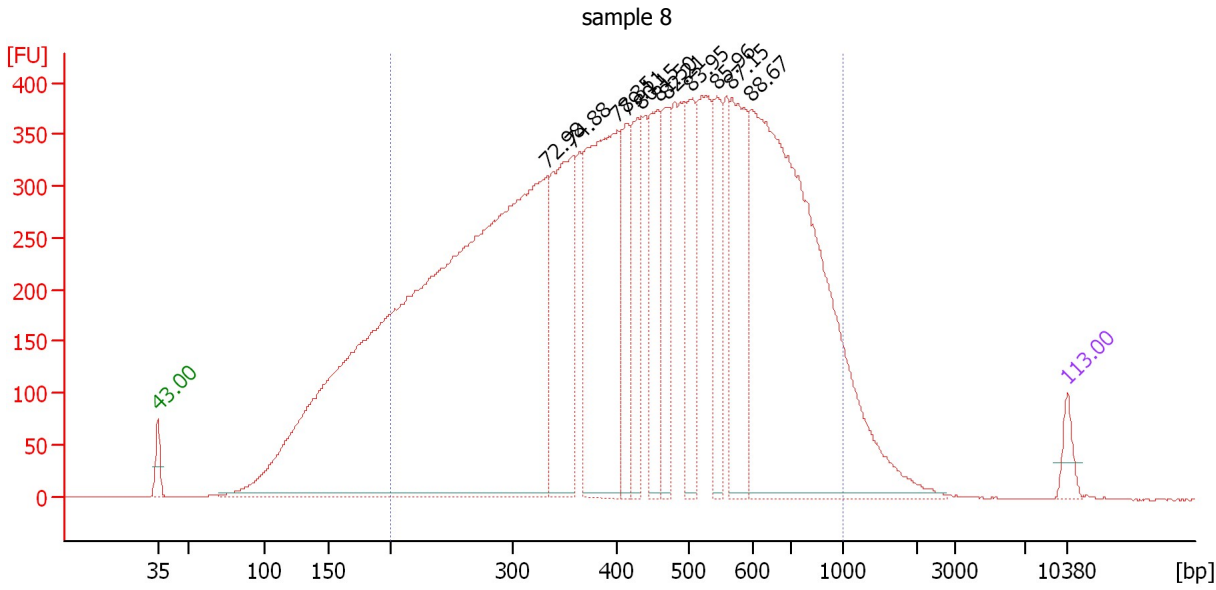
Region table for sample 7 : sample 7

From [bp]	To [bp]	Average Size [bp]	Conc. [pg/ μ l]	Corr. Area	Molarity [pmol/l]	Co % of lor Total	Size distribution in CV [%]
200	1,000	487	9,336.42	7,613.8	36,364.1	81	39.0

Assay Class: High Sensitivity DNA Assay
 Data Path: C:\... bioanalyzer\2100 expert\data\2019-08-13\2019-08-13_001.xad

Created: 8/13/2019 12:39:08 PM
 Modified: 8/13/2019 1:20:25 PM

Electropherogram Summary Continued ...



Overall Results for sample 8 : sample 8

Number of peaks found: 11 Corr. Area 1: 13,723.5
 Noise: 0.3

Peak table for sample 8 : sample 8

Peak	Size [bp]	Conc. [pg/μl]	Molarity [pmol/l]	Observations	Aligned Migration Time [s]
1	35	125.00	5,411.3	Lower Marker	43.00
2	333	7,902.56	35,934.8		72.98
3	357	1,162.87	4,931.5		74.88
4	402	1,705.80	6,431.6		78.35
5	415	422.29	1,540.0		79.11
6	434	520.76	1,818.2		80.15
7	458	588.30	1,944.9		81.50
8	471	425.59	1,369.2		82.21
9	502	553.46	1,669.2		83.95
10	543	429.89	1,198.7		85.96
11	568	786.25	2,098.1		87.15
12	599	3,361.00	8,504.2		88.67
13	10,380	75.00	10.9	Upper Marker	113.00

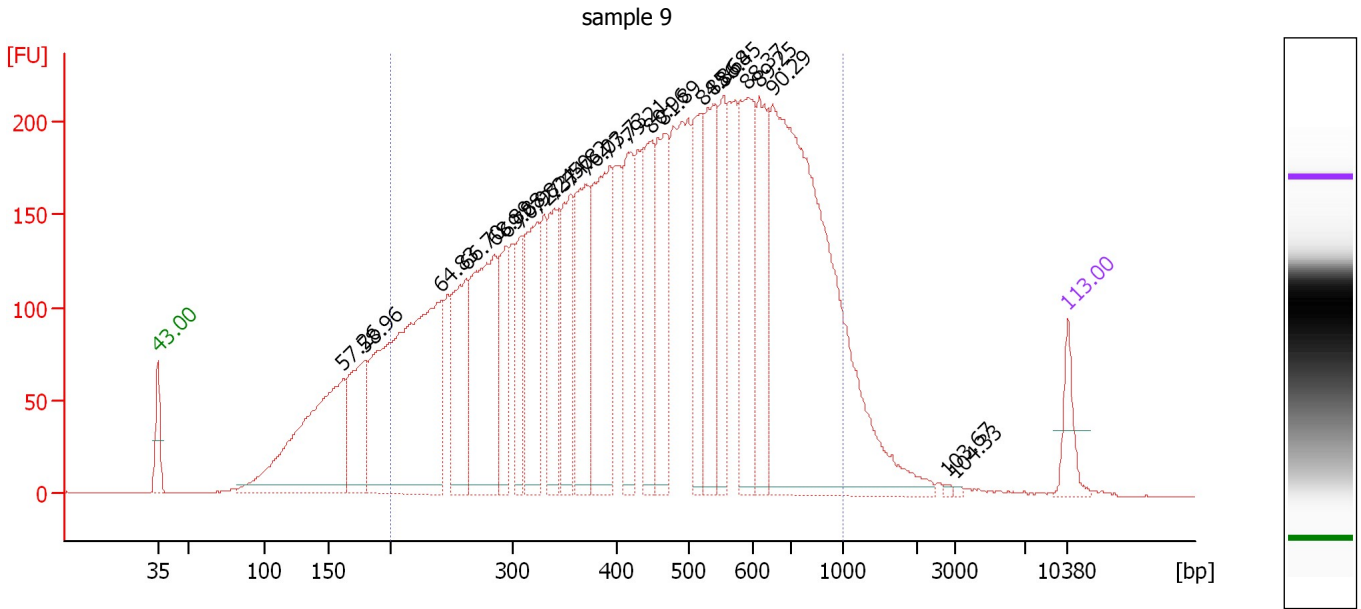
Region table for sample 8 : sample 8

From [bp]	To [bp]	Average Size [bp]	Conc. [pg/μl]	Corr. Area	Molarity [pmol/l]	Co % of lor Total	Size distribution in CV [%]
200	1,000	459	18,690.75	13,723.5	75,876.2	86	38.1

Assay Class: High Sensitivity DNA Assay
 Data Path: C:\... bioanalyzer\2100 expert\data\2019-08-13\2019-08-13_001.xad

Created: 8/13/2019 12:39:08 PM
 Modified: 8/13/2019 1:20:25 PM

Electropherogram Summary Continued ...



Overall Results for sample 9 : sample 9

Number of peaks found: 23 Corr. Area 1: 7,119.1
 Noise: 0.3

Peak table for sample 9 : sample 9

Peak	Size [bp]	Conc. [pg/μl]	Molarity [pmol/l]	Observations	Aligned Migration Time [s]
1	35	125.00	5,411.3	Lower Marker	43.00
2	162	845.42	7,907.8		57.26
3	180	322.18	2,717.0		58.96
4	241	1,330.28	8,346.7		64.83
5	261	366.39	2,124.9		66.70
6	285	631.93	3,365.4		68.89
7	295	230.81	1,185.6		69.88
8	308	217.94	1,072.5		70.98
9	324	370.18	1,731.8		72.24
10	340	292.94	1,306.0		73.50
11	357	326.71	1,388.4		74.82
12	372	381.50	1,554.6		76.03
13	393	551.11	2,122.7		77.73
14	417	302.21	1,097.6		79.21
15	449	306.79	1,036.2		80.96
16	465	327.39	1,066.0		81.89
17	521	290.59	845.1		84.86
18	538	361.71	1,019.1		85.68
19	553	251.77	689.3		86.45
20	593	391.68	1,001.4		88.37
21	618	300.15	736.1		89.25
22	654	1,751.26	4,059.0		90.29
23	2,769	4.71	2.6		103.67
24	2,999	3.59	1.8		104.33
25	10,380	75.00	10.9	Upper Marker	113.00

Assay Class: High Sensitivity DNA Assay
Data Path: C:\... bioanalyzer\2100 expert\data\2019-08-13\2019-08-13_001.xad

Created: 8/13/2019 12:39:08 PM
Modified: 8/13/2019 1:20:25 PM

Electropherogram Summary Continued ...

... Region table for sample 9 :

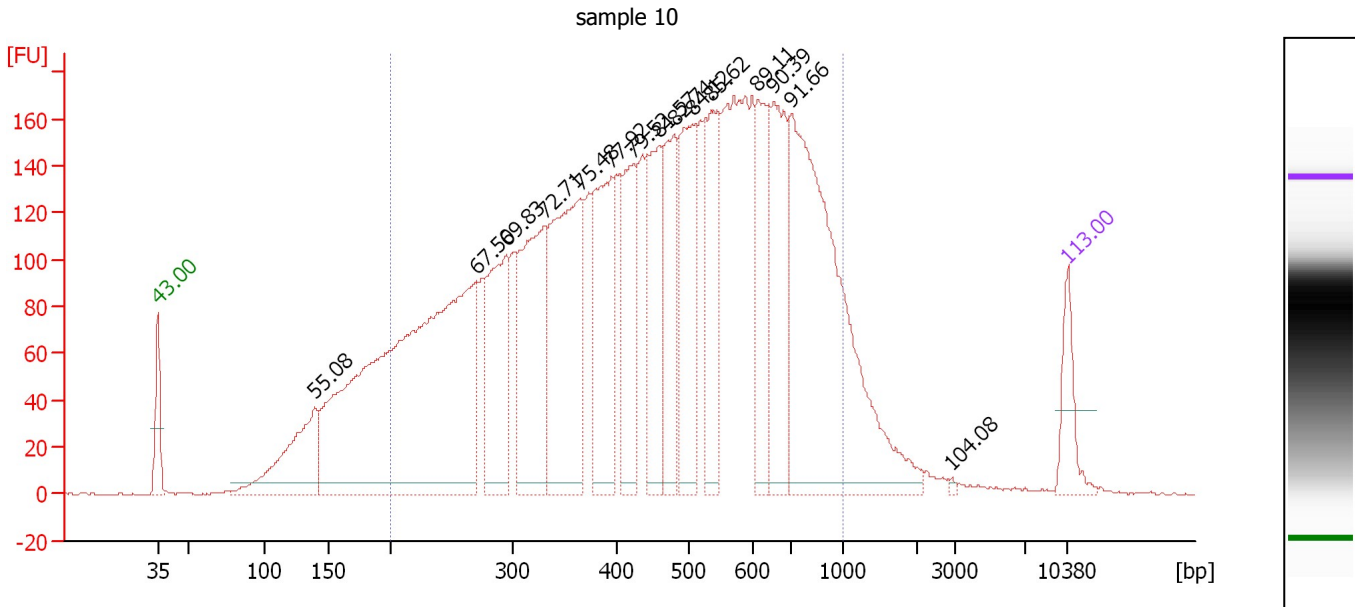
sample 9

From [bp]	To [bp]	Average Size [bp]	Conc. [pg/ μ l]	Corr. Area	Molarity [pmol/l]	Co % of lor Total	Size distribution in CV [%]
200	1,000	476	10,293.82	7,119.1	40,596.6	 85	38.1

Assay Class: High Sensitivity DNA Assay
 Data Path: C:\... bioanalyzer\2100 expert\data\2019-08-13\2019-08-13_001.xad

Created: 8/13/2019 12:39:08 PM
 Modified: 8/13/2019 1:20:25 PM

Electropherogram Summary Continued ...



Overall Results for sample 10 : sample 10

Number of peaks found: 15 Corr. Area 1: 5,480.9
 Noise: 0.3

Peak table for sample 10 : sample 10

Peak	Size [bp]	Conc. [pg/μl]	Molarity [pmol/l]	Observations	Aligned Migration Time [s]
1	35	125.00	5,411.3	Lower Marker	43.00
2	140	318.12	3,452.7		55.08
3	270	1,638.79	9,206.4		67.50
4	294	341.33	1,756.8		69.83
5	330	471.02	2,164.0		72.71
6	365	560.40	2,327.0		75.48
7	396	367.87	1,408.3		77.92
8	423	259.31	929.2		79.52
9	460	278.28	917.4		81.57
10	480	245.38	773.8		82.74
11	506	297.42	890.5		84.12
12	537	233.39	659.0		85.62
13	613	218.94	541.0		89.11
14	657	296.20	683.0		90.39
15	702	966.66	2,085.8		91.66
16	2,910	3.72	1.9		104.08
17	10,380	75.00	10.9	Upper Marker	113.00

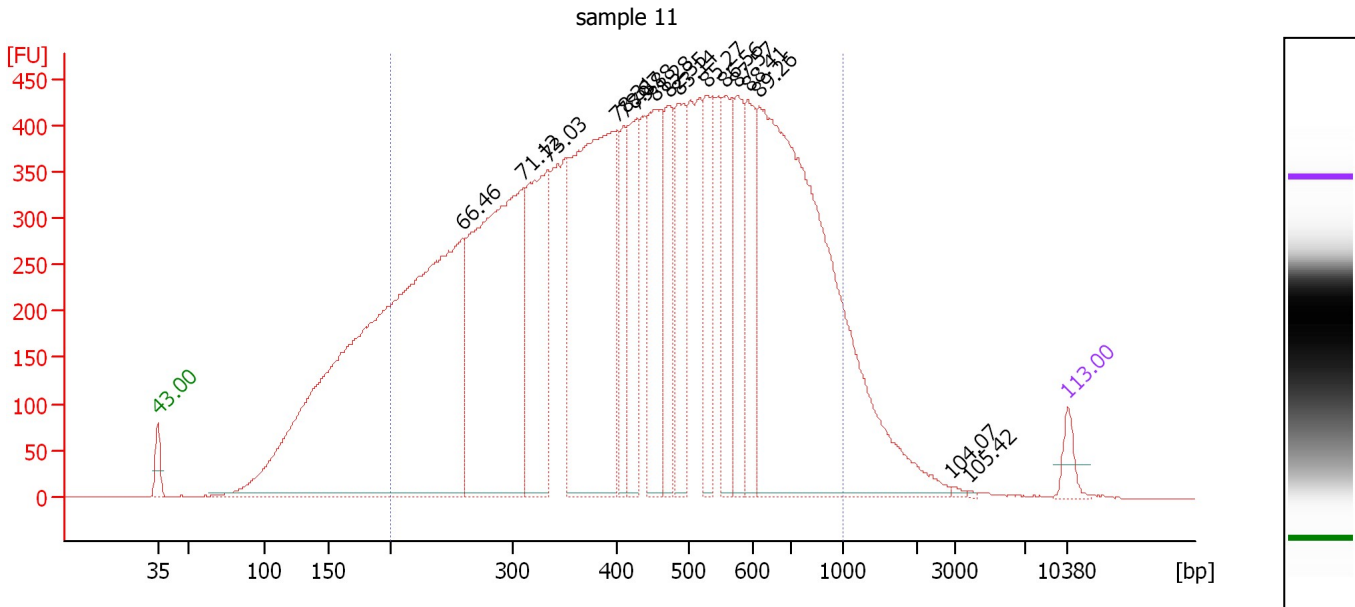
Region table for sample 10 : sample 10

From [bp]	To [bp]	Average Size [bp]	Conc. [pg/μl]	Corr. Area	Molarity [pmol/l]	Co % of Ior Total	Size distribution in CV [%]
200	1,000	481	6,876.18	5,480.9	26,883.8	85	38.2

Assay Class: High Sensitivity DNA Assay
 Data Path: C:\... bioanalyzer\2100 expert\data\2019-08-13\2019-08-13_001.xad

Created: 8/13/2019 12:39:08 PM
 Modified: 8/13/2019 1:20:25 PM

Electropherogram Summary Continued ...



Overall Results for sample 11 : sample 11

Number of peaks found: 16 Corr. Area 1: 15,442.6
 Noise: 0.3

Peak table for sample 11 : sample 11

Peak	Size [bp]	Conc. [pg/μl]	Molarity [pmol/l]	Observations	Aligned Migration Time [s]
1	35	125.00	5,411.3	Lower Marker	43.00
2	259	5,897.28	34,531.1		66.46
3	310	2,783.25	13,615.4		71.12
4	334	1,171.97	5,318.0		73.03
5	401	2,354.10	8,893.4		78.31
6	411	459.48	1,693.4		78.87
7	429	495.72	1,749.9		79.88
8	454	786.08	2,621.2		81.28
9	473	569.46	1,822.2		82.35
10	488	568.45	1,766.5		83.14
11	529	514.83	1,473.5		85.27
12	556	494.31	1,347.7		86.56
13	576	509.71	1,339.9		87.57
14	594	520.78	1,329.4		88.41
15	618	3,676.76	9,012.7		89.26
16	2,909	10.96	5.7		104.07
17	3,812	4.68	1.9		105.42
18	10,380	75.00	10.9	Upper Marker	113.00

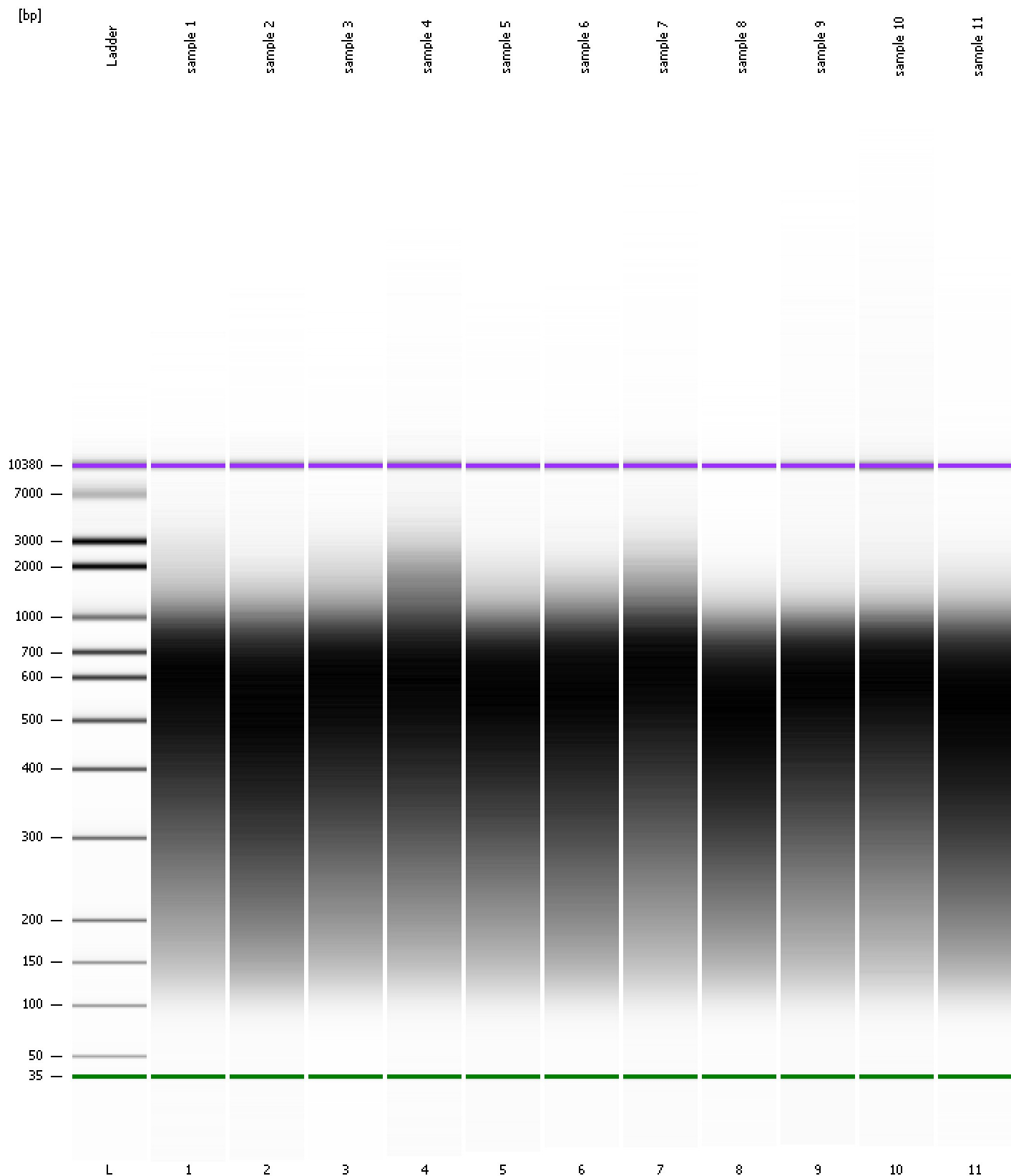
Region table for sample 11 : sample 11

From [bp]	To [bp]	Average Size [bp]	Conc. [pg/μl]	Corr. Area	Molarity [pmol/l]	Co % of lor Total	Size distribution in CV [%]
200	1,000	461	20,206.08	15,442.6	82,080.8	84	38.8

Assay Class: High Sensitivity DNA Assay
Data Path: C:\... bioanalyzer\2100 expert\data\2019-08-13\2019-08-13_001.xad

Created: 8/13/2019 12:39:08 PM
Modified: 8/13/2019 1:20:25 PM

Gel Image



Assay Class: High Sensitivity DNA Assay
 Data Path: C:\... bioanalyzer\2100 expert\data\2019-08-13\2019-08-13_001.xad

Created: 8/13/2019 12:39:08 PM
 Modified: 8/13/2019 1:20:25 PM

Run Logbook

Description	Number	Source	Category	Sub Category	Time	Time Zone	User	Host
Run ended on port 1 (Number of wells acquired: 12)		Instrument	Run		8/13/2019 1:20:25 PM	(GMT --07:00) Pacific Standard Time	UC Davis	D8XSMGH1
Run started on port 1 (File: C:\Program Files\Agilent\2100 bioanalyzer\2100 expert\data\2019-08-13\2019-08-13_001.xad)		Instrument	Run		8/13/2019 12:39:14 PM	(GMT --07:00) Pacific Standard Time	UC Davis	D8XSMGH1
Product Number : G2938C		Instrument	Run		8/13/2019 12:39:14 PM	(GMT --07:00) Pacific Standard Time	UC Davis	D8XSMGH1
Name :		Instrument	Run		8/13/2019 12:39:14 PM	(GMT --07:00) Pacific Standard Time	UC Davis	D8XSMGH1
Vendor : Agilent Technologies		Instrument	Run		8/13/2019 12:39:14 PM	(GMT --07:00) Pacific Standard Time	UC Davis	D8XSMGH1
Serial# : DE34903152		Instrument	Run		8/13/2019 12:39:14 PM	(GMT --07:00) Pacific Standard Time	UC Davis	D8XSMGH1
Firmware : C.01.069		Instrument	Run		8/13/2019 12:39:14 PM	(GMT --07:00) Pacific Standard Time	UC Davis	D8XSMGH1
Cartridge : Electrode		Instrument	Run		8/13/2019 12:39:14 PM	(GMT --07:00) Pacific Standard Time	UC Davis	D8XSMGH1