

Assay Class: High Sensitivity DNA Assay
Data Path: C:\... bioanalyzer\2100 expert\data\2018-09-13\2018-09-13_001.xad

Created: 9/13/2018 1:32:27 PM
Modified: 9/13/2018 2:13:45 PM

Electrophoresis File Run Summary

Instrument Information:

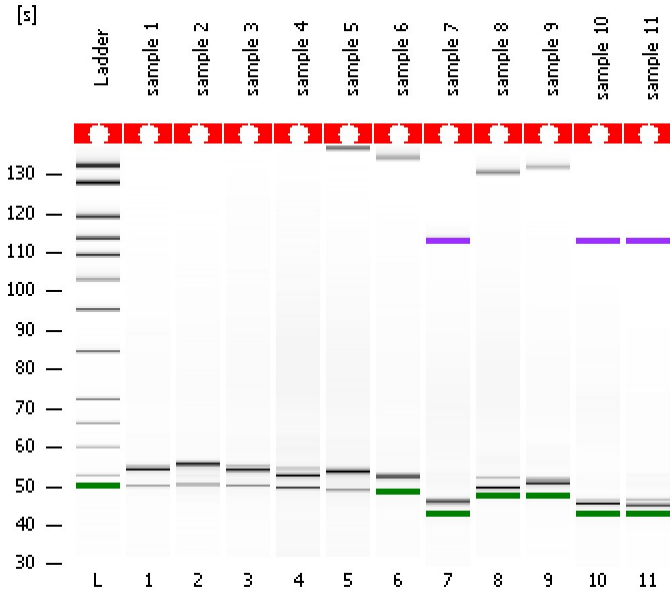
Instrument Name: DE34903152 Firmware: C.01.069
Serial#: DE34903152 Type: G2938C

Assay Information:

Assay Origin Path: C:\Program Files\Agilent\2100 bioanalyzer\2100 expert\assays\dsDNA\High Sensitivity DNA.xsy
Assay Class: High Sensitivity DNA Assay
Version: 1.03
Assay Comments: Copyright © 2003-2010 Agilent Technologies

Chip Information:

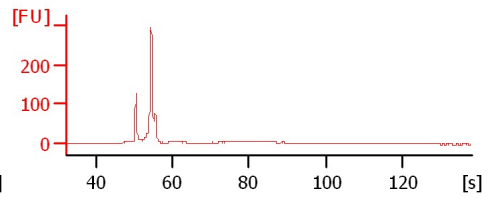
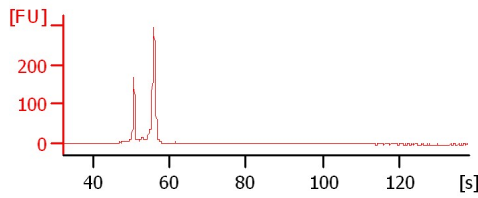
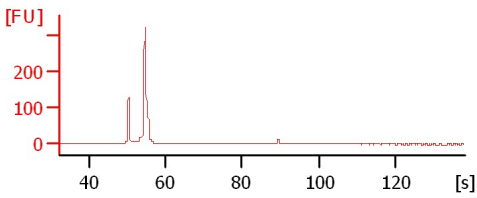
Chip Lot #: Reagent Kit Lot #: Chip Comments:



sample 1

sample 2

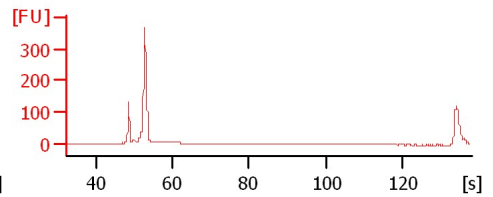
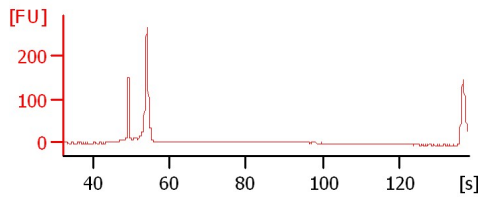
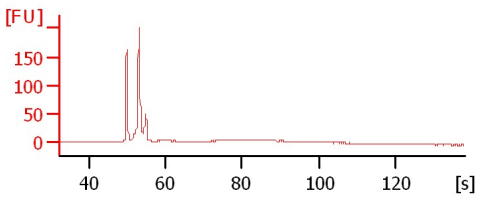
sample 3



sample 4

sample 5

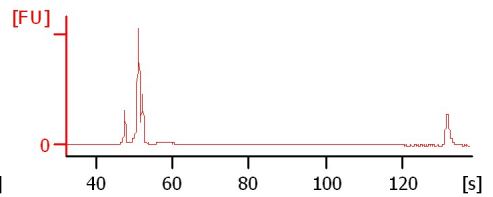
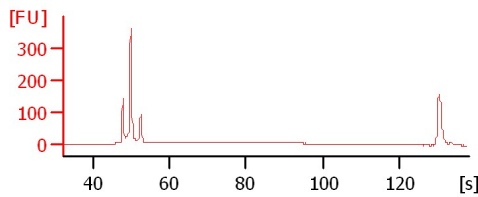
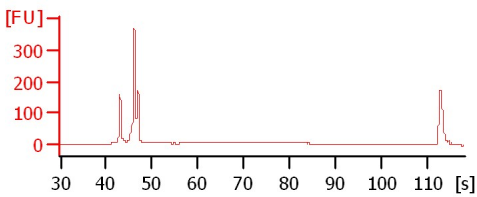
sample 6



sample 7

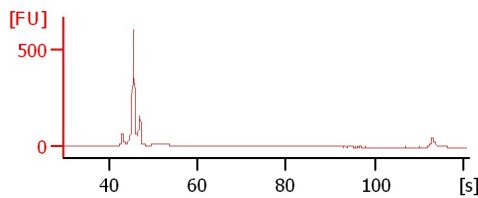
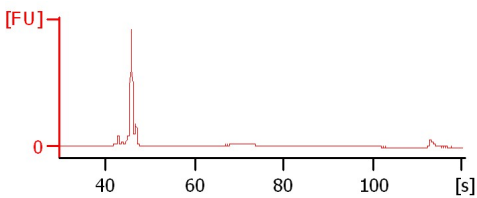
sample 8

sample 9



sample 10

sample 11



Assay Class: High Sensitivity DNA Assay
Data Path: C:\... bioanalyzer\2100 expert\data\2018-09-13\2018-09-13_001.xad

Created: 9/13/2018 1:32:27 PM
Modified: 9/13/2018 2:13:45 PM

Electrophoresis File Run Summary (Chip Summary)

Sample Name	Sample Comment	Rest. Digest	Status	Observation	Result Label	Result Color
sample 1		<input type="checkbox"/>	✓			
sample 2		<input type="checkbox"/>	✓			
sample 3		<input type="checkbox"/>	✓			
sample 4		<input type="checkbox"/>	✓			
sample 5		<input type="checkbox"/>	✓			
sample 6		<input type="checkbox"/>	✓			
sample 7		<input type="checkbox"/>	✓			
sample 8		<input type="checkbox"/>	✓			
sample 9		<input type="checkbox"/>	✓			
sample 10		<input type="checkbox"/>	✓			
sample 11		<input type="checkbox"/>	✓			
Ladder		<input type="checkbox"/>	✓			

Chip Lot #

Reagent Kit Lot #

Chip Comments :

Assay Class: High Sensitivity DNA Assay
Data Path: C:\... bioanalyzer\2100 expert\data\2018-09-13\2018-09-13_001.xad

Created: 9/13/2018 1:32:27 PM
Modified: 9/13/2018 2:13:45 PM

Electrophoresis Assay Details

General Analysis Settings

Number of Available Sample and Ladder Wells (Max.) : 12
Minimum Visible Range [s] : 32
Maximum Visible Range [s] : 138
Start Analysis Time Range [s] : 33
End Analysis Time Range [s] : 137.5
Ladder Concentration [pg/μl] : 1950
Uses Standard Area for Ladder Fragments
Lower Marker Concentration [pg/μl] : 125
Upper Marker Concentration [pg/μl] : 75
Used Upper Marker for Quantitation
Standard Curve Fit is Point to Point
Show Data Aligned to Lower and Upper Marker

Integrator Settings

Integration Start Time [s] : 33.05
Integration End Time [s] : 137
Slope Threshold : 0.8
Height Threshold [FU] : 5
Area Threshold : 0.1
Width Threshold [s] : 0.6
Baseline Plateau [s] : 0.5

Filter Settings

Filter Width [s] : 0.5
Polynomial Order : 4

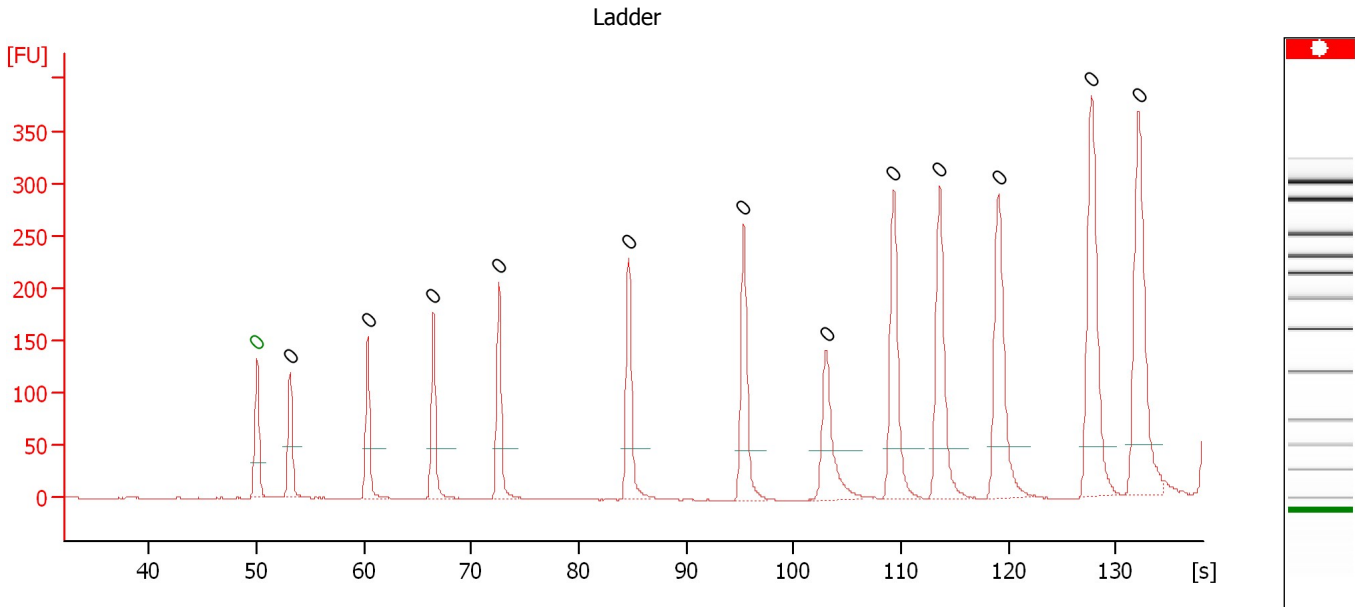
Ladder

Ladder Peak	Size	Area
1	35	160
2	50	210
3	100	208
4	150	221
5	200	242
6	300	270
7	400	305
8	500	306
9	600	336
10	700	321
11	1000	366
12	2000	413
13	3000	411
14	7000	400
15	10380	214

Assay Class: High Sensitivity DNA Assay
 Data Path: C:\... bioanalyzer\2100 expert\data\2018-09-13\2018-09-13_001.xad

Created: 9/13/2018 1:32:27 PM
 Modified: 9/13/2018 2:13:45 PM

Electropherogram Summary



Overall Results for Ladder

Noise: 0.4

Peak table for Ladder

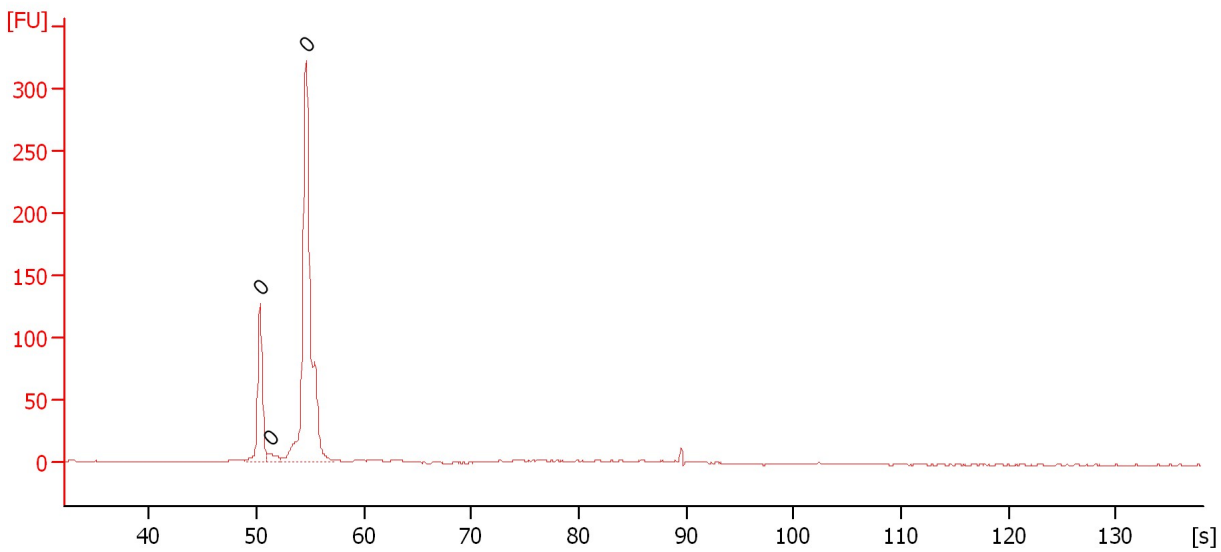
Peak #	Size [bp]	Conc. [pg/μl]	Molarity [pmol/l]	Observations	Aligned Migration Time [s]
1	0	0.00	0.0	Lower Marker	50.05
2	0	0.00	0.0	Ladder Peak	53.10
3	0	0.00	0.0	Ladder Peak	60.35
4	0	0.00	0.0	Ladder Peak	66.45
5	0	0.00	0.0	Ladder Peak	72.55
6	0	0.00	0.0	Ladder Peak	84.65
7	0	0.00	0.0	Ladder Peak	95.35
8	0	0.00	0.0	Ladder Peak	103.05
9	0	0.00	0.0	Ladder Peak	109.30
10	0	0.00	0.0	Ladder Peak	113.60
11	0	0.00	0.0	Ladder Peak	119.05
12	0	0.00	0.0	Ladder Peak	127.70
13	0	0.00	0.0	Ladder Peak	132.10

Assay Class: High Sensitivity DNA Assay
Data Path: C:\... bioanalyzer\2100 expert\data\2018-09-13\2018-09-13_001.xad

Created: 9/13/2018 1:32:27 PM
Modified: 9/13/2018 2:13:45 PM

Electropherogram Summary Continued ...

sample 1



Overall Results for sample 1 : sample 1

Number of peaks found: 0 Noise: 0.4

Peak table for sample 1 : sample 1

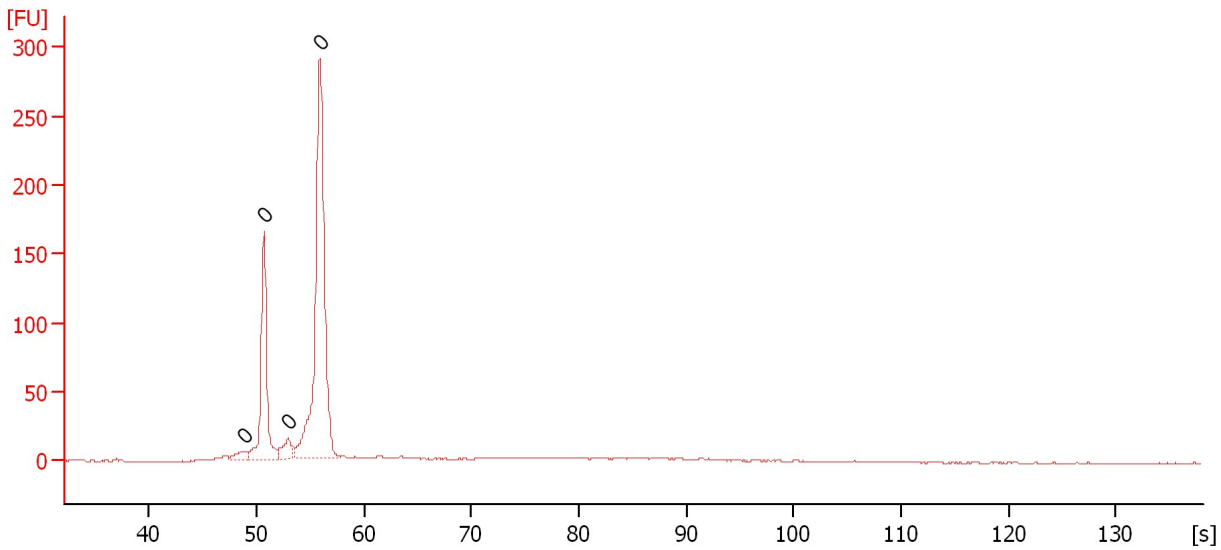
Peak	Size [bp]	Conc. [pg/μl]	Molarity [pmol/l]	Observations	Aligned Migration Time [s]
1	0	0.00	0.0		50.35
2	0	0.00	0.0		51.20
3	0	0.00	0.0		54.60

Assay Class: High Sensitivity DNA Assay
Data Path: C:\... bioanalyzer\2100 expert\data\2018-09-13\2018-09-13_001.xad

Created: 9/13/2018 1:32:27 PM
Modified: 9/13/2018 2:13:45 PM

Electropherogram Summary Continued ...

sample 2



Overall Results for sample 2 : sample 2

Number of peaks found: 0 Noise: 0.4

Peak table for sample 2 : sample 2

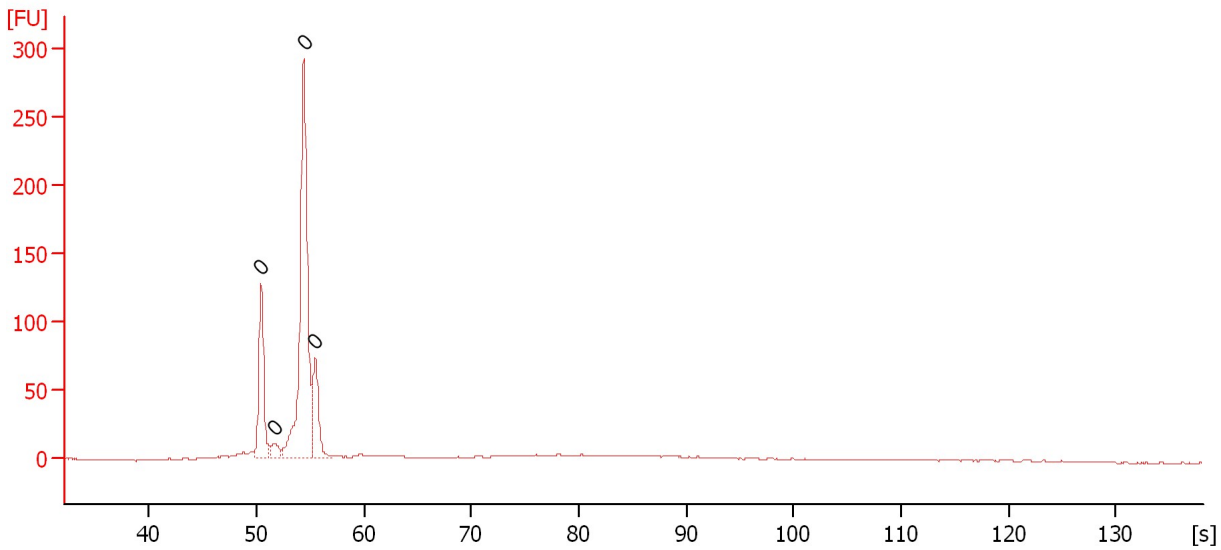
Peak	Size [bp]	Conc. [pg/μl]	Molarity [pmol/l]	Observations	Aligned Migration Time [s]
1	0	0.00	0.0		48.90
2	0	0.00	0.0		50.70
3	0	0.00	0.0		52.95
4	0	0.00	0.0		55.90

Assay Class: High Sensitivity DNA Assay
Data Path: C:\... bioanalyzer\2100 expert\data\2018-09-13\2018-09-13_001.xad

Created: 9/13/2018 1:32:27 PM
Modified: 9/13/2018 2:13:45 PM

Electropherogram Summary Continued ...

sample 3



Overall Results for sample 3 : sample 3

Number of peaks found: 0 Noise: 0.4

Peak table for sample 3 : sample 3

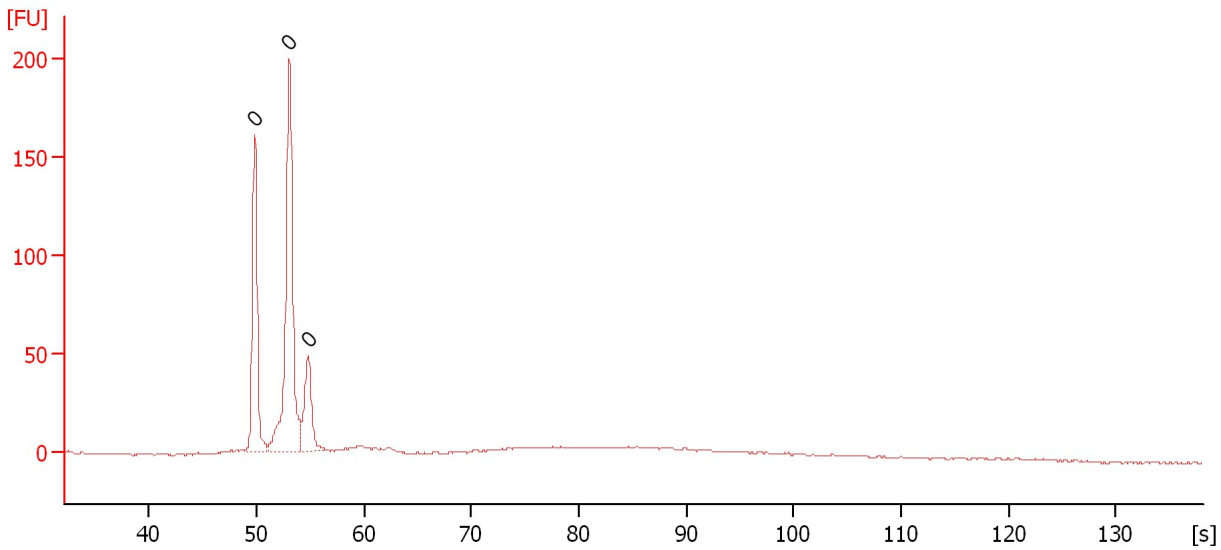
Peak	Size [bp]	Conc. [pg/μl]	Molarity [pmol/l]	Observations	Aligned Migration Time [s]
1	0	0.00	0.0		50.45
2	0	0.00	0.0		51.65
3	0	0.00	0.0		54.40
4	0	0.00	0.0		55.45

Assay Class: High Sensitivity DNA Assay
Data Path: C:\... bioanalyzer\2100 expert\data\2018-09-13\2018-09-13_001.xad

Created: 9/13/2018 1:32:27 PM
Modified: 9/13/2018 2:13:45 PM

Electropherogram Summary Continued ...

sample 4



Overall Results for sample 4 : sample 4

Number of peaks found: 0 Noise: 0.4

Peak table for sample 4 : sample 4

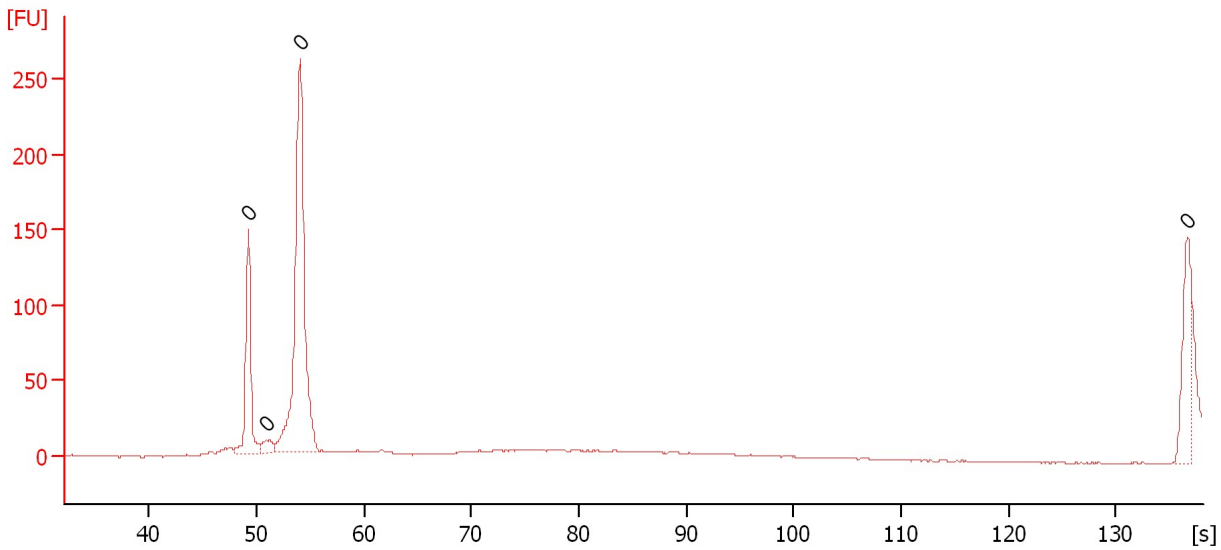
Peak	Size [bp]	Conc. [pg/μl]	Molarity [pmol/l]	Observations	Aligned Migration Time [s]
1	0	0.00	0.0		49.85
2	0	0.00	0.0		53.05
3	0	0.00	0.0		54.80

Assay Class: High Sensitivity DNA Assay
Data Path: C:\... bioanalyzer\2100 expert\data\2018-09-13\2018-09-13_001.xad

Created: 9/13/2018 1:32:27 PM
Modified: 9/13/2018 2:13:45 PM

Electropherogram Summary Continued ...

sample 5



Overall Results for sample 5 : sample 5

Number of peaks found: 0 Noise: 0.4

Peak table for sample 5 : sample 5

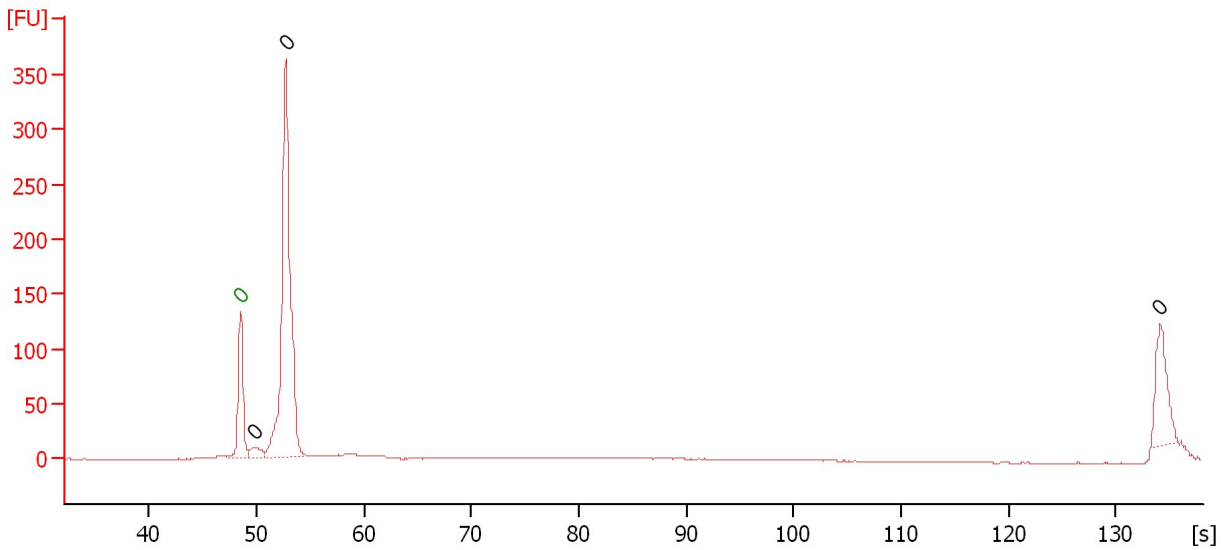
Peak	Size [bp]	Conc. [pg/μl]	Molarity [pmol/l]	Observations	Aligned Migration Time [s]
1	0	0.00	0.0		49.25
2	0	0.00	0.0		50.90
3	0	0.00	0.0		54.05
4	0	0.00	0.0		136.65

Assay Class: High Sensitivity DNA Assay
Data Path: C:\... bioanalyzer\2100 expert\data\2018-09-13\2018-09-13_001.xad

Created: 9/13/2018 1:32:27 PM
Modified: 9/13/2018 2:13:45 PM

Electropherogram Summary Continued ...

sample 6



Overall Results for sample 6 : sample 6

Number of peaks found: 3 Noise: 0.4

Peak table for sample 6 : sample 6

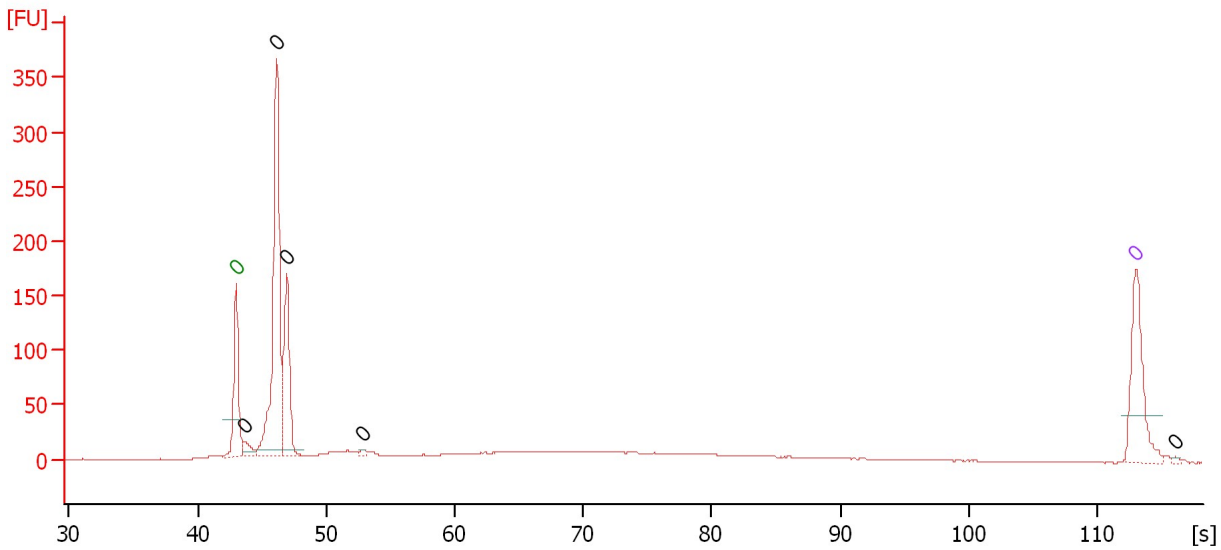
Peak	Size [bp]	Conc. [pg/μl]	Molarity [pmol/l]	Observations	Aligned Migration Time [s]
1	0	0.00	0.0	Lower Marker	48.50
2	0	0.00	0.0		49.80
3	0	0.00	0.0		52.70
4	0	0.00	0.0		134.10

Assay Class: High Sensitivity DNA Assay
 Data Path: C:\... bioanalyzer\2100 expert\data\2018-09-13\2018-09-13_001.xad

Created: 9/13/2018 1:32:27 PM
 Modified: 9/13/2018 2:13:45 PM

Electropherogram Summary Continued ...

sample 7



Overall Results for sample 7 : sample 7

Number of peaks found: 5 Noise: 0.3

Peak table for sample 7 : sample 7

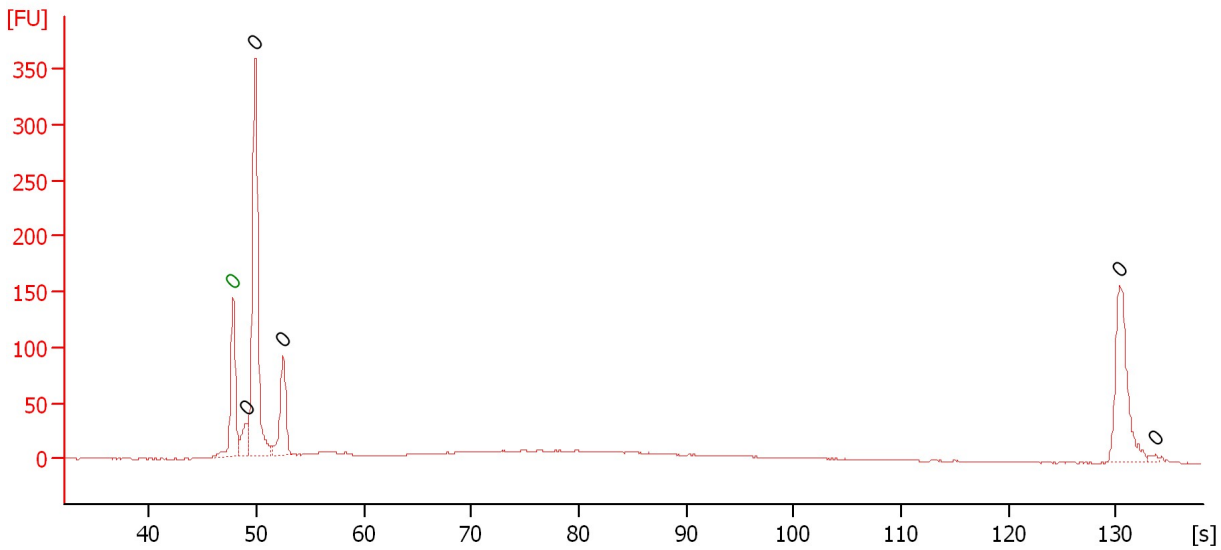
Peak	Size [bp]	Conc. [pg/μl]	Molarity [pmol/l]	Observations	Aligned Migration Time [s]
1	0	0.00	0.0	Lower Marker	43.00
2	0	0.00	0.0		43.63
3	0	0.00	0.0		46.13
4	0	0.00	0.0		46.93
5	0	0.00	0.0		52.86
6	0	0.00	0.0	Upper Marker	113.00
7	0	0.00	0.0		116.05

Assay Class: High Sensitivity DNA Assay
 Data Path: C:\... bioanalyzer\2100 expert\data\2018-09-13\2018-09-13_001.xad

Created: 9/13/2018 1:32:27 PM
 Modified: 9/13/2018 2:13:45 PM

Electropherogram Summary Continued ...

sample 8



Overall Results for sample 8 : sample 8

Number of peaks found: 5 Noise: 0.3

Peak table for sample 8 : sample 8

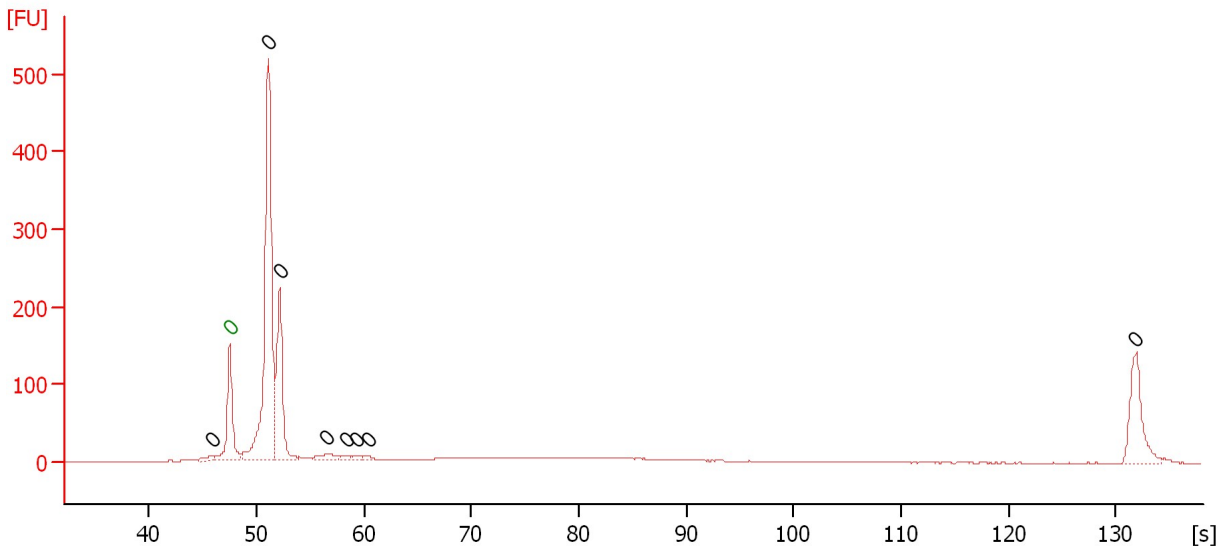
Peak	Size [bp]	Conc. [pg/μl]	Molarity [pmol/l]	Observations	Aligned Migration Time [s]
1	0	0.00	0.0	Lower Marker	47.80
2	0	0.00	0.0		49.05
3	0	0.00	0.0		49.85
4	0	0.00	0.0		52.50
5	0	0.00	0.0		130.35
6	0	0.00	0.0		133.70

Assay Class: High Sensitivity DNA Assay
 Data Path: C:\... bioanalyzer\2100 expert\data\2018-09-13\2018-09-13_001.xad

Created: 9/13/2018 1:32:27 PM
 Modified: 9/13/2018 2:13:45 PM

Electropherogram Summary Continued ...

sample 9



Overall Results for sample 9 : sample 9

Number of peaks found: 8 Noise: 0.3

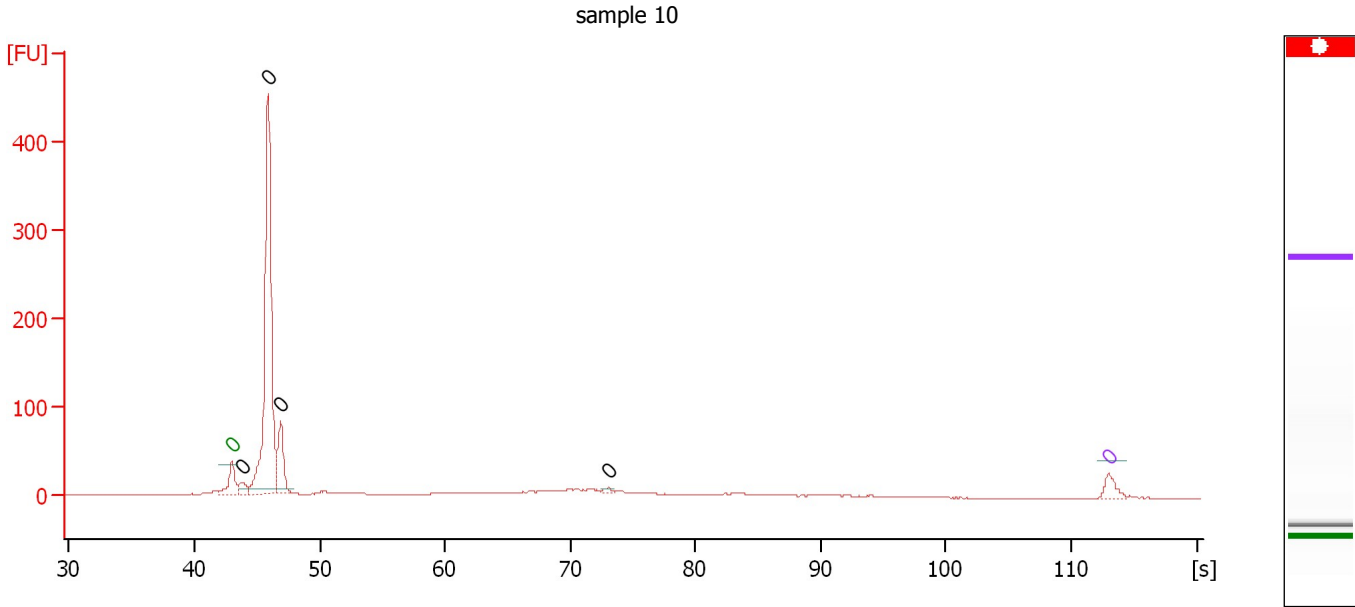
Peak table for sample 9 : sample 9

Peak	Size [bp]	Conc. [pg/μl]	Molarity [pmol/l]	Observations	Aligned Migration Time [s]
1	0	0.00	0.0		45.80
2	0	0.00	0.0	Lower Marker	47.50
3	0	0.00	0.0		51.10
4	0	0.00	0.0		52.15
5	0	0.00	0.0		56.50
6	0	0.00	0.0		58.40
7	0	0.00	0.0		59.35
8	0	0.00	0.0		60.35
9	0	0.00	0.0		131.85

Assay Class: High Sensitivity DNA Assay
 Data Path: C:\... bioanalyzer\2100 expert\data\2018-09-13\2018-09-13_001.xad

Created: 9/13/2018 1:32:27 PM
 Modified: 9/13/2018 2:13:45 PM

Electropherogram Summary Continued ...



Overall Results for sample 10 : sample 10

Number of peaks found: 4 Noise: 0.3

Peak table for sample 10 : sample 10

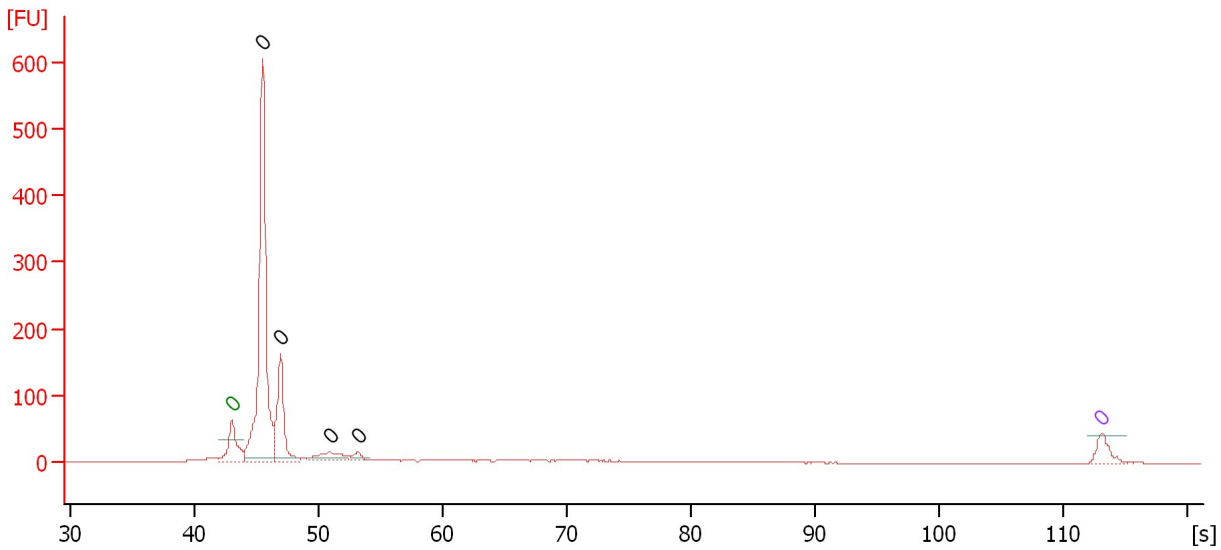
Peak	Size [bp]	Conc. [pg/μl]	Molarity [pmol/l]	Observations	Aligned Migration Time [s]
1	0	0.00	0.0	Lower Marker	43.00
2	0	0.00	0.0		43.86
3	0	0.00	0.0		45.87
4	0	0.00	0.0		46.90
5	0	0.00	0.0		73.05
6	0	0.00	0.0	Upper Marker	113.00

Assay Class: High Sensitivity DNA Assay
Data Path: C:\... bioanalyzer\2100 expert\data\2018-09-13\2018-09-13_001.xad

Created: 9/13/2018 1:32:27 PM
Modified: 9/13/2018 2:13:45 PM

Electropherogram Summary Continued ...

sample 11



Overall Results for sample 11 : sample 11

Number of peaks found: 4 Noise: 0.3

Peak table for sample 11 : sample 11

Peak	Size [bp]	Conc. [pg/μl]	Molarity [pmol/l]	Observations	Aligned Migration Time [s]
1	0	0.00	0.0	Lower Marker	43.00
2	0	0.00	0.0		45.47
3	0	0.00	0.0		46.94
4	0	0.00	0.0		50.87
5	0	0.00	0.0		53.12
6	0	0.00	0.0	Upper Marker	113.00

Assay Class: High Sensitivity DNA Assay
Data Path: C:\... bioanalyzer\2100 expert\data\2018-09-13\2018-09-13_001.xad

Created: 9/13/2018 1:32:27 PM
Modified: 9/13/2018 2:13:45 PM

Gel Image

