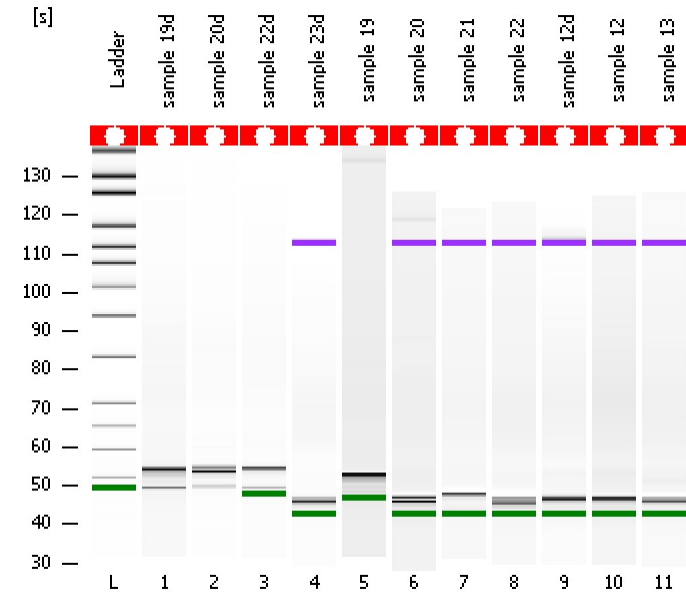


Assay Class: High Sensitivity DNA Assay
Data Path: C:\... bioanalyzer\2100 expert\data\2018-09-13\2018-09-13_002.xad

Created: 9/13/2018 2:33:49 PM
Modified: 9/13/2018 3:14:17 PM

Electrophoresis File Run Summary



Instrument Information:

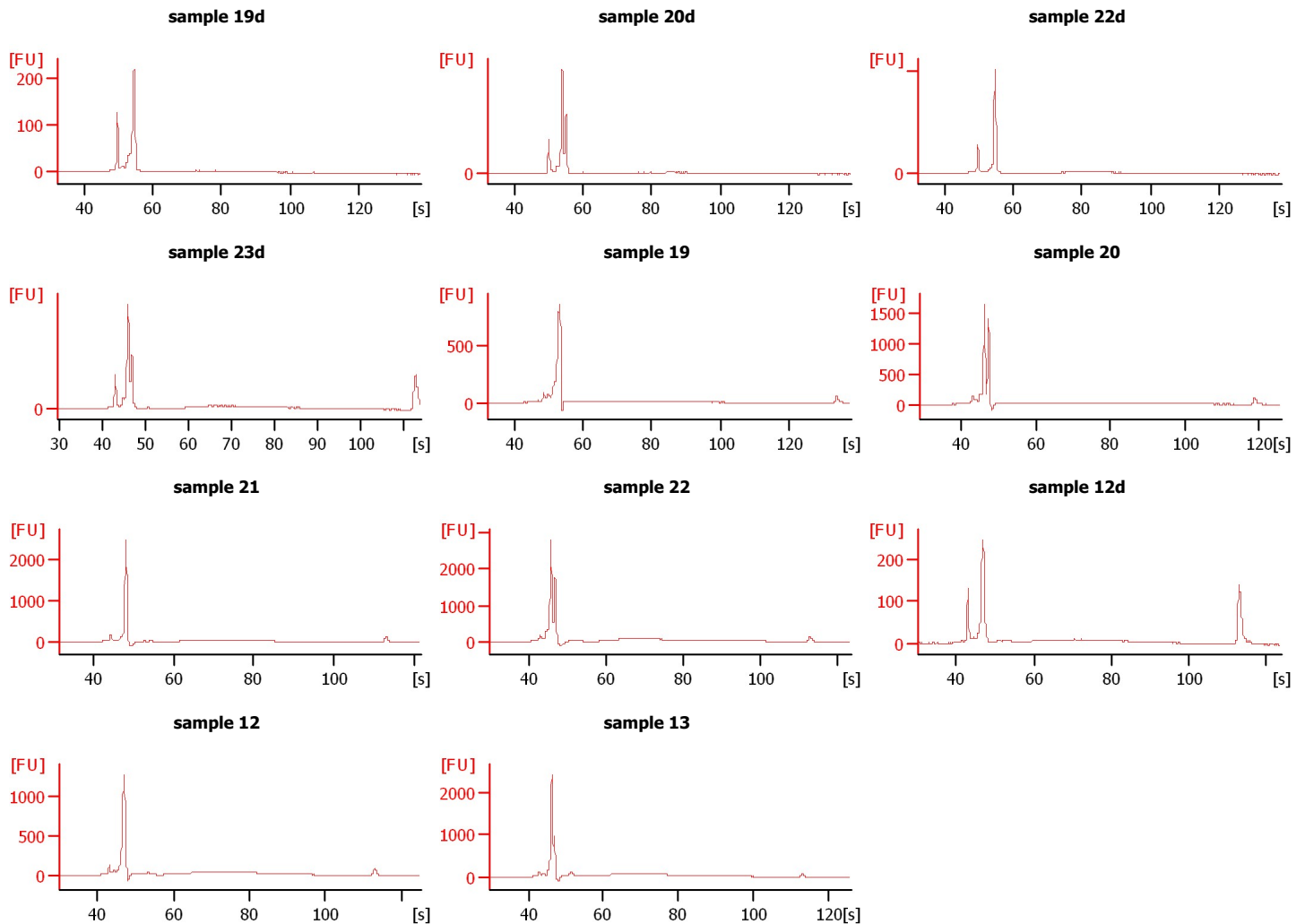
Instrument Name: DE34903152 Firmware: C.01.069
Serial#: DE34903152 Type: G2938C

Assay Information:

Assay Origin Path: C:\Program Files\Agilent\2100 bioanalyzer\2100 expert\assays\dsDNA\High Sensitivity DNA.xsy
Assay Class: High Sensitivity DNA Assay
Version: 1.03
Assay Comments: Copyright © 2003-2010 Agilent Technologies

Chip Information:

Chip Lot #:
Reagent Kit Lot #:
Chip Comments:



Assay Class: High Sensitivity DNA Assay
Data Path: C:\... bioanalyzer\2100 expert\data\2018-09-13\2018-09-13_002.xad

Created: 9/13/2018 2:33:49 PM
Modified: 9/13/2018 3:14:17 PM

Electrophoresis File Run Summary (Chip Summary)

Sample Name	Sample Comment	Rest. Digest	Status	Observation	Result Label	Result Color
sample 19d		<input type="checkbox"/>	✓			
sample 20d		<input type="checkbox"/>	✓			
sample 22d		<input type="checkbox"/>	✓			
sample 23d		<input type="checkbox"/>	✓			
sample 19		<input type="checkbox"/>	✓			
sample 20		<input type="checkbox"/>	✓			
sample 21		<input type="checkbox"/>	✓			
sample 22		<input type="checkbox"/>	✓			
sample 12d		<input type="checkbox"/>	✓			
sample 12		<input type="checkbox"/>	✓			
sample 13		<input type="checkbox"/>	✓			
Ladder		<input type="checkbox"/>	✓			

Chip Lot #

Reagent Kit Lot #

Chip Comments :

Assay Class: High Sensitivity DNA Assay
Data Path: C:\... bioanalyzer\2100 expert\data\2018-09-13\2018-09-13_002.xad

Created: 9/13/2018 2:33:49 PM
Modified: 9/13/2018 3:14:17 PM

Electrophoresis Assay Details

General Analysis Settings

Number of Available Sample and Ladder Wells (Max.) : 12
Minimum Visible Range [s] : 32
Maximum Visible Range [s] : 138
Start Analysis Time Range [s] : 33
End Analysis Time Range [s] : 137.5
Ladder Concentration [pg/μl] : 1950
Uses Standard Area for Ladder Fragments
Lower Marker Concentration [pg/μl] : 125
Upper Marker Concentration [pg/μl] : 75
Used Upper Marker for Quantitation
Standard Curve Fit is Point to Point
Show Data Aligned to Lower and Upper Marker

Integrator Settings

Integration Start Time [s] : 33.05
Integration End Time [s] : 137
Slope Threshold : 0.8
Height Threshold [FU] : 5
Area Threshold : 0.1
Width Threshold [s] : 0.6
Baseline Plateau [s] : 0.5

Filter Settings

Filter Width [s] : 0.5
Polynomial Order : 4

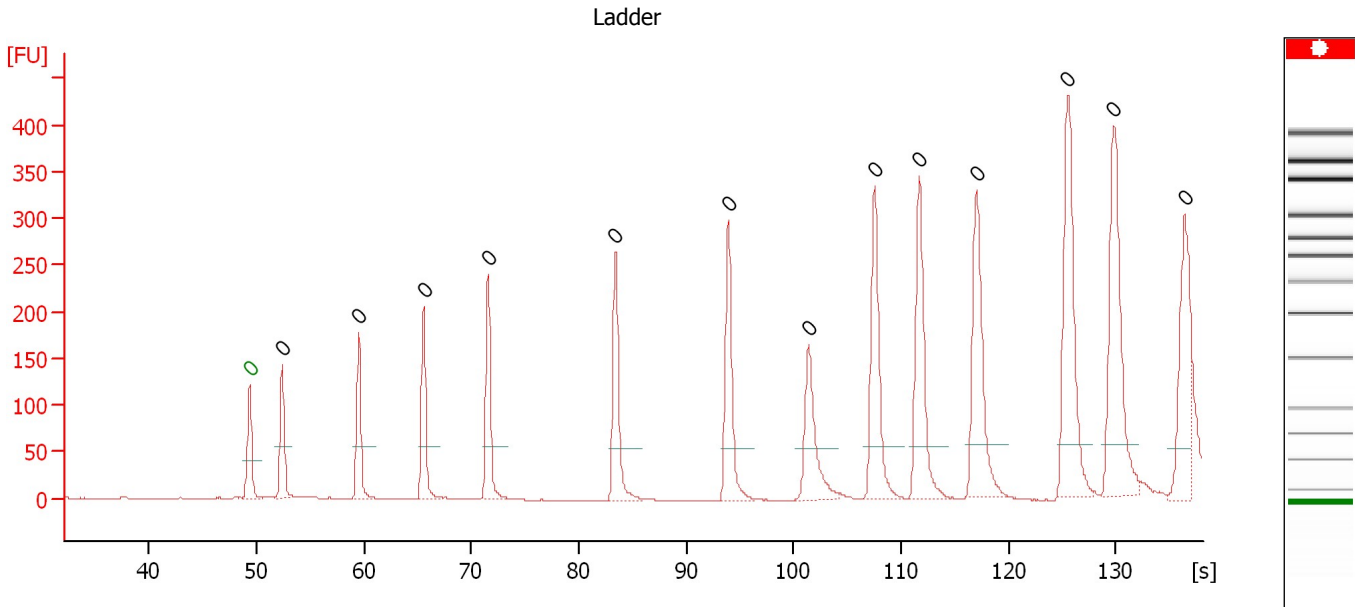
Ladder

Ladder Peak	Size	Area
1	35	160
2	50	210
3	100	208
4	150	221
5	200	242
6	300	270
7	400	305
8	500	306
9	600	336
10	700	321
11	1000	366
12	2000	413
13	3000	411
14	7000	400
15	10380	214

Assay Class: High Sensitivity DNA Assay
 Data Path: C:\... bioanalyzer\2100 expert\data\2018-09-13\2018-09-13_002.xad

Created: 9/13/2018 2:33:49 PM
 Modified: 9/13/2018 3:14:17 PM

Electropherogram Summary



Overall Results for Ladder

Noise: 0.5

Peak table for Ladder

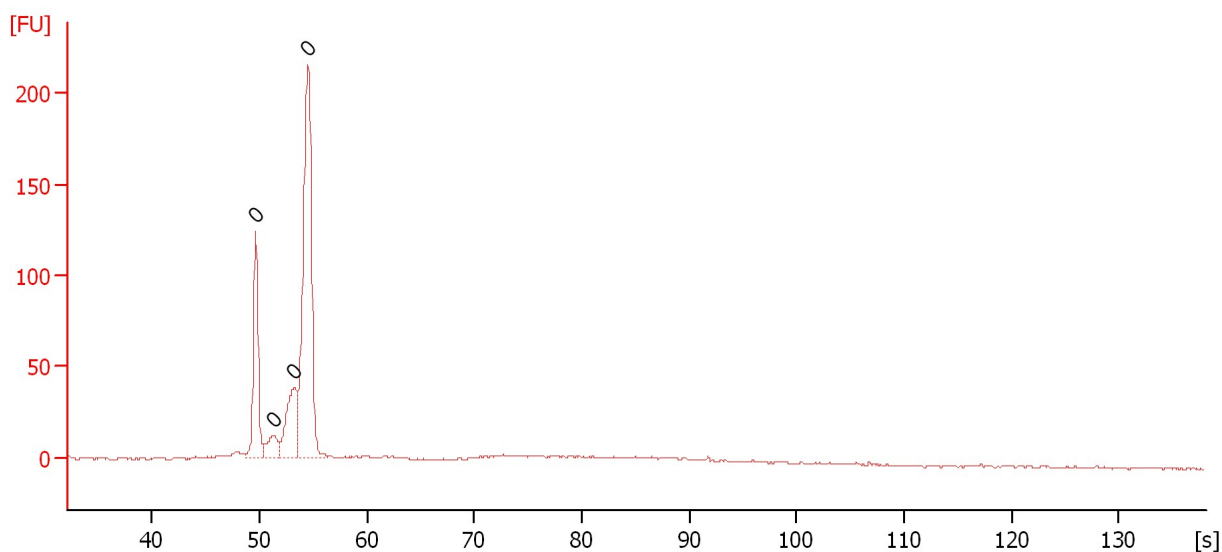
Peak	Size [bp]	Conc. [pg/μl]	Molarity [pmol/l]	Observations	Aligned Migration Time [s]
1	0	0.00	0.0	Lower Marker	49.35
2	0	0.00	0.0	Ladder Peak	52.40
3	0	0.00	0.0	Ladder Peak	59.50
4	0	0.00	0.0	Ladder Peak	65.55
5	0	0.00	0.0	Ladder Peak	71.55
6	0	0.00	0.0	Ladder Peak	83.40
7	0	0.00	0.0	Ladder Peak	93.90
8	0	0.00	0.0	Ladder Peak	101.40
9	0	0.00	0.0	Ladder Peak	107.55
10	0	0.00	0.0	Ladder Peak	111.70
11	0	0.00	0.0	Ladder Peak	117.00
12	0	0.00	0.0	Ladder Peak	125.55
13	0	0.00	0.0	Ladder Peak	129.75
14	0	0.00	0.0	Ladder Peak	136.40

Assay Class: High Sensitivity DNA Assay
 Data Path: C:\... bioanalyzer\2100 expert\data\2018-09-13\2018-09-13_002.xad

Created: 9/13/2018 2:33:49 PM
 Modified: 9/13/2018 3:14:17 PM

Electropherogram Summary Continued ...

sample 19d



Overall Results for sample 1 : sample 19d

Number of peaks found: 0 Noise: 0.5

Peak table for sample 1 : sample 19d

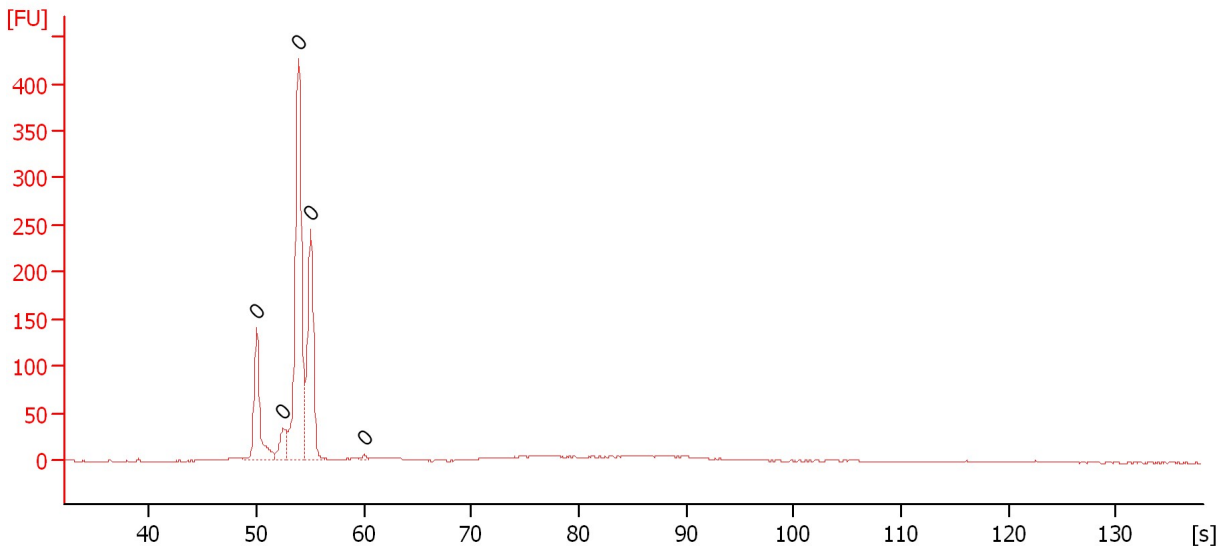
Peak	Size [bp]	Conc. [pg/μl]	Molarity [pmol/l]	Observations	Aligned Migration Time [s]
1	0	0.00	0.0		49.65
2	0	0.00	0.0		51.35
3	0	0.00	0.0		53.20
4	0	0.00	0.0		54.50

Assay Class: High Sensitivity DNA Assay
Data Path: C:\... bioanalyzer\2100 expert\data\2018-09-13\2018-09-13_002.xad

Created: 9/13/2018 2:33:49 PM
Modified: 9/13/2018 3:14:17 PM

Electropherogram Summary Continued ...

sample 20d



Overall Results for sample 2 : sample 20d

Number of peaks found: 0 Noise: 0.6

Peak table for sample 2 : sample 20d

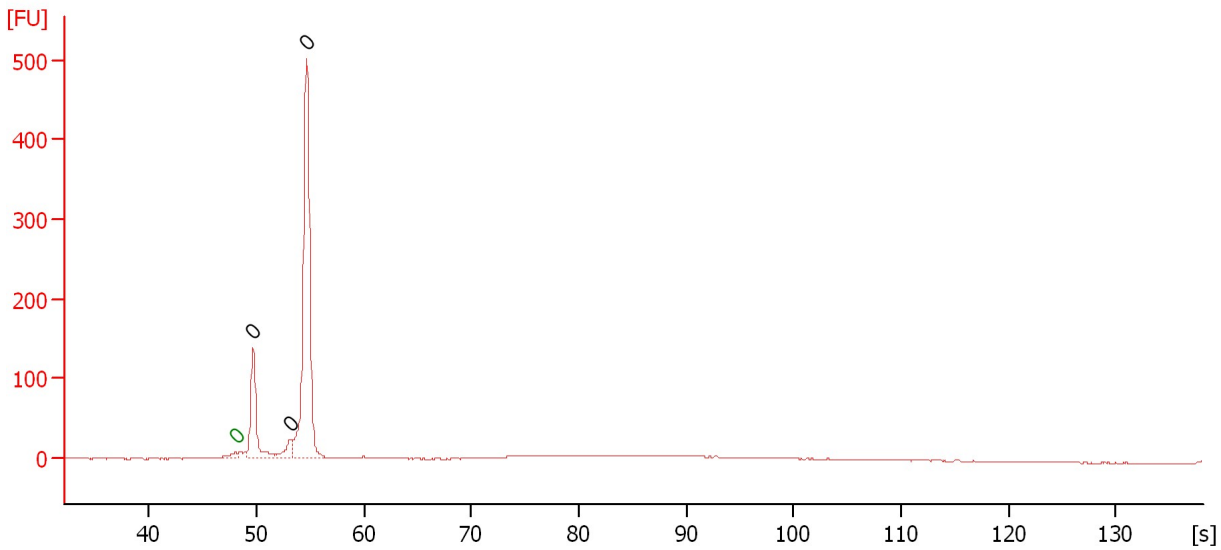
Peak	Size [bp]	Conc. [pg/ μ l]	Molarity [pmol/l]	Observations	Aligned Migration Time [s]
1	0	0.00	0.0		50.00
2	0	0.00	0.0		52.50
3	0	0.00	0.0		53.90
4	0	0.00	0.0		55.05
5	0	0.00	0.0		60.00

Assay Class: High Sensitivity DNA Assay
Data Path: C:\... bioanalyzer\2100 expert\data\2018-09-13\2018-09-13_002.xad

Created: 9/13/2018 2:33:49 PM
Modified: 9/13/2018 3:14:17 PM

Electropherogram Summary Continued ...

sample 22d



Overall Results for sample 3 : sample 22d

Number of peaks found: 3 Noise: 0.3

Peak table for sample 3 : sample 22d

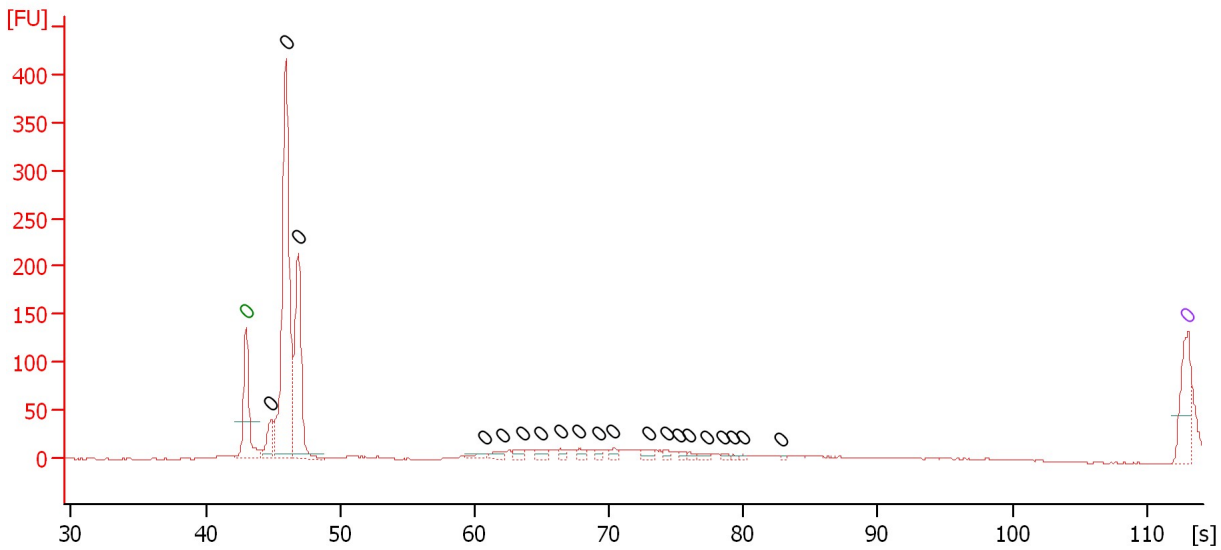
Peak	Size [bp]	Conc. [pg/μl]	Molarity [pmol/l]	Observations	Aligned Migration Time [s]
1	0	0.00	0.0	Lower Marker	48.05
2	0	0.00	0.0		49.70
3	0	0.00	0.0		53.20
4	0	0.00	0.0		54.65

Assay Class: High Sensitivity DNA Assay
 Data Path: C:\... bioanalyzer\2100 expert\data\2018-09-13\2018-09-13_002.xad

Created: 9/13/2018 2:33:49 PM
 Modified: 9/13/2018 3:14:17 PM

Electropherogram Summary Continued ...

sample 23d



Overall Results for sample 4 : sample 23d

Number of peaks found: 20 Noise: 0.4

Peak table for sample 4 : sample 23d

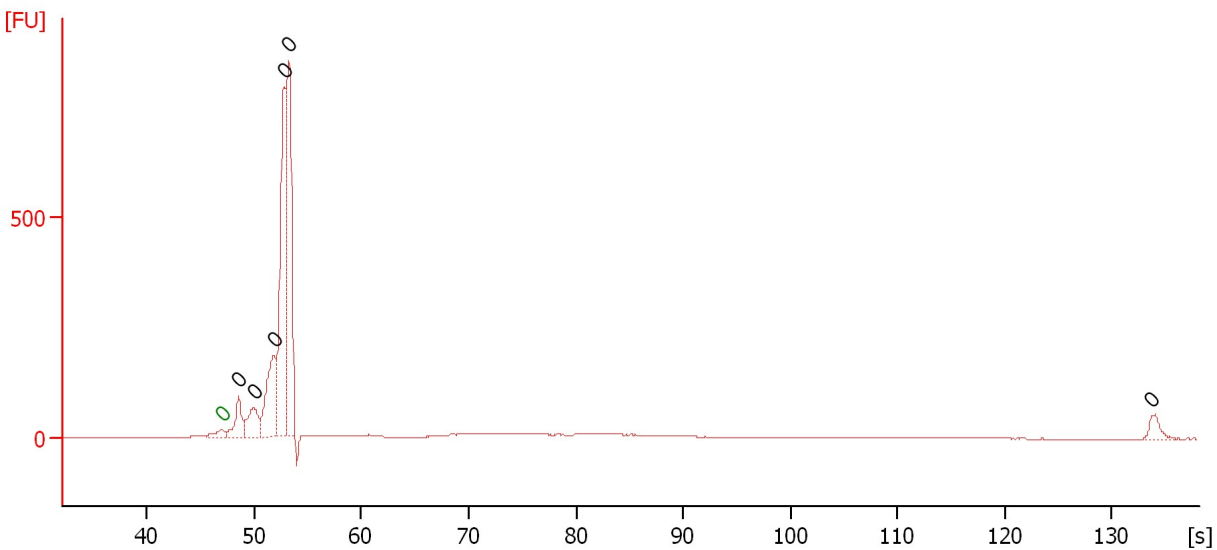
Peak	Size [bp]	Conc. [pg/μl]	Molarity [pmol/l]	Observations	Aligned Migration Time [s]
1	0	0.00	0.0	Lower Marker	43.00
2	0	0.00	0.0		44.84
3	0	0.00	0.0		45.99
4	0	0.00	0.0		46.91
5	0	0.00	0.0		60.77
6	0	0.00	0.0		62.05
7	0	0.00	0.0		63.64
8	0	0.00	0.0		64.92
9	0	0.00	0.0		66.36
10	0	0.00	0.0		67.76
11	0	0.00	0.0		69.24
12	0	0.00	0.0		70.35
13	0	0.00	0.0		72.91
14	0	0.00	0.0		74.31
15	0	0.00	0.0		75.22
16	0	0.00	0.0		75.98
17	0	0.00	0.0		77.26
18	0	0.00	0.0		78.42
19	0	0.00	0.0		79.26
20	0	0.00	0.0		79.94
21	0	0.00	0.0		82.85
22	0	0.00	0.0	Upper Marker	113.00

Assay Class: High Sensitivity DNA Assay
 Data Path: C:\... bioanalyzer\2100 expert\data\2018-09-13\2018-09-13_002.xad

Created: 9/13/2018 2:33:49 PM
 Modified: 9/13/2018 3:14:17 PM

Electropherogram Summary Continued ...

sample 19



Overall Results for sample 5 : sample 19

Number of peaks found: 6 Noise: 0.4

Peak table for sample 5 : sample 19

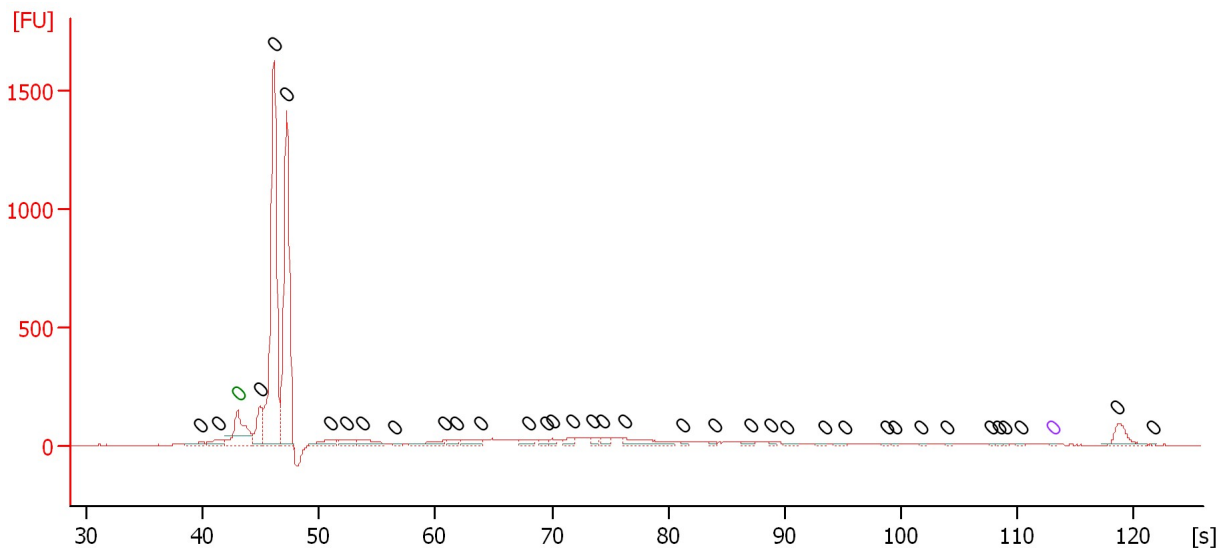
Peak	Size [bp]	Conc. [pg/μl]	Molarity [pmol/l]	Observations	Aligned Migration Time [s]
1	0	0.00	0.0	Lower Marker	46.95
2	0	0.00	0.0		48.55
3	0	0.00	0.0		49.95
4	0	0.00	0.0		51.80
5	0	0.00	0.0		52.80
6	0	0.00	0.0		53.20
7	0	0.00	0.0		133.70

Assay Class: High Sensitivity DNA Assay
 Data Path: C:\... bioanalyzer\2100 expert\data\2018-09-13\2018-09-13_002.xad

Created: 9/13/2018 2:33:49 PM
 Modified: 9/13/2018 3:14:17 PM

Electropherogram Summary Continued ...

sample 20



Overall Results for sample 6 : sample 20

Number of peaks found: 36 Noise: 0.6

Peak table for sample 6 : sample 20

Peak	Size [bp]	Conc. [pg/μl]	Molarity [pmol/l]	Observations	Aligned Migration Time [s]
1	0	0.00	0.0		39.83
2	0	0.00	0.0		41.39
3	0	0.00	0.0	Lower Marker	43.00
4	0	0.00	0.0		44.93
5	0	0.00	0.0		46.12
6	0	0.00	0.0		47.22
7	0	0.00	0.0		50.99
8	0	0.00	0.0		52.41
9	0	0.00	0.0		53.79
10	0	0.00	0.0		56.50
11	0	0.00	0.0		60.76
12	0	0.00	0.0		61.87
13	0	0.00	0.0		63.84
14	0	0.00	0.0		68.02
15	0	0.00	0.0		69.49
16	0	0.00	0.0		70.08
17	0	0.00	0.0		71.73
18	0	0.00	0.0		73.57
19	0	0.00	0.0		74.35
20	0	0.00	0.0		76.28
21	0	0.00	0.0		81.24
22	0	0.00	0.0		83.99
23	0	0.00	0.0		87.11
24	0	0.00	0.0		88.81
25	0	0.00	0.0		90.23
26	0	0.00	0.0		93.40
27	0	0.00	0.0		95.14

Assay Class: High Sensitivity DNA Assay
Data Path: C:\... bioanalyzer\2100 expert\data\2018-09-13\2018-09-13_002.xad

Created: 9/13/2018 2:33:49 PM
Modified: 9/13/2018 3:14:17 PM

Electropherogram Summary Continued ...**... Peak table for sample 6 : sample 20**

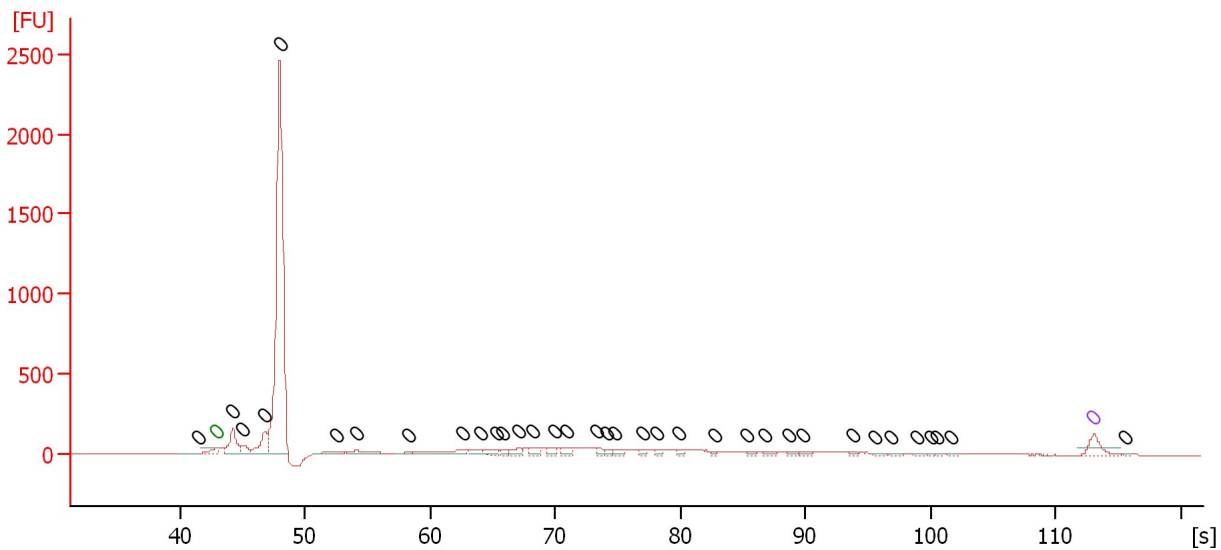
Peak	Size [bp]	Conc. [pg/ μ l]	Molarity [pmol/l]	Observations	Aligned Migration Time [s]
28	0	0.00	0.0		98.72
29	0	0.00	0.0		99.46
30	0	0.00	0.0		101.75
31	0	0.00	0.0		104.05
32	0	0.00	0.0		107.72
33	0	0.00	0.0		108.41
34	0	0.00	0.0		109.01
35	0	0.00	0.0		110.34
36	0	0.00	0.0	Upper Marker	113.00
37	0	0.00	0.0		118.65
38	0	0.00	0.0		121.77

Assay Class: High Sensitivity DNA Assay
 Data Path: C:\... bioanalyzer\2100 expert\data\2018-09-13\2018-09-13_002.xad

Created: 9/13/2018 2:33:49 PM
 Modified: 9/13/2018 3:14:17 PM

Electropherogram Summary Continued ...

sample 21



Overall Results for sample 7 : sample 21

Number of peaks found: 35 Noise: 0.6

Peak table for sample 7 : sample 21

Peak	Size [bp]	Conc. [pg/μl]	Molarity [pmol/l]	Observations	Aligned Migration Time [s]
1	0	0.00	0.0		41.55
2	0	0.00	0.0	Lower Marker	43.00
3	0	0.00	0.0		44.24
4	0	0.00	0.0		45.09
5	0	0.00	0.0		46.80
6	0	0.00	0.0		47.99
7	0	0.00	0.0		52.56
8	0	0.00	0.0		54.18
9	0	0.00	0.0		58.24
10	0	0.00	0.0		62.63
11	0	0.00	0.0		64.00
12	0	0.00	0.0		65.28
13	0	0.00	0.0		65.88
14	0	0.00	0.0		67.16
15	0	0.00	0.0		68.18
16	0	0.00	0.0		69.89
17	0	0.00	0.0		70.91
18	0	0.00	0.0		73.39
19	0	0.00	0.0		74.12
20	0	0.00	0.0		74.84
21	0	0.00	0.0		76.93
22	0	0.00	0.0		78.09
23	0	0.00	0.0		79.92
24	0	0.00	0.0		82.78
25	0	0.00	0.0		85.38
26	0	0.00	0.0		86.84
27	0	0.00	0.0		88.76

Assay Class: High Sensitivity DNA Assay
Data Path: C:\... bioanalyzer\2100 expert\data\2018-09-13\2018-09-13_002.xad

Created: 9/13/2018 2:33:49 PM
Modified: 9/13/2018 3:14:17 PM

Electropherogram Summary Continued ...**... Peak table for sample 7 : sample 21**

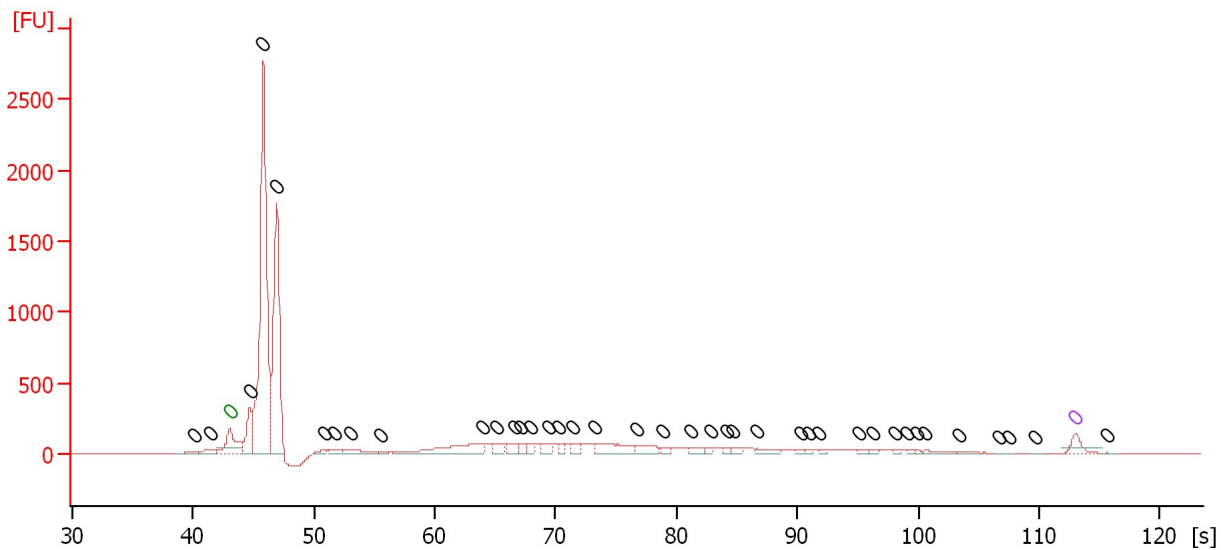
Peak	Size [bp]	Conc. [pg/ μ l]	Molarity [pmol/l]	Observations	Aligned Migration Time [s]
28	0	0.00	0.0		89.87
29	0	0.00	0.0		93.75
30	0	0.00	0.0		95.63
31	0	0.00	0.0		96.82
32	0	0.00	0.0		98.87
33	0	0.00	0.0		99.98
34	0	0.00	0.0		100.58
35	0	0.00	0.0		101.56
36	0	0.00	0.0	Upper Marker	113.00
37	0	0.00	0.0		115.52

Assay Class: High Sensitivity DNA Assay
 Data Path: C:\... bioanalyzer\2100 expert\data\2018-09-13\2018-09-13_002.xad

Created: 9/13/2018 2:33:49 PM
 Modified: 9/13/2018 3:14:17 PM

Electropherogram Summary Continued ...

sample 22



Overall Results for sample 8 : sample 22

Number of peaks found: 39 Noise: 0.5

Peak table for sample 8 : sample 22

Peak	Size [bp]	Conc. [pg/μl]	Molarity [pmol/l]	Observations	Aligned Migration Time [s]
1	0	0.00	0.0		40.08
2	0	0.00	0.0		41.45
3	0	0.00	0.0	Lower Marker	43.00
4	0	0.00	0.0		44.68
5	0	0.00	0.0		45.79
6	0	0.00	0.0		46.89
7	0	0.00	0.0		50.87
8	0	0.00	0.0		51.67
9	0	0.00	0.0		53.08
10	0	0.00	0.0		55.56
11	0	0.00	0.0		63.96
12	0	0.00	0.0		65.11
13	0	0.00	0.0		66.66
14	0	0.00	0.0		67.10
15	0	0.00	0.0		67.90
16	0	0.00	0.0		69.40
17	0	0.00	0.0		70.28
18	0	0.00	0.0		71.39
19	0	0.00	0.0		73.29
20	0	0.00	0.0		76.65
21	0	0.00	0.0		78.82
22	0	0.00	0.0		81.25
23	0	0.00	0.0		82.84
24	0	0.00	0.0		84.17
25	0	0.00	0.0		84.61
26	0	0.00	0.0		86.64
27	0	0.00	0.0		90.36

Assay Class: High Sensitivity DNA Assay
Data Path: C:\... bioanalyzer\2100 expert\data\2018-09-13\2018-09-13_002.xad

Created: 9/13/2018 2:33:49 PM
Modified: 9/13/2018 3:14:17 PM

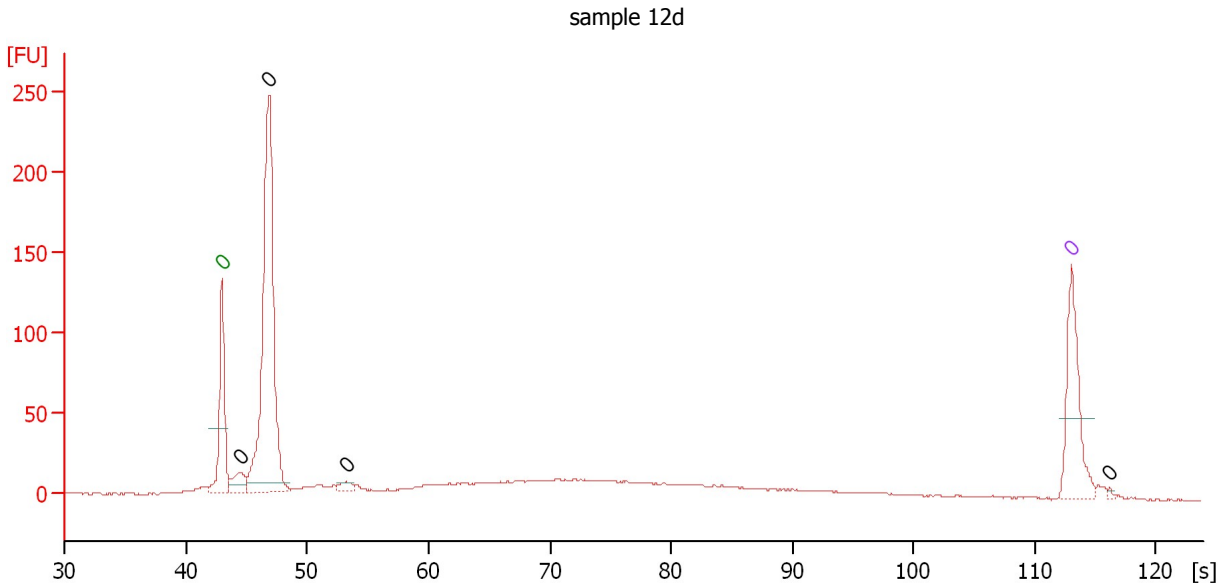
Electropherogram Summary Continued ...**... Peak table for sample 8 : sample 22**

Peak	Size [bp]	Conc. [pg/ μ l]	Molarity [pmol/l]	Observations	Aligned Migration Time [s]
28	0	0.00	0.0		90.89
29	0	0.00	0.0		91.86
30	0	0.00	0.0		95.14
31	0	0.00	0.0		96.33
32	0	0.00	0.0		98.05
33	0	0.00	0.0		99.11
34	0	0.00	0.0		99.96
35	0	0.00	0.0		100.57
36	0	0.00	0.0		103.40
37	0	0.00	0.0		106.68
38	0	0.00	0.0		107.56
39	0	0.00	0.0		109.73
40	0	0.00	0.0	Upper Marker	113.00
41	0	0.00	0.0		115.61

Assay Class: High Sensitivity DNA Assay
 Data Path: C:\... bioanalyzer\2100 expert\data\2018-09-13\2018-09-13_002.xad

Created: 9/13/2018 2:33:49 PM
 Modified: 9/13/2018 3:14:17 PM

Electropherogram Summary Continued ...



Overall Results for sample 9 : sample 12d

Number of peaks found: 4 Noise: 0.5

Peak table for sample 9 : sample 12d

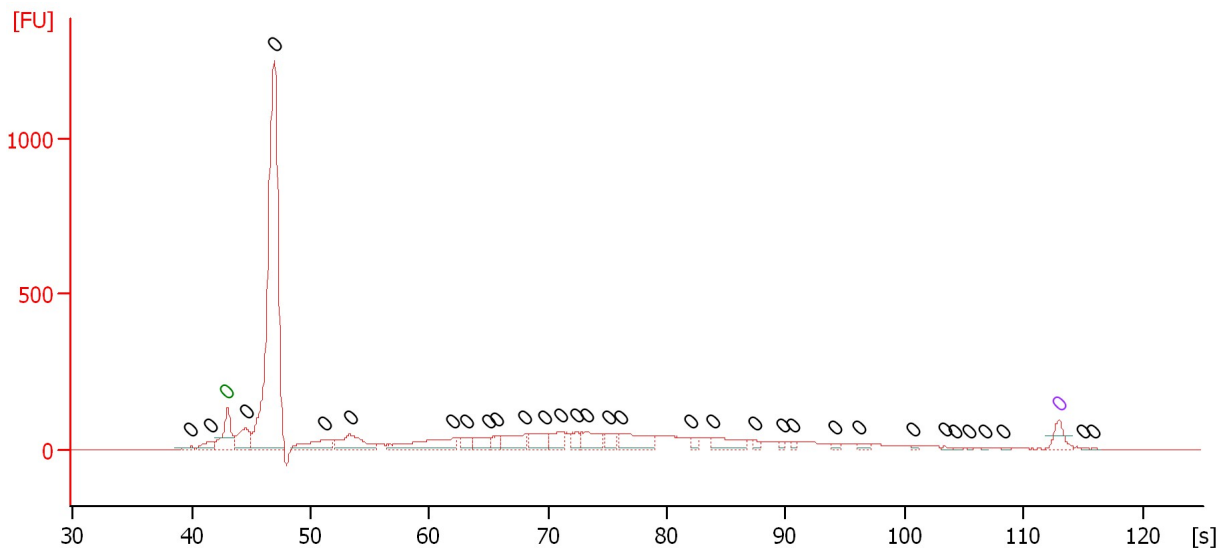
Peak	Size [bp]	Conc. [pg/μl]	Molarity [pmol/l]	Observations	Aligned Migration Time [s]
1	0	0.00	0.0	Lower Marker	43.00
2	0	0.00	0.0		44.46
3	0	0.00	0.0		46.85
4	0	0.00	0.0		53.18
5	0	0.00	0.0	Upper Marker	113.00
6	0	0.00	0.0		116.14

Assay Class: High Sensitivity DNA Assay
 Data Path: C:\... bioanalyzer\2100 expert\data\2018-09-13\2018-09-13_002.xad

Created: 9/13/2018 2:33:49 PM
 Modified: 9/13/2018 3:14:17 PM

Electropherogram Summary Continued ...

sample 12



Overall Results for sample 10 : sample 12

Number of peaks found: 32 Noise: 0.5

Peak table for sample 10 : sample 12

Peak	Size [bp]	Conc. [pg/μl]	Molarity [pmol/l]	Observations	Aligned Migration Time [s]
1	0	0.00	0.0		39.94
2	0	0.00	0.0		41.56
3	0	0.00	0.0	Lower Marker	43.00
4	0	0.00	0.0		44.53
5	0	0.00	0.0		46.96
6	0	0.00	0.0		51.14
7	0	0.00	0.0		53.30
8	0	0.00	0.0		62.02
9	0	0.00	0.0		63.19
10	0	0.00	0.0		64.98
11	0	0.00	0.0		65.70
12	0	0.00	0.0		68.04
13	0	0.00	0.0		69.66
14	0	0.00	0.0		71.01
15	0	0.00	0.0		72.36
16	0	0.00	0.0		73.17
17	0	0.00	0.0		75.06
18	0	0.00	0.0		76.13
19	0	0.00	0.0		81.98
20	0	0.00	0.0		83.82
21	0	0.00	0.0		87.37
22	0	0.00	0.0		89.71
23	0	0.00	0.0		90.52
24	0	0.00	0.0		94.07
25	0	0.00	0.0		96.10
26	0	0.00	0.0		100.73
27	0	0.00	0.0		103.33

Assay Class: High Sensitivity DNA Assay
Data Path: C:\... bioanalyzer\2100 expert\data\2018-09-13\2018-09-13_002.xad

Created: 9/13/2018 2:33:49 PM
Modified: 9/13/2018 3:14:17 PM

Electropherogram Summary Continued ...

... Peak table for sample 10 :

sample 12

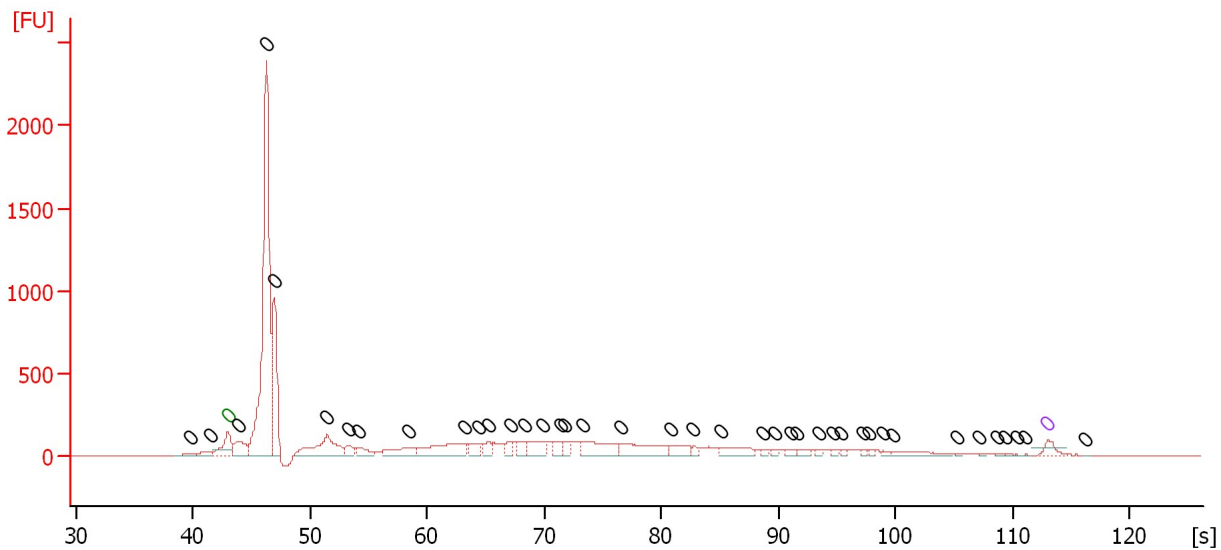
Peak	Size [bp]	Conc. [pg/ μ l]	Molarity [pmol/l]	Observations	Aligned Migration Time [s]
28	0	0.00	0.0		104.23
29	0	0.00	0.0		105.49
30	0	0.00	0.0		106.80
31	0	0.00	0.0		108.28
32	0	0.00	0.0	Upper Marker	113.00
33	0	0.00	0.0		115.02
34	0	0.00	0.0		115.88

Assay Class: High Sensitivity DNA Assay
 Data Path: C:\... bioanalyzer\2100 expert\data\2018-09-13\2018-09-13_002.xad

Created: 9/13/2018 2:33:49 PM
 Modified: 9/13/2018 3:14:17 PM

Electropherogram Summary Continued ...

sample 13



Overall Results for sample 11 : sample 13

Number of peaks found: 40 Noise: 0.4

Peak table for sample 11 : sample 13

Peak	Size [bp]	Conc. [pg/μl]	Molarity [pmol/l]	Observations	Aligned Migration Time [s]
1	0	0.00	0.0		39.85
2	0	0.00	0.0		41.50
3	0	0.00	0.0	Lower Marker	43.00
4	0	0.00	0.0		43.91
5	0	0.00	0.0		46.28
6	0	0.00	0.0		46.97
7	0	0.00	0.0		51.48
8	0	0.00	0.0		53.31
9	0	0.00	0.0		54.13
10	0	0.00	0.0		58.37
11	0	0.00	0.0		63.25
12	0	0.00	0.0		64.43
13	0	0.00	0.0		65.30
14	0	0.00	0.0		67.08
15	0	0.00	0.0		68.26
16	0	0.00	0.0		69.91
17	0	0.00	0.0		71.36
18	0	0.00	0.0		71.68
19	0	0.00	0.0		73.28
20	0	0.00	0.0		76.52
21	0	0.00	0.0		80.85
22	0	0.00	0.0		82.77
23	0	0.00	0.0		85.09
24	0	0.00	0.0		88.65
25	0	0.00	0.0		89.70
26	0	0.00	0.0		91.11
27	0	0.00	0.0		91.61

Assay Class: High Sensitivity DNA Assay
Data Path: C:\... bioanalyzer\2100 expert\data\2018-09-13\2018-09-13_002.xad

Created: 9/13/2018 2:33:49 PM
Modified: 9/13/2018 3:14:17 PM

Electropherogram Summary Continued ...**... Peak table for sample 11 : sample 13**

Peak	Size [bp]	Conc. [pg/μl]	Molarity [pmol/l]	Observations	Aligned Migration Time [s]
28	0	0.00	0.0		93.44
29	0	0.00	0.0		94.67
30	0	0.00	0.0		95.35
31	0	0.00	0.0		97.27
32	0	0.00	0.0		97.77
33	0	0.00	0.0		98.95
34	0	0.00	0.0		99.73
35	0	0.00	0.0		105.25
36	0	0.00	0.0		107.16
37	0	0.00	0.0		108.62
38	0	0.00	0.0		109.40
39	0	0.00	0.0		110.31
40	0	0.00	0.0		111.13
41	0	0.00	0.0	Upper Marker	113.00
42	0	0.00	0.0		116.19

Assay Class: High Sensitivity DNA Assay
Data Path: C:\... bioanalyzer\2100 expert\data\2018-09-13\2018-09-13_002.xad

Created: 9/13/2018 2:33:49 PM
Modified: 9/13/2018 3:14:17 PM

Gel Image

