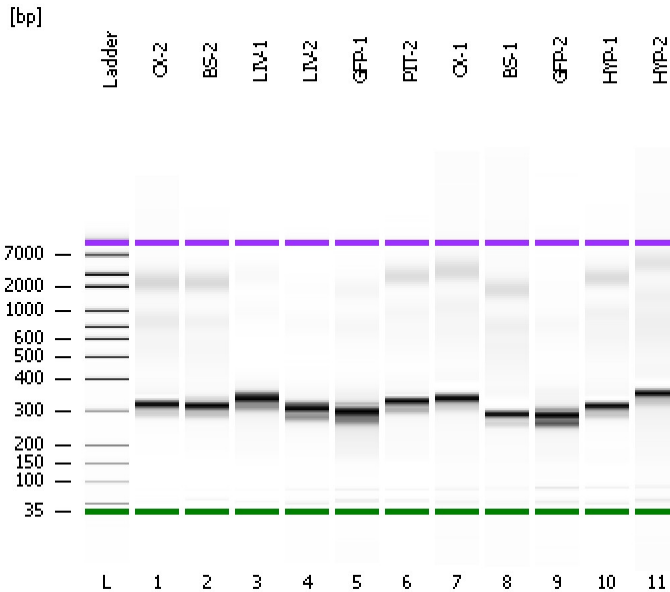


Assay Class: High Sensitivity DNA Assay
Data Path: C:\...xpert\data\XAD Files_OLD\2011-08-01\2011-08-01_10-43-13.xad

Created: 8/1/2011 10:43:13 AM
Modified: 8/1/2011 12:41:03 PM

Electrophoresis File Run Summary



Instrument Information:

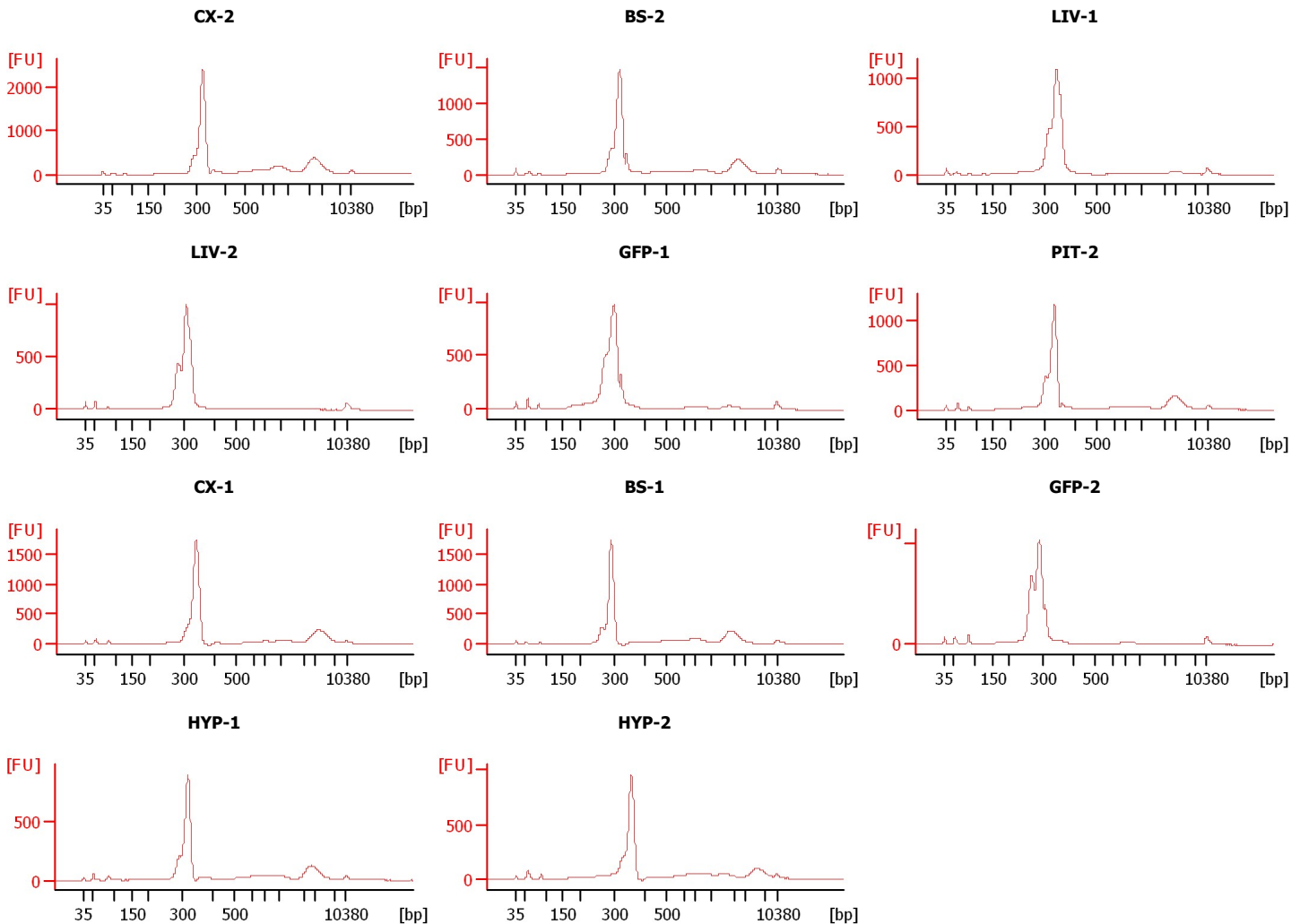
Instrument Name: DE13701086 Firmware: C.01.069
Serial#: DE13701086 Type: G2938B

Assay Information:

Assay Origin Path: C:\Program Files\Agilent\2100 bioanalyzer\2100 expert\assays\dsDNA\High Sensitivity DNA.xsy
Assay Class: High Sensitivity DNA Assay
Version: 1.0
Assay Comments: Copyright © 2003-2009 Agilent Technologies

Chip Information:

Chip Lot #:
Reagent Kit Lot #:
Chip Comments:



Assay Class: High Sensitivity DNA Assay
Data Path: C:\...xpert\data\XAD Files_OLD\2011-08-01\2011-08-01_10-43-13.xad

Created: 8/1/2011 10:43:13 AM
Modified: 8/1/2011 12:41:03 PM

Electrophoresis File Run Summary (Chip Summary)

Sample Name	Sample Comment	Rest. Digest	Status	Observation	Result Label	Result Color
CX-2		<input type="checkbox"/>	✓			
BS-2		<input type="checkbox"/>	✓			
LIV-1		<input type="checkbox"/>	✓			
LIV-2		<input type="checkbox"/>	✓			
GFP-1		<input type="checkbox"/>	✓			
PIT-2		<input type="checkbox"/>	✓			
CX-1		<input type="checkbox"/>	✓			
BS-1		<input type="checkbox"/>	✓			
GFP-2		<input type="checkbox"/>	✓			
HYP-1		<input type="checkbox"/>	✓			
HYP-2		<input type="checkbox"/>	✓			
Ladder		<input type="checkbox"/>	✓			

Chip Lot #

Reagent Kit Lot #

Chip Comments :

Assay Class: High Sensitivity DNA Assay
Data Path: C:\...xpert\data\XAD Files_OLD\2011-08-01\2011-08-01_10-43-13.xad

Created: 8/1/2011 10:43:13 AM
Modified: 8/1/2011 12:41:03 PM

Electrophoresis Assay Details

General Analysis Settings

Number of Available Sample and Ladder Wells (Max.) : 12
Minimum Visible Range [s] : 32
Maximum Visible Range [s] : 138
Start Analysis Time Range [s] : 33
End Analysis Time Range [s] : 137.5
Ladder Concentration [pg/μl] : 1950
Uses Standard Area for Ladder Fragments
Lower Marker Concentration [pg/μl] : 125
Upper Marker Concentration [pg/μl] : 75
Used Upper Marker for Quantitation
Standard Curve Fit is Point to Point
Show Data Aligned to Lower and Upper Marker

Integrator Settings

Integration Start Time [s] : 33.05
Integration End Time [s] : 137
Slope Threshold : 0.8
Height Threshold [FU] : 5
Area Threshold : 0.1
Width Threshold [s] : 0.6
Baseline Plateau [s] : 0.5

Filter Settings

Filter Width [s] : 0.5
Polynomial Order : 4

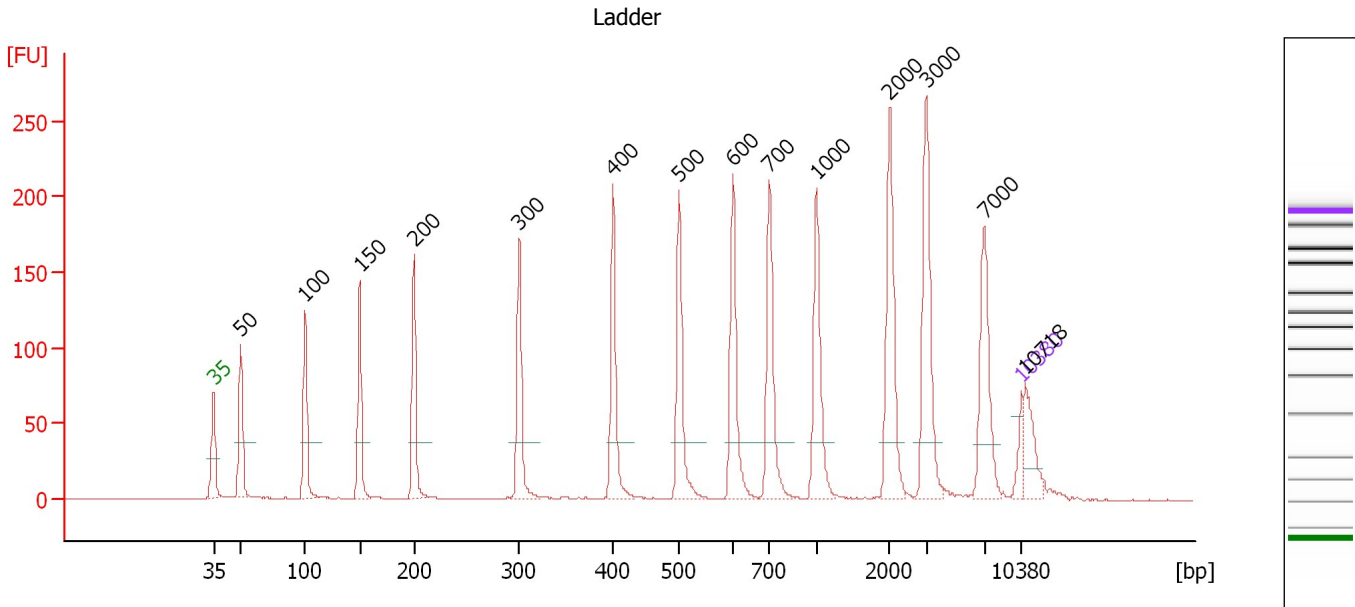
Ladder

Ladder Peak	Size	Area
1	35	160
2	50	210
3	100	208
4	150	221
5	200	242
6	300	270
7	400	305
8	500	306
9	600	336
10	700	321
11	1000	366
12	2000	413
13	3000	411
14	7000	400
15	10380	214

Assay Class: High Sensitivity DNA Assay
 Data Path: C:\...xpert\data\XAD Files_OLD\2011-08-01\2011-08-01_10-43-13.xad

Created: 8/1/2011 10:43:13 AM
 Modified: 8/1/2011 12:41:03 PM

Electropherogram Summary



Overall Results for Ladder

Noise: 0.2

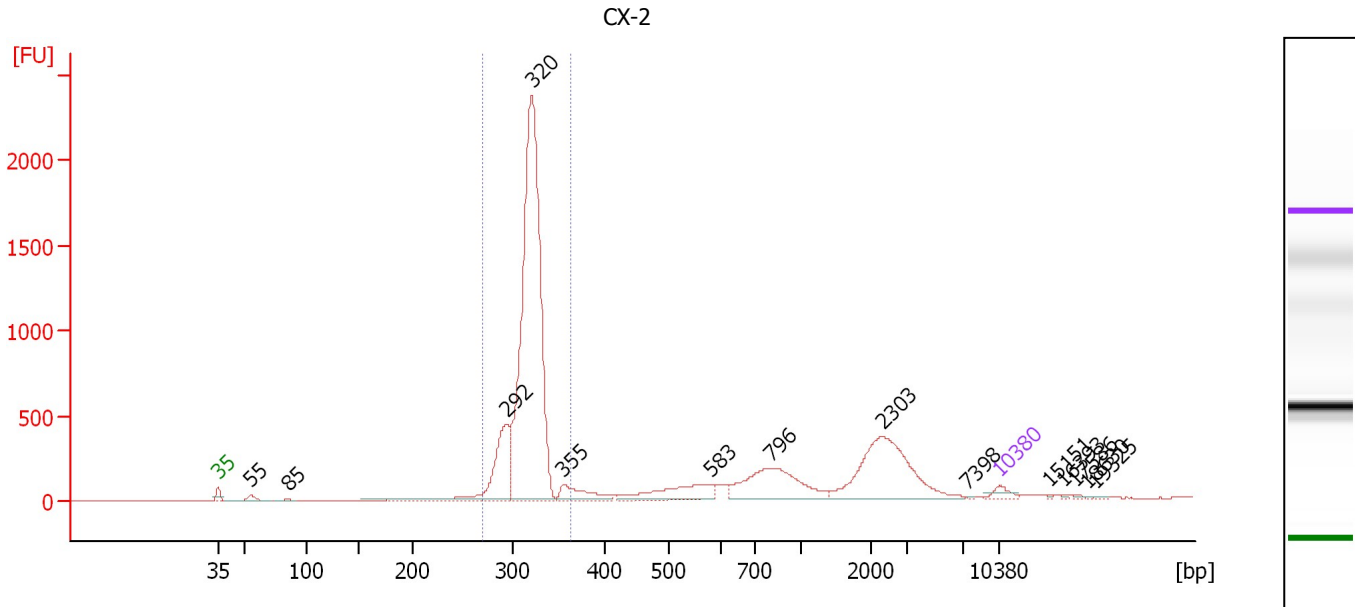
Peak table for Ladder

Peak	Size [bp]	Conc. [pg/μl]	Molarity [pmol/l]	Observations
1	35	125.00	5,411.3	Lower Marker
2	50	150.00	4,545.5	Ladder Peak
3	100	150.00	2,272.7	Ladder Peak
4	150	150.00	1,515.2	Ladder Peak
5	200	150.00	1,136.4	Ladder Peak
6	300	150.00	757.6	Ladder Peak
7	400	150.00	568.2	Ladder Peak
8	500	150.00	454.5	Ladder Peak
9	600	150.00	378.8	Ladder Peak
10	700	150.00	324.7	Ladder Peak
11	1,000	150.00	227.3	Ladder Peak
12	2,000	150.00	113.6	Ladder Peak
13	3,000	150.00	75.8	Ladder Peak
14	7,000	150.00	32.5	Ladder Peak
15	10,380	75.00	10.9	Upper Marker
16	10,718	0.00	0.0	

Assay Class: High Sensitivity DNA Assay
 Data Path: C:\...xpert\data\XAD Files_OLD\2011-08-01\2011-08-01_10-43-13.xad

Created: 8/1/2011 10:43:13 AM
 Modified: 8/1/2011 12:41:03 PM

Electropherogram Summary Continued ...



Overall Results for sample 1 : CX-2

Number of peaks found: 14 Corr. Area 1: 7,258.2
 Noise: 0.2

Peak table for sample 1 : CX-2

Peak	Size [bp]	Conc. [pg/μl]	Molarity [pmol/l]	Observations
1	35	125.00	5,411.3	Lower Marker
2	55	113.91	3,121.2	
3	85	28.18	504.5	
4	292	1,185.72	6,146.2	
5	320	6,486.84	30,710.7	
6	355	333.07	1,421.1	
7	583	501.19	1,301.8	
8	796	974.54	1,855.8	
9	2,303	1,289.75	848.7	
10	7,398	6.96	1.4	
11	10,380	75.00	10.9	Upper Marker
12	15,151	0.00	0.0	
13	16,393	0.00	0.0	
14	17,586	0.00	0.0	
15	18,630	0.00	0.0	
16	19,325	0.00	0.0	

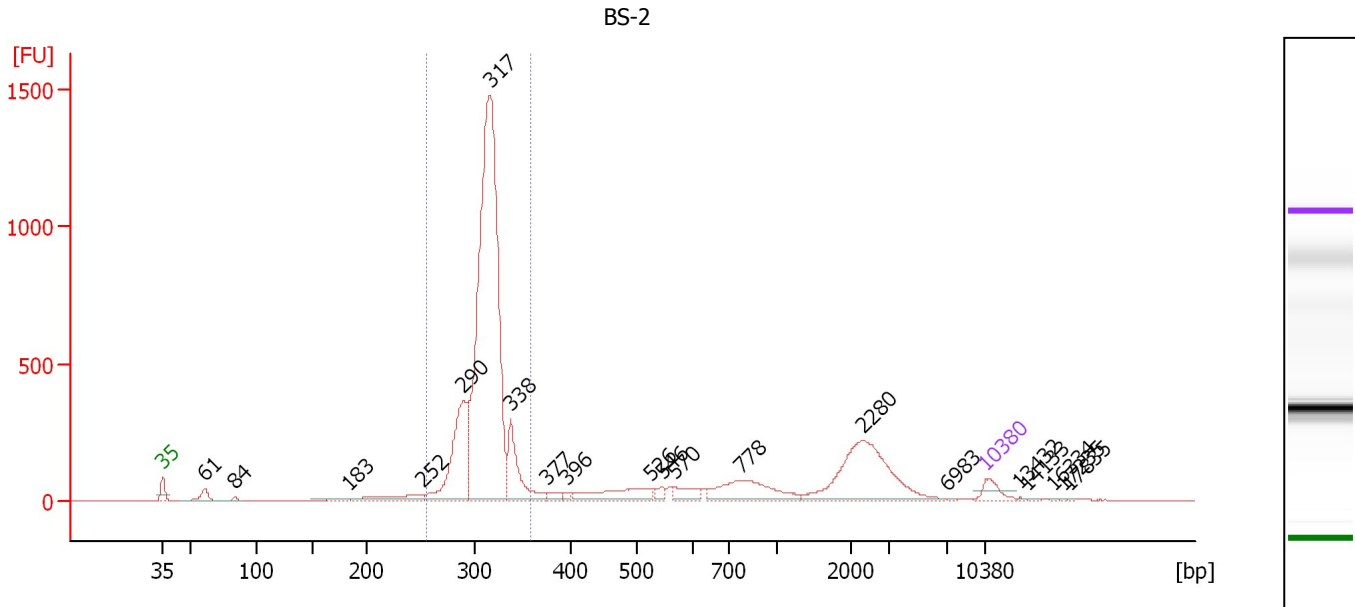
Region table for sample 1 : CX-2

From [bp]	Molarity [pmol/l]	Average Size [bp]	Conc. [pg/μl]	To [bp]	Corr. Area	% of Total	Size distribution in CV [%]	Color
269	36,565.8	316	7,599.64	364	7,258.2	64	4.6	Blue

Assay Class: High Sensitivity DNA Assay
 Data Path: C:\...xpert\data\XAD Files_OLD\2011-08-01\2011-08-01_10-43-13.xad

Created: 8/1/2011 10:43:13 AM
 Modified: 8/1/2011 12:41:03 PM

Electropherogram Summary Continued ...



Overall Results for sample 2 : BS-2

Number of peaks found: 20 Corr. Area 1: 5,141.5
 Noise: 0.5

Peak table for sample 2 : BS-2

Peak	Size [bp]	Conc. [pg/μl]	Molarity [pmol/l]	Observations
1	35	125.00	5,411.3	Lower Marker
2	61	111.34	2,783.3	
3	84	23.29	421.5	
4	183	36.38	301.5	
5	252	162.69	977.6	
6	290	849.33	4,437.0	
7	317	4,068.69	19,476.9	
8	338	428.81	1,923.9	
9	377	48.85	196.5	
10	396	19.81	75.8	
11	526	259.04	745.9	
12	546	45.86	127.3	
13	570	106.53	283.0	
14	778	369.04	718.3	
15	2,280	719.44	478.1	
16	6,983	3.28	0.7	
17	10,380	75.00	10.9	Upper Marker
18	13,432	0.00	0.0	
19	14,133	0.00	0.0	
20	16,334	0.00	0.0	
21	17,235	0.00	0.0	
22	17,835	0.00	0.0	

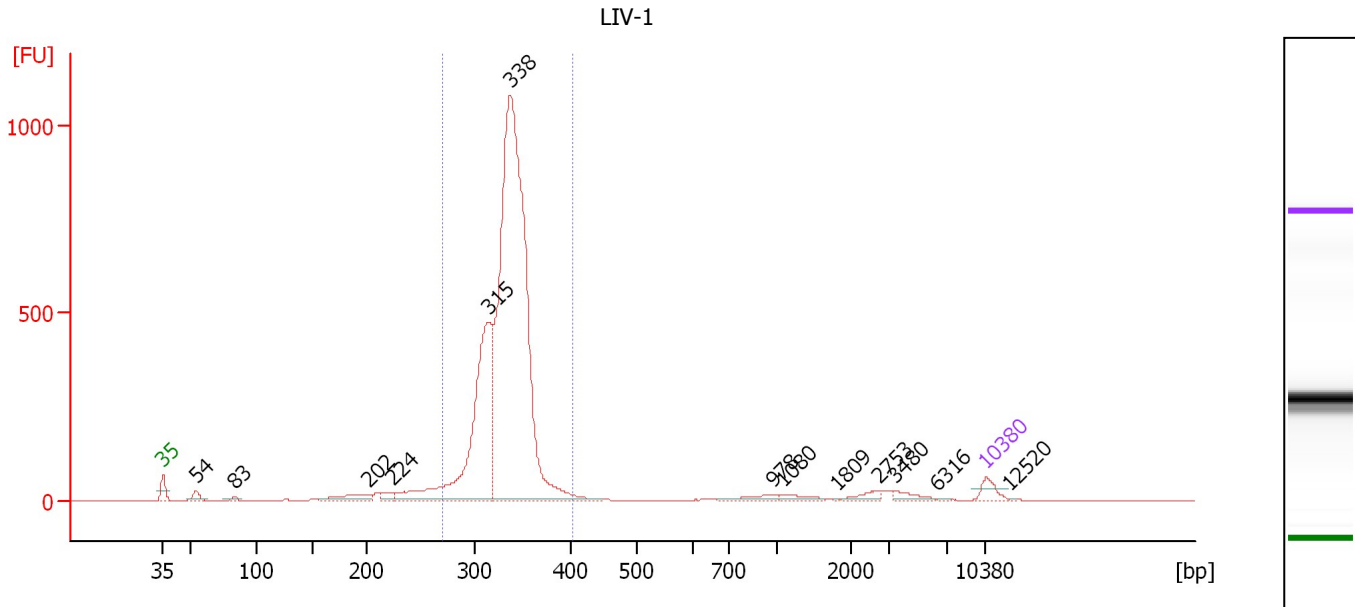
Region table for sample 2 : BS-2

From [bp]	Molarity [pmol/l]	Average Size [bp]	Conc. [pg/μl]	To [bp]	Corr. Area	% of Total	Size distribution in CV [%]	Color
255	25,908.5	312	5,313.36	360	5,141.5	68	5.2	Blue

Assay Class: High Sensitivity DNA Assay
 Data Path: C:\...xpert\data\XAD Files_OLD\2011-08-01\2011-08-01_10-43-13.xad

Created: 8/1/2011 10:43:13 AM
 Modified: 8/1/2011 12:41:03 PM

Electropherogram Summary Continued ...



Overall Results for sample 3 : LIV-1

Number of peaks found: 13 Corr. Area 1: 5,025.9
 Noise: 0.2

Peak table for sample 3 : LIV-1

Peak	Size [bp]	Conc. [pg/μl]	Molarity [pmol/l]	Observations
1	35	125.00	5,411.3	Lower Marker
2	54	76.14	2,134.2	
3	83	23.36	424.2	
4	202	140.63	1,056.6	
5	224	63.99	433.5	
6	315	2,062.10	9,911.3	
7	338	5,447.40	24,413.7	
8	978	50.91	78.9	
9	1,080	45.72	64.2	
10	1,809	3.35	2.8	
11	2,753	49.92	27.5	
12	3,480	51.52	22.4	
13	6,316	5.10	1.2	
14	10,380	75.00	10.9	Upper Marker
15	12,520	0.00	0.0	

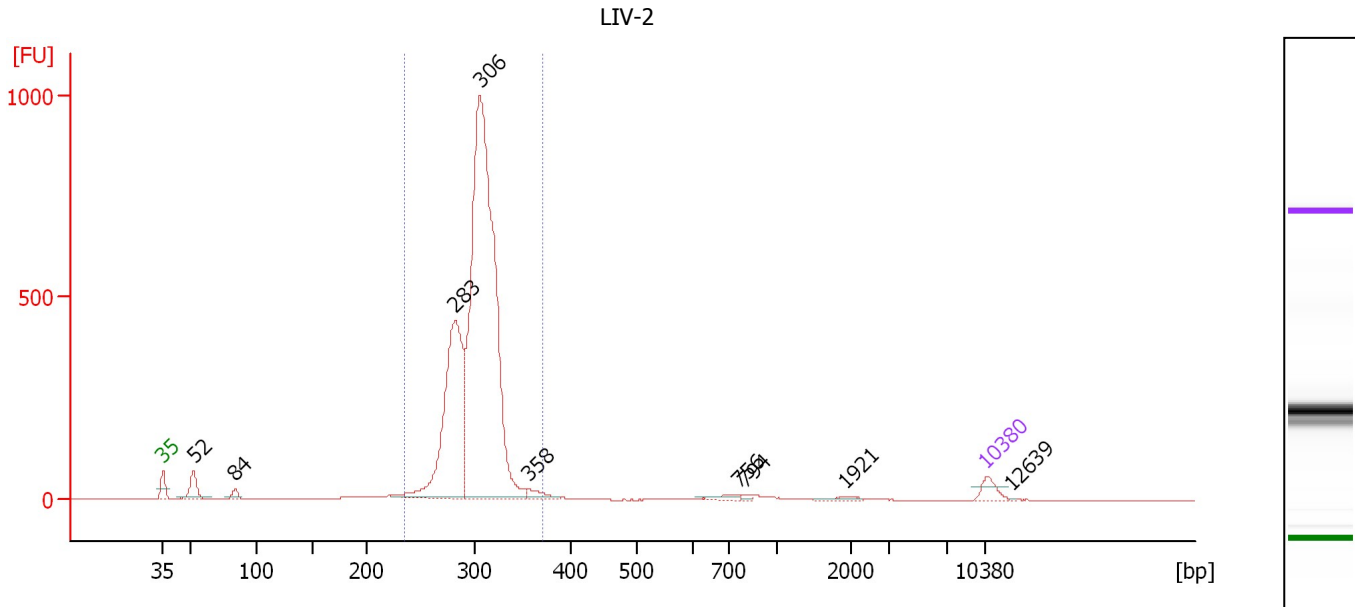
Region table for sample 3 : LIV-1

From [bp]	Molarity [pmol/l]	Average Size [bp]	Conc. [pg/μl]	To [bp]	Corr. Area	% of Total	Size distribution in CV [%]	Color
270	33,083.3	333	7,264.28	406	5,025.9	88	6.1	Blue

Assay Class: High Sensitivity DNA Assay
 Data Path: C:\...xpert\data\XAD Files_OLD\2011-08-01\2011-08-01_10-43-13.xad

Created: 8/1/2011 10:43:13 AM
 Modified: 8/1/2011 12:41:03 PM

Electropherogram Summary Continued ...



Overall Results for sample 4 : LIV-2

Number of peaks found: 9 Corr. Area 1: 4,545.8
 Noise: 0.2

Peak table for sample 4 : LIV-2

Peak	Size [bp]	Conc. [pg/μl]	Molarity [pmol/l]	Observations
1	35	125.00	5,411.3	Lower Marker
2	52	205.68	5,978.2	
3	84	54.67	987.0	
4	283	1,905.50	10,218.2	
5	306	4,946.92	24,504.9	
6	358	73.20	309.9	
7	756	45.57	91.4	
8	794	15.25	29.1	
9	1,921	19.85	15.7	
10	10,380	75.00	10.9	Upper Marker
11	12,639	0.00	0.0	

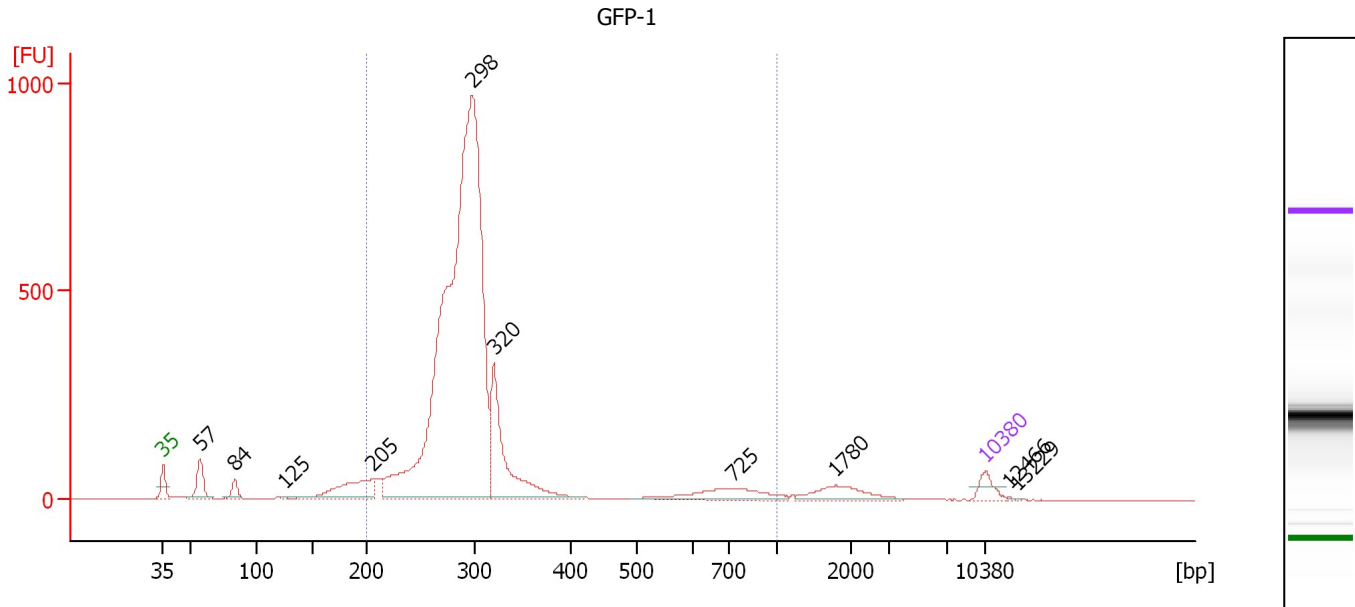
Region table for sample 4 : LIV-2

From [bp]	Molarity [pmol/l]	Average Size [bp]	Conc. [pg/μl]	To [bp]	Corr. Area	% of Total	Size distribution in CV [%]	Color
235	34,920.2	303	6,941.86	373	4,545.8	92	6.4	Blue

Assay Class: High Sensitivity DNA Assay
 Data Path: C:\...xpert\data\XAD Files_OLD\2011-08-01\2011-08-01_10-43-13.xad

Created: 8/1/2011 10:43:13 AM
 Modified: 8/1/2011 12:41:03 PM

Electropherogram Summary Continued ...



Overall Results for sample 5 : GFP-1

Number of peaks found: 10 Corr. Area 1: 5,852.3
 Noise: 0.2

Peak table for sample 5 : GFP-1

Peak	Size [bp]	Conc. [pg/μl]	Molarity [pmol/l]	Observations
1	35	125.00	5,411.3	Lower Marker
2	57	228.75	6,056.9	
3	84	91.71	1,658.6	
4	125	8.18	99.0	
5	205	400.93	2,965.1	
6	298	6,390.46	32,499.6	
7	320	839.44	3,969.3	
8	725	250.11	522.9	
9	1,780	158.34	134.8	
10	10,380	75.00	10.9	Upper Marker
11	12,466	0.00	0.0	
12	13,229	0.00	0.0	

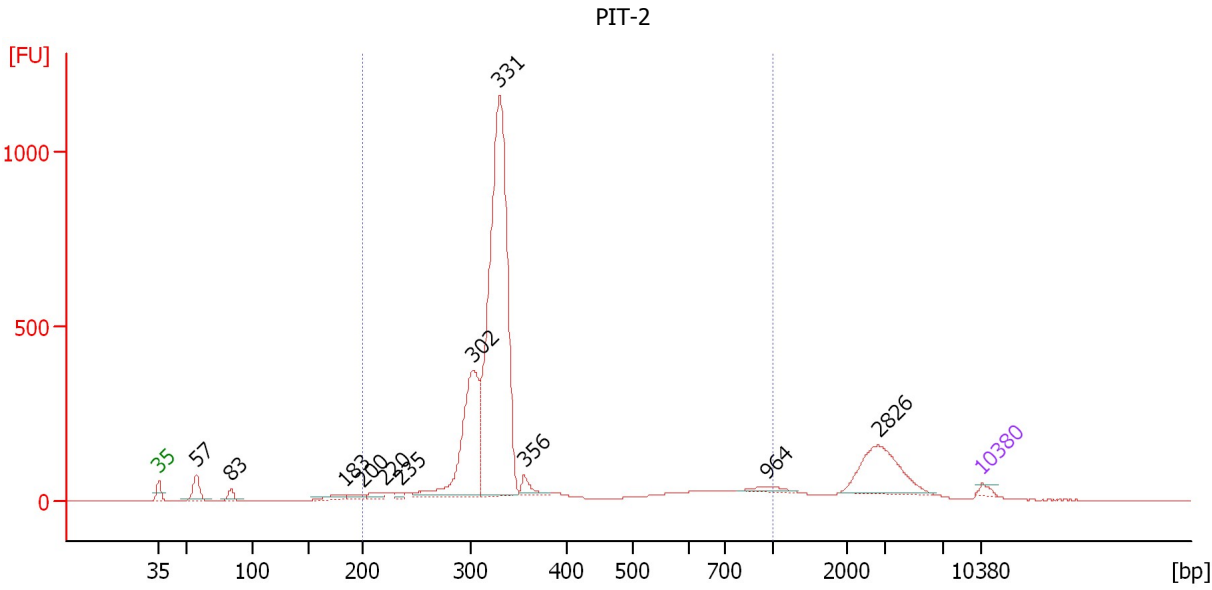
Region table for sample 5 : GFP-1

From [bp]	Molarity [pmol/l]	Average Size [bp]	Conc. [pg/μl]	To [bp]	Corr. Area	% of Total	Size distribution in CV [%]	Color
200	40,440.9	310	7,818.94	1,000	5,852.3	90	31.8	Blue

Assay Class: High Sensitivity DNA Assay
 Data Path: C:\...xpert\data\XAD Files_OLD\2011-08-01\2011-08-01_10-43-13.xad

Created: 8/1/2011 10:43:13 AM
 Modified: 8/1/2011 12:41:03 PM

Electropherogram Summary Continued ...



Overall Results for sample 6 : PIT-2

Number of peaks found: 11 Corr. Area 1: 4,513.2
 Noise: 0.2

Peak table for sample 6 : PIT-2

Peak	Size [bp]	Conc. [pg/μl]	Molarity [pmol/l]	Observations
1	35	125.00	5,411.3	Lower Marker
2	57	495.34	13,102.4	
3	83	197.24	3,582.3	
4	183	179.16	1,484.8	
5	200	156.56	1,188.2	
6	220	141.34	974.5	
7	235	77.91	502.3	
8	302	3,319.57	16,644.5	
9	331	9,762.09	44,711.3	
10	356	245.73	1,044.7	
11	964	129.16	202.9	
12	2,826	1,232.97	661.1	
13	10,380	75.00	10.9	Upper Marker

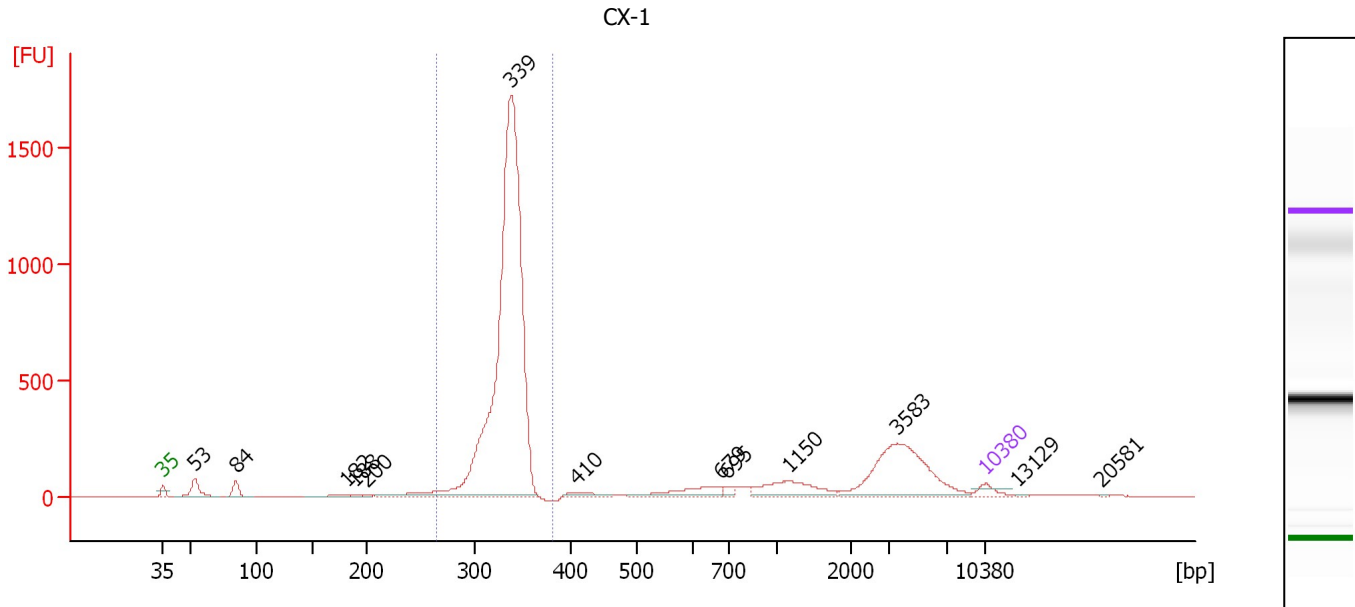
Region table for sample 6 : PIT-2

From [bp]	Molarity [pmol/l]	Average Size [bp]	Conc. [pg/μl]	To [bp]	Corr. Area	% of Total	Size distribution in CV [%]	Color
200	73,587.5	358	15,988.96	1,000	4,513.2	81	35.3	Blue

Assay Class: High Sensitivity DNA Assay
 Data Path: C:\...xpert\data\XAD Files_OLD\2011-08-01\2011-08-01_10-43-13.xad

Created: 8/1/2011 10:43:13 AM
 Modified: 8/1/2011 12:41:03 PM

Electropherogram Summary Continued ...



Overall Results for sample 7 : CX-1

Number of peaks found: 13 Corr. Area 1: 5,310.4
 Noise: 0.4

Peak table for sample 7 : CX-1

Peak	Size [bp]	Conc. [pg/μl]	Molarity [pmol/l]	Observations
1	35	125.00	5,411.3	Lower Marker
2	53	263.26	7,476.4	
3	84	146.89	2,646.0	
4	182	49.99	416.1	
5	188	21.04	169.7	
6	200	17.02	128.8	
7	339	7,209.36	32,231.4	
8	410	87.38	323.3	
9	679	256.52	572.2	
10	695	55.28	120.5	
11	1,150	367.53	484.2	
12	3,583	1,045.43	442.0	
13	10,380	75.00	10.9	Upper Marker
14	13,129	0.00	0.0	
15	20,581	0.00	0.0	

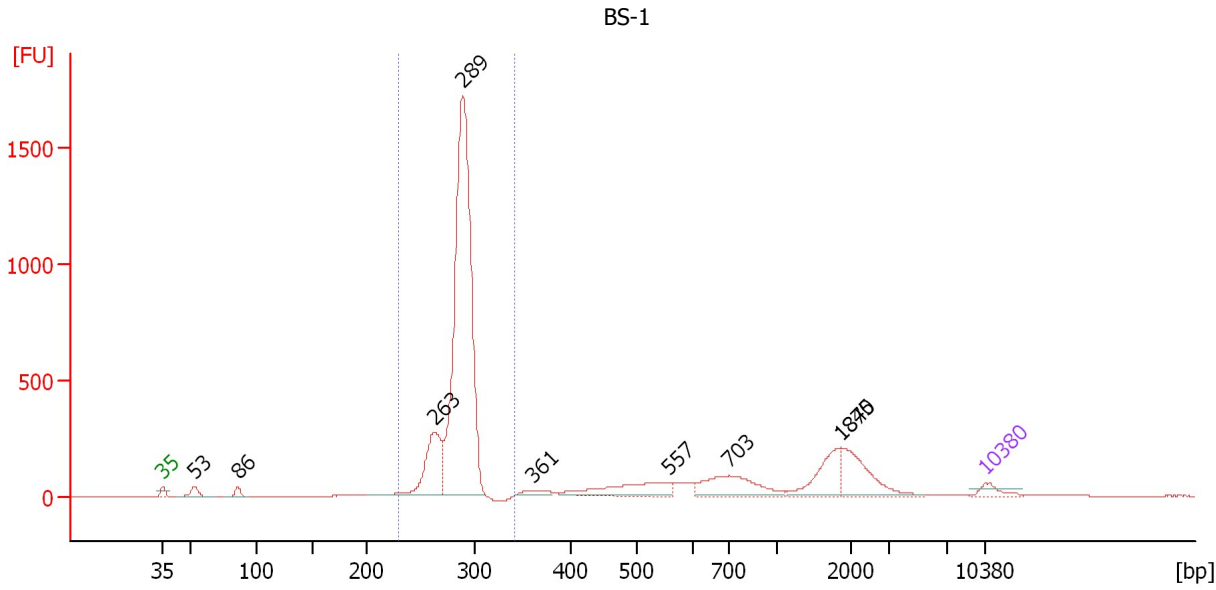
Region table for sample 7 : CX-1

From [bp]	Molarity [pmol/l]	Average Size [bp]	Conc. [pg/μl]	To [bp]	Corr. Area	% of Total	Size distribution in CV [%]	Color
264	32,572.6	334	7,157.17	382	5,310.4	70	4.7	Blue

Assay Class: High Sensitivity DNA Assay
 Data Path: C:\...xpert\data\XAD Files_OLD\2011-08-01\2011-08-01_10-43-13.xad

Created: 8/1/2011 10:43:13 AM
 Modified: 8/1/2011 12:41:03 PM

Electropherogram Summary Continued ...



Overall Results for sample 8 : BS-1

Number of peaks found: 9 Corr. Area 1: 4,577.8
 Noise: 0.4

Peak table for sample 8 : BS-1

Peak	Size [bp]	Conc. [pg/μl]	Molarity [pmol/l]	Observations
1	35	125.00	5,411.3	Lower Marker
2	53	139.63	3,976.8	
3	86	83.71	1,479.7	
4	263	893.90	5,152.6	
5	289	5,158.90	27,018.9	
6	361	94.48	396.5	
7	557	459.28	1,248.5	
8	703	537.37	1,158.2	
9	1,845	373.81	306.9	
10	1,870	452.70	366.9	
11	10,380	75.00	10.9	Upper Marker

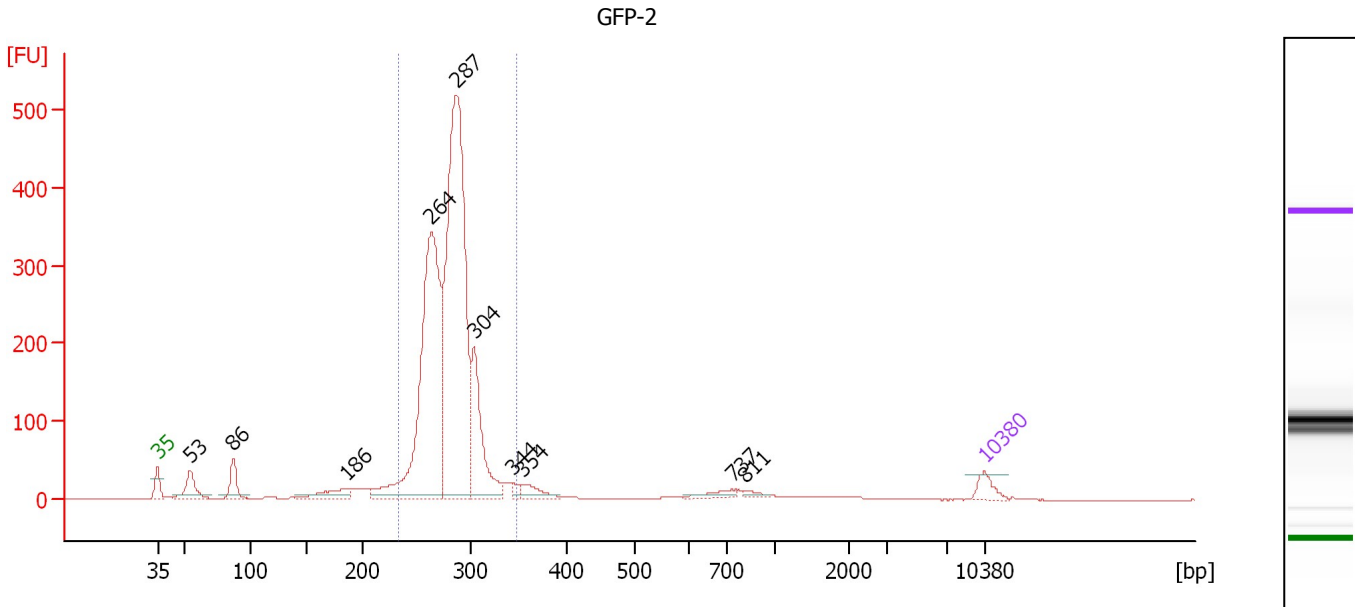
Region table for sample 8 : BS-1

From [bp]	Molarity [pmol/l]	Average Size [bp]	Conc. [pg/μl]	To [bp]	Corr. Area	% of Total	Size distribution in CV [%]	Color
229	32,576.2	285	6,129.26	342	4,577.8	64	4.5	Blue

Assay Class: High Sensitivity DNA Assay
 Data Path: C:\...xpert\data\XAD Files_OLD\2011-08-01\2011-08-01_10-43-13.xad

Created: 8/1/2011 10:43:13 AM
 Modified: 8/1/2011 12:41:03 PM

Electropherogram Summary Continued ...



Overall Results for sample 9 : GFP-2

Number of peaks found: 10 Corr. Area 1: 2,539.4
 Noise: 0.2

Peak table for sample 9 : GFP-2

Peak	Size [bp]	Conc. [pg/μl]	Molarity [pmol/l]	Observations
1	35	125.00	5,411.3	Lower Marker
2	53	232.36	6,583.4	
3	86	203.08	3,569.1	
4	186	159.17	1,295.8	
5	264	2,574.16	14,784.5	
6	287	3,361.12	17,762.5	
7	304	702.58	3,503.2	
8	344	42.89	189.0	
9	354	109.17	467.4	
10	737	59.57	122.5	
11	811	31.90	59.6	
12	10,380	75.00	10.9	Upper Marker

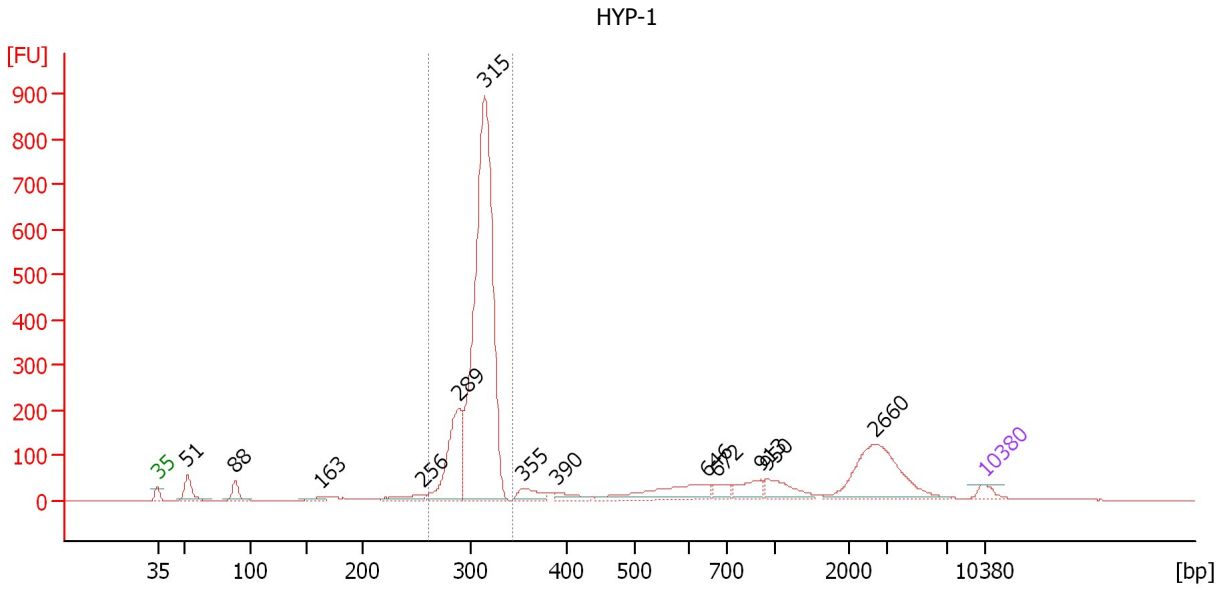
Region table for sample 9 : GFP-2

From [bp]	Molarity [pmol/l]	Average Size [bp]	Conc. [pg/μl]	To [bp]	Corr. Area	% of Total	Size distribution in CV [%]	Color
233	35,723.7	281	6,607.48	349	2,539.4	84	6.7	Blue

Assay Class: High Sensitivity DNA Assay
 Data Path: C:\...xpert\data\XAD Files_OLD\2011-08-01\2011-08-01_10-43-13.xad

Created: 8/1/2011 10:43:13 AM
 Modified: 8/1/2011 12:41:03 PM

Electropherogram Summary Continued ...



Overall Results for sample 10 : HYP-1

Number of peaks found: 13 Corr. Area 1: 2,556.3
 Noise: 0.1

Peak table for sample 10 : HYP-1

Peak	Size [bp]	Conc. [pg/μl]	Molarity [pmol/l]	Observations
1	35	125.00	5,411.3	Lower Marker
2	51	301.00	8,870.2	
3	88	195.57	3,379.7	
4	163	53.87	501.7	
5	256	131.75	779.5	
6	289	1,148.07	6,023.5	
7	315	5,771.15	27,795.9	
8	355	175.73	750.1	
9	390	108.71	422.7	
10	646	489.63	1,148.6	
11	672	114.48	258.1	
12	913	202.52	336.1	
13	950	262.14	417.9	
14	2,660	933.23	531.7	
15	10,380	75.00	10.9	Upper Marker

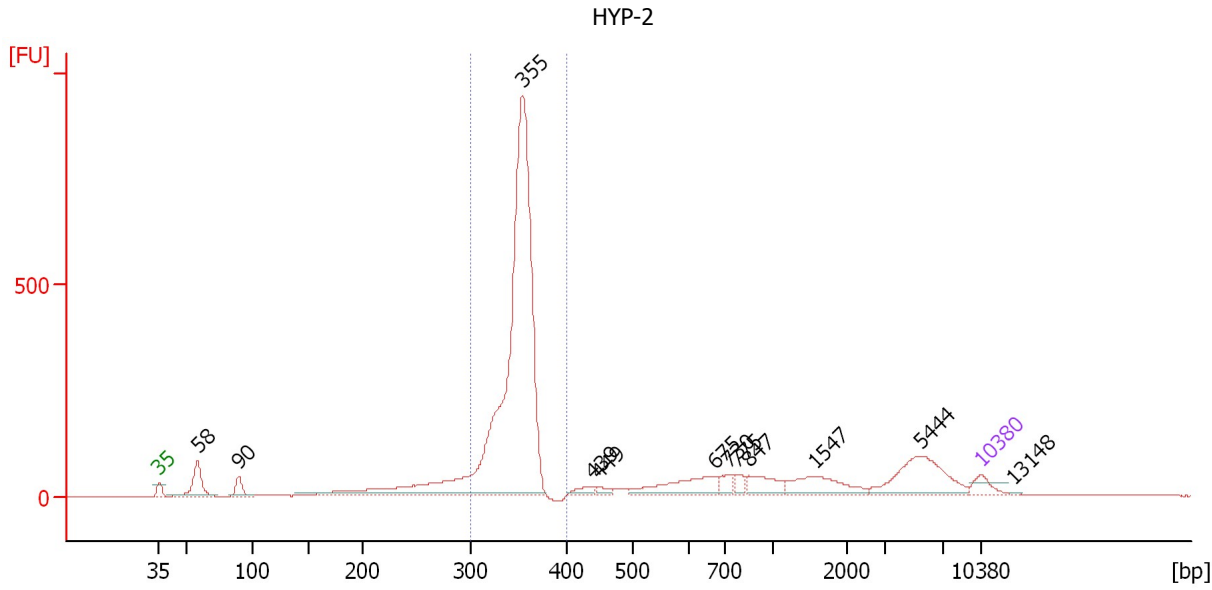
Region table for sample 10 : HYP-1

From [bp]	Molarity [pmol/l]	Average Size [bp]	Conc. [pg/μl]	To [bp]	Corr. Area	% of Total	Size distribution in CV [%]	Color
262	34,315.9	309	6,971.47	343	2,556.3	62	4.4	Blue

Assay Class: High Sensitivity DNA Assay
 Data Path: C:\...xpert\data\XAD Files_OLD\2011-08-01\2011-08-01_10-43-13.xad

Created: 8/1/2011 10:43:13 AM
 Modified: 8/1/2011 12:41:03 PM

Electropherogram Summary Continued ...



Overall Results for sample 11 : HYP-2

Number of peaks found: 12 Corr. Area 1: 2,662.0
 Noise: 0.1

Peak table for sample 11 : HYP-2

Peak	Size [bp]	Conc. [pg/μl]	Molarity [pmol/l]	Observations
1	35	125.00	5,411.3	Lower Marker
2	58	290.00	7,551.7	
3	90	109.26	1,844.2	
4	355	4,314.21	18,412.1	
5	439	63.07	217.4	
6	449	42.31	142.9	
7	675	319.63	717.5	
8	730	72.17	149.8	
9	775	57.92	113.2	
10	847	172.62	308.7	
11	1,547	244.23	239.2	
12	5,444	418.00	116.3	
13	10,380	75.00	10.9	Upper Marker
14	13,148	0.00	0.0	

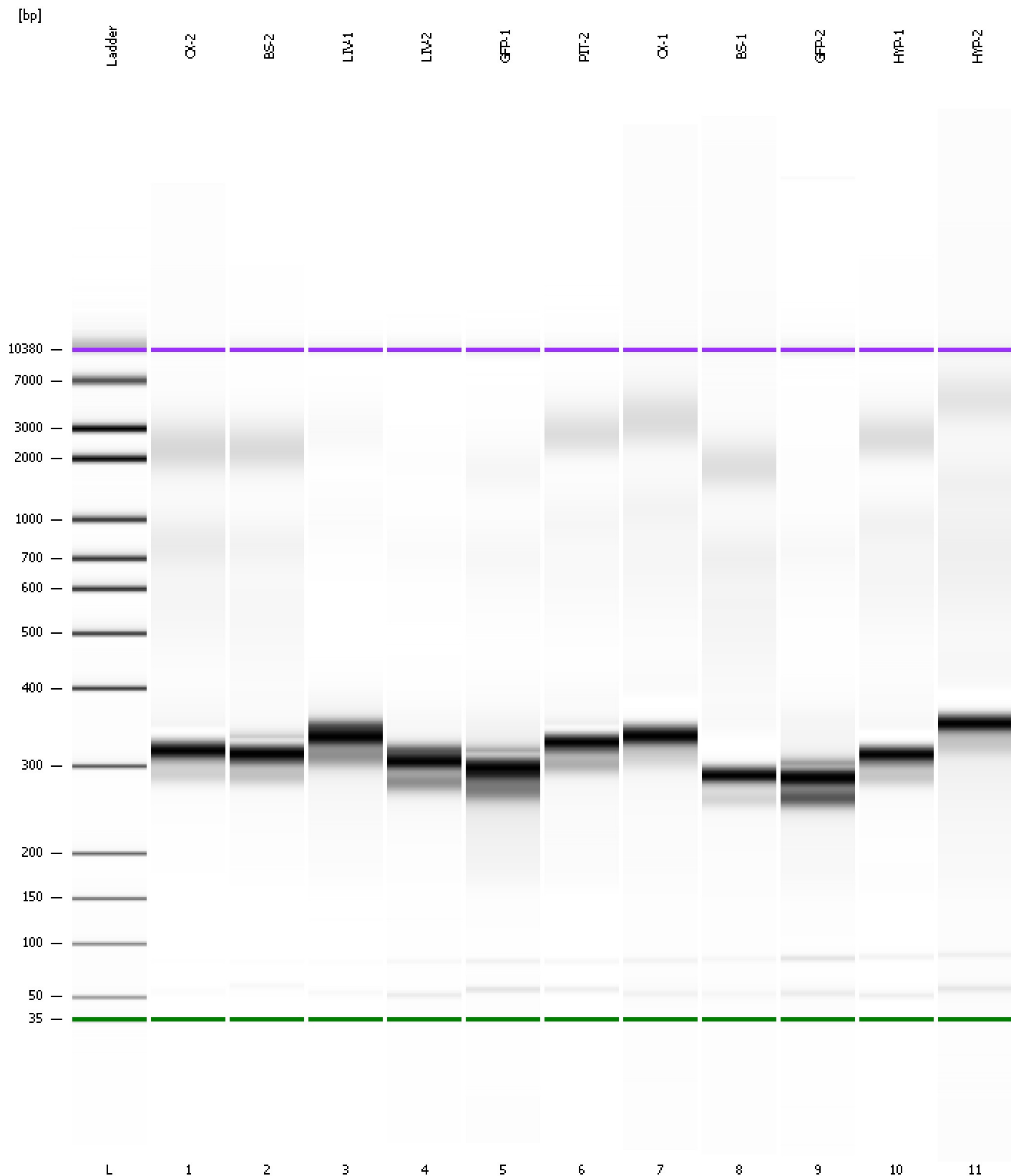
Region table for sample 11 : HYP-2

From [bp]	Molarity [pmol/l]	Average Size [bp]	Conc. [pg/μl]	To [bp]	Corr. Area	% of Total	Size distribution in CV [%]	Color
301	16,829.8	348	3,870.69	401	2,662.0	57	4.3	Blue

Assay Class: High Sensitivity DNA Assay
Data Path: C:\...xpert\data\XAD Files_OLD\2011-08-01\2011-08-01_10-43-13.xad

Created: 8/1/2011 10:43:13 AM
Modified: 8/1/2011 12:41:03 PM

Gel Image



Assay Class: High Sensitivity DNA Assay Created: 8/1/2011 10:43:13 AM
 Data Path: C:\...xpert\data\XAD Files_OLD\2011-08-01\2011-08-01_10-43-13.xad Modified: 8/1/2011 12:41:03 PM

Run Logbook

Description	Number	Source	Category	Sub Category	Time	Time Zone	User	Host
Run ended on port 1 (Number of wells acquired: 12)		Instrument	Run		8/1/2011 11:24:31 AM	(GMT --07:00) Pacific Standard Time	UC Davis	D8XSMGH1
Run started on port 1 (File: C:\Program Files\Agilent\2100 bioanalyzer\2100 expert\data\XAD Files\2011-08-01\2011-08-01_10-43-13.xad)		Instrument	Run		8/1/2011 10:43:18 AM	(GMT --07:00) Pacific Standard Time	UC Davis	D8XSMGH1
Product Number : G2938B		Instrument	Run		8/1/2011 10:43:18 AM	(GMT --07:00) Pacific Standard Time	UC Davis	D8XSMGH1
Name :		Instrument	Run		8/1/2011 10:43:18 AM	(GMT --07:00) Pacific Standard Time	UC Davis	D8XSMGH1
Vendor : Agilent Technologies		Instrument	Run		8/1/2011 10:43:18 AM	(GMT --07:00) Pacific Standard Time	UC Davis	D8XSMGH1
Serial# : DE13701086		Instrument	Run		8/1/2011 10:43:18 AM	(GMT --07:00) Pacific Standard Time	UC Davis	D8XSMGH1
Firmware : C.01.069		Instrument	Run		8/1/2011 10:43:18 AM	(GMT --07:00) Pacific Standard Time	UC Davis	D8XSMGH1
Cartridge : Electrode		Instrument	Run		8/1/2011 10:43:18 AM	(GMT --07:00) Pacific Standard Time	UC Davis	D8XSMGH1