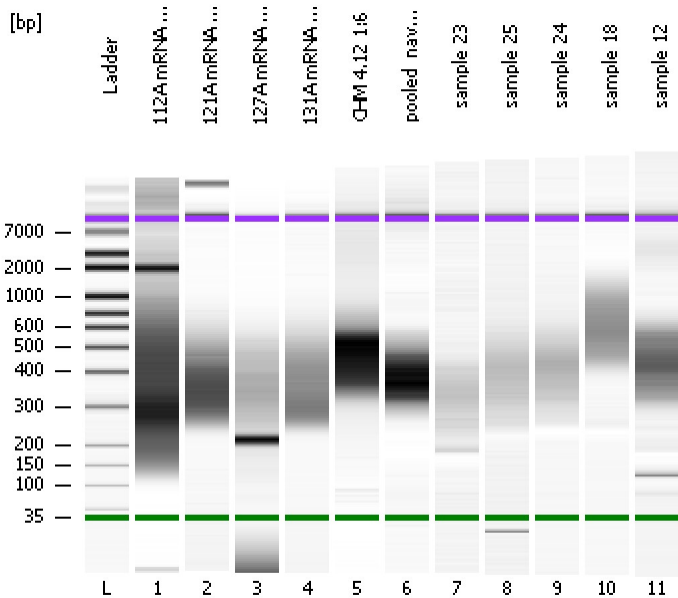


Assay Class: High Sensitivity DNA Assay  
Data Path: C:\...ents and Settings\Bioanalyzer\2014-02-13\2014-02-13\_004.xad

Created: 2/13/2014 5:03:45 PM  
Modified: 2/13/2014 5:50:52 PM

**Electrophoresis File Run Summary**



Instrument Information:

Instrument Name: DE13701086      Firmware: C.01.069  
Serial#: DE13701086      Type: G2938B

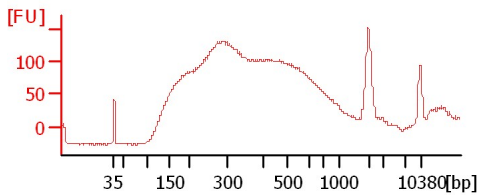
Assay Information:

Assay Origin Path: C:\Program Files\Agilent\2100 bioanalyzer\2100 expert\assays\dsDNA\High Sensitivity DNA.xsy  
Assay Class: High Sensitivity DNA Assay  
Version: 1.03  
Assay Comments: Copyright © 2003-2010 Agilent Technologies

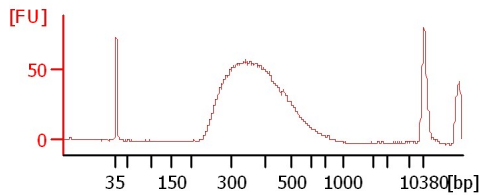
Chip Information:

Chip Lot #:   
Reagent Kit Lot #:   
Chip Comments:

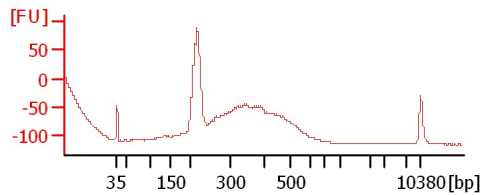
**112A mRNA Lib 1:12**



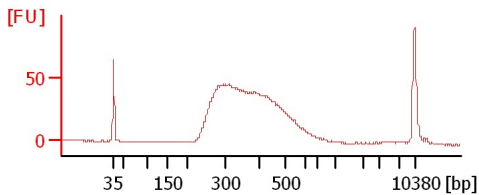
**121A mRNA Lib 1:11**



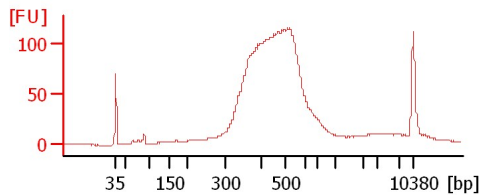
**127A mRNA Lib 1:11**



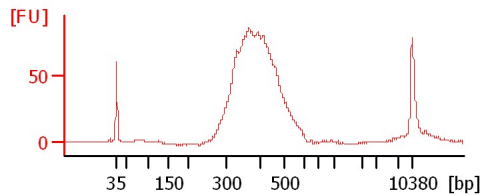
**131A mRNA Lib 1:12**



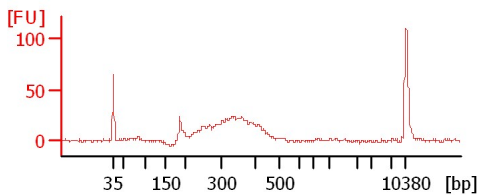
**CHM 4.12 1:6**



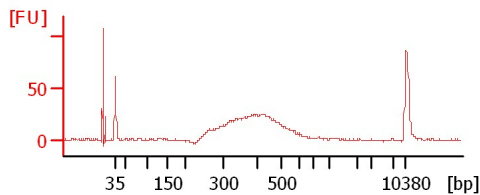
**pooled\_navnet**



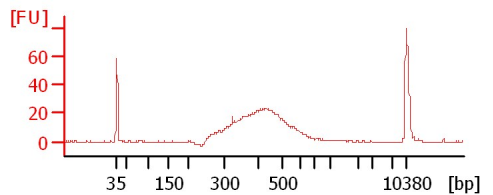
**sample 23**



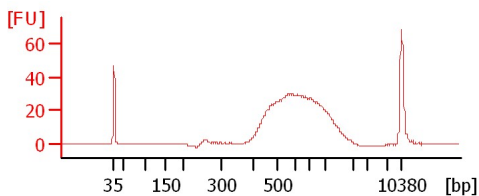
**sample 25**



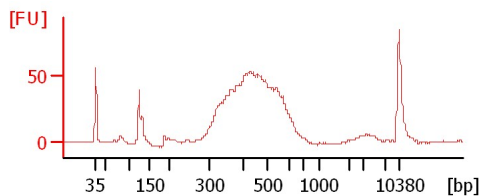
**sample 24**



**sample 18**



**sample 12**



Assay Class: High Sensitivity DNA Assay  
 Data Path: C:\...ents and Settings\Bioanalyzer\2014-02-13\2014-02-13\_004.xad

Created: 2/13/2014 5:03:45 PM  
 Modified: 2/13/2014 5:50:52 PM

**Electrophoresis File Run Summary (Chip Summary)**

Sample Name	Sample Comment	Rest. Digest	Status	Observation	Result Label	Result Color
112A mRNA Lib 1:12		<input type="checkbox"/>	✓			
121A mRNA Lib 1:11		<input type="checkbox"/>	✓			
127A mRNA Lib 1:11		<input type="checkbox"/>	✓			
131A mRNA Lib 1:12		<input type="checkbox"/>	✓			
CHM 4.12 1:6		<input type="checkbox"/>	✓			
pooled_navneet		<input type="checkbox"/>	✓			
sample 23		<input type="checkbox"/>	✓			
sample 25		<input type="checkbox"/>	✓			
sample 24		<input type="checkbox"/>	✓			
sample 18		<input type="checkbox"/>	✓			
sample 12		<input type="checkbox"/>	✓			
Ladder		<input type="checkbox"/>	✓			

**Chip Lot #**

**Reagent Kit Lot #**

**Chip Comments :**

Assay Class: High Sensitivity DNA Assay  
Data Path: C:\...ents and Settings\Bioanalyzer\2014-02-13\2014-02-13\_004.xad

Created: 2/13/2014 5:03:45 PM  
Modified: 2/13/2014 5:50:52 PM

**Electrophoresis Assay Details**

**General Analysis Settings**

Number of Available Sample and Ladder Wells (Max.) : 12  
Minimum Visible Range [s] : 32  
Maximum Visible Range [s] : 138  
Start Analysis Time Range [s] : 33  
End Analysis Time Range [s] : 137.5  
Ladder Concentration [pg/μl] : 1950  
Uses Standard Area for Ladder Fragments  
Lower Marker Concentration [pg/μl] : 125  
Upper Marker Concentration [pg/μl] : 75  
Used Upper Marker for Quantitation  
Standard Curve Fit is Point to Point  
Show Data Aligned to Lower and Upper Marker

**Integrator Settings**

Integration Start Time [s] : 33.05  
Integration End Time [s] : 137  
Slope Threshold : 0.8  
Height Threshold [FU] : 5  
Area Threshold : 0.1  
Width Threshold [s] : 0.6  
Baseline Plateau [s] : 0.5

**Filter Settings**

Filter Width [s] : 0.5  
Polynomial Order : 4

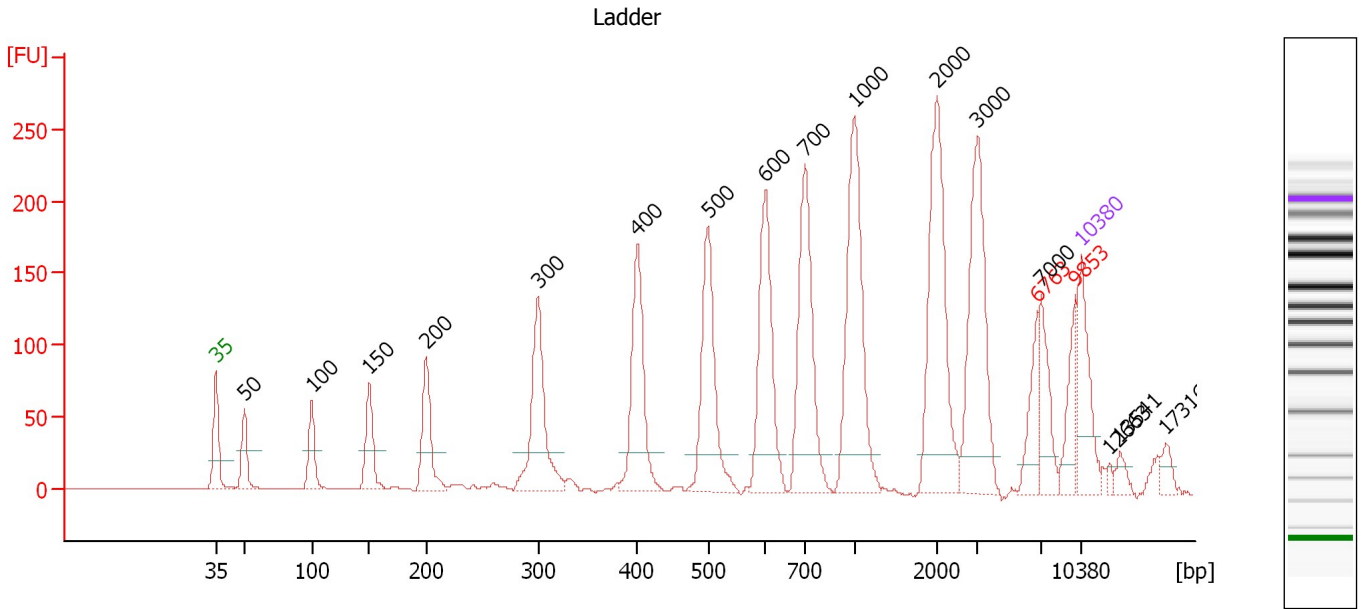
**Ladder**

Ladder Peak	Size	Area
1	35	160
2	50	210
3	100	208
4	150	221
5	200	242
6	300	270
7	400	305
8	500	306
9	600	336
10	700	321
11	1000	366
12	2000	413
13	3000	411
14	7000	400
15	10380	214

Assay Class: High Sensitivity DNA Assay  
 Data Path: C:\...ents and Settings\Bioanalyzer\2014-02-13\2014-02-13\_004.xad

Created: 2/13/2014 5:03:45 PM  
 Modified: 2/13/2014 5:50:52 PM

**Electropherogram Summary**



**Overall Results for Ladder**

Noise: 0.1

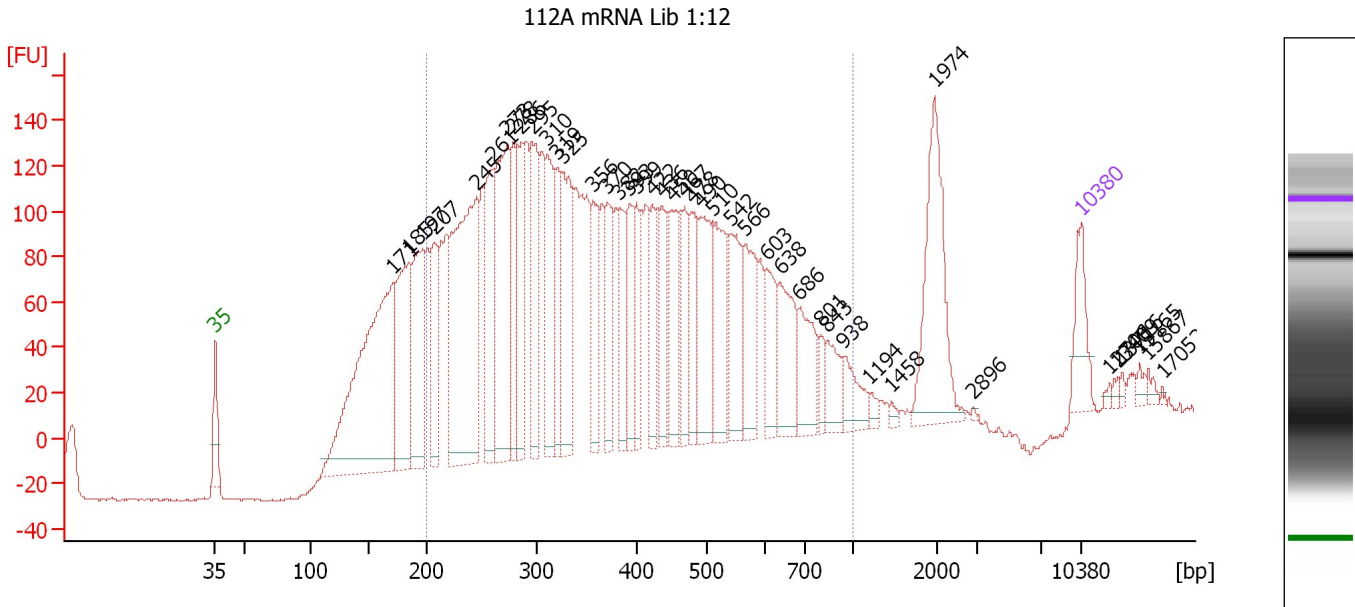
**Peak table for Ladder**

Peak	Aligned Migration Time [s]	Size [bp]	Conc. [pg/μl]	Molarity [pmol/l]	Observations
1	43.00	35	125.00	5,411.3	Lower Marker
2	45.33	50	150.00	4,545.5	Ladder Peak
3	50.76	100	150.00	2,272.7	Ladder Peak
4	55.41	150	150.00	1,515.2	Ladder Peak
5	60.03	200	150.00	1,136.4	Ladder Peak
6	69.03	300	150.00	757.6	Ladder Peak
7	77.09	400	150.00	568.2	Ladder Peak
8	82.78	500	150.00	454.5	Ladder Peak
9	87.44	600	150.00	378.8	Ladder Peak
10	90.63	700	150.00	324.7	Ladder Peak
11	94.59	1,000	150.00	227.3	Ladder Peak
12	101.28	2,000	150.00	113.6	Ladder Peak
13	104.59	3,000	150.00	75.8	Ladder Peak
14	109.38	6,763	0.00	0.0	excluded peak
15	109.68	7,000	150.00	32.5	Ladder Peak
16	112.48	9,853	0.00	0.0	excluded peak
17	113.00	10,380	75.00	10.9	Upper Marker
18	115.24	12,663	0.00	0.0	
19	116.10	13,541	0.00	0.0	
20	119.81	17,316	0.00	0.0	

Assay Class: High Sensitivity DNA Assay  
 Data Path: C:\...ents and Settings\Bioanalyzer\2014-02-13\2014-02-13\_004.xad

Created: 2/13/2014 5:03:45 PM  
 Modified: 2/13/2014 5:50:52 PM

**Electropherogram Summary Continued ...**



**Overall Results for sample 1 : 112A mRNA Lib 1:12**

Number of peaks found: 43      Corr. Area 1: 4,160.8  
 Noise: 0.5

**Peak table for sample 1 : 112A mRNA Lib 1:12**

Peak	Aligned Migration Time [s]	Size [bp]	Conc. [pg/μl]	Molarity [pmol/l]	Observations
1	43.00	35	125.00	5,411.3	Lower Marker
2	57.31	171	914.15	8,120.7	
3	58.60	185	386.43	3,172.1	
4	59.77	197	311.56	2,393.8	
5	60.67	207	200.12	1,463.6	
6	64.12	245	693.46	4,280.6	
7	65.50	261	268.19	1,558.3	
8	66.58	273	436.07	2,422.6	
9	67.09	278	192.18	1,045.6	
10	67.74	286	189.10	1,003.0	
11	68.60	295	252.60	1,296.4	
12	69.85	310	218.45	1,067.1	
13	70.59	319	158.55	752.5	
14	71.02	325	255.42	1,192.2	
15	73.52	356	164.23	699.7	
16	74.68	370	148.23	606.9	
17	75.63	382	123.86	491.5	
18	76.49	393	130.86	505.1	
19	77.05	399	110.82	420.3	
20	78.34	422	124.78	448.0	
21	79.12	436	106.04	368.8	
22	79.94	450	127.42	429.0	
23	80.93	467	109.38	354.6	
24	81.53	478	129.36	410.0	
25	82.22	490	198.43	613.4	

Assay Class: High Sensitivity DNA Assay  
 Data Path: C:\...ents and Settings\Bioanalyzer\2014-02-13\2014-02-13\_004.xad


Created: 2/13/2014 5:03:45 PM  
 Modified: 2/13/2014 5:50:52 PM

**Electropherogram Summary Continued ...**

**... Peak table for sample 1 : 112A mRNA Lib 1:12**

Peak	Aligned Migration Time [s]	Size [bp]	Conc. [pg/μl]	Molarity [pmol/l]	Observations
26	83.26	510	184.69	548.5	
27	84.72	542	166.42	465.5	
28	85.84	566	149.79	401.2	
29	87.53	603	100.12	251.7	
30	88.65	638	151.81	360.6	
31	90.20	686	122.97	271.4	
32	91.97	801	35.55	67.2	
33	92.53	843	66.90	120.2	
34	93.78	938	65.35	105.5	
35	95.89	1,194	14.68	18.6	
36	97.66	1,458	8.47	8.8	
37	101.10	1,974	252.16	193.5	
38	104.25	2,896	2.64	1.4	
39	113.00	10,380	75.00	10.9	Upper Marker
40	115.28	12,706	0.00	0.0	
41	115.97	13,409	0.00	0.0	
42	116.28	13,716	0.00	0.0	
43	117.70	15,165	0.00	0.0	
44	118.39	15,867	0.00	0.0	
45	119.55	17,052	0.00	0.0	

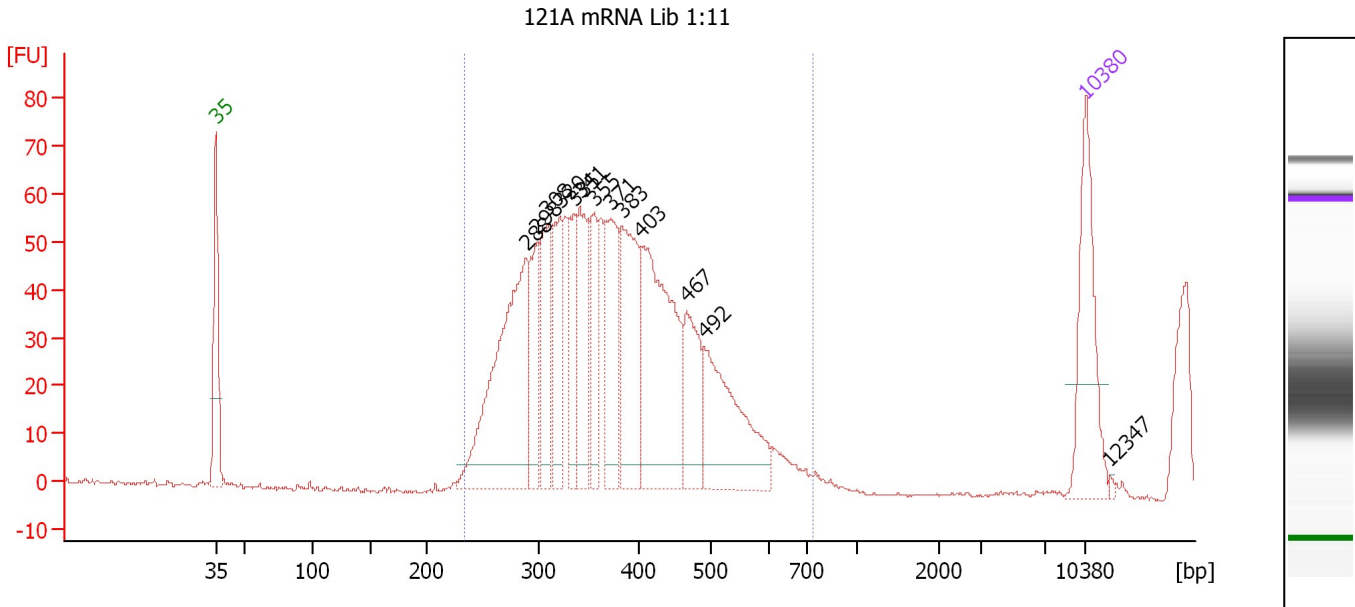
**Region table for sample 1 : 112A mRNA Lib 1:12**

From [bp]	To [bp]	Average Size [bp]	Molarity [pmol/l]	Conc. [pg/μl]	Corr. Area	% of Total	Size distribution in CV [%]	Color
200	1,000	400	27,689.6	6,105.12	4,160.8	81	38.2	

Assay Class: High Sensitivity DNA Assay  
 Data Path: C:\...ents and Settings\Bioanalyzer\2014-02-13\2014-02-13\_004.xad

Created: 2/13/2014 5:03:45 PM  
 Modified: 2/13/2014 5:50:52 PM

**Electropherogram Summary Continued ...**



**Overall Results for sample 2 : 121A mRNA Lib 1:11**

Number of peaks found: 13                      Corr. Area 1: 670.3  
 Noise: 0.3

**Peak table for sample 2 : 121A mRNA Lib 1:11**

Peak	Aligned Migration Time [s]	Size [bp]	Conc. [pg/μl]	Molarity [pmol/l]	Observations
1	43.00	35	125.00	5,411.3	Lower Marker
2	67.98	288	249.50	1,311.4	
3	68.88	298	70.74	359.3	
4	69.70	308	74.84	367.9	
5	70.68	320	79.18	374.4	
6	71.88	335	62.46	282.2	
7	72.31	341	88.99	395.8	
8	73.43	355	52.15	222.9	
9	74.76	371	94.90	387.5	
10	75.70	383	123.23	487.8	
11	77.25	403	199.65	751.2	
12	80.90	467	70.24	228.0	
13	82.31	492	126.57	390.0	
14	113.00	10,380	75.00	10.9	Upper Marker
15	114.93	12,347	0.00	0.0	

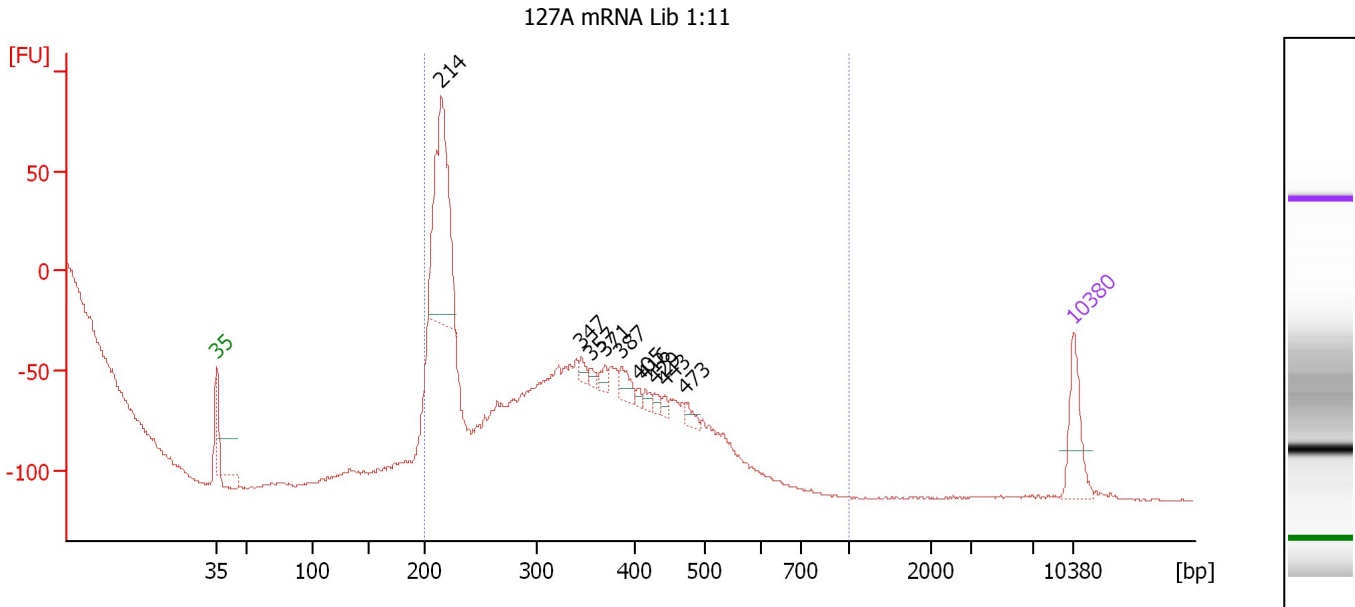
**Region table for sample 2 : 121A mRNA Lib 1:11**

From [bp]	To [bp]	Average Size [bp]	Molarity [pmol/l]	Conc. [pg/μl]	Corr. Area	% of Total	Size distribution in CV [%]	Color
234	730	353	3,235.7	729.78	670.3	100	15.6	Blue

Assay Class: High Sensitivity DNA Assay  
 Data Path: C:\...ents and Settings\Bioanalyzer\2014-02-13\2014-02-13\_004.xad

Created: 2/13/2014 5:03:45 PM  
 Modified: 2/13/2014 5:50:52 PM

**Electropherogram Summary Continued ...**



**Overall Results for sample 3 : 127A mRNA Lib 1:11**

Number of peaks found: 10                      Corr. Area 1: 407.6  
 Noise: 0.3

**Peak table for sample 3 : 127A mRNA Lib 1:11**

Peak	Aligned Migration Time [s]	Size [bp]	Conc. [pg/μl]	Molarity [pmol/l]	Observations
1	43.00	35	125.00	5,411.3	Lower Marker
2	61.30	214	432.44	3,059.0	
3	72.78	347	15.03	65.7	
4	73.61	357	12.22	51.9	
5	74.74	371	16.49	67.4	
6	76.04	387	32.30	126.5	
7	77.39	405	8.59	32.1	
8	78.00	416	12.65	46.1	
9	78.74	429	11.58	40.9	
10	79.57	443	10.26	35.1	
11	81.26	473	16.98	54.4	
12	113.00	10,380	75.00	10.9	Upper Marker

**Region table for sample 3 : 127A mRNA Lib 1:11**

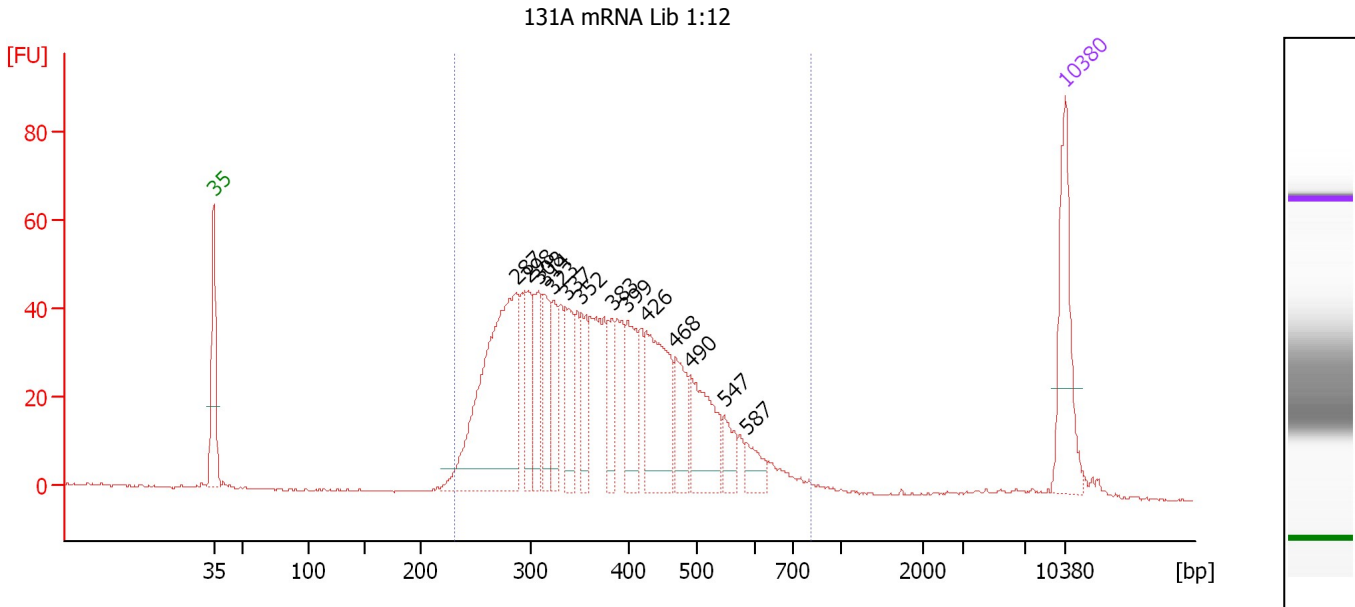
From [bp]	To [bp]	Average Size [bp]	Molarity [pmol/l]	Conc. [pg/μl]	Corr. Area	% of Total	Size distribution in CV [%]	Color
200	1,000	251	4,299.8	656.80	407.6	100	26.4	Blue



Assay Class: High Sensitivity DNA Assay  
 Data Path: C:\...ents and Settings\Bioanalyzer\2014-02-13\2014-02-13\_004.xad

Created: 2/13/2014 5:03:45 PM  
 Modified: 2/13/2014 5:50:52 PM

**Electropherogram Summary Continued ...**



**Overall Results for sample 4 : 131A mRNA Lib 1:12**

Number of peaks found: 14      Corr. Area 1: 1,130.5  
 Noise: 0.2

**Peak table for sample 4 : 131A mRNA Lib 1:12**

Peak	Aligned Migration Time [s]	Size [bp]	Conc. [pg/μl]	Molarity [pmol/l]	Observations
1	43.00	35	125.00	5,411.3	Lower Marker
2	67.87	287	325.85	1,719.9	
3	68.83	298	61.05	310.7	
4	69.67	308	55.43	272.8	
5	70.15	314	61.13	295.1	
6	70.85	323	47.18	221.6	
7	71.99	337	53.92	242.7	
8	73.22	352	50.33	216.7	
9	75.76	383	40.17	158.7	
10	77.04	399	66.53	252.5	
11	78.57	426	125.62	446.9	
12	80.98	468	53.66	173.6	
13	82.21	490	86.06	266.2	
14	84.97	547	26.77	74.1	
15	86.82	587	21.94	56.7	
16	113.00	10,380	75.00	10.9	Upper Marker

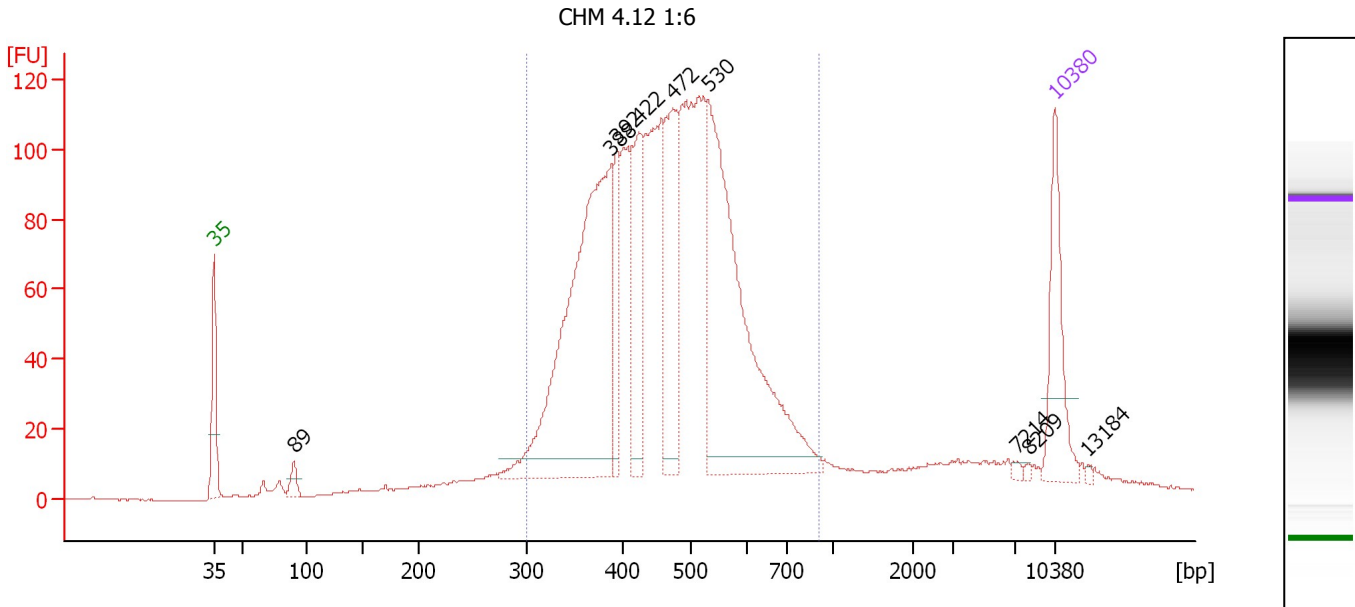
**Region table for sample 4 : 131A mRNA Lib 1:12**

From [bp]	To [bp]	Average Size [bp]	Molarity [pmol/l]	Conc. [pg/μl]	Corr. Area	% of Total	Size distribution in CV [%]	Color
232	808	382	6,259.4	1,444.86	1,130.5	97	26.1	Blue

Assay Class: High Sensitivity DNA Assay  
 Data Path: C:\...ents and Settings\Bioanalyzer\2014-02-13\2014-02-13\_004.xad

Created: 2/13/2014 5:03:45 PM  
 Modified: 2/13/2014 5:50:52 PM

**Electropherogram Summary Continued ...**



**Overall Results for sample 5 : CHM 4.12 1:6**

Number of peaks found: 9                      Corr. Area 1: 2,117.0  
 Noise: 0.2

**Peak table for sample 5 : CHM 4.12 1:6**

Peak	Aligned Migration Time [s]	Size [bp]	Conc. [pg/μl]	Molarity [pmol/l]	Observations
1	43.00	35	125.00	5,411.3	Lower Marker
2	49.62	89	18.10	306.4	
3	76.09	388	499.93	1,954.6	
4	76.49	392	75.86	292.9	
5	78.36	422	127.10	456.2	
6	81.20	472	159.95	513.3	
7	84.17	530	439.30	1,256.2	
8	109.89	7,214	3.10	0.7	
9	110.87	8,209	2.13	0.4	
10	113.00	10,380	75.00	10.9	Upper Marker
11	115.75	13,184	0.00	0.0	

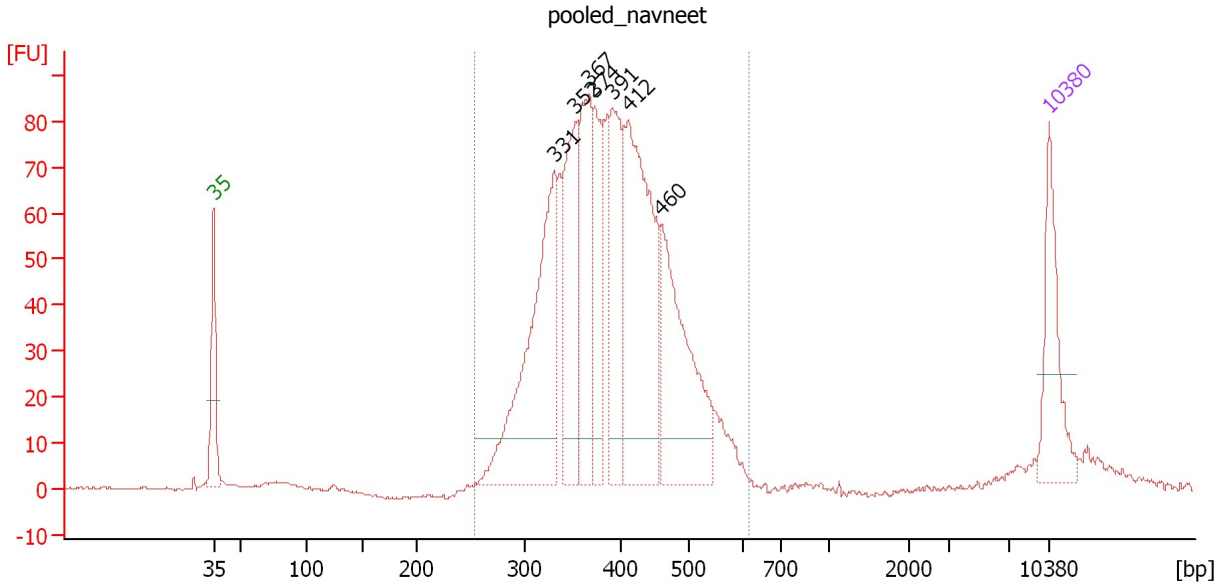
**Region table for sample 5 : CHM 4.12 1:6**

From [bp]	To [bp]	Average Size [bp]	Molarity [pmol/l]	Conc. [pg/μl]	Corr. Area	% of Total	Size distribution in CV [%]	Color
300	903	469	7,096.2	2,077.17	2,117.0	89	21.4	Blue

Assay Class: High Sensitivity DNA Assay  
 Data Path: C:\...ents and Settings\Bioanalyzer\2014-02-13\2014-02-13\_004.xad

Created: 2/13/2014 5:03:45 PM  
 Modified: 2/13/2014 5:50:52 PM

**Electropherogram Summary Continued ...**



**Setpoint Deviations for sample 6 : pooled\_navneet**

Height Threshold [FU] : 10

**Overall Results for sample 6 : pooled\_navneet**

Number of peaks found: 7                      Corr. Area 1: 1,363.0  
 Noise: 0.3

**Peak table for sample 6 : pooled\_navneet**

Peak	Aligned Migration Time [s]	Size [bp]	Conc. [pg/μl]	Molarity [pmol/l]	Observations
1	43.00	35	125.00	5,411.3	Lower Marker
2	71.52	331	329.58	1,509.5	
3	73.26	352	188.96	812.3	
4	74.42	367	165.12	682.0	
5	74.96	374	97.31	394.7	
6	76.39	391	145.73	564.3	
7	77.78	412	323.87	1,191.1	
8	80.50	460	228.49	752.8	
9	113.00	10,380	75.00	10.9	Upper Marker

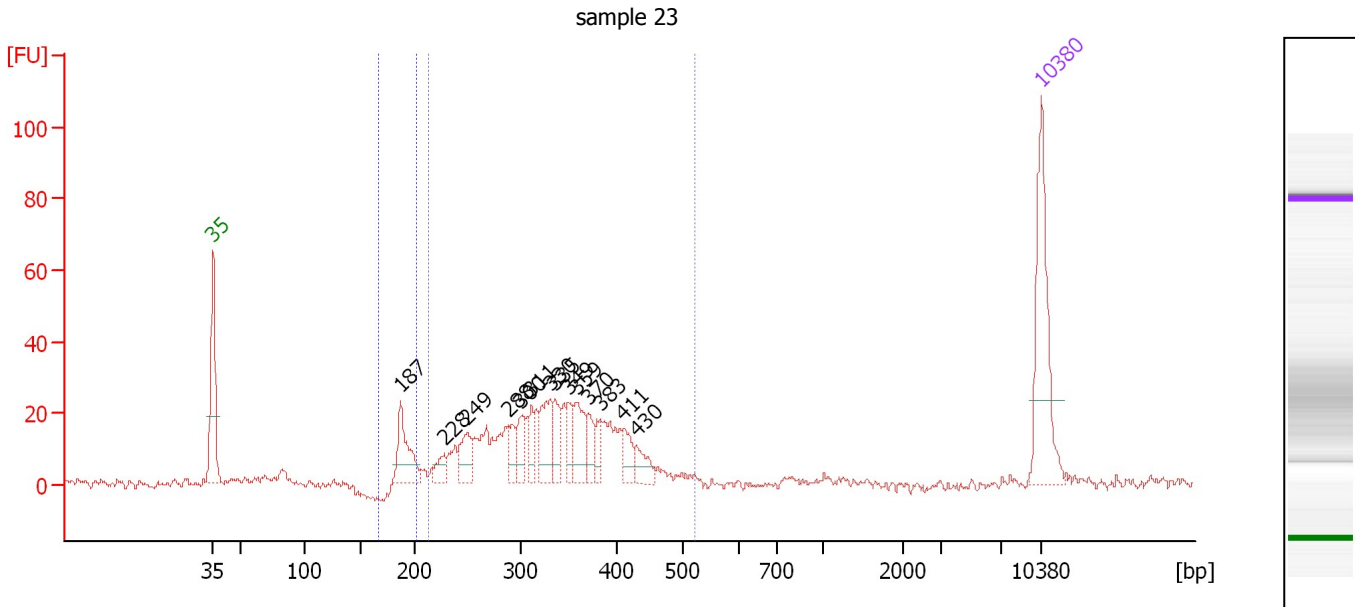
**Region table for sample 6 : pooled\_navneet**

From [bp]	To [bp]	Average Size [bp]	Molarity [pmol/l]	Conc. [pg/μl]	Corr. Area	% of Total	Size distribution in CV [%]	Color
254	612	396	6,702.0	1,689.36	1,363.0	97	16.7	Blue

Assay Class: High Sensitivity DNA Assay  
 Data Path: C:\...ents and Settings\Bioanalyzer\2014-02-13\2014-02-13\_004.xad

Created: 2/13/2014 5:03:45 PM  
 Modified: 2/13/2014 5:50:52 PM

**Electropherogram Summary Continued ...**



**Overall Results for sample 7 : sample 23**

Number of peaks found: 14                      Corr. Area 1: 427.5  
 Noise: 1.1    Corr. Area 2: 37.2

**Peak table for sample 7 : sample 23**

Peak	Aligned Migration Time [s]	Size [bp]	Conc. [pg/μl]	Molarity [pmol/l]	Observations
1	43.00	35	125.00	5,411.3	Lower Marker
2	58.87	187	52.32	423.0	
3	62.56	228	14.11	93.7	
4	64.41	249	28.42	173.2	
5	67.97	288	19.11	100.5	
6	69.05	300	24.87	125.5	
7	69.91	311	19.60	95.5	
8	71.49	330	38.18	175.1	
9	71.89	335	23.59	106.5	
10	73.02	349	19.72	85.5	
11	73.79	359	32.36	136.6	
12	74.69	370	18.19	74.5	
13	75.72	383	14.16	56.0	
14	77.71	411	18.15	66.9	
15	78.79	430	17.89	63.1	
16	113.00	10,380	75.00	10.9	Upper Marker

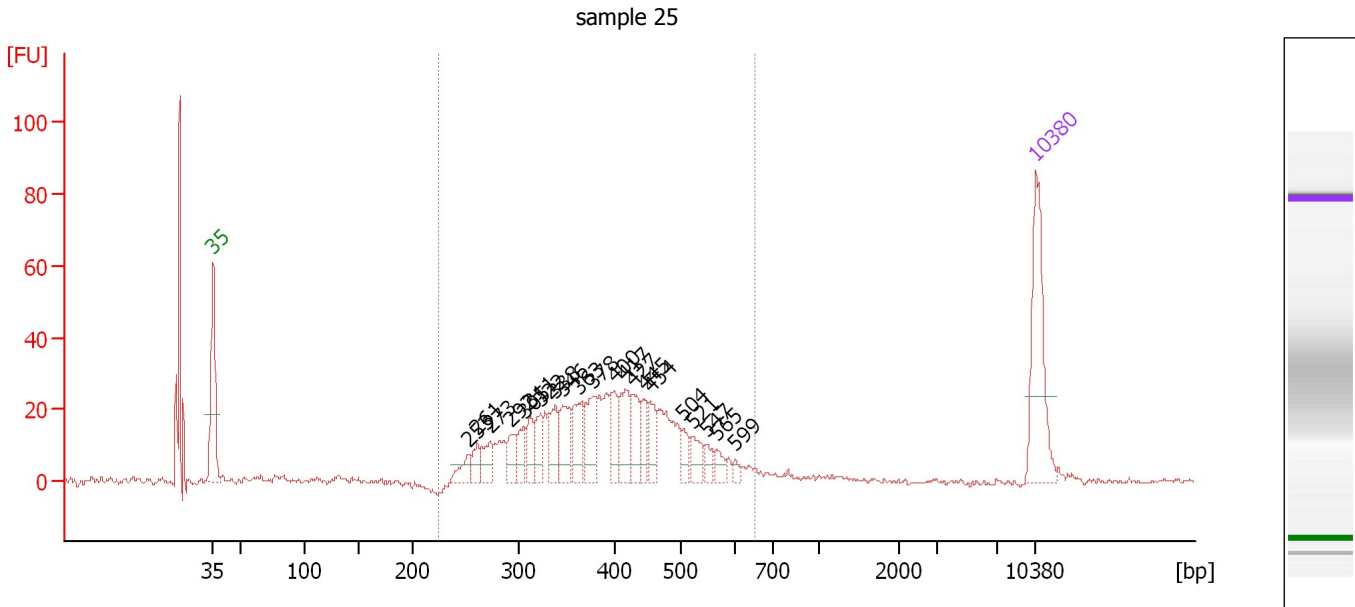
**Region table for sample 7 : sample 23**

From [bp]	To [bp]	Average Size [bp]	Molarity [pmol/l]	Conc. [pg/μl]	Corr. Area	% of Total	Size distribution in CV [%]	Color
167	201	190	388.7	48.85	37.2	7	2.5	Blue
212	520	335	2,276.3	478.80	427.5	82	18.6	Dark Blue

Assay Class: High Sensitivity DNA Assay  
 Data Path: C:\...ents and Settings\Bioanalyzer\2014-02-13\2014-02-13\_004.xad

Created: 2/13/2014 5:03:45 PM  
 Modified: 2/13/2014 5:50:52 PM

**Electropherogram Summary Continued ...**



**Overall Results for sample 8 : sample 25**

Number of peaks found: 21                      Corr. Area 1: 510.8  
 Noise: 0.5

**Peak table for sample 8 : sample 25**

Peak	Aligned Migration Time [s]	Size [bp]	Conc. [pg/μl]	Molarity [pmol/l]	Observations
1	43.00	35	125.00	5,411.3	Lower Marker
2	64.78	253	17.75	106.4	
3	65.50	261	16.83	97.8	
4	66.64	273	24.14	133.8	
5	68.31	292	21.64	112.3	
6	69.45	305	19.88	98.7	
7	69.95	311	22.92	111.6	
8	70.81	322	22.40	105.4	
9	72.08	338	35.57	159.6	
10	72.76	346	39.53	173.0	
11	74.12	363	34.61	144.4	
12	75.30	378	37.45	150.2	
13	77.12	400	29.02	109.8	
14	78.07	417	42.95	156.0	
15	78.66	427	29.14	103.3	
16	79.66	445	20.98	71.4	
17	80.15	454	22.52	75.2	
18	82.97	504	14.13	42.5	
19	83.78	521	17.56	51.0	
20	84.96	547	11.06	30.7	
21	85.83	565	10.14	27.2	
22	87.41	599	4.51	11.4	
23	113.00	10,380	75.00	10.9	Upper Marker

Assay Class: High Sensitivity DNA Assay  
Data Path: C:\...ents and Settings\Bioanalyzer\2014-02-13\2014-02-13\_004.xad

Created: 2/13/2014 5:03:45 PM  
Modified: 2/13/2014 5:50:52 PM

**Electropherogram Summary Continued ...**

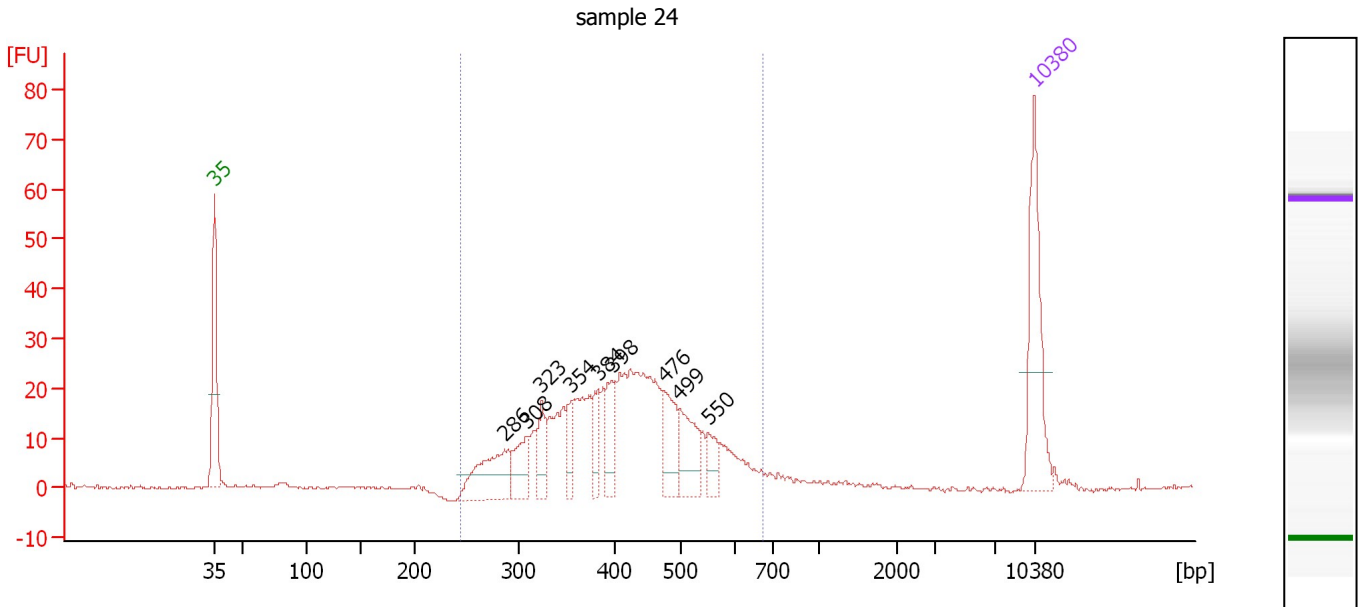
... Region table for sample 8 : sample 25

From [bp]	To [bp]	Average Size [bp]	Molarity [pmol/l]	Conc. [pg/μl]	Corr. Area	% of Total	Size distribution in CV [%]	Color
225	650	399	2,650.6	651.53	510.8	84	21.6	■

Assay Class: High Sensitivity DNA Assay  
 Data Path: C:\...ents and Settings\Bioanalyzer\2014-02-13\2014-02-13\_004.xad

Created: 2/13/2014 5:03:45 PM  
 Modified: 2/13/2014 5:50:52 PM

**Electropherogram Summary Continued ...**



**Overall Results for sample 9 : sample 24**

Number of peaks found: 9                      Corr. Area 1: 434.3  
 Noise: 0.2

**Peak table for sample 9 : sample 24**

Peak	Aligned Migration Time [s]	Size [bp]	Conc. [pg/μl]	Molarity [pmol/l]	Observations
1	43.00	35	125.00	5,411.3	Lower Marker
2	67.73	286	75.53	400.8	
3	69.69	308	38.74	190.5	
4	70.92	323	30.29	141.9	
5	73.42	354	25.55	109.2	
6	75.79	384	26.52	104.7	
7	76.93	398	33.88	129.0	
8	81.39	476	48.23	153.7	
9	82.71	499	47.85	145.4	
10	85.13	550	20.15	55.5	
11	113.00	10,380	75.00	10.9	Upper Marker

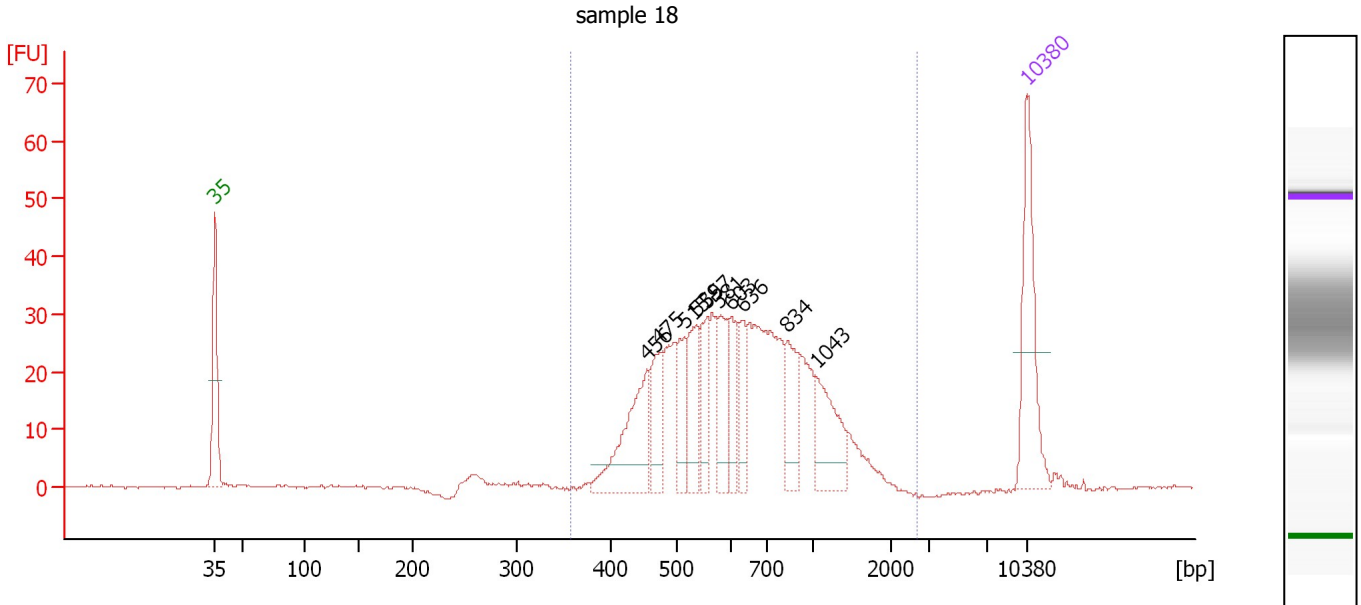
**Region table for sample 9 : sample 24**

From [bp]	To [bp]	Average Size [bp]	Molarity [pmol/l]	Conc. [pg/μl]	Corr. Area	% of Total	Size distribution in CV [%]	Color
243	675	420	2,473.8	642.65	434.3	95	21.0	Blue

Assay Class: High Sensitivity DNA Assay  
 Data Path: C:\...ents and Settings\Bioanalyzer\2014-02-13\2014-02-13\_004.xad

Created: 2/13/2014 5:03:45 PM  
 Modified: 2/13/2014 5:50:52 PM

**Electropherogram Summary Continued ...**



**Overall Results for sample 10 : sample 18**

Number of peaks found: 10                      Corr. Area 1: 544.4  
 Noise: 0.2

**Peak table for sample 10 : sample 18**

Peak	Aligned Migration Time [s]	Size [bp]	Conc. [pg/μl]	Molarity [pmol/l]	Observations
1	43.00	35	125.00	5,411.3	Lower Marker
2	80.30	456	99.04	328.8	
3	81.36	475	49.21	157.0	
4	83.47	515	37.99	111.8	
5	84.58	539	52.56	147.9	
6	85.45	557	39.67	107.9	
7	86.55	581	46.11	120.2	
8	87.52	603	37.53	94.4	
9	88.58	636	32.82	78.2	
10	92.40	834	46.51	84.5	
11	94.88	1,043	55.98	81.4	
12	113.00	10,380	75.00	10.9	Upper Marker

**Region table for sample 10 : sample 18**

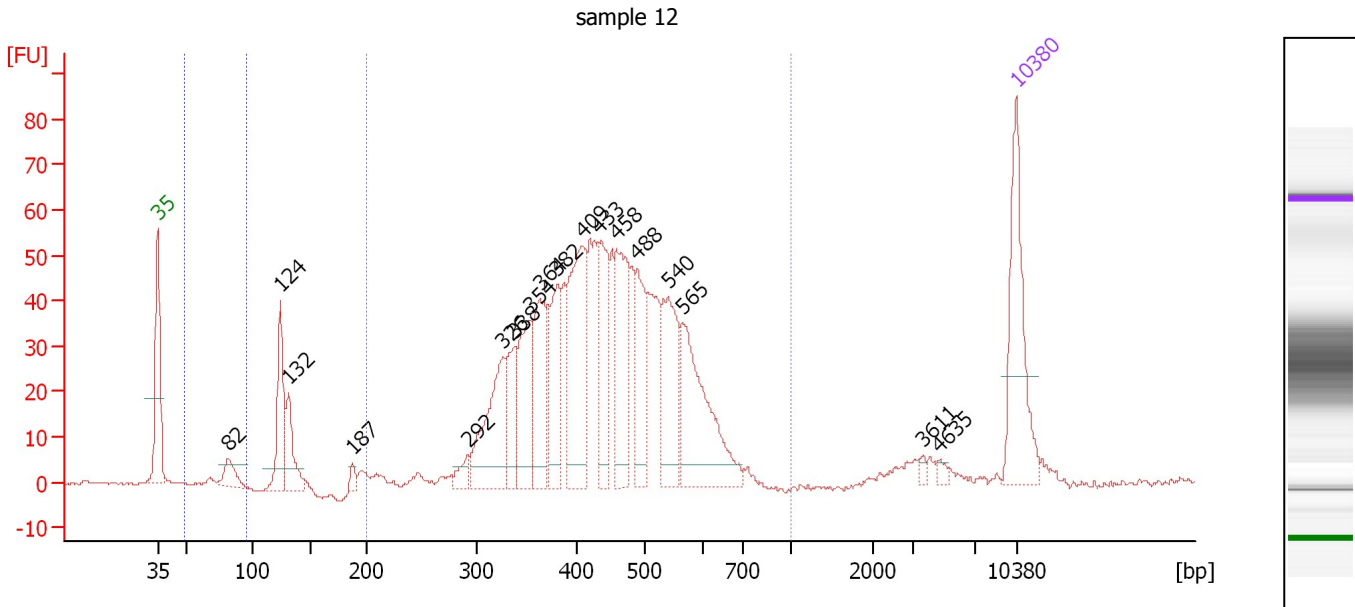
From [bp]	To [bp]	Average Size [bp]	Molarity [pmol/l]	Conc. [pg/μl]	Corr. Area	% of Total	Size distribution in CV [%]	Color
357	2,702	706	1,929.8	779.29	544.4	98	40.0	Blue



Assay Class: High Sensitivity DNA Assay  
 Data Path: C:\...ents and Settings\Bioanalyzer\2014-02-13\2014-02-13\_004.xad

Created: 2/13/2014 5:03:45 PM  
 Modified: 2/13/2014 5:50:52 PM

**Electropherogram Summary Continued ...**



**Overall Results for sample 11 : sample 12**

Number of peaks found: 18      Corr. Area 1: 965.3  
 Noise: 0.2      Corr. Area 2: 11.4

**Peak table for sample 11 : sample 12**

Peak	Aligned Migration Time [s]	Size [bp]	Conc. [pg/μl]	Molarity [pmol/l]	Observations
1	43.00	35	125.00	5,411.3	Lower Marker
2	48.77	82	24.43	453.3	
3	53.00	124	73.23	894.3	
4	53.70	132	46.26	532.7	
5	58.86	187	7.10	57.4	
6	68.30	292	13.58	70.5	
7	71.14	326	97.96	455.1	
8	72.12	338	46.95	210.3	
9	73.37	354	73.98	316.8	
10	74.16	364	77.06	321.1	
11	75.60	382	68.97	273.9	
12	77.60	409	123.26	456.7	
13	78.95	433	69.66	243.9	
14	80.40	458	89.85	297.2	
15	82.12	488	63.24	196.3	
16	84.63	540	80.88	227.1	
17	85.79	565	116.52	312.7	
18	105.37	3,611	3.18	1.3	
19	106.67	4,635	3.47	1.1	
20	113.00	10,380	75.00	10.9	Upper Marker

**Region table for sample 11 : sample 12**

From [bp]	To [bp]	Average Size [bp]	Molarity [pmol/l]	Conc. [pg/μl]	Corr. Area	% of Total	Size distribution in CV [%]	Color
50	95	81	365.4	19.53	11.4	1	6.9	Blue
200	1,000	444	4,126.6	1,143.50	965.3	89	20.1	Grey

Assay Class: High Sensitivity DNA Assay  
Data Path: C:\...ents and Settings\Bioanalyzer\2014-02-13\2014-02-13\_004.xad

Created: 2/13/2014 5:03:45 PM  
Modified: 2/13/2014 5:50:52 PM

**Gel Image**

