

Assay Class: High Sensitivity DNA Assay  
Data Path: C:\...ents and Settings\Bioanalyzer\2012-03-01\2012-03-01\_003.xad

Created: 3/1/2012 1:21:33 PM  
Modified: 3/1/2012 2:59:56 PM

**Electrophoresis File Run Summary**

Instrument Information:

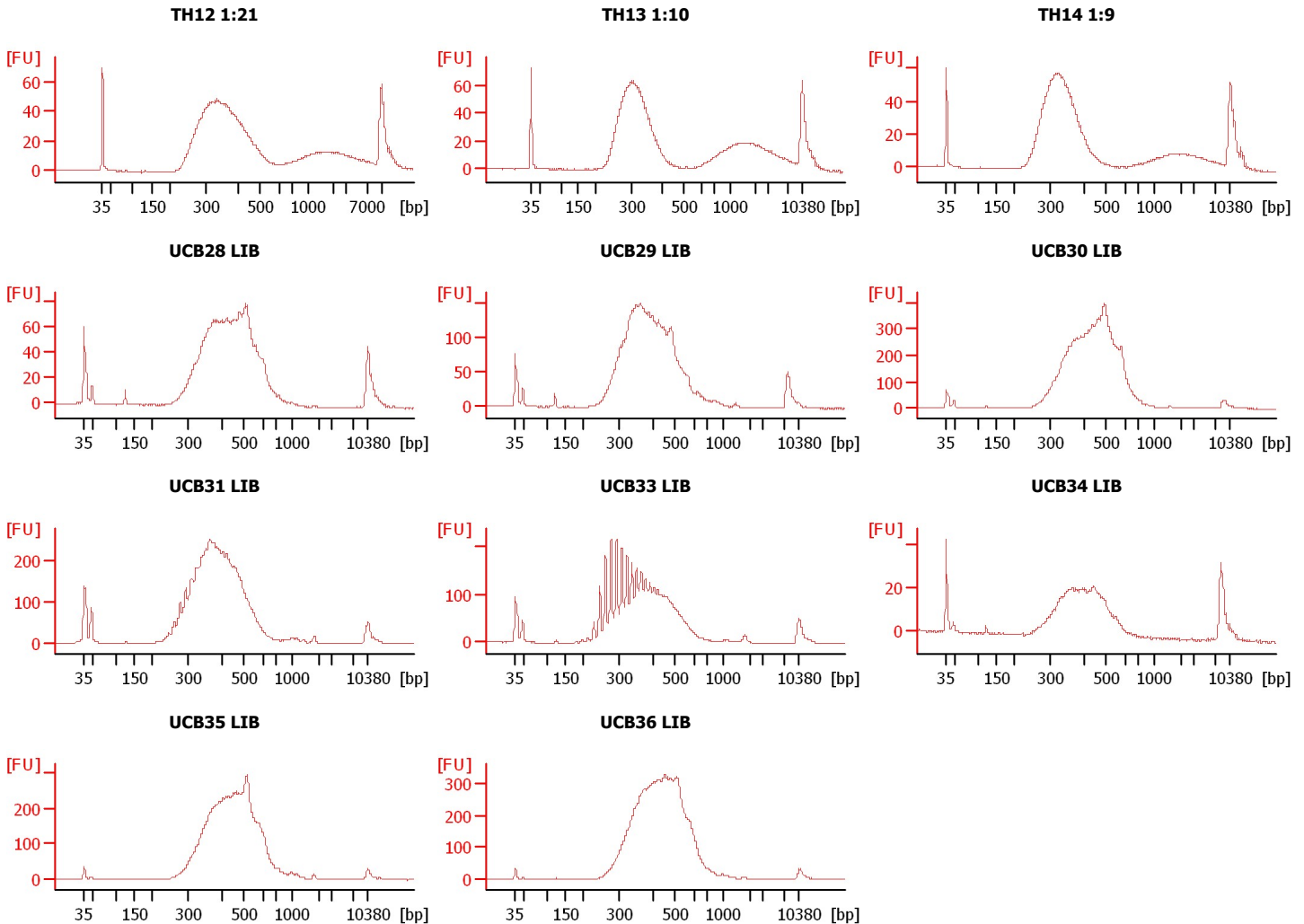
Instrument Name: DE13701086      Firmware: C.01.069  
Serial#: DE13701086      Type: G2938B

Assay Information:

Assay Origin Path: C:\Program Files\Agilent\2100 bioanalyzer\2100 expert\assays\dsDNA\High Sensitivity DNA.xsy  
Assay Class: High Sensitivity DNA Assay  
Version: 1.03  
Assay Comments: Copyright © 2003-2010 Agilent Technologies

Chip Information:

Chip Lot #:  
Reagent Kit Lot #:  
Chip Comments:



Assay Class: High Sensitivity DNA Assay  
 Data Path: C:\...ents and Settings\Bioanalyzer\2012-03-01\2012-03-01\_003.xad

Created: 3/1/2012 1:21:33 PM  
 Modified: 3/1/2012 2:59:56 PM

**Electrophoresis File Run Summary (Chip Summary)**

Sample Name	Sample Comment	Rest. Digest	Status	Observation	Result Label	Result Color
TH12 1:21		<input type="checkbox"/>	✓			
TH13 1:10		<input type="checkbox"/>	✓			
TH14 1:9		<input type="checkbox"/>	✓			
UCB28 LIB		<input type="checkbox"/>	✓			
UCB29 LIB		<input type="checkbox"/>	✓			
UCB30 LIB		<input type="checkbox"/>	✓			
UCB31 LIB		<input type="checkbox"/>	✓			
UCB33 LIB		<input type="checkbox"/>	✓			
UCB34 LIB		<input type="checkbox"/>	✓			
UCB35 LIB		<input type="checkbox"/>	✓			
UCB36 LIB		<input type="checkbox"/>	✓			
Ladder		<input type="checkbox"/>	✓			

**Chip Lot #**

**Reagent Kit Lot #**

**Chip Comments :**

Assay Class: High Sensitivity DNA Assay  
Data Path: C:\...ents and Settings\Bioanalyzer\2012-03-01\2012-03-01\_003.xad

Created: 3/1/2012 1:21:33 PM  
Modified: 3/1/2012 2:59:56 PM

**Electrophoresis Assay Details**

**General Analysis Settings**

Number of Available Sample and Ladder Wells (Max.) : 12  
Minimum Visible Range [s] : 32  
Maximum Visible Range [s] : 138  
Start Analysis Time Range [s] : 33  
End Analysis Time Range [s] : 137.5  
Ladder Concentration [pg/μl] : 1950  
Uses Standard Area for Ladder Fragments  
Lower Marker Concentration [pg/μl] : 125  
Upper Marker Concentration [pg/μl] : 75  
Used Upper Marker for Quantitation  
Standard Curve Fit is Point to Point  
Show Data Aligned to Lower and Upper Marker

**Integrator Settings**

Integration Start Time [s] : 33.05  
Integration End Time [s] : 137  
Slope Threshold : 0.8  
Height Threshold [FU] : 5  
Area Threshold : 0.1  
Width Threshold [s] : 0.6  
Baseline Plateau [s] : 0.5

**Filter Settings**

Filter Width [s] : 0.5  
Polynomial Order : 4

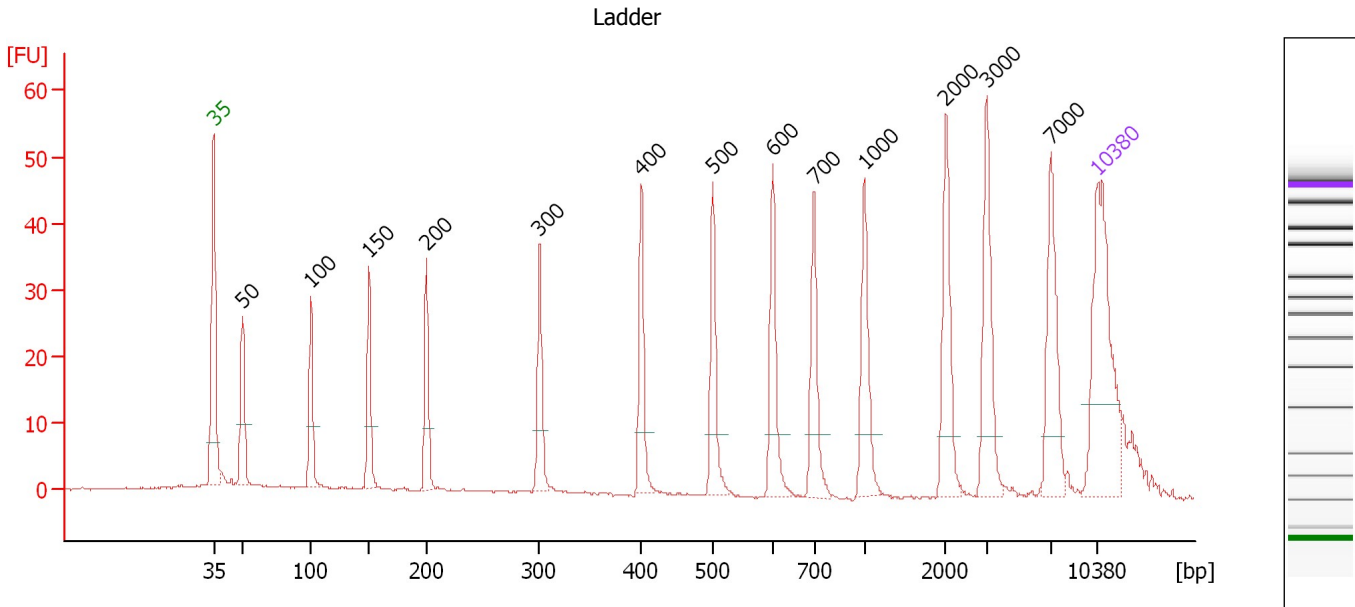
**Ladder**

Ladder Peak	Size	Area
1	35	160
2	50	210
3	100	208
4	150	221
5	200	242
6	300	270
7	400	305
8	500	306
9	600	336
10	700	321
11	1000	366
12	2000	413
13	3000	411
14	7000	400
15	10380	214

Assay Class: High Sensitivity DNA Assay  
 Data Path: C:\...ents and Settings\Bioanalyzer\2012-03-01\2012-03-01\_003.xad

Created: 3/1/2012 1:21:33 PM  
 Modified: 3/1/2012 2:59:56 PM

**Electropherogram Summary**



**Overall Results for Ladder**

Noise: 0.2

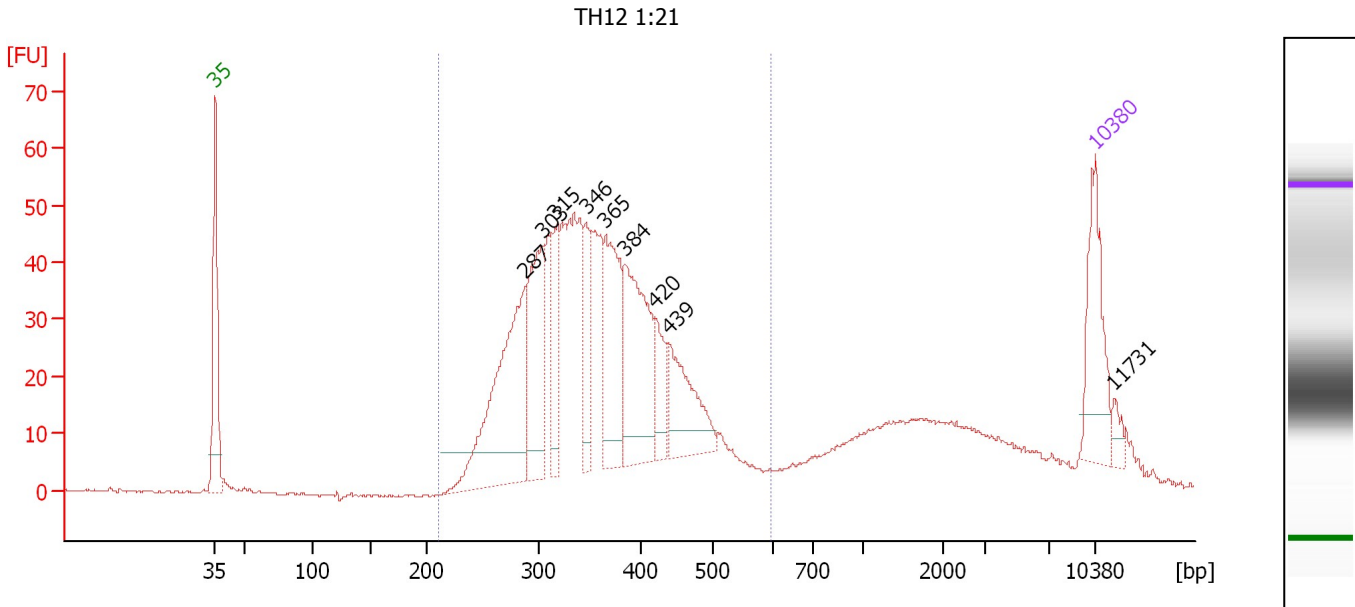
**Peak table for Ladder**

Peak	Size [bp]	Conc. [pg/μl]	Molarity [pmol/l]	Observations
1	35	125.00	5,411.3	Lower Marker
2	50	150.00	4,545.5	Ladder Peak
3	100	150.00	2,272.7	Ladder Peak
4	150	150.00	1,515.2	Ladder Peak
5	200	150.00	1,136.4	Ladder Peak
6	300	150.00	757.6	Ladder Peak
7	400	150.00	568.2	Ladder Peak
8	500	150.00	454.5	Ladder Peak
9	600	150.00	378.8	Ladder Peak
10	700	150.00	324.7	Ladder Peak
11	1,000	150.00	227.3	Ladder Peak
12	2,000	150.00	113.6	Ladder Peak
13	3,000	150.00	75.8	Ladder Peak
14	7,000	150.00	32.5	Ladder Peak
15	10,380	75.00	10.9	Upper Marker

Assay Class: High Sensitivity DNA Assay  
 Data Path: C:\...ents and Settings\Bioanalyzer\2012-03-01\2012-03-01\_003.xad

Created: 3/1/2012 1:21:33 PM  
 Modified: 3/1/2012 2:59:56 PM

**Electropherogram Summary Continued ...**



**Overall Results for sample 1 : TH12 1:21**

Number of peaks found: 9                      Corr. Area 1: 924.4  
 Noise: 0.2

**Peak table for sample 1 : TH12 1:21**

Peak	Size [bp]	Conc. [pg/μl]	Molarity [pmol/l]	Observations
1	35	125.00	5,411.3	Lower Marker
2	287	273.71	1,444.1	
3	303	149.39	748.0	
4	315	69.25	332.9	
5	346	63.59	278.7	
6	365	142.81	592.5	
7	384	171.79	677.6	
8	420	43.64	157.4	
9	439	96.60	333.5	
10	10,380	75.00	10.9	Upper Marker
11	11,731	0.00	0.0	

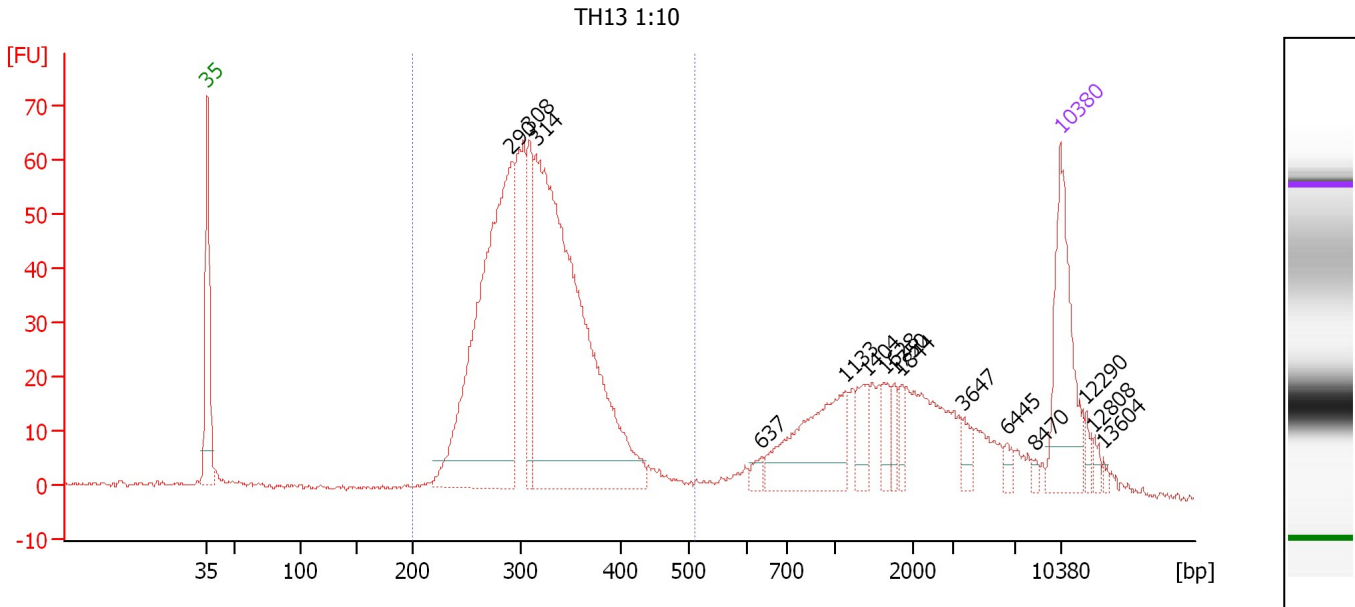
**Region table for sample 1 : TH12 1:21**

From [bp]	Molarity [pmol/l]	Average Size [bp]	Conc. [pg/μl]	To [bp]	Corr. Area	% of Total	Size distribution in CV [%]	Color
209	7,069.7	359	1,595.59	598	924.4	80	19.4	Blue

Assay Class: High Sensitivity DNA Assay  
 Data Path: C:\...ents and Settings\Bioanalyzer\2012-03-01\2012-03-01\_003.xad

Created: 3/1/2012 1:21:33 PM  
 Modified: 3/1/2012 2:59:56 PM

**Electropherogram Summary Continued ...**



**Overall Results for sample 2 : TH13 1:10**

Number of peaks found: 15      Corr. Area 1: 897.6  
 Noise: 0.4

**Peak table for sample 2 : TH13 1:10**

Peak	Size [bp]	Conc. [pg/μl]	Molarity [pmol/l]	Observations
1	35	125.00	5,411.3	Lower Marker
2	290	412.73	2,153.3	
3	308	70.81	348.6	
4	314	544.35	2,624.1	
5	637	7.78	18.5	
6	1,133	89.00	119.0	
7	1,404	21.81	23.5	
8	1,628	14.76	13.7	
9	1,750	10.26	8.9	
10	1,844	10.06	8.3	
11	3,647	10.80	4.5	
12	6,445	5.54	1.3	
13	8,470	3.02	0.5	
14	10,380	75.00	10.9	Upper Marker
15	12,290	0.00	0.0	
16	12,808	0.00	0.0	
17	13,604	0.00	0.0	

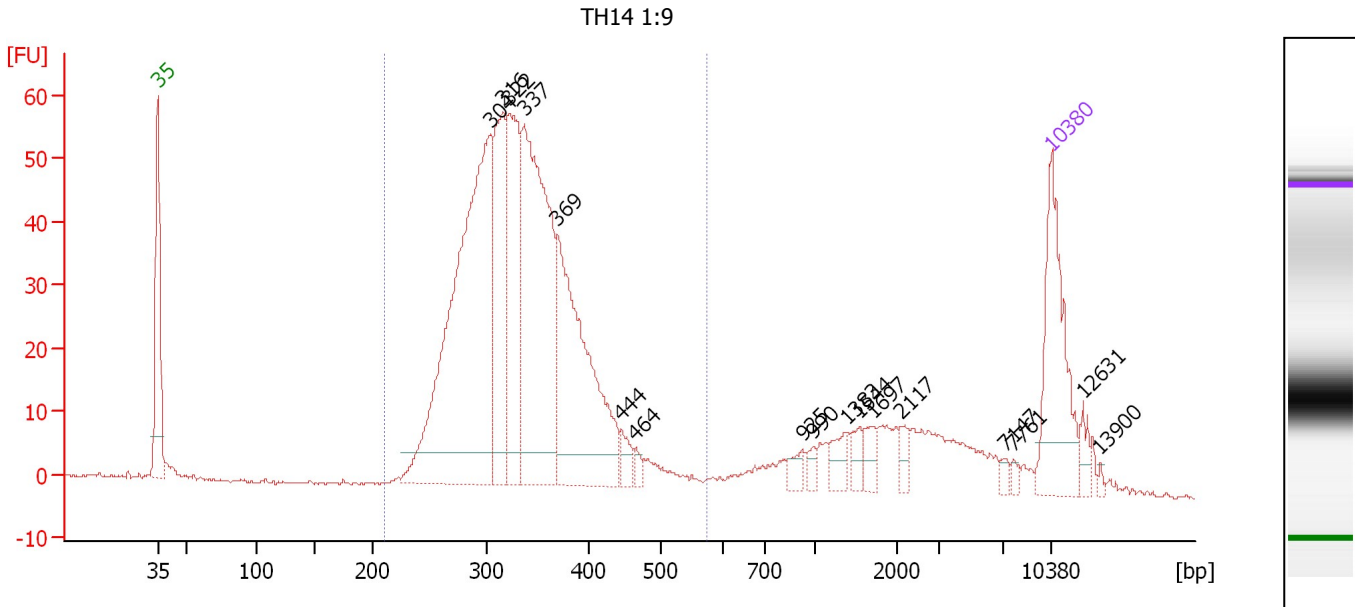
**Region table for sample 2 : TH13 1:10**

From [bp]	Molarity [pmol/l]	Average Size [bp]	Conc. [pg/μl]	To [bp]	Corr. Area	% of Total	Size distribution in CV [%]	Color
200	5,742.5	317	1,169.11	512	897.6	68	14.9	Blue

Assay Class: High Sensitivity DNA Assay  
 Data Path: C:\...ents and Settings\Bioanalyzer\2012-03-01\2012-03-01\_003.xad

Created: 3/1/2012 1:21:33 PM  
 Modified: 3/1/2012 2:59:56 PM

**Electropherogram Summary Continued ...**



**Overall Results for sample 3 : TH14 1:9**

Number of peaks found: 17      Corr. Area 1: 855.8  
 Noise: 0.3

**Peak table for sample 3 : TH14 1:9**

Peak	Size [bp]	Conc. [pg/μl]	Molarity [pmol/l]	Observations
1	35	125.00	5,411.3	Lower Marker
2	304	403.28	2,008.4	
3	316	128.59	616.6	
4	322	132.88	626.2	
5	337	266.87	1,201.3	
6	369	199.72	820.2	
7	444	12.14	41.4	
8	464	5.78	18.9	
9	925	8.98	14.7	
10	990	6.08	9.3	
11	1,383	12.14	13.3	
12	1,544	10.00	9.8	
13	1,697	10.13	9.0	
14	2,117	7.52	5.4	
15	7,147	3.99	0.8	
16	7,761	3.18	0.6	
17	10,380	75.00	10.9	Upper Marker
18	12,631	0.00	0.0	
19	13,900	0.00	0.0	

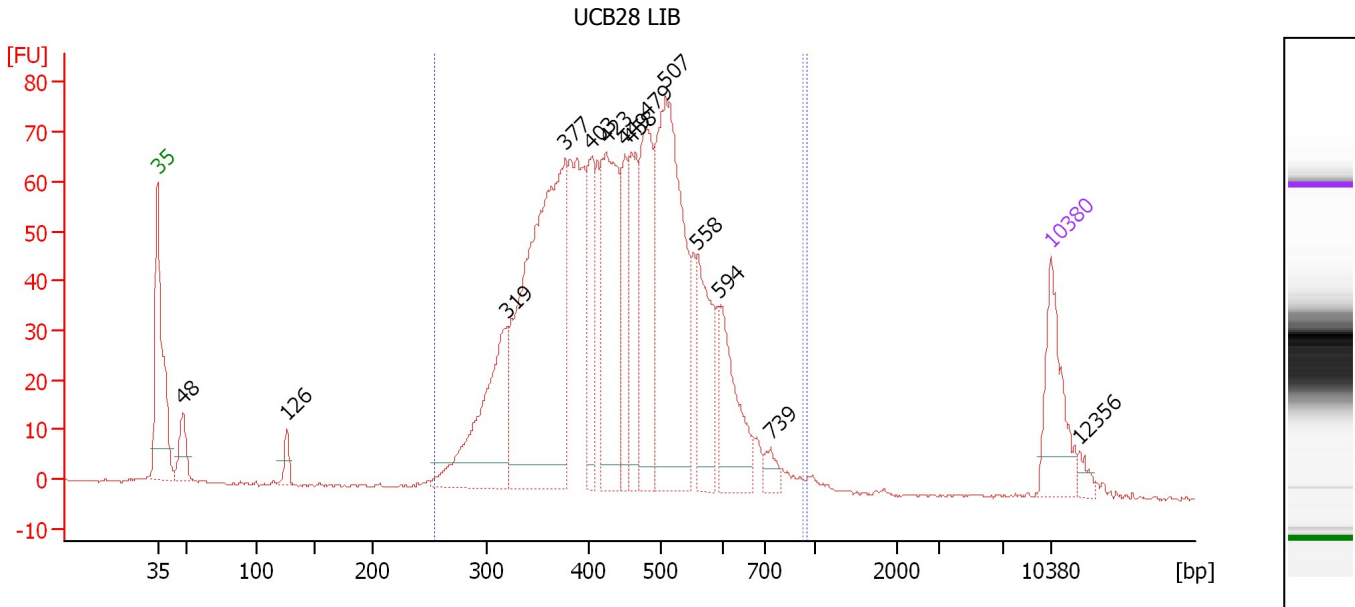
**Region table for sample 3 : TH14 1:9**

From [bp]	Molarity [pmol/l]	Average Size [bp]	Conc. [pg/μl]	To [bp]	Corr. Area	% of Total	Size distribution in CV [%]	Color
211	5,489.9	335	1,176.39	574	855.8	81	15.8	Blue

Assay Class: High Sensitivity DNA Assay  
 Data Path: C:\...ents and Settings\Bioanalyzer\2012-03-01\2012-03-01\_003.xad

Created: 3/1/2012 1:21:33 PM  
 Modified: 3/1/2012 2:59:56 PM

**Electropherogram Summary Continued ...**



**Overall Results for sample 4 : UCB28 LIB**

Number of peaks found: 14      Corr. Area 1: 1,489.1  
 Noise: 0.2      Corr. Area 2: 1,489.9

**Peak table for sample 4 : UCB28 LIB**

Peak	Size [bp]	Conc. [pg/μl]	Molarity [pmol/l]	Observations
1	35	125.00	5,411.3	Lower Marker
2	48	50.03	1,576.7	
3	126	22.05	264.2	
4	319	211.84	1,005.2	
5	377	553.04	2,225.0	
6	403	100.62	378.7	
7	423	224.81	805.2	
8	449	84.42	284.8	
9	458	117.90	389.9	
10	479	169.99	537.3	
11	507	380.27	1,137.5	
12	558	117.35	318.7	
13	594	110.92	283.1	
14	739	16.90	34.7	
15	10,380	75.00	10.9	Upper Marker
16	12,356	0.00	0.0	

**Region table for sample 4 : UCB28 LIB**

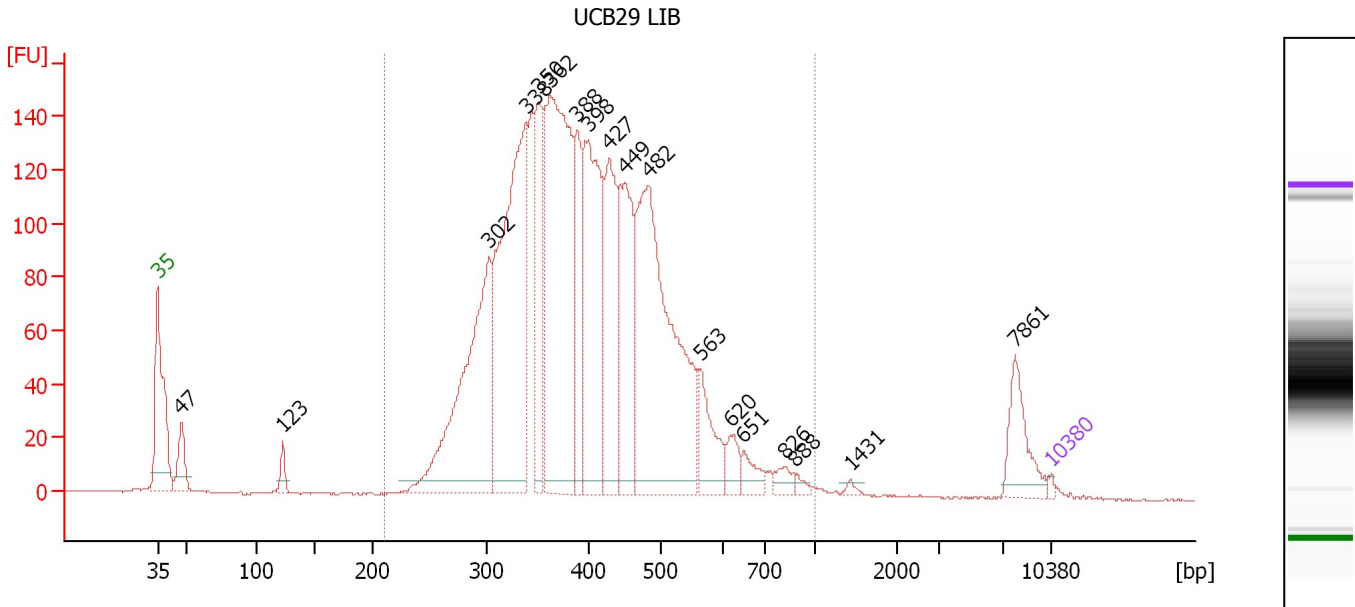
From [bp]	Molarity [pmol/l]	Average Size [bp]	Conc. [pg/μl]	To [bp]	Corr. Area	% of Total	Size distribution in CV [%]	Color
255	8,924.4	448	2,472.57	933	1,489.0	96	22.0	Blue
255	8,926.2	448	2,473.73	959	1,489.9	97	22.1	Blue



Assay Class: High Sensitivity DNA Assay  
 Data Path: C:\...ents and Settings\Bioanalyzer\2012-03-01\2012-03-01\_003.xad

Created: 3/1/2012 1:21:33 PM  
 Modified: 3/1/2012 2:59:56 PM

**Electropherogram Summary Continued ...**



**Overall Results for sample 5 : UCB29 LIB**

Number of peaks found: 18      Corr. Area 1: 3,004.7  
 Noise: 0.2

**Peak table for sample 5 : UCB29 LIB**

Peak	Size [bp]	Conc. [pg/μl]	Molarity [pmol/l]	Observations
1	35	125.00	5,411.3	Lower Marker
2	47	1,419.00	45,506.6	
3	123	539.26	6,640.1	
4	302	9,781.16	49,054.7	
5	338	12,291.40	55,076.0	
6	350	3,797.82	16,442.6	
7	362	12,337.06	51,667.8	
8	388	2,981.12	11,634.1	
9	398	7,080.93	26,931.2	
10	427	4,563.99	16,180.6	
11	449	4,885.49	16,484.7	
12	482	12,046.50	37,872.9	
13	563	1,757.38	4,727.3	
14	620	682.64	1,668.0	
15	651	606.79	1,412.6	
16	826	389.56	714.4	
17	888	161.40	275.4	
18	1,431	112.55	119.2	
19	7,861	1,459.80	281.4	
20	10,380	75.00	10.9	Upper Marker

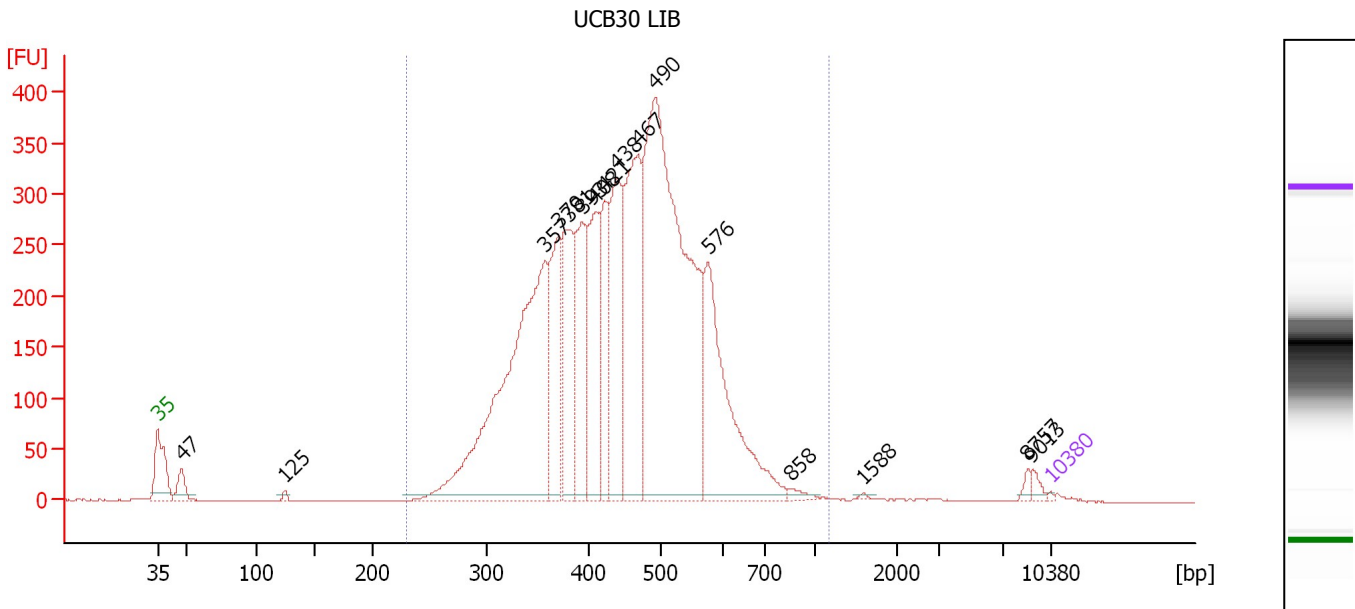
**Region table for sample 5 : UCB29 LIB**

From [bp]	Molarity [pmol/l]	Average Size [bp]	Conc. [pg/μl]	To [bp]	Corr. Area	% of Total	Size distribution in CV [%]	Color
211	312,126.8	408	78,421.64	1,000	3,004.7	95	24.5	Blue

Assay Class: High Sensitivity DNA Assay  
 Data Path: C:\...ents and Settings\Bioanalyzer\2012-03-01\2012-03-01\_003.xad

Created: 3/1/2012 1:21:33 PM  
 Modified: 3/1/2012 2:59:56 PM

**Electropherogram Summary Continued ...**



**Overall Results for sample 6 : UCB30 LIB**

Number of peaks found: 16      Corr. Area 1: 6,617.5  
 Noise: 0.3

**Peak table for sample 6 : UCB30 LIB**

Peak	Size [bp]	Conc. [pg/μl]	Molarity [pmol/l]	Observations
1	35	125.00	5,411.3	Lower Marker
2	47	1,817.65	58,156.1	
3	125	282.68	3,421.9	
4	357	34,597.41	146,682.9	
5	370	9,323.92	38,223.0	
6	381	9,226.32	36,723.8	
7	393	9,135.95	35,232.5	
8	408	9,696.32	35,998.0	
9	421	6,841.35	24,647.1	
10	438	10,943.18	37,855.9	
11	467	15,815.59	51,308.7	
12	490	44,976.18	138,995.6	
13	576	14,694.24	38,649.6	
14	858	452.81	800.0	
15	1,588	105.08	100.3	
16	8,757	318.81	55.2	
17	9,013	421.93	70.9	
18	10,380	75.00	10.9	Upper Marker

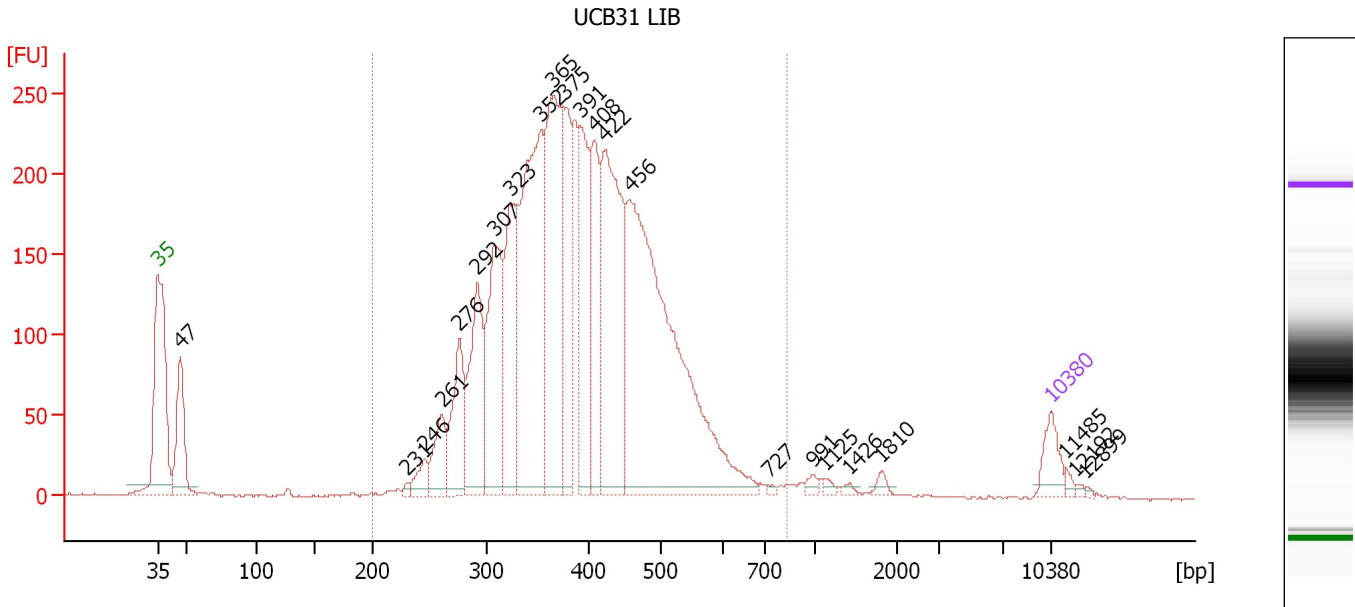
**Region table for sample 6 : UCB30 LIB**

From [bp]	Molarity [pmol/l]	Average Size [bp]	Conc. [pg/μl]	To [bp]	Corr. Area	% of Total	Size distribution in CV [%]	Color
230	605,041.4	451	168,903.38	1,174	6,617.5	98	22.0	Blue

Assay Class: High Sensitivity DNA Assay  
 Data Path: C:\...ents and Settings\Bioanalyzer\2012-03-01\2012-03-01\_003.xad

Created: 3/1/2012 1:21:33 PM  
 Modified: 3/1/2012 2:59:56 PM

**Electropherogram Summary Continued ...**



**Overall Results for sample 7 : UCB31 LIB**

Number of peaks found: 23                      Corr. Area 1: 4,667.8  
 Noise: 0.5

**Peak table for sample 7 : UCB31 LIB**

Peak	Size [bp]	Conc. [pg/μl]	Molarity [pmol/l]	Observations
1	35	125.00	5,411.3	Lower Marker
2	47	329.03	10,646.6	
3	231	13.64	89.7	
4	246	71.85	443.0	
5	261	165.56	961.5	
6	276	297.59	1,633.1	
7	292	422.73	2,194.7	
8	307	563.05	2,776.9	
9	323	502.72	2,359.1	
10	352	1,052.77	4,526.5	
11	365	829.66	3,443.6	
12	375	372.71	1,504.8	
13	391	433.34	1,679.5	
14	408	385.34	1,432.1	
15	422	829.14	2,974.9	
16	456	1,742.15	5,791.4	
17	727	8.67	18.1	
18	991	17.69	27.0	
19	1,125	13.78	18.6	
20	1,426	10.69	11.4	
21	1,810	17.66	14.8	
22	10,380	75.00	10.9	Upper Marker
23	11,485	0.00	0.0	
24	12,192	0.00	0.0	
25	12,899	0.00	0.0	


Assay Class: High Sensitivity DNA Assay  
Data Path: C:\...ents and Settings\Bioanalyzer\2012-03-01\2012-03-01\_003.xad

Created: 3/1/2012 1:21:33 PM  
Modified: 3/1/2012 2:59:56 PM

**Electropherogram Summary Continued ...**

... Region table for sample 7 :

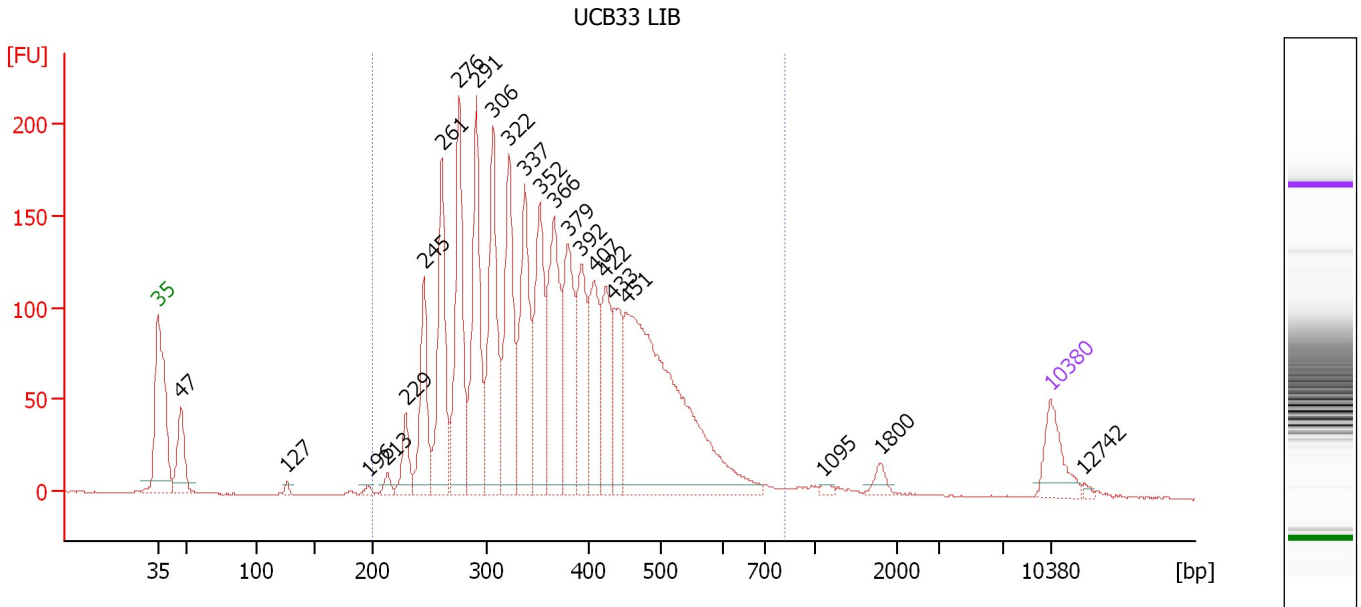
**UCB31 LIB**

<b>From [bp]</b>	<b>Molarity [pmol/l]</b>	<b>Average Size [bp]</b>	<b>Conc. [pg/μl]</b>	<b>To [bp]</b>	<b>Corr. Area</b>	<b>% of Total</b>	<b>Size distribution in CV [%]</b>	<b>Co lor</b>
200	32,375.2	398	7,995.97	829	4,667.8	94	21.3	

Assay Class: High Sensitivity DNA Assay  
 Data Path: C:\...ents and Settings\Bioanalyzer\2012-03-01\2012-03-01\_003.xad

Created: 3/1/2012 1:21:33 PM  
 Modified: 3/1/2012 2:59:56 PM

**Electropherogram Summary Continued ...**



**Overall Results for sample 8 : UCB33 LIB**

Number of peaks found: 23      Corr. Area 1: 3,231.6  
 Noise: 0.4

**Peak table for sample 8 : UCB33 LIB**

Peak	Size [bp]	Conc. [pg/μl]	Molarity [pmol/l]	Observations
1	35	125.00	5,411.3	Lower Marker
2	47	146.05	4,715.8	
3	127	10.21	122.1	
4	196	9.40	72.6	
5	213	21.00	149.3	
6	229	78.57	519.7	
7	245	200.25	1,238.7	
8	261	308.70	1,793.4	
9	276	371.10	2,036.2	
10	291	367.47	1,913.9	
11	306	357.90	1,770.3	
12	322	326.69	1,536.7	
13	337	313.71	1,409.2	
14	352	277.41	1,194.5	
15	366	310.59	1,286.3	
16	379	262.35	1,048.2	
17	392	200.31	774.3	
18	407	196.85	733.3	
19	422	179.10	642.6	
20	433	149.08	522.0	
21	451	900.66	3,026.6	
22	1,095	7.43	10.3	
23	1,800	19.94	16.8	
24	10,380	75.00	10.9	Upper Marker
25	12,742	0.00	0.0	


Assay Class: High Sensitivity DNA Assay  
Data Path: C:\...ents and Settings\Bioanalyzer\2012-03-01\2012-03-01\_003.xad

Created: 3/1/2012 1:21:33 PM  
Modified: 3/1/2012 2:59:56 PM

**Electropherogram Summary Continued ...**

... Region table for sample 8 :

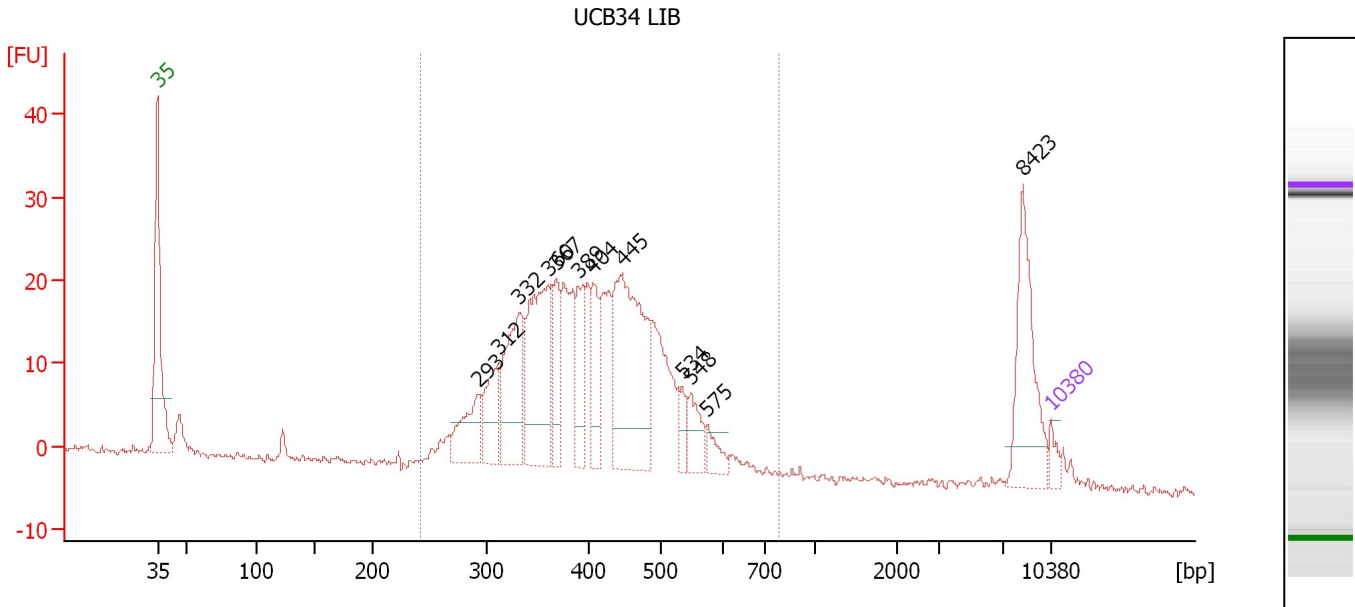
**UCB33 LIB**

<b>From [bp]</b>	<b>Molarity [pmol/l]</b>	<b>Average Size [bp]</b>	<b>Conc. [pg/μl]</b>	<b>To [bp]</b>	<b>Corr. Area</b>	<b>% of Total</b>	<b>Size distribution in CV [%]</b>	<b>Co lor</b>
200	21,023.6	377	4,804.84	827	3,231.6	95	25.1	

Assay Class: High Sensitivity DNA Assay  
 Data Path: C:\...ents and Settings\Bioanalyzer\2012-03-01\2012-03-01\_003.xad

Created: 3/1/2012 1:21:33 PM  
 Modified: 3/1/2012 2:59:56 PM

**Electropherogram Summary Continued ...**



**Overall Results for sample 9 : UCB34 LIB**

Number of peaks found: 12      Corr. Area 1: 444.9  
 Noise: 0.5

**Peak table for sample 9 : UCB34 LIB**

Peak	Size [bp]	Conc. [pg/μl]	Molarity [pmol/l]	Observations
1	35	125.00	5,411.3	Lower Marker
2	293	499.53	2,580.4	
3	312	483.12	2,349.5	
4	332	935.58	4,273.3	
5	367	1,306.42	5,495.7	
6	367	419.48	1,730.4	
7	389	421.39	1,642.8	
8	404	409.31	1,534.7	
9	445	1,701.35	5,797.3	
10	534	150.81	428.2	
11	548	256.23	708.9	
12	575	142.98	377.0	
13	8,423	755.70	135.9	
14	10,380	75.00	10.9	Upper Marker

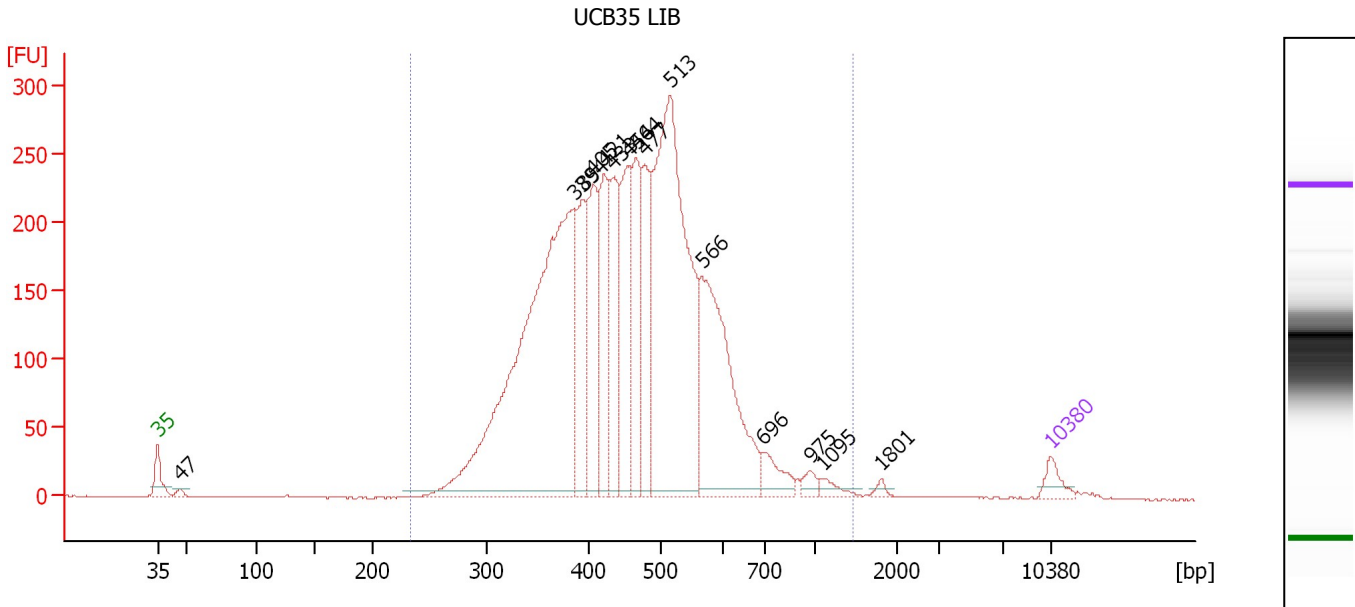
**Region table for sample 9 : UCB34 LIB**

From [bp]	Molarity [pmol/l]	Average Size [bp]	Conc. [pg/μl]	To [bp]	Corr. Area	% of Total	Size distribution in CV [%]	Color
243	38,208.7	410	9,799.27	791	444.9	86	19.8	Blue

Assay Class: High Sensitivity DNA Assay  
 Data Path: C:\...ents and Settings\Bioanalyzer\2012-03-01\2012-03-01\_003.xad

Created: 3/1/2012 1:21:33 PM  
 Modified: 3/1/2012 2:59:56 PM

**Electropherogram Summary Continued ...**



**Overall Results for sample 10 : UCB35 LIB**

Number of peaks found: 15      Corr. Area 1: 4,881.5  
 Noise: 0.2

**Peak table for sample 10 : UCB35 LIB**

Peak	Size [bp]	Conc. [pg/μl]	Molarity [pmol/l]	Observations
1	35	125.00	5,411.3	Lower Marker
2	47	36.11	1,175.7	
3	385	3,859.76	15,191.8	
4	394	716.24	2,752.5	
5	405	734.49	2,747.1	
6	421	707.95	2,547.7	
7	433	662.46	2,315.8	
8	454	793.04	2,647.9	
9	464	637.84	2,081.0	
10	477	664.89	2,112.9	
11	513	2,852.24	8,417.4	
12	566	1,436.83	3,847.1	
13	696	173.45	377.5	
14	975	56.92	88.5	
15	1,095	52.77	73.0	
16	1,801	21.97	18.5	
17	10,380	75.00	10.9	Upper Marker

**Region table for sample 10 : UCB35 LIB**

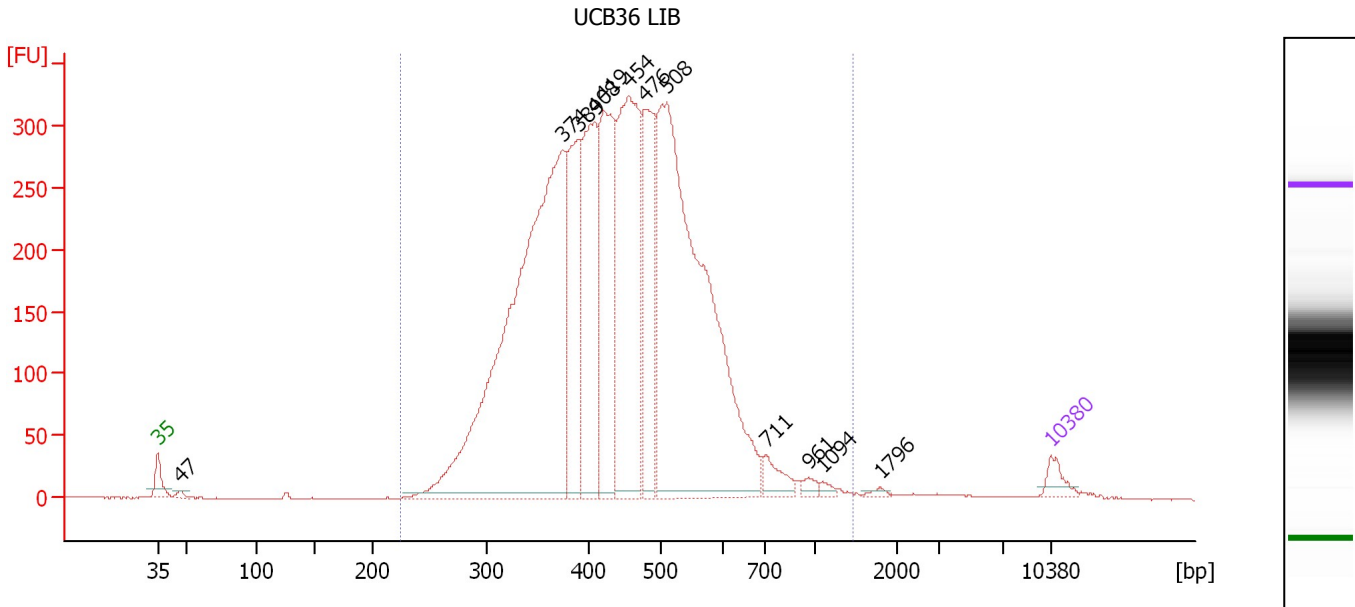
From [bp]	Molarity [pmol/l]	Average Size [bp]	Conc. [pg/μl]	To [bp]	Corr. Area	% of Total	Size distribution in CV [%]	Color
233	48,378.2	466	13,795.89	1,473	4,881.5	99	26.6	Blue



Assay Class: High Sensitivity DNA Assay  
 Data Path: C:\...ents and Settings\Bioanalyzer\2012-03-01\2012-03-01\_003.xad

Created: 3/1/2012 1:21:33 PM  
 Modified: 3/1/2012 2:59:56 PM

**Electropherogram Summary Continued ...**



**Overall Results for sample 11 : UCB36 LIB**

Number of peaks found: 12      Corr. Area 1: 6,401.7  
 Noise: 0.4

**Peak table for sample 11 : UCB36 LIB**

Peak	Size [bp]	Conc. [pg/μl]	Molarity [pmol/l]	Observations
1	35	125.00	5,411.3	Lower Marker
2	47	29.83	967.2	
3	374	4,720.67	19,139.6	
4	389	982.00	3,820.0	
5	408	1,235.64	4,593.8	
6	419	1,264.70	4,570.6	
7	454	1,939.91	6,468.9	
8	476	990.10	3,151.7	
9	508	4,011.06	11,967.4	
10	711	152.10	324.1	
11	961	44.64	70.4	
12	1,094	29.75	41.2	
13	1,796	20.68	17.4	
14	10,380	75.00	10.9	Upper Marker

**Region table for sample 11 : UCB36 LIB**

From [bp]	Molarity [pmol/l]	Average Size [bp]	Conc. [pg/μl]	To [bp]	Corr. Area	% of Total	Size distribution in CV [%]	Color
224	57,248.8	450	15,798.36	1,475	6,401.7	99	25.9	Blue

Assay Class: High Sensitivity DNA Assay  
Data Path: C:\...ents and Settings\Bioanalyzer\2012-03-01\2012-03-01\_003.xad

Created: 3/1/2012 1:21:33 PM  
Modified: 3/1/2012 2:59:56 PM

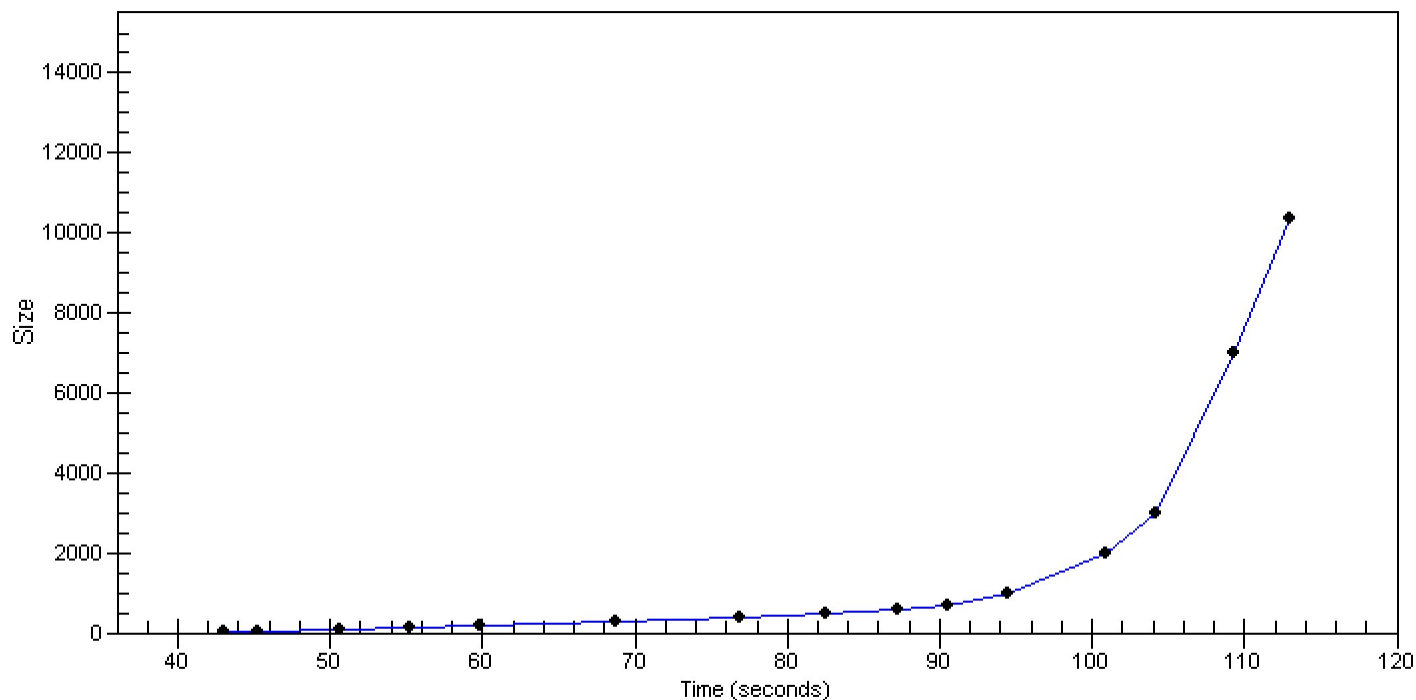
**Gel Image**

Assay Class: High Sensitivity DNA Assay  
Data Path: C:\...ents and Settings\Bioanalyzer\2012-03-01\2012-03-01\_003.xad

Created: 3/1/2012 1:21:33 PM  
Modified: 3/1/2012 2:59:56 PM

**Curves**

**Standard Curve**



Assay Class: High Sensitivity DNA Assay  
 Data Path: C:\...ents and Settings\Bioanalyzer\2012-03-01\2012-03-01\_003.xad

Created: 3/1/2012 1:21:33 PM  
 Modified: 3/1/2012 2:59:56 PM

**Run Logbook**

Description	Number	Source	Category	Sub Category	Time	Time Zone	User	Host
Run ended on port 1 (Number of wells acquired: 12)		Instrument	Run		3/1/2012 2:02:51 PM	(GMT --08:00) Pacific Standard Time	UC Davis	D8XSMGH1
Run started on port 1 (File: C:\Documents and Settings\Bioanalyzer\2012-03-01\2012-03-01_003.xad)		Instrument	Run		3/1/2012 1:21:39 PM	(GMT --08:00) Pacific Standard Time	UC Davis	D8XSMGH1
Product Number : G2938B		Instrument	Run		3/1/2012 1:21:39 PM	(GMT --08:00) Pacific Standard Time	UC Davis	D8XSMGH1
Name :		Instrument	Run		3/1/2012 1:21:39 PM	(GMT --08:00) Pacific Standard Time	UC Davis	D8XSMGH1
Vendor : Agilent Technologies		Instrument	Run		3/1/2012 1:21:39 PM	(GMT --08:00) Pacific Standard Time	UC Davis	D8XSMGH1
Serial# : DE13701086		Instrument	Run		3/1/2012 1:21:39 PM	(GMT --08:00) Pacific Standard Time	UC Davis	D8XSMGH1
Firmware : C.01.069		Instrument	Run		3/1/2012 1:21:39 PM	(GMT --08:00) Pacific Standard Time	UC Davis	D8XSMGH1
Cartridge : Electrode		Instrument	Run		3/1/2012 1:21:39 PM	(GMT --08:00) Pacific Standard Time	UC Davis	D8XSMGH1