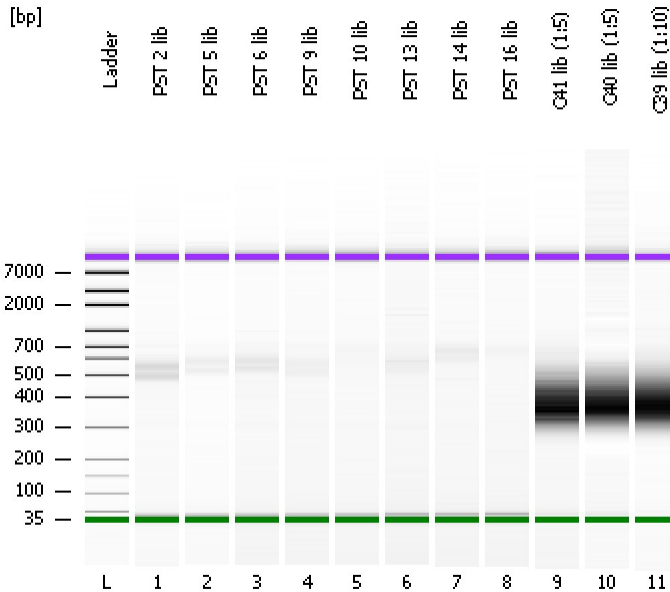


Assay Class: High Sensitivity DNA Assay
Data Path: C:\...ents and Settings\Bioanalyzer\2012-03-01\2012-03-01_005.xad

Created: 3/1/2012 3:01:19 PM
Modified: 3/1/2012 3:53:57 PM

Electrophoresis File Run Summary



Instrument Information:

Instrument Name: DE13701086 Firmware: C.01.069
Serial#: DE13701086 Type: G2938B

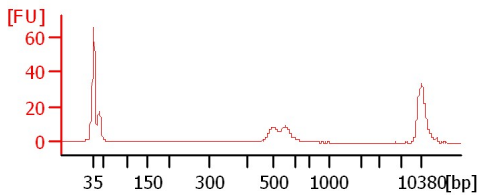
Assay Information:

Assay Origin Path: C:\Program Files\Agilent\2100 bioanalyzer\2100 expert\assays\dsDNA\High Sensitivity DNA.xsy
Assay Class: High Sensitivity DNA Assay
Version: 1.03
Assay Comments: Copyright © 2003-2010 Agilent Technologies

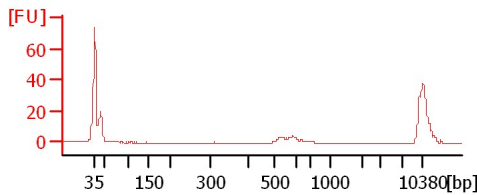
Chip Information:

Chip Lot #:
Reagent Kit Lot #:
Chip Comments:

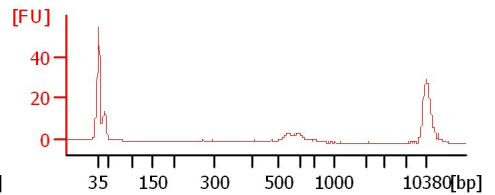
PST 2 lib



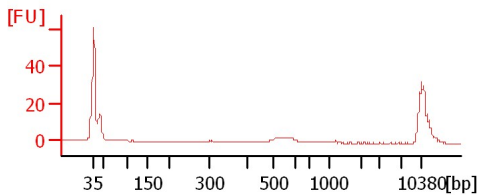
PST 5 lib



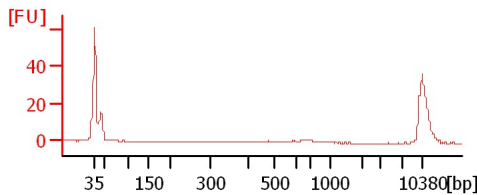
PST 6 lib



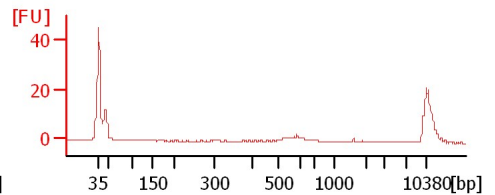
PST 9 lib



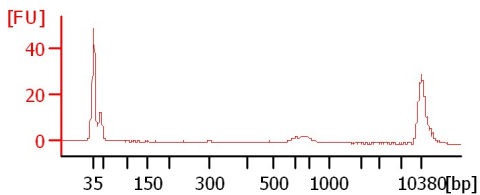
PST 10 lib



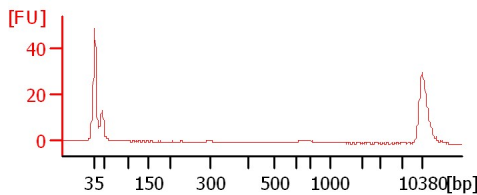
PST 13 lib



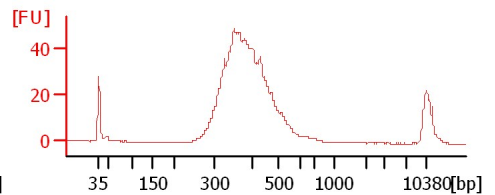
PST 14 lib



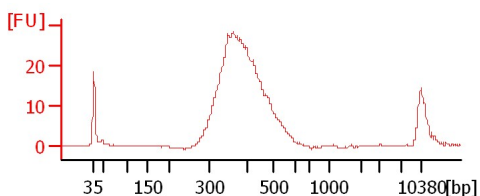
PST 16 lib



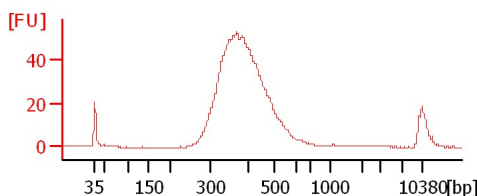
C41 lib (1:5)



C40 lib (1:5)



C39 lib (1:10)



Assay Class: High Sensitivity DNA Assay
 Data Path: C:\...ents and Settings\Bioanalyzer\2012-03-01\2012-03-01_005.xad

Created: 3/1/2012 3:01:19 PM
 Modified: 3/1/2012 3:53:57 PM

Electrophoresis File Run Summary (Chip Summary)

Sample Name	Sample Comment	Rest. Digest	Status	Observation	Result Label	Result Color
PST 2 lib		<input type="checkbox"/>	✓			
PST 5 lib		<input type="checkbox"/>	✓			
PST 6 lib		<input type="checkbox"/>	✓			
PST 9 lib		<input type="checkbox"/>	✓			
PST 10 lib		<input type="checkbox"/>	✓			
PST 13 lib		<input type="checkbox"/>	✓			
PST 14 lib		<input type="checkbox"/>	✓			
PST 16 lib		<input type="checkbox"/>	✓			
C41 lib (1:5)		<input type="checkbox"/>	✓			
C40 lib (1:5)		<input type="checkbox"/>	✓			
C39 lib (1:10)		<input type="checkbox"/>	✓			
Ladder		<input type="checkbox"/>	✓			

Chip Lot #

Reagent Kit Lot #

Chip Comments :

Assay Class: High Sensitivity DNA Assay
Data Path: C:\...ents and Settings\Bioanalyzer\2012-03-01\2012-03-01_005.xad

Created: 3/1/2012 3:01:19 PM
Modified: 3/1/2012 3:53:57 PM

Electrophoresis Assay Details

General Analysis Settings

Number of Available Sample and Ladder Wells (Max.) : 12
Minimum Visible Range [s] : 32
Maximum Visible Range [s] : 138
Start Analysis Time Range [s] : 33
End Analysis Time Range [s] : 137.5
Ladder Concentration [pg/μl] : 1950
Uses Standard Area for Ladder Fragments
Lower Marker Concentration [pg/μl] : 125
Upper Marker Concentration [pg/μl] : 75
Used Upper Marker for Quantitation
Standard Curve Fit is Point to Point
Show Data Aligned to Lower and Upper Marker

Integrator Settings

Integration Start Time [s] : 33.05
Integration End Time [s] : 137
Slope Threshold : 0.8
Height Threshold [FU] : 5
Area Threshold : 0.1
Width Threshold [s] : 0.6
Baseline Plateau [s] : 0.5

Filter Settings

Filter Width [s] : 0.5
Polynomial Order : 4

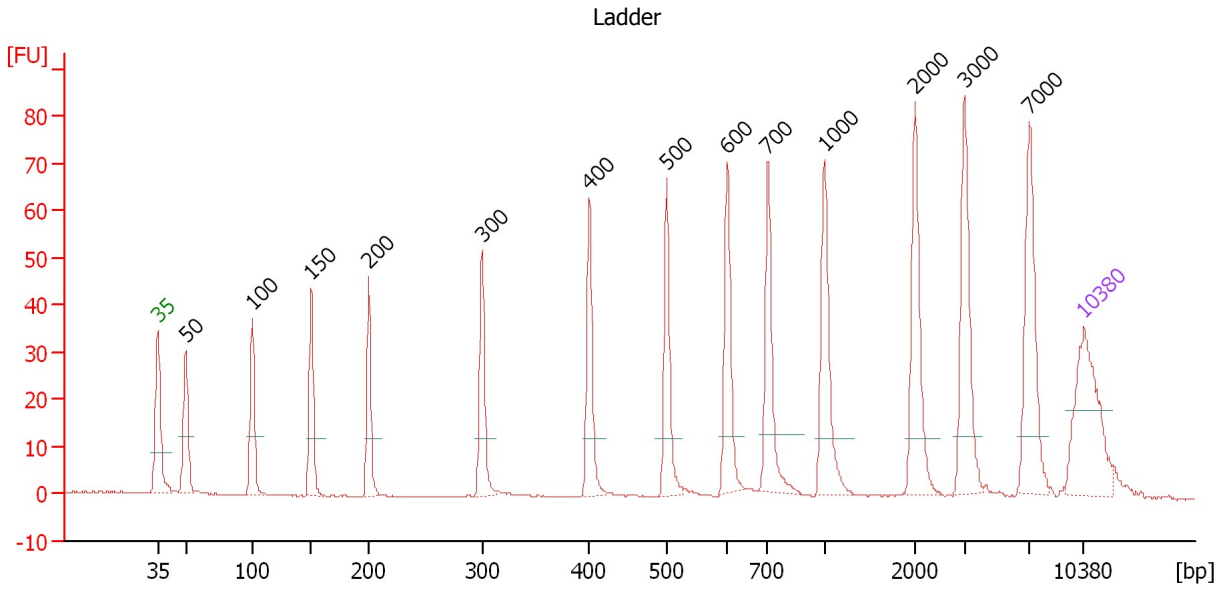
Ladder

Ladder Peak	Size	Area
1	35	160
2	50	210
3	100	208
4	150	221
5	200	242
6	300	270
7	400	305
8	500	306
9	600	336
10	700	321
11	1000	366
12	2000	413
13	3000	411
14	7000	400
15	10380	214

Assay Class: High Sensitivity DNA Assay
 Data Path: C:\...ents and Settings\Bioanalyzer\2012-03-01\2012-03-01_005.xad

Created: 3/1/2012 3:01:19 PM
 Modified: 3/1/2012 3:53:57 PM

Electropherogram Summary



Overall Results for Ladder

Noise: 0.1

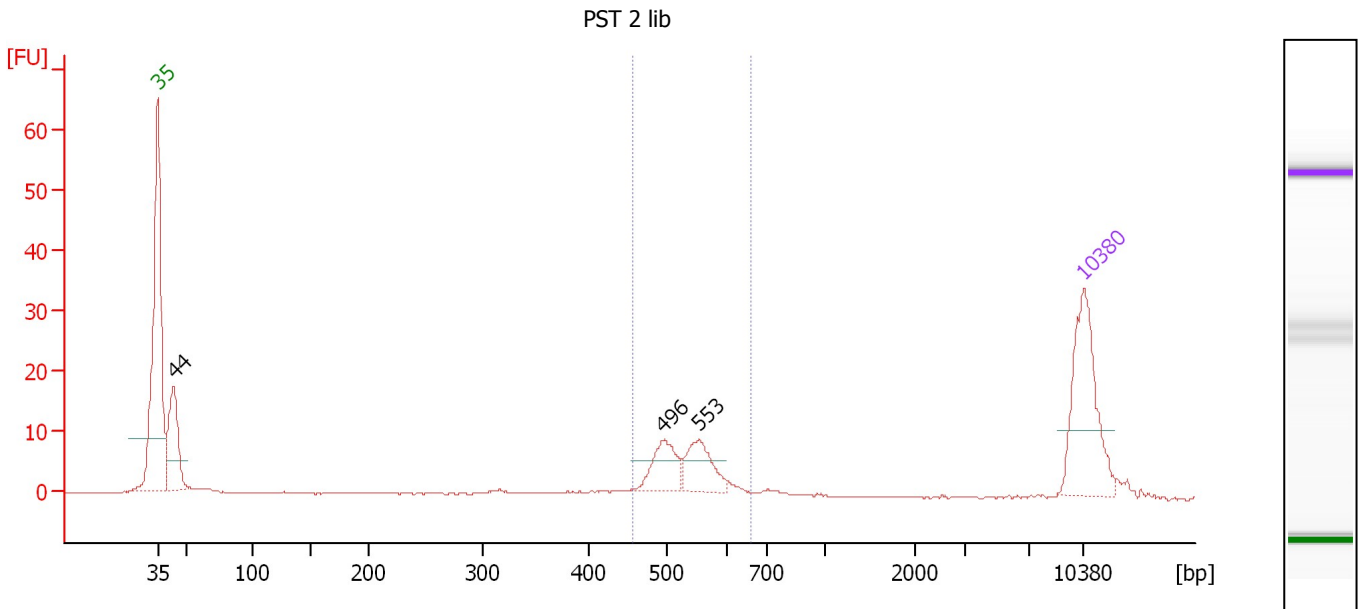
Peak table for Ladder

Peak	Size [bp]	Conc. [pg/µl]	Molarity [pmol/l]	Observations
1	35	125.00	5,411.3	Lower Marker
2	50	150.00	4,545.5	Ladder Peak
3	100	150.00	2,272.7	Ladder Peak
4	150	150.00	1,515.2	Ladder Peak
5	200	150.00	1,136.4	Ladder Peak
6	300	150.00	757.6	Ladder Peak
7	400	150.00	568.2	Ladder Peak
8	500	150.00	454.5	Ladder Peak
9	600	150.00	378.8	Ladder Peak
10	700	150.00	324.7	Ladder Peak
11	1,000	150.00	227.3	Ladder Peak
12	2,000	150.00	113.6	Ladder Peak
13	3,000	150.00	75.8	Ladder Peak
14	7,000	150.00	32.5	Ladder Peak
15	10,380	75.00	10.9	Upper Marker

Assay Class: High Sensitivity DNA Assay
 Data Path: C:\...ents and Settings\Bioanalyzer\2012-03-01\2012-03-01_005.xad

Created: 3/1/2012 3:01:19 PM
 Modified: 3/1/2012 3:53:57 PM

Electropherogram Summary Continued ...



Overall Results for sample 1 : PST 2 lib

Number of peaks found: 3 Corr. Area 1: 57.3
 Noise: 0.1

Peak table for sample 1 : PST 2 lib

Peak	Size [bp]	Conc. [pg/μl]	Molarity [pmol/l]	Observations
1	35	125.00	5,411.3	Lower Marker
2	44	84.77	2,939.3	
3	496	37.88	115.6	
4	553	37.87	103.7	
5	10,380	75.00	10.9	Upper Marker

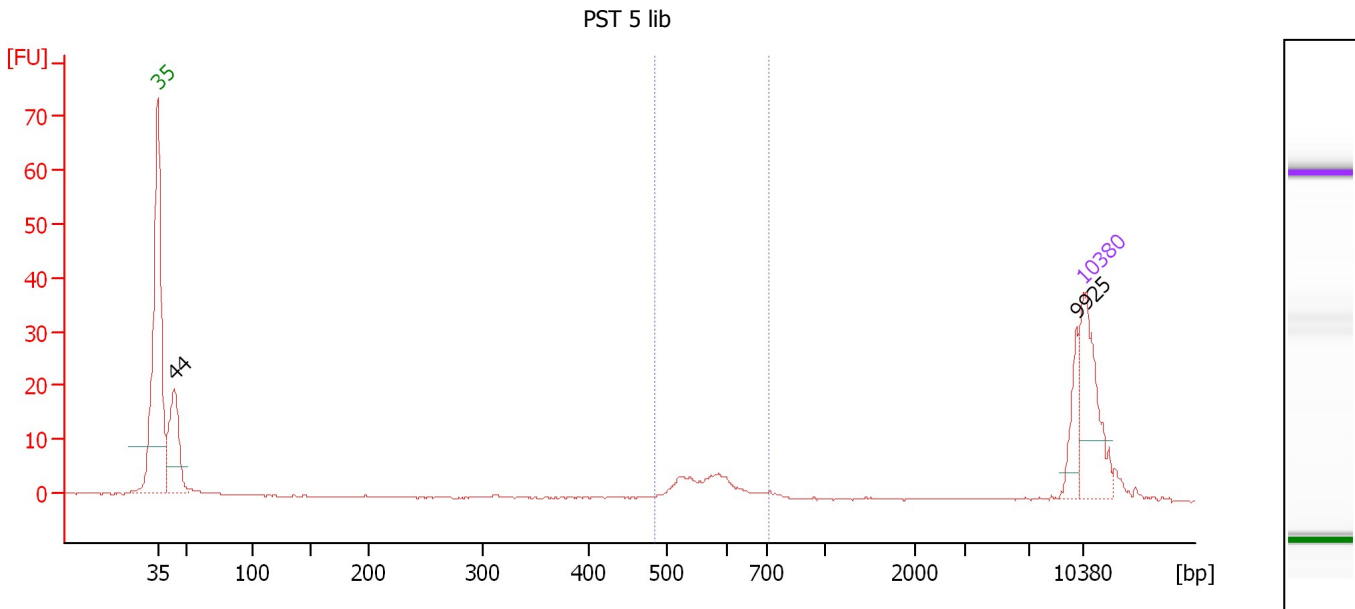
Region table for sample 1 : PST 2 lib

From [bp]	Molarity [pmol/l]	Average Size [bp]	Conc. [pg/μl]	To [bp]	Corr. Area	% of Total	Size distribution in CV [%]	Color
457	275.7	533	96.33	658	57.3	41	7.8	Blue

Assay Class: High Sensitivity DNA Assay
 Data Path: C:\...ents and Settings\Bioanalyzer\2012-03-01\2012-03-01_005.xad

Created: 3/1/2012 3:01:19 PM
 Modified: 3/1/2012 3:53:57 PM

Electropherogram Summary Continued ...



Overall Results for sample 2 : PST 5 lib

Number of peaks found: 2 Corr. Area 1: 23.6
 Noise: 0.1

Peak table for sample 2 : PST 5 lib

Peak	Size [bp]	Conc. [pg/μl]	Molarity [pmol/l]	Observations
1	35	125.00	5,411.3	Lower Marker
2	44	117.99	4,076.8	
3	9,925	29.37	4.5	
4	10,380	75.00	10.9	Upper Marker

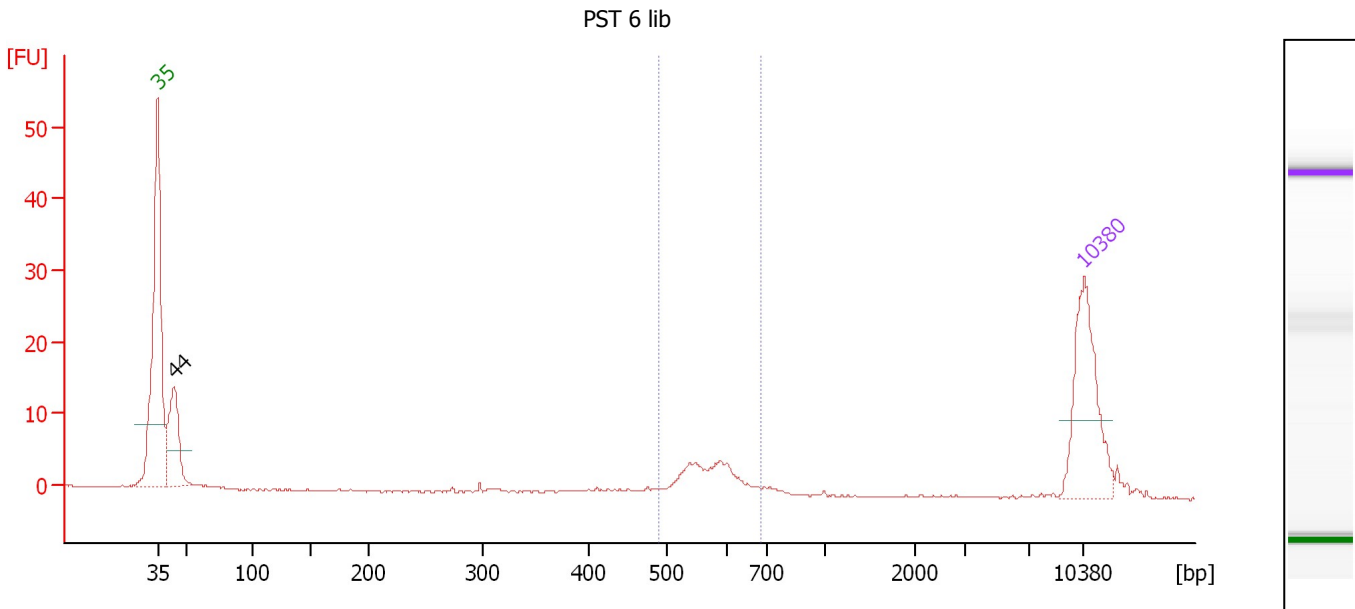
Region table for sample 2 : PST 5 lib

From [bp]	Molarity [pmol/l]	Average Size [bp]	Conc. [pg/μl]	To [bp]	Corr. Area	% of Total	Size distribution in CV [%]	Color
484	125.5	572	47.13	705	23.6	25	8.0	Blue

Assay Class: High Sensitivity DNA Assay
 Data Path: C:\...ents and Settings\Bioanalyzer\2012-03-01\2012-03-01_005.xad

Created: 3/1/2012 3:01:19 PM
 Modified: 3/1/2012 3:53:57 PM

Electropherogram Summary Continued ...



Overall Results for sample 3 : PST 6 lib

Number of peaks found: 1 Corr. Area 1: 23.0
 Noise: 0.1

Peak table for sample 3 : PST 6 lib

Peak	Size [bp]	Conc. [pg/μl]	Molarity [pmol/l]	Observations
1	35	125.00	5,411.3	Lower Marker
2	44	83.06	2,884.1	
3	10,380	75.00	10.9	Upper Marker

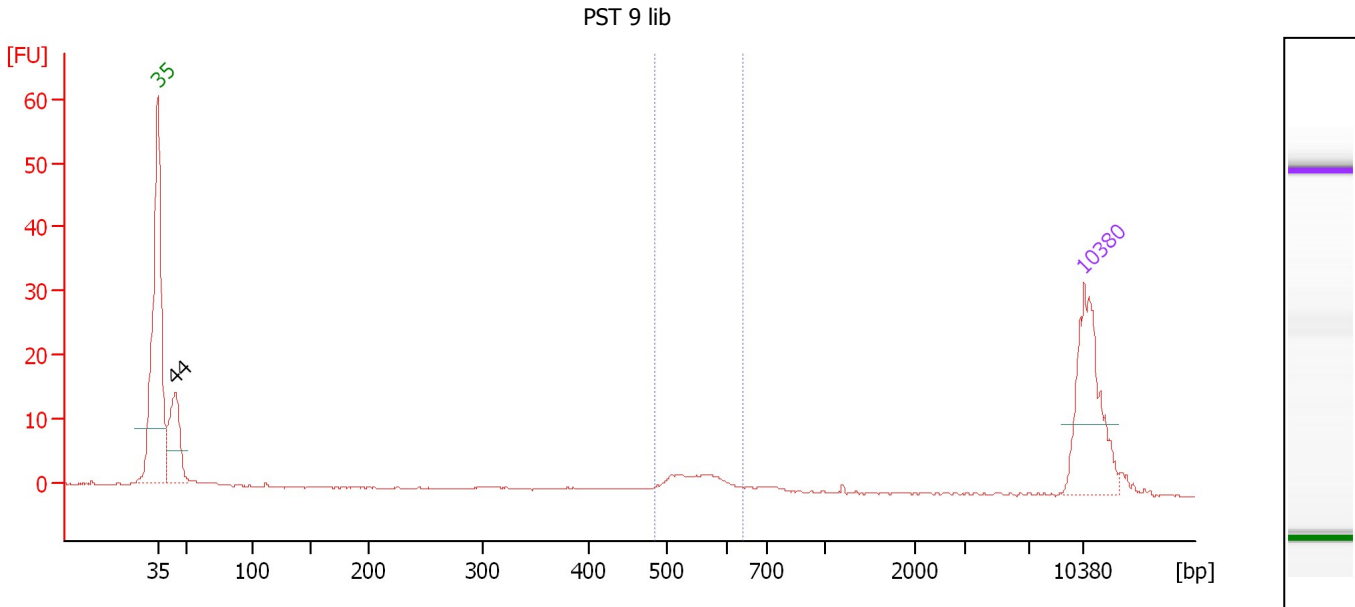
Region table for sample 3 : PST 6 lib

From [bp]	Molarity [pmol/l]	Average Size [bp]	Conc. [pg/μl]	To [bp]	Corr. Area	% of Total	Size distribution in CV [%]	Color
490	116.1	573	43.73	683	23.0	36	7.1	Blue

Assay Class: High Sensitivity DNA Assay
 Data Path: C:\...ents and Settings\Bioanalyzer\2012-03-01\2012-03-01_005.xad

Created: 3/1/2012 3:01:19 PM
 Modified: 3/1/2012 3:53:57 PM

Electropherogram Summary Continued ...



Overall Results for sample 4 : PST 9 lib

Number of peaks found: 1 Corr. Area 1: 14.9
 Noise: 0.1

Peak table for sample 4 : PST 9 lib

Peak	Size [bp]	Conc. [pg/μl]	Molarity [pmol/l]	Observations
1	35	125.00	5,411.3	Lower Marker
2	44	78.05	2,678.2	
3	10,380	75.00	10.9	Upper Marker

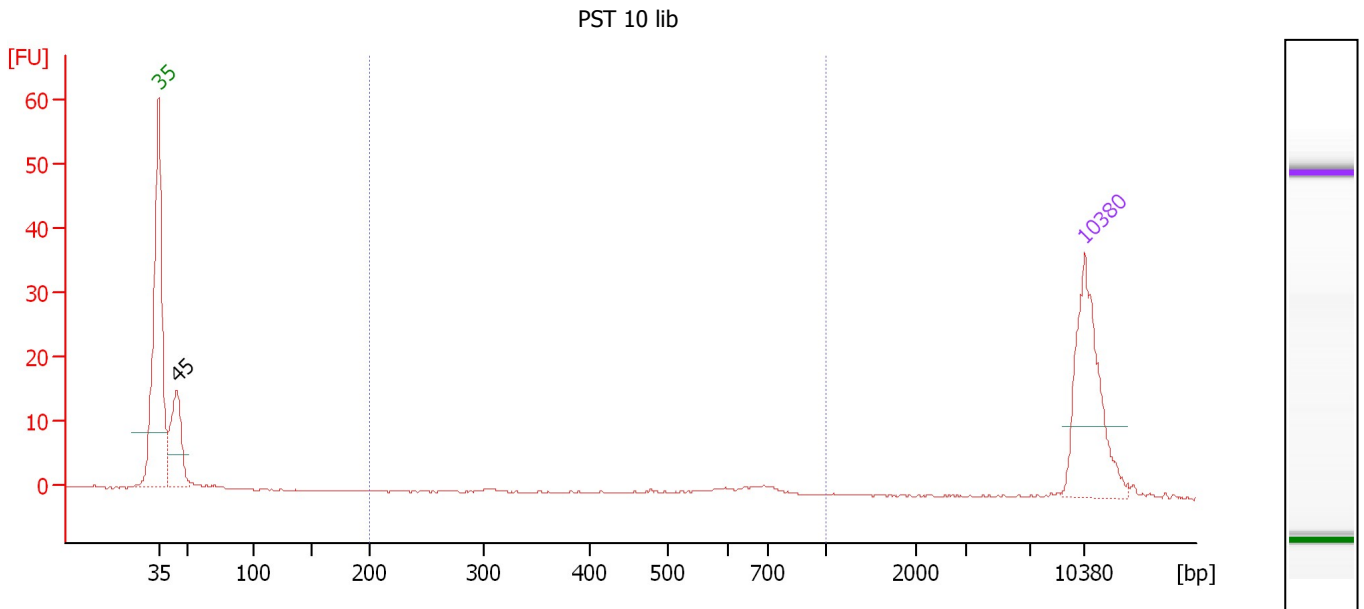
Region table for sample 4 : PST 9 lib

From [bp]	Molarity [pmol/l]	Average Size [bp]	Conc. [pg/μl]	To [bp]	Corr. Area	% of Total	Size distribution in CV [%]	Color
484	74.2	551	26.87	638	14.9	23	6.6	Blue

Assay Class: High Sensitivity DNA Assay
 Data Path: C:\...ents and Settings\Bioanalyzer\2012-03-01\2012-03-01_005.xad

Created: 3/1/2012 3:01:19 PM
 Modified: 3/1/2012 3:53:57 PM

Electropherogram Summary Continued ...



Overall Results for sample 5 : PST 10 lib

Number of peaks found: 1 Corr. Area 1: 9.0
 Noise: 0.1

Peak table for sample 5 : PST 10 lib

Peak	Size [bp]	Conc. [pg/μl]	Molarity [pmol/l]	Observations
1	35	125.00	5,411.3	Lower Marker
2	45	69.53	2,362.6	
3	10,380	75.00	10.9	Upper Marker

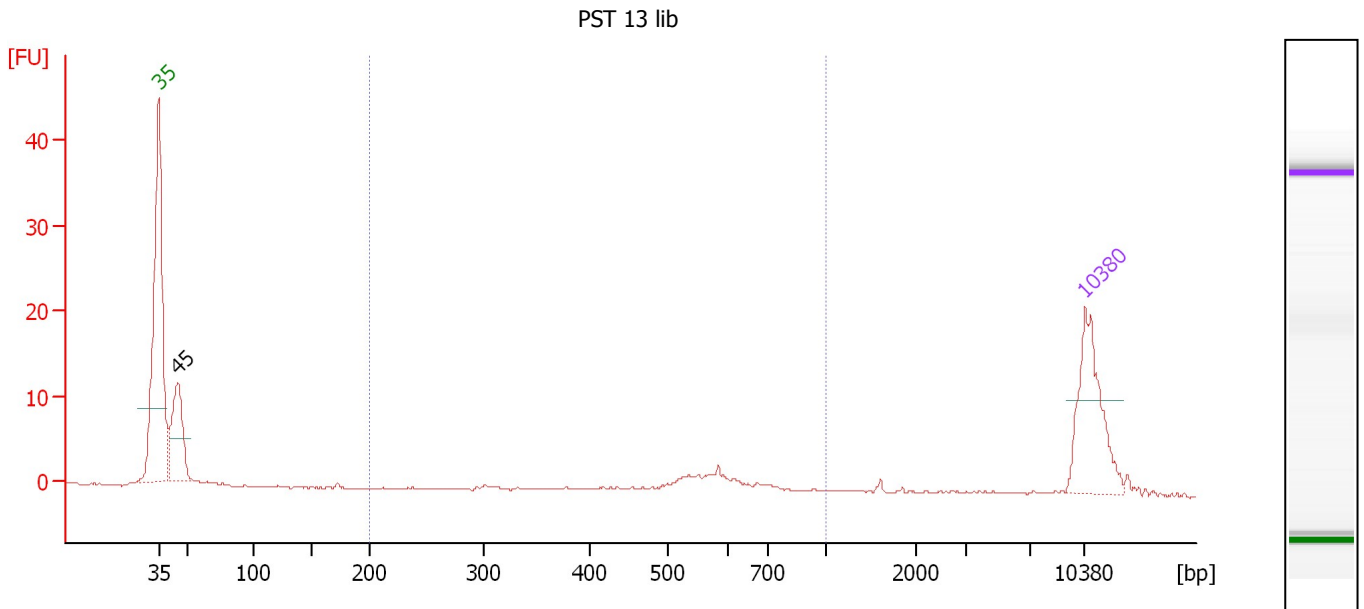
Region table for sample 5 : PST 10 lib

From [bp]	Molarity [pmol/l]	Average Size [bp]	Conc. [pg/μl]	To [bp]	Corr. Area	% of Total	Size distribution in CV [%]	Color
200	35.7	617	13.51	1,000	9.0	18	19.6	Blue

Assay Class: High Sensitivity DNA Assay
 Data Path: C:\...ents and Settings\Bioanalyzer\2012-03-01\2012-03-01_005.xad

Created: 3/1/2012 3:01:19 PM
 Modified: 3/1/2012 3:53:57 PM

Electropherogram Summary Continued ...



Overall Results for sample 6 : PST 13 lib

Number of peaks found: 1 Corr. Area 1: 18.5
 Noise: 0.1

Peak table for sample 6 : PST 13 lib

Peak	Size [bp]	Conc. [pg/μl]	Molarity [pmol/l]	Observations
1	35	125.00	5,411.3	Lower Marker
2	45	99.65	3,354.0	
3	10,380	75.00	10.9	Upper Marker

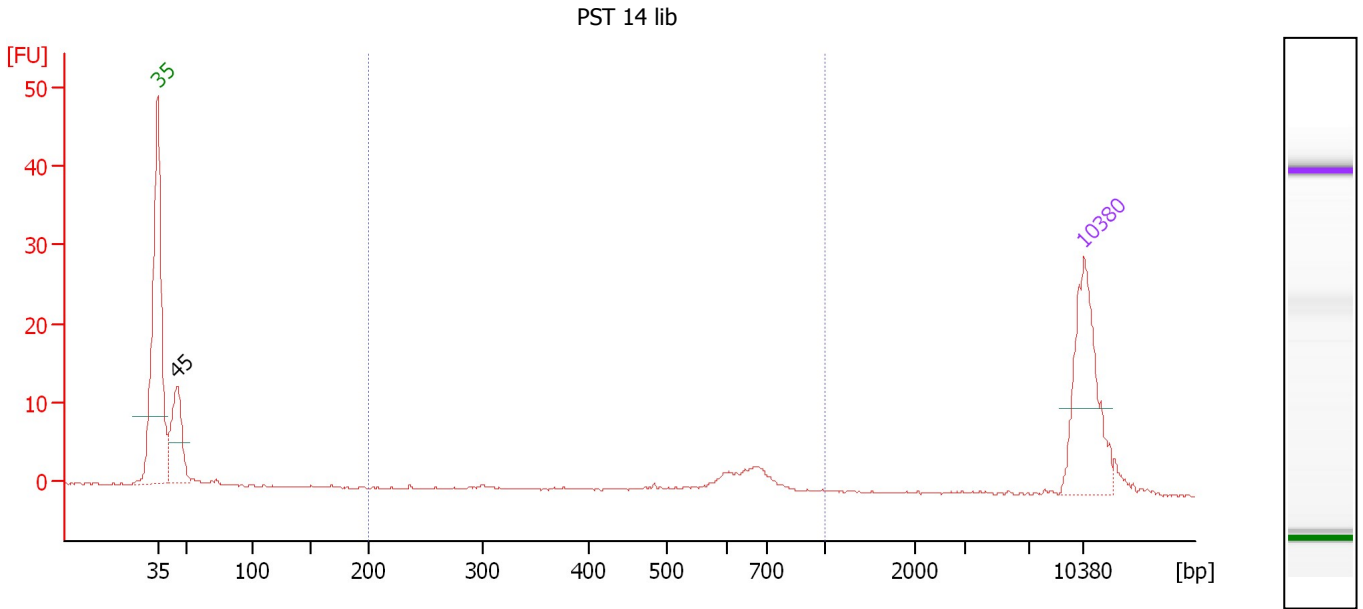
Region table for sample 6 : PST 13 lib

From [bp]	Molarity [pmol/l]	Average Size [bp]	Conc. [pg/μl]	To [bp]	Corr. Area	% of Total	Size distribution in CV [%]	Color
200	141.5	581	51.01	1,000	18.5	31	21.2	Blue

Assay Class: High Sensitivity DNA Assay
 Data Path: C:\...ents and Settings\Bioanalyzer\2012-03-01\2012-03-01_005.xad

Created: 3/1/2012 3:01:19 PM
 Modified: 3/1/2012 3:53:57 PM

Electropherogram Summary Continued ...



Overall Results for sample 7 : PST 14 lib

Number of peaks found: 1 Corr. Area 1: 17.9
 Noise: 0.1

Peak table for sample 7 : PST 14 lib

Peak	Size [bp]	Conc. [pg/μl]	Molarity [pmol/l]	Observations
1	35	125.00	5,411.3	Lower Marker
2	45	76.58	2,558.4	
3	10,380	75.00	10.9	Upper Marker

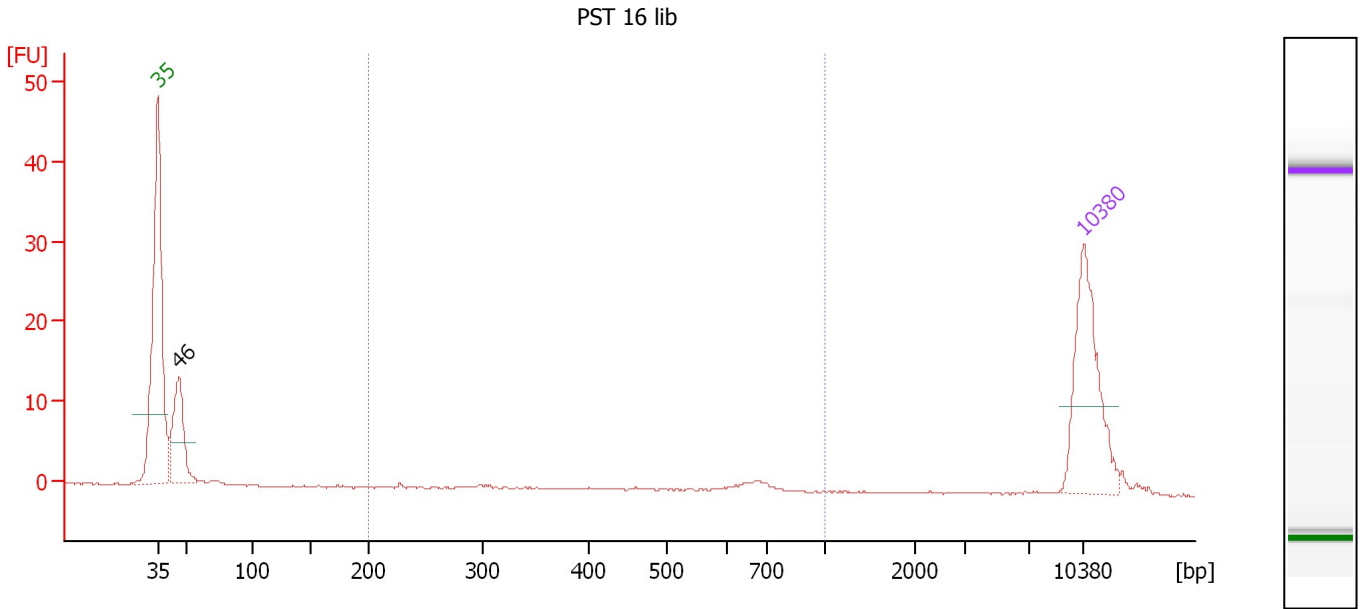
Region table for sample 7 : PST 14 lib

From [bp]	Molarity [pmol/l]	Average Size [bp]	Conc. [pg/μl]	To [bp]	Corr. Area	% of Total	Size distribution in CV [%]	Color
200	90.5	629	35.60	1,000	17.9	32	17.5	Blue

Assay Class: High Sensitivity DNA Assay
 Data Path: C:\...ents and Settings\Bioanalyzer\2012-03-01\2012-03-01_005.xad

Created: 3/1/2012 3:01:19 PM
 Modified: 3/1/2012 3:53:57 PM

Electropherogram Summary Continued ...



Overall Results for sample 8 : PST 16 lib

Number of peaks found: 1 Corr. Area 1: 4.9
 Noise: 0.1

Peak table for sample 8 : PST 16 lib

Peak	Size [bp]	Conc. [pg/μl]	Molarity [pmol/l]	Observations
1	35	125.00	5,411.3	Lower Marker
2	46	76.56	2,496.1	
3	10,380	75.00	10.9	Upper Marker

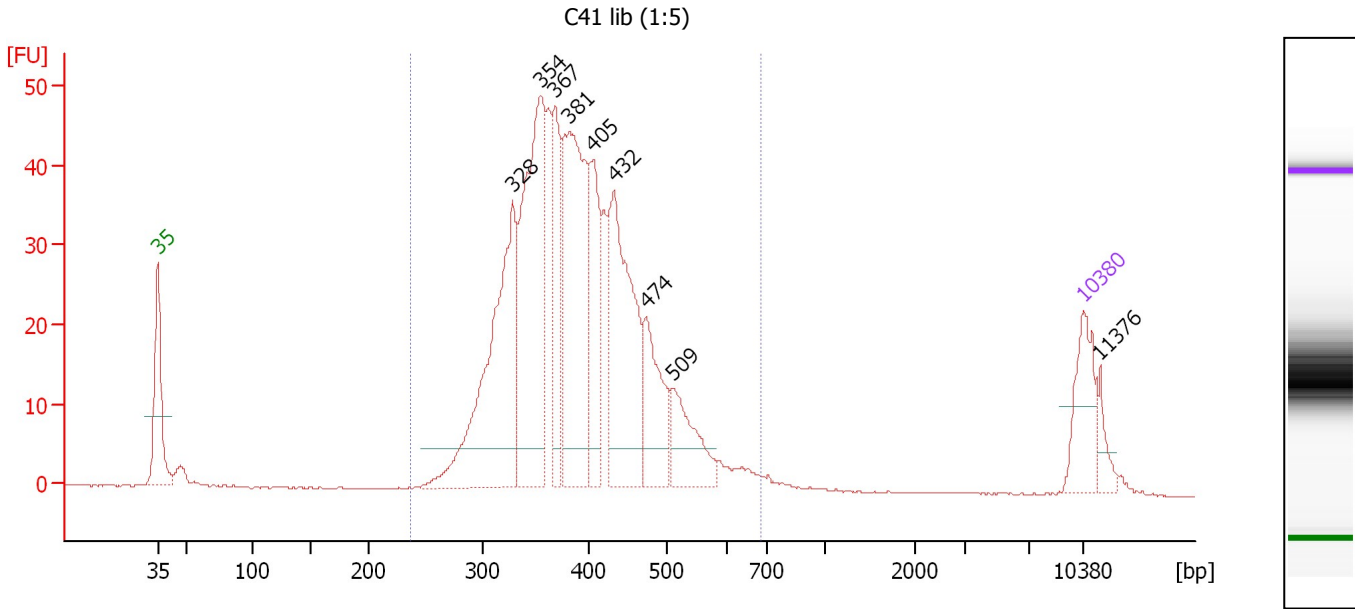
Region table for sample 8 : PST 16 lib

From [bp]	Molarity [pmol/l]	Average Size [bp]	Conc. [pg/μl]	To [bp]	Corr. Area	% of Total	Size distribution in CV [%]	Color
200	25.5	621	9.33	1,000	4.9	13	20.1	Blue

Assay Class: High Sensitivity DNA Assay
 Data Path: C:\...ents and Settings\Bioanalyzer\2012-03-01\2012-03-01_005.xad

Created: 3/1/2012 3:01:19 PM
 Modified: 3/1/2012 3:53:57 PM

Electropherogram Summary Continued ...



Overall Results for sample 9 : C41 lib (1:5)

Number of peaks found: 9 Corr. Area 1: 676.5
 Noise: 0.1

Peak table for sample 9 : C41 lib (1:5)

Peak	Size [bp]	Conc. [pg/μl]	Molarity [pmol/l]	Observations
1	35	125.00	5,411.3	Lower Marker
2	328	434.06	2,003.0	
3	354	422.62	1,806.6	
4	367	158.05	651.6	
5	381	387.60	1,543.3	
6	405	148.61	556.4	
7	432	314.39	1,102.8	
8	474	130.98	418.9	
9	509	101.67	302.5	
10	10,380	75.00	10.9	Upper Marker
11	11,376	0.00	0.0	

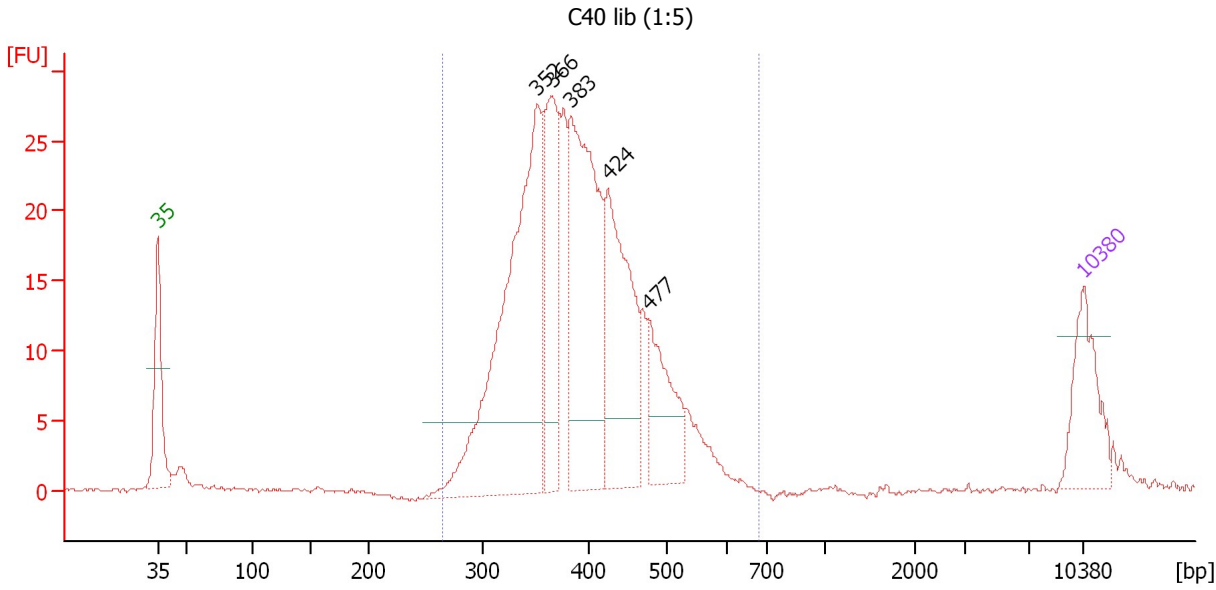
Region table for sample 9 : C41 lib (1:5)

From [bp]	Molarity [pmol/l]	Average Size [bp]	Conc. [pg/μl]	To [bp]	Corr. Area	% of Total	Size distribution in CV [%]	Color
236	9,487.7	395	2,386.26	683	676.5	96	17.6	Blue

Assay Class: High Sensitivity DNA Assay
 Data Path: C:\...ents and Settings\Bioanalyzer\2012-03-01\2012-03-01_005.xad

Created: 3/1/2012 3:01:19 PM
 Modified: 3/1/2012 3:53:57 PM

Electropherogram Summary Continued ...



Overall Results for sample 10 : C40 lib (1:5)

Number of peaks found: 5 Corr. Area 1: 371.9
 Noise: 0.1

Peak table for sample 10 : C40 lib (1:5)

Peak	Size [bp]	Conc. [pg/μl]	Molarity [pmol/l]	Observations
1	35	125.00	5,411.3	Lower Marker
2	352	526.41	2,268.7	
3	366	183.01	757.8	
4	383	352.63	1,395.6	
5	424	241.88	863.9	
6	477	114.07	362.4	
7	10,380	75.00	10.9	Upper Marker

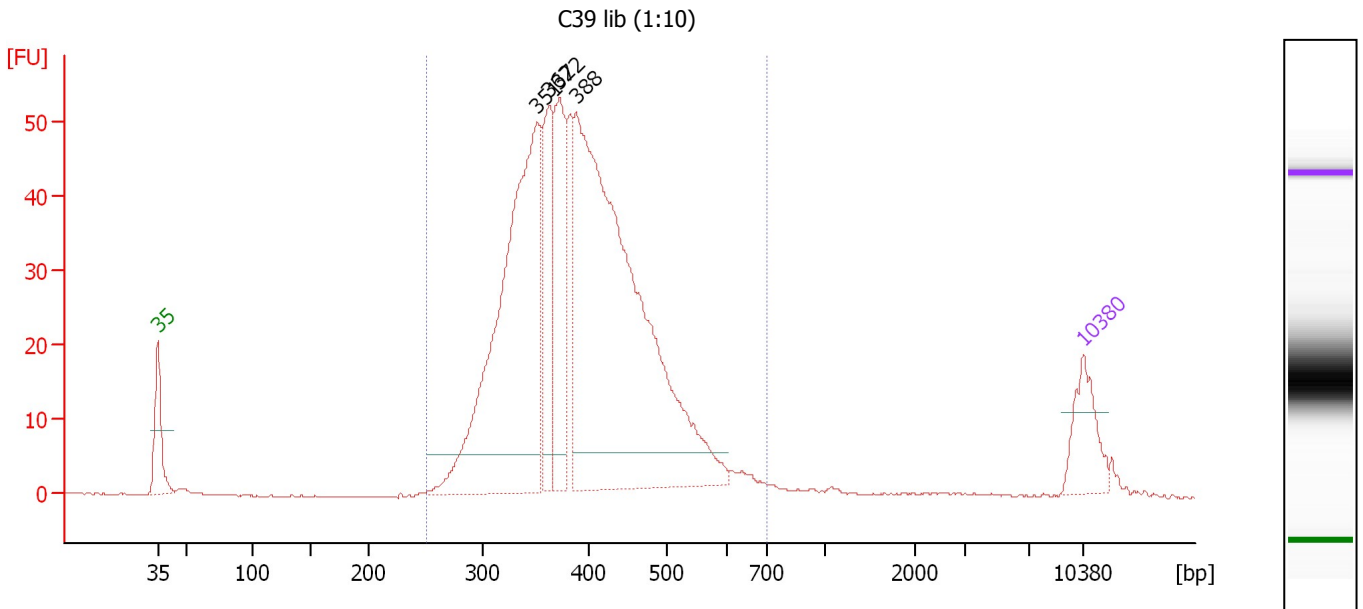
Region table for sample 10 : C40 lib (1:5)

From [bp]	Molarity [pmol/l]	Average Size [bp]	Conc. [pg/μl]	To [bp]	Corr. Area	% of Total	Size distribution in CV [%]	Color
265	6,313.0	396	1,602.02	677	371.9	98	15.9	Blue

Assay Class: High Sensitivity DNA Assay
 Data Path: C:\...ents and Settings\Bioanalyzer\2012-03-01\2012-03-01_005.xad

Created: 3/1/2012 3:01:19 PM
 Modified: 3/1/2012 3:53:57 PM

Electropherogram Summary Continued ...



Overall Results for sample 11 : C39 lib (1:10)

Number of peaks found: 4 Corr. Area 1: 759.8
 Noise: 0.1

Peak table for sample 11 : C39 lib (1:10)

Peak	Size [bp]	Conc. [pg/μl]	Molarity [pmol/l]	Observations
1	35	125.00	5,411.3	Lower Marker
2	351	849.15	3,663.7	
3	362	203.17	849.8	
4	372	240.03	977.5	
5	388	1,220.58	4,769.9	
6	10,380	75.00	10.9	Upper Marker

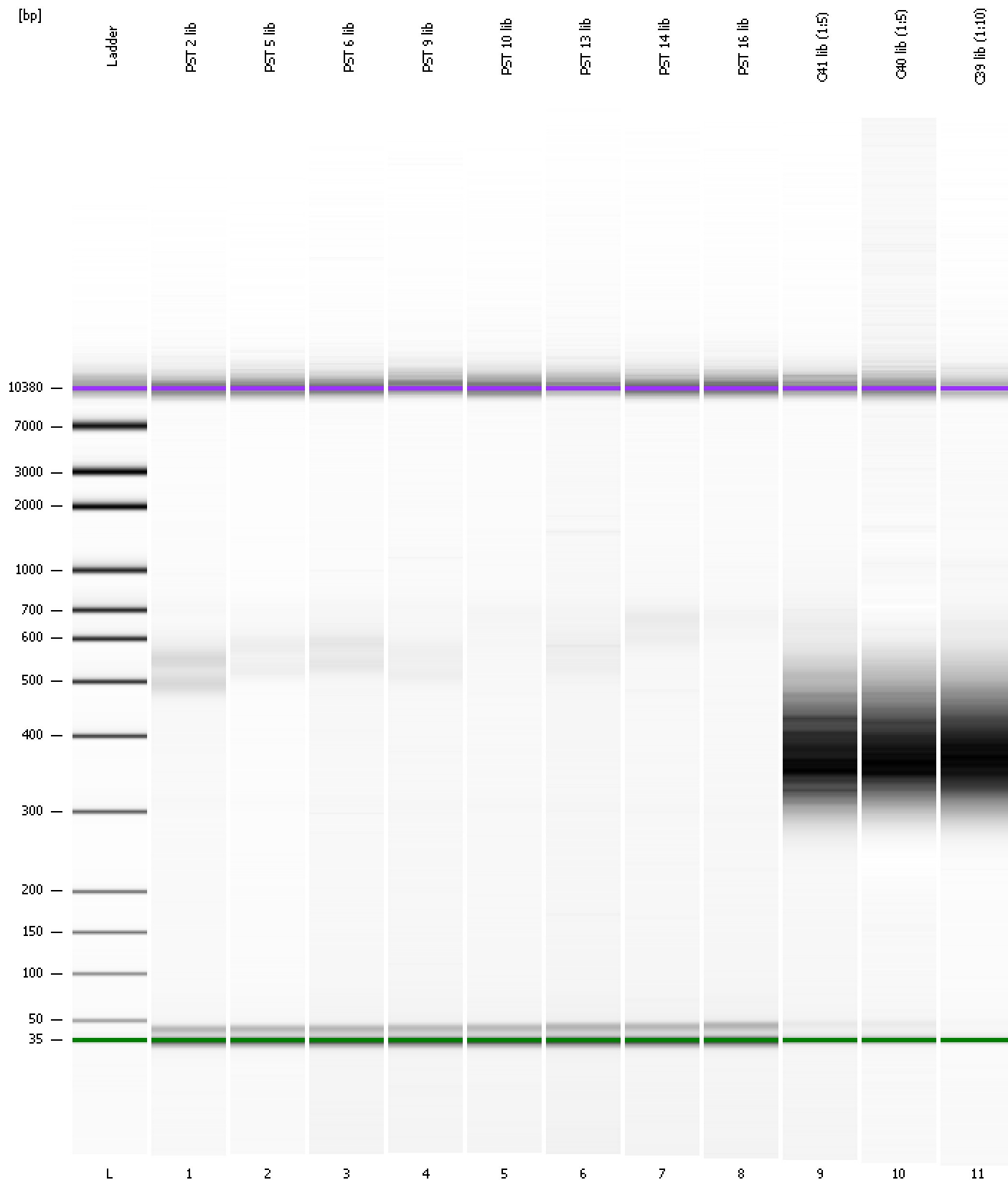
Region table for sample 11 : C39 lib (1:10)

From [bp]	Molarity [pmol/l]	Average Size [bp]	Conc. [pg/μl]	To [bp]	Corr. Area	% of Total	Size distribution in CV [%]	Color
251	10,747.6	397	2,717.34	697	759.8	97	17.7	Blue

Assay Class: High Sensitivity DNA Assay
Data Path: C:\...ents and Settings\Bioanalyzer\2012-03-01\2012-03-01_005.xad

Created: 3/1/2012 3:01:19 PM
Modified: 3/1/2012 3:53:57 PM

Gel Image

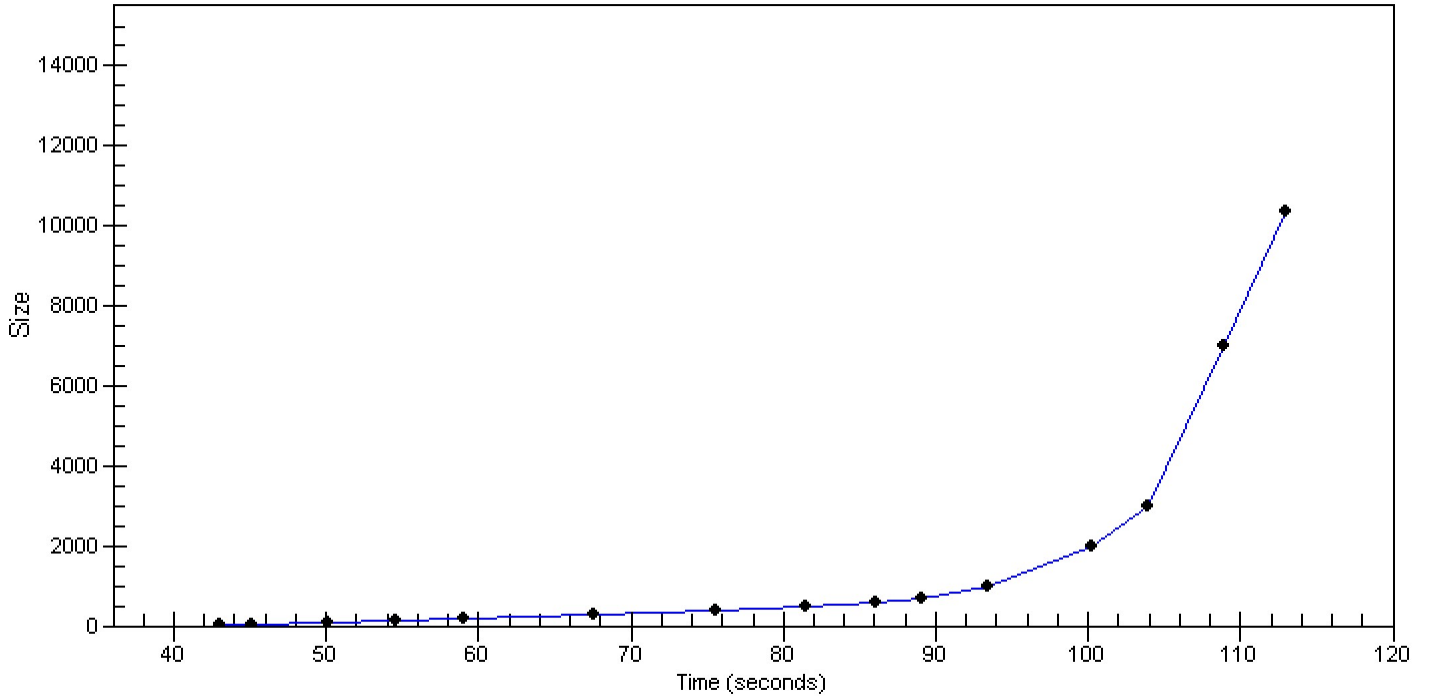


Assay Class: High Sensitivity DNA Assay
Data Path: C:\...ents and Settings\Bioanalyzer\2012-03-01\2012-03-01_005.xad

Created: 3/1/2012 3:01:19 PM
Modified: 3/1/2012 3:53:57 PM

Curves

Standard Curve



Assay Class: High Sensitivity DNA Assay
 Data Path: C:\...ents and Settings\Bioanalyzer\2012-03-01\2012-03-01_005.xad

Created: 3/1/2012 3:01:19 PM
 Modified: 3/1/2012 3:53:57 PM

Run Logbook

Description	Number	Source	Category	Sub Category	Time	Time Zone	User	Host
Run ended on port 1 (Number of wells acquired: 12)		Instrument	Run		3/1/2012 3:42:38 PM	(GMT --08:00) Pacific Standard Time	UC Davis	D8XSMGH1
Run started on port 1 (File: C:\Documents and Settings\Bioanalyzer\2012-03-01\2012-03-01_005.xad)		Instrument	Run		3/1/2012 3:01:24 PM	(GMT --08:00) Pacific Standard Time	UC Davis	D8XSMGH1
Product Number : G2938B		Instrument	Run		3/1/2012 3:01:24 PM	(GMT --08:00) Pacific Standard Time	UC Davis	D8XSMGH1
Name :		Instrument	Run		3/1/2012 3:01:24 PM	(GMT --08:00) Pacific Standard Time	UC Davis	D8XSMGH1
Vendor : Agilent Technologies		Instrument	Run		3/1/2012 3:01:24 PM	(GMT --08:00) Pacific Standard Time	UC Davis	D8XSMGH1
Serial# : DE13701086		Instrument	Run		3/1/2012 3:01:24 PM	(GMT --08:00) Pacific Standard Time	UC Davis	D8XSMGH1
Firmware : C.01.069		Instrument	Run		3/1/2012 3:01:24 PM	(GMT --08:00) Pacific Standard Time	UC Davis	D8XSMGH1
Cartridge : Electrode		Instrument	Run		3/1/2012 3:01:24 PM	(GMT --08:00) Pacific Standard Time	UC Davis	D8XSMGH1