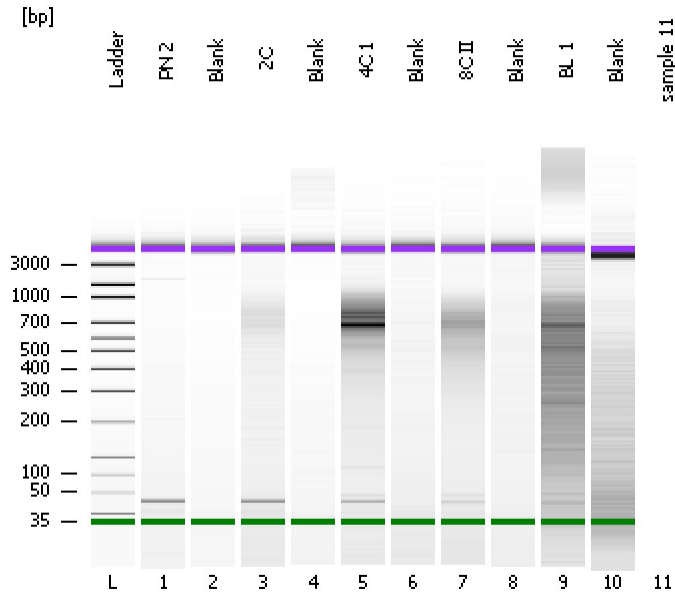


Assay Class: High Sensitivity DNA Assay
Data Path: C:\...ents and Settings\Bioanalyzer\2012-03-01\2012-03-01_006.xad

Created: 3/1/2012 4:15:51 PM
Modified: 3/1/2012 4:55:07 PM

Electrophoresis File Run Summary



Instrument Information:

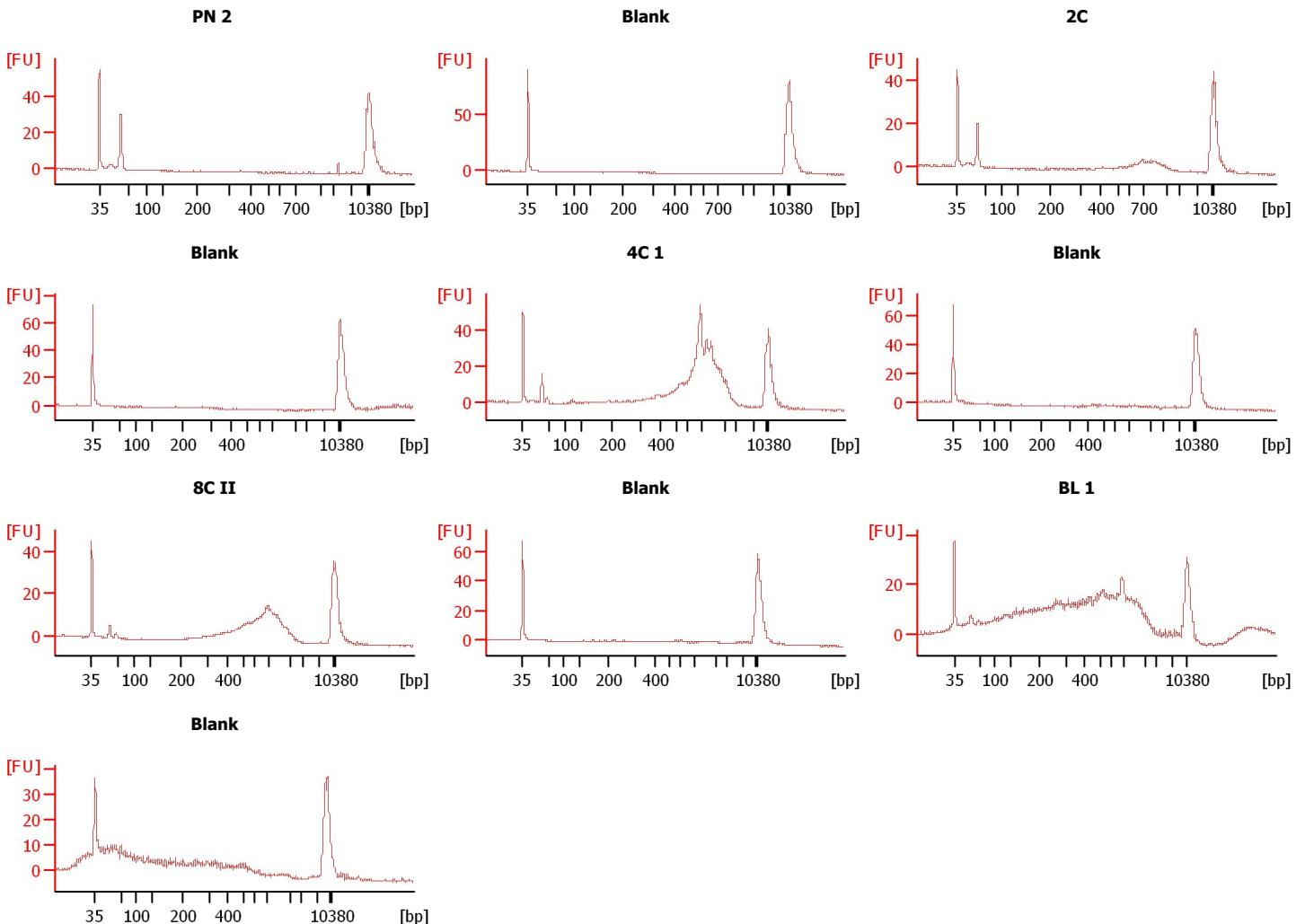
Instrument Name: DE13701086 Firmware: C.01.069
Serial#: DE13701086 Type: G2938B

Assay Information:

Assay Origin Path: C:\Program Files\Agilent\2100 bioanalyzer\2100 expert\assays\dsDNA\High Sensitivity DNA.xsy
Assay Class: High Sensitivity DNA Assay
Version: 1.03
Assay Comments: Copyright © 2003-2010 Agilent Technologies

Chip Information:

Chip Lot #: Reagent Kit Lot #: Chip Comments:



Assay Class: High Sensitivity DNA Assay
 Data Path: C:\...ents and Settings\Bioanalyzer\2012-03-01\2012-03-01_006.xad

Created: 3/1/2012 4:15:51 PM
 Modified: 3/1/2012 4:55:07 PM

Electrophoresis File Run Summary (Chip Summary)

Sample Name	Sample Comment	Rest. Digest	Status	Observation	Result Label	Result Color
PN 2		<input type="checkbox"/>	✓			
Blank		<input type="checkbox"/>	✓			
2C		<input type="checkbox"/>	✓			
Blank		<input type="checkbox"/>	✓			
4C 1		<input type="checkbox"/>	✓			
Blank		<input type="checkbox"/>	✓			
8C II		<input type="checkbox"/>	✓			
Blank		<input type="checkbox"/>	✓			
BL 1		<input type="checkbox"/>	✓			
Blank		<input type="checkbox"/>	✓			
sample 11		<input type="checkbox"/>	✗			
Ladder		<input type="checkbox"/>	✓			

Chip Lot #

Reagent Kit Lot #

Chip Comments :

Assay Class: High Sensitivity DNA Assay
Data Path: C:\...ents and Settings\Bioanalyzer\2012-03-01\2012-03-01_006.xad

Created: 3/1/2012 4:15:51 PM
Modified: 3/1/2012 4:55:07 PM

Electrophoresis Assay Details

General Analysis Settings

Number of Available Sample and Ladder Wells (Max.) : 12
Minimum Visible Range [s] : 32
Maximum Visible Range [s] : 138
Start Analysis Time Range [s] : 33
End Analysis Time Range [s] : 137.5
Ladder Concentration [pg/μl] : 1950
Uses Standard Area for Ladder Fragments
Lower Marker Concentration [pg/μl] : 125
Upper Marker Concentration [pg/μl] : 75
Used Upper Marker for Quantitation
Standard Curve Fit is Point to Point
Show Data Aligned to Lower and Upper Marker

Integrator Settings

Integration Start Time [s] : 33.05
Integration End Time [s] : 137
Slope Threshold : 0.8
Height Threshold [FU] : 5
Area Threshold : 0.1
Width Threshold [s] : 0.6
Baseline Plateau [s] : 0.5

Filter Settings

Filter Width [s] : 0.5
Polynomial Order : 4

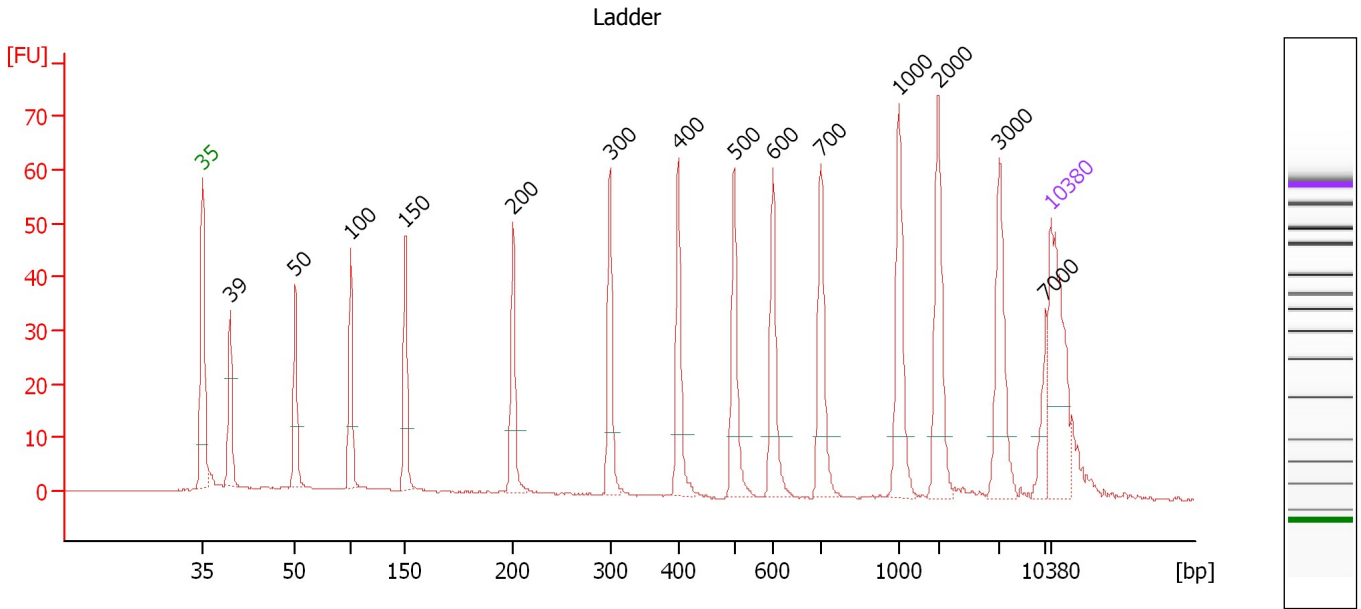
Ladder

Ladder Peak	Size	Area
1	35	160
2	50	210
3	100	208
4	150	221
5	200	242
6	300	270
7	400	305
8	500	306
9	600	336
10	700	321
11	1000	366
12	2000	413
13	3000	411
14	7000	400
15	10380	214

Assay Class: High Sensitivity DNA Assay
 Data Path: C:\...ents and Settings\Bioanalyzer\2012-03-01\2012-03-01_006.xad

Created: 3/1/2012 4:15:51 PM
 Modified: 3/1/2012 4:55:07 PM

Electropherogram Summary



Overall Results for Ladder

Noise: 0.1

Peak table for Ladder

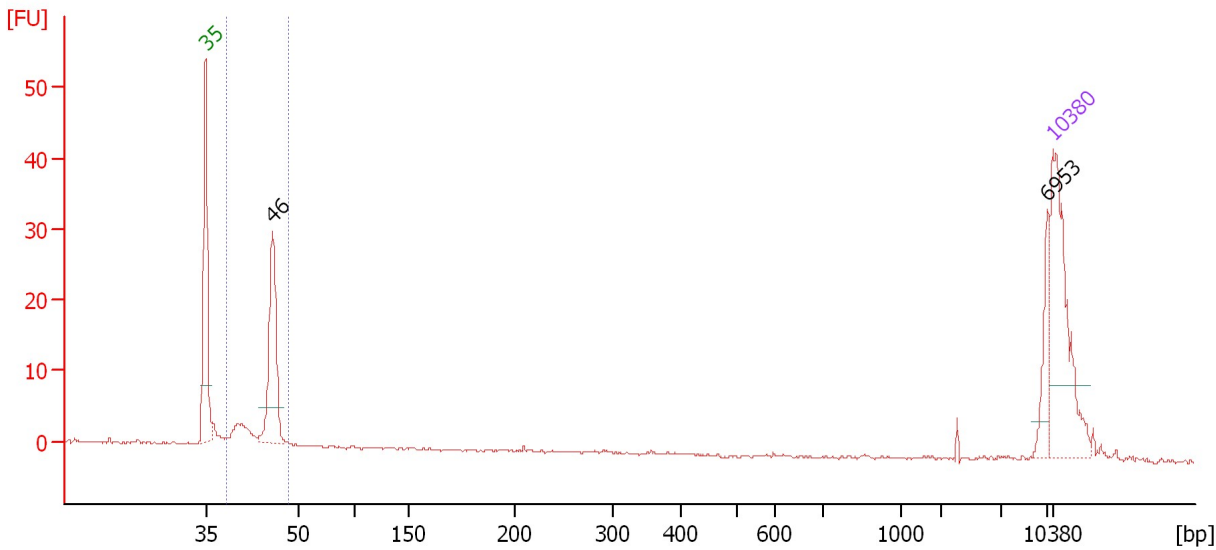
Peak	Size [bp]	Conc. [pg/μl]	Molarity [pmol/l]	Observations
1	35	125.00	5,411.3	Lower Marker
2	39	0.00	0.0	
3	50	150.00	4,545.5	Ladder Peak
4	100	150.00	2,272.7	Ladder Peak
5	150	150.00	1,515.2	Ladder Peak
6	200	150.00	1,136.4	Ladder Peak
7	300	150.00	757.6	Ladder Peak
8	400	150.00	568.2	Ladder Peak
9	500	150.00	454.5	Ladder Peak
10	600	150.00	378.8	Ladder Peak
11	700	150.00	324.7	Ladder Peak
12	1,000	150.00	227.3	Ladder Peak
13	2,000	150.00	113.6	Ladder Peak
14	3,000	150.00	75.8	Ladder Peak
15	7,000	150.00	32.5	Ladder Peak
16	10,380	75.00	10.9	Upper Marker

Assay Class: High Sensitivity DNA Assay
 Data Path: C:\...ents and Settings\Bioanalyzer\2012-03-01\2012-03-01_006.xad

Created: 3/1/2012 4:15:51 PM
 Modified: 3/1/2012 4:55:07 PM

Electropherogram Summary Continued ...

PN 2



Overall Results for sample 1 : PN 2

Number of peaks found: 2 Corr. Area 1: 56.4
 Noise: 0.2

Peak table for sample 1 : PN 2

Peak	Size [bp]	Conc. [pg/μl]	Molarity [pmol/l]	Observations
1	35	125.00	5,411.3	Lower Marker
2	46	115.48	3,813.9	
3	6,953	24.56	5.4	
4	10,380	75.00	10.9	Upper Marker

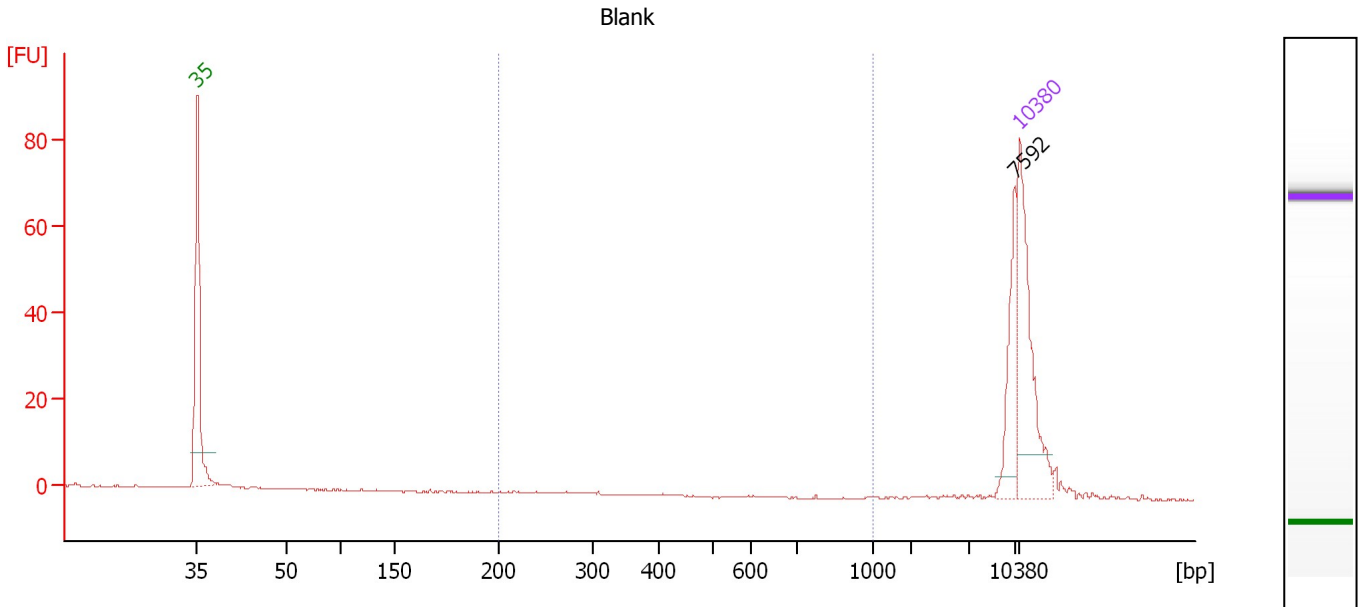
Region table for sample 1 : PN 2

From [bp]	Molarity [pmol/l]	Average Size [bp]	Conc. [pg/μl]	To [bp]	Corr. Area	% of Total	Size distribution in CV [%]	Color
38	4,813.3	45	142.83	48	56.4	67	4.4	Blue

Assay Class: High Sensitivity DNA Assay
 Data Path: C:\...ents and Settings\Bioanalyzer\2012-03-01\2012-03-01_006.xad

Created: 3/1/2012 4:15:51 PM
 Modified: 3/1/2012 4:55:07 PM

Electropherogram Summary Continued ...



Overall Results for sample 2 : Blank

Number of peaks found: 1 Corr. Area 1: 0.0
 Noise: 0.1

Peak table for sample 2 : Blank

Peak	Size [bp]	Conc. [pg/μl]	Molarity [pmol/l]	Observations
1	35	125.00	5,411.3	Lower Marker
2	7,592	40.10	8.0	
3	10,380	75.00	10.9	Upper Marker

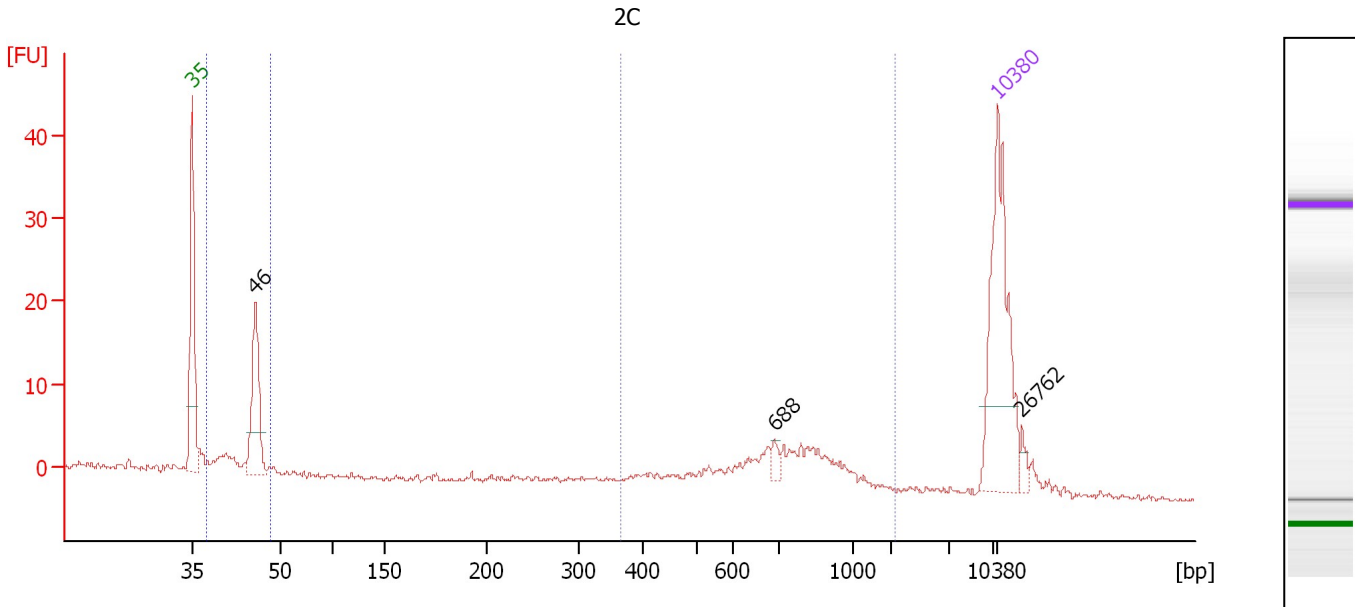
Region table for sample 2 : Blank

From [bp]	Molarity [pmol/l]	Average Size [bp]	Conc. [pg/μl]	To [bp]	Corr. Area	% of Total	Size distribution in CV [%]	Color
200	0.2	535	0.04	1,000	0.0	0	45.4	Blue

Assay Class: High Sensitivity DNA Assay
 Data Path: C:\...ents and Settings\Bioanalyzer\2012-03-01\2012-03-01_006.xad

Created: 3/1/2012 4:15:51 PM
 Modified: 3/1/2012 4:55:07 PM

Electropherogram Summary Continued ...



Overall Results for sample 3 : 2C

Number of peaks found: 3 Corr. Area 1: 58.4
 Noise: 0.3 Corr. Area 2: 38.8

Peak table for sample 3 : 2C

Peak	Size [bp]	Conc. [pg/μl]	Molarity [pmol/l]	Observations
1	35	125.00	5,411.3	Lower Marker
2	46	72.02	2,386.9	
3	688	5.40	11.9	
4	10,380	75.00	10.9	Upper Marker
5	26,762	0.00	0.0	

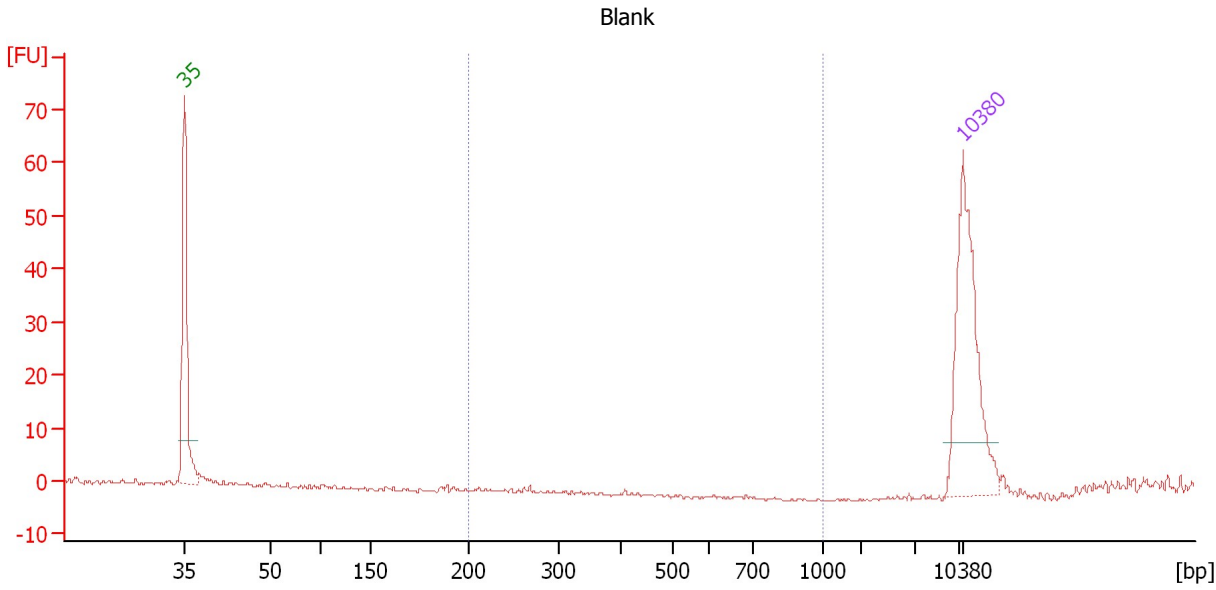
Region table for sample 3 : 2C

From [bp]	Molarity [pmol/l]	Average Size [bp]	Conc. [pg/μl]	To [bp]	Corr. Area	% of Total	Size distribution in CV [%]	Color
38	2,932.6	45	86.61	48	38.8	33	5.0	Blue
363	179.0	747	80.00	2,061	58.4	50	30.1	Dark Blue

Assay Class: High Sensitivity DNA Assay
 Data Path: C:\...ents and Settings\Bioanalyzer\2012-03-01\2012-03-01_006.xad

Created: 3/1/2012 4:15:51 PM
 Modified: 3/1/2012 4:55:07 PM

Electropherogram Summary Continued ...



Overall Results for sample 4 : Blank

Number of peaks found: 0 Corr. Area 1: 0.0
 Noise: 0.3

Peak table for sample 4 : Blank

Peak	Size [bp]	Conc. [pg/μl]	Molarity [pmol/l]	Observations
1	35	125.00	5,411.3	Lower Marker
2	10,380	75.00	10.9	Upper Marker

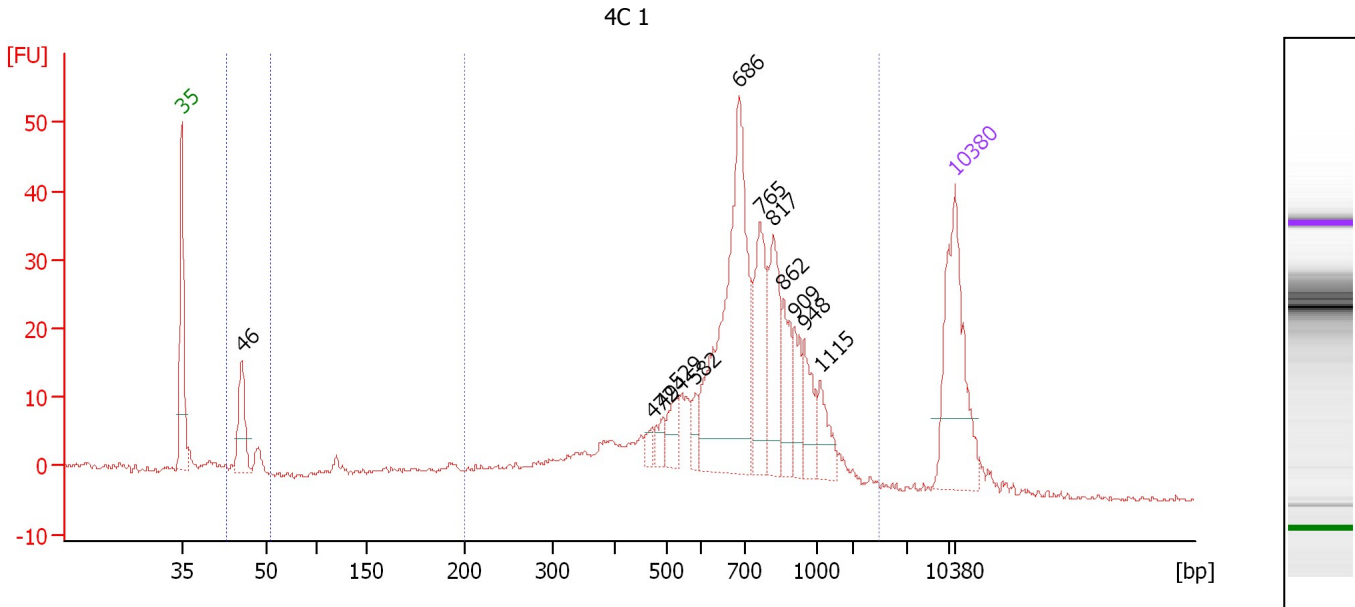
Region table for sample 4 : Blank

From [bp]	Molarity [pmol/l]	Average Size [bp]	Conc. [pg/μl]	To [bp]	Corr. Area	% of Total	Size distribution in CV [%]	Color
200	0.0	0	0.00	1,000	0.0	0	0.0	Blue

Assay Class: High Sensitivity DNA Assay
 Data Path: C:\...ents and Settings\Bioanalyzer\2012-03-01\2012-03-01_006.xad

Created: 3/1/2012 4:15:51 PM
 Modified: 3/1/2012 4:55:07 PM

Electropherogram Summary Continued ...



Overall Results for sample 5 : 4C 1

Number of peaks found: 12 Corr. Area 1: 480.1
 Noise: 0.4 Corr. Area 2: 29.2

Peak table for sample 5 : 4C 1

Peak	Size [bp]	Conc. [pg/μl]	Molarity [pmol/l]	Observations
1	35	125.00	5,411.3	Lower Marker
2	46	49.80	1,651.6	
3	472	7.17	23.0	
4	494	9.88	30.3	
5	529	16.82	48.2	
6	582	9.73	25.3	
7	686	187.10	413.0	
8	765	57.59	114.1	
9	817	50.77	94.2	
10	862	28.42	50.0	
11	909	21.53	35.9	
12	948	22.86	36.5	
13	1,115	19.20	26.1	
14	10,380	75.00	10.9	Upper Marker

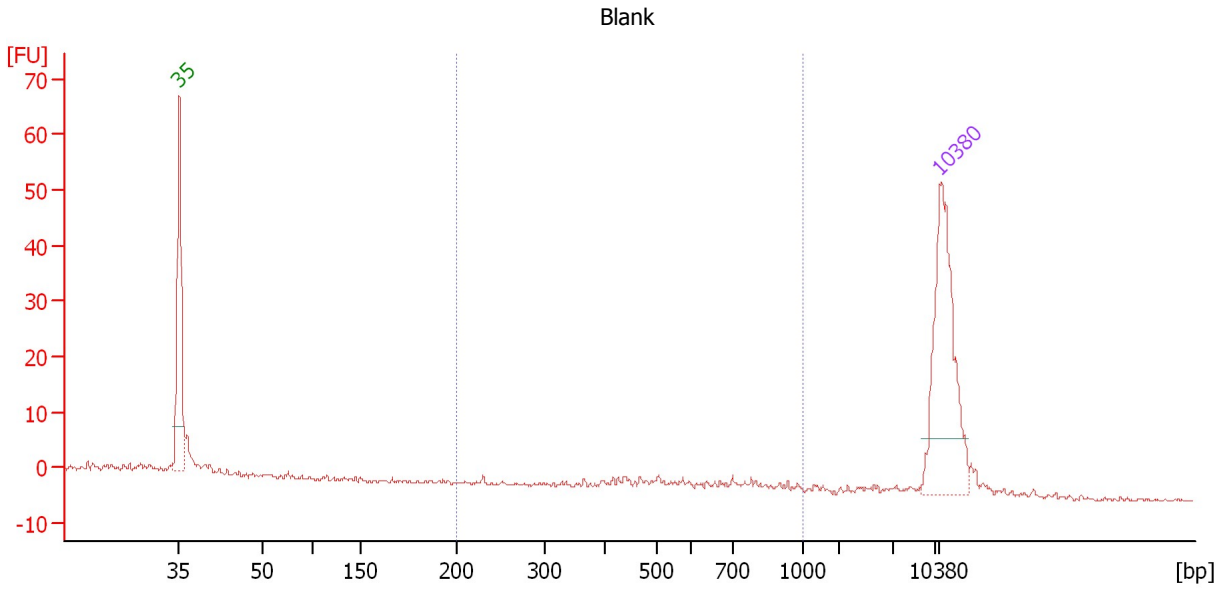
Region table for sample 5 : 4C 1

From [bp]	Molarity [pmol/l]	Average Size [bp]	Conc. [pg/μl]	To [bp]	Corr. Area	% of Total	Size distribution in CV [%]	Color
43	1,962.0	46	59.68	54	29.2	5	2.8	Blue
200	1,569.2	727	619.39	2,494	480.1	87	38.3	Light Blue

Assay Class: High Sensitivity DNA Assay
 Data Path: C:\...ents and Settings\Bioanalyzer\2012-03-01\2012-03-01_006.xad

Created: 3/1/2012 4:15:51 PM
 Modified: 3/1/2012 4:55:07 PM

Electropherogram Summary Continued ...



Overall Results for sample 6 : Blank

Number of peaks found: 0 Corr. Area 1: 9.7
 Noise: 0.3

Peak table for sample 6 : Blank

Peak	Size [bp]	Conc. [pg/μl]	Molarity [pmol/l]	Observations
1	35	125.00	5,411.3	Lower Marker
2	10,380	75.00	10.9	Upper Marker

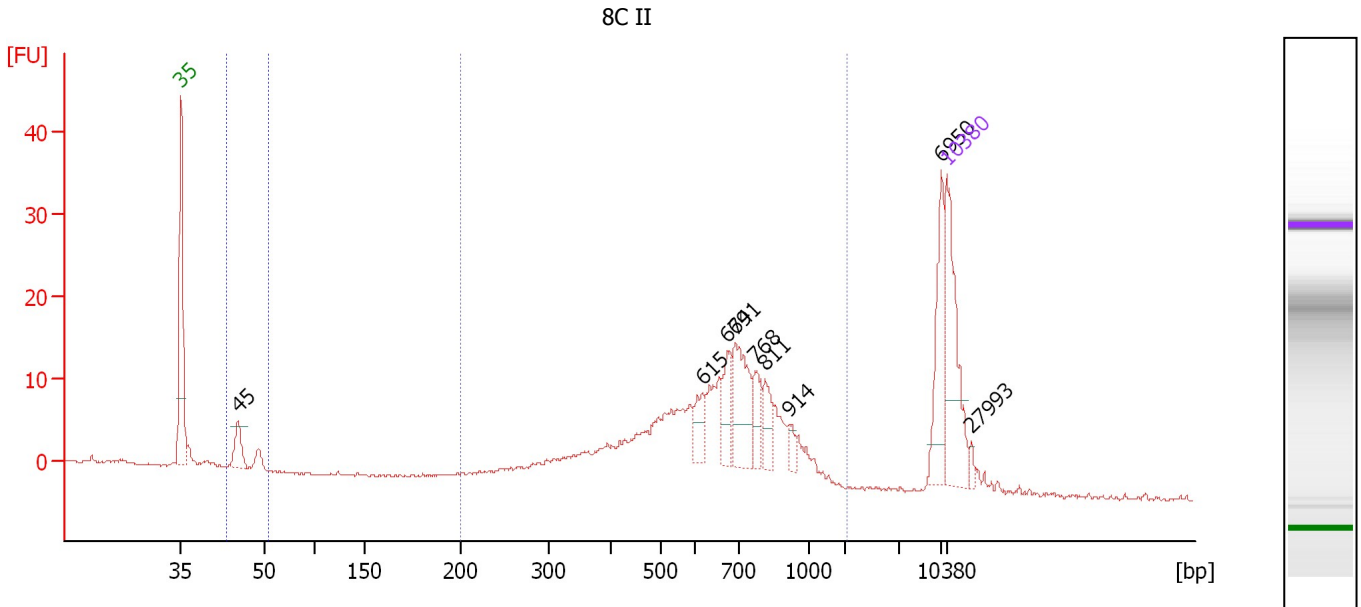
Region table for sample 6 : Blank

From [bp]	Molarity [pmol/l]	Average Size [bp]	Conc. [pg/μl]	To [bp]	Corr. Area	% of Total	Size distribution in CV [%]	Color
200	24.6	634	9.22	1,000	9.7	26	27.3	Blue

Assay Class: High Sensitivity DNA Assay
 Data Path: C:\...ents and Settings\Bioanalyzer\2012-03-01\2012-03-01_006.xad

Created: 3/1/2012 4:15:51 PM
 Modified: 3/1/2012 4:55:07 PM

Electropherogram Summary Continued ...



Overall Results for sample 7 : 8C II

Number of peaks found: 9 Corr. Area 1: 216.5
 Noise: 0.2 Corr. Area 2: 11.0

Peak table for sample 7 : 8C II

Peak	Size [bp]	Conc. [pg/μl]	Molarity [pmol/l]	Observations
1	35	125.00	5,411.3	Lower Marker
2	45	31.50	1,055.3	
3	615	20.59	50.8	
4	674	28.32	63.7	
5	691	60.91	133.5	
6	768	24.03	47.4	
7	811	22.34	41.7	
8	914	8.45	14.0	
9	6,950	51.76	11.3	
10	10,380	75.00	10.9	Upper Marker
11	27,993	0.00	0.0	

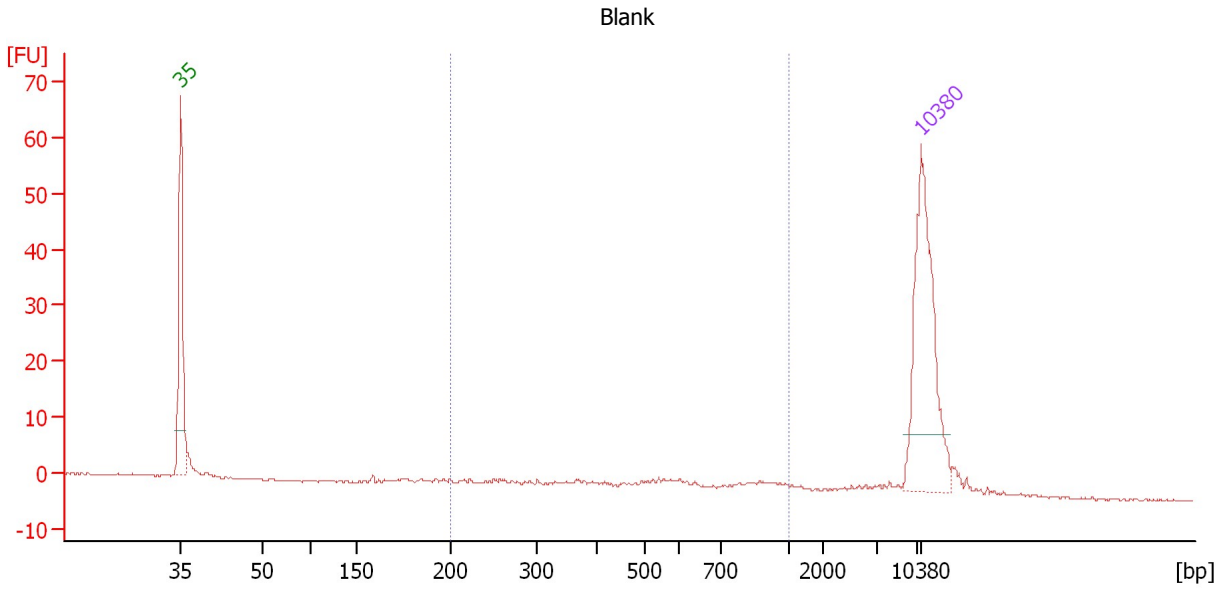
Region table for sample 7 : 8C II

From [bp]	Molarity [pmol/l]	Average Size [bp]	Conc. [pg/μl]	To [bp]	Corr. Area	% of Total	Size distribution in CV [%]	Color
43	1,336.1	46	40.68	54	11.0	4	3.6	Blue
200	1,407.5	644	514.63	2,054	216.5	81	30.8	Dark Blue

Assay Class: High Sensitivity DNA Assay
 Data Path: C:\...ents and Settings\Bioanalyzer\2012-03-01\2012-03-01_006.xad

Created: 3/1/2012 4:15:51 PM
 Modified: 3/1/2012 4:55:07 PM

Electropherogram Summary Continued ...



Overall Results for sample 8 : Blank

Number of peaks found: 0 Corr. Area 1: 27.4
 Noise: 0.1

Peak table for sample 8 : Blank

Peak	Size [bp]	Conc. [pg/μl]	Molarity [pmol/l]	Observations
1	35	125.00	5,411.3	Lower Marker
2	10,380	75.00	10.9	Upper Marker

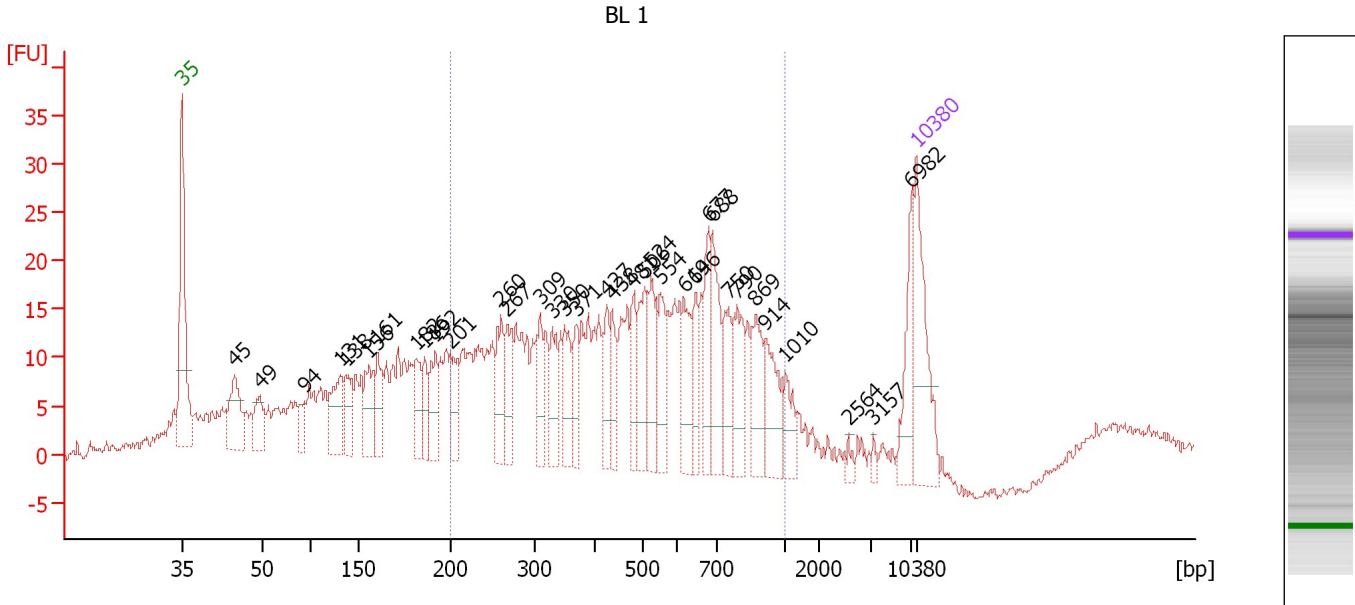
Region table for sample 8 : Blank

From [bp]	Molarity [pmol/l]	Average Size [bp]	Conc. [pg/μl]	To [bp]	Corr. Area	% of Total	Size distribution in CV [%]	Color
200	88.7	577	25.87	1,000	27.4	48	39.2	Blue

Assay Class: High Sensitivity DNA Assay
 Data Path: C:\...ents and Settings\Bioanalyzer\2012-03-01\2012-03-01_006.xad

Created: 3/1/2012 4:15:51 PM
 Modified: 3/1/2012 4:55:07 PM

Electropherogram Summary Continued ...



Overall Results for sample 9 : BL 1

Number of peaks found: 35 Corr. Area 1: 474.5
 Noise: 0.6

Peak table for sample 9 : BL 1

Peak	Size [bp]	Conc. [pg/μl]	Molarity [pmol/l]	Observations
1	35	125.00	5,411.3	Lower Marker
2	45	73.35	2,482.9	
3	49	43.90	1,345.3	
4	94	23.36	376.2	
5	131	64.48	743.6	
6	138	40.29	443.7	
7	156	51.55	501.5	
8	161	43.78	413.0	
9	182	39.37	327.6	
10	186	32.52	264.8	
11	192	47.90	378.4	
12	201	40.62	306.4	
13	260	54.56	318.1	
14	267	43.71	247.6	
15	309	35.29	173.2	
16	330	41.43	190.5	
17	350	42.78	185.0	
18	371	30.49	124.5	
19	427	32.01	113.5	
20	438	30.70	106.1	
21	481	34.20	107.6	
22	506	51.48	154.0	
23	524	49.31	142.6	
24	554	41.98	114.8	
25	619	47.37	115.9	
26	646	30.81	72.2	

Assay Class: High Sensitivity DNA Assay
 Data Path: C:\...ents and Settings\Bioanalyzer\2012-03-01\2012-03-01_006.xad


Created: 3/1/2012 4:15:51 PM
 Modified: 3/1/2012 4:55:07 PM

Electropherogram Summary Continued ...

... Peak table for sample 9 : BL 1

Peak	Size [bp]	Conc. [pg/μl]	Molarity [pmol/l]	Observations
27	677	43.09	96.4	
28	688	61.39	135.1	
29	750	38.74	78.3	
30	790	47.84	91.7	
31	869	46.00	80.2	
32	914	47.97	79.5	
33	1,010	26.56	39.8	
34	2,564	4.81	2.8	
35	3,157	4.17	2.0	
36	6,982	38.61	8.4	
37	10,380	75.00	10.9	Upper Marker

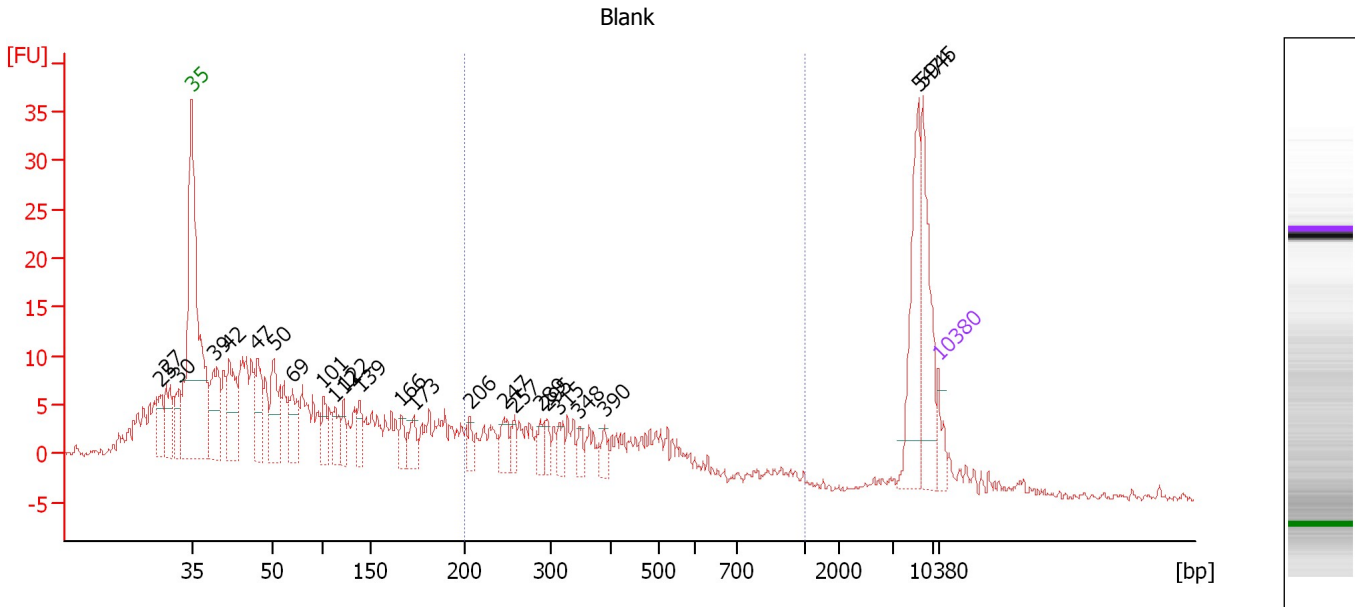
Region table for sample 9 : BL 1

From [bp]	Molarity [pmol/l]	Average Size [bp]	Conc. [pg/μl]	To [bp]	Corr. Area	% of Total	Size distribution in CV [%]	Color
200	4,972.2	508	1,284.69	1,000	474.5	60	41.2	

Assay Class: High Sensitivity DNA Assay
 Data Path: C:\...ents and Settings\Bioanalyzer\2012-03-01\2012-03-01_006.xad

Created: 3/1/2012 4:15:51 PM
 Modified: 3/1/2012 4:55:07 PM

Electropherogram Summary Continued ...



Overall Results for sample 10 : Blank

Number of peaks found: 24 Corr. Area 1: 114.1
 Noise: 0.3

Peak table for sample 10 : Blank

Peak	Size [bp]	Conc. [pg/μl]	Molarity [pmol/l]	Observations
1	25	0.00	0.0	
2	27	0.00	0.0	
3	30	0.00	0.0	
4	35	125.00	5,411.3	Lower Marker
5	39	494.75	19,212.8	
6	42	490.54	17,756.4	
7	47	351.94	11,333.4	
8	50	399.31	11,983.9	
9	69	280.35	6,150.6	
10	101	154.05	2,303.6	
11	112	153.98	2,084.9	
12	122	137.74	1,703.7	
13	139	143.22	1,558.9	
14	166	110.65	1,007.0	
15	173	144.21	1,261.2	
16	206	79.92	587.4	
17	247	135.88	834.3	
18	257	83.21	489.9	
19	289	89.72	471.1	
20	295	79.57	408.1	
21	315	90.36	434.9	
22	348	73.77	321.5	
23	390	69.33	269.1	
24	5,474	450.78	124.8	
25	5,945	408.86	104.2	
26	10,380	75.00	10.9	Upper Marker

Assay Class: High Sensitivity DNA Assay
Data Path: C:\...ents and Settings\Bioanalyzer\2012-03-01\2012-03-01_006.xad

Created: 3/1/2012 4:15:51 PM
Modified: 3/1/2012 4:55:07 PM

Electropherogram Summary Continued ...

... Region table for sample 10 :

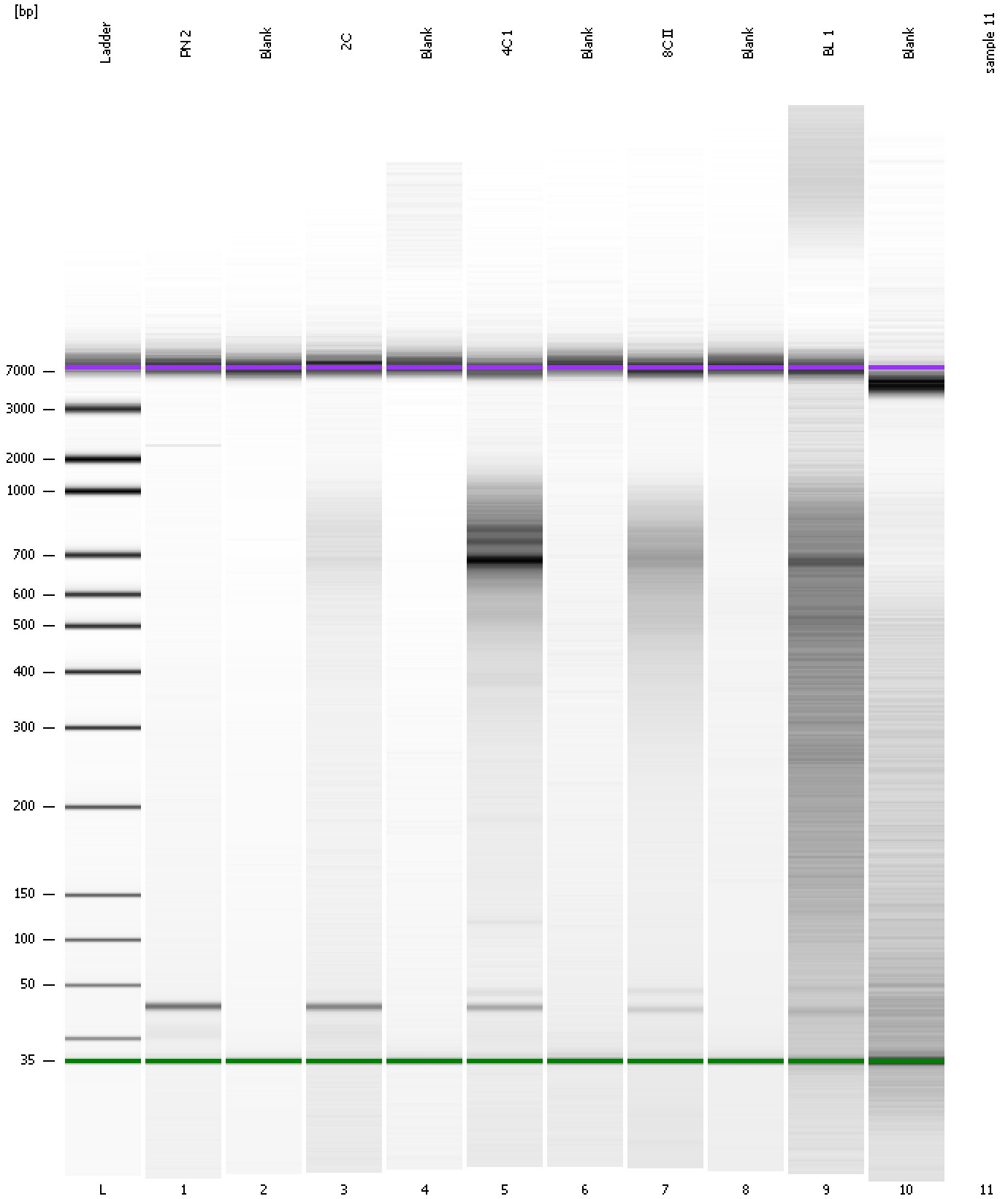
Blank

From [bp]	Molarity [pmol/l]	Average Size [bp]	Conc. [pg/μl]	To [bp]	Corr. Area	% of Total	Size distribution in CV [%]	Color
200	9,370.6	393	2,015.58	1,000	114.1	22	42.0	■

Assay Class: High Sensitivity DNA Assay
Data Path: C:\...ents and Settings\Bioanalyzer\2012-03-01\2012-03-01_006.xad

Created: 3/1/2012 4:15:51 PM
Modified: 3/1/2012 4:55:07 PM

Gel Image

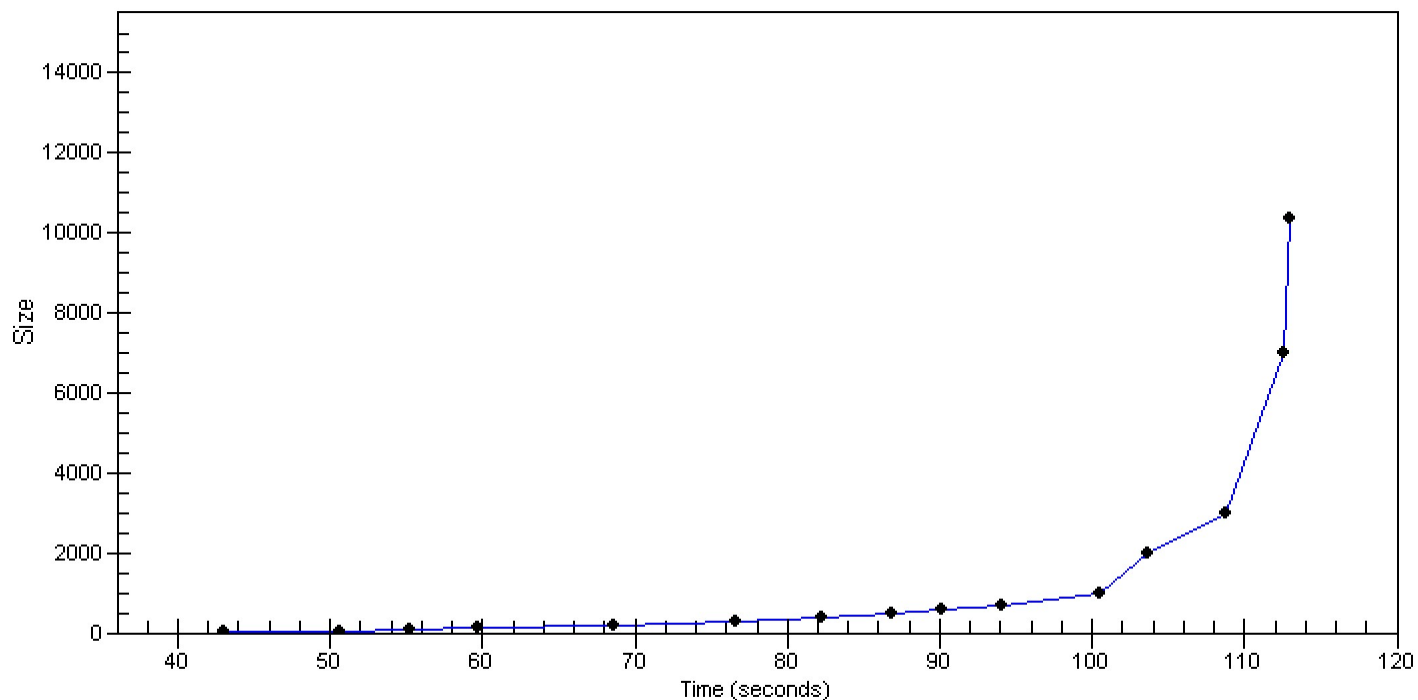


Assay Class: High Sensitivity DNA Assay
Data Path: C:\...ents and Settings\Bioanalyzer\2012-03-01\2012-03-01_006.xad

Created: 3/1/2012 4:15:51 PM
Modified: 3/1/2012 4:55:07 PM

Curves

Standard Curve



Assay Class: High Sensitivity DNA Assay
Data Path: C:\...ents and Settings\Bioanalyzer\2012-03-01\2012-03-01_006.xad

Created: 3/1/2012 4:15:51 PM
Modified: 3/1/2012 4:55:07 PM

Invalid Samples

Sample 11 has not been run, no results available.

Assay Class: High Sensitivity DNA Assay
 Data Path: C:\...ents and Settings\Bioanalyzer\2012-03-01\2012-03-01_006.xad

Created: 3/1/2012 4:15:51 PM
 Modified: 3/1/2012 4:55:07 PM

Run Logbook

Description	Number	Source	Category	Sub Category	Time	Time Zone	User	Host
Run aborted on port 1		Instrument	Run		3/1/2012 4:54:25 PM	(GMT --08:00) Pacific Standard Time	UC Davis	D8XSMGH1
Run started on port 1 (File: C:\Documents and Settings\Bioanalyzer\2012-03-01\2012-03-01_006.xad)		Instrument	Run		3/1/2012 4:15:57 PM	(GMT --08:00) Pacific Standard Time	UC Davis	D8XSMGH1
Product Number : G2938B		Instrument	Run		3/1/2012 4:15:57 PM	(GMT --08:00) Pacific Standard Time	UC Davis	D8XSMGH1
Name :		Instrument	Run		3/1/2012 4:15:57 PM	(GMT --08:00) Pacific Standard Time	UC Davis	D8XSMGH1
Vendor : Agilent Technologies		Instrument	Run		3/1/2012 4:15:57 PM	(GMT --08:00) Pacific Standard Time	UC Davis	D8XSMGH1
Serial# : DE13701086		Instrument	Run		3/1/2012 4:15:56 PM	(GMT --08:00) Pacific Standard Time	UC Davis	D8XSMGH1
Firmware : C.01.069		Instrument	Run		3/1/2012 4:15:56 PM	(GMT --08:00) Pacific Standard Time	UC Davis	D8XSMGH1
Cartridge : Electrode		Instrument	Run		3/1/2012 4:15:56 PM	(GMT --08:00) Pacific Standard Time	UC Davis	D8XSMGH1