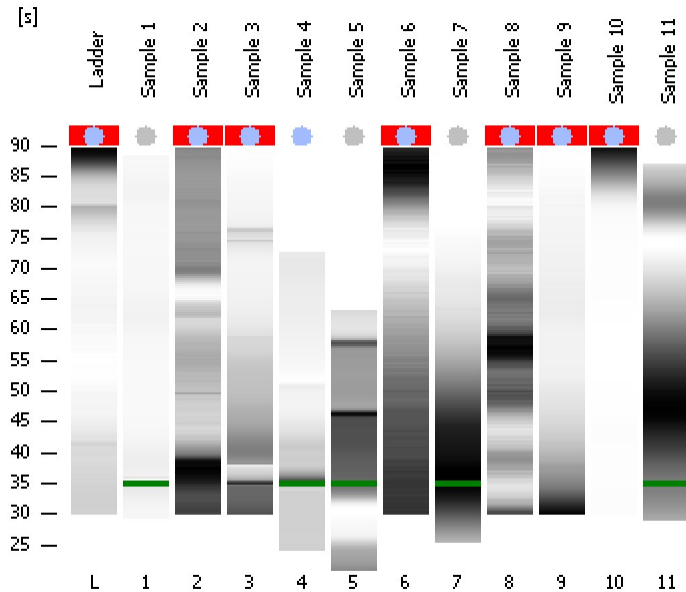


Assay Class: Small RNA
Data Path: C:\...ents and Settings\Bioanalyzer\2012-03-02\2012-03-02_003.xad

Created: 3/2/2012 10:03:34 AM
Modified: 3/2/2012 10:35:31 AM

Electrophoresis File Run Summary



Instrument Information:

Instrument Name: DE13701086 Firmware: C.01.069
Serial#: DE13701086 Type: G2938B

Assay Information:

Assay Origin Path: C:\Program Files\Agilent\2100 bioanalyzer\2100 expert\assays\RNA\Small RNA Series II.xsy

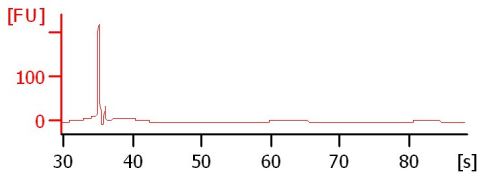
Assay Class: Small RNA
Version: 1.2
Assay Comments: Small RNA Analysis 6 - 150 nucleotides

© Copyright 2007 - 2009 Agilent Technologies, Inc.

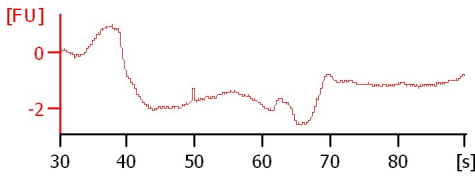
Chip Information:

Chip Lot #:
Reagent Kit Lot #:
Chip Comments:

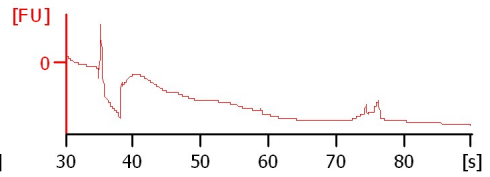
Sample 1
Number of Peaks: 3



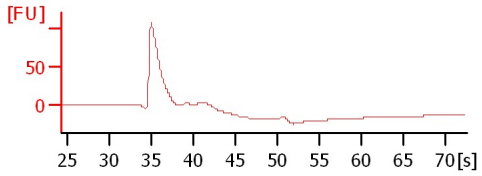
Sample 2
All Other Samples



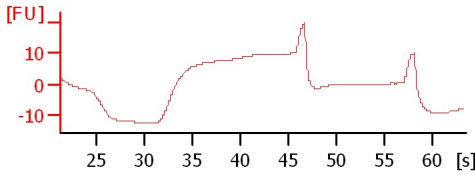
Sample 3
All Other Samples



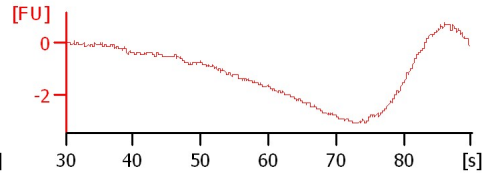
Sample 4
All Other Samples



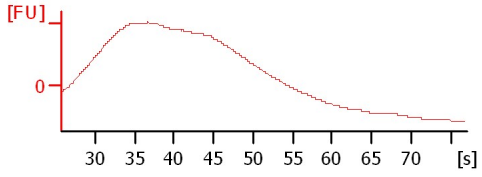
Sample 5
Number of Peaks: 13



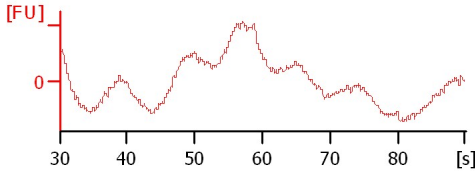
Sample 6
All Other Samples



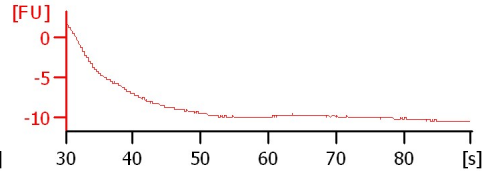
Sample 7
Number of Peaks: 3



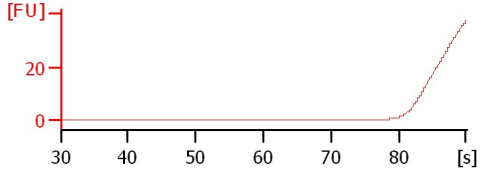
Sample 8
All Other Samples



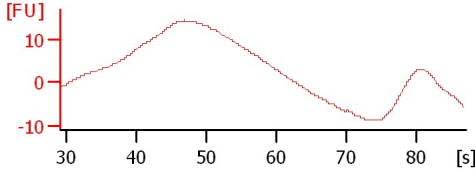
Sample 9
All Other Samples



Sample 10
All Other Samples



Sample 11
Number of Peaks: 10



Assay Class: Small RNA
 Data Path: C:\...ents and Settings\Bioanalyzer\2012-03-02\2012-03-02_003.xad

Created: 3/2/2012 10:03:34 AM
 Modified: 3/2/2012 10:35:31 AM

Electrophoresis File Run Summary (Chip Summary)

Sample Name	Sample Comment	Status	Result Label	Result Color
Sample 1		✓	Number of Peaks: 3	Grey
Sample 2		✓	All Other Samples	Blue
Sample 3		✓	All Other Samples	Blue
Sample 4		✓	All Other Samples	Blue
Sample 5		✓	Number of Peaks: 13	Grey
Sample 6		✓	All Other Samples	Blue
Sample 7		✓	Number of Peaks: 3	Grey
Sample 8		✓	All Other Samples	Blue
Sample 9		✓	All Other Samples	Blue
Sample 10		✓	All Other Samples	Blue
Sample 11		✓	Number of Peaks: 10	Grey
Ladder		✓	All Other Samples	Blue

Chip Lot #

Reagent Kit Lot #

Chip Comments :

Assay Class: Small RNA
Data Path: C:\...ents and Settings\Bioanalyzer\2012-03-02\2012-03-02_003.xad

Created: 3/2/2012 10:03:34 AM
Modified: 3/2/2012 10:35:31 AM

Electrophoresis Assay Details

General Analysis Settings

Number of Available Sample and Ladder Wells (Max.) : 12

Minimum Visible Range [s] : 30

Maximum Visible Range [s] : 90

Start Analysis Time Range [s] : 31

End Analysis Time Range [s] : 89

Ladder Concentration [pg/ μ l] : 2500

Lower Marker Concentration [pg/ μ l] : 500

Upper Marker Concentration [pg/ μ l] : 0

Used Lower Marker for Quantitation

Standard Curve Fit is Logarithmic

Show Data Aligned to Lower Marker

Integrator Settings

Integration Start Time [s] : 30

Integration End Time [s] : 89

Slope Threshold : 0.6

Height Threshold [FU] : 3

Area Threshold : 0.2

Width Threshold [s] : 0.5

Baseline Plateau [s] : 60

Filter Settings

Filter Width [s] : 0.5

Polynomial Order : 4

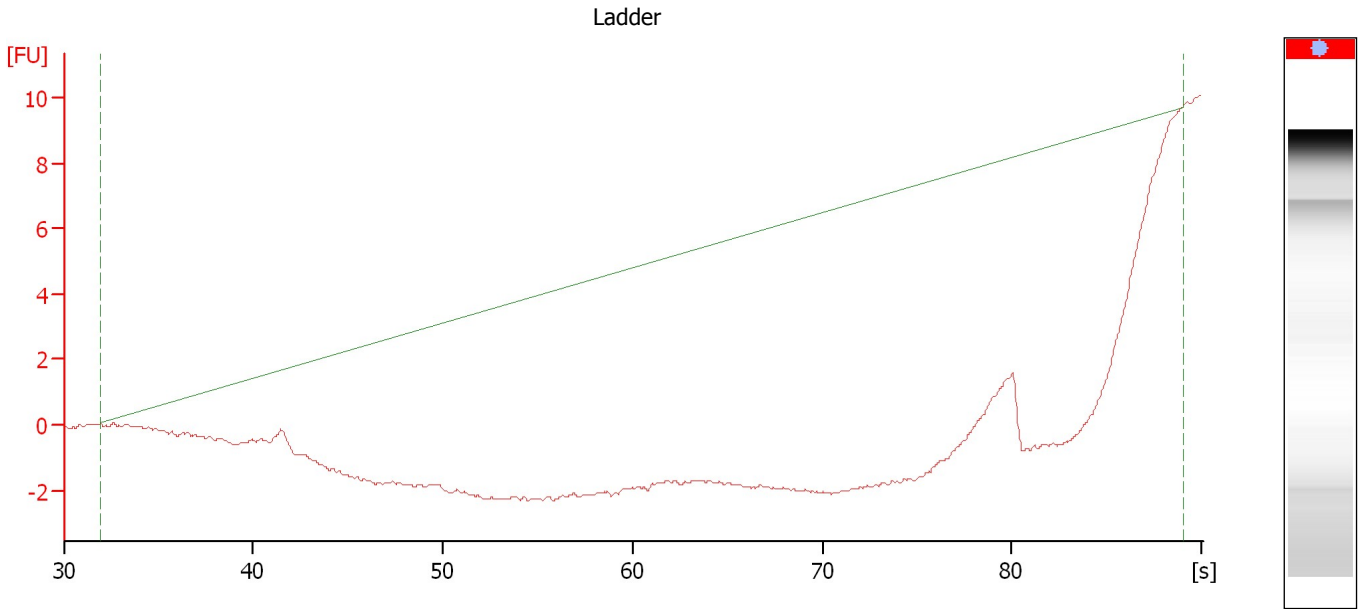
Ladder

Ladder Peak	Size
1	4
2	20
3	40
4	60
5	80
6	100
7	150

Assay Class: Small RNA
Data Path: C:\...ents and Settings\Bioanalyzer\2012-03-02\2012-03-02_003.xad

Created: 3/2/2012 10:03:34 AM
Modified: 3/2/2012 10:35:31 AM

Electropherogram Summary



Overall Results for Ladder

Result Flagging Color:

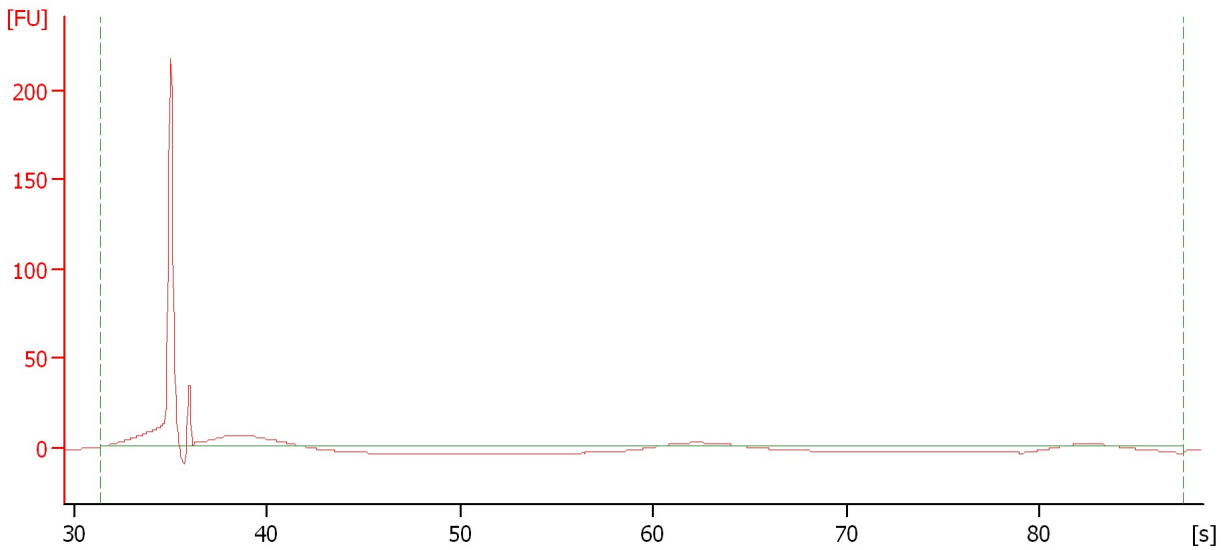
Result Flagging Label: All Other Samples

Assay Class: Small RNA
 Data Path: C:\...ents and Settings\Bioanalyzer\2012-03-02\2012-03-02_003.xad

Created: 3/2/2012 10:03:34 AM
 Modified: 3/2/2012 10:35:31 AM

Electropherogram Summary Continued ...

Sample 1



Overall Results for sample 1 : Sample 1

Result Flagging Color: Result Flagging Label: Number of Peaks: 3

Region table for sample 1 : Sample 1

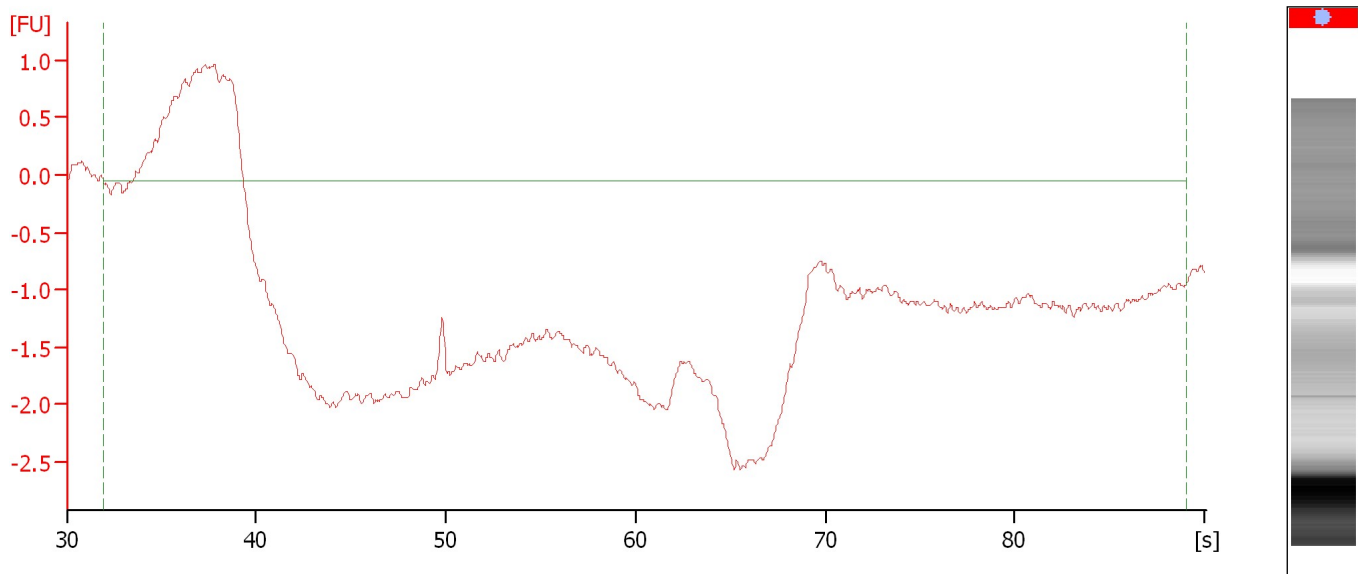
Name	From [nt]	To [nt]	Average Size [nt]	Size distribution in CV [%]	Conc. [pg/μl]	% of Total	Color
Small RNA	-1	-1	0	0.0	0.0	-1	or

Assay Class: Small RNA
Data Path: C:\...ents and Settings\Bioanalyzer\2012-03-02\2012-03-02_003.xad

Created: 3/2/2012 10:03:34 AM
Modified: 3/2/2012 10:35:31 AM

Electropherogram Summary Continued ...

Sample 2



Overall Results for sample 2 : Sample 2

Result Flagging Color:

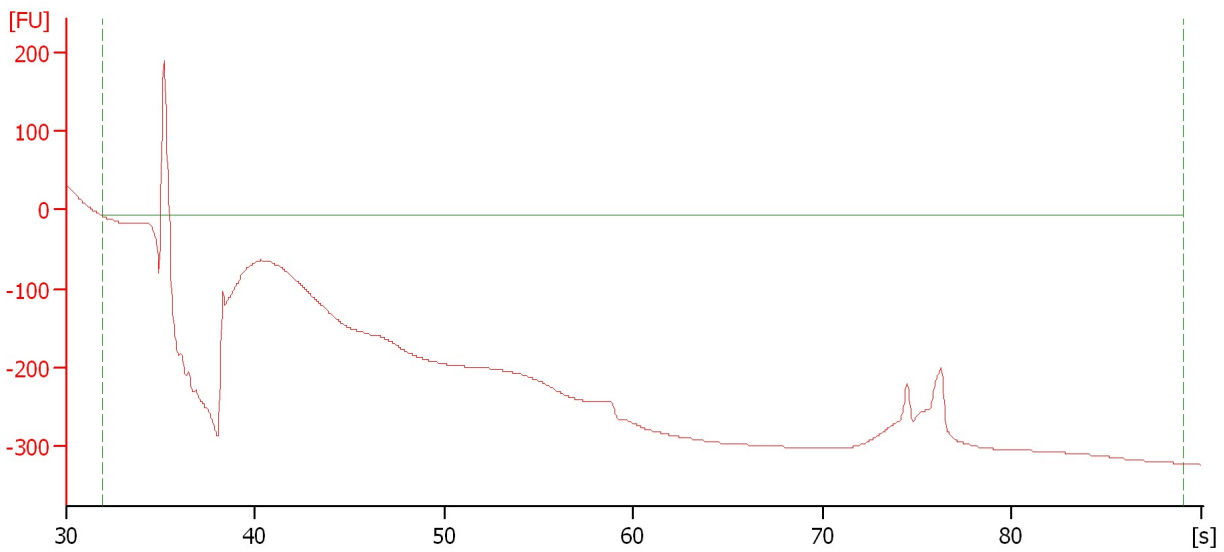
Result Flagging Label: All Other Samples

Assay Class: Small RNA
Data Path: C:\...ents and Settings\Bioanalyzer\2012-03-02\2012-03-02_003.xad

Created: 3/2/2012 10:03:34 AM
Modified: 3/2/2012 10:35:31 AM

Electropherogram Summary Continued ...

Sample 3



Overall Results for sample 3 : Sample 3

Result Flagging Color:

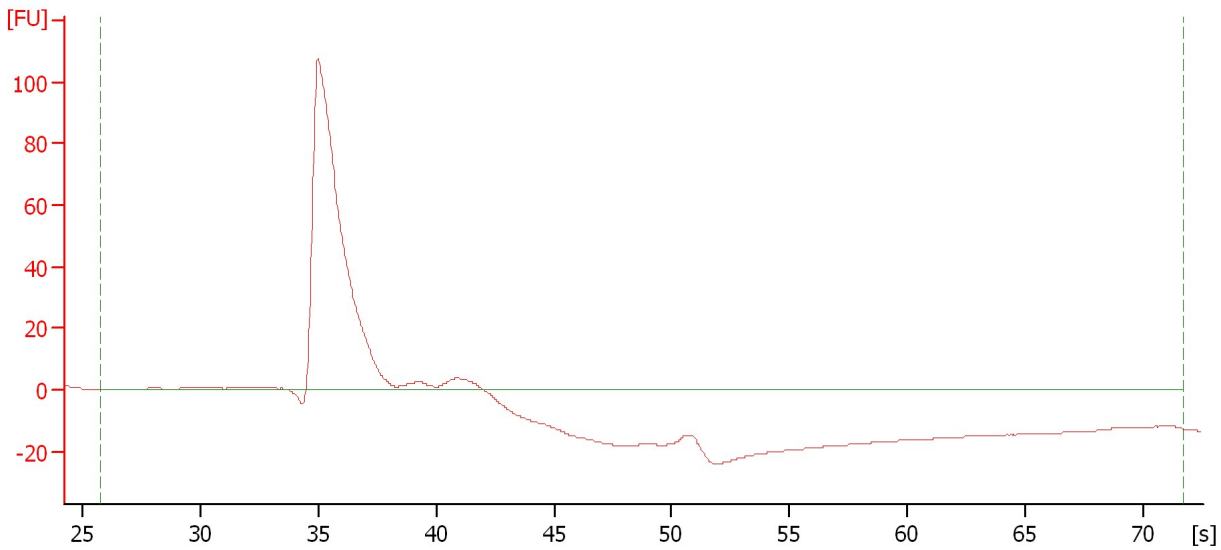
Result Flagging Label: All Other Samples

Assay Class: Small RNA
Data Path: C:\...ents and Settings\Bioanalyzer\2012-03-02\2012-03-02_003.xad

Created: 3/2/2012 10:03:34 AM
Modified: 3/2/2012 10:35:31 AM

Electropherogram Summary Continued ...

Sample 4



Overall Results for sample 4 : Sample 4

Result Flagging Color: Result Flagging Label: All Other Samples

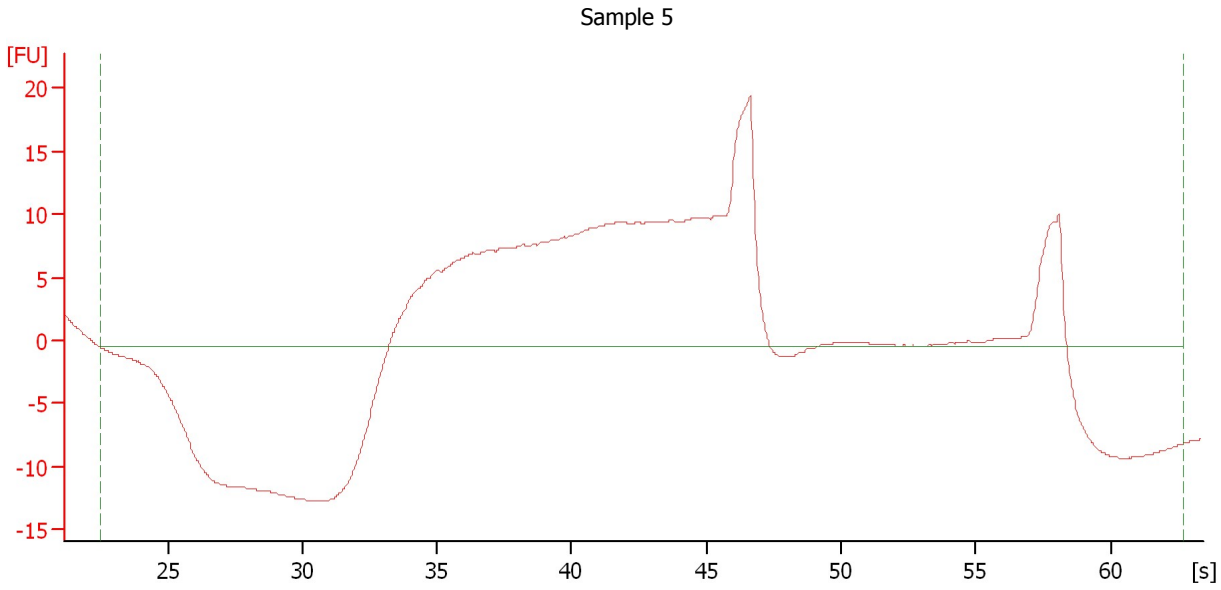
Region table for sample 4 : Sample 4

Name	From [nt]	To [nt]	Average Size [nt]	Size distribution in CV [%]	Conc. [pg/μl]	% of Total	Color
Small RNA	-1	-1	0	0.0	0.0	-1	

Assay Class: Small RNA
 Data Path: C:\...ents and Settings\Bioanalyzer\2012-03-02\2012-03-02_003.xad

Created: 3/2/2012 10:03:34 AM
 Modified: 3/2/2012 10:35:31 AM

Electropherogram Summary Continued ...



Overall Results for sample 5 : Sample 5

Result Flagging Color: Result Flagging Label: Number of Peaks: 13

Region table for sample 5 : Sample 5

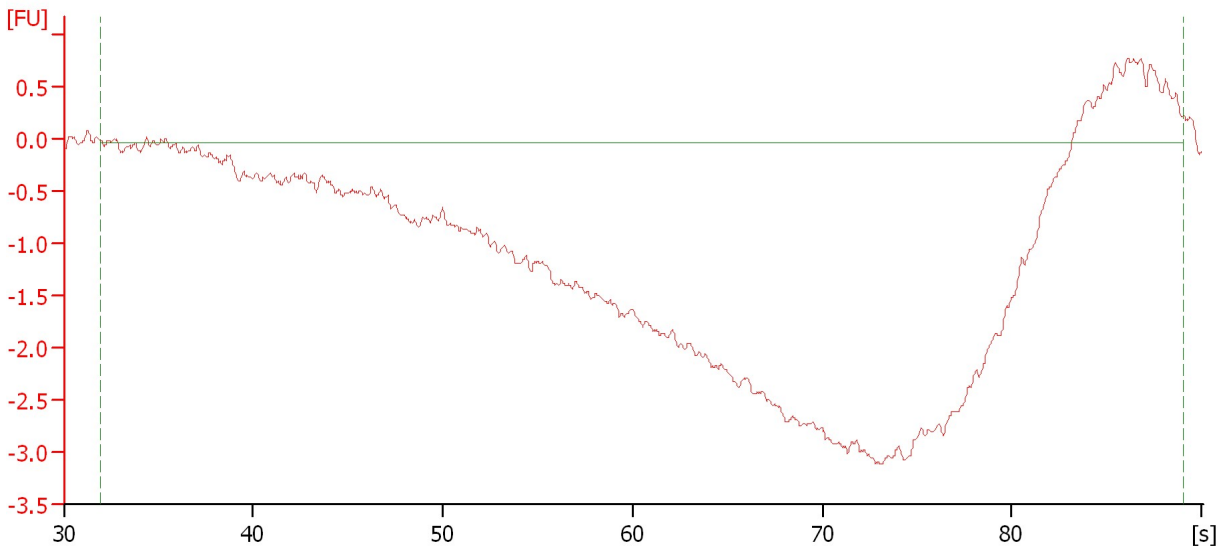
Name	From [nt]	To [nt]	Average Size [nt]	Size distribution in CV [%]	Conc. [pg/μl]	% of Total	Color
Small RNA	-1	-1	0	0.0	0.0	-1	

Assay Class: Small RNA
Data Path: C:\...ents and Settings\Bioanalyzer\2012-03-02\2012-03-02_003.xad

Created: 3/2/2012 10:03:34 AM
Modified: 3/2/2012 10:35:31 AM

Electropherogram Summary Continued ...

Sample 6



Overall Results for sample 6 : Sample 6

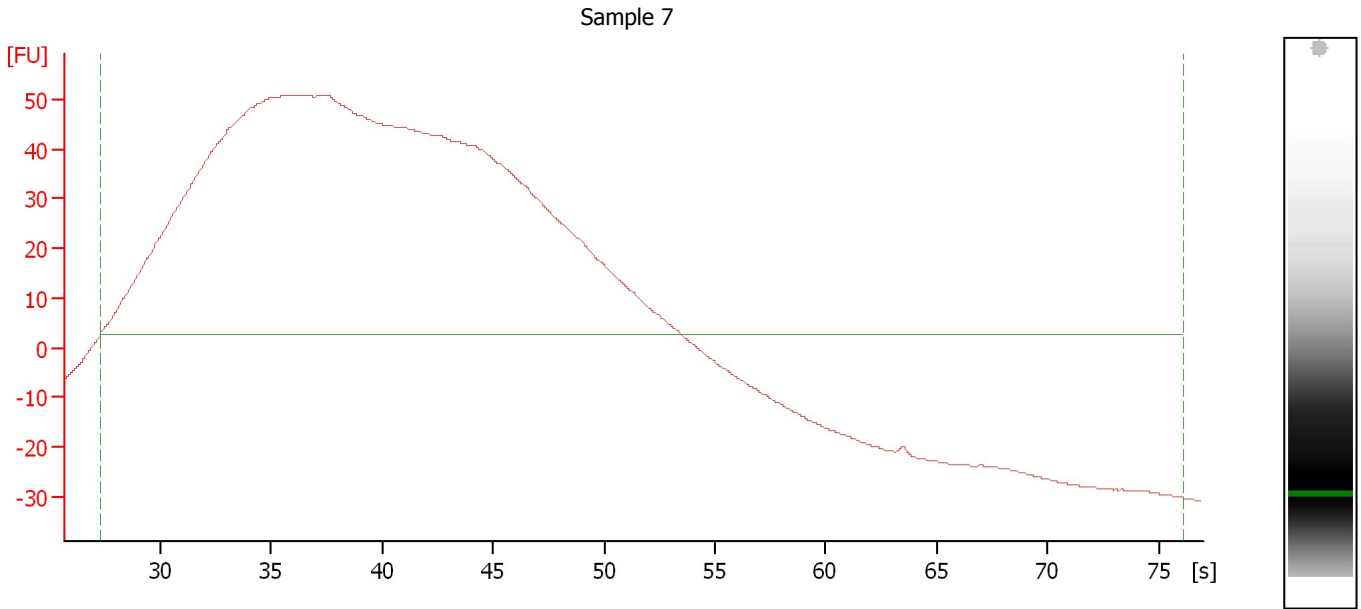
Result Flagging Color:

Result Flagging Label: All Other Samples

Assay Class: Small RNA
 Data Path: C:\...ents and Settings\Bioanalyzer\2012-03-02\2012-03-02_003.xad

Created: 3/2/2012 10:03:34 AM
 Modified: 3/2/2012 10:35:31 AM

Electropherogram Summary Continued ...



Overall Results for sample 7 : Sample 7

Result Flagging Color: Result Flagging Label: Number of Peaks: 3

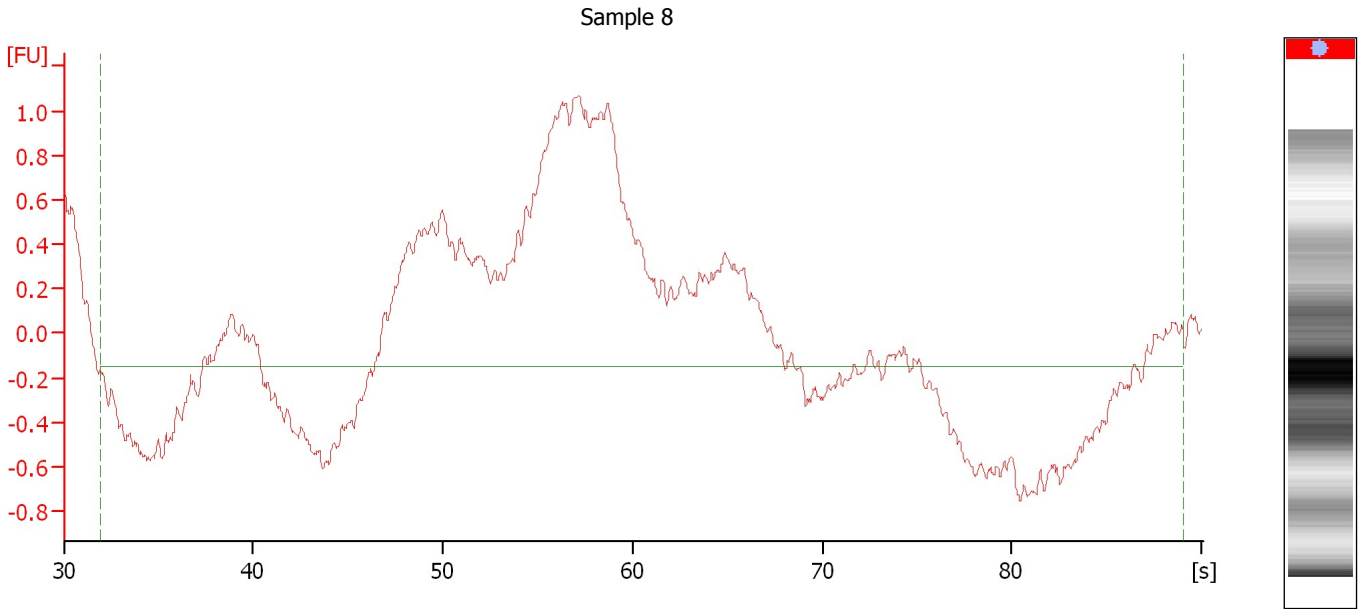
Region table for sample 7 : Sample 7

Name	From [nt]	To [nt]	Average Size [nt]	Size distribution in CV [%]	Conc. [pg/μl]	% of Total	Color
Small RNA	-1	-1	0	0.0	0.0	-1	

Assay Class: Small RNA
Data Path: C:\...ents and Settings\Bioanalyzer\2012-03-02\2012-03-02_003.xad

Created: 3/2/2012 10:03:34 AM
Modified: 3/2/2012 10:35:31 AM

Electropherogram Summary Continued ...



Overall Results for sample 8 : Sample 8

Result Flagging Color:

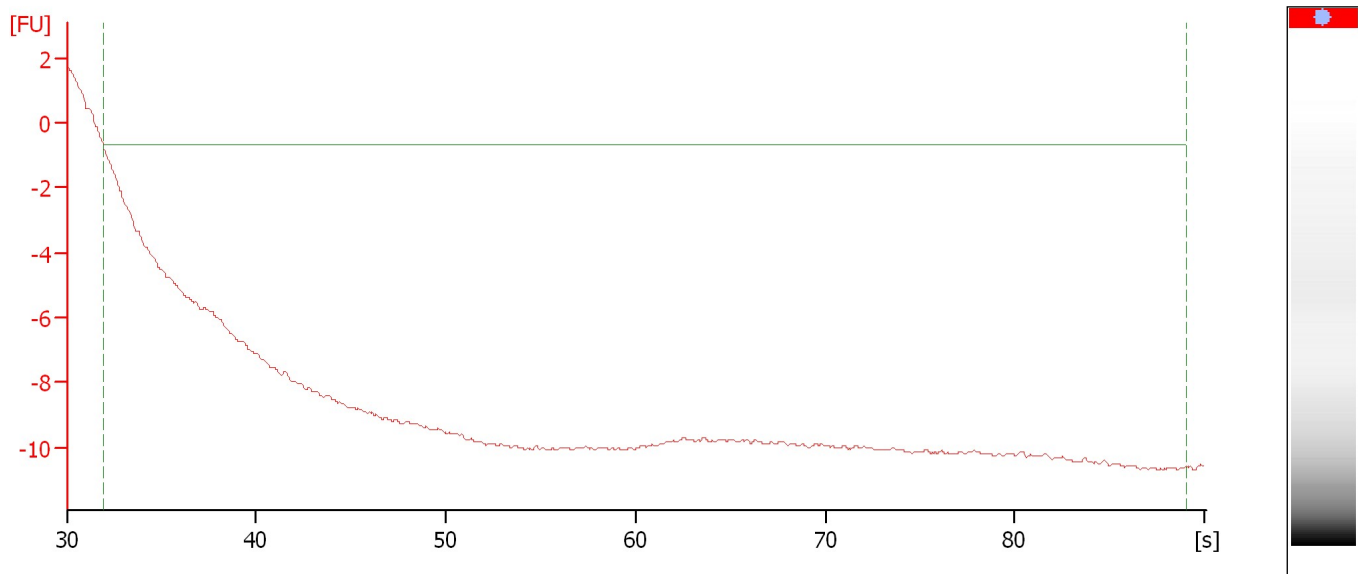
Result Flagging Label: All Other Samples

Assay Class: Small RNA
Data Path: C:\...ents and Settings\Bioanalyzer\2012-03-02\2012-03-02_003.xad

Created: 3/2/2012 10:03:34 AM
Modified: 3/2/2012 10:35:31 AM

Electropherogram Summary Continued ...

Sample 9



Overall Results for sample 9 : Sample 9

Result Flagging Color:

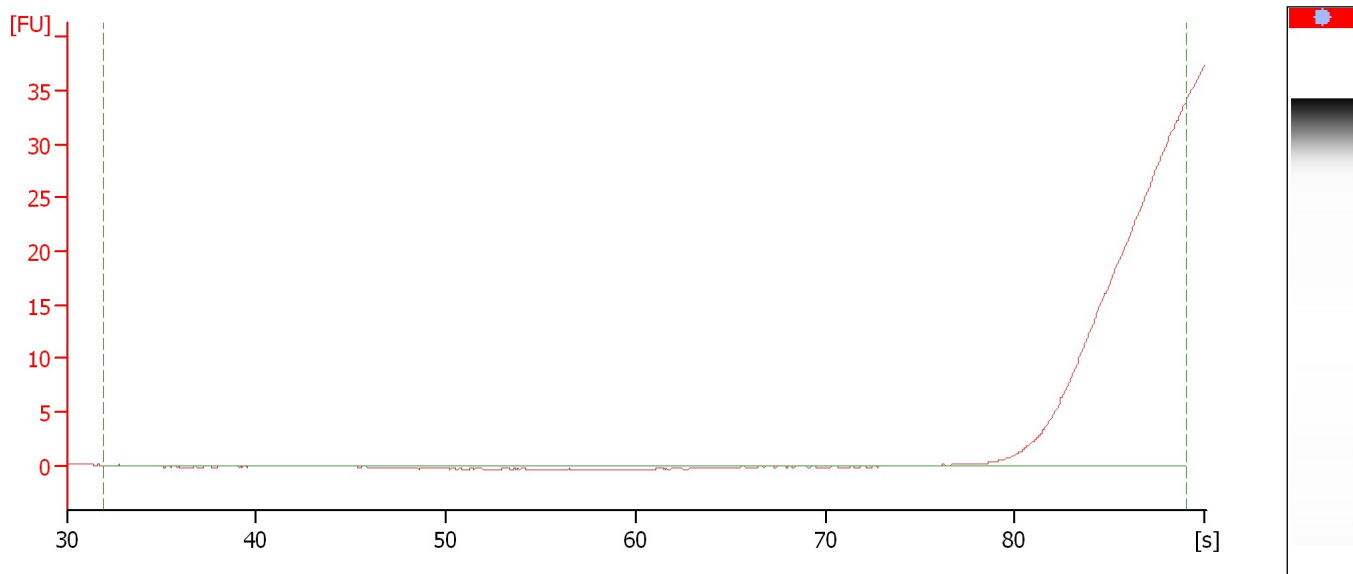
Result Flagging Label: All Other Samples

Assay Class: Small RNA
Data Path: C:\...ents and Settings\Bioanalyzer\2012-03-02\2012-03-02_003.xad

Created: 3/2/2012 10:03:34 AM
Modified: 3/2/2012 10:35:31 AM

Electropherogram Summary Continued ...

Sample 10



Overall Results for sample 10 : Sample 10

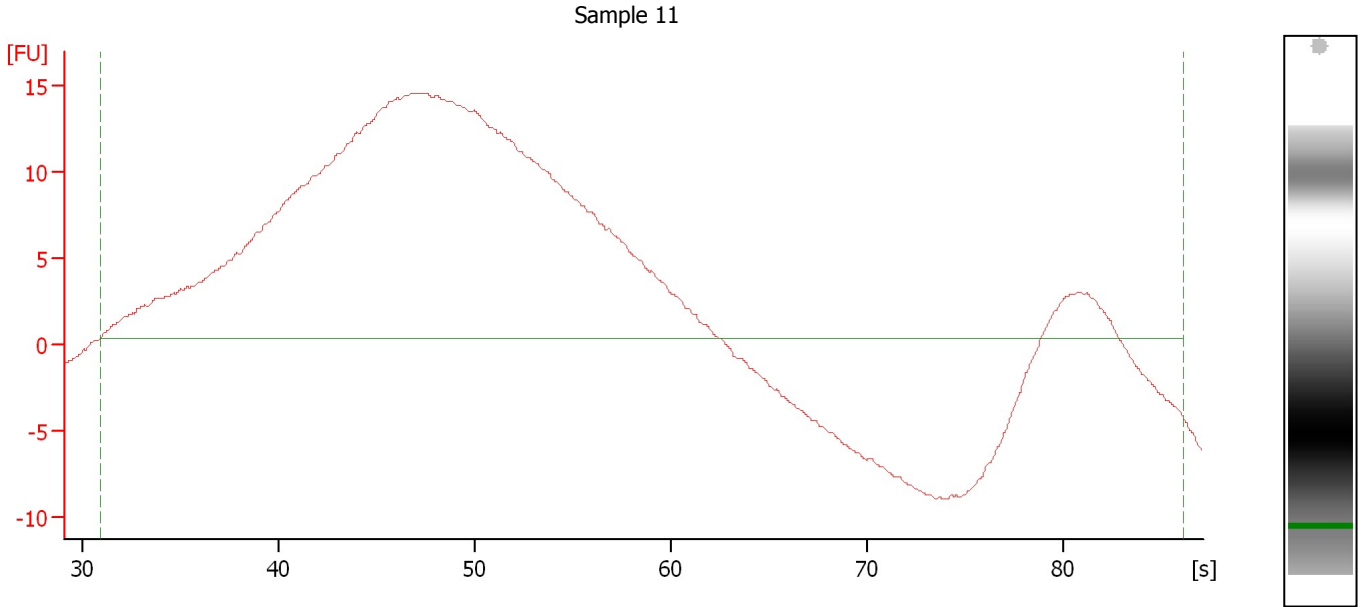
Result Flagging Color:

Result Flagging Label: All Other Samples

Assay Class: Small RNA
 Data Path: C:\...ents and Settings\Bioanalyzer\2012-03-02\2012-03-02_003.xad

Created: 3/2/2012 10:03:34 AM
 Modified: 3/2/2012 10:35:31 AM

Electropherogram Summary Continued ...



Overall Results for sample 11 : Sample 11

Result Flagging Color: Result Flagging Label: Number of Peaks: 10

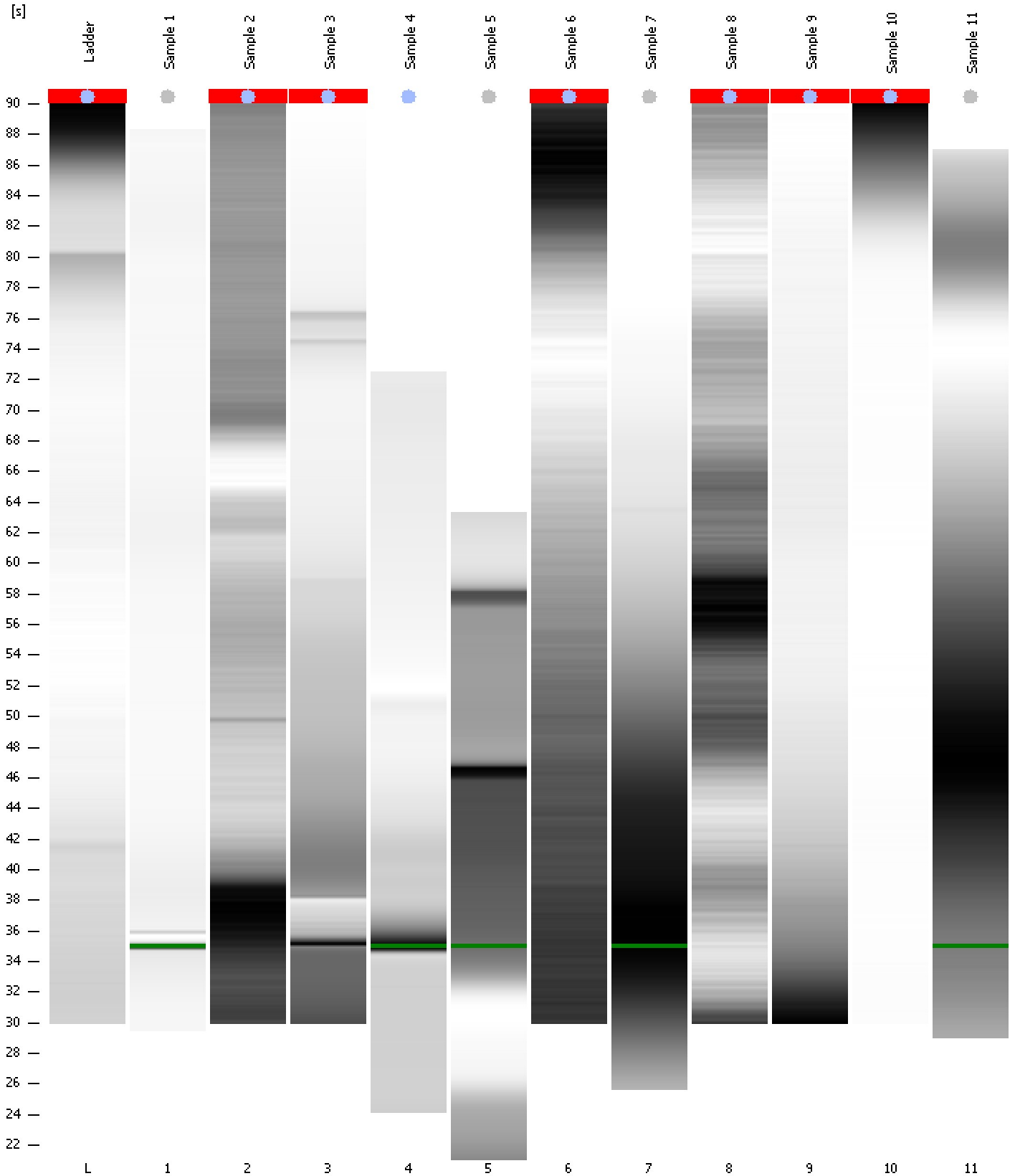
Region table for sample 11 : Sample 11

Name	From [nt]	To [nt]	Average Size [nt]	Size distribution in CV [%]	Conc. [pg/μl]	% of Total	Color
Small RNA	-1	-1	0	0.0	0.0	-1	

Assay Class: Small RNA
Data Path: C:\...ents and Settings\Bioanalyzer\2012-03-02\2012-03-02_003.xad

Created: 3/2/2012 10:03:34 AM
Modified: 3/2/2012 10:35:31 AM

Gel Image

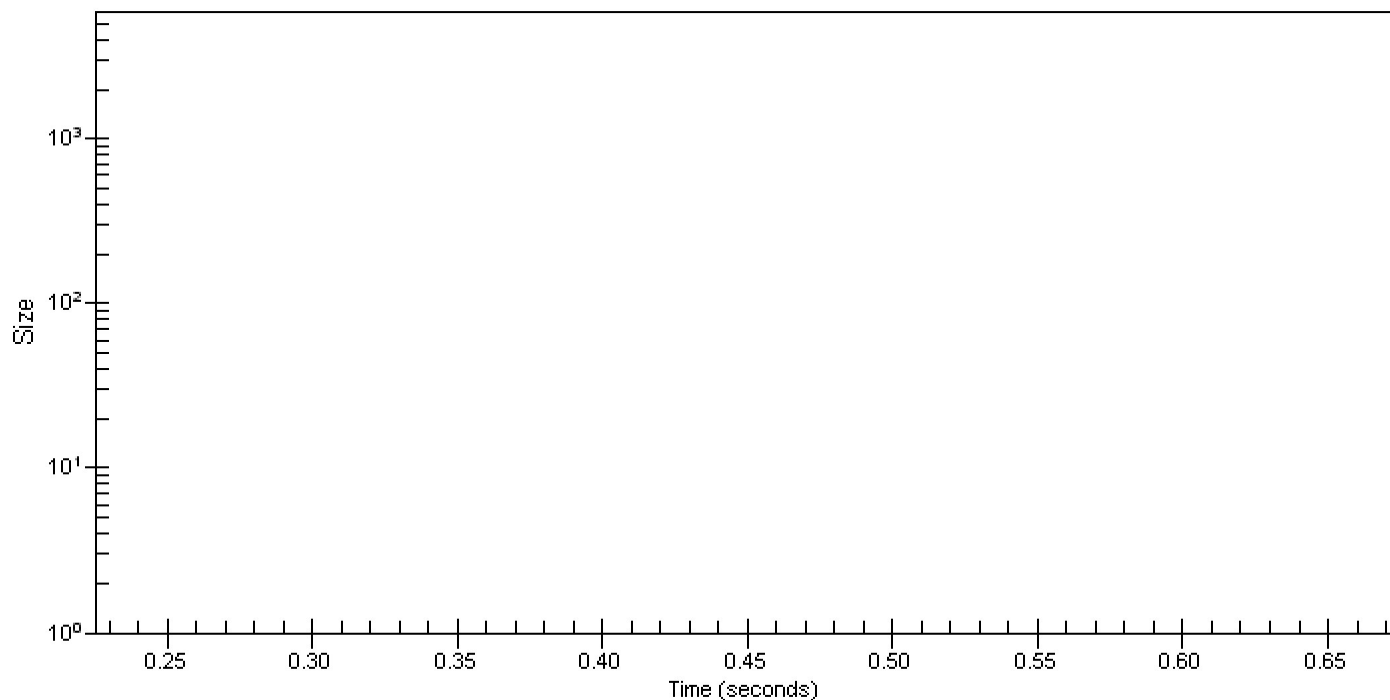


Assay Class: Small RNA
Data Path: C:\...ents and Settings\Bioanalyzer\2012-03-02\2012-03-02_003.xad

Created: 3/2/2012 10:03:34 AM
Modified: 3/2/2012 10:35:31 AM

Curves

Standard Curve



Assay Class: Small RNA
 Data Path: C:\...ents and Settings\Bioanalyzer\2012-03-02\2012-03-02_003.xad

Created: 3/2/2012 10:03:34 AM
 Modified: 3/2/2012 10:35:31 AM

Run Logbook

Description	Number	Source	Category	Sub Category	Time	Time Zone	User	Host
Run ended on port 1 (Number of wells acquired: 12)		Instrument	Run		3/2/2012 10:35:28 AM	(GMT --08:00) Pacific Standard Time	UC Davis	D8XSMGH1
Run started on port 1 (File: C:\Documents and Settings\Bioanalyzer\2012-03-02\2012-03-02_003.xad)		Instrument	Run		3/2/2012 10:03:35 AM	(GMT --08:00) Pacific Standard Time	UC Davis	D8XSMGH1
Product Number : G2938B		Instrument	Run		3/2/2012 10:03:35 AM	(GMT --08:00) Pacific Standard Time	UC Davis	D8XSMGH1
Name :		Instrument	Run		3/2/2012 10:03:35 AM	(GMT --08:00) Pacific Standard Time	UC Davis	D8XSMGH1
Vendor : Agilent Technologies		Instrument	Run		3/2/2012 10:03:35 AM	(GMT --08:00) Pacific Standard Time	UC Davis	D8XSMGH1
Serial# : DE13701086		Instrument	Run		3/2/2012 10:03:35 AM	(GMT --08:00) Pacific Standard Time	UC Davis	D8XSMGH1
Firmware : C.01.069		Instrument	Run		3/2/2012 10:03:35 AM	(GMT --08:00) Pacific Standard Time	UC Davis	D8XSMGH1
Cartridge : Electrode		Instrument	Run		3/2/2012 10:03:35 AM	(GMT --08:00) Pacific Standard Time	UC Davis	D8XSMGH1