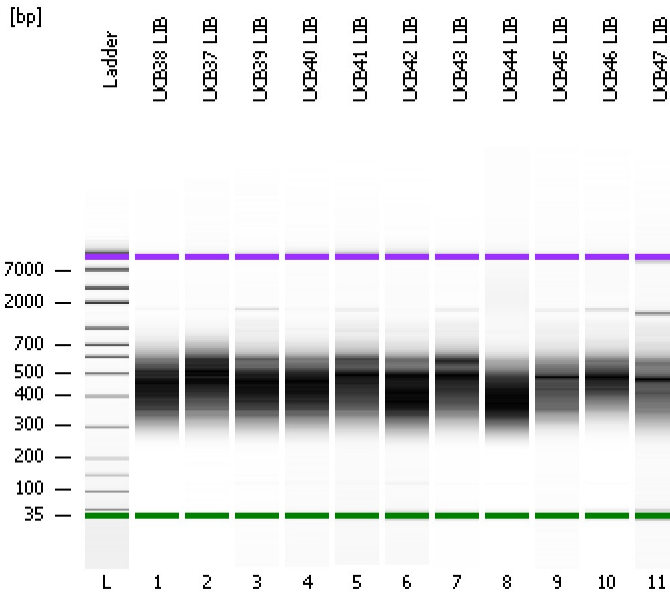


Assay Class: High Sensitivity DNA Assay
Data Path: C:\...ents and Settings\Bioanalyzer\2012-03-02\2012-03-02_004.xad

Created: 3/2/2012 10:57:04 AM
Modified: 3/2/2012 11:43:47 AM

Electrophoresis File Run Summary



Instrument Information:

Instrument Name: DE13701086 Firmware: C.01.069
Serial#: DE13701086 Type: G2938B

Assay Information:

Assay Origin Path: C:\Program Files\Agilent\2100 bioanalyzer\2100 expert\assays\dsDNA\High Sensitivity DNA.xsy
Assay Class: High Sensitivity DNA Assay
Version: 1.03
Assay Comments: Copyright © 2003-2010 Agilent Technologies

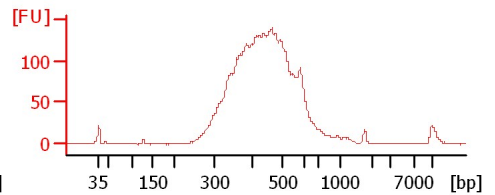
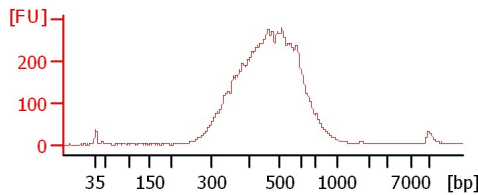
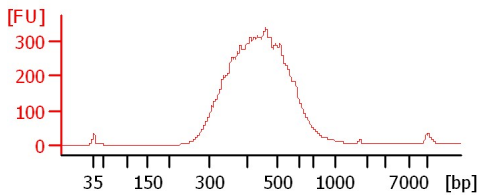
Chip Information:

Chip Lot #:
Reagent Kit Lot #:
Chip Comments:

UCB38 LIB

UCB37 LIB

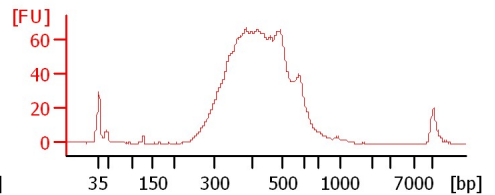
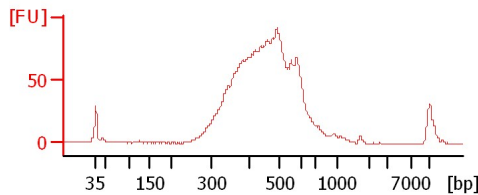
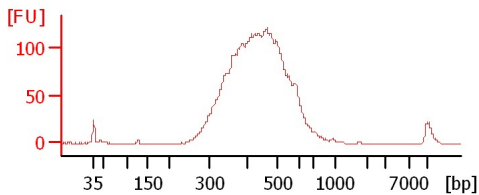
UCB39 LIB



UCB40 LIB

UCB41 LIB

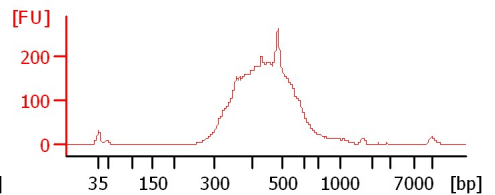
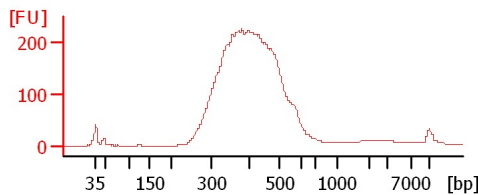
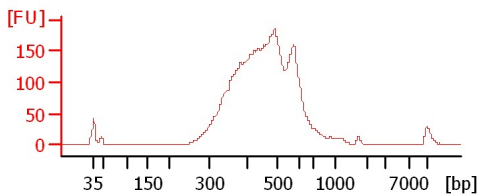
UCB42 LIB



UCB43 LIB

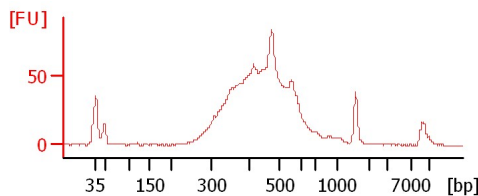
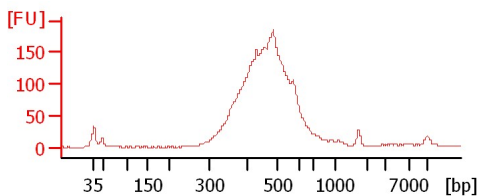
UCB44 LIB

UCB45 LIB



UCB46 LIB

UCB47 LIB



Assay Class: High Sensitivity DNA Assay
 Data Path: C:\...ents and Settings\Bioanalyzer\2012-03-02\2012-03-02_004.xad

Created: 3/2/2012 10:57:04 AM
 Modified: 3/2/2012 11:43:47 AM

Electrophoresis File Run Summary (Chip Summary)

Sample Name	Sample Comment	Rest. Digest	Status	Observation	Result Label	Result Color
UCB38 LIB		<input type="checkbox"/>	✓			
UCB37 LIB		<input type="checkbox"/>	✓			
UCB39 LIB		<input type="checkbox"/>	✓			
UCB40 LIB		<input type="checkbox"/>	✓			
UCB41 LIB		<input type="checkbox"/>	✓			
UCB42 LIB		<input type="checkbox"/>	✓			
UCB43 LIB		<input type="checkbox"/>	✓			
UCB44 LIB		<input type="checkbox"/>	✓			
UCB45 LIB		<input type="checkbox"/>	✓			
UCB46 LIB		<input type="checkbox"/>	✓			
UCB47 LIB		<input type="checkbox"/>	✓			
Ladder		<input type="checkbox"/>	✓			

Chip Lot #

Reagent Kit Lot #

Chip Comments :

Assay Class: High Sensitivity DNA Assay
Data Path: C:\...ents and Settings\Bioanalyzer\2012-03-02\2012-03-02_004.xad

Created: 3/2/2012 10:57:04 AM
Modified: 3/2/2012 11:43:47 AM

Electrophoresis Assay Details

General Analysis Settings

Number of Available Sample and Ladder Wells (Max.) : 12
Minimum Visible Range [s] : 32
Maximum Visible Range [s] : 138
Start Analysis Time Range [s] : 33
End Analysis Time Range [s] : 137.5
Ladder Concentration [pg/μl] : 1950
Uses Standard Area for Ladder Fragments
Lower Marker Concentration [pg/μl] : 125
Upper Marker Concentration [pg/μl] : 75
Used Upper Marker for Quantitation
Standard Curve Fit is Point to Point
Show Data Aligned to Lower and Upper Marker

Integrator Settings

Integration Start Time [s] : 33.05
Integration End Time [s] : 137
Slope Threshold : 0.8
Height Threshold [FU] : 5
Area Threshold : 0.1
Width Threshold [s] : 0.6
Baseline Plateau [s] : 0.5

Filter Settings

Filter Width [s] : 0.5
Polynomial Order : 4

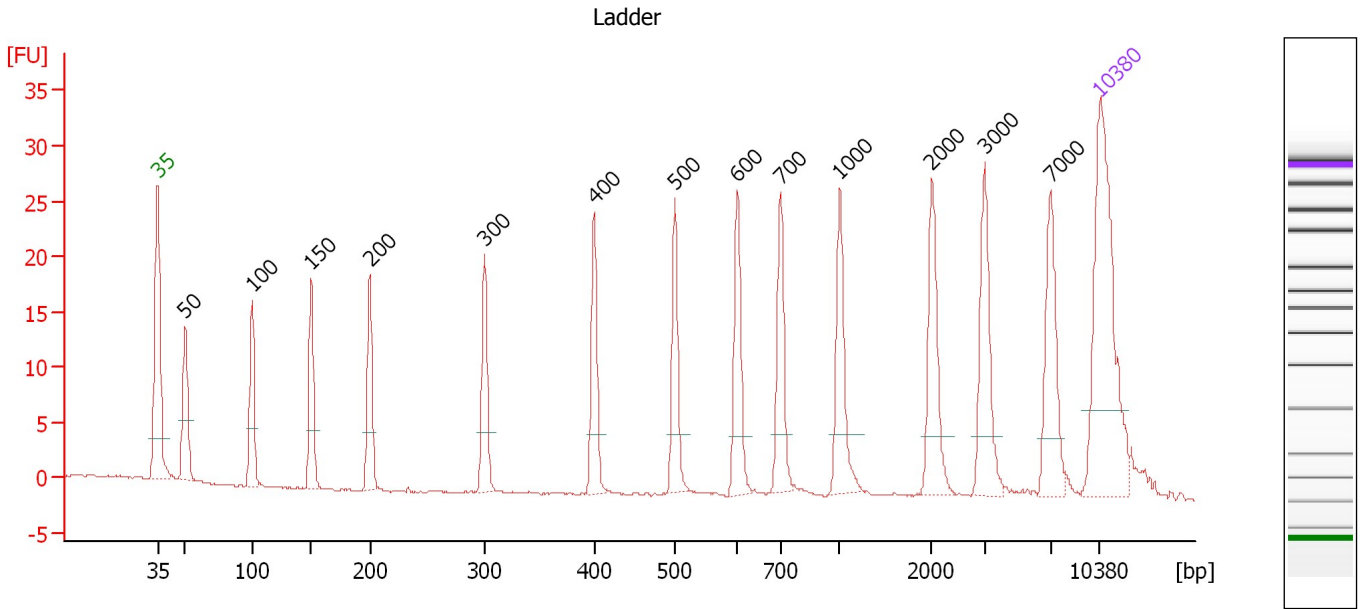
Ladder

Ladder Peak	Size	Area
1	35	160
2	50	210
3	100	208
4	150	221
5	200	242
6	300	270
7	400	305
8	500	306
9	600	336
10	700	321
11	1000	366
12	2000	413
13	3000	411
14	7000	400
15	10380	214

Assay Class: High Sensitivity DNA Assay
 Data Path: C:\...ents and Settings\Bioanalyzer\2012-03-02\2012-03-02_004.xad

Created: 3/2/2012 10:57:04 AM
 Modified: 3/2/2012 11:43:47 AM

Electropherogram Summary



Overall Results for Ladder

Noise: 0.1

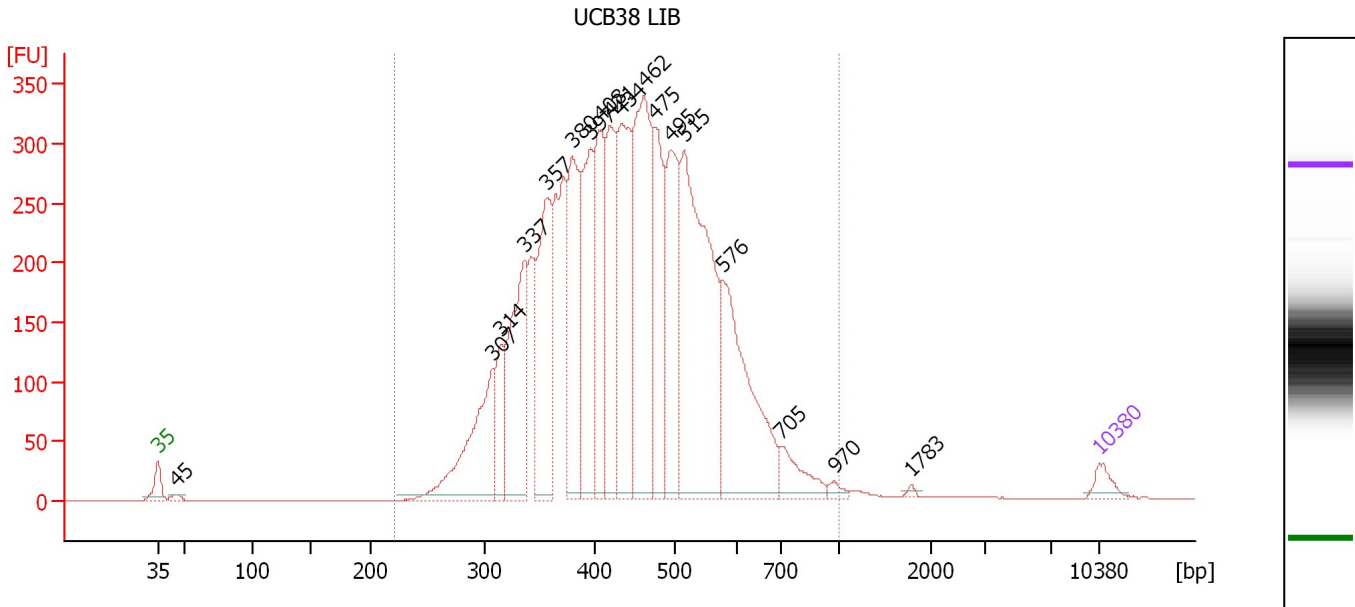
Peak table for Ladder

Peak	Size [bp]	Conc. [pg/μl]	Molarity [pmol/l]	Observations
1	35	125.00	5,411.3	Lower Marker
2	50	150.00	4,545.5	Ladder Peak
3	100	150.00	2,272.7	Ladder Peak
4	150	150.00	1,515.2	Ladder Peak
5	200	150.00	1,136.4	Ladder Peak
6	300	150.00	757.6	Ladder Peak
7	400	150.00	568.2	Ladder Peak
8	500	150.00	454.5	Ladder Peak
9	600	150.00	378.8	Ladder Peak
10	700	150.00	324.7	Ladder Peak
11	1,000	150.00	227.3	Ladder Peak
12	2,000	150.00	113.6	Ladder Peak
13	3,000	150.00	75.8	Ladder Peak
14	7,000	150.00	32.5	Ladder Peak
15	10,380	75.00	10.9	Upper Marker

Assay Class: High Sensitivity DNA Assay
 Data Path: C:\...ents and Settings\Bioanalyzer\2012-03-02\2012-03-02_004.xad

Created: 3/2/2012 10:57:04 AM
 Modified: 3/2/2012 11:43:47 AM

Electropherogram Summary Continued ...



Overall Results for sample 1 : UCB38 LIB

Number of peaks found: 18 Corr. Area 1: 6,493.3
 Noise: 0.1

Peak table for sample 1 : UCB38 LIB

Peak	Size [bp]	Conc. [pg/μl]	Molarity [pmol/l]	Observations
1	35	125.00	5,411.3	Lower Marker
2	45	40.72	1,366.7	
3	307	1,019.66	5,027.3	
4	314	412.28	1,986.9	
5	337	1,145.92	5,155.1	
6	357	1,128.62	4,791.9	
7	380	1,040.91	4,151.9	
8	397	1,023.81	3,907.7	
9	408	924.78	3,435.6	
10	421	879.00	3,166.7	
11	434	1,235.55	4,312.5	
12	462	1,726.42	5,662.4	
13	475	860.13	2,740.8	
14	495	993.73	3,044.3	
15	515	2,277.51	6,702.8	
16	576	1,351.29	3,551.7	
17	705	247.04	530.6	
18	970	38.76	60.5	
19	1,783	14.75	12.5	
20	10,380	75.00	10.9	Upper Marker

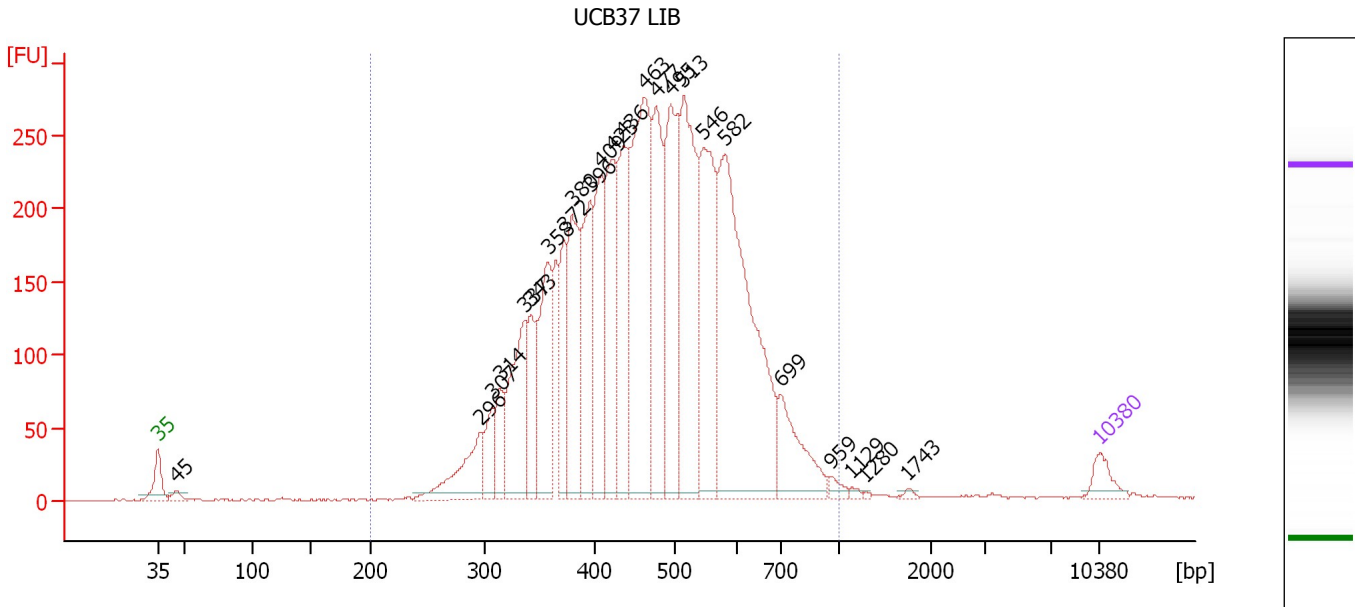
Region table for sample 1 : UCB38 LIB

From [bp]	Molarity [pmol/l]	Average Size [bp]	Conc. [pg/μl]	To [bp]	Corr. Area	% of Total	Size distribution in CV [%]	Color
221	64,385.5	450	17,876.92	1,000	6,493.3	99	23.1	Blue

Assay Class: High Sensitivity DNA Assay
 Data Path: C:\...ents and Settings\Bioanalyzer\2012-03-02\2012-03-02_004.xad

Created: 3/2/2012 10:57:04 AM
 Modified: 3/2/2012 11:43:47 AM

Electropherogram Summary Continued ...



Overall Results for sample 2 : UCB37 LIB

Number of peaks found: 24 Corr. Area 1: 5,298.1
 Noise: 0.4

Peak table for sample 2 : UCB37 LIB

Peak	Size [bp]	Conc. [pg/μl]	Molarity [pmol/l]	Observations
1	35	125.00	5,411.3	Lower Marker
2	45	44.43	1,483.5	
3	296	369.39	1,887.9	
4	307	187.00	924.3	
5	314	220.82	1,064.2	
6	337	598.59	2,693.5	
7	343	291.01	1,286.4	
8	358	586.61	2,483.8	
9	372	378.17	1,538.9	
10	380	620.43	2,472.7	
11	396	563.68	2,154.2	
12	409	609.03	2,255.8	
13	423	642.95	2,303.5	
14	436	700.97	2,436.3	
15	463	1,297.53	4,247.9	
16	477	733.04	2,330.2	
17	495	847.58	2,596.7	
18	513	1,134.77	3,350.5	
19	546	867.04	2,404.7	
20	582	1,782.95	4,645.2	
21	699	380.23	824.0	
22	959	37.49	59.2	
23	1,129	12.86	17.3	
24	1,280	6.06	7.2	
25	1,743	11.76	10.2	
26	10,380	75.00	10.9	Upper Marker


Assay Class: High Sensitivity DNA Assay
Data Path: C:\...ents and Settings\Bioanalyzer\2012-03-02\2012-03-02_004.xad

Created: 3/2/2012 10:57:04 AM
Modified: 3/2/2012 11:43:47 AM

Electropherogram Summary Continued ...

... Region table for sample 2 :

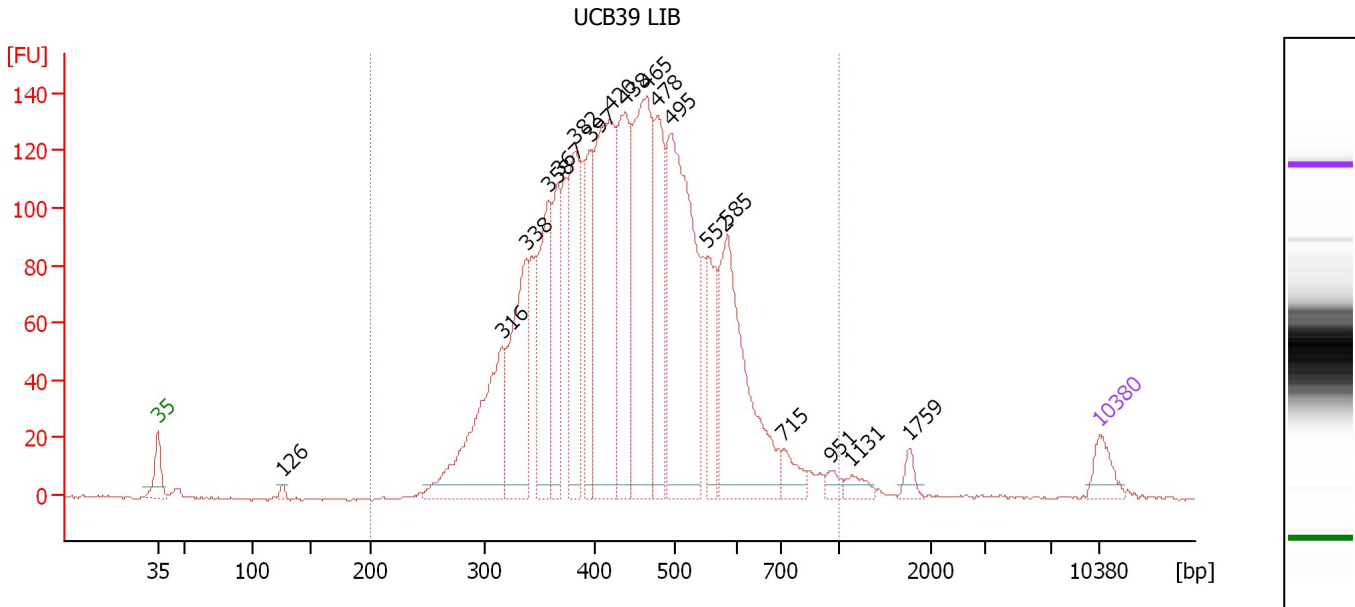
UCB37 LIB

From [bp]	Molarity [pmol/l]	Average Size [bp]	Conc. [pg/μl]	To [bp]	Corr. Area	% of Total	Size distribution in CV [%]	Co lor
200	45,379.9	478	13,268.20	1,000	5,298.1	98	23.7	

Assay Class: High Sensitivity DNA Assay
 Data Path: C:\...ents and Settings\Bioanalyzer\2012-03-02\2012-03-02_004.xad

Created: 3/2/2012 10:57:04 AM
 Modified: 3/2/2012 11:43:47 AM

Electropherogram Summary Continued ...



Overall Results for sample 3 : UCB39 LIB

Number of peaks found: 18 Corr. Area 1: 2,652.5
 Noise: 0.6

Peak table for sample 3 : UCB39 LIB

Peak	Size [bp]	Conc. [pg/μl]	Molarity [pmol/l]	Observations
1	35	125.00	5,411.3	Lower Marker
2	126	21.28	256.5	
3	316	756.00	3,629.2	
4	338	622.91	2,793.4	
5	358	541.25	2,289.1	
6	367	339.76	1,403.1	
7	382	557.59	2,209.6	
8	397	357.26	1,362.9	
9	420	949.24	3,428.3	
10	438	641.77	2,220.8	
11	465	935.23	3,050.4	
12	478	471.17	1,493.9	
13	495	1,182.48	3,622.9	
14	552	271.66	745.8	
15	585	806.73	2,090.4	
16	715	88.20	187.0	
17	951	35.12	56.0	
18	1,131	46.16	61.8	
19	1,759	38.59	33.2	
20	10,380	75.00	10.9	Upper Marker

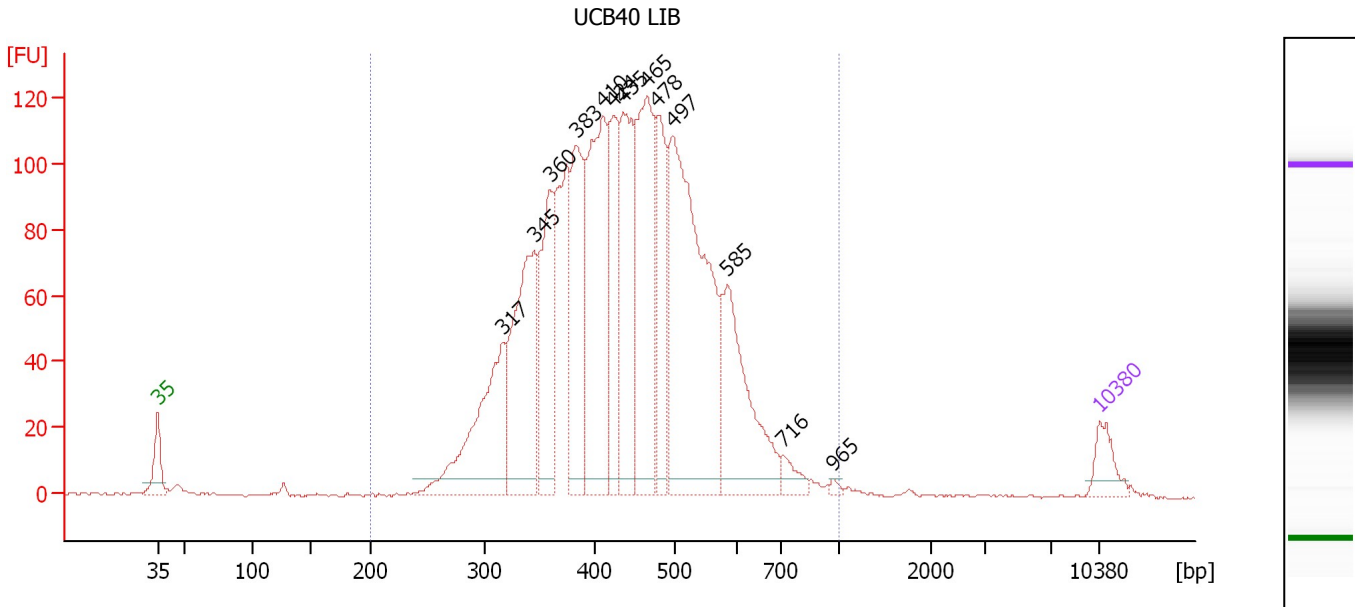
Region table for sample 3 : UCB39 LIB

From [bp]	Molarity [pmol/l]	Average Size [bp]	Conc. [pg/μl]	To [bp]	Corr. Area	% of Total	Size distribution in CV [%]	Color
200	33,903.2	451	9,429.42	1,000	2,652.5	98	23.4	Blue

Assay Class: High Sensitivity DNA Assay
 Data Path: C:\...ents and Settings\Bioanalyzer\2012-03-02\2012-03-02_004.xad

Created: 3/2/2012 10:57:04 AM
 Modified: 3/2/2012 11:43:47 AM

Electropherogram Summary Continued ...



Overall Results for sample 4 : UCB40 LIB

Number of peaks found: 13 Corr. Area 1: 2,249.7
 Noise: 0.4

Peak table for sample 4 : UCB40 LIB

Peak	Size [bp]	Conc. [pg/μl]	Molarity [pmol/l]	Observations
1	35	125.00	5,411.3	Lower Marker
2	317	600.02	2,869.6	
3	345	681.13	2,987.9	
4	360	439.19	1,848.4	
5	383	512.15	2,023.4	
6	410	752.20	2,777.7	
7	424	389.40	1,391.5	
8	435	555.71	1,934.9	
9	465	678.05	2,208.7	
10	478	387.53	1,228.4	
11	497	1,272.15	3,879.5	
12	585	511.24	1,324.8	
13	716	54.06	114.5	
14	965	11.30	17.7	
15	10,380	75.00	10.9	Upper Marker

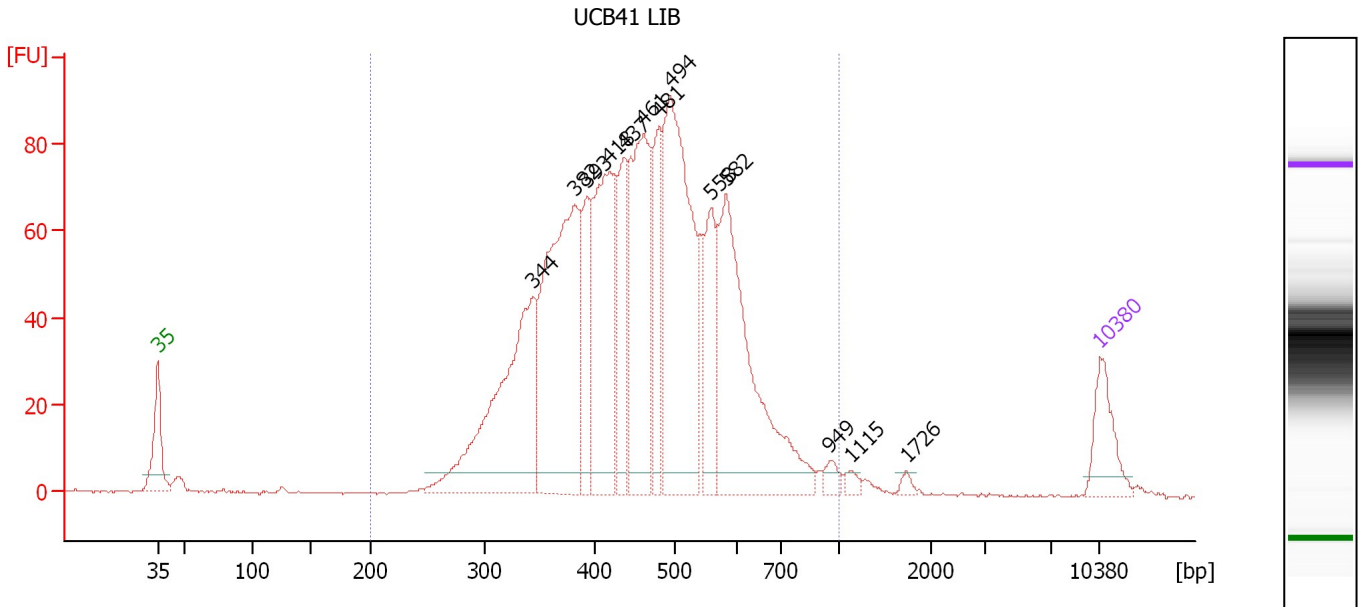
Region table for sample 4 : UCB40 LIB

From [bp]	Molarity [pmol/l]	Average Size [bp]	Conc. [pg/μl]	To [bp]	Corr. Area	% of Total	Size distribution in CV [%]	Color
200	27,116.1	446	7,500.11	1,000	2,249.7	99	22.1	Blue

Assay Class: High Sensitivity DNA Assay
 Data Path: C:\...ents and Settings\Bioanalyzer\2012-03-02\2012-03-02_004.xad

Created: 3/2/2012 10:57:04 AM
 Modified: 3/2/2012 11:43:47 AM

Electropherogram Summary Continued ...



Overall Results for sample 5 : UCB41 LIB

Number of peaks found: 13 Corr. Area 1: 1,622.9
 Noise: 0.3

Peak table for sample 5 : UCB41 LIB

Peak	Size [bp]	Conc. [pg/μl]	Molarity [pmol/l]	Observations
1	35	125.00	5,411.3	Lower Marker
2	344	530.82	2,336.5	
3	382	588.72	2,333.0	
4	393	151.49	583.6	
5	418	381.21	1,381.8	
6	437	163.42	566.4	
7	461	398.55	1,310.7	
8	481	160.01	504.3	
9	494	593.34	1,820.4	
10	558	160.49	435.6	
11	582	501.51	1,304.9	
12	949	19.44	31.0	
13	1,115	11.94	16.2	
14	1,726	8.30	7.3	
15	10,380	75.00	10.9	Upper Marker

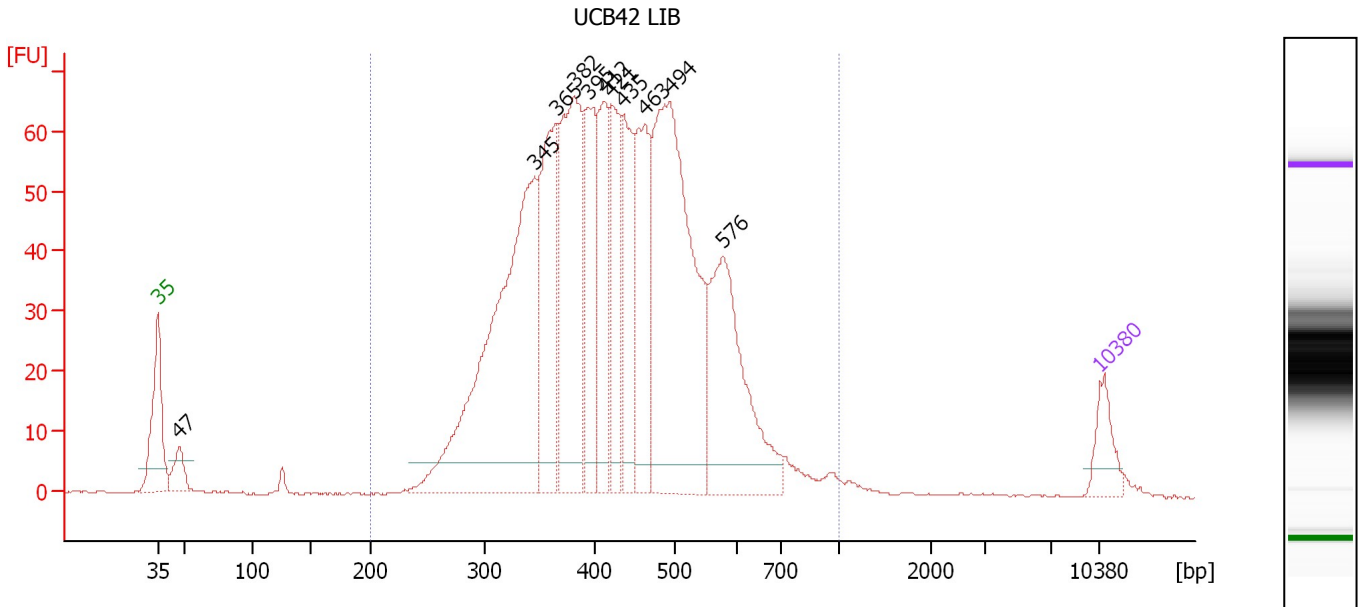
Region table for sample 5 : UCB41 LIB

From [bp]	Molarity [pmol/l]	Average Size [bp]	Conc. [pg/μl]	To [bp]	Corr. Area	% of Total	Size distribution in CV [%]	Color
200	13,444.7	466	3,847.79	1,000	1,622.9	97	23.8	Blue

Assay Class: High Sensitivity DNA Assay
 Data Path: C:\...ents and Settings\Bioanalyzer\2012-03-02\2012-03-02_004.xad

Created: 3/2/2012 10:57:04 AM
 Modified: 3/2/2012 11:43:47 AM

Electropherogram Summary Continued ...



Overall Results for sample 6 : UCB42 LIB

Number of peaks found: 11 Corr. Area 1: 1,367.1
 Noise: 0.1

Peak table for sample 6 : UCB42 LIB

Peak	Size [bp]	Conc. [pg/μl]	Molarity [pmol/l]	Observations
1	35	125.00	5,411.3	Lower Marker
2	47	88.00	2,860.2	
3	345	1,276.16	5,600.4	
4	365	470.97	1,952.4	
5	382	648.56	2,569.3	
6	395	333.85	1,281.0	
7	412	275.25	1,011.1	
8	421	234.66	844.0	
9	435	290.71	1,011.7	
10	463	363.73	1,191.1	
11	494	1,091.91	3,352.3	
12	576	538.15	1,415.9	
13	10,380	75.00	10.9	Upper Marker

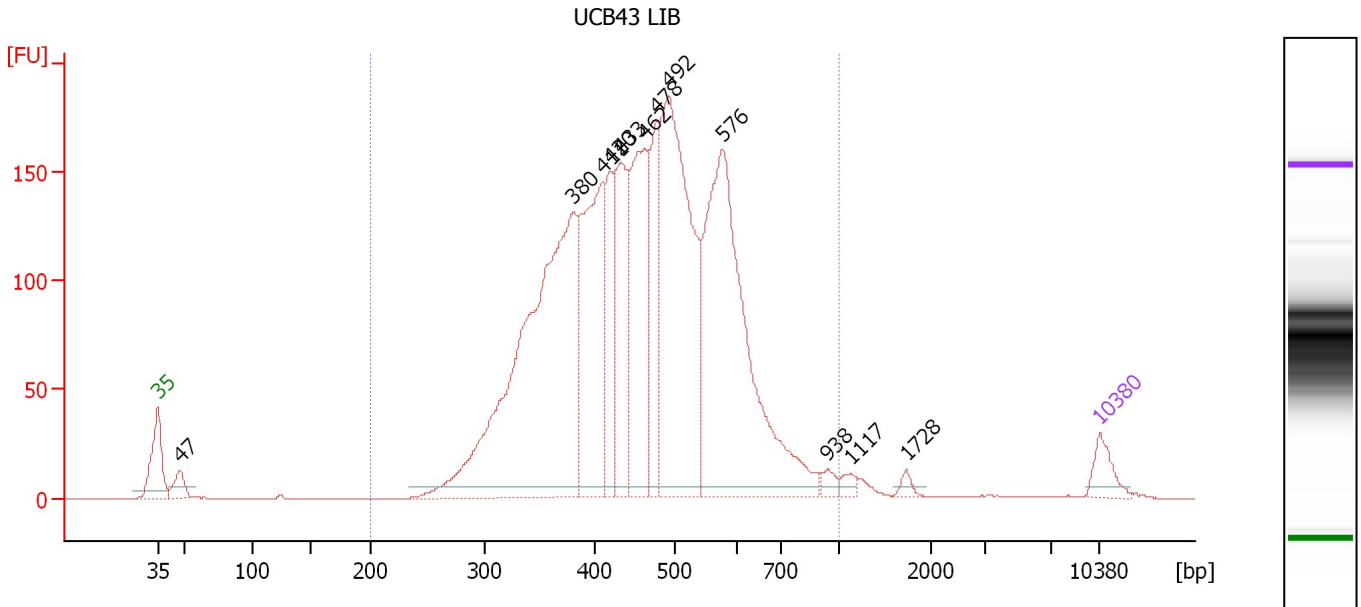
Region table for sample 6 : UCB42 LIB

From [bp]	Molarity [pmol/l]	Average Size [bp]	Conc. [pg/μl]	To [bp]	Corr. Area	% of Total	Size distribution in CV [%]	Color
200	22,074.6	436	5,929.27	1,000	1,367.1	98	23.6	Blue

Assay Class: High Sensitivity DNA Assay
 Data Path: C:\...ents and Settings\Bioanalyzer\2012-03-02\2012-03-02_004.xad

Created: 3/2/2012 10:57:04 AM
 Modified: 3/2/2012 11:43:47 AM

Electropherogram Summary Continued ...



Overall Results for sample 7 : UCB43 LIB

Number of peaks found: 12 Corr. Area 1: 3,208.1
 Noise: 0.1

Peak table for sample 7 : UCB43 LIB

Peak	Size [bp]	Conc. [pg/μl]	Molarity [pmol/l]	Observations
1	35	125.00	5,411.3	Lower Marker
2	47	92.15	2,968.1	
3	380	2,243.11	8,935.5	
4	411	870.98	3,207.0	
5	420	341.46	1,230.8	
6	433	533.37	1,867.7	
7	462	753.22	2,471.0	
8	478	397.30	1,260.0	
9	492	1,476.41	4,547.7	
10	576	1,645.45	4,325.7	
11	938	35.01	56.6	
12	1,117	30.46	41.3	
13	1,728	23.23	20.4	
14	10,380	75.00	10.9	Upper Marker

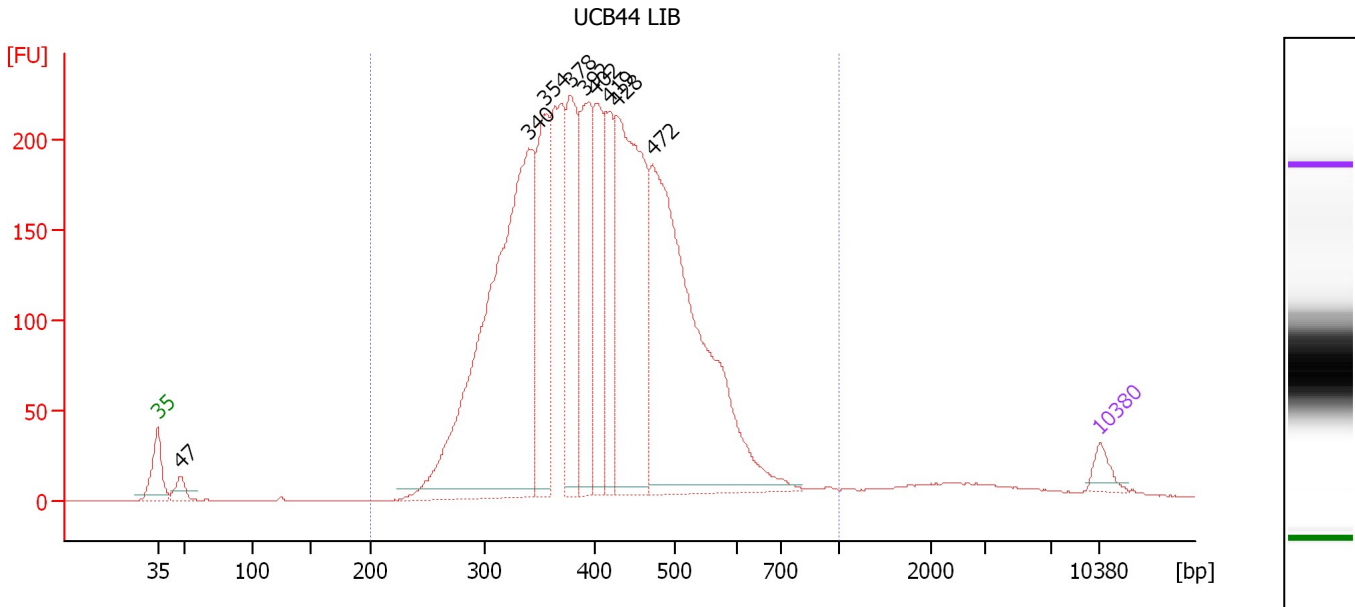
Region table for sample 7 : UCB43 LIB

From [bp]	Molarity [pmol/l]	Average Size [bp]	Conc. [pg/μl]	To [bp]	Corr. Area	% of Total	Size distribution in CV [%]	Color
200	29,880.2	468	8,616.98	1,000	3,208.1	97	23.3	Blue

Assay Class: High Sensitivity DNA Assay
 Data Path: C:\...ents and Settings\Bioanalyzer\2012-03-02\2012-03-02_004.xad

Created: 3/2/2012 10:57:04 AM
 Modified: 3/2/2012 11:43:47 AM

Electropherogram Summary Continued ...



Overall Results for sample 8 : UCB44 LIB

Number of peaks found: 9 Corr. Area 1: 4,288.2
 Noise: 0.2

Peak table for sample 8 : UCB44 LIB

Peak	Size [bp]	Conc. [pg/μl]	Molarity [pmol/l]	Observations
1	35	125.00	5,411.3	Lower Marker
2	47	110.87	3,541.9	
3	340	3,567.35	15,878.2	
4	354	998.04	4,269.8	
5	378	953.12	3,816.5	
6	392	874.70	3,379.6	
7	402	719.86	2,714.7	
8	419	567.10	2,052.9	
9	428	1,922.52	6,801.5	
10	472	2,897.68	9,292.7	
11	10,380	75.00	10.9	Upper Marker

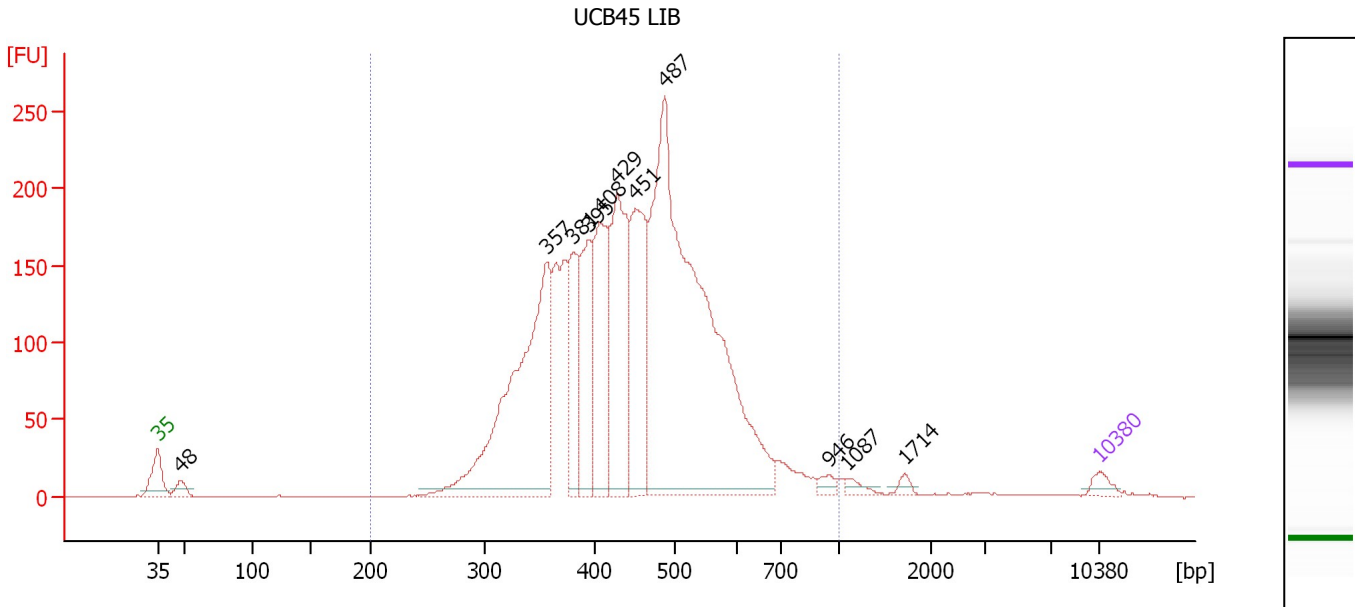
Region table for sample 8 : UCB44 LIB

From [bp]	Molarity [pmol/l]	Average Size [bp]	Conc. [pg/μl]	To [bp]	Corr. Area	% of Total	Size distribution in CV [%]	Color
200	53,806.2	414	13,862.53	1,000	4,288.2	97	22.0	Blue

Assay Class: High Sensitivity DNA Assay
 Data Path: C:\...ents and Settings\Bioanalyzer\2012-03-02\2012-03-02_004.xad

Created: 3/2/2012 10:57:04 AM
 Modified: 3/2/2012 11:43:47 AM

Electropherogram Summary Continued ...



Overall Results for sample 9 : UCB45 LIB

Number of peaks found: 11 Corr. Area 1: 3,554.8
 Noise: 0.5

Peak table for sample 9 : UCB45 LIB

Peak	Size [bp]	Conc. [pg/μl]	Molarity [pmol/l]	Observations
1	35	125.00	5,411.3	Lower Marker
2	48	131.28	4,160.7	
3	357	3,309.91	14,067.0	
4	381	864.29	3,433.7	
5	395	979.50	3,756.0	
6	408	1,263.55	4,697.6	
7	429	1,680.16	5,937.8	
8	451	1,460.63	4,909.2	
9	487	6,513.06	20,263.3	
10	946	75.54	121.0	
11	1,087	71.90	100.2	
12	1,714	51.19	45.2	
13	10,380	75.00	10.9	Upper Marker

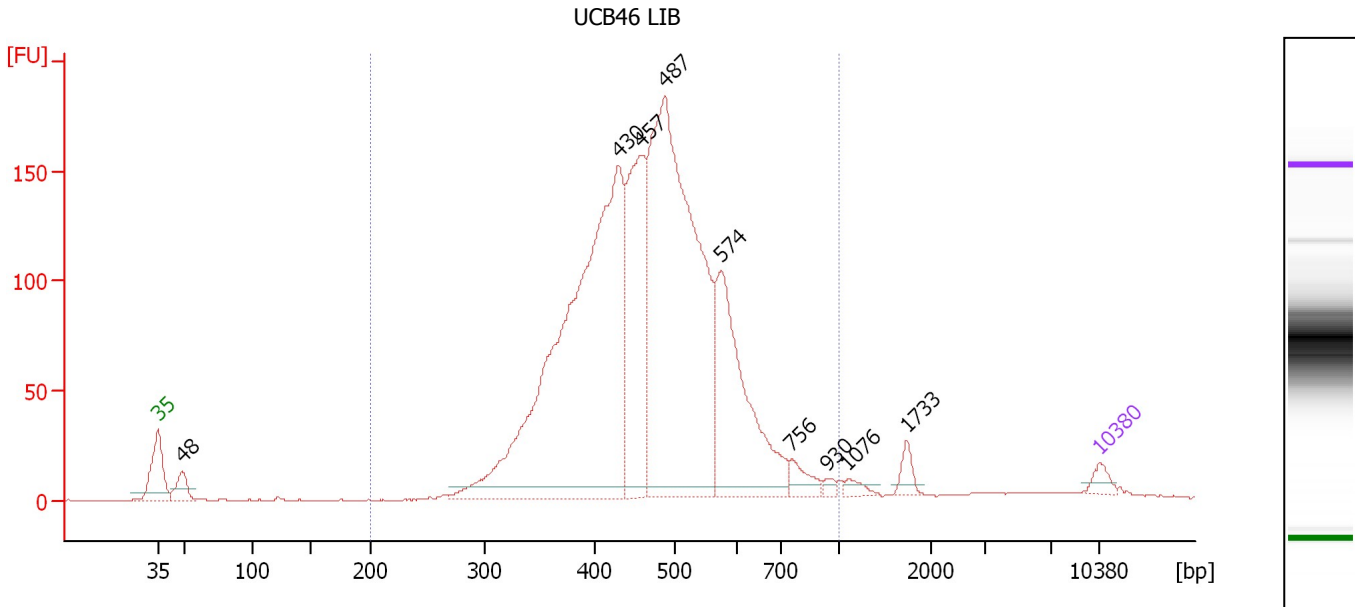
Region table for sample 9 : UCB45 LIB

From [bp]	Molarity [pmol/l]	Average Size [bp]	Conc. [pg/μl]	To [bp]	Corr. Area	% of Total	Size distribution in CV [%]	Color
200	63,440.1	455	17,901.92	1,000	3,554.8	96	22.9	Blue

Assay Class: High Sensitivity DNA Assay
 Data Path: C:\...ents and Settings\Bioanalyzer\2012-03-02\2012-03-02_004.xad

Created: 3/2/2012 10:57:04 AM
 Modified: 3/2/2012 11:43:47 AM

Electropherogram Summary Continued ...



Overall Results for sample 10 : UCB46 LIB

Number of peaks found: 9 Corr. Area 1: 2,468.8
 Noise: 0.3

Peak table for sample 10 : UCB46 LIB

Peak	Size [bp]	Conc. [pg/μl]	Molarity [pmol/l]	Observations
1	35	125.00	5,411.3	Lower Marker
2	48	228.47	7,185.6	
3	430	5,982.37	21,097.5	
4	457	1,766.42	5,856.9	
5	487	5,303.60	16,502.7	
6	574	1,792.24	4,728.7	
7	756	172.71	346.0	
8	930	45.18	73.6	
9	1,076	68.25	96.1	
10	1,733	108.95	95.3	
11	10,380	75.00	10.9	Upper Marker

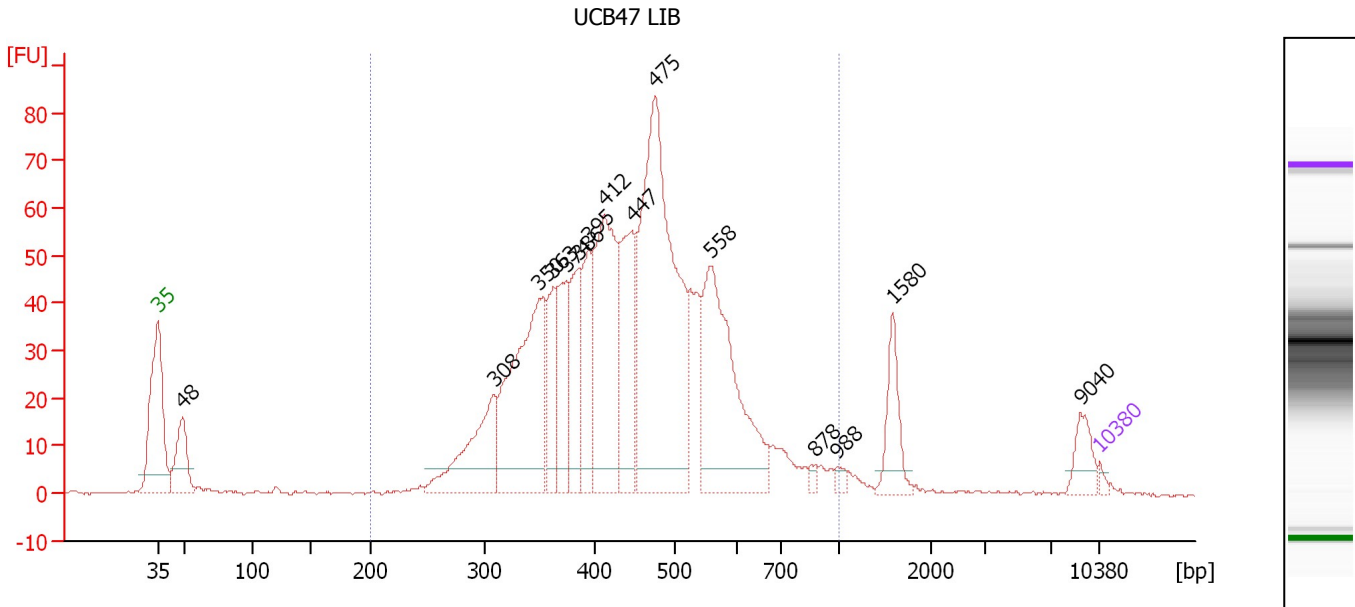
Region table for sample 10 : UCB46 LIB

From [bp]	Molarity [pmol/l]	Average Size [bp]	Conc. [pg/μl]	To [bp]	Corr. Area	% of Total	Size distribution in CV [%]	Color
200	52,207.0	476	15,562.91	1,000	2,468.8	96	20.9	Blue

Assay Class: High Sensitivity DNA Assay
 Data Path: C:\...ents and Settings\Bioanalyzer\2012-03-02\2012-03-02_004.xad

Created: 3/2/2012 10:57:04 AM
 Modified: 3/2/2012 11:43:47 AM

Electropherogram Summary Continued ...



Overall Results for sample 11 : UCB47 LIB

Number of peaks found: 15 Corr. Area 1: 1,184.9
 Noise: 0.3

Peak table for sample 11 : UCB47 LIB

Peak	Size [bp]	Conc. [pg/μl]	Molarity [pmol/l]	Observations
1	35	125.00	5,411.3	Lower Marker
2	48	1,631.02	51,154.4	
3	308	2,860.17	14,055.2	
4	350	5,697.71	24,664.9	
5	363	1,564.17	6,531.8	
6	374	1,807.78	7,316.4	
7	386	1,729.87	6,791.7	
8	395	2,052.28	7,874.3	
9	412	4,850.67	17,832.4	
10	447	2,902.93	9,845.3	
11	475	10,113.91	32,240.8	
12	558	5,423.73	14,716.0	
13	878	145.88	251.8	
14	988	158.32	242.8	
15	1,580	1,054.16	1,010.6	
16	9,040	565.54	94.8	
17	10,380	75.00	10.9	Upper Marker

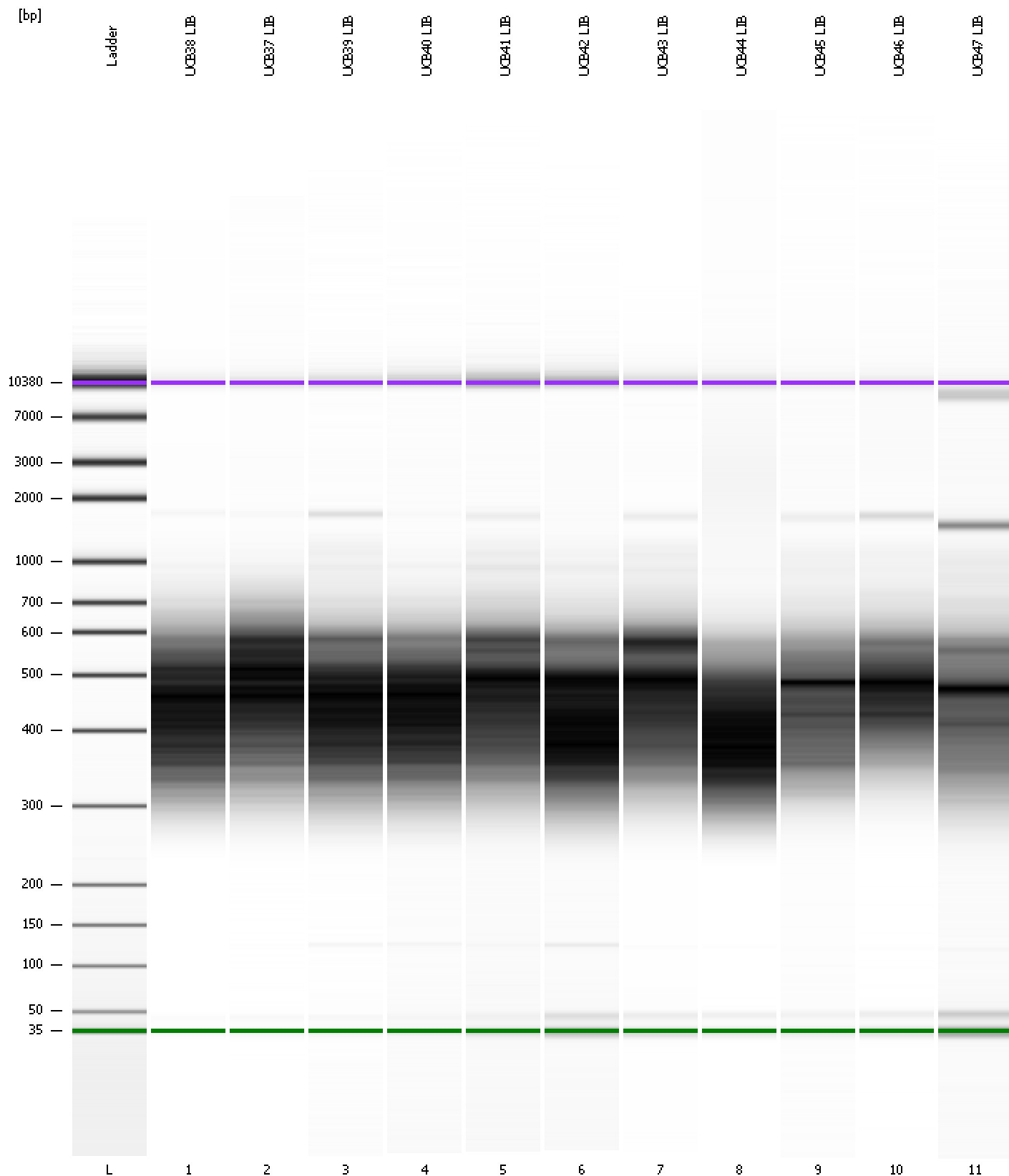
Region table for sample 11 : UCB47 LIB

From [bp]	Molarity [pmol/l]	Average Size [bp]	Conc. [pg/μl]	To [bp]	Corr. Area	% of Total	Size distribution in CV [%]	Color
200	158,454.4	456	44,092.43	1,000	1,184.9	89	25.0	Blue

Assay Class: High Sensitivity DNA Assay
Data Path: C:\...ents and Settings\Bioanalyzer\2012-03-02\2012-03-02_004.xad

Created: 3/2/2012 10:57:04 AM
Modified: 3/2/2012 11:43:47 AM

Gel Image

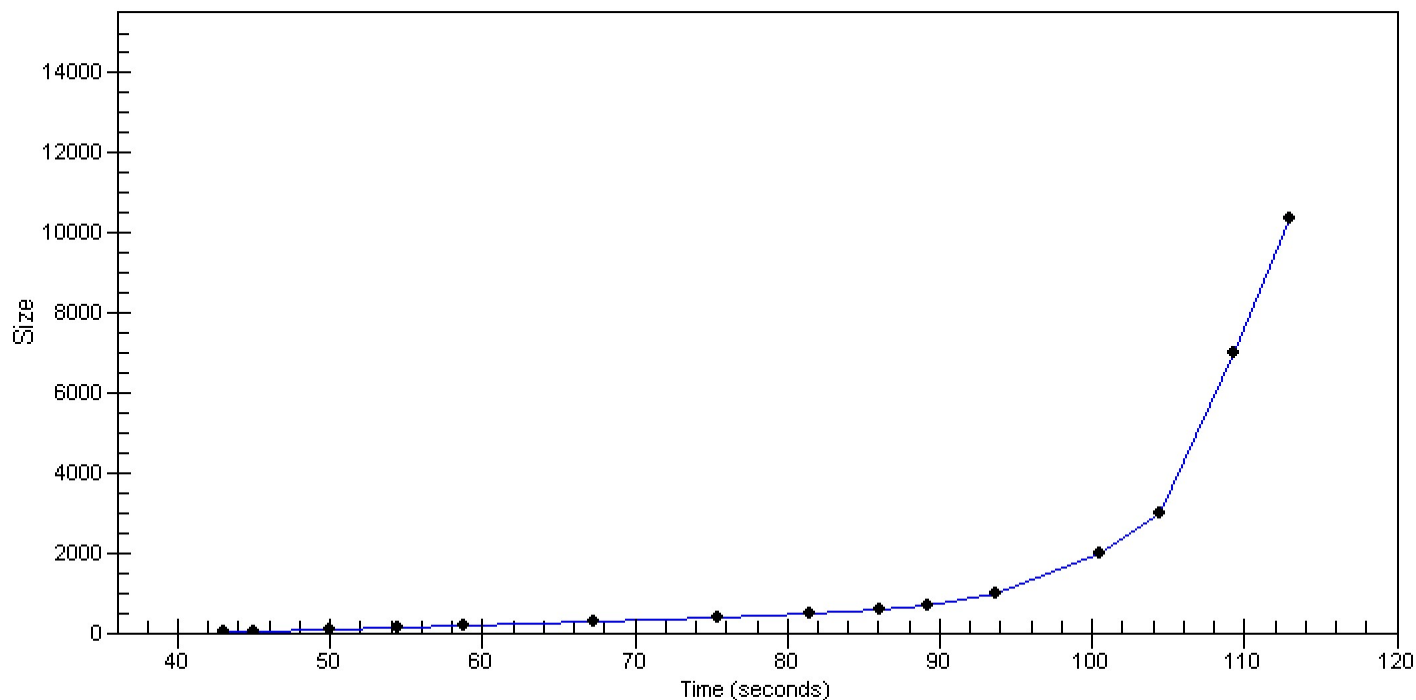


Assay Class: High Sensitivity DNA Assay
Data Path: C:\...ents and Settings\Bioanalyzer\2012-03-02\2012-03-02_004.xad

Created: 3/2/2012 10:57:04 AM
Modified: 3/2/2012 11:43:47 AM

Curves

Standard Curve



Assay Class: High Sensitivity DNA Assay
 Data Path: C:\...ents and Settings\Bioanalyzer\2012-03-02\2012-03-02_004.xad

Created: 3/2/2012 10:57:04 AM
 Modified: 3/2/2012 11:43:47 AM

Run Logbook

Description	Number	Source	Category	Sub Category	Time	Time Zone	User	Host
Run ended on port 1 (Number of wells acquired: 12)		Instrument	Run		3/2/2012 11:38:22 AM	(GMT --08:00) Pacific Standard Time	UC Davis	D8XSMGH1
Run started on port 1 (File: C:\Documents and Settings\Bioanalyzer\2012-03-02\2012-03-02_004.xad)		Instrument	Run		3/2/2012 10:57:10 AM	(GMT --08:00) Pacific Standard Time	UC Davis	D8XSMGH1
Product Number : G2938B		Instrument	Run		3/2/2012 10:57:10 AM	(GMT --08:00) Pacific Standard Time	UC Davis	D8XSMGH1
Name :		Instrument	Run		3/2/2012 10:57:10 AM	(GMT --08:00) Pacific Standard Time	UC Davis	D8XSMGH1
Vendor : Agilent Technologies		Instrument	Run		3/2/2012 10:57:10 AM	(GMT --08:00) Pacific Standard Time	UC Davis	D8XSMGH1
Serial# : DE13701086		Instrument	Run		3/2/2012 10:57:10 AM	(GMT --08:00) Pacific Standard Time	UC Davis	D8XSMGH1
Firmware : C.01.069		Instrument	Run		3/2/2012 10:57:10 AM	(GMT --08:00) Pacific Standard Time	UC Davis	D8XSMGH1
Cartridge : Electrode		Instrument	Run		3/2/2012 10:57:10 AM	(GMT --08:00) Pacific Standard Time	UC Davis	D8XSMGH1