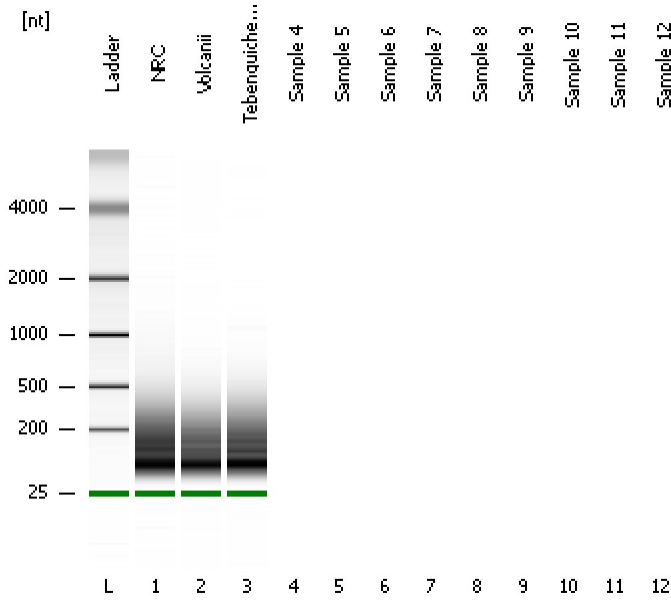


Assay Class: Prokaryote Total RNA Nano
Data Path: C:\...ents and Settings\Bioanalyzer\2012-03-02\2012-03-02_008.xad

Created: 3/2/2012 3:21:49 PM
Modified: 3/2/2012 3:37:08 PM

Electrophoresis File Run Summary



Instrument Information:

Instrument Name: DE13701086 Firmware: C.01.069
Serial#: DE13701086 Type: G2938B

Assay Information:

Assay Origin Path: C:\Program Files\Agilent\2100 bioanalyzer\2100 expert\assays\RNA\Prokaryote Total RNA Nano Series II.xsy

Assay Class: Prokaryote Total RNA Nano

Version: 2.5

Assay Comments: Total RNA Analysis ng sensitivity (Prokaryote)

© Copyright 2003 - 2009 Agilent Technologies, Inc.

Chip Information:

Chip Lot #:

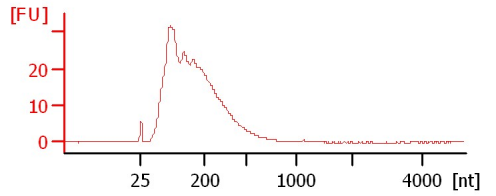
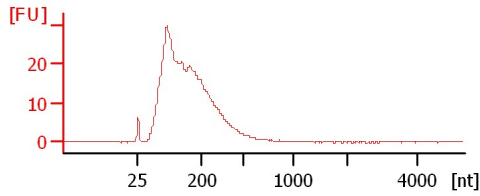
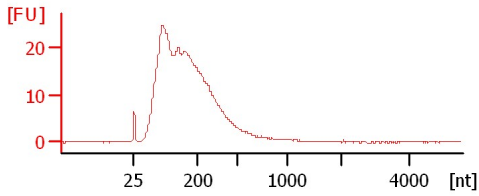
Reagent Kit Lot #:

Chip Comments:

NRC

Volcanii

Tebenquichense



Assay Class: Prokaryote Total RNA Nano
Data Path: C:\...ents and Settings\Bioanalyzer\2012-03-02\2012-03-02_008.xad

Created: 3/2/2012 3:21:49 PM
Modified: 3/2/2012 3:37:08 PM

Electrophoresis File Run Summary (Chip Summary)

Sample Name	Sample Comment	Status	Result Label	Result Color
NRC		✓		
Volcanii		✓		
Tebenquichense		✓		
Sample 4				
Sample 5				
Sample 6				
Sample 7				
Sample 8				
Sample 9				
Sample 10				
Sample 11				
Sample 12				
Ladder		✓		

Chip Lot #**Reagent Kit Lot #****Chip Comments :**

Assay Class: Prokaryote Total RNA Nano
Data Path: C:\...ents and Settings\Bioanalyzer\2012-03-02\2012-03-02_008.xad

Created: 3/2/2012 3:21:49 PM
Modified: 3/2/2012 3:37:08 PM

Electrophoresis Assay Details

General Analysis Settings

Number of Available Sample and Ladder Wells (Max.) : 13

Minimum Visible Range [s] : 17

Maximum Visible Range [s] : 70

Start Analysis Time Range [s] : 19

End Analysis Time Range [s] : 69

Ladder Concentration [ng/ μ l] : 150

Lower Marker Concentration [ng/ μ l] : 0

Upper Marker Concentration [ng/ μ l] : 0

Used Lower Marker for Quantitation

Standard Curve Fit is Logarithmic

Show Data Aligned to Lower Marker

Integrator Settings

Integration Start Time [s] : 19

Integration End Time [s] : 69

Slope Threshold : 0.6

Height Threshold [FU] : 0.5

Area Threshold : 0.2

Width Threshold [s] : 0.5

Baseline Plateau [s] : 6

Filter Settings

Filter Width [s] : 0.5

Polynomial Order : 4

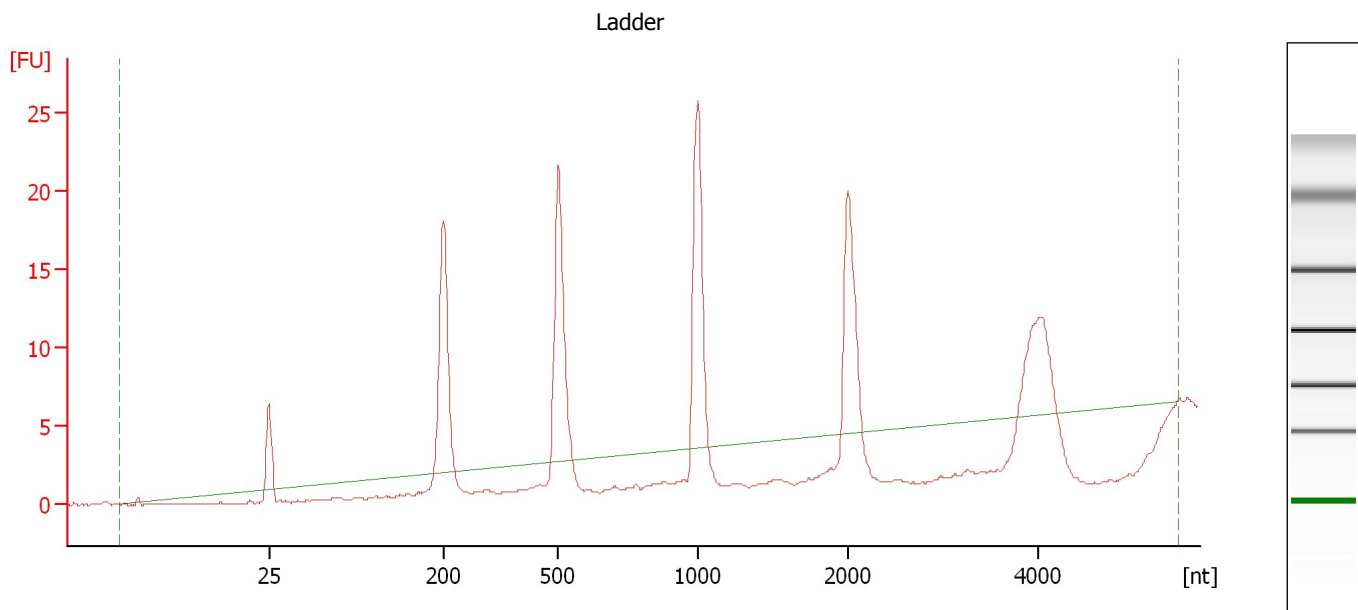
Ladder

Ladder Peak	Size
1	25
2	200
3	500
4	1000
5	2000
6	4000

Assay Class: Prokaryote Total RNA Nano
Data Path: C:\...ents and Settings\Bioanalyzer\2012-03-02\2012-03-02_008.xad

Created: 3/2/2012 3:21:49 PM
Modified: 3/2/2012 3:37:08 PM

Electropherogram Summary



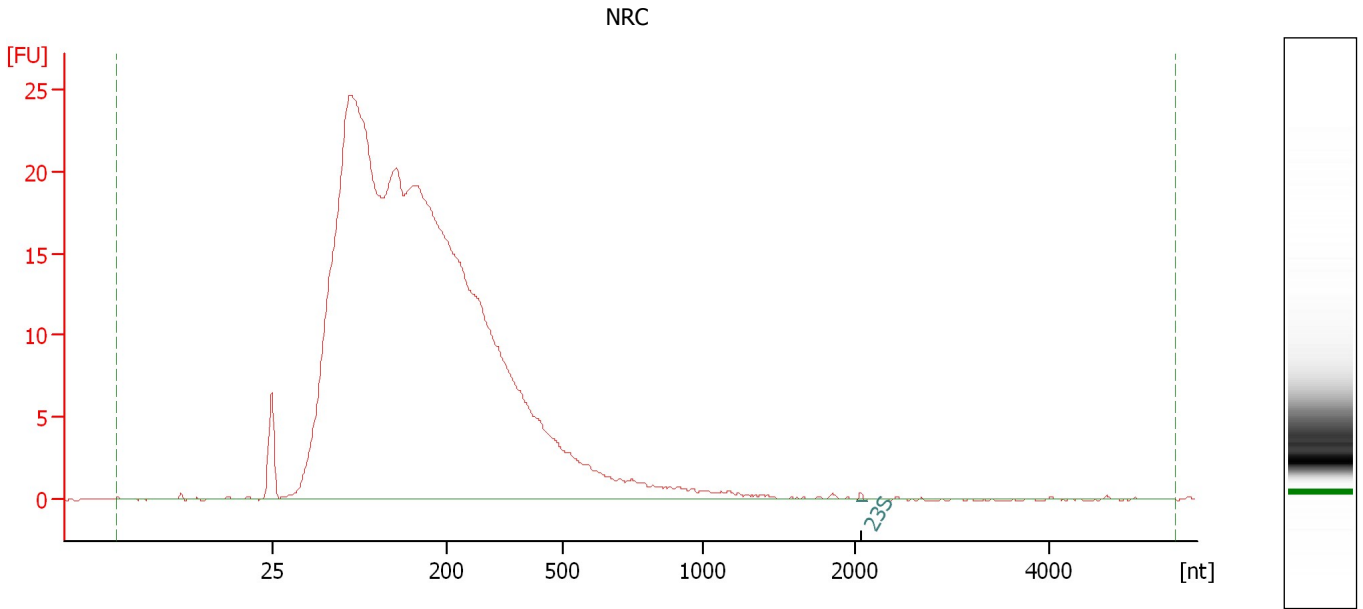
Overall Results for Ladder

RNA Area: 91.8 RNA Concentration: 150 ng/μl

Assay Class: Prokaryote Total RNA Nano
Data Path: C:\...ents and Settings\Bioanalyzer\2012-03-02\2012-03-02_008.xad

Created: 3/2/2012 3:21:49 PM
Modified: 3/2/2012 3:37:08 PM

Electropherogram Summary Continued ...



Overall Results for sample 1 : NRC

RNA Area: 509.7 rRNA Ratio [23s / 16s]: 0.0
RNA Concentration: 833 ng/μl RNA Integrity Number (RIN): 2.3 (B.02.08)

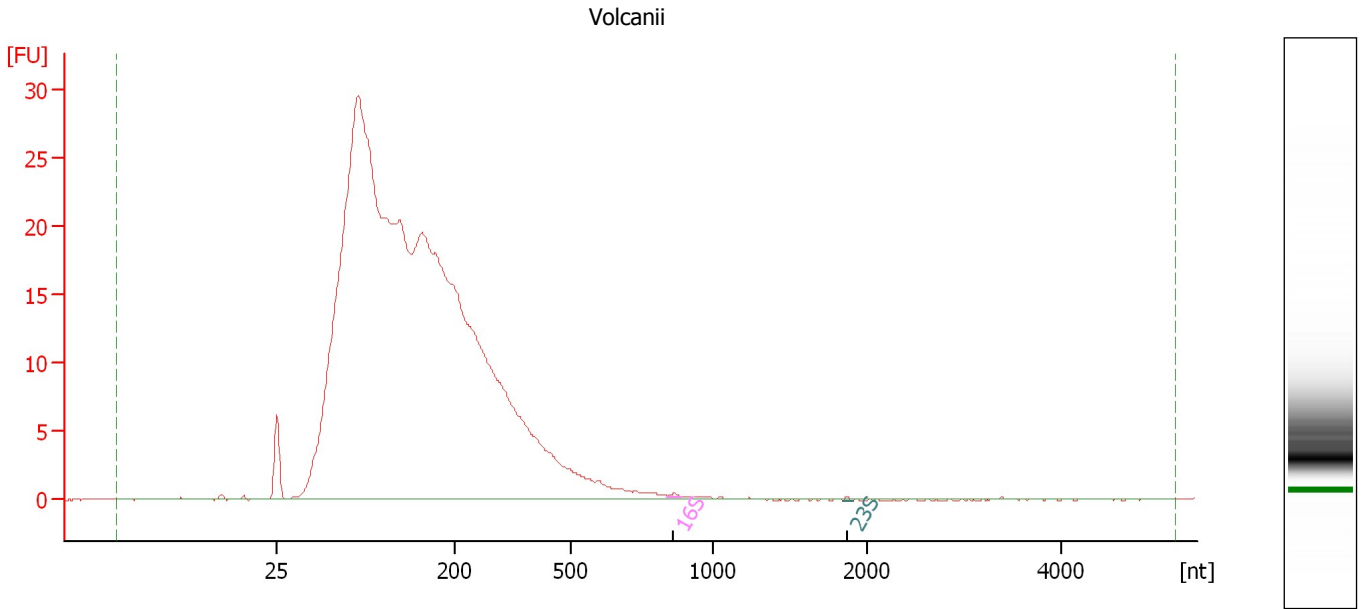
Fragment table for sample 1 : NRC

Name	Start Size [nt]	End Size [nt]	Area	% of total Area
23S	2,020	2,109	0.2	0.0

Assay Class: Prokaryote Total RNA Nano
Data Path: C:\...ents and Settings\Bioanalyzer\2012-03-02\2012-03-02_008.xad

Created: 3/2/2012 3:21:49 PM
Modified: 3/2/2012 3:37:08 PM

Electropherogram Summary Continued ...



Overall Results for sample 2 : Volcanii

RNA Area: 505.4 rRNA Ratio [23s / 16s]: 0.6
RNA Concentration: 826 ng/μl RNA Integrity Number (RIN): 2.7 (B.02.08)

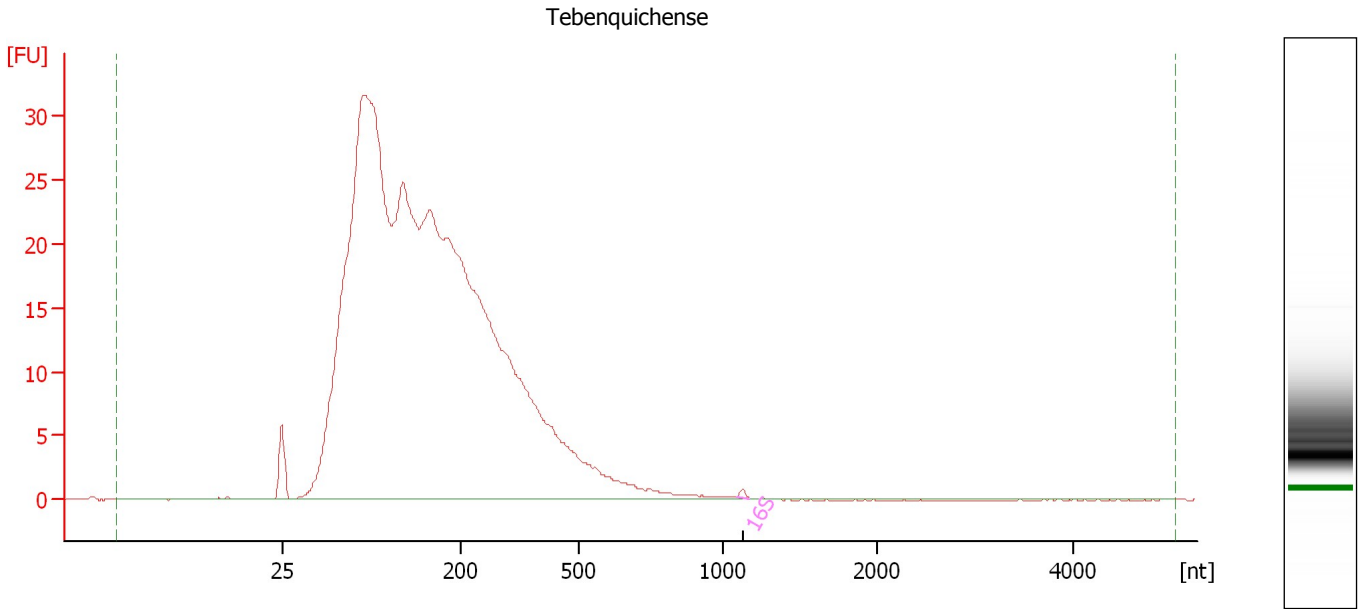
Fragment table for sample 2 : Volcanii

Name	Start Size [nt]	End Size [nt]	Area	% of total Area
16S	839	884	0.2	0.0
23S	1,852	1,908	0.1	0.0

Assay Class: Prokaryote Total RNA Nano
Data Path: C:\...ents and Settings\Bioanalyzer\2012-03-02\2012-03-02_008.xad

Created: 3/2/2012 3:21:49 PM
Modified: 3/2/2012 3:37:08 PM

Electropherogram Summary Continued ...



Overall Results for sample 3 : Tebenquichense

RNA Area: 596.1 rRNA Ratio [23s / 16s]: 0.0
RNA Concentration: 974 ng/μl RNA Integrity Number (RIN): 2.4 (B.02.08)

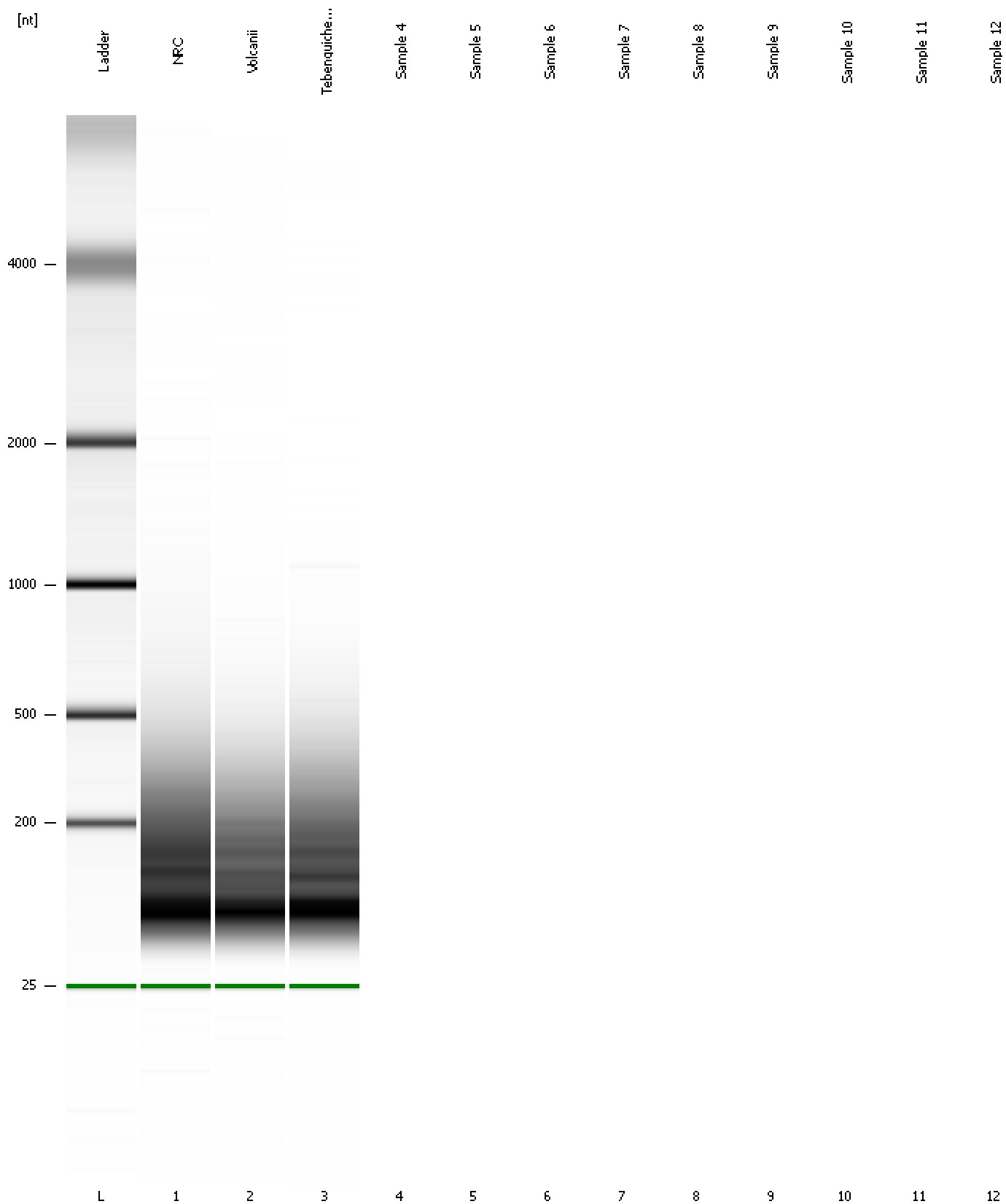
Fragment table for sample 3 : Tebenquichense

Name	Start Size [nt]	End Size [nt]	Area	% of total Area
16S	1,094	1,177	0.4	0.1

Assay Class: Prokaryote Total RNA Nano
Data Path: C:\...ents and Settings\Bioanalyzer\2012-03-02\2012-03-02_008.xad

Created: 3/2/2012 3:21:49 PM
Modified: 3/2/2012 3:37:08 PM

Gel Image

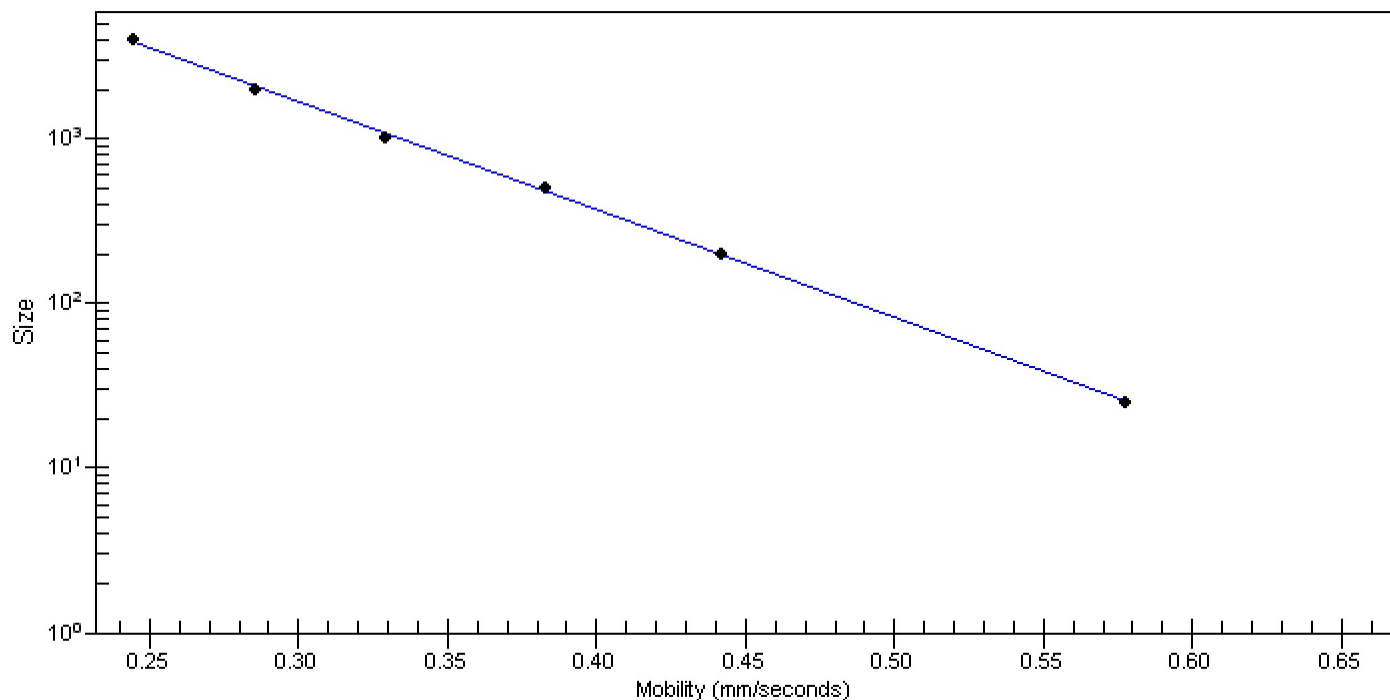


Assay Class: Prokaryote Total RNA Nano
Data Path: C:\...ents and Settings\Bioanalyzer\2012-03-02\2012-03-02_008.xad

Created: 3/2/2012 3:21:49 PM
Modified: 3/2/2012 3:37:08 PM

Curves

Standard Curve



Assay Class: Prokaryote Total RNA Nano Created: 3/2/2012 3:21:49 PM
 Data Path: C:\...ents and Settings\Bioanalyzer\2012-03-02\2012-03-02_008.xad Modified: 3/2/2012 3:37:08 PM

Run Logbook

Description	Number	Source	Category	Sub Category	Time	Time Zone	User	Host
Run ended on port 1 (Number of wells acquired: 4)		Instrument	Run		3/2/2012 3:33:18 PM	(GMT --08:00) Pacific Standard Time	UC Davis	D8XSMGH1
Run started on port 1 (File: C:\Documents and Settings\Bioanalyzer\2012-03-02\2012-03-02_007.xad)		Instrument	Run		3/2/2012 3:21:55 PM	(GMT --08:00) Pacific Standard Time	UC Davis	D8XSMGH1
Product Number : G2938B		Instrument	Run		3/2/2012 3:21:55 PM	(GMT --08:00) Pacific Standard Time	UC Davis	D8XSMGH1
Name :		Instrument	Run		3/2/2012 3:21:55 PM	(GMT --08:00) Pacific Standard Time	UC Davis	D8XSMGH1
Vendor : Agilent Technologies		Instrument	Run		3/2/2012 3:21:55 PM	(GMT --08:00) Pacific Standard Time	UC Davis	D8XSMGH1
Serial# : DE13701086		Instrument	Run		3/2/2012 3:21:55 PM	(GMT --08:00) Pacific Standard Time	UC Davis	D8XSMGH1
Firmware : C.01.069		Instrument	Run		3/2/2012 3:21:55 PM	(GMT --08:00) Pacific Standard Time	UC Davis	D8XSMGH1
Cartridge : Electrode		Instrument	Run		3/2/2012 3:21:55 PM	(GMT --08:00) Pacific Standard Time	UC Davis	D8XSMGH1