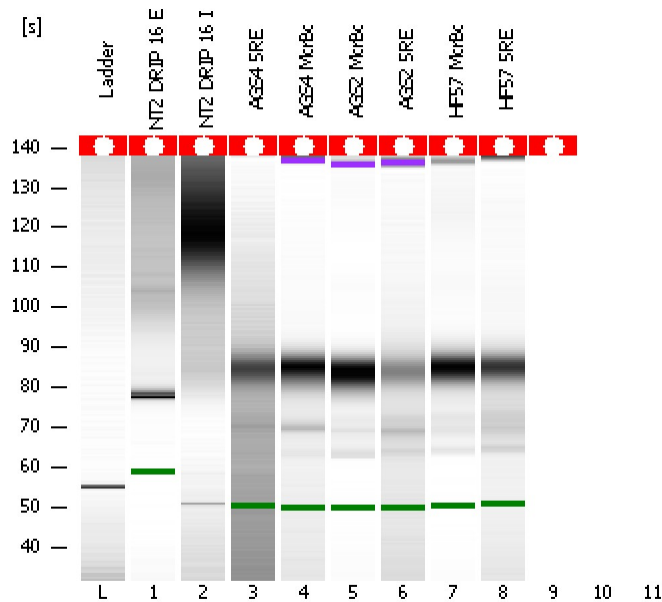


Assay Class: High Sensitivity DNA Assay
Data Path: C:\...ents and Settings\Bioanalyzer\2012-03-06\2012-03-06_002.xad

Created: 3/6/2012 10:29:02 AM
Modified: 3/6/2012 11:03:13 AM

Electrophoresis File Run Summary



Instrument Information:
 Instrument Name: DE13701086 Firmware: C.01.069
 Serial#: DE13701086 Type: G2938B

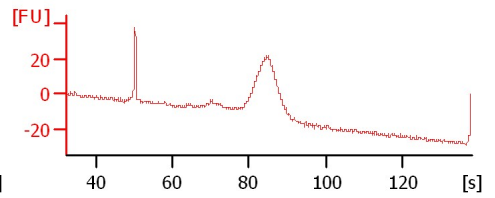
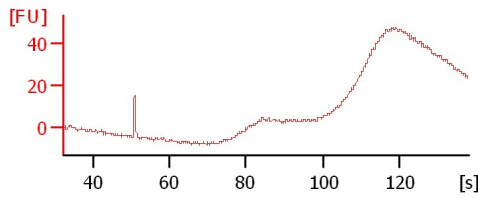
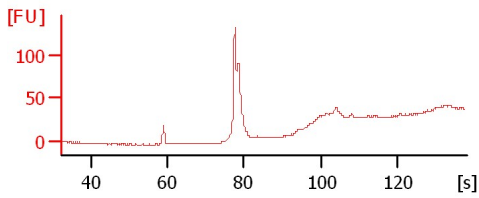
Assay Information:
 Assay Origin Path: C:\Program Files\Agilent\2100 bioanalyzer\2100 expert\assays\dsDNA\High Sensitivity DNA.xsy
 Assay Class: High Sensitivity DNA Assay
 Version: 1.03
 Assay Comments: Copyright © 2003-2010 Agilent Technologies

Chip Information:
 Chip Lot #:
 Reagent Kit Lot #:
 Chip Comments:

NT2 DRIP 16 E

NT2 DRIP 16 I

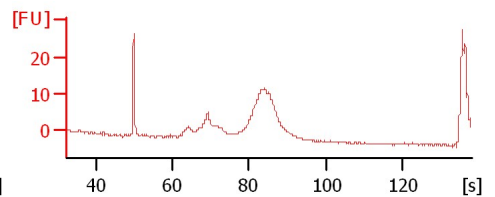
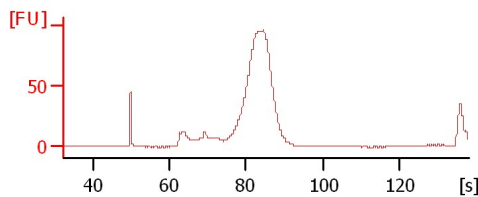
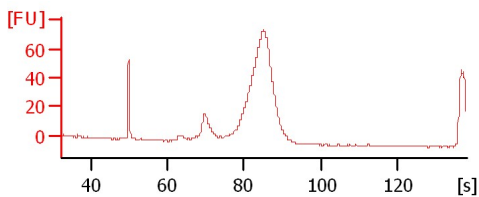
AGS4 5RE



AGS4 McrBc

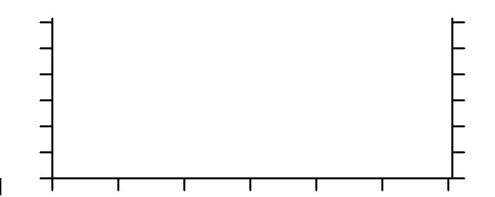
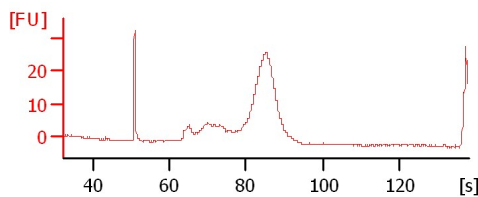
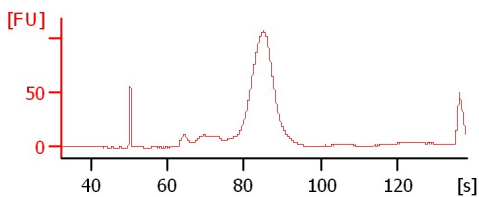
AGS2 McrBc

AGS2 5RE



HF57 McrBc

HF57 5RE



Assay Class: High Sensitivity DNA Assay
Data Path: C:\...ents and Settings\Bioanalyzer\2012-03-06\2012-03-06_002.xad

Created: 3/6/2012 10:29:02 AM
Modified: 3/6/2012 11:03:13 AM

Electrophoresis File Run Summary (Chip Summary)

Sample Name	Sample Comment	Rest. Digest	Status	Observation	Result Label	Result Color
NT2 DRIP 16 E		<input type="checkbox"/>	✓			
NT2 DRIP 16 I		<input type="checkbox"/>	✓			
AGS4 5RE		<input type="checkbox"/>	✓			
AGS4 McrBc		<input type="checkbox"/>	✓			
AGS2 McrBc		<input type="checkbox"/>	✓			
AGS2 5RE		<input type="checkbox"/>	✓			
HF57 McrBc		<input type="checkbox"/>	✓			
HF57 5RE		<input type="checkbox"/>	✓			
		<input type="checkbox"/>	✗			
		<input type="checkbox"/>	✗			
		<input type="checkbox"/>	✗			
Ladder		<input type="checkbox"/>	✓			

Chip Lot #

Reagent Kit Lot #

Chip Comments :

Assay Class: High Sensitivity DNA Assay
Data Path: C:\...ents and Settings\Bioanalyzer\2012-03-06\2012-03-06_002.xad

Created: 3/6/2012 10:29:02 AM
Modified: 3/6/2012 11:03:13 AM

Electrophoresis Assay Details

General Analysis Settings

Number of Available Sample and Ladder Wells (Max.) : 12
Minimum Visible Range [s] : 32
Maximum Visible Range [s] : 138
Start Analysis Time Range [s] : 33
End Analysis Time Range [s] : 137.5
Ladder Concentration [pg/μl] : 1950
Uses Standard Area for Ladder Fragments
Lower Marker Concentration [pg/μl] : 125
Upper Marker Concentration [pg/μl] : 75
Used Upper Marker for Quantitation
Standard Curve Fit is Point to Point
Show Data Aligned to Lower and Upper Marker

Integrator Settings

Integration Start Time [s] : 33.05
Integration End Time [s] : 137
Slope Threshold : 0.8
Height Threshold [FU] : 5
Area Threshold : 0.1
Width Threshold [s] : 0.6
Baseline Plateau [s] : 0.5

Filter Settings

Filter Width [s] : 0.5
Polynomial Order : 4

Ladder

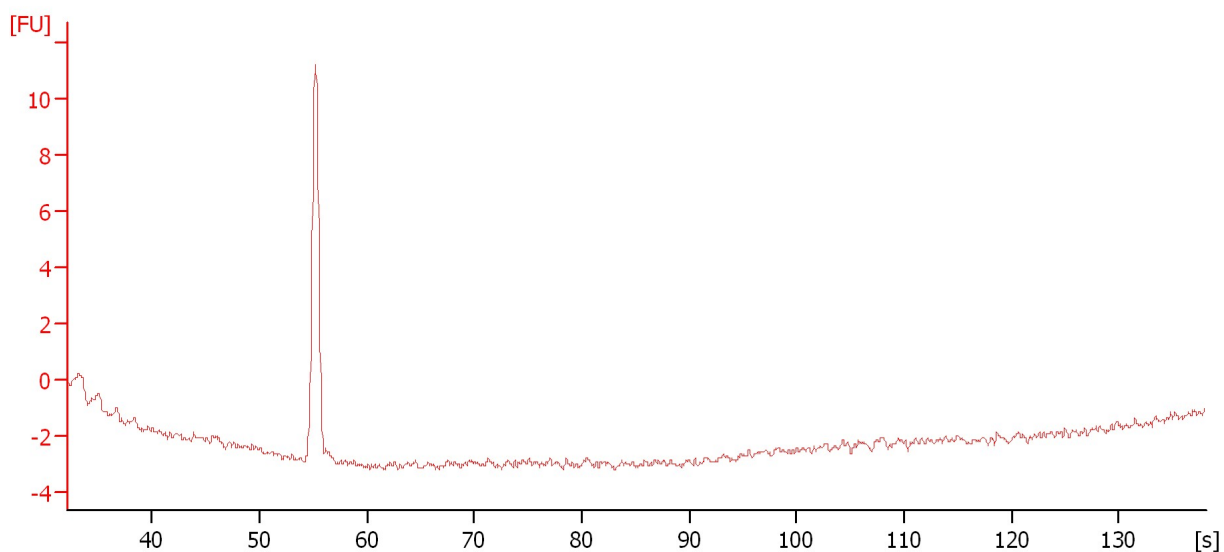
Ladder Peak	Size	Area
1	35	160
2	50	210
3	100	208
4	150	221
5	200	242
6	300	270
7	400	305
8	500	306
9	600	336
10	700	321
11	1000	366
12	2000	413
13	3000	411
14	7000	400
15	10380	214

Assay Class: High Sensitivity DNA Assay
Data Path: C:\...ents and Settings\Bioanalyzer\2012-03-06\2012-03-06_002.xad

Created: 3/6/2012 10:29:02 AM
Modified: 3/6/2012 11:03:13 AM

Electropherogram Summary

Ladder



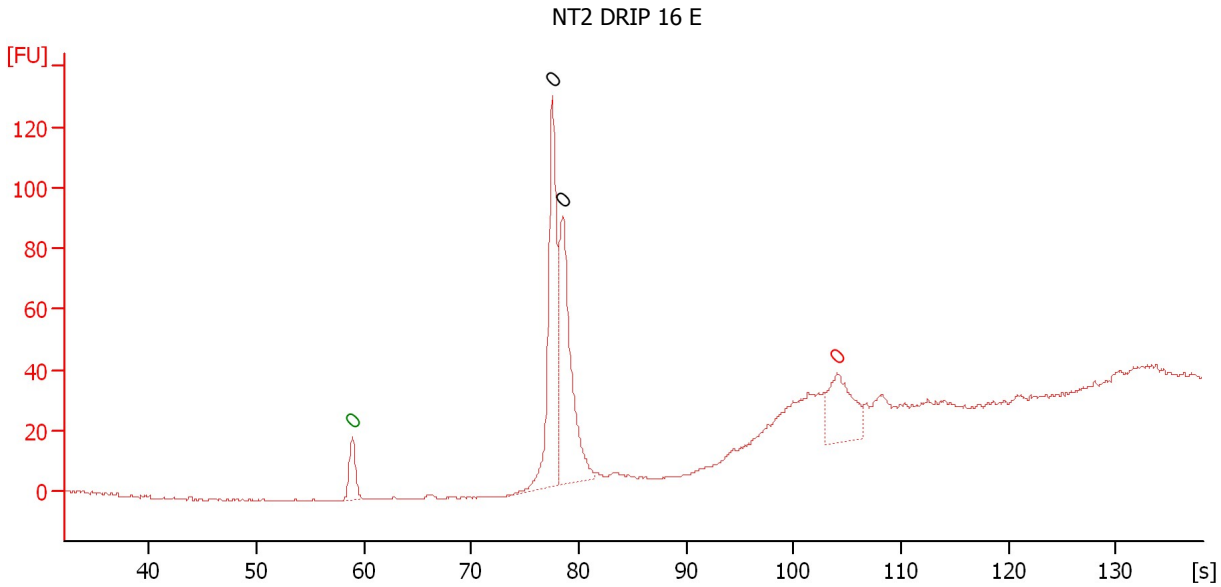
Overall Results for Ladder

Noise: 0.2

Assay Class: High Sensitivity DNA Assay
Data Path: C:\...ents and Settings\Bioanalyzer\2012-03-06\2012-03-06_002.xad

Created: 3/6/2012 10:29:02 AM
Modified: 3/6/2012 11:03:13 AM

Electropherogram Summary Continued ...



Setpoint Deviations for sample 1 : NT2 DRIP 16 E

Height Threshold [FU] : 20

Overall Results for sample 1 : NT2 DRIP 16 E

Number of peaks found: 0 Noise: 0.2

Peak table for sample 1 : NT2 DRIP 16 E

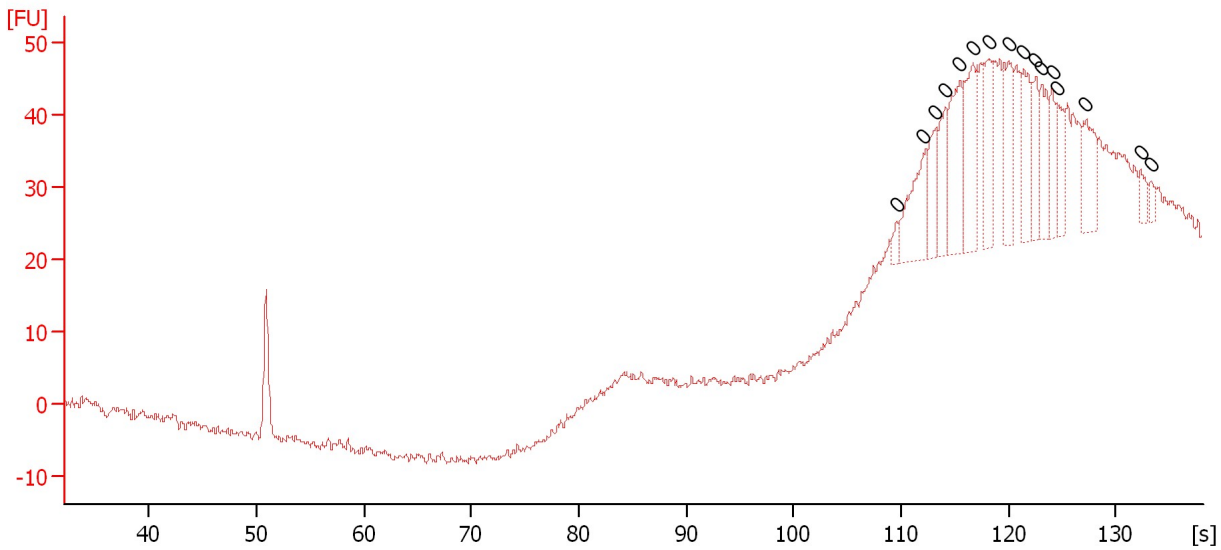
Peak	Size [bp]	Conc. [pg/μl]	Molarity [pmol/l]	Observations
1	0	0.00	0.0	Lower Marker
2	0	0.00	0.0	
3	0	0.00	0.0	
4	0	0.00	0.0	excluded peak

Assay Class: High Sensitivity DNA Assay
 Data Path: C:\...ents and Settings\Bioanalyzer\2012-03-06\2012-03-06_002.xad

Created: 3/6/2012 10:29:02 AM
 Modified: 3/6/2012 11:03:13 AM

Electropherogram Summary Continued ...

NT2 DRIP 16 I



Overall Results for sample 2 : NT2 DRIP 16 I

Number of peaks found: 0 Noise: 0.7

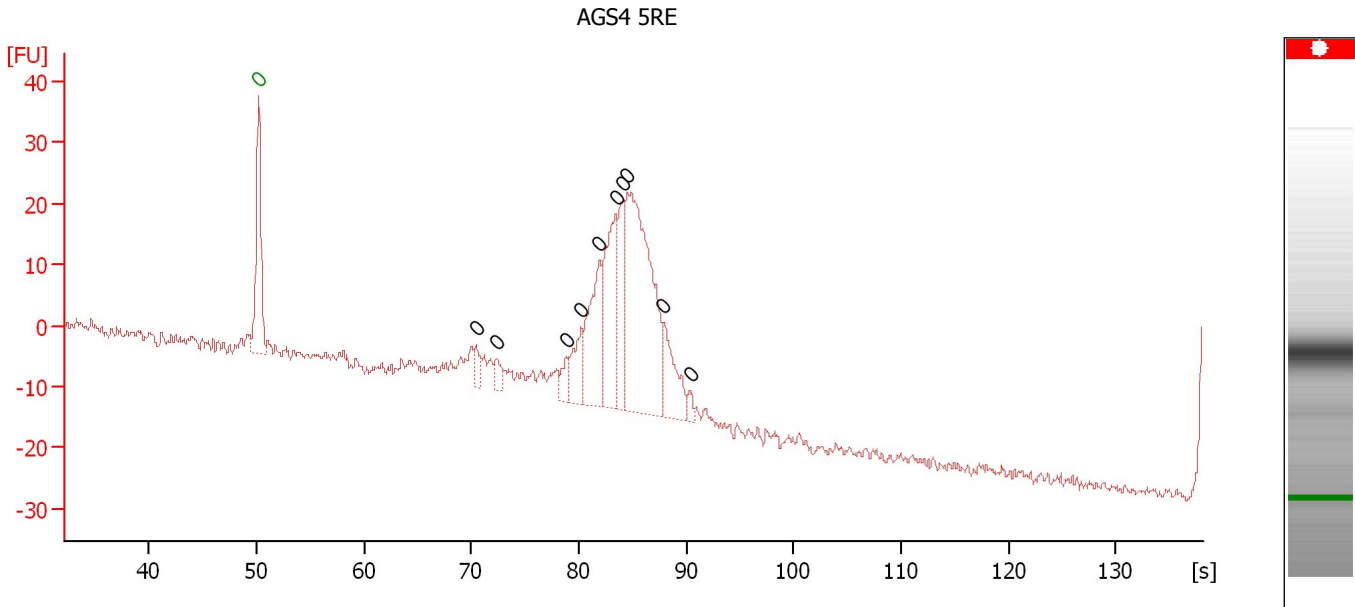
Peak table for sample 2 : NT2 DRIP 16 I

Peak	Size [bp]	Conc. [pg/μl]	Molarity [pmol/l]	Observations
1	0	0.00	0.0	
2	0	0.00	0.0	
3	0	0.00	0.0	
4	0	0.00	0.0	
5	0	0.00	0.0	
6	0	0.00	0.0	
7	0	0.00	0.0	
8	0	0.00	0.0	
9	0	0.00	0.0	
10	0	0.00	0.0	
11	0	0.00	0.0	
12	0	0.00	0.0	
13	0	0.00	0.0	
14	0	0.00	0.0	
15	0	0.00	0.0	
16	0	0.00	0.0	

Assay Class: High Sensitivity DNA Assay
Data Path: C:\...ents and Settings\Bioanalyzer\2012-03-06\2012-03-06_002.xad

Created: 3/6/2012 10:29:02 AM
Modified: 3/6/2012 11:03:13 AM

Electropherogram Summary Continued ...



Overall Results for sample 3 : AGS4 5RE

Number of peaks found: 0 Noise: 1.0

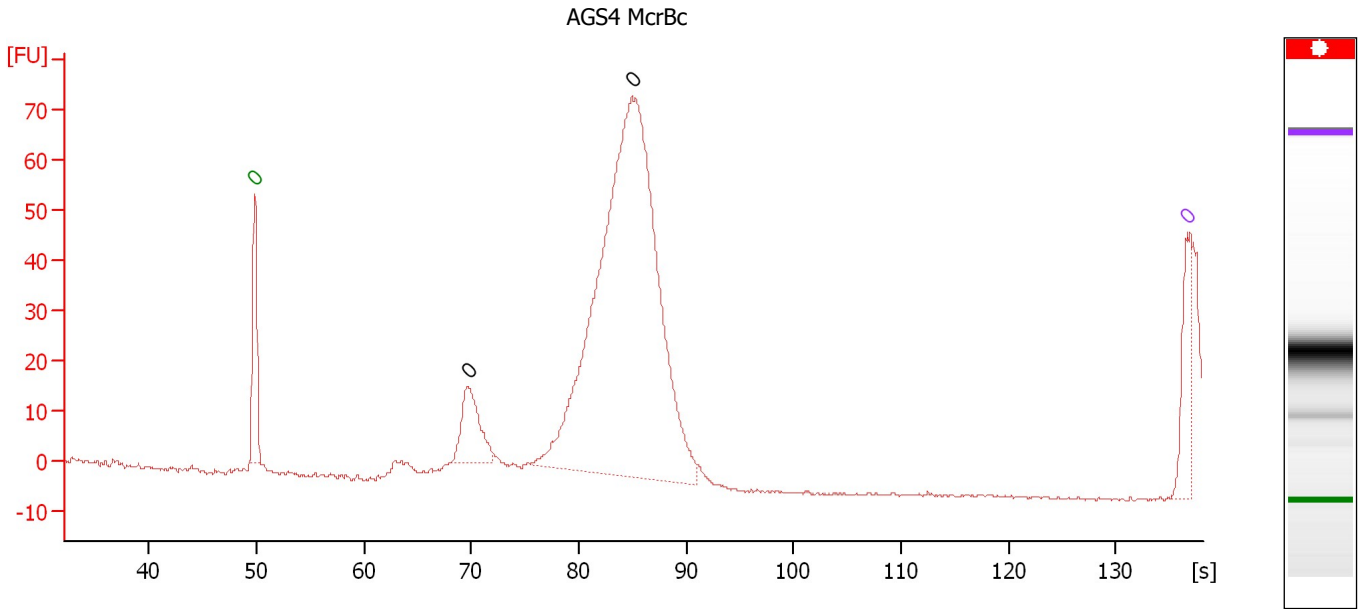
Peak table for sample 3 : AGS4 5RE

Peak	Size [bp]	Conc. [pg/μl]	Molarity [pmol/l]	Observations
1	0	0.00	0.0	Lower Marker
2	0	0.00	0.0	
3	0	0.00	0.0	
4	0	0.00	0.0	
5	0	0.00	0.0	
6	0	0.00	0.0	
7	0	0.00	0.0	
8	0	0.00	0.0	
9	0	0.00	0.0	
10	0	0.00	0.0	
11	0	0.00	0.0	

Assay Class: High Sensitivity DNA Assay
Data Path: C:\...ents and Settings\Bioanalyzer\2012-03-06\2012-03-06_002.xad

Created: 3/6/2012 10:29:02 AM
Modified: 3/6/2012 11:03:13 AM

Electropherogram Summary Continued ...



Overall Results for sample 4 : AGS4 McrBc

Number of peaks found: 0 Noise: 0.3

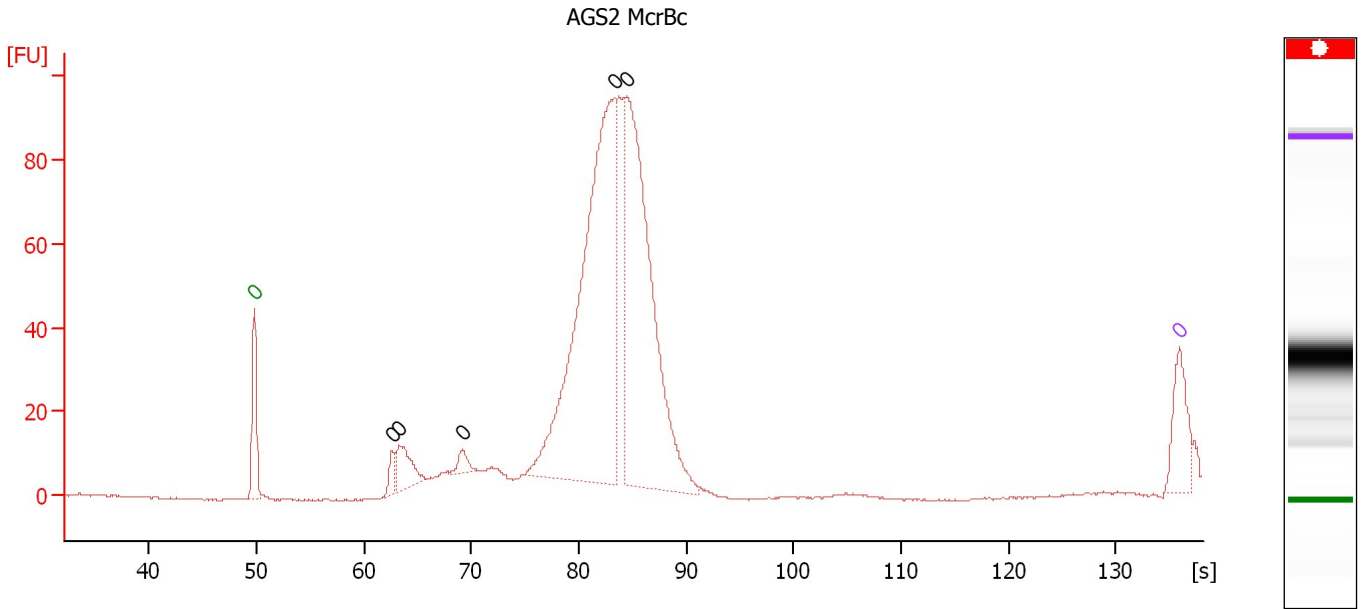
Peak table for sample 4 : AGS4 McrBc

Peak	Size [bp]	Conc. [pg/μl]	Molarity [pmol/l]	Observations
1	0	0.00	0.0	Lower Marker
2	0	0.00	0.0	
3	0	0.00	0.0	
4	0	0.00	0.0	Upper Marker

Assay Class: High Sensitivity DNA Assay
Data Path: C:\...ents and Settings\Bioanalyzer\2012-03-06\2012-03-06_002.xad

Created: 3/6/2012 10:29:02 AM
Modified: 3/6/2012 11:03:13 AM

Electropherogram Summary Continued ...



Overall Results for sample 5 : AGS2 McrBc

Number of peaks found: 0 Noise: 0.2

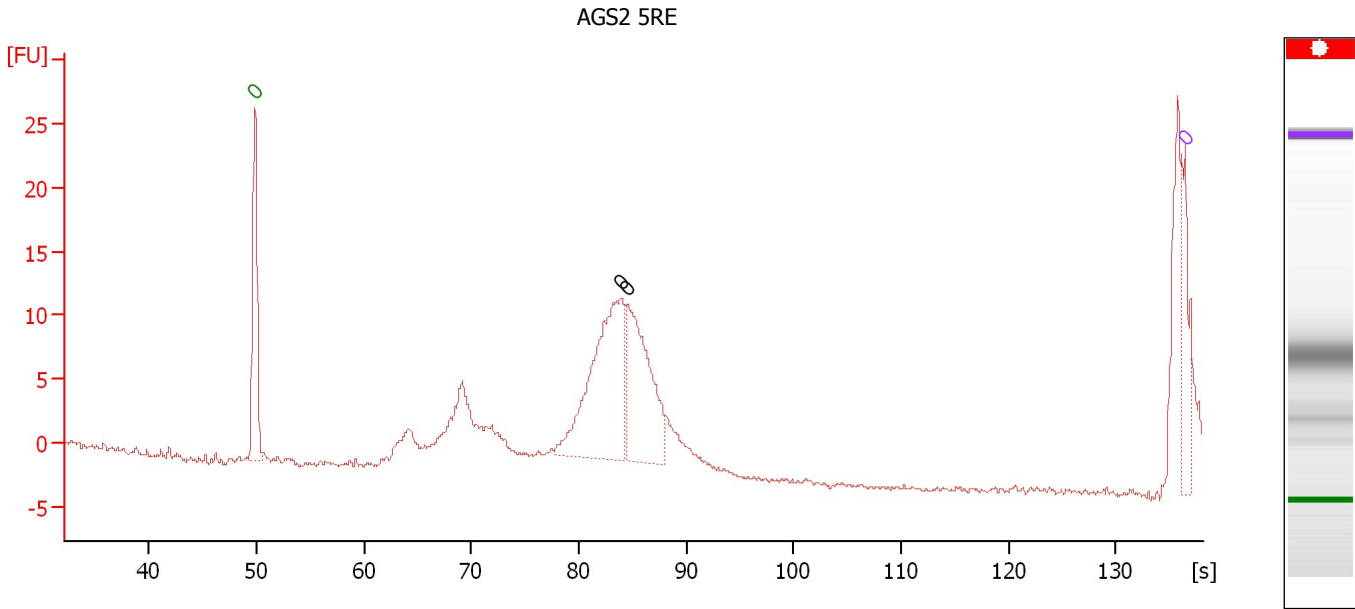
Peak table for sample 5 : AGS2 McrBc

Peak	Size [bp]	Conc. [pg/μl]	Molarity [pmol/l]	Observations
1	0	0.00	0.0	Lower Marker
2	0	0.00	0.0	
3	0	0.00	0.0	
4	0	0.00	0.0	
5	0	0.00	0.0	
6	0	0.00	0.0	
7	0	0.00	0.0	Upper Marker

Assay Class: High Sensitivity DNA Assay
Data Path: C:\...ents and Settings\Bioanalyzer\2012-03-06\2012-03-06_002.xad

Created: 3/6/2012 10:29:02 AM
Modified: 3/6/2012 11:03:13 AM

Electropherogram Summary Continued ...



Overall Results for sample 6 : AGS2 5RE

Number of peaks found: 0 Noise: 0.2

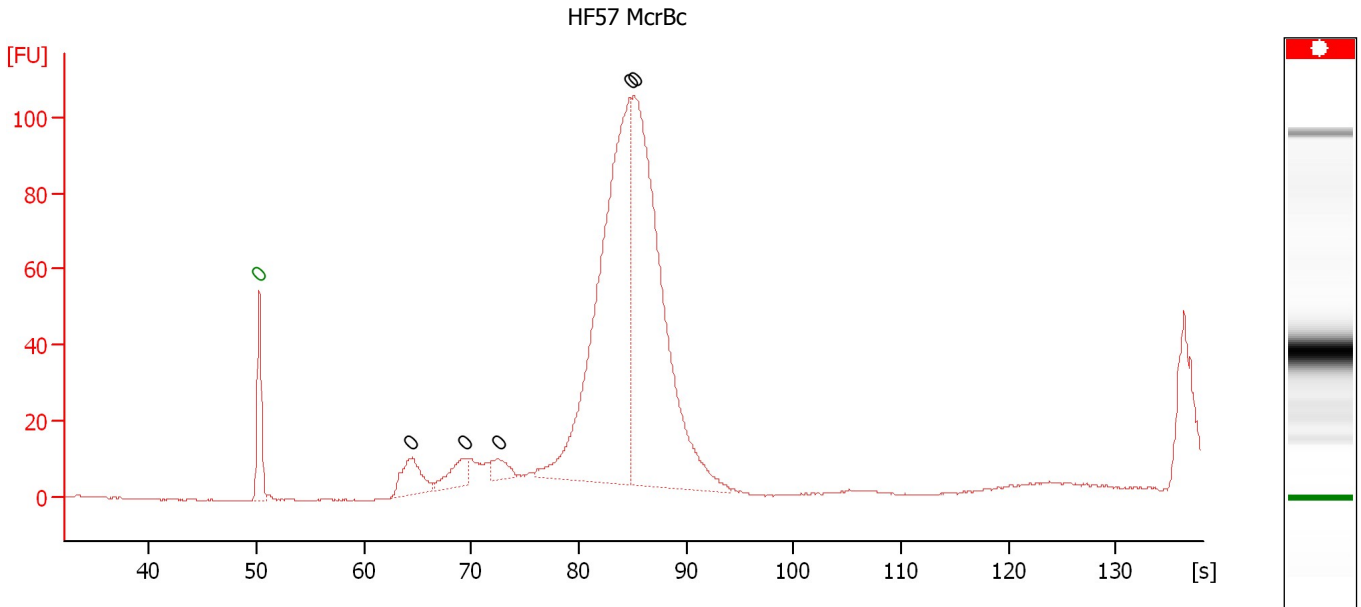
Peak table for sample 6 : AGS2 5RE

Peak	Size [bp]	Conc. [pg/μl]	Molarity [pmol/l]	Observations
1	0	0.00	0.0	Lower Marker
2	0	0.00	0.0	
3	0	0.00	0.0	
4	0	0.00	0.0	Upper Marker

Assay Class: High Sensitivity DNA Assay
 Data Path: C:\...ents and Settings\Bioanalyzer\2012-03-06\2012-03-06_002.xad

Created: 3/6/2012 10:29:02 AM
 Modified: 3/6/2012 11:03:13 AM

Electropherogram Summary Continued ...



Overall Results for sample 7 : HF57 McrBc

Number of peaks found: 0 Noise: 0.2

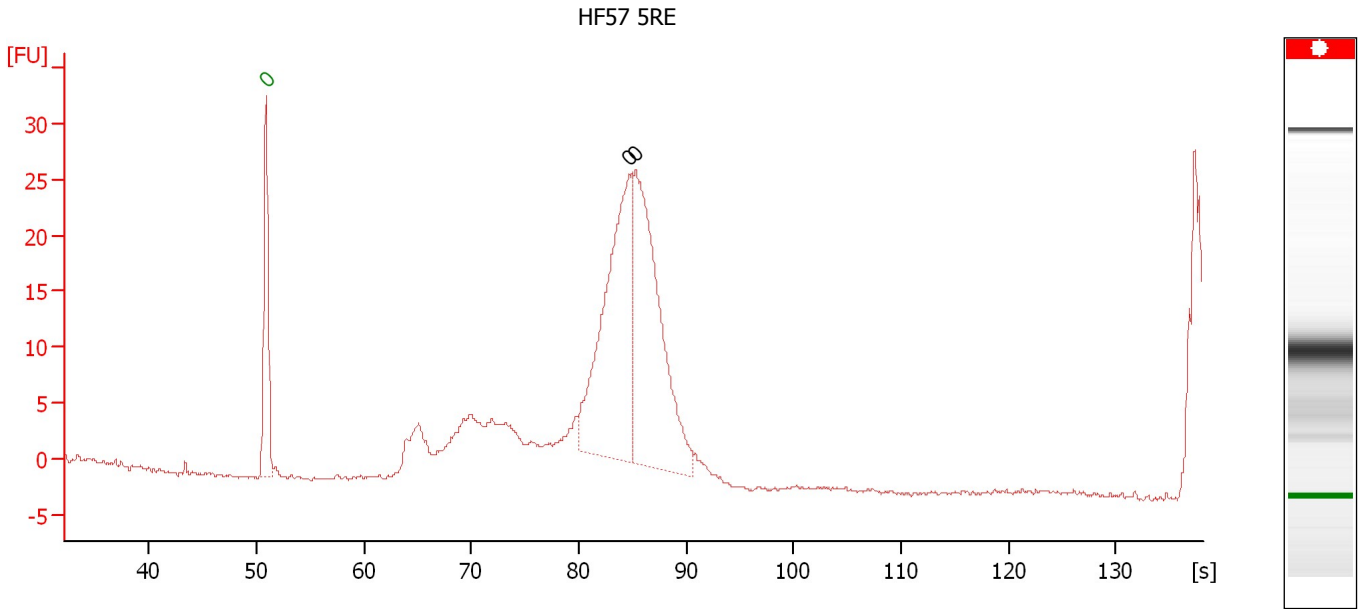
Peak table for sample 7 : HF57 McrBc

Peak	Size [bp]	Conc. [pg/μl]	Molarity [pmol/l]	Observations
1	0	0.00	0.0	Lower Marker
2	0	0.00	0.0	
3	0	0.00	0.0	
4	0	0.00	0.0	
5	0	0.00	0.0	
6	0	0.00	0.0	

Assay Class: High Sensitivity DNA Assay
Data Path: C:\...ents and Settings\Bioanalyzer\2012-03-06\2012-03-06_002.xad

Created: 3/6/2012 10:29:02 AM
Modified: 3/6/2012 11:03:13 AM

Electropherogram Summary Continued ...



Overall Results for sample 8 : HF57 5RE

Number of peaks found: 0 Noise: 0.2

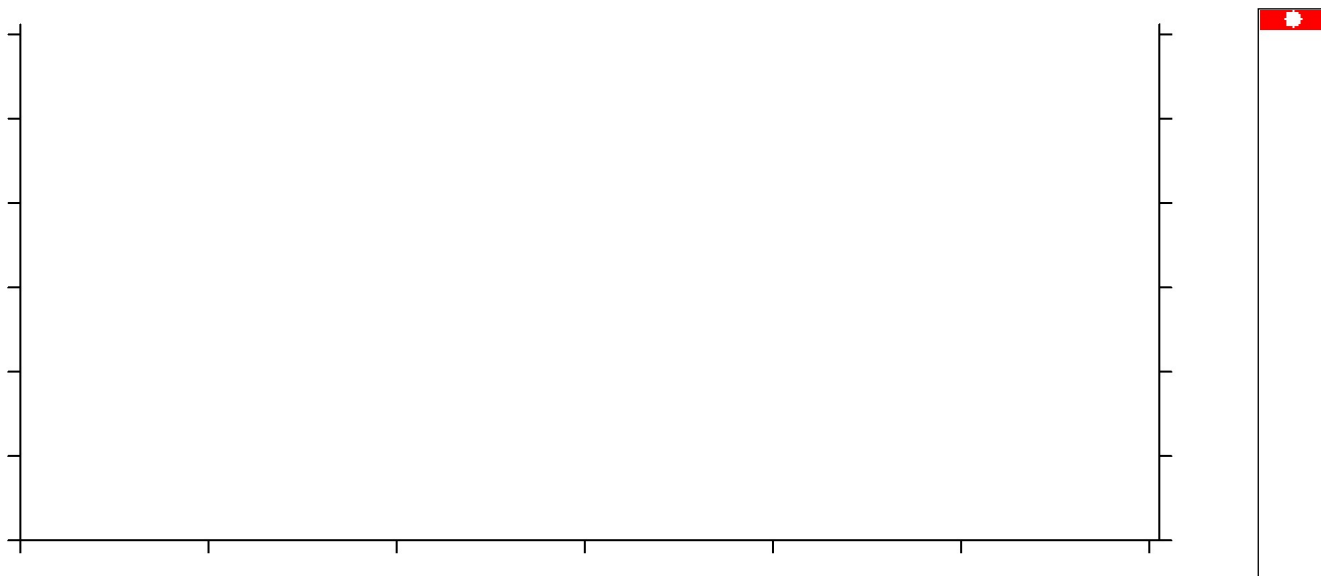
Peak table for sample 8 : HF57 5RE

Peak	Size [bp]	Conc. [pg/μl]	Molarity [pmol/l]	Observations
1	0	0.00	0.0	Lower Marker
2	0	0.00	0.0	
3	0	0.00	0.0	

Assay Class: High Sensitivity DNA Assay
Data Path: C:\...ents and Settings\Bioanalyzer\2012-03-06\2012-03-06_002.xad

Created: 3/6/2012 10:29:02 AM
Modified: 3/6/2012 11:03:13 AM

Electropherogram Summary Continued ...



Setpoint Deviations for sample 9 : -

End Analysis Time Range [s] : 17.6

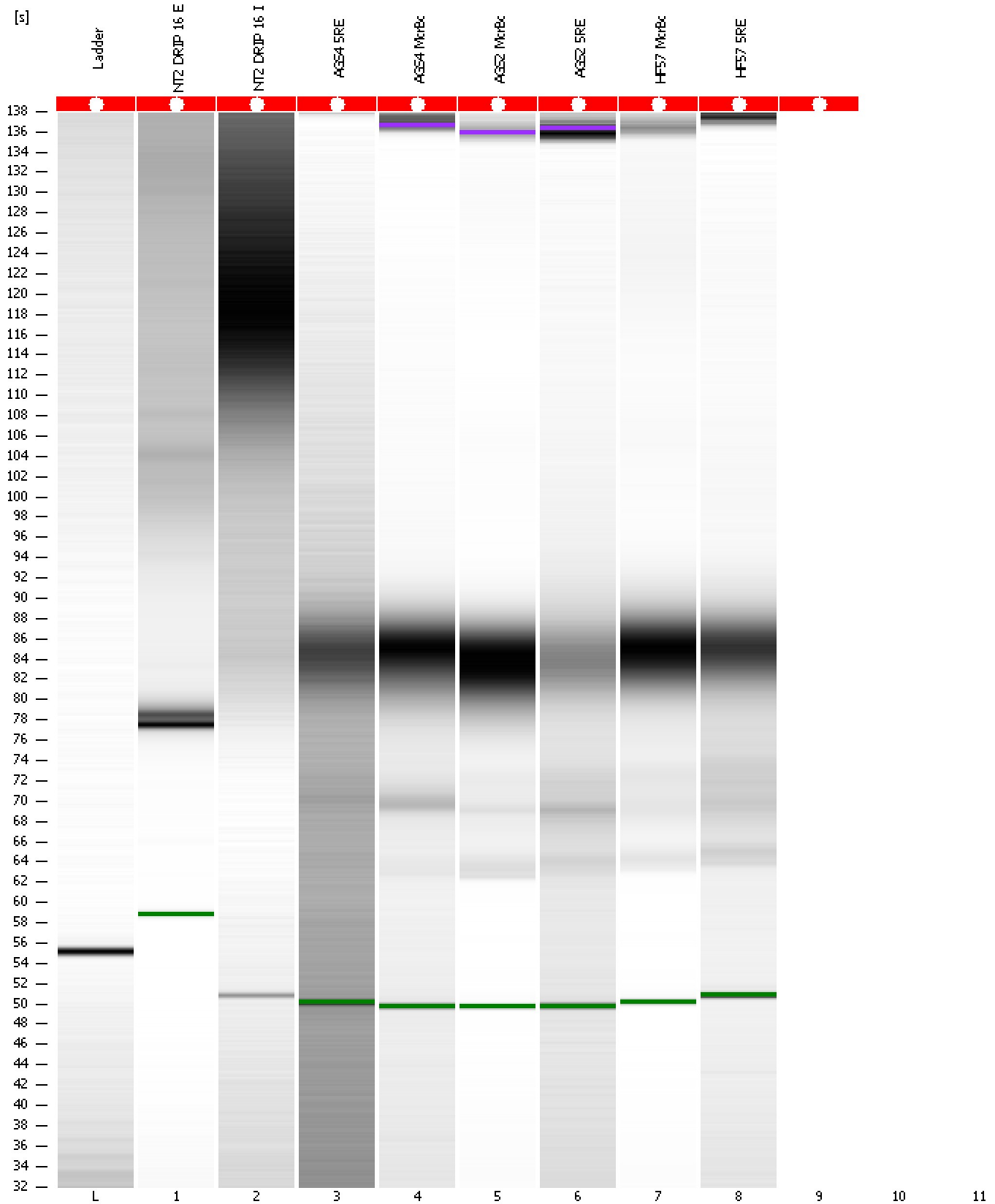
Overall Results for sample 9 : -

Noise: 1.2

Assay Class: High Sensitivity DNA Assay
Data Path: C:\...ents and Settings\Bioanalyzer\2012-03-06\2012-03-06_002.xad

Created: 3/6/2012 10:29:02 AM
Modified: 3/6/2012 11:03:13 AM

Gel Image



Assay Class: High Sensitivity DNA Assay
Data Path: C:\...ents and Settings\Bioanalyzer\2012-03-06\2012-03-06_002.xad

Created: 3/6/2012 10:29:02 AM
Modified: 3/6/2012 11:03:13 AM

Invalid Samples

Sample 10 has not been run, no results available.

Sample 11 has not been run, no results available.

Assay Class: High Sensitivity DNA Assay
 Data Path: C:\...ents and Settings\Bioanalyzer\2012-03-06\2012-03-06_002.xad

Created: 3/6/2012 10:29:02 AM
 Modified: 3/6/2012 11:03:13 AM

Run Logbook

Description	Number	Source	Category	Sub Category	Time	Time Zone	User	Host
Run aborted on port 1		Instrument	Run		3/6/2012 11:02:29 AM	(GMT --08:00) Pacific Standard Time	UC Davis	D8XSMGH1
Run started on port 1 (File: C:\Documents and Settings\Bioanalyzer\2012-03-06\2012-03-06_002.xad)		Instrument	Run		3/6/2012 10:29:07 AM	(GMT --08:00) Pacific Standard Time	UC Davis	D8XSMGH1
Product Number : G2938B		Instrument	Run		3/6/2012 10:29:07 AM	(GMT --08:00) Pacific Standard Time	UC Davis	D8XSMGH1
Name :		Instrument	Run		3/6/2012 10:29:07 AM	(GMT --08:00) Pacific Standard Time	UC Davis	D8XSMGH1
Vendor : Agilent Technologies		Instrument	Run		3/6/2012 10:29:07 AM	(GMT --08:00) Pacific Standard Time	UC Davis	D8XSMGH1
Serial# : DE13701086		Instrument	Run		3/6/2012 10:29:07 AM	(GMT --08:00) Pacific Standard Time	UC Davis	D8XSMGH1
Firmware : C.01.069		Instrument	Run		3/6/2012 10:29:07 AM	(GMT --08:00) Pacific Standard Time	UC Davis	D8XSMGH1
Cartridge : Electrode		Instrument	Run		3/6/2012 10:29:07 AM	(GMT --08:00) Pacific Standard Time	UC Davis	D8XSMGH1