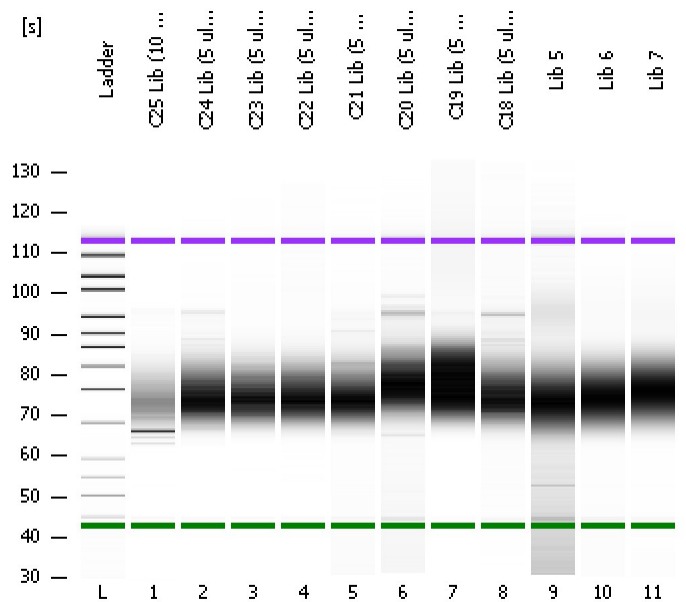


Assay Class: High Sensitivity DNA Assay
Data Path: C:\...ents and Settings\Bioanalyzer\2012-03-06\2012-03-06_004.xad

Created: 3/6/2012 12:24:51 PM
Modified: 3/6/2012 1:06:11 PM

Electrophoresis File Run Summary



Instrument Information:
 Instrument Name: DE13701086 Firmware: C.01.069
 Serial#: DE13701086 Type: G2938B

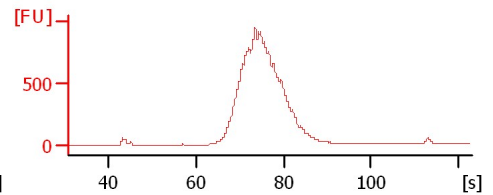
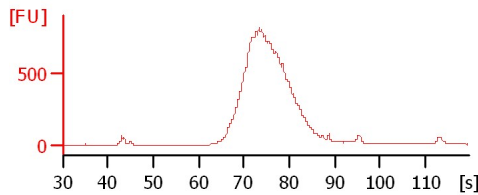
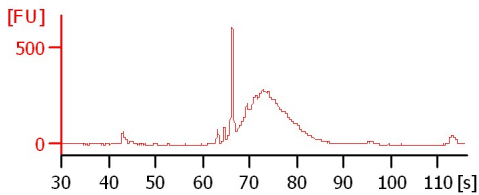
Assay Information:
 Assay Origin Path: C:\Program Files\Agilent\2100 bioanalyzer\2100 expert\assays\dsDNA\High Sensitivity DNA.xsy
 Assay Class: High Sensitivity DNA Assay
 Version: 1.03
 Assay Comments: Copyright © 2003-2010 Agilent Technologies

Chip Information:
 Chip Lot #: Reagent Kit Lot #: Chip Comments:

C25 Lib (10 ul, 10 cycles)

C24 Lib (5 ul, 10 cycles)

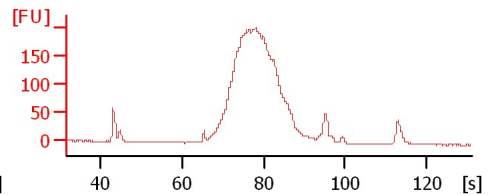
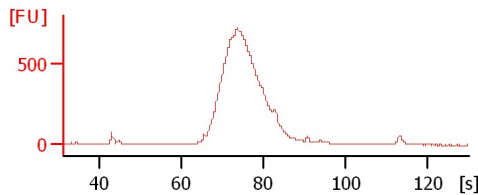
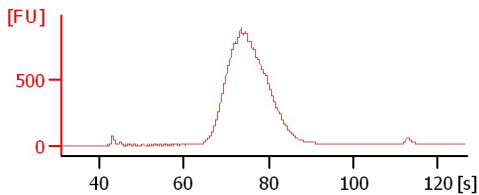
C23 Lib (5 ul, 10 cycles)



C22 Lib (5 ul, 10 cycles)

C21 Lib (5 ul, 10 cycles)

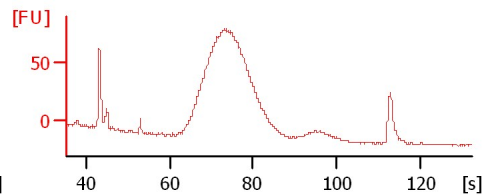
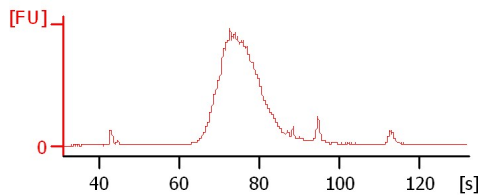
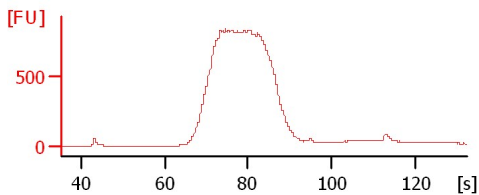
C20 Lib (5 ul, 10 cycles)



C19 Lib (5 ul, 10 cycles)

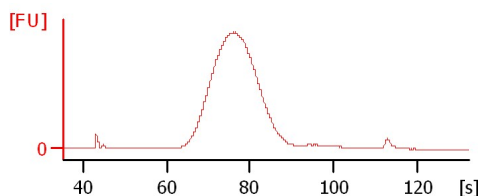
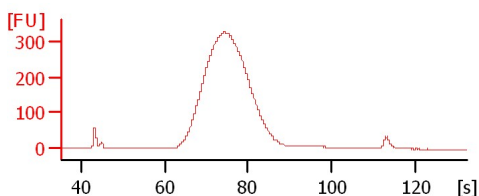
C18 Lib (5 ul, 10 cycles)

Lib 5



Lib 6

Lib 7



Assay Class: High Sensitivity DNA Assay
Data Path: C:\...ents and Settings\Bioanalyzer\2012-03-06\2012-03-06_004.xad

Created: 3/6/2012 12:24:51 PM
Modified: 3/6/2012 1:06:11 PM

Electrophoresis File Run Summary (Chip Summary)

Sample Name	Sample Comment	Rest. Digest	Status	Observation	Result Label	Result Color
C25 Lib (10 ul, 10 cycles)		<input type="checkbox"/>	✓			
C24 Lib (5 ul, 10 cycles)		<input type="checkbox"/>	✓			
C23 Lib (5 ul, 10 cycles)		<input type="checkbox"/>	✓			
C22 Lib (5 ul, 10 cycles)		<input type="checkbox"/>	✓			
C21 Lib (5 ul, 10 cycles)		<input type="checkbox"/>	✓			
C20 Lib (5 ul, 10 cycles)		<input type="checkbox"/>	✓			
C19 Lib (5 ul, 10 cycles)		<input type="checkbox"/>	✓			
C18 Lib (5 ul, 10 cycles)		<input type="checkbox"/>	✓			
Lib 5		<input type="checkbox"/>	✓			
Lib 6		<input type="checkbox"/>	✓			
Lib 7		<input type="checkbox"/>	✓			
Ladder		<input type="checkbox"/>	✓			

Chip Lot #

Reagent Kit Lot #

Chip Comments :

Assay Class: High Sensitivity DNA Assay
Data Path: C:\...ents and Settings\Bioanalyzer\2012-03-06\2012-03-06_004.xad

Created: 3/6/2012 12:24:51 PM
Modified: 3/6/2012 1:06:11 PM

Electrophoresis Assay Details

General Analysis Settings

Number of Available Sample and Ladder Wells (Max.) : 12
Minimum Visible Range [s] : 32
Maximum Visible Range [s] : 138
Start Analysis Time Range [s] : 33
End Analysis Time Range [s] : 137.5
Ladder Concentration [pg/μl] : 1950
Uses Standard Area for Ladder Fragments
Lower Marker Concentration [pg/μl] : 125
Upper Marker Concentration [pg/μl] : 75
Used Upper Marker for Quantitation
Standard Curve Fit is Point to Point
Show Data Aligned to Lower and Upper Marker

Integrator Settings

Integration Start Time [s] : 33.05
Integration End Time [s] : 137
Slope Threshold : 0.8
Height Threshold [FU] : 5
Area Threshold : 0.1
Width Threshold [s] : 0.6
Baseline Plateau [s] : 0.5

Filter Settings

Filter Width [s] : 0.5
Polynomial Order : 4

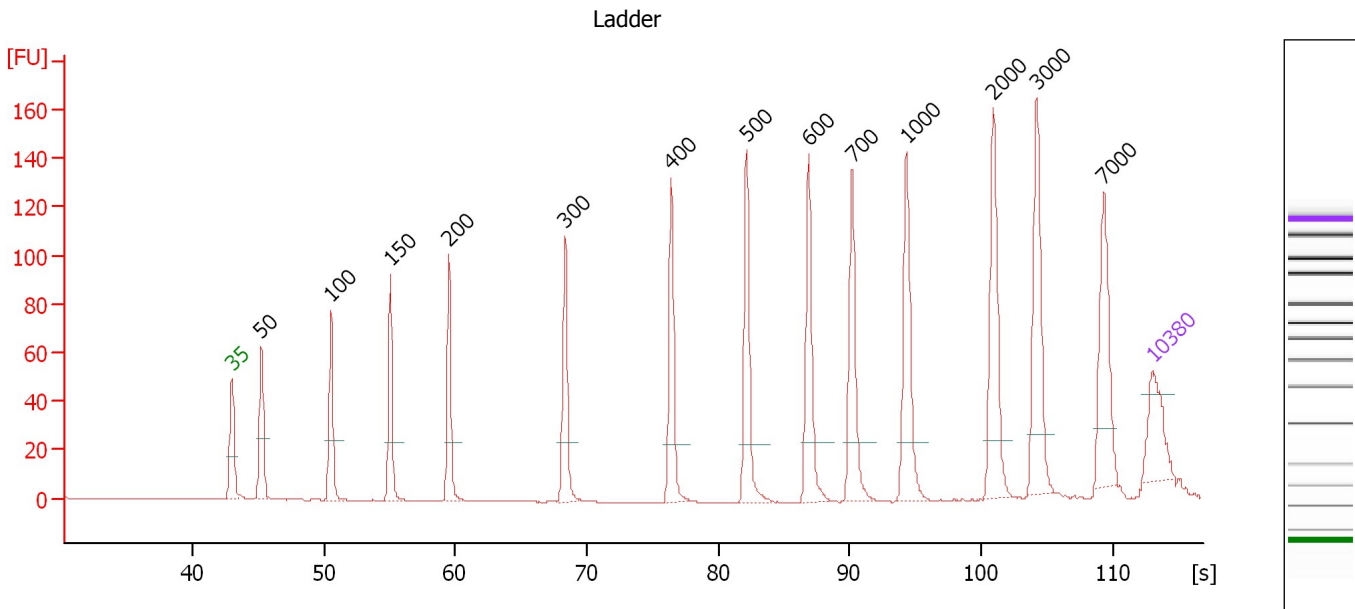
Ladder

Ladder Peak	Size	Area
1	35	160
2	50	210
3	100	208
4	150	221
5	200	242
6	300	270
7	400	305
8	500	306
9	600	336
10	700	321
11	1000	366
12	2000	413
13	3000	411
14	7000	400
15	10380	214

Assay Class: High Sensitivity DNA Assay
 Data Path: C:\...ents and Settings\Bioanalyzer\2012-03-06\2012-03-06_004.xad

Created: 3/6/2012 12:24:51 PM
 Modified: 3/6/2012 1:06:11 PM

Electropherogram Summary



Overall Results for Ladder

Noise: 0.2

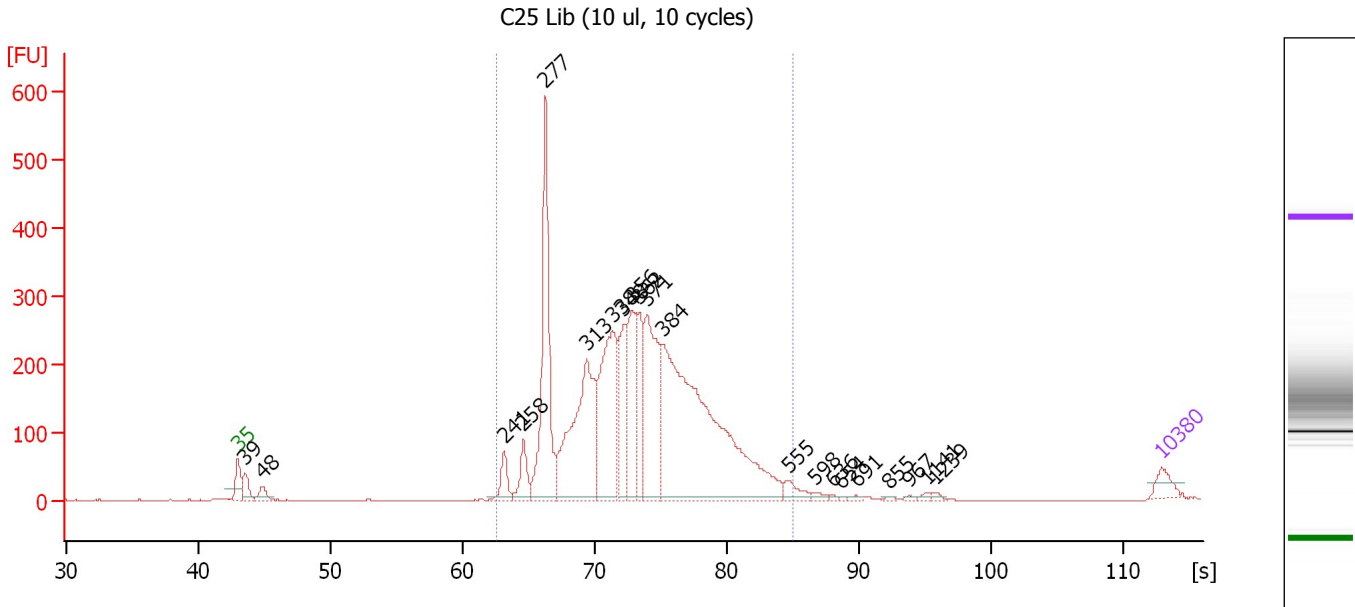
Peak table for Ladder

Peak	Size [bp]	Conc. [pg/μl]	Molarity [pmol/l]	Observations
1	35	125.00	5,411.3	Lower Marker
2	50	150.00	4,545.5	Ladder Peak
3	100	150.00	2,272.7	Ladder Peak
4	150	150.00	1,515.2	Ladder Peak
5	200	150.00	1,136.4	Ladder Peak
6	300	150.00	757.6	Ladder Peak
7	400	150.00	568.2	Ladder Peak
8	500	150.00	454.5	Ladder Peak
9	600	150.00	378.8	Ladder Peak
10	700	150.00	324.7	Ladder Peak
11	1,000	150.00	227.3	Ladder Peak
12	2,000	150.00	113.6	Ladder Peak
13	3,000	150.00	75.8	Ladder Peak
14	7,000	150.00	32.5	Ladder Peak
15	10,380	75.00	10.9	Upper Marker

Assay Class: High Sensitivity DNA Assay
 Data Path: C:\...ents and Settings\Bioanalyzer\2012-03-06\2012-03-06_004.xad

Created: 3/6/2012 12:24:51 PM
 Modified: 3/6/2012 1:06:11 PM

Electropherogram Summary Continued ...



Overall Results for sample 1 : C25 Lib (10 ul, 10 cycles)

Number of peaks found: 21 Corr. Area 1: 4,459.9
 Noise: 0.3

Peak table for sample 1 : C25 Lib (10 ul, 10 cycles)

Peak	Size [bp]	Conc. [pg/μl]	Molarity [pmol/l]	Observations
1	35	125.00	5,411.3	Lower Marker
2	39	137.11	5,353.7	
3	48	84.33	2,674.9	
4	241	163.64	1,026.8	
5	258	201.69	1,184.5	
6	277	1,272.30	6,964.2	
7	313	1,300.06	6,295.8	
8	338	1,048.81	4,706.4	
9	348	475.02	2,069.6	
10	356	569.74	2,425.9	
11	362	400.76	1,675.5	
12	371	864.85	3,536.7	
13	384	2,796.84	11,031.0	
14	555	90.69	247.6	
15	598	28.67	72.6	
16	636	9.34	22.2	
17	654	8.02	18.6	
18	691	14.98	32.9	
19	855	10.78	19.1	
20	967	10.73	16.8	
21	1,141	16.54	22.0	
22	1,239	15.60	19.1	
23	10,380	75.00	10.9	Upper Marker

Assay Class: High Sensitivity DNA Assay
Data Path: C:\...ents and Settings\Bioanalyzer\2012-03-06\2012-03-06_004.xad

Created: 3/6/2012 12:24:51 PM
Modified: 3/6/2012 1:06:11 PM

Electropherogram Summary Continued ...

... Region table for sample 1 :

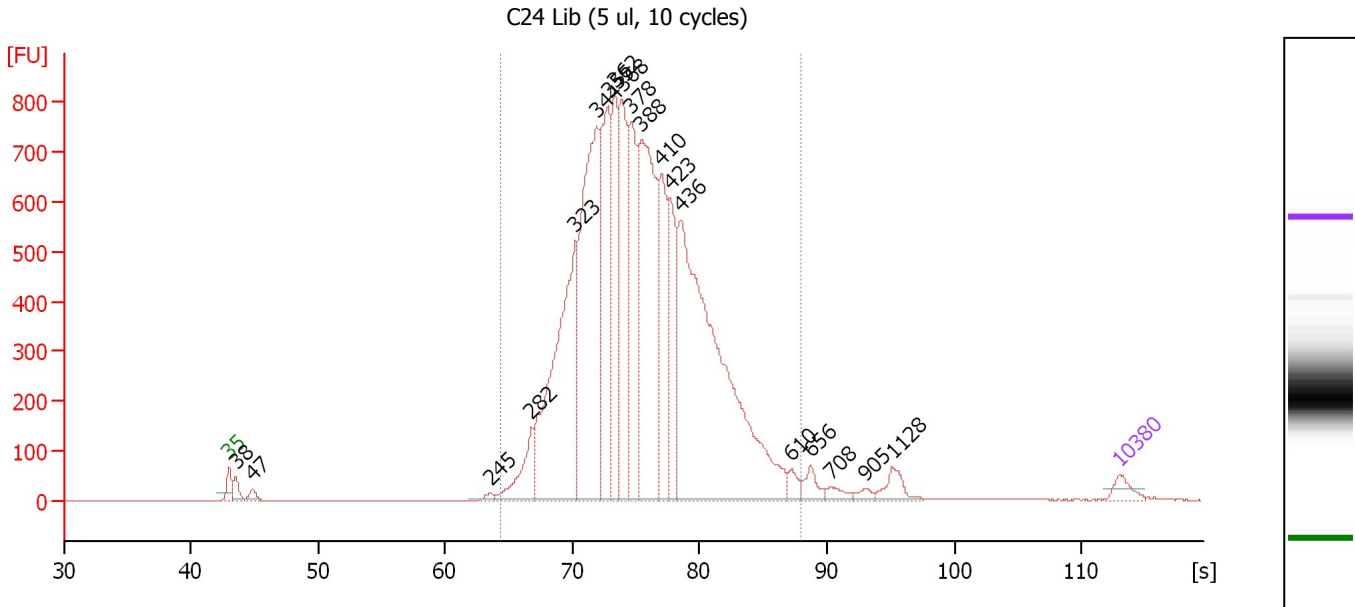
C25 Lib (10 ul, 10 cycles)

From [s]	Molarity [pmol/l]	Average Size [bp]	Conc. [pg/μl]	To [s]	Corr. Area % of Total	Size distribution in CV [%]	Color
62.56	38,753.2	363	8,876.52	85.06	4,459.9	97	17.8

Assay Class: High Sensitivity DNA Assay
 Data Path: C:\...ents and Settings\Bioanalyzer\2012-03-06\2012-03-06_004.xad

Created: 3/6/2012 12:24:51 PM
 Modified: 3/6/2012 1:06:11 PM

Electropherogram Summary Continued ...



Overall Results for sample 2 : C24 Lib (5 ul, 10 cycles)

Number of peaks found: 19 Corr. Area 1: 12,504.6
 Noise: 0.3

Peak table for sample 2 : C24 Lib (5 ul, 10 cycles)

Peak	Size [bp]	Conc. [pg/μl]	Molarity [pmol/l]	Observations
1	35	125.00	5,411.3	Lower Marker
2	38	128.92	5,089.0	
3	47	76.81	2,454.8	
4	245	37.85	233.7	
5	282	435.91	2,341.8	
6	323	2,537.88	11,896.0	
7	344	2,666.82	11,756.0	
8	355	1,499.14	6,403.3	
9	362	1,019.72	4,273.4	
10	368	1,268.84	5,218.9	
11	378	1,177.05	4,720.3	
12	388	2,263.23	8,842.8	
13	410	950.09	3,509.9	
14	423	814.59	2,919.9	
15	436	4,307.91	14,971.2	
16	610	87.13	216.3	
17	656	124.40	287.2	
18	708	72.41	154.9	
19	905	43.28	72.5	
20	1,128	134.20	180.3	
21	10,380	75.00	10.9	Upper Marker

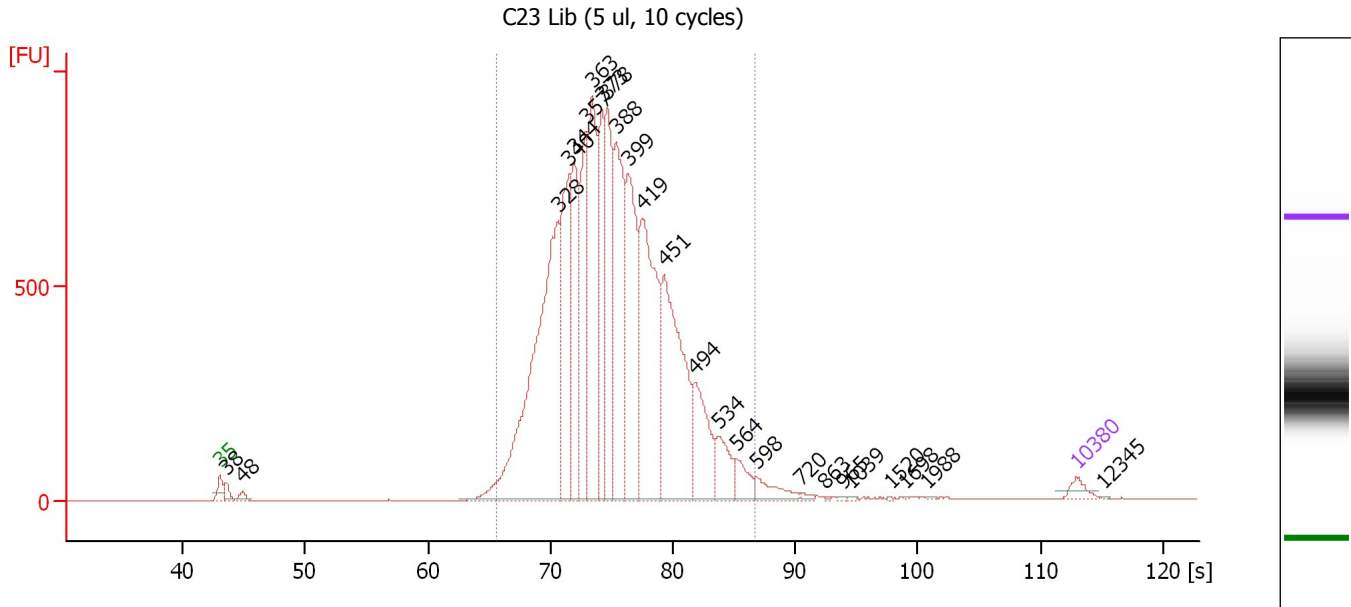
Region table for sample 2 : C24 Lib (5 ul, 10 cycles)

From [s]	Molarity [pmol/l]	Average Size [bp]	Conc. [pg/μl]	To [s]	Corr. Area	% of Total	Size distribution in CV [%]	Color
64.29	75,473.4	393	18,862.29	87.95	12,504.6	97	17.2	Blue

Assay Class: High Sensitivity DNA Assay
 Data Path: C:\...ents and Settings\Bioanalyzer\2012-03-06\2012-03-06_004.xad

Created: 3/6/2012 12:24:51 PM
 Modified: 3/6/2012 1:06:11 PM

Electropherogram Summary Continued ...



Overall Results for sample 3 : C23 Lib (5 ul, 10 cycles)

Number of peaks found: 25 Corr. Area 1: 13,159.8
 Noise: 0.5

Peak table for sample 3 : C23 Lib (5 ul, 10 cycles)

Peak	Size [bp]	Conc. [pg/μl]	Molarity [pmol/l]	Observations
1	35	125.00	5,411.3	Lower Marker
2	38	119.13	4,689.1	
3	48	72.84	2,322.2	
4	328	3,861.08	17,811.0	
5	340	1,455.72	6,490.2	
6	344	1,227.73	5,404.8	
7	357	1,265.59	5,376.7	
8	363	1,629.19	6,807.6	
9	373	1,082.40	4,397.9	
10	378	1,294.00	5,182.3	
11	388	1,589.96	6,216.2	
12	399	1,568.99	5,951.1	
13	419	2,117.46	7,655.4	
14	451	2,000.79	6,719.9	
15	494	755.96	2,319.4	
16	534	342.53	971.9	
17	564	210.59	565.4	
18	598	179.65	454.8	
19	720	25.09	52.8	
20	863	6.17	10.8	
21	965	6.73	10.6	
22	1,039	6.63	9.7	
23	1,520	3.38	3.4	
24	1,698	3.89	3.5	
25	1,988	6.11	4.7	
26	10,380	75.00	10.9	Upper Marker


Assay Class: High Sensitivity DNA Assay
Data Path: C:\...ents and Settings\Bioanalyzer\2012-03-06\2012-03-06_004.xad

Created: 3/6/2012 12:24:51 PM
Modified: 3/6/2012 1:06:11 PM

Electropherogram Summary Continued ...**... Peak table for sample 3 : C23 Lib (5 ul, 10 cycles)**

Peak	Size [bp]	Conc. [pg/μl]	Molarity [pmol/l]	Observations
27	12,345	0.00	0.0	

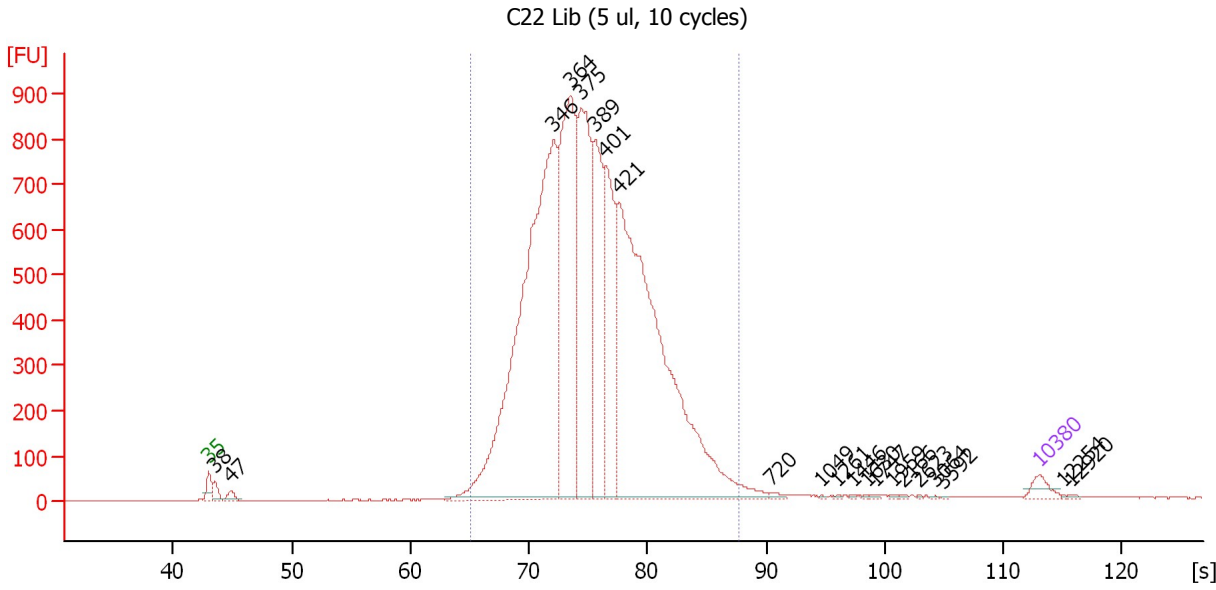
Region table for sample 3 : C23 Lib (5 ul, 10 cycles)

From [s]	Molarity [pmol/l]	Average Size [bp]	Conc. [pg/μl]	To [s]	Corr. Area % of Total	Size distribution in CV [%]	Color	
65.63	81,833.5	389	20,374.11	86.70	13,159.8	97	16.1	

Assay Class: High Sensitivity DNA Assay
 Data Path: C:\...ents and Settings\Bioanalyzer\2012-03-06\2012-03-06_004.xad

Created: 3/6/2012 12:24:51 PM
 Modified: 3/6/2012 1:06:11 PM

Electropherogram Summary Continued ...



Overall Results for sample 4 : C22 Lib (5 ul, 10 cycles)

Number of peaks found: 21 Corr. Area 1: 13,163.6
 Noise: 1.3

Peak table for sample 4 : C22 Lib (5 ul, 10 cycles)

Peak	Size [bp]	Conc. [pg/μl]	Molarity [pmol/l]	Observations
1	35	125.00	5,411.3	Lower Marker
2	38	100.54	3,974.7	
3	47	73.52	2,350.2	
4	346	5,811.91	25,445.2	
5	364	2,748.16	11,436.6	
6	375	2,140.45	8,653.5	
7	389	1,375.35	5,351.4	
8	401	1,336.24	5,049.7	
9	421	5,399.50	19,444.9	
10	720	26.69	56.1	
11	1,049	5.33	7.7	
12	1,261	5.93	7.1	
13	1,446	5.67	5.9	
14	1,630	5.76	5.4	
15	1,747	6.83	5.9	
16	1,959	7.53	5.8	
17	2,166	6.64	4.6	
18	2,623	4.06	2.3	
19	3,064	4.49	2.2	
20	3,592	3.47	1.5	
21	10,380	75.00	10.9	Upper Marker
22	12,254	0.00	0.0	
23	12,920	0.00	0.0	

Assay Class: High Sensitivity DNA Assay
Data Path: C:\...ents and Settings\Bioanalyzer\2012-03-06\2012-03-06_004.xad

Created: 3/6/2012 12:24:51 PM
Modified: 3/6/2012 1:06:11 PM

Electropherogram Summary Continued ...

... Region table for sample 4 :

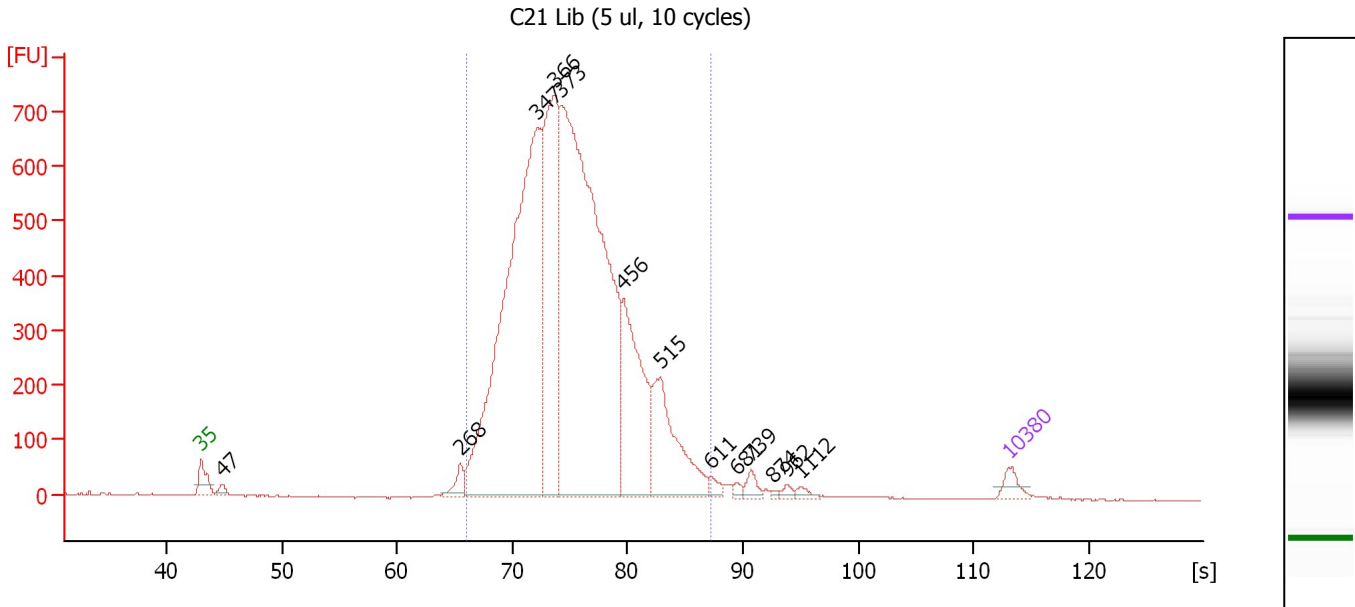
C22 Lib (5 ul, 10 cycles)

From [s]	Molarity [pmol/l]	Average Size [bp]	Conc. [pg/μl]	To [s]	Corr. Area % of Total	Size distribution in CV [%]	Color
65.06	74,751.5	392	18,699.99	87.62	13,163.6	97	16.6

Assay Class: High Sensitivity DNA Assay
 Data Path: C:\...ents and Settings\Bioanalyzer\2012-03-06\2012-03-06_004.xad

Created: 3/6/2012 12:24:51 PM
 Modified: 3/6/2012 1:06:11 PM

Electropherogram Summary Continued ...



Overall Results for sample 5 : C21 Lib (5 ul, 10 cycles)

Number of peaks found: 13 Corr. Area 1: 10,537.5
 Noise: 1.1

Peak table for sample 5 : C21 Lib (5 ul, 10 cycles)

Peak	Size [bp]	Conc. [pg/μl]	Molarity [pmol/l]	Observations
1	35	125.00	5,411.3	Lower Marker
2	47	53.50	1,709.1	
3	268	118.06	667.4	
4	347	4,723.17	20,594.6	
5	366	2,058.45	8,521.6	
6	373	5,479.72	22,262.6	
7	456	1,206.11	4,004.5	
8	515	888.75	2,614.2	
9	611	49.78	123.5	
10	681	33.38	74.3	
11	739	72.35	148.3	
12	874	12.39	21.5	
13	962	28.97	45.6	
14	1,112	32.94	44.9	
15	10,380	75.00	10.9	Upper Marker

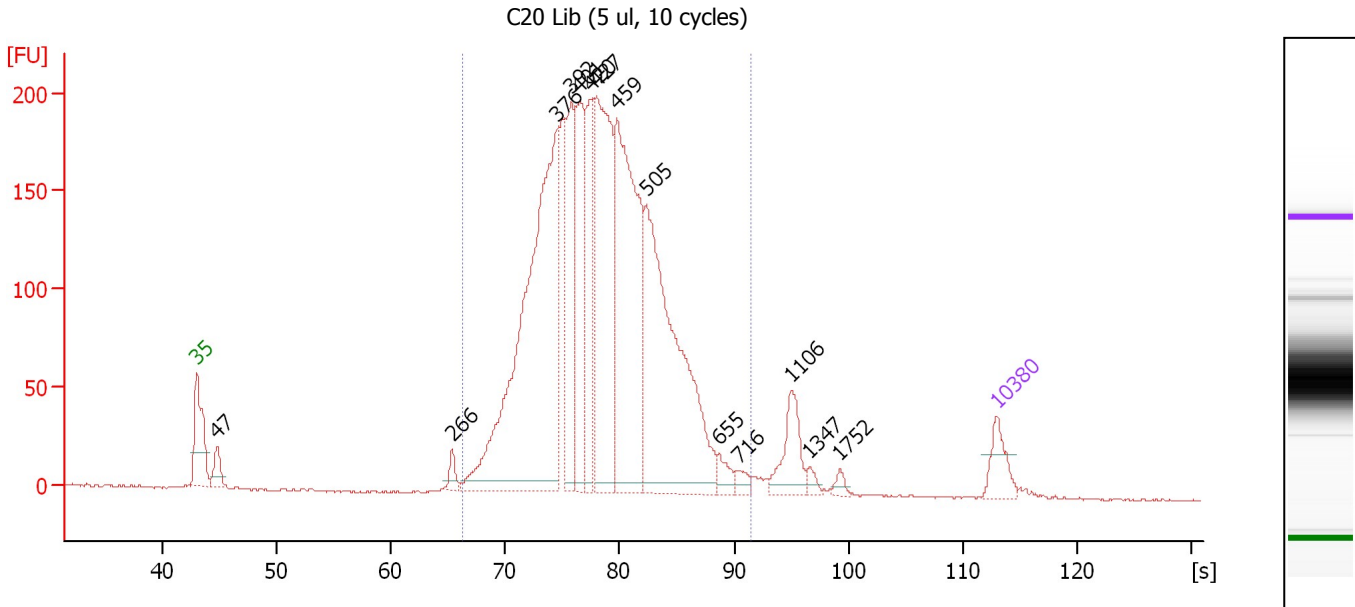
Region table for sample 5 : C21 Lib (5 ul, 10 cycles)

From [s]	Molarity [pmol/l]	Average Size [bp]	Conc. [pg/μl]	To [s]	Corr. Area	% of Total	Size distribution in CV [%]	Color
66.04	57,592.1	390	14,345.70	87.18	10,537.5	96	16.5	Blue

Assay Class: High Sensitivity DNA Assay
 Data Path: C:\...ents and Settings\Bioanalyzer\2012-03-06\2012-03-06_004.xad

Created: 3/6/2012 12:24:51 PM
 Modified: 3/6/2012 1:06:11 PM

Electropherogram Summary Continued ...



Overall Results for sample 6 : C20 Lib (5 ul, 10 cycles)

Number of peaks found: 14 Corr. Area 1: 3,325.7
 Noise: 0.6

Peak table for sample 6 : C20 Lib (5 ul, 10 cycles)

Peak	Size [bp]	Conc. [pg/μl]	Molarity [pmol/l]	Observations
1	35	125.00	5,411.3	Lower Marker
2	47	86.34	2,787.5	
3	266	40.65	231.7	
4	376	1,643.62	6,618.6	
5	392	398.97	1,541.9	
6	401	467.68	1,766.5	
7	420	348.34	1,256.5	
8	427	856.20	3,034.9	
9	459	1,037.51	3,427.1	
10	505	1,153.19	3,461.8	
11	655	45.90	106.1	
12	716	29.82	63.1	
13	1,106	143.85	197.1	
14	1,347	22.19	25.0	
15	1,752	18.44	15.9	
16	10,380	75.00	10.9	Upper Marker

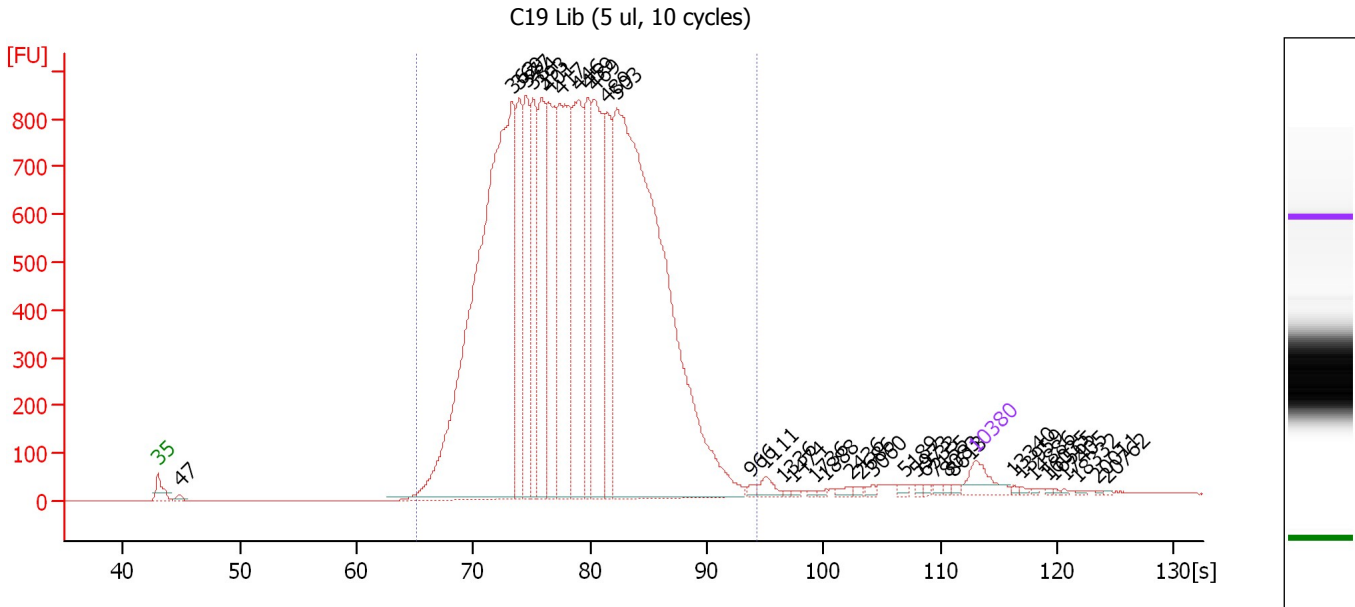
Region table for sample 6 : C20 Lib (5 ul, 10 cycles)

From [s]	Molarity [pmol/l]	Average Size [bp]	Conc. [pg/μl]	To [s]	Corr. Area	% of Total	Size distribution in CV [%]	Color
66.25	22,919.8	439	6,367.79	91.57	3,325.7	94	18.5	Blue

Assay Class: High Sensitivity DNA Assay
 Data Path: C:\...ents and Settings\Bioanalyzer\2012-03-06\2012-03-06_004.xad

Created: 3/6/2012 12:24:51 PM
 Modified: 3/6/2012 1:06:11 PM

Electropherogram Summary Continued ...



Overall Results for sample 7 : C19 Lib (5 ul, 10 cycles)

Number of peaks found: 37 Corr. Area 1: 18,441.5
 Noise: 0.3

Peak table for sample 7 : C19 Lib (5 ul, 10 cycles)

Peak	Size [bp]	Conc. [pg/μl]	Molarity [pmol/l]	Observations
1	35	125.00	5,411.3	Lower Marker
2	47	22.10	709.5	
3	362	3,331.69	13,961.2	
4	369	519.65	2,135.2	
5	377	513.50	2,066.5	
6	384	501.80	1,981.7	
7	393	605.78	2,334.2	
8	401	629.89	2,382.7	
9	417	1,021.15	3,707.2	
10	446	788.22	2,678.2	
11	459	463.33	1,528.2	
12	469	838.26	2,710.3	
13	489	437.59	1,356.5	
14	503	3,691.86	11,127.8	
15	966	14.32	22.5	
16	1,111	37.25	50.8	
17	1,336	4.97	5.6	
18	1,474	4.99	5.1	
19	1,736	6.26	5.5	
20	1,888	6.65	5.3	
21	2,436	15.02	9.3	
22	2,686	9.08	5.1	
23	3,060	10.61	5.3	
24	5,189	12.95	3.8	
25	5,973	7.68	1.9	
26	6,533	9.20	2.1	

Assay Class: High Sensitivity DNA Assay
 Data Path: C:\...ents and Settings\Bioanalyzer\2012-03-06\2012-03-06_004.xad


Created: 3/6/2012 12:24:51 PM
 Modified: 3/6/2012 1:06:11 PM

Electropherogram Summary Continued ...

... Peak table for sample 7 : C19 Lib (5 ul, 10 cycles)

Peak	Size [bp]	Conc. [pg/µl]	Molarity [pmol/l]	Observations
27	7,155	9.95	2.1	
28	8,083	6.87	1.3	
29	8,613	7.89	1.4	
30	10,380	75.00	10.9	Upper Marker
31	13,340	0.00	0.0	
32	13,959	0.00	0.0	
33	14,886	0.00	0.0	
34	16,035	0.00	0.0	
35	16,565	0.00	0.0	
36	17,405	0.00	0.0	
37	18,332	0.00	0.0	
38	20,011	0.00	0.0	
39	20,762	0.00	0.0	

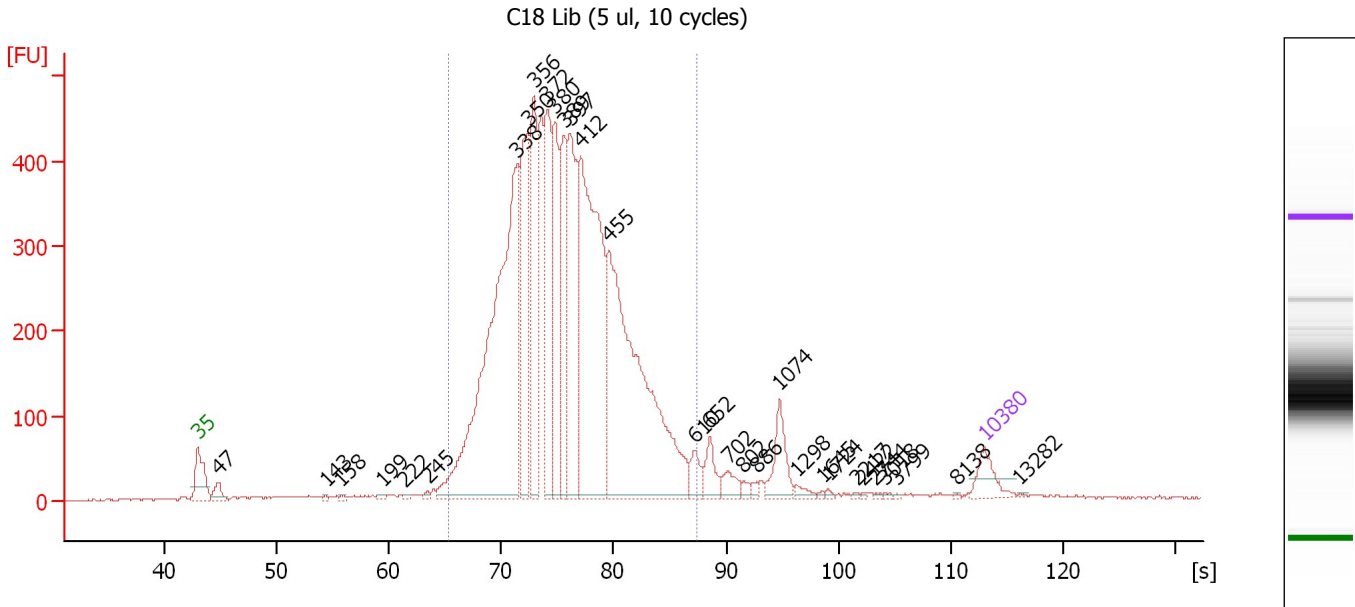
Region table for sample 7 : C19 Lib (5 ul, 10 cycles)

From [s]	Molarity [pmol/l]	Average Size [bp]	Conc. [pg/µl]	To [s]	Corr. Area % of Total	Size distribution in CV [%]	Color	
65.05	47,478.1	449	13,202.72	94.30	18,441.5	98	22.2	

Assay Class: High Sensitivity DNA Assay
 Data Path: C:\...ents and Settings\Bioanalyzer\2012-03-06\2012-03-06_004.xad

Created: 3/6/2012 12:24:51 PM
 Modified: 3/6/2012 1:06:11 PM

Electropherogram Summary Continued ...



Overall Results for sample 8 : C18 Lib (5 ul, 10 cycles)

Number of peaks found: 31 Corr. Area 1: 7,147.7
 Noise: 1.1

Peak table for sample 8 : C18 Lib (5 ul, 10 cycles)

Peak	Size [bp]	Conc. [pg/μl]	Molarity [pmol/l]	Observations
1	35	125.00	5,411.3	Lower Marker
2	47	67.37	2,165.7	
3	143	8.66	92.0	
4	158	9.91	95.3	
5	199	11.65	88.5	
6	222	7.91	54.0	
7	245	12.52	77.3	
8	338	2,015.47	9,040.5	
9	350	621.51	2,693.1	
10	356	548.42	2,332.8	
11	372	526.50	2,146.4	
12	380	461.10	1,838.6	
13	389	412.69	1,605.4	
14	397	612.87	2,341.3	
15	412	1,341.99	4,935.6	
16	455	1,570.14	5,223.4	
17	610	69.10	171.7	
18	652	86.05	200.1	
19	702	61.71	133.3	
20	802	18.10	34.2	
21	886	14.92	25.5	
22	1,074	134.22	189.4	
23	1,298	21.75	25.4	
24	1,645	4.12	3.8	
25	1,724	6.51	5.7	
26	2,217	3.56	2.4	

Assay Class: High Sensitivity DNA Assay
 Data Path: C:\...ents and Settings\Bioanalyzer\2012-03-06\2012-03-06_004.xad


Created: 3/6/2012 12:24:51 PM
 Modified: 3/6/2012 1:06:11 PM

Electropherogram Summary Continued ...

... Peak table for sample 8 : C18 Lib (5 ul, 10 cycles)

Peak	Size [bp]	Conc. [pg/μl]	Molarity [pmol/l]	Observations
27	2,422	3.12	2.0	
28	2,744	3.10	1.7	
29	3,018	4.34	2.2	
30	3,799	2.46	1.0	
31	8,138	1.80	0.3	
32	10,380	75.00	10.9	Upper Marker
33	13,282	0.00	0.0	

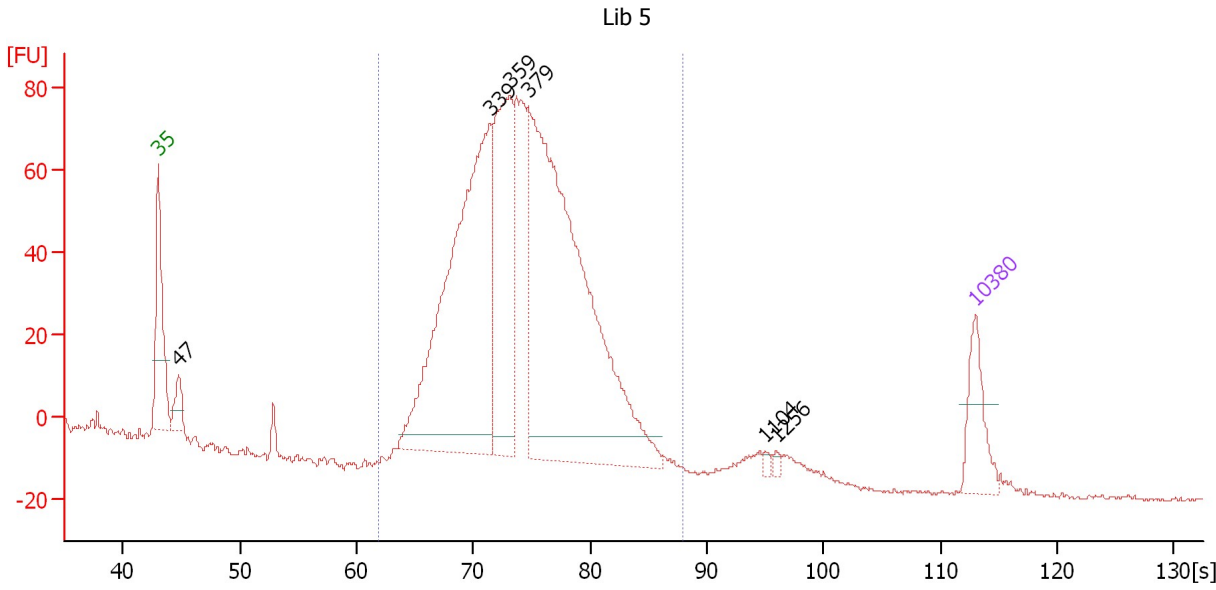
Region table for sample 8 : C18 Lib (5 ul, 10 cycles)

From [s]	Molarity [pmol/l]	Average Size [bp]	Conc. [pg/μl]	To [s]	Corr. Area % of Total	Size distribution in CV [%]	Color	
65.33	34,183.5	397	8,623.47	87.40	7,147.7	91	17.3	

Assay Class: High Sensitivity DNA Assay
 Data Path: C:\...ents and Settings\Bioanalyzer\2012-03-06\2012-03-06_004.xad

Created: 3/6/2012 12:24:51 PM
 Modified: 3/6/2012 1:06:11 PM

Electropherogram Summary Continued ...



Overall Results for sample 9 : Lib 5

Number of peaks found: 6 Corr. Area 1: 1,392.6
 Noise: 0.3

Peak table for sample 9 : Lib 5

Peak	Size [bp]	Conc. [pg/μl]	Molarity [pmol/l]	Observations
1	35	125.00	5,411.3	Lower Marker
2	47	55.09	1,794.3	
3	339	912.49	4,084.3	
4	359	403.68	1,702.1	
5	379	1,146.51	4,583.4	
6	1,104	5.64	7.7	
7	1,256	6.24	7.5	
8	10,380	75.00	10.9	Upper Marker

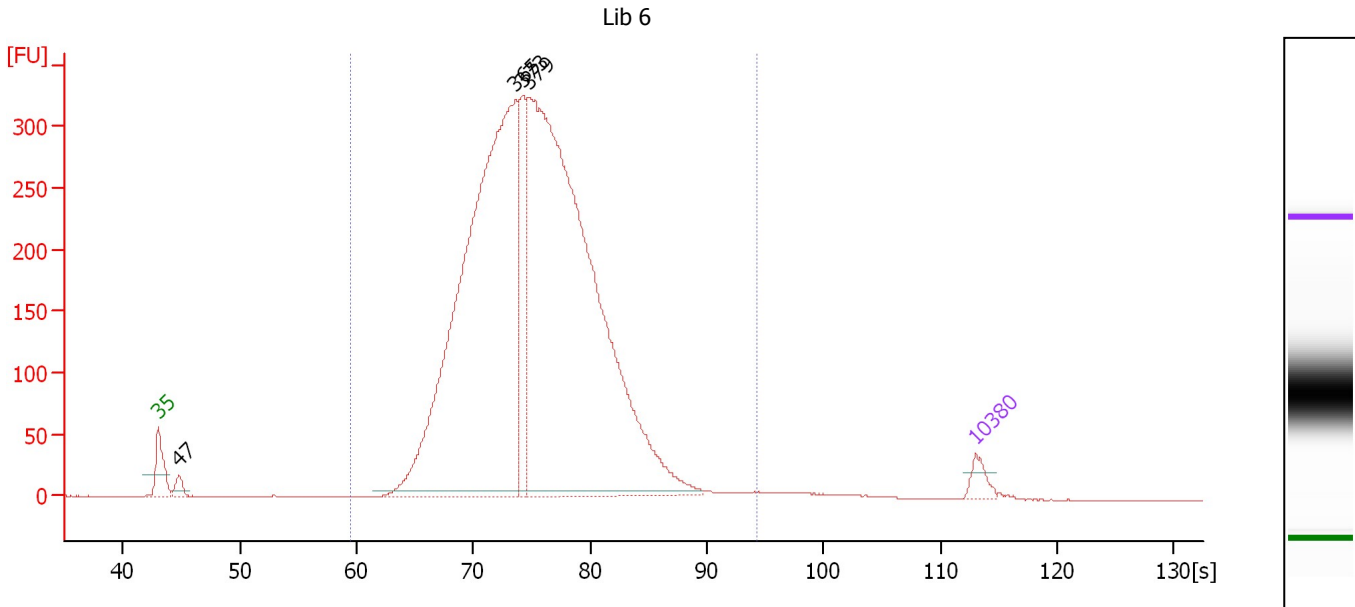
Region table for sample 9 : Lib 5

From [s]	Molarity [pmol/l]	Average Size [bp]	Conc. [pg/μl]	To [s]	Corr. Area	% of Total	Size distribution in CV [%]	Color
61.94	11,065.6	376	2,647.49	87.92	1,392.6	96	16.7	Blue

Assay Class: High Sensitivity DNA Assay
 Data Path: C:\...ents and Settings\Bioanalyzer\2012-03-06\2012-03-06_004.xad

Created: 3/6/2012 12:24:51 PM
 Modified: 3/6/2012 1:06:11 PM

Electropherogram Summary Continued ...



Overall Results for sample 10 : Lib 6

Number of peaks found: 4 Corr. Area 1: 5,499.4
 Noise: 0.2

Peak table for sample 10 : Lib 6

Peak	Size [bp]	Conc. [pg/μl]	Molarity [pmol/l]	Observations
1	35	125.00	5,411.3	Lower Marker
2	47	89.35	2,881.4	
3	365	5,372.51	22,287.8	
4	373	676.80	2,748.7	
5	379	6,386.25	25,524.1	
6	10,380	75.00	10.9	Upper Marker

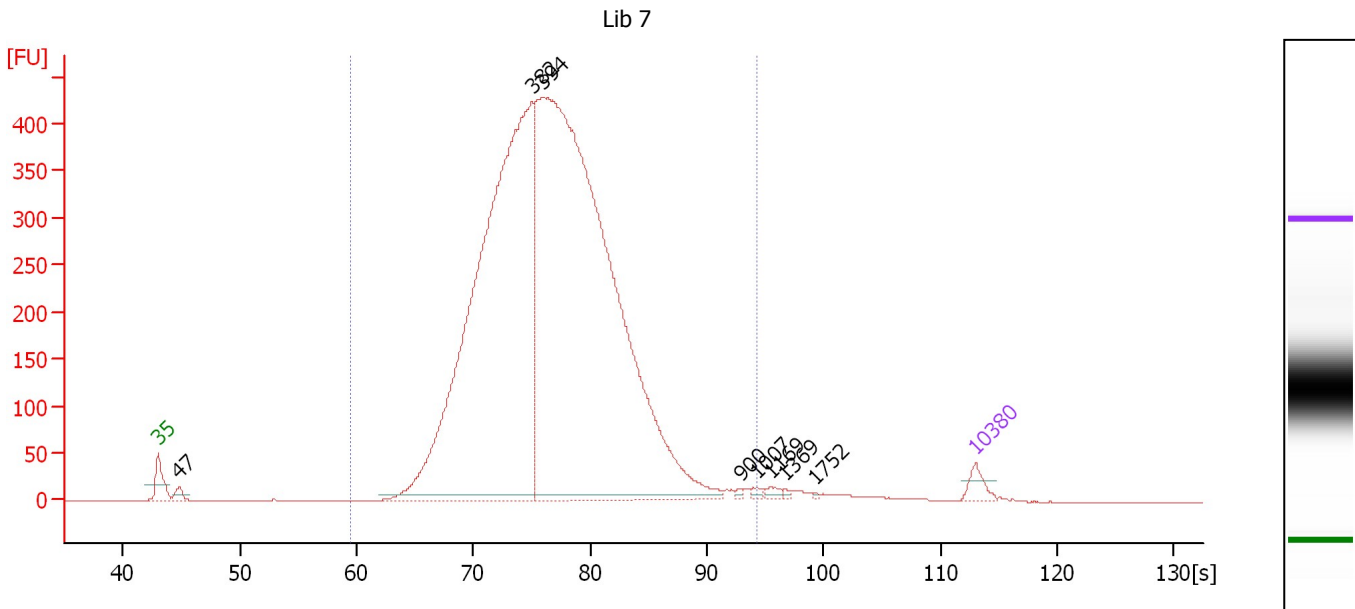
Region table for sample 10 : Lib 6

From [s]	Molarity [pmol/l]	Average Size [bp]	Conc. [pg/μl]	To [s]	Corr. Area	% of Total	Size distribution in CV [%]	Color
59.50	51,321.0	393	12,703.52	94.30	5,499.4	99	20.0	Blue

Assay Class: High Sensitivity DNA Assay
 Data Path: C:\...ents and Settings\Bioanalyzer\2012-03-06\2012-03-06_004.xad

Created: 3/6/2012 12:24:51 PM
 Modified: 3/6/2012 1:06:11 PM

Electropherogram Summary Continued ...



Overall Results for sample 11 : Lib 7

Number of peaks found: 8 Corr. Area 1: 7,348.2
 Noise: 0.2

Peak table for sample 11 : Lib 7

Peak	Size [bp]	Conc. [pg/μl]	Molarity [pmol/l]	Observations
1	35	125.00	5,411.3	Lower Marker
2	47	66.93	2,154.4	
3	382	6,582.36	26,076.8	
4	394	8,827.02	33,945.4	
5	900	14.05	23.6	
6	1,007	24.80	37.3	
7	1,169	33.28	43.1	
8	1,369	13.33	14.8	
9	1,752	6.00	5.2	
10	10,380	75.00	10.9	Upper Marker

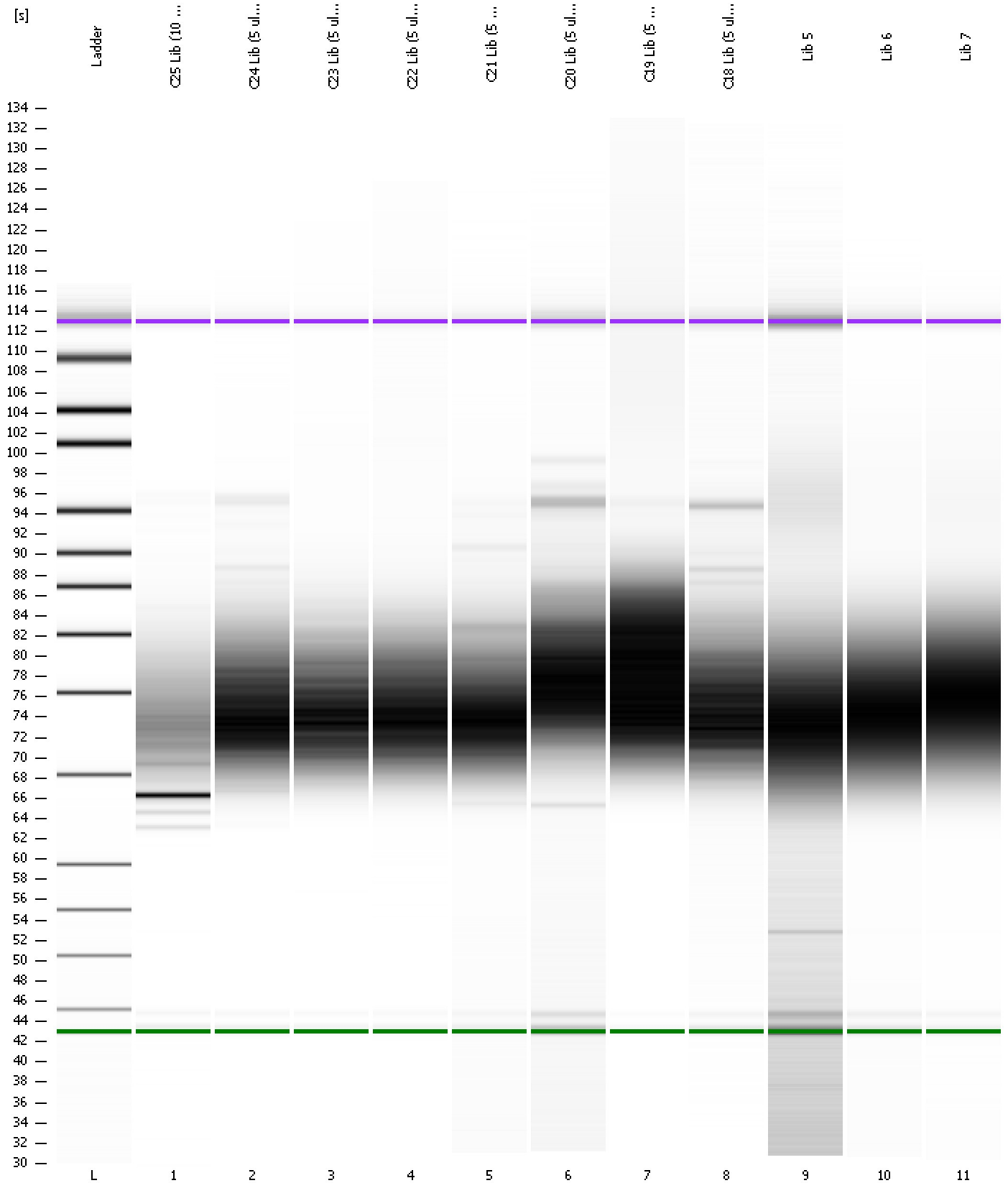
Region table for sample 11 : Lib 7

From [s]	Molarity [pmol/l]	Average Size [bp]	Conc. [pg/μl]	To [s]	Corr. Area	% of Total	Size distribution in CV [%]	Color
59.50	60,474.1	415	15,728.56	94.30	7,348.2	98	21.2	Blue

Assay Class: High Sensitivity DNA Assay
Data Path: C:\...ents and Settings\Bioanalyzer\2012-03-06\2012-03-06_004.xad

Created: 3/6/2012 12:24:51 PM
Modified: 3/6/2012 1:06:11 PM

Gel Image



Assay Class: High Sensitivity DNA Assay
 Data Path: C:\...ents and Settings\Bioanalyzer\2012-03-06\2012-03-06_004.xad

Created: 3/6/2012 12:24:51 PM
 Modified: 3/6/2012 1:06:11 PM

Run Logbook

Description	Number	Source	Category	Sub Category	Time	Time Zone	User	Host
Run ended on port 1 (Number of wells acquired: 12)		Instrument	Run		3/6/2012 1:06:08 PM	(GMT --08:00) Pacific Standard Time	UC Davis	D8XSMGH1
Run started on port 1 (File: C:\Documents and Settings\Bioanalyzer\2012-03-06\2012-03-06_004.xad)		Instrument	Run		3/6/2012 12:24:57 PM	(GMT --08:00) Pacific Standard Time	UC Davis	D8XSMGH1
Product Number : G2938B		Instrument	Run		3/6/2012 12:24:57 PM	(GMT --08:00) Pacific Standard Time	UC Davis	D8XSMGH1
Name :		Instrument	Run		3/6/2012 12:24:57 PM	(GMT --08:00) Pacific Standard Time	UC Davis	D8XSMGH1
Vendor : Agilent Technologies		Instrument	Run		3/6/2012 12:24:57 PM	(GMT --08:00) Pacific Standard Time	UC Davis	D8XSMGH1
Serial# : DE13701086		Instrument	Run		3/6/2012 12:24:57 PM	(GMT --08:00) Pacific Standard Time	UC Davis	D8XSMGH1
Firmware : C.01.069		Instrument	Run		3/6/2012 12:24:57 PM	(GMT --08:00) Pacific Standard Time	UC Davis	D8XSMGH1
Cartridge : Electrode		Instrument	Run		3/6/2012 12:24:57 PM	(GMT --08:00) Pacific Standard Time	UC Davis	D8XSMGH1