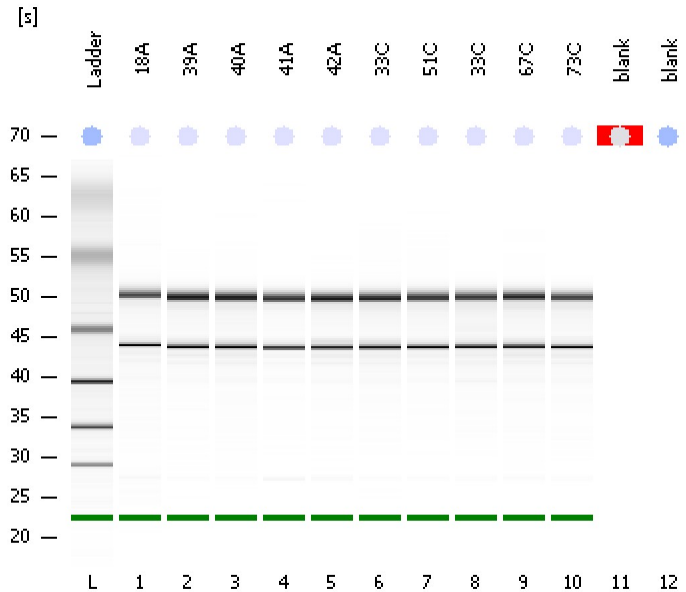


Assay Class: Eukaryote Total RNA Nano  
Data Path: C:\...ents and Settings\Bioanalyzer\2012-03-06\2012-03-06\_007.xad

Created: 3/6/2012 3:27:02 PM  
Modified: 3/6/2012 3:48:22 PM

Electrophoresis File Run Summary



Instrument Information:

Instrument Name: DE13701086      Firmware: C.01.069  
Serial#: DE13701086      Type: G2938B

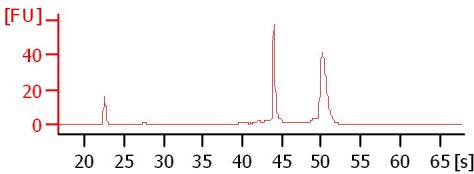
Assay Information:

Assay Origin Path: C:\Program Files\Agilent\2100 bioanalyzer\2100 expert\assays\RNA\Eukaryote Total RNA Nano Series II.xsy  
Assay Class: Eukaryote Total RNA Nano  
Version: 2.6  
Assay Comments: Total RNA Analysis ng sensitivity (Eukaryote)  
© Copyright 2003 - 2009 Agilent Technologies, Inc.

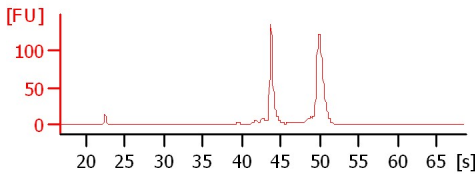
Chip Information:

Chip Lot #:  
Reagent Kit Lot #:  
Chip Comments:

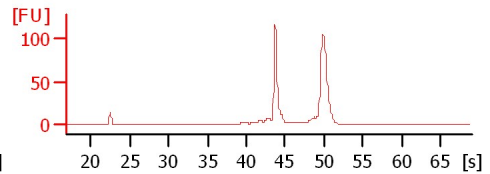
**18A**  
RIN: 9.50



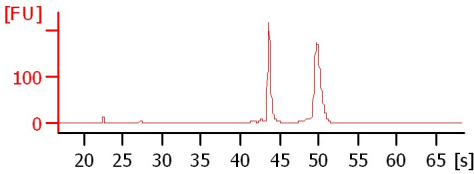
**39A**  
RIN: 9.50



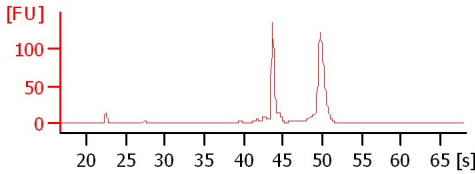
**40A**  
RIN: 9.40



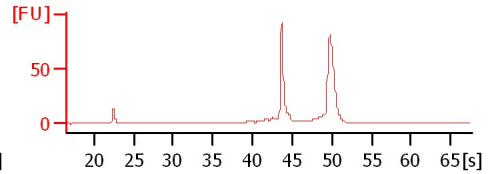
**41A**  
RIN: 9.70



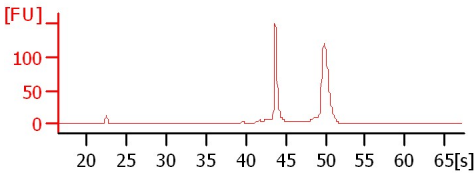
**42A**  
RIN: 9.50



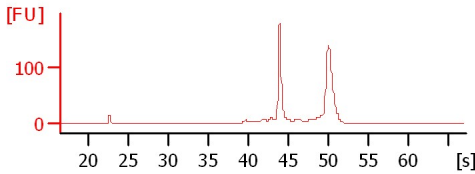
**33C**  
RIN: 9.50



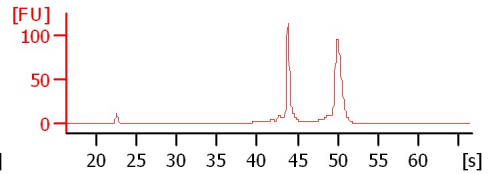
**51C**  
RIN: 9.60



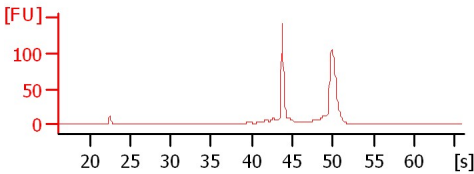
**33C**  
RIN: 9.30



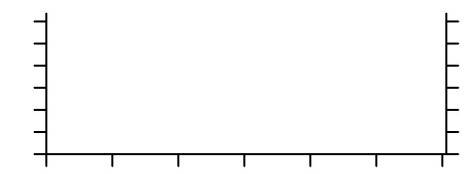
**67C**  
RIN: 9.60



**73C**  
RIN: 9.10



**blank**  
RIN N/A



Assay Class: Eukaryote Total RNA Nano  
 Data Path: C:\...ents and Settings\Bioanalyzer\2012-03-06\2012-03-06\_007.xad

Created: 3/6/2012 3:27:02 PM  
 Modified: 3/6/2012 3:48:22 PM

**Electrophoresis File Run Summary (Chip Summary)**

Sample Name	Sample Comment	Status	Result Label	Result Color
18A		✓	RIN: 9.50	
39A		✓	RIN: 9.50	
40A		✓	RIN: 9.40	
41A		✓	RIN: 9.70	
42A		✓	RIN: 9.50	
33C		✓	RIN: 9.50	
51C		✓	RIN: 9.60	
33C		✓	RIN: 9.30	
67C		✓	RIN: 9.60	
73C		✓	RIN: 9.10	
blank		✗	RIN N/A	
blank		✗		
Ladder		✓	All Other Samples	

**Chip Lot #**

**Reagent Kit Lot #**

**Chip Comments :**

Assay Class: Eukaryote Total RNA Nano  
Data Path: C:\...ents and Settings\Bioanalyzer\2012-03-06\2012-03-06\_007.xad

Created: 3/6/2012 3:27:02 PM  
Modified: 3/6/2012 3:48:22 PM

## Electrophoresis Assay Details

### General Analysis Settings

Number of Available Sample and Ladder Wells (Max.) : 13

Minimum Visible Range [s] : 17

Maximum Visible Range [s] : 70

Start Analysis Time Range [s] : 19

End Analysis Time Range [s] : 69

Ladder Concentration [ng/μl] : 150

Lower Marker Concentration [ng/μl] : 0

Upper Marker Concentration [ng/μl] : 0

Used Lower Marker for Quantitation

Standard Curve Fit is Logarithmic

Show Data Aligned to Lower Marker

### Integrator Settings

Integration Start Time [s] : 19

Integration End Time [s] : 69

Slope Threshold : 0.6

Height Threshold [FU] : 0.5

Area Threshold : 0.2

Width Threshold [s] : 0.5

Baseline Plateau [s] : 6

### Filter Settings

Filter Width [s] : 0.5

Polynomial Order : 4

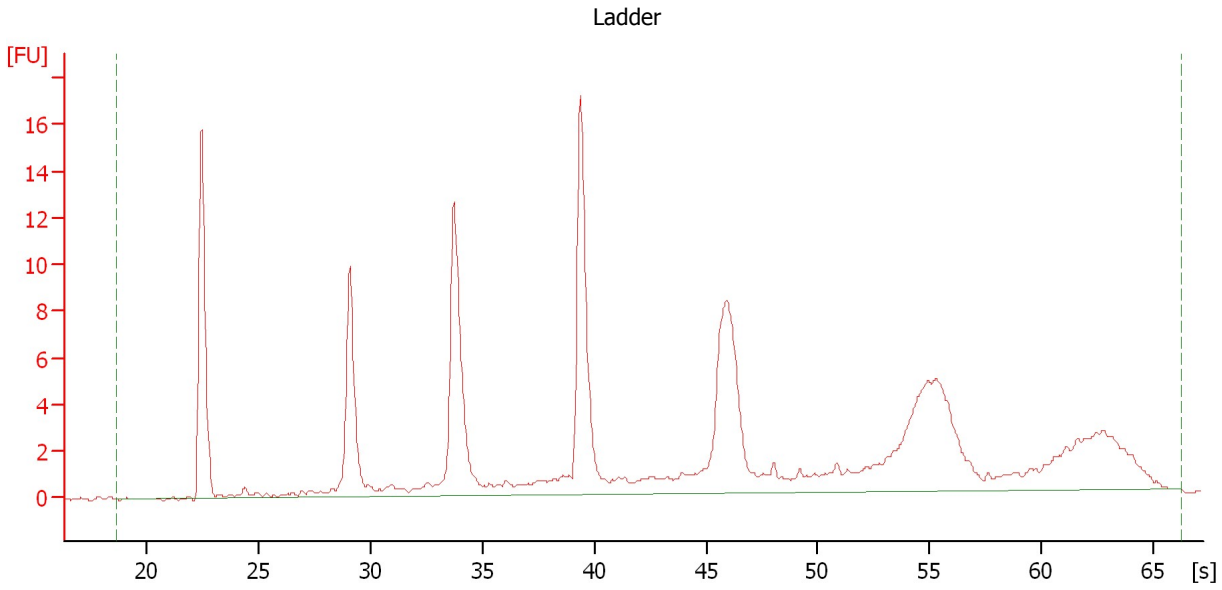
### Ladder

Ladder Peak	Size
1	25
2	200
3	500
4	1000
5	2000
6	4000


Assay Class: Eukaryote Total RNA Nano  
Data Path: C:\...ents and Settings\Bioanalyzer\2012-03-06\2012-03-06\_007.xad

Created: 3/6/2012 3:27:02 PM  
Modified: 3/6/2012 3:48:22 PM

**Electropherogram Summary**



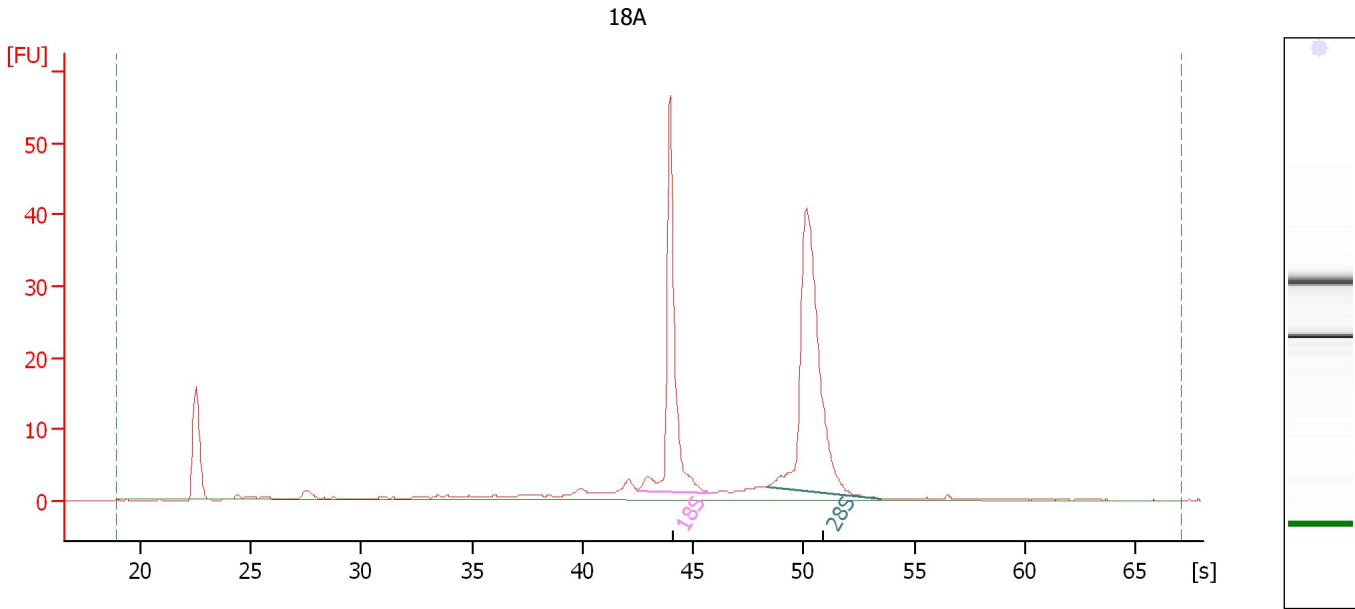
**Overall Results for Ladder**

RNA Area:	142.8	Result Flagging Color:	
RNA Concentration:	150 ng/μl	Result Flagging Label:	All Other Samples

Assay Class: Eukaryote Total RNA Nano  
Data Path: C:\...ents and Settings\Bioanalyzer\2012-03-06\2012-03-06\_007.xad

Created: 3/6/2012 3:27:02 PM  
Modified: 3/6/2012 3:48:22 PM

**Electropherogram Summary Continued ...**



**Overall Results for sample 1 : 18A**

RNA Area: 190.3                      RNA Integrity Number (RIN): 9.5 (B.02.08)  
RNA Concentration: 200 ng/μl                      Result Flagging Color:   
rRNA Ratio [28s / 18s]: 1.5                      Result Flagging Label: RIN: 9.50

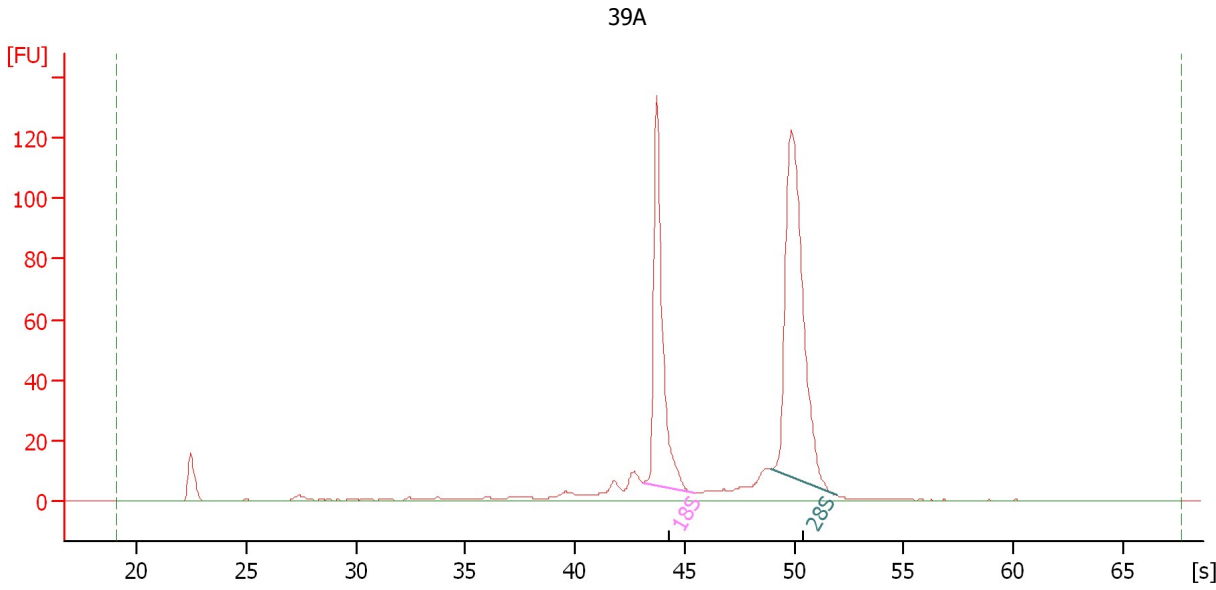
**Fragment table for sample 1 : 18A**

Name	Start Size [nt]	End Size [nt]	Area	% of total Area
18S	1,472	1,979	52.3	27.5
28S	2,521	3,623	76.2	40.1

Assay Class: Eukaryote Total RNA Nano  
Data Path: C:\...ents and Settings\Bioanalyzer\2012-03-06\2012-03-06\_007.xad

Created: 3/6/2012 3:27:02 PM  
Modified: 3/6/2012 3:48:22 PM

**Electropherogram Summary Continued ...**



**Overall Results for sample 2 : 39A**

RNA Area: 521.8                      RNA Integrity Number (RIN): 9.5 (B.02.08)  
RNA Concentration: 548 ng/μl              Result Flagging Color:   
rRNA Ratio [28s / 18s]: 1.6              Result Flagging Label: RIN: 9.50

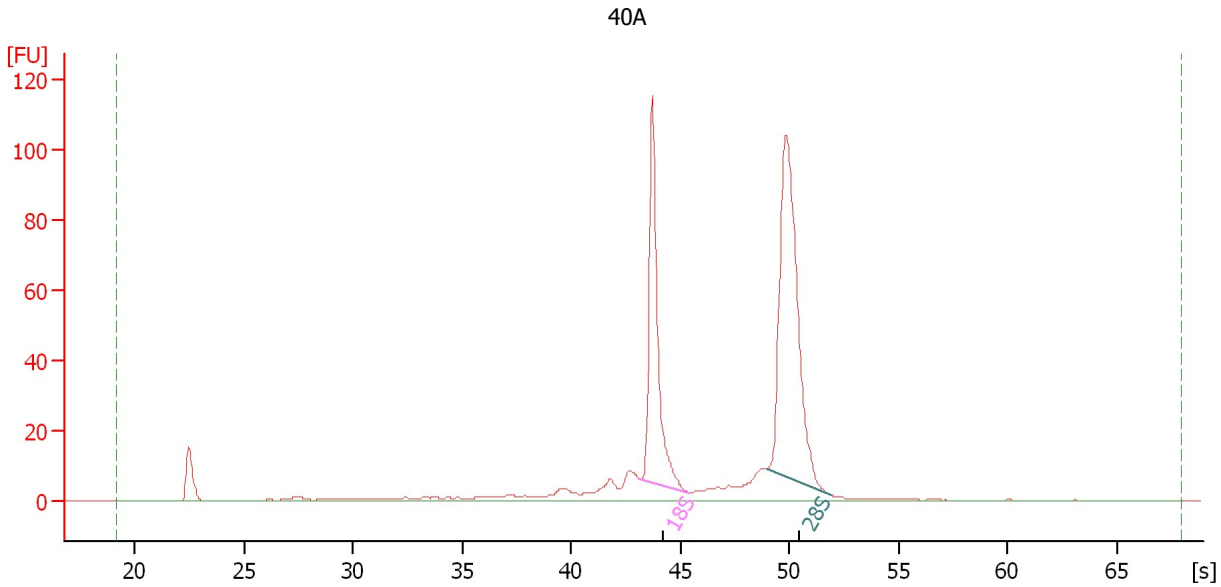
**Fragment table for sample 2 : 39A**

Name	Start Size [nt]	End Size [nt]	Area	% of total Area
18S	1,574	1,927	136.1	26.1
28S	2,653	3,293	214.3	41.1

Assay Class: Eukaryote Total RNA Nano  
 Data Path: C:\...ents and Settings\Bioanalyzer\2012-03-06\2012-03-06\_007.xad

Created: 3/6/2012 3:27:02 PM  
 Modified: 3/6/2012 3:48:22 PM

**Electropherogram Summary Continued ...**



**Overall Results for sample 3 : 40A**

RNA Area:	451.3	RNA Integrity Number (RIN):	9.4 (B.02.08)
RNA Concentration:	474 ng/μl	Result Flagging Color:	<span style="background-color: #ccccff; border: 1px solid black; display: inline-block; width: 20px; height: 10px;"></span>
rRNA Ratio [28s / 18s]:	1.6	Result Flagging Label:	RIN: 9.40

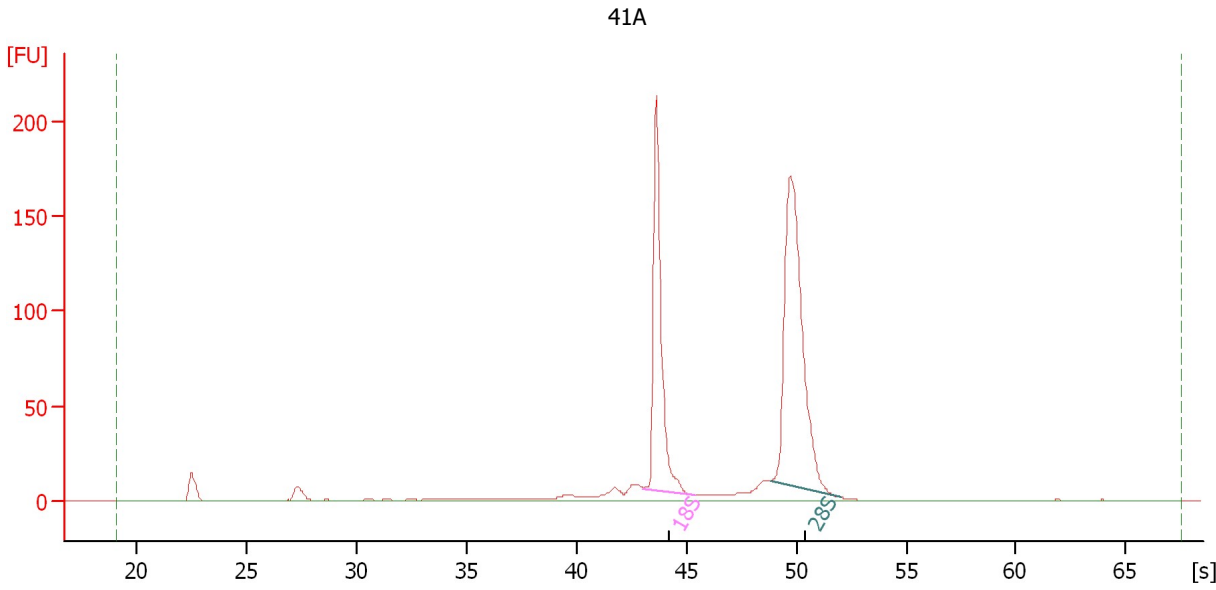
**Fragment table for sample 3 : 40A**

Name	Start Size [nt]	End Size [nt]	Area	% of total Area
18S	1,573	1,920	114.9	25.5
28S	2,647	3,289	183.0	40.5

Assay Class: Eukaryote Total RNA Nano  
Data Path: C:\...ents and Settings\Bioanalyzer\2012-03-06\2012-03-06\_007.xad

Created: 3/6/2012 3:27:02 PM  
Modified: 3/6/2012 3:48:22 PM

**Electropherogram Summary Continued ...**



**Overall Results for sample 4 : 41A**

RNA Area: 705.9                      RNA Integrity Number (RIN): 9.7 (B.02.08)  
RNA Concentration: 742 ng/μl                      Result Flagging Color:   
rRNA Ratio [28s / 18s]: 1.6                      Result Flagging Label: RIN: 9.70

**Fragment table for sample 4 : 41A**

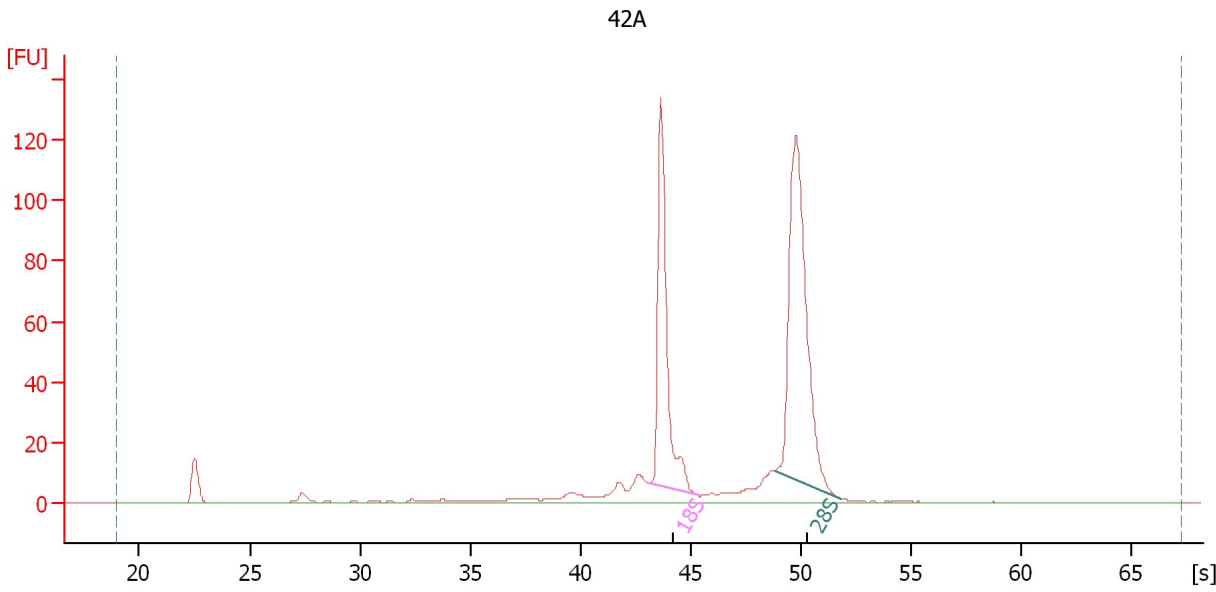
Name	Start Size [nt]	End Size [nt]	Area	% of total Area
18S	1,560	1,912	197.5	28.0
28S	2,620	3,310	307.5	43.6



Assay Class: Eukaryote Total RNA Nano  
 Data Path: C:\...ents and Settings\Bioanalyzer\2012-03-06\2012-03-06\_007.xad

Created: 3/6/2012 3:27:02 PM  
 Modified: 3/6/2012 3:48:22 PM

**Electropherogram Summary Continued ...**



**Overall Results for sample 5 : 42A**

RNA Area:	510.8	RNA Integrity Number (RIN):	9.5 (B.02.08)
RNA Concentration:	537 ng/μl	Result Flagging Color:	<span style="background-color: #ccccff; border: 1px solid black; display: inline-block; width: 20px; height: 10px;"></span>
rRNA Ratio [28s / 18s]:	1.5	Result Flagging Label:	RIN: 9.50

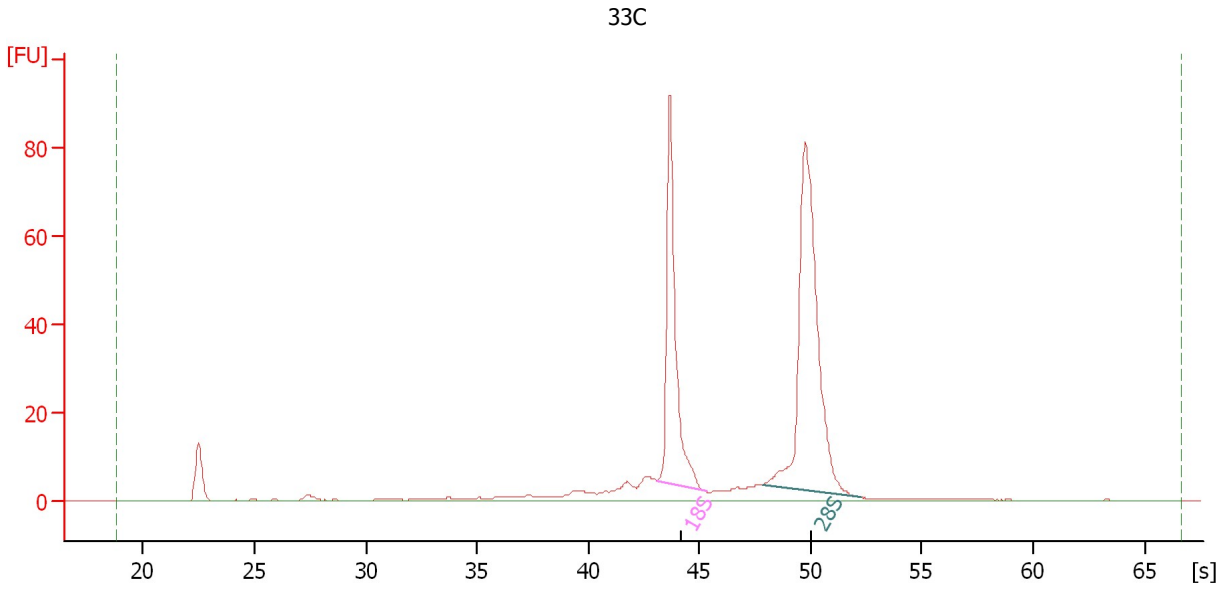
**Fragment table for sample 5 : 42A**

Name	Start Size [nt]	End Size [nt]	Area	% of total Area
18S	1,561	1,912	132.8	26.0
28S	2,617	3,252	204.2	40.0

Assay Class: Eukaryote Total RNA Nano  
Data Path: C:\...ents and Settings\Bioanalyzer\2012-03-06\2012-03-06\_007.xad

Created: 3/6/2012 3:27:02 PM  
Modified: 3/6/2012 3:48:22 PM

**Electropherogram Summary Continued ...**



**Overall Results for sample 6 : 33C**

RNA Area: 355.5                      RNA Integrity Number (RIN): 9.5 (B.02.08)  
RNA Concentration: 373 ng/μl                      Result Flagging Color:   
rRNA Ratio [28s / 18s]: 1.7                      Result Flagging Label: RIN: 9.50

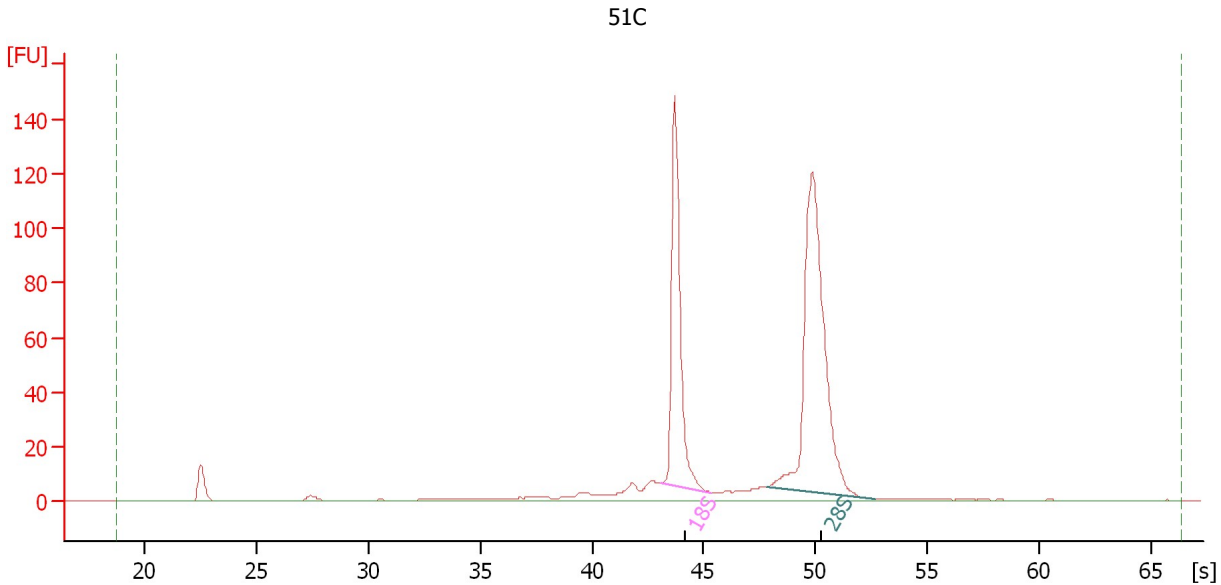
**Fragment table for sample 6 : 33C**

Name	Start Size [nt]	End Size [nt]	Area	% of total Area
18S	1,571	1,904	91.5	25.8
28S	2,414	3,363	151.3	42.6

Assay Class: Eukaryote Total RNA Nano  
 Data Path: C:\...ents and Settings\Bioanalyzer\2012-03-06\2012-03-06\_007.xad

Created: 3/6/2012 3:27:02 PM  
 Modified: 3/6/2012 3:48:22 PM

**Electropherogram Summary Continued ...**



**Overall Results for sample 7 : 51C**

RNA Area:	532.7	RNA Integrity Number (RIN):	9.6 (B.02.08)
RNA Concentration:	560 ng/μl	Result Flagging Color:	<span style="background-color: #ccccff; border: 1px solid black; display: inline-block; width: 20px; height: 10px;"></span>
rRNA Ratio [28s / 18s]:	1.7	Result Flagging Label:	RIN: 9.60

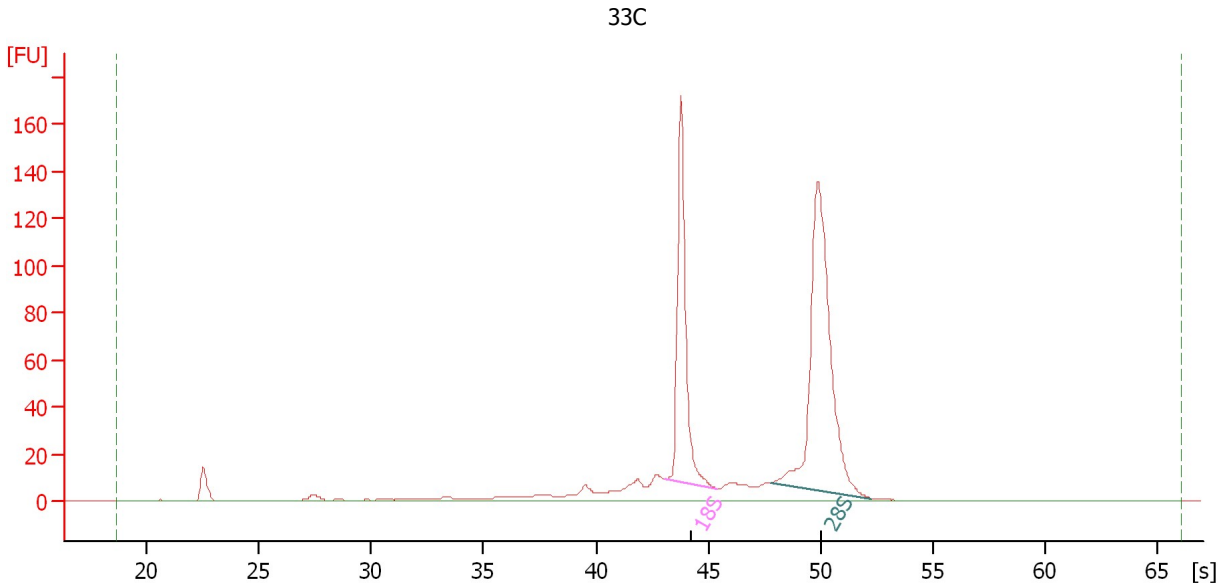
**Fragment table for sample 7 : 51C**

Name	Start Size [nt]	End Size [nt]	Area	% of total Area
18S	1,565	1,911	138.5	26.0
28S	2,401	3,449	238.9	44.8

Assay Class: Eukaryote Total RNA Nano  
Data Path: C:\...ents and Settings\Bioanalyzer\2012-03-06\2012-03-06\_007.xad

Created: 3/6/2012 3:27:02 PM  
Modified: 3/6/2012 3:48:22 PM

**Electropherogram Summary Continued ...**



**Overall Results for sample 8 : 33C**

RNA Area: 652.0                      RNA Integrity Number (RIN): 9.3 (B.02.08)  
RNA Concentration: 685 ng/μl                      Result Flagging Color:   
rRNA Ratio [28s / 18s]: 1.7                      Result Flagging Label: RIN: 9.30

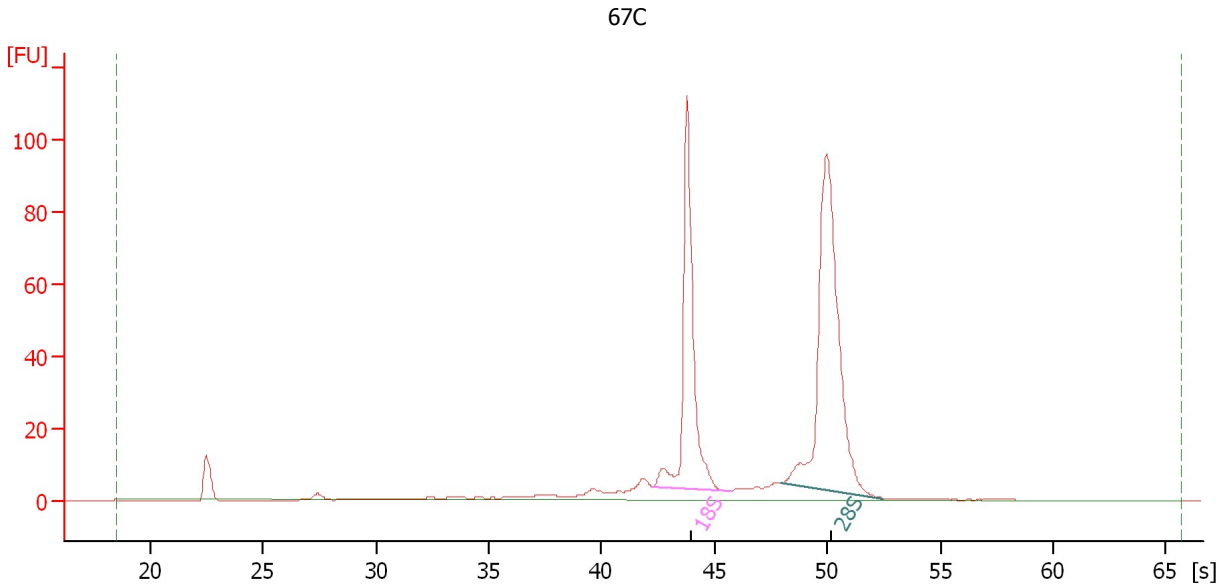
**Fragment table for sample 8 : 33C**

Name	Start Size [nt]	End Size [nt]	Area	% of total Area
18S	1,566	1,926	155.4	23.8
28S	2,408	3,350	263.5	40.4

Assay Class: Eukaryote Total RNA Nano  
 Data Path: C:\...ents and Settings\Bioanalyzer\2012-03-06\2012-03-06\_007.xad

Created: 3/6/2012 3:27:02 PM  
 Modified: 3/6/2012 3:48:22 PM

**Electropherogram Summary Continued ...**



**Overall Results for sample 9 : 67C**

RNA Area:	424.8	RNA Integrity Number (RIN):	9.6 (B.02.08)
RNA Concentration:	446 ng/μl	Result Flagging Color:	<span style="background-color: #ccccff; border: 1px solid black; display: inline-block; width: 20px; height: 10px;"></span>
rRNA Ratio [28s / 18s]:	1.5	Result Flagging Label:	RIN: 9.60

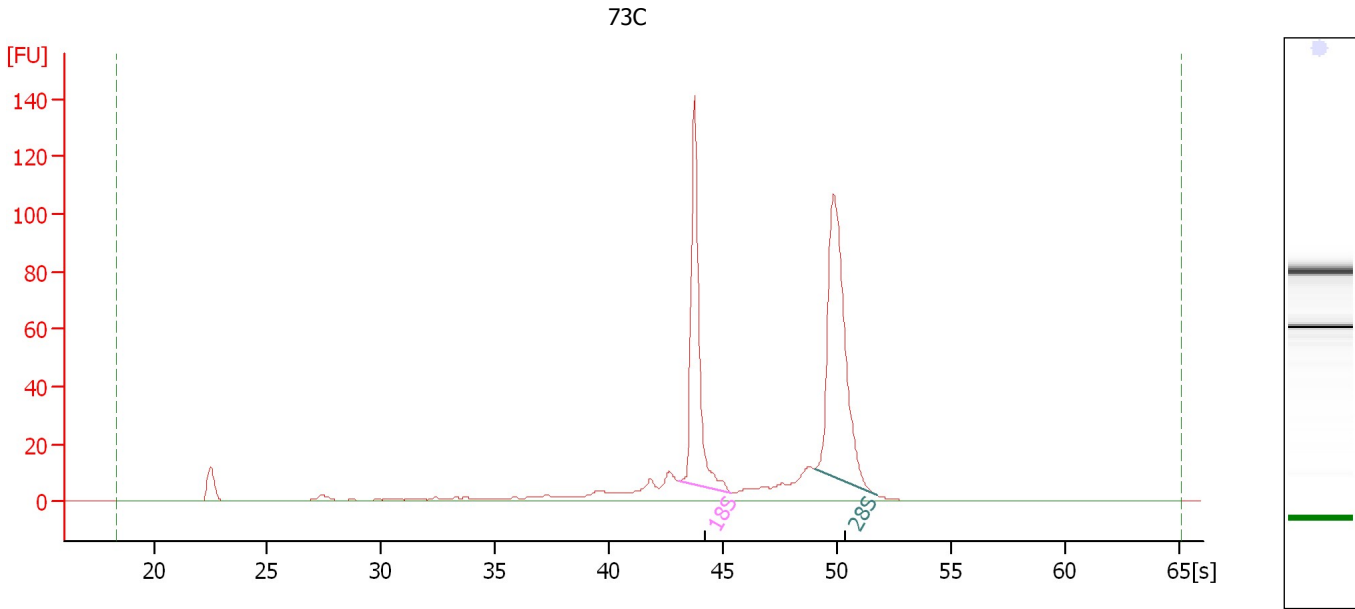
**Fragment table for sample 9 : 67C**

Name	Start Size [nt]	End Size [nt]	Area	% of total Area
18S	1,437	1,969	123.2	29.0
28S	2,425	3,401	187.7	44.2

Assay Class: Eukaryote Total RNA Nano  
Data Path: C:\...ents and Settings\Bioanalyzer\2012-03-06\2012-03-06\_007.xad

Created: 3/6/2012 3:27:02 PM  
Modified: 3/6/2012 3:48:22 PM

**Electropherogram Summary Continued ...**



**Overall Results for sample 10 : 73C**

RNA Area: 491.2                      RNA Integrity Number (RIN): 9.1 (B.02.08)  
RNA Concentration: 516 ng/μl              Result Flagging Color:   
rRNA Ratio [28s / 18s]: 1.4              Result Flagging Label: RIN: 9.10

**Fragment table for sample 10 : 73C**

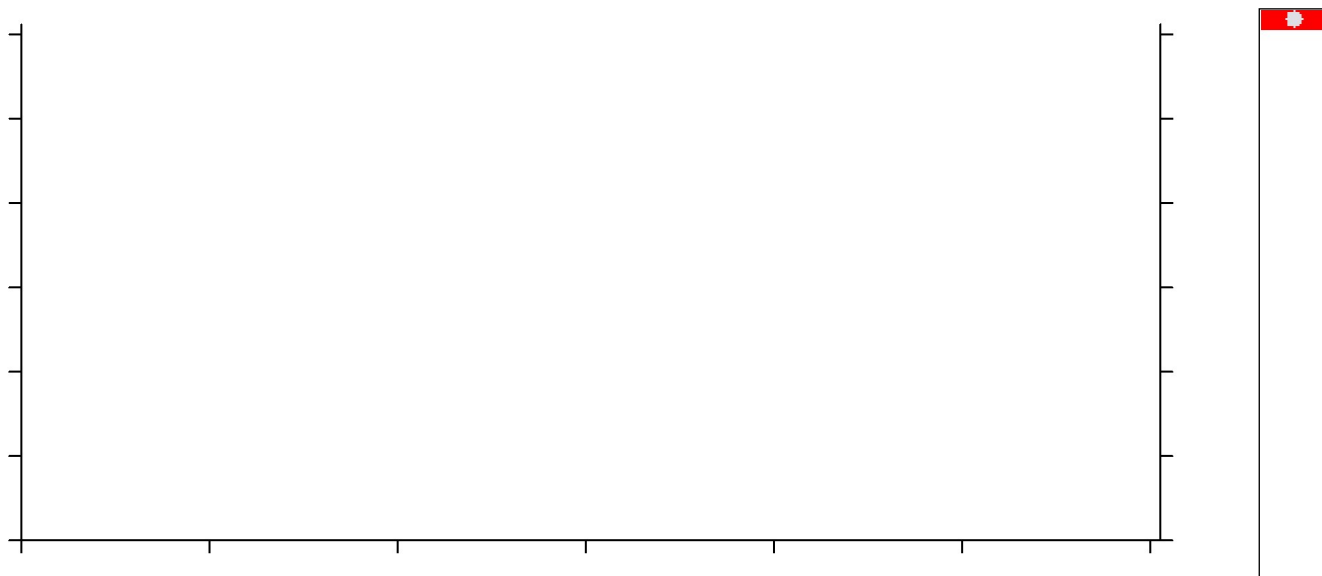
Name	Start Size [nt]	End Size [nt]	Area	% of total Area
18S	1,563	1,918	121.9	24.8
28S	2,662	3,257	169.0	34.4

Assay Class: Eukaryote Total RNA Nano  
Data Path: C:\...ents and Settings\Bioanalyzer\2012-03-06\2012-03-06\_007.xad

Created: 3/6/2012 3:27:02 PM  
Modified: 3/6/2012 3:48:22 PM

**Electropherogram Summary Continued ...**

blank




**Setpoint Deviations for sample 11 : blank**

End Analysis Time Range [s] : 1.7

**Overall Results for sample 11 : blank**

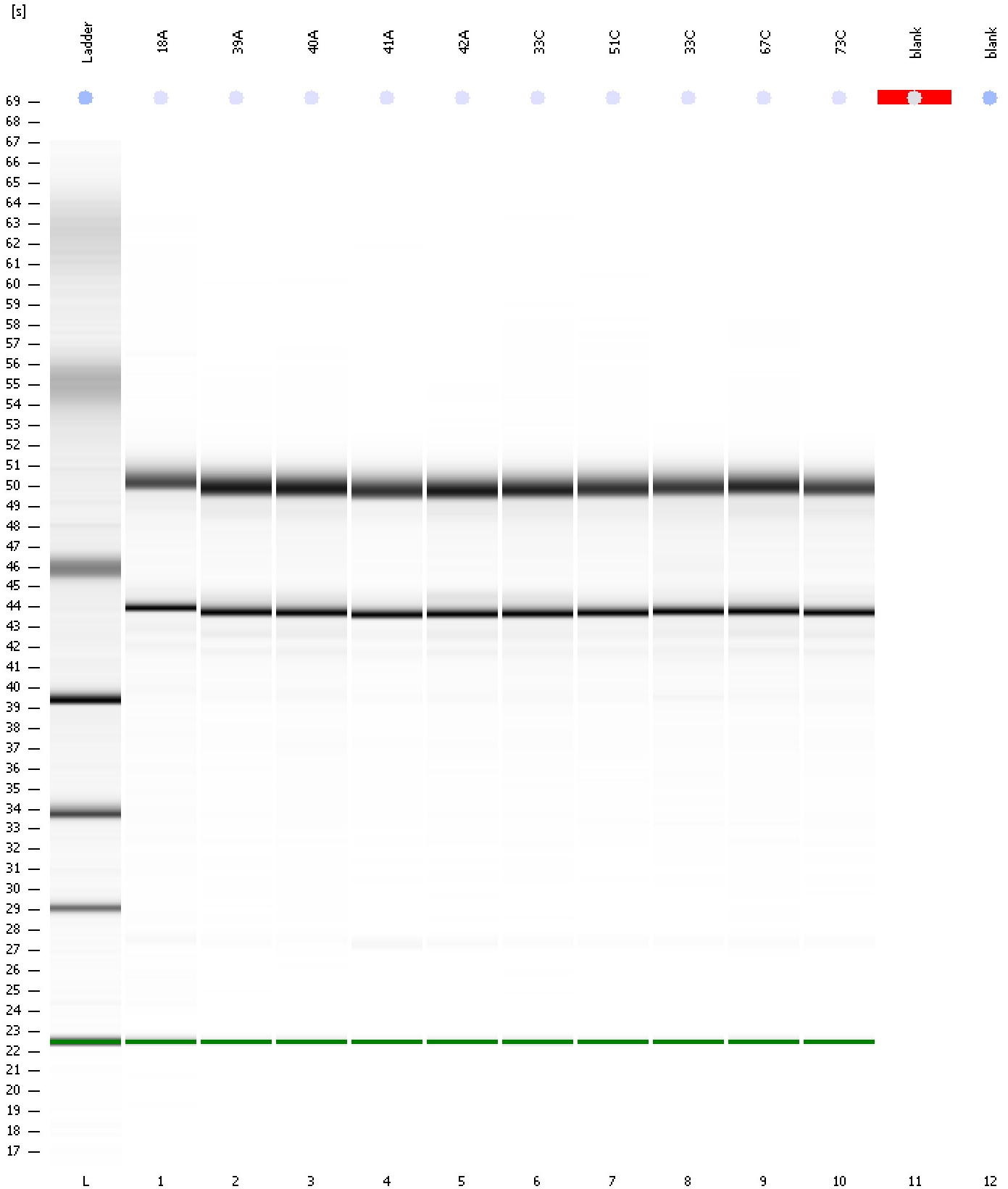
RNA Concentration: 0 ng/μl  
rRNA Ratio [28s / 18s]: 0.0

Result Flagging Color:   
Result Flagging Label: RIN N/A

Assay Class: Eukaryote Total RNA Nano  
Data Path: C:\...ents and Settings\Bioanalyzer\2012-03-06\2012-03-06\_007.xad

Created: 3/6/2012 3:27:02 PM  
Modified: 3/6/2012 3:48:22 PM

**Gel Image**





Assay Class: Eukaryote Total RNA Nano  
Data Path: C:\...ents and Settings\Bioanalyzer\2012-03-06\2012-03-06\_007.xad

Created: 3/6/2012 3:27:02 PM  
Modified: 3/6/2012 3:48:22 PM

**Invalid Samples**

Sample 12 has not been run, no results available.

Assay Class: Eukaryote Total RNA Nano  
 Data Path: C:\...ents and Settings\Bioanalyzer\2012-03-06\2012-03-06\_007.xad

Created: 3/6/2012 3:27:02 PM  
 Modified: 3/6/2012 3:48:22 PM

**Run Logbook**

Description	Number	Source	Category	Sub Category	Time	Time Zone	User	Host
Run aborted on port 1		Instrument	Run		3/6/2012 3:48:20 PM	(GMT --08:00) Pacific Standard Time	UC Davis	D8XSMGH1
Run started on port 1 (File: C:\Documents and Settings\Bioanalyzer\2012-03-06\2012-03-06_007.xad)		Instrument	Run		3/6/2012 3:27:07 PM	(GMT --08:00) Pacific Standard Time	UC Davis	D8XSMGH1
Product Number : G2938B		Instrument	Run		3/6/2012 3:27:07 PM	(GMT --08:00) Pacific Standard Time	UC Davis	D8XSMGH1
Name :		Instrument	Run		3/6/2012 3:27:07 PM	(GMT --08:00) Pacific Standard Time	UC Davis	D8XSMGH1
Vendor : Agilent Technologies		Instrument	Run		3/6/2012 3:27:07 PM	(GMT --08:00) Pacific Standard Time	UC Davis	D8XSMGH1
Serial# : DE13701086		Instrument	Run		3/6/2012 3:27:07 PM	(GMT --08:00) Pacific Standard Time	UC Davis	D8XSMGH1
Firmware : C.01.069		Instrument	Run		3/6/2012 3:27:07 PM	(GMT --08:00) Pacific Standard Time	UC Davis	D8XSMGH1
Cartridge : Electrode		Instrument	Run		3/6/2012 3:27:07 PM	(GMT --08:00) Pacific Standard Time	UC Davis	D8XSMGH1