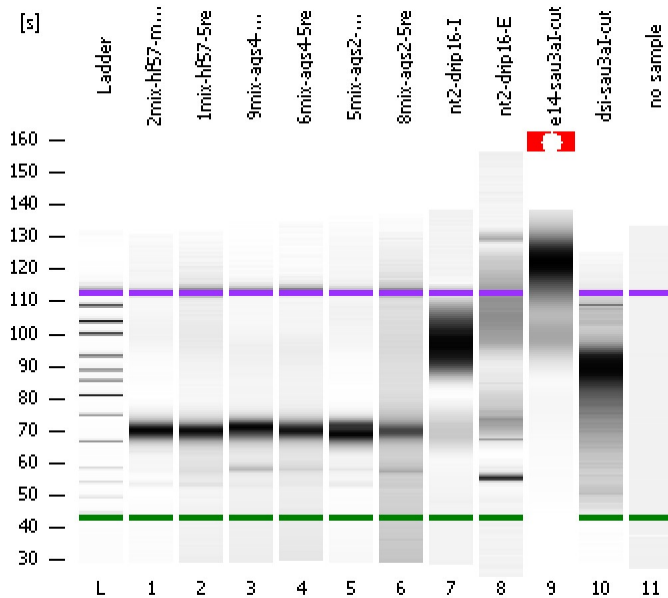


Assay Class: High Sensitivity DNA Assay  
Data Path: C:\...ents and Settings\Bioanalyzer\2012-03-07\2012-03-07\_001.xad

Created: 3/7/2012 11:12:20 AM  
Modified: 3/7/2012 12:03:06 PM

Electrophoresis File Run Summary



Instrument Information:

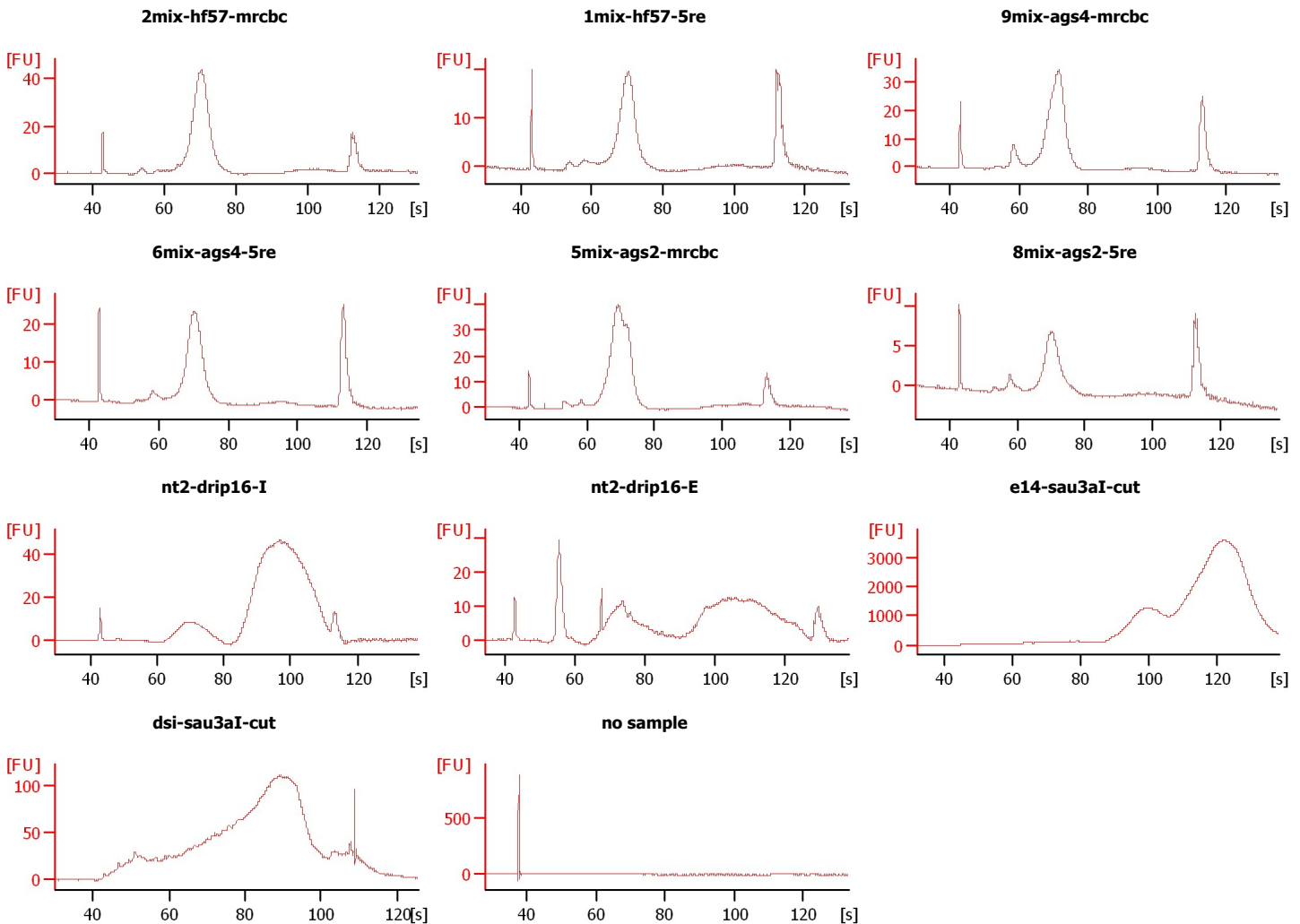
Instrument Name: DE13701086      Firmware: C.01.069  
Serial#: DE13701086      Type: G2938B

Assay Information:

Assay Origin Path: C:\Program Files\Agilent\2100 bioanalyzer\2100 expert\assays\dsDNA\High Sensitivity DNA.xsy  
Assay Class: High Sensitivity DNA Assay  
Version: 1.03  
Assay Comments: Copyright © 2003-2010 Agilent Technologies

Chip Information:

Chip Lot #:   
Reagent Kit Lot #:   
Chip Comments:



Assay Class: High Sensitivity DNA Assay  
Data Path: C:\...ents and Settings\Bioanalyzer\2012-03-07\2012-03-07\_001.xad

Created: 3/7/2012 11:12:20 AM  
Modified: 3/7/2012 12:03:06 PM

**Electrophoresis File Run Summary (Chip Summary)**

Sample Name	Sample Comment	Rest. Digest	Status	Observation	Result Label	Result Color
2mix-hf57-mrcbc		<input type="checkbox"/>	✓			
1mix-hf57-5re		<input type="checkbox"/>	✓			
9mix-ags4-mrcbc		<input type="checkbox"/>	✓			
6mix-ags4-5re		<input type="checkbox"/>	✓			
5mix-ags2-mrcbc		<input type="checkbox"/>	✓			
8mix-ags2-5re		<input type="checkbox"/>	✓			
nt2-drip16-I		<input type="checkbox"/>	✓			
nt2-drip16-E		<input type="checkbox"/>	✓			
e14-sau3aI-cut		<input type="checkbox"/>	✓			
dsi-sau3aI-cut		<input type="checkbox"/>	✓			
no sample		<input type="checkbox"/>	✓			
Ladder		<input type="checkbox"/>	✓			

**Chip Lot #**

**Reagent Kit Lot #**

**Chip Comments :**

Assay Class: High Sensitivity DNA Assay  
Data Path: C:\...ents and Settings\Bioanalyzer\2012-03-07\2012-03-07\_001.xad

Created: 3/7/2012 11:12:20 AM  
Modified: 3/7/2012 12:03:06 PM

**Electrophoresis Assay Details**

**General Analysis Settings**

Number of Available Sample and Ladder Wells (Max.) : 12  
Minimum Visible Range [s] : 32  
Maximum Visible Range [s] : 138  
Start Analysis Time Range [s] : 33  
End Analysis Time Range [s] : 137.5  
Ladder Concentration [pg/μl] : 1950  
Uses Standard Area for Ladder Fragments  
Lower Marker Concentration [pg/μl] : 125  
Upper Marker Concentration [pg/μl] : 75  
Used Upper Marker for Quantitation  
Standard Curve Fit is Point to Point  
Show Data Aligned to Lower and Upper Marker

**Integrator Settings**

Integration Start Time [s] : 33.05  
Integration End Time [s] : 137  
Slope Threshold : 0.8  
Height Threshold [FU] : 5  
Area Threshold : 0.1  
Width Threshold [s] : 0.6  
Baseline Plateau [s] : 0.5

**Filter Settings**

Filter Width [s] : 0.5  
Polynomial Order : 4

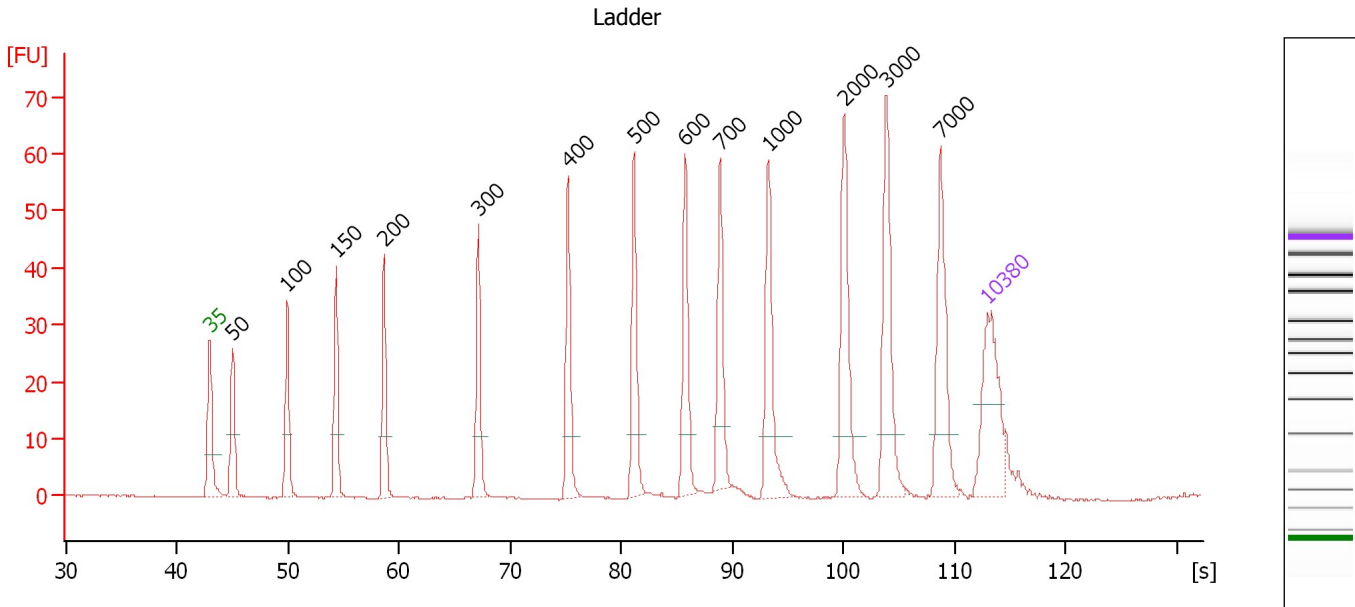
**Ladder**

Ladder Peak	Size	Area
1	35	160
2	50	210
3	100	208
4	150	221
5	200	242
6	300	270
7	400	305
8	500	306
9	600	336
10	700	321
11	1000	366
12	2000	413
13	3000	411
14	7000	400
15	10380	214

Assay Class: High Sensitivity DNA Assay  
 Data Path: C:\...ents and Settings\Bioanalyzer\2012-03-07\2012-03-07\_001.xad

Created: 3/7/2012 11:12:20 AM  
 Modified: 3/7/2012 12:03:06 PM

**Electropherogram Summary**



**Overall Results for Ladder**

Noise: 0.1

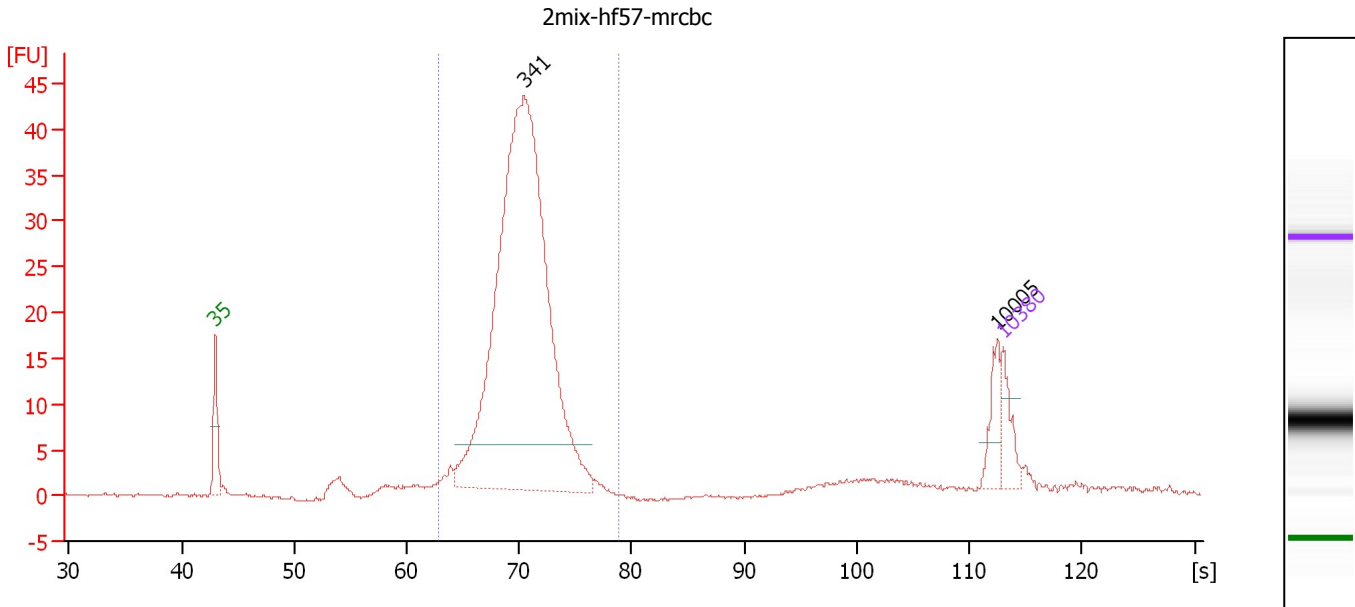
**Peak table for Ladder**

Peak	Size [bp]	Conc. [pg/μl]	Molarity [pmol/l]	Observations
1	35	125.00	5,411.3	Lower Marker
2	50	150.00	4,545.5	Ladder Peak
3	100	150.00	2,272.7	Ladder Peak
4	150	150.00	1,515.2	Ladder Peak
5	200	150.00	1,136.4	Ladder Peak
6	300	150.00	757.6	Ladder Peak
7	400	150.00	568.2	Ladder Peak
8	500	150.00	454.5	Ladder Peak
9	600	150.00	378.8	Ladder Peak
10	700	150.00	324.7	Ladder Peak
11	1,000	150.00	227.3	Ladder Peak
12	2,000	150.00	113.6	Ladder Peak
13	3,000	150.00	75.8	Ladder Peak
14	7,000	150.00	32.5	Ladder Peak
15	10,380	75.00	10.9	Upper Marker

Assay Class: High Sensitivity DNA Assay  
 Data Path: C:\...ents and Settings\Bioanalyzer\2012-03-07\2012-03-07\_001.xad

Created: 3/7/2012 11:12:20 AM  
 Modified: 3/7/2012 12:03:06 PM

**Electropherogram Summary Continued ...**



**Overall Results for sample 1 : 2mix-hf57-mrcbc**

Number of peaks found: 2                      Corr. Area 1: 327.1  
 Noise: 0.2

**Peak table for sample 1 : 2mix-hf57-mrcbc**

Peak	Size [bp]	Conc. [pg/μl]	Molarity [pmol/l]	Observations
1	35	125.00	5,411.3	Lower Marker
2	341	2,716.78	12,082.5	
3	10,005	81.13	12.3	
4	10,380	75.00	10.9	Upper Marker

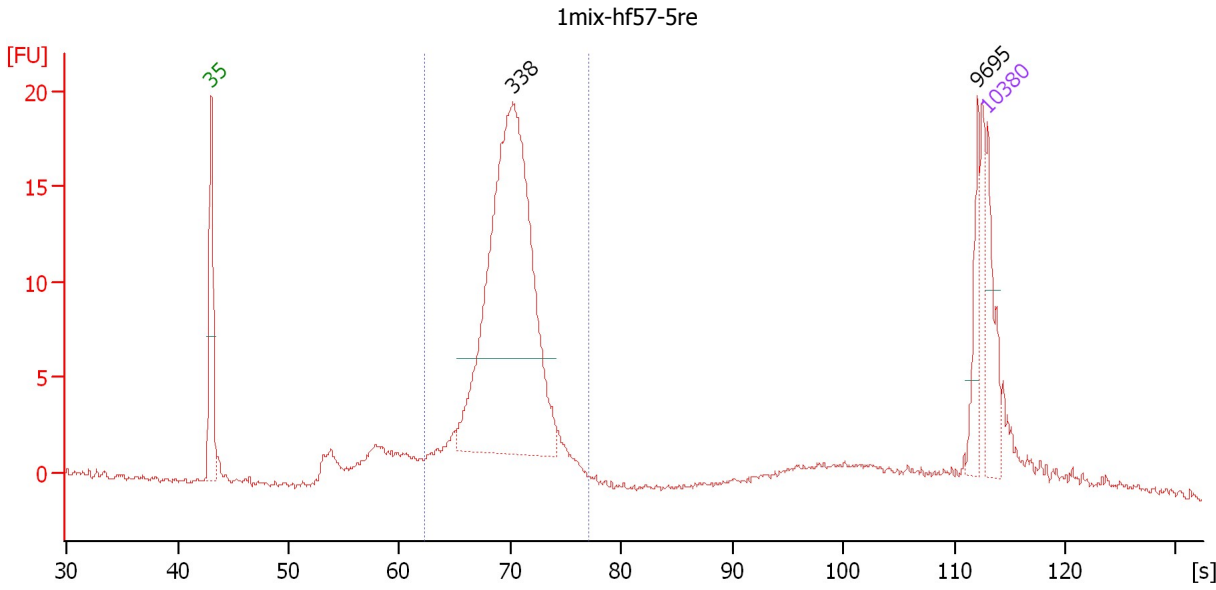
**Region table for sample 1 : 2mix-hf57-mrcbc**

From [s]	Molarity [pmol/l]	Average Size [bp]	Conc. [pg/μl]	To [s]	Corr. Area	% of Total	Size distribution in CV [%]	Color
62.80	12,861.4	338	2,850.11	78.82	327.1	87	8.7	Blue

Assay Class: High Sensitivity DNA Assay  
 Data Path: C:\...ents and Settings\Bioanalyzer\2012-03-07\2012-03-07\_001.xad

Created: 3/7/2012 11:12:20 AM  
 Modified: 3/7/2012 12:03:06 PM

**Electropherogram Summary Continued ...**



**Overall Results for sample 2 : 1mix-hf57-5re**

Number of peaks found: 2                      Corr. Area 1: 148.3  
 Noise: 0.2

**Peak table for sample 2 : 1mix-hf57-5re**

Peak	Size [bp]	Conc. [pg/μl]	Molarity [pmol/l]	Observations
1	35	125.00	5,411.3	Lower Marker
2	338	936.39	4,199.8	
3	9,695	55.26	8.6	
4	10,380	75.00	10.9	Upper Marker

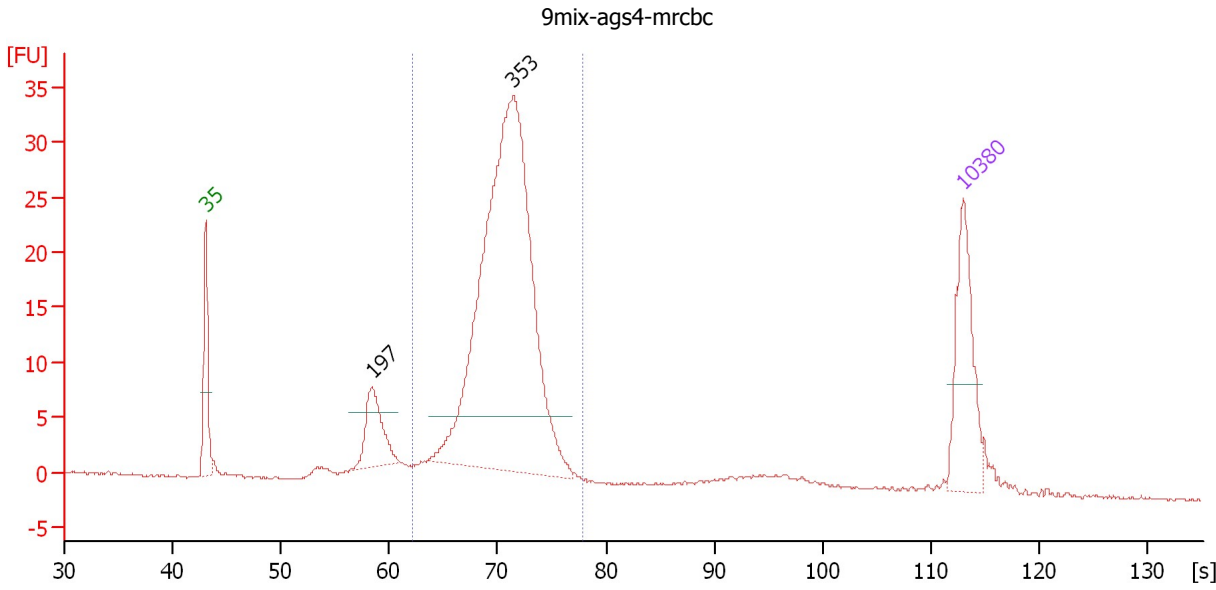
**Region table for sample 2 : 1mix-hf57-5re**

From [s]	Molarity [pmol/l]	Average Size [bp]	Conc. [pg/μl]	To [s]	Corr. Area	% of Total	Size distribution in CV [%]	Color
62.18	5,465.3	333	1,189.52	77.13	148.3	69	9.2	Blue

Assay Class: High Sensitivity DNA Assay  
 Data Path: C:\...ents and Settings\Bioanalyzer\2012-03-07\2012-03-07\_001.xad

Created: 3/7/2012 11:12:20 AM  
 Modified: 3/7/2012 12:03:06 PM

**Electropherogram Summary Continued ...**



**Overall Results for sample 3 : 9mix-ags4-mrcbc**

Number of peaks found: 2                      Corr. Area 1: 276.0  
 Noise: 0.1

**Peak table for sample 3 : 9mix-ags4-mrcbc**

Peak	Size [bp]	Conc. [pg/μl]	Molarity [pmol/l]	Observations
1	35	125.00	5,411.3	Lower Marker
2	197	72.02	554.1	
3	353	671.34	2,879.9	
4	10,380	75.00	10.9	Upper Marker

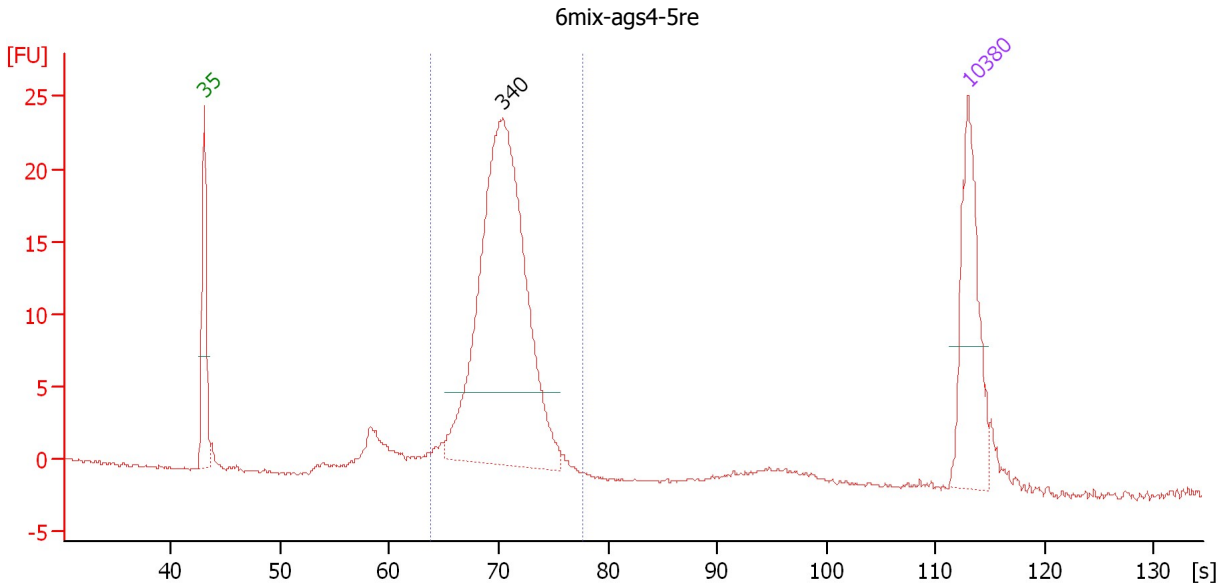
**Region table for sample 3 : 9mix-ags4-mrcbc**

From [s]	Molarity [pmol/l]	Average Size [bp]	Conc. [pg/μl]	To [s]	Corr. Area	% of Total	Size distribution in CV [%]	Color
62.17	3,398.5	342	761.08	77.83	276.0	81	9.3	Blue

Assay Class: High Sensitivity DNA Assay  
 Data Path: C:\...ents and Settings\Bioanalyzer\2012-03-07\2012-03-07\_001.xad

Created: 3/7/2012 11:12:20 AM  
 Modified: 3/7/2012 12:03:06 PM

**Electropherogram Summary Continued ...**



**Overall Results for sample 4 : 6mix-ags4-5re**

Number of peaks found: 1      Corr. Area 1: 177.8  
 Noise: 0.1

**Peak table for sample 4 : 6mix-ags4-5re**

Peak	Size [bp]	Conc. [pg/μl]	Molarity [pmol/l]	Observations
1	35	125.00	5,411.3	Lower Marker
2	340	434.54	1,935.2	
3	10,380	75.00	10.9	Upper Marker

**Region table for sample 4 : 6mix-ags4-5re**

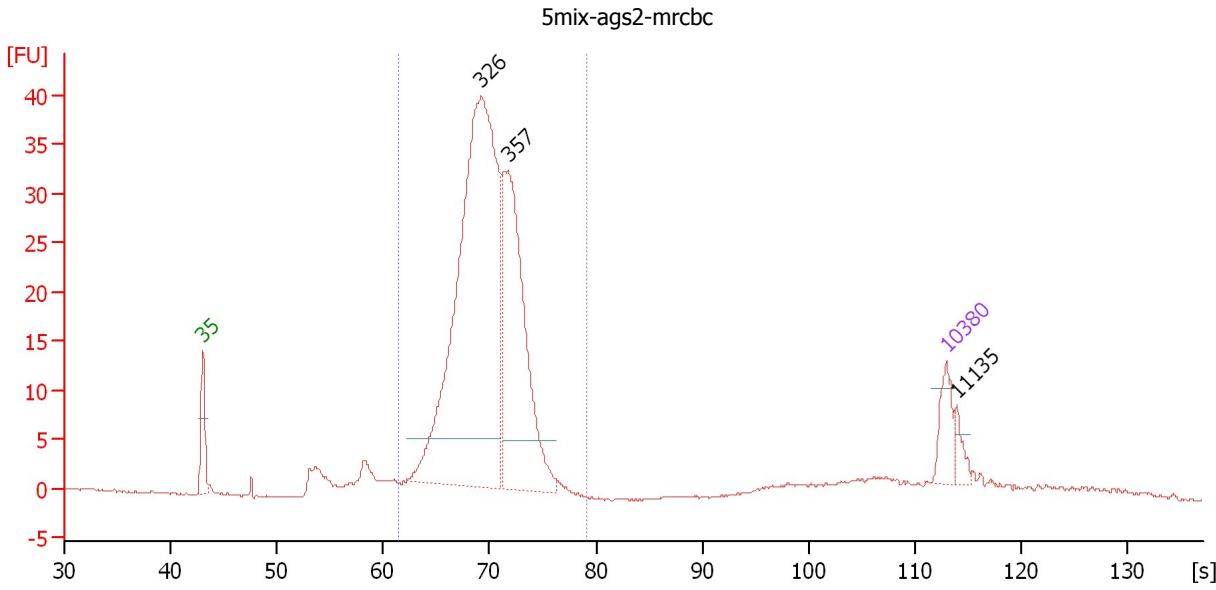
From [s]	Molarity [pmol/l]	Average Size [bp]	Conc. [pg/μl]	To [s]	Corr. Area	% of Total	Size distribution in CV [%]	Color
63.79	2,114.5	339	470.74	77.66	177.8	87	8.2	Blue



Assay Class: High Sensitivity DNA Assay  
 Data Path: C:\...ents and Settings\Bioanalyzer\2012-03-07\2012-03-07\_001.xad

Created: 3/7/2012 11:12:20 AM  
 Modified: 3/7/2012 12:03:06 PM

**Electropherogram Summary Continued ...**



**Overall Results for sample 5 : 5mix-ags2-mrcbc**

Number of peaks found: 3                      Corr. Area 1: 368.1  
 Noise: 0.1

**Peak table for sample 5 : 5mix-ags2-mrcbc**

Peak	Size [bp]	Conc. [pg/μl]	Molarity [pmol/l]	Observations
1	35	125.00	5,411.3	Lower Marker
2	326	2,029.60	9,433.8	
3	357	859.40	3,650.5	
4	10,380	75.00	10.9	Upper Marker
5	11,135	0.00	0.0	

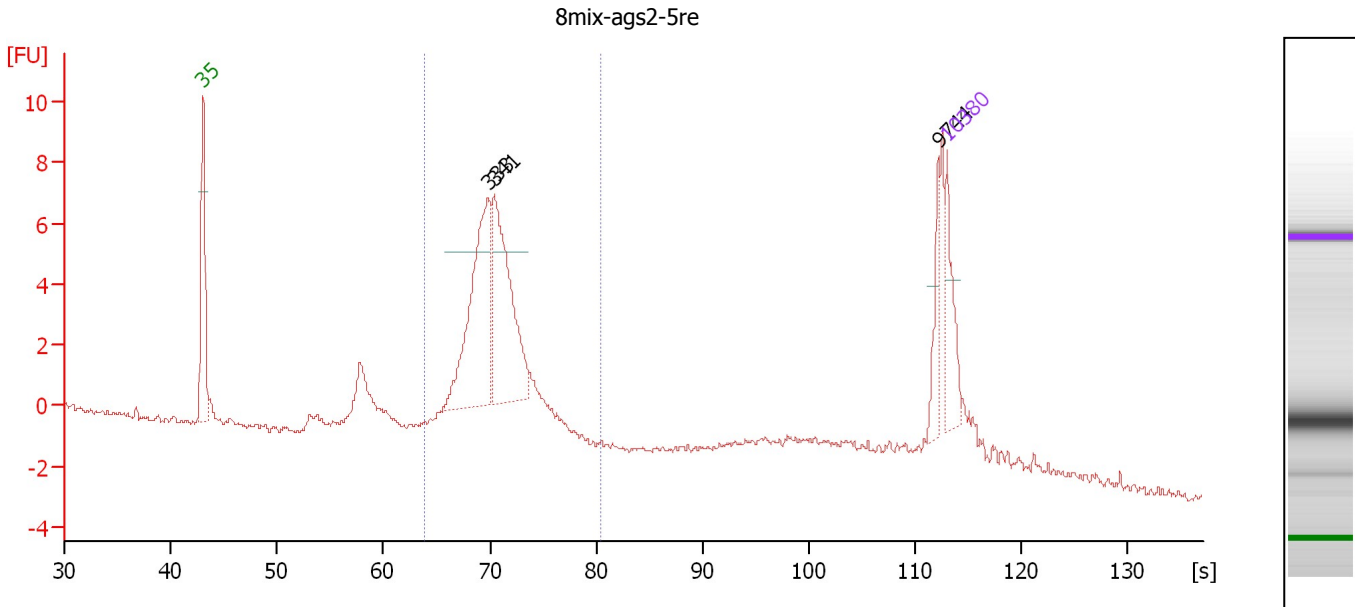
**Region table for sample 5 : 5mix-ags2-mrcbc**

From [s]	Molarity [pmol/l]	Average Size [bp]	Conc. [pg/μl]	To [s]	Corr. Area	% of Total	Size distribution in CV [%]	Color
61.42	14,110.2	332	3,061.30	79.07	368.1	84	9.8	Blue

Assay Class: High Sensitivity DNA Assay  
 Data Path: C:\...ents and Settings\Bioanalyzer\2012-03-07\2012-03-07\_001.xad

Created: 3/7/2012 11:12:20 AM  
 Modified: 3/7/2012 12:03:06 PM

**Electropherogram Summary Continued ...**



**Overall Results for sample 6 : 8mix-ags2-5re**

Number of peaks found: 3      Corr. Area 1: 61.7  
 Noise: 0.1

**Peak table for sample 6 : 8mix-ags2-5re**

Peak	Size [bp]	Conc. [pg/μl]	Molarity [pmol/l]	Observations
1	35	125.00	5,411.3	Lower Marker
2	333	363.70	1,653.6	
3	341	329.74	1,466.1	
4	9,744	54.21	8.4	
5	10,380	75.00	10.9	Upper Marker

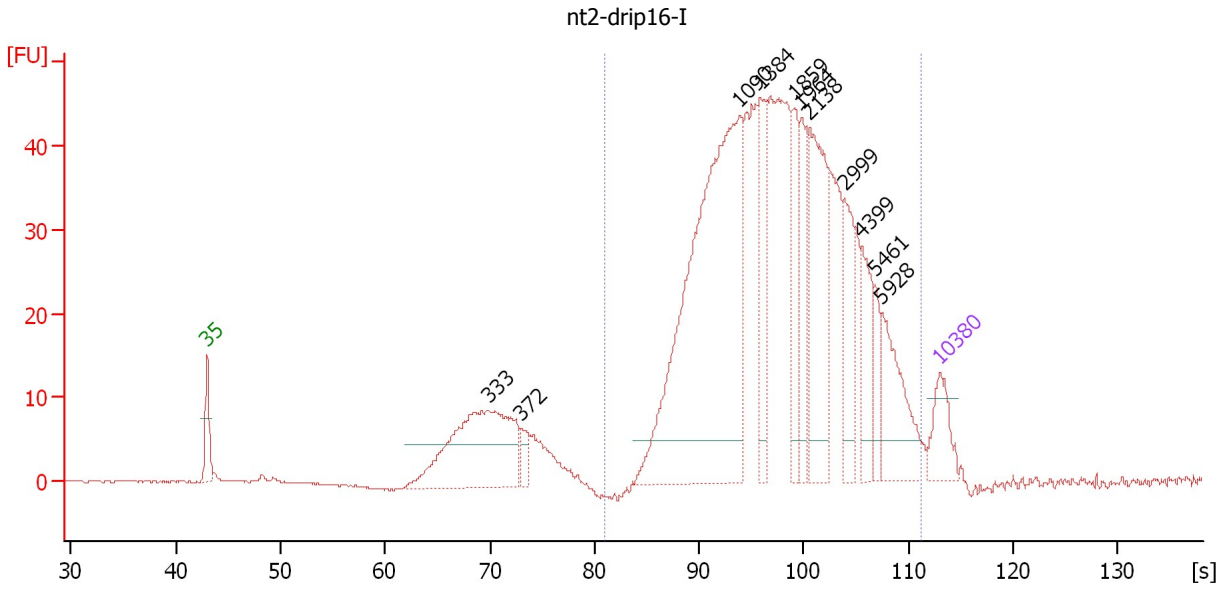
**Region table for sample 6 : 8mix-ags2-5re**

From [s]	Molarity [pmol/l]	Average Size [bp]	Conc. [pg/μl]	To [s]	Corr. Area	% of Total	Size distribution in CV [%]	Color
63.78	4,964.9	344	1,116.05	80.41	61.7	57	10.3	Blue

Assay Class: High Sensitivity DNA Assay  
 Data Path: C:\...ents and Settings\Bioanalyzer\2012-03-07\2012-03-07\_001.xad

Created: 3/7/2012 11:12:20 AM  
 Modified: 3/7/2012 12:03:06 PM

**Electropherogram Summary Continued ...**



**Overall Results for sample 7 : nt2-drip16-I**

Number of peaks found: 11                      Corr. Area 1: 794.0  
 Noise: 0.1

**Peak table for sample 7 : nt2-drip16-I**

Peak	Size [bp]	Conc. [pg/μl]	Molarity [pmol/l]	Observations
1	35	125.00	5,411.3	Lower Marker
2	333	492.60	2,239.4	
3	372	40.20	163.7	
4	1,090	1,104.59	1,534.8	
5	1,384	165.10	180.7	
6	1,859	120.13	97.9	
7	1,964	122.53	94.5	
8	2,138	271.92	192.7	
9	2,999	125.20	63.3	
10	4,399	118.32	40.8	
11	5,461	52.29	14.5	
12	5,928	170.47	43.6	
13	10,380	75.00	10.9	Upper Marker

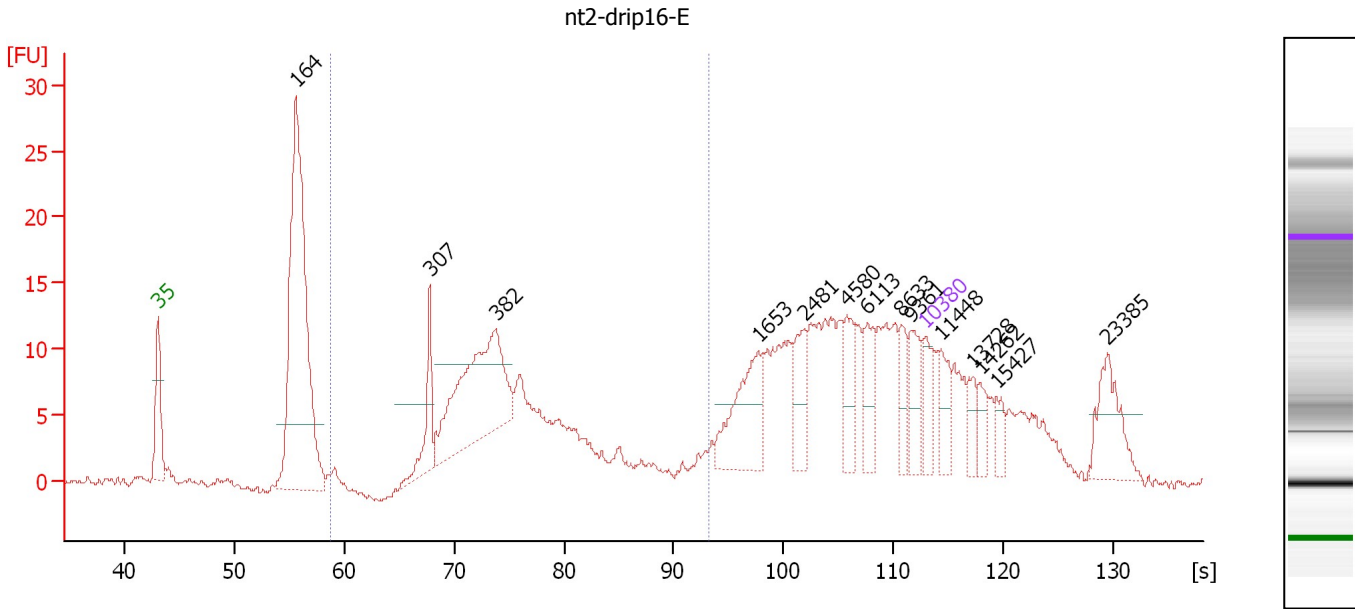
**Region table for sample 7 : nt2-drip16-I**

From [s]	Molarity [pmol/l]	Average Size [bp]	Conc. [pg/μl]	To [s]	Corr. Area	% of Total	Size distribution in CV [%]	Color
80.99	3,676.8	2,182	3,300.40	111.24	794.0	88	77.8	Blue

Assay Class: High Sensitivity DNA Assay  
 Data Path: C:\...ents and Settings\Bioanalyzer\2012-03-07\2012-03-07\_001.xad

Created: 3/7/2012 11:12:20 AM  
 Modified: 3/7/2012 12:03:06 PM

**Electropherogram Summary Continued ...**



**Overall Results for sample 8 : nt2-drip16-E**

Number of peaks found: 14      Corr. Area 1: 131.1  
 Noise: 0.3

**Peak table for sample 8 : nt2-drip16-E**

Peak	Size [bp]	Conc. [pg/μl]	Molarity [pmol/l]	Observations
1	35	125.00	5,411.3	Lower Marker
2	164	1,483.27	13,728.5	
3	307	173.47	854.9	
4	382	664.39	2,632.4	
5	1,653	263.34	241.3	
6	2,481	119.82	73.2	
7	4,580	117.01	38.7	
8	6,113	117.60	29.1	
9	8,633	80.02	14.0	
10	9,361	105.45	17.1	
11	10,380	75.00	10.9	Upper Marker
12	11,448	0.00	0.0	
13	13,728	0.00	0.0	
14	14,262	0.00	0.0	
15	15,427	0.00	0.0	
16	23,385	0.00	0.0	

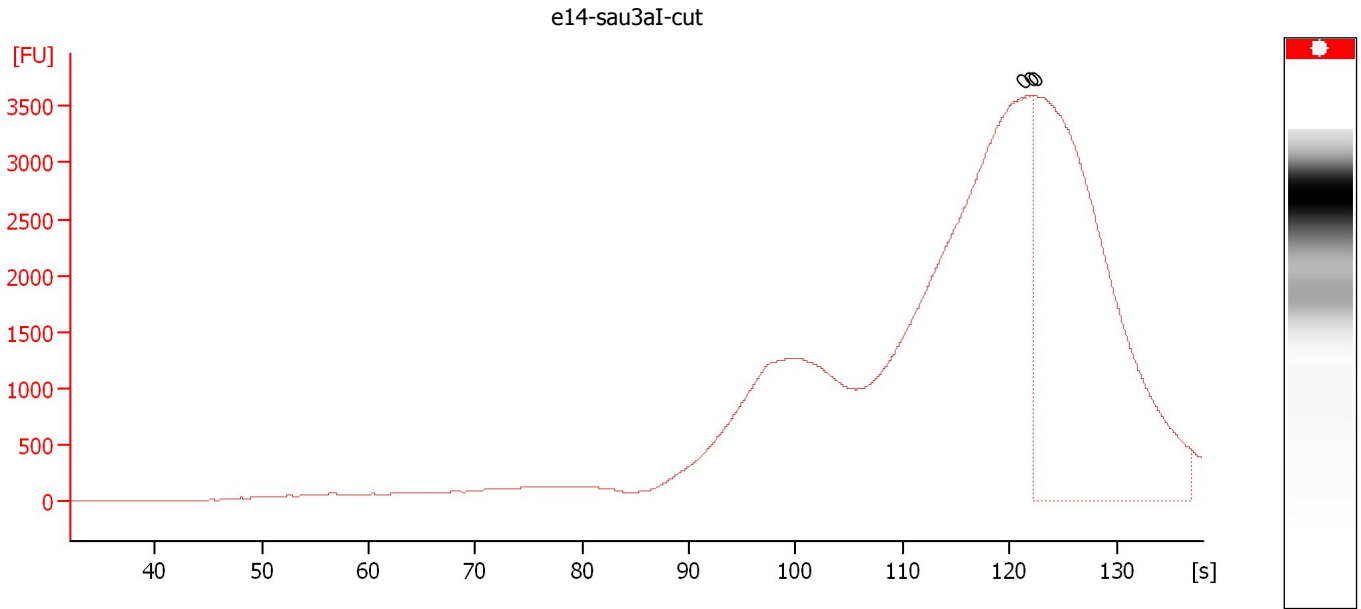
**Region table for sample 8 : nt2-drip16-E**

From [s]	Molarity [pmol/l]	Average Size [bp]	Conc. [pg/μl]	To [s]	Corr. Area	% of Total	Size distribution in CV [%]	Color
58.65	7,937.1	424	2,059.73	93.24	131.1	29	29.7	Blue

Assay Class: High Sensitivity DNA Assay  
Data Path: C:\...ents and Settings\Bioanalyzer\2012-03-07\2012-03-07\_001.xad

Created: 3/7/2012 11:12:20 AM  
Modified: 3/7/2012 12:03:06 PM

**Electropherogram Summary Continued ...**



**Overall Results for sample 9 : e14-sau3aI-cut**

Number of peaks found: 0                      Noise: 0.5

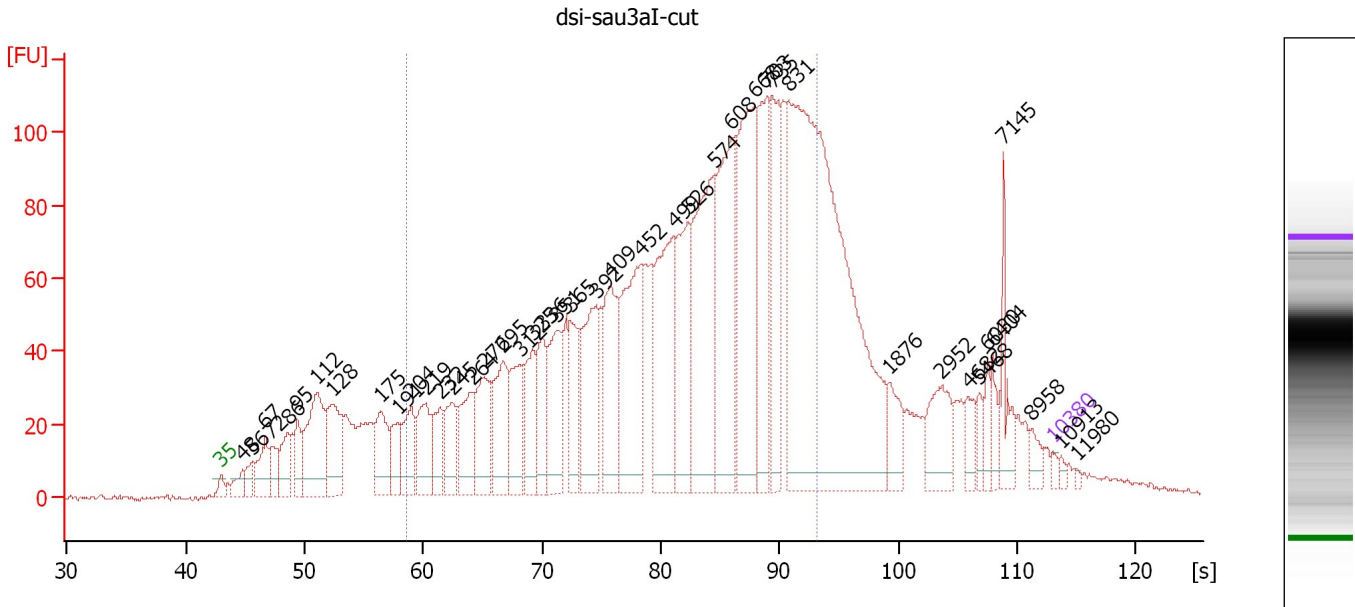
**Peak table for sample 9 : e14-sau3aI-cut**

Peak	Size [bp]	Conc. [pg/μl]	Molarity [pmol/l]	Observations
1	0	0.00	0.0	
2	0	0.00	0.0	
3	0	0.00	0.0	

Assay Class: High Sensitivity DNA Assay  
 Data Path: C:\...ents and Settings\Bioanalyzer\2012-03-07\2012-03-07\_001.xad

Created: 3/7/2012 11:12:20 AM  
 Modified: 3/7/2012 12:03:06 PM

**Electropherogram Summary Continued ...**



**Overall Results for sample 10 : dsi-sau3aI-cut**

Number of peaks found: 43                      Corr. Area 1: 2,654.9  
 Noise: 0.6

**Peak table for sample 10 : dsi-sau3aI-cut**

Peak	Size [bp]	Conc. [pg/μl]	Molarity [pmol/l]	Observations
1	35	125.00	5,411.3	Lower Marker
2	48	404.45	12,668.5	
3	56	370.07	10,008.3	
4	67	937.51	21,189.2	
5	72	630.83	13,259.5	
6	86	921.88	16,183.5	
7	95	700.55	11,224.0	
8	112	2,640.60	35,586.8	
9	128	1,742.91	20,654.3	
10	175	1,228.82	10,658.2	
11	191	694.54	5,509.9	
12	204	1,122.27	8,327.9	
13	219	1,256.36	8,710.3	
14	232	814.71	5,312.2	
15	245	1,009.13	6,250.9	
16	264	1,252.63	7,181.4	
17	276	1,474.24	8,093.6	
18	295	1,606.57	8,262.8	
19	312	1,174.02	5,696.9	
20	325	1,123.02	5,233.4	
21	336	1,192.15	5,370.4	
22	351	1,618.18	6,975.7	
23	365	1,018.09	4,227.0	
24	392	2,011.50	7,778.1	
25	409	1,877.49	6,960.4	
26	452	2,946.88	9,876.6	

Assay Class: High Sensitivity DNA Assay  
 Data Path: C:\...ents and Settings\Bioanalyzer\2012-03-07\2012-03-07\_001.xad


Created: 3/7/2012 11:12:20 AM  
 Modified: 3/7/2012 12:03:06 PM

**Electropherogram Summary Continued ...**

**... Peak table for sample 10 : dsi-sau3aI-cut**

Peak	Size [bp]	Conc. [pg/µl]	Molarity [pmol/l]	Observations
27	499	2,927.02	8,882.9	
28	526	2,129.39	6,137.9	
29	574	3,583.33	9,460.0	
30	608	3,240.40	8,075.5	
31	668	3,826.80	8,674.0	
32	703	2,249.92	4,846.3	
33	735	2,108.88	4,349.6	
34	831	12,060.36	21,980.6	
35	1,876	532.00	429.7	
36	2,952	869.67	446.4	
37	4,682	330.16	106.9	
38	5,468	210.05	58.2	
39	6,030	251.89	63.3	
40	6,404	328.39	77.7	
41	7,145	601.26	127.5	
42	8,958	232.53	39.3	
43	10,380	75.00	10.9	Upper Marker
44	10,913	0.00	0.0	
45	11,980	0.00	0.0	

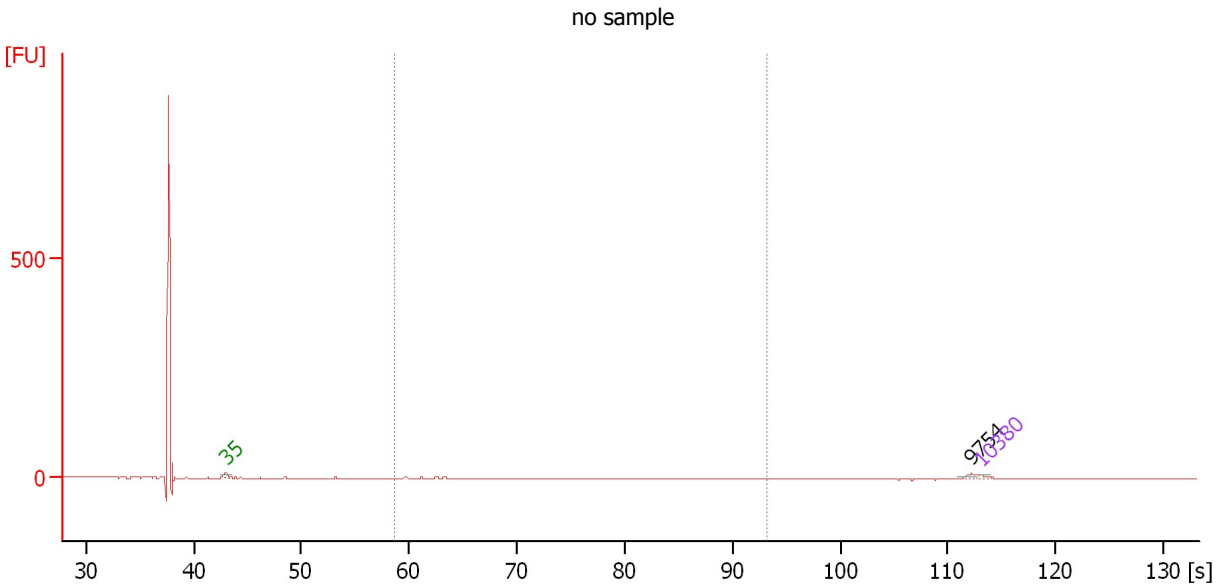
**Region table for sample 10 : dsi-sau3aI-cut**

From [s]	Molarity [pmol/l]	Average Size [bp]	Conc. [pg/µl]	To [s]	Corr. Area	% of Total	Size distribution in CV [%]	Color
58.65	180,735.5	549	52,071.70	93.24	2,654.9	68	36.8	

Assay Class: High Sensitivity DNA Assay  
 Data Path: C:\...ents and Settings\Bioanalyzer\2012-03-07\2012-03-07\_001.xad

Created: 3/7/2012 11:12:20 AM  
 Modified: 3/7/2012 12:03:06 PM

**Electropherogram Summary Continued ...**



**Overall Results for sample 11 : no sample**

Number of peaks found: 1                      Corr. Area 1: 1.8  
 Noise: 0.6

**Peak table for sample 11 : no sample**

Peak	Size [bp]	Conc. [pg/μl]	Molarity [pmol/l]	Observations
1	35	125.00	5,411.3	Lower Marker
2	9,754	125.96	19.6	
3	10,380	75.00	10.9	Upper Marker

**Region table for sample 11 : no sample**

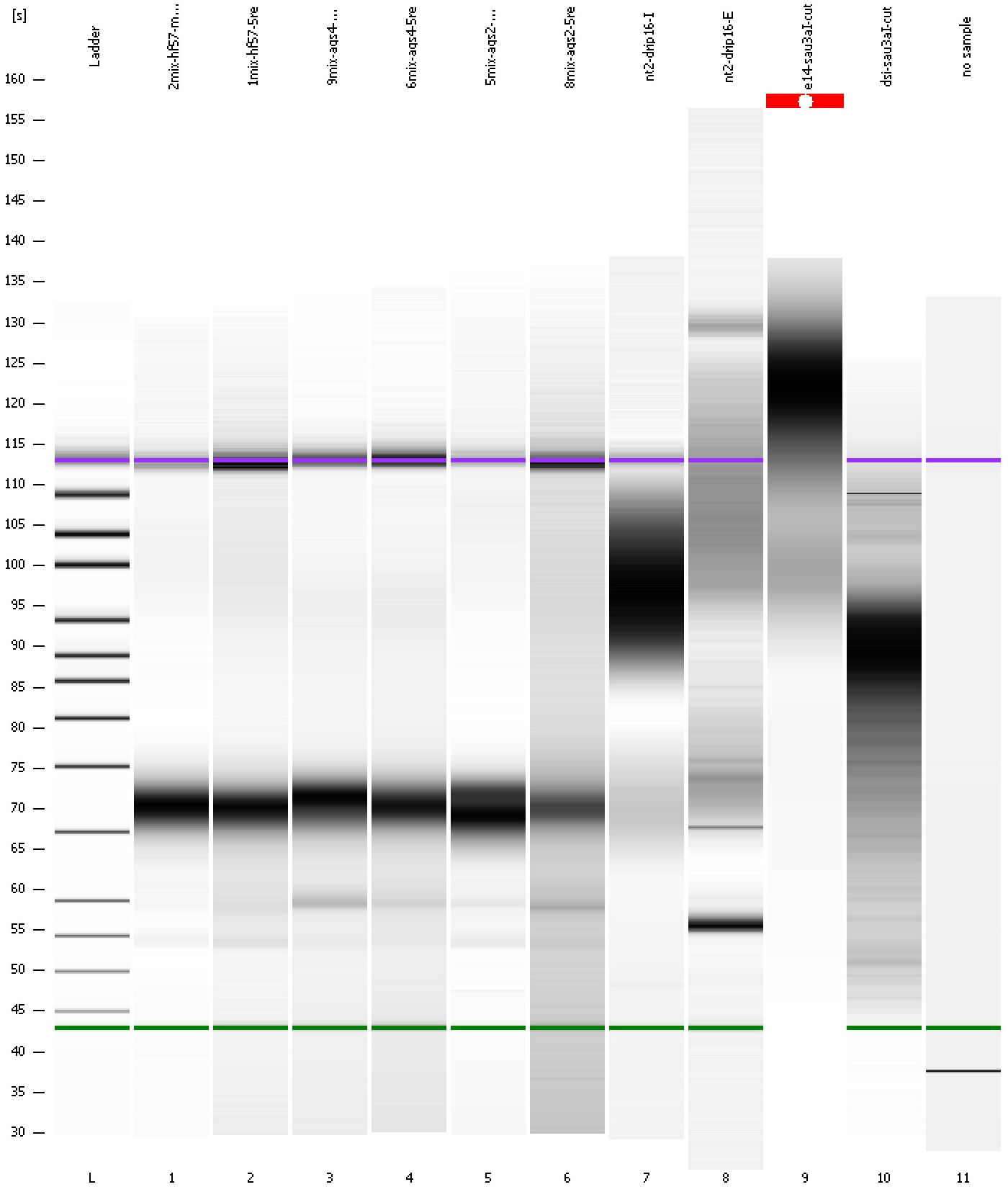
From [s]	Molarity [pmol/l]	Average Size [bp]	Conc. [pg/μl]	To [s]	Corr. Area	% of Total	Size distribution in CV [%]	Color
58.65	205.7	239	32.44	93.24	1.8	0	8.0	Blue



Assay Class: High Sensitivity DNA Assay  
Data Path: C:\...ents and Settings\Bioanalyzer\2012-03-07\2012-03-07\_001.xad

Created: 3/7/2012 11:12:20 AM  
Modified: 3/7/2012 12:03:06 PM

Gel Image



Assay Class: High Sensitivity DNA Assay  
 Data Path: C:\...ents and Settings\Bioanalyzer\2012-03-07\2012-03-07\_001.xad

Created: 3/7/2012 11:12:20 AM  
 Modified: 3/7/2012 12:03:06 PM

**Run Logbook**

Description	Number	Source	Category	Sub Category	Time	Time Zone	User	Host
Run ended on port 1 (Number of wells acquired: 12)		Instrument	Run		3/7/2012 11:53:33 AM	(GMT --08:00) Pacific Standard Time	UC Davis	D8XSMGH1
Run started on port 1 (File: C:\Documents and Settings\Bioanalyzer\2012-03-07\2012-03-07_001.xad)		Instrument	Run		3/7/2012 11:12:20 AM	(GMT --08:00) Pacific Standard Time	UC Davis	D8XSMGH1
Product Number : G2938B		Instrument	Run		3/7/2012 11:12:20 AM	(GMT --08:00) Pacific Standard Time	UC Davis	D8XSMGH1
Name :		Instrument	Run		3/7/2012 11:12:20 AM	(GMT --08:00) Pacific Standard Time	UC Davis	D8XSMGH1
Vendor : Agilent Technologies		Instrument	Run		3/7/2012 11:12:20 AM	(GMT --08:00) Pacific Standard Time	UC Davis	D8XSMGH1
Serial# : DE13701086		Instrument	Run		3/7/2012 11:12:20 AM	(GMT --08:00) Pacific Standard Time	UC Davis	D8XSMGH1
Firmware : C.01.069		Instrument	Run		3/7/2012 11:12:20 AM	(GMT --08:00) Pacific Standard Time	UC Davis	D8XSMGH1
Cartridge : Electrode		Instrument	Run		3/7/2012 11:12:20 AM	(GMT --08:00) Pacific Standard Time	UC Davis	D8XSMGH1