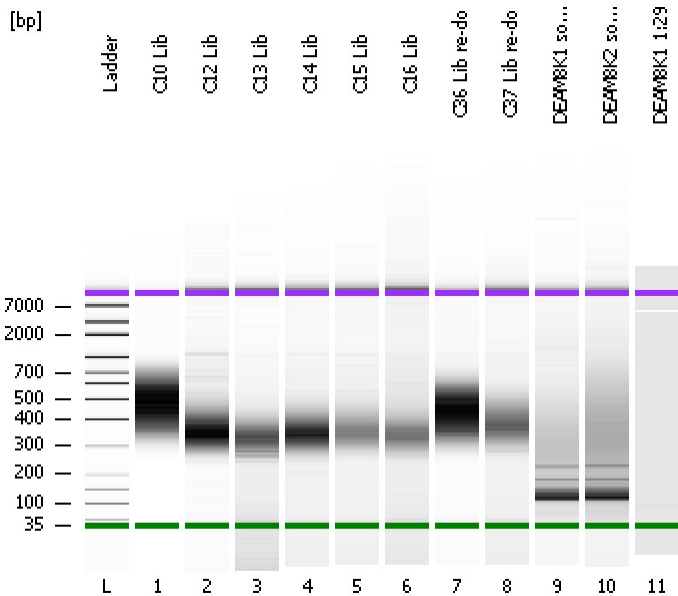


Assay Class: High Sensitivity DNA Assay  
Data Path: C:\...ents and Settings\Bioanalyzer\2012-03-07\2012-03-07\_002.xad

Created: 3/7/2012 1:00:07 PM  
Modified: 3/7/2012 1:41:28 PM

Electrophoresis File Run Summary



Instrument Information:

Instrument Name: DE13701086      Firmware: C.01.069  
Serial#: DE13701086      Type: G2938B

Assay Information:

Assay Origin Path: C:\Program Files\Agilent\2100 bioanalyzer\2100 expert\assays\dsDNA\High Sensitivity DNA.xsy  
Assay Class: High Sensitivity DNA Assay  
Version: 1.03  
Assay Comments: Copyright © 2003-2010 Agilent Technologies

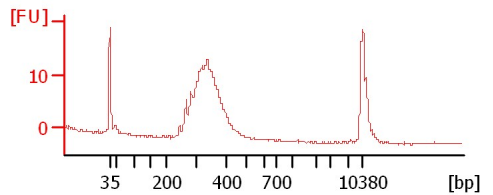
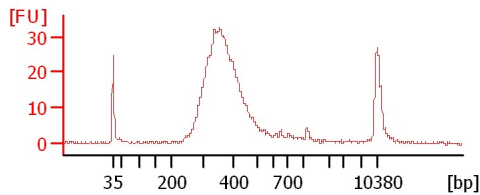
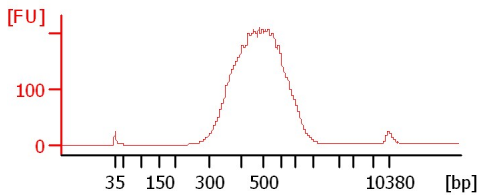
Chip Information:

Chip Lot #:  
Reagent Kit Lot #:  
Chip Comments:

C10 Lib

C12 Lib

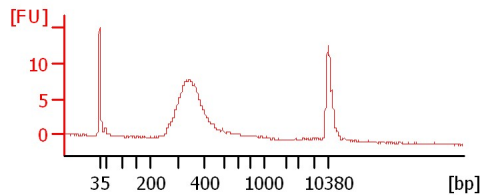
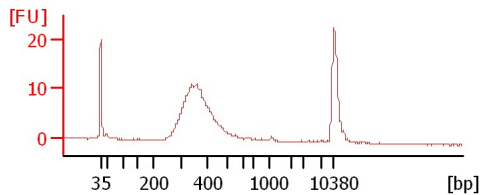
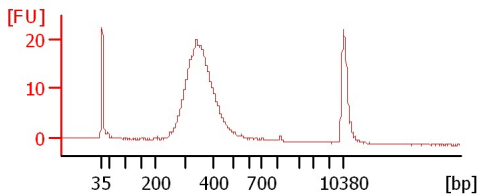
C13 Lib



C14 Lib

C15 Lib

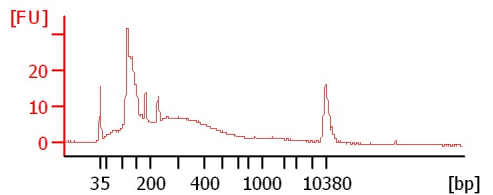
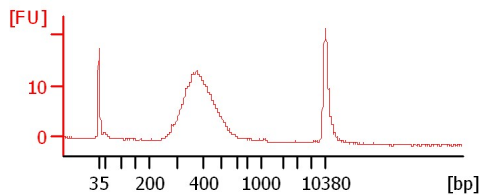
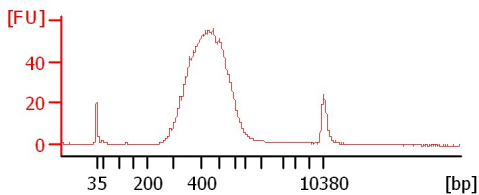
C16 Lib



C36 Lib re-do

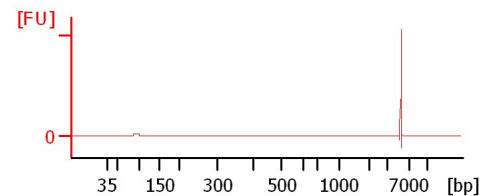
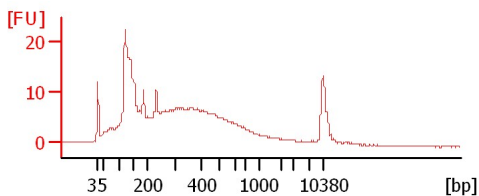
C37 Lib re-do

DEAM8K1 son 1:29



DEAM8K2 son 1:29

DEAM8K1 1:29



Assay Class: High Sensitivity DNA Assay  
 Data Path: C:\...ents and Settings\Bioanalyzer\2012-03-07\2012-03-07\_002.xad

Created: 3/7/2012 1:00:07 PM  
 Modified: 3/7/2012 1:41:28 PM

**Electrophoresis File Run Summary (Chip Summary)**

Sample Name	Sample Comment	Rest. Digest	Status	Observation	Result Label	Result Color
C10 Lib		<input type="checkbox"/>	✓			
C12 Lib		<input type="checkbox"/>	✓			
C13 Lib		<input type="checkbox"/>	✓			
C14 Lib		<input type="checkbox"/>	✓			
C15 Lib		<input type="checkbox"/>	✓			
C16 Lib		<input type="checkbox"/>	✓			
C36 Lib re-do		<input type="checkbox"/>	✓			
C37 Lib re-do		<input type="checkbox"/>	✓			
DEAM8K1 son 1:29		<input type="checkbox"/>	✓			
DEAM8K2 son 1:29		<input type="checkbox"/>	✓			
DEAM8K1 1:29		<input type="checkbox"/>	✓			
Ladder		<input type="checkbox"/>	✓			

**Chip Lot #**

**Reagent Kit Lot #**

**Chip Comments :**

Assay Class: High Sensitivity DNA Assay  
Data Path: C:\...ents and Settings\Bioanalyzer\2012-03-07\2012-03-07\_002.xad

Created: 3/7/2012 1:00:07 PM  
Modified: 3/7/2012 1:41:28 PM

**Electrophoresis Assay Details**

**General Analysis Settings**

Number of Available Sample and Ladder Wells (Max.) : 12  
Minimum Visible Range [s] : 32  
Maximum Visible Range [s] : 138  
Start Analysis Time Range [s] : 33  
End Analysis Time Range [s] : 137.5  
Ladder Concentration [pg/μl] : 1950  
Uses Standard Area for Ladder Fragments  
Lower Marker Concentration [pg/μl] : 125  
Upper Marker Concentration [pg/μl] : 75  
Used Upper Marker for Quantitation  
Standard Curve Fit is Point to Point  
Show Data Aligned to Lower and Upper Marker

**Integrator Settings**

Integration Start Time [s] : 33.05  
Integration End Time [s] : 137  
Slope Threshold : 0.8  
Height Threshold [FU] : 5  
Area Threshold : 0.1  
Width Threshold [s] : 0.6  
Baseline Plateau [s] : 0.5

**Filter Settings**

Filter Width [s] : 0.5  
Polynomial Order : 4

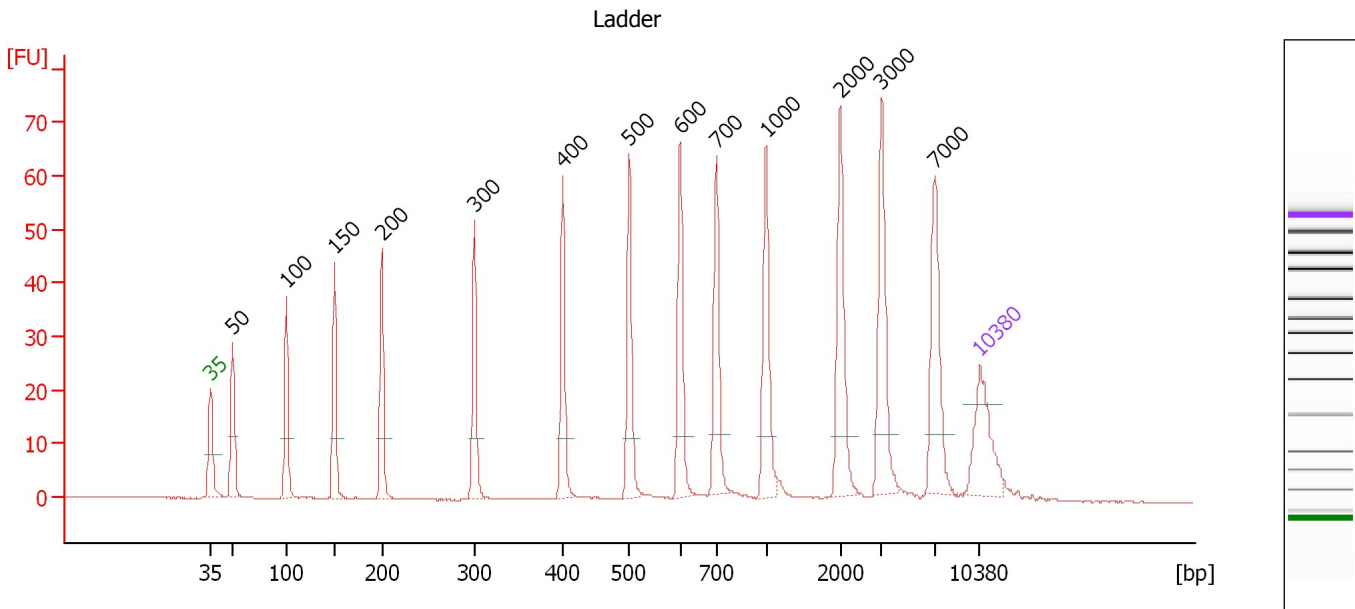
**Ladder**

Ladder Peak	Size	Area
1	35	160
2	50	210
3	100	208
4	150	221
5	200	242
6	300	270
7	400	305
8	500	306
9	600	336
10	700	321
11	1000	366
12	2000	413
13	3000	411
14	7000	400
15	10380	214

Assay Class: High Sensitivity DNA Assay  
 Data Path: C:\...ents and Settings\Bioanalyzer\2012-03-07\2012-03-07\_002.xad

Created: 3/7/2012 1:00:07 PM  
 Modified: 3/7/2012 1:41:28 PM

**Electropherogram Summary**



**Overall Results for Ladder**

Noise: 0.1

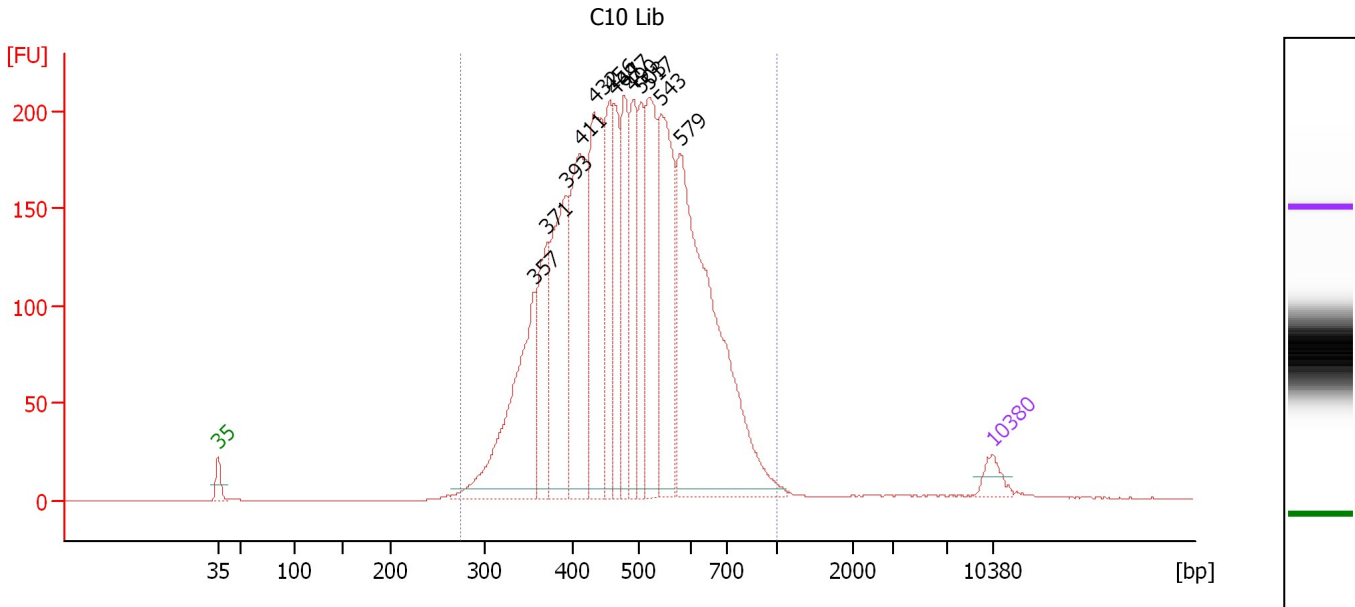
**Peak table for Ladder**

Peak	Size [bp]	Conc. [pg/μl]	Molarity [pmol/l]	Observations
1	35	125.00	5,411.3	Lower Marker
2	50	150.00	4,545.5	Ladder Peak
3	100	150.00	2,272.7	Ladder Peak
4	150	150.00	1,515.2	Ladder Peak
5	200	150.00	1,136.4	Ladder Peak
6	300	150.00	757.6	Ladder Peak
7	400	150.00	568.2	Ladder Peak
8	500	150.00	454.5	Ladder Peak
9	600	150.00	378.8	Ladder Peak
10	700	150.00	324.7	Ladder Peak
11	1,000	150.00	227.3	Ladder Peak
12	2,000	150.00	113.6	Ladder Peak
13	3,000	150.00	75.8	Ladder Peak
14	7,000	150.00	32.5	Ladder Peak
15	10,380	75.00	10.9	Upper Marker

Assay Class: High Sensitivity DNA Assay  
 Data Path: C:\...ents and Settings\Bioanalyzer\2012-03-07\2012-03-07\_002.xad

Created: 3/7/2012 1:00:07 PM  
 Modified: 3/7/2012 1:41:28 PM

**Electropherogram Summary Continued ...**



**Overall Results for sample 1 : C10 Lib**

Number of peaks found: 13                      Corr. Area 1: 4,032.6  
 Noise: 0.1

**Peak table for sample 1 : C10 Lib**

Peak	Size [bp]	Conc. [pg/μl]	Molarity [pmol/l]	Observations
1	35	125.00	5,411.3	Lower Marker
2	357	1,205.93	5,115.6	
3	371	656.08	2,679.9	
4	393	1,032.21	3,978.8	
5	411	1,149.93	4,241.8	
6	432	1,089.71	3,825.7	
7	456	632.06	2,102.0	
8	464	476.43	1,557.1	
9	477	621.39	1,972.9	
10	490	582.69	1,801.6	
11	503	467.04	1,407.8	
12	517	880.60	2,580.1	
13	543	1,043.30	2,911.2	
14	579	2,395.15	6,265.6	
15	10,380	75.00	10.9	Upper Marker

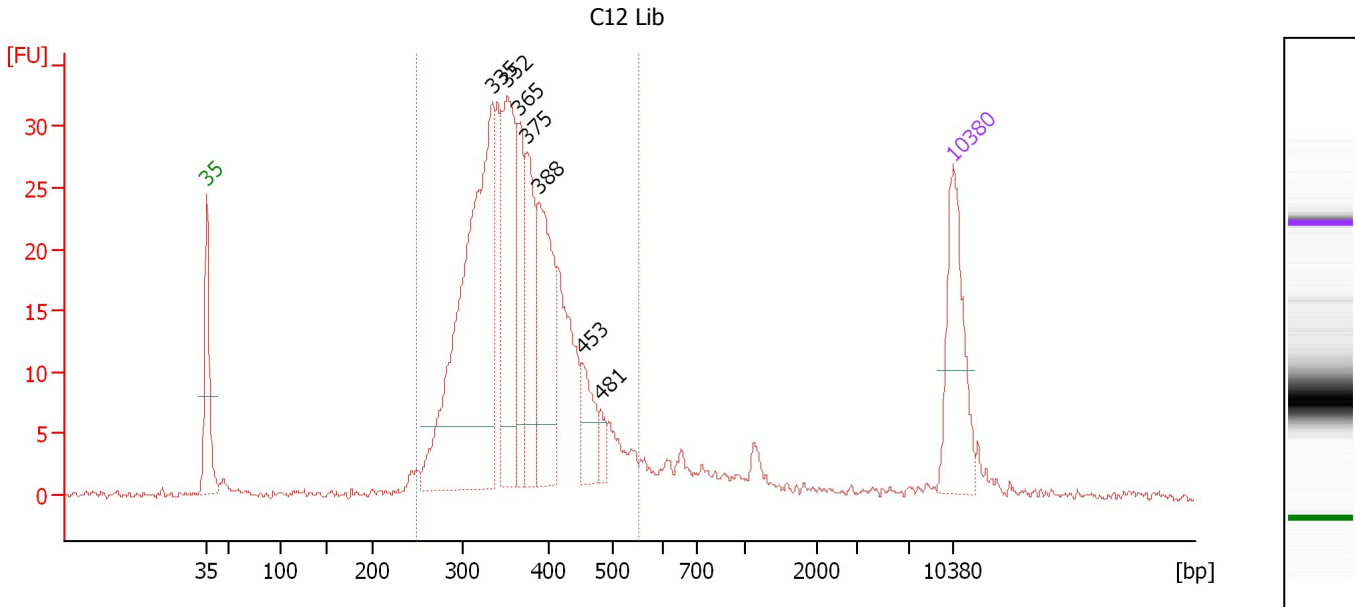
**Region table for sample 1 : C10 Lib**

From [bp]	Molarity [pmol/l]	Average Size [bp]	Conc. [pg/μl]	To [bp]	Corr. Area	% of Total	Size distribution in CV [%]	Color
275	40,511.9	494	12,349.87	1,000	4,032.6	99	23.1	Blue

Assay Class: High Sensitivity DNA Assay  
 Data Path: C:\...ents and Settings\Bioanalyzer\2012-03-07\2012-03-07\_002.xad

Created: 3/7/2012 1:00:07 PM  
 Modified: 3/7/2012 1:41:28 PM

**Electropherogram Summary Continued ...**



**Overall Results for sample 2 : C12 Lib**

Number of peaks found: 7      Corr. Area 1: 444.6  
 Noise: 0.2

**Peak table for sample 2 : C12 Lib**

Peak	Size [bp]	Conc. [pg/μl]	Molarity [pmol/l]	Observations
1	35	125.00	5,411.3	Lower Marker
2	335	399.51	1,807.7	
3	352	156.81	674.5	
4	365	65.98	274.1	
5	375	92.21	372.3	
6	388	129.37	504.8	
7	453	42.37	141.6	
8	481	12.47	39.3	
9	10,380	75.00	10.9	Upper Marker

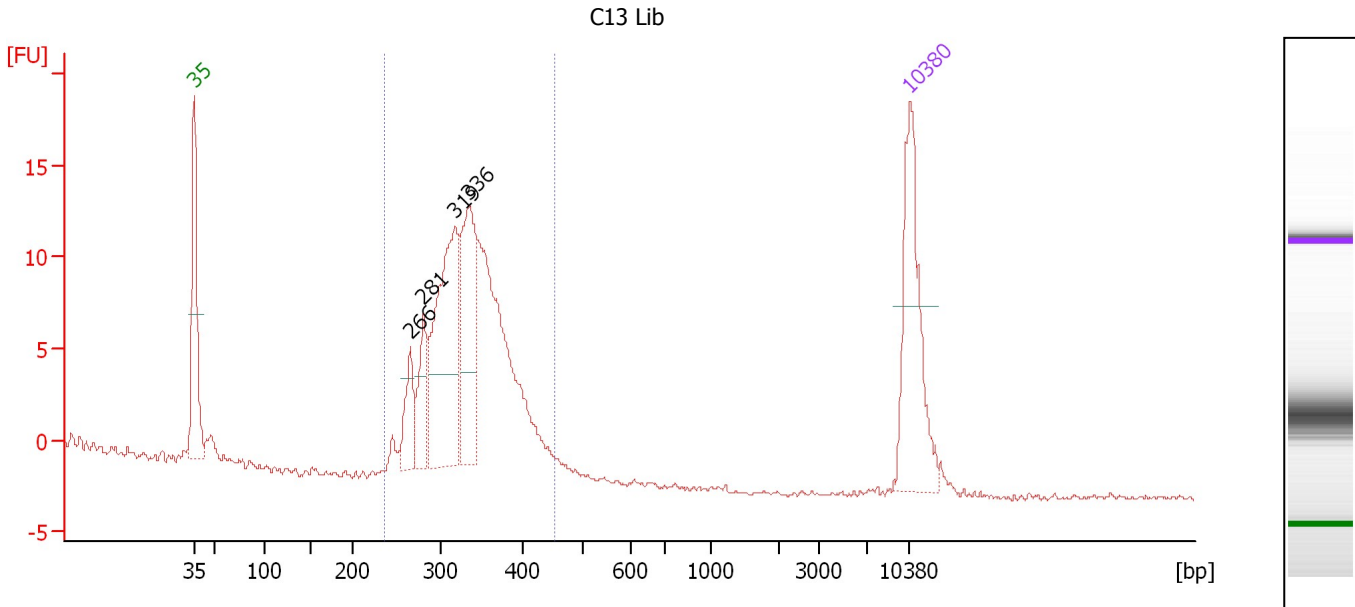
**Region table for sample 2 : C12 Lib**

From [bp]	Molarity [pmol/l]	Average Size [bp]	Conc. [pg/μl]	To [bp]	Corr. Area	% of Total	Size distribution in CV [%]	Color
249	5,031.0	368	1,184.29	553	444.6	89	15.8	Blue

Assay Class: High Sensitivity DNA Assay  
 Data Path: C:\...ents and Settings\Bioanalyzer\2012-03-07\2012-03-07\_002.xad

Created: 3/7/2012 1:00:07 PM  
 Modified: 3/7/2012 1:41:28 PM

**Electropherogram Summary Continued ...**



**Overall Results for sample 3 : C13 Lib**

Number of peaks found: 4                      Corr. Area 1: 148.3  
 Noise: 0.2

**Peak table for sample 3 : C13 Lib**

Peak	Size [bp]	Conc. [pg/μl]	Molarity [pmol/l]	Observations
1	35	125.00	5,411.3	Lower Marker
2	266	31.77	181.0	
3	281	39.14	211.2	
4	319	147.95	703.2	
5	336	103.57	466.6	
6	10,380	75.00	10.9	Upper Marker

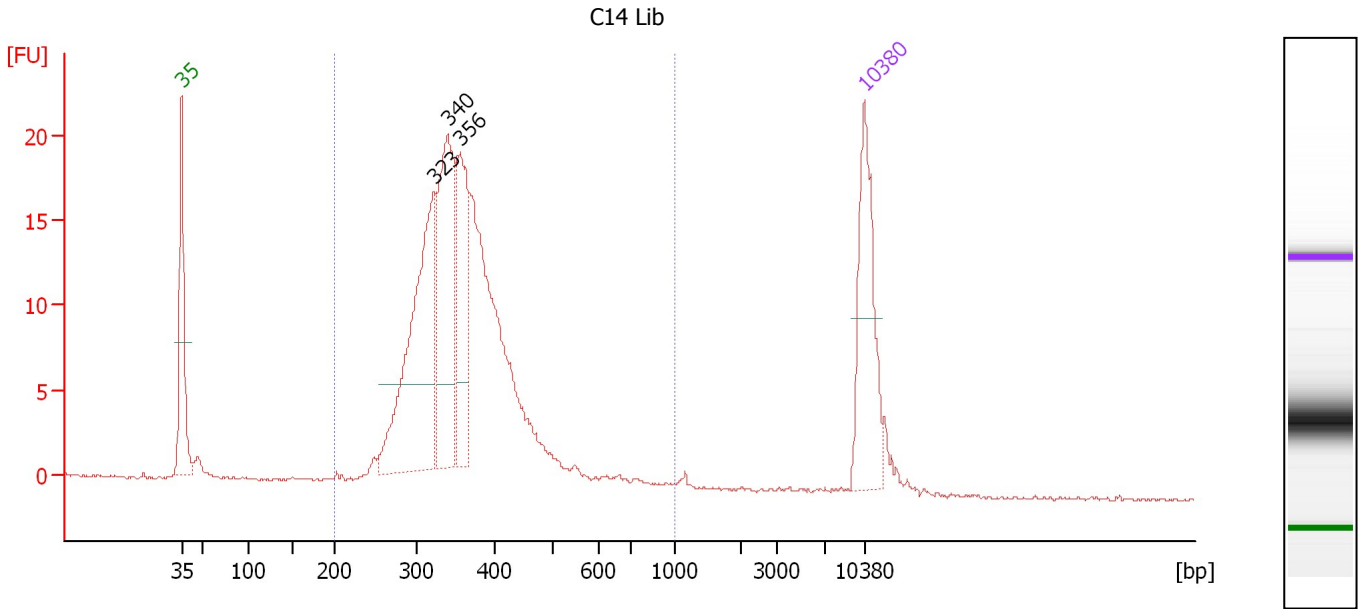
**Region table for sample 3 : C13 Lib**

From [bp]	Molarity [pmol/l]	Average Size [bp]	Conc. [pg/μl]	To [bp]	Corr. Area	% of Total	Size distribution in CV [%]	Color
236	2,286.2	334	496.42	452	148.3	99	11.8	Blue

Assay Class: High Sensitivity DNA Assay  
 Data Path: C:\...ents and Settings\Bioanalyzer\2012-03-07\2012-03-07\_002.xad

Created: 3/7/2012 1:00:07 PM  
 Modified: 3/7/2012 1:41:28 PM

**Electropherogram Summary Continued ...**



**Overall Results for sample 4 : C14 Lib**

Number of peaks found: 3                      Corr. Area 1: 251.8  
 Noise: 0.1

**Peak table for sample 4 : C14 Lib**

Peak	Size [bp]	Conc. [pg/μl]	Molarity [pmol/l]	Observations
1	35	125.00	5,411.3	Lower Marker
2	323	212.52	997.6	
3	340	153.91	685.0	
4	356	106.84	454.7	
5	10,380	75.00	10.9	Upper Marker

**Region table for sample 4 : C14 Lib**

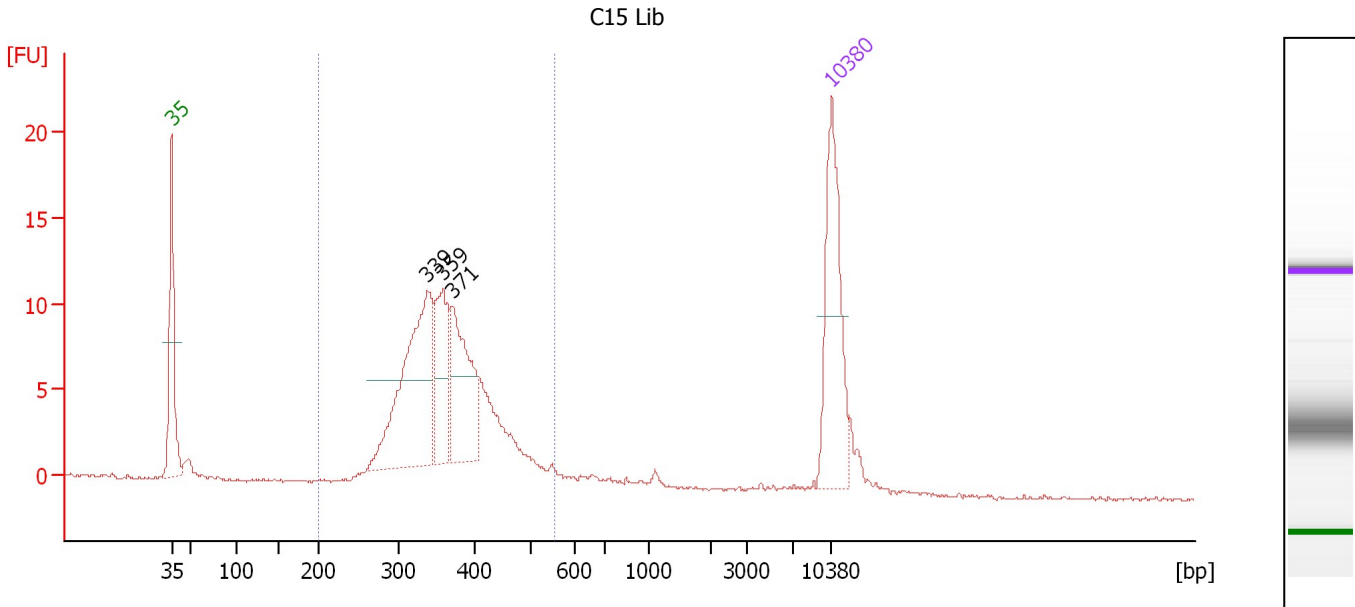
From [bp]	Molarity [pmol/l]	Average Size [bp]	Conc. [pg/μl]	To [bp]	Corr. Area	% of Total	Size distribution in CV [%]	Color
200	3,518.8	365	814.06	1,000	251.8	96	20.3	Blue



Assay Class: High Sensitivity DNA Assay  
 Data Path: C:\...ents and Settings\Bioanalyzer\2012-03-07\2012-03-07\_002.xad

Created: 3/7/2012 1:00:07 PM  
 Modified: 3/7/2012 1:41:28 PM

**Electropherogram Summary Continued ...**



**Overall Results for sample 5 : C15 Lib**

Number of peaks found: 3                      Corr. Area 1: 143.3  
 Noise: 0.1

**Peak table for sample 5 : C15 Lib**

Peak	Size [bp]	Conc. [pg/μl]	Molarity [pmol/l]	Observations
1	35	125.00	5,411.3	Lower Marker
2	339	156.54	700.0	
3	359	52.72	222.4	
4	371	84.34	344.3	
5	10,380	75.00	10.9	Upper Marker

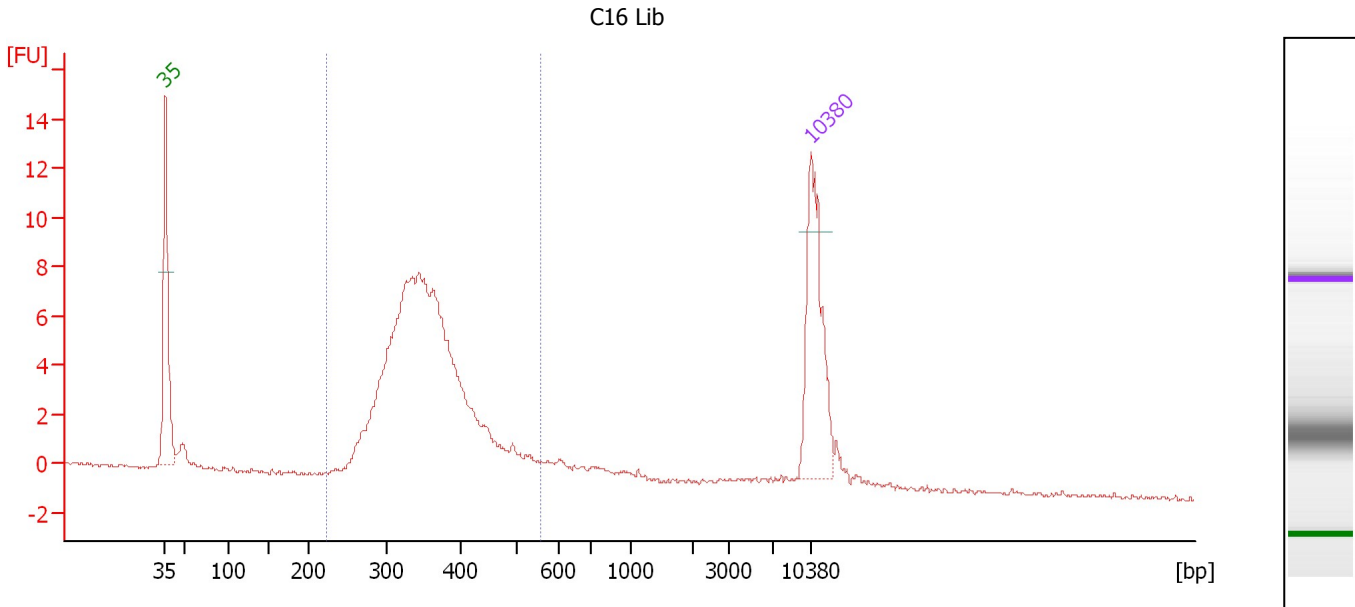
**Region table for sample 5 : C15 Lib**

From [bp]	Molarity [pmol/l]	Average Size [bp]	Conc. [pg/μl]	To [bp]	Corr. Area	% of Total	Size distribution in CV [%]	Color
200	1,939.7	367	456.87	557	143.3	89	15.5	Blue

Assay Class: High Sensitivity DNA Assay  
 Data Path: C:\...ents and Settings\Bioanalyzer\2012-03-07\2012-03-07\_002.xad

Created: 3/7/2012 1:00:07 PM  
 Modified: 3/7/2012 1:41:28 PM

**Electropherogram Summary Continued ...**



**Overall Results for sample 6 : C16 Lib**

Number of peaks found: 0                      Corr. Area 1: 99.7  
 Noise: 0.1

**Peak table for sample 6 : C16 Lib**

Peak	Size [bp]	Conc. [pg/μl]	Molarity [pmol/l]	Observations
1	35	125.00	5,411.3	Lower Marker
2	10,380	75.00	10.9	Upper Marker

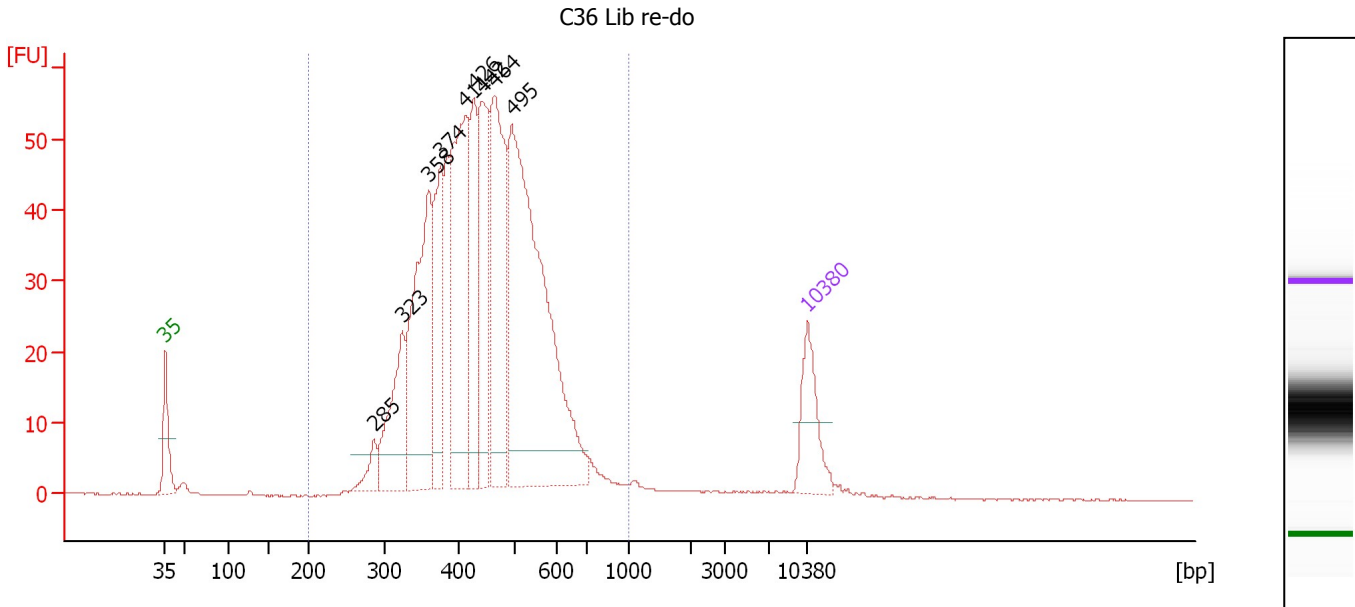
**Region table for sample 6 : C16 Lib**

From [bp]	Molarity [pmol/l]	Average Size [bp]	Conc. [pg/μl]	To [bp]	Corr. Area	% of Total	Size distribution in CV [%]	Color
222	2,247.0	359	516.51	556	99.7	86	15.9	Blue

Assay Class: High Sensitivity DNA Assay  
 Data Path: C:\...ents and Settings\Bioanalyzer\2012-03-07\2012-03-07\_002.xad

Created: 3/7/2012 1:00:07 PM  
 Modified: 3/7/2012 1:41:28 PM

**Electropherogram Summary Continued ...**



**Overall Results for sample 7 : C36 Lib re-do**

Number of peaks found: 9                      Corr. Area 1: 1,004.8  
 Noise: 0.1

**Peak table for sample 7 : C36 Lib re-do**

Peak	Size [bp]	Conc. [pg/μl]	Molarity [pmol/l]	Observations
1	35	125.00	5,411.3	Lower Marker
2	285	37.06	197.3	
3	323	163.27	766.3	
4	358	341.51	1,444.7	
5	374	185.23	750.3	
6	411	348.32	1,285.2	
7	426	163.06	579.8	
8	442	202.32	694.3	
9	464	315.47	1,030.7	
10	495	708.45	2,170.0	
11	10,380	75.00	10.9	Upper Marker

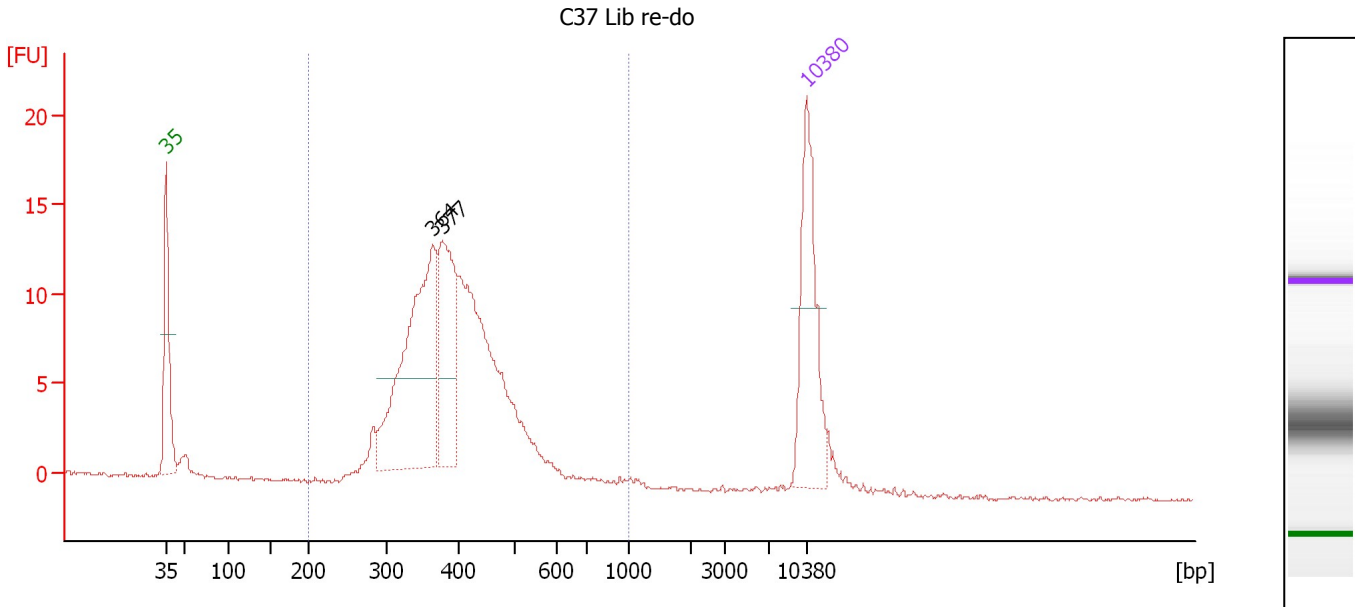
**Region table for sample 7 : C36 Lib re-do**

From [bp]	Molarity [pmol/l]	Average Size [bp]	Conc. [pg/μl]	To [bp]	Corr. Area	% of Total	Size distribution in CV [%]	Color
200	9,683.7	450	2,712.31	1,000	1,004.8	98	21.6	Blue

Assay Class: High Sensitivity DNA Assay  
 Data Path: C:\...ents and Settings\Bioanalyzer\2012-03-07\2012-03-07\_002.xad

Created: 3/7/2012 1:00:07 PM  
 Modified: 3/7/2012 1:41:28 PM

**Electropherogram Summary Continued ...**



**Overall Results for sample 8 : C37 Lib re-do**

Number of peaks found: 2                      Corr. Area 1: 183.7  
 Noise: 0.1

**Peak table for sample 8 : C37 Lib re-do**

Peak	Size [bp]	Conc. [pg/μl]	Molarity [pmol/l]	Observations
1	35	125.00	5,411.3	Lower Marker
2	364	194.12	808.7	
3	377	97.67	392.8	
4	10,380	75.00	10.9	Upper Marker

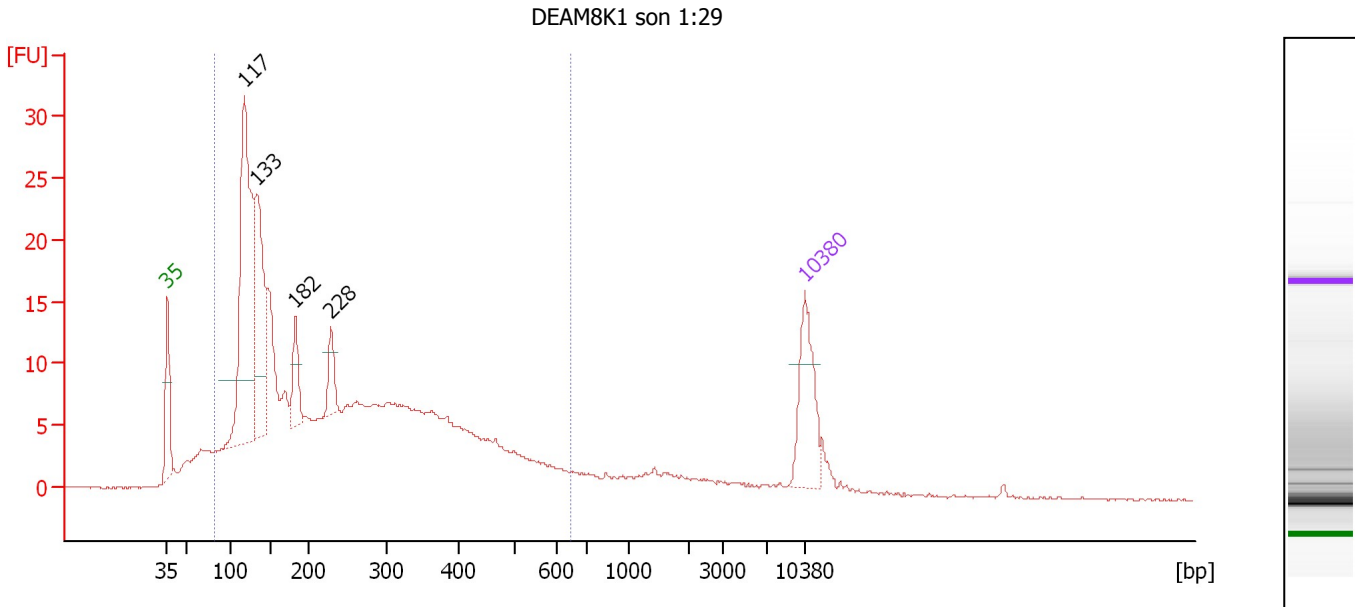
**Region table for sample 8 : C37 Lib re-do**

From [bp]	Molarity [pmol/l]	Average Size [bp]	Conc. [pg/μl]	To [bp]	Corr. Area	% of Total	Size distribution in CV [%]	Color
200	2,291.9	400	580.93	1,000	183.7	97	19.4	Blue

Assay Class: High Sensitivity DNA Assay  
 Data Path: C:\...ents and Settings\Bioanalyzer\2012-03-07\2012-03-07\_002.xad

Created: 3/7/2012 1:00:07 PM  
 Modified: 3/7/2012 1:41:28 PM

**Electropherogram Summary Continued ...**



**Overall Results for sample 9 : DEAM8K1 son 1:29**

Number of peaks found: 4                      Corr. Area 1: 416.9  
 Noise: 0.1

**Peak table for sample 9 : DEAM8K1 son 1:29**

Peak	Size [bp]	Conc. [pg/μl]	Molarity [pmol/l]	Observations
1	35	125.00	5,411.3	Lower Marker
2	117	419.00	5,405.8	
3	133	217.91	2,475.9	
4	182	56.26	468.0	
5	228	40.27	267.1	
6	10,380	75.00	10.9	Upper Marker

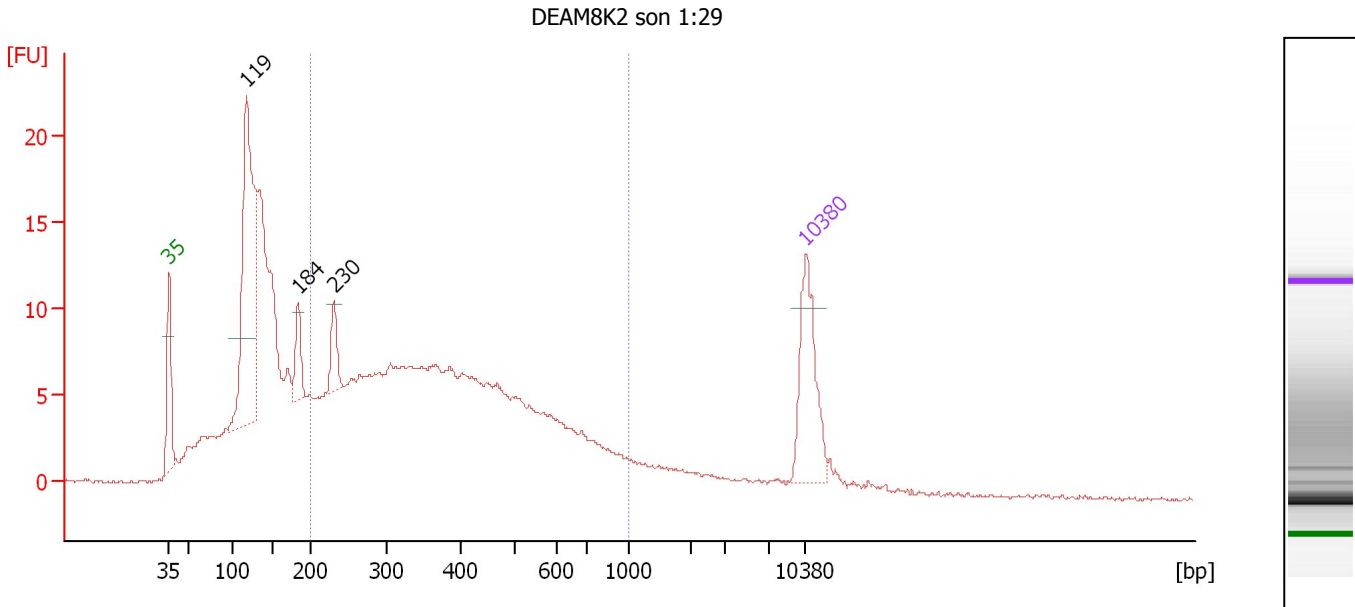
**Region table for sample 9 : DEAM8K1 son 1:29**

From [bp]	Molarity [pmol/l]	Average Size [bp]	Conc. [pg/μl]	To [bp]	Corr. Area	% of Total	Size distribution in CV [%]	Color
83	19,213.2	252	2,234.83	647	416.9	87	51.5	Blue

Assay Class: High Sensitivity DNA Assay  
 Data Path: C:\...ents and Settings\Bioanalyzer\2012-03-07\2012-03-07\_002.xad

Created: 3/7/2012 1:00:07 PM  
 Modified: 3/7/2012 1:41:28 PM

**Electropherogram Summary Continued ...**



**Overall Results for sample 10 : DEAM8K2 son 1:29**

Number of peaks found: 3                      Corr. Area 1: 240.5  
 Noise: 0.1

**Peak table for sample 10 : DEAM8K2 son 1:29**

Peak	Size [bp]	Conc. [pg/μl]	Molarity [pmol/l]	Observations
1	35	125.00	5,411.3	Lower Marker
2	119	324.72	4,136.9	
3	184	37.50	309.2	
4	230	33.75	222.2	
5	10,380	75.00	10.9	Upper Marker

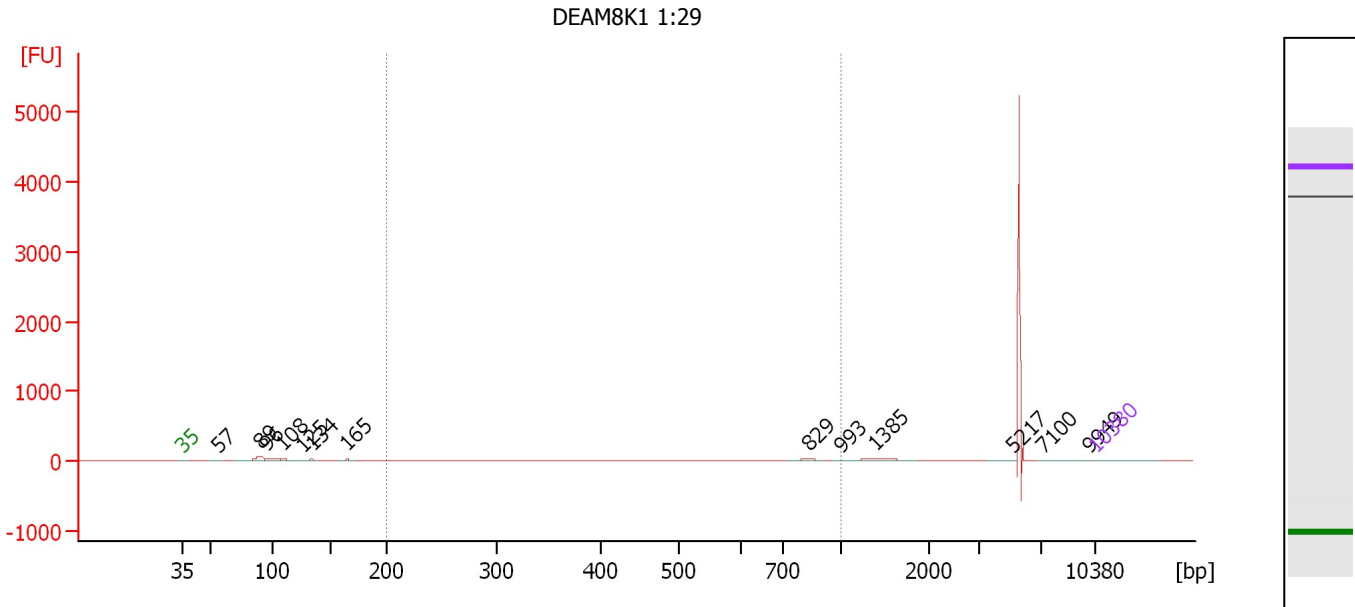
**Region table for sample 10 : DEAM8K2 son 1:29**

From [bp]	Molarity [pmol/l]	Average Size [bp]	Conc. [pg/μl]	To [bp]	Corr. Area	% of Total	Size distribution in CV [%]	Color
200	5,515.2	408	1,233.49	1,000	240.5	54	39.2	Blue

Assay Class: High Sensitivity DNA Assay  
 Data Path: C:\...ents and Settings\Bioanalyzer\2012-03-07\2012-03-07\_002.xad

Created: 3/7/2012 1:00:07 PM  
 Modified: 3/7/2012 1:41:28 PM

**Electropherogram Summary Continued ...**



**Overall Results for sample 11 : DEAM8K1 1:29**

Number of peaks found: 13      Corr. Area 1: 448.2  
 Noise: 0.1

**Peak table for sample 11 : DEAM8K1 1:29**

Peak	Size [bp]	Conc. [pg/μl]	Molarity [pmol/l]	Observations
1	35	125.00	5,411.3	Lower Marker
2	57	45.20	1,203.5	
3	89	563.05	9,542.3	
4	96	458.16	7,257.4	
5	108	211.62	2,955.3	
6	125	62.73	757.8	
7	134	123.33	1,397.9	
8	165	91.51	841.2	
9	829	60.91	111.3	
10	993	11.43	17.4	
11	1,385	184.07	201.3	
12	5,217	13.52	3.9	
13	7,100	8.06	1.7	
14	9,949	73.26	11.2	
15	10,380	75.00	10.9	Upper Marker

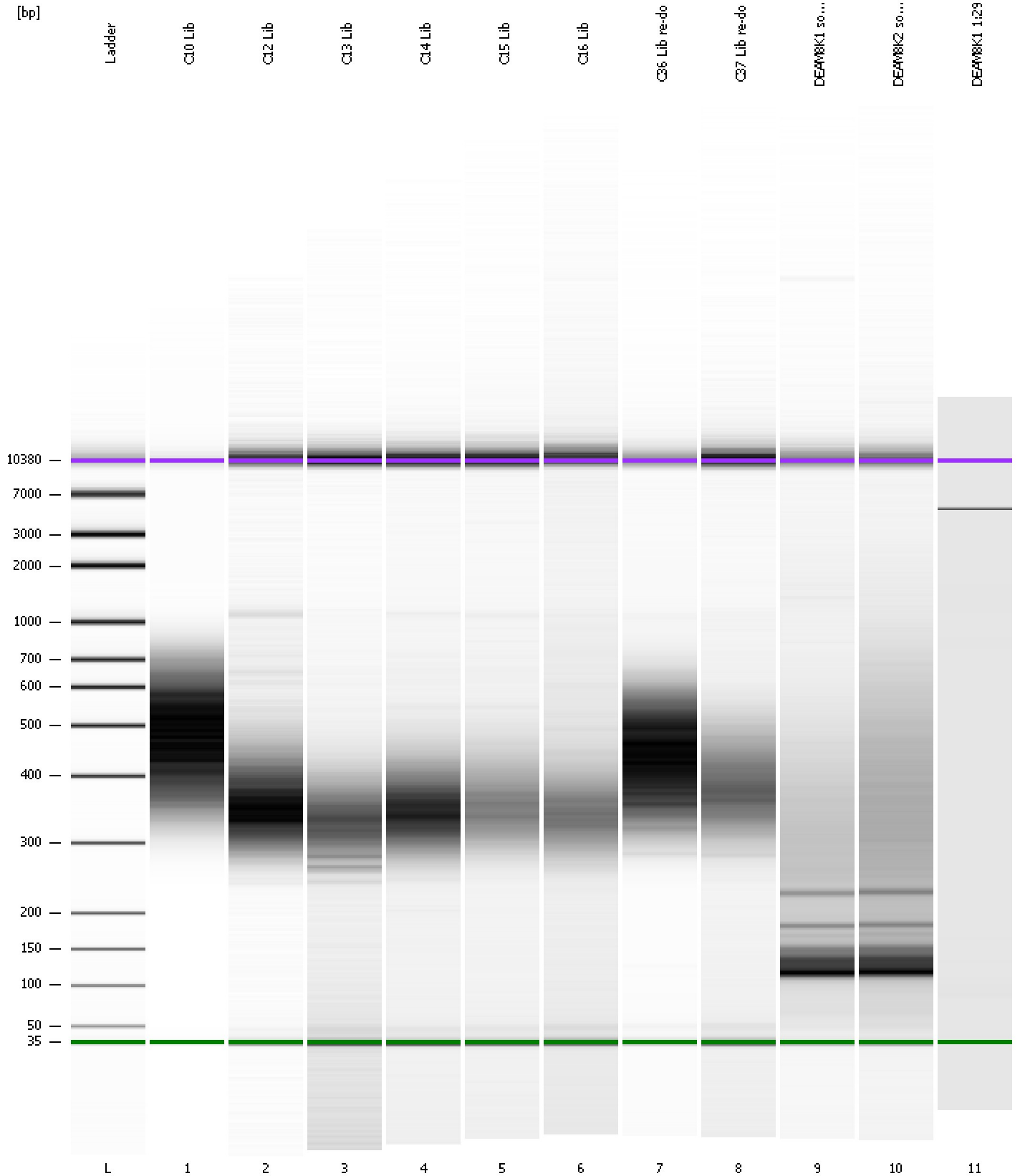
**Region table for sample 11 : DEAM8K1 1:29**

From [bp]	Molarity [pmol/l]	Average Size [bp]	Conc. [pg/μl]	To [bp]	Corr. Area	% of Total	Size distribution in CV [%]	Color
200	3,703.7	580	1,109.30	1,000	448.2	20	36.5	Blue

Assay Class: High Sensitivity DNA Assay  
Data Path: C:\...ents and Settings\Bioanalyzer\2012-03-07\2012-03-07\_002.xad

Created: 3/7/2012 1:00:07 PM  
Modified: 3/7/2012 1:41:28 PM

**Gel Image**





Assay Class: High Sensitivity DNA Assay Created: 3/7/2012 1:00:07 PM  
 Data Path: C:\...ents and Settings\Bioanalyzer\2012-03-07\2012-03-07\_002.xad Modified: 3/7/2012 1:41:28 PM

**Run Logbook**

Description	Number	Source	Category	Sub Category	Time	Time Zone	User	Host
Run ended on port 1 (Number of wells acquired: 12)		Instrument	Run		3/7/2012 1:41:25 PM	(GMT --08:00) Pacific Standard Time	UC Davis	D8XSMGH1
Run started on port 1 (File: C:\Documents and Settings\Bioanalyzer\2012-03-07\2012-03-07_002.xad)		Instrument	Run		3/7/2012 1:00:13 PM	(GMT --08:00) Pacific Standard Time	UC Davis	D8XSMGH1
Product Number : G2938B		Instrument	Run		3/7/2012 1:00:13 PM	(GMT --08:00) Pacific Standard Time	UC Davis	D8XSMGH1
Name :		Instrument	Run		3/7/2012 1:00:13 PM	(GMT --08:00) Pacific Standard Time	UC Davis	D8XSMGH1
Vendor : Agilent Technologies		Instrument	Run		3/7/2012 1:00:13 PM	(GMT --08:00) Pacific Standard Time	UC Davis	D8XSMGH1
Serial# : DE13701086		Instrument	Run		3/7/2012 1:00:13 PM	(GMT --08:00) Pacific Standard Time	UC Davis	D8XSMGH1
Firmware : C.01.069		Instrument	Run		3/7/2012 1:00:13 PM	(GMT --08:00) Pacific Standard Time	UC Davis	D8XSMGH1
Cartridge : Electrode		Instrument	Run		3/7/2012 1:00:13 PM	(GMT --08:00) Pacific Standard Time	UC Davis	D8XSMGH1