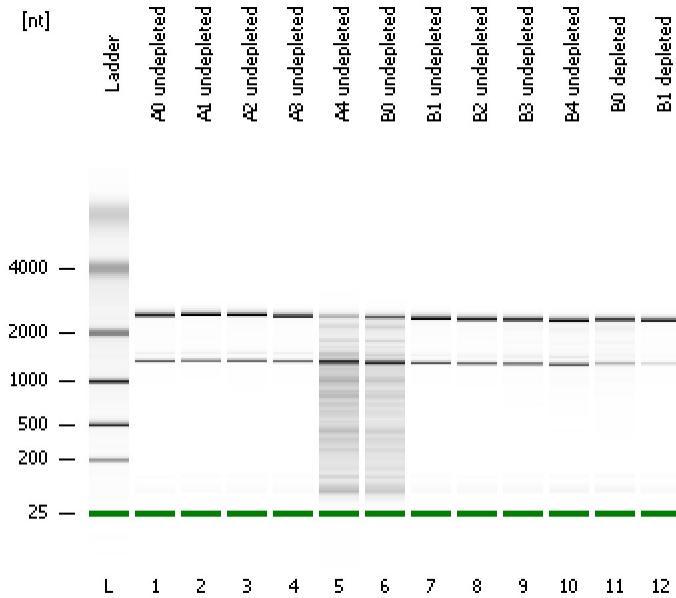


Assay Class: Prokaryote Total RNA Nano
 Data Path: C:\...tings\Bioanalyzer\2012-03-08\2012-03-08_005_ErinLynchHS.xad

Created: 3/8/2012 12:00:13 PM
 Modified: 3/8/2012 12:37:02 PM

Electrophoresis File Run Summary



Instrument Information:

Instrument Name: DE13701086 Firmware: C.01.069
 Serial#: DE13701086 Type: G2938B

Assay Information:

Assay Origin Path: C:\Program Files\Agilent\2100 bioanalyzer\2100 expert\assays\RNA\Prokaryote Total RNA Nano Series II.xsy

Assay Class: Prokaryote Total RNA Nano

Version: 2.5

Assay Comments: Total RNA Analysis ng sensitivity (Prokaryote)

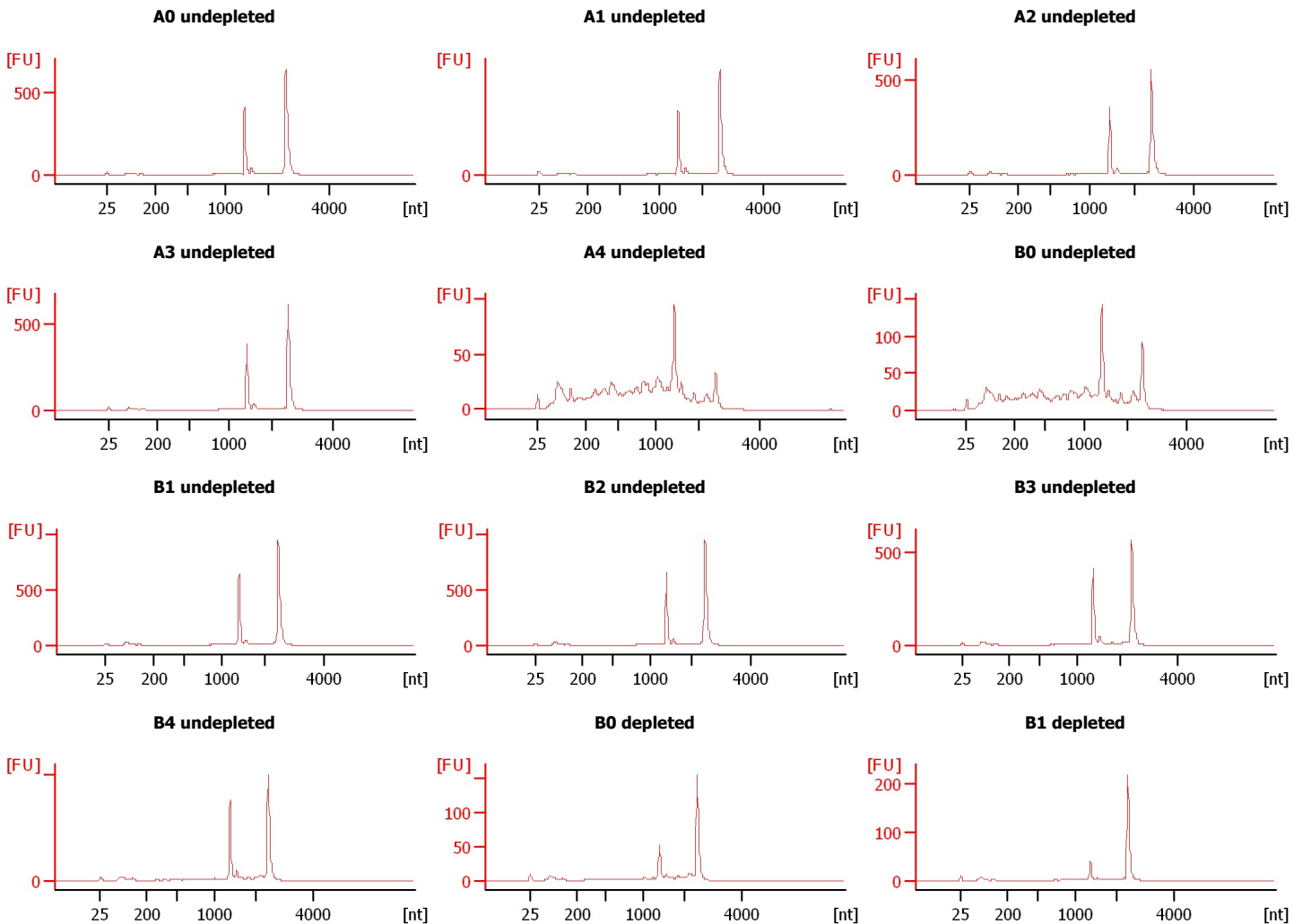
© Copyright 2003 - 2009 Agilent Technologies, Inc.

Chip Information:

Chip Lot #:

Reagent Kit Lot #:

Chip Comments:



Assay Class: Prokaryote Total RNA Nano
Data Path: C:\...tings\Bioanalyzer\2012-03-08\2012-03-08_005_ErinLynchHS.xad

Created: 3/8/2012 12:00:13 PM
Modified: 3/8/2012 12:37:02 PM

Electrophoresis File Run Summary (Chip Summary)

Sample Name	Sample Comment	Status	Result Label	Result Color
A0 undepleted		✓		
A1 undepleted		✓		
A2 undepleted		✓		
A3 undepleted		✓		
A4 undepleted		✓		
B0 undepleted		✓		
B1 undepleted		✓		
B2 undepleted		✓		
B3 undepleted		✓		
B4 undepleted		✓		
B0 depleted		✓		
B1 depleted		✓		
Ladder		✓		

Chip Lot #**Reagent Kit Lot #****Chip Comments :**

Assay Class: Prokaryote Total RNA Nano
Data Path: C:\...tings\Bioanalyzer\2012-03-08\2012-03-08_005_ErinLynchHS.xad

Created: 3/8/2012 12:00:13 PM
Modified: 3/8/2012 12:37:02 PM

Electrophoresis Assay Details

General Analysis Settings

Number of Available Sample and Ladder Wells (Max.) : 13
Minimum Visible Range [s] : 17
Maximum Visible Range [s] : 70
Start Analysis Time Range [s] : 19
End Analysis Time Range [s] : 69
Ladder Concentration [ng/μl] : 150
Lower Marker Concentration [ng/μl] : 0
Upper Marker Concentration [ng/μl] : 0
Used Lower Marker for Quantitation
Standard Curve Fit is Logarithmic
Show Data Aligned to Lower Marker

Integrator Settings

Integration Start Time [s] : 19
Integration End Time [s] : 69
Slope Threshold : 0.6
Height Threshold [FU] : 0.5
Area Threshold : 0.2
Width Threshold [s] : 0.5
Baseline Plateau [s] : 6

Filter Settings

Filter Width [s] : 0.5
Polynomial Order : 4

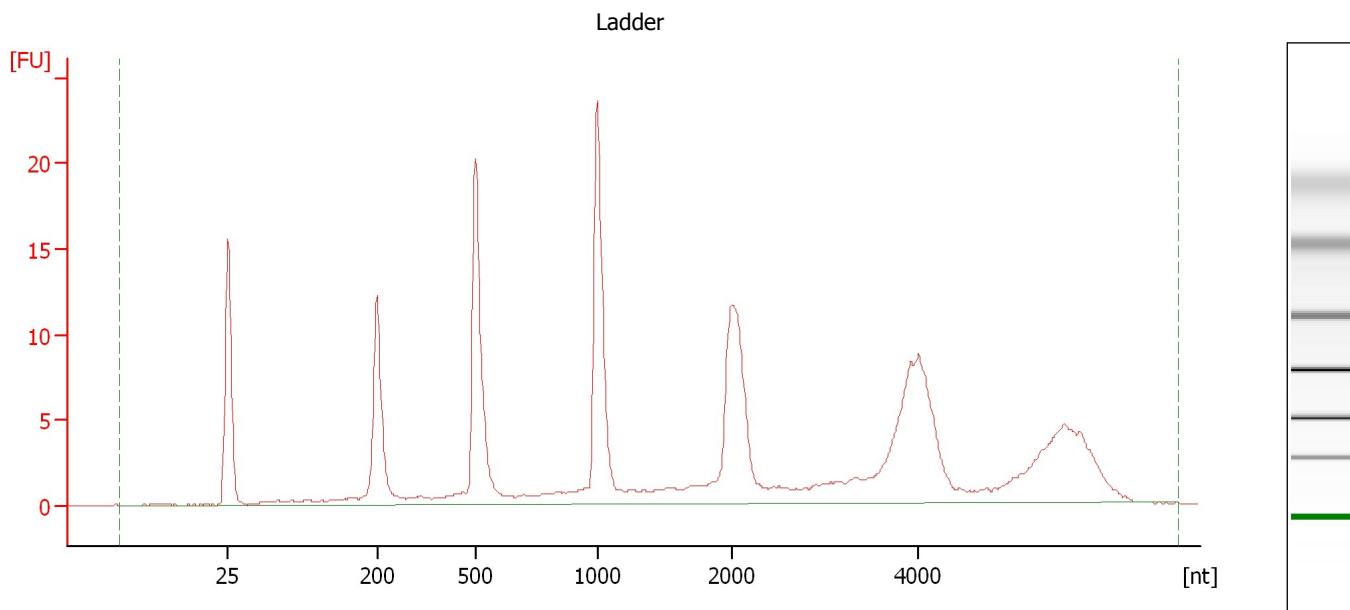
Ladder

Ladder Peak	Size
1	25
2	200
3	500
4	1000
5	2000
6	4000

Assay Class: Prokaryote Total RNA Nano
Data Path: C:\...tings\Bioanalyzer\2012-03-08\2012-03-08_005_ErinLynchHS.xad

Created: 3/8/2012 12:00:13 PM
Modified: 3/8/2012 12:37:02 PM

Electropherogram Summary



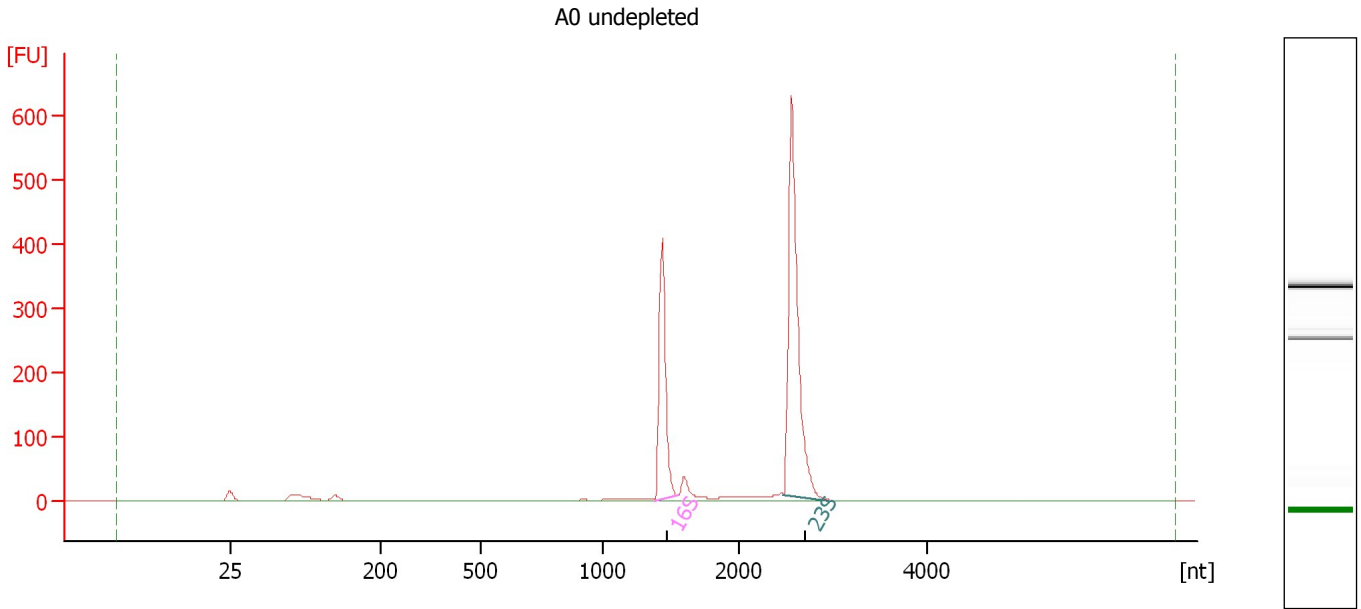
Overall Results for Ladder

RNA Area: 188.2 RNA Concentration: 150 ng/μl

Assay Class: Prokaryote Total RNA Nano
 Data Path: C:\...tings\Bioanalyzer\2012-03-08\2012-03-08_005_ErinLynchHS.xad

Created: 3/8/2012 12:00:13 PM
 Modified: 3/8/2012 12:37:02 PM

Electropherogram Summary Continued ...



Overall Results for sample 1 : A0 undepleted

RNA Area: 1,146.8 RNA Integrity Number (RIN): 10 (B.02.08,
 RNA Concentration: 914 ng/μl Anomaly Threshold(s)
 rRNA Ratio [23s / 16s]: 2.0 manually adapted)

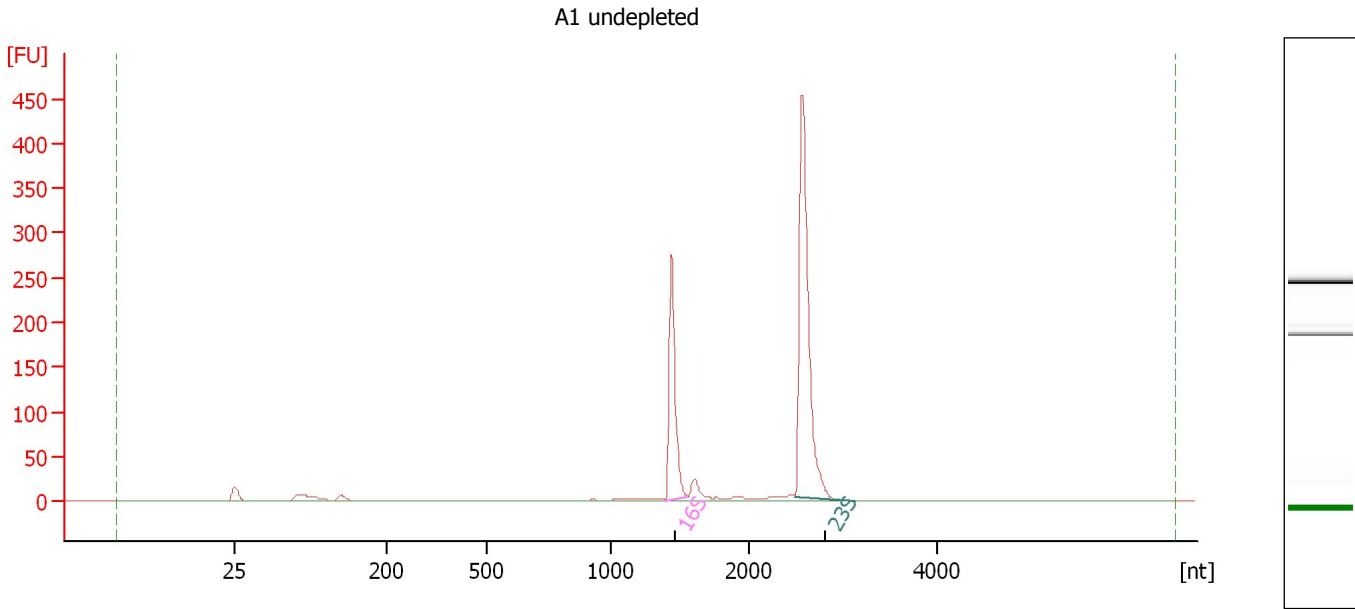
Fragment table for sample 1 : A0 undepleted

Name	Start Size [nt]	End Size [nt]	Area	% of total Area
16S	1,380	1,545	297.0	25.9
23S	2,468	2,957	605.5	52.8

Assay Class: Prokaryote Total RNA Nano
 Data Path: C:\...tings\Bioanalyzer\2012-03-08\2012-03-08_005_ErinLynchHS.xad

Created: 3/8/2012 12:00:13 PM
 Modified: 3/8/2012 12:37:02 PM

Electropherogram Summary Continued ...



Overall Results for sample 2 : A1 undepleted

RNA Area: 767.3 RNA Integrity Number (RIN): 10 (B.02.08,
 RNA Concentration: 612 ng/μl Anomaly Threshold(s)
 rRNA Ratio [23s / 16s]: 2.1 manually adapted)

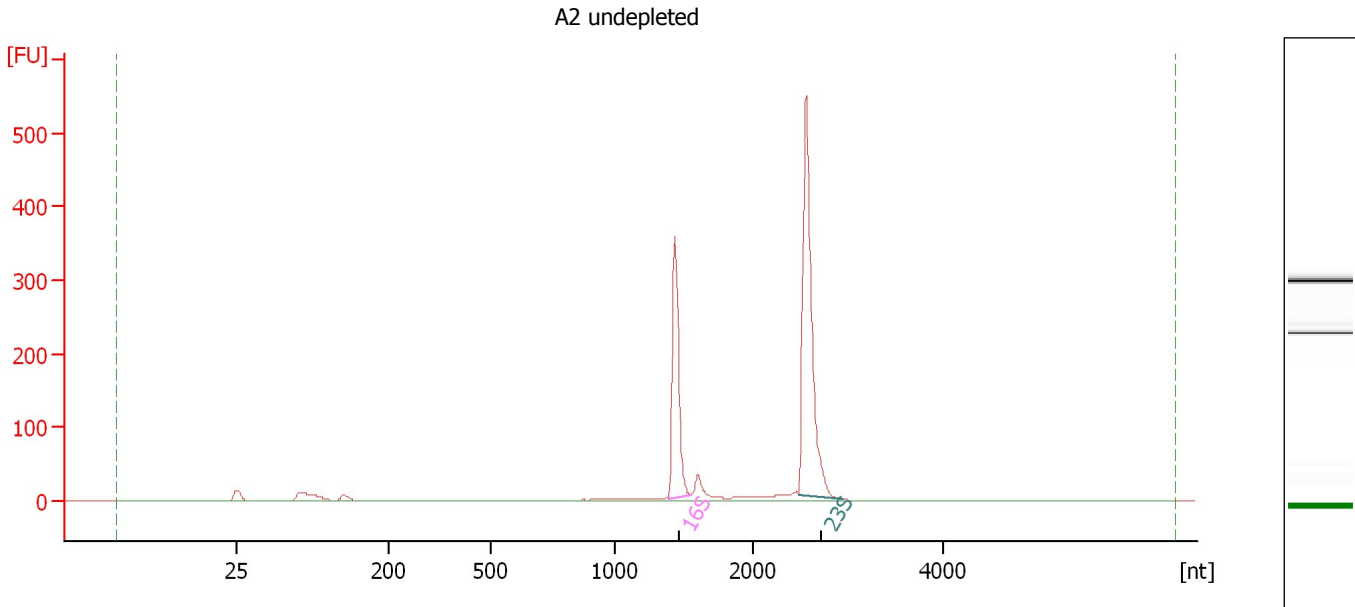
Fragment table for sample 2 : A1 undepleted

Name	Start Size [nt]	End Size [nt]	Area	% of total Area
16S	1,394	1,558	196.8	25.6
23S	2,500	3,121	413.8	53.9

Assay Class: Prokaryote Total RNA Nano
 Data Path: C:\...tings\Bioanalyzer\2012-03-08\2012-03-08_005_ErinLynchHS.xad

Created: 3/8/2012 12:00:13 PM
 Modified: 3/8/2012 12:37:02 PM

Electropherogram Summary Continued ...



Overall Results for sample 3 : A2 undepleted

RNA Area: 977.3 RNA Integrity Number (RIN): 10 (B.02.08,
 RNA Concentration: 779 ng/μl Anomaly Threshold(s)
 rRNA Ratio [23s / 16s]: 1.9 manually adapted)

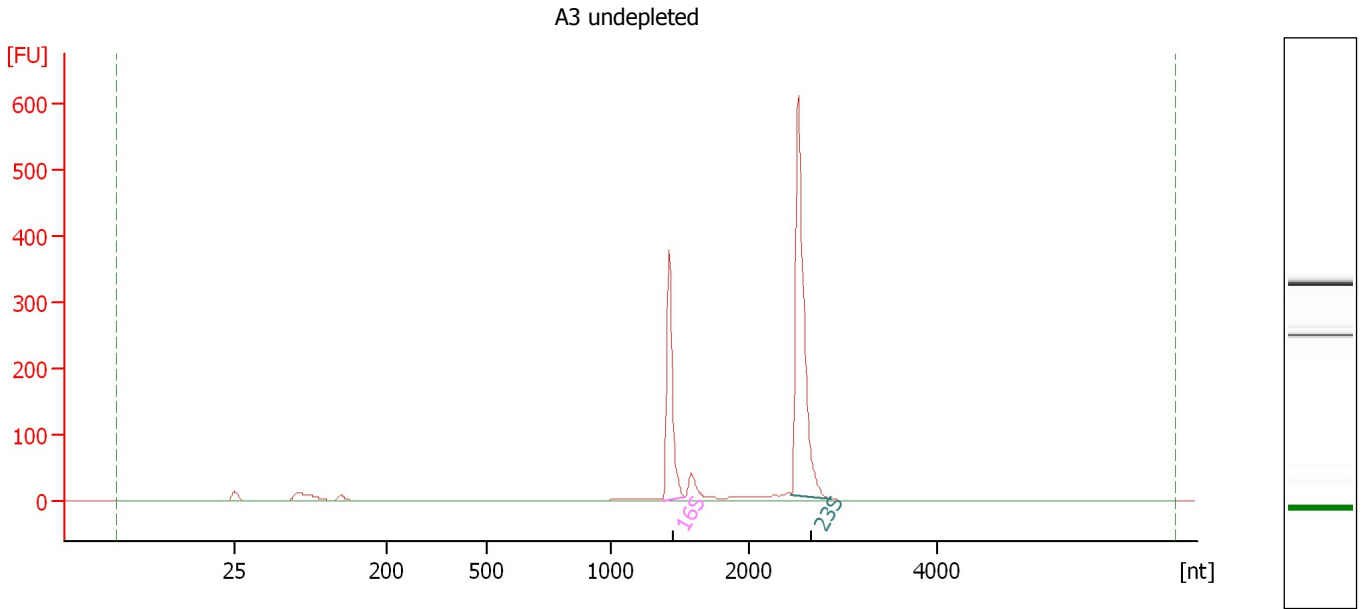
Fragment table for sample 3 : A2 undepleted

Name	Start Size [nt]	End Size [nt]	Area	% of total Area
16S	1,390	1,553	254.3	26.0
23S	2,488	2,949	488.8	50.0

Assay Class: Prokaryote Total RNA Nano
 Data Path: C:\...tings\Bioanalyzer\2012-03-08\2012-03-08_005_ErinLynchHS.xad

Created: 3/8/2012 12:00:13 PM
 Modified: 3/8/2012 12:37:02 PM

Electropherogram Summary Continued ...



Overall Results for sample 4 : A3 undepleted

RNA Area: 1,030.5 RNA Integrity Number (RIN): 10 (B.02.08,
 RNA Concentration: 821 ng/μl Anomaly Threshold(s)
 rRNA Ratio [23s / 16s]: 2.0 manually adapted)

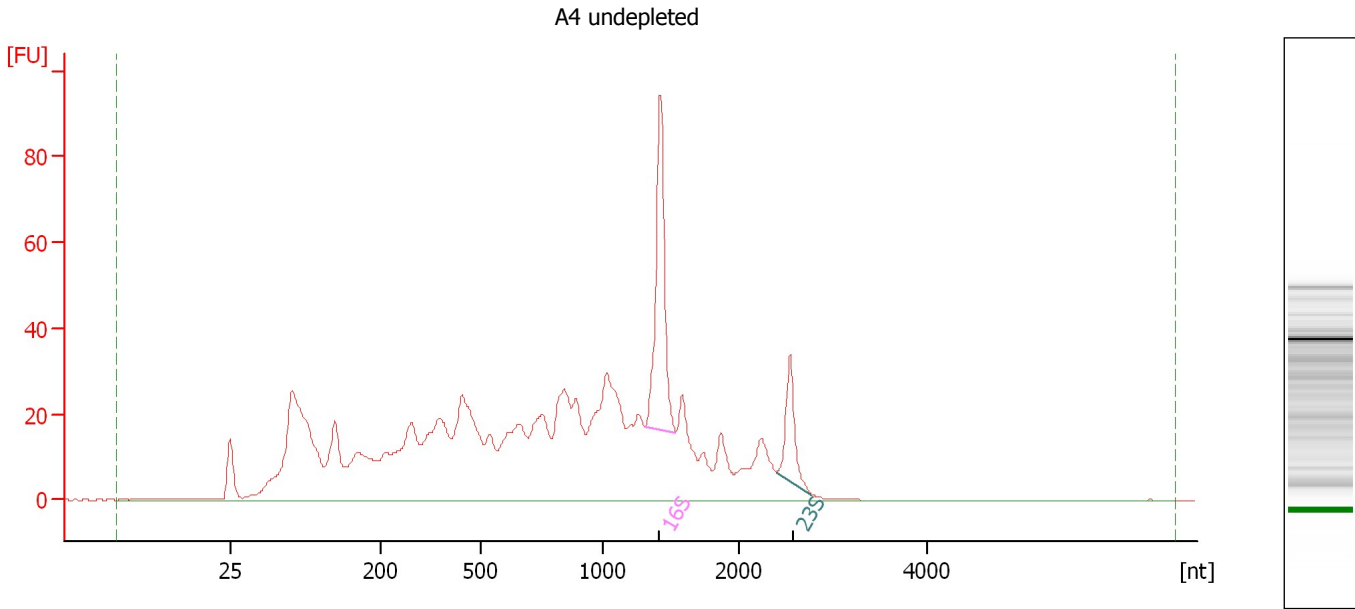
Fragment table for sample 4 : A3 undepleted

Name	Start Size [nt]	End Size [nt]	Area	% of total Area
16S	1,379	1,535	267.0	25.9
23S	2,455	2,884	523.3	50.8

Assay Class: Prokaryote Total RNA Nano
 Data Path: C:\...tings\Bioanalyzer\2012-03-08\2012-03-08_005_ErinLynchHS.xad

Created: 3/8/2012 12:00:13 PM
 Modified: 3/8/2012 12:37:02 PM

Electropherogram Summary Continued ...



Overall Results for sample 5 : A4 undepleted

RNA Area: 1,084.5 RNA Integrity Number (RIN): 4.9 (B.02.08,
 RNA Concentration: 864 ng/μl Anomaly Threshold(s)
 rRNA Ratio [23s / 16s]: 0.3 manually adapted)

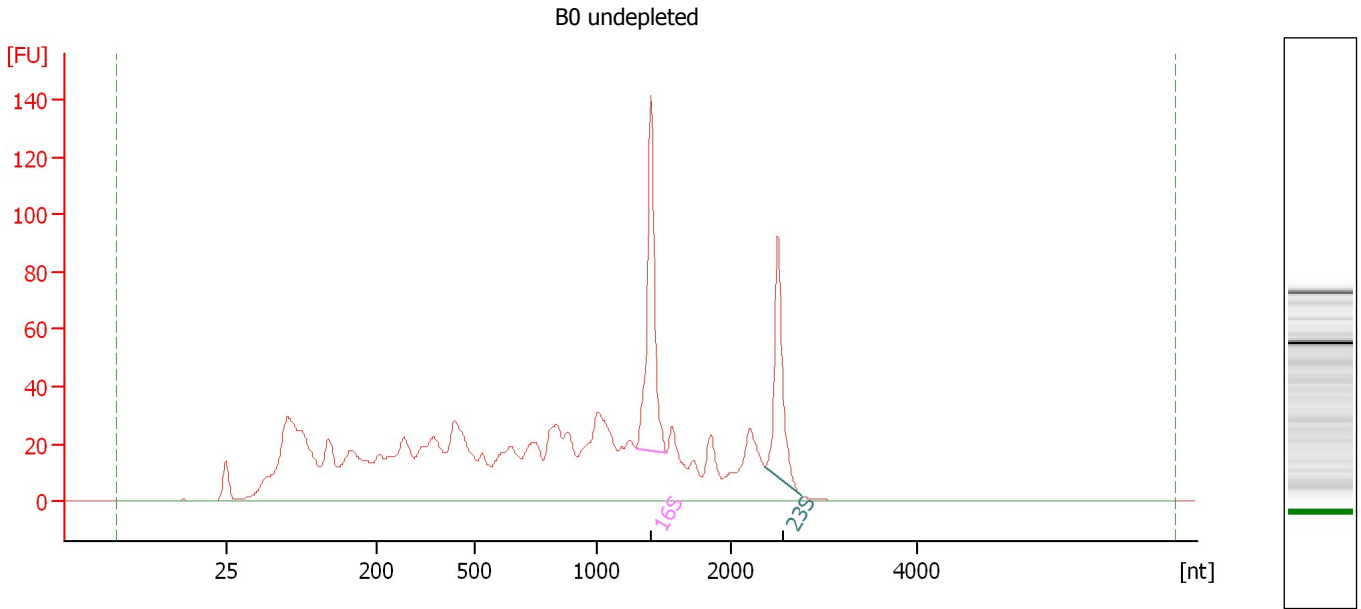
Fragment table for sample 5 : A4 undepleted

Name	Start Size [nt]	End Size [nt]	Area	% of total Area
16S	1,302	1,530	77.3	7.1
23S	2,389	2,764	25.8	2.4

Assay Class: Prokaryote Total RNA Nano
 Data Path: C:\...tings\Bioanalyzer\2012-03-08\2012-03-08_005_ErinLynchHS.xad

Created: 3/8/2012 12:00:13 PM
 Modified: 3/8/2012 12:37:02 PM

Electropherogram Summary Continued ...



Overall Results for sample 6 : B0 undepleted

RNA Area: 1,361.3 RNA Integrity Number (RIN): 5.6 (B.02.08,
 RNA Concentration: 1,085 ng/μl Anomaly Threshold(s)
 rRNA Ratio [23s / 16s]: 0.6 manually adapted)

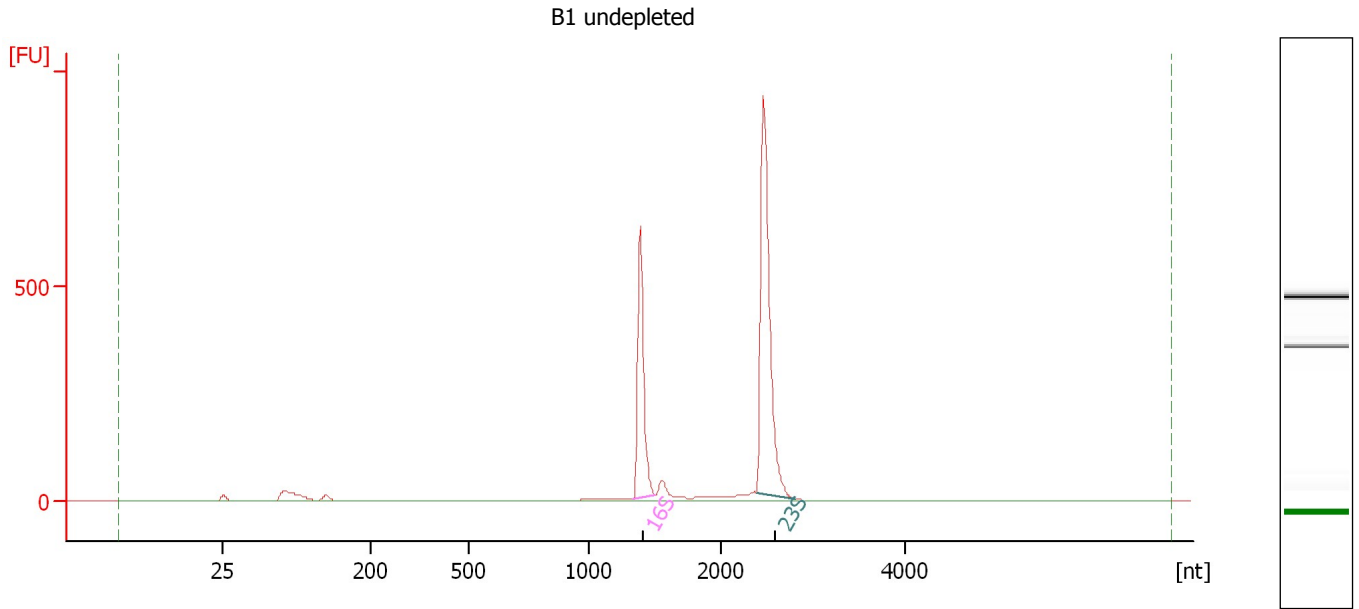
Fragment table for sample 6 : B0 undepleted

Name	Start Size [nt]	End Size [nt]	Area	% of total Area
16S	1,295	1,517	115.1	8.5
23S	2,356	2,757	74.3	5.5

Assay Class: Prokaryote Total RNA Nano
 Data Path: C:\...tings\Bioanalyzer\2012-03-08\2012-03-08_005_ErinLynchHS.xad

Created: 3/8/2012 12:00:13 PM
 Modified: 3/8/2012 12:37:02 PM

Electropherogram Summary Continued ...



Overall Results for sample 7 : B1 undepleted

RNA Area: 1,755.9 RNA Integrity Number (RIN): 10 (B.02.08,
 RNA Concentration: 1,399 ng/μl Anomaly Threshold(s)
 rRNA Ratio [23s / 16s]: 1.8 manually adapted)

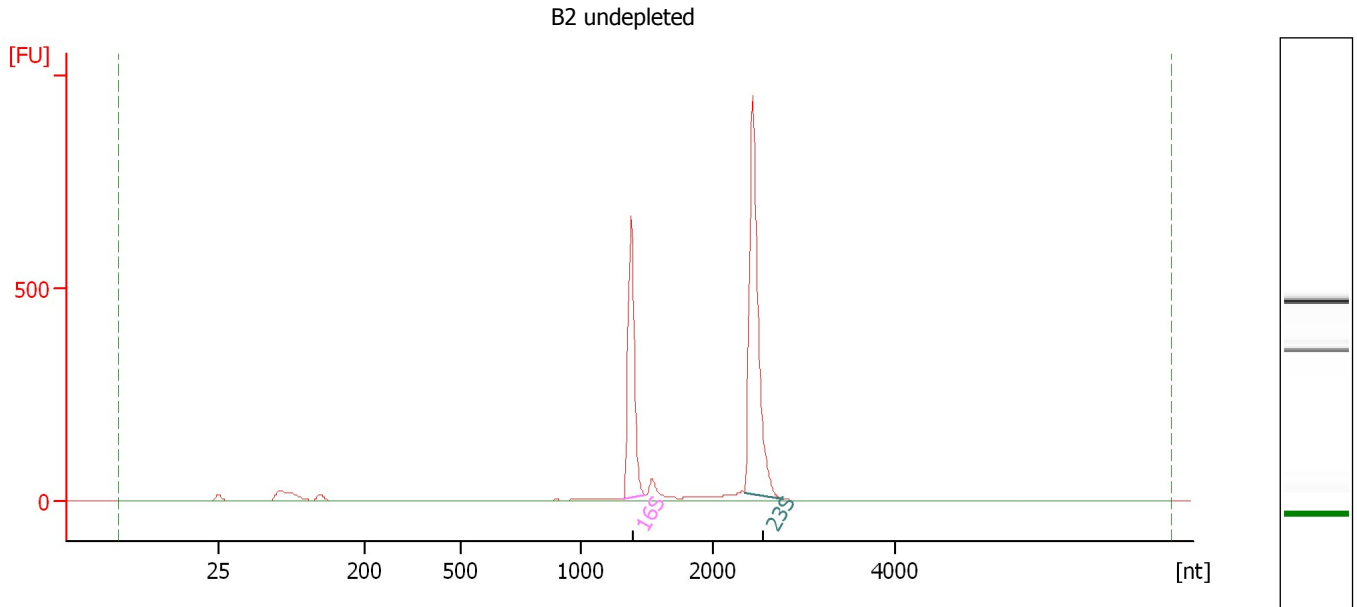
Fragment table for sample 7 : B1 undepleted

Name	Start Size [nt]	End Size [nt]	Area	% of total Area
16S	1,336	1,503	479.5	27.3
23S	2,380	2,808	862.2	49.1

Assay Class: Prokaryote Total RNA Nano
 Data Path: C:\...tings\Bioanalyzer\2012-03-08\2012-03-08_005_ErinLynchHS.xad

Created: 3/8/2012 12:00:13 PM
 Modified: 3/8/2012 12:37:02 PM

Electropherogram Summary Continued ...



Overall Results for sample 8 : B2 undepleted

RNA Area: 1,820.1 RNA Integrity Number (RIN): 10 (B.02.08,
 RNA Concentration: 1,451 ng/μl Anomaly Threshold(s)
 rRNA Ratio [23s / 16s]: 1.8 manually adapted)

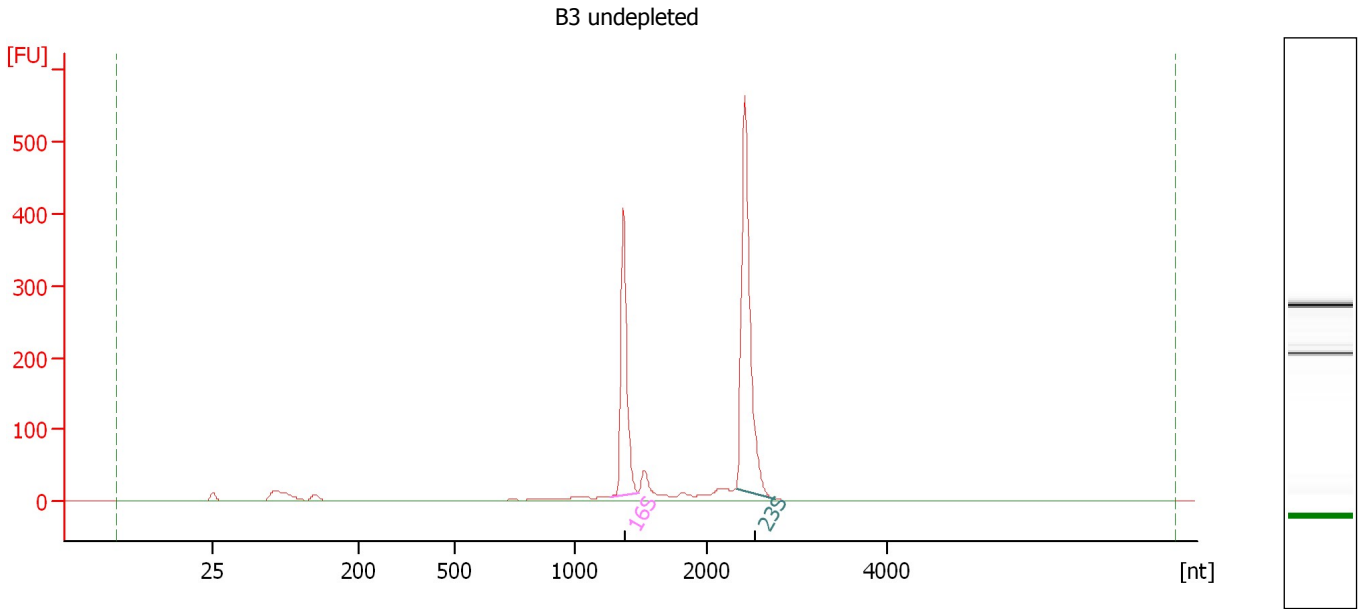
Fragment table for sample 8 : B2 undepleted

Name	Start Size [nt]	End Size [nt]	Area	% of total Area
16S	1,321	1,490	504.2	27.7
23S	2,346	2,766	883.9	48.6

Assay Class: Prokaryote Total RNA Nano
 Data Path: C:\...tings\Bioanalyzer\2012-03-08\2012-03-08_005_ErinLynchHS.xad

Created: 3/8/2012 12:00:13 PM
 Modified: 3/8/2012 12:37:02 PM

Electropherogram Summary Continued ...



Overall Results for sample 9 : B3 undepleted

RNA Area: 1,146.3 RNA Integrity Number (RIN): 10 (B.02.08,
 RNA Concentration: 914 ng/μl Anomaly Threshold(s)
 rRNA Ratio [23s / 16s]: 1.7 manually adapted)

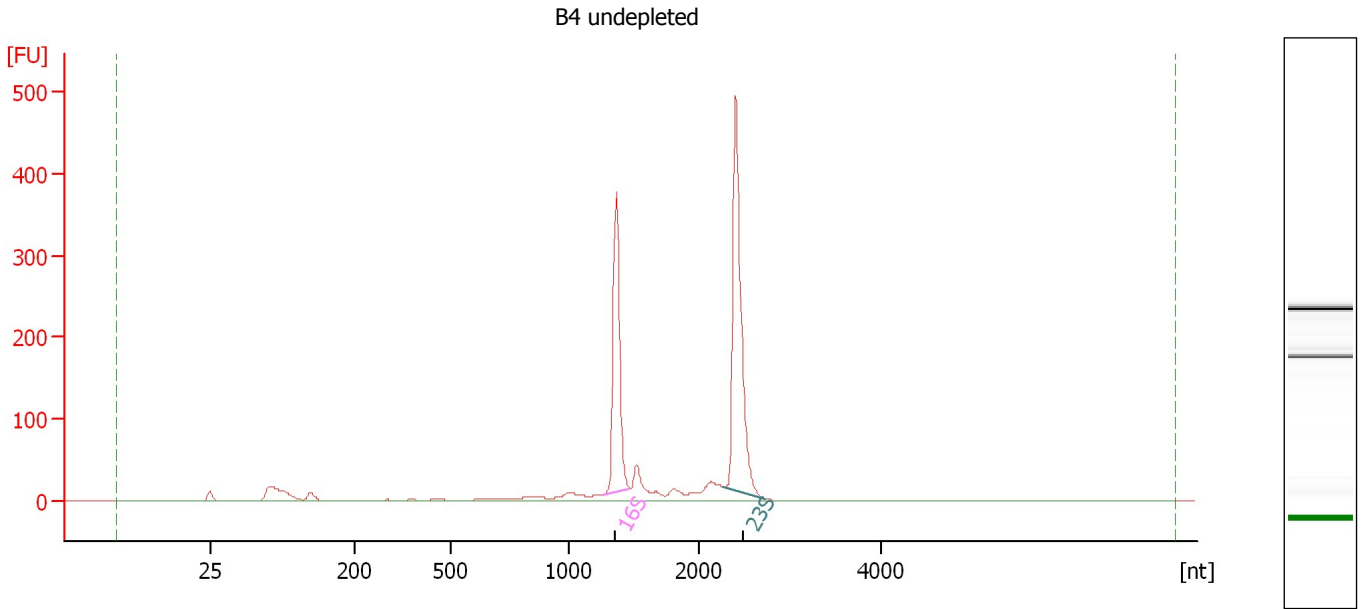
Fragment table for sample 9 : B3 undepleted

Name	Start Size [nt]	End Size [nt]	Area	% of total Area
16S	1,282	1,485	304.5	26.6
23S	2,335	2,747	513.7	44.8

Assay Class: Prokaryote Total RNA Nano
 Data Path: C:\...tings\Bioanalyzer\2012-03-08\2012-03-08_005_ErinLynchHS.xad

Created: 3/8/2012 12:00:13 PM
 Modified: 3/8/2012 12:37:02 PM

Electropherogram Summary Continued ...



Overall Results for sample 10 : B4 undepleted

RNA Area: 1,135.5 RNA Integrity Number (RIN): 9.9 (B.02.08,
 RNA Concentration: 905 ng/μl Anomaly Threshold(s)
 rRNA Ratio [23s / 16s]: 1.5 manually adapted)

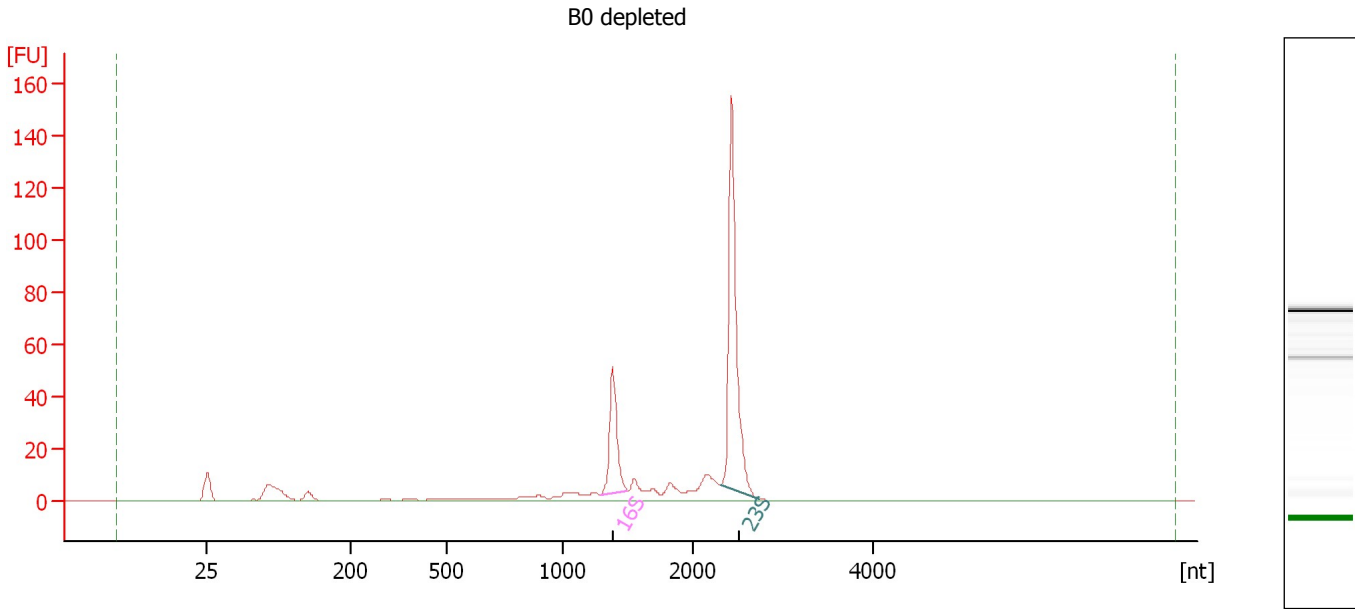
Fragment table for sample 10 : B4 undepleted

Name	Start Size [nt]	End Size [nt]	Area	% of total Area
16S	1,260	1,464	288.4	25.4
23S	2,265	2,727	441.5	38.9

Assay Class: Prokaryote Total RNA Nano
 Data Path: C:\...tings\Bioanalyzer\2012-03-08\2012-03-08_005_ErinLynchHS.xad

Created: 3/8/2012 12:00:13 PM
 Modified: 3/8/2012 12:37:02 PM

Electropherogram Summary Continued ...



Overall Results for sample 11 : B0 depleted

RNA Area: 308.4 RNA Integrity Number (RIN): 8.7 (B.02.08,
 RNA Concentration: 246 ng/μl Anomaly Threshold(s)
 rRNA Ratio [23s / 16s]: 3.0 manually adapted)

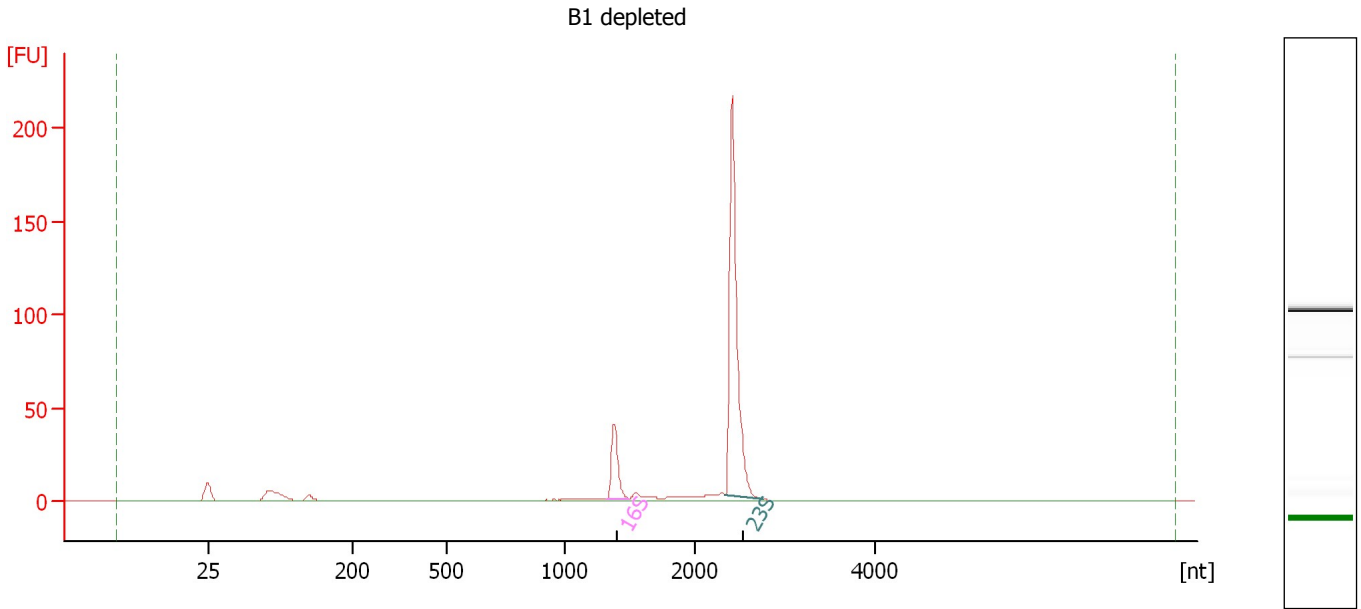
Fragment table for sample 11 : B0 depleted

Name	Start Size [nt]	End Size [nt]	Area	% of total Area
16S	1,279	1,493	42.5	13.8
23S	2,301	2,730	129.1	41.9

Assay Class: Prokaryote Total RNA Nano
Data Path: C:\...tings\Bioanalyzer\2012-03-08\2012-03-08_005_ErinLynchHS.xad

Created: 3/8/2012 12:00:13 PM
Modified: 3/8/2012 12:37:02 PM

Electropherogram Summary Continued ...



Overall Results for sample 12 : B1 depleted

RNA Area: 280.8 RNA Integrity Number (RIN): 8.3 (B.02.08,
RNA Concentration: 224 ng/μl Anomaly Threshold(s)
rRNA Ratio [23s / 16s]: 5.9 manually adapted)

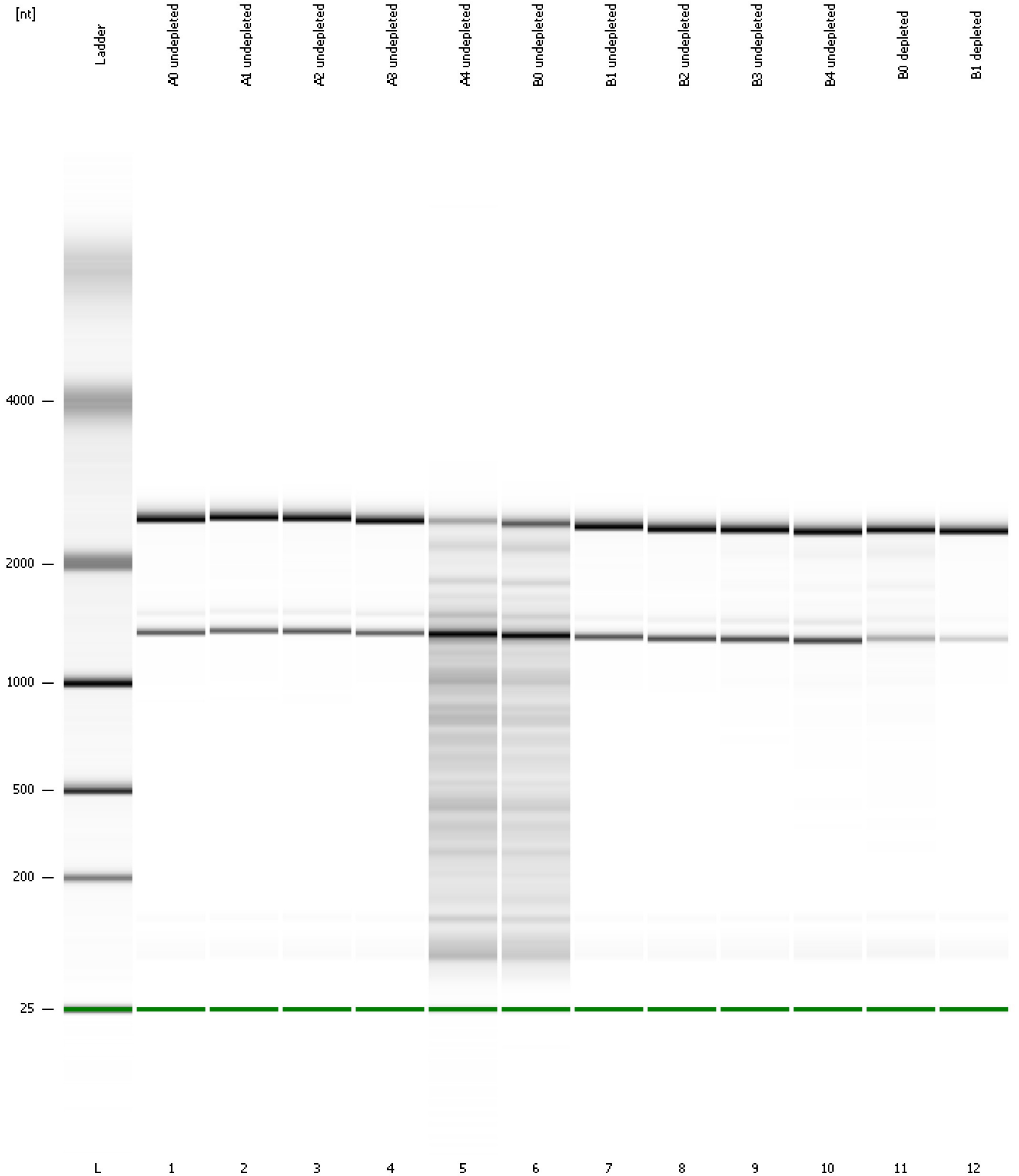
Fragment table for sample 12 : B1 depleted

Name	Start Size [nt]	End Size [nt]	Area	% of total Area
16S	1,322	1,486	30.5	10.8
23S	2,325	2,741	179.1	63.8

Assay Class: Prokaryote Total RNA Nano
Data Path: C:\...tings\Bioanalyzer\2012-03-08\2012-03-08_005_ErinLynchHS.xad

Created: 3/8/2012 12:00:13 PM
Modified: 3/8/2012 12:37:02 PM

Gel Image



Assay Class: Prokaryote Total RNA Nano Created: 3/8/2012 12:00:13 PM
 Data Path: C:\...tings\Bioanalyzer\2012-03-08\2012-03-08_005_ErinLynchHS.xad Modified: 3/8/2012 12:37:02 PM

Run Logbook

Description	Number	Source	Category	Sub Category	Time	Time Zone	User	Host
Run ended on port 1 (Number of wells acquired: 13)		Instrument	Run		3/8/2012 12:24:01 PM	(GMT --08:00) Pacific Standard Time	UC Davis	D8XSMGH1
Run started on port 1 (File: C:\Documents and Settings\Bioanalyzer\2012-03-08\2012-03-08_005.xad)		Instrument	Run		3/8/2012 12:00:18 PM	(GMT --08:00) Pacific Standard Time	UC Davis	D8XSMGH1
Product Number : G2938B		Instrument	Run		3/8/2012 12:00:18 PM	(GMT --08:00) Pacific Standard Time	UC Davis	D8XSMGH1
Name :		Instrument	Run		3/8/2012 12:00:18 PM	(GMT --08:00) Pacific Standard Time	UC Davis	D8XSMGH1
Vendor : Agilent Technologies		Instrument	Run		3/8/2012 12:00:18 PM	(GMT --08:00) Pacific Standard Time	UC Davis	D8XSMGH1
Serial# : DE13701086		Instrument	Run		3/8/2012 12:00:18 PM	(GMT --08:00) Pacific Standard Time	UC Davis	D8XSMGH1
Firmware : C.01.069		Instrument	Run		3/8/2012 12:00:18 PM	(GMT --08:00) Pacific Standard Time	UC Davis	D8XSMGH1
Cartridge : Electrode		Instrument	Run		3/8/2012 12:00:18 PM	(GMT --08:00) Pacific Standard Time	UC Davis	D8XSMGH1