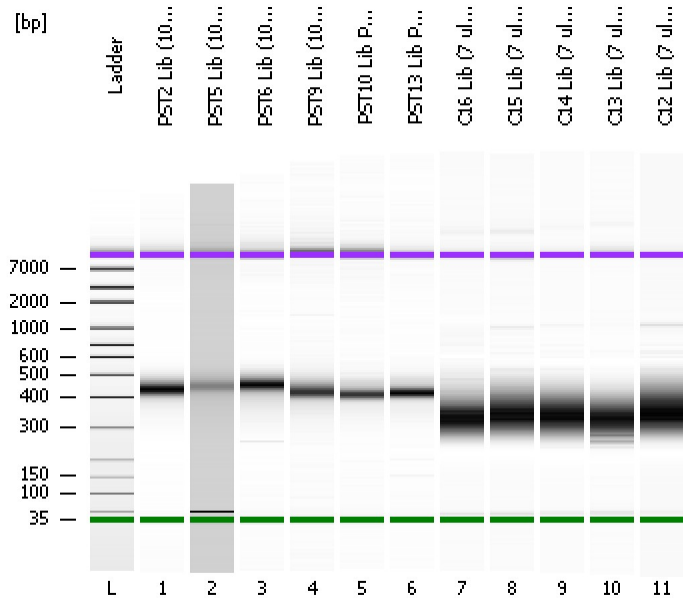


Assay Class: High Sensitivity DNA Assay
Data Path: C:\...ents and Settings\Bioanalyzer\2012-03-08\2012-03-08_006.xad

Created: 3/8/2012 12:52:50 PM
Modified: 3/8/2012 3:43:52 PM

Electrophoresis File Run Summary



Instrument Information:
 Instrument Name: DE13701086 Firmware: C.01.069
 Serial#: DE13701086 Type: G2938B

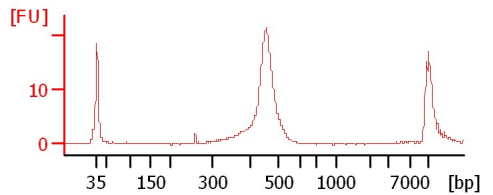
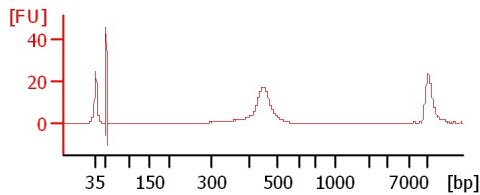
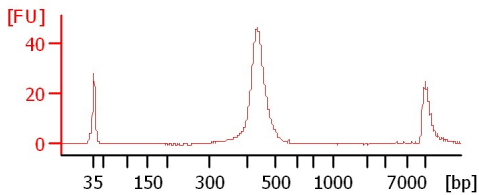
Assay Information:
 Assay Origin Path: C:\Program Files\Agilent\2100 bioanalyzer\2100 expert\assays\dsDNA\High Sensitivity DNA.xsy
 Assay Class: High Sensitivity DNA Assay
 Version: 1.03
 Assay Comments: Copyright © 2003-2010 Agilent Technologies

Chip Information:
 Chip Lot #:
 Reagent Kit Lot #:
 Chip Comments:

PST2 Lib (10 ul, 10 cycles)

PST5 Lib (10 ul, 10 cycles)

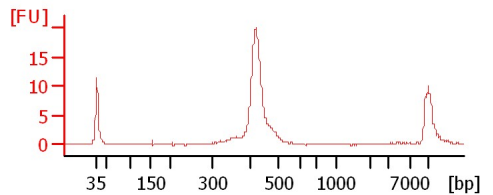
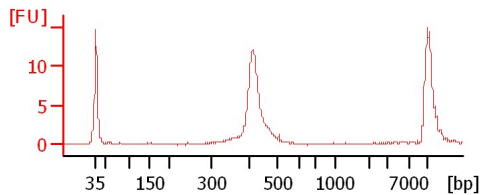
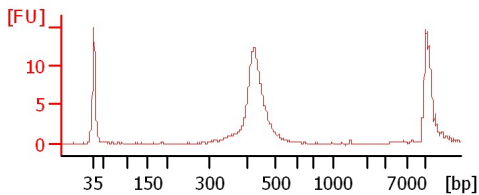
PST6 Lib (10 ul, 10 cycles)



PST9 Lib (10 ul, 10 cycles)

PST10 Lib PST6 Lib (10 ul, 10 cycles)

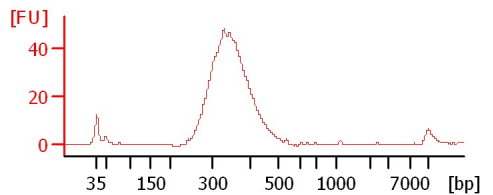
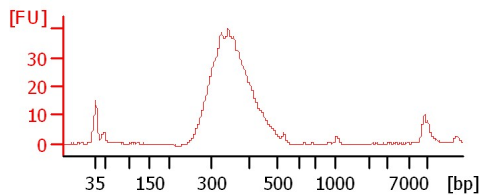
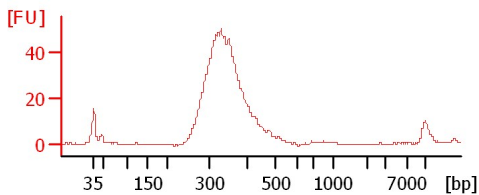
PST13 Lib PST6 Lib (10 ul, 10 cycles)



C16 Lib (7 ul, 10 cycles)

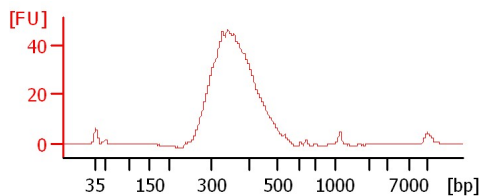
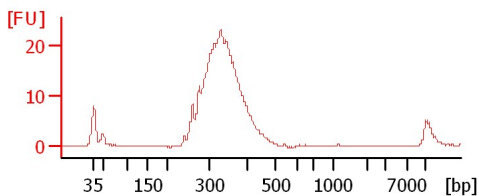
C15 Lib (7 ul, 10 cycles)

C14 Lib (7 ul, 10 cycles)



C13 Lib (7 ul, 10 cycles)

C12 Lib (7 ul, 10 cycles)



Assay Class: High Sensitivity DNA Assay
Data Path: C:\...ents and Settings\Bioanalyzer\2012-03-08\2012-03-08_006.xad

Created: 3/8/2012 12:52:50 PM
Modified: 3/8/2012 3:43:52 PM

Electrophoresis File Run Summary (Chip Summary)

Sample Name	Sample Comment	Rest. Digest	Status	Observation	Result Label	Result Color
PST2 Lib (10 ul, 10 cycles)		<input type="checkbox"/>	✓			
PST5 Lib (10 ul, 10 cycles)		<input type="checkbox"/>	✓			
PST6 Lib (10 ul, 10 cycles)		<input type="checkbox"/>	✓			
PST9 Lib (10 ul, 10 cycles)		<input type="checkbox"/>	✓			
PST10 Lib PST6 Lib (10 ul, 10 cycles)		<input type="checkbox"/>	✓			
PST13 Lib PST6 Lib (10 ul, 10 cycles)		<input type="checkbox"/>	✓			
C16 Lib (7 ul, 10 cycles)		<input type="checkbox"/>	✓			
C15 Lib (7 ul, 10 cycles)		<input type="checkbox"/>	✓			
C14 Lib (7 ul, 10 cycles)		<input type="checkbox"/>	✓			
C13 Lib (7 ul, 10 cycles)		<input type="checkbox"/>	✓			
C12 Lib (7 ul, 10 cycles)		<input type="checkbox"/>	✓			
Ladder		<input type="checkbox"/>	✓			

Chip Lot #**Reagent Kit Lot #****Chip Comments :**

Assay Class: High Sensitivity DNA Assay
 Data Path: C:\...ents and Settings\Bioanalyzer\2012-03-08\2012-03-08_006.xad

Created: 3/8/2012 12:52:50 PM
 Modified: 3/8/2012 3:43:52 PM

Electrophoresis Assay Details

General Analysis Settings

Number of Available Sample and Ladder Wells (Max.) : 12
 Minimum Visible Range [s] : 32
 Maximum Visible Range [s] : 138
 Start Analysis Time Range [s] : 33
 End Analysis Time Range [s] : 137.5
 Ladder Concentration [pg/μl] : 1950
 Uses Standard Area for Ladder Fragments
 Lower Marker Concentration [pg/μl] : 125
 Upper Marker Concentration [pg/μl] : 75
 Used Upper Marker for Quantitation
 Standard Curve Fit is Point to Point
 Show Data Aligned to Lower and Upper Marker

Integrator Settings

Integration Start Time [s] : 33.05
 Integration End Time [s] : 137
 Slope Threshold : 0.8
 Height Threshold [FU] : 5
 Area Threshold : 0.1
 Width Threshold [s] : 0.6
 Baseline Plateau [s] : 0.5

Filter Settings

Filter Width [s] : 0.5
 Polynomial Order : 4

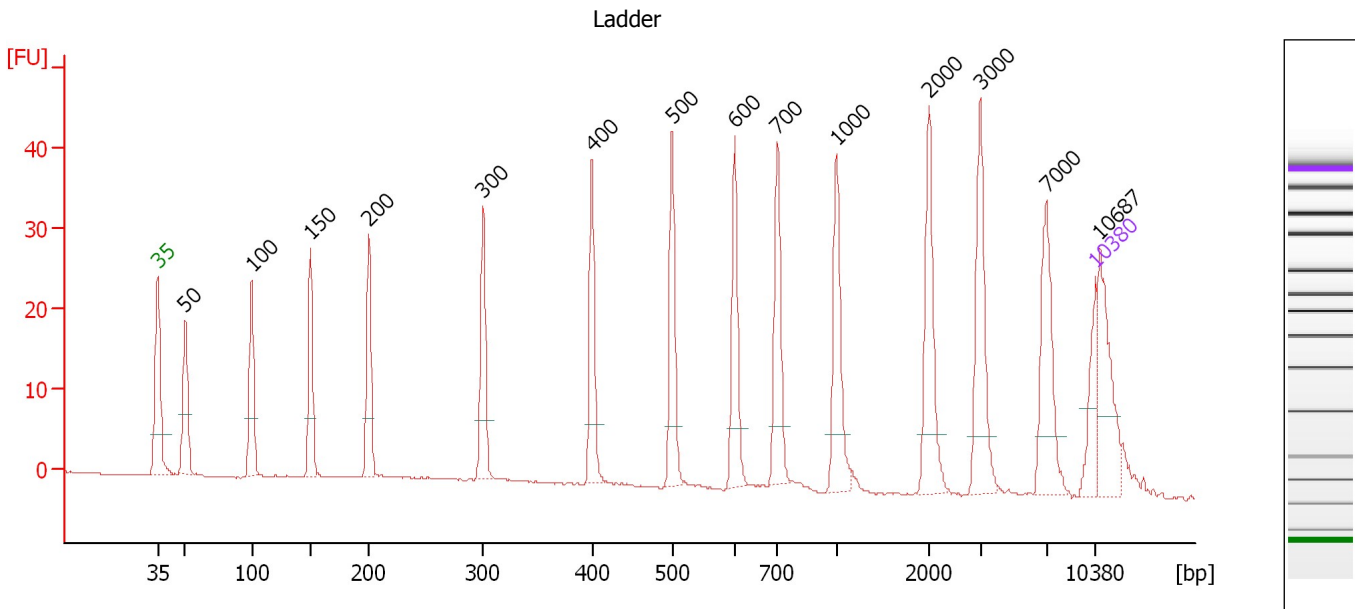
Ladder

Ladder Peak	Size	Area
1	35	160
2	50	210
3	100	208
4	150	221
5	200	242
6	300	270
7	400	305
8	500	306
9	600	336
10	700	321
11	1000	366
12	2000	413
13	3000	411
14	7000	400
15	10380	214

Assay Class: High Sensitivity DNA Assay
 Data Path: C:\...ents and Settings\Bioanalyzer\2012-03-08\2012-03-08_006.xad

Created: 3/8/2012 12:52:50 PM
 Modified: 3/8/2012 3:43:52 PM

Electropherogram Summary



Overall Results for Ladder

Noise: 0.1

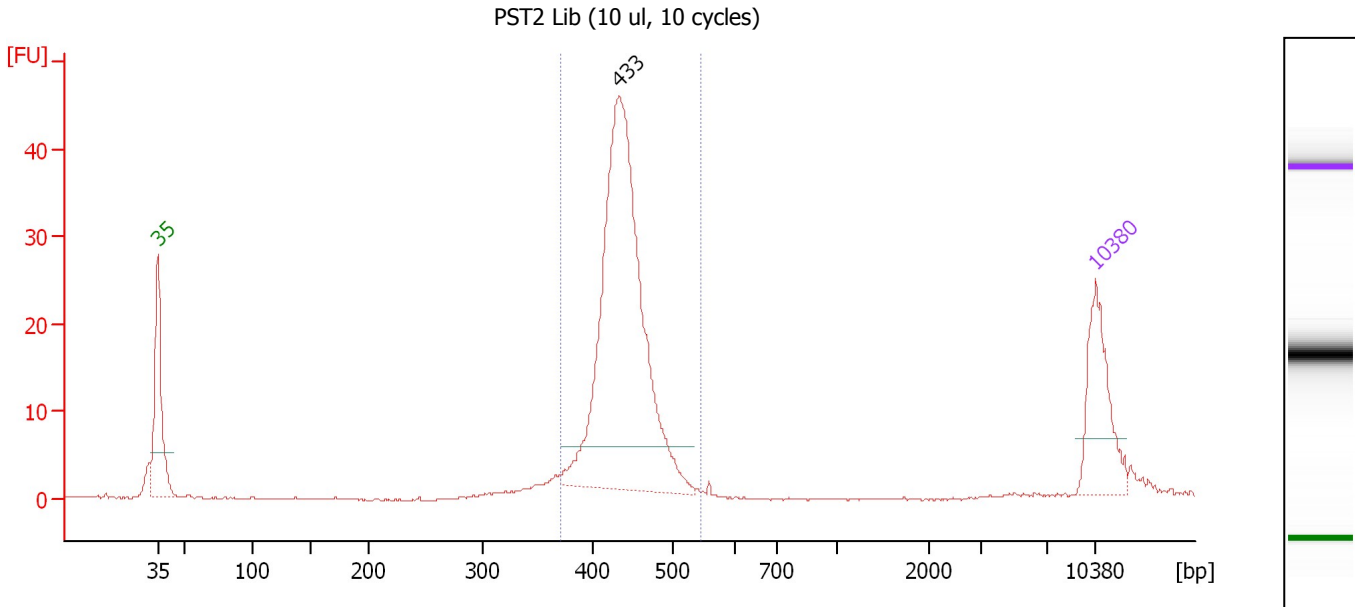
Peak table for Ladder

Peak	Size [bp]	Conc. [pg/μl]	Molarity [pmol/l]	Observations
1	35	125.00	5,411.3	Lower Marker
2	50	150.00	4,545.5	Ladder Peak
3	100	150.00	2,272.7	Ladder Peak
4	150	150.00	1,515.2	Ladder Peak
5	200	150.00	1,136.4	Ladder Peak
6	300	150.00	757.6	Ladder Peak
7	400	150.00	568.2	Ladder Peak
8	500	150.00	454.5	Ladder Peak
9	600	150.00	378.8	Ladder Peak
10	700	150.00	324.7	Ladder Peak
11	1,000	150.00	227.3	Ladder Peak
12	2,000	150.00	113.6	Ladder Peak
13	3,000	150.00	75.8	Ladder Peak
14	7,000	150.00	32.5	Ladder Peak
15	10,380	75.00	10.9	Upper Marker
16	10,687	0.00	0.0	

Assay Class: High Sensitivity DNA Assay
 Data Path: C:\...ents and Settings\Bioanalyzer\2012-03-08\2012-03-08_006.xad

Created: 3/8/2012 12:52:50 PM
 Modified: 3/8/2012 3:43:52 PM

Electropherogram Summary Continued ...



Overall Results for sample 1 : PST2 Lib (10 ul, 10 cycles)

Number of peaks found: 1 Corr. Area 1: 208.7
 Noise: 0.1

Peak table for sample 1 : PST2 Lib (10 ul, 10 cycles)

Peak	Size [bp]	Conc. [pg/μl]	Molarity [pmol/l]	Observations
1	35	125.00	5,411.3	Lower Marker
2	433	546.22	1,910.0	
3	10,380	75.00	10.9	Upper Marker

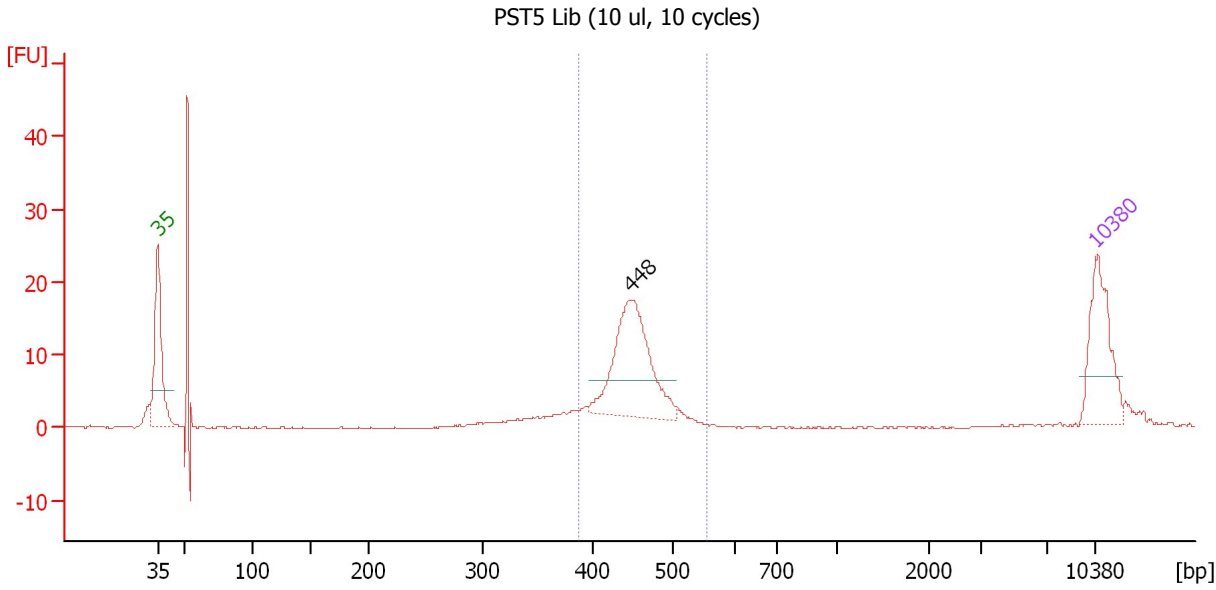
Region table for sample 1 : PST2 Lib (10 ul, 10 cycles)

From [bp]	Molarity [pmol/l]	Average Size [bp]	Conc. [pg/μl]	To [bp]	Corr. Area	% of Total	Size distribution in CV [%]	Color
372	1,986.6	439	573.73	546	208.7	90	6.4	Blue

Assay Class: High Sensitivity DNA Assay
 Data Path: C:\...ents and Settings\Bioanalyzer\2012-03-08\2012-03-08_006.xad

Created: 3/8/2012 12:52:50 PM
 Modified: 3/8/2012 3:43:52 PM

Electropherogram Summary Continued ...



Overall Results for sample 2 : PST5 Lib (10 ul, 10 cycles)

Number of peaks found: 1 Corr. Area 1: 80.1
 Noise: 0.1

Peak table for sample 2 : PST5 Lib (10 ul, 10 cycles)

Peak	Size [bp]	Conc. [pg/μl]	Molarity [pmol/l]	Observations
1	35	125.00	5,411.3	Lower Marker
2	448	190.71	645.5	
3	10,380	75.00	10.9	Upper Marker

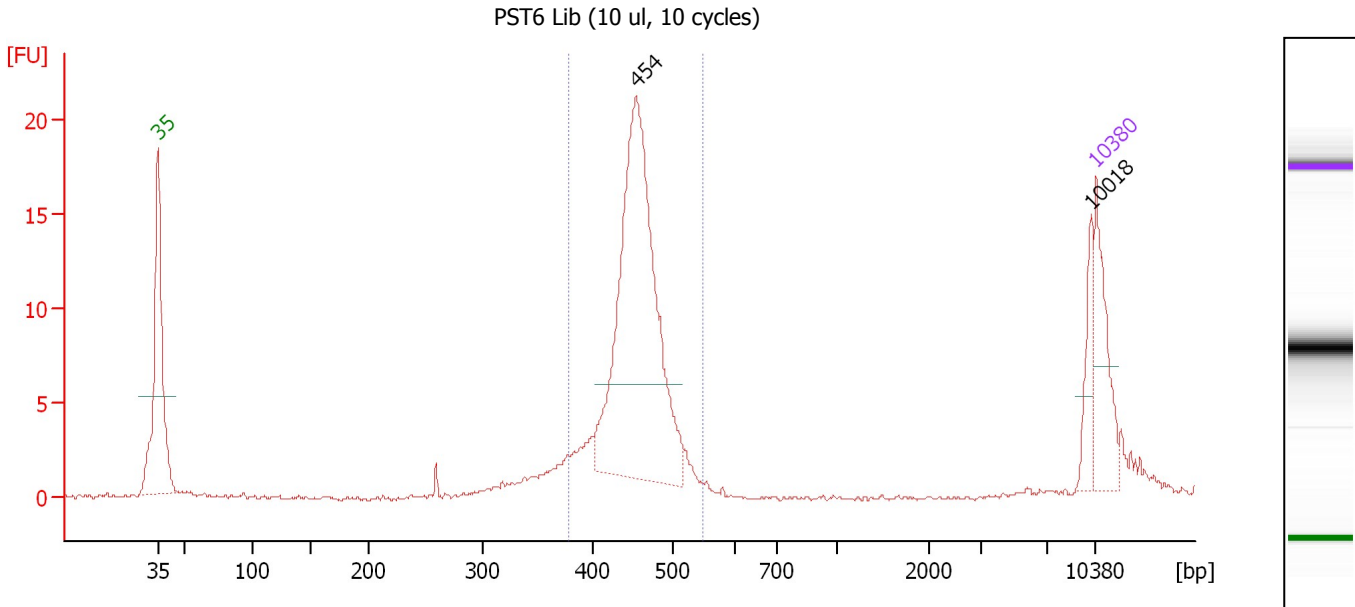
Region table for sample 2 : PST5 Lib (10 ul, 10 cycles)

From [bp]	Molarity [pmol/l]	Average Size [bp]	Conc. [pg/μl]	To [bp]	Corr. Area	% of Total	Size distribution in CV [%]	Color
387	821.8	451	243.98	555	80.1	66	6.5	Blue

Assay Class: High Sensitivity DNA Assay
 Data Path: C:\...ents and Settings\Bioanalyzer\2012-03-08\2012-03-08_006.xad

Created: 3/8/2012 12:52:50 PM
 Modified: 3/8/2012 3:43:52 PM

Electropherogram Summary Continued ...



Overall Results for sample 3 : PST6 Lib (10 ul, 10 cycles)

Number of peaks found: 2 Corr. Area 1: 94.1
 Noise: 0.1

Peak table for sample 3 : PST6 Lib (10 ul, 10 cycles)

Peak	Size [bp]	Conc. [pg/μl]	Molarity [pmol/l]	Observations
1	35	125.00	5,411.3	Lower Marker
2	454	515.66	1,719.6	
3	10,018	36.56	5.5	
4	10,380	75.00	10.9	Upper Marker

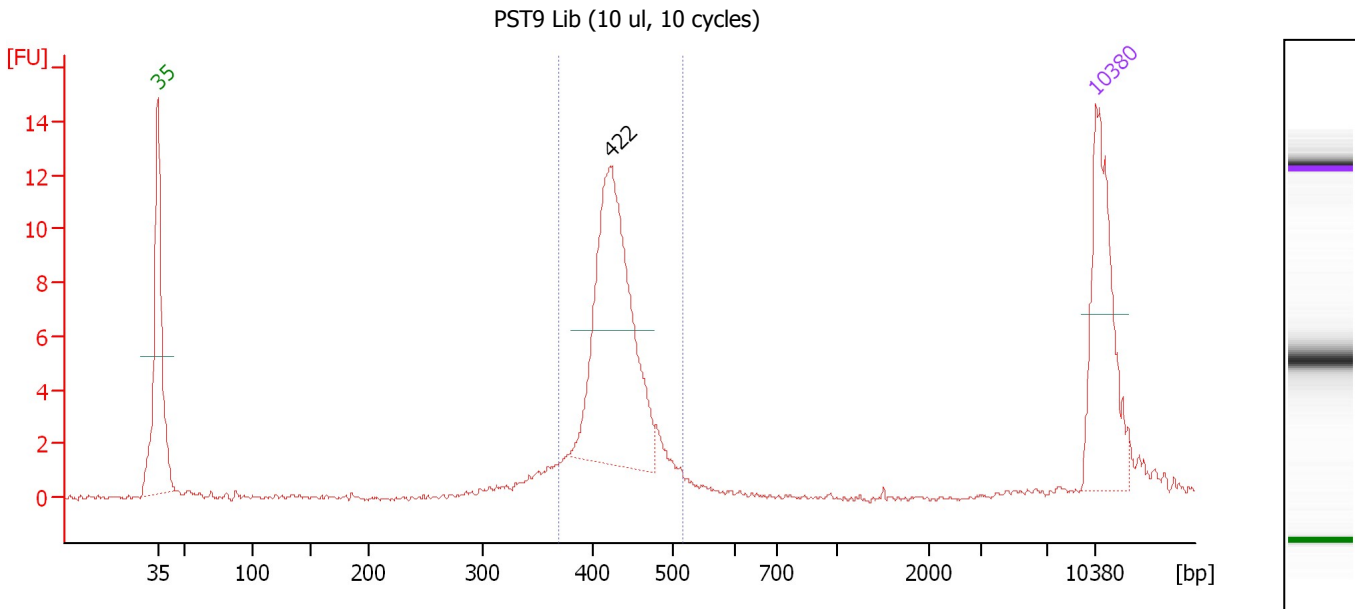
Region table for sample 3 : PST6 Lib (10 ul, 10 cycles)

From [bp]	Molarity [pmol/l]	Average Size [bp]	Conc. [pg/μl]	To [bp]	Corr. Area	% of Total	Size distribution in CV [%]	Color
379	2,062.3	454	616.51	549	94.1	80	6.7	Blue

Assay Class: High Sensitivity DNA Assay
 Data Path: C:\...ents and Settings\Bioanalyzer\2012-03-08\2012-03-08_006.xad

Created: 3/8/2012 12:52:50 PM
 Modified: 3/8/2012 3:43:52 PM

Electropherogram Summary Continued ...



Overall Results for sample 4 : PST9 Lib (10 ul, 10 cycles)

Number of peaks found: 1 Corr. Area 1: 58.1
 Noise: 0.1

Peak table for sample 4 : PST9 Lib (10 ul, 10 cycles)

Peak	Size [bp]	Conc. [pg/μl]	Molarity [pmol/l]	Observations
1	35	125.00	5,411.3	Lower Marker
2	422	210.40	755.5	
3	10,380	75.00	10.9	Upper Marker

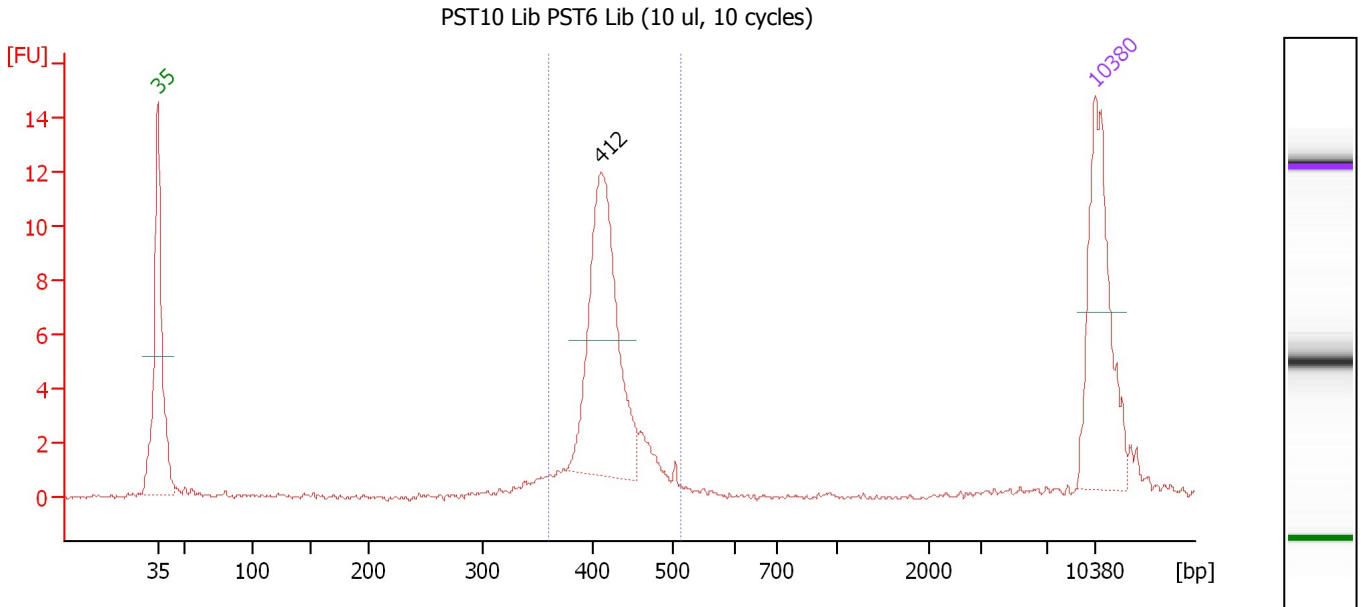
Region table for sample 4 : PST9 Lib (10 ul, 10 cycles)

From [bp]	Molarity [pmol/l]	Average Size [bp]	Conc. [pg/μl]	To [bp]	Corr. Area	% of Total	Size distribution in CV [%]	Color
369	989.6	430	280.20	518	58.1	85	6.7	Blue

Assay Class: High Sensitivity DNA Assay
 Data Path: C:\...ents and Settings\Bioanalyzer\2012-03-08\2012-03-08_006.xad

Created: 3/8/2012 12:52:50 PM
 Modified: 3/8/2012 3:43:52 PM

Electropherogram Summary Continued ...



Overall Results for sample 5 : PST10 Lib PST6 Lib (10 ul, 10 cycles)

Number of peaks found: 1 Corr. Area 1: 46.7
 Noise: 0.1

Peak table for sample 5 : PST10 Lib PST6 Lib (10 ul, 10 cycles)

Peak	Size [bp]	Conc. [pg/μl]	Molarity [pmol/l]	Observations
1	35	125.00	5,411.3	Lower Marker
2	412	159.16	585.6	
3	10,380	75.00	10.9	Upper Marker

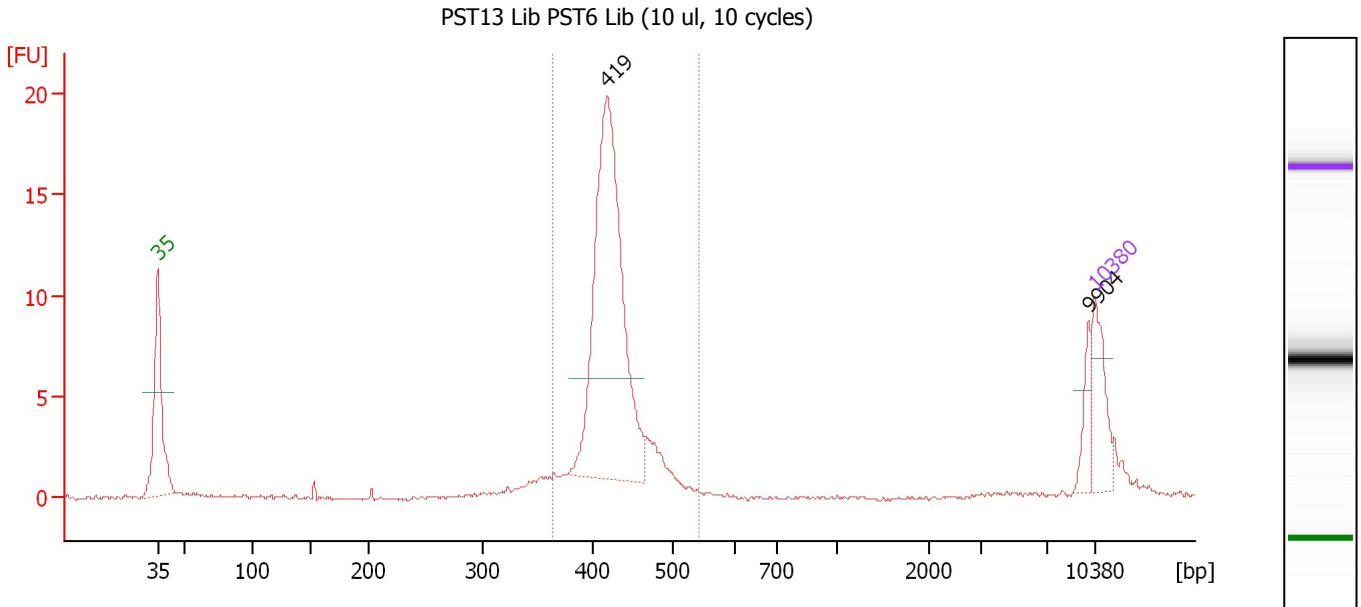
Region table for sample 5 : PST10 Lib PST6 Lib (10 ul, 10 cycles)

From [bp]	Molarity [pmol/l]	Average Size [bp]	Conc. [pg/μl]	To [bp]	Corr. Area	% of Total	Size distribution in CV [%]	Color
360	770.1	421	213.09	514	46.7	84	6.6	Blue

Assay Class: High Sensitivity DNA Assay
 Data Path: C:\...ents and Settings\Bioanalyzer\2012-03-08\2012-03-08_006.xad

Created: 3/8/2012 12:52:50 PM
 Modified: 3/8/2012 3:43:52 PM

Electropherogram Summary Continued ...



Overall Results for sample 6 : PST13 Lib PST6 Lib (10 ul, 10 cycles)

Number of peaks found: 2 Corr. Area 1: 72.9
 Noise: 0.1

Peak table for sample 6 : PST13 Lib PST6 Lib (10 ul, 10 cycles)

Peak	Size [bp]	Conc. [pg/μl]	Molarity [pmol/l]	Observations
1	35	125.00	5,411.3	Lower Marker
2	419	680.95	2,462.7	
3	9,904	37.02	5.7	
4	10,380	75.00	10.9	Upper Marker

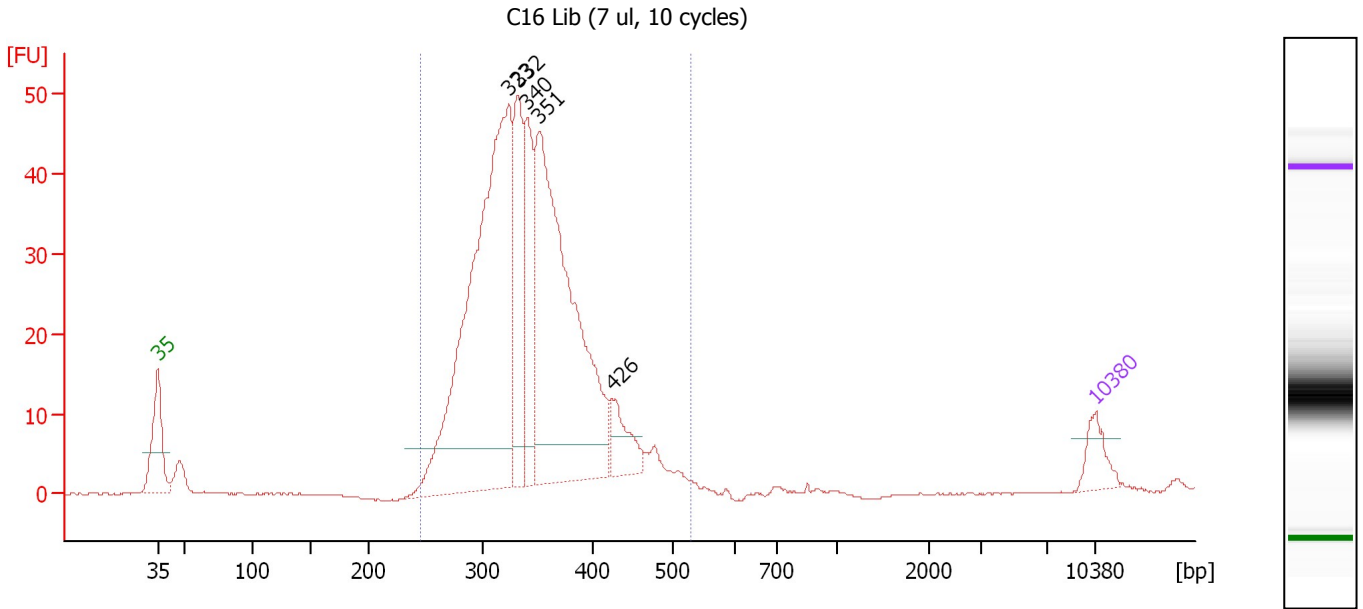
Region table for sample 6 : PST13 Lib PST6 Lib (10 ul, 10 cycles)

From [bp]	Molarity [pmol/l]	Average Size [bp]	Conc. [pg/μl]	To [bp]	Corr. Area	% of Total	Size distribution in CV [%]	Color
364	3,074.1	427	863.06	541	72.9	78	6.6	Blue

Assay Class: High Sensitivity DNA Assay
 Data Path: C:\...ents and Settings\Bioanalyzer\2012-03-08\2012-03-08_006.xad

Created: 3/8/2012 12:52:50 PM
 Modified: 3/8/2012 3:43:52 PM

Electropherogram Summary Continued ...



Overall Results for sample 7 : C16 Lib (7 ul, 10 cycles)

Number of peaks found: 5 Corr. Area 1: 572.6
 Noise: 0.1

Peak table for sample 7 : C16 Lib (7 ul, 10 cycles)

Peak	Size [bp]	Conc. [pg/μl]	Molarity [pmol/l]	Observations
1	35	125.00	5,411.3	Lower Marker
2	323	1,969.77	9,230.3	
3	332	451.56	2,062.8	
4	340	366.70	1,634.0	
5	351	1,526.07	6,588.9	
6	426	136.28	485.0	
7	10,380	75.00	10.9	Upper Marker

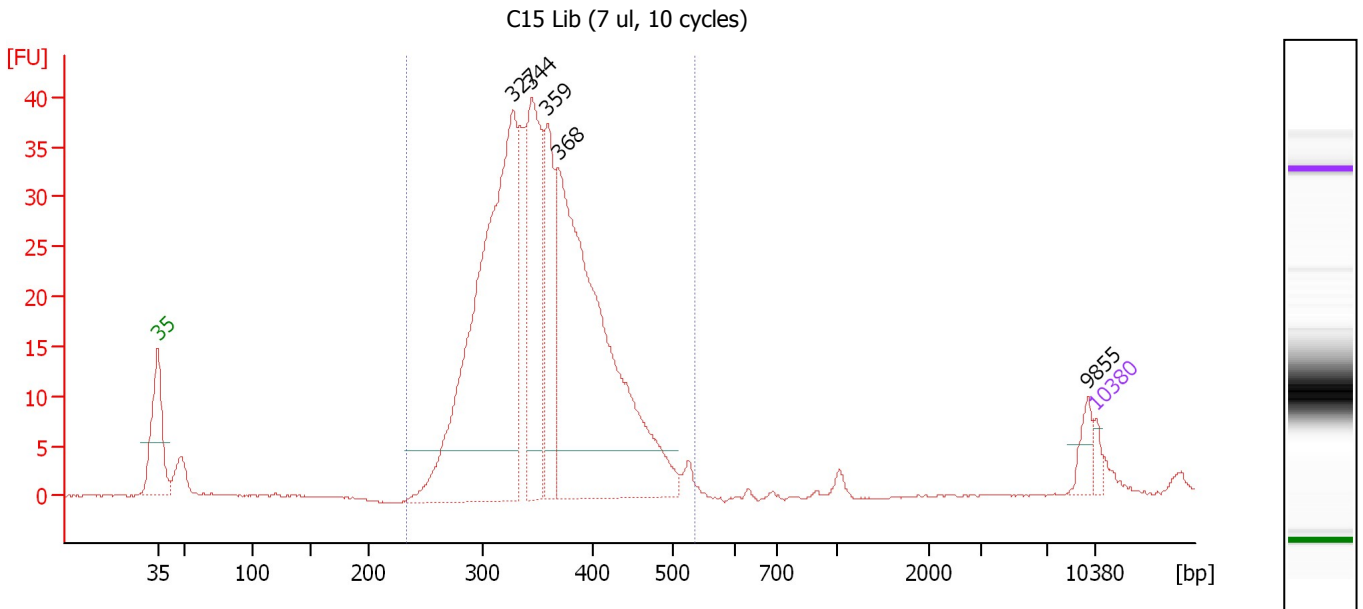
Region table for sample 7 : C16 Lib (7 ul, 10 cycles)

From [bp]	Molarity [pmol/l]	Average Size [bp]	Conc. [pg/μl]	To [bp]	Corr. Area	% of Total	Size distribution in CV [%]	Color
246	21,508.2	345	4,785.61	529	572.6	97	14.2	Blue

Assay Class: High Sensitivity DNA Assay
 Data Path: C:\...ents and Settings\Bioanalyzer\2012-03-08\2012-03-08_006.xad

Created: 3/8/2012 12:52:50 PM
 Modified: 3/8/2012 3:43:52 PM

Electropherogram Summary Continued ...



Overall Results for sample 8 : C15 Lib (7 ul, 10 cycles)

Number of peaks found: 5 Corr. Area 1: 492.4
 Noise: 0.1

Peak table for sample 8 : C15 Lib (7 ul, 10 cycles)

Peak	Size [bp]	Conc. [pg/μl]	Molarity [pmol/l]	Observations
1	35	125.00	5,411.3	Lower Marker
2	327	6,091.53	28,182.2	
3	344	2,176.57	9,583.0	
4	359	1,330.52	5,617.8	
5	368	5,725.25	23,543.8	
6	9,855	185.67	28.5	
7	10,380	75.00	10.9	Upper Marker

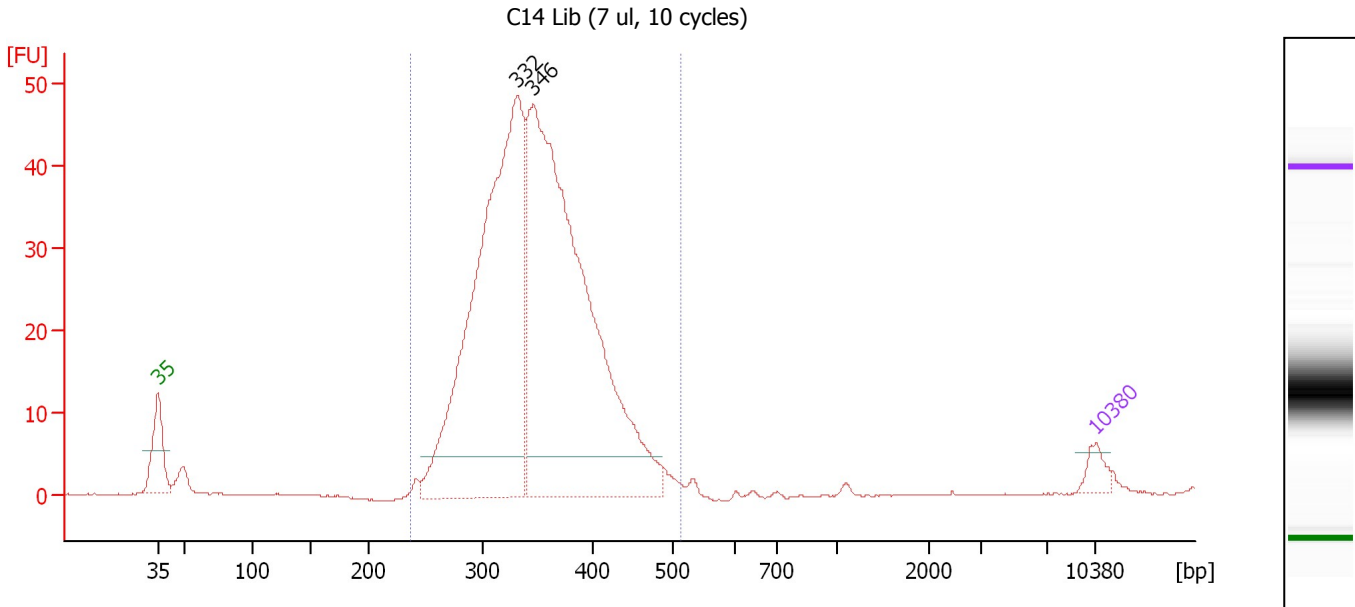
Region table for sample 8 : C15 Lib (7 ul, 10 cycles)

From [bp]	Molarity [pmol/l]	Average Size [bp]	Conc. [pg/μl]	To [bp]	Corr. Area	% of Total	Size distribution in CV [%]	Color
234	69,092.8	357	15,872.13	537	492.4	95	14.4	Blue

Assay Class: High Sensitivity DNA Assay
 Data Path: C:\...ents and Settings\Bioanalyzer\2012-03-08\2012-03-08_006.xad

Created: 3/8/2012 12:52:50 PM
 Modified: 3/8/2012 3:43:52 PM

Electropherogram Summary Continued ...



Overall Results for sample 9 : C14 Lib (7 ul, 10 cycles)

Number of peaks found: 2 Corr. Area 1: 579.0
 Noise: 0.1

Peak table for sample 9 : C14 Lib (7 ul, 10 cycles)

Peak	Size [bp]	Conc. [pg/μl]	Molarity [pmol/l]	Observations
1	35	125.00	5,411.3	Lower Marker
2	332	3,843.29	17,562.1	
3	346	4,536.42	19,876.7	
4	10,380	75.00	10.9	Upper Marker

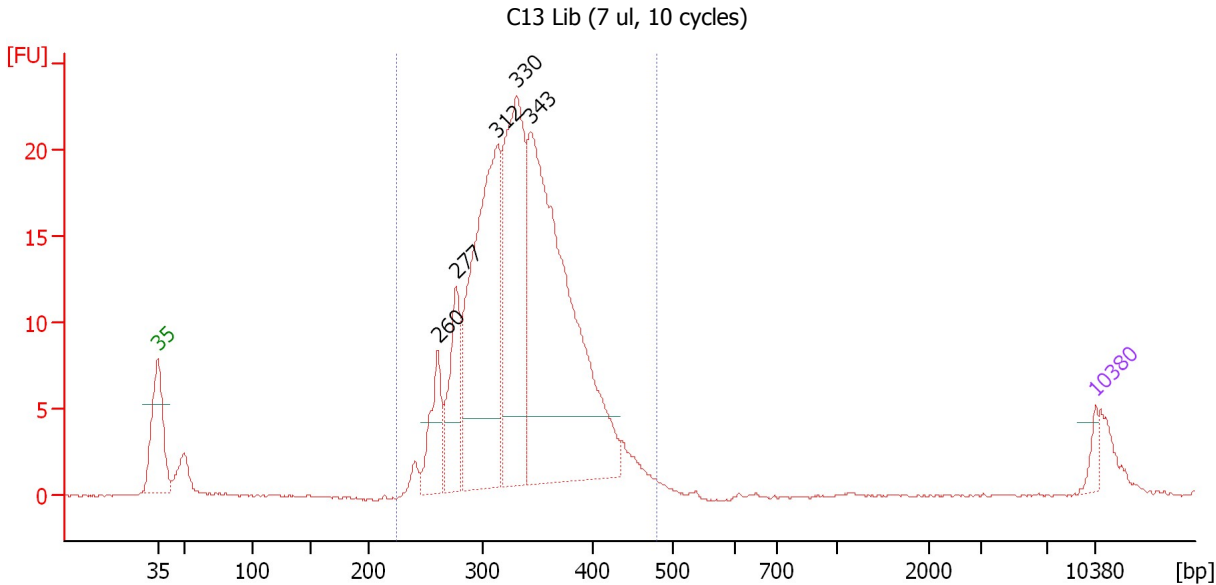
Region table for sample 9 : C14 Lib (7 ul, 10 cycles)

From [bp]	Molarity [pmol/l]	Average Size [bp]	Conc. [pg/μl]	To [bp]	Corr. Area	% of Total	Size distribution in CV [%]	Color
237	36,743.7	349	8,282.13	513	579.0	98	13.7	Blue

Assay Class: High Sensitivity DNA Assay
 Data Path: C:\...ents and Settings\Bioanalyzer\2012-03-08\2012-03-08_006.xad

Created: 3/8/2012 12:52:50 PM
 Modified: 3/8/2012 3:43:52 PM

Electropherogram Summary Continued ...



Setpoint Deviations for sample 10 : C13 Lib (7 ul, 10 cycles)

Height Threshold [FU] : 4

Overall Results for sample 10 : C13 Lib (7 ul, 10 cycles)

Number of peaks found: 5 Corr. Area 1: 259.2
 Noise: 0.1

Peak table for sample 10 : C13 Lib (7 ul, 10 cycles)

Peak	Size [bp]	Conc. [pg/μl]	Molarity [pmol/l]	Observations
1	35	125.00	5,411.3	Lower Marker
2	260	511.76	2,976.9	
3	277	681.34	3,733.5	
4	312	2,614.83	12,686.6	
5	330	2,065.71	9,470.8	
6	343	3,906.63	17,233.7	
7	10,380	75.00	10.9	Upper Marker

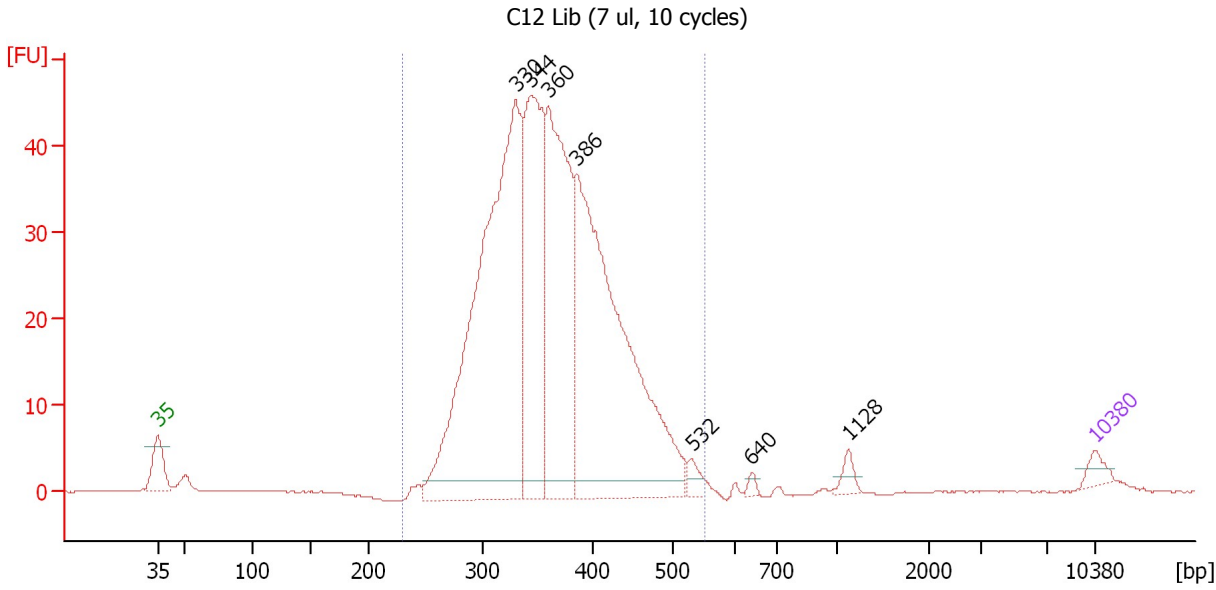
Region table for sample 10 : C13 Lib (7 ul, 10 cycles)

From [bp]	Molarity [pmol/l]	Average Size [bp]	Conc. [pg/μl]	To [bp]	Corr. Area	% of Total	Size distribution in CV [%]	Color
225	48,812.0	335	10,575.45	481	259.2	95	13.3	Blue

Assay Class: High Sensitivity DNA Assay
 Data Path: C:\...ents and Settings\Bioanalyzer\2012-03-08\2012-03-08_006.xad

Created: 3/8/2012 12:52:50 PM
 Modified: 3/8/2012 3:43:52 PM

Electropherogram Summary Continued ...



Setpoint Deviations for sample 11 : C12 Lib (7 ul, 10 cycles)

Height Threshold [FU] : 2

Overall Results for sample 11 : C12 Lib (7 ul, 10 cycles)

Number of peaks found: 7 Corr. Area 1: 621.0
 Noise: 0.1

Peak table for sample 11 : C12 Lib (7 ul, 10 cycles)

Peak	Size [bp]	Conc. [pg/μl]	Molarity [pmol/l]	Observations
1	35	125.00	5,411.3	Lower Marker
2	330	4,922.52	22,598.7	
3	344	2,091.76	9,206.5	
4	360	2,416.27	10,176.4	
5	386	3,954.99	15,540.5	
6	532	96.75	275.8	
7	640	35.06	83.0	
8	1,128	81.59	109.6	
9	10,380	75.00	10.9	Upper Marker

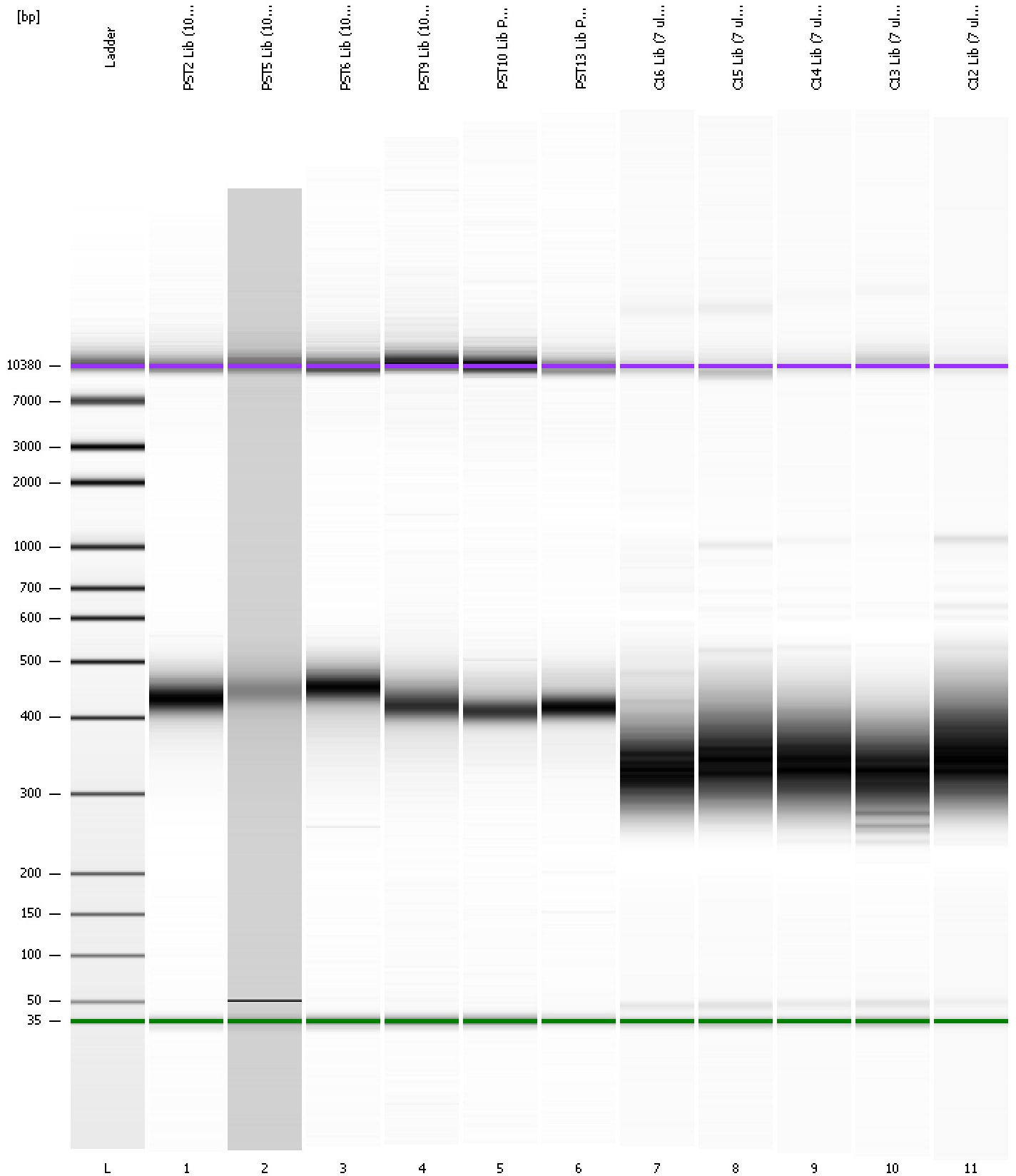
Region table for sample 11 : C12 Lib (7 ul, 10 cycles)

From [bp]	Molarity [pmol/l]	Average Size [bp]	Conc. [pg/μl]	To [bp]	Corr. Area	% of Total	Size distribution in CV [%]	Color
229	56,638.3	364	13,227.46	551	621.0	98	15.2	Blue

Assay Class: High Sensitivity DNA Assay
Data Path: C:\...ents and Settings\Bioanalyzer\2012-03-08\2012-03-08_006.xad

Created: 3/8/2012 12:52:50 PM
Modified: 3/8/2012 3:43:52 PM

Gel Image



Assay Class: High Sensitivity DNA Assay
 Data Path: C:\...ents and Settings\Bioanalyzer\2012-03-08\2012-03-08_006.xad

Created: 3/8/2012 12:52:50 PM
 Modified: 3/8/2012 3:43:52 PM

Run Logbook

Description	Number	Source	Category	Sub Category	Time	Time Zone	User	Host
Run ended on port 1 (Number of wells acquired: 12)		Instrument	Run		3/8/2012 1:34:07 PM	(GMT --08:00) Pacific Standard Time	UC Davis	D8XSMGH1
Run started on port 1 (File: C:\Documents and Settings\Bioanalyzer\2012-03-08\2012-03-08_006.xad)		Instrument	Run		3/8/2012 12:52:55 PM	(GMT --08:00) Pacific Standard Time	UC Davis	D8XSMGH1
Product Number : G2938B		Instrument	Run		3/8/2012 12:52:55 PM	(GMT --08:00) Pacific Standard Time	UC Davis	D8XSMGH1
Name :		Instrument	Run		3/8/2012 12:52:55 PM	(GMT --08:00) Pacific Standard Time	UC Davis	D8XSMGH1
Vendor : Agilent Technologies		Instrument	Run		3/8/2012 12:52:55 PM	(GMT --08:00) Pacific Standard Time	UC Davis	D8XSMGH1
Serial# : DE13701086		Instrument	Run		3/8/2012 12:52:55 PM	(GMT --08:00) Pacific Standard Time	UC Davis	D8XSMGH1
Firmware : C.01.069		Instrument	Run		3/8/2012 12:52:55 PM	(GMT --08:00) Pacific Standard Time	UC Davis	D8XSMGH1
Cartridge : Electrode		Instrument	Run		3/8/2012 12:52:55 PM	(GMT --08:00) Pacific Standard Time	UC Davis	D8XSMGH1