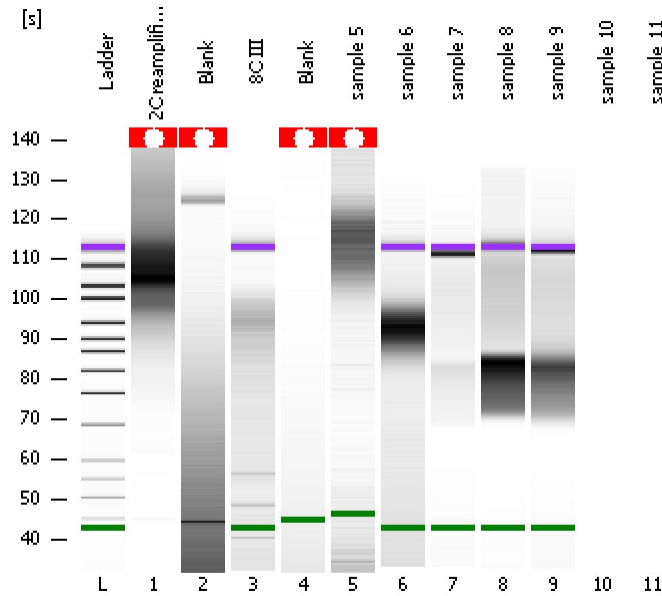


Assay Class: High Sensitivity DNA Assay
Data Path: C:\...ents and Settings\Bioanalyzer\2012-03-09\2012-03-09_002.xad

Created: 3/9/2012 10:16:25 AM
Modified: 3/9/2012 10:52:02 AM

Electrophoresis File Run Summary



Instrument Information:

Instrument Name: DE13701086 Firmware: C.01.069
Serial#: DE13701086 Type: G2938B

Assay Information:

Assay Origin Path: C:\Program Files\Agilent\2100 bioanalyzer\2100 expert\assays\dsDNA\High Sensitivity DNA.xsy
Assay Class: High Sensitivity DNA Assay
Version: 1.03
Assay Comments: Copyright © 2003-2010 Agilent Technologies

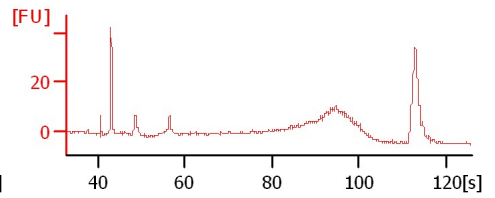
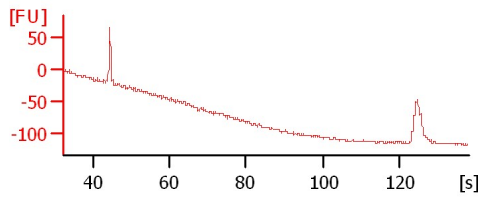
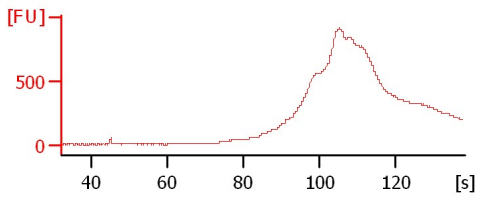
Chip Information:

Chip Lot #: Reagent Kit Lot #: Chip Comments:

2C reamplification

Blank

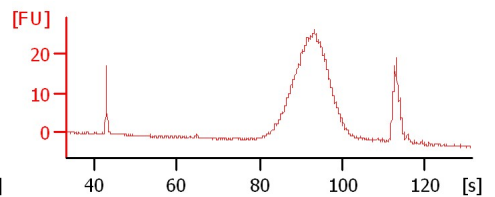
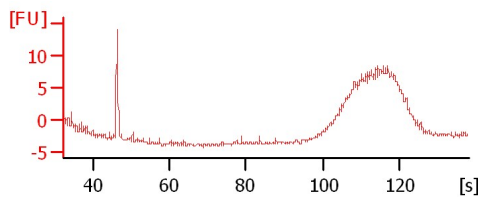
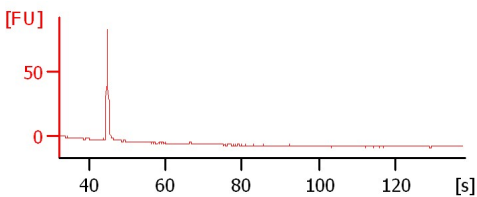
8C III



Blank

sample 5

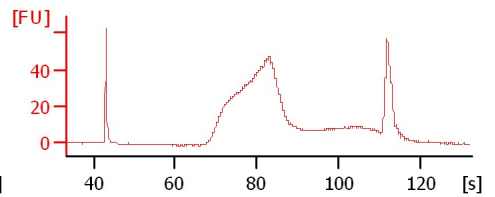
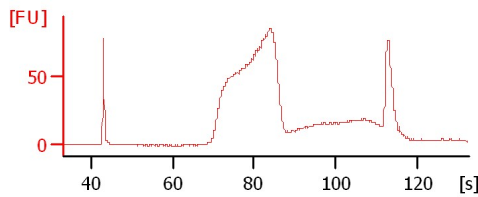
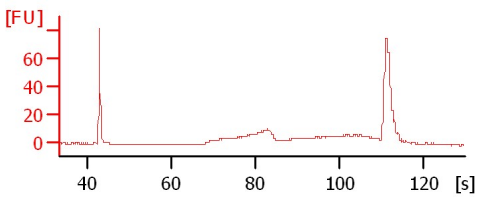
sample 6



sample 7

sample 8

sample 9



Assay Class: High Sensitivity DNA Assay
Data Path: C:\...ents and Settings\Bioanalyzer\2012-03-09\2012-03-09_002.xad

Created: 3/9/2012 10:16:25 AM
Modified: 3/9/2012 10:52:02 AM

Electrophoresis File Run Summary (Chip Summary)

Sample Name	Sample Comment	Rest. Digest	Status	Observation	Result Label	Result Color
2C reamplification		<input type="checkbox"/>	✓			
Blank		<input type="checkbox"/>	✓			
8C III		<input type="checkbox"/>	✓			
Blank		<input type="checkbox"/>	✓			
sample 5	1	<input type="checkbox"/>	✓			
sample 6	2	<input type="checkbox"/>	✓			
sample 7	3	<input type="checkbox"/>	✓			
sample 8	4	<input type="checkbox"/>	✓			
sample 9	5	<input type="checkbox"/>	✓			
sample 10		<input type="checkbox"/>				
sample 11		<input type="checkbox"/>				
Ladder		<input type="checkbox"/>	✓			

Chip Lot #

Reagent Kit Lot #

Chip Comments :

Assay Class: High Sensitivity DNA Assay
Data Path: C:\...ents and Settings\Bioanalyzer\2012-03-09\2012-03-09_002.xad

Created: 3/9/2012 10:16:25 AM
Modified: 3/9/2012 10:52:02 AM

Electrophoresis Assay Details

General Analysis Settings

Number of Available Sample and Ladder Wells (Max.) : 12
Minimum Visible Range [s] : 32
Maximum Visible Range [s] : 138
Start Analysis Time Range [s] : 33
End Analysis Time Range [s] : 137.5
Ladder Concentration [pg/μl] : 1950
Uses Standard Area for Ladder Fragments
Lower Marker Concentration [pg/μl] : 125
Upper Marker Concentration [pg/μl] : 75
Used Upper Marker for Quantitation
Standard Curve Fit is Point to Point
Show Data Aligned to Lower and Upper Marker

Integrator Settings

Integration Start Time [s] : 33.05
Integration End Time [s] : 137
Slope Threshold : 0.8
Height Threshold [FU] : 5
Area Threshold : 0.1
Width Threshold [s] : 0.6
Baseline Plateau [s] : 0.5

Filter Settings

Filter Width [s] : 0.5
Polynomial Order : 4

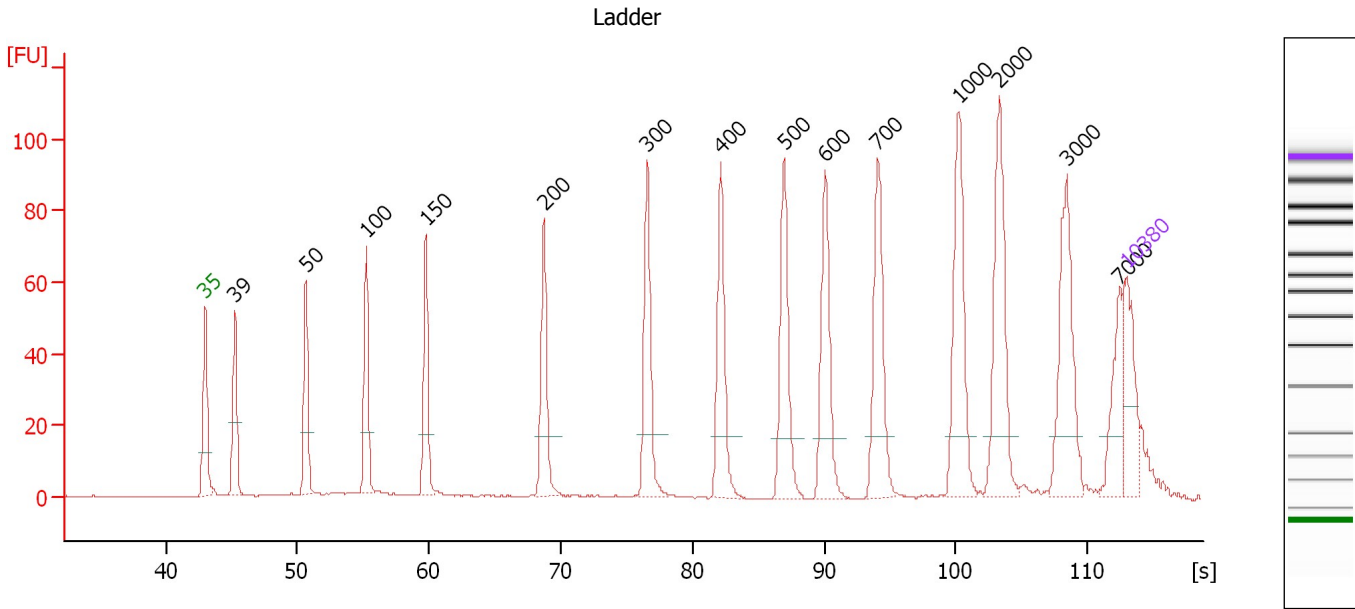
Ladder

Ladder Peak	Size	Area
1	35	160
2	50	210
3	100	208
4	150	221
5	200	242
6	300	270
7	400	305
8	500	306
9	600	336
10	700	321
11	1000	366
12	2000	413
13	3000	411
14	7000	400
15	10380	214

Assay Class: High Sensitivity DNA Assay
 Data Path: C:\...ents and Settings\Bioanalyzer\2012-03-09\2012-03-09_002.xad

Created: 3/9/2012 10:16:25 AM
 Modified: 3/9/2012 10:52:02 AM

Electropherogram Summary



Overall Results for Ladder

Noise: 0.2

Peak table for Ladder

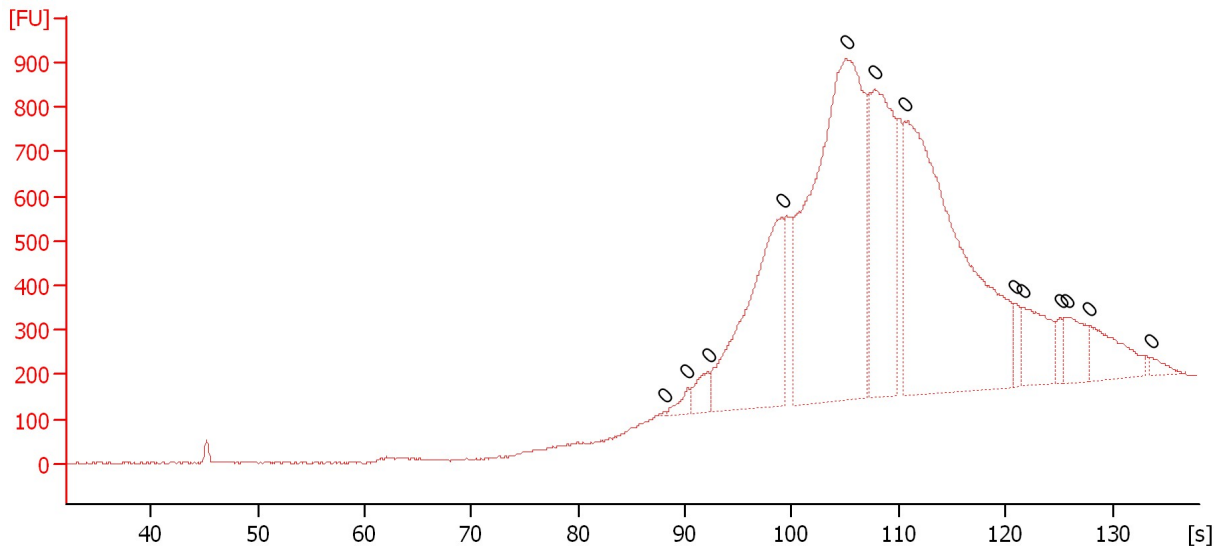
Peak	Size [bp]	Conc. [pg/μl]	Molarity [pmol/l]	Observations
1	35	125.00	5,411.3	Lower Marker
2	39	0.00	0.0	
3	50	150.00	4,545.5	Ladder Peak
4	100	150.00	2,272.7	Ladder Peak
5	150	150.00	1,515.2	Ladder Peak
6	200	150.00	1,136.4	Ladder Peak
7	300	150.00	757.6	Ladder Peak
8	400	150.00	568.2	Ladder Peak
9	500	150.00	454.5	Ladder Peak
10	600	150.00	378.8	Ladder Peak
11	700	150.00	324.7	Ladder Peak
12	1,000	150.00	227.3	Ladder Peak
13	2,000	150.00	113.6	Ladder Peak
14	3,000	150.00	75.8	Ladder Peak
15	7,000	150.00	32.5	Ladder Peak
16	10,380	75.00	10.9	Upper Marker

Assay Class: High Sensitivity DNA Assay
Data Path: C:\...ents and Settings\Bioanalyzer\2012-03-09\2012-03-09_002.xad

Created: 3/9/2012 10:16:25 AM
Modified: 3/9/2012 10:52:02 AM

Electropherogram Summary Continued ...

2C reamplification



Overall Results for sample 1 : 2C reamplification

Number of peaks found: 0 Noise: 2.5

Peak table for sample 1 : 2C reamplification

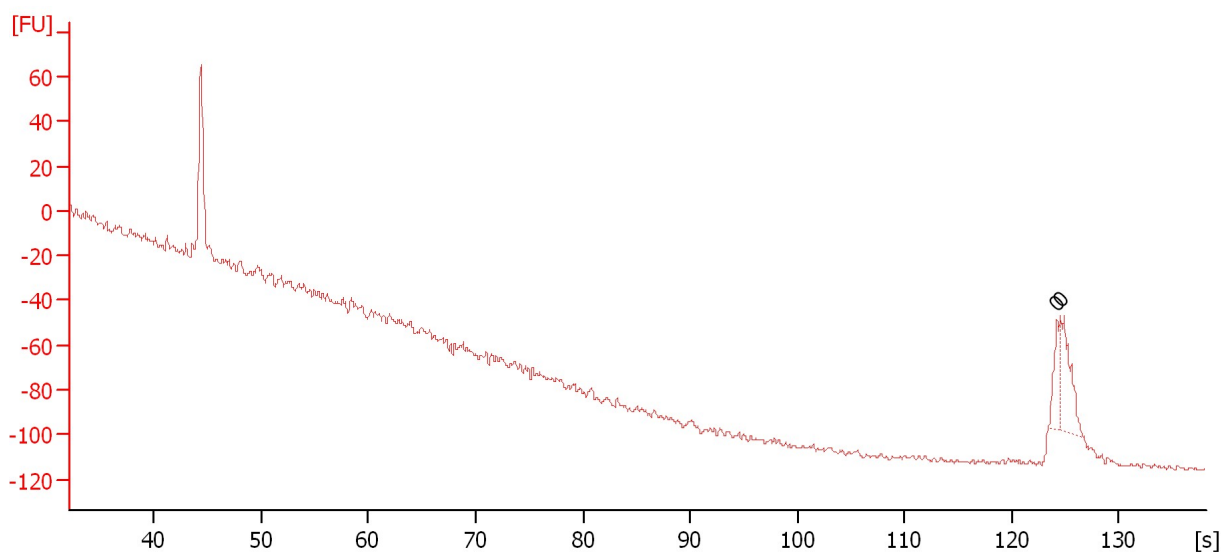
Peak	Size [bp]	Conc. [pg/μl]	Molarity [pmol/l]	Observations
1	0	0.00	0.0	
2	0	0.00	0.0	
3	0	0.00	0.0	
4	0	0.00	0.0	
5	0	0.00	0.0	
6	0	0.00	0.0	
7	0	0.00	0.0	
8	0	0.00	0.0	
9	0	0.00	0.0	
10	0	0.00	0.0	
11	0	0.00	0.0	
12	0	0.00	0.0	
13	0	0.00	0.0	

Assay Class: High Sensitivity DNA Assay
 Data Path: C:\...ents and Settings\Bioanalyzer\2012-03-09\2012-03-09_002.xad

Created: 3/9/2012 10:16:25 AM
 Modified: 3/9/2012 10:52:02 AM

Electropherogram Summary Continued ...

Blank



Overall Results for sample 2 : Blank

Number of peaks found: 0 Noise: 1.1

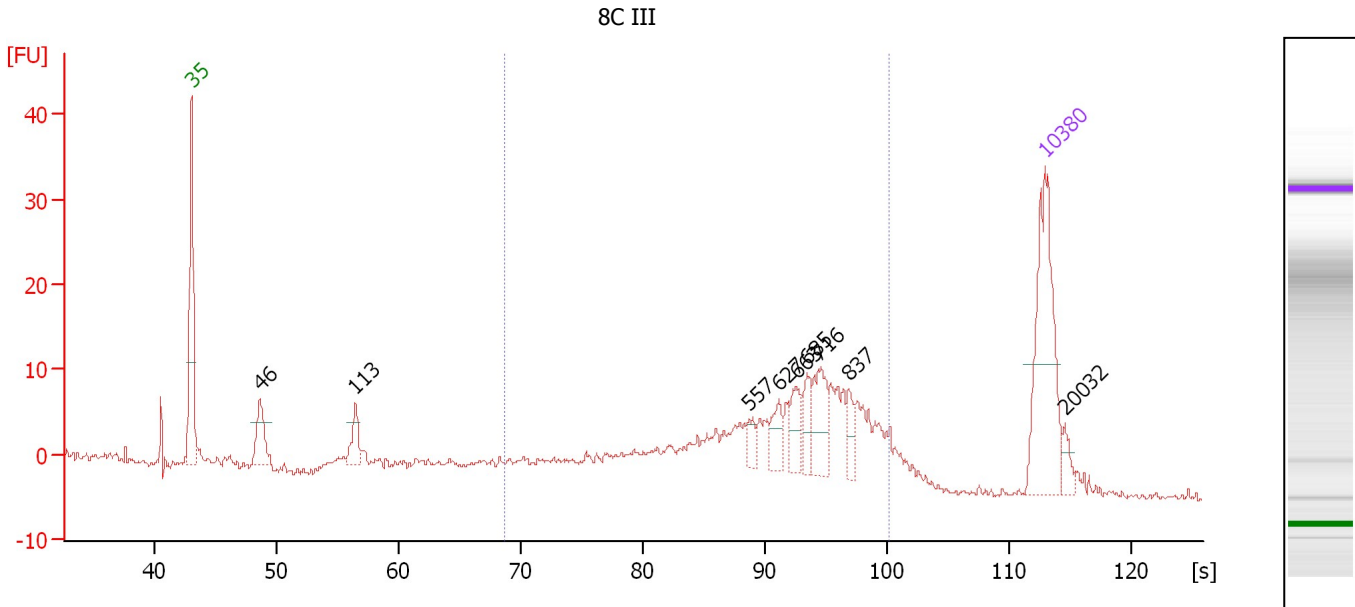
Peak table for sample 2 : Blank

Peak	Size [bp]	Conc. [pg/μl]	Molarity [pmol/l]	Observations
1	0	0.00	0.0	
2	0	0.00	0.0	

Assay Class: High Sensitivity DNA Assay
 Data Path: C:\...ents and Settings\Bioanalyzer\2012-03-09\2012-03-09_002.xad

Created: 3/9/2012 10:16:25 AM
 Modified: 3/9/2012 10:52:02 AM

Electropherogram Summary Continued ...



Overall Results for sample 3 : 8C III

Number of peaks found: 9 Corr. Area 1: 189.9
 Noise: 0.3

Peak table for sample 3 : 8C III

Peak	Size [bp]	Conc. [pg/μl]	Molarity [pmol/l]	Observations
1	35	125.00	5,411.3	Lower Marker
2	46	34.83	1,146.5	
3	113	21.81	291.6	
4	557	8.41	22.9	
5	627	15.30	37.0	
6	663	18.21	41.6	
7	685	15.31	33.9	
8	716	31.13	65.9	
9	837	11.70	21.2	
10	10,380	75.00	10.9	Upper Marker
11	20,032	0.00	0.0	

Region table for sample 3 : 8C III

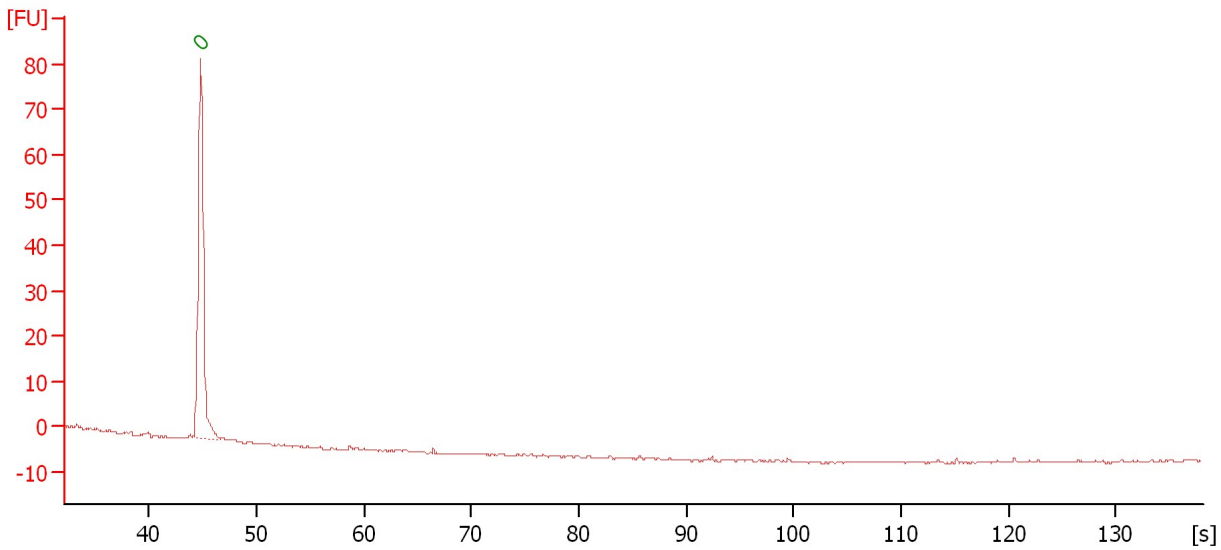
From [bp]	Molarity [pmol/l]	Average Size [bp]	Conc. [pg/μl]	To [bp]	Corr. Area	% of Total	Size distribution in CV [%]	Color
200	1,017.3	625	344.44	1,000	189.9	77	31.3	Blue

Assay Class: High Sensitivity DNA Assay
Data Path: C:\...ents and Settings\Bioanalyzer\2012-03-09\2012-03-09_002.xad

Created: 3/9/2012 10:16:25 AM
Modified: 3/9/2012 10:52:02 AM

Electropherogram Summary Continued ...

Blank



Overall Results for sample 4 : Blank

Number of peaks found: 0 Noise: 0.2

Peak table for sample 4 : Blank

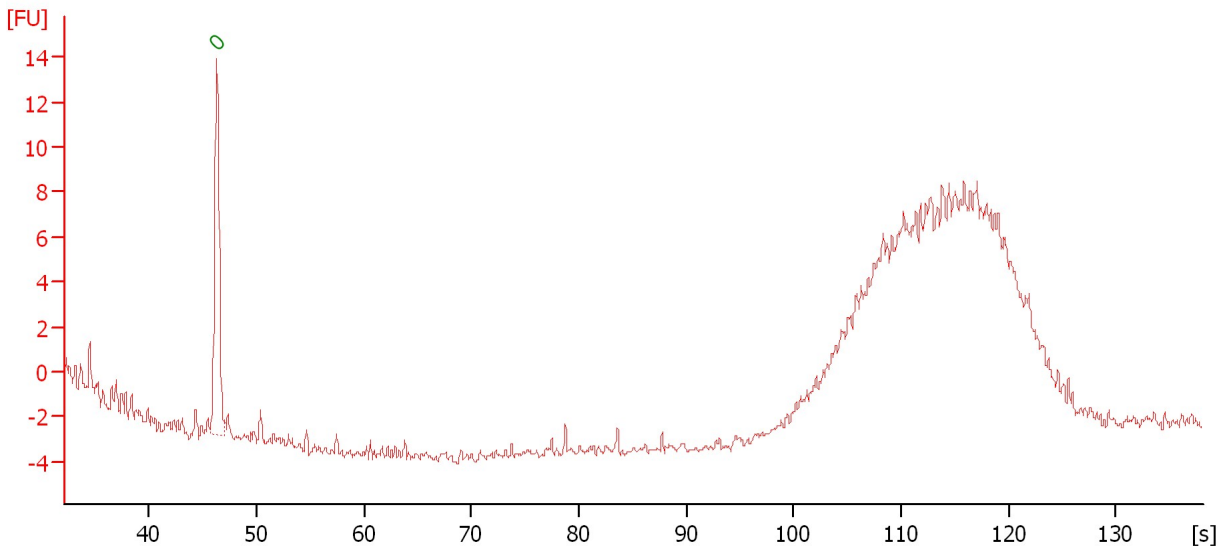
Peak	Size [bp]	Conc. [pg/μl]	Molarity [pmol/l]	Observations
1	0	0.00	0.0	Lower Marker

Assay Class: High Sensitivity DNA Assay
Data Path: C:\...ents and Settings\Bioanalyzer\2012-03-09\2012-03-09_002.xad

Created: 3/9/2012 10:16:25 AM
Modified: 3/9/2012 10:52:02 AM

Electropherogram Summary Continued ...

sample 5 [1]



Overall Results for sample 5 : sample 5

Number of peaks found: 0 Noise: 0.2

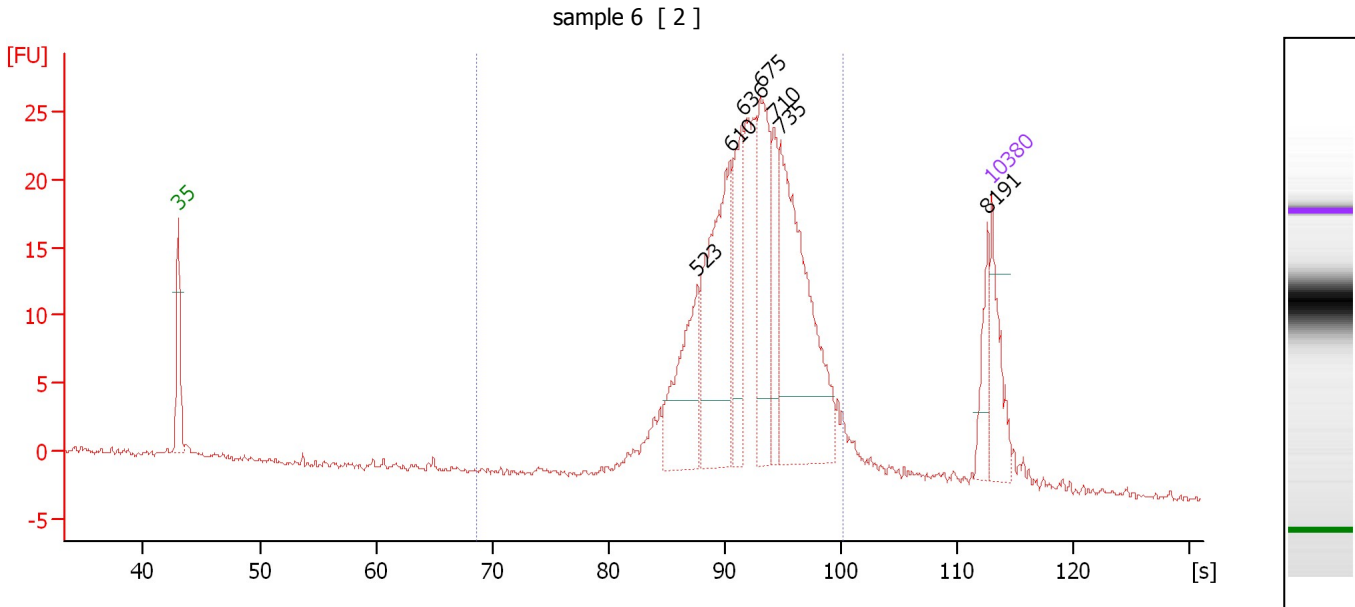
Peak table for sample 5 : sample 5

Peak	Size [bp]	Conc. [pg/μl]	Molarity [pmol/l]	Observations
1	0	0.00	0.0	Lower Marker

Assay Class: High Sensitivity DNA Assay
 Data Path: C:\...ents and Settings\Bioanalyzer\2012-03-09\2012-03-09_002.xad

Created: 3/9/2012 10:16:25 AM
 Modified: 3/9/2012 10:52:02 AM

Electropherogram Summary Continued ...



Overall Results for sample 6 : sample 6

Number of peaks found: 7 Corr. Area 1: 306.8
 Noise: 0.2

Peak table for sample 6 : sample 6

Peak	Size [bp]	Conc. [pg/μl]	Molarity [pmol/l]	Observations
1	35	125.00	5,411.3	Lower Marker
2	523	187.05	541.6	
3	610	300.19	745.3	
4	636	129.37	308.3	
5	675	207.38	465.5	
6	710	95.29	203.4	
7	735	401.60	827.9	
8	8,191	46.34	8.6	
9	10,380	75.00	10.9	Upper Marker

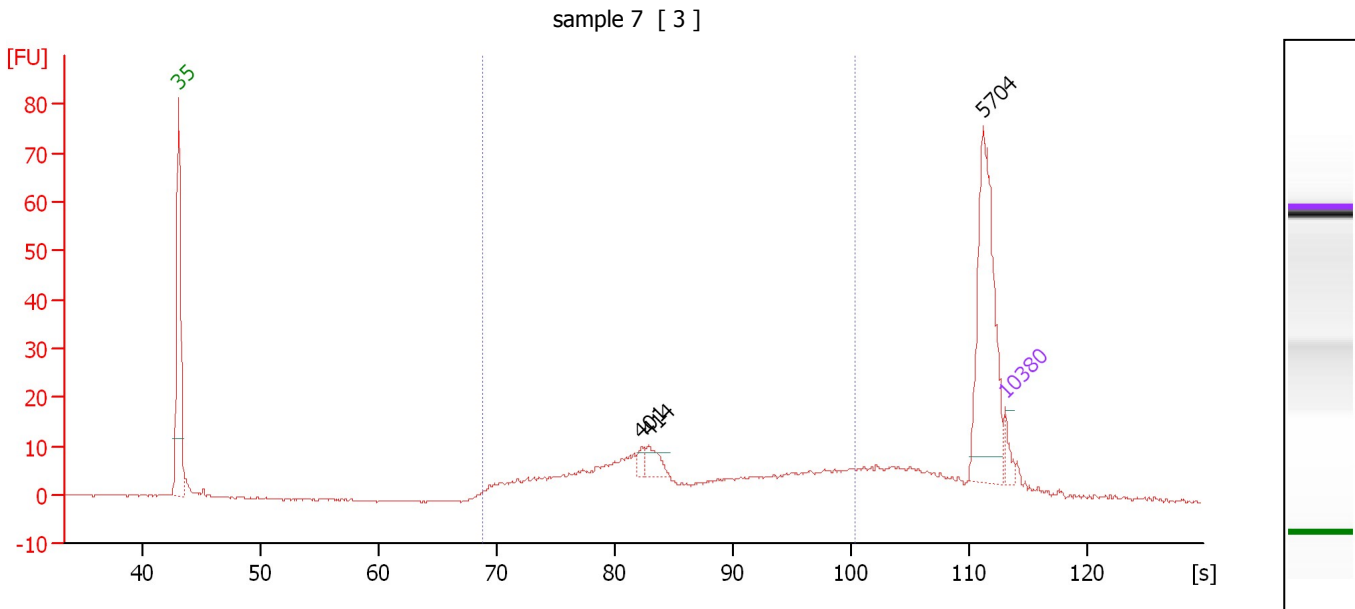
Region table for sample 6 : sample 6

From [bp]	Molarity [pmol/l]	Average Size [bp]	Conc. [pg/μl]	To [bp]	Corr. Area	% of Total	Size distribution in CV [%]	Color
200	3,992.2	668	1,679.91	1,000	306.8	90	19.0	Blue

Assay Class: High Sensitivity DNA Assay
 Data Path: C:\...ents and Settings\Bioanalyzer\2012-03-09\2012-03-09_002.xad

Created: 3/9/2012 10:16:25 AM
 Modified: 3/9/2012 10:52:02 AM

Electropherogram Summary Continued ...



Overall Results for sample 7 : sample 7

Number of peaks found: 3 Corr. Area 1: 199.5
 Noise: 0.2

Peak table for sample 7 : sample 7

Peak	Size [bp]	Conc. [pg/μl]	Molarity [pmol/l]	Observations
1	35	125.00	5,411.3	Lower Marker
2	401	70.39	265.7	
3	414	166.80	610.9	
4	5,704	1,233.84	327.7	
5	10,380	75.00	10.9	Upper Marker

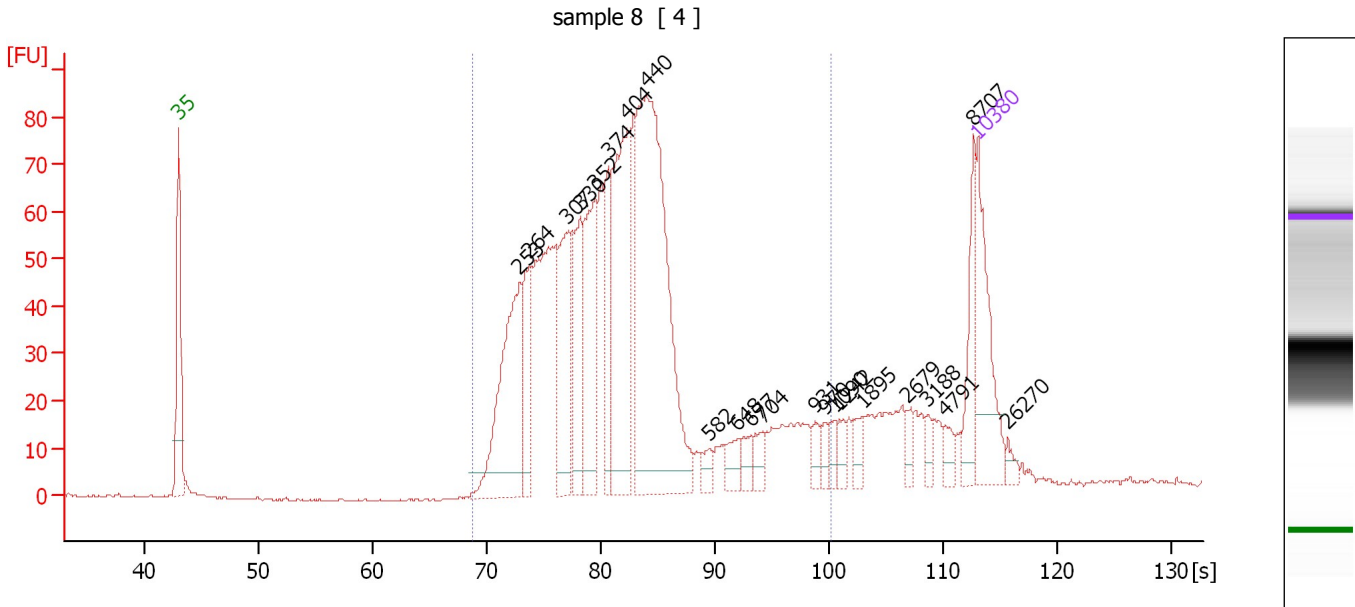
Region table for sample 7 : sample 7

From [bp]	Molarity [pmol/l]	Average Size [bp]	Conc. [pg/μl]	To [bp]	Corr. Area	% of Total	Size distribution in CV [%]	Color
200	11,701.6	508	3,054.97	1,000	199.5	50	43.2	Blue

Assay Class: High Sensitivity DNA Assay
 Data Path: C:\...ents and Settings\Bioanalyzer\2012-03-09\2012-03-09_002.xad

Created: 3/9/2012 10:16:25 AM
 Modified: 3/9/2012 10:52:02 AM

Electropherogram Summary Continued ...



Overall Results for sample 8 : sample 8

Number of peaks found: 22 Corr. Area 1: 1,368.9
 Noise: 0.2

Peak table for sample 8 : sample 8

Peak	Size [bp]	Conc. [pg/μl]	Molarity [pmol/l]	Observations
1	35	125.00	5,411.3	Lower Marker
2	253	197.03	1,181.7	
3	264	75.32	432.2	
4	307	134.12	662.0	
5	330	92.81	426.5	
6	352	112.67	484.3	
7	374	70.89	287.5	
8	404	176.65	663.3	
9	440	389.53	1,342.2	
10	582	12.01	31.3	
11	648	17.37	40.6	
12	677	14.08	31.5	
13	704	14.85	31.9	
14	931	11.14	18.1	
15	970	8.94	14.0	
16	1,090	10.82	15.0	
17	1,242	10.72	13.1	
18	1,895	13.15	10.5	
19	2,679	9.13	5.2	
20	3,188	7.64	3.6	
21	4,791	10.61	3.4	
22	8,707	39.32	6.8	
23	10,380	75.00	10.9	Upper Marker
24	26,270	0.00	0.0	

Assay Class: High Sensitivity DNA Assay
Data Path: C:\...ents and Settings\Bioanalyzer\2012-03-09\2012-03-09_002.xad

Created: 3/9/2012 10:16:25 AM
Modified: 3/9/2012 10:52:02 AM

Electropherogram Summary Continued ...

... Region table for sample 8 :

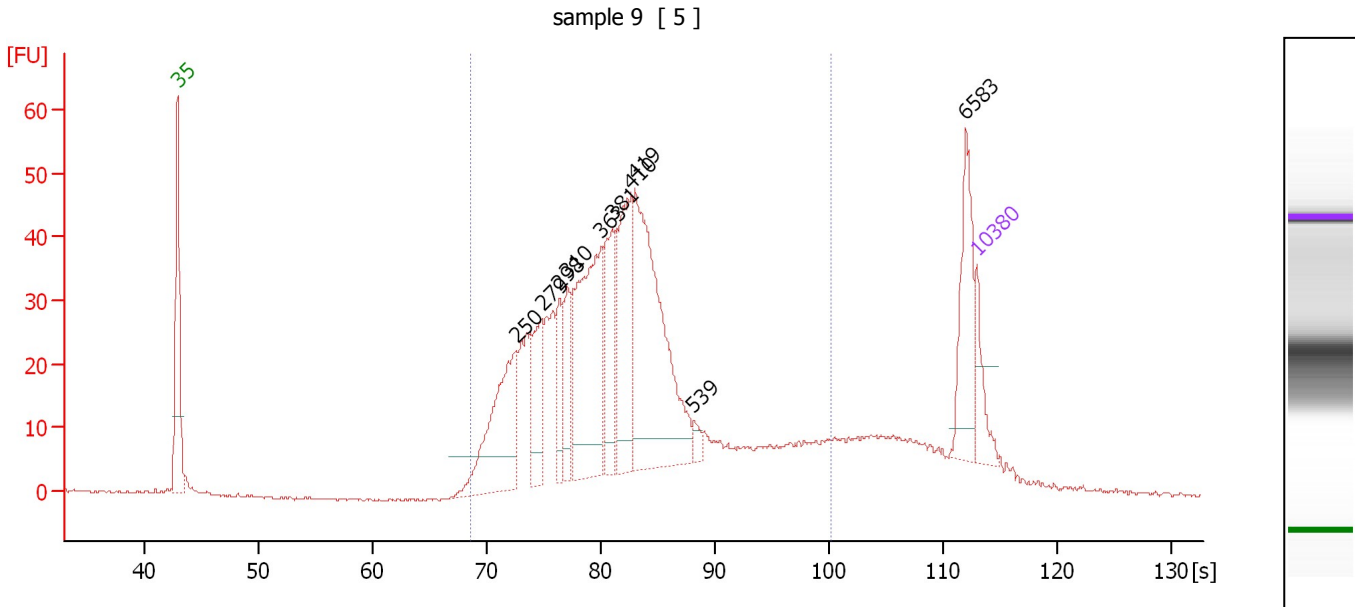
sample 8

From [bp]	Molarity [pmol/l]	Average Size [bp]	Conc. [pg/μl]	To [bp]	Corr. Area	% of Total	Size distribution in CV [%]	Color
200	7,359.4	412	1,728.30	1,000	1,368.9	86	38.4	■

Assay Class: High Sensitivity DNA Assay
 Data Path: C:\...ents and Settings\Bioanalyzer\2012-03-09\2012-03-09_002.xad

Created: 3/9/2012 10:16:25 AM
 Modified: 3/9/2012 10:52:02 AM

Electropherogram Summary Continued ...



Overall Results for sample 9 : sample 9

Number of peaks found: 10 Corr. Area 1: 811.6
 Noise: 0.2

Peak table for sample 9 : sample 9

Peak	Size [bp]	Conc. [pg/μl]	Molarity [pmol/l]	Observations
1	35	125.00	5,411.3	Lower Marker
2	250	473.46	2,865.7	
3	279	211.42	1,150.0	
4	298	129.24	656.3	
5	310	142.98	698.1	
6	363	599.64	2,500.3	
7	381	214.41	852.6	
8	410	356.26	1,315.8	
9	419	778.21	2,813.9	
10	539	25.77	72.4	
11	6,583	208.36	48.0	
12	10,380	75.00	10.9	Upper Marker

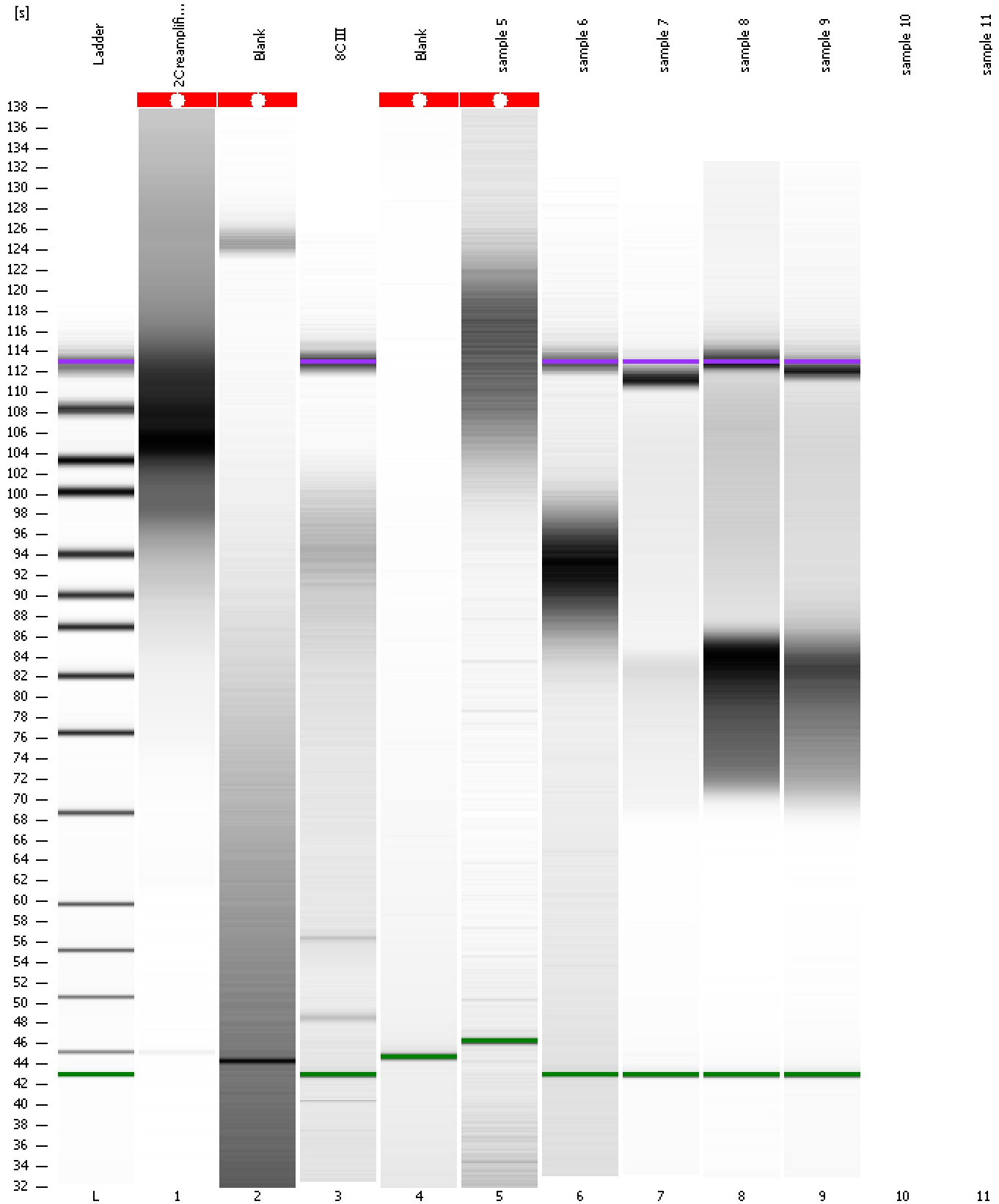
Region table for sample 9 : sample 9

From [bp]	Molarity [pmol/l]	Average Size [bp]	Conc. [pg/μl]	To [bp]	Corr. Area	% of Total	Size distribution in CV [%]	Color
200	17,878.0	415	4,186.02	1,000	811.6	82	39.1	Blue

Assay Class: High Sensitivity DNA Assay
Data Path: C:\...ents and Settings\Bioanalyzer\2012-03-09\2012-03-09_002.xad

Created: 3/9/2012 10:16:25 AM
Modified: 3/9/2012 10:52:02 AM

Gel Image



Assay Class: High Sensitivity DNA Assay
Data Path: C:\...ents and Settings\Bioanalyzer\2012-03-09\2012-03-09_002.xad

Created: 3/9/2012 10:16:25 AM
Modified: 3/9/2012 10:52:02 AM

Invalid Samples

Sample 10 has not been run, no results available.

Sample 11 has not been run, no results available.

Assay Class: High Sensitivity DNA Assay
 Data Path: C:\...ents and Settings\Bioanalyzer\2012-03-09\2012-03-09_002.xad

Created: 3/9/2012 10:16:25 AM
 Modified: 3/9/2012 10:52:02 AM

Run Logbook

Description	Number	Source	Category	Sub Category	Time	Time Zone	User	Host
Run ended on port 1 (Number of wells acquired: 10)		Instrument	Run		3/9/2012 10:51:59 AM	(GMT --08:00) Pacific Standard Time	UC Davis	D8XSMGH1
Run started on port 1 (File: C:\Documents and Settings\Bioanalyzer\2012-03-09\2012-03-09_002.xad)		Instrument	Run		3/9/2012 10:16:31 AM	(GMT --08:00) Pacific Standard Time	UC Davis	D8XSMGH1
Product Number : G2938B		Instrument	Run		3/9/2012 10:16:31 AM	(GMT --08:00) Pacific Standard Time	UC Davis	D8XSMGH1
Name :		Instrument	Run		3/9/2012 10:16:31 AM	(GMT --08:00) Pacific Standard Time	UC Davis	D8XSMGH1
Vendor : Agilent Technologies		Instrument	Run		3/9/2012 10:16:31 AM	(GMT --08:00) Pacific Standard Time	UC Davis	D8XSMGH1
Serial# : DE13701086		Instrument	Run		3/9/2012 10:16:31 AM	(GMT --08:00) Pacific Standard Time	UC Davis	D8XSMGH1
Firmware : C.01.069		Instrument	Run		3/9/2012 10:16:31 AM	(GMT --08:00) Pacific Standard Time	UC Davis	D8XSMGH1
Cartridge : Electrode		Instrument	Run		3/9/2012 10:16:31 AM	(GMT --08:00) Pacific Standard Time	UC Davis	D8XSMGH1