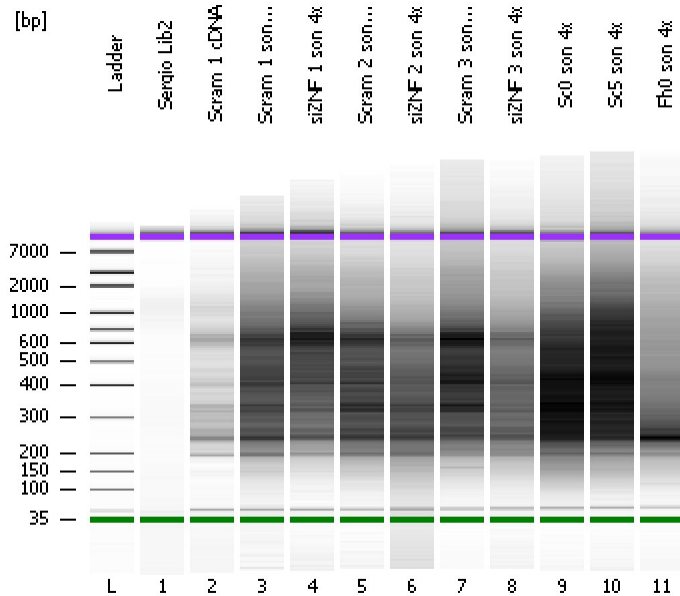


Assay Class: High Sensitivity DNA Assay  
Data Path: C:\...ents and Settings\Bioanalyzer\2012-03-09\2012-03-09\_004.xad

Created: 3/9/2012 12:07:46 PM  
Modified: 3/9/2012 4:16:55 PM

### Electrophoresis File Run Summary



#### Instrument Information:

Instrument Name: DE13701086      Firmware: C.01.069  
Serial#: DE13701086      Type: G2938B

#### Assay Information:

Assay Origin Path: C:\Program Files\Agilent\2100 bioanalyzer\2100 expert\assays\dsDNA\High Sensitivity DNA.xsy  
Assay Class: High Sensitivity DNA Assay  
Version: 1.03  
Assay Comments: Copyright © 2003-2010 Agilent Technologies

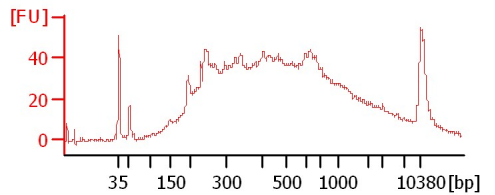
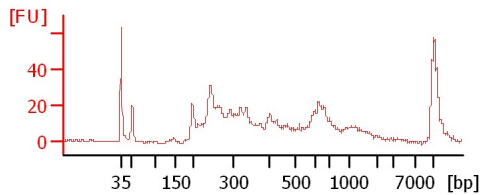
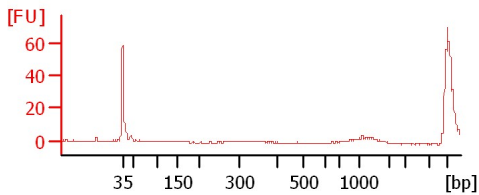
#### Chip Information:

Chip Lot #:   
Reagent Kit Lot #:   
Chip Comments:

Sergio Lib2

Scram 1 cDNA

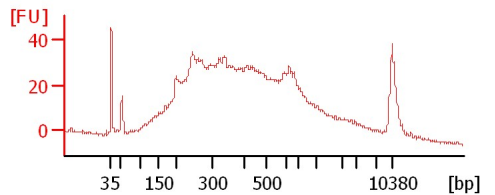
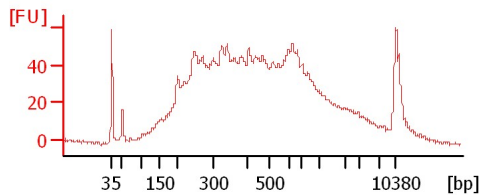
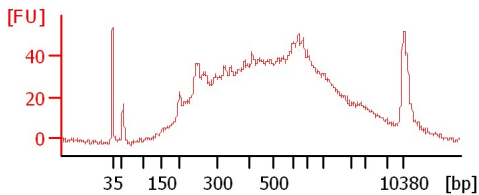
Scram 1 son 4x



siZNF 1 son 4x

Scram 2 son 4x

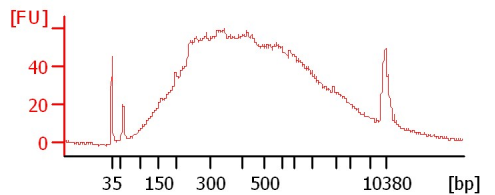
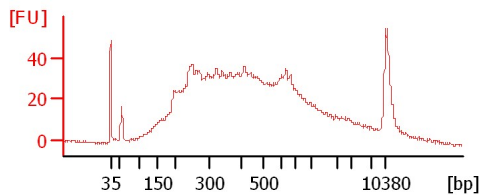
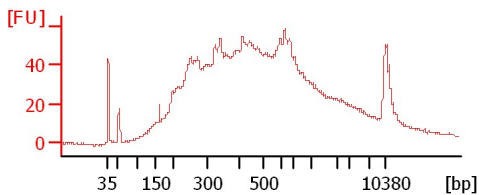
siZNF 2 son 4x



Scram 3 son 4x

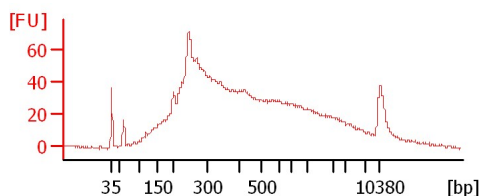
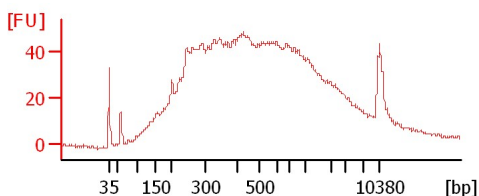
siZNF 3 son 4x

Sc0 son 4x



Sc5 son 4x

Fh0 son 4x



Assay Class: High Sensitivity DNA Assay  
 Data Path: C:\...ents and Settings\Bioanalyzer\2012-03-09\2012-03-09\_004.xad

Created: 3/9/2012 12:07:46 PM  
 Modified: 3/9/2012 4:16:55 PM

**Electrophoresis File Run Summary (Chip Summary)**

Sample Name	Sample Comment	Rest. Digest	Status	Observation	Result Label	Result Color
Sergio Lib2		<input type="checkbox"/>	✓			
Scram 1 cDNA		<input type="checkbox"/>	✓			
Scram 1 son 4x		<input type="checkbox"/>	✓			
siZNF 1 son 4x		<input type="checkbox"/>	✓			
Scram 2 son 4x		<input type="checkbox"/>	✓			
siZNF 2 son 4x		<input type="checkbox"/>	✓			
Scram 3 son 4x		<input type="checkbox"/>	✓			
siZNF 3 son 4x		<input type="checkbox"/>	✓			
Sc0 son 4x		<input type="checkbox"/>	✓			
Sc5 son 4x		<input type="checkbox"/>	✓			
Fh0 son 4x		<input type="checkbox"/>	✓			
Ladder		<input type="checkbox"/>	✓			

**Chip Lot #**

**Reagent Kit Lot #**

**Chip Comments :**

Assay Class: High Sensitivity DNA Assay  
Data Path: C:\...ents and Settings\Bioanalyzer\2012-03-09\2012-03-09\_004.xad

Created: 3/9/2012 12:07:46 PM  
Modified: 3/9/2012 4:16:55 PM

**Electrophoresis Assay Details**

**General Analysis Settings**

Number of Available Sample and Ladder Wells (Max.) : 12  
Minimum Visible Range [s] : 32  
Maximum Visible Range [s] : 138  
Start Analysis Time Range [s] : 33  
End Analysis Time Range [s] : 137.5  
Ladder Concentration [pg/μl] : 1950  
Uses Standard Area for Ladder Fragments  
Lower Marker Concentration [pg/μl] : 125  
Upper Marker Concentration [pg/μl] : 75  
Used Upper Marker for Quantitation  
Standard Curve Fit is Point to Point  
Show Data Aligned to Lower and Upper Marker

**Integrator Settings**

Integration Start Time [s] : 33.05  
Integration End Time [s] : 137  
Slope Threshold : 0.8  
Height Threshold [FU] : 5  
Area Threshold : 0.1  
Width Threshold [s] : 0.6  
Baseline Plateau [s] : 0.5

**Filter Settings**

Filter Width [s] : 0.5  
Polynomial Order : 4

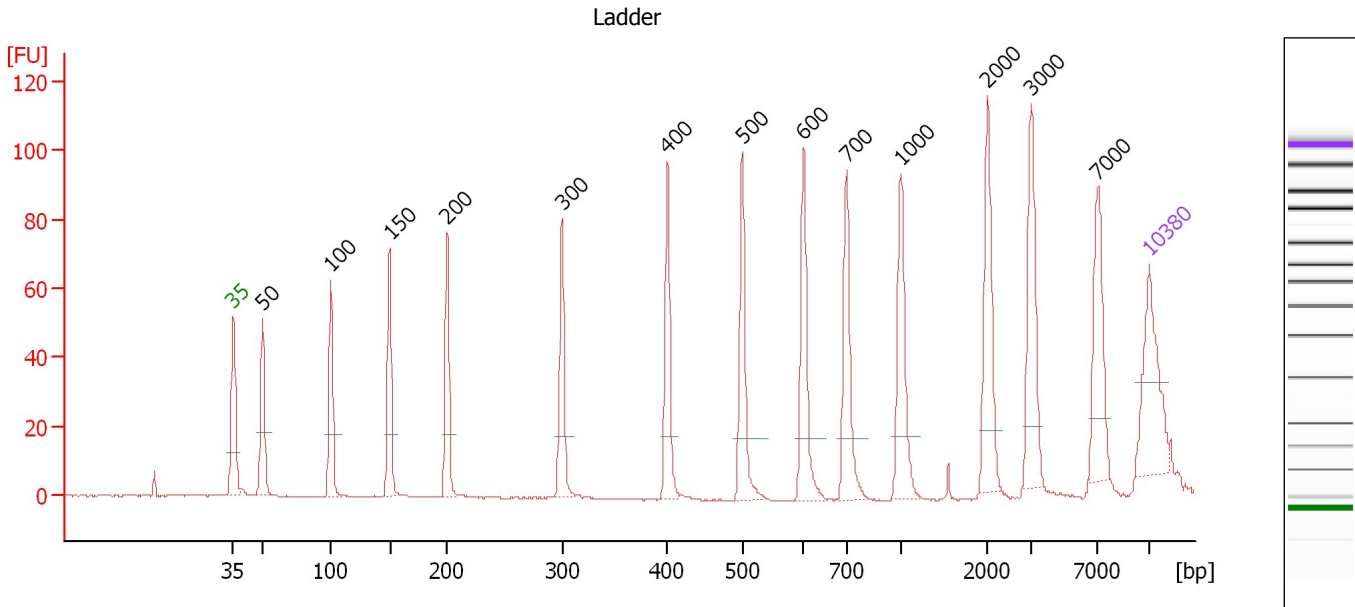
**Ladder**

Ladder Peak	Size	Area
1	35	160
2	50	210
3	100	208
4	150	221
5	200	242
6	300	270
7	400	305
8	500	306
9	600	336
10	700	321
11	1000	366
12	2000	413
13	3000	411
14	7000	400
15	10380	214

Assay Class: High Sensitivity DNA Assay  
 Data Path: C:\...ents and Settings\Bioanalyzer\2012-03-09\2012-03-09\_004.xad

Created: 3/9/2012 12:07:46 PM  
 Modified: 3/9/2012 4:16:55 PM

**Electropherogram Summary**



**Overall Results for Ladder**

Noise: 0.2

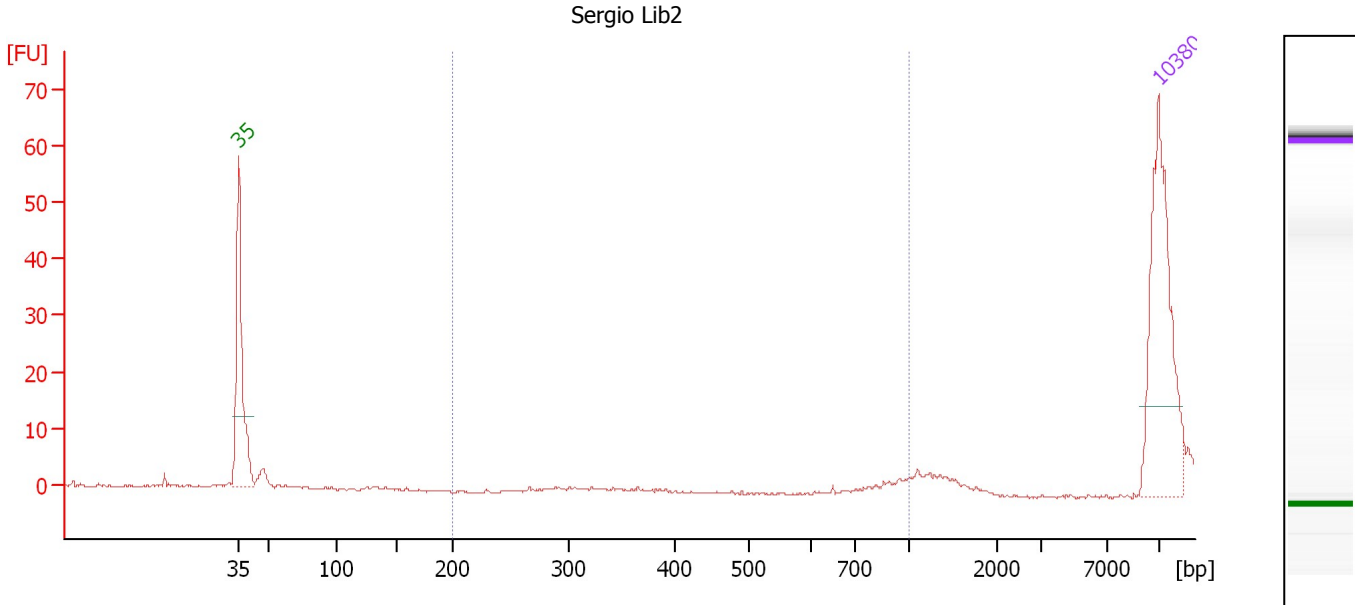
**Peak table for Ladder**

Peak	Size [bp]	Conc. [pg/μl]	Molarity [pmol/l]	Observations
1	35	125.00	5,411.3	Lower Marker
2	50	150.00	4,545.5	Ladder Peak
3	100	150.00	2,272.7	Ladder Peak
4	150	150.00	1,515.2	Ladder Peak
5	200	150.00	1,136.4	Ladder Peak
6	300	150.00	757.6	Ladder Peak
7	400	150.00	568.2	Ladder Peak
8	500	150.00	454.5	Ladder Peak
9	600	150.00	378.8	Ladder Peak
10	700	150.00	324.7	Ladder Peak
11	1,000	150.00	227.3	Ladder Peak
12	2,000	150.00	113.6	Ladder Peak
13	3,000	150.00	75.8	Ladder Peak
14	7,000	150.00	32.5	Ladder Peak
15	10,380	75.00	10.9	Upper Marker

Assay Class: High Sensitivity DNA Assay  
 Data Path: C:\...ents and Settings\Bioanalyzer\2012-03-09\2012-03-09\_004.xad

Created: 3/9/2012 12:07:46 PM  
 Modified: 3/9/2012 4:16:55 PM

**Electropherogram Summary Continued ...**



**Overall Results for sample 1 : Sergio Lib2**

Number of peaks found: 0      Corr. Area 1: 0.0  
 Noise: 0.2

**Peak table for sample 1 : Sergio Lib2**

Peak	Size [bp]	Conc. [pg/μl]	Molarity [pmol/l]	Observations
1	35	125.00	5,411.3	Lower Marker
2	10,380	75.00	10.9	Upper Marker

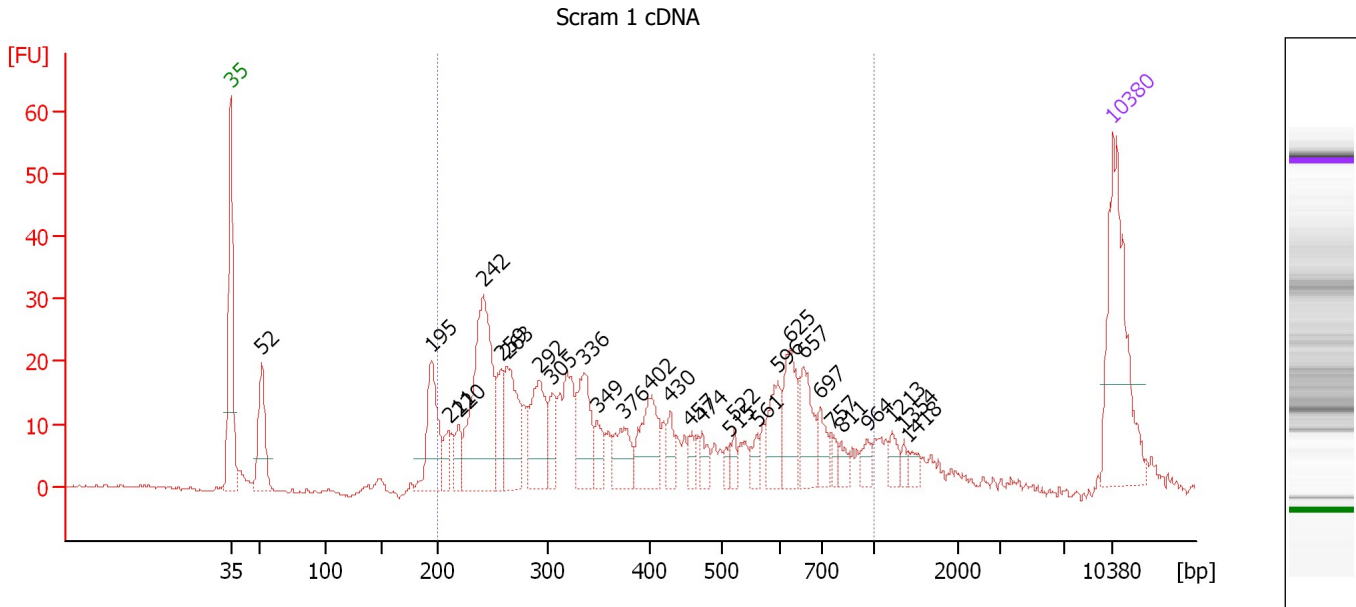
**Region table for sample 1 : Sergio Lib2**

From [bp]	Molarity [pmol/l]	Average Size [bp]	Conc. [pg/μl]	To [bp]	Corr. Area	% of Total	Size distribution in CV [%]	Color
200	0.0	0	0.00	1,000	0.0	0	0.0	Blue

Assay Class: High Sensitivity DNA Assay  
 Data Path: C:\...ents and Settings\Bioanalyzer\2012-03-09\2012-03-09\_004.xad

Created: 3/9/2012 12:07:46 PM  
 Modified: 3/9/2012 4:16:55 PM

**Electropherogram Summary Continued ...**



**Overall Results for sample 2 : Scram 1 cDNA**

Number of peaks found: 29      Corr. Area 1: 591.8  
 Noise: 0.2

**Peak table for sample 2 : Scram 1 cDNA**


Peak	Size [bp]	Conc. [pg/μl]	Molarity [pmol/l]	Observations
1	35	125.00	5,411.3	Lower Marker
2	52	54.62	1,590.8	
3	195	59.57	461.9	
4	211	15.47	111.1	
5	220	17.16	118.2	
6	242	136.73	855.3	
7	259	29.05	170.2	
8	263	55.72	320.4	
9	292	53.59	277.7	
10	305	21.82	108.4	
11	336	46.15	207.9	
12	349	15.52	67.3	
13	376	27.05	109.1	
14	402	41.30	155.8	
15	430	12.88	45.4	
16	457	8.60	28.5	
17	474	10.58	33.9	
18	515	5.50	16.2	
19	522	6.87	19.9	
20	561	8.29	22.4	
21	596	26.07	66.3	
22	625	35.02	84.9	
23	657	29.84	68.8	
24	697	15.07	32.8	
25	757	5.76	11.5	
26	811	6.79	12.7	

Assay Class: High Sensitivity DNA Assay  
 Data Path: C:\...ents and Settings\Bioanalyzer\2012-03-09\2012-03-09\_004.xad


Created: 3/9/2012 12:07:46 PM  
 Modified: 3/9/2012 4:16:55 PM

### Electropherogram Summary Continued ...

#### ... Peak table for sample 2 : Scram 1 cDNA

Peak	Size [bp]	Conc. [pg/μl]	Molarity [pmol/l]	Observations
27	964	8.16	12.8	
28	1,213	7.60	9.5	
29	1,354	3.99	4.5	
30	1,418	5.56	5.9	
31	 10,380	75.00	10.9	Upper Marker

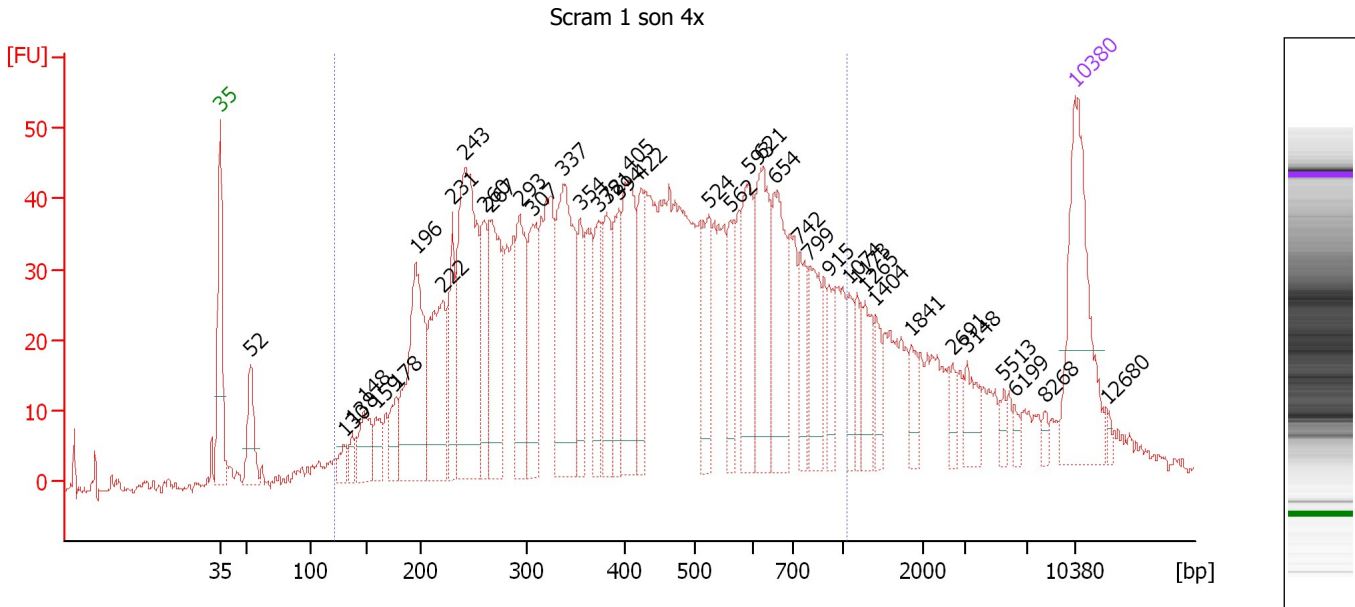
#### Region table for sample 2 : Scram 1 cDNA

From [bp]	Molarity [pmol/l]	Average Size [bp]	Conc. [pg/μl]	To [bp]	Corr. Area	% of Total	Size distribution in CV [%]	Color
200	3,623.4	425	803.59	1,000	591.8	83	43.1	

Assay Class: High Sensitivity DNA Assay  
 Data Path: C:\...ents and Settings\Bioanalyzer\2012-03-09\2012-03-09\_004.xad

Created: 3/9/2012 12:07:46 PM  
 Modified: 3/9/2012 4:16:55 PM

**Electropherogram Summary Continued ...**



**Overall Results for sample 3 : Scram 1 son 4x**

Number of peaks found: 40      Corr. Area 1: 1,542.0  
 Noise: 1.0

**Peak table for sample 3 : Scram 1 son 4x**

Peak	Size [bp]	Conc. [pg/μl]	Molarity [pmol/l]	Observations
1	35	125.00	5,411.3	Lower Marker
2	52	41.32	1,195.5	
3	130	11.64	135.4	
4	138	10.94	120.5	
5	148	35.61	363.9	
6	159	20.15	191.8	
7	178	25.13	213.3	
8	196	128.03	988.0	
9	222	89.16	607.9	
10	231	41.69	273.8	
11	243	179.26	1,119.3	
12	260	48.88	284.8	
13	267	92.99	527.5	
14	293	66.50	343.3	
15	307	63.96	315.7	
16	337	125.24	562.6	
17	354	35.35	151.3	
18	372	36.61	149.0	
19	381	47.38	188.4	
20	394	44.10	169.8	
21	405	80.74	301.8	
22	422	35.11	126.0	
23	524	44.12	127.7	
24	562	26.92	72.6	
25	593	57.26	146.4	
26	621	72.09	175.8	



Assay Class: High Sensitivity DNA Assay  
 Data Path: C:\...ents and Settings\Bioanalyzer\2012-03-09\2012-03-09\_004.xad


Created: 3/9/2012 12:07:46 PM  
 Modified: 3/9/2012 4:16:55 PM

**Electropherogram Summary Continued ...**

**... Peak table for sample 3 : Scram 1 son 4x**

Peak	Size [bp]	Conc. [pg/µl]	Molarity [pmol/l]	Observations
27	654	63.41	146.9	
28	742	28.98	59.2	
29	799	38.17	72.4	
30	915	17.63	29.2	
31	1,074	15.76	22.2	
32	1,173	15.15	19.6	
33	1,265	21.87	26.2	
34	1,404	13.93	15.0	
35	1,841	11.97	9.9	
36	2,691	6.87	3.9	
37	3,148	14.79	7.1	
38	5,513	5.06	1.4	
39	6,199	4.27	1.0	
40	8,268	3.41	0.6	
41	10,380	75.00	10.9	Upper Marker
42	12,680	0.00	0.0	

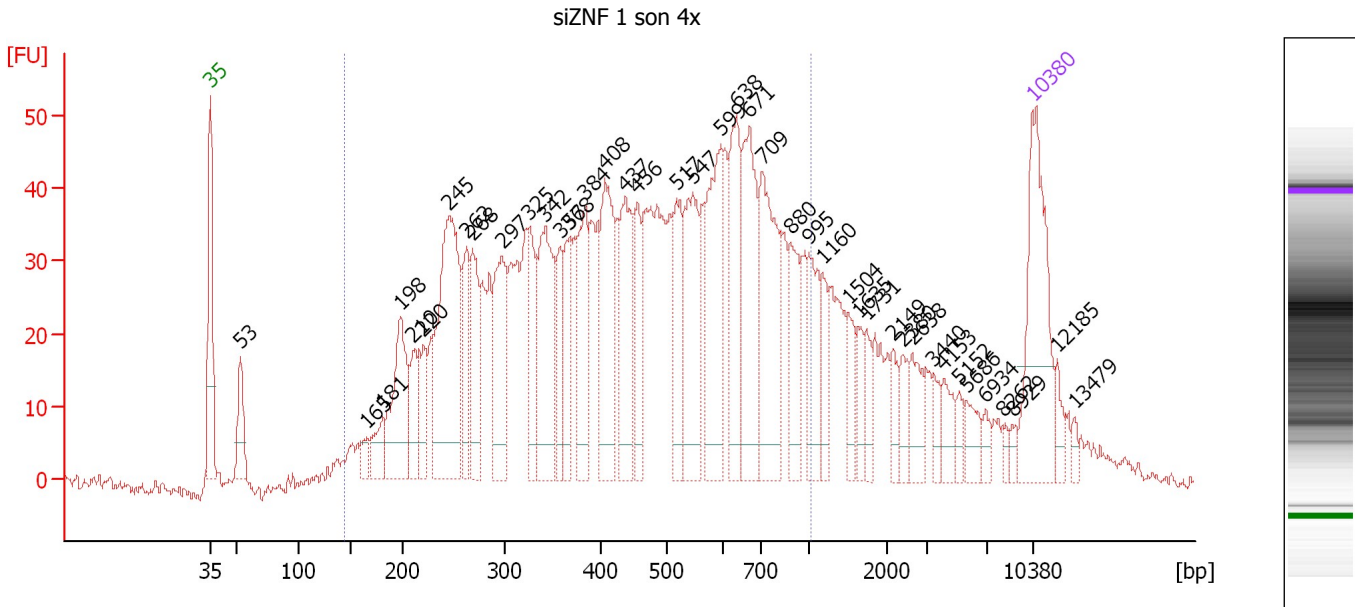
**Region table for sample 3 : Scram 1 son 4x**

From [bp]	Molarity [pmol/l]	Average Size [bp]	Conc. [pg/µl]	To [bp]	Corr. Area	% of Total	Size distribution in CV [%]	Color
121	8,288.5	452	1,911.27	1,046	1,542.0	86	42.2	

Assay Class: High Sensitivity DNA Assay  
 Data Path: C:\...ents and Settings\Bioanalyzer\2012-03-09\2012-03-09\_004.xad

Created: 3/9/2012 12:07:46 PM  
 Modified: 3/9/2012 4:16:55 PM

**Electropherogram Summary Continued ...**



**Overall Results for sample 4 : siZNF 1 son 4x**

Number of peaks found: 42      Corr. Area 1: 1,654.5  
 Noise: 1.0

**Peak table for sample 4 : siZNF 1 son 4x**


Peak	Size [bp]	Conc. [pg/μl]	Molarity [pmol/l]	Observations
1	35	125.00	5,411.3	Lower Marker
2	53	35.94	1,029.7	
3	165	10.70	98.2	
4	181	23.47	195.9	
5	198	82.66	632.5	
6	210	35.51	255.7	
7	220	30.11	207.2	
8	245	165.66	1,023.9	
9	262	43.72	252.6	
10	268	53.90	304.2	
11	297	76.25	389.1	
12	325	48.83	227.4	
13	342	94.85	420.6	
14	357	32.92	139.5	
15	368	41.22	169.9	
16	384	61.74	243.3	
17	408	88.95	330.7	
18	437	69.26	240.1	
19	456	39.00	129.6	
20	517	44.77	131.1	
21	547	76.87	212.8	
22	599	84.26	213.3	
23	638	64.31	152.8	
24	671	87.02	196.5	
25	709	95.15	203.2	
26	880	36.97	63.7	

Assay Class: High Sensitivity DNA Assay  
 Data Path: C:\...ents and Settings\Bioanalyzer\2012-03-09\2012-03-09\_004.xad


Created: 3/9/2012 12:07:46 PM  
 Modified: 3/9/2012 4:16:55 PM

**Electropherogram Summary Continued ...**

**... Peak table for sample 4 : siZNF 1 son 4x**

Peak	Size [bp]	Conc. [pg/µl]	Molarity [pmol/l]	Observations
27	995	36.61	55.8	
28	1,160	18.52	24.2	
29	1,504	15.93	16.0	
30	1,635	12.76	11.8	
31	1,731	12.77	11.2	
32	2,149	11.06	7.8	
33	2,380	11.60	7.4	
34	2,638	18.10	10.4	
35	3,440	8.37	3.7	
36	4,153	14.03	5.1	
37	5,152	6.89	2.0	
38	5,686	12.14	3.2	
39	6,934	5.62	1.2	
40	8,262	3.69	0.7	
41	8,929	4.16	0.7	
42	 10,380	75.00	10.9	Upper Marker
43	12,185	0.00	0.0	
44	13,479	0.00	0.0	

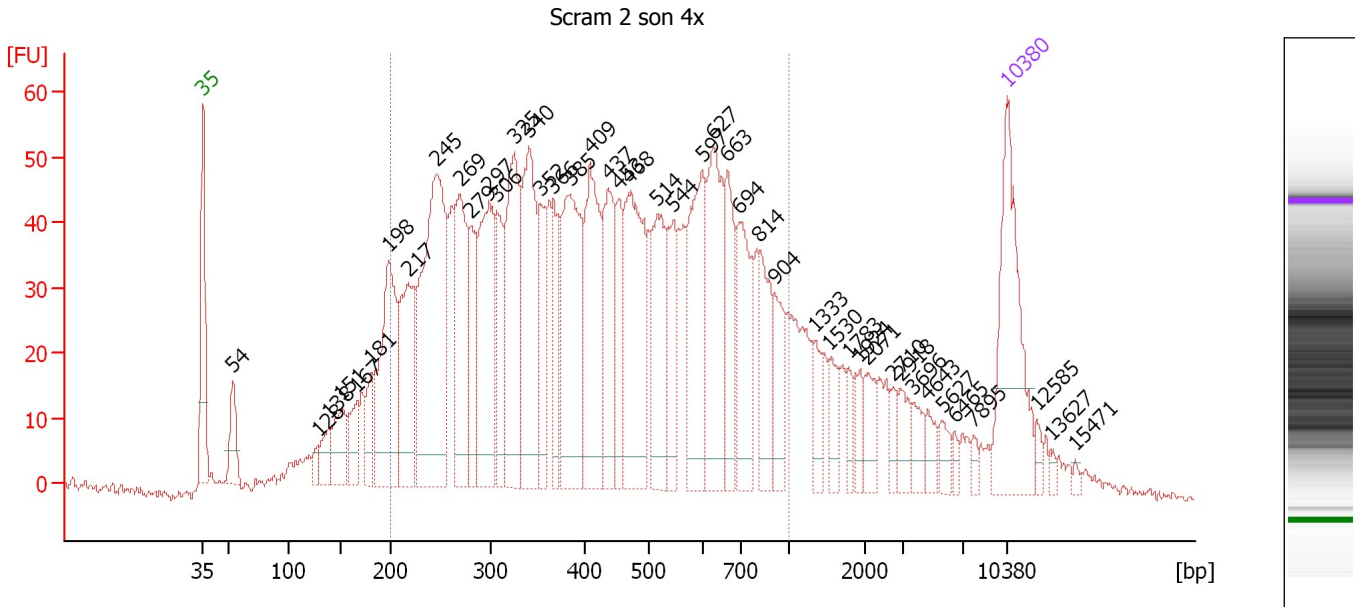
**Region table for sample 4 : siZNF 1 son 4x**

From [bp]	Molarity [pmol/l]	Average Size [bp]	Conc. [pg/µl]	To [bp]	Corr. Area	% of Total	Size distribution in CV [%]	Color
144	8,731.1	472	2,076.11	1,027	1,654.5	82	41.6	

Assay Class: High Sensitivity DNA Assay  
 Data Path: C:\...ents and Settings\Bioanalyzer\2012-03-09\2012-03-09\_004.xad

Created: 3/9/2012 12:07:46 PM  
 Modified: 3/9/2012 4:16:55 PM

**Electropherogram Summary Continued ...**



**Overall Results for sample 5 : Scram 2 son 4x**

Number of peaks found: 45                      Corr. Area 1: 1,948.2  
 Noise: 0.8

**Peak table for sample 5 : Scram 2 son 4x**

Peak	Size [bp]	Conc. [pg/μl]	Molarity [pmol/l]	Observations
1	35	125.00	5,411.3	Lower Marker
2	54	32.51	914.5	
3	128	9.16	108.4	
4	138	20.90	228.7	
5	151	36.58	367.3	
6	167	25.73	233.9	
7	181	25.96	217.4	
8	198	127.98	980.3	
9	217	88.48	618.2	
10	245	214.89	1,326.6	
11	269	95.60	537.9	
12	279	46.36	251.5	
13	297	110.74	564.3	
14	306	49.00	242.8	
15	325	112.67	525.7	
16	340	107.99	480.9	
17	352	45.66	196.4	
18	366	40.90	169.3	
19	385	116.44	458.8	
20	409	98.79	365.9	
21	437	68.06	236.2	
22	453	39.90	133.5	
23	468	115.77	374.5	
24	514	65.77	193.9	
25	544	46.40	129.3	
26	597	77.96	197.8	

Assay Class: High Sensitivity DNA Assay  
 Data Path: C:\...ents and Settings\Bioanalyzer\2012-03-09\2012-03-09\_004.xad


Created: 3/9/2012 12:07:46 PM  
 Modified: 3/9/2012 4:16:55 PM

**Electropherogram Summary Continued ...**

**... Peak table for sample 5 : Scram 2 son 4x**

Peak	Size [bp]	Conc. [pg/µl]	Molarity [pmol/l]	Observations
27	627	87.30	211.0	
28	663	48.18	110.0	
29	694	63.08	137.7	
30	814	41.15	76.6	
31	904	27.32	45.8	
32	1,333	14.15	16.1	
33	1,530	16.02	15.9	
34	1,783	8.85	7.5	
35	1,924	11.03	8.7	
36	2,071	14.95	10.9	
37	2,710	7.64	4.3	
38	2,918	12.81	6.7	
39	3,696	10.70	4.4	
40	4,643	9.31	3.0	
41	5,627	8.59	2.3	
42	6,465	3.82	0.9	
43	7,895	4.02	0.8	
44	10,380	75.00	10.9	Upper Marker
45	12,585	0.00	0.0	
46	13,627	0.00	0.0	
47	15,471	0.00	0.0	

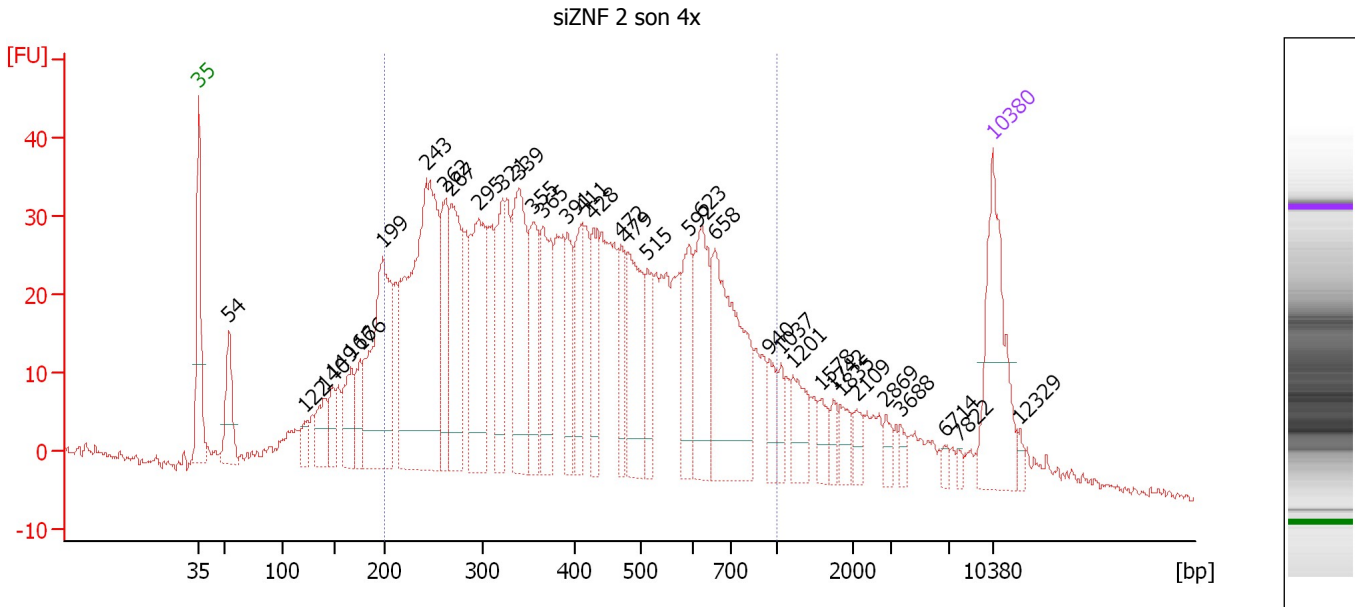
**Region table for sample 5 : Scram 2 son 4x**

From [bp]	Molarity [pmol/l]	Average Size [bp]	Conc. [pg/µl]	To [bp]	Corr. Area	% of Total	Size distribution in CV [%]	Color
200	8,766.9	451	2,087.59	1,000	1,948.2	78	40.5	

Assay Class: High Sensitivity DNA Assay  
 Data Path: C:\...ents and Settings\Bioanalyzer\2012-03-09\2012-03-09\_004.xad

Created: 3/9/2012 12:07:46 PM  
 Modified: 3/9/2012 4:16:55 PM

**Electropherogram Summary Continued ...**



**Overall Results for sample 6 : siZNF 2 son 4x**

Number of peaks found: 36                      Corr. Area 1: 1,316.5  
 Noise: 0.5

**Peak table for sample 6 : siZNF 2 son 4x**

Peak	Size [bp]	Conc. [pg/μl]	Molarity [pmol/l]	Observations
1	35	125.00	5,411.3	Lower Marker
2	54	56.44	1,591.3	
3	122	15.94	198.5	
4	140	35.22	381.2	
5	149	24.56	249.9	
6	167	47.01	427.8	
7	176	34.39	295.9	
8	199	177.14	1,351.9	
9	243	318.60	1,990.6	
10	262	79.55	460.4	
11	267	110.00	623.8	
12	295	117.38	602.8	
13	321	67.93	320.8	
14	339	111.58	498.9	
15	355	66.09	282.4	
16	365	77.64	322.7	
17	391	43.34	167.8	
18	411	52.39	193.2	
19	428	48.75	172.5	
20	472	33.86	108.8	
21	479	84.68	267.8	
22	515	33.56	98.8	
23	592	47.85	122.5	
24	623	76.97	187.3	
25	658	136.56	314.3	
26	940	17.64	28.4	

Assay Class: High Sensitivity DNA Assay  
 Data Path: C:\...ents and Settings\Bioanalyzer\2012-03-09\2012-03-09\_004.xad


Created: 3/9/2012 12:07:46 PM  
 Modified: 3/9/2012 4:16:55 PM

**Electropherogram Summary Continued ...**

**... Peak table for sample 6 : siZNF 2 son 4x**

Peak	Size [bp]	Conc. [pg/µl]	Molarity [pmol/l]	Observations
27	1,037	11.70	17.1	
28	1,201	27.34	34.5	
29	1,578	12.82	12.3	
30	1,742	8.44	7.3	
31	1,835	12.00	9.9	
32	2,109	8.81	6.3	
33	2,869	7.94	4.2	
34	3,688	5.75	2.4	
35	6,714	4.40	1.0	
36	7,822	3.14	0.6	
37	10,380	75.00	10.9	Upper Marker
38	12,329	0.00	0.0	

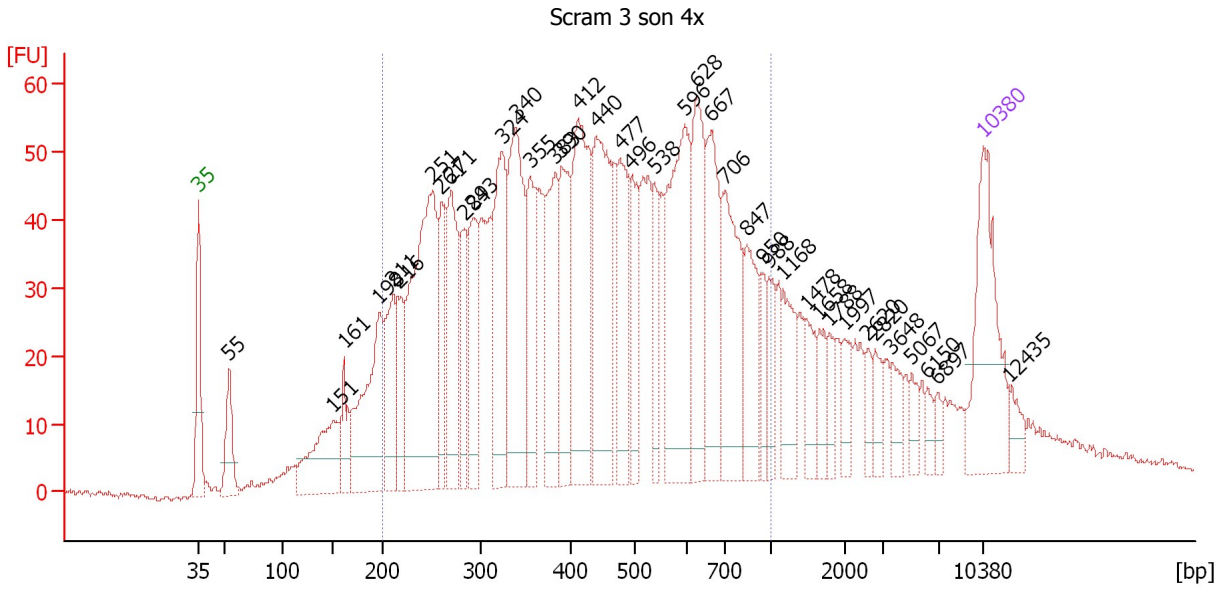
**Region table for sample 6 : siZNF 2 son 4x**

From [bp]	Molarity [pmol/l]	Average Size [bp]	Conc. [pg/µl]	To [bp]	Corr. Area	% of Total	Size distribution in CV [%]	Color
200	9,145.3	430	2,102.13	1,000	1,316.5	79	40.4	

Assay Class: High Sensitivity DNA Assay  
 Data Path: C:\...ents and Settings\Bioanalyzer\2012-03-09\2012-03-09\_004.xad

Created: 3/9/2012 12:07:46 PM  
 Modified: 3/9/2012 4:16:55 PM

**Electropherogram Summary Continued ...**



**Overall Results for sample 7 : Scram 3 son 4x**

Number of peaks found: 40                      Corr. Area 1: 1,926.2  
 Noise: 0.5

**Peak table for sample 7 : Scram 3 son 4x**

Peak	Size [bp]	Conc. [pg/µl]	Molarity [pmol/l]	Observations
1	35	125.00	5,411.3	Lower Marker
2	55	44.61	1,240.1	
3	151	85.60	861.6	
4	161	31.68	297.5	
5	198	122.17	937.0	
6	211	69.43	498.3	
7	216	43.67	306.4	
8	251	233.11	1,405.6	
9	261	57.18	332.6	
10	271	90.46	506.1	
11	284	49.40	263.7	
12	293	67.88	350.9	
13	324	108.70	507.8	
14	340	138.20	616.5	
15	355	69.90	298.3	
16	383	85.05	336.2	
17	390	77.06	299.6	
18	412	135.15	496.8	
19	440	132.03	455.0	
20	477	71.73	227.7	
21	496	43.70	133.6	
22	538	34.97	98.4	
23	596	132.99	338.0	
24	628	81.77	197.4	
25	667	79.06	179.7	
26	706	89.13	191.3	



Assay Class: High Sensitivity DNA Assay  
 Data Path: C:\...ents and Settings\Bioanalyzer\2012-03-09\2012-03-09\_004.xad


Created: 3/9/2012 12:07:46 PM  
 Modified: 3/9/2012 4:16:55 PM

**Electropherogram Summary Continued ...**

**... Peak table for sample 7 : Scram 3 son 4x**

Peak	Size [bp]	Conc. [pg/µl]	Molarity [pmol/l]	Observations
27	847	50.99	91.2	
28	950	19.18	30.6	
29	988	22.47	34.5	
30	1,168	34.66	44.9	
31	1,478	20.35	20.9	
32	1,658	16.18	14.8	
33	1,788	12.00	10.2	
34	1,997	15.88	12.0	
35	2,620	9.97	5.8	
36	2,820	12.94	7.0	
37	3,648	13.90	5.8	
38	5,067	10.02	3.0	
39	6,150	7.25	1.8	
40	6,897	6.51	1.4	
41	10,380	75.00	10.9	Upper Marker
42	12,435	0.00	0.0	

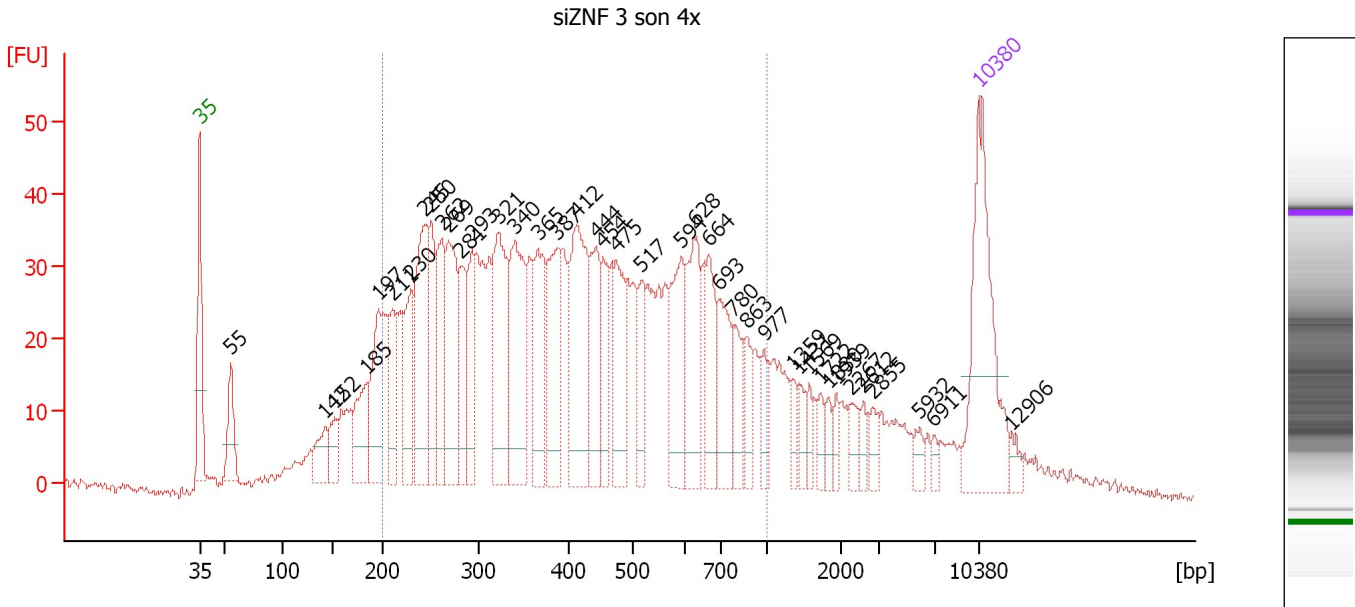
**Region table for sample 7 : Scram 3 son 4x**

From [bp]	Molarity [pmol/l]	Average Size [bp]	Conc. [pg/µl]	To [bp]	Corr. Area	% of Total	Size distribution in CV [%]	Color
200	9,273.2	458	2,260.08	1,000	1,926.2	78	39.4	

Assay Class: High Sensitivity DNA Assay  
 Data Path: C:\...ents and Settings\Bioanalyzer\2012-03-09\2012-03-09\_004.xad

Created: 3/9/2012 12:07:46 PM  
 Modified: 3/9/2012 4:16:55 PM

**Electropherogram Summary Continued ...**



**Overall Results for sample 8 : siZNF 3 son 4x**

Number of peaks found: 41      Corr. Area 1: 1,386.4  
 Noise: 0.7

**Peak table for sample 8 : siZNF 3 son 4x**

Peak	Size [bp]	Conc. [pg/μl]	Molarity [pmol/l]	Observations
1	35	125.00	5,411.3	Lower Marker
2	55	35.19	966.7	
3	142	23.12	245.9	
4	152	20.93	208.5	
5	185	41.98	344.3	
6	197	52.48	403.1	
7	211	36.10	258.6	
8	230	47.50	312.8	
9	245	88.76	549.2	
10	250	51.35	310.8	
11	262	54.09	312.4	
12	269	75.86	427.4	
13	281	38.48	207.5	
14	293	39.11	202.3	
15	321	84.91	400.9	
16	340	81.78	364.5	
17	365	52.50	217.7	
18	387	61.81	242.1	
19	412	90.40	332.7	
20	444	43.54	148.7	
21	454	30.99	103.5	
22	475	45.22	144.4	
23	517	24.58	72.0	
24	594	53.17	135.6	
25	628	54.18	130.8	
26	664	37.72	86.1	

Assay Class: High Sensitivity DNA Assay  
 Data Path: C:\...ents and Settings\Bioanalyzer\2012-03-09\2012-03-09\_004.xad


Created: 3/9/2012 12:07:46 PM  
 Modified: 3/9/2012 4:16:55 PM

**Electropherogram Summary Continued ...**

**... Peak table for sample 8 : siZNF 3 son 4x**

Peak	Size [bp]	Conc. [pg/μl]	Molarity [pmol/l]	Observations
27	693	38.61	84.4	
28	780	19.75	38.4	
29	863	15.40	27.0	
30	977	12.18	18.9	
31	1,359	8.46	9.4	
32	1,431	9.10	9.6	
33	1,569	7.32	7.1	
34	1,722	7.24	6.4	
35	1,830	6.70	5.5	
36	1,939	6.22	4.9	
37	2,267	9.47	6.3	
38	2,612	6.08	3.5	
39	2,855	7.03	3.7	
40	5,932	6.24	1.6	
41	6,911	3.49	0.8	
42	10,380	75.00	10.9	Upper Marker
43	12,906	0.00	0.0	

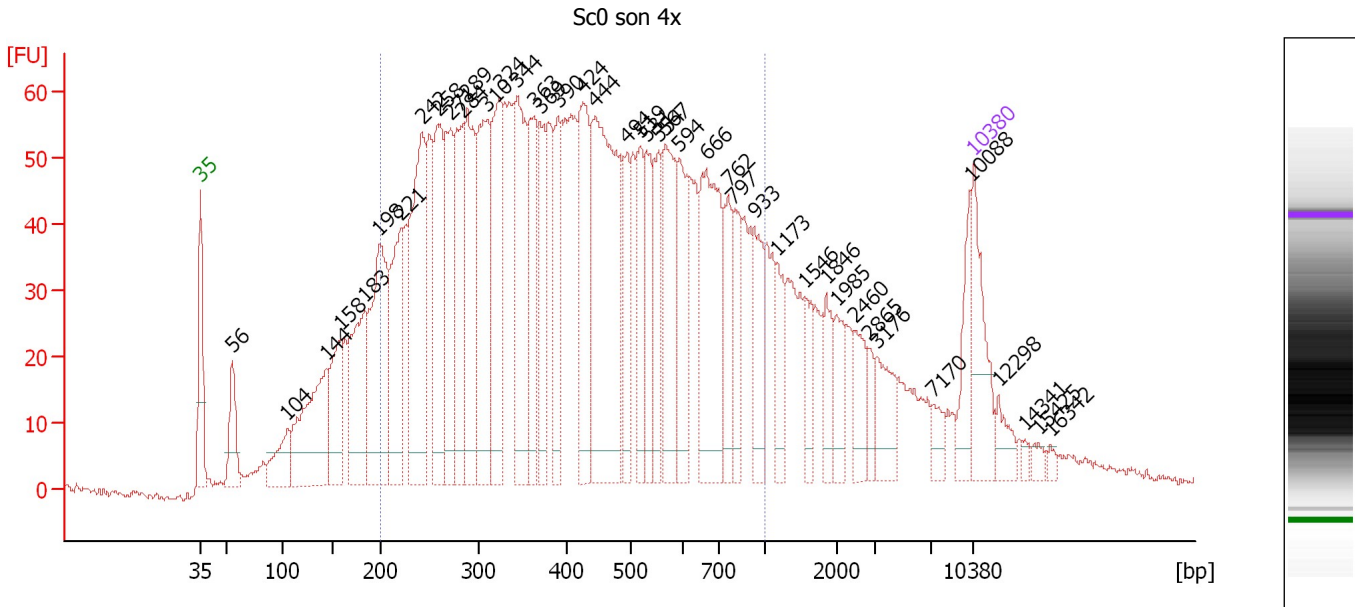
**Region table for sample 8 : siZNF 3 son 4x**

From [bp]	Molarity [pmol/l]	Average Size [bp]	Conc. [pg/μl]	To [bp]	Corr. Area	% of Total	Size distribution in CV [%]	Color
200	6,862.0	441	1,603.17	1,000	1,386.4	77	40.8	

Assay Class: High Sensitivity DNA Assay  
 Data Path: C:\...ents and Settings\Bioanalyzer\2012-03-09\2012-03-09\_004.xad

Created: 3/9/2012 12:07:46 PM  
 Modified: 3/9/2012 4:16:55 PM

**Electropherogram Summary Continued ...**



**Overall Results for sample 9 : Sc0 son 4x**

Number of peaks found: 43      Corr. Area 1: 2,298.3  
 Noise: 0.7

**Peak table for sample 9 : Sc0 son 4x**

Peak	Size [bp]	Conc. [pg/μl]	Molarity [pmol/l]	Observations
1	35	125.00	5,411.3	Lower Marker
2	56	79.79	2,166.2	
3	104	69.14	1,007.2	
4	144	219.20	2,308.9	
5	158	123.27	1,182.3	
6	183	181.06	1,497.5	
7	198	257.16	1,967.8	
8	221	179.77	1,234.8	
9	242	290.71	1,823.9	
10	258	186.79	1,096.9	
11	271	162.21	906.1	
12	284	158.86	847.8	
13	289	203.33	1,066.5	
14	310	226.60	1,107.4	
15	324	194.94	910.5	
16	344	209.17	922.6	
17	363	135.02	564.1	
18	369	94.55	388.0	
19	390	104.76	407.4	
20	424	166.27	593.9	
21	444	348.72	1,188.7	
22	494	75.01	229.9	
23	519	84.79	247.6	
24	531	87.58	249.8	
25	554	74.08	202.6	
26	567	141.18	377.1	

Assay Class: High Sensitivity DNA Assay  
 Data Path: C:\...ents and Settings\Bioanalyzer\2012-03-09\2012-03-09\_004.xad


Created: 3/9/2012 12:07:46 PM  
 Modified: 3/9/2012 4:16:55 PM

**Electropherogram Summary Continued ...**

**... Peak table for sample 9 : Sc0 son 4x**

Peak	Size [bp]	Conc. [pg/µl]	Molarity [pmol/l]	Observations
27	594	100.60	256.6	
28	666	203.44	462.7	
29	762	69.61	138.4	
30	797	61.97	117.8	
31	933	68.13	110.7	
32	1,173	46.48	60.0	
33	1,546	37.35	36.6	
34	1,846	35.66	29.3	
35	1,985	36.25	27.7	
36	2,460	40.84	25.1	
37	2,865	17.54	9.3	
38	3,176	46.95	22.4	
39	7,170	18.98	4.0	
40	10,088	47.80	7.2	
41	10,380	75.00	10.9	Upper Marker
42	12,298	0.00	0.0	
43	14,341	0.00	0.0	
44	15,425	0.00	0.0	
45	16,342	0.00	0.0	

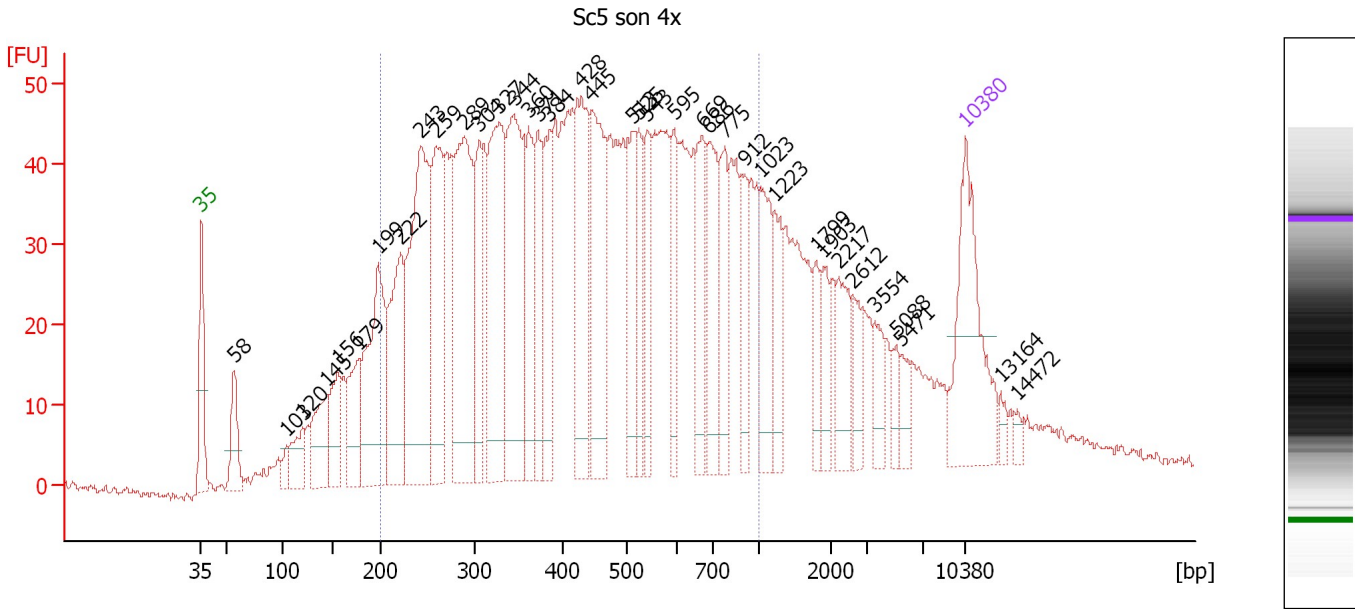
**Region table for sample 9 : Sc0 son 4x**

From [bp]	Molarity [pmol/l]	Average Size [bp]	Conc. [pg/µl]	To [bp]	Corr. Area	% of Total	Size distribution in CV [%]	Color
200	20,290.1	444	4,791.45	1,000	2,298.3	73	40.9	

Assay Class: High Sensitivity DNA Assay  
 Data Path: C:\...ents and Settings\Bioanalyzer\2012-03-09\2012-03-09\_004.xad

Created: 3/9/2012 12:07:46 PM  
 Modified: 3/9/2012 4:16:55 PM

**Electropherogram Summary Continued ...**



**Overall Results for sample 10 : Sc5 son 4x**

Number of peaks found: 38      Corr. Area 1: 1,794.6  
 Noise: 0.7

**Peak table for sample 10 : Sc5 son 4x**

Peak	Size [bp]	Conc. [pg/μl]	Molarity [pmol/l]	Observations
1	35	125.00	5,411.3	Lower Marker
2	58	40.77	1,073.6	
3	103	10.49	153.7	
4	120	30.60	387.1	
5	145	52.49	549.3	
6	156	43.06	417.3	
7	179	46.69	396.2	
8	199	133.08	1,015.7	
9	222	100.74	687.8	
10	243	200.39	1,249.0	
11	259	118.74	693.9	
12	289	163.43	855.8	
13	304	57.86	288.2	
14	327	139.64	646.7	
15	344	152.19	671.3	
16	360	63.60	267.8	
17	371	54.54	222.9	
18	384	60.26	237.8	
19	428	101.85	360.6	
20	445	109.18	371.7	
21	513	55.58	164.1	
22	525	42.69	123.2	
23	543	41.46	115.8	
24	595	35.50	90.5	
25	669	47.99	108.6	
26	686	54.85	121.2	

Assay Class: High Sensitivity DNA Assay  
 Data Path: C:\...ents and Settings\Bioanalyzer\2012-03-09\2012-03-09\_004.xad

Created: 3/9/2012 12:07:46 PM  
 Modified: 3/9/2012 4:16:55 PM

**Electropherogram Summary Continued ...**

**... Peak table for sample 10 : Sc5 son 4x**

Peak	Size [bp]	Conc. [pg/μl]	Molarity [pmol/l]	Observations
27	775	41.51	81.2	
28	912	31.54	52.4	
29	1,023	46.16	68.4	
30	1,223	31.18	38.6	
31	1,799	17.74	14.9	
32	1,903	19.20	15.3	
33	2,217	30.53	20.9	
34	2,612	16.57	9.6	
35	3,554	16.80	7.2	
36	5,088	10.19	3.0	
37	5,471	11.15	3.1	
38	10,380	75.00	10.9	Upper Marker
39	13,164	0.00	0.0	
40	14,472	0.00	0.0	

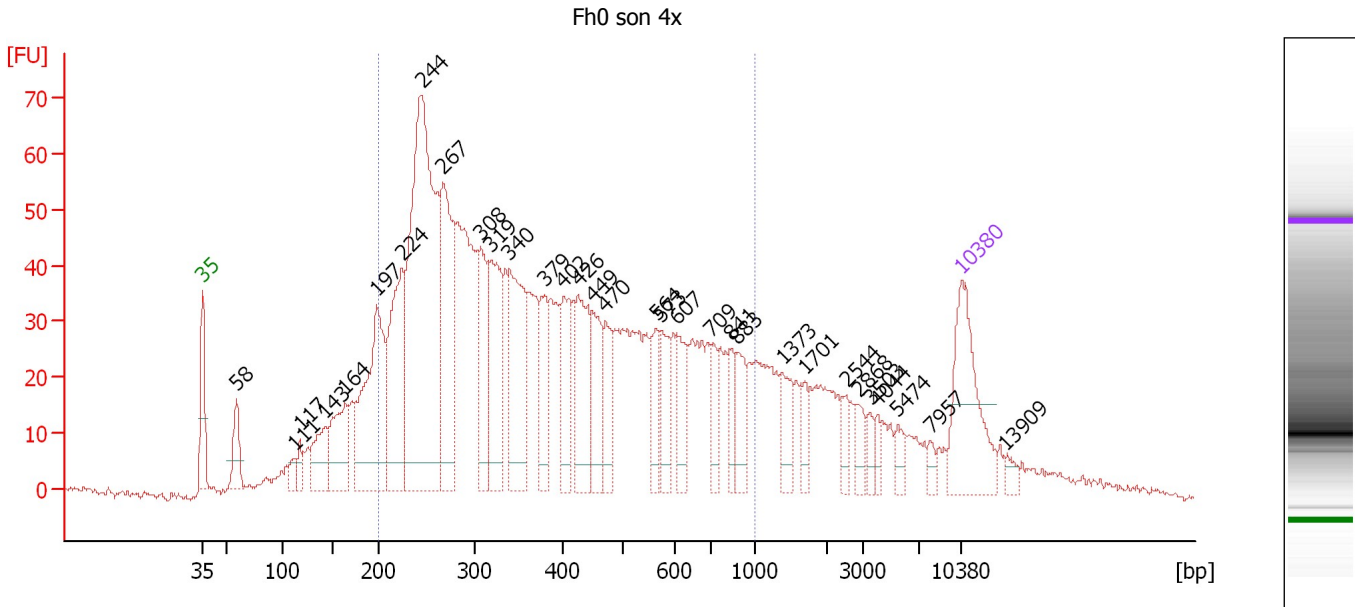
**Region table for sample 10 : Sc5 son 4x**

From [bp]	Molarity [pmol/l]	Average Size [bp]	Conc. [pg/μl]	To [bp]	Corr. Area	% of Total	Size distribution in CV [%]	Color
200	9,720.5	460	2,362.40	1,000	1,794.6	75	40.8	<span style="color: blue;">■</span>

Assay Class: High Sensitivity DNA Assay  
 Data Path: C:\...ents and Settings\Bioanalyzer\2012-03-09\2012-03-09\_004.xad

Created: 3/9/2012 12:07:46 PM  
 Modified: 3/9/2012 4:16:55 PM

**Electropherogram Summary Continued ...**



**Overall Results for sample 11 : Fh0 son 4x**

Number of peaks found: 32                      Corr. Area 1: 1,654.0  
 Noise: 0.8

**Peak table for sample 11 : Fh0 son 4x**

Peak	Size [bp]	Conc. [pg/μl]	Molarity [pmol/l]	Observations
1	35	125.00	5,411.3	Lower Marker
2	58	39.40	1,025.1	
3	111	12.57	172.1	
4	117	15.14	196.5	
5	143	51.15	541.7	
6	164	70.97	655.0	
7	197	177.03	1,360.6	
8	224	147.77	1,001.6	
9	244	426.03	2,642.1	
10	267	151.92	862.9	
11	308	75.28	370.5	
12	319	112.87	536.4	
13	340	123.51	550.2	
14	379	49.15	196.4	
15	402	60.15	226.5	
16	426	79.01	281.2	
17	449	50.33	169.8	
18	470	38.21	123.2	
19	564	26.96	72.4	
20	573	33.68	89.0	
21	607	36.59	91.3	
22	709	23.59	50.4	
23	841	21.03	37.9	
24	883	29.60	50.8	
25	1,373	27.04	29.8	
26	1,701	15.65	13.9	



Assay Class: High Sensitivity DNA Assay  
 Data Path: C:\...ents and Settings\Bioanalyzer\2012-03-09\2012-03-09\_004.xad


Created: 3/9/2012 12:07:46 PM  
 Modified: 3/9/2012 4:16:55 PM

### Electropherogram Summary Continued ...

#### ... Peak table for sample 11 : Fh0 son 4x

Peak	Size [bp]	Conc. [pg/μl]	Molarity [pmol/l]	Observations
27	2,544	12.95	7.7	
28	2,868	13.42	7.1	
29	3,503	9.17	4.0	
30	4,044	7.61	2.9	
31	5,474	9.80	2.7	
32	7,957	6.15	1.2	
33	10,380	75.00	10.9	Upper Marker
34	13,909	0.00	0.0	

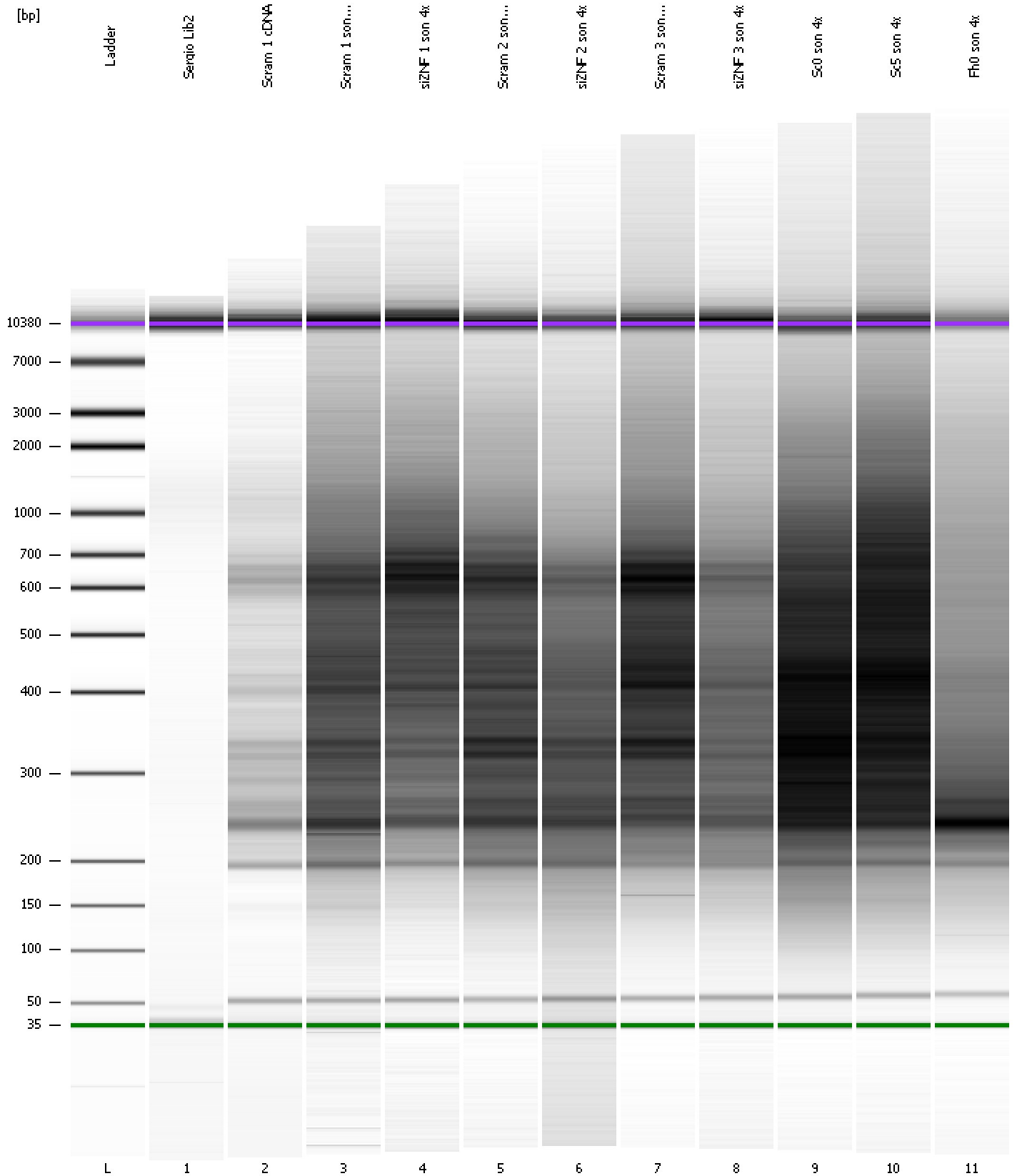
#### Region table for sample 11 : Fh0 son 4x

From [bp]	Molarity [pmol/l]	Average Size [bp]	Conc. [pg/μl]	To [bp]	Corr. Area	% of Total	Size distribution in CV [%]	Color
200	10,160.8	416	2,232.01	1,000	1,654.0	75	43.8	

Assay Class: High Sensitivity DNA Assay  
Data Path: C:\...ents and Settings\Bioanalyzer\2012-03-09\2012-03-09\_004.xad

Created: 3/9/2012 12:07:46 PM  
Modified: 3/9/2012 4:16:55 PM

**Gel Image**



Assay Class: High Sensitivity DNA Assay  
 Data Path: C:\...ents and Settings\Bioanalyzer\2012-03-09\2012-03-09\_004.xad

Created: 3/9/2012 12:07:46 PM  
 Modified: 3/9/2012 4:16:55 PM

**Run Logbook**

Description	Number	Source	Category	Sub Category	Time	Time Zone	User	Host
Run ended on port 1 (Number of wells acquired: 12)		Instrument	Run		3/9/2012 12:49:01 PM	(GMT --08:00) Pacific Standard Time	UC Davis	D8XSMGH1
Run started on port 1 (File: C:\Documents and Settings\Bioanalyzer\2012-03-09\2012-03-09_004.xad)		Instrument	Run		3/9/2012 12:07:47 PM	(GMT --08:00) Pacific Standard Time	UC Davis	D8XSMGH1
Product Number : G2938B		Instrument	Run		3/9/2012 12:07:47 PM	(GMT --08:00) Pacific Standard Time	UC Davis	D8XSMGH1
Name :		Instrument	Run		3/9/2012 12:07:47 PM	(GMT --08:00) Pacific Standard Time	UC Davis	D8XSMGH1
Vendor : Agilent Technologies		Instrument	Run		3/9/2012 12:07:47 PM	(GMT --08:00) Pacific Standard Time	UC Davis	D8XSMGH1
Serial# : DE13701086		Instrument	Run		3/9/2012 12:07:47 PM	(GMT --08:00) Pacific Standard Time	UC Davis	D8XSMGH1
Firmware : C.01.069		Instrument	Run		3/9/2012 12:07:47 PM	(GMT --08:00) Pacific Standard Time	UC Davis	D8XSMGH1
Cartridge : Electrode		Instrument	Run		3/9/2012 12:07:47 PM	(GMT --08:00) Pacific Standard Time	UC Davis	D8XSMGH1