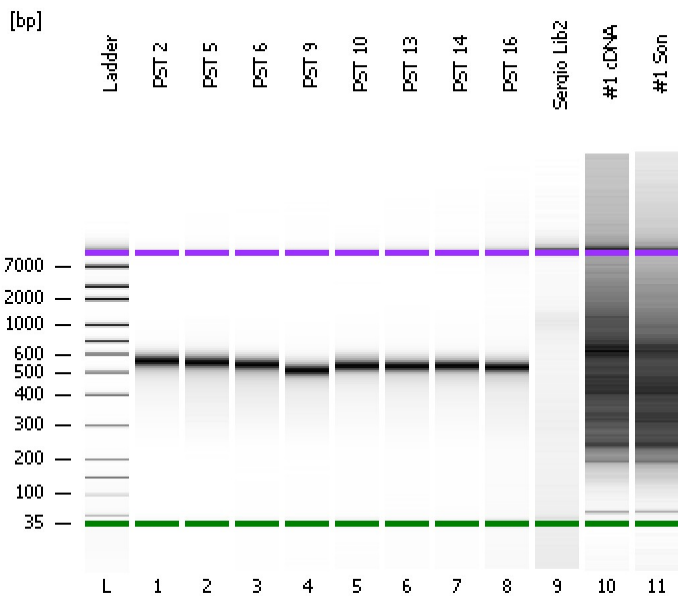


Assay Class: High Sensitivity DNA Assay  
Data Path: C:\...ents and Settings\Bioanalyzer\2012-03-09\2012-03-09\_005.xad

Created: 3/9/2012 1:08:51 PM  
Modified: 3/9/2012 2:18:45 PM

**Electrophoresis File Run Summary**



Instrument Information:

Instrument Name: DE13701086      Firmware: C.01.069  
Serial#: DE13701086      Type: G2938B

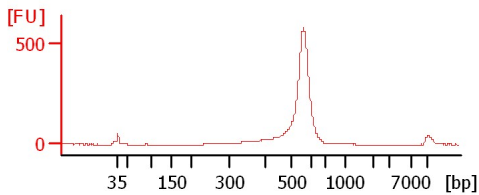
Assay Information:

Assay Origin Path: C:\Program Files\Agilent\2100 bioanalyzer\2100 expert\assays\dsDNA\High Sensitivity DNA.xsy  
Assay Class: High Sensitivity DNA Assay  
Version: 1.03  
Assay Comments: Copyright © 2003-2010 Agilent Technologies

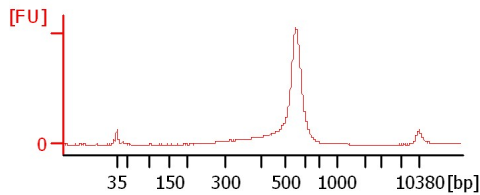
Chip Information:

Chip Lot #:   
Reagent Kit Lot #:   
Chip Comments:

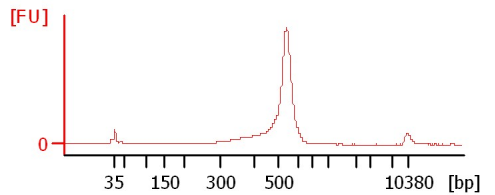
**PST 2**



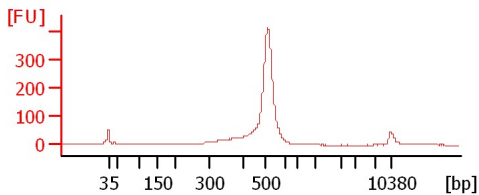
**PST 5**



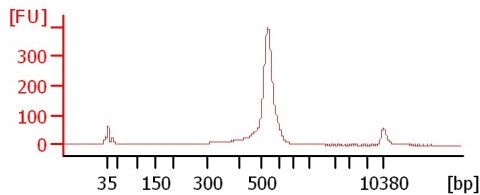
**PST 6**



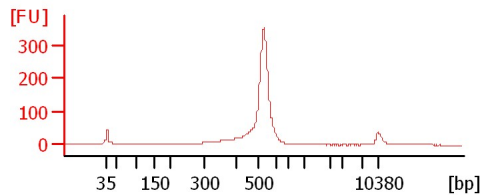
**PST 9**



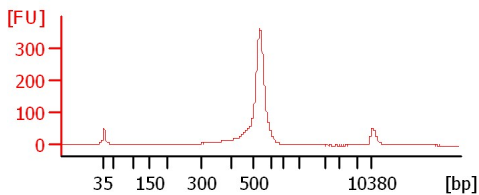
**PST 10**



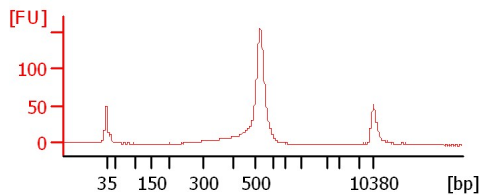
**PST 13**



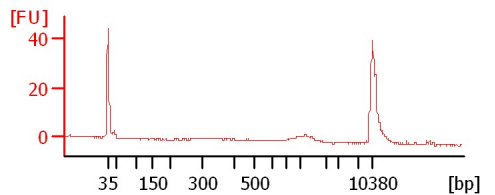
**PST 14**



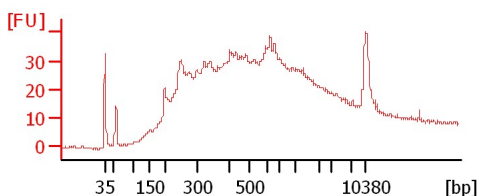
**PST 16**



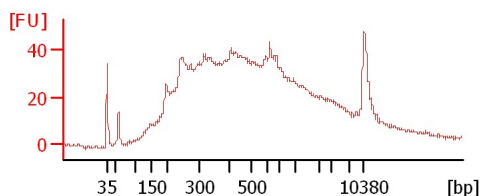
**Sergio Lib2**



**#1 cDNA**



**#1 Son**



Assay Class: High Sensitivity DNA Assay  
Data Path: C:\...ents and Settings\Bioanalyzer\2012-03-09\2012-03-09\_005.xad

Created: 3/9/2012 1:08:51 PM  
Modified: 3/9/2012 2:18:45 PM

**Electrophoresis File Run Summary (Chip Summary)**

Sample Name	Sample Comment	Rest. Digest	Status	Observation	Result Label	Result Color
PST 2		<input type="checkbox"/>	✓			
PST 5		<input type="checkbox"/>	✓			
PST 6		<input type="checkbox"/>	✓			
PST 9		<input type="checkbox"/>	✓			
PST 10		<input type="checkbox"/>	✓			
PST 13		<input type="checkbox"/>	✓			
PST 14		<input type="checkbox"/>	✓			
PST 16		<input type="checkbox"/>	✓			
Sergio Lib2		<input type="checkbox"/>	✓			
#1 cDNA		<input type="checkbox"/>	✓			
#1 Son		<input type="checkbox"/>	✓			
Ladder		<input type="checkbox"/>	✓			

**Chip Lot #**

**Reagent Kit Lot #**

**Chip Comments :**

Assay Class: High Sensitivity DNA Assay  
Data Path: C:\...ents and Settings\Bioanalyzer\2012-03-09\2012-03-09\_005.xad

Created: 3/9/2012 1:08:51 PM  
Modified: 3/9/2012 2:18:45 PM

**Electrophoresis Assay Details**

**General Analysis Settings**

Number of Available Sample and Ladder Wells (Max.) : 12  
Minimum Visible Range [s] : 32  
Maximum Visible Range [s] : 138  
Start Analysis Time Range [s] : 33  
End Analysis Time Range [s] : 137.5  
Ladder Concentration [pg/μl] : 1950  
Uses Standard Area for Ladder Fragments  
Lower Marker Concentration [pg/μl] : 125  
Upper Marker Concentration [pg/μl] : 75  
Used Upper Marker for Quantitation  
Standard Curve Fit is Point to Point  
Show Data Aligned to Lower and Upper Marker

**Integrator Settings**

Integration Start Time [s] : 33.05  
Integration End Time [s] : 137  
Slope Threshold : 0.8  
Height Threshold [FU] : 5  
Area Threshold : 0.1  
Width Threshold [s] : 0.6  
Baseline Plateau [s] : 0.5

**Filter Settings**

Filter Width [s] : 0.5  
Polynomial Order : 4

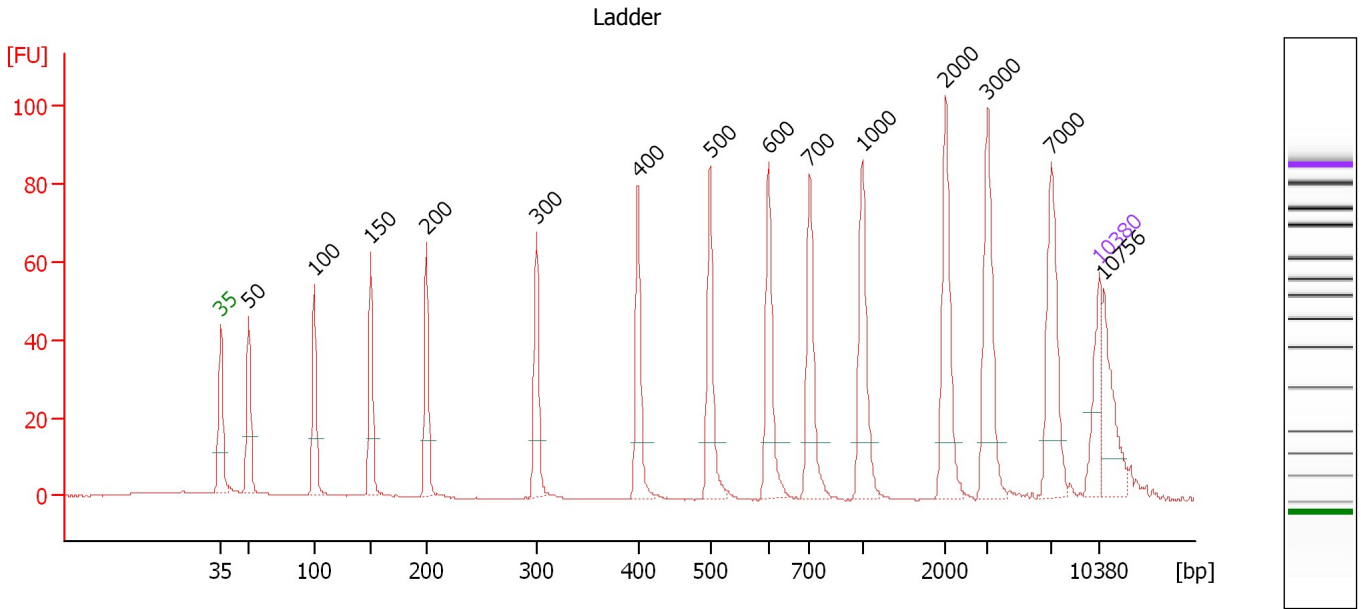
**Ladder**

Ladder Peak	Size	Area
1	35	160
2	50	210
3	100	208
4	150	221
5	200	242
6	300	270
7	400	305
8	500	306
9	600	336
10	700	321
11	1000	366
12	2000	413
13	3000	411
14	7000	400
15	10380	214

Assay Class: High Sensitivity DNA Assay  
 Data Path: C:\...ents and Settings\Bioanalyzer\2012-03-09\2012-03-09\_005.xad

Created: 3/9/2012 1:08:51 PM  
 Modified: 3/9/2012 2:18:45 PM

**Electropherogram Summary**



**Overall Results for Ladder**

Noise: 0.1

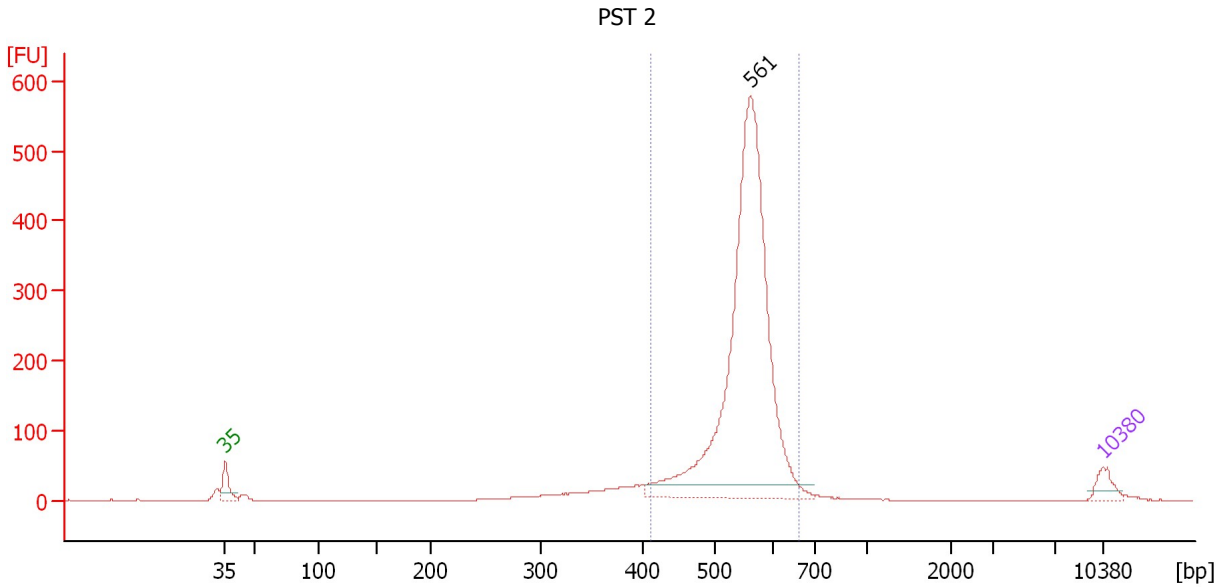
**Peak table for Ladder**

Peak	Size [bp]	Conc. [pg/μl]	Molarity [pmol/l]	Observations
1	35	125.00	5,411.3	Lower Marker
2	50	150.00	4,545.5	Ladder Peak
3	100	150.00	2,272.7	Ladder Peak
4	150	150.00	1,515.2	Ladder Peak
5	200	150.00	1,136.4	Ladder Peak
6	300	150.00	757.6	Ladder Peak
7	400	150.00	568.2	Ladder Peak
8	500	150.00	454.5	Ladder Peak
9	600	150.00	378.8	Ladder Peak
10	700	150.00	324.7	Ladder Peak
11	1,000	150.00	227.3	Ladder Peak
12	2,000	150.00	113.6	Ladder Peak
13	3,000	150.00	75.8	Ladder Peak
14	7,000	150.00	32.5	Ladder Peak
15	10,380	75.00	10.9	Upper Marker
16	10,756	0.00	0.0	

Assay Class: High Sensitivity DNA Assay  
 Data Path: C:\...ents and Settings\Bioanalyzer\2012-03-09\2012-03-09\_005.xad

Created: 3/9/2012 1:08:51 PM  
 Modified: 3/9/2012 2:18:45 PM

**Electropherogram Summary Continued ...**



**Setpoint Deviations for sample 1 : PST 2**

Height Threshold [FU] : 20

**Overall Results for sample 1 : PST 2**

Number of peaks found: 1                      Corr. Area 1: 2,396.7  
 Noise: 0.2

**Peak table for sample 1 : PST 2**

Peak	Size [bp]	Conc. [pg/μl]	Molarity [pmol/l]	Observations
1	35	125.00	5,411.3	Lower Marker
2	561	3,521.74	9,503.8	
3	10,380	75.00	10.9	Upper Marker

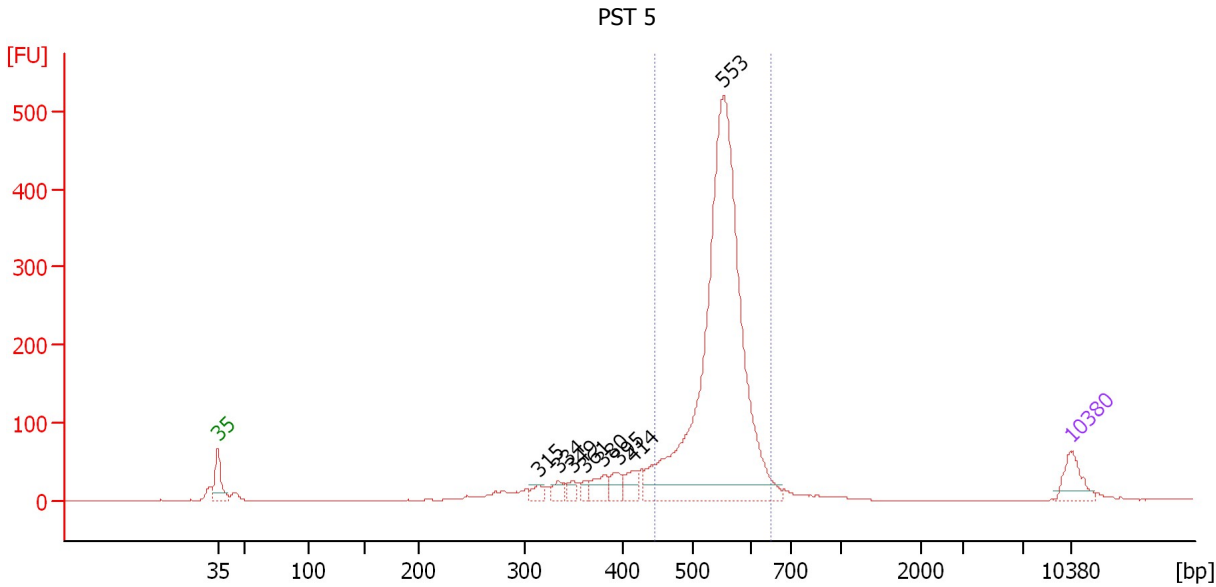
**Region table for sample 1 : PST 2**

From [bp]	Molarity [pmol/l]	Average Size [bp]	Conc. [pg/μl]	To [bp]	Corr. Area	% of Total	Size distribution in CV [%]	Color
411	9,982.8	551	3,603.85	661	2,396.7	89	7.7	Blue

Assay Class: High Sensitivity DNA Assay  
 Data Path: C:\...ents and Settings\Bioanalyzer\2012-03-09\2012-03-09\_005.xad

Created: 3/9/2012 1:08:51 PM  
 Modified: 3/9/2012 2:18:45 PM

**Electropherogram Summary Continued ...**



**Setpoint Deviations for sample 2 : PST 5**

Height Threshold [FU] : 20

**Overall Results for sample 2 : PST 5**

Number of peaks found: 8                      Corr. Area 1: 2,132.9  
 Noise: 0.3

**Peak table for sample 2 : PST 5**

Peak	Size [bp]	Conc. [pg/μl]	Molarity [pmol/l]	Observations
1	35	125.00	5,411.3	Lower Marker
2	315	37.92	182.6	
3	334	47.73	216.5	
4	349	29.36	127.6	
5	361	22.97	96.4	
6	380	80.06	319.3	
7	395	54.43	208.8	
8	414	70.95	259.9	
9	553	2,344.26	6,421.3	
10	10,380	75.00	10.9	Upper Marker

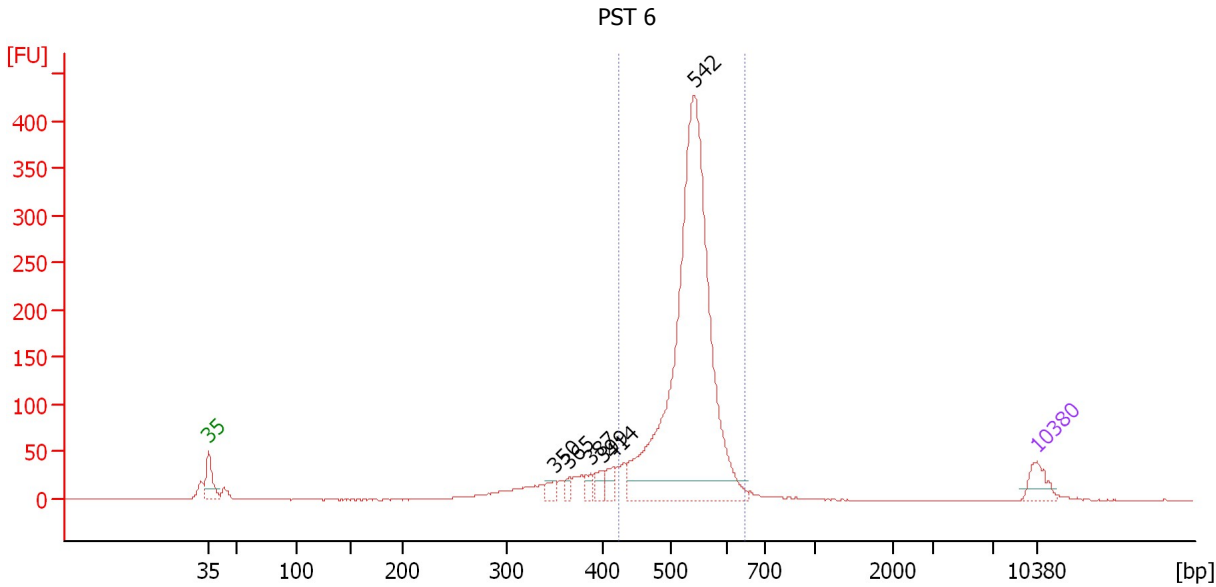
**Region table for sample 2 : PST 5**

From [bp]	Molarity [pmol/l]	Average Size [bp]	Conc. [pg/μl]	To [bp]	Corr. Area	% of Total	Size distribution in CV [%]	Color
445	6,350.6	548	2,282.17	652	2,132.9	79	6.9	Blue

Assay Class: High Sensitivity DNA Assay  
 Data Path: C:\...ents and Settings\Bioanalyzer\2012-03-09\2012-03-09\_005.xad

Created: 3/9/2012 1:08:51 PM  
 Modified: 3/9/2012 2:18:45 PM

**Electropherogram Summary Continued ...**



**Setpoint Deviations for sample 3 : PST 6**

Height Threshold [FU] : 20

**Overall Results for sample 3 : PST 6**

Number of peaks found: 6                      Corr. Area 1: 1,774.8  
 Noise: 0.4

**Peak table for sample 3 : PST 6**

Peak	Size [bp]	Conc. [pg/μl]	Molarity [pmol/l]	Observations
1	35	125.00	5,411.3	Lower Marker
2	350	50.28	217.9	
3	365	34.61	143.8	
4	387	47.23	184.7	
5	399	64.17	243.7	
6	414	59.77	218.6	
7	542	2,765.06	7,726.3	
8	10,380	75.00	10.9	Upper Marker

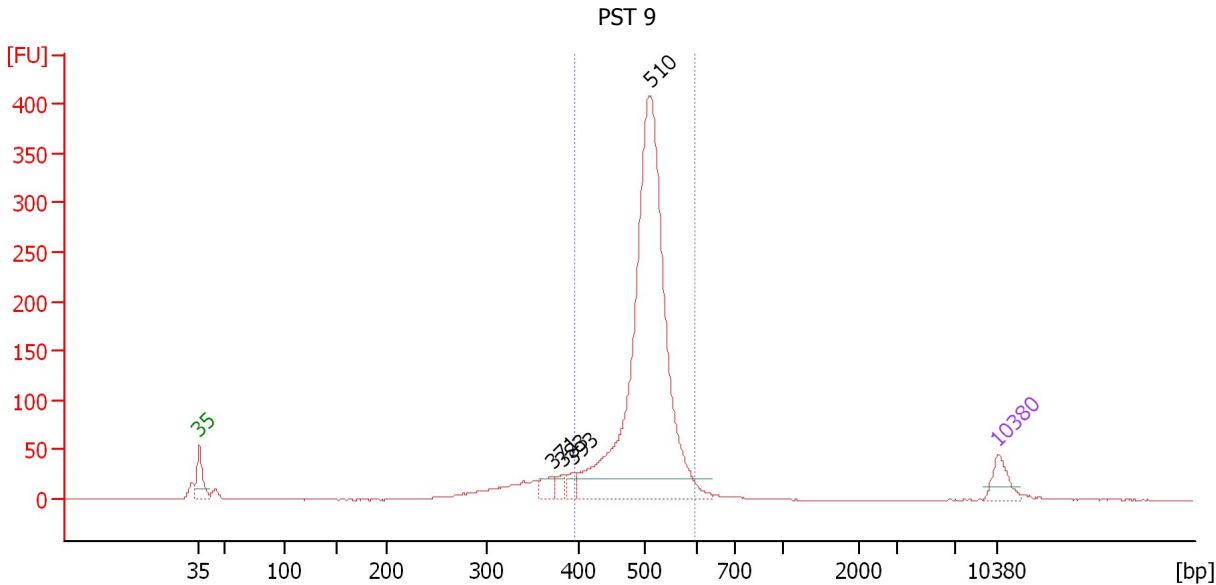
**Region table for sample 3 : PST 6**

From [bp]	Molarity [pmol/l]	Average Size [bp]	Conc. [pg/μl]	To [bp]	Corr. Area	% of Total	Size distribution in CV [%]	Color
424	8,124.2	533	2,837.57	649	1,774.8	81	7.4	Blue

Assay Class: High Sensitivity DNA Assay  
 Data Path: C:\...ents and Settings\Bioanalyzer\2012-03-09\2012-03-09\_005.xad

Created: 3/9/2012 1:08:51 PM  
 Modified: 3/9/2012 2:18:45 PM

**Electropherogram Summary Continued ...**



**Setpoint Deviations for sample 4 : PST 9**

Height Threshold [FU] : 20

**Overall Results for sample 4 : PST 9**

Number of peaks found: 4                      Corr. Area 1: 1,658.4  
 Noise: 0.2

**Peak table for sample 4 : PST 9**

Peak	Size [bp]	Conc. [pg/μl]	Molarity [pmol/l]	Observations
1	35	125.00	5,411.3	Lower Marker
2	371	59.39	242.8	
3	383	48.00	190.1	
4	393	48.06	185.3	
5	510	2,544.05	7,557.4	
6	10,380	75.00	10.9	Upper Marker

**Region table for sample 4 : PST 9**

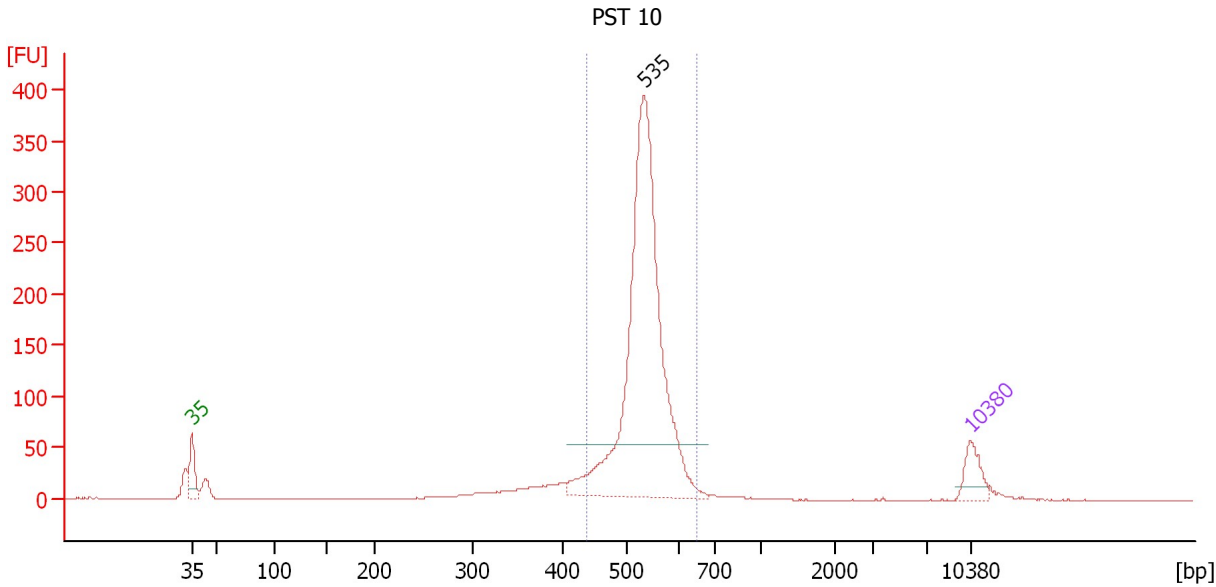
From [bp]	Molarity [pmol/l]	Average Size [bp]	Conc. [pg/μl]	To [bp]	Corr. Area	% of Total	Size distribution in CV [%]	Color
396	7,702.7	504	2,551.60	596	1,658.4	83	7.1	Blue



Assay Class: High Sensitivity DNA Assay  
 Data Path: C:\...ents and Settings\Bioanalyzer\2012-03-09\2012-03-09\_005.xad

Created: 3/9/2012 1:08:51 PM  
 Modified: 3/9/2012 2:18:45 PM

**Electropherogram Summary Continued ...**



**Setpoint Deviations for sample 5 : PST 10**

Height Threshold [FU] : 50

**Overall Results for sample 5 : PST 10**

Number of peaks found: 1                      Corr. Area 1: 1,514.4  
 Noise: 0.2

**Peak table for sample 5 : PST 10**

Peak	Size [bp]	Conc. [pg/μl]	Molarity [pmol/l]	Observations
1	35	125.00	5,411.3	Lower Marker
2	535	1,803.12	5,109.7	
3	10,380	75.00	10.9	Upper Marker

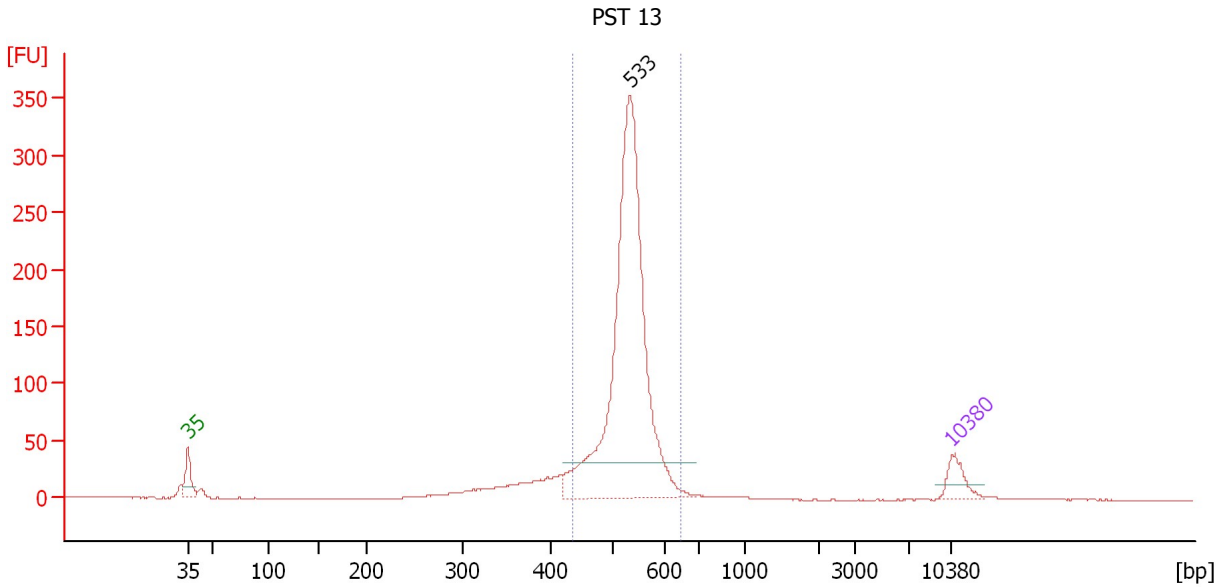
**Region table for sample 5 : PST 10**

From [bp]	Molarity [pmol/l]	Average Size [bp]	Conc. [pg/μl]	To [bp]	Corr. Area	% of Total	Size distribution in CV [%]	Color
440	5,103.1	536	1,796.37	654	1,514.4	83	6.6	Blue

Assay Class: High Sensitivity DNA Assay  
 Data Path: C:\...ents and Settings\Bioanalyzer\2012-03-09\2012-03-09\_005.xad

Created: 3/9/2012 1:08:51 PM  
 Modified: 3/9/2012 2:18:45 PM

**Electropherogram Summary Continued ...**



**Setpoint Deviations for sample 6 : PST 13**

Height Threshold [FU] : 30

**Overall Results for sample 6 : PST 13**

Number of peaks found: 1                      Corr. Area 1: 1,307.4  
 Noise: 0.2

**Peak table for sample 6 : PST 13**

Peak	Size [bp]	Conc. [pg/μl]	Molarity [pmol/l]	Observations
1	35	125.00	5,411.3	Lower Marker
2	533	2,074.50	5,894.0	
3	10,380	75.00	10.9	Upper Marker

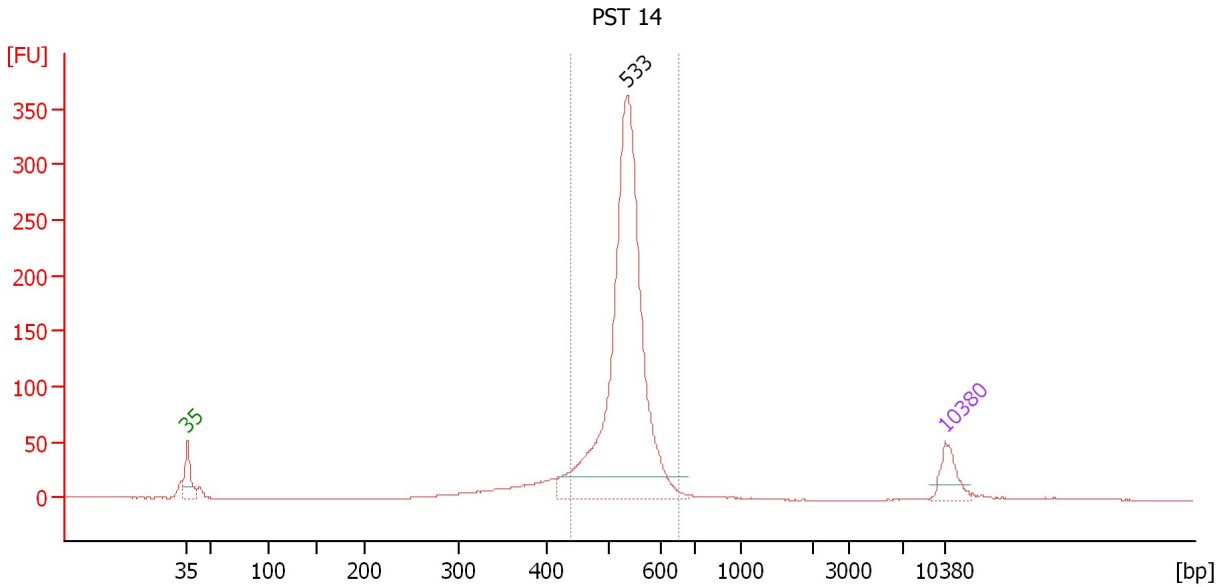
**Region table for sample 6 : PST 13**

From [bp]	Molarity [pmol/l]	Average Size [bp]	Conc. [pg/μl]	To [bp]	Corr. Area	% of Total	Size distribution in CV [%]	Color
437	5,897.8	530	2,053.61	644	1,307.4	82	6.5	Blue

Assay Class: High Sensitivity DNA Assay  
 Data Path: C:\...ents and Settings\Bioanalyzer\2012-03-09\2012-03-09\_005.xad

Created: 3/9/2012 1:08:51 PM  
 Modified: 3/9/2012 2:18:45 PM

**Electropherogram Summary Continued ...**



**Setpoint Deviations for sample 7 : PST 14**

Height Threshold [FU] : 20

**Overall Results for sample 7 : PST 14**

Number of peaks found: 1                      Corr. Area 1: 1,341.8  
 Noise: 0.2

**Peak table for sample 7 : PST 14**

Peak	Size [bp]	Conc. [pg/μl]	Molarity [pmol/l]	Observations
1	35	125.00	5,411.3	Lower Marker
2	533	1,725.52	4,904.4	
3	10,380	75.00	10.9	Upper Marker

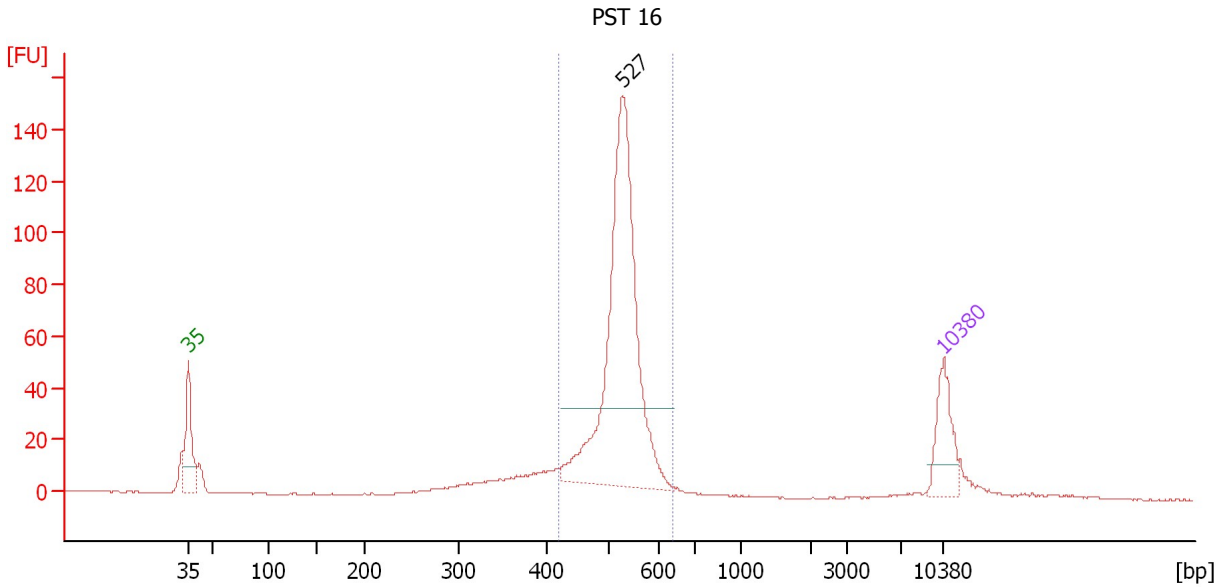
**Region table for sample 7 : PST 14**

From [bp]	Molarity [pmol/l]	Average Size [bp]	Conc. [pg/μl]	To [bp]	Corr. Area	% of Total	Size distribution in CV [%]	Color
439	4,854.2	532	1,697.17	650	1,341.8	84	6.5	Blue

Assay Class: High Sensitivity DNA Assay  
 Data Path: C:\...ents and Settings\Bioanalyzer\2012-03-09\2012-03-09\_005.xad

Created: 3/9/2012 1:08:51 PM  
 Modified: 3/9/2012 2:18:45 PM

**Electropherogram Summary Continued ...**



**Setpoint Deviations for sample 8 : PST 16**

Height Threshold [FU] : 30

**Overall Results for sample 8 : PST 16**

Number of peaks found: 1                      Corr. Area 1: 584.0  
 Noise: 0.2

**Peak table for sample 8 : PST 16**

Peak	Size [bp]	Conc. [pg/μl]	Molarity [pmol/l]	Observations
1	35	125.00	5,411.3	Lower Marker
2	527	699.93	2,011.5	
3	10,380	75.00	10.9	Upper Marker

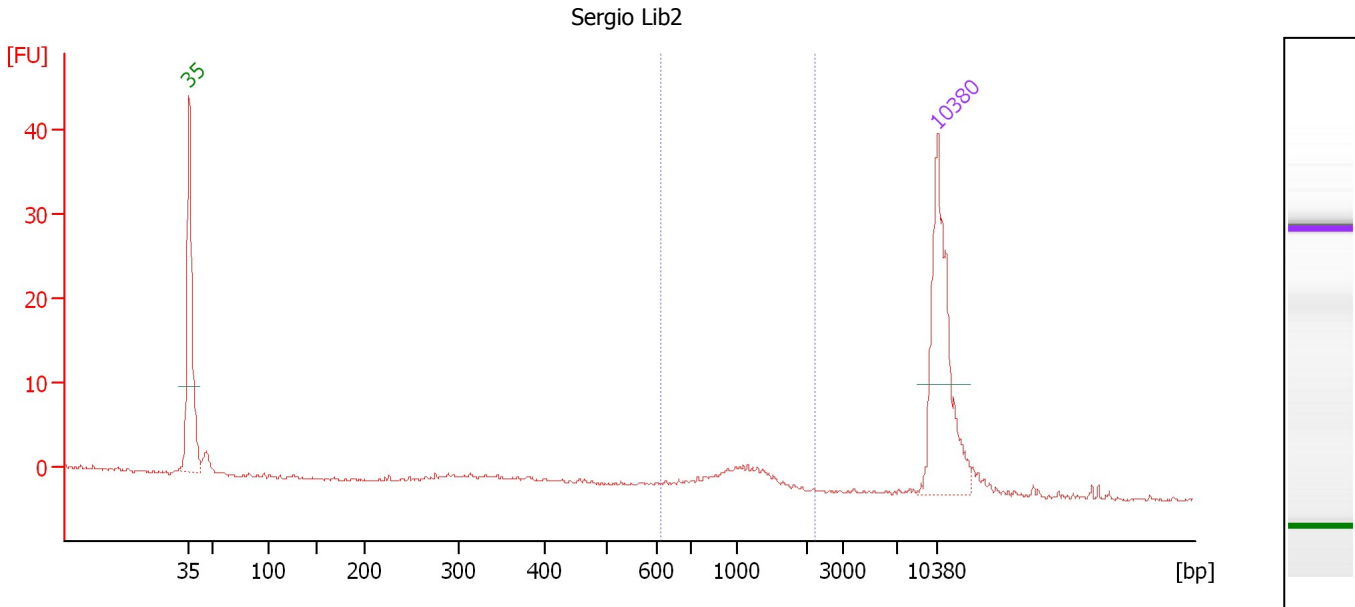
**Region table for sample 8 : PST 16**

From [bp]	Molarity [pmol/l]	Average Size [bp]	Conc. [pg/μl]	To [bp]	Corr. Area	% of Total	Size distribution in CV [%]	Color
417	2,252.9	522	772.00	636	584.0	77	7.0	Blue

Assay Class: High Sensitivity DNA Assay  
 Data Path: C:\...ents and Settings\Bioanalyzer\2012-03-09\2012-03-09\_005.xad

Created: 3/9/2012 1:08:51 PM  
 Modified: 3/9/2012 2:18:45 PM

**Electropherogram Summary Continued ...**



**Overall Results for sample 9 : Sergio Lib2**

Number of peaks found: 0      Corr. Area 1: 16.8  
 Noise: 0.2

**Peak table for sample 9 : Sergio Lib2**

Peak	Size [bp]	Conc. [pg/μl]	Molarity [pmol/l]	Observations
1	35	125.00	5,411.3	Lower Marker
2	10,380	75.00	10.9	Upper Marker

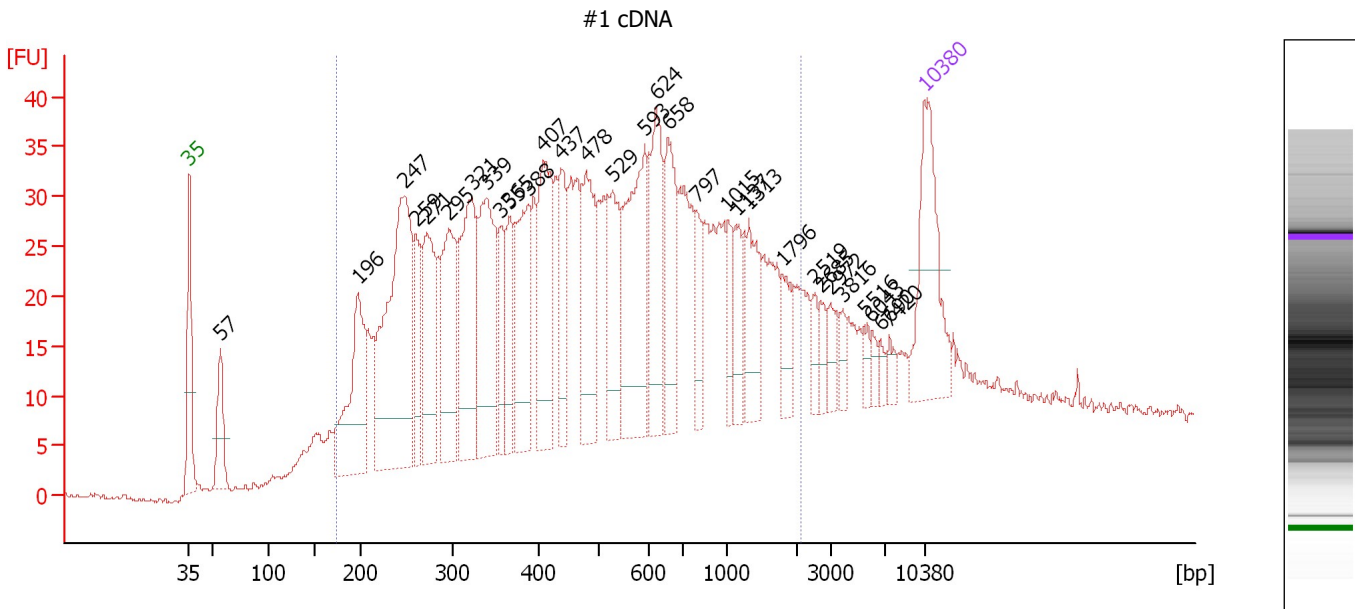
**Region table for sample 9 : Sergio Lib2**

From [bp]	Molarity [pmol/l]	Average Size [bp]	Conc. [pg/μl]	To [bp]	Corr. Area	% of Total	Size distribution in CV [%]	Color
612	32.6	1,109	22.11	2,198	16.8	46	26.6	Blue

Assay Class: High Sensitivity DNA Assay  
 Data Path: C:\...ents and Settings\Bioanalyzer\2012-03-09\2012-03-09\_005.xad

Created: 3/9/2012 1:08:51 PM  
 Modified: 3/9/2012 2:18:45 PM

**Electropherogram Summary Continued ...**



**Overall Results for sample 10 : #1 cDNA**

Number of peaks found: 31      Corr. Area 1: 1,299.3  
 Noise: 0.3

**Peak table for sample 10 : #1 cDNA**

Peak	Size [bp]	Conc. [pg/μl]	Molarity [pmol/l]	Observations
1	35	125.00	5,411.3	Lower Marker
2	57	53.71	1,437.5	
3	196	127.90	986.4	
4	247	263.14	1,611.3	
5	259	55.77	326.2	
6	271	102.20	571.0	
7	295	107.70	553.2	
8	321	128.57	606.0	
9	339	131.91	589.6	
10	355	41.44	177.1	
11	365	44.43	184.3	
12	388	99.36	388.2	
13	407	107.11	398.3	
14	437	56.76	197.0	
15	478	89.26	282.8	
16	529	73.34	210.2	
17	593	127.65	326.3	
18	624	87.81	213.3	
19	658	69.90	161.0	
20	797	34.94	66.4	
21	1,015	22.36	33.4	
22	1,137	26.15	34.8	
23	1,313	43.59	50.3	
24	1,796	22.17	18.7	
25	2,519	11.37	6.8	
26	2,685	9.79	5.5	

Assay Class: High Sensitivity DNA Assay  
 Data Path: C:\...ents and Settings\Bioanalyzer\2012-03-09\2012-03-09\_005.xad


Created: 3/9/2012 1:08:51 PM  
 Modified: 3/9/2012 2:18:45 PM

### Electropherogram Summary Continued ...

#### ... Peak table for sample 10 : #1 cDNA

Peak	Size [bp]	Conc. [pg/μl]	Molarity [pmol/l]	Observations
27	2,972	12.96	6.6	
28	3,816	8.73	3.5	
29	5,516	8.42	2.3	
30	6,043	6.13	1.5	
31	6,690	6.00	1.4	
32	7,420	7.51	1.5	
33	10,380	75.00	10.9	Upper Marker

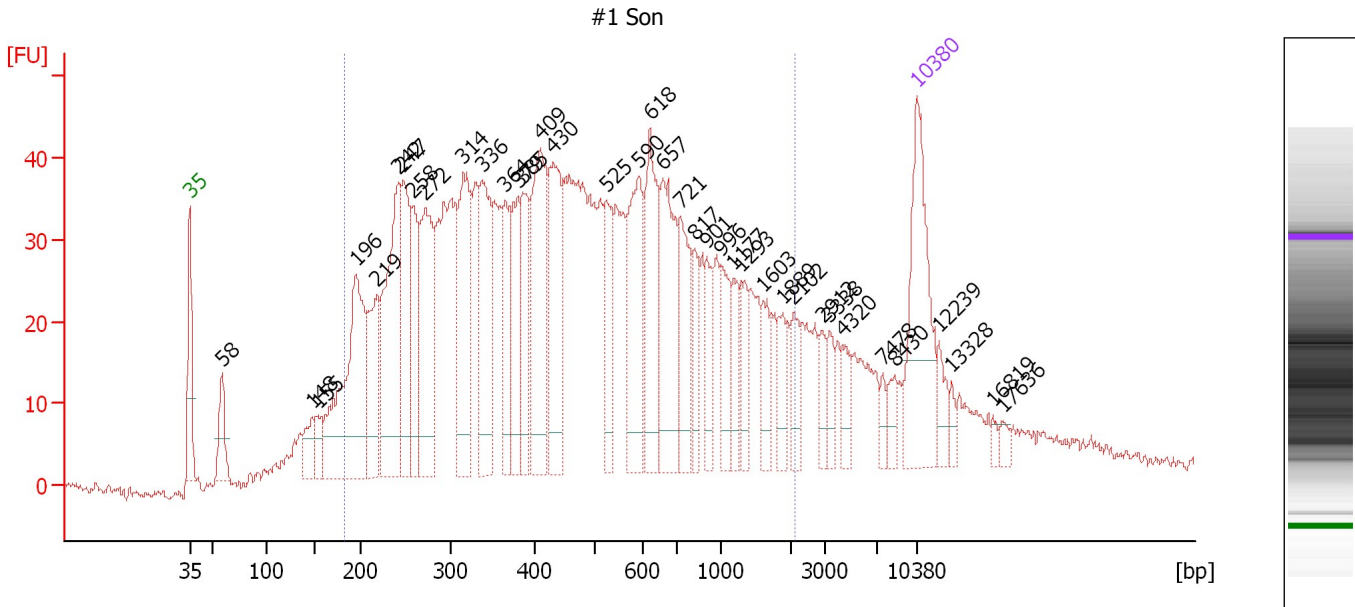
#### Region table for sample 10 : #1 cDNA

From [bp]	Molarity [pmol/l]	Average Size [bp]	Conc. [pg/μl]	To [bp]	Corr. Area	% of Total	Size distribution in CV [%]	Color
174	10,149.6	596	2,562.50	2,110	1,299.3	85	68.2	

Assay Class: High Sensitivity DNA Assay  
 Data Path: C:\...ents and Settings\Bioanalyzer\2012-03-09\2012-03-09\_005.xad

Created: 3/9/2012 1:08:51 PM  
 Modified: 3/9/2012 2:18:45 PM

**Electropherogram Summary Continued ...**



**Overall Results for sample 11 : #1 Son**

Number of peaks found: 38                      Corr. Area 1: 1,664.0  
 Noise: 0.6

**Peak table for sample 11 : #1 Son**

Peak	Size [bp]	Conc. [pg/μl]	Molarity [pmol/l]	Observations
1	35	125.00	5,411.3	Lower Marker
2	58	34.91	905.9	
3	148	25.63	262.4	
4	155	16.29	159.3	
5	196	172.03	1,333.0	
6	219	66.17	457.9	
7	242	142.35	889.8	
8	247	75.40	462.4	
9	258	55.60	327.0	
10	272	105.95	590.8	
11	314	102.51	494.1	
12	336	89.65	403.7	
13	364	44.44	184.8	
14	379	52.38	209.2	
15	385	53.40	210.4	
16	409	108.87	402.9	
17	430	87.19	307.2	
18	525	46.77	135.0	
19	590	78.87	202.6	
20	618	76.19	186.7	
21	657	83.39	192.2	
22	721	47.72	100.2	
23	817	23.24	43.1	
24	901	22.62	38.0	
25	996	29.24	44.5	
26	1,177	18.91	24.3	




Assay Class: High Sensitivity DNA Assay  
 Data Path: C:\...ents and Settings\Bioanalyzer\2012-03-09\2012-03-09\_005.xad


Created: 3/9/2012 1:08:51 PM  
 Modified: 3/9/2012 2:18:45 PM

**Electropherogram Summary Continued ...**

**... Peak table for sample 11 : #1 Son**

Peak	Size [bp]	Conc. [pg/μl]	Molarity [pmol/l]	Observations
27	1,293	18.13	21.2	
28	1,603	18.35	17.3	
29	1,889	17.06	13.7	
30	2,102	16.50	11.9	
31	2,912	12.12	6.3	
32	3,338	11.62	5.3	
33	4,320	13.31	4.7	
34	7,478	7.01	1.4	
35	8,430	9.78	1.8	
36	 10,380	75.00	10.9	Upper Marker
37	12,239	0.00	0.0	
38	13,328	0.00	0.0	
39	16,819	0.00	0.0	
40	17,636	0.00	0.0	

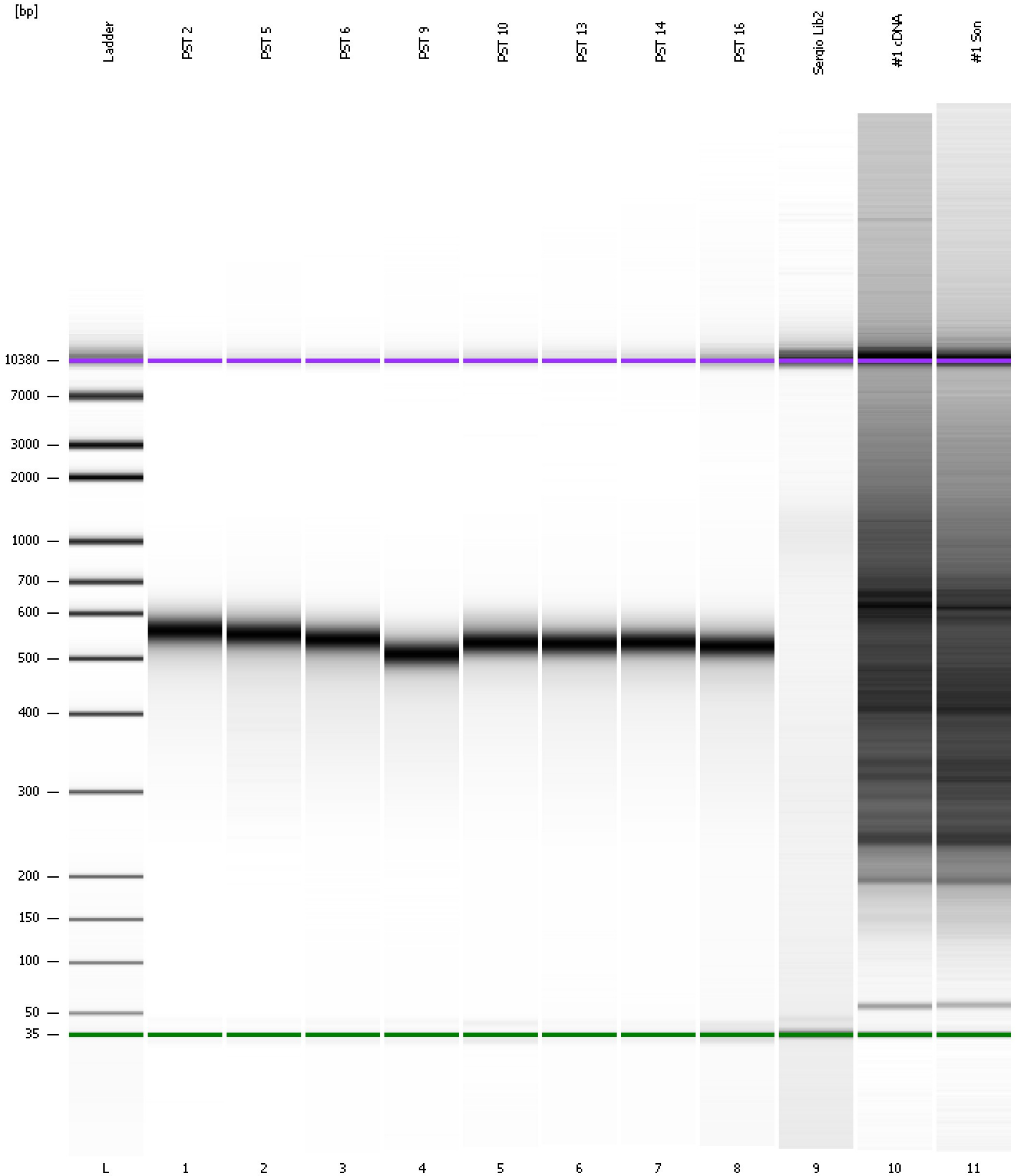
**Region table for sample 11 : #1 Son**

From [bp]	Molarity [pmol/l]	Average Size [bp]	Conc. [pg/μl]	To [bp]	Corr. Area	% of Total	Size distribution in CV [%]	Color
184	9,428.6	568	2,317.76	2,116	1,664.0	83	69.0	

Assay Class: High Sensitivity DNA Assay  
Data Path: C:\...ents and Settings\Bioanalyzer\2012-03-09\2012-03-09\_005.xad

Created: 3/9/2012 1:08:51 PM  
Modified: 3/9/2012 2:18:45 PM

**Gel Image**



Assay Class: High Sensitivity DNA Assay  
 Data Path: C:\...ents and Settings\Bioanalyzer\2012-03-09\2012-03-09\_005.xad

Created: 3/9/2012 1:08:51 PM  
 Modified: 3/9/2012 2:18:45 PM

**Run Logbook**

Description	Number	Source	Category	Sub Category	Time	Time Zone	User	Host
Run ended on port 1 (Number of wells acquired: 12)		Instrument	Run		3/9/2012 1:50:10 PM	(GMT --08:00) Pacific Standard Time	UC Davis	D8XSMGH1
Run started on port 1 (File: C:\Documents and Settings\Bioanalyzer\2012-03-09\2012-03-09_005.xad)		Instrument	Run		3/9/2012 1:08:56 PM	(GMT --08:00) Pacific Standard Time	UC Davis	D8XSMGH1
Product Number : G2938B		Instrument	Run		3/9/2012 1:08:56 PM	(GMT --08:00) Pacific Standard Time	UC Davis	D8XSMGH1
Name :		Instrument	Run		3/9/2012 1:08:56 PM	(GMT --08:00) Pacific Standard Time	UC Davis	D8XSMGH1
Vendor : Agilent Technologies		Instrument	Run		3/9/2012 1:08:56 PM	(GMT --08:00) Pacific Standard Time	UC Davis	D8XSMGH1
Serial# : DE13701086		Instrument	Run		3/9/2012 1:08:56 PM	(GMT --08:00) Pacific Standard Time	UC Davis	D8XSMGH1
Firmware : C.01.069		Instrument	Run		3/9/2012 1:08:56 PM	(GMT --08:00) Pacific Standard Time	UC Davis	D8XSMGH1
Cartridge : Electrode		Instrument	Run		3/9/2012 1:08:56 PM	(GMT --08:00) Pacific Standard Time	UC Davis	D8XSMGH1