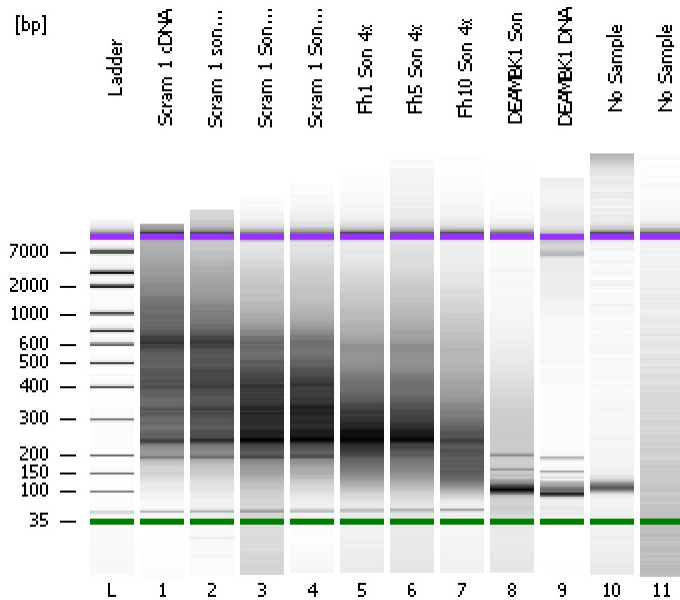


Assay Class: High Sensitivity DNA Assay
Data Path: C:\...ents and Settings\Bioanalyzer\2012-03-09\2012-03-09_006.xad

Created: 3/9/2012 3:28:08 PM
Modified: 3/9/2012 4:13:29 PM

Electrophoresis File Run Summary



Instrument Information:

Instrument Name: DE13701086 Firmware: C.01.069
Serial#: DE13701086 Type: G2938B

Assay Information:

Assay Origin Path: C:\Program Files\Agilent\2100 bioanalyzer\2100 expert\assays\dsDNA\High Sensitivity DNA.xsy
Assay Class: High Sensitivity DNA Assay
Version: 1.03
Assay Comments: Copyright © 2003-2010 Agilent Technologies

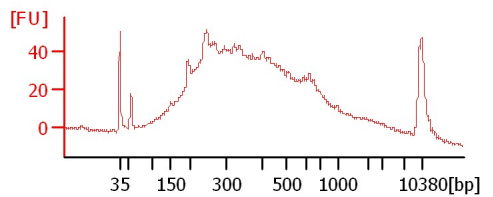
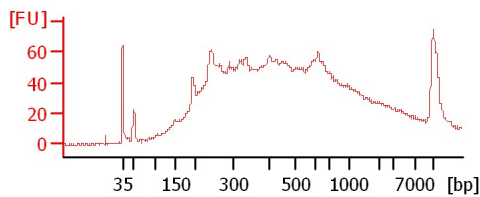
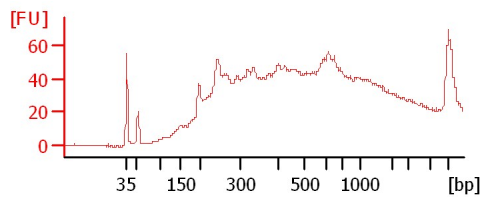
Chip Information:

Chip Lot #:
Reagent Kit Lot #:
Chip Comments:

Scram 1 cDNA

Scram 1 son 4x

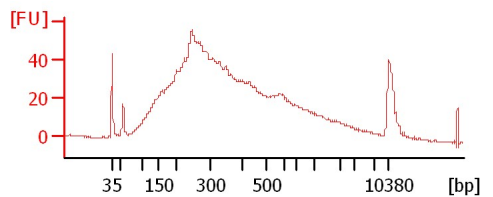
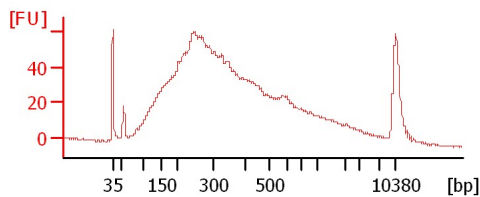
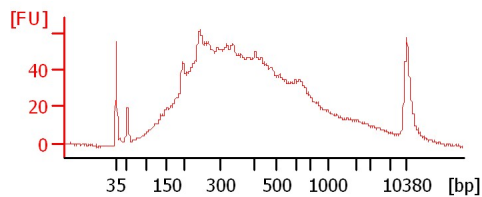
Scram 1 Son 6x



Scram 1 Son 9x

Fh1 Son 4x

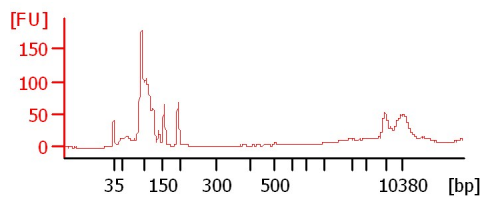
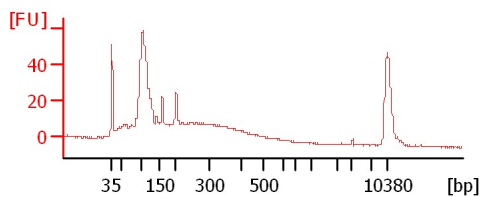
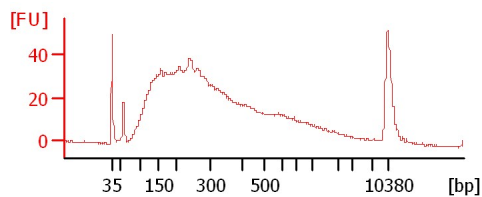
Fh5 Son 4x



Fh10 Son 4x

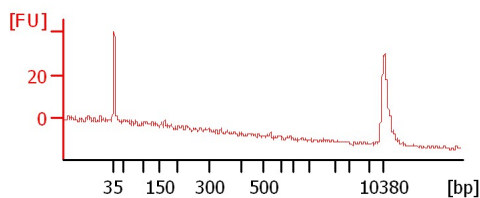
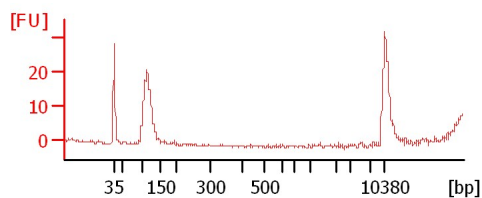
DEAMBK1 Son

DEAMBK1 DNA



No Sample

No Sample



Assay Class: High Sensitivity DNA Assay
Data Path: C:\...ents and Settings\Bioanalyzer\2012-03-09\2012-03-09_006.xad

Created: 3/9/2012 3:28:08 PM
Modified: 3/9/2012 4:13:29 PM

Electrophoresis File Run Summary (Chip Summary)

Sample Name	Sample Comment	Rest. Digest	Status	Observation	Result Label	Result Color
Scram 1 cDNA		<input type="checkbox"/>	✓			
Scram 1 son 4x		<input type="checkbox"/>	✓			
Scram 1 Son 6x		<input type="checkbox"/>	✓			
Scram 1 Son 9x		<input type="checkbox"/>	✓			
Fh1 Son 4x		<input type="checkbox"/>	✓			
Fh5 Son 4x		<input type="checkbox"/>	✓			
Fh10 Son 4x		<input type="checkbox"/>	✓			
DEAMBK1 Son	1:29	<input type="checkbox"/>	✓			
DEAMBK1 DNA	1:29	<input type="checkbox"/>	✓			
No Sample		<input type="checkbox"/>	✓			
No Sample		<input type="checkbox"/>	✓			
Ladder		<input type="checkbox"/>	✓			

Chip Lot #

Reagent Kit Lot #

Chip Comments :

Assay Class: High Sensitivity DNA Assay
Data Path: C:\...ents and Settings\Bioanalyzer\2012-03-09\2012-03-09_006.xad

Created: 3/9/2012 3:28:08 PM
Modified: 3/9/2012 4:13:29 PM

Electrophoresis Assay Details

General Analysis Settings

Number of Available Sample and Ladder Wells (Max.) : 12
Minimum Visible Range [s] : 32
Maximum Visible Range [s] : 138
Start Analysis Time Range [s] : 33
End Analysis Time Range [s] : 137.5
Ladder Concentration [pg/μl] : 1950
Uses Standard Area for Ladder Fragments
Lower Marker Concentration [pg/μl] : 125
Upper Marker Concentration [pg/μl] : 75
Used Upper Marker for Quantitation
Standard Curve Fit is Point to Point
Show Data Aligned to Lower and Upper Marker

Integrator Settings

Integration Start Time [s] : 33.05
Integration End Time [s] : 137
Slope Threshold : 0.8
Height Threshold [FU] : 5
Area Threshold : 0.1
Width Threshold [s] : 0.6
Baseline Plateau [s] : 0.5

Filter Settings

Filter Width [s] : 0.5
Polynomial Order : 4

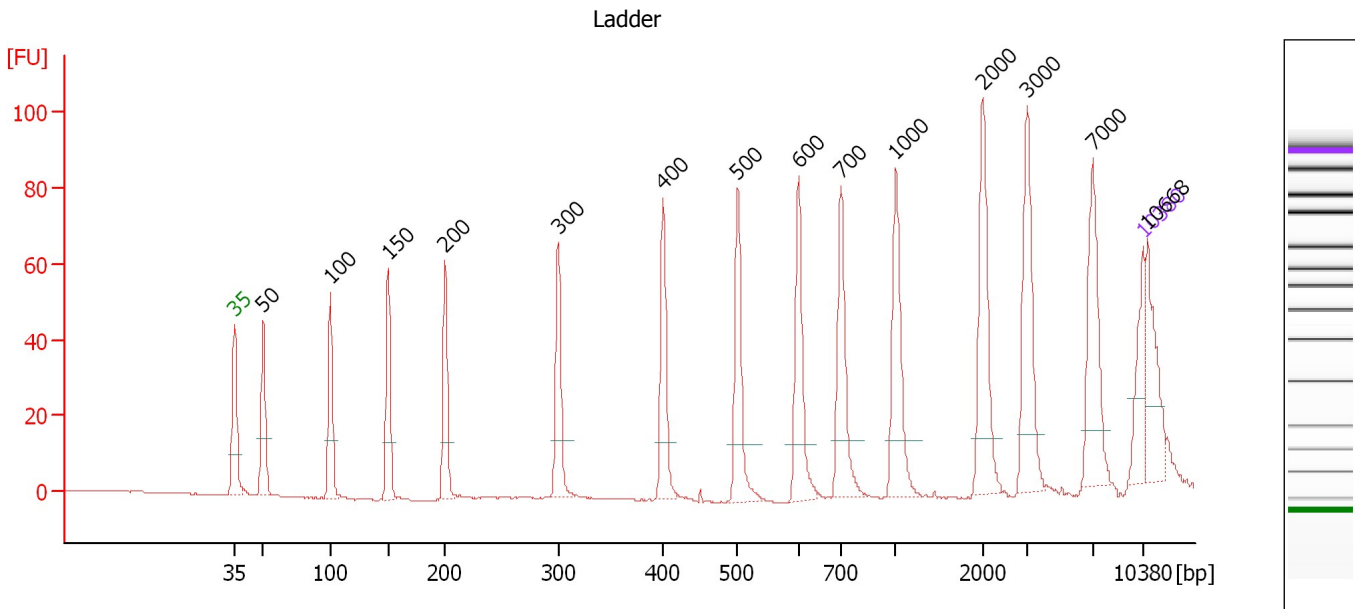
Ladder

Ladder Peak	Size	Area
1	35	160
2	50	210
3	100	208
4	150	221
5	200	242
6	300	270
7	400	305
8	500	306
9	600	336
10	700	321
11	1000	366
12	2000	413
13	3000	411
14	7000	400
15	10380	214

Assay Class: High Sensitivity DNA Assay
 Data Path: C:\...ents and Settings\Bioanalyzer\2012-03-09\2012-03-09_006.xad

Created: 3/9/2012 3:28:08 PM
 Modified: 3/9/2012 4:13:29 PM

Electropherogram Summary



Overall Results for Ladder

Noise: 0.1

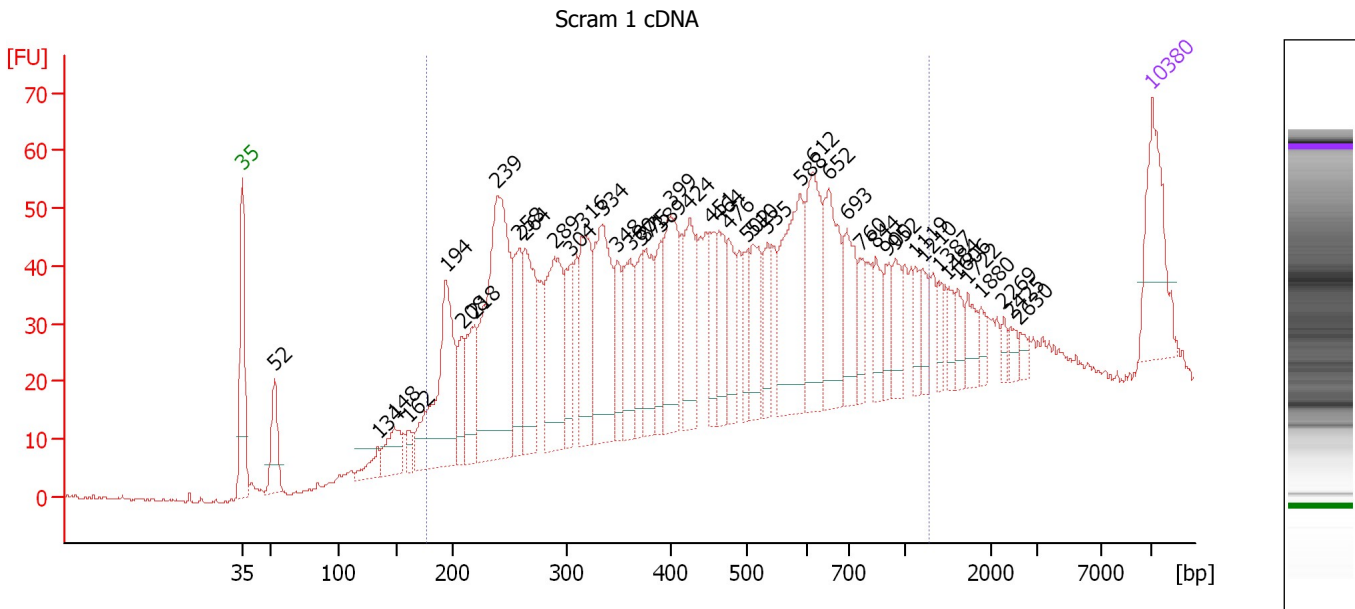
Peak table for Ladder

Peak	Size [bp]	Conc. [pg/μl]	Molarity [pmol/l]	Observations
1	35	125.00	5,411.3	Lower Marker
2	50	150.00	4,545.5	Ladder Peak
3	100	150.00	2,272.7	Ladder Peak
4	150	150.00	1,515.2	Ladder Peak
5	200	150.00	1,136.4	Ladder Peak
6	300	150.00	757.6	Ladder Peak
7	400	150.00	568.2	Ladder Peak
8	500	150.00	454.5	Ladder Peak
9	600	150.00	378.8	Ladder Peak
10	700	150.00	324.7	Ladder Peak
11	1,000	150.00	227.3	Ladder Peak
12	2,000	150.00	113.6	Ladder Peak
13	3,000	150.00	75.8	Ladder Peak
14	7,000	150.00	32.5	Ladder Peak
15	10,380	75.00	10.9	Upper Marker
16	10,668	0.00	0.0	

Assay Class: High Sensitivity DNA Assay
 Data Path: C:\...ents and Settings\Bioanalyzer\2012-03-09\2012-03-09_006.xad

Created: 3/9/2012 3:28:08 PM
 Modified: 3/9/2012 4:13:29 PM

Electropherogram Summary Continued ...



Overall Results for sample 1 : Scram 1 cDNA

Number of peaks found: 45 Corr. Area 1: 1,588.1
 Noise: 0.3

Peak table for sample 1 : Scram 1 cDNA


Peak	Size [bp]	Conc. [pg/μl]	Molarity [pmol/l]	Observations
1	35	125.00	5,411.3	Lower Marker
2	52	65.80	1,904.4	
3	134	26.16	295.5	
4	148	49.34	503.6	
5	162	17.82	167.1	
6	194	209.80	1,641.0	
7	208	49.94	364.1	
8	218	78.93	548.2	
9	239	330.48	2,096.1	
10	258	86.15	506.5	
11	264	124.30	713.8	
12	289	150.61	788.8	
13	304	68.58	342.1	
14	316	111.81	536.3	
15	334	155.36	705.6	
16	348	46.13	200.6	
17	360	67.22	282.5	
18	371	50.95	208.0	
19	375	64.33	259.8	
20	389	51.29	199.6	
21	399	107.98	410.0	
22	424	85.41	305.5	
23	451	40.37	135.5	
24	464	51.27	167.6	
25	476	50.15	159.5	
26	502	33.99	102.6	

Assay Class: High Sensitivity DNA Assay
 Data Path: C:\...ents and Settings\Bioanalyzer\2012-03-09\2012-03-09_006.xad


Created: 3/9/2012 3:28:08 PM
 Modified: 3/9/2012 4:13:29 PM

Electropherogram Summary Continued ...

... Peak table for sample 1 : Scram 1 cDNA

Peak	Size [bp]	Conc. [pg/µl]	Molarity [pmol/l]	Observations
27	510	59.94	178.2	
28	535	39.85	112.9	
29	588	130.75	336.7	
30	612	100.74	249.3	
31	652	93.44	217.3	
32	693	60.53	132.3	
33	760	25.86	51.5	
34	844	31.39	56.3	
35	900	22.05	37.1	
36	952	29.40	46.8	
37	1,119	19.26	26.1	
38	1,210	19.47	24.4	
39	1,387	15.65	17.1	
40	1,484	15.30	15.6	
41	1,606	16.42	15.5	
42	1,722	19.75	17.4	
43	1,880	11.06	8.9	
44	2,269	6.98	4.7	
45	2,425	8.69	5.4	
46	2,630	7.46	4.3	
47	 10,380	75.00	10.9	Upper Marker

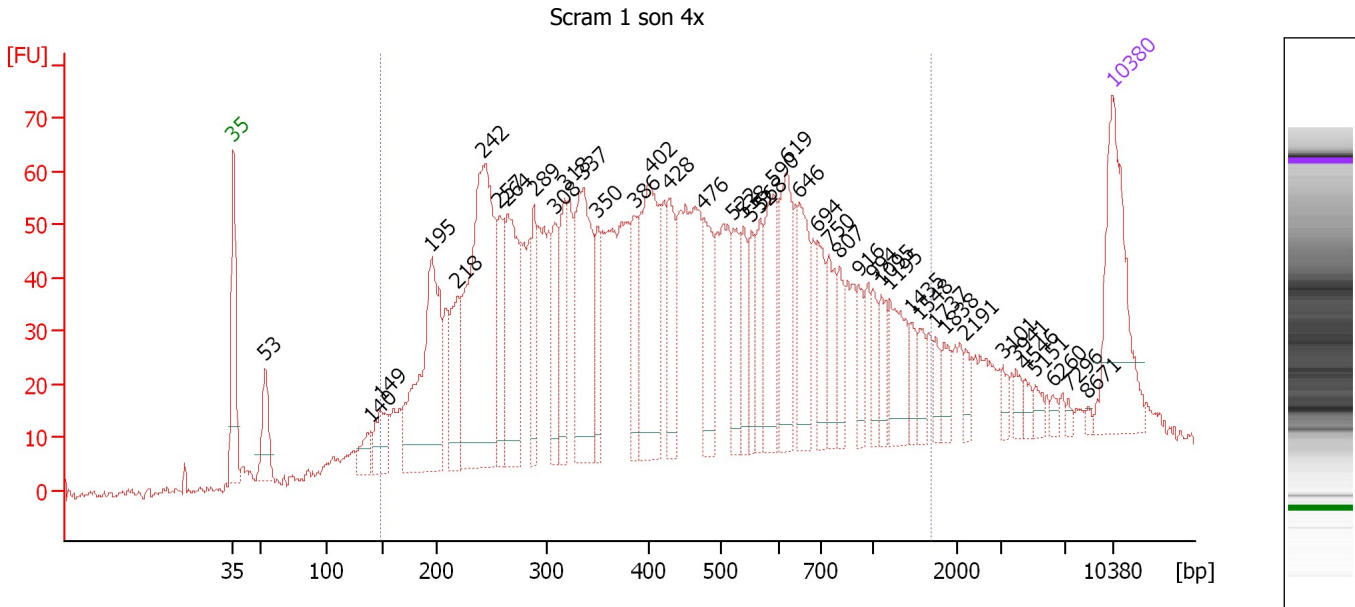
Region table for sample 1 : Scram 1 cDNA

From [bp]	Molarity [pmol/l]	Average Size [bp]	Conc. [pg/µl]	To [bp]	Corr. Area	% of Total	Size distribution in CV [%]	Color
177	12,367.6	469	2,857.00	1,276	1,588.1	89	48.1	

Assay Class: High Sensitivity DNA Assay
 Data Path: C:\...ents and Settings\Bioanalyzer\2012-03-09\2012-03-09_006.xad

Created: 3/9/2012 3:28:08 PM
 Modified: 3/9/2012 4:13:29 PM

Electropherogram Summary Continued ...



Overall Results for sample 2 : Scram 1 son 4x

Number of peaks found: 43 Corr. Area 1: 2,358.2
 Noise: 0.8

Peak table for sample 2 : Scram 1 son 4x


Peak	Size [bp]	Conc. [pg/μl]	Molarity [pmol/l]	Observations
1	35	125.00	5,411.3	Lower Marker
2	53	43.36	1,235.5	
3	140	21.99	237.9	
4	149	37.14	378.5	
5	195	176.75	1,376.4	
6	218	56.47	391.8	
7	242	262.63	1,642.4	
8	257	53.59	316.1	
9	264	111.82	641.2	
10	289	44.57	234.0	
11	308	42.08	206.9	
12	318	50.47	240.8	
13	337	119.17	536.6	
14	350	36.93	159.8	
15	386	38.26	150.3	
16	402	121.61	458.1	
17	428	48.39	171.3	
18	476	51.98	165.5	
19	522	37.07	107.6	
20	538	29.37	82.6	
21	552	26.44	72.6	
22	568	30.99	82.7	
23	590	54.53	140.0	
24	619	66.04	161.8	
25	646	54.93	128.8	
26	694	33.18	72.4	

Assay Class: High Sensitivity DNA Assay
 Data Path: C:\...ents and Settings\Bioanalyzer\2012-03-09\2012-03-09_006.xad


Created: 3/9/2012 3:28:08 PM
 Modified: 3/9/2012 4:13:29 PM

Electropherogram Summary Continued ...

... Peak table for sample 2 : Scram 1 son 4x

Peak	Size [bp]	Conc. [pg/µl]	Molarity [pmol/l]	Observations
27	750	29.58	59.7	
28	807	21.25	39.9	
29	916	15.79	26.1	
30	994	14.57	22.2	
31	1,095	17.79	24.6	
32	1,195	36.36	46.1	
33	1,435	11.92	12.6	
34	1,548	12.60	12.3	
35	1,737	8.96	7.8	
36	1,838	11.94	9.8	
37	2,191	8.48	5.9	
38	3,101	6.30	3.1	
39	3,941	5.93	2.3	
40	4,546	5.72	1.9	
41	5,151	5.91	1.7	
42	6,260	4.03	1.0	
43	7,296	2.50	0.5	
44	8,671	1.95	0.3	
45	 10,380	75.00	10.9	Upper Marker

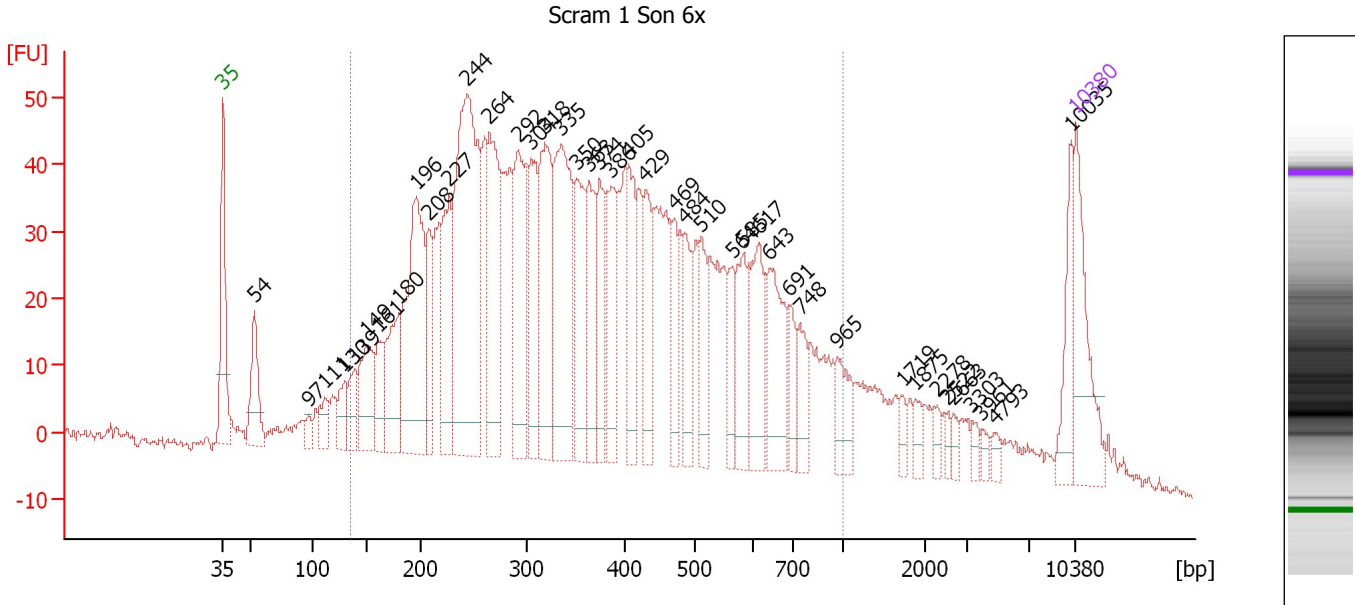
Region table for sample 2 : Scram 1 son 4x

From [bp]	Molarity [pmol/l]	Average Size [bp]	Conc. [pg/µl]	To [bp]	Corr. Area	% of Total	Size distribution in CV [%]	Color
148	11,231.2	490	2,510.45	1,677	2,358.2	90	59.0	

Assay Class: High Sensitivity DNA Assay
 Data Path: C:\...ents and Settings\Bioanalyzer\2012-03-09\2012-03-09_006.xad

Created: 3/9/2012 3:28:08 PM
 Modified: 3/9/2012 4:13:29 PM

Electropherogram Summary Continued ...



Overall Results for sample 3 : Scram 1 Son 6x

Number of peaks found: 42 Corr. Area 1: 1,955.0
 Noise: 1.0

Peak table for sample 3 : Scram 1 Son 6x

Peak	Size [bp]	Conc. [pg/μl]	Molarity [pmol/l]	Observations
1	35	125.00	5,411.3	Lower Marker
2	54	80.10	2,268.3	
3	97	13.38	209.8	
4	111	32.95	450.4	
5	130	36.39	425.5	
6	139	41.38	451.3	
7	149	88.53	898.5	
8	161	51.72	487.5	
9	180	99.50	839.2	
10	196	245.40	1,901.1	
11	208	69.47	507.0	
12	227	124.05	827.3	
13	244	392.96	2,437.5	
14	264	174.76	1,001.6	
15	292	158.13	820.5	
16	304	96.11	479.3	
17	318	152.50	725.7	
18	335	202.70	916.3	
19	350	104.42	451.7	
20	363	86.24	359.7	
21	374	62.41	253.1	
22	386	81.88	321.4	
23	405	78.34	293.4	
24	429	67.59	238.8	
25	469	48.88	157.8	
26	484	57.69	180.4	

Assay Class: High Sensitivity DNA Assay
 Data Path: C:\...ents and Settings\Bioanalyzer\2012-03-09\2012-03-09_006.xad


Created: 3/9/2012 3:28:08 PM
 Modified: 3/9/2012 4:13:29 PM

Electropherogram Summary Continued ...

... Peak table for sample 3 : Scram 1 Son 6x

Peak	Size [bp]	Conc. [pg/µl]	Molarity [pmol/l]	Observations
27	510	54.96	163.3	
28	564	38.17	102.5	
29	585	61.55	159.5	
30	617	79.52	195.3	
31	643	85.12	200.7	
32	691	32.71	71.7	
33	748	33.06	67.0	
34	965	37.09	58.2	
35	1,719	9.16	8.1	
36	1,875	11.19	9.0	
37	2,278	10.05	6.7	
38	2,522	7.05	4.2	
39	2,663	7.78	4.4	
40	3,303	7.31	3.4	
41	3,961	7.12	2.7	
42	4,793	7.49	2.4	
43	10,035	43.23	6.5	
44	10,380	75.00	10.9	Upper Marker

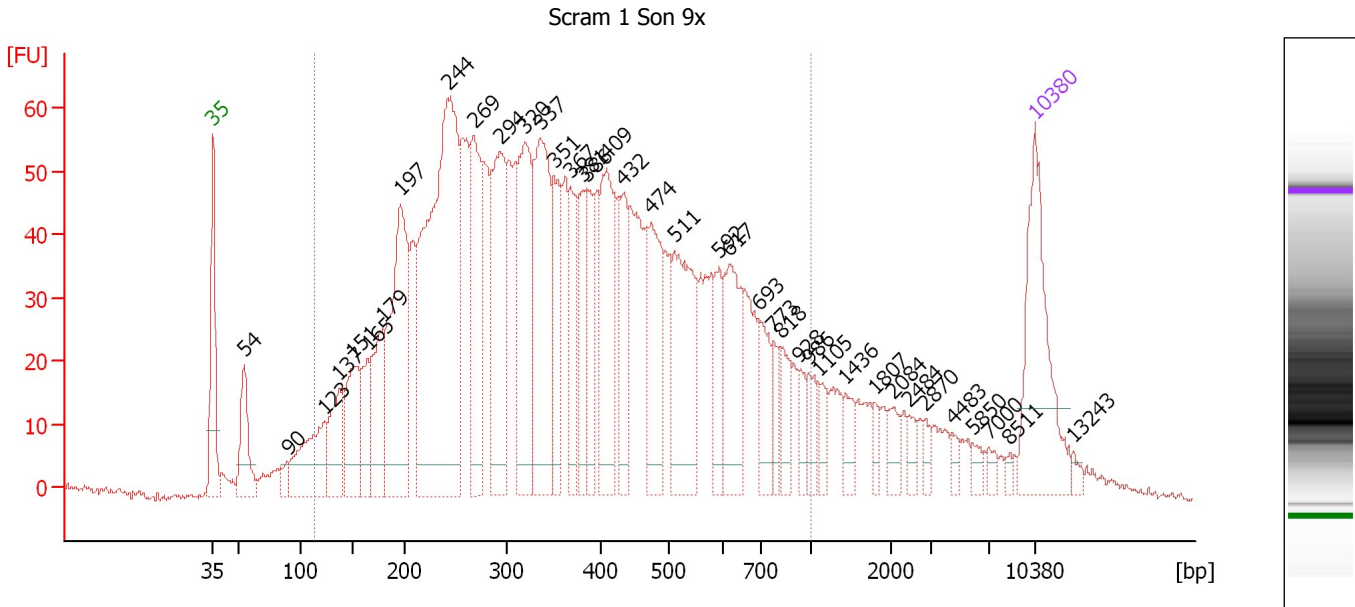
Region table for sample 3 : Scram 1 Son 6x

From [bp]	Molarity [pmol/l]	Average Size [bp]	Conc. [pg/µl]	To [bp]	Corr. Area	% of Total	Size distribution in CV [%]	Color
135	18,553.3	394	3,694.03	1,000	1,955.0	86	43.9	

Assay Class: High Sensitivity DNA Assay
 Data Path: C:\...ents and Settings\Bioanalyzer\2012-03-09\2012-03-09_006.xad

Created: 3/9/2012 3:28:08 PM
 Modified: 3/9/2012 4:13:29 PM

Electropherogram Summary Continued ...



Overall Results for sample 4 : Scram 1 Son 9x

Number of peaks found: 39 Corr. Area 1: 2,318.1
 Noise: 0.6

Peak table for sample 4 : Scram 1 Son 9x

Peak	Size [bp]	Conc. [pg/μl]	Molarity [pmol/l]	Observations
1	35	125.00	5,411.3	Lower Marker
2	54	54.09	1,517.1	
3	90	8.98	151.1	
4	123	75.72	931.6	
5	137	47.71	525.8	
6	151	64.07	641.6	
7	165	37.29	341.9	
8	179	64.12	542.1	
9	197	172.43	1,324.2	
10	244	372.00	2,312.8	
11	269	105.67	595.8	
12	294	128.92	663.7	
13	320	116.03	550.0	
14	337	134.06	603.6	
15	351	57.83	249.9	
16	367	44.29	182.6	
17	381	49.05	195.1	
18	386	39.41	154.7	
19	409	93.44	346.5	
20	432	56.11	196.7	
21	474	73.75	235.7	
22	511	99.20	294.2	
23	592	29.48	75.4	
24	617	62.70	154.0	
25	693	33.35	72.9	
26	773	15.63	30.6	

Assay Class: High Sensitivity DNA Assay
 Data Path: C:\...ents and Settings\Bioanalyzer\2012-03-09\2012-03-09_006.xad


Created: 3/9/2012 3:28:08 PM
 Modified: 3/9/2012 4:13:29 PM

Electropherogram Summary Continued ...

... Peak table for sample 4 : Scram 1 Son 9x

Peak	Size [bp]	Conc. [pg/μl]	Molarity [pmol/l]	Observations
27	818	22.41	41.5	
28	928	12.51	20.4	
29	986	15.43	23.7	
30	1,105	11.84	16.2	
31	1,436	12.14	12.8	
32	1,807	6.49	5.4	
33	2,084	10.85	7.9	
34	2,484	6.56	4.0	
35	2,870	5.92	3.1	
36	4,483	4.58	1.5	
37	5,850	5.17	1.3	
38	7,000	4.88	1.1	
39	8,511	2.64	0.5	
40	10,380	75.00	10.9	Upper Marker
41	13,243	0.00	0.0	

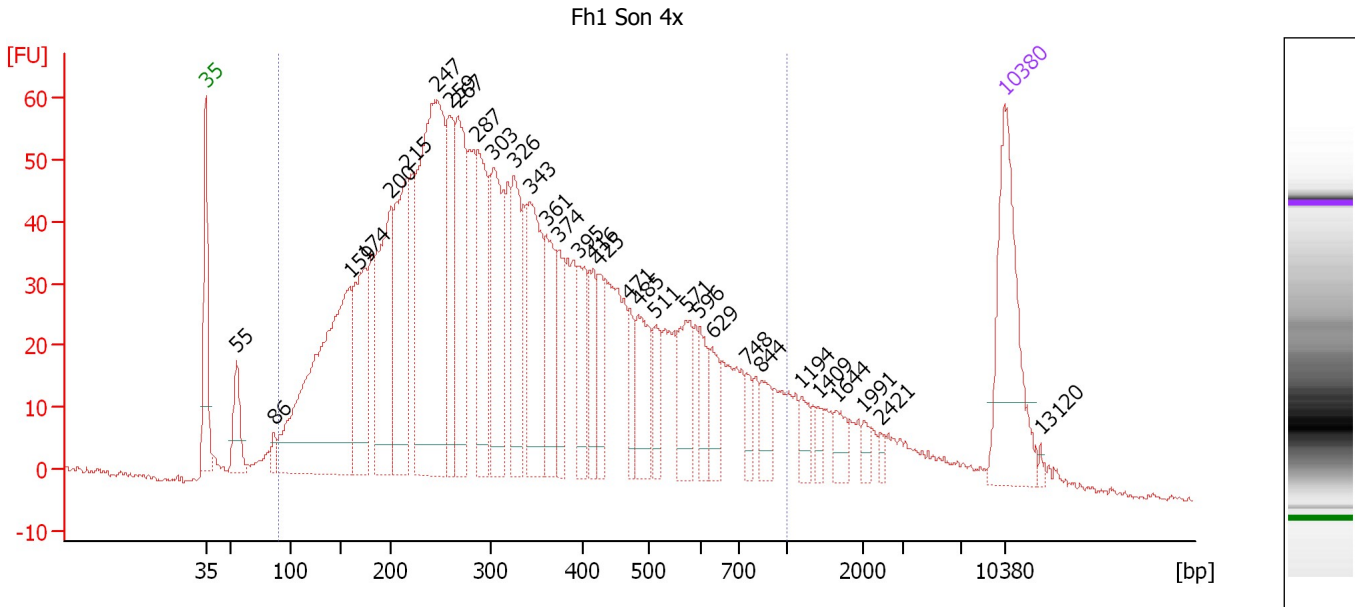
Region table for sample 4 : Scram 1 Son 9x

From [bp]	Molarity [pmol/l]	Average Size [bp]	Conc. [pg/μl]	To [bp]	Corr. Area	% of Total	Size distribution in CV [%]	Color
115	13,390.1	389	2,574.24	1,000	2,318.1	88	44.9	

Assay Class: High Sensitivity DNA Assay
 Data Path: C:\...ents and Settings\Bioanalyzer\2012-03-09\2012-03-09_006.xad

Created: 3/9/2012 3:28:08 PM
 Modified: 3/9/2012 4:13:29 PM

Electropherogram Summary Continued ...



Overall Results for sample 5 : Fh1 Son 4x

Number of peaks found: 32 Corr. Area 1: 2,195.0
 Noise: 0.5

Peak table for sample 5 : Fh1 Son 4x

Peak	Size [bp]	Conc. [pg/μl]	Molarity [pmol/l]	Observations
1	35	125.00	5,411.3	Lower Marker
2	55	38.00	1,051.6	
3	86	9.92	174.1	
4	159	282.96	2,697.4	
5	174	98.71	857.8	
6	200	133.40	1,011.3	
7	215	124.46	875.4	
8	247	288.19	1,771.1	
9	259	82.68	482.9	
10	267	101.98	577.7	
11	287	91.77	483.9	
12	303	102.04	510.1	
13	326	67.02	311.9	
14	343	95.61	422.4	
15	361	57.80	242.7	
16	374	36.91	149.7	
17	395	39.47	151.4	
18	416	31.75	115.5	
19	425	25.29	90.3	
20	471	19.85	63.9	
21	485	41.83	130.5	
22	511	20.13	59.7	
23	571	37.68	100.0	
24	596	20.22	51.4	
25	629	19.85	47.8	
26	748	10.39	21.1	

Assay Class: High Sensitivity DNA Assay
 Data Path: C:\...ents and Settings\Bioanalyzer\2012-03-09\2012-03-09_006.xad


Created: 3/9/2012 3:28:08 PM
 Modified: 3/9/2012 4:13:29 PM

Electropherogram Summary Continued ...

... Peak table for sample 5 : Fh1 Son 4x

Peak	Size [bp]	Conc. [pg/μl]	Molarity [pmol/l]	Observations
27	844	16.87	30.3	
28	1,194	11.71	14.9	
29	1,409	6.79	7.3	
30	1,644	10.65	9.8	
31	1,991	5.21	4.0	
32	2,421	3.42	2.1	
33	10,380	75.00	10.9	Upper Marker
34	13,120	0.00	0.0	

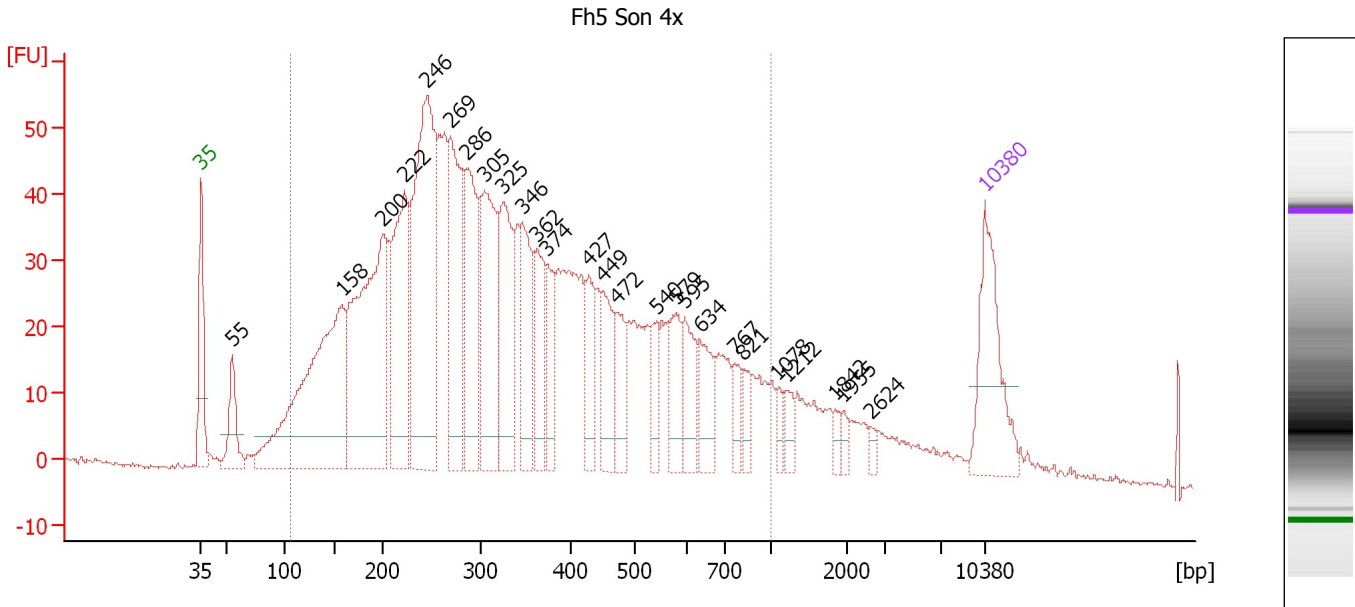
Region table for sample 5 : Fh1 Son 4x

From [bp]	Molarity [pmol/l]	Average Size [bp]	Conc. [pg/μl]	To [bp]	Corr. Area	% of Total	Size distribution in CV [%]	Color
90	14,657.0	352	2,436.06	1,000	2,195.0	91	49.6	

Assay Class: High Sensitivity DNA Assay
 Data Path: C:\...ents and Settings\Bioanalyzer\2012-03-09\2012-03-09_006.xad

Created: 3/9/2012 3:28:08 PM
 Modified: 3/9/2012 4:13:29 PM

Electropherogram Summary Continued ...



Overall Results for sample 6 : Fh5 Son 4x

Number of peaks found: 26 Corr. Area 1: 1,798.0
 Noise: 0.4

Peak table for sample 6 : Fh5 Son 4x

Peak	Size [bp]	Conc. [pg/μl]	Molarity [pmol/l]	Observations
1	35	125.00	5,411.3	Lower Marker
2	55	58.85	1,613.4	
3	158	367.90	3,528.5	
4	200	321.23	2,437.0	
5	222	179.80	1,226.3	
6	246	322.79	1,990.8	
7	269	158.99	894.9	
8	286	129.84	688.8	
9	305	143.28	711.4	
10	325	117.59	549.0	
11	346	84.21	369.0	
12	362	64.55	270.0	
13	374	50.12	203.0	
14	427	45.97	163.0	
15	449	58.45	197.3	
16	472	38.50	123.6	
17	540	24.86	69.8	
18	579	40.15	105.2	
19	595	45.55	116.0	
20	634	38.02	90.9	
21	767	19.23	38.0	
22	821	17.79	32.8	
23	1,078	9.91	13.9	
24	1,212	12.17	15.2	
25	1,842	6.43	5.3	
26	1,955	6.79	5.3	

Assay Class: High Sensitivity DNA Assay
 Data Path: C:\...ents and Settings\Bioanalyzer\2012-03-09\2012-03-09_006.xad

Created: 3/9/2012 3:28:08 PM
 Modified: 3/9/2012 4:13:29 PM

Electropherogram Summary Continued ...

... Peak table for sample 6 : Fh5 Son 4x

Peak	Size [bp]	Conc. [pg/μl]	Molarity [pmol/l]	Observations
27	2,624	4.84	2.8	
28	▶ 10,380	75.00	10.9	Upper Marker

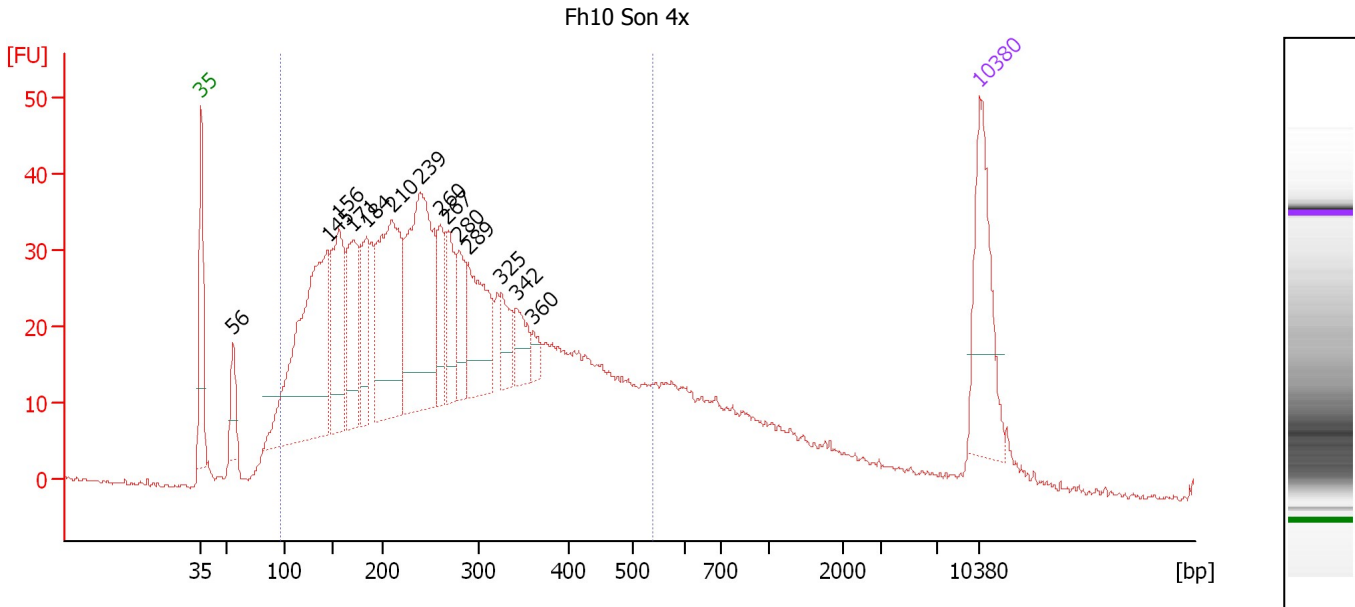
Region table for sample 6 : Fh5 Son 4x

From [bp]	Molarity [pmol/l]	Average Size [bp]	Conc. [pg/μl]	To [bp]	Corr. Area	% of Total	Size distribution in CV [%]	Color
106	16,919.0	362	2,941.37	1,000	1,798.0	89	48.8	■

Assay Class: High Sensitivity DNA Assay
 Data Path: C:\...ents and Settings\Bioanalyzer\2012-03-09\2012-03-09_006.xad

Created: 3/9/2012 3:28:08 PM
 Modified: 3/9/2012 4:13:29 PM

Electropherogram Summary Continued ...



Overall Results for sample 7 : Fh10 Son 4x

Number of peaks found: 14 Corr. Area 1: 1,304.7
 Noise: 0.3

Peak table for sample 7 : Fh10 Son 4x

Peak	Size [bp]	Conc. [pg/μl]	Molarity [pmol/l]	Observations
1	35	125.00	5,411.3	Lower Marker
2	56	37.38	1,005.0	
3	145	304.51	3,187.9	
4	156	121.79	1,181.9	
5	171	92.78	822.7	
6	184	65.23	537.3	
7	210	187.09	1,348.5	
8	239	211.41	1,338.0	
9	260	51.05	297.1	
10	267	48.93	277.7	
11	280	42.37	229.6	
12	289	91.41	478.4	
13	325	29.64	138.3	
14	342	29.54	130.9	
15	360	11.08	46.7	
16	10,380	75.00	10.9	Upper Marker

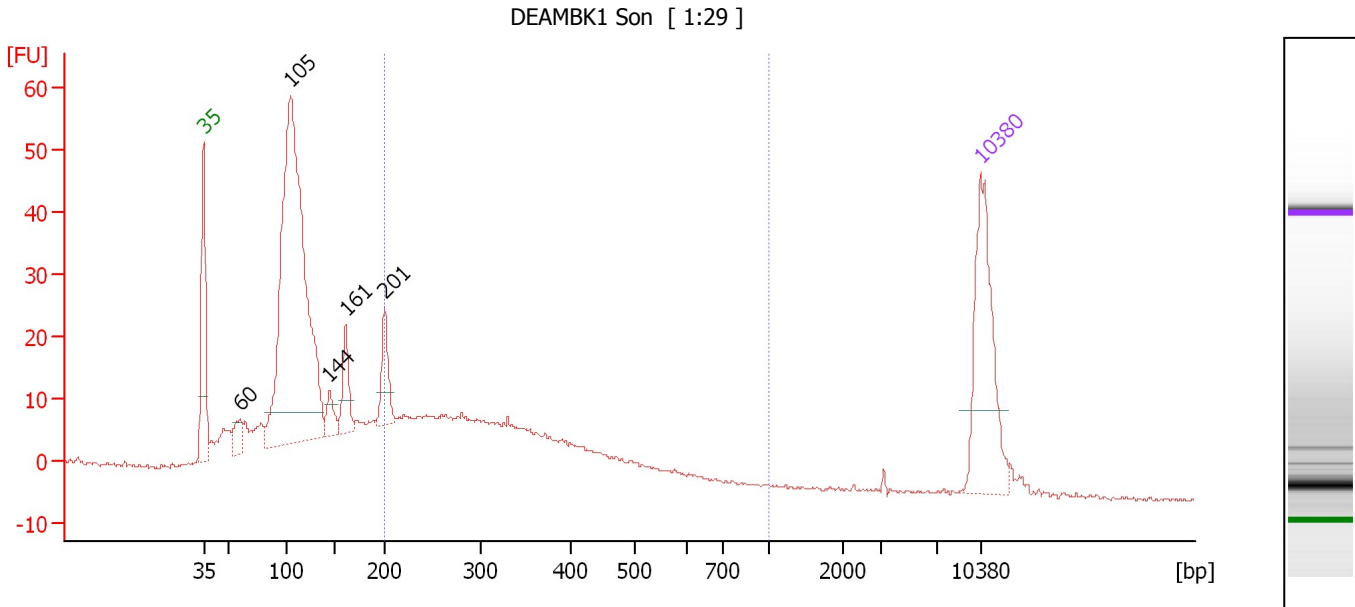
Region table for sample 7 : Fh10 Son 4x

From [bp]	Molarity [pmol/l]	Average Size [bp]	Conc. [pg/μl]	To [bp]	Corr. Area	% of Total	Size distribution in CV [%]	Color
97	16,766.2	271	2,333.99	539	1,304.7	81	39.8	Blue

Assay Class: High Sensitivity DNA Assay
 Data Path: C:\...ents and Settings\Bioanalyzer\2012-03-09\2012-03-09_006.xad

Created: 3/9/2012 3:28:08 PM
 Modified: 3/9/2012 4:13:29 PM

Electropherogram Summary Continued ...



Overall Results for sample 8 : DEAMBK1 Son

Number of peaks found: 5 Corr. Area 1: 270.0
 Noise: 0.3

Peak table for sample 8 : DEAMBK1 Son

Peak	Size [bp]	Conc. [pg/μl]	Molarity [pmol/l]	Observations
1	35	125.00	5,411.3	Lower Marker
2	60	19.09	481.0	
3	105	489.44	7,067.8	
4	144	17.11	179.5	
5	161	33.13	311.1	
6	201	34.47	259.5	
7	10,380	75.00	10.9	Upper Marker

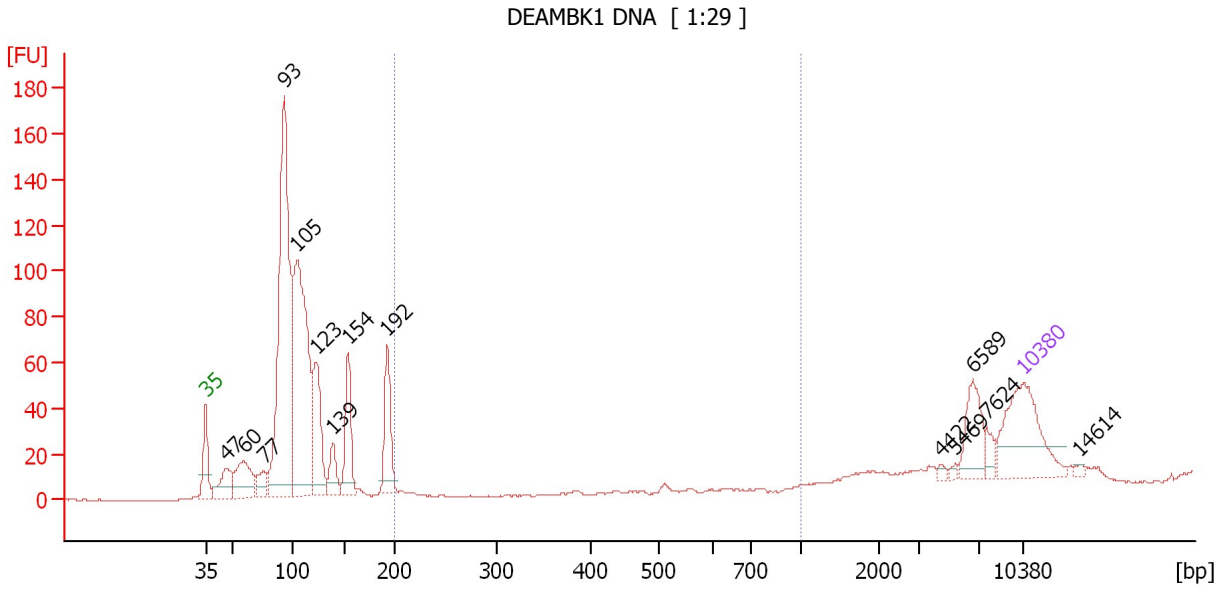
Region table for sample 8 : DEAMBK1 Son

From [bp]	Molarity [pmol/l]	Average Size [bp]	Conc. [pg/μl]	To [bp]	Corr. Area	% of Total	Size distribution in CV [%]	Color
200	1,964.7	329	379.29	1,000	270.0	36	32.2	Blue

Assay Class: High Sensitivity DNA Assay
 Data Path: C:\...ents and Settings\Bioanalyzer\2012-03-09\2012-03-09_006.xad

Created: 3/9/2012 3:28:08 PM
 Modified: 3/9/2012 4:13:29 PM

Electropherogram Summary Continued ...



Overall Results for sample 9 : DEAMBK1 DNA

Number of peaks found: 14 Corr. Area 1: 1.0
 Noise: 0.2

Peak table for sample 9 : DEAMBK1 DNA

Peak	Size [bp]	Conc. [pg/μl]	Molarity [pmol/l]	Observations
1	35	125.00	5,411.3	Lower Marker
2	47	46.73	1,495.5	
3	60	65.90	1,655.6	
4	77	26.01	514.4	
5	93	444.30	7,209.9	
6	105	344.22	4,961.4	
7	123	106.96	1,316.2	
8	139	32.90	358.4	
9	154	71.72	705.5	
10	192	70.69	556.6	
11	4,422	2.98	1.0	
12	5,469	2.78	0.8	
13	6,589	38.34	8.8	
14	7,624	9.46	1.9	
15	10,380	75.00	10.9	Upper Marker
16	14,614	0.00	0.0	

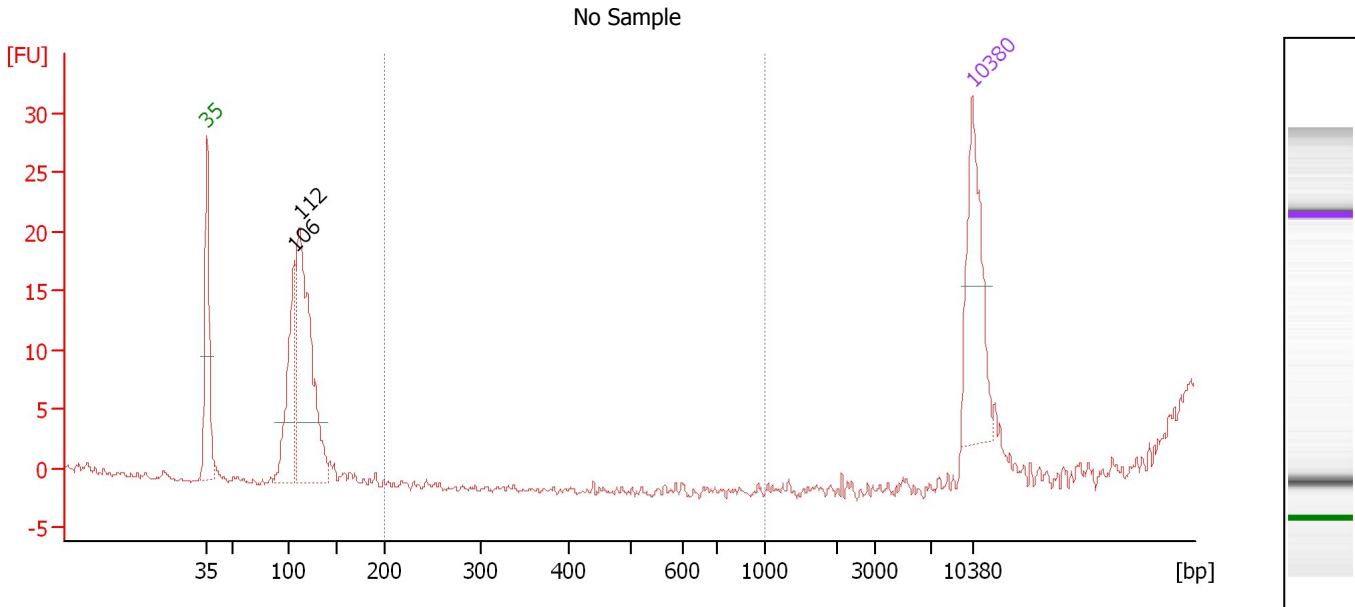
Region table for sample 9 : DEAMBK1 DNA

From [bp]	Molarity [pmol/l]	Average Size [bp]	Conc. [pg/μl]	To [bp]	Corr. Area	% of Total	Size distribution in CV [%]	Color
200	6.4	301	0.99	1,000	1.0	0	47.9	Blue

Assay Class: High Sensitivity DNA Assay
 Data Path: C:\...ents and Settings\Bioanalyzer\2012-03-09\2012-03-09_006.xad

Created: 3/9/2012 3:28:08 PM
 Modified: 3/9/2012 4:13:29 PM

Electropherogram Summary Continued ...



Overall Results for sample 10 : No Sample

Number of peaks found: 2 Corr. Area 1: 0.0
 Noise: 0.2

Peak table for sample 10 : No Sample

Peak	Size [bp]	Conc. [pg/μl]	Molarity [pmol/l]	Observations
1	35	125.00	5,411.3	Lower Marker
2	106	110.52	1,575.6	
3	112	241.77	3,277.3	
4	10,380	75.00	10.9	Upper Marker

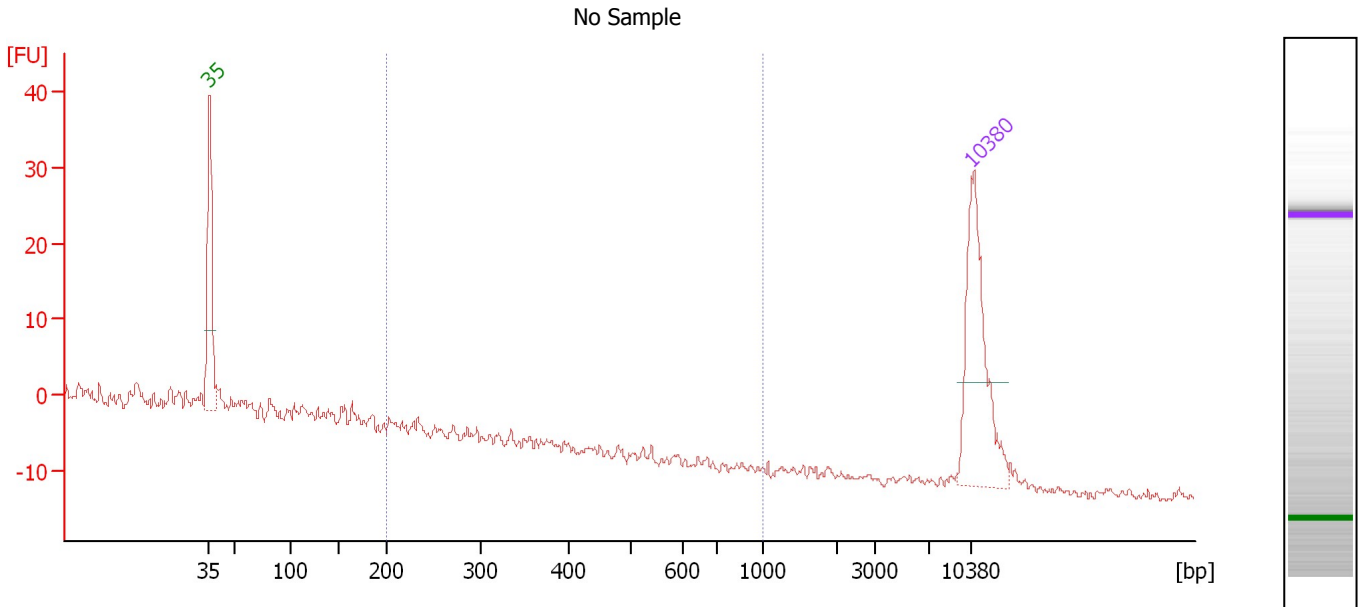
Region table for sample 10 : No Sample

From [bp]	Molarity [pmol/l]	Average Size [bp]	Conc. [pg/μl]	To [bp]	Corr. Area	% of Total	Size distribution in CV [%]	Color
200	0.0	0	0.00	1,000	0.0	0	0.0	Blue

Assay Class: High Sensitivity DNA Assay
 Data Path: C:\...ents and Settings\Bioanalyzer\2012-03-09\2012-03-09_006.xad

Created: 3/9/2012 3:28:08 PM
 Modified: 3/9/2012 4:13:29 PM

Electropherogram Summary Continued ...



Overall Results for sample 11 : No Sample

Number of peaks found: 0 Corr. Area 1: 3.3
 Noise: 0.5

Peak table for sample 11 : No Sample

Peak	Size [bp]	Conc. [pg/μl]	Molarity [pmol/l]	Observations
1	35	125.00	5,411.3	Lower Marker
2	10,380	75.00	10.9	Upper Marker

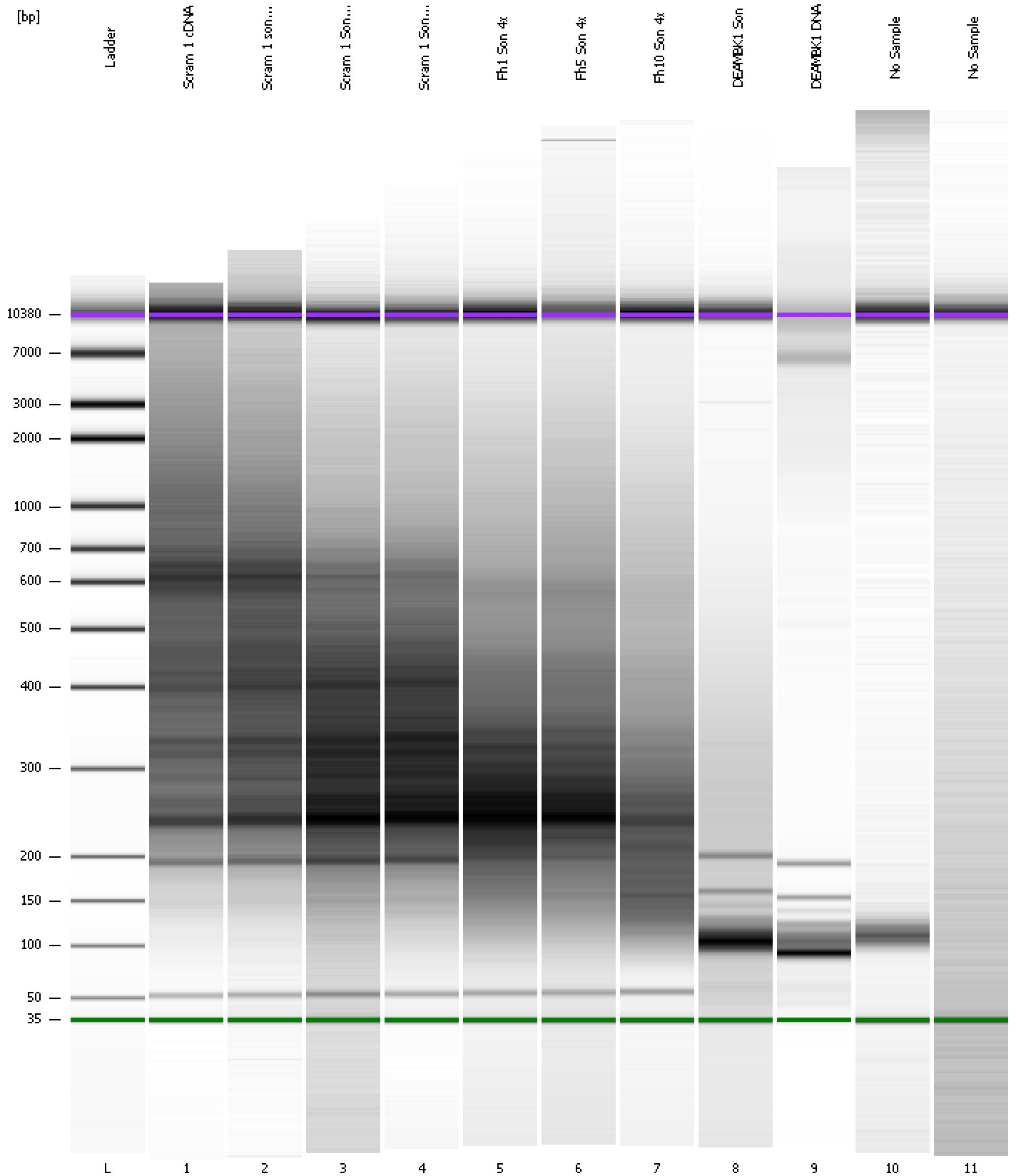
Region table for sample 11 : No Sample

From [bp]	Molarity [pmol/l]	Average Size [bp]	Conc. [pg/μl]	To [bp]	Corr. Area	% of Total	Size distribution in CV [%]	Color
200	34.6	276	5.82	1,000	3.3	6	30.7	Blue

Assay Class: High Sensitivity DNA Assay
Data Path: C:\...ents and Settings\Bioanalyzer\2012-03-09\2012-03-09_006.xad

Created: 3/9/2012 3:28:08 PM
Modified: 3/9/2012 4:13:29 PM

Gel Image



Assay Class: High Sensitivity DNA Assay Created: 3/9/2012 3:28:08 PM
 Data Path: C:\...ents and Settings\Bioanalyzer\2012-03-09\2012-03-09_006.xad Modified: 3/9/2012 4:13:29 PM

Run Logbook

Description	Number	Source	Category	Sub Category	Time	Time Zone	User	Host
Run ended on port 1 (Number of wells acquired: 12)		Instrument	Run		3/9/2012 4:09:25 PM	(GMT --08:00) Pacific Standard Time	UC Davis	D8XSMGH1
Run started on port 1 (File: C:\Documents and Settings\Bioanalyzer\2012-03-09\2012-03-09_006.xad)		Instrument	Run		3/9/2012 3:28:13 PM	(GMT --08:00) Pacific Standard Time	UC Davis	D8XSMGH1
Product Number : G2938B		Instrument	Run		3/9/2012 3:28:13 PM	(GMT --08:00) Pacific Standard Time	UC Davis	D8XSMGH1
Name :		Instrument	Run		3/9/2012 3:28:13 PM	(GMT --08:00) Pacific Standard Time	UC Davis	D8XSMGH1
Vendor : Agilent Technologies		Instrument	Run		3/9/2012 3:28:13 PM	(GMT --08:00) Pacific Standard Time	UC Davis	D8XSMGH1
Serial# : DE13701086		Instrument	Run		3/9/2012 3:28:13 PM	(GMT --08:00) Pacific Standard Time	UC Davis	D8XSMGH1
Firmware : C.01.069		Instrument	Run		3/9/2012 3:28:13 PM	(GMT --08:00) Pacific Standard Time	UC Davis	D8XSMGH1
Cartridge : Electrode		Instrument	Run		3/9/2012 3:28:13 PM	(GMT --08:00) Pacific Standard Time	UC Davis	D8XSMGH1