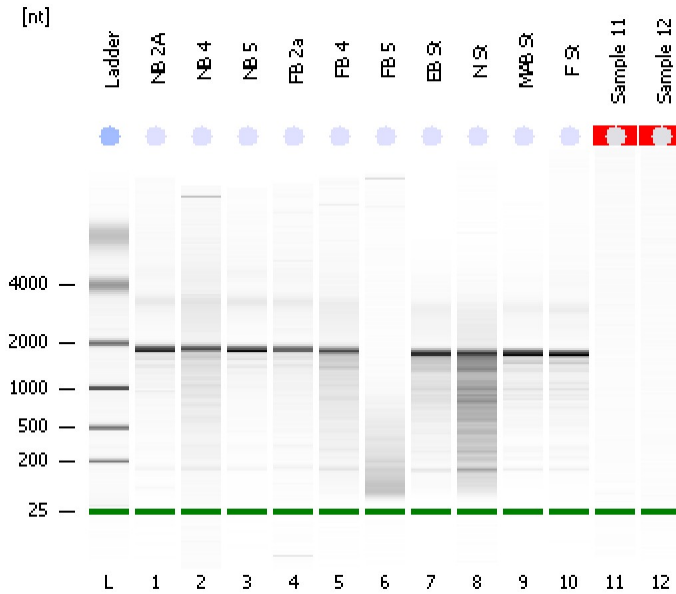


Assay Class: Eukaryote Total RNA Nano  
Data Path: C:\...ents and Settings\Bioanalyzer\2012-03-12\2012-03-12\_002.xad

Created: 3/12/2012 11:43:18 AM  
Modified: 3/12/2012 2:10:25 PM

Electrophoresis File Run Summary



Instrument Information:

Instrument Name: DE13701086      Firmware: C.01.069  
Serial#: DE13701086      Type: G2938B

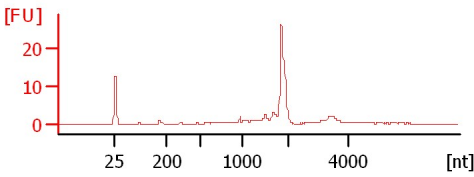
Assay Information:

Assay Origin Path: C:\Program Files\Agilent\2100 bioanalyzer\2100 expert\assays\RNA\Eukaryote Total RNA Nano Series II.xsy  
Assay Class: Eukaryote Total RNA Nano  
Version: 2.6  
Assay Comments: Total RNA Analysis ng sensitivity (Eukaryote)  
© Copyright 2003 - 2009 Agilent Technologies, Inc.

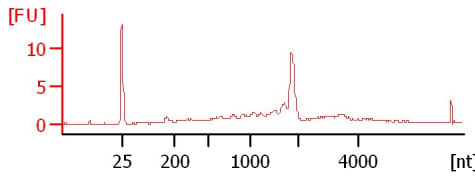
Chip Information:

Chip Lot #:   
Reagent Kit Lot #:   
Chip Comments:

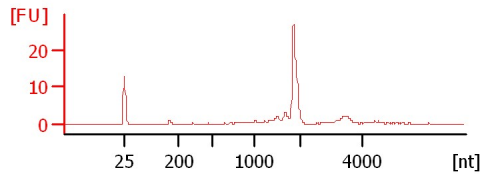
**NB 2A**  
RIN: 7.60



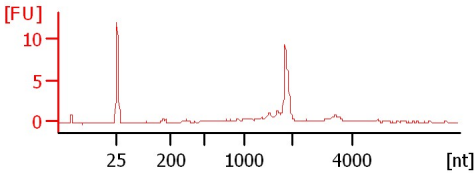
**NB 4**  
RIN: 6.50



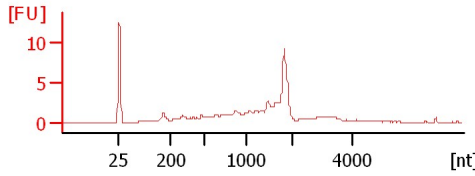
**NB 5**  
RIN: 7.90



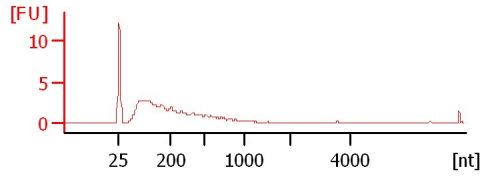
**FB 2a**  
RIN: 7.30



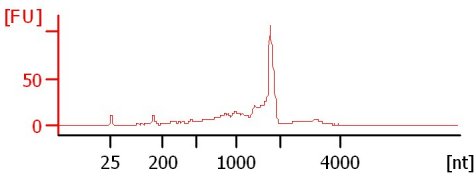
**FB 4**  
RIN: 6.70



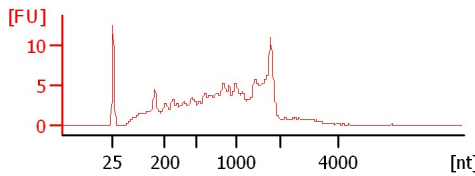
**FB 5**  
RIN: 2.10



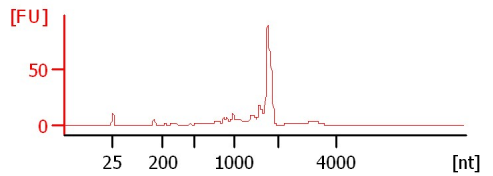
**EB St**  
RIN: 6.30



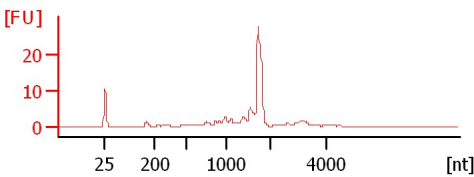
**N St**  
RIN: 5



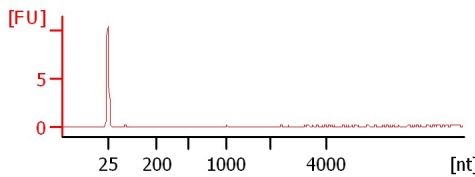
**MAB St**  
RIN: 6.60



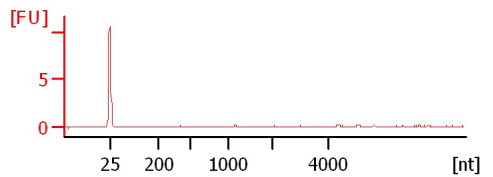
**F St**  
RIN: 6.80



**Sample 11**  
RIN N/A



**Sample 12**  
RIN N/A



Assay Class: Eukaryote Total RNA Nano  
Data Path: C:\...ents and Settings\Bioanalyzer\2012-03-12\2012-03-12\_002.xad

Created: 3/12/2012 11:43:18 AM  
Modified: 3/12/2012 2:10:25 PM

**Electrophoresis File Run Summary (Chip Summary)**

Sample Name	Sample Comment	Status	Result Label	Result Color
NB 2A		✓	RIN: 7.60	
NB 4		✓	RIN: 6.50	
NB 5		✓	RIN: 7.90	
FB 2a		✓	RIN: 7.30	
FB 4		✓	RIN: 6.70	
FB 5		✓	RIN: 2.10	
EB St		✓	RIN: 6.30	
N St		✓	RIN:5	
MAB St		✓	RIN: 6.60	
F St		✓	RIN: 6.80	
Sample 11		✓	RIN N/A	
Sample 12		✓	RIN N/A	
Ladder		✓	All Other Samples	

**Chip Lot #**

**Reagent Kit Lot #**

**Chip Comments :**

Assay Class: Eukaryote Total RNA Nano  
Data Path: C:\...ents and Settings\Bioanalyzer\2012-03-12\2012-03-12\_002.xad

Created: 3/12/2012 11:43:18 AM  
Modified: 3/12/2012 2:10:25 PM

**Electrophoresis Assay Details**

**General Analysis Settings**

Number of Available Sample and Ladder Wells (Max.) : 13  
Minimum Visible Range [s] : 17  
Maximum Visible Range [s] : 70  
Start Analysis Time Range [s] : 19  
End Analysis Time Range [s] : 69  
Ladder Concentration [ng/μl] : 150  
Lower Marker Concentration [ng/μl] : 0  
Upper Marker Concentration [ng/μl] : 0  
Used Lower Marker for Quantitation  
Standard Curve Fit is Logarithmic  
Show Data Aligned to Lower Marker

**Integrator Settings**

Integration Start Time [s] : 19  
Integration End Time [s] : 69  
Slope Threshold : 0.6  
Height Threshold [FU] : 0.5  
Area Threshold : 0.2  
Width Threshold [s] : 0.5  
Baseline Plateau [s] : 6

**Filter Settings**

Filter Width [s] : 0.5  
Polynomial Order : 4

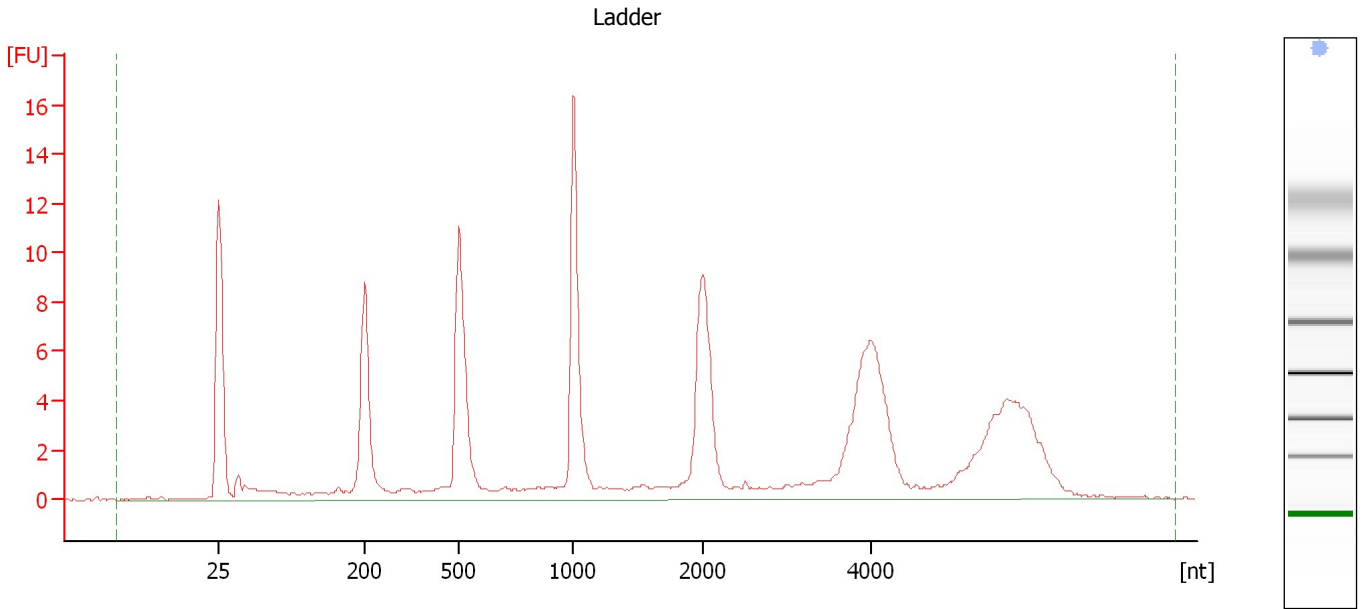
**Ladder**

Ladder Peak	Size
1	25
2	200
3	500
4	1000
5	2000
6	4000

Assay Class: Eukaryote Total RNA Nano  
Data Path: C:\...ents and Settings\Bioanalyzer\2012-03-12\2012-03-12\_002.xad

Created: 3/12/2012 11:43:18 AM  
Modified: 3/12/2012 2:10:25 PM

**Electropherogram Summary**



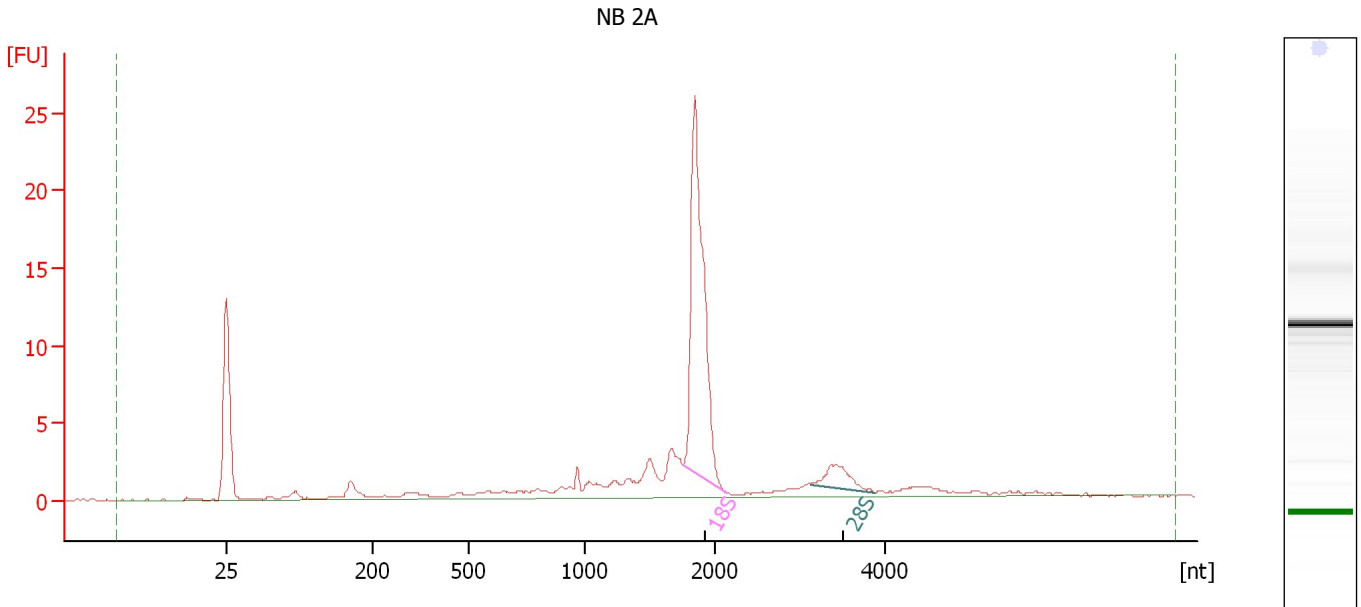
**Overall Results for Ladder**

RNA Area:	135.6	Result Flagging Color:	<span style="background-color: #add8e6; border: 1px solid black; display: inline-block; width: 20px; height: 10px;"></span>
RNA Concentration:	150 ng/μl	Result Flagging Label:	All Other Samples

Assay Class: Eukaryote Total RNA Nano  
 Data Path: C:\...ents and Settings\Bioanalyzer\2012-03-12\2012-03-12\_002.xad

Created: 3/12/2012 11:43:18 AM  
 Modified: 3/12/2012 2:10:25 PM

**Electropherogram Summary Continued ...**



**Overall Results for sample 1 : NB 2A**

RNA Area:	84.2	RNA Integrity Number (RIN):	7.6 (B.02.08, Anomaly Threshold(s) manually adapted)
RNA Concentration:	93 ng/μl	Result Flagging Color:	<span style="background-color: #ccccff; border: 1px solid black; display: inline-block; width: 20px; height: 10px;"></span>
rRNA Ratio [28s / 18s]:	0.1	Result Flagging Label:	RIN: 7.60

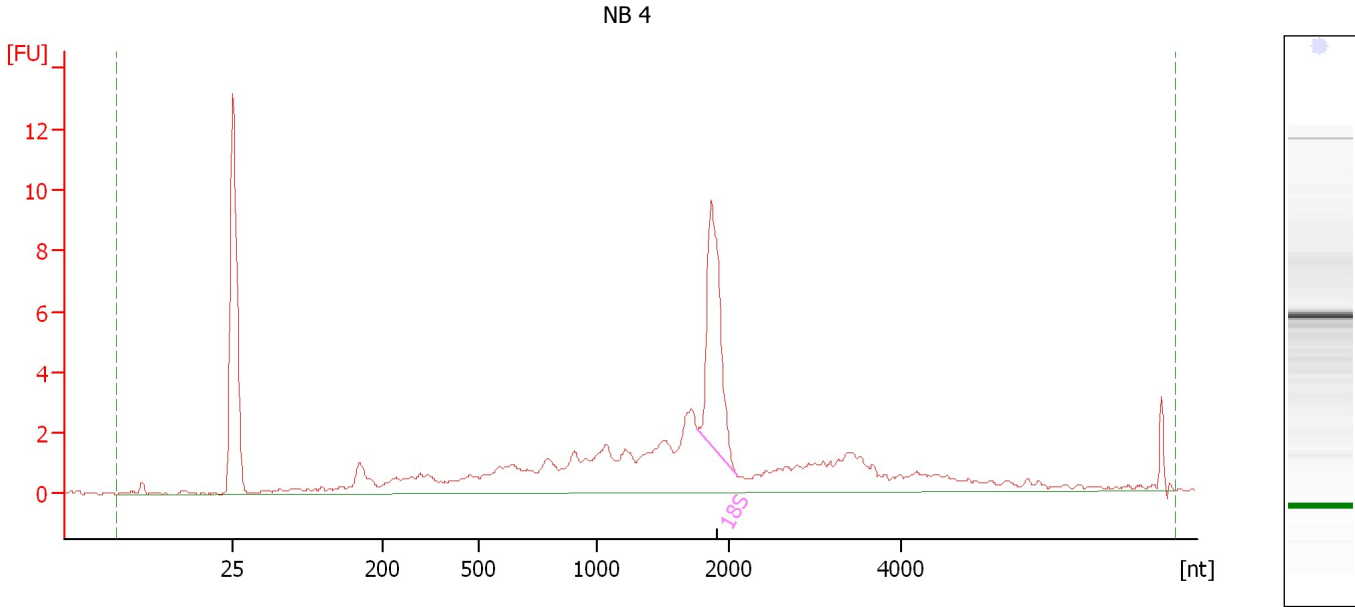
**Fragment table for sample 1 : NB 2A**

Name	Start Size [nt]	End Size [nt]	Area	% of total Area
18S	1,750	2,131	34.4	40.8
28S	3,125	3,880	3.7	4.4

Assay Class: Eukaryote Total RNA Nano  
Data Path: C:\...ents and Settings\Bioanalyzer\2012-03-12\2012-03-12\_002.xad

Created: 3/12/2012 11:43:18 AM  
Modified: 3/12/2012 2:10:25 PM

**Electropherogram Summary Continued ...**



**Overall Results for sample 2 : NB 4**

RNA Area:	75.1	RNA Integrity Number (RIN):	6.5 (B.02.08)
RNA Concentration:	83 ng/μl	Result Flagging Color:	<span style="background-color: #ccccff; border: 1px solid black; display: inline-block; width: 20px; height: 10px;"></span>
rRNA Ratio [28s / 18s]:	0.0	Result Flagging Label:	RIN: 6.50

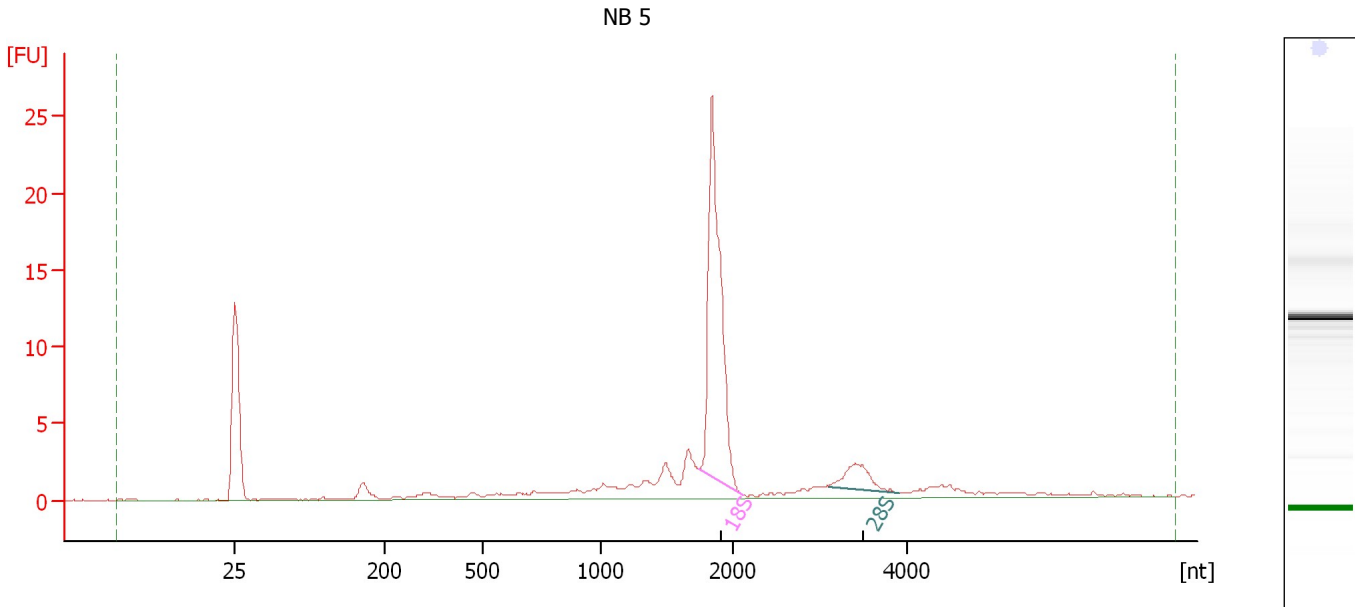
**Fragment table for sample 2 : NB 4**

Name	Start Size [nt]	End Size [nt]	Area	% of total Area
18S	1,757	2,085	12.1	16.1

Assay Class: Eukaryote Total RNA Nano  
 Data Path: C:\...ents and Settings\Bioanalyzer\2012-03-12\2012-03-12\_002.xad

Created: 3/12/2012 11:43:18 AM  
 Modified: 3/12/2012 2:10:25 PM

**Electropherogram Summary Continued ...**



**Overall Results for sample 3 : NB 5**

RNA Area:	74.8	RNA Integrity Number (RIN):	7.9 (B.02.08, Anomaly Threshold(s) manually adapted)
RNA Concentration:	83 ng/μl	Result Flagging Color:	<span style="background-color: #ccccff; border: 1px solid black; display: inline-block; width: 20px; height: 10px;"></span>
rRNA Ratio [28s / 18s]:	0.1	Result Flagging Label:	RIN: 7.90

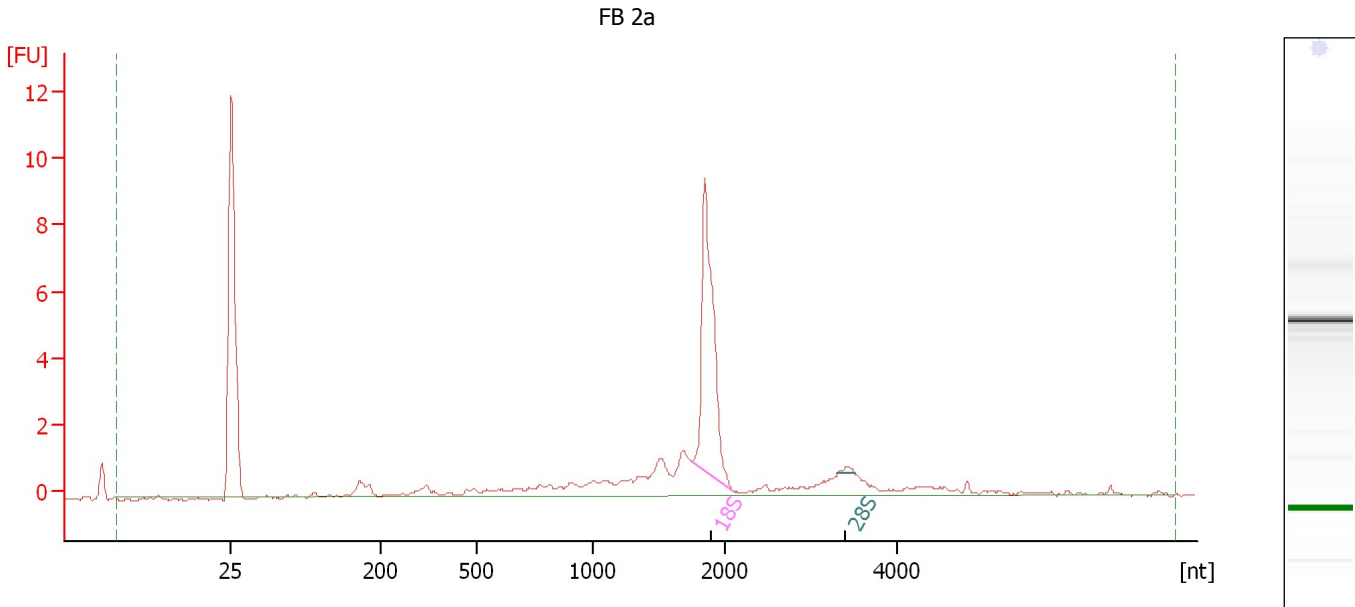
**Fragment table for sample 3 : NB 5**

Name	Start Size [nt]	End Size [nt]	Area	% of total Area
18S	1,743	2,111	33.2	44.4
28S	3,100	3,916	4.2	5.6

Assay Class: Eukaryote Total RNA Nano  
 Data Path: C:\...ents and Settings\Bioanalyzer\2012-03-12\2012-03-12\_002.xad

Created: 3/12/2012 11:43:18 AM  
 Modified: 3/12/2012 2:10:25 PM

**Electropherogram Summary Continued ...**



**Overall Results for sample 4 : FB 2a**

RNA Area:	35.2	RNA Integrity Number (RIN):	7.3 (B.02.08, Anomaly Threshold(s) manually adapted)
RNA Concentration:	39 ng/μl	Result Flagging Color:	<span style="background-color: #ccccff; border: 1px solid black; display: inline-block; width: 20px; height: 10px;"></span>
rRNA Ratio [28s / 18s]:	0.0	Result Flagging Label:	RIN: 7.30

**Fragment table for sample 4 : FB 2a**

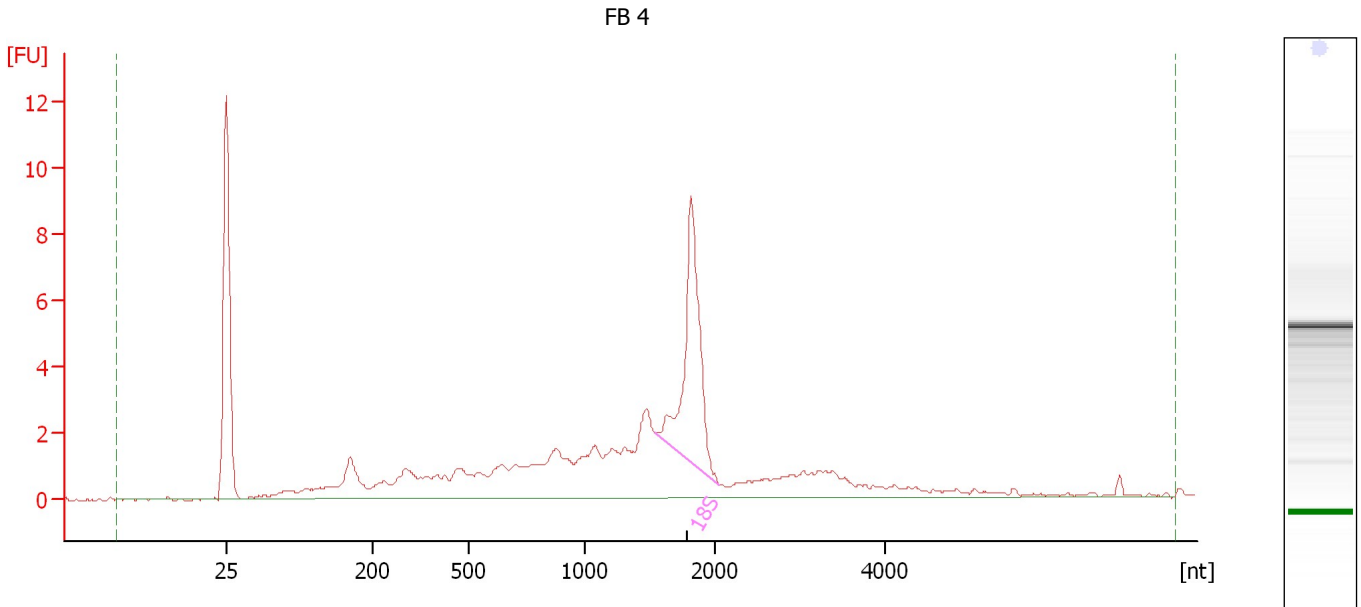
Name	Start Size [nt]	End Size [nt]	Area	% of total Area
18S	1,747	2,096	11.5	32.7
28S	3,305	3,504	0.2	0.4



Assay Class: Eukaryote Total RNA Nano  
 Data Path: C:\...ents and Settings\Bioanalyzer\2012-03-12\2012-03-12\_002.xad

Created: 3/12/2012 11:43:18 AM  
 Modified: 3/12/2012 2:10:25 PM

**Electropherogram Summary Continued ...**



**Overall Results for sample 5 : FB 4**

RNA Area:	74.9	RNA Integrity Number (RIN):	6.7 (B.02.08)
RNA Concentration:	83 ng/μl	Result Flagging Color:	<span style="background-color: #ccccff; border: 1px solid black; display: inline-block; width: 20px; height: 10px;"></span>
rRNA Ratio [28s / 18s]:	0.0	Result Flagging Label:	RIN: 6.70

**Fragment table for sample 5 : FB 4**

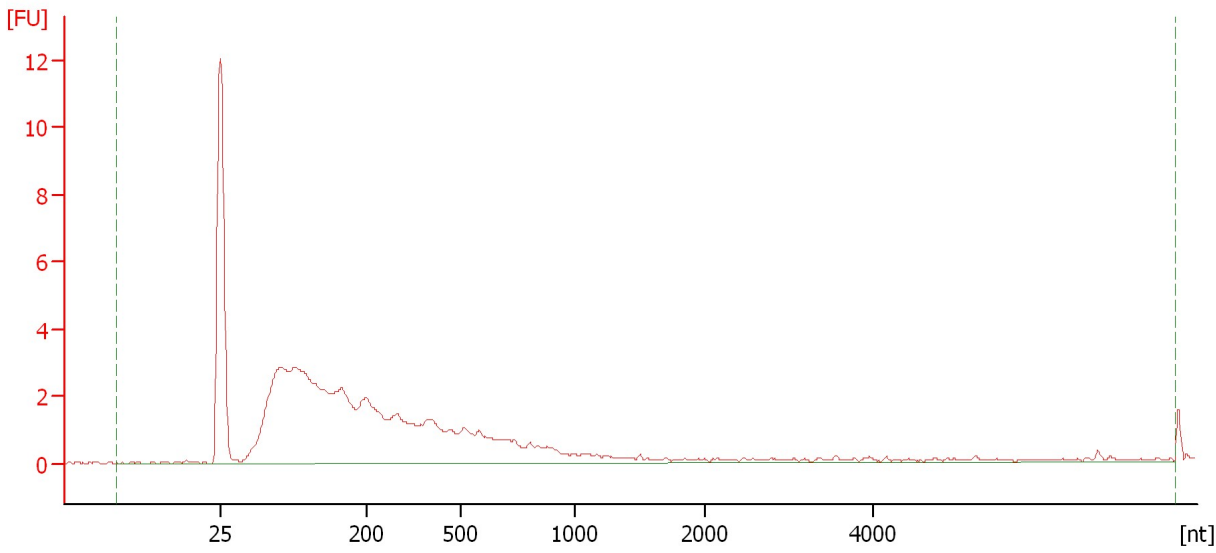
Name	Start Size [nt]	End Size [nt]	Area	% of total Area
18S	1,546	2,055	13.7	18.3

Assay Class: Eukaryote Total RNA Nano  
Data Path: C:\...ents and Settings\Bioanalyzer\2012-03-12\2012-03-12\_002.xad

Created: 3/12/2012 11:43:18 AM  
Modified: 3/12/2012 2:10:25 PM

**Electropherogram Summary Continued ...**

FB 5



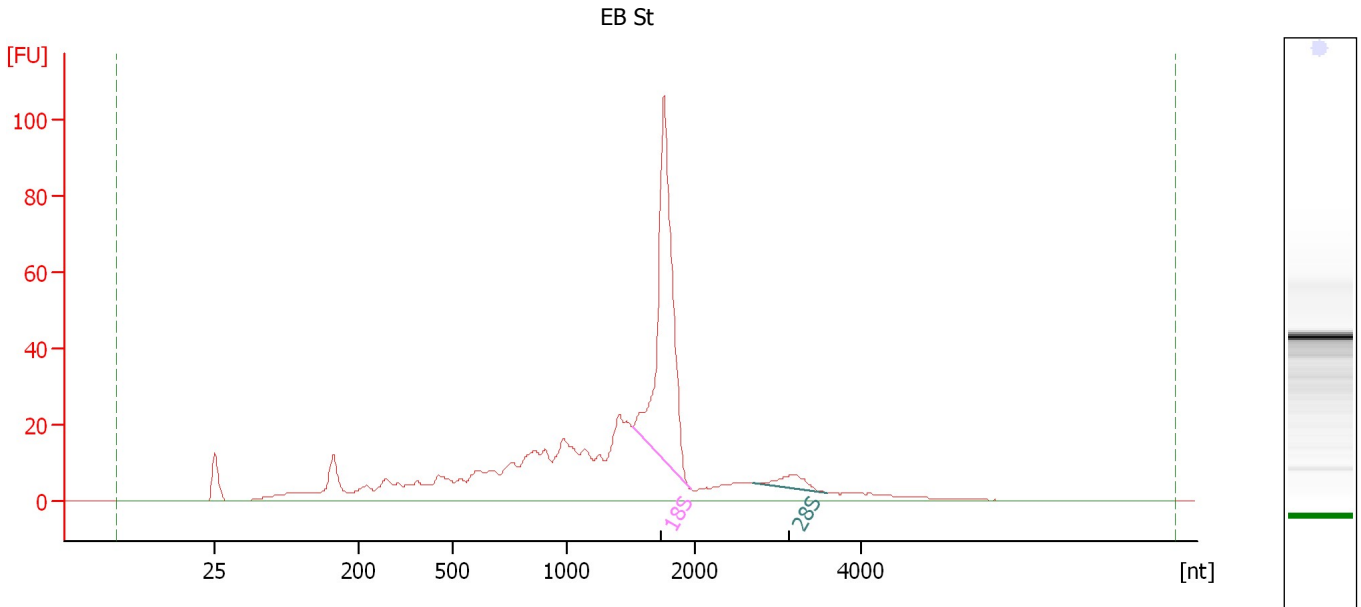
**Overall Results for sample 6 : FB 5**

RNA Area:	69.7	RNA Integrity Number (RIN):	2.1 (B.02.08)
RNA Concentration:	77 ng/μl	Result Flagging Color:	<span style="background-color: #ccccff; border: 1px solid black; display: inline-block; width: 20px; height: 10px;"></span>
rRNA Ratio [28s / 18s]:	0.0	Result Flagging Label:	RIN: 2.10

Assay Class: Eukaryote Total RNA Nano  
 Data Path: C:\...ents and Settings\Bioanalyzer\2012-03-12\2012-03-12\_002.xad

Created: 3/12/2012 11:43:18 AM  
 Modified: 3/12/2012 2:10:25 PM

**Electropherogram Summary Continued ...**



**Overall Results for sample 7 : EB St**

RNA Area:	654.4	RNA Integrity Number (RIN):	6.3 (B.02.08, Anomaly Threshold(s) manually adapted)
RNA Concentration:	724 ng/μl	Result Flagging Color:	<span style="background-color: #ccccff; border: 1px solid black; display: inline-block; width: 20px; height: 10px;"></span>
rRNA Ratio [28s / 18s]:	0.1	Result Flagging Label:	RIN: 6.30

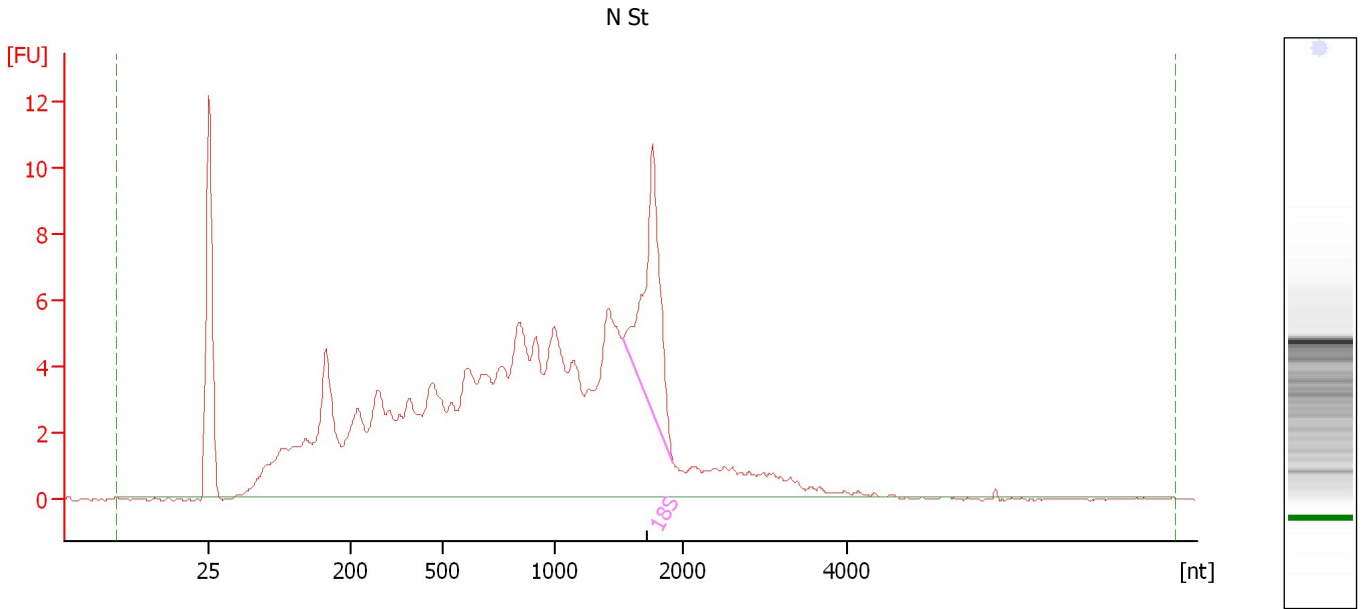
**Fragment table for sample 7 : EB St**

Name	Start Size [nt]	End Size [nt]	Area	% of total Area
18S	1,514	1,972	162.3	24.8
28S	2,715	3,601	10.5	1.6

Assay Class: Eukaryote Total RNA Nano  
Data Path: C:\...ents and Settings\Bioanalyzer\2012-03-12\2012-03-12\_002.xad

Created: 3/12/2012 11:43:18 AM  
Modified: 3/12/2012 2:10:25 PM

**Electropherogram Summary Continued ...**



**Overall Results for sample 8 : N St**

RNA Area: 189.9                      RNA Integrity Number (RIN): 5 (B.02.08)  
RNA Concentration: 210 ng/μl                      Result Flagging Color:   
rRNA Ratio [28s / 18s]: 0.0                      Result Flagging Label: RIN:5

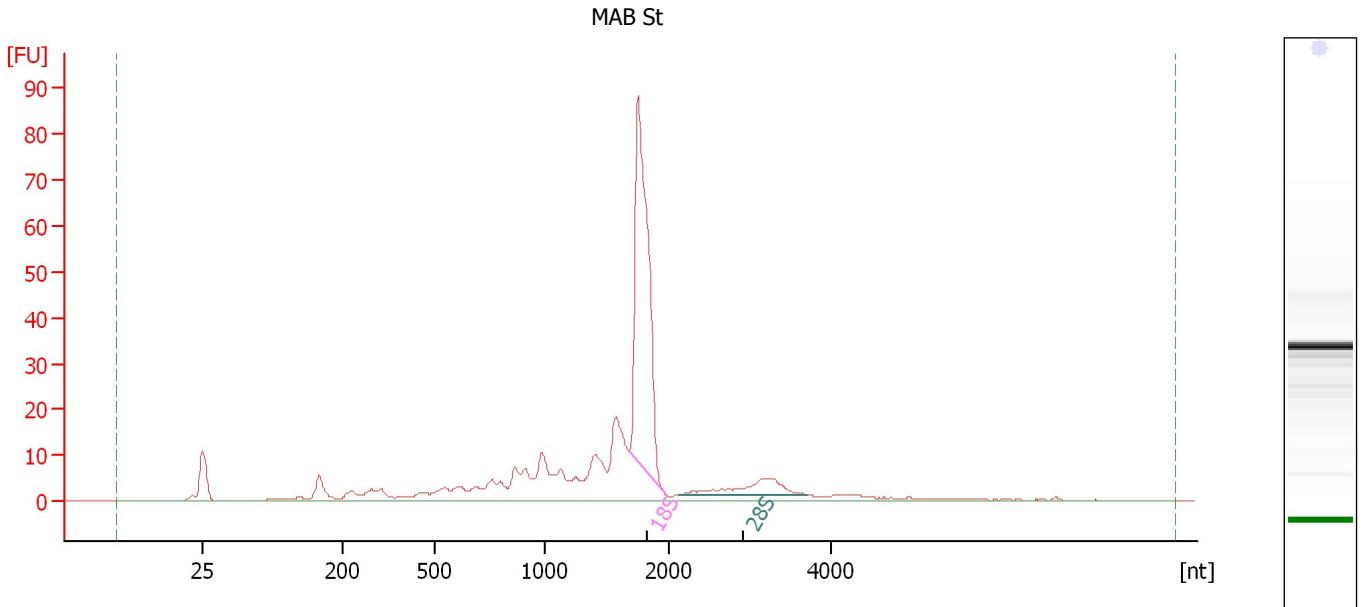
**Fragment table for sample 8 : N St**

Name	Start Size [nt]	End Size [nt]	Area	% of total Area
18S	1,530	1,935	15.1	8.0

Assay Class: Eukaryote Total RNA Nano  
 Data Path: C:\...ents and Settings\Bioanalyzer\2012-03-12\2012-03-12\_002.xad

Created: 3/12/2012 11:43:18 AM  
 Modified: 3/12/2012 2:10:25 PM

**Electropherogram Summary Continued ...**



**Overall Results for sample 9 : MAB St**

RNA Area:	361.3	RNA Integrity Number (RIN):	6.6 (B.02.08, Anomaly Threshold(s) manually adapted)
RNA Concentration:	400 ng/μl	Result Flagging Color:	<span style="background-color: #ccccff; border: 1px solid black; display: inline-block; width: 20px; height: 10px;"></span>
rRNA Ratio [28s / 18s]:	0.1	Result Flagging Label:	RIN: 6.60

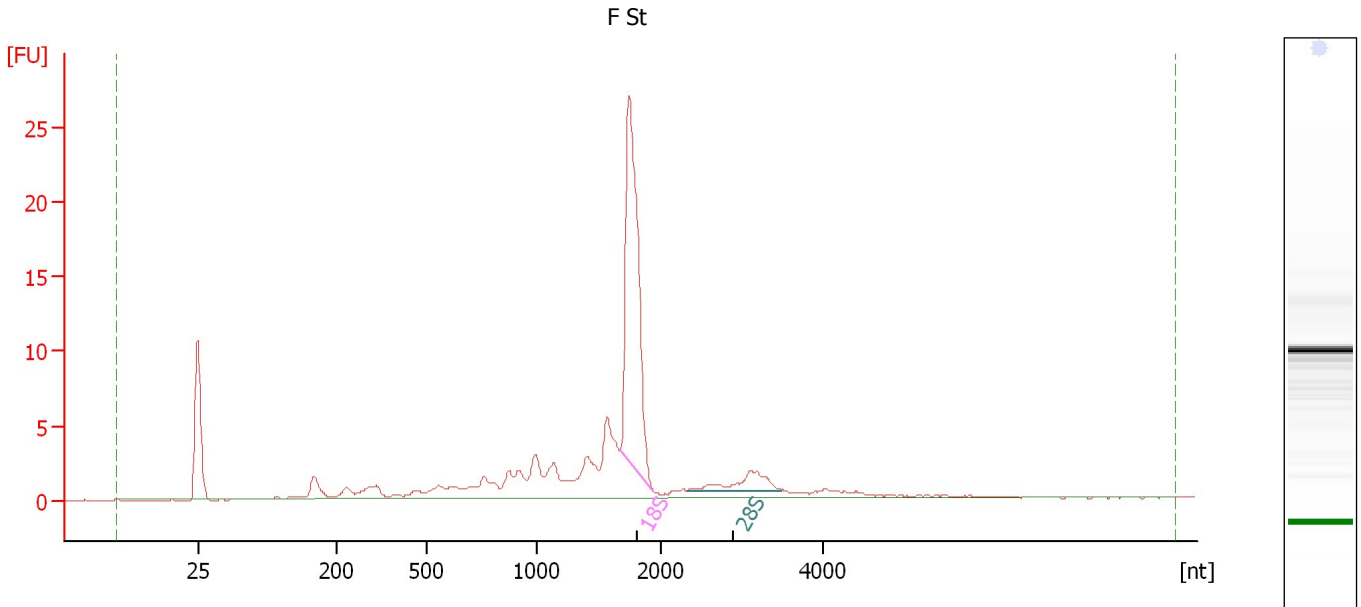
**Fragment table for sample 9 : MAB St**

Name	Start Size [nt]	End Size [nt]	Area	% of total Area
18S	1,674	1,956	128.9	35.7
28S	2,103	3,684	17.7	4.9

Assay Class: Eukaryote Total RNA Nano  
 Data Path: C:\...ents and Settings\Bioanalyzer\2012-03-12\2012-03-12\_002.xad

Created: 3/12/2012 11:43:18 AM  
 Modified: 3/12/2012 2:10:25 PM

**Electropherogram Summary Continued ...**



**Overall Results for sample 10 : F St**

RNA Area:	106.4	RNA Integrity Number (RIN):	6.8 (B.02.08, Anomaly Threshold(s) manually adapted)
RNA Concentration:	118 ng/μl	Result Flagging Color:	<span style="background-color: #ccccff; border: 1px solid black; display: inline-block; width: 20px; height: 10px;"></span>
rRNA Ratio [28s / 18s]:	0.1	Result Flagging Label:	RIN: 6.80

**Fragment table for sample 10 : F St**

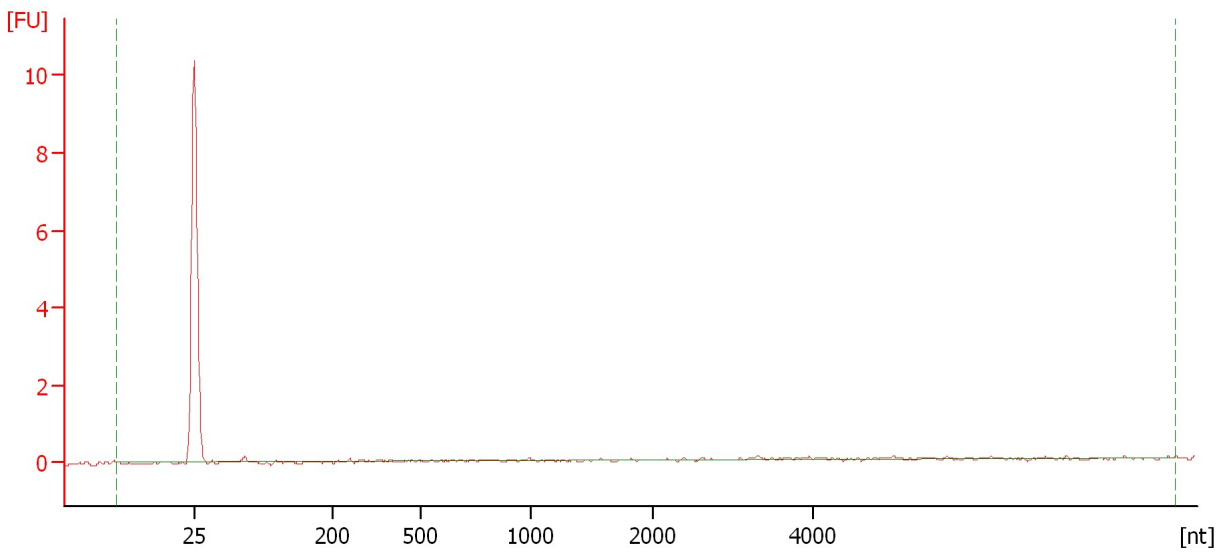
Name	Start Size [nt]	End Size [nt]	Area	% of total Area
18S	1,669	1,936	37.3	35.1
28S	2,326	3,495	4.2	3.9

Assay Class: Eukaryote Total RNA Nano  
Data Path: C:\...ents and Settings\Bioanalyzer\2012-03-12\2012-03-12\_002.xad

Created: 3/12/2012 11:43:18 AM  
Modified: 3/12/2012 2:10:25 PM

**Electropherogram Summary Continued ...**

Sample 11



**Overall Results for sample 11 : Sample 11**

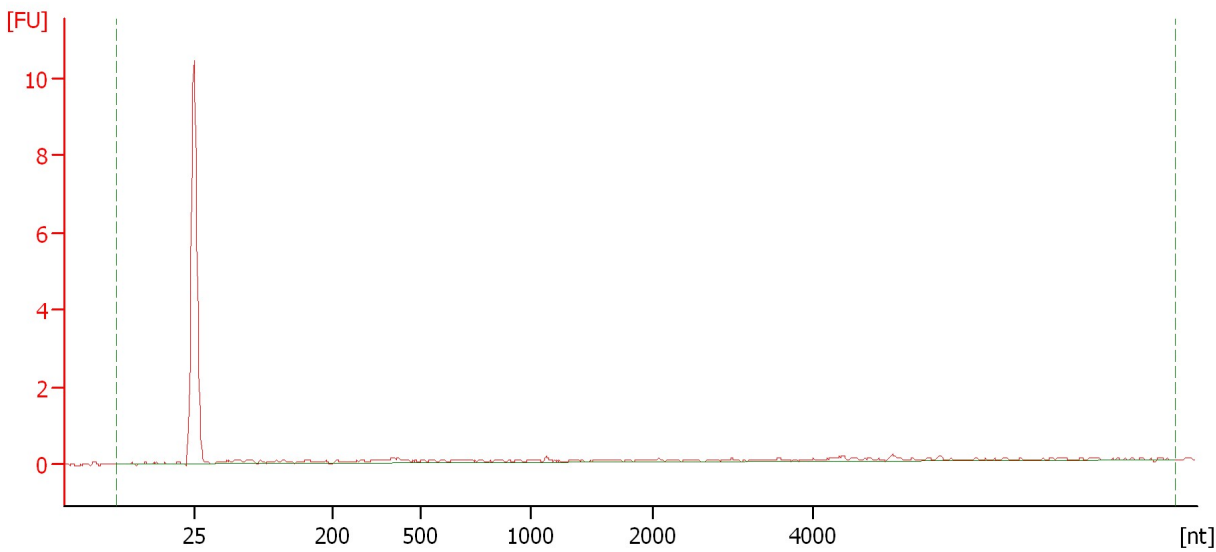
RNA Area:	0.4	RNA Integrity Number (RIN):	N/A (B.02.08)
RNA Concentration:	0 ng/μl	Result Flagging Color:	<span style="background-color: #cccccc; border: 1px solid black; display: inline-block; width: 20px; height: 10px;"></span>
rRNA Ratio [28s / 18s]:	0.0	Result Flagging Label:	RIN N/A

Assay Class: Eukaryote Total RNA Nano  
Data Path: C:\...ents and Settings\Bioanalyzer\2012-03-12\2012-03-12\_002.xad

Created: 3/12/2012 11:43:18 AM  
Modified: 3/12/2012 2:10:25 PM

**Electropherogram Summary Continued ...**

Sample 12



**Overall Results for sample 12 : Sample 12**

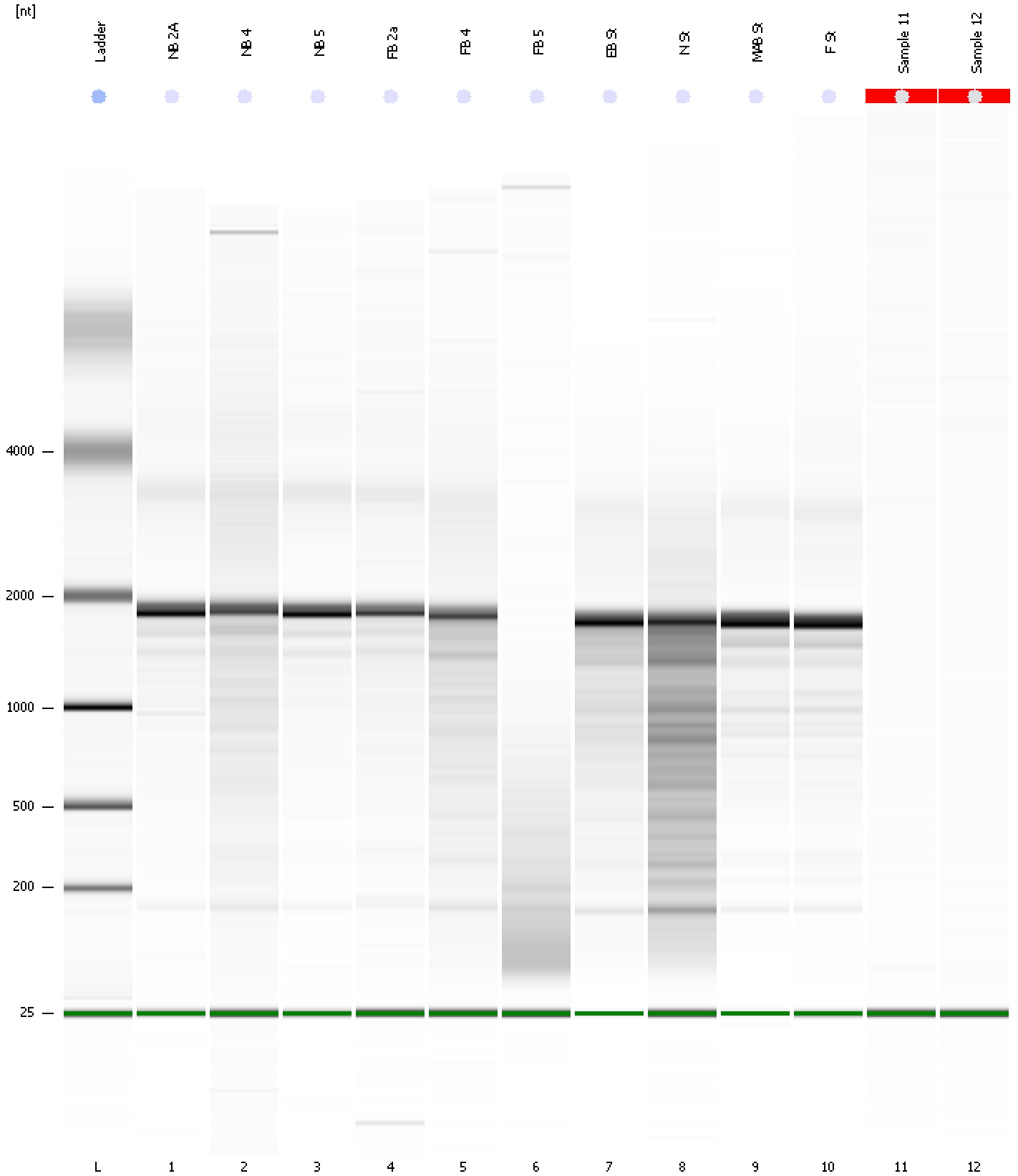
RNA Area:	3.5	RNA Integrity Number (RIN):	N/A (B.02.08)
RNA Concentration:	4 ng/μl	Result Flagging Color:	<span style="background-color: #cccccc; border: 1px solid black; display: inline-block; width: 20px; height: 10px;"></span>
rRNA Ratio [28s / 18s]:	0.0	Result Flagging Label:	RIN N/A



Assay Class: Eukaryote Total RNA Nano  
Data Path: C:\...ents and Settings\Bioanalyzer\2012-03-12\2012-03-12\_002.xad

Created: 3/12/2012 11:43:18 AM  
Modified: 3/12/2012 2:10:25 PM

**Gel Image**



Assay Class: Eukaryote Total RNA Nano  
 Data Path: C:\...ents and Settings\Bioanalyzer\2012-03-12\2012-03-12\_002.xad

Created: 3/12/2012 11:43:18 AM  
 Modified: 3/12/2012 2:10:25 PM

**Run Logbook**

Description	Number	Source	Category	Sub Category	Time	Time Zone	User	Host
Run ended on port 1 (Number of wells acquired: 13)		Instrument	Run		3/12/2012 12:07:07 PM	(GMT --07:00) Pacific Standard Time	UC Davis	D8XSMGH1
Run started on port 1 (File: C:\Documents and Settings\Bioanalyzer\2012-03-12\2012-03-12_002.xad)		Instrument	Run		3/12/2012 11:43:24 AM	(GMT --07:00) Pacific Standard Time	UC Davis	D8XSMGH1
Product Number : G2938B		Instrument	Run		3/12/2012 11:43:24 AM	(GMT --07:00) Pacific Standard Time	UC Davis	D8XSMGH1
Name :		Instrument	Run		3/12/2012 11:43:24 AM	(GMT --07:00) Pacific Standard Time	UC Davis	D8XSMGH1
Vendor : Agilent Technologies		Instrument	Run		3/12/2012 11:43:24 AM	(GMT --07:00) Pacific Standard Time	UC Davis	D8XSMGH1
Serial# : DE13701086		Instrument	Run		3/12/2012 11:43:24 AM	(GMT --07:00) Pacific Standard Time	UC Davis	D8XSMGH1
Firmware : C.01.069		Instrument	Run		3/12/2012 11:43:24 AM	(GMT --07:00) Pacific Standard Time	UC Davis	D8XSMGH1
Cartridge : Electrode		Instrument	Run		3/12/2012 11:43:24 AM	(GMT --07:00) Pacific Standard Time	UC Davis	D8XSMGH1