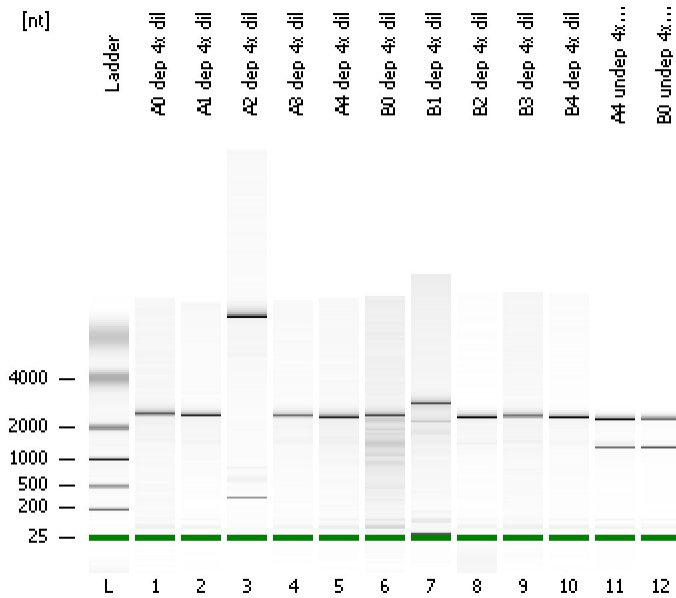


Assay Class: mRNA Nano
Data Path: C:\...ings\Bioanalyzer\2012-03-12\2012-03-12_003_ErinLynch_HS.xad

Created: 3/12/2012 1:19:02 PM
Modified: 3/15/2012 1:05:21 PM

Electrophoresis File Run Summary



Instrument Information:

Instrument Name: DE13701086 Firmware: C.01.069
Serial#: DE13701086 Type: G2938B

Assay Information:

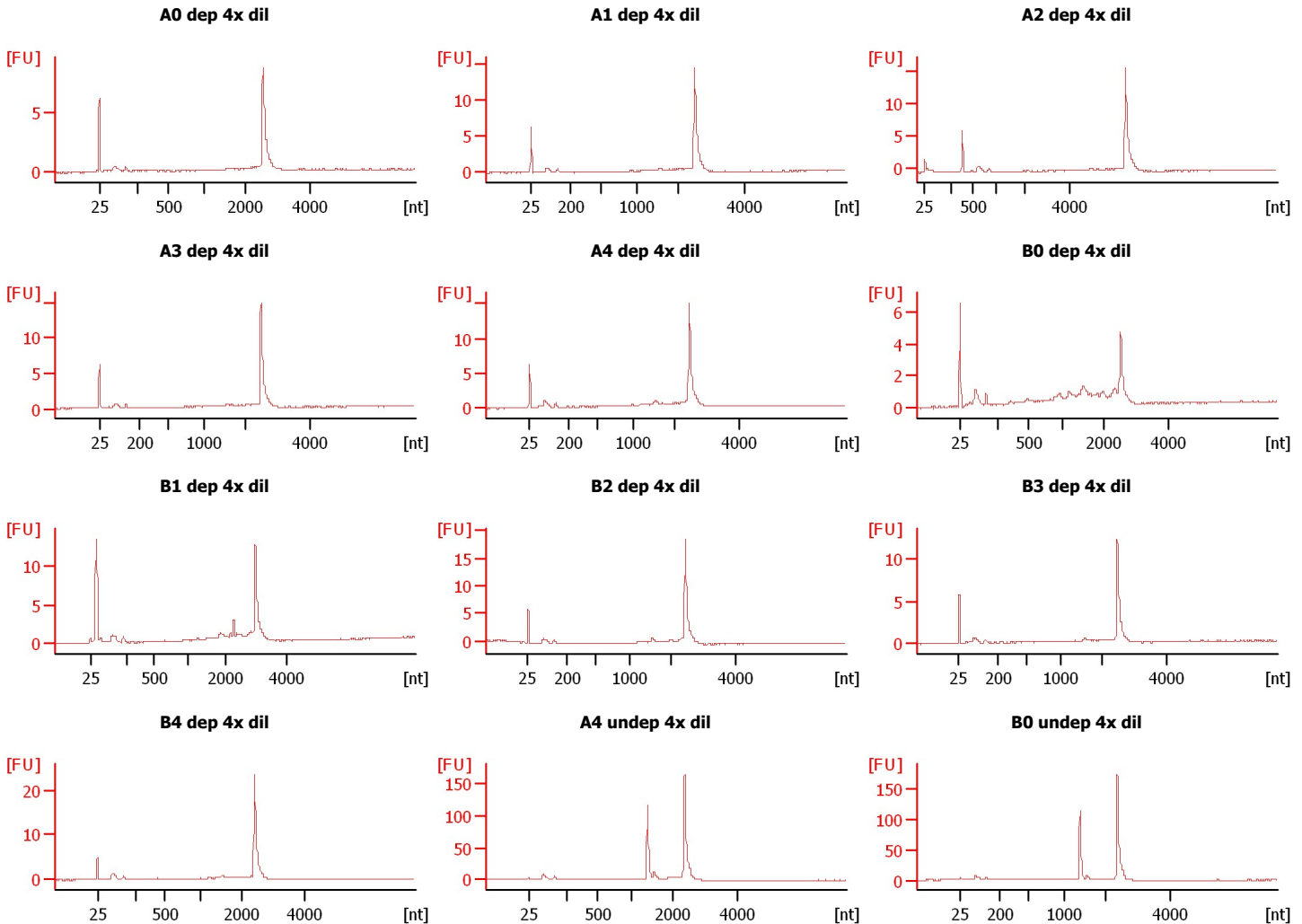
Assay Origin Path: C:\Program Files\Agilent\2100 bioanalyzer\2100 expert\assays\RNA\mRNA Nano Series II.xsy

Assay Class: mRNA Nano
Version: 2.5
Assay Comments: mRNA Analysis ng sensitivity

© Copyright 2003 - 2009 Agilent Technologies, Inc.

Chip Information:

Chip Lot #:
Reagent Kit Lot #:
Chip Comments:



Assay Class: mRNA Nano
Data Path: C:\...ings\Bioanalyzer\2012-03-12\2012-03-12_003_ErinLynch_HS.xad

Created: 3/12/2012 1:19:02 PM
Modified: 3/15/2012 1:05:21 PM

Electrophoresis File Run Summary (Chip Summary)

Sample Name	Sample Comment	Status	Result Label	Result Color
A0 dep 4x dil		✓		
A1 dep 4x dil		✓		
A2 dep 4x dil		✓		
A3 dep 4x dil		✓		
A4 dep 4x dil		✓		
B0 dep 4x dil		✓		
B1 dep 4x dil		✓		
B2 dep 4x dil		✓		
B3 dep 4x dil		✓		
B4 dep 4x dil		✓		
A4 undep 4x dil		✓		
B0 undep 4x dil		✓		
Ladder		✓		

Chip Lot #**Reagent Kit Lot #****Chip Comments :**

Assay Class: mRNA Nano
Data Path: C:\...ings\Bioanalyzer\2012-03-12\2012-03-12_003_ErinLynch_HS.xad

Created: 3/12/2012 1:19:02 PM
Modified: 3/15/2012 1:05:21 PM

Electrophoresis Assay Details

General Analysis Settings

Number of Available Sample and Ladder Wells (Max.) : 13

Minimum Visible Range [s] : 14

Maximum Visible Range [s] : 85

Start Analysis Time Range [s] : 15

End Analysis Time Range [s] : 84

Ladder Concentration [ng/ μ l] : 150

Lower Marker Concentration [ng/ μ l] : 0

Upper Marker Concentration [ng/ μ l] : 0

Used Lower Marker for Quantitation

Standard Curve Fit is Logarithmic

Show Data Aligned to Lower Marker

Integrator Settings

Integration Start Time [s] : 15

Integration End Time [s] : 84

Slope Threshold : 0.2

Height Threshold [FU] : 0.5

Area Threshold : 0.1

Width Threshold [s] : 0.2

Baseline Plateau [s] : 0.5

Filter Settings

Filter Width [s] : 0.5

Polynomial Order : 4

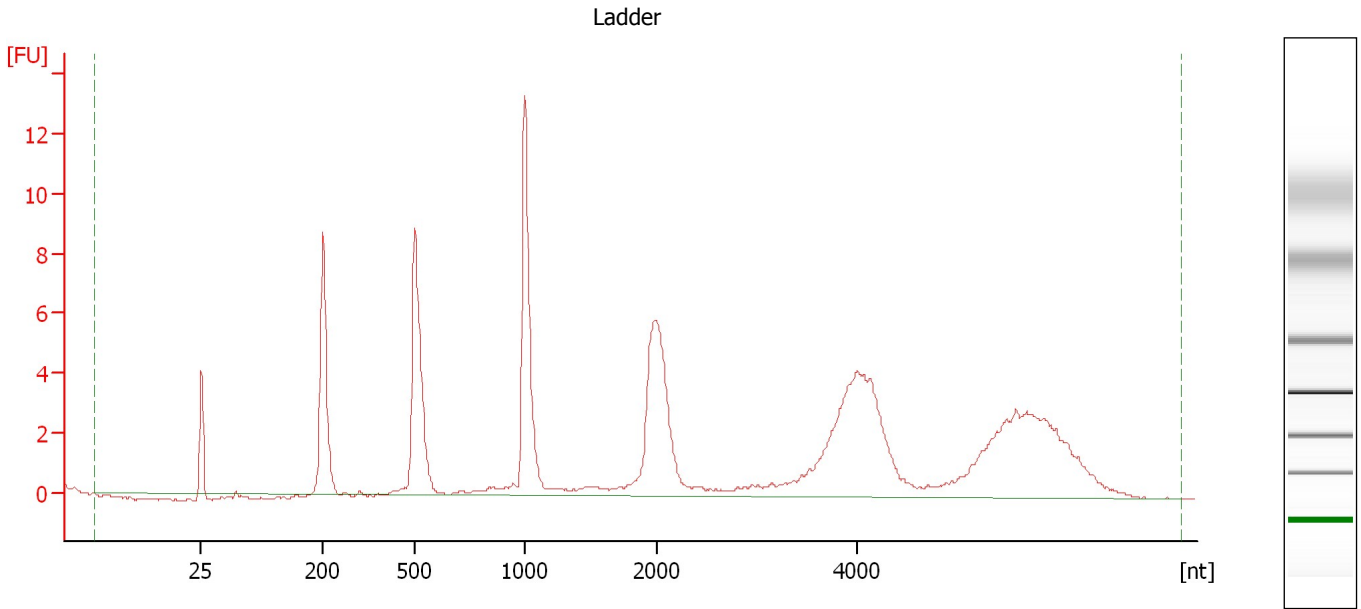
Ladder

Ladder Peak	Size
1	25
2	200
3	500
4	1000
5	2000
6	4000

Assay Class: mRNA Nano
Data Path: C:\...ings\Bioanalyzer\2012-03-12\2012-03-12_003_ErinLynch_HS.xad

Created: 3/12/2012 1:19:02 PM
Modified: 3/15/2012 1:05:21 PM

Electropherogram Summary



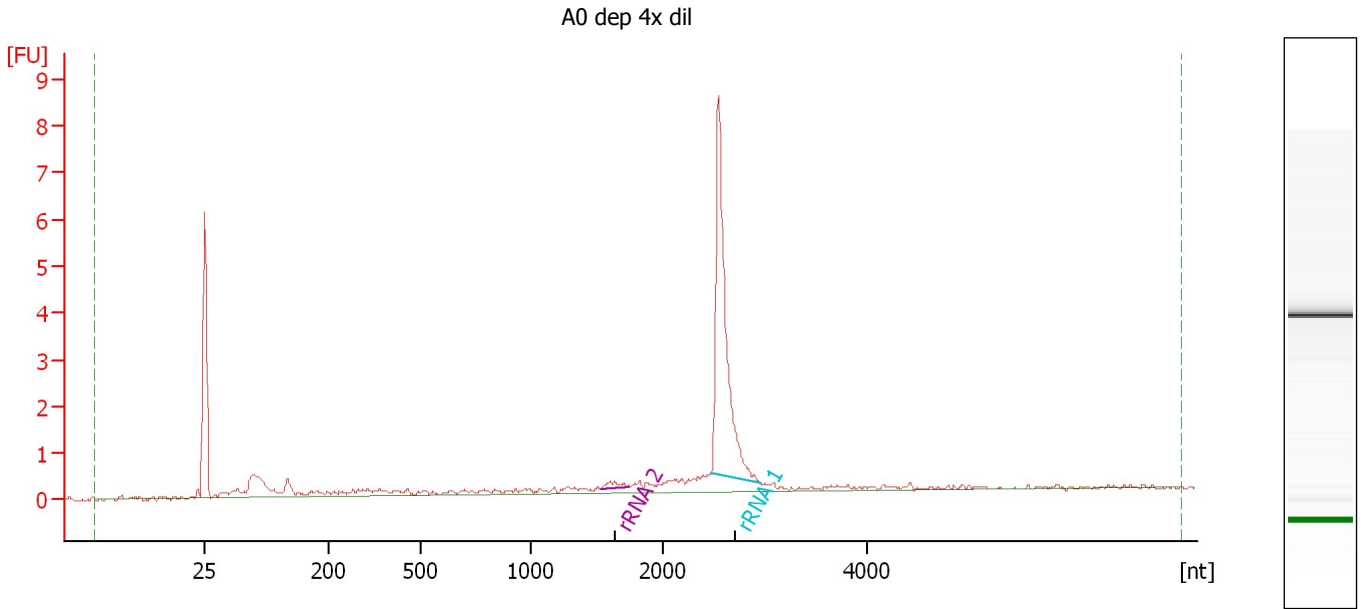
Overall Results for Ladder

RNA Area: 119.9 RNA Concentration: 150 ng/μl

Assay Class: mRNA Nano
 Data Path: C:\...ings\Bioanalyzer\2012-03-12\2012-03-12_003_ErinLynch_HS.xad

Created: 3/12/2012 1:19:02 PM
 Modified: 3/15/2012 1:05:21 PM

Electropherogram Summary Continued ...



Overall Results for sample 1 : A0 dep 4x dil

RNA Area: 24.1 rRNA Contamination: 0.0 %
 RNA Concentration: 30 ng/μl

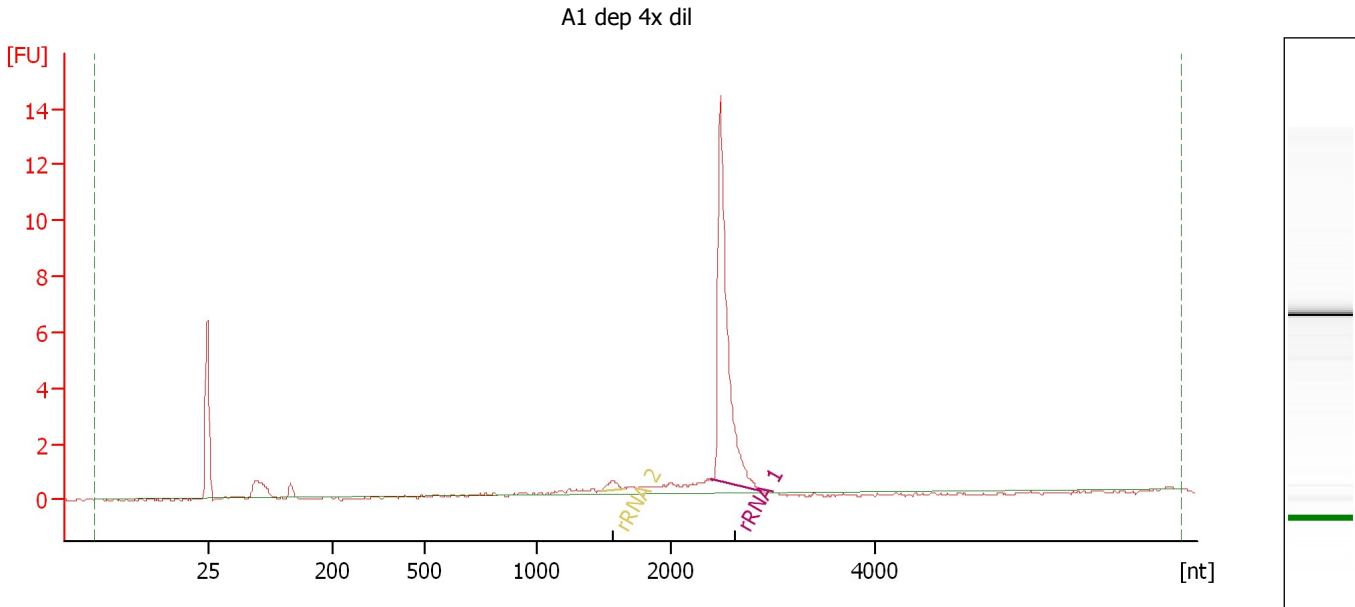
Fragment table for sample 1 : A0 dep 4x dil

Name	Start Size [nt]	End Size [nt]	Area	% of total Area
rRNA 2	1,530	1,743	0.2	0.9
rRNA 1	2,474	2,957	10.3	42.6

Assay Class: mRNA Nano
Data Path: C:\...ings\Bioanalyzer\2012-03-12\2012-03-12_003_ErinLynch_HS.xad

Created: 3/12/2012 1:19:02 PM
Modified: 3/15/2012 1:05:21 PM

Electropherogram Summary Continued ...



Overall Results for sample 2 : A1 dep 4x dil

RNA Area: 27.5 rRNA Contamination: 0.0 %
RNA Concentration: 34 ng/μl

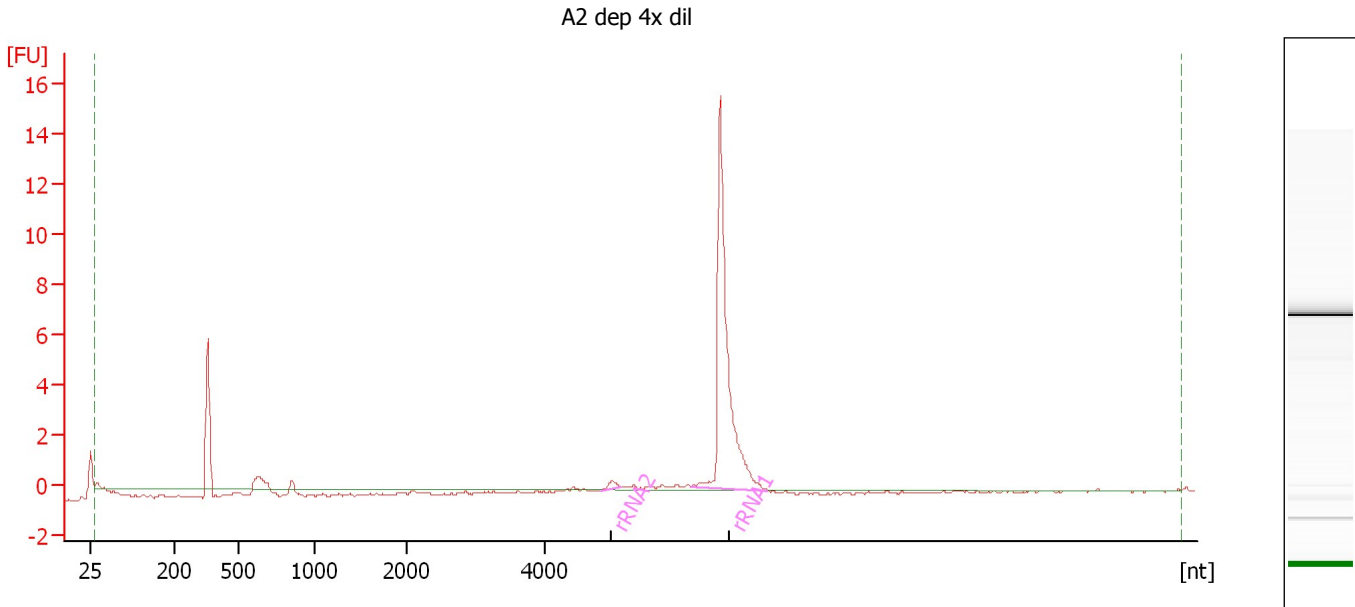
Fragment table for sample 2 : A1 dep 4x dil

Name	Start Size [nt]	End Size [nt]	Area	% of total Area
rRNA 2	1,491	1,656	0.4	1.6
rRNA 1	2,384	2,883	16.4	59.4

Assay Class: mRNA Nano
 Data Path: C:\...ings\Bioanalyzer\2012-03-12\2012-03-12_003_ErinLynch_HS.xad

Created: 3/12/2012 1:19:02 PM
 Modified: 3/15/2012 1:05:21 PM

Electropherogram Summary Continued ...



Overall Results for sample 3 : A2 dep 4x dil

RNA Area: 28.0 rRNA Contamination: 0.0 %
 RNA Concentration: 35 ng/μl

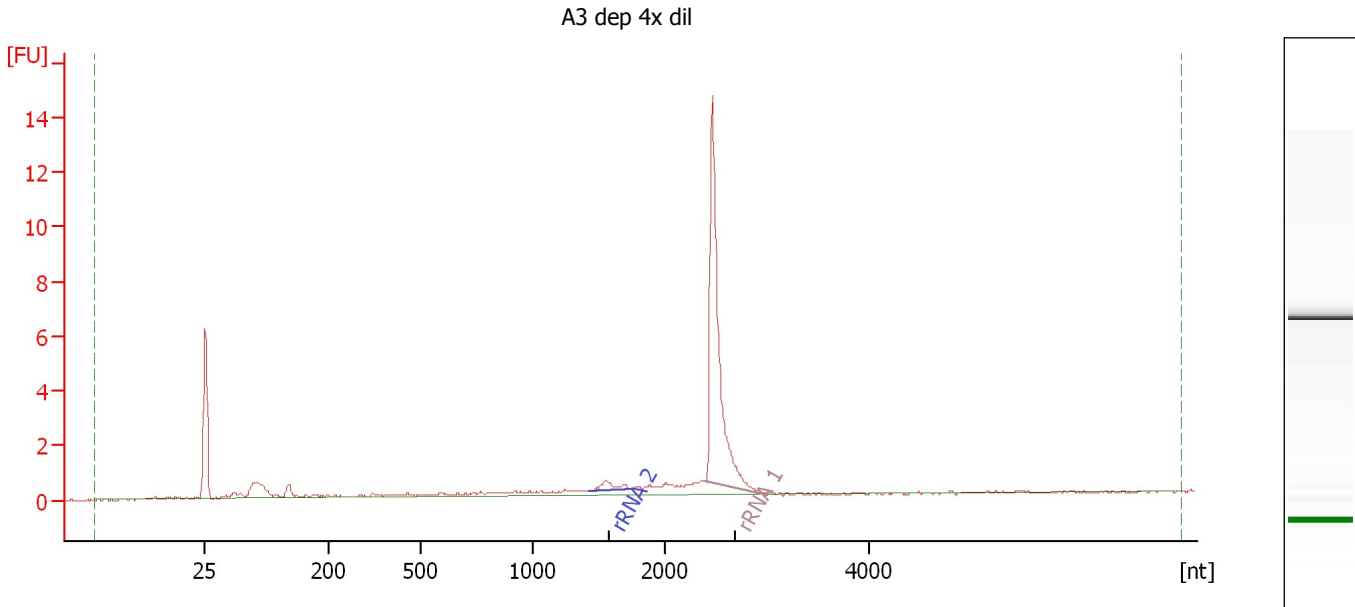
Fragment table for sample 3 : A2 dep 4x dil

Name	Start Size [nt]	End Size [nt]	Area	% of total Area
rRNA2	4,796	5,091	0.4	1.4
rRNA1	6,087	7,191	18.9	67.7

Assay Class: mRNA Nano
Data Path: C:\...ings\Bioanalyzer\2012-03-12\2012-03-12_003_ErinLynch_HS.xad

Created: 3/12/2012 1:19:02 PM
Modified: 3/15/2012 1:05:21 PM

Electropherogram Summary Continued ...



Overall Results for sample 4 : A3 dep 4x dil

RNA Area: 31.6 rRNA Contamination: 0.0 %
RNA Concentration: 39 ng/μl

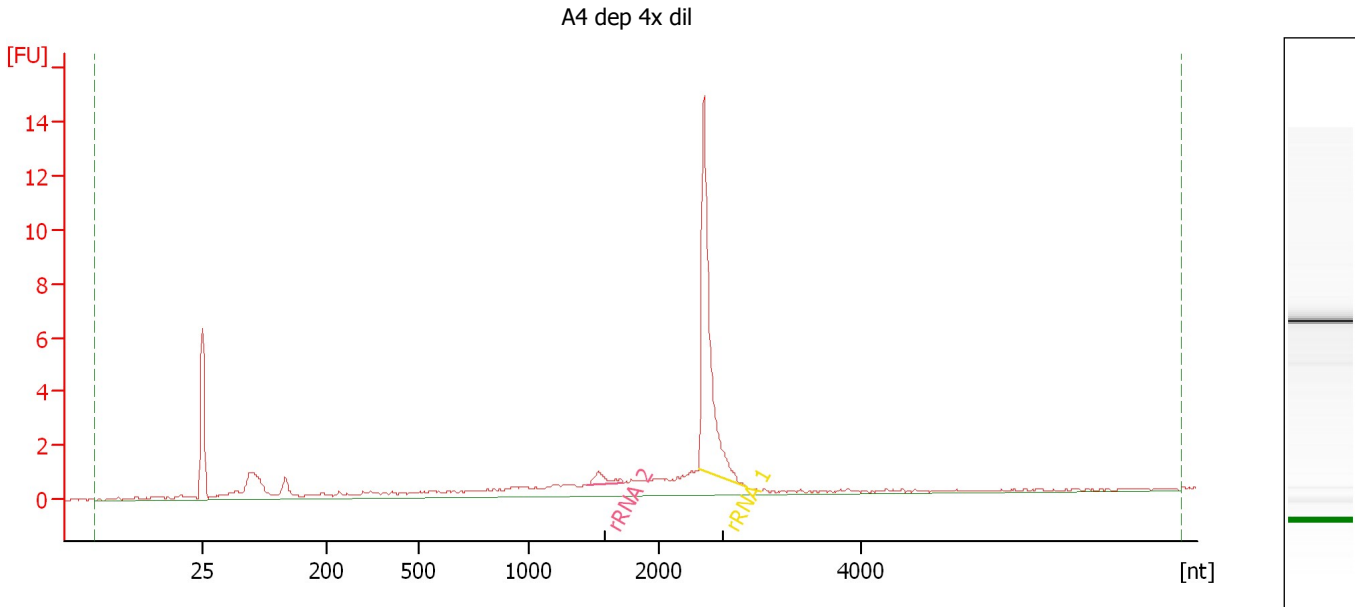
Fragment table for sample 4 : A3 dep 4x dil

Name	Start Size [nt]	End Size [nt]	Area	% of total Area
rRNA 2	1,419	1,737	0.7	2.3
rRNA 1	2,384	3,006	15.8	50.0

Assay Class: mRNA Nano
Data Path: C:\...ings\Bioanalyzer\2012-03-12\2012-03-12_003_ErinLynch_HS.xad

Created: 3/12/2012 1:19:02 PM
Modified: 3/15/2012 1:05:21 PM

Electropherogram Summary Continued ...



Overall Results for sample 5 : A4 dep 4x dil

RNA Area: 48.3 rRNA Contamination: 0.0 %
RNA Concentration: 60 ng/μl

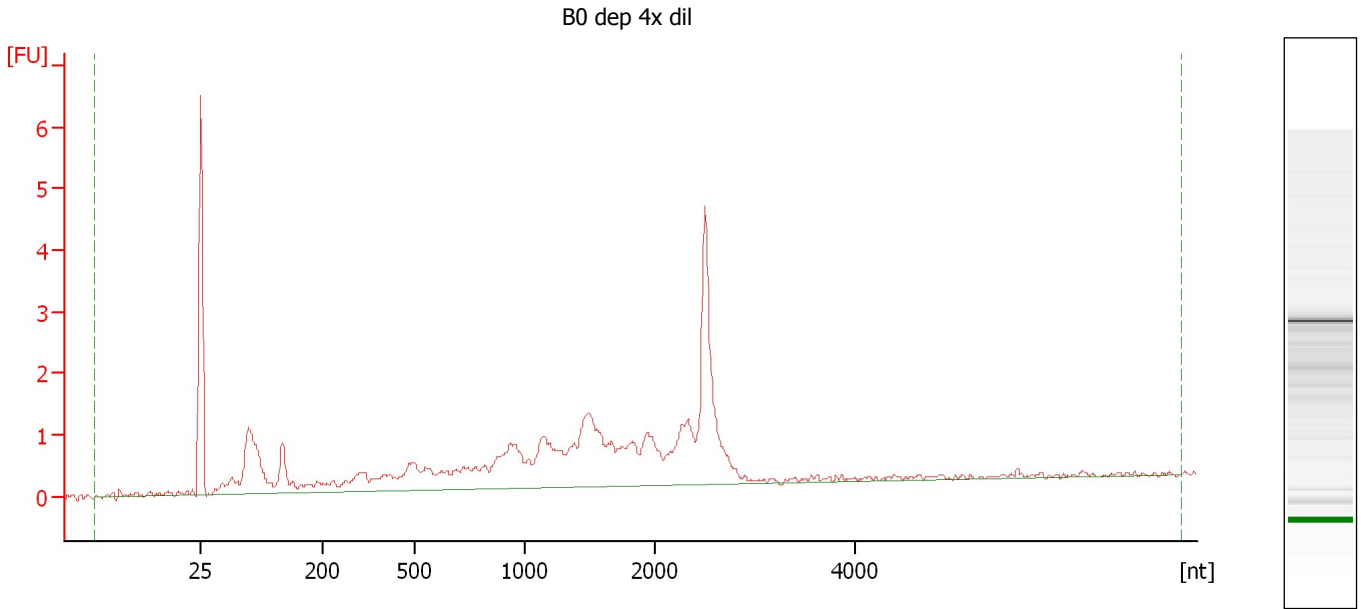
Fragment table for sample 5 : A4 dep 4x dil

Name	Start Size [nt]	End Size [nt]	Area	% of total Area
rRNA 2	1,450	1,719	0.9	1.8
rRNA 1	2,383	2,862	15.1	31.3

Assay Class: mRNA Nano
Data Path: C:\...ings\Bioanalyzer\2012-03-12\2012-03-12_003_ErinLynch_HS.xad

Created: 3/12/2012 1:19:02 PM
Modified: 3/15/2012 1:05:21 PM

Electropherogram Summary Continued ...



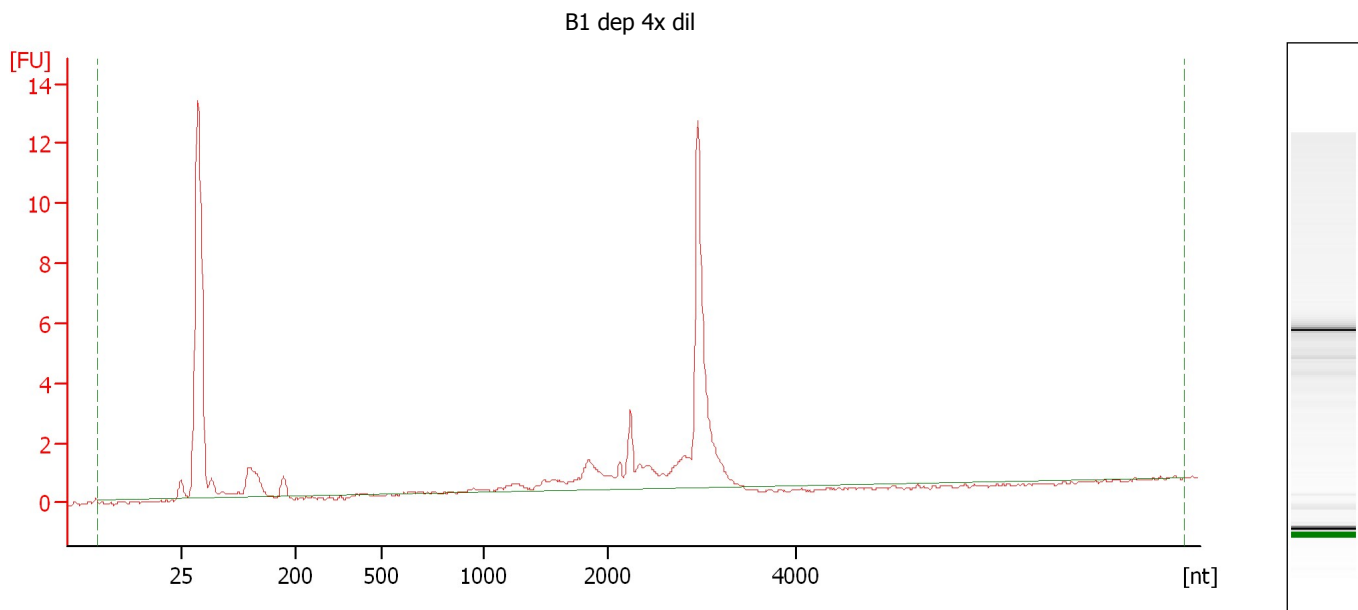
Overall Results for sample 6 : B0 dep 4x dil

RNA Area:	44.1	rRNA Contamination:	0.0 %
RNA Concentration:	55 ng/μl		

Assay Class: mRNA Nano
Data Path: C:\...ings\Bioanalyzer\2012-03-12\2012-03-12_003_ErinLynch_HS.xad

Created: 3/12/2012 1:19:02 PM
Modified: 3/15/2012 1:05:21 PM

Electropherogram Summary Continued ...



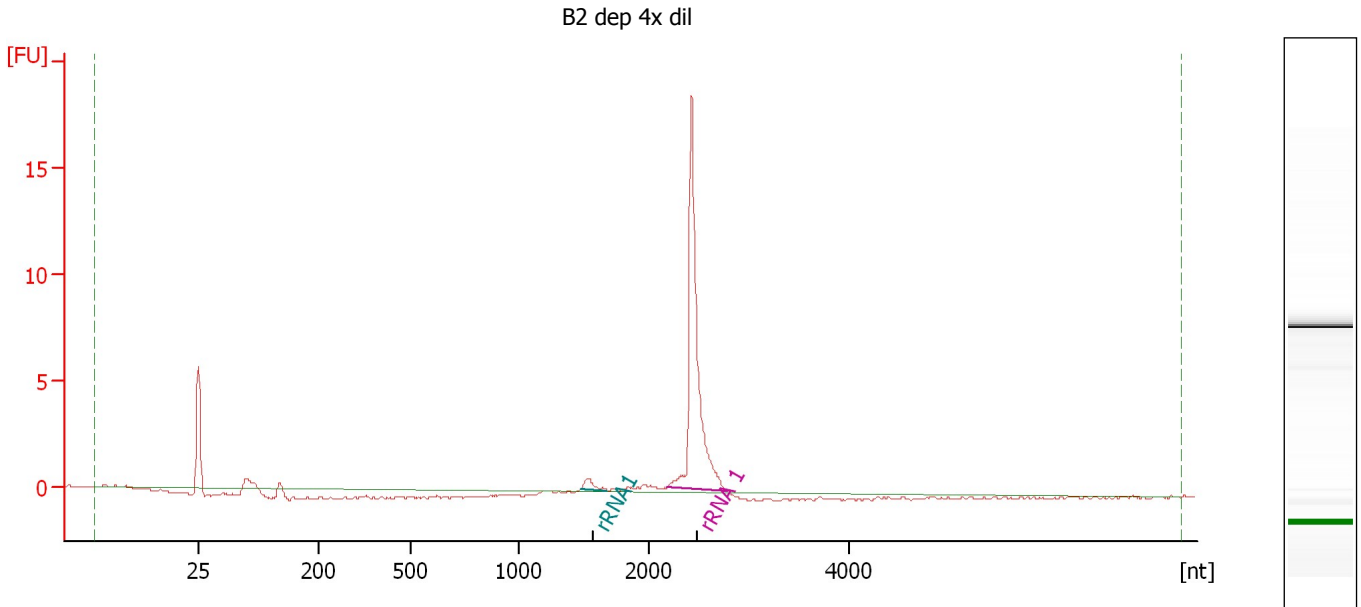
Overall Results for sample 7 : B1 dep 4x dil

RNA Area: 65.9 rRNA Contamination: 0.0 %
RNA Concentration: 83 ng/ μ l

Assay Class: mRNA Nano
 Data Path: C:\...ings\Bioanalyzer\2012-03-12\2012-03-12_003_ErinLynch_HS.xad

Created: 3/12/2012 1:19:02 PM
 Modified: 3/15/2012 1:05:21 PM

Electropherogram Summary Continued ...



Overall Results for sample 8 : B2 dep 4x dil

RNA Area: 25.3 rRNA Contamination: 0.0 %
 RNA Concentration: 32 ng/μl

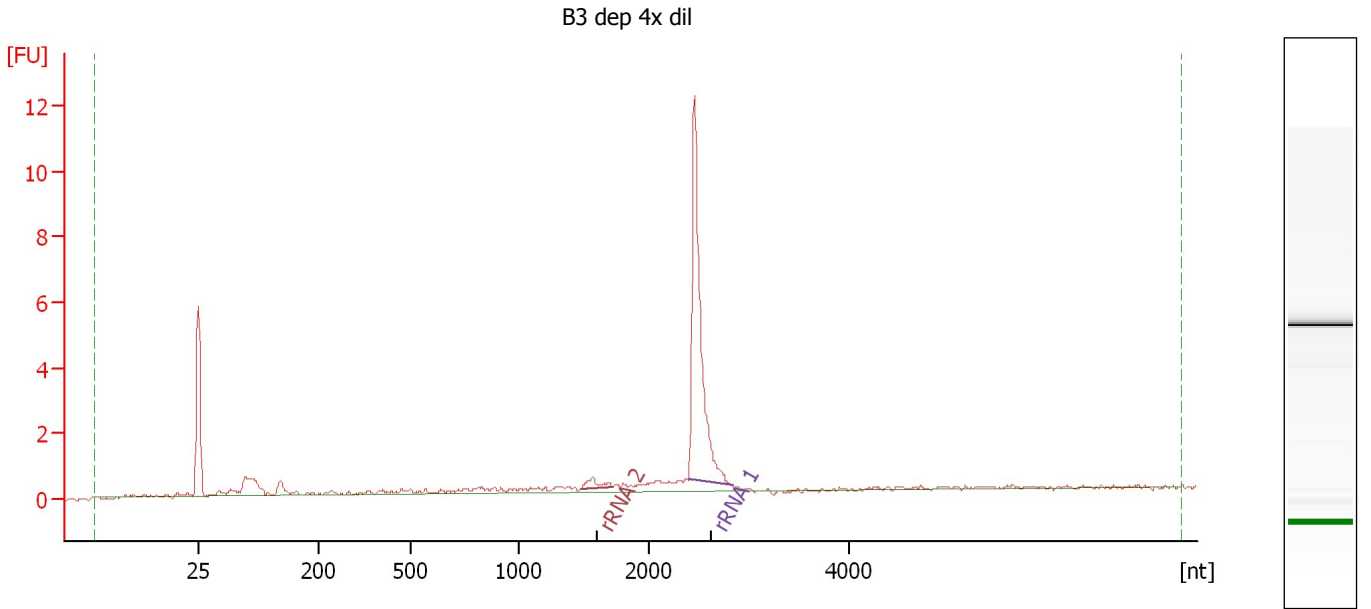
Fragment table for sample 8 : B2 dep 4x dil

Name	Start Size [nt]	End Size [nt]	Area	% of total Area
rRNA1	1,477	1,681	0.7	2.9
rRNA 1	2,186	2,783	20.3	80.1

Assay Class: mRNA Nano
 Data Path: C:\...ings\Bioanalyzer\2012-03-12\2012-03-12_003_ErinLynch_HS.xad

Created: 3/12/2012 1:19:02 PM
 Modified: 3/15/2012 1:05:21 PM

Electropherogram Summary Continued ...



Overall Results for sample 9 : B3 dep 4x dil

RNA Area: 26.4 rRNA Contamination: 0.0 %
 RNA Concentration: 33 ng/μl

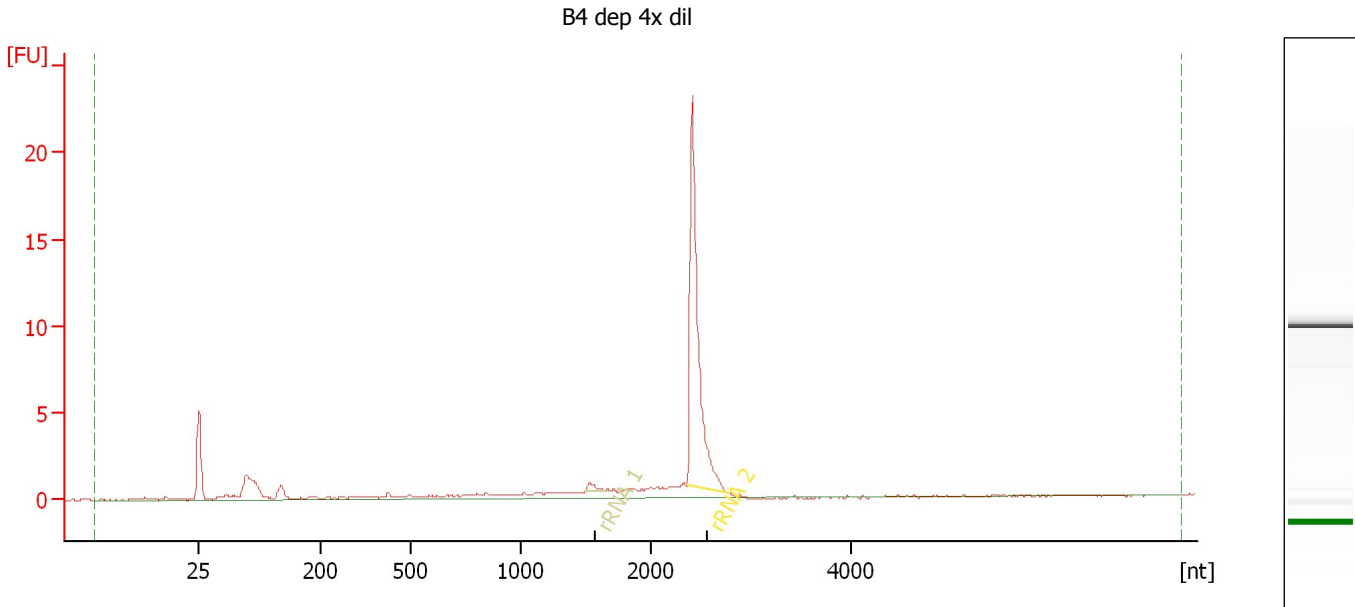
Fragment table for sample 9 : B3 dep 4x dil

Name	Start Size [nt]	End Size [nt]	Area	% of total Area
rRNA 2	1,477	1,726	0.5	1.9
rRNA 1	2,396	2,834	13.1	49.5

Assay Class: mRNA Nano
 Data Path: C:\...ings\Bioanalyzer\2012-03-12\2012-03-12_003_ErinLynch_HS.xad

Created: 3/12/2012 1:19:02 PM
 Modified: 3/15/2012 1:05:21 PM

Electropherogram Summary Continued ...



Overall Results for sample 10 : B4 dep 4x dil

RNA Area: 48.8 rRNA Contamination: 0.0 %
 RNA Concentration: 61 ng/μl

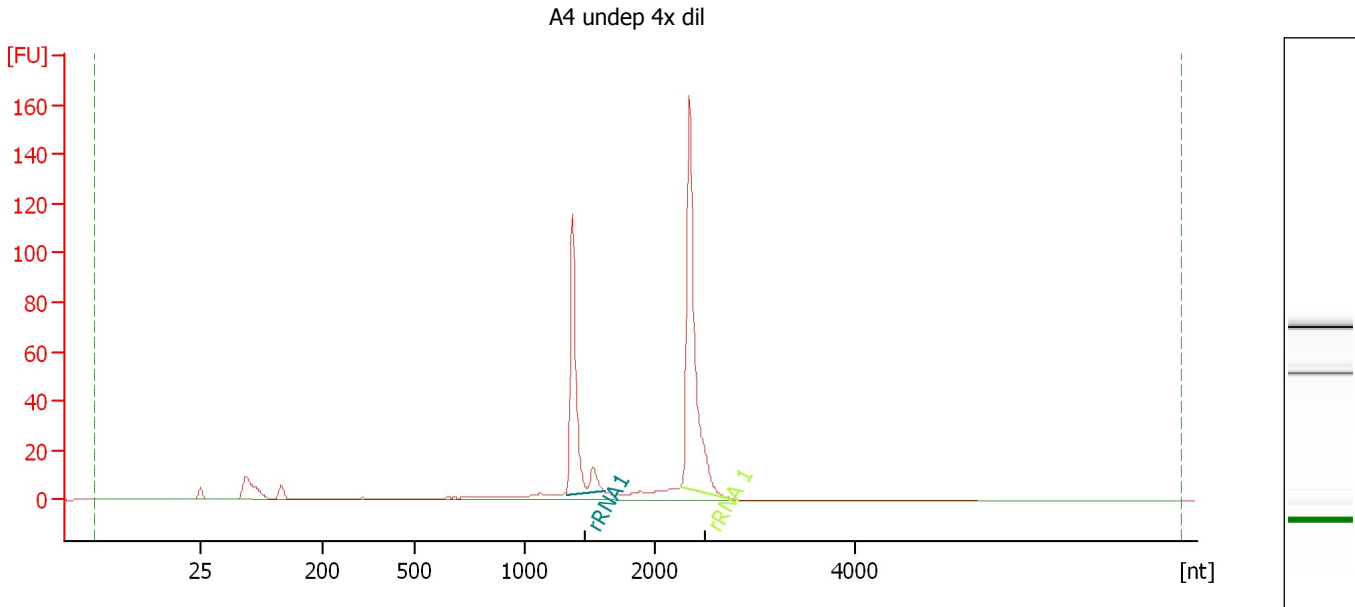
Fragment table for sample 10 : B4 dep 4x dil

Name	Start Size [nt]	End Size [nt]	Area	% of total Area
rRNA 1	1,495	1,642	0.5	1.1
rRNA 2	2,363	2,785	23.7	48.5

Assay Class: mRNA Nano
Data Path: C:\...ings\Bioanalyzer\2012-03-12\2012-03-12_003_ErinLynch_HS.xad

Created: 3/12/2012 1:19:02 PM
Modified: 3/15/2012 1:05:21 PM

Electropherogram Summary Continued ...



Overall Results for sample 11 : A4 undep 4x dil

RNA Area: 431.4 rRNA Contamination: 0.0 %
RNA Concentration: 540 ng/μl

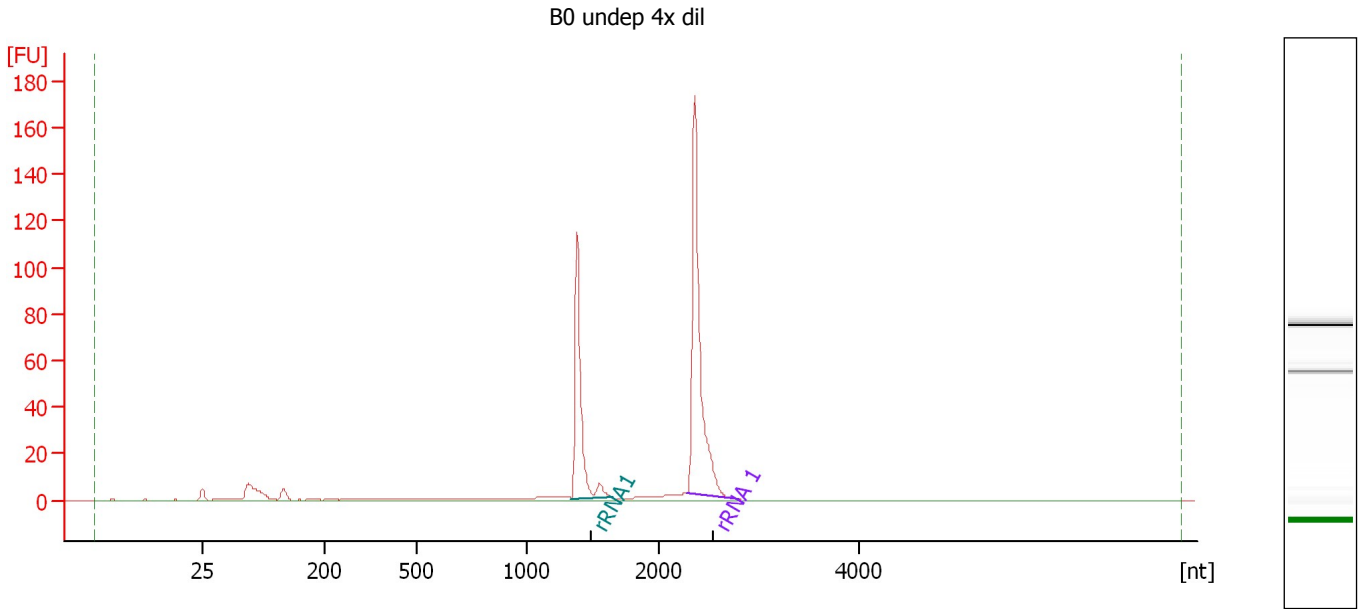
Fragment table for sample 11 : A4 undep 4x dil

Name	Start Size [nt]	End Size [nt]	Area	% of total Area
rRNA1	1,329	1,617	109.9	25.5
rRNA 1	2,266	2,765	170.1	39.4

Assay Class: mRNA Nano
Data Path: C:\...ings\Bioanalyzer\2012-03-12\2012-03-12_003_ErinLynch_HS.xad

Created: 3/12/2012 1:19:02 PM
Modified: 3/15/2012 1:05:21 PM

Electropherogram Summary Continued ...



Overall Results for sample 12 : B0 undep 4x dil

RNA Area: 366.8 rRNA Contamination: 0.0 %
RNA Concentration: 459 ng/μl

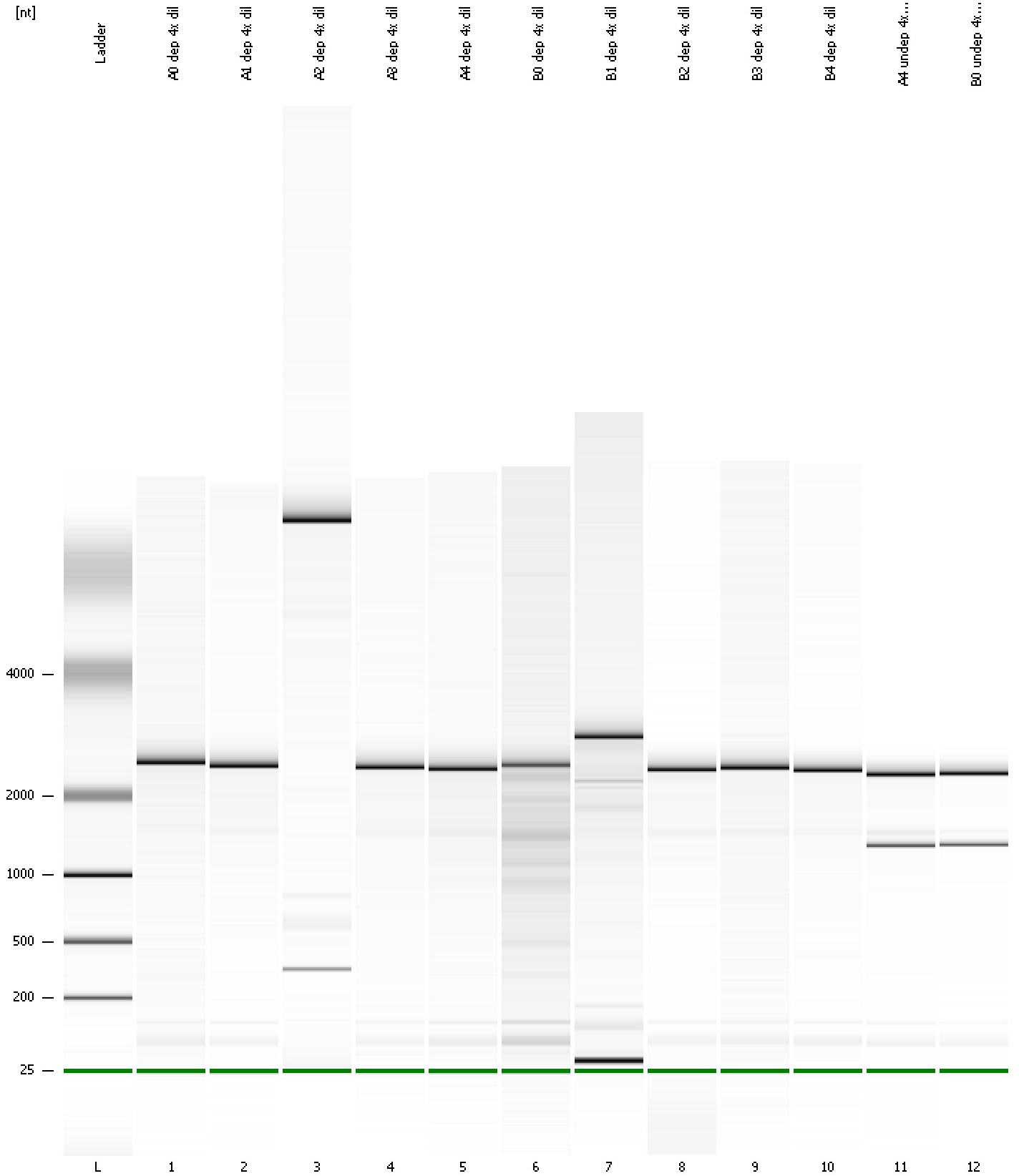
Fragment table for sample 12 : B0 undep 4x dil

Name	Start Size [nt]	End Size [nt]	Area	% of total Area
rRNA1	1,341	1,648	103.6	28.3
rRNA 1	2,293	2,805	172.5	47.0

Assay Class: mRNA Nano
Data Path: C:\...ings\Bioanalyzer\2012-03-12\2012-03-12_003_ErinLynch_HS.xad

Created: 3/12/2012 1:19:02 PM
Modified: 3/15/2012 1:05:21 PM

Gel Image



Assay Class: mRNA Nano Created: 3/12/2012 1:19:02 PM
 Data Path: C:\...ings\Bioanalyzer\2012-03-12\2012-03-12_003_ErinLynch_HS.xad Modified: 3/15/2012 1:05:21 PM

Run Logbook

Description	Number	Source	Category	Sub Category	Time	Time Zone	User	Host
Run ended on port 1 (Number of wells acquired: 13)		Instrument	Run		3/12/2012 1:46:04 PM	(GMT --07:00) Pacific Standard Time	UC Davis	D8XSMGH1
Run started on port 1 (File: C:\Documents and Settings\Bioanalyzer\2012-03-12\2012-03-12_003.xad)		Instrument	Run		3/12/2012 1:19:07 PM	(GMT --07:00) Pacific Standard Time	UC Davis	D8XSMGH1
Product Number : G2938B		Instrument	Run		3/12/2012 1:19:07 PM	(GMT --07:00) Pacific Standard Time	UC Davis	D8XSMGH1
Name :		Instrument	Run		3/12/2012 1:19:07 PM	(GMT --07:00) Pacific Standard Time	UC Davis	D8XSMGH1
Vendor : Agilent Technologies		Instrument	Run		3/12/2012 1:19:07 PM	(GMT --07:00) Pacific Standard Time	UC Davis	D8XSMGH1
Serial# : DE13701086		Instrument	Run		3/12/2012 1:19:07 PM	(GMT --07:00) Pacific Standard Time	UC Davis	D8XSMGH1
Firmware : C.01.069		Instrument	Run		3/12/2012 1:19:07 PM	(GMT --07:00) Pacific Standard Time	UC Davis	D8XSMGH1
Cartridge : Electrode		Instrument	Run		3/12/2012 1:19:07 PM	(GMT --07:00) Pacific Standard Time	UC Davis	D8XSMGH1