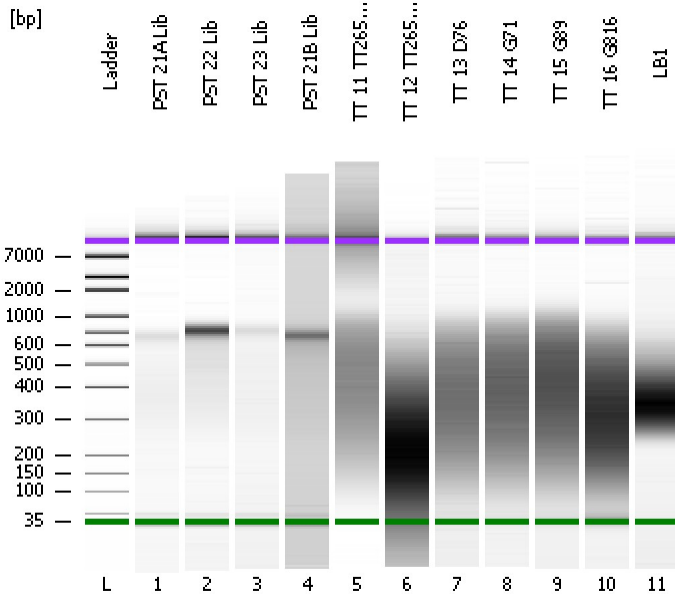


Assay Class: High Sensitivity DNA Assay  
Data Path: C:\...ents and Settings\Bioanalyzer\2012-03-13\2012-03-13\_001.xad

Created: 3/13/2012 9:22:30 AM  
Modified: 3/13/2012 10:12:37 AM

### Electrophoresis File Run Summary



#### Instrument Information:

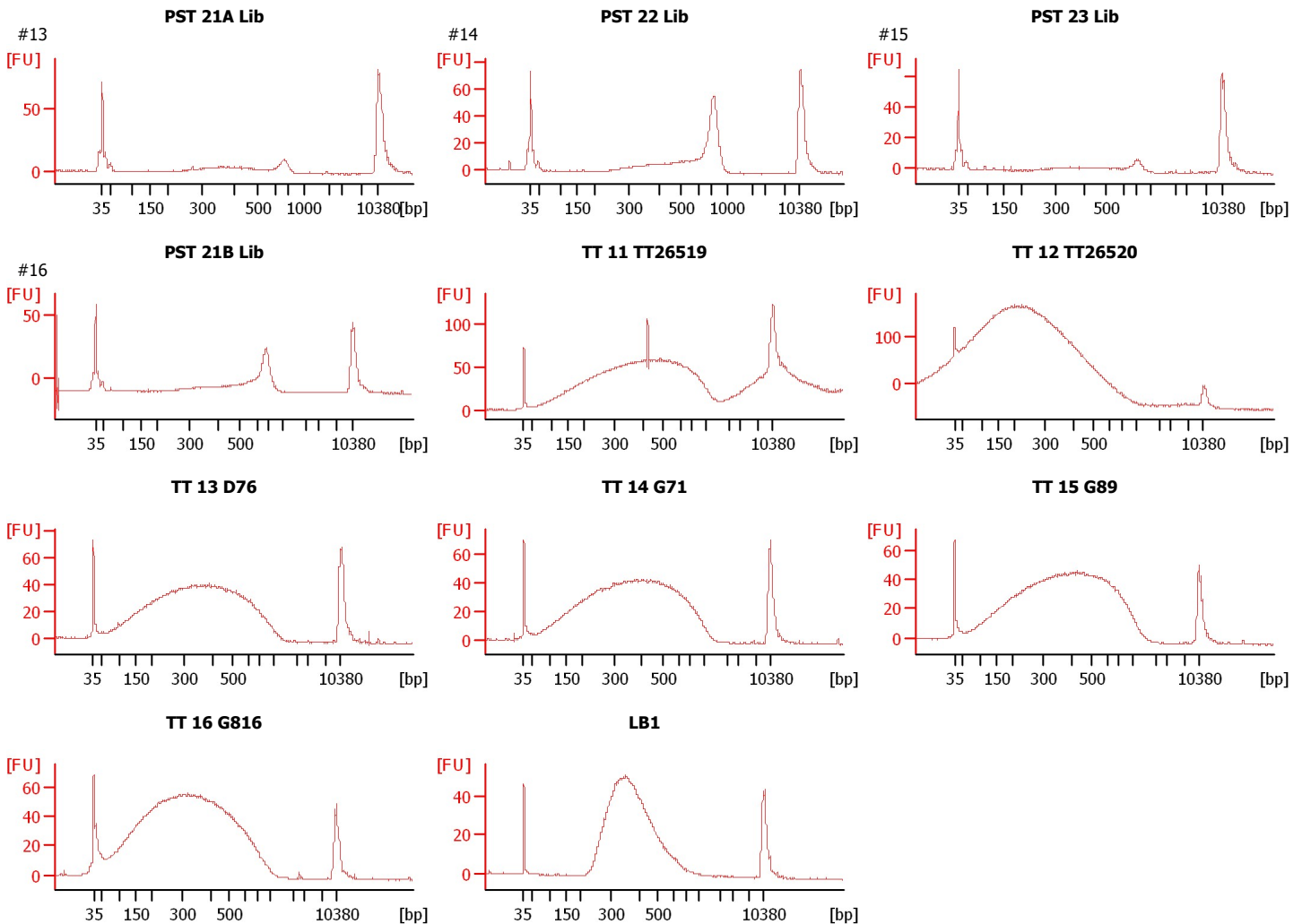
Instrument Name: DE13701086      Firmware: C.01.069  
Serial#: DE13701086      Type: G2938B

#### Assay Information:

Assay Origin Path: C:\Program Files\Agilent\2100 bioanalyzer\2100 expert\assays\dsDNA\High Sensitivity DNA.xsy  
Assay Class: High Sensitivity DNA Assay  
Version: 1.03  
Assay Comments: Copyright © 2003-2010 Agilent Technologies

#### Chip Information:

Chip Lot #:      Reagent Kit Lot #:      Chip Comments:



Assay Class: High Sensitivity DNA Assay  
Data Path: C:\...ents and Settings\Bioanalyzer\2012-03-13\2012-03-13\_001.xad

Created: 3/13/2012 9:22:30 AM  
Modified: 3/13/2012 10:12:37 AM

**Electrophoresis File Run Summary (Chip Summary)**

Sample Name	Sample Comment	Rest. Digest	Status	Observation	Result Label	Result Color
PST 21A Lib	#13	<input type="checkbox"/>	✓			
PST 22 Lib	#14	<input type="checkbox"/>	✓			
PST 23 Lib	#15	<input type="checkbox"/>	✓			
PST 21B Lib	#16	<input type="checkbox"/>	✓			
TT 11 TT26519		<input type="checkbox"/>	✓			
TT 12 TT26520		<input type="checkbox"/>	✓			
TT 13 D76		<input type="checkbox"/>	✓			
TT 14 G71		<input type="checkbox"/>	✓			
TT 15 G89		<input type="checkbox"/>	✓			
TT 16 G816		<input type="checkbox"/>	✓			
LB1		<input type="checkbox"/>	✓			
Ladder		<input type="checkbox"/>	✓			

**Chip Lot #****Reagent Kit Lot #****Chip Comments :**

Assay Class: High Sensitivity DNA Assay  
Data Path: C:\...ents and Settings\Bioanalyzer\2012-03-13\2012-03-13\_001.xad

Created: 3/13/2012 9:22:30 AM  
Modified: 3/13/2012 10:12:37 AM

**Electrophoresis Assay Details**

**General Analysis Settings**

Number of Available Sample and Ladder Wells (Max.) : 12  
Minimum Visible Range [s] : 32  
Maximum Visible Range [s] : 138  
Start Analysis Time Range [s] : 33  
End Analysis Time Range [s] : 137.5  
Ladder Concentration [pg/μl] : 1950  
Uses Standard Area for Ladder Fragments  
Lower Marker Concentration [pg/μl] : 125  
Upper Marker Concentration [pg/μl] : 75  
Used Upper Marker for Quantitation  
Standard Curve Fit is Point to Point  
Show Data Aligned to Lower and Upper Marker

**Integrator Settings**

Integration Start Time [s] : 33.05  
Integration End Time [s] : 137  
Slope Threshold : 0.8  
Height Threshold [FU] : 5  
Area Threshold : 0.1  
Width Threshold [s] : 0.6  
Baseline Plateau [s] : 0.5

**Filter Settings**

Filter Width [s] : 0.5  
Polynomial Order : 4

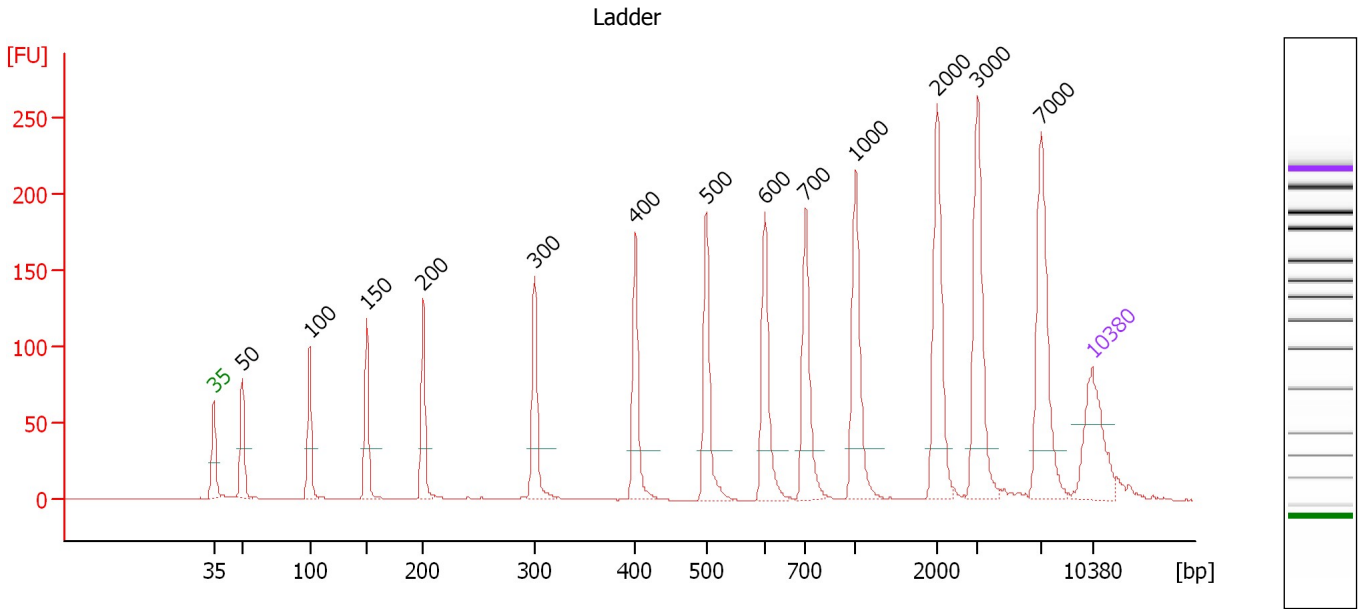
**Ladder**

Ladder Peak	Size	Area
1	35	160
2	50	210
3	100	208
4	150	221
5	200	242
6	300	270
7	400	305
8	500	306
9	600	336
10	700	321
11	1000	366
12	2000	413
13	3000	411
14	7000	400
15	10380	214

Assay Class: High Sensitivity DNA Assay  
 Data Path: C:\...ents and Settings\Bioanalyzer\2012-03-13\2012-03-13\_001.xad

Created: 3/13/2012 9:22:30 AM  
 Modified: 3/13/2012 10:12:37 AM

**Electropherogram Summary**



**Overall Results for Ladder**

Noise: 0.2

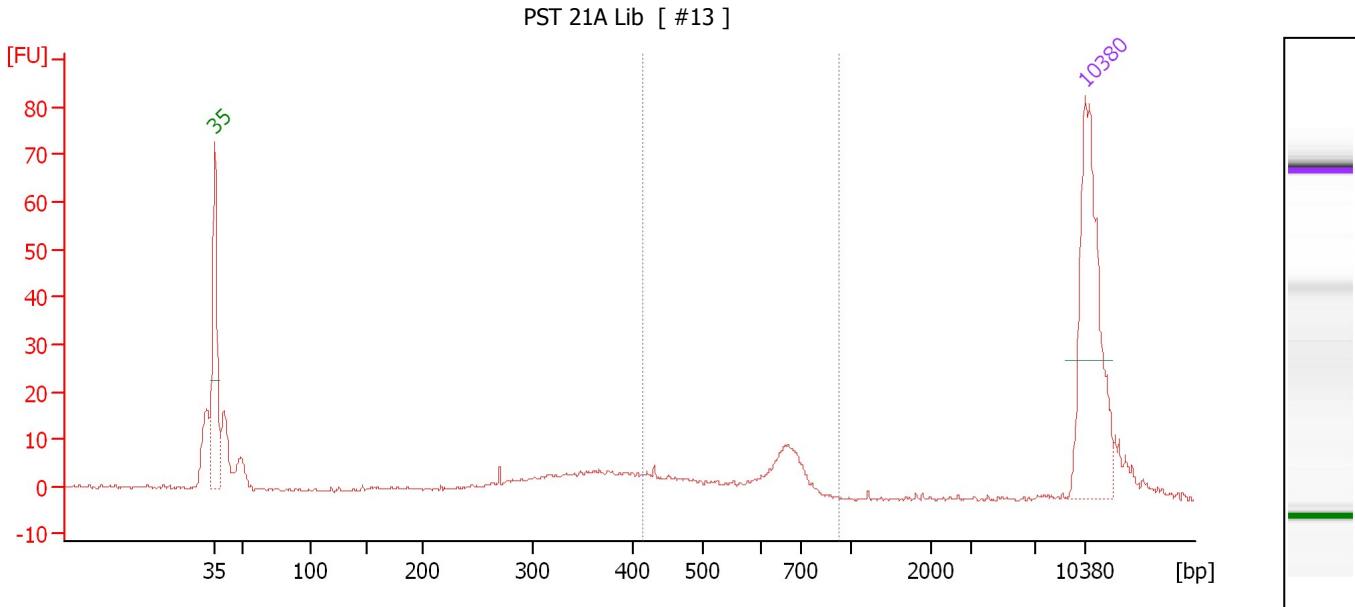
**Peak table for Ladder**

Peak	Size [bp]	Conc. [pg/μl]	Molarity [pmol/l]	Observations
1	35	125.00	5,411.3	Lower Marker
2	50	150.00	4,545.5	Ladder Peak
3	100	150.00	2,272.7	Ladder Peak
4	150	150.00	1,515.2	Ladder Peak
5	200	150.00	1,136.4	Ladder Peak
6	300	150.00	757.6	Ladder Peak
7	400	150.00	568.2	Ladder Peak
8	500	150.00	454.5	Ladder Peak
9	600	150.00	378.8	Ladder Peak
10	700	150.00	324.7	Ladder Peak
11	1,000	150.00	227.3	Ladder Peak
12	2,000	150.00	113.6	Ladder Peak
13	3,000	150.00	75.8	Ladder Peak
14	7,000	150.00	32.5	Ladder Peak
15	10,380	75.00	10.9	Upper Marker

Assay Class: High Sensitivity DNA Assay  
 Data Path: C:\...ents and Settings\Bioanalyzer\2012-03-13\2012-03-13\_001.xad

Created: 3/13/2012 9:22:30 AM  
 Modified: 3/13/2012 10:12:37 AM

**Electropherogram Summary Continued ...**



**Setpoint Deviations for sample 1 : PST 21A Lib**

Height Threshold [FU] : 20

**Overall Results for sample 1 : PST 21A Lib**

Number of peaks found: 0                      Corr. Area 1: 67.7  
 Noise: 0.4

**Peak table for sample 1 : PST 21A Lib**

Peak	Size [bp]	Conc. [pg/μl]	Molarity [pmol/l]	Observations
1	35	125.00	5,411.3	Lower Marker
2	10,380	75.00	10.9	Upper Marker

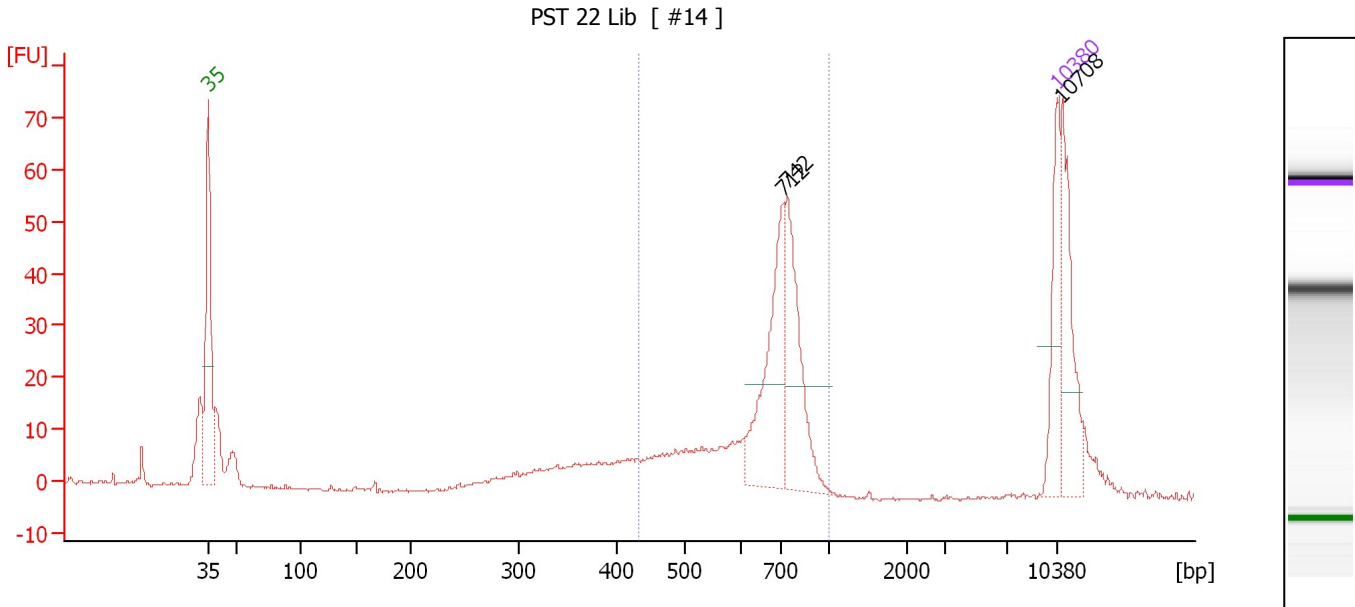
**Region table for sample 1 : PST 21A Lib**

From [bp]	Molarity [pmol/l]	Average Size [bp]	Conc. [pg/μl]	To [bp]	Corr. Area	% of Total	Size distribution in CV [%]	Color
415	133.9	585	49.57	926	67.7	31	17.1	Blue

Assay Class: High Sensitivity DNA Assay  
 Data Path: C:\...ents and Settings\Bioanalyzer\2012-03-13\2012-03-13\_001.xad

Created: 3/13/2012 9:22:30 AM  
 Modified: 3/13/2012 10:12:37 AM

**Electropherogram Summary Continued ...**



**Setpoint Deviations for sample 2 : PST 22 Lib**

Height Threshold [FU] : 20

**Overall Results for sample 2 : PST 22 Lib**

Number of peaks found: 3                      Corr. Area 1: 282.7  
 Noise: 0.2

**Peak table for sample 2 : PST 22 Lib**

Peak	Size [bp]	Conc. [pg/μl]	Molarity [pmol/l]	Observations
1	35	125.00	5,411.3	Lower Marker
2	712	187.04	397.9	
3	742	173.95	355.2	
4	10,380	75.00	10.9	Upper Marker
5	10,708	0.00	0.0	

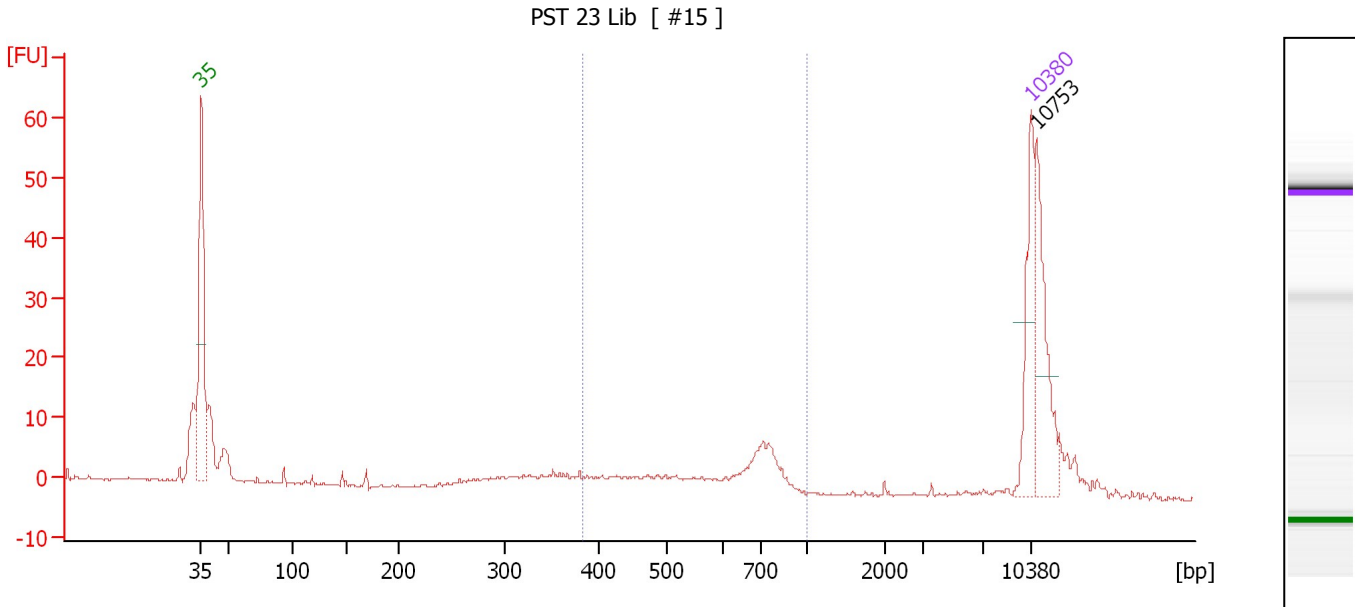
**Region table for sample 2 : PST 22 Lib**

From [bp]	Molarity [pmol/l]	Average Size [bp]	Conc. [pg/μl]	To [bp]	Corr. Area	% of Total	Size distribution in CV [%]	Color
433	1,243.2	673	529.63	1,000	282.7	54	17.3	Blue

Assay Class: High Sensitivity DNA Assay  
 Data Path: C:\...ents and Settings\Bioanalyzer\2012-03-13\2012-03-13\_001.xad

Created: 3/13/2012 9:22:30 AM  
 Modified: 3/13/2012 10:12:37 AM

**Electropherogram Summary Continued ...**



**Setpoint Deviations for sample 3 : PST 23 Lib**

Height Threshold [FU] : 20

**Overall Results for sample 3 : PST 23 Lib**

Number of peaks found: 1                      Corr. Area 1: 57.6  
 Noise: 0.2

**Peak table for sample 3 : PST 23 Lib**

Peak	Size [bp]	Conc. [pg/μl]	Molarity [pmol/l]	Observations
1	35	125.00	5,411.3	Lower Marker
2	10,380	75.00	10.9	Upper Marker
3	10,753	0.00	0.0	

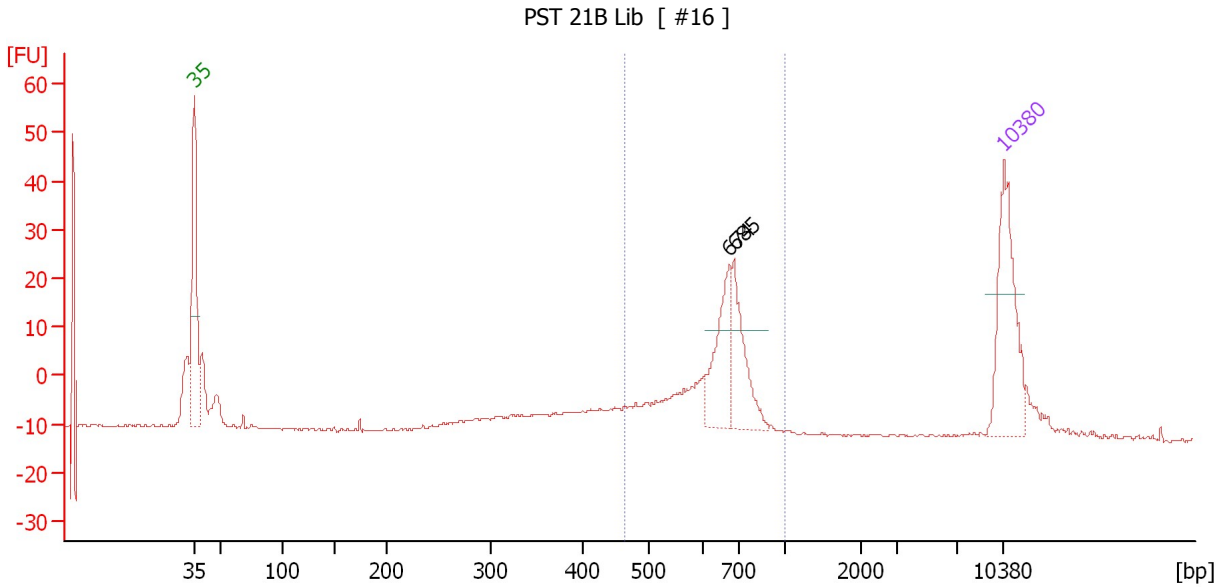
**Region table for sample 3 : PST 23 Lib**

From [bp]	Molarity [pmol/l]	Average Size [bp]	Conc. [pg/μl]	To [bp]	Corr. Area	% of Total	Size distribution in CV [%]	Color
382	339.7	612	127.51	995	57.6	27	22.6	Blue

Assay Class: High Sensitivity DNA Assay  
 Data Path: C:\...ents and Settings\Bioanalyzer\2012-03-13\2012-03-13\_001.xad

Created: 3/13/2012 9:22:30 AM  
 Modified: 3/13/2012 10:12:37 AM

**Electropherogram Summary Continued ...**



**Setpoint Deviations for sample 4 : PST 21B Lib**

Height Threshold [FU] : 20

**Overall Results for sample 4 : PST 21B Lib**

Number of peaks found: 2                      Corr. Area 1: 47.8  
 Noise: 0.2

**Peak table for sample 4 : PST 21B Lib**

Peak	Size [bp]	Conc. [pg/μl]	Molarity [pmol/l]	Observations
1	35	125.00	5,411.3	Lower Marker
2	674	63.67	143.2	
3	685	58.39	129.1	
4	10,380	75.00	10.9	Upper Marker

**Region table for sample 4 : PST 21B Lib**

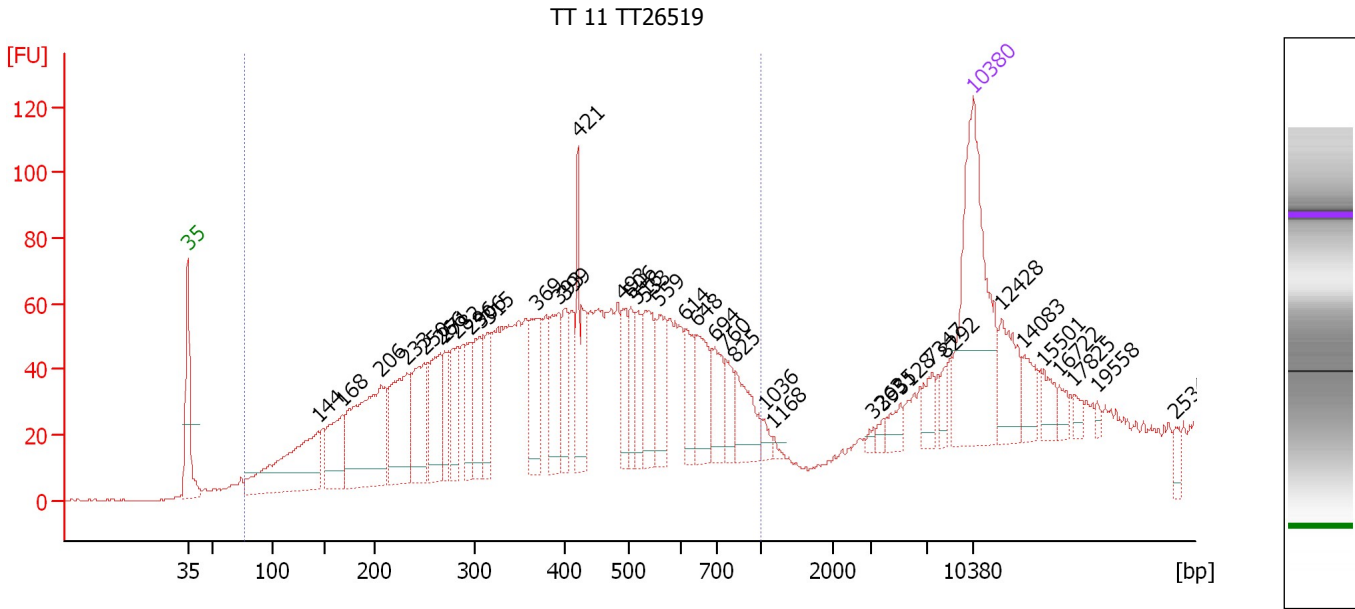
From [bp]	Molarity [pmol/l]	Average Size [bp]	Conc. [pg/μl]	To [bp]	Corr. Area	% of Total	Size distribution in CV [%]	Color
464	126.4	676	56.36	1,000	47.8	91	3.6	Blue



Assay Class: High Sensitivity DNA Assay  
 Data Path: C:\...ents and Settings\Bioanalyzer\2012-03-13\2012-03-13\_001.xad

Created: 3/13/2012 9:22:30 AM  
 Modified: 3/13/2012 10:12:37 AM

**Electropherogram Summary Continued ...**



**Overall Results for sample 5 : TT 11 TT26519**

Number of peaks found: 39                      Corr. Area 1: 2,162.3  
 Noise: 0.3

**Peak table for sample 5 : TT 11 TT26519**

Peak	Size [bp]	Conc. [pg/μl]	Molarity [pmol/l]	Observations
1	35	125.00	5,411.3	Lower Marker
2	144	85.84	903.3	
3	168	39.87	360.3	
4	206	96.67	710.0	
5	233	56.64	369.1	
6	250	43.85	266.1	
7	266	39.11	223.0	
8	271	20.14	112.8	
9	282	27.64	148.6	
10	296	21.51	110.0	
11	306	24.70	122.4	
12	315	21.74	104.7	
13	369	37.07	152.4	
14	393	32.83	126.4	
15	399	20.09	76.2	
16	421	38.77	139.5	
17	493	16.99	52.3	
18	506	16.63	49.8	
19	516	16.14	47.4	
20	533	31.20	88.7	
21	559	24.52	66.4	
22	614	17.60	43.4	
23	648	25.36	59.3	
24	694	18.67	40.8	
25	760	11.37	22.7	
26	825	22.30	41.0	

Assay Class: High Sensitivity DNA Assay  
 Data Path: C:\...ents and Settings\Bioanalyzer\2012-03-13\2012-03-13\_001.xad


Created: 3/13/2012 9:22:30 AM  
 Modified: 3/13/2012 10:12:37 AM

**Electropherogram Summary Continued ...**

**... Peak table for sample 5 : TT 11 TT26519**

Peak	Size [bp]	Conc. [pg/μl]	Molarity [pmol/l]	Observations
27	1,036	3.65	5.3	
28	1,168	1.53	2.0	
29	3,263	1.93	0.9	
30	3,935	2.52	1.0	
31	5,128	6.14	1.8	
32	7,347	8.31	1.7	
33	8,292	4.63	0.8	
34	10,380	75.00	10.9	Upper Marker
35	12,428	0.00	0.0	
36	14,083	0.00	0.0	
37	15,501	0.00	0.0	
38	16,722	0.00	0.0	
39	17,825	0.00	0.0	
40	19,558	0.00	0.0	
41	25,349	0.00	0.0	

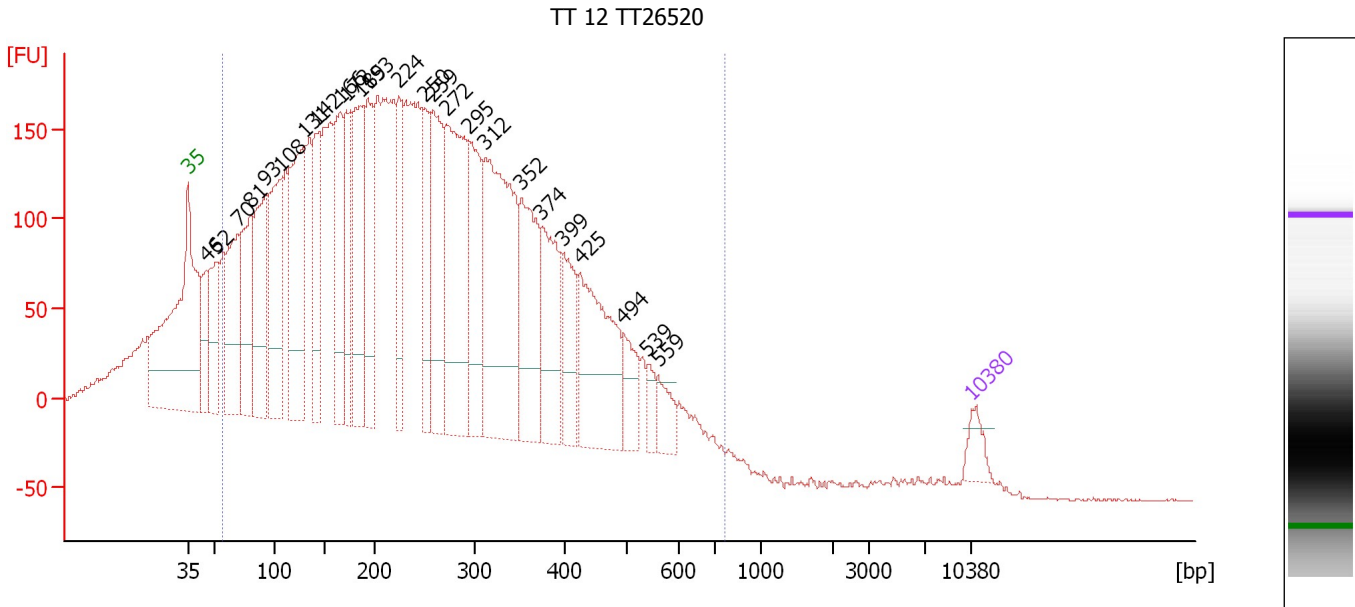
**Region table for sample 5 : TT 11 TT26519**

From [bp]	Molarity [pmol/l]	Average Size [bp]	Conc. [pg/μl]	To [bp]	Corr. Area	% of Total	Size distribution in CV [%]	Color
76	5,760.7	407	1,082.82	1,000	2,162.3	88	43.9	

Assay Class: High Sensitivity DNA Assay  
 Data Path: C:\...ents and Settings\Bioanalyzer\2012-03-13\2012-03-13\_001.xad

Created: 3/13/2012 9:22:30 AM  
 Modified: 3/13/2012 10:12:37 AM

**Electropherogram Summary Continued ...**



**Setpoint Deviations for sample 6 : TT 12 TT26520**

Height Threshold [FU] : 40

**Overall Results for sample 6 : TT 12 TT26520**

Number of peaks found: 25                      Corr. Area 1: 8,581.1  
 Noise: 0.5

**Peak table for sample 6 : TT 12 TT26520**

Peak	Size [bp]	Conc. [pg/μl]	Molarity [pmol/l]	Observations
1	35	125.00	5,411.3	Lower Marker
2	46	322.17	10,705.7	
3	52	419.02	12,170.3	
4	70	705.22	15,173.9	
5	81	679.18	12,758.4	
6	93	767.18	12,482.5	
7	108	875.81	12,329.3	
8	131	1,061.90	12,310.7	
9	142	578.22	6,182.6	
10	166	678.46	6,193.9	
11	172	498.56	4,397.2	
12	185	729.45	5,973.7	
13	193	617.92	4,852.1	
14	224	417.09	2,821.4	
15	250	439.77	2,668.0	
16	259	758.38	4,438.6	
17	272	1,195.89	6,667.5	
18	295	606.27	3,109.9	
19	312	1,372.58	6,663.4	
20	352	655.50	2,822.6	
21	374	537.96	2,176.9	
22	399	336.98	1,278.5	

Assay Class: High Sensitivity DNA Assay  
 Data Path: C:\...ents and Settings\Bioanalyzer\2012-03-13\2012-03-13\_001.xad


Created: 3/13/2012 9:22:30 AM  
 Modified: 3/13/2012 10:12:37 AM

### Electropherogram Summary Continued ...

#### ... Peak table for sample 6 : TT 12 TT26520

Peak	Size [bp]	Conc. [pg/μl]	Molarity [pmol/l]	Observations
23	425	744.84	2,653.9	
24	494	205.84	630.8	
25	539	83.02	233.3	
26	559	127.48	345.8	
27	10,380	75.00	10.9	Upper Marker

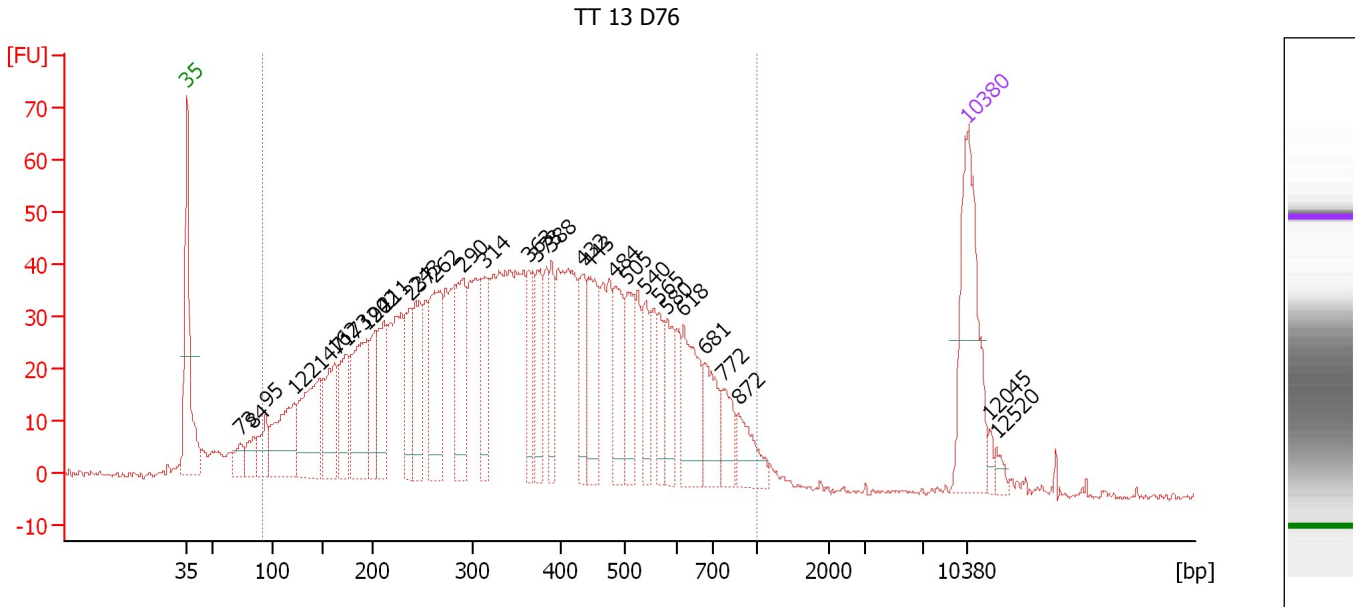
#### Region table for sample 6 : TT 12 TT26520

From [bp]	Molarity [pmol/l]	Average Size [bp]	Conc. [pg/μl]	To [bp]	Corr. Area	% of Total	Size distribution in CV [%]	Color
57	170,069.0	259	19,120.76	757	8,581.1	93	49.1	

Assay Class: High Sensitivity DNA Assay  
 Data Path: C:\...ents and Settings\Bioanalyzer\2012-03-13\2012-03-13\_001.xad

Created: 3/13/2012 9:22:30 AM  
 Modified: 3/13/2012 10:12:37 AM

**Electropherogram Summary Continued ...**



**Overall Results for sample 7 : TT 13 D76**

Number of peaks found: 31                      Corr. Area 1: 1,887.7  
 Noise: 0.4

**Peak table for sample 7 : TT 13 D76**

Peak	Size [bp]	Conc. [pg/μl]	Molarity [pmol/l]	Observations
1	35	125.00	5,411.3	Lower Marker
2	73	15.73	327.3	
3	84	19.71	355.7	
4	95	29.06	465.0	
5	122	75.07	935.2	
6	147	89.83	926.7	
7	162	61.75	578.6	
8	173	51.56	450.6	
9	194	91.63	717.2	
10	202	37.97	285.4	
11	211	50.40	362.4	
12	237	43.38	277.2	
13	243	53.28	332.2	
14	262	83.93	485.6	
15	290	68.27	356.2	
16	314	40.37	194.9	
17	363	37.26	155.4	
18	373	39.03	158.6	
19	388	32.94	128.5	
20	432	30.45	106.7	
21	443	50.12	171.6	
22	484	46.41	145.3	
23	505	36.55	109.6	
24	540	27.13	76.1	
25	565	21.33	57.2	
26	580	29.11	76.0	

Assay Class: High Sensitivity DNA Assay  
 Data Path: C:\...ents and Settings\Bioanalyzer\2012-03-13\2012-03-13\_001.xad


Created: 3/13/2012 9:22:30 AM  
 Modified: 3/13/2012 10:12:37 AM

### Electropherogram Summary Continued ...

#### ... Peak table for sample 7 : TT 13 D76

Peak	Size [bp]	Conc. [pg/μl]	Molarity [pmol/l]	Observations
27	618	52.62	128.9	
28	681	34.41	76.6	
29	772	23.25	45.7	
30	872	23.79	41.3	
31	10,380	75.00	10.9	Upper Marker
32	12,045	0.00	0.0	
33	12,520	0.00	0.0	

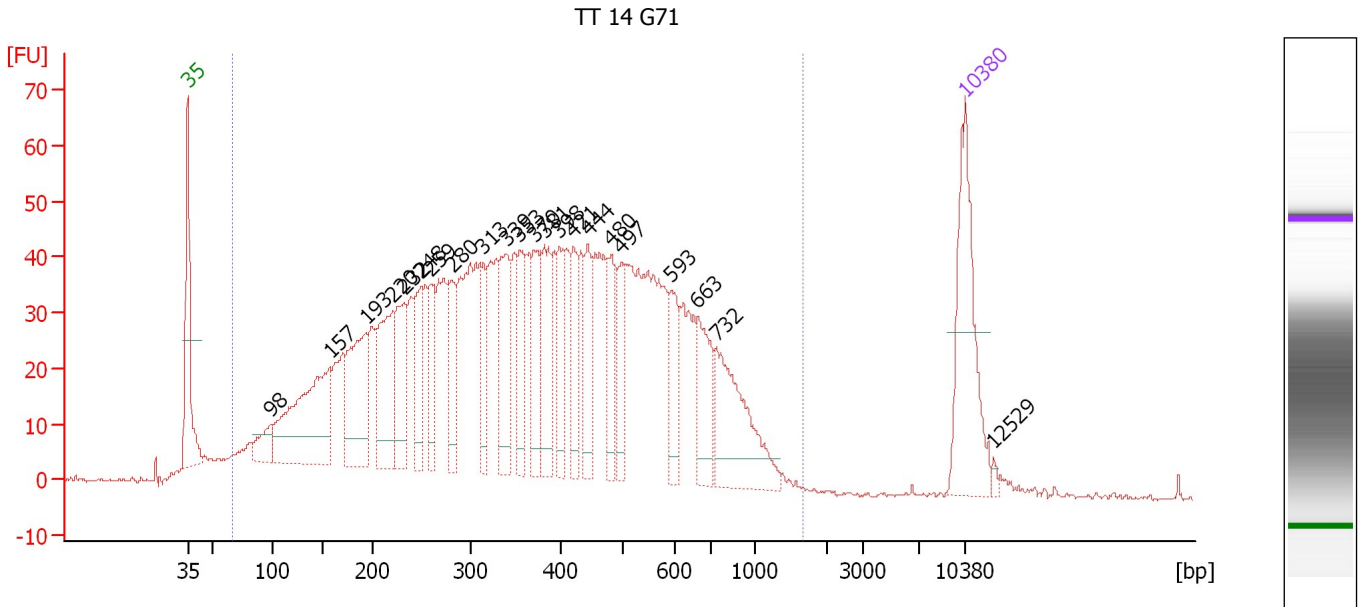
#### Region table for sample 7 : TT 13 D76

From [bp]	Molarity [pmol/l]	Average Size [bp]	Conc. [pg/μl]	To [bp]	Corr. Area	% of Total	Size distribution in CV [%]	Color
93	11,348.5	381	2,006.44	1,000	1,887.7	95	45.1	

Assay Class: High Sensitivity DNA Assay  
 Data Path: C:\...ents and Settings\Bioanalyzer\2012-03-13\2012-03-13\_001.xad

Created: 3/13/2012 9:22:30 AM  
 Modified: 3/13/2012 10:12:37 AM

**Electropherogram Summary Continued ...**



**Overall Results for sample 8 : TT 14 G71**

Number of peaks found: 22                      Corr. Area 1: 2,052.6  
 Noise: 0.3

**Peak table for sample 8 : TT 14 G71**

Peak	Size [bp]	Conc. [pg/μl]	Molarity [pmol/l]	Observations
1	35	125.00	5,411.3	Lower Marker
2	98	25.77	398.1	
3	157	153.35	1,480.1	
4	193	99.19	777.7	
5	220	89.82	618.1	
6	232	60.03	392.8	
7	248	42.96	262.2	
8	259	40.60	237.9	
9	280	42.33	228.9	
10	313	37.12	179.4	
11	339	58.90	263.2	
12	353	44.36	190.2	
13	370	51.05	208.9	
14	381	52.97	210.7	
15	398	43.64	166.0	
16	421	35.01	126.1	
17	444	39.55	135.1	
18	480	34.97	110.4	
19	497	31.49	96.0	
20	593	33.83	86.4	
21	663	42.49	97.1	
22	732	85.30	176.5	
23	10,380	75.00	10.9	Upper Marker
24	12,529	0.00	0.0	


Assay Class: High Sensitivity DNA Assay  
Data Path: C:\...ents and Settings\Bioanalyzer\2012-03-13\2012-03-13\_001.xad

Created: 3/13/2012 9:22:30 AM  
Modified: 3/13/2012 10:12:37 AM

**Electropherogram Summary Continued ...**

... Region table for sample 8 :

TT 14 G71

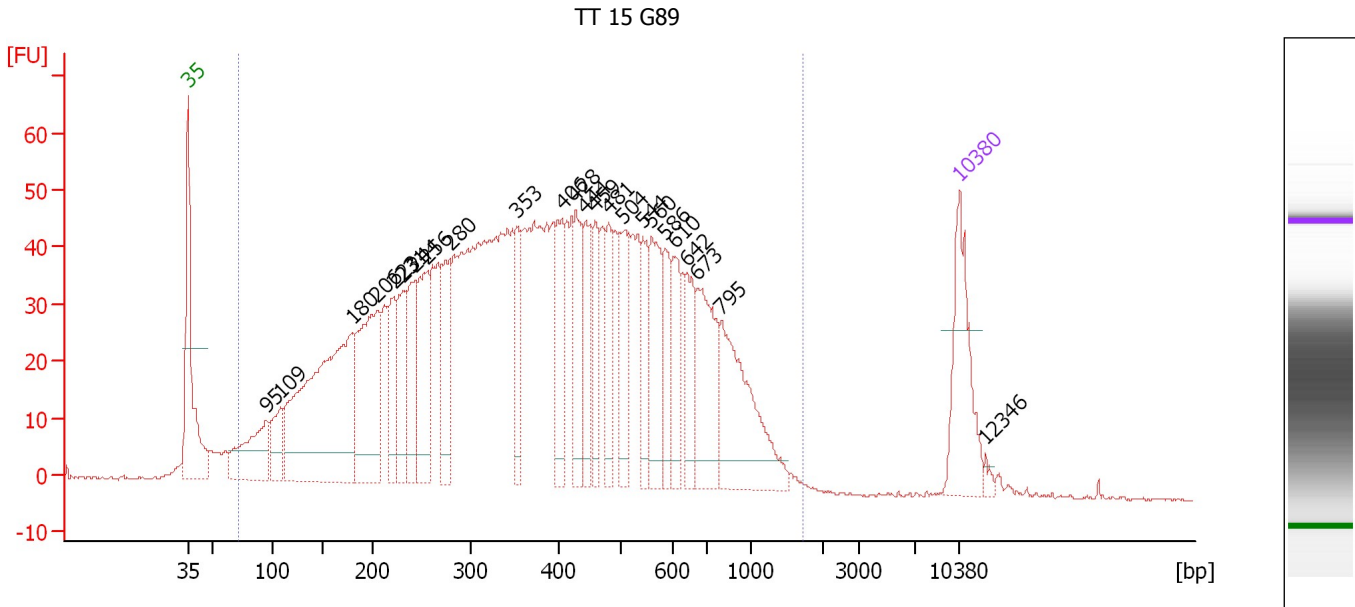
From [bp]	Molarity [pmol/l]	Average Size [bp]	Conc. [pg/μl]	To [bp]	Corr. Area	% of Total	Size distribution in CV [%]	Color
66	13,018.3	400	2,231.66	1,669	2,052.6	98	50.8	



Assay Class: High Sensitivity DNA Assay  
 Data Path: C:\...ents and Settings\Bioanalyzer\2012-03-13\2012-03-13\_001.xad

Created: 3/13/2012 9:22:30 AM  
 Modified: 3/13/2012 10:12:37 AM

**Electropherogram Summary Continued ...**



**Overall Results for sample 9 : TT 15 G89**

Number of peaks found: 24                      Corr. Area 1: 2,253.6  
 Noise: 0.3

**Peak table for sample 9 : TT 15 G89**

Peak	Size [bp]	Conc. [pg/μl]	Molarity [pmol/l]	Observations
1	35	125.00	5,411.3	Lower Marker
2	95	103.87	1,655.6	
3	109	50.85	709.8	
4	180	379.65	3,192.1	
5	206	181.17	1,335.5	
6	223	66.55	452.2	
7	231	71.92	471.4	
8	244	73.35	456.0	
9	256	100.40	593.6	
10	280	78.83	427.0	
11	353	55.33	237.5	
12	406	70.59	263.5	
13	428	70.33	248.8	
14	444	64.45	220.1	
15	459	48.64	160.5	
16	481	47.35	149.0	
17	504	66.67	200.3	
18	544	44.67	124.5	
19	560	76.94	208.1	
20	586	48.53	125.4	
21	610	48.68	120.9	
22	642	47.66	112.5	
23	673	98.22	221.1	
24	795	132.25	252.1	
25	10,380	75.00	10.9	Upper Marker
26	12,346	0.00	0.0	


Assay Class: High Sensitivity DNA Assay  
Data Path: C:\...ents and Settings\Bioanalyzer\2012-03-13\2012-03-13\_001.xad

Created: 3/13/2012 9:22:30 AM  
Modified: 3/13/2012 10:12:37 AM

**Electropherogram Summary Continued ...**

... Region table for sample 9 :

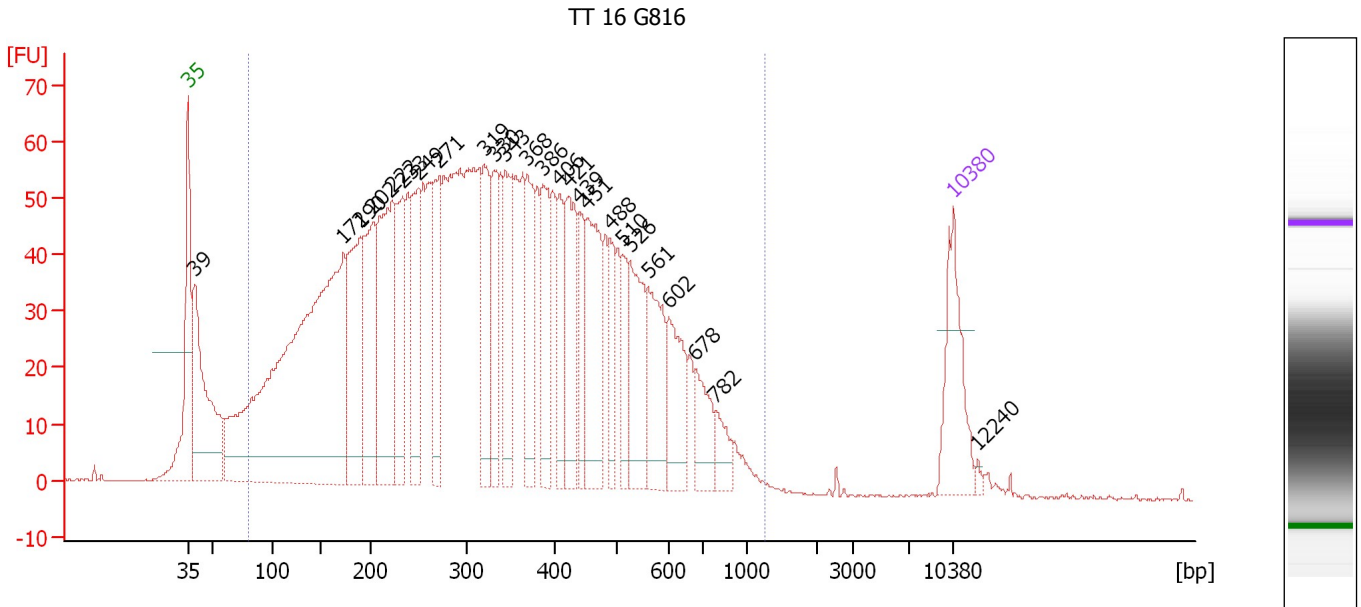
TT 15 G89

From [bp]	Molarity [pmol/l]	Average Size [bp]	Conc. [pg/μl]	To [bp]	Corr. Area	% of Total	Size distribution in CV [%]	Color
71	18,764.4	419	3,309.74	1,733	2,253.6	98	53.5	

Assay Class: High Sensitivity DNA Assay  
 Data Path: C:\...ents and Settings\Bioanalyzer\2012-03-13\2012-03-13\_001.xad

Created: 3/13/2012 9:22:30 AM  
 Modified: 3/13/2012 10:12:37 AM

**Electropherogram Summary Continued ...**



**Overall Results for sample 10 : TT 16 G816**

Number of peaks found: 25      Corr. Area 1: 2,655.5  
 Noise: 0.2

**Peak table for sample 10 : TT 16 G816**

Peak	Size [bp]	Conc. [pg/μl]	Molarity [pmol/l]	Observations
1	35	125.00	5,411.3	Lower Marker
2	39	263.59	10,202.0	
3	172	884.02	7,775.5	
4	190	186.45	1,490.0	
5	202	178.76	1,340.3	
6	222	242.73	1,657.7	
7	233	116.13	755.6	
8	249	108.27	657.9	
9	271	107.16	599.6	
10	319	105.05	499.4	
11	330	83.36	382.4	
12	343	97.69	431.5	
13	368	90.41	372.3	
14	386	94.66	372.0	
15	406	60.59	226.0	
16	421	108.61	390.9	
17	439	60.10	207.4	
18	451	134.55	451.9	
19	488	48.21	149.6	
20	510	44.49	132.2	
21	526	98.23	283.2	
22	561	87.33	235.9	
23	602	79.83	200.8	
24	678	48.89	109.2	
25	782	26.37	51.1	
26	10,380	75.00	10.9	Upper Marker


Assay Class: High Sensitivity DNA Assay  
Data Path: C:\...ents and Settings\Bioanalyzer\2012-03-13\2012-03-13\_001.xad

Created: 3/13/2012 9:22:30 AM  
Modified: 3/13/2012 10:12:37 AM

**Electropherogram Summary Continued ...****... Peak table for sample 10 : TT 16 G816**

Peak	Size [bp]	Conc. [pg/ $\mu$ l]	Molarity [pmol/l]	Observations
27	12,240	0.00	0.0	

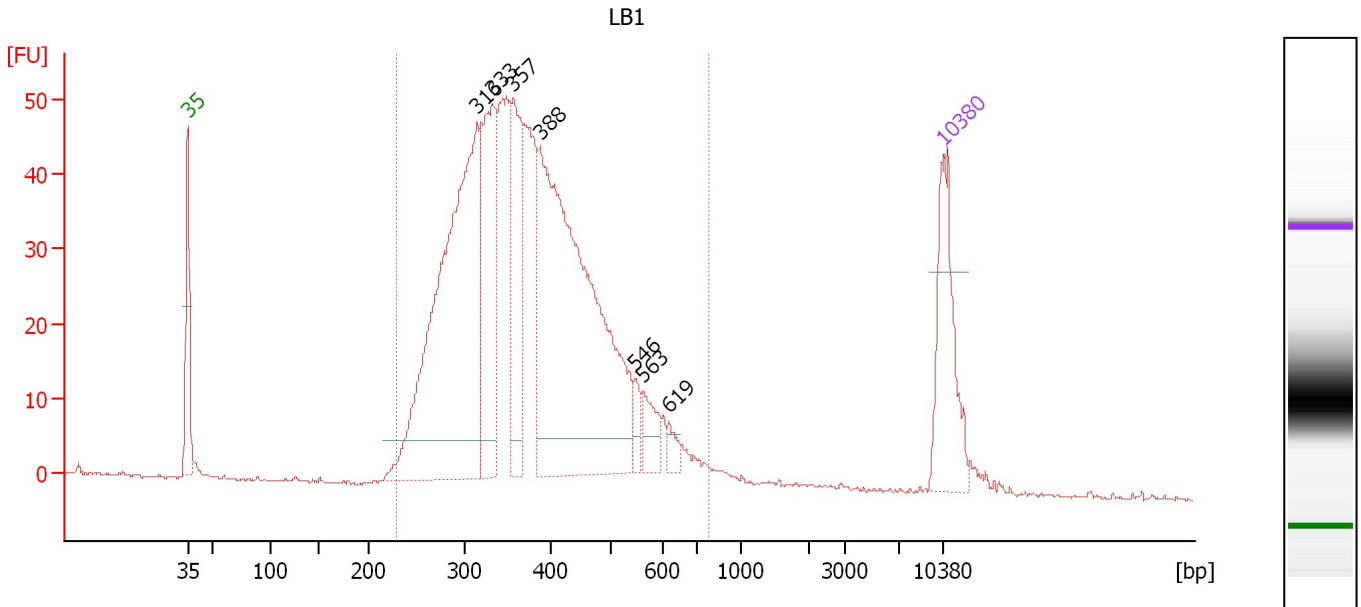
**Region table for sample 10 : TT 16 G816**

From [bp]	Molarity [pmol/l]	Average Size [bp]	Conc. [pg/ $\mu$ l]	To [bp]	Corr. Area	% of Total	Size distribution in CV [%]	Color
79	27,570.3	347	4,330.28	1,259	2,655.5	93	47.4	

Assay Class: High Sensitivity DNA Assay  
 Data Path: C:\...ents and Settings\Bioanalyzer\2012-03-13\2012-03-13\_001.xad

Created: 3/13/2012 9:22:30 AM  
 Modified: 3/13/2012 10:12:37 AM

**Electropherogram Summary Continued ...**



**Overall Results for sample 11 : LB1**

Number of peaks found: 7                      Corr. Area 1: 1,039.5  
 Noise: 0.1

**Peak table for sample 11 : LB1**

Peak	Size [bp]	Conc. [pg/μl]	Molarity [pmol/l]	Observations
1	35	125.00	5,411.3	Lower Marker
2	316	466.28	2,235.7	
3	333	168.90	768.0	
4	357	124.46	528.8	
5	388	489.04	1,910.0	
6	546	14.00	38.8	
7	563	25.98	69.9	
8	619	9.99	24.4	
9	10,380	75.00	10.9	Upper Marker

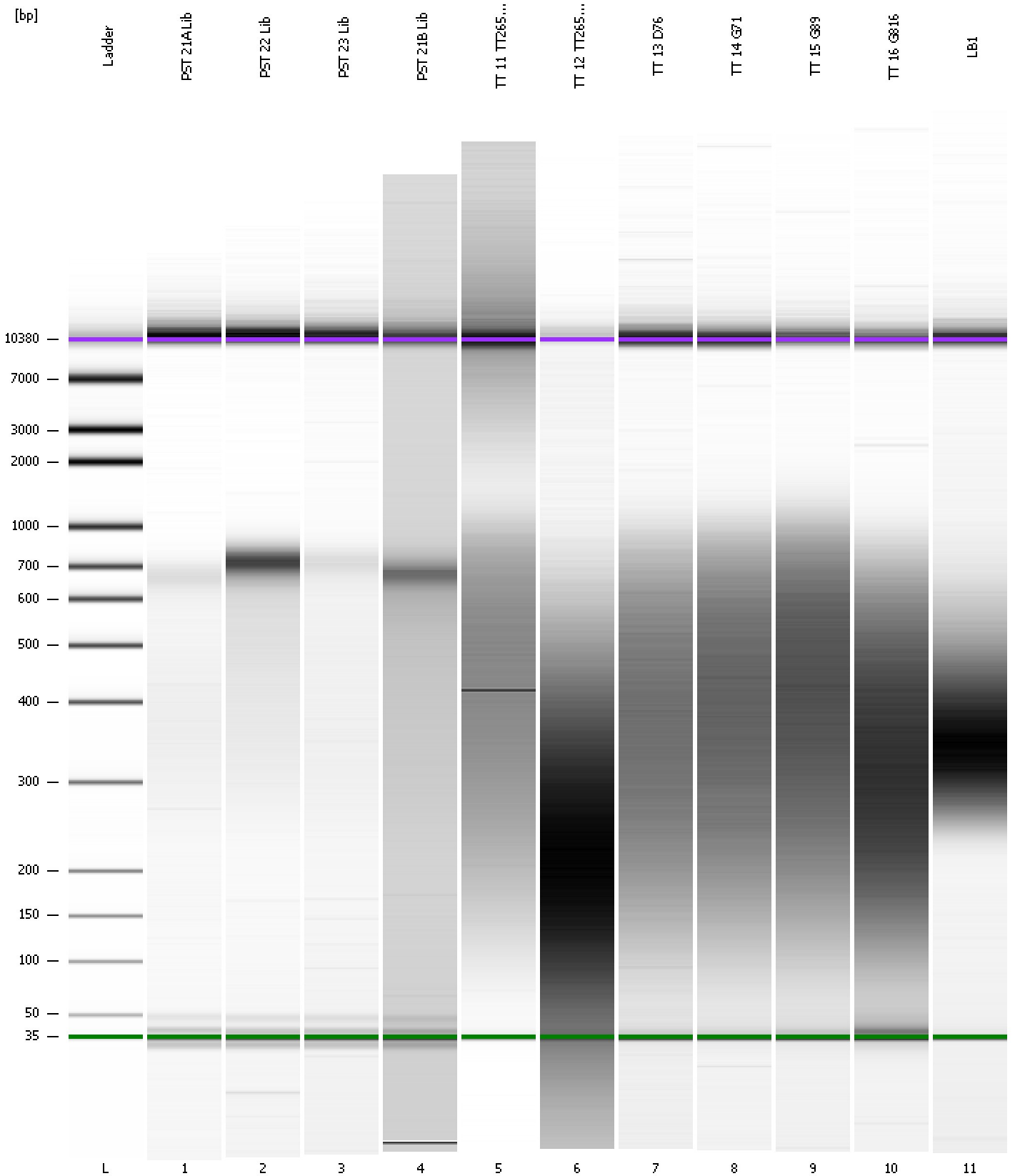
**Region table for sample 11 : LB1**

From [bp]	Molarity [pmol/l]	Average Size [bp]	Conc. [pg/μl]	To [bp]	Corr. Area	% of Total	Size distribution in CV [%]	Color
230	6,959.6	383	1,639.25	779	1,039.5	97	24.0	Blue

Assay Class: High Sensitivity DNA Assay  
Data Path: C:\...ents and Settings\Bioanalyzer\2012-03-13\2012-03-13\_001.xad

Created: 3/13/2012 9:22:30 AM  
Modified: 3/13/2012 10:12:37 AM

**Gel Image**



Assay Class: High Sensitivity DNA Assay  
 Data Path: C:\...ents and Settings\Bioanalyzer\2012-03-13\2012-03-13\_001.xad

Created: 3/13/2012 9:22:30 AM  
 Modified: 3/13/2012 10:12:37 AM

**Run Logbook**

Description	Number	Source	Category	Sub Category	Time	Time Zone	User	Host
Run ended on port 1 (Number of wells acquired: 12)		Instrument	Run		3/13/2012 10:03:47 AM	(GMT --07:00) Pacific Standard Time	UC Davis	D8XSMGH1
Run started on port 1 (File: C:\Documents and Settings\Bioanalyzer\2012-03-13\2012-03-13_001.xad)		Instrument	Run		3/13/2012 9:22:35 AM	(GMT --07:00) Pacific Standard Time	UC Davis	D8XSMGH1
Product Number : G2938B		Instrument	Run		3/13/2012 9:22:35 AM	(GMT --07:00) Pacific Standard Time	UC Davis	D8XSMGH1
Name :		Instrument	Run		3/13/2012 9:22:35 AM	(GMT --07:00) Pacific Standard Time	UC Davis	D8XSMGH1
Vendor : Agilent Technologies		Instrument	Run		3/13/2012 9:22:35 AM	(GMT --07:00) Pacific Standard Time	UC Davis	D8XSMGH1
Serial# : DE13701086		Instrument	Run		3/13/2012 9:22:35 AM	(GMT --07:00) Pacific Standard Time	UC Davis	D8XSMGH1
Firmware : C.01.069		Instrument	Run		3/13/2012 9:22:35 AM	(GMT --07:00) Pacific Standard Time	UC Davis	D8XSMGH1
Cartridge : Electrode		Instrument	Run		3/13/2012 9:22:35 AM	(GMT --07:00) Pacific Standard Time	UC Davis	D8XSMGH1