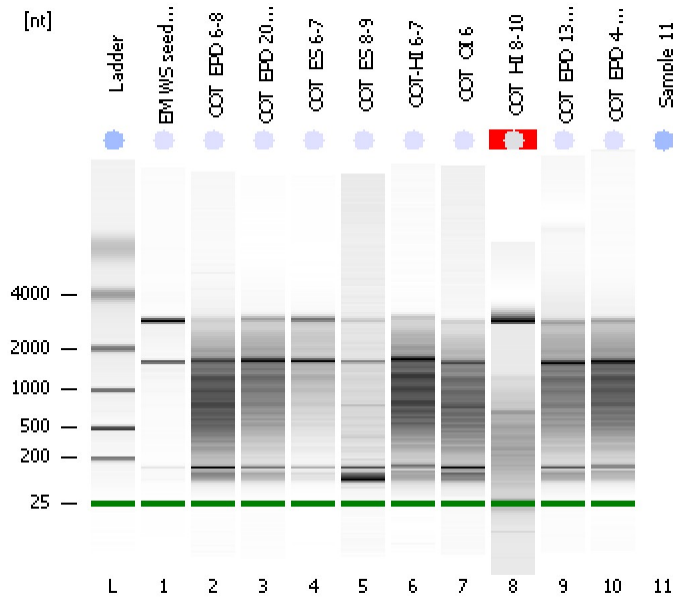


Assay Class: Eukaryote Total RNA Pico
Data Path: C:\...ents and Settings\Bioanalyzer\2012-03-13\2012-03-13_003.xad

Created: 3/13/2012 2:45:01 PM
Modified: 3/13/2012 3:06:30 PM

Electrophoresis File Run Summary



Instrument Information:

Instrument Name: DE13701086 Firmware: C.01.069
Serial#: DE13701086 Type: G2938B

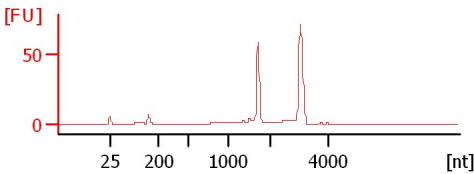
Assay Information:

Assay Origin Path: C:\Program Files\Agilent\2100 bioanalyzer\2100 expert\assays\RNA\Eukaryote Total RNA Pico Series II.xsy
Assay Class: Eukaryote Total RNA Pico
Version: 2.6
Assay Comments: Total RNA Analysis pg sensitivity (Eukaryote)
© Copyright 2003 - 2009 Agilent Technologies, Inc.

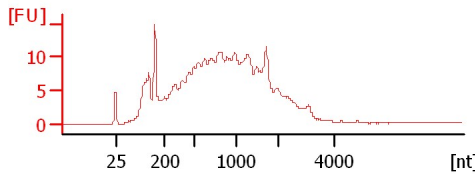
Chip Information:

Chip Lot #:
Reagent Kit Lot #:
Chip Comments:

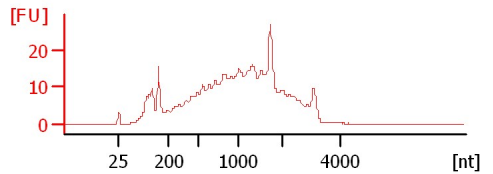
EM WS seed control
RIN: 9.20



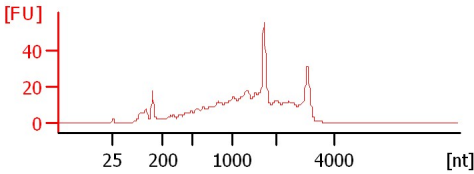
COT_EP D 6-8
RIN: 2.70



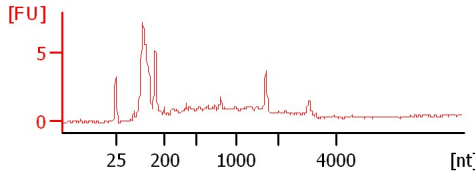
COT_EP D 20-23
RIN: 3.50



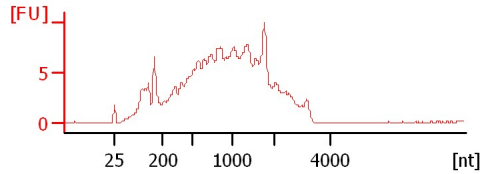
COT_ES 6-7
RIN: 5.40



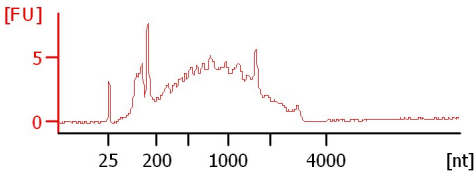
COT_ES 8-9
RIN: 3.50



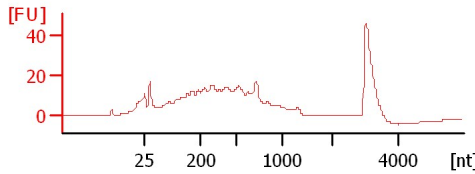
COT-HI 6-7
RIN:3



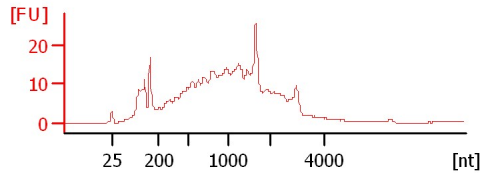
COT_OI 6
RIN: 2.80



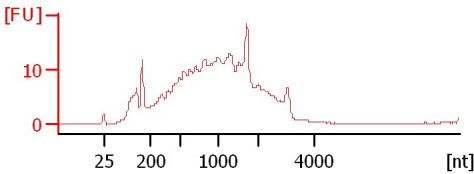
COT_HI 8-10
RIN N/A



COT_EP D 13-19
RIN: 3.40



COT_EP D 4-5,9-12
RIN: 3.20



Assay Class: Eukaryote Total RNA Pico
Data Path: C:\...ents and Settings\Bioanalyzer\2012-03-13\2012-03-13_003.xad

Created: 3/13/2012 2:45:01 PM
Modified: 3/13/2012 3:06:30 PM

Electrophoresis File Run Summary (Chip Summary)

Sample Name	Sample Comment	Status	Result Label	Result Color
EM WS seed control		✓	RIN: 9.20	
COT_EPD 6-8		✓	RIN: 2.70	
COT_EPD 20-23		✓	RIN: 3.50	
COT_ES 6-7		✓	RIN: 5.40	
COT_ES 8-9		✓	RIN: 3.50	
COT-HI 6-7		✓	RIN:3	
COT_OI 6		✓	RIN: 2.80	
COT_HI 8-10		✓	RIN N/A	
COT_EPD 13-19		✓	RIN: 3.40	
COT_EPD 4-5,9-12		✓	RIN: 3.20	
Sample 11				
Ladder		✓	All Other Samples	

Chip Lot #

Reagent Kit Lot #

Chip Comments :

Assay Class: Eukaryote Total RNA Pico
Data Path: C:\...ents and Settings\Bioanalyzer\2012-03-13\2012-03-13_003.xad

Created: 3/13/2012 2:45:01 PM
Modified: 3/13/2012 3:06:30 PM

Electrophoresis Assay Details

General Analysis Settings

Number of Available Sample and Ladder Wells (Max.) : 12
Minimum Visible Range [s] : 17
Maximum Visible Range [s] : 70
Start Analysis Time Range [s] : 18
End Analysis Time Range [s] : 69
Ladder Concentration [pg/ μ l] : 1000
Lower Marker Concentration [pg/ μ l] : 0
Upper Marker Concentration [pg/ μ l] : 0
Used Lower Marker for Quantitation
Standard Curve Fit is Logarithmic
Show Data Aligned to Lower Marker

Integrator Settings

Integration Start Time [s] : 18
Integration End Time [s] : 69
Slope Threshold : 0.6
Height Threshold [FU] : 0.5
Area Threshold : 0.2
Width Threshold [s] : 0.3
Baseline Plateau [s] : 6

Filter Settings

Filter Width [s] : 0.5
Polynomial Order : 4

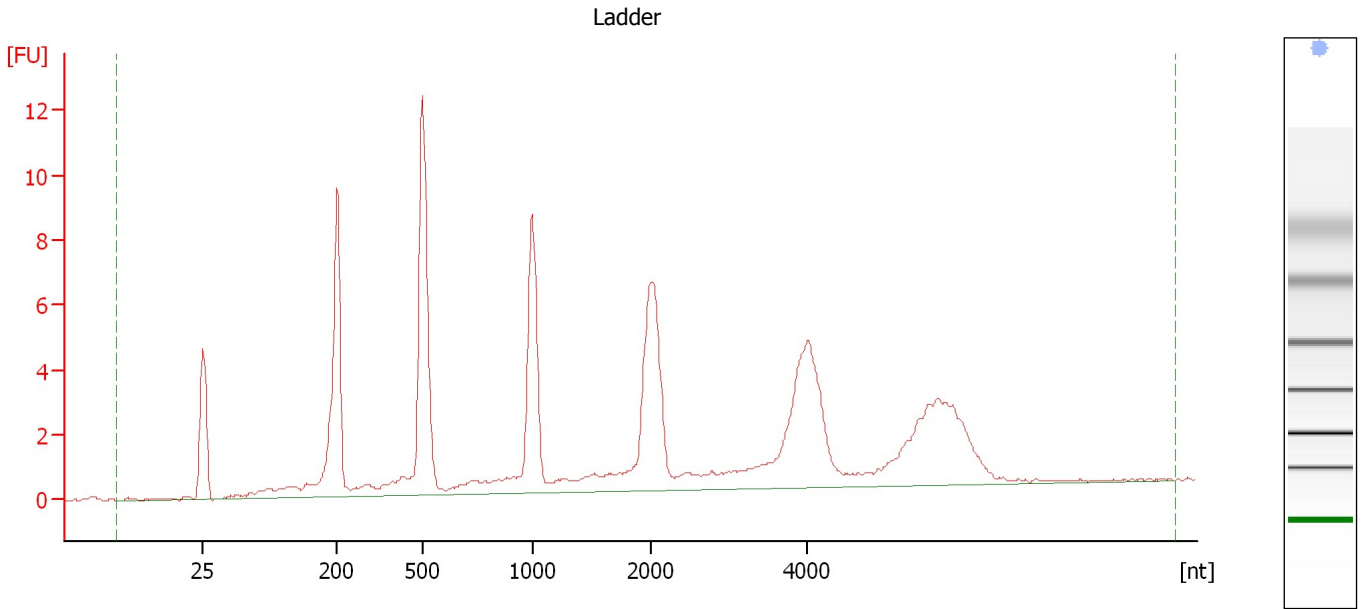
Ladder

Ladder Peak	Size
1	25
2	200
3	500
4	1000
5	2000
6	4000

Assay Class: Eukaryote Total RNA Pico
Data Path: C:\...ents and Settings\Bioanalyzer\2012-03-13\2012-03-13_003.xad

Created: 3/13/2012 2:45:01 PM
Modified: 3/13/2012 3:06:30 PM

Electropherogram Summary



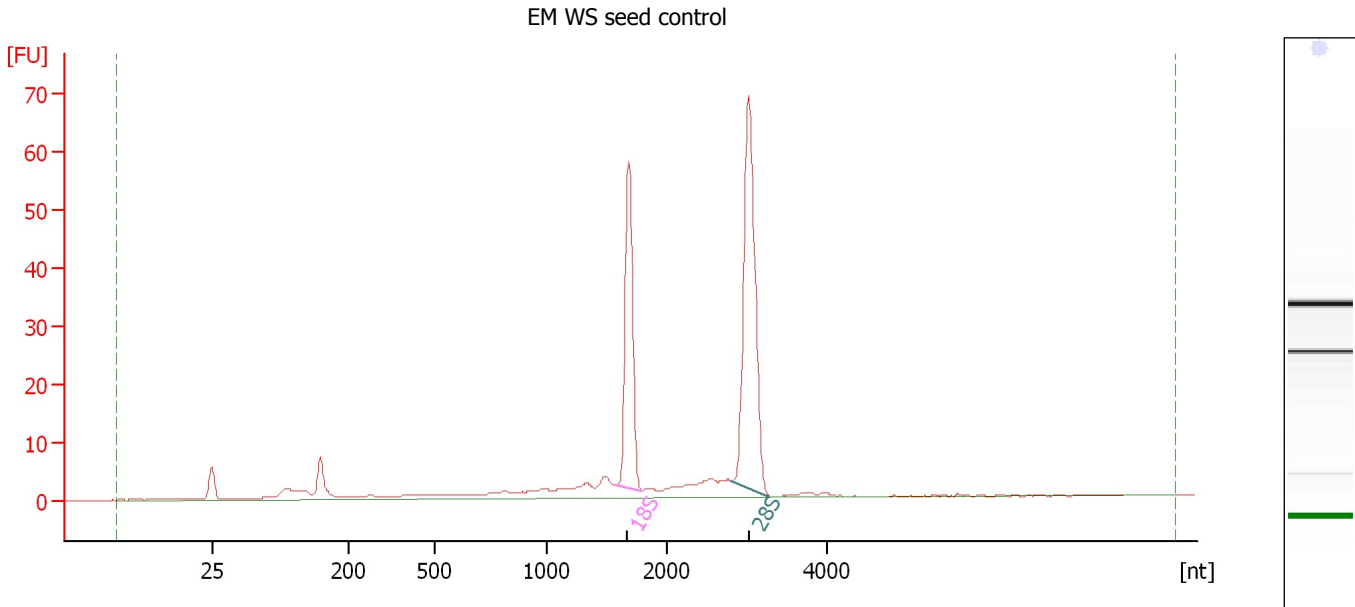
Overall Results for Ladder

RNA Area:	105.7	Result Flagging Color:	
RNA Concentration:	1,000 pg/μl	Result Flagging Label:	All Other Samples

Assay Class: Eukaryote Total RNA Pico
 Data Path: C:\...ents and Settings\Bioanalyzer\2012-03-13\2012-03-13_003.xad

Created: 3/13/2012 2:45:01 PM
 Modified: 3/13/2012 3:06:30 PM

Electropherogram Summary Continued ...



Overall Results for sample 1 : EM WS seed control

RNA Area:	222.4	RNA Integrity Number (RIN):	9.2 (B.02.08)
RNA Concentration:	2,104 pg/μl	Result Flagging Color:	
rRNA Ratio [28s / 18s]:	1.7	Result Flagging Label:	RIN: 9.20

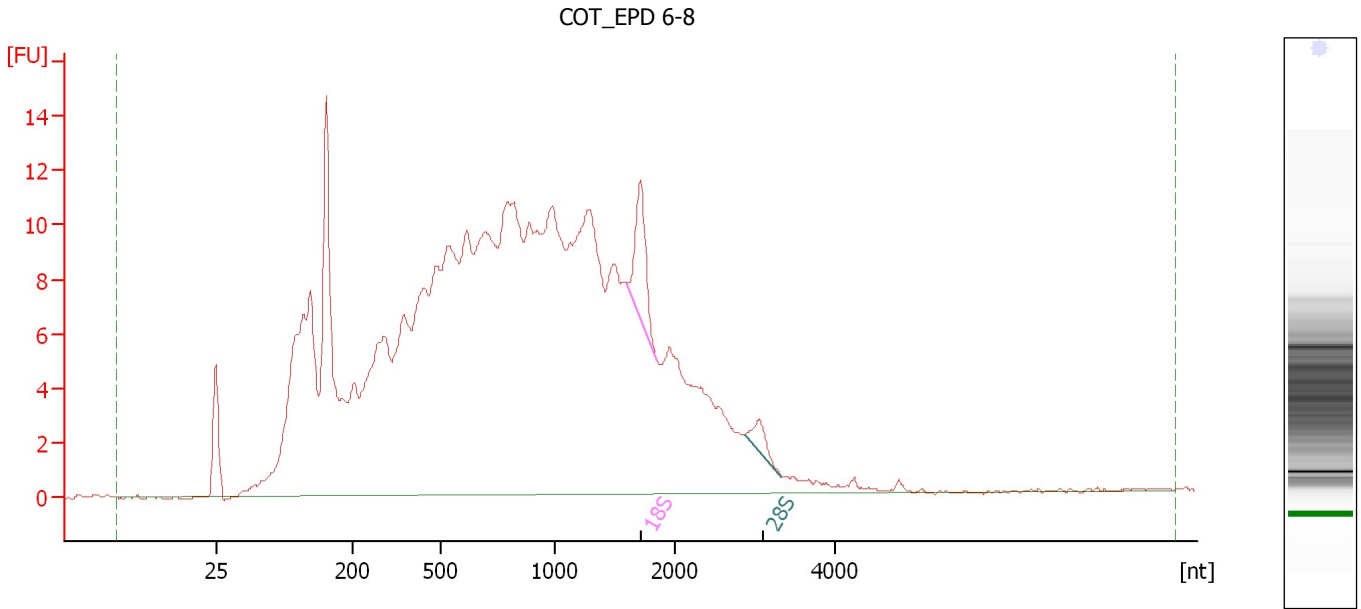
Fragment table for sample 1 : EM WS seed control

Name	Start Size [nt]	End Size [nt]	Area	% of total Area
18S	1,570	1,793	50.4	22.6
28S	2,814	3,296	84.5	38.0

Assay Class: Eukaryote Total RNA Pico
 Data Path: C:\...ents and Settings\Bioanalyzer\2012-03-13\2012-03-13_003.xad

Created: 3/13/2012 2:45:01 PM
 Modified: 3/13/2012 3:06:30 PM

Electropherogram Summary Continued ...



Overall Results for sample 2 : COT EPD 6-8

RNA Area:	419.3	RNA Integrity Number (RIN):	2.7 (B.02.08)
RNA Concentration:	3,969 µg/µl	Result Flagging Color:	
rRNA Ratio [28s / 18s]:	0.3	Result Flagging Label:	RIN: 2.70

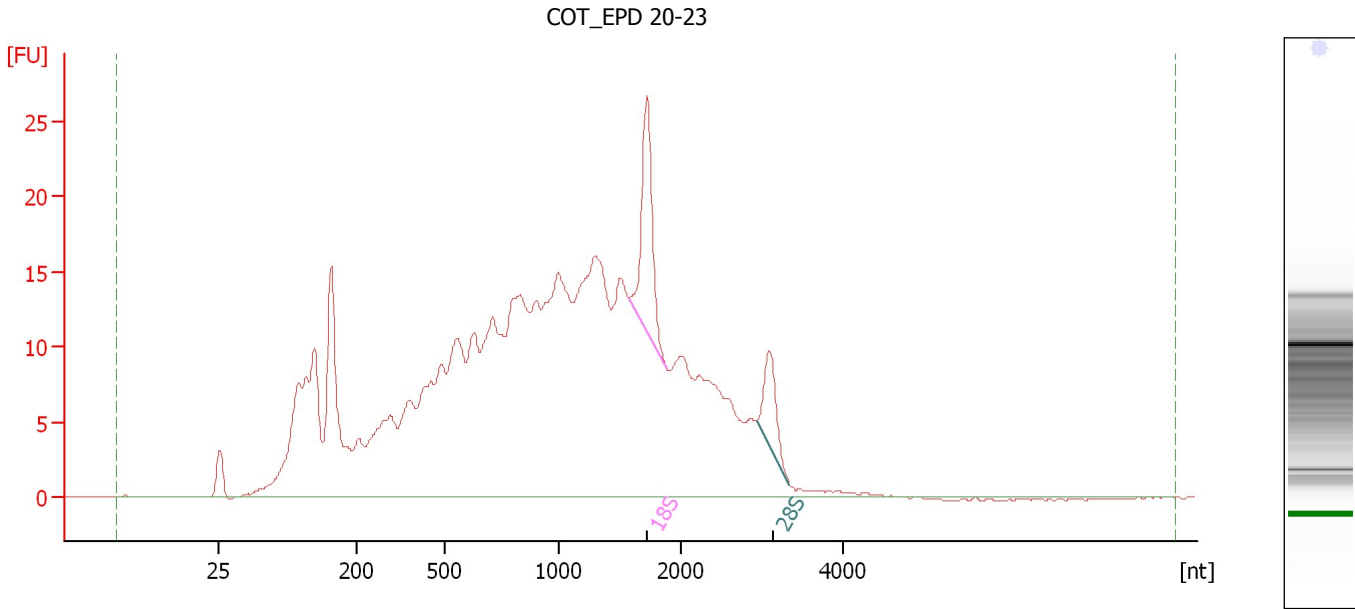
Fragment table for sample 2 : COT EPD 6-8

Name	Start Size [nt]	End Size [nt]	Area	% of total Area
18S	1,613	1,861	6.3	1.5
28S	2,867	3,331	1.7	0.4

Assay Class: Eukaryote Total RNA Pico
Data Path: C:\...ents and Settings\Bioanalyzer\2012-03-13\2012-03-13_003.xad

Created: 3/13/2012 2:45:01 PM
Modified: 3/13/2012 3:06:30 PM

Electropherogram Summary Continued ...



Overall Results for sample 3 : COT EPD 20-23

RNA Area: 571.5 RNA Integrity Number (RIN): 3.5 (B.02.08)
RNA Concentration: 5,409 pg/μl Result Flagging Color:
rRNA Ratio [28s / 18s]: 0.4 Result Flagging Label: RIN: 3.50

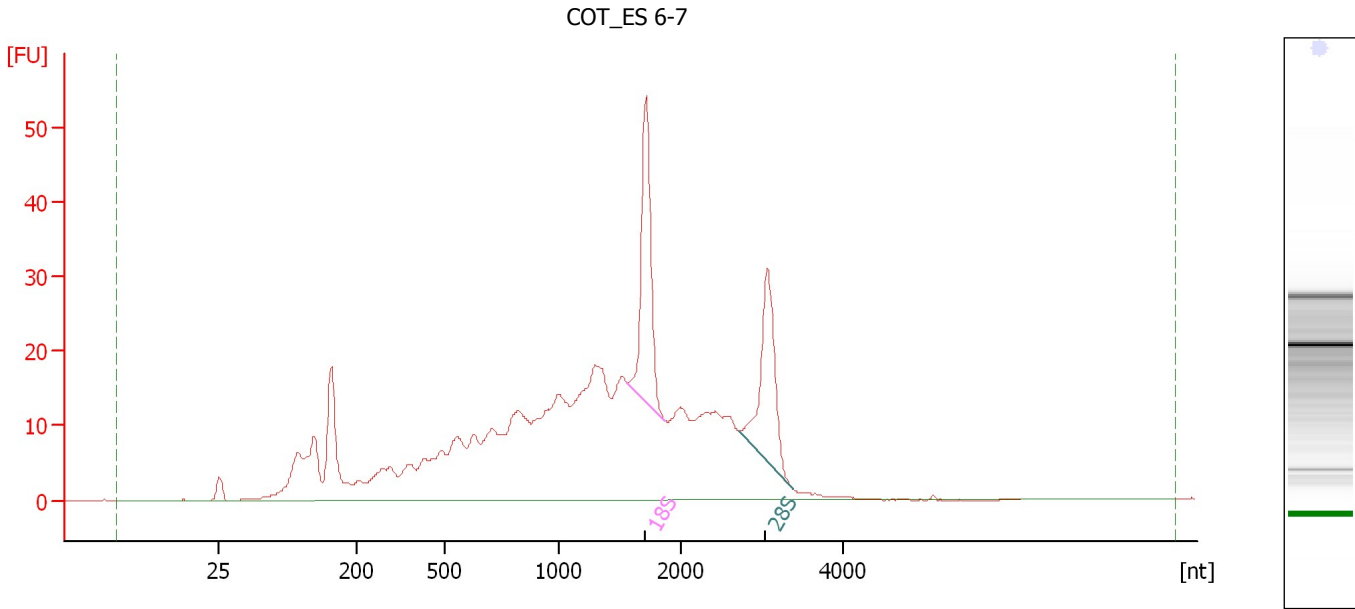
Fragment table for sample 3 : COT EPD 20-23

Name	Start Size [nt]	End Size [nt]	Area	% of total Area
18S	1,574	1,882	19.7	3.4
28S	2,932	3,340	8.3	1.5

Assay Class: Eukaryote Total RNA Pico
Data Path: C:\...ents and Settings\Bioanalyzer\2012-03-13\2012-03-13_003.xad

Created: 3/13/2012 2:45:01 PM
Modified: 3/13/2012 3:06:30 PM

Electropherogram Summary Continued ...



Overall Results for sample 4 : COT_ES 6-7

RNA Area: 617.0 RNA Integrity Number (RIN): 5.4 (B.02.08)
RNA Concentration: 5,839 pg/μl Result Flagging Color:
rRNA Ratio [28s / 18s]: 0.9 Result Flagging Label: RIN: 5.40

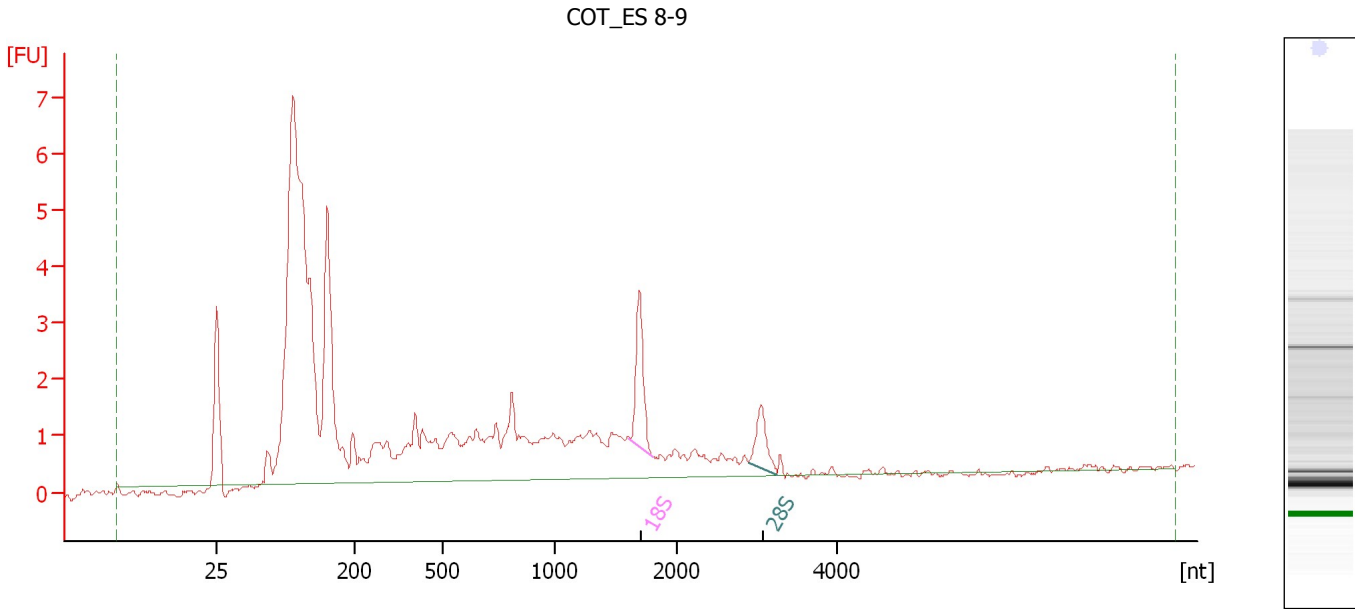
Fragment table for sample 4 : COT_ES 6-7

Name	Start Size [nt]	End Size [nt]	Area	% of total Area
18S	1,565	1,873	45.9	7.4
28S	2,734	3,380	39.1	6.3

Assay Class: Eukaryote Total RNA Pico
Data Path: C:\...ents and Settings\Bioanalyzer\2012-03-13\2012-03-13_003.xad

Created: 3/13/2012 2:45:01 PM
Modified: 3/13/2012 3:06:30 PM

Electropherogram Summary Continued ...



Overall Results for sample 5 : COT_ES 8-9

RNA Area: 69.3 RNA Integrity Number (RIN): 3.5 (B.02.08)
RNA Concentration: 656 µg/µl Result Flagging Color:
rRNA Ratio [28s / 18s]: 0.5 Result Flagging Label: RIN: 3.50

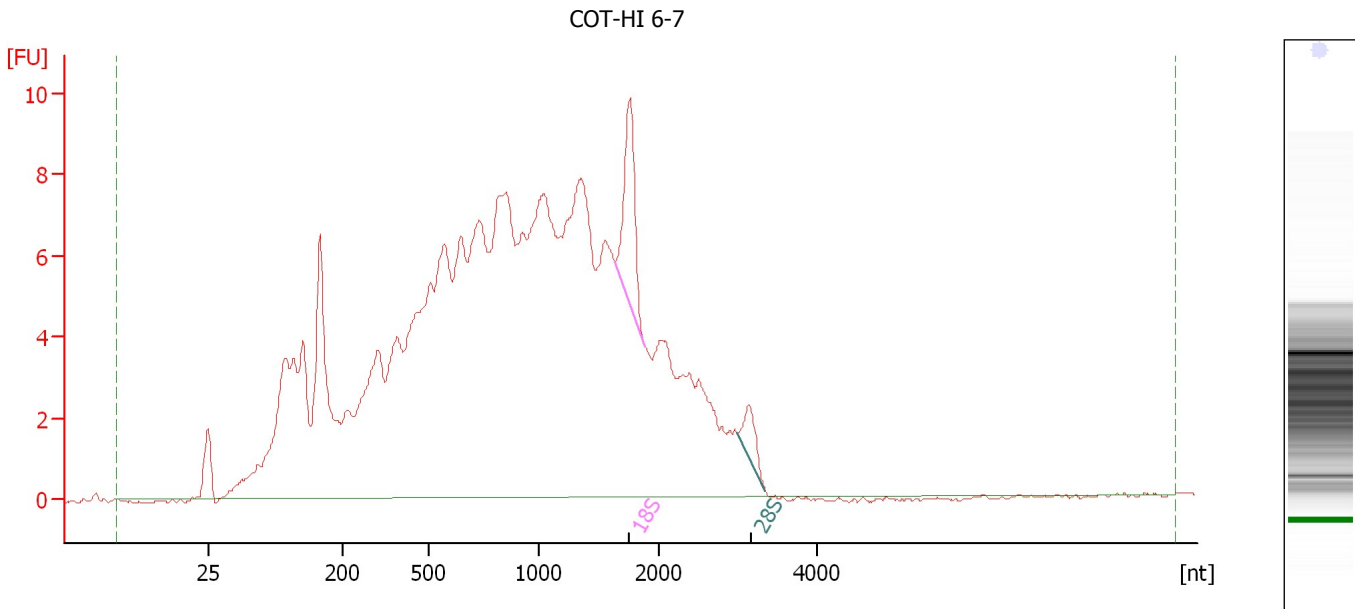
Fragment table for sample 5 : COT_ES 8-9

Name	Start Size [nt]	End Size [nt]	Area	% of total Area
18S	1,614	1,809	2.5	3.6
28S	2,893	3,250	1.3	1.8

Assay Class: Eukaryote Total RNA Pico
 Data Path: C:\...ents and Settings\Bioanalyzer\2012-03-13\2012-03-13_003.xad

Created: 3/13/2012 2:45:01 PM
 Modified: 3/13/2012 3:06:30 PM

Electropherogram Summary Continued ...



Overall Results for sample 6 : COT-HI 6-7

RNA Area:	280.5	RNA Integrity Number (RIN):	3 (B.02.08)
RNA Concentration:	2,654 pg/μl	Result Flagging Color:	
rRNA Ratio [28s / 18s]:	0.2	Result Flagging Label:	RIN:3

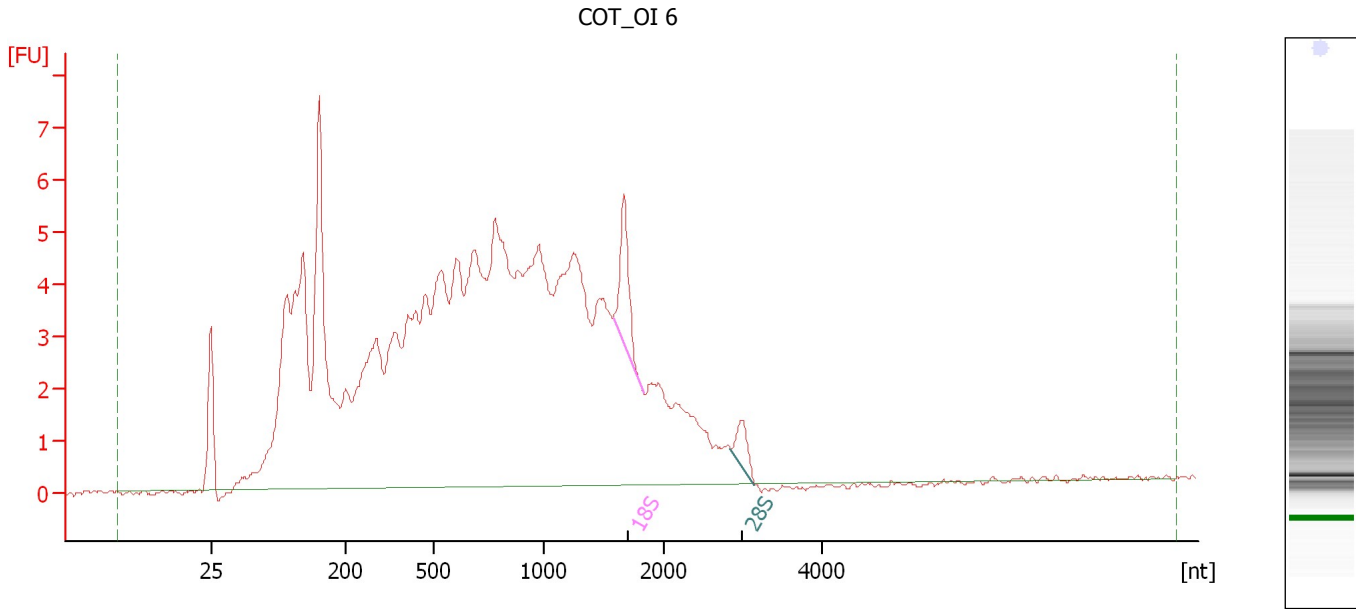
Fragment table for sample 6 : COT-HI 6-7

Name	Start Size [nt]	End Size [nt]	Area	% of total Area
18S	1,634	1,886	6.4	2.3
28S	3,004	3,355	1.6	0.6

Assay Class: Eukaryote Total RNA Pico
Data Path: C:\...ents and Settings\Bioanalyzer\2012-03-13\2012-03-13_003.xad

Created: 3/13/2012 2:45:01 PM
Modified: 3/13/2012 3:06:30 PM

Electropherogram Summary Continued ...



Overall Results for sample 7 : COT_OI 6

RNA Area: 187.1 RNA Integrity Number (RIN): 2.8 (B.02.08)
RNA Concentration: 1,771 pg/μl Result Flagging Color:
rRNA Ratio [28s / 18s]: 0.3 Result Flagging Label: RIN: 2.80

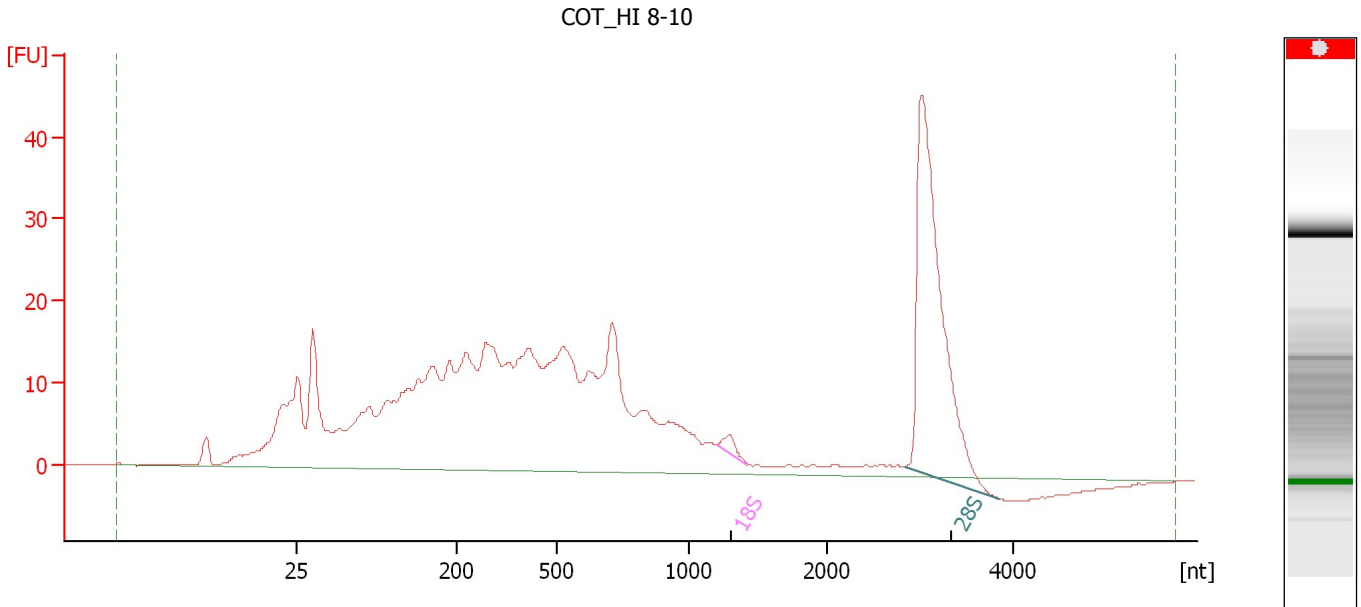
Fragment table for sample 7 : COT_OI 6

Name	Start Size [nt]	End Size [nt]	Area	% of total Area
18S	1,584	1,835	3.0	1.6
28S	2,841	3,150	1.0	0.6

Assay Class: Eukaryote Total RNA Pico
 Data Path: C:\...ents and Settings\Bioanalyzer\2012-03-13\2012-03-13_003.xad

Created: 3/13/2012 2:45:01 PM
 Modified: 3/13/2012 3:06:30 PM

Electropherogram Summary Continued ...



Overall Results for sample 8 : COT_HI 8-10

RNA Area:	648.0	RNA Integrity Number (RIN):	N/A (B.02.08)
RNA Concentration:	6,132 pg/μl	Result Flagging Color:	
rRNA Ratio [28s / 18s]:	35.8	Result Flagging Label:	RIN N/A

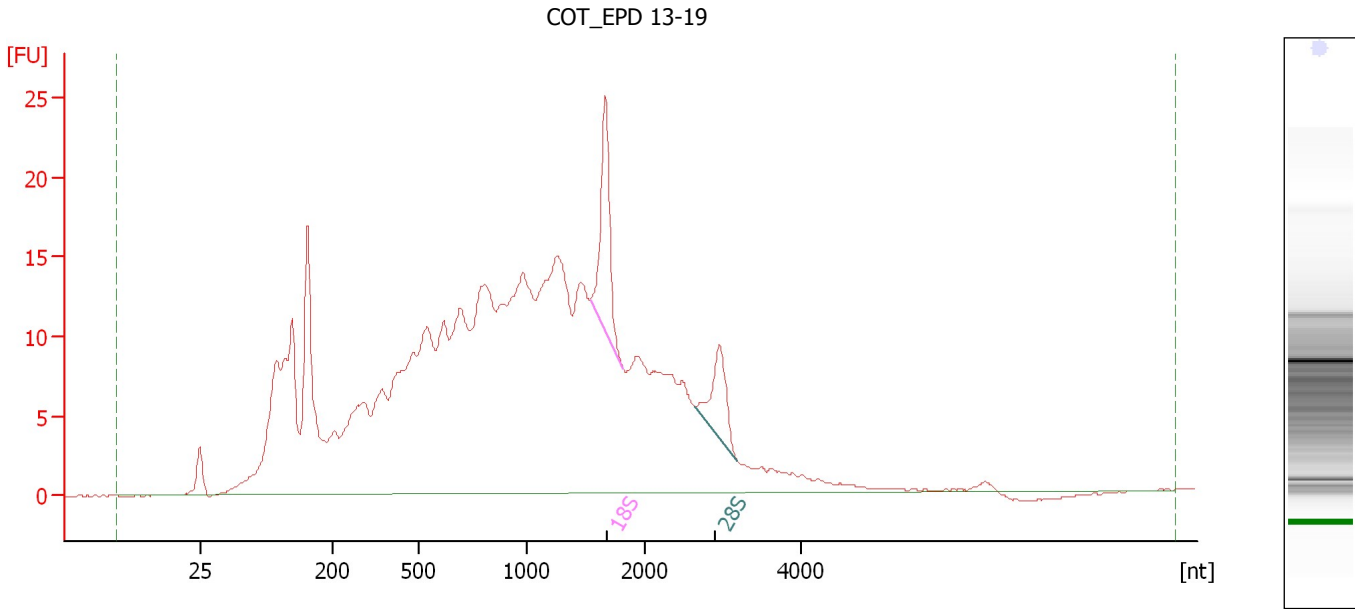
Fragment table for sample 8 : COT_HI 8-10

Name	Start Size [nt]	End Size [nt]	Area	% of total Area
18S	1,210	1,424	2.9	0.4
28S	2,835	3,833	103.7	16.0

Assay Class: Eukaryote Total RNA Pico
Data Path: C:\...ents and Settings\Bioanalyzer\2012-03-13\2012-03-13_003.xad

Created: 3/13/2012 2:45:01 PM
Modified: 3/13/2012 3:06:30 PM

Electropherogram Summary Continued ...



Overall Results for sample 9 : COT EPD 13-19

RNA Area: 565.3 RNA Integrity Number (RIN): 3.4 (B.02.08)
RNA Concentration: 5,350 pg/μl Result Flagging Color:
rRNA Ratio [28s / 18s]: 0.5 Result Flagging Label: RIN: 3.40

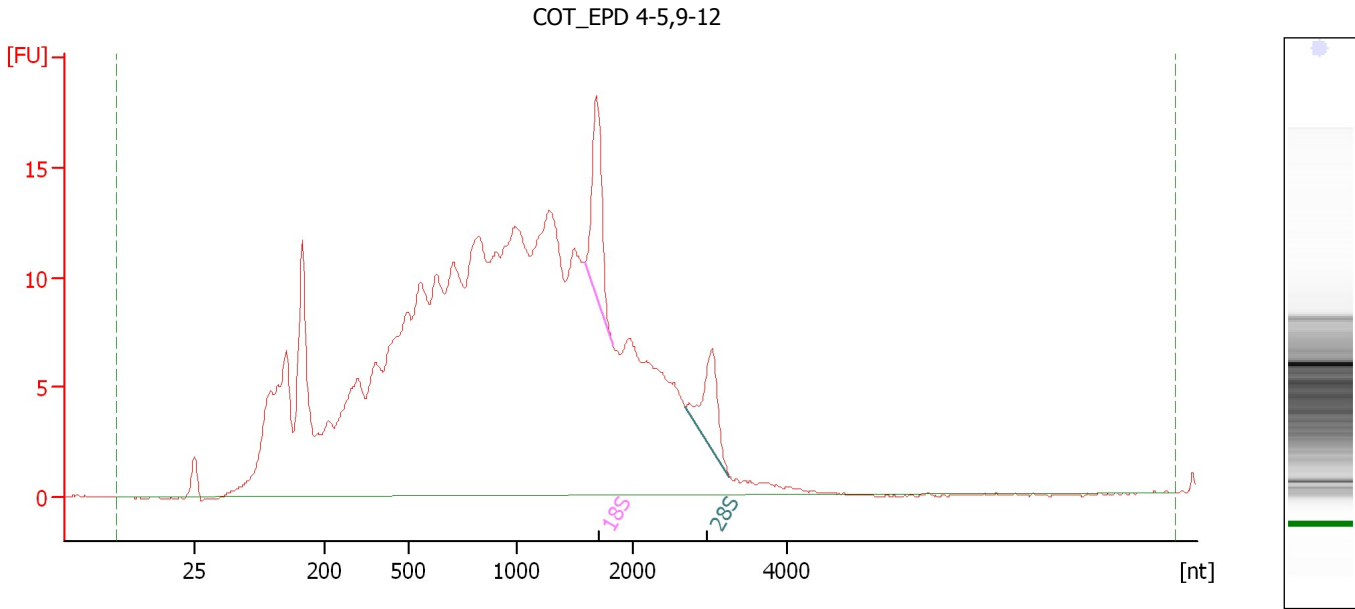
Fragment table for sample 9 : COT EPD 13-19

Name	Start Size [nt]	End Size [nt]	Area	% of total Area
18S	1,539	1,823	17.2	3.1
28S	2,652	3,200	9.3	1.7

Assay Class: Eukaryote Total RNA Pico
 Data Path: C:\...ents and Settings\Bioanalyzer\2012-03-13\2012-03-13_003.xad

Created: 3/13/2012 2:45:01 PM
 Modified: 3/13/2012 3:06:30 PM

Electropherogram Summary Continued ...



Overall Results for sample 10 : COT EPD 4-5,9-12

RNA Area:	463.7	RNA Integrity Number (RIN):	3.2 (B.02.08)
RNA Concentration:	4,389 pg/μl	Result Flagging Color:	
rRNA Ratio [28s / 18s]:	0.6	Result Flagging Label:	RIN: 3.20

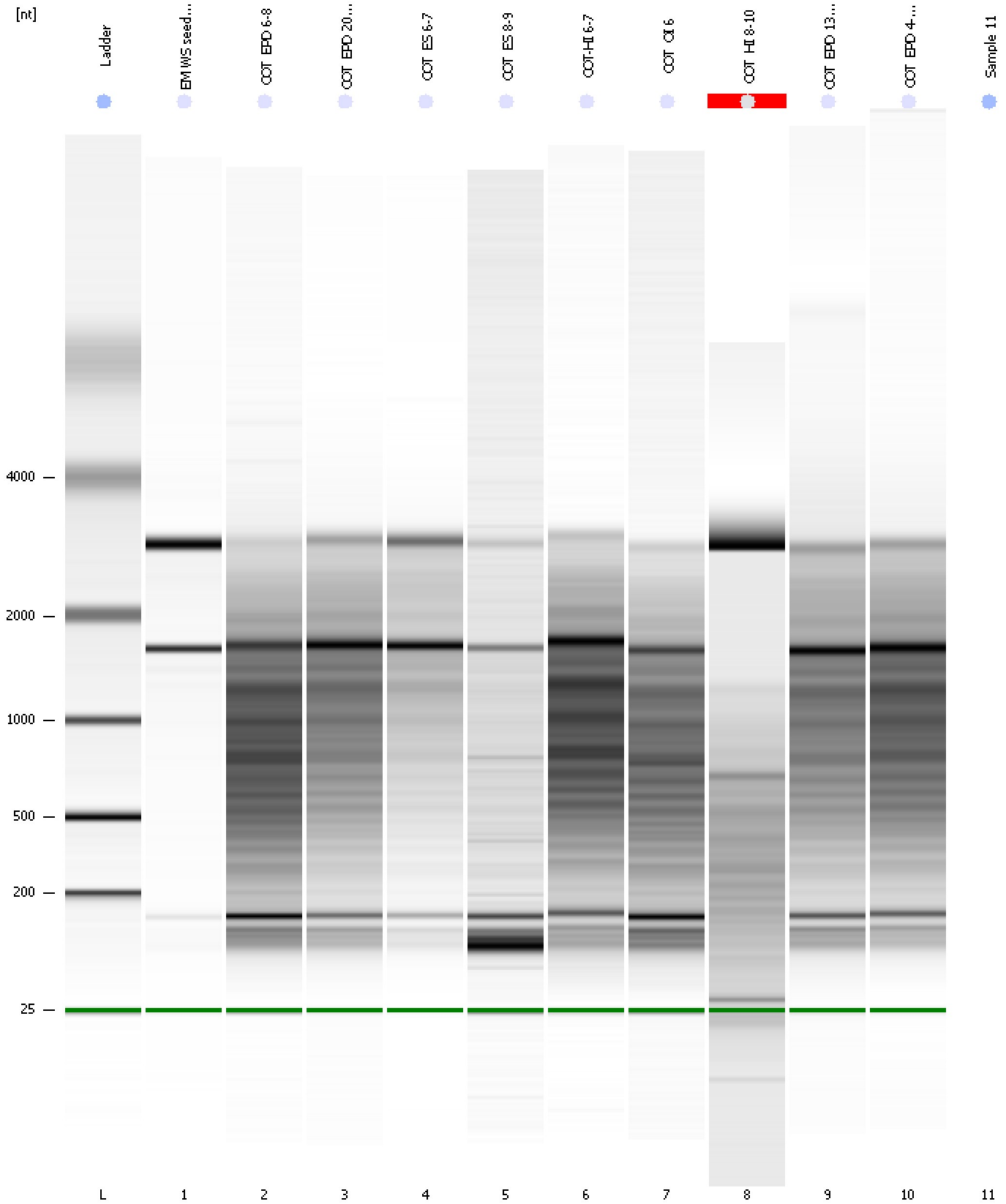
Fragment table for sample 10 : COT EPD 4-5,9-12

Name	Start Size [nt]	End Size [nt]	Area	% of total Area
18S	1,582	1,833	11.4	2.5
28S	2,693	3,262	7.3	1.6

Assay Class: Eukaryote Total RNA Pico
Data Path: C:\...ents and Settings\Bioanalyzer\2012-03-13\2012-03-13_003.xad

Created: 3/13/2012 2:45:01 PM
Modified: 3/13/2012 3:06:30 PM

Gel Image



Assay Class: Eukaryote Total RNA Pico
Data Path: C:\...ents and Settings\Bioanalyzer\2012-03-13\2012-03-13_003.xad

Created: 3/13/2012 2:45:01 PM
Modified: 3/13/2012 3:06:30 PM

Invalid Samples

Sample 11 has not been run, no results available.

Assay Class: Eukaryote Total RNA Pico
 Data Path: C:\...ents and Settings\Bioanalyzer\2012-03-13\2012-03-13_003.xad

Created: 3/13/2012 2:45:01 PM
 Modified: 3/13/2012 3:06:30 PM

Run Logbook

Description	Number	Source	Category	Sub Category	Time	Time Zone	User	Host
Run ended on port 1 (Number of wells acquired: 11)		Instrument	Run		3/13/2012 3:06:28 PM	(GMT --07:00) Pacific Standard Time	UC Davis	D8XSMGH1
Run started on port 1 (File: C:\Documents and Settings\Bioanalyzer\2012-03-13\2012-03-13_003.xad)		Instrument	Run		3/13/2012 2:45:07 PM	(GMT --07:00) Pacific Standard Time	UC Davis	D8XSMGH1
Product Number : G2938B		Instrument	Run		3/13/2012 2:45:07 PM	(GMT --07:00) Pacific Standard Time	UC Davis	D8XSMGH1
Name :		Instrument	Run		3/13/2012 2:45:07 PM	(GMT --07:00) Pacific Standard Time	UC Davis	D8XSMGH1
Vendor : Agilent Technologies		Instrument	Run		3/13/2012 2:45:07 PM	(GMT --07:00) Pacific Standard Time	UC Davis	D8XSMGH1
Serial# : DE13701086		Instrument	Run		3/13/2012 2:45:07 PM	(GMT --07:00) Pacific Standard Time	UC Davis	D8XSMGH1
Firmware : C.01.069		Instrument	Run		3/13/2012 2:45:07 PM	(GMT --07:00) Pacific Standard Time	UC Davis	D8XSMGH1
Cartridge : Electrode		Instrument	Run		3/13/2012 2:45:07 PM	(GMT --07:00) Pacific Standard Time	UC Davis	D8XSMGH1