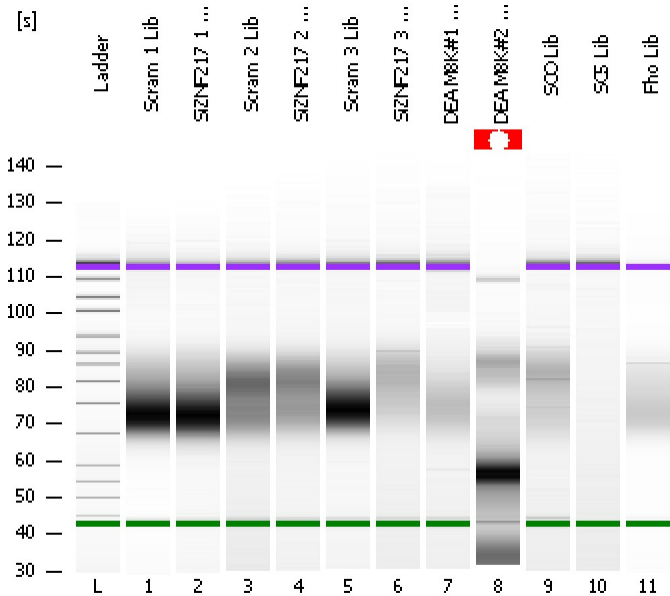


Assay Class: High Sensitivity DNA Assay
Data Path: C:\...ents and Settings\Bioanalyzer\2012-03-13\2012-03-13_004.xad

Created: 3/13/2012 3:29:38 PM
Modified: 3/13/2012 4:21:11 PM

Electrophoresis File Run Summary



Instrument Information:

Instrument Name: DE13701086 Firmware: C.01.069
Serial#: DE13701086 Type: G2938B

Assay Information:

Assay Origin Path: C:\Program Files\Agilent\2100 bioanalyzer\2100 expert\assays\dsDNA\High Sensitivity DNA.xsy
Assay Class: High Sensitivity DNA Assay
Version: 1.03
Assay Comments: Copyright © 2003-2010 Agilent Technologies

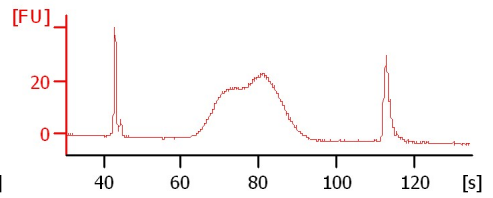
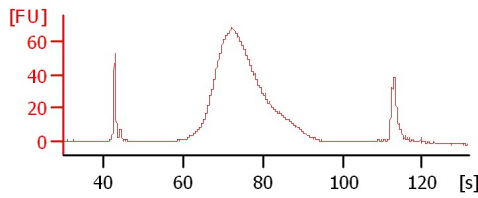
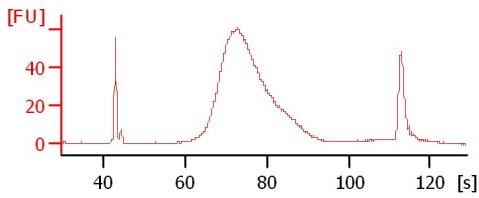
Chip Information:

Chip Lot #:
Reagent Kit Lot #:
Chip Comments:

Scram 1 Lib

SiZNF217 1 Lib

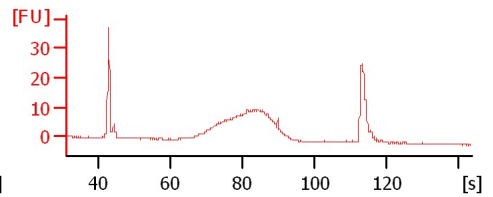
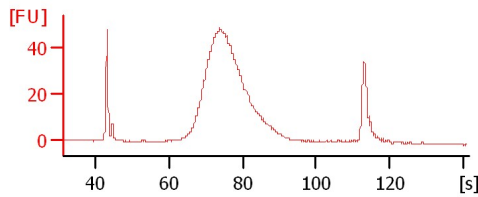
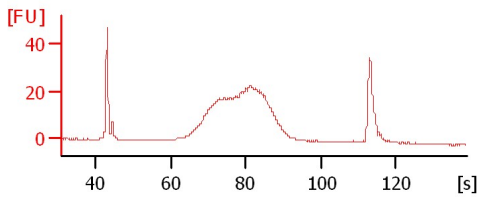
Scram 2 Lib



SiZNF217 2 Lib

Scram 3 Lib

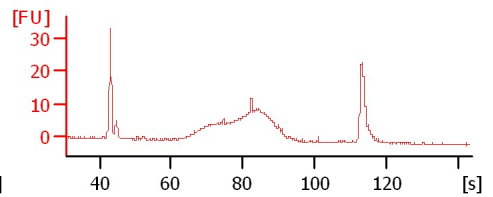
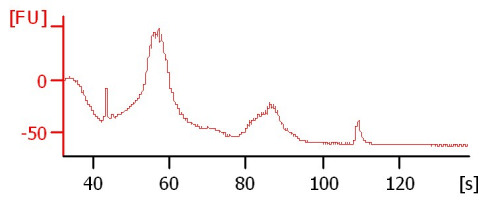
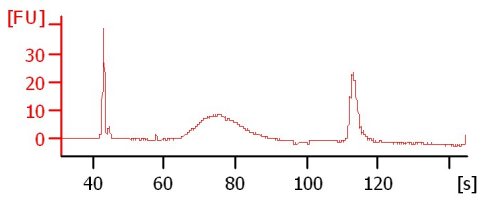
SiZNF217 3 Lib



DEA M8K#1 Lib

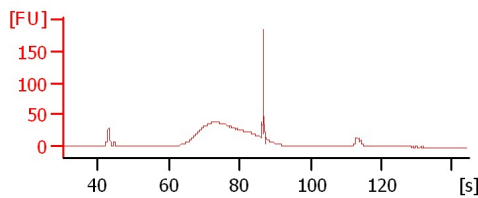
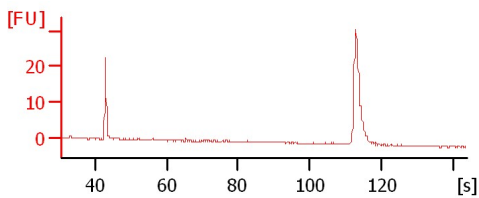
DEA M8K#2 Lib

SCO Lib



SCS Lib

Fho Lib



Assay Class: High Sensitivity DNA Assay
 Data Path: C:\...ents and Settings\Bioanalyzer\2012-03-13\2012-03-13_004.xad

Created: 3/13/2012 3:29:38 PM
 Modified: 3/13/2012 4:21:11 PM

Electrophoresis File Run Summary (Chip Summary)

Sample Name	Sample Comment	Rest. Digest	Status	Observation	Result Label	Result Color
Scram 1 Lib		<input type="checkbox"/>	✓			
SiZNF217 1 Lib		<input type="checkbox"/>	✓			
Scram 2 Lib		<input type="checkbox"/>	✓			
SiZNF217 2 Lib		<input type="checkbox"/>	✓			
Scram 3 Lib		<input type="checkbox"/>	✓			
SiZNF217 3 Lib		<input type="checkbox"/>	✓			
DEA M8K#1 Lib		<input type="checkbox"/>	✓			
DEA M8K#2 Lib		<input type="checkbox"/>	✓			
SCO Lib		<input type="checkbox"/>	✓			
SC5 Lib		<input type="checkbox"/>	✓			
Fho Lib		<input type="checkbox"/>	✓			
Ladder		<input type="checkbox"/>	✓			

Chip Lot #

Reagent Kit Lot #

Chip Comments :

Assay Class: High Sensitivity DNA Assay
Data Path: C:\...ents and Settings\Bioanalyzer\2012-03-13\2012-03-13_004.xad

Created: 3/13/2012 3:29:38 PM
Modified: 3/13/2012 4:21:11 PM

Electrophoresis Assay Details

General Analysis Settings

Number of Available Sample and Ladder Wells (Max.) : 12
Minimum Visible Range [s] : 32
Maximum Visible Range [s] : 138
Start Analysis Time Range [s] : 33
End Analysis Time Range [s] : 137.5
Ladder Concentration [pg/μl] : 1950
Uses Standard Area for Ladder Fragments
Lower Marker Concentration [pg/μl] : 125
Upper Marker Concentration [pg/μl] : 75
Used Upper Marker for Quantitation
Standard Curve Fit is Point to Point
Show Data Aligned to Lower and Upper Marker

Integrator Settings

Integration Start Time [s] : 33.05
Integration End Time [s] : 137
Slope Threshold : 0.8
Height Threshold [FU] : 5
Area Threshold : 0.1
Width Threshold [s] : 0.6
Baseline Plateau [s] : 0.5

Filter Settings

Filter Width [s] : 0.5
Polynomial Order : 4

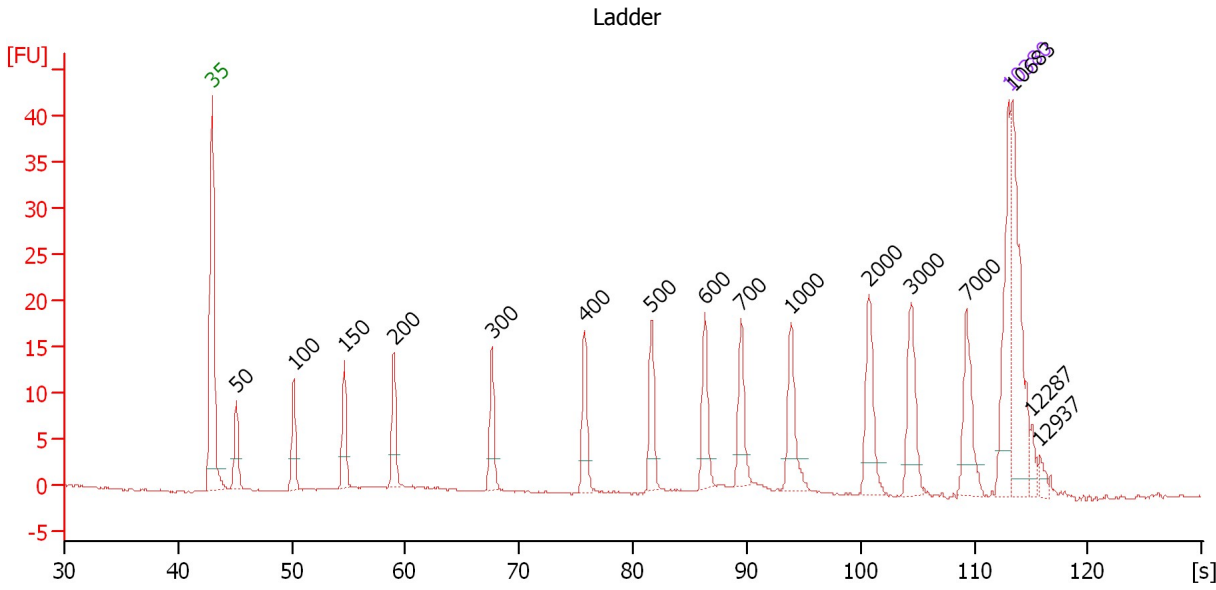
Ladder

Ladder Peak	Size	Area
1	35	160
2	50	210
3	100	208
4	150	221
5	200	242
6	300	270
7	400	305
8	500	306
9	600	336
10	700	321
11	1000	366
12	2000	413
13	3000	411
14	7000	400
15	10380	214

Assay Class: High Sensitivity DNA Assay
 Data Path: C:\...ents and Settings\Bioanalyzer\2012-03-13\2012-03-13_004.xad

Created: 3/13/2012 3:29:38 PM
 Modified: 3/13/2012 4:21:11 PM

Electropherogram Summary



Overall Results for Ladder

Noise: 0.1

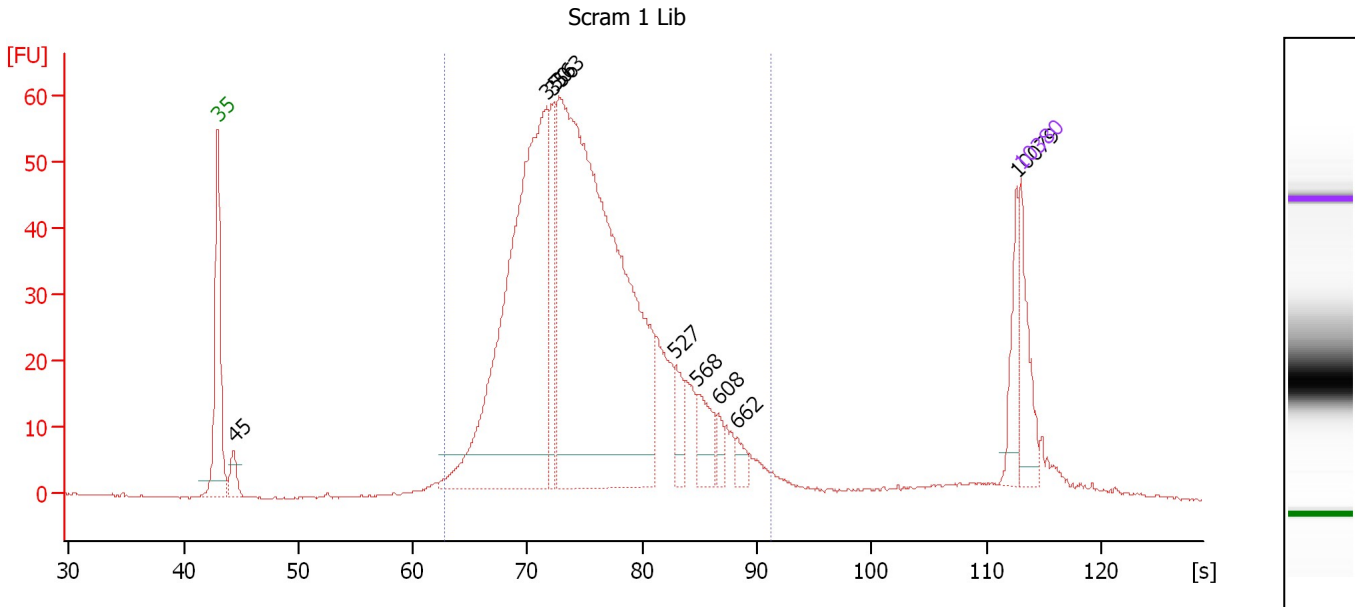
Peak table for Ladder

Peak	Size [bp]	Conc. [pg/μl]	Molarity [pmol/l]	Observations
1	35	125.00	5,411.3	Lower Marker
2	50	150.00	4,545.5	Ladder Peak
3	100	150.00	2,272.7	Ladder Peak
4	150	150.00	1,515.2	Ladder Peak
5	200	150.00	1,136.4	Ladder Peak
6	300	150.00	757.6	Ladder Peak
7	400	150.00	568.2	Ladder Peak
8	500	150.00	454.5	Ladder Peak
9	600	150.00	378.8	Ladder Peak
10	700	150.00	324.7	Ladder Peak
11	1,000	150.00	227.3	Ladder Peak
12	2,000	150.00	113.6	Ladder Peak
13	3,000	150.00	75.8	Ladder Peak
14	7,000	150.00	32.5	Ladder Peak
15	10,380	75.00	10.9	Upper Marker
16	10,683	0.00	0.0	
17	12,287	0.00	0.0	
18	12,937	0.00	0.0	

Assay Class: High Sensitivity DNA Assay
 Data Path: C:\...ents and Settings\Bioanalyzer\2012-03-13\2012-03-13_004.xad

Created: 3/13/2012 3:29:38 PM
 Modified: 3/13/2012 4:21:11 PM

Electropherogram Summary Continued ...



Overall Results for sample 1 : Scram 1 Lib

Number of peaks found: 9 Corr. Area 1: 1,037.2
 Noise: 0.1

Peak table for sample 1 : Scram 1 Lib

Peak	Size [bp]	Conc. [pg/μl]	Molarity [pmol/l]	Observations
1	35	125.00	5,411.3	Lower Marker
2	45	43.19	1,467.4	
3	350	947.02	4,102.4	
4	356	139.92	595.4	
5	363	1,403.43	5,858.7	
6	527	46.62	134.0	
7	568	62.04	165.5	
8	608	17.85	44.5	
9	662	20.54	47.0	
10	10,079	55.37	8.3	
11	10,380	75.00	10.9	Upper Marker

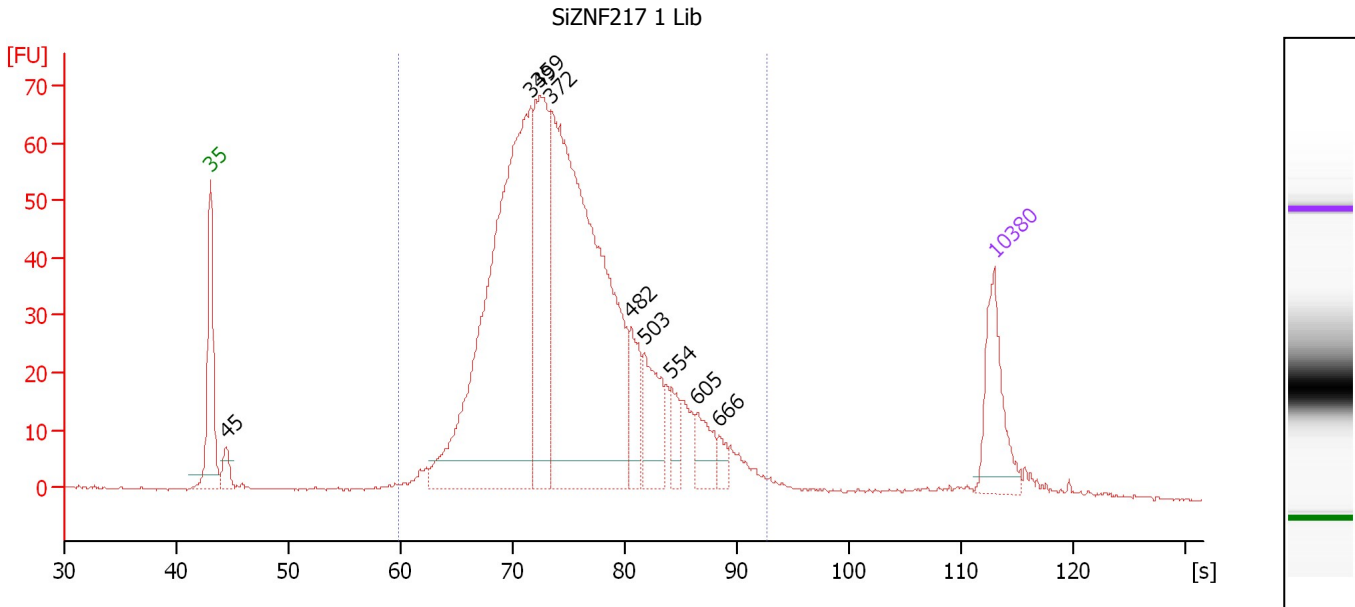
Region table for sample 1 : Scram 1 Lib

From [bp]	Molarity [pmol/l]	Average Size [bp]	Conc. [pg/μl]	To [bp]	Corr. Area	% of Total	Size distribution in CV [%]	Color
244	11,649.2	407	2,937.61	815	1,037.2	92	23.2	Blue

Assay Class: High Sensitivity DNA Assay
 Data Path: C:\...ents and Settings\Bioanalyzer\2012-03-13\2012-03-13_004.xad

Created: 3/13/2012 3:29:38 PM
 Modified: 3/13/2012 4:21:11 PM

Electropherogram Summary Continued ...



Overall Results for sample 2 : SiZNF217 1 Lib

Number of peaks found: 9 Corr. Area 1: 1,226.7
 Noise: 0.2

Peak table for sample 2 : SiZNF217 1 Lib

Peak	Size [bp]	Conc. [pg/μl]	Molarity [pmol/l]	Observations
1	35	125.00	5,411.3	Lower Marker
2	45	30.28	1,023.8	
3	349	774.60	3,365.0	
4	359	255.78	1,080.2	
5	372	809.55	3,300.1	
6	482	62.21	195.7	
7	503	89.09	268.5	
8	554	29.99	82.1	
9	605	39.91	100.0	
10	666	16.29	37.1	
11	10,380	75.00	10.9	Upper Marker

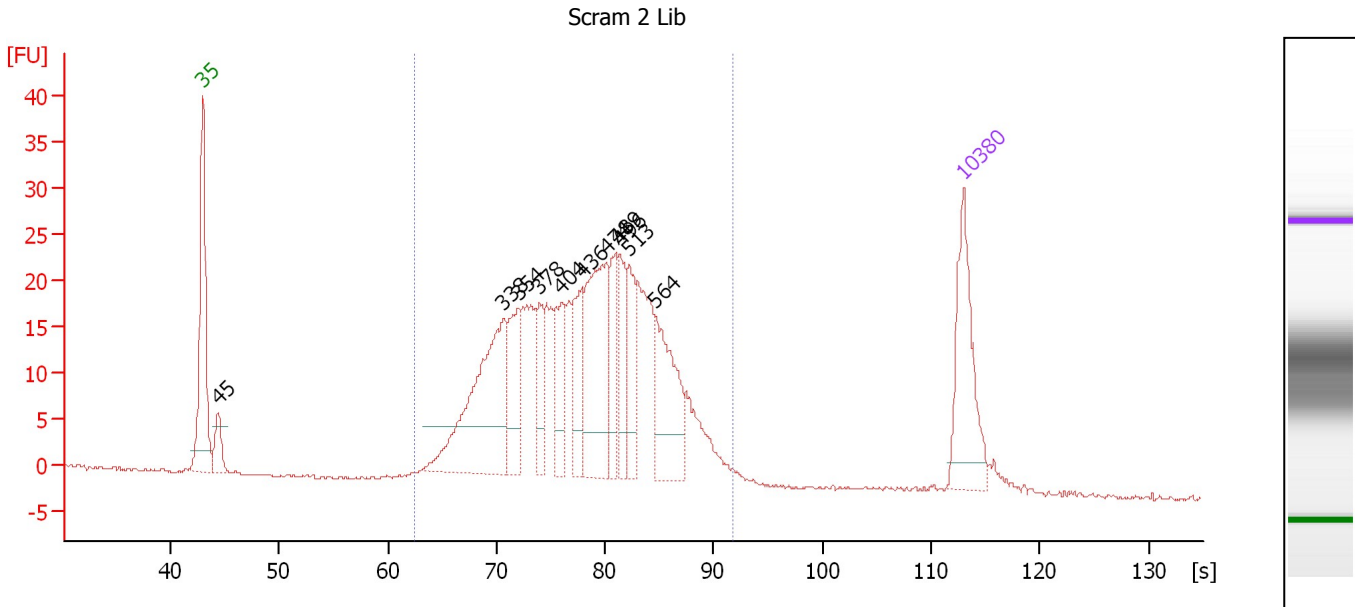
Region table for sample 2 : SiZNF217 1 Lib

From [bp]	Molarity [pmol/l]	Average Size [bp]	Conc. [pg/μl]	To [bp]	Corr. Area	% of Total	Size distribution in CV [%]	Color
209	9,150.3	405	2,270.50	919	1,226.7	95	25.7	Blue

Assay Class: High Sensitivity DNA Assay
 Data Path: C:\...ents and Settings\Bioanalyzer\2012-03-13\2012-03-13_004.xad

Created: 3/13/2012 3:29:38 PM
 Modified: 3/13/2012 4:21:11 PM

Electropherogram Summary Continued ...



Overall Results for sample 3 : Scram 2 Lib

Number of peaks found: 11 Corr. Area 1: 515.9
 Noise: 0.2

Peak table for sample 3 : Scram 2 Lib

Peak	Size [bp]	Conc. [pg/μl]	Molarity [pmol/l]	Observations
1	35	125.00	5,411.3	Lower Marker
2	45	32.34	1,094.5	
3	338	195.58	877.7	
4	354	62.62	268.0	
5	378	35.63	142.8	
6	404	49.71	186.4	
7	436	57.25	198.9	
8	474	139.85	446.9	
9	489	47.57	147.3	
10	496	49.81	152.1	
11	513	45.97	135.8	
12	564	89.43	240.1	
13	10,380	75.00	10.9	Upper Marker

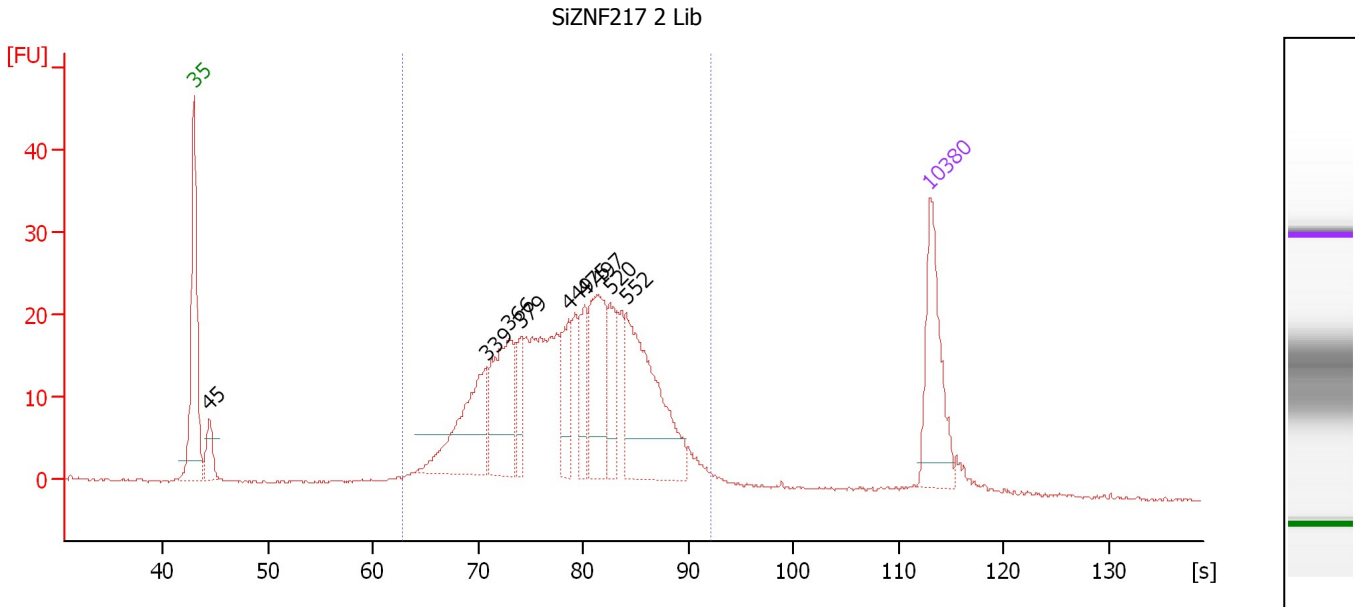
Region table for sample 3 : Scram 2 Lib

From [bp]	Molarity [pmol/l]	Average Size [bp]	Conc. [pg/μl]	To [bp]	Corr. Area	% of Total	Size distribution in CV [%]	Color
240	4,215.2	452	1,162.01	860	515.9	96	23.6	Blue

Assay Class: High Sensitivity DNA Assay
 Data Path: C:\...ents and Settings\Bioanalyzer\2012-03-13\2012-03-13_004.xad

Created: 3/13/2012 3:29:38 PM
 Modified: 3/13/2012 4:21:11 PM

Electropherogram Summary Continued ...



Overall Results for sample 4 : SiZNF217 2 Lib

Number of peaks found: 9 Corr. Area 1: 486.1
 Noise: 0.1

Peak table for sample 4 : SiZNF217 2 Lib

Peak	Size [bp]	Conc. [pg/μl]	Molarity [pmol/l]	Observations
1	35	125.00	5,411.3	Lower Marker
2	45	36.87	1,238.6	
3	339	123.20	551.3	
4	366	110.91	459.8	
5	379	34.51	137.8	
6	449	47.44	160.2	
7	475	45.85	146.3	
8	497	102.09	311.4	
9	520	47.40	138.1	
10	552	167.43	459.3	
11	10,380	75.00	10.9	Upper Marker

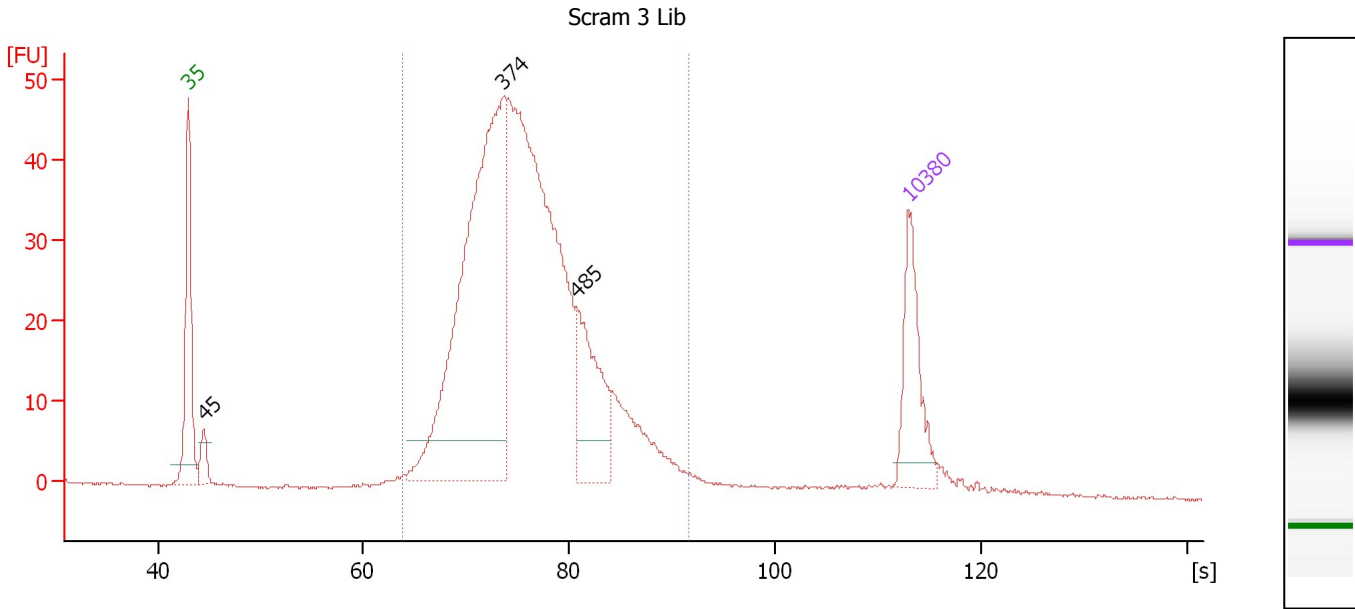
Region table for sample 4 : SiZNF217 2 Lib

From [bp]	Molarity [pmol/l]	Average Size [bp]	Conc. [pg/μl]	To [bp]	Corr. Area	% of Total	Size distribution in CV [%]	Color
245	3,726.6	464	1,052.14	886	486.1	92	24.1	Blue

Assay Class: High Sensitivity DNA Assay
 Data Path: C:\...ents and Settings\Bioanalyzer\2012-03-13\2012-03-13_004.xad

Created: 3/13/2012 3:29:38 PM
 Modified: 3/13/2012 4:21:11 PM

Electropherogram Summary Continued ...



Overall Results for sample 5 : Scram 3 Lib

Number of peaks found: 3 Corr. Area 1: 759.0
 Noise: 0.1

Peak table for sample 5 : Scram 3 Lib

Peak	Size [bp]	Conc. [pg/μl]	Molarity [pmol/l]	Observations
1	35	125.00	5,411.3	Lower Marker
2	45	30.12	1,007.1	
3	374	605.35	2,451.9	
4	485	129.19	403.5	
5	10,380	75.00	10.9	Upper Marker

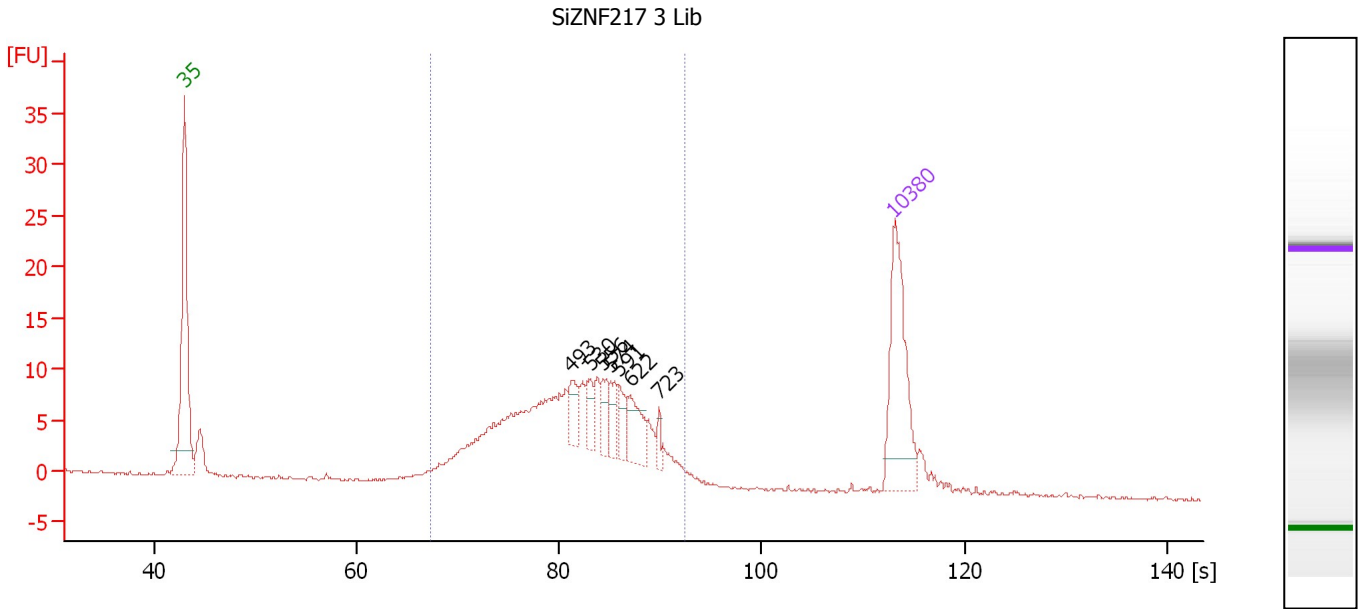
Region table for sample 5 : Scram 3 Lib

From [bp]	Molarity [pmol/l]	Average Size [bp]	Conc. [pg/μl]	To [bp]	Corr. Area	% of Total	Size distribution in CV [%]	Color
257	6,010.0	416	1,567.00	851	759.0	94	21.6	Blue

Assay Class: High Sensitivity DNA Assay
 Data Path: C:\...ents and Settings\Bioanalyzer\2012-03-13\2012-03-13_004.xad

Created: 3/13/2012 3:29:38 PM
 Modified: 3/13/2012 4:21:11 PM

Electropherogram Summary Continued ...



Overall Results for sample 6 : SiZNF217 3 Lib

Number of peaks found: 7 Corr. Area 1: 191.3
 Noise: 0.1

Peak table for sample 6 : SiZNF217 3 Lib

Peak	Size [bp]	Conc. [pg/μl]	Molarity [pmol/l]	Observations
1	35	125.00	5,411.3	Lower Marker
2	493	19.31	59.4	
3	530	16.14	46.1	
4	556	14.58	39.7	
5	574	15.20	40.1	
6	591	14.52	37.2	
7	622	29.07	70.9	
8	723	7.29	15.3	
9	10,380	75.00	10.9	Upper Marker

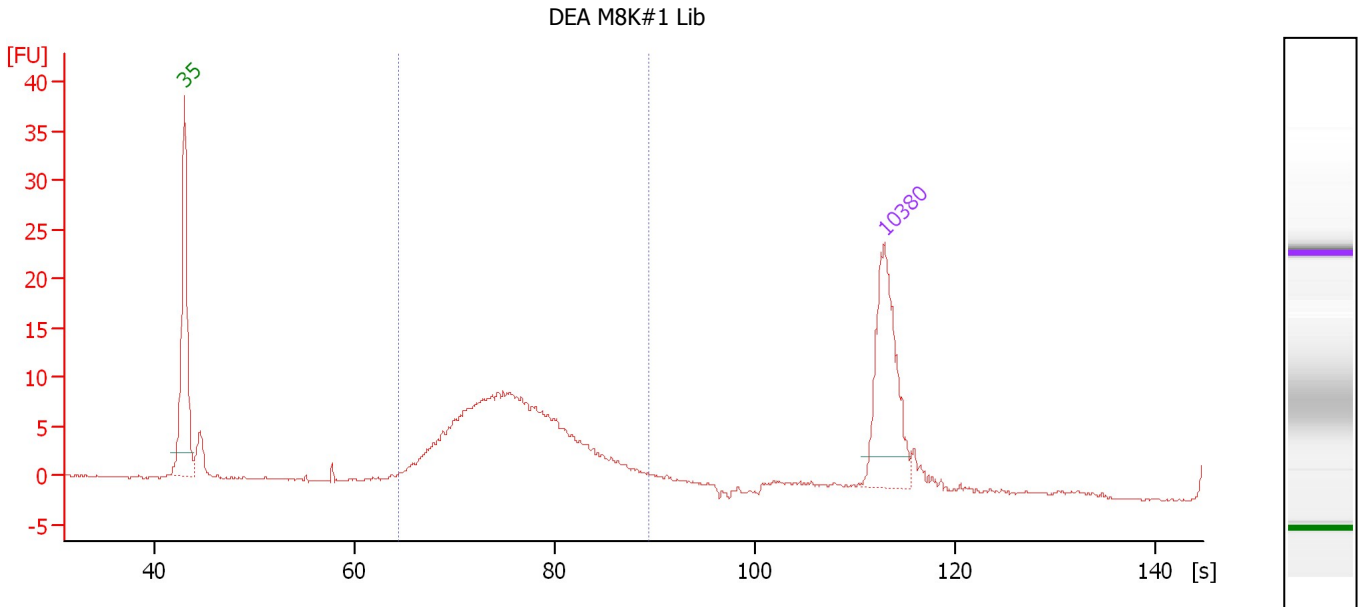
Region table for sample 6 : SiZNF217 3 Lib

From [bp]	Molarity [pmol/l]	Average Size [bp]	Conc. [pg/μl]	To [bp]	Corr. Area	% of Total	Size distribution in CV [%]	Color
295	1,613.5	510	504.83	899	191.3	90	23.1	Blue

Assay Class: High Sensitivity DNA Assay
 Data Path: C:\...ents and Settings\Bioanalyzer\2012-03-13\2012-03-13_004.xad

Created: 3/13/2012 3:29:38 PM
 Modified: 3/13/2012 4:21:11 PM

Electropherogram Summary Continued ...



Overall Results for sample 7 : DEA M8K#1 Lib

Number of peaks found: 0 Corr. Area 1: 166.0
 Noise: 0.1

Peak table for sample 7 : DEA M8K#1 Lib

Peak	Size [bp]	Conc. [pg/μl]	Molarity [pmol/l]	Observations
1	35	125.00	5,411.3	Lower Marker
2	10,380	75.00	10.9	Upper Marker

Region table for sample 7 : DEA M8K#1 Lib

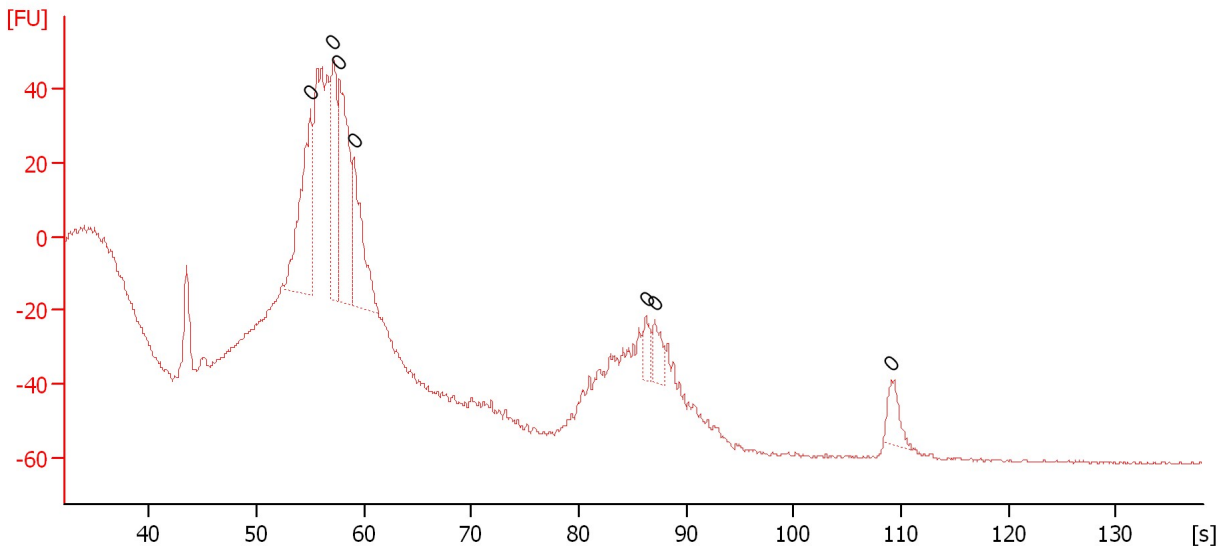
From [bp]	Molarity [pmol/l]	Average Size [bp]	Conc. [pg/μl]	To [bp]	Corr. Area	% of Total	Size distribution in CV [%]	Color
263	1,379.2	418	359.78	699	166.0	82	21.2	Blue

Assay Class: High Sensitivity DNA Assay
Data Path: C:\...ents and Settings\Bioanalyzer\2012-03-13\2012-03-13_004.xad

Created: 3/13/2012 3:29:38 PM
Modified: 3/13/2012 4:21:11 PM

Electropherogram Summary Continued ...

DEA M8K#2 Lib



Overall Results for sample 8 : DEA M8K#2 Lib

Number of peaks found: 0 Noise: 0.5

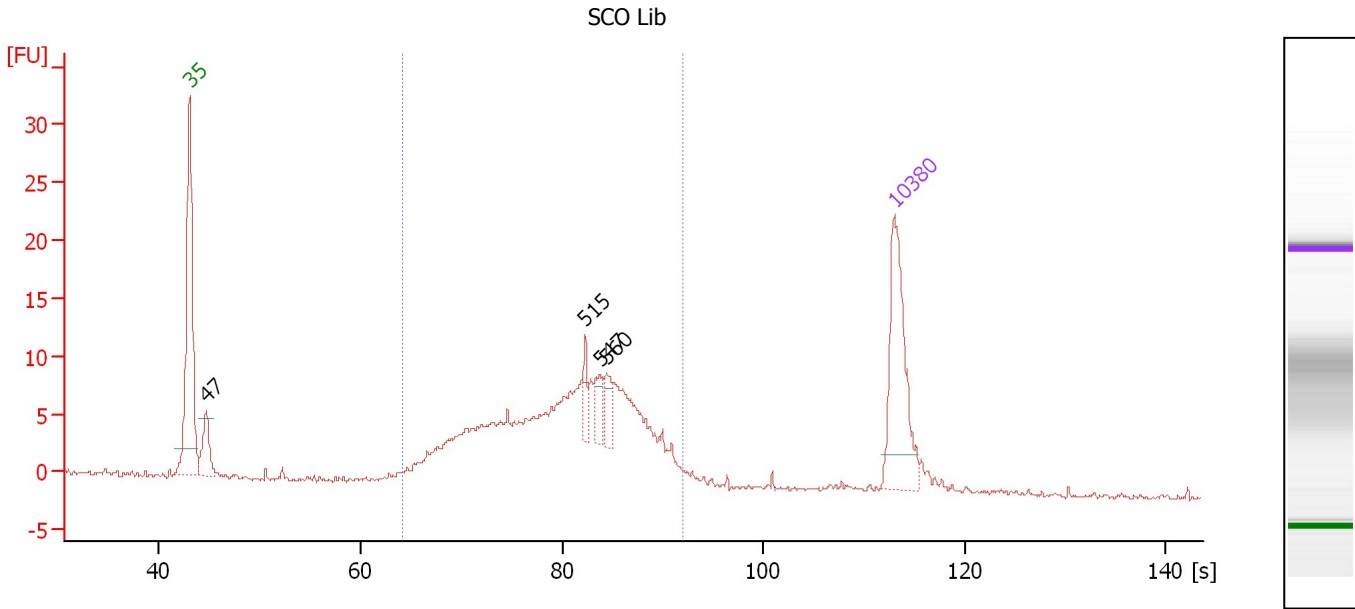
Peak table for sample 8 : DEA M8K#2 Lib

Peak	Size [bp]	Conc. [pg/μl]	Molarity [pmol/l]	Observations
1	0	0.00	0.0	
2	0	0.00	0.0	
3	0	0.00	0.0	
4	0	0.00	0.0	
5	0	0.00	0.0	
6	0	0.00	0.0	
7	0	0.00	0.0	

Assay Class: High Sensitivity DNA Assay
 Data Path: C:\...ents and Settings\Bioanalyzer\2012-03-13\2012-03-13_004.xad

Created: 3/13/2012 3:29:38 PM
 Modified: 3/13/2012 4:21:11 PM

Electropherogram Summary Continued ...



Overall Results for sample 9 : SCO Lib

Number of peaks found: 4 Corr. Area 1: 178.8
 Noise: 0.2

Peak table for sample 9 : SCO Lib

Peak	Size [bp]	Conc. [pg/μl]	Molarity [pmol/l]	Observations
1	35	125.00	5,411.3	Lower Marker
2	47	39.85	1,293.4	
3	515	14.70	43.2	
4	547	16.84	46.7	
5	560	18.22	49.3	
6	10,380	75.00	10.9	Upper Marker

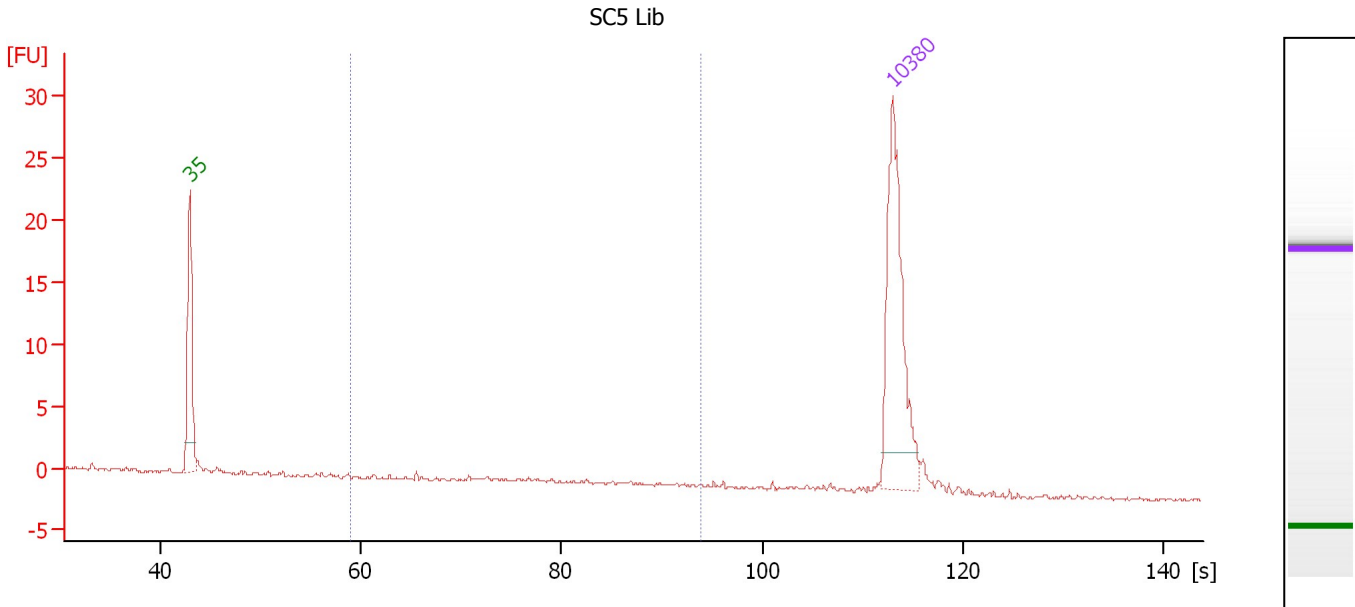
Region table for sample 9 : SCO Lib

From [bp]	Molarity [pmol/l]	Average Size [bp]	Conc. [pg/μl]	To [bp]	Corr. Area	% of Total	Size distribution in CV [%]	Color
261	1,785.3	491	526.56	872	178.8	89	25.1	Blue

Assay Class: High Sensitivity DNA Assay
 Data Path: C:\...ents and Settings\Bioanalyzer\2012-03-13\2012-03-13_004.xad

Created: 3/13/2012 3:29:38 PM
 Modified: 3/13/2012 4:21:11 PM

Electropherogram Summary Continued ...



Overall Results for sample 10 : SC5 Lib

Number of peaks found: 0 Corr. Area 1: 0.9
 Noise: 0.2

Peak table for sample 10 : SC5 Lib

Peak	Size [bp]	Conc. [pg/μl]	Molarity [pmol/l]	Observations
1	35	125.00	5,411.3	Lower Marker
2	10,380	75.00	10.9	Upper Marker

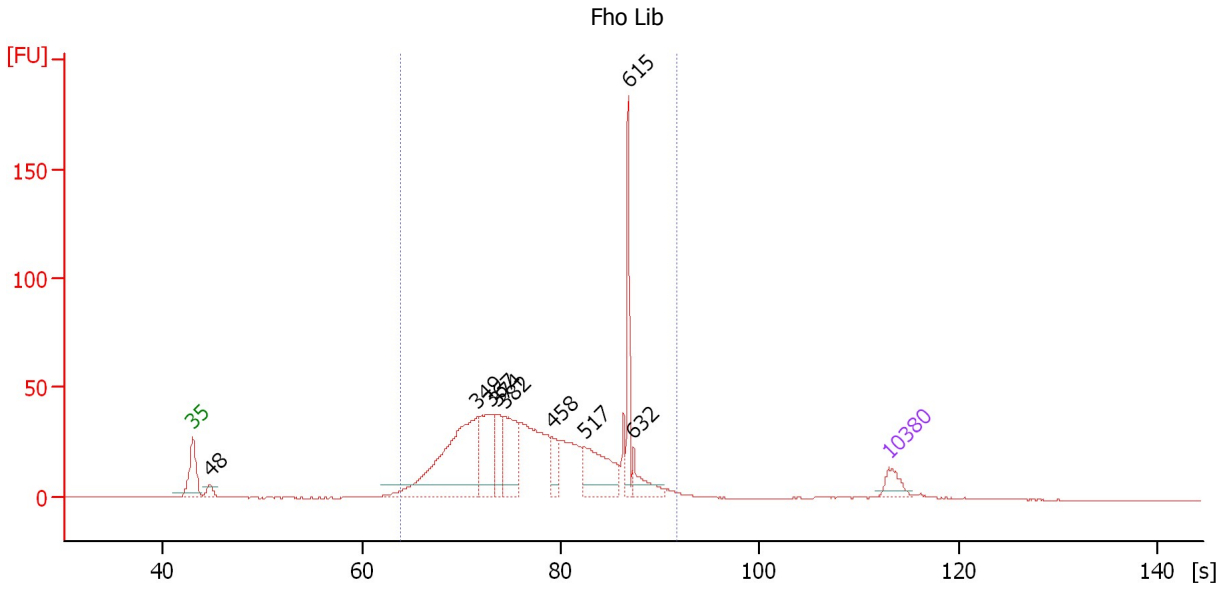
Region table for sample 10 : SC5 Lib

From [bp]	Molarity [pmol/l]	Average Size [bp]	Conc. [pg/μl]	To [bp]	Corr. Area	% of Total	Size distribution in CV [%]	Color
200	7.7	465	1.97	1,000	0.9	14	36.4	Blue

Assay Class: High Sensitivity DNA Assay
 Data Path: C:\...ents and Settings\Bioanalyzer\2012-03-13\2012-03-13_004.xad

Created: 3/13/2012 3:29:38 PM
 Modified: 3/13/2012 4:21:11 PM

Electropherogram Summary Continued ...



Overall Results for sample 11 : Fho Lib

Number of peaks found: 9 Corr. Area 1: 814.8
 Noise: 0.1

Peak table for sample 11 : Fho Lib

Peak	Size [bp]	Conc. [pg/μl]	Molarity [pmol/l]	Observations
1	35	125.00	5,411.3	Lower Marker
2	48	72.14	2,296.8	
3	349	1,129.04	4,905.2	
4	367	385.18	1,591.9	
5	374	196.29	795.4	
6	382	382.09	1,513.6	
7	458	127.00	420.4	
8	517	401.78	1,176.7	
9	615	273.27	673.3	
10	632	135.32	324.4	
11	10,380	75.00	10.9	Upper Marker

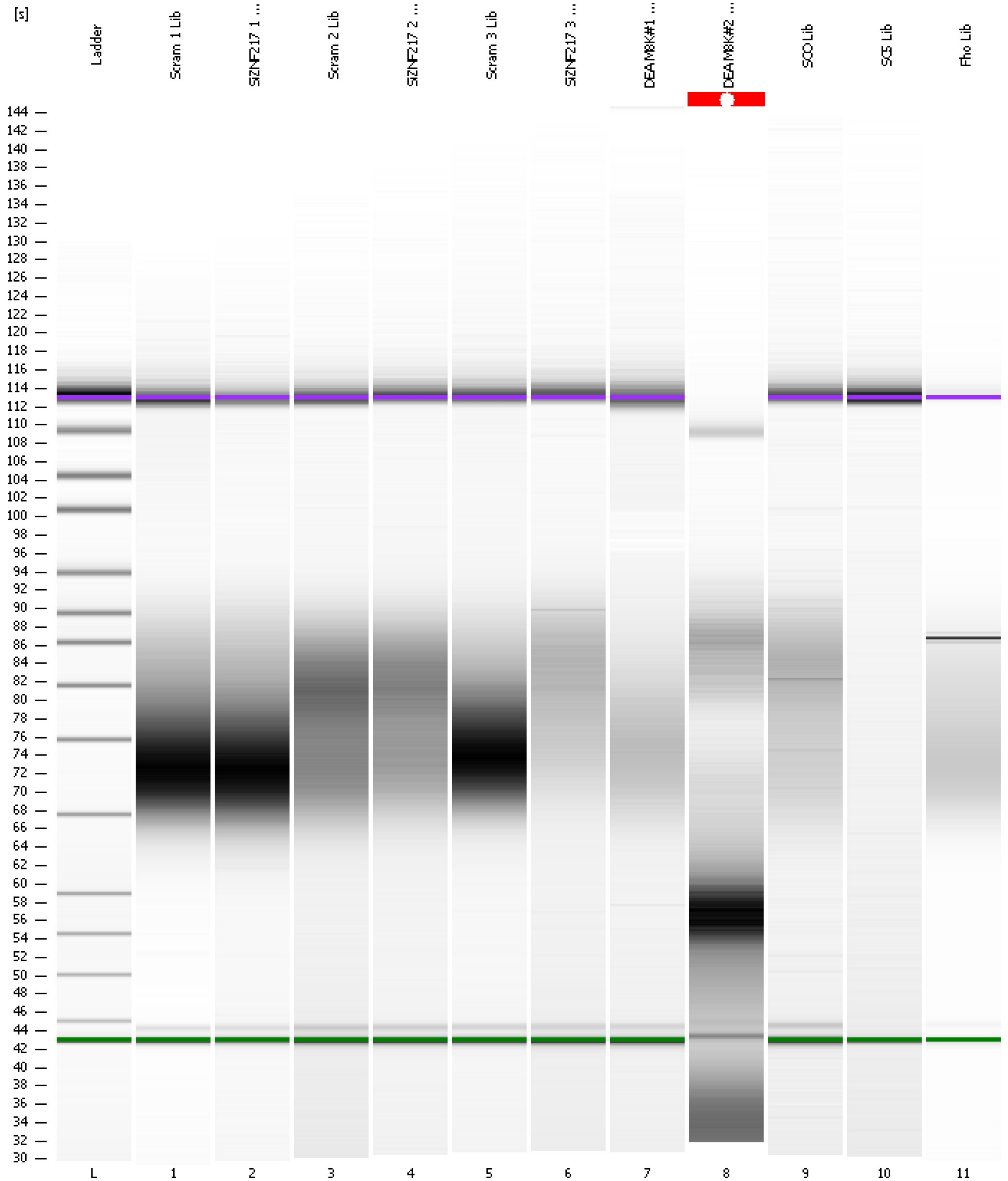
Region table for sample 11 : Fho Lib

From [bp]	Molarity [pmol/l]	Average Size [bp]	Conc. [pg/μl]	To [bp]	Corr. Area	% of Total	Size distribution in CV [%]	Color
257	16,376.0	442	4,388.39	845	814.8	95	25.2	Blue

Assay Class: High Sensitivity DNA Assay
Data Path: C:\...ents and Settings\Bioanalyzer\2012-03-13\2012-03-13_004.xad

Created: 3/13/2012 3:29:38 PM
Modified: 3/13/2012 4:21:11 PM

Gel Image



Assay Class: High Sensitivity DNA Assay
 Data Path: C:\...ents and Settings\Bioanalyzer\2012-03-13\2012-03-13_004.xad

Created: 3/13/2012 3:29:38 PM
 Modified: 3/13/2012 4:21:11 PM

Run Logbook

Description	Number	Source	Category	Sub Category	Time	Time Zone	User	Host
Run ended on port 1 (Number of wells acquired: 12)		Instrument	Run		3/13/2012 4:10:57 PM	(GMT --07:00) Pacific Standard Time	UC Davis	D8XSMGH1
Run started on port 1 (File: C:\Documents and Settings\Bioanalyzer\2012-03-13\2012-03-13_004.xad)		Instrument	Run		3/13/2012 3:29:44 PM	(GMT --07:00) Pacific Standard Time	UC Davis	D8XSMGH1
Product Number : G2938B		Instrument	Run		3/13/2012 3:29:44 PM	(GMT --07:00) Pacific Standard Time	UC Davis	D8XSMGH1
Name :		Instrument	Run		3/13/2012 3:29:44 PM	(GMT --07:00) Pacific Standard Time	UC Davis	D8XSMGH1
Vendor : Agilent Technologies		Instrument	Run		3/13/2012 3:29:44 PM	(GMT --07:00) Pacific Standard Time	UC Davis	D8XSMGH1
Serial# : DE13701086		Instrument	Run		3/13/2012 3:29:44 PM	(GMT --07:00) Pacific Standard Time	UC Davis	D8XSMGH1
Firmware : C.01.069		Instrument	Run		3/13/2012 3:29:44 PM	(GMT --07:00) Pacific Standard Time	UC Davis	D8XSMGH1
Cartridge : Electrode		Instrument	Run		3/13/2012 3:29:44 PM	(GMT --07:00) Pacific Standard Time	UC Davis	D8XSMGH1