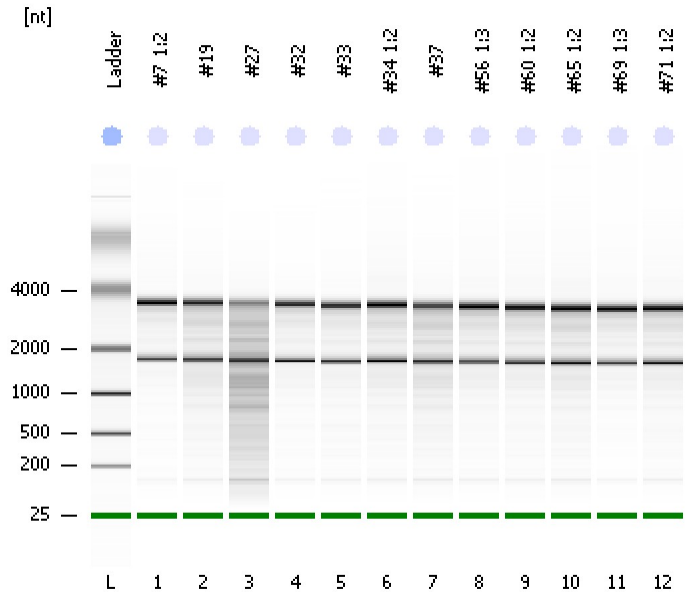


Assay Class: Eukaryote Total RNA Nano
Data Path: C:\...ents and Settings\Bioanalyzer\2012-03-13\2012-03-13_005.xad

Created: 3/13/2012 4:48:23 PM
Modified: 3/13/2012 5:12:13 PM

Electrophoresis File Run Summary



Instrument Information:

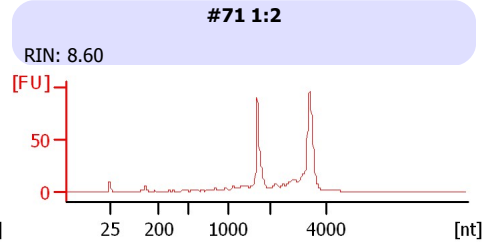
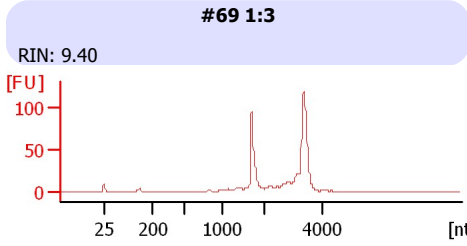
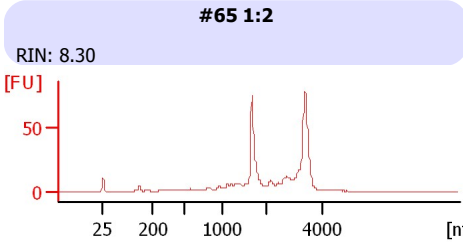
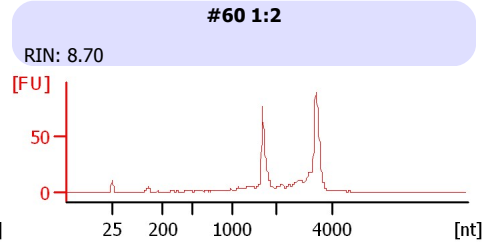
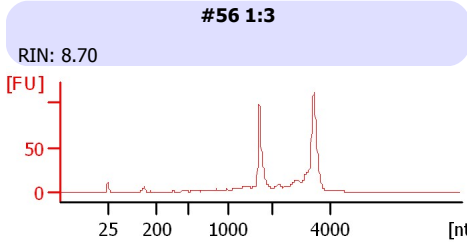
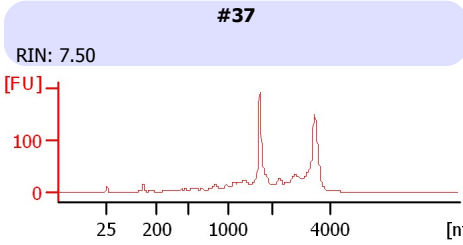
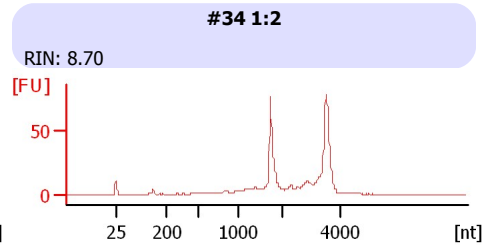
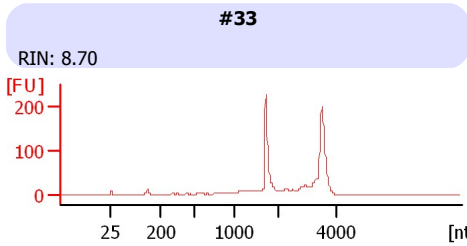
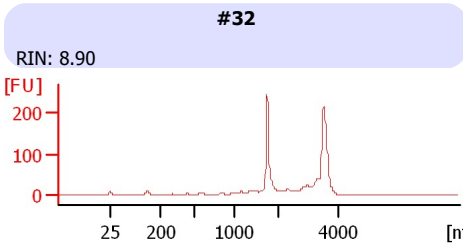
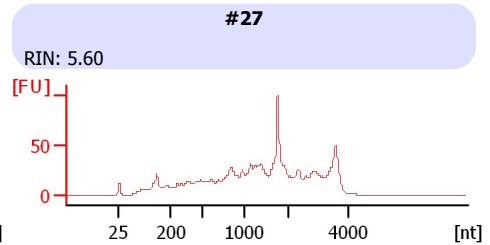
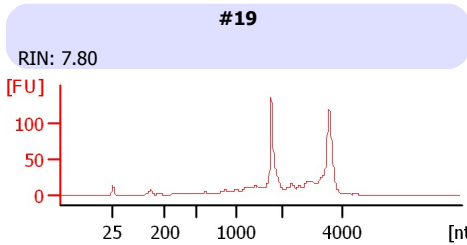
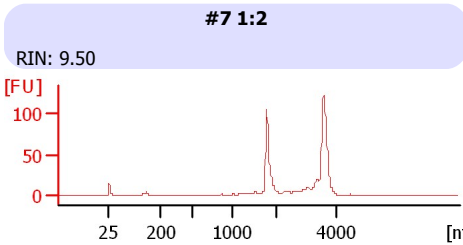
Instrument Name: DE13701086 Firmware: C.01.069
Serial#: DE13701086 Type: G2938B

Assay Information:

Assay Origin Path: C:\Program Files\Agilent\2100 bioanalyzer\2100 expert\assays\RNA\Eukaryote Total RNA Nano Series II.xsy
Assay Class: Eukaryote Total RNA Nano
Version: 2.6
Assay Comments: Total RNA Analysis ng sensitivity (Eukaryote)
© Copyright 2003 - 2009 Agilent Technologies, Inc.

Chip Information:

Chip Lot #:
Reagent Kit Lot #:
Chip Comments:



Assay Class: Eukaryote Total RNA Nano
 Data Path: C:\...ents and Settings\Bioanalyzer\2012-03-13\2012-03-13_005.xad

Created: 3/13/2012 4:48:23 PM
 Modified: 3/13/2012 5:12:13 PM

Electrophoresis File Run Summary (Chip Summary)

Sample Name	Sample Comment	Status	Result Label	Result Color
#7 1:2		✓	RIN: 9.50	
#19		✓	RIN: 7.80	
#27		✓	RIN: 5.60	
#32		✓	RIN: 8.90	
#33		✓	RIN: 8.70	
#34 1:2		✓	RIN: 8.70	
#37		✓	RIN: 7.50	
#56 1:3		✓	RIN: 8.70	
#60 1:2		✓	RIN: 8.70	
#65 1:2		✓	RIN: 8.30	
#69 1:3		✓	RIN: 9.40	
#71 1:2		✓	RIN: 8.60	
Ladder		✓	All Other Samples	

Chip Lot #

Reagent Kit Lot #

Chip Comments :

Assay Class: Eukaryote Total RNA Nano
Data Path: C:\...ents and Settings\Bioanalyzer\2012-03-13\2012-03-13_005.xad

Created: 3/13/2012 4:48:23 PM
Modified: 3/13/2012 5:12:13 PM

Electrophoresis Assay Details

General Analysis Settings

Number of Available Sample and Ladder Wells (Max.) : 13
Minimum Visible Range [s] : 17
Maximum Visible Range [s] : 70
Start Analysis Time Range [s] : 19
End Analysis Time Range [s] : 69
Ladder Concentration [ng/μl] : 150
Lower Marker Concentration [ng/μl] : 0
Upper Marker Concentration [ng/μl] : 0
Used Lower Marker for Quantitation
Standard Curve Fit is Logarithmic
Show Data Aligned to Lower Marker

Integrator Settings

Integration Start Time [s] : 19
Integration End Time [s] : 69
Slope Threshold : 0.6
Height Threshold [FU] : 0.5
Area Threshold : 0.2
Width Threshold [s] : 0.5
Baseline Plateau [s] : 6

Filter Settings

Filter Width [s] : 0.5
Polynomial Order : 4

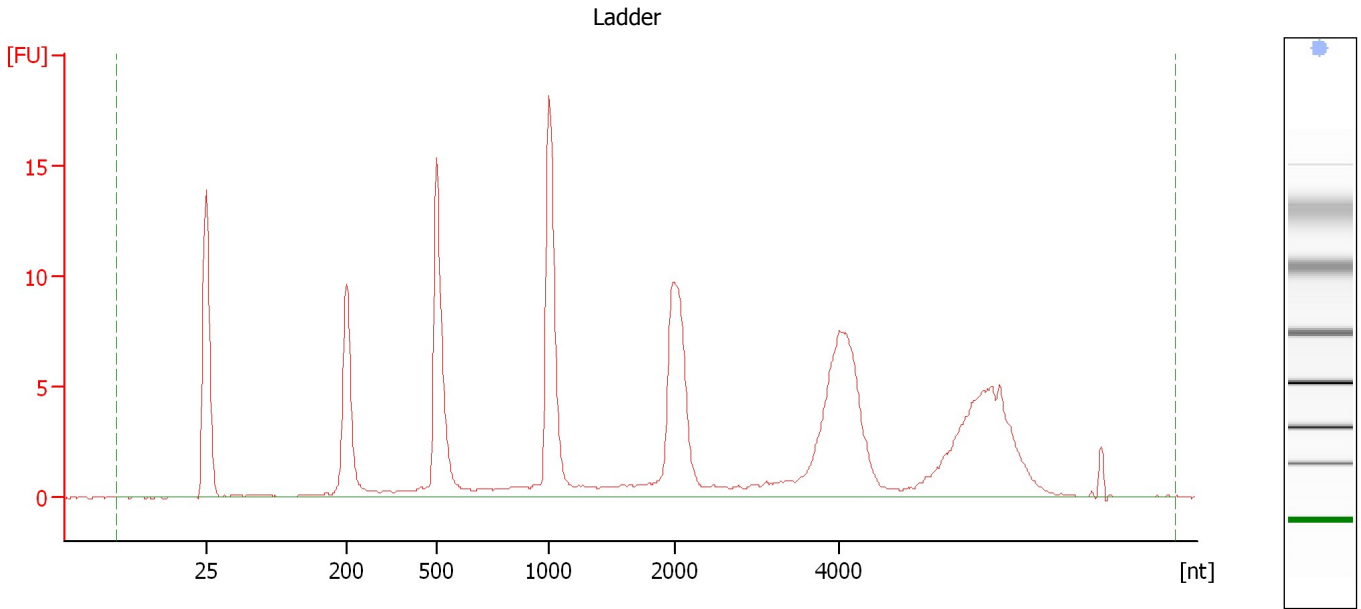
Ladder

Ladder Peak	Size
1	25
2	200
3	500
4	1000
5	2000
6	4000

Assay Class: Eukaryote Total RNA Nano
Data Path: C:\...ents and Settings\Bioanalyzer\2012-03-13\2012-03-13_005.xad

Created: 3/13/2012 4:48:23 PM
Modified: 3/13/2012 5:12:13 PM

Electropherogram Summary



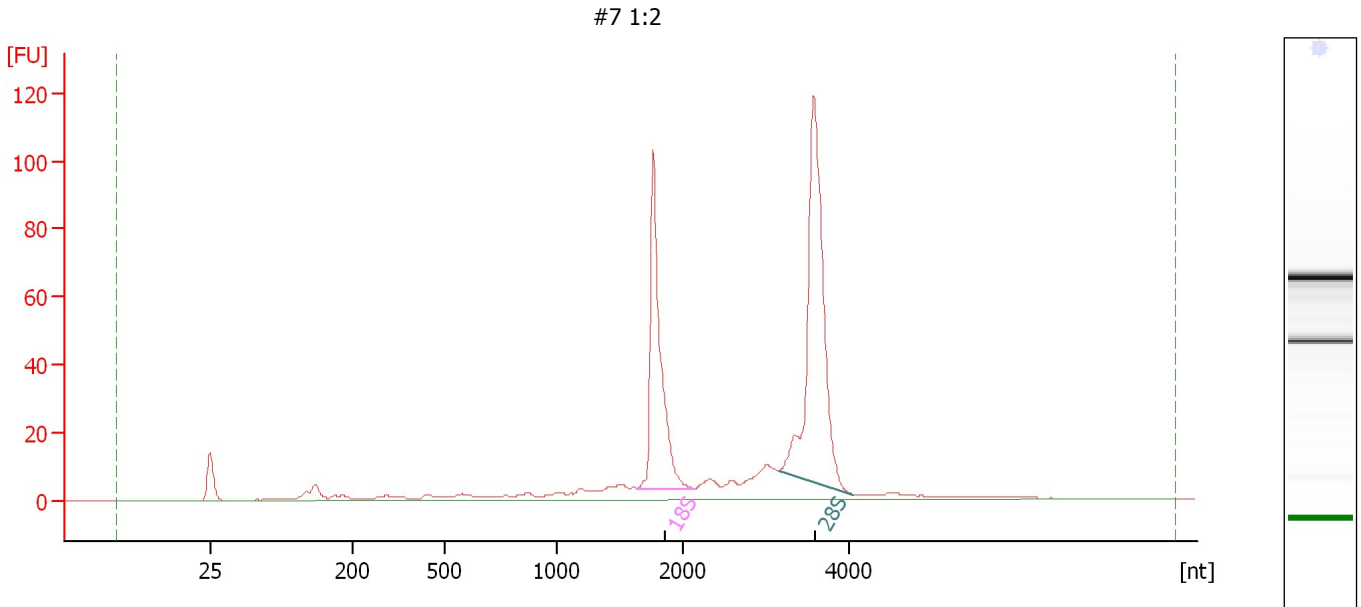
Overall Results for Ladder

RNA Area:	149.4	Result Flagging Color:	
RNA Concentration:	150 ng/ μ l	Result Flagging Label:	All Other Samples

Assay Class: Eukaryote Total RNA Nano
 Data Path: C:\...ents and Settings\Bioanalyzer\2012-03-13\2012-03-13_005.xad

Created: 3/13/2012 4:48:23 PM
 Modified: 3/13/2012 5:12:13 PM

Electropherogram Summary Continued ...



Setpoint Deviations for sample 1 : #7 1:2

Height Threshold [FU] : 2

Overall Results for sample 1 : #7 1:2

RNA Area:	500.1	RNA Integrity Number (RIN):	9.5 (B.02.08)
RNA Concentration:	502 ng/μl	Result Flagging Color:	
rRNA Ratio [28s / 18s]:	1.6	Result Flagging Label:	RIN: 9.50

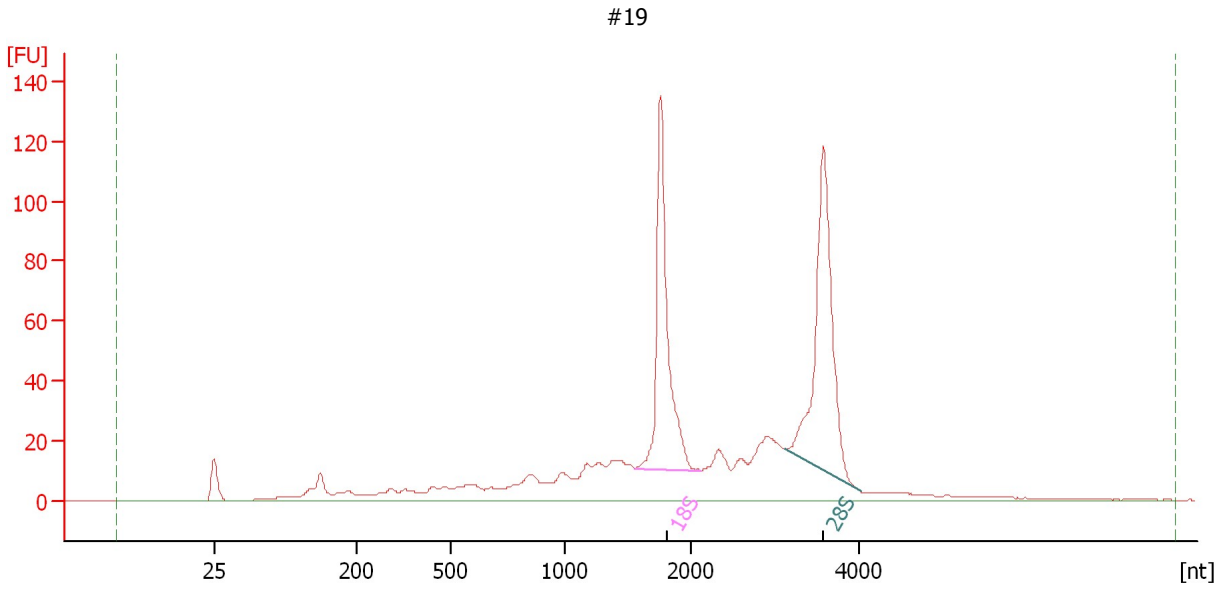
Fragment table for sample 1 : #7 1:2

Name	Start Size [nt]	End Size [nt]	Area	% of total Area
18S	1,629	2,132	118.5	23.7
28S	3,149	4,038	185.1	37.0

Assay Class: Eukaryote Total RNA Nano
 Data Path: C:\...ents and Settings\Bioanalyzer\2012-03-13\2012-03-13_005.xad

Created: 3/13/2012 4:48:23 PM
 Modified: 3/13/2012 5:12:13 PM

Electropherogram Summary Continued ...



Setpoint Deviations for sample 2 : #19

Height Threshold [FU] : 2

Overall Results for sample 2 : #19

RNA Area:	866.3	RNA Integrity Number (RIN):	7.8 (B.02.08)
RNA Concentration:	870 ng/μl	Result Flagging Color:	
rRNA Ratio [28s / 18s]:	1.2	Result Flagging Label:	RIN: 7.80

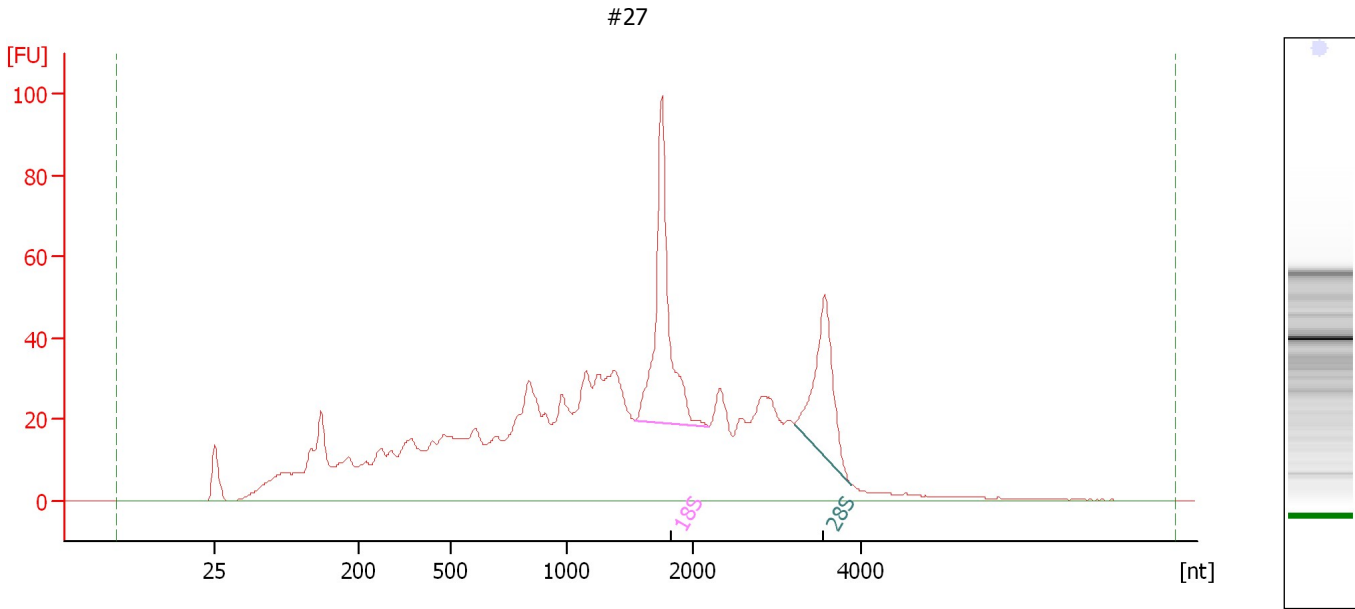
Fragment table for sample 2 : #19

Name	Start Size [nt]	End Size [nt]	Area	% of total Area
18S	1,559	2,122	153.2	17.7
28S	3,131	4,025	181.9	21.0

Assay Class: Eukaryote Total RNA Nano
Data Path: C:\...ents and Settings\Bioanalyzer\2012-03-13\2012-03-13_005.xad

Created: 3/13/2012 4:48:23 PM
Modified: 3/13/2012 5:12:13 PM

Electropherogram Summary Continued ...



Overall Results for sample 3 : #27

RNA Area: 1,366.9 RNA Integrity Number (RIN): 5.6 (B.02.08)
RNA Concentration: 1,373 ng/μl Result Flagging Color:
rRNA Ratio [28s / 18s]: 0.6 Result Flagging Label: RIN: 5.60

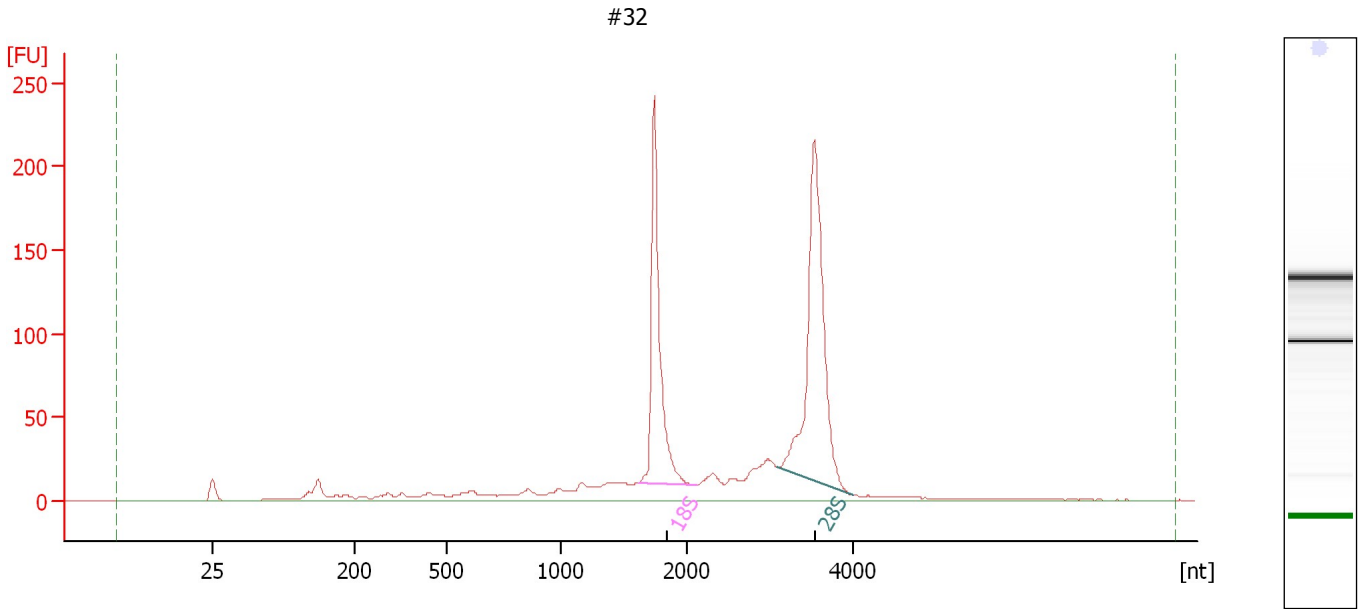
Fragment table for sample 3 : #27

Name	Start Size [nt]	End Size [nt]	Area	% of total Area
18S	1,544	2,186	115.7	8.5
28S	3,206	3,881	72.2	5.3

Assay Class: Eukaryote Total RNA Nano
Data Path: C:\...ents and Settings\Bioanalyzer\2012-03-13\2012-03-13_005.xad

Created: 3/13/2012 4:48:23 PM
Modified: 3/13/2012 5:12:13 PM

Electropherogram Summary Continued ...



Overall Results for sample 4 : #32

RNA Area:	1,068.0	RNA Integrity Number (RIN):	8.9 (B.02.08)
RNA Concentration:	1,072 ng/μl	Result Flagging Color:	
rRNA Ratio [28s / 18s]:	1.4	Result Flagging Label:	RIN: 8.90

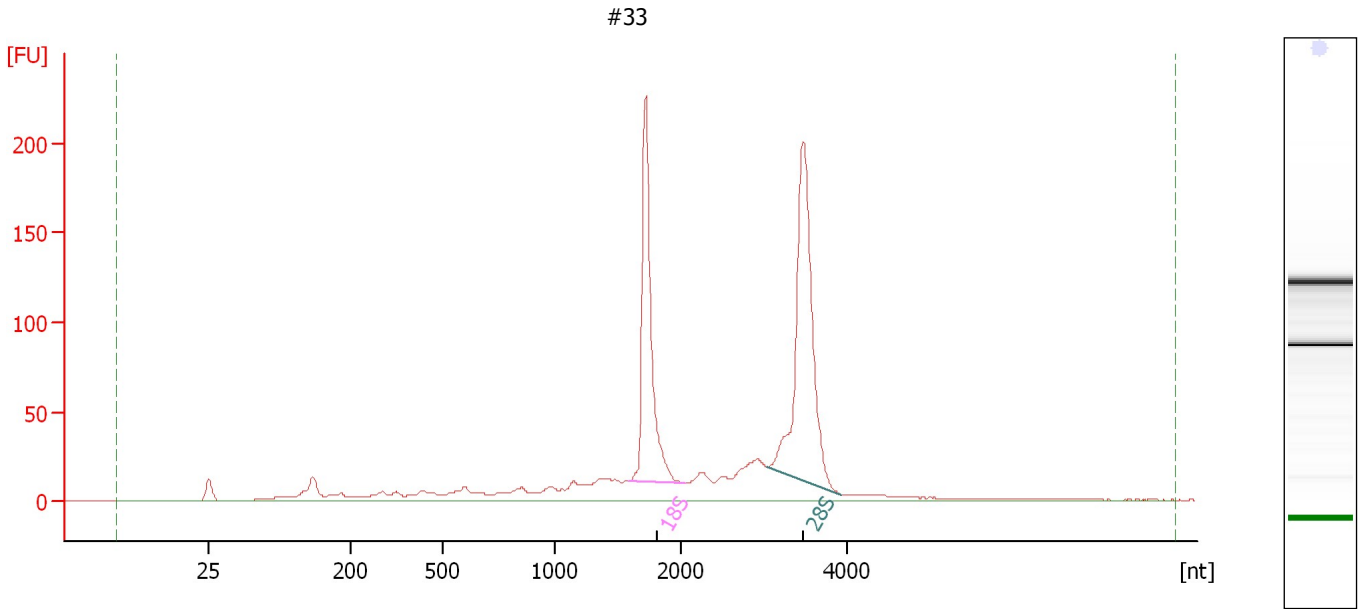
Fragment table for sample 4 : #32

Name	Start Size [nt]	End Size [nt]	Area	% of total Area
18S	1,615	2,108	230.9	21.6
28S	3,082	3,993	334.3	31.3

Assay Class: Eukaryote Total RNA Nano
Data Path: C:\...ents and Settings\Bioanalyzer\2012-03-13\2012-03-13_005.xad

Created: 3/13/2012 4:48:23 PM
Modified: 3/13/2012 5:12:13 PM

Electropherogram Summary Continued ...



Overall Results for sample 5 : #33

RNA Area: 1,075.6 RNA Integrity Number (RIN): 8.7 (B.02.08)
RNA Concentration: 1,080 ng/μl Result Flagging Color:
rRNA Ratio [28s / 18s]: 1.4 Result Flagging Label: RIN: 8.70

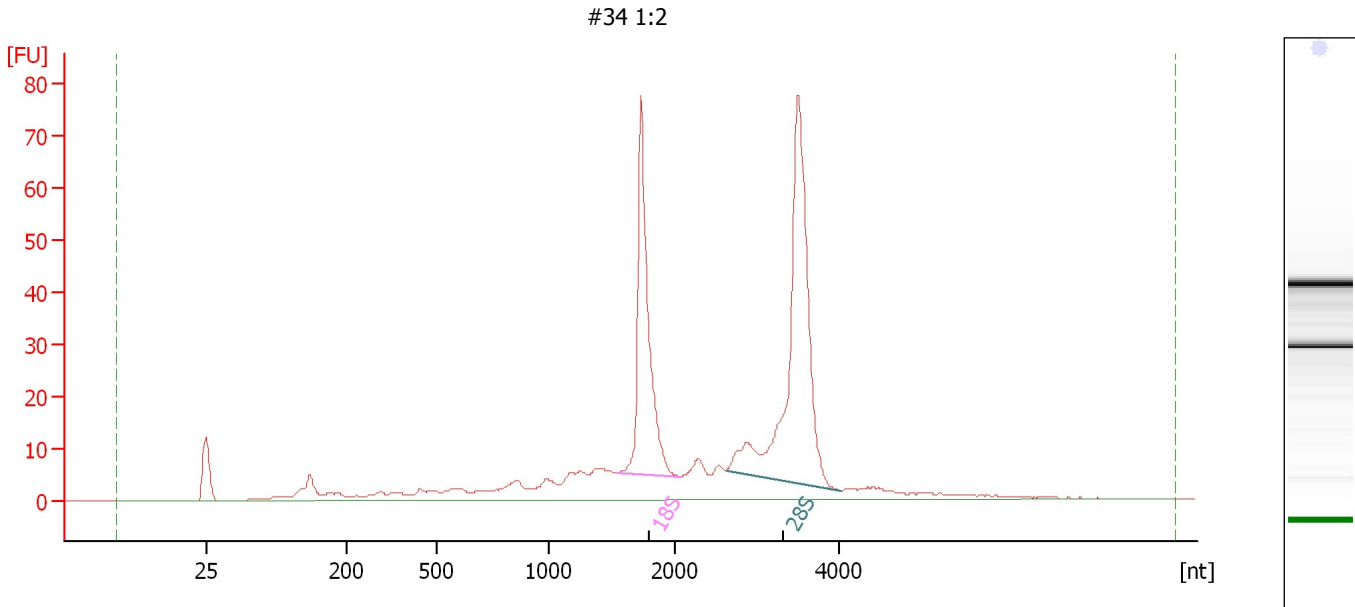
Fragment table for sample 5 : #33

Name	Start Size [nt]	End Size [nt]	Area	% of total Area
18S	1,585	2,041	227.0	21.1
28S	3,035	3,925	317.7	29.5

Assay Class: Eukaryote Total RNA Nano
 Data Path: C:\...ents and Settings\Bioanalyzer\2012-03-13\2012-03-13_005.xad

Created: 3/13/2012 4:48:23 PM
 Modified: 3/13/2012 5:12:13 PM

Electropherogram Summary Continued ...



Setpoint Deviations for sample 6 : #34 1:2

Height Threshold [FU] : 2

Overall Results for sample 6 : #34 1:2

RNA Area:	468.3	RNA Integrity Number (RIN):	8.7 (B.02.08)
RNA Concentration:	470 ng/μl	Result Flagging Color:	
rRNA Ratio [28s / 18s]:	1.7	Result Flagging Label:	RIN: 8.70

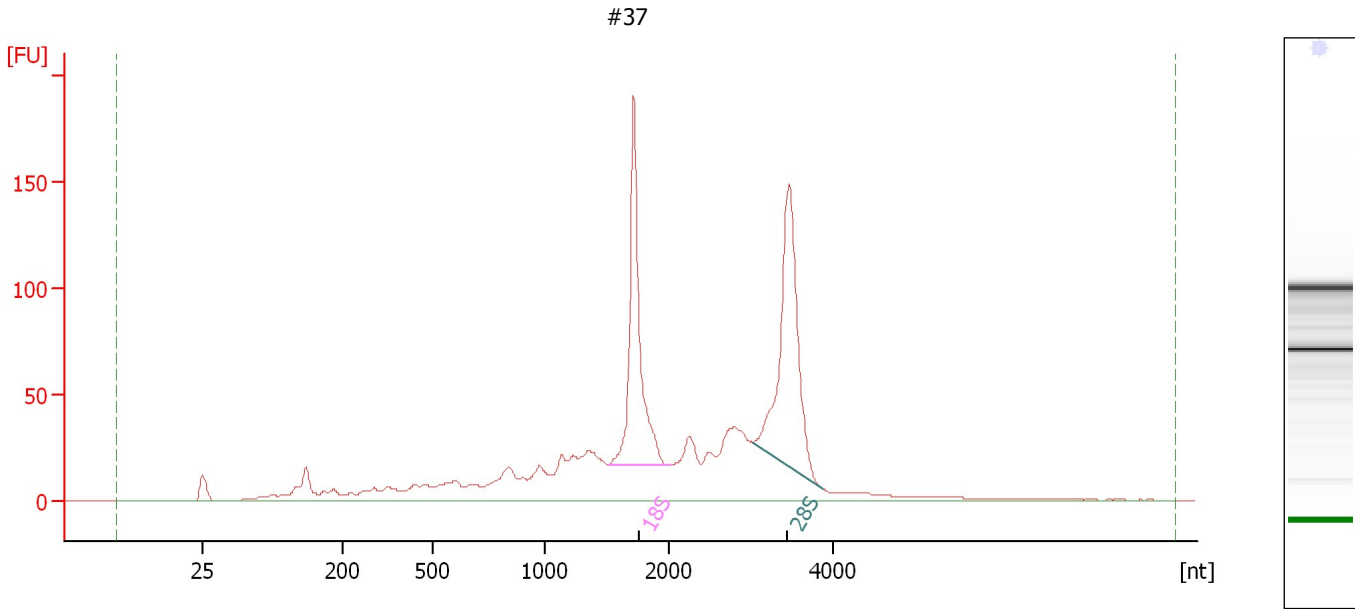
Fragment table for sample 6 : #34 1:2

Name	Start Size [nt]	End Size [nt]	Area	% of total Area
18S	1,538	2,064	90.4	19.3
28S	2,623	4,025	152.0	32.5

Assay Class: Eukaryote Total RNA Nano
Data Path: C:\...ents and Settings\Bioanalyzer\2012-03-13\2012-03-13_005.xad

Created: 3/13/2012 4:48:23 PM
Modified: 3/13/2012 5:12:13 PM

Electropherogram Summary Continued ...



Overall Results for sample 7 : #37

RNA Area: 1,323.3 RNA Integrity Number (RIN): 7.5 (B.02.08)
RNA Concentration: 1,329 ng/μl Result Flagging Color:
rRNA Ratio [28s / 18s]: 1.1 Result Flagging Label: RIN: 7.50

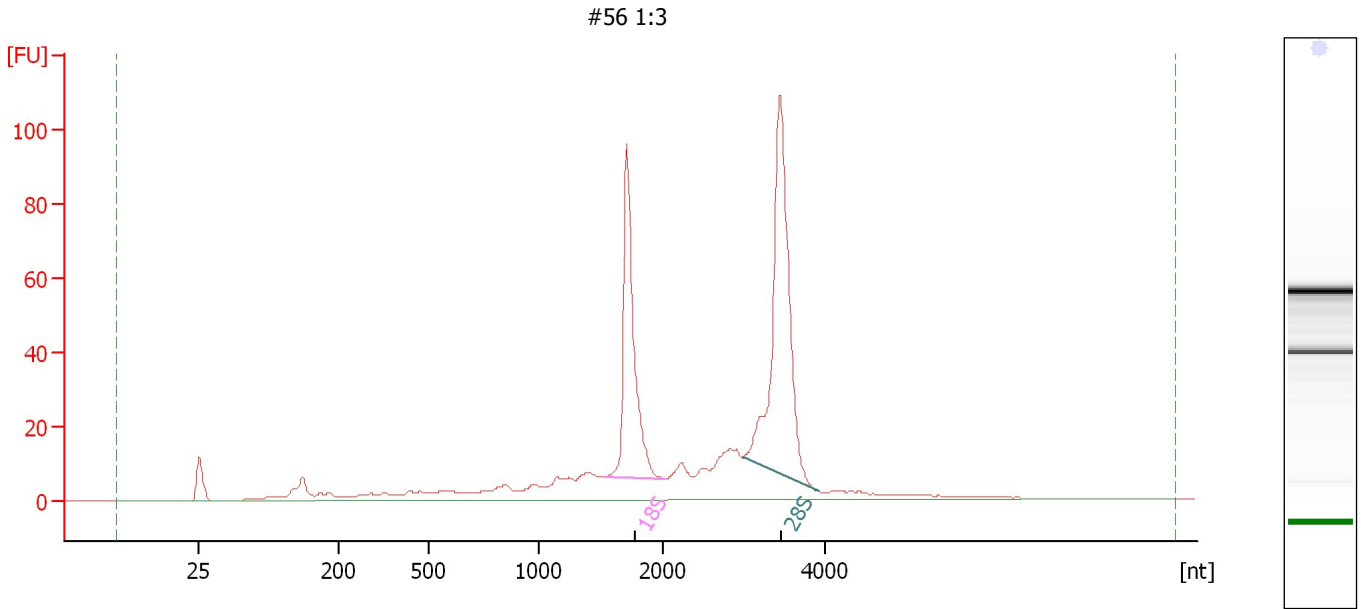
Fragment table for sample 7 : #37

Name	Start Size [nt]	End Size [nt]	Area	% of total Area
18S	1,516	2,036	210.5	15.9
28S	3,042	3,892	241.8	18.3

Assay Class: Eukaryote Total RNA Nano
Data Path: C:\...ents and Settings\Bioanalyzer\2012-03-13\2012-03-13_005.xad

Created: 3/13/2012 4:48:23 PM
Modified: 3/13/2012 5:12:13 PM

Electropherogram Summary Continued ...



Overall Results for sample 8 : #56 1:3

RNA Area: 601.4 RNA Integrity Number (RIN): 8.7 (B.02.08)
RNA Concentration: 604 ng/μl Result Flagging Color:
rRNA Ratio [28s / 18s]: 1.6 Result Flagging Label: RIN: 8.70

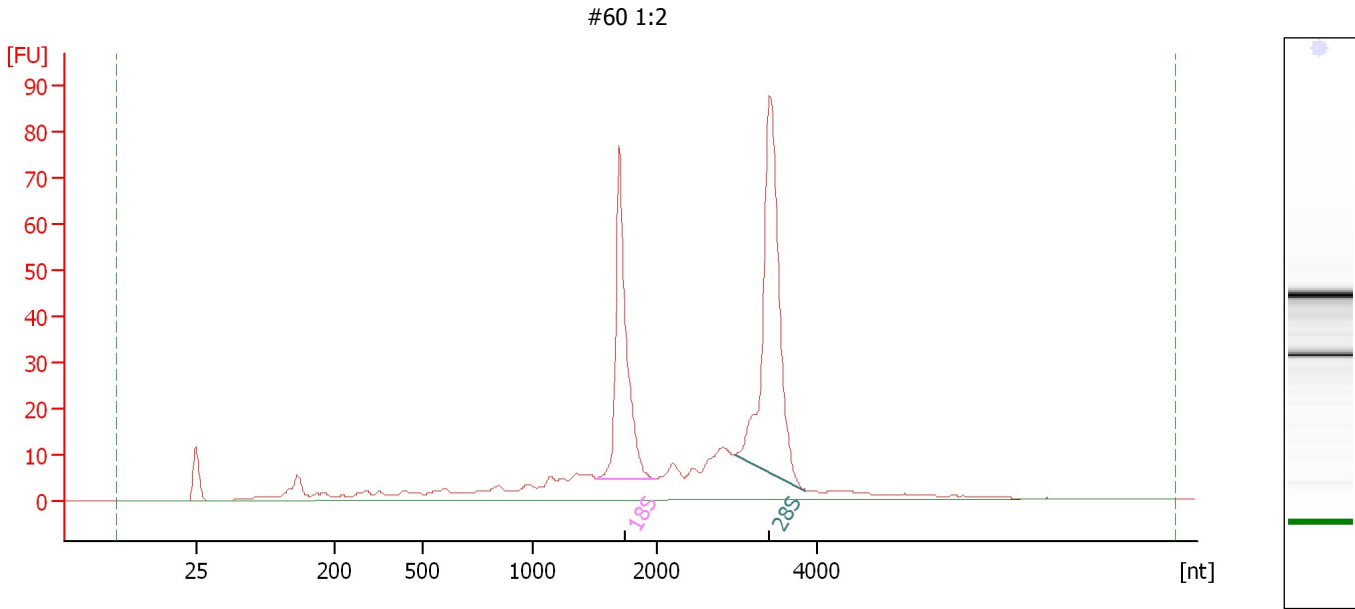
Fragment table for sample 8 : #56 1:3

Name	Start Size [nt]	End Size [nt]	Area	% of total Area
18S	1,528	2,020	110.3	18.3
28S	2,994	3,927	179.2	29.8

Assay Class: Eukaryote Total RNA Nano
Data Path: C:\...ents and Settings\Bioanalyzer\2012-03-13\2012-03-13_005.xad

Created: 3/13/2012 4:48:23 PM
Modified: 3/13/2012 5:12:13 PM

Electropherogram Summary Continued ...



Overall Results for sample 9 : #60 1:2

RNA Area: 486.8 RNA Integrity Number (RIN): 8.7 (B.02.08)
RNA Concentration: 489 ng/μl Result Flagging Color:
rRNA Ratio [28s / 18s]: 1.5 Result Flagging Label: RIN: 8.70

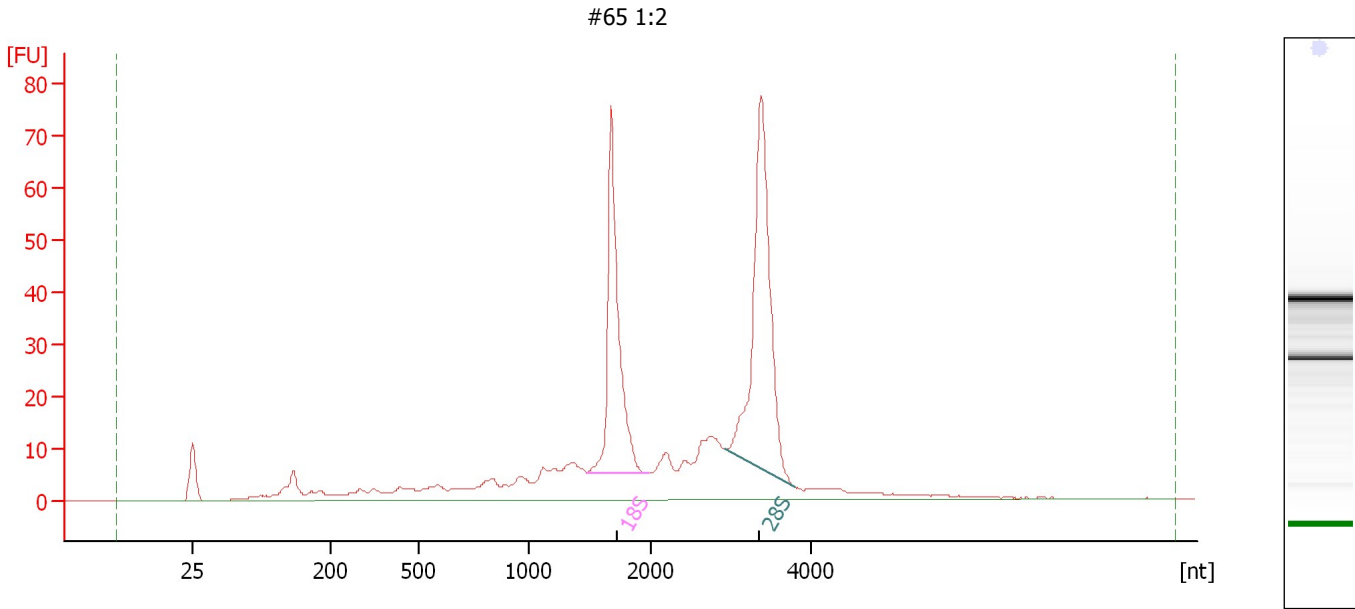
Fragment table for sample 9 : #60 1:2

Name	Start Size [nt]	End Size [nt]	Area	% of total Area
18S	1,515	1,985	92.7	19.0
28S	2,984	3,844	140.8	28.9

Assay Class: Eukaryote Total RNA Nano
 Data Path: C:\...ents and Settings\Bioanalyzer\2012-03-13\2012-03-13_005.xad

Created: 3/13/2012 4:48:23 PM
 Modified: 3/13/2012 5:12:13 PM

Electropherogram Summary Continued ...



Overall Results for sample 10 : #65 1:2

RNA Area:	510.2	RNA Integrity Number (RIN):	8.3 (B.02.08)
RNA Concentration:	512 ng/μl	Result Flagging Color:	
rRNA Ratio [28s / 18s]:	1.4	Result Flagging Label:	RIN: 8.30

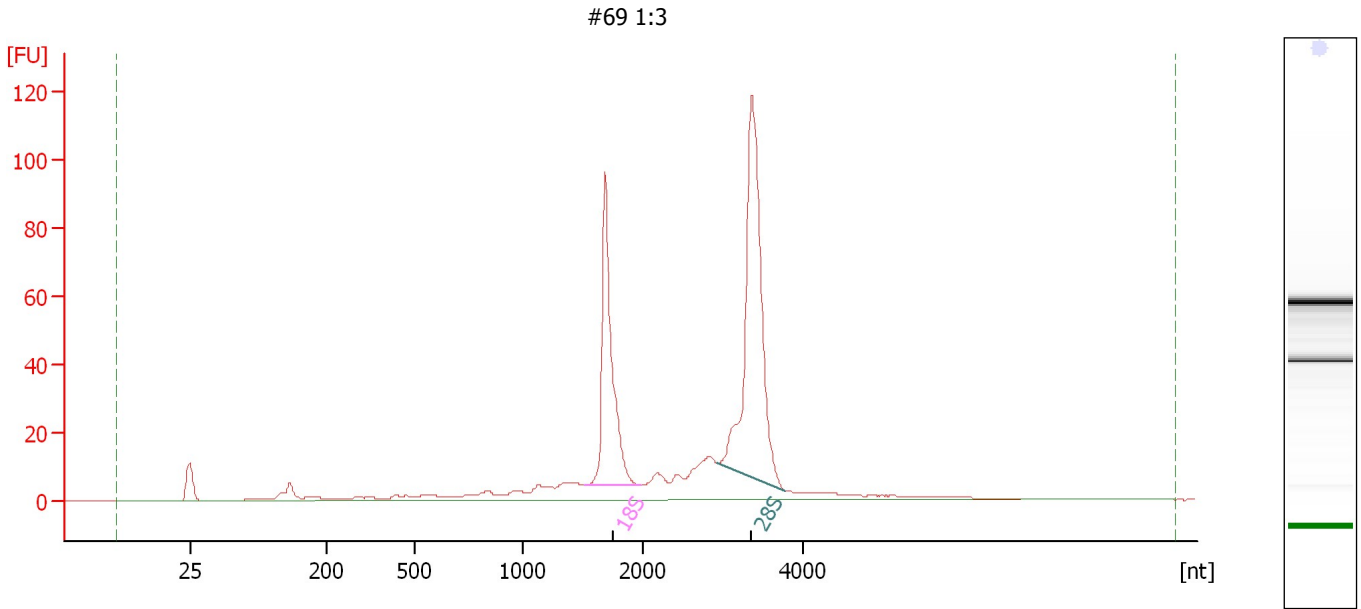
Fragment table for sample 10 : #65 1:2

Name	Start Size [nt]	End Size [nt]	Area	% of total Area
18S	1,483	1,992	90.7	17.8
28S	2,934	3,800	128.4	25.2

Assay Class: Eukaryote Total RNA Nano
 Data Path: C:\...ents and Settings\Bioanalyzer\2012-03-13\2012-03-13_005.xad

Created: 3/13/2012 4:48:23 PM
 Modified: 3/13/2012 5:12:13 PM

Electropherogram Summary Continued ...



Overall Results for sample 11 : #69 1:3

RNA Area:	551.8	RNA Integrity Number (RIN):	9.4 (B.02.08)
RNA Concentration:	554 ng/μl	Result Flagging Color:	
rRNA Ratio [28s / 18s]:	1.7	Result Flagging Label:	RIN: 9.40

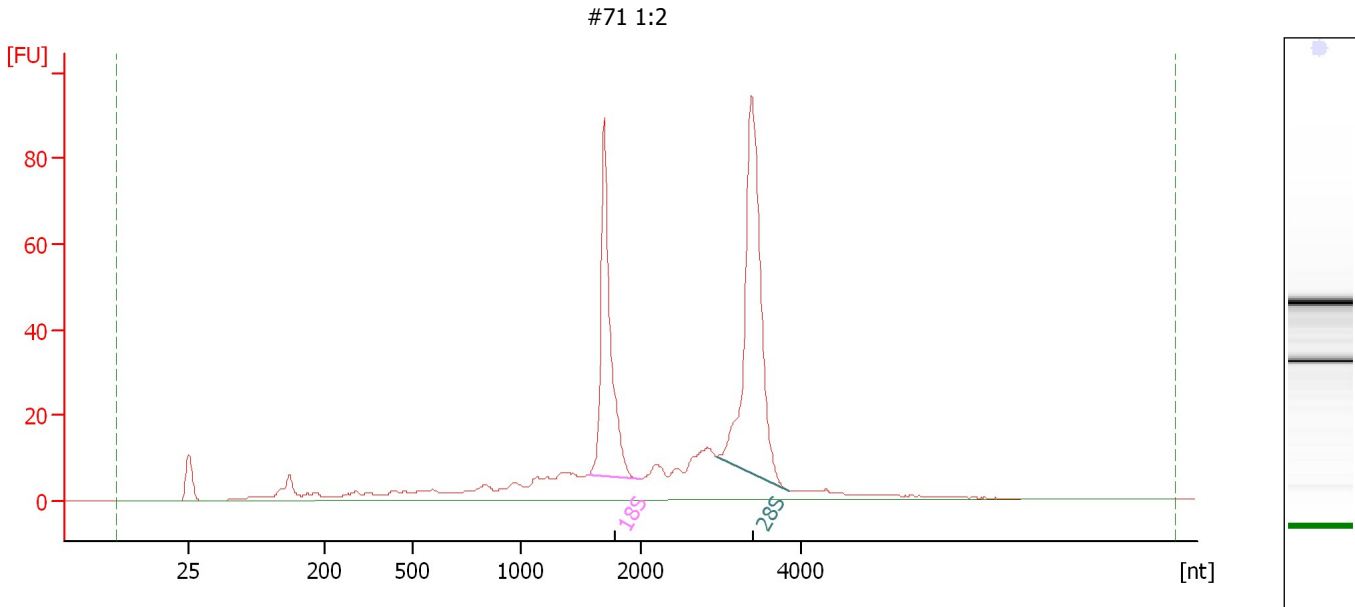
Fragment table for sample 11 : #69 1:3

Name	Start Size [nt]	End Size [nt]	Area	% of total Area
18S	1,505	1,981	113.9	20.6
28S	2,924	3,782	192.3	34.9

Assay Class: Eukaryote Total RNA Nano
Data Path: C:\...ents and Settings\Bioanalyzer\2012-03-13\2012-03-13_005.xad

Created: 3/13/2012 4:48:23 PM
Modified: 3/13/2012 5:12:13 PM

Electropherogram Summary Continued ...



Overall Results for sample 12 : #71 1:2

RNA Area: 531.6 RNA Integrity Number (RIN): 8.6 (B.02.08)
RNA Concentration: 534 ng/μl Result Flagging Color:
rRNA Ratio [28s / 18s]: 1.5 Result Flagging Label: RIN: 8.60

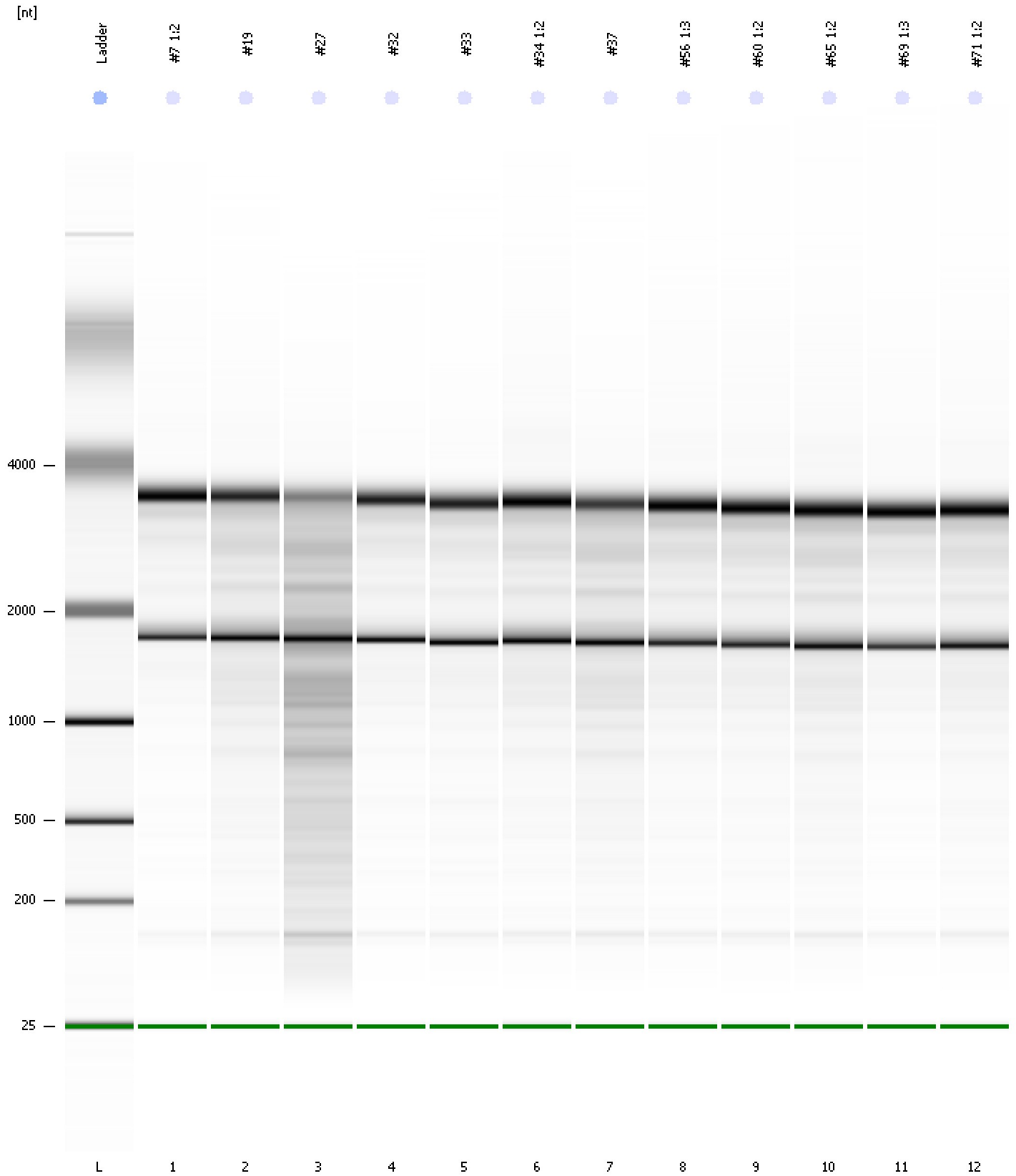
Fragment table for sample 12 : #71 1:2

Name	Start Size [nt]	End Size [nt]	Area	% of total Area
18S	1,565	1,989	101.1	19.0
28S	2,938	3,839	153.5	28.9

Assay Class: Eukaryote Total RNA Nano
Data Path: C:\...ents and Settings\Bioanalyzer\2012-03-13\2012-03-13_005.xad

Created: 3/13/2012 4:48:23 PM
Modified: 3/13/2012 5:12:13 PM

Gel Image



Assay Class: Eukaryote Total RNA Nano
 Data Path: C:\...ents and Settings\Bioanalyzer\2012-03-13\2012-03-13_005.xad

Created: 3/13/2012 4:48:23 PM
 Modified: 3/13/2012 5:12:13 PM

Run Logbook

Description	Number	Source	Category	Sub Category	Time	Time Zone	User	Host
Run ended on port 1 (Number of wells acquired: 13)		Instrument	Run		3/13/2012 5:12:11 PM	(GMT --07:00) Pacific Standard Time	UC Davis	D8XSMGH1
Run started on port 1 (File: C:\Documents and Settings\Bioanalyzer\2012-03-13\2012-03-13_005.xad)		Instrument	Run		3/13/2012 4:48:28 PM	(GMT --07:00) Pacific Standard Time	UC Davis	D8XSMGH1
Product Number : G2938B		Instrument	Run		3/13/2012 4:48:28 PM	(GMT --07:00) Pacific Standard Time	UC Davis	D8XSMGH1
Name :		Instrument	Run		3/13/2012 4:48:28 PM	(GMT --07:00) Pacific Standard Time	UC Davis	D8XSMGH1
Vendor : Agilent Technologies		Instrument	Run		3/13/2012 4:48:28 PM	(GMT --07:00) Pacific Standard Time	UC Davis	D8XSMGH1
Serial# : DE13701086		Instrument	Run		3/13/2012 4:48:28 PM	(GMT --07:00) Pacific Standard Time	UC Davis	D8XSMGH1
Firmware : C.01.069		Instrument	Run		3/13/2012 4:48:28 PM	(GMT --07:00) Pacific Standard Time	UC Davis	D8XSMGH1
Cartridge : Electrode		Instrument	Run		3/13/2012 4:48:28 PM	(GMT --07:00) Pacific Standard Time	UC Davis	D8XSMGH1