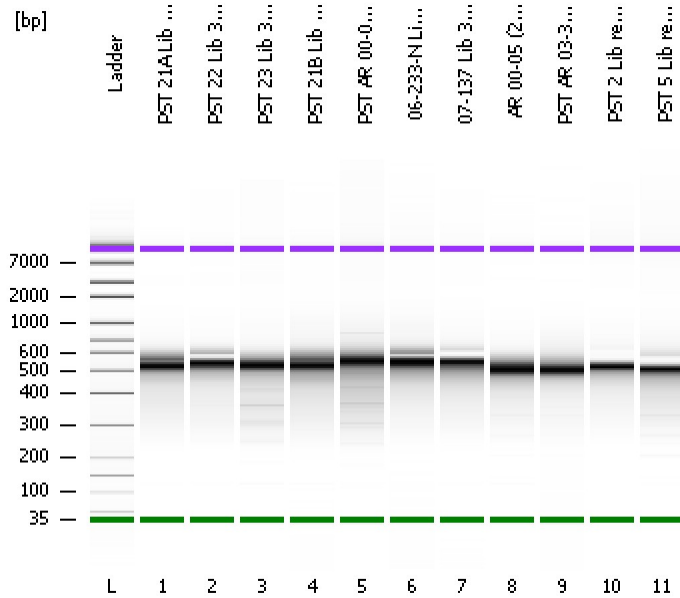


Assay Class: High Sensitivity DNA Assay  
Data Path: C:\...ents and Settings\Bioanalyzer\2012-03-14\2012-03-14\_001.xad

Created: 3/14/2012 10:20:54 AM  
Modified: 3/14/2012 11:08:32 AM

Electrophoresis File Run Summary



Instrument Information:

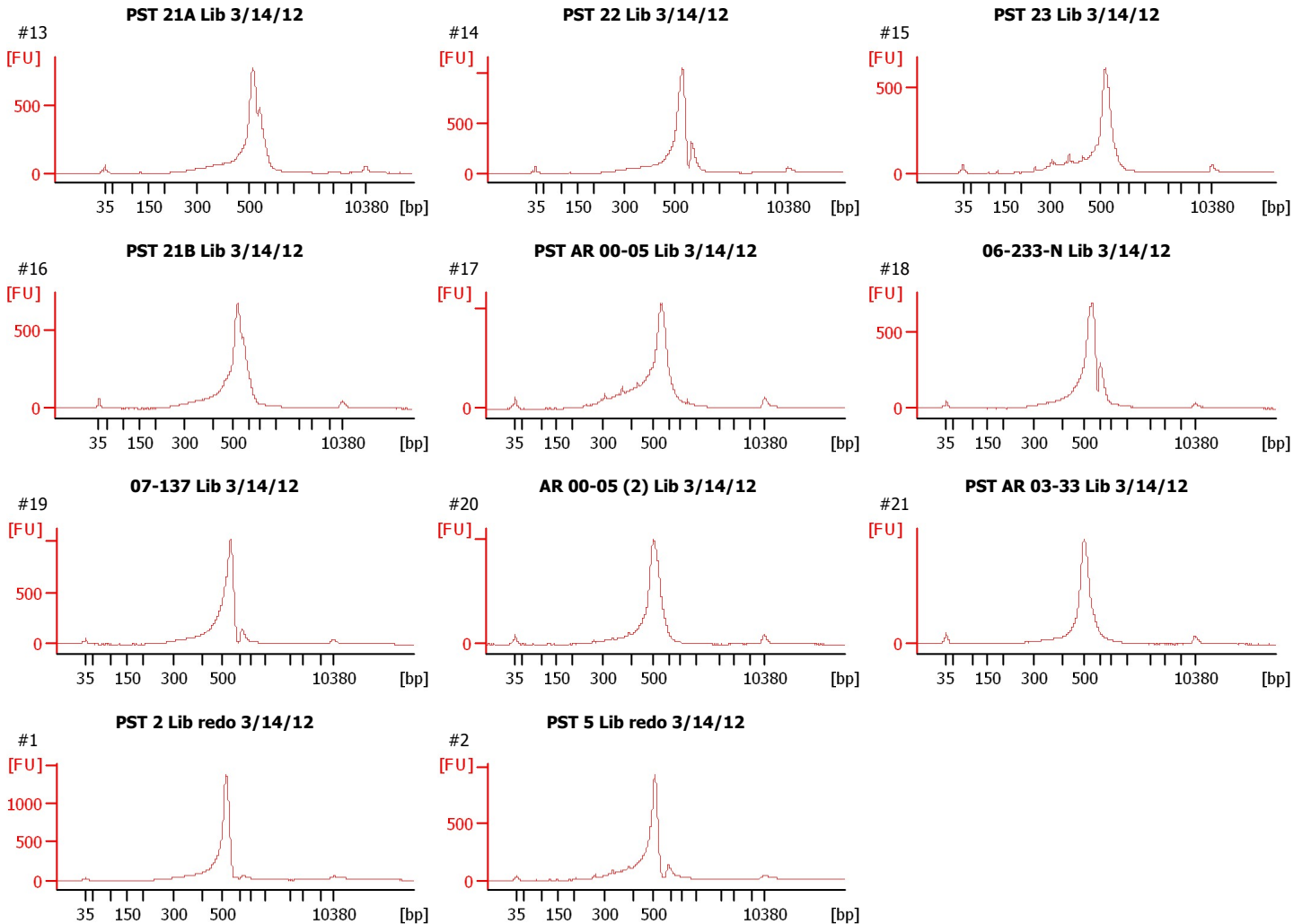
Instrument Name: DE13701086      Firmware: C.01.069  
Serial#: DE13701086      Type: G2938B

Assay Information:

Assay Origin Path: C:\Program Files\Agilent\2100 bioanalyzer\2100 expert\assays\dsDNA\High Sensitivity DNA.xsy  
Assay Class: High Sensitivity DNA Assay  
Version: 1.03  
Assay Comments: Copyright © 2003-2010 Agilent Technologies

Chip Information:

Chip Lot #:   
Reagent Kit Lot #:   
Chip Comments:



Assay Class: High Sensitivity DNA Assay  
Data Path: C:\...ents and Settings\Bioanalyzer\2012-03-14\2012-03-14\_001.xad

Created: 3/14/2012 10:20:54 AM  
Modified: 3/14/2012 11:08:32 AM

**Electrophoresis File Run Summary (Chip Summary)**

Sample Name	Sample Comment	Rest. Digest	Status	Observation	Result Label	Result Color
PST 21A Lib 3/14/12	#13	<input type="checkbox"/>	✓			
PST 22 Lib 3/14/12	#14	<input type="checkbox"/>	✓			
PST 23 Lib 3/14/12	#15	<input type="checkbox"/>	✓			
PST 21B Lib 3/14/12	#16	<input type="checkbox"/>	✓			
PST AR 00-05 Lib 3/14/12	#17	<input type="checkbox"/>	✓			
06-233-N Lib 3/14/12	#18	<input type="checkbox"/>	✓			
07-137 Lib 3/14/12	#19	<input type="checkbox"/>	✓			
AR 00-05 (2) Lib 3/14/12	#20	<input type="checkbox"/>	✓			
PST AR 03-33 Lib 3/14/12	#21	<input type="checkbox"/>	✓			
PST 2 Lib redo 3/14/12	#1	<input type="checkbox"/>	✓			
PST 5 Lib redo 3/14/12	#2	<input type="checkbox"/>	✓			
Ladder		<input type="checkbox"/>	✓			

**Chip Lot #**

**Reagent Kit Lot #**

**Chip Comments :**

Assay Class: High Sensitivity DNA Assay  
Data Path: C:\...ents and Settings\Bioanalyzer\2012-03-14\2012-03-14\_001.xad

Created: 3/14/2012 10:20:54 AM  
Modified: 3/14/2012 11:08:32 AM

**Electrophoresis Assay Details**

**General Analysis Settings**

Number of Available Sample and Ladder Wells (Max.) : 12  
Minimum Visible Range [s] : 32  
Maximum Visible Range [s] : 138  
Start Analysis Time Range [s] : 33  
End Analysis Time Range [s] : 137.5  
Ladder Concentration [pg/μl] : 1950  
Uses Standard Area for Ladder Fragments  
Lower Marker Concentration [pg/μl] : 125  
Upper Marker Concentration [pg/μl] : 75  
Used Upper Marker for Quantitation  
Standard Curve Fit is Point to Point  
Show Data Aligned to Lower and Upper Marker

**Integrator Settings**

Integration Start Time [s] : 33.05  
Integration End Time [s] : 137  
Slope Threshold : 0.8  
Height Threshold [FU] : 5  
Area Threshold : 0.1  
Width Threshold [s] : 0.6  
Baseline Plateau [s] : 0.5

**Filter Settings**

Filter Width [s] : 0.5  
Polynomial Order : 4

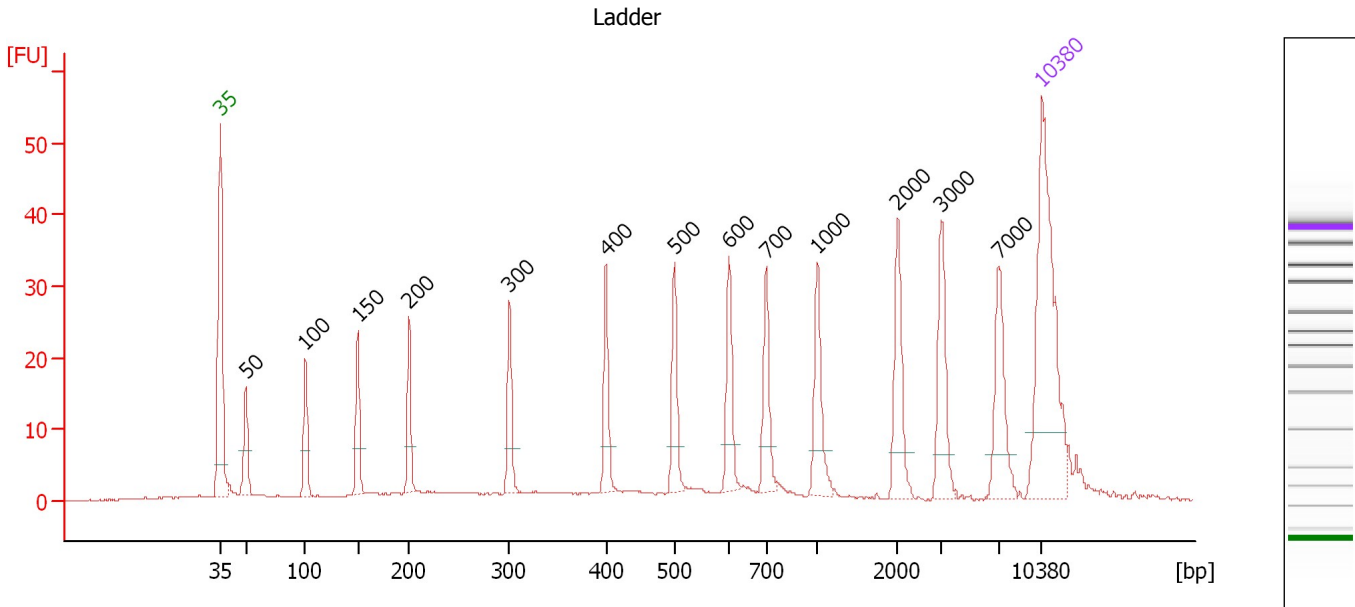
**Ladder**

Ladder Peak	Size	Area
1	35	160
2	50	210
3	100	208
4	150	221
5	200	242
6	300	270
7	400	305
8	500	306
9	600	336
10	700	321
11	1000	366
12	2000	413
13	3000	411
14	7000	400
15	10380	214

Assay Class: High Sensitivity DNA Assay  
 Data Path: C:\...ents and Settings\Bioanalyzer\2012-03-14\2012-03-14\_001.xad

Created: 3/14/2012 10:20:54 AM  
 Modified: 3/14/2012 11:08:32 AM

**Electropherogram Summary**



**Overall Results for Ladder**

Noise: 0.1

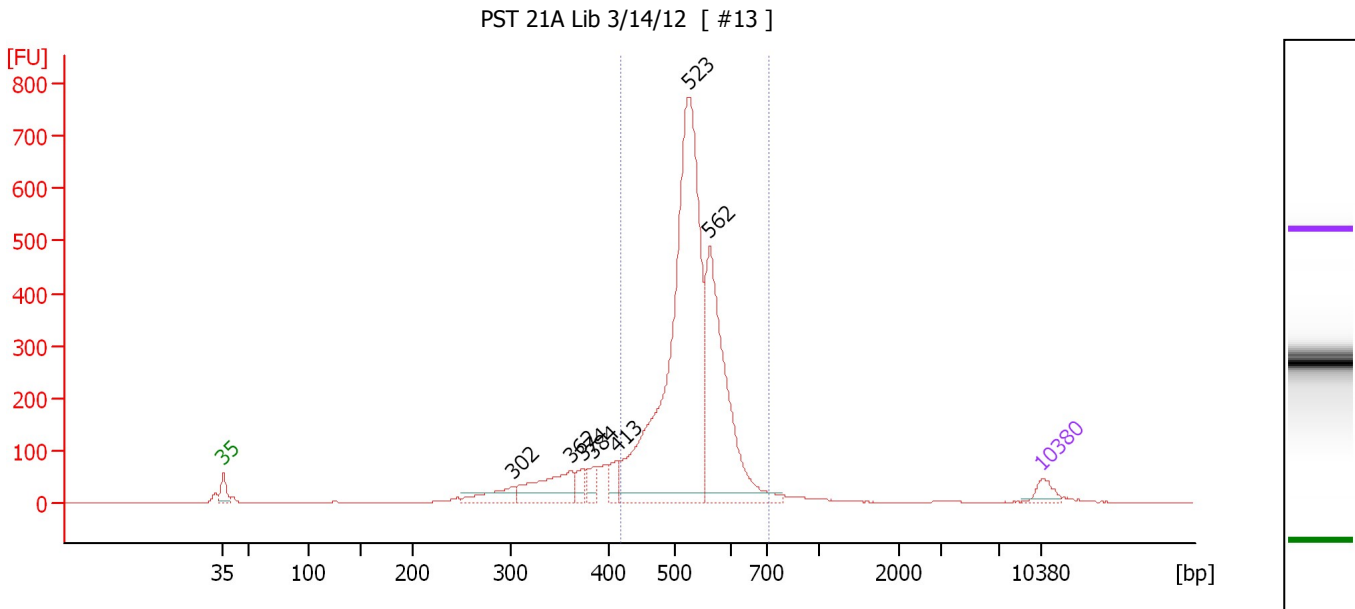
**Peak table for Ladder**

Peak	Size [bp]	Conc. [pg/μl]	Molarity [pmol/l]	Observations
1	35	125.00	5,411.3	Lower Marker
2	50	150.00	4,545.5	Ladder Peak
3	100	150.00	2,272.7	Ladder Peak
4	150	150.00	1,515.2	Ladder Peak
5	200	150.00	1,136.4	Ladder Peak
6	300	150.00	757.6	Ladder Peak
7	400	150.00	568.2	Ladder Peak
8	500	150.00	454.5	Ladder Peak
9	600	150.00	378.8	Ladder Peak
10	700	150.00	324.7	Ladder Peak
11	1,000	150.00	227.3	Ladder Peak
12	2,000	150.00	113.6	Ladder Peak
13	3,000	150.00	75.8	Ladder Peak
14	7,000	150.00	32.5	Ladder Peak
15	10,380	75.00	10.9	Upper Marker

Assay Class: High Sensitivity DNA Assay  
 Data Path: C:\...ents and Settings\Bioanalyzer\2012-03-14\2012-03-14\_001.xad

Created: 3/14/2012 10:20:54 AM  
 Modified: 3/14/2012 11:08:32 AM

**Electropherogram Summary Continued ...**



**Setpoint Deviations for sample 1 : PST 21A Lib 3/14/12**

Height Threshold [FU] : 20

**Overall Results for sample 1 : PST 21A Lib 3/14/12**

Number of peaks found: 7                      Corr. Area 1: 3,988.3  
 Noise: 0.2

**Peak table for sample 1 : PST 21A Lib 3/14/12**

Peak	Size [bp]	Conc. [pg/μl]	Molarity [pmol/l]	Observations
1	35	125.00	5,411.3	Lower Marker
2	302	232.54	1,167.7	
3	362	500.35	2,096.4	
4	374	115.92	469.8	
5	384	121.76	480.0	
6	413	140.68	515.9	
7	523	4,246.25	12,308.0	
8	562	1,728.02	4,661.1	
9	10,380	75.00	10.9	Upper Marker

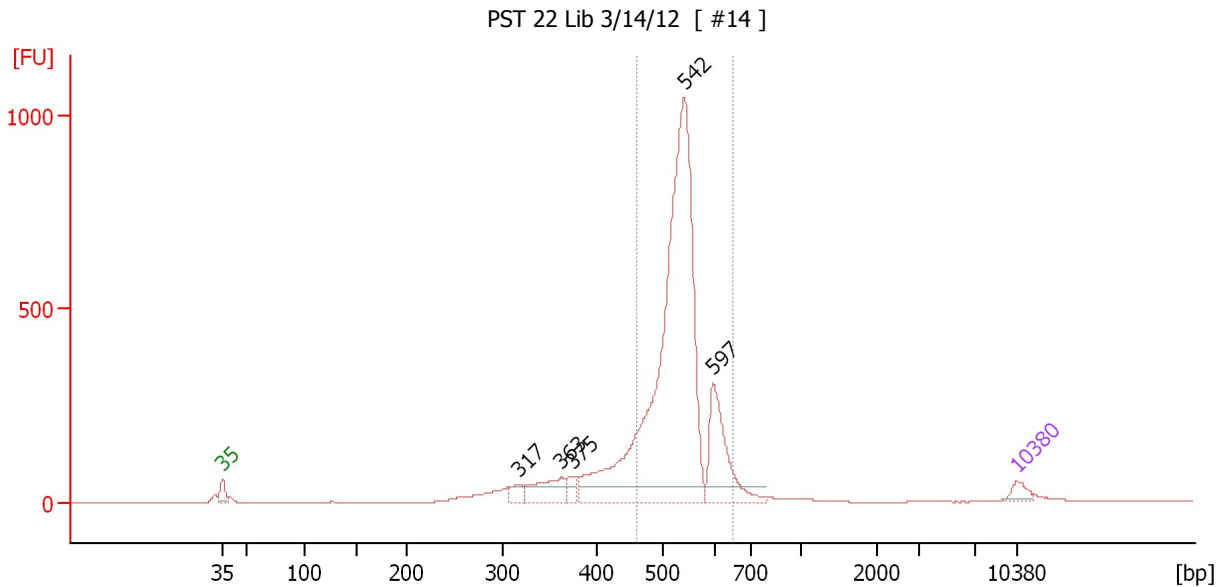
**Region table for sample 1 : PST 21A Lib 3/14/12**

From [bp]	Molarity [pmol/l]	Average Size [bp]	Conc. [pg/μl]	To [bp]	Corr. Area	% of Total	Size distribution in CV [%]	Color
420	17,197.7	530	5,964.07	708	3,988.3	80	9.0	Blue

Assay Class: High Sensitivity DNA Assay  
 Data Path: C:\...ents and Settings\Bioanalyzer\2012-03-14\2012-03-14\_001.xad

Created: 3/14/2012 10:20:54 AM  
 Modified: 3/14/2012 11:08:32 AM

**Electropherogram Summary Continued ...**



**Setpoint Deviations for sample 2 : PST 22 Lib 3/14/12**

Height Threshold [FU] : 40

**Overall Results for sample 2 : PST 22 Lib 3/14/12**

Number of peaks found: 5                      Corr. Area 1: 4,110.4  
 Noise: 0.2

**Peak table for sample 2 : PST 22 Lib 3/14/12**

Peak	Size [bp]	Conc. [pg/μl]	Molarity [pmol/l]	Observations
1	35	125.00	5,411.3	Lower Marker
2	317	135.32	647.7	
3	363	430.86	1,797.6	
4	375	139.82	565.6	
5	542	6,113.07	17,097.7	
6	597	871.48	2,213.1	
7	10,380	75.00	10.9	Upper Marker

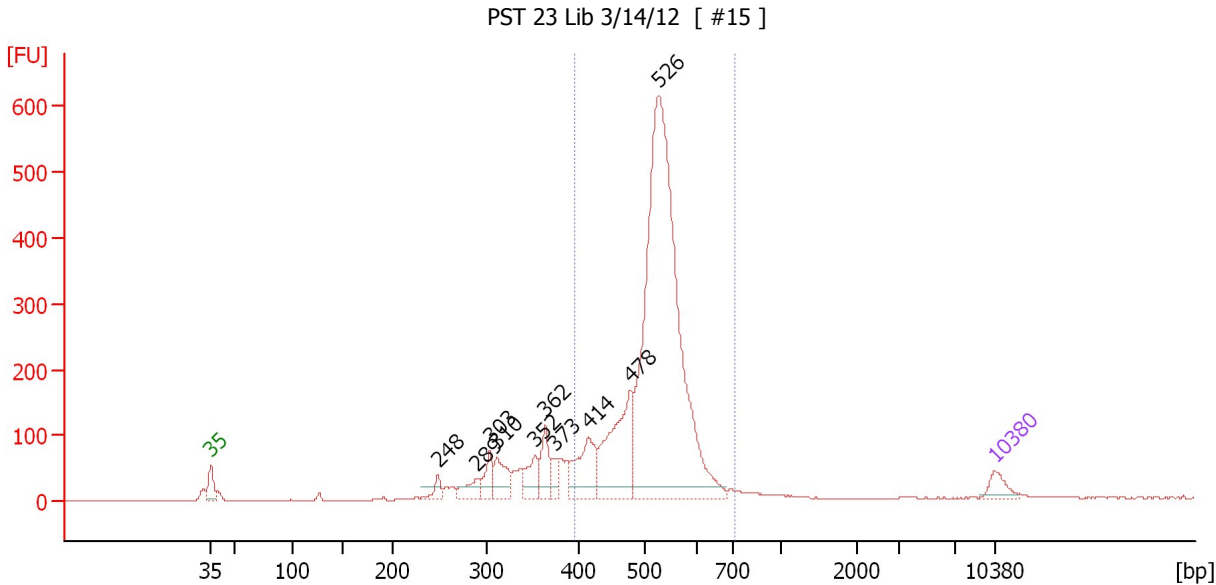
**Region table for sample 2 : PST 22 Lib 3/14/12**

From [bp]	Molarity [pmol/l]	Average Size [bp]	Conc. [pg/μl]	To [bp]	Corr. Area	% of Total	Size distribution in CV [%]	Color
463	17,180.2	537	6,054.00	650	4,110.4	73	7.1	Blue

Assay Class: High Sensitivity DNA Assay  
 Data Path: C:\...ents and Settings\Bioanalyzer\2012-03-14\2012-03-14\_001.xad

Created: 3/14/2012 10:20:54 AM  
 Modified: 3/14/2012 11:08:32 AM

**Electropherogram Summary Continued ...**



**Setpoint Deviations for sample 3 : PST 23 Lib 3/14/12**

Height Threshold [FU] : 20

**Overall Results for sample 3 : PST 23 Lib 3/14/12**

Number of peaks found: 10                      Corr. Area 1: 3,116.1  
 Noise: 0.3

**Peak table for sample 3 : PST 23 Lib 3/14/12**

Peak	Size [bp]	Conc. [pg/μl]	Molarity [pmol/l]	Observations
1	35	125.00	5,411.3	Lower Marker
2	248	83.59	510.7	
3	289	144.93	759.2	
4	303	158.40	792.9	
5	310	222.68	1,087.6	
6	352	186.64	803.6	
7	362	213.82	894.2	
8	373	95.84	389.0	
9	414	399.94	1,464.3	
10	478	757.11	2,401.6	
11	526	3,981.31	11,465.2	
12	10,380	75.00	10.9	Upper Marker

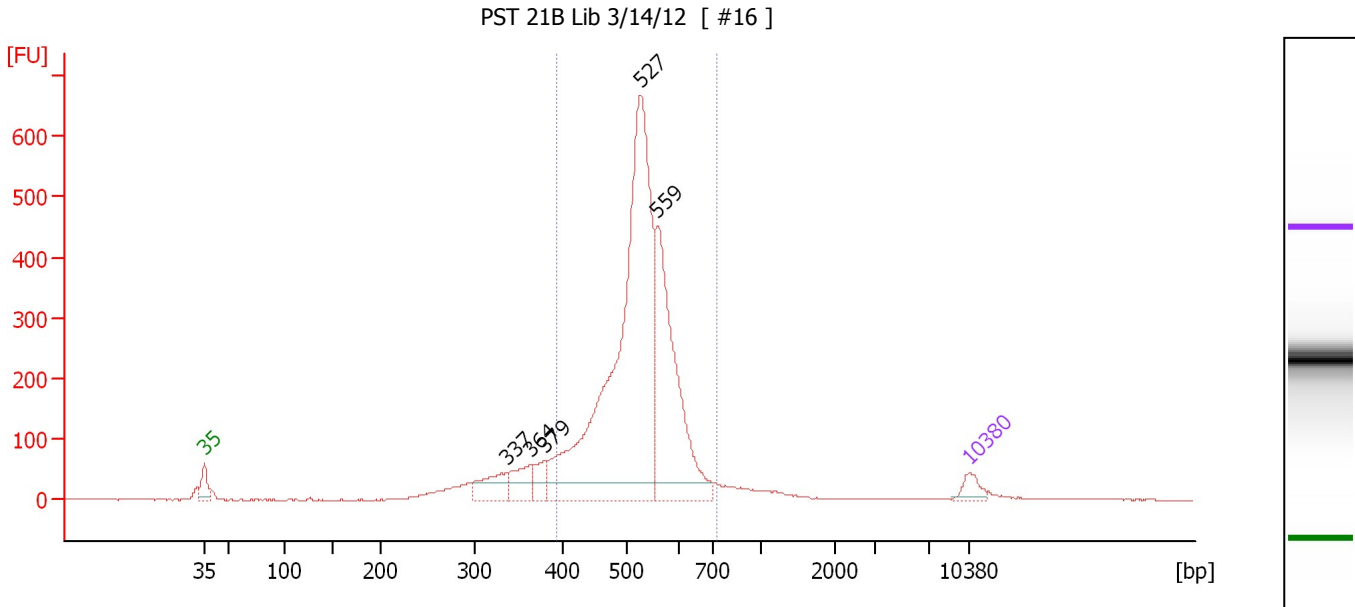
**Region table for sample 3 : PST 23 Lib 3/14/12**

From [bp]	Molarity [pmol/l]	Average Size [bp]	Conc. [pg/μl]	To [bp]	Corr. Area	% of Total	Size distribution in CV [%]	Color
395	14,877.3	520	5,050.38	714	3,116.1	76	9.8	Blue

Assay Class: High Sensitivity DNA Assay  
 Data Path: C:\...ents and Settings\Bioanalyzer\2012-03-14\2012-03-14\_001.xad

Created: 3/14/2012 10:20:54 AM  
 Modified: 3/14/2012 11:08:32 AM

**Electropherogram Summary Continued ...**



**Setpoint Deviations for sample 4 : PST 21B Lib 3/14/12**

Height Threshold [FU] : 30

**Overall Results for sample 4 : PST 21B Lib 3/14/12**

Number of peaks found: 5                      Corr. Area 1: 4,028.6  
 Noise: 0.6

**Peak table for sample 4 : PST 21B Lib 3/14/12**

Peak	Size [bp]	Conc. [pg/μl]	Molarity [pmol/l]	Observations
1	35	125.00	5,411.3	Lower Marker
2	337	265.48	1,193.6	
3	364	236.81	984.9	
4	379	139.01	556.4	
5	527	3,947.34	11,355.3	
6	559	1,510.65	4,094.5	
7	10,380	75.00	10.9	Upper Marker

**Region table for sample 4 : PST 21B Lib 3/14/12**

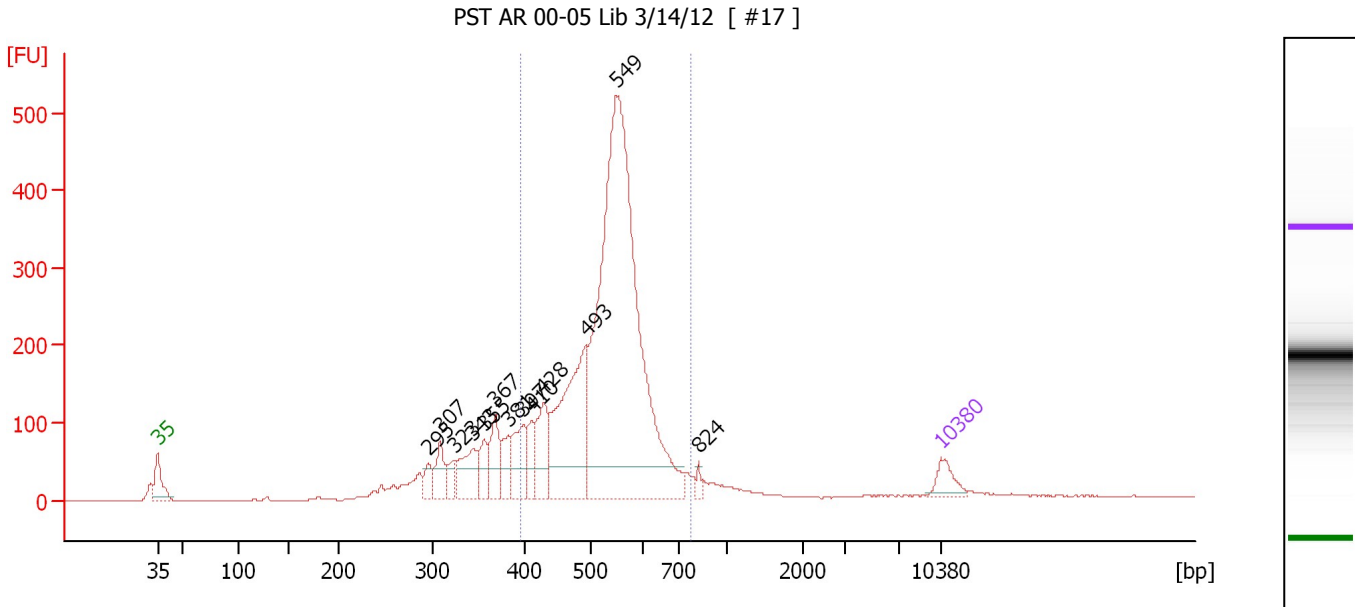
From [bp]	Molarity [pmol/l]	Average Size [bp]	Conc. [pg/μl]	To [bp]	Corr. Area	% of Total	Size distribution in CV [%]	Color
392	15,931.8	526	5,446.78	732	4,028.6	82	11.0	Blue



Assay Class: High Sensitivity DNA Assay  
 Data Path: C:\...ents and Settings\Bioanalyzer\2012-03-14\2012-03-14\_001.xad

Created: 3/14/2012 10:20:54 AM  
 Modified: 3/14/2012 11:08:32 AM

**Electropherogram Summary Continued ...**



**Setpoint Deviations for sample 5 : PST AR 00-05 Lib 3/14/12**

Height Threshold [FU] : 40

**Overall Results for sample 5 : PST AR 00-05 Lib 3/14/12**

Number of peaks found: 13                      Corr. Area 1: 3,337.6  
 Noise: 0.5

**Peak table for sample 5 : PST AR 00-05 Lib 3/14/12**

Peak	Size [bp]	Conc. [pg/μl]	Molarity [pmol/l]	Observations
1	35	125.00	5,411.3	Lower Marker
2	295	81.56	419.6	
3	307	141.55	698.6	
4	323	79.77	374.5	
5	343	217.55	960.0	
6	355	122.84	524.5	
7	367	198.69	820.4	
8	381	123.44	490.3	
9	397	219.41	836.9	
10	410	127.90	472.9	
11	428	250.16	886.1	
12	493	835.76	2,569.4	
13	549	3,070.50	8,480.8	
14	824	26.56	48.8	
15	10,380	75.00	10.9	Upper Marker

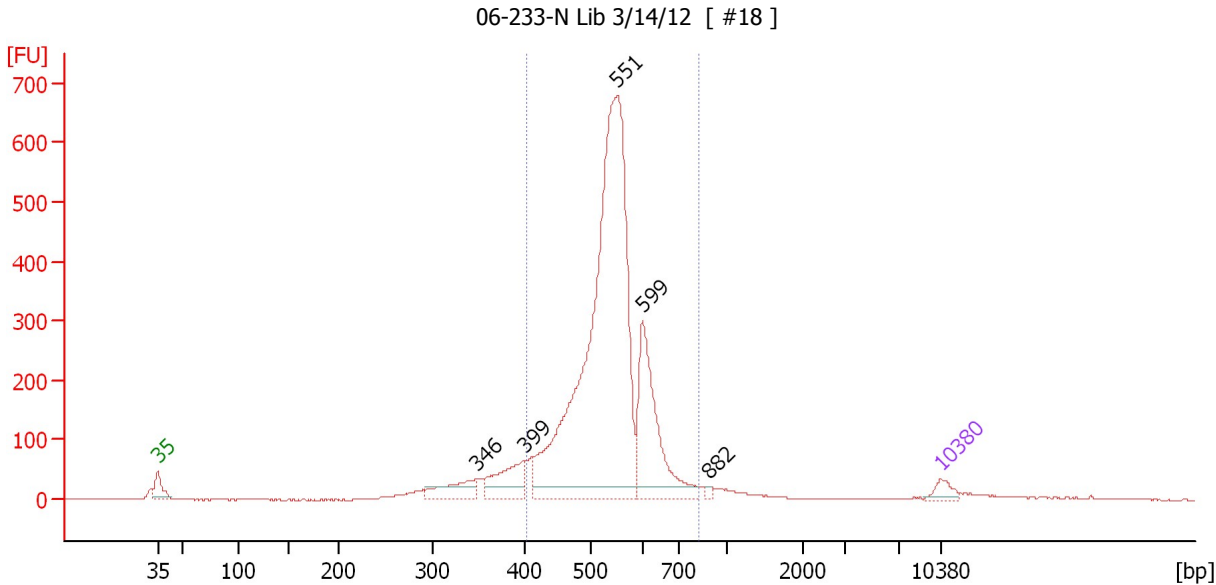
**Region table for sample 5 : PST AR 00-05 Lib 3/14/12**

From [bp]	Molarity [pmol/l]	Average Size [bp]	Conc. [pg/μl]	To [bp]	Corr. Area	% of Total	Size distribution in CV [%]	Color
395	12,699.0	533	4,378.72	778	3,337.6	75	12.4	Blue

Assay Class: High Sensitivity DNA Assay  
 Data Path: C:\...ents and Settings\Bioanalyzer\2012-03-14\2012-03-14\_001.xad

Created: 3/14/2012 10:20:54 AM  
 Modified: 3/14/2012 11:08:32 AM

**Electropherogram Summary Continued ...**



**Setpoint Deviations for sample 6 : 06-233-N Lib 3/14/12**

Height Threshold [FU] : 20

**Overall Results for sample 6 : 06-233-N Lib 3/14/12**

Number of peaks found: 5                      Corr. Area 1: 3,854.0  
 Noise: 0.7

**Peak table for sample 6 : 06-233-N Lib 3/14/12**

Peak	Size [bp]	Conc. [pg/μl]	Molarity [pmol/l]	Observations
1	35	125.00	5,411.3	Lower Marker
2	346	316.65	1,385.9	
3	399	453.22	1,719.4	
4	551	5,687.41	15,641.5	
5	599	1,165.66	2,947.1	
6	882	28.06	48.2	
7	10,380	75.00	10.9	Upper Marker

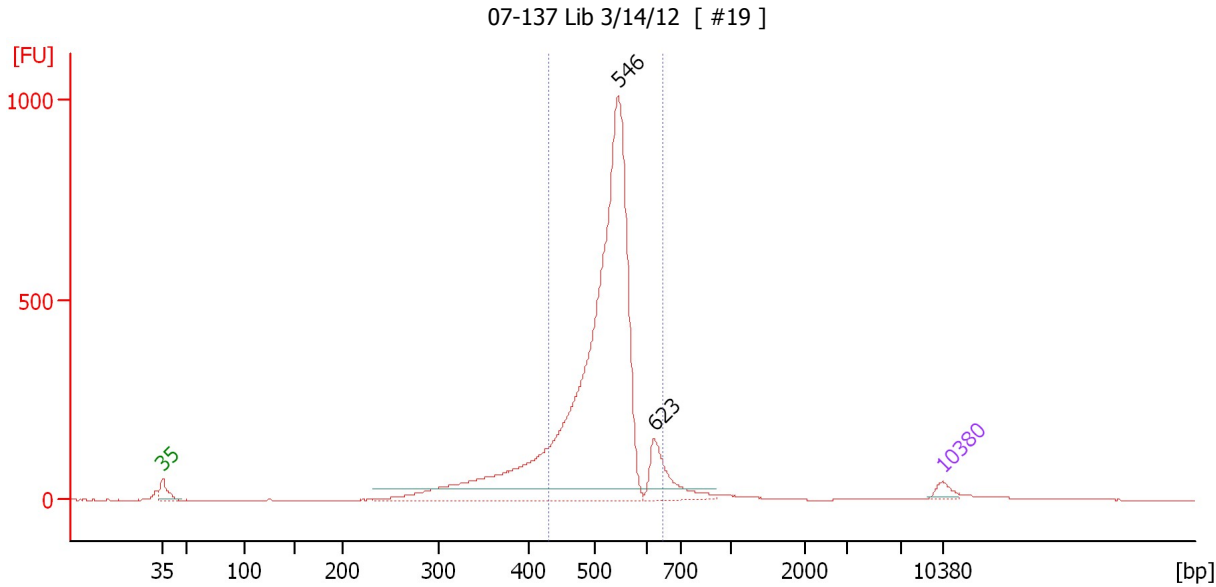
**Region table for sample 6 : 06-233-N Lib 3/14/12**

From [bp]	Molarity [pmol/l]	Average Size [bp]	Conc. [pg/μl]	To [bp]	Corr. Area	% of Total	Size distribution in CV [%]	Color
403	20,438.5	539	7,165.49	823	3,854.0	85	11.3	Blue

Assay Class: High Sensitivity DNA Assay  
 Data Path: C:\...ents and Settings\Bioanalyzer\2012-03-14\2012-03-14\_001.xad

Created: 3/14/2012 10:20:54 AM  
 Modified: 3/14/2012 11:08:32 AM

**Electropherogram Summary Continued ...**



**Setpoint Deviations for sample 7 : 07-137 Lib 3/14/12**

Height Threshold [FU] : 30

**Overall Results for sample 7 : 07-137 Lib 3/14/12**

Number of peaks found: 2                      Corr. Area 1: 4,387.7  
 Noise: 0.3

**Peak table for sample 7 : 07-137 Lib 3/14/12**

Peak	Size [bp]	Conc. [pg/μl]	Molarity [pmol/l]	Observations
1	35	125.00	5,411.3	Lower Marker
2	546	7,768.31	21,557.0	
3	623	540.87	1,315.6	
4	10,380	75.00	10.9	Upper Marker

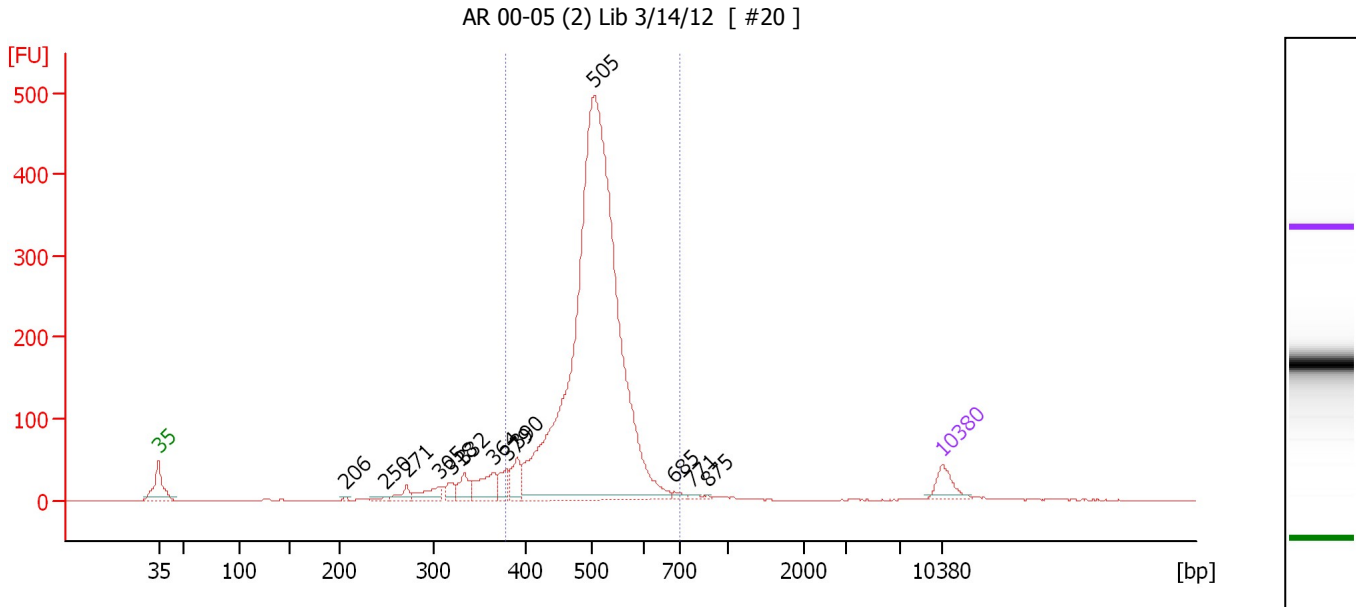
**Region table for sample 7 : 07-137 Lib 3/14/12**

From [bp]	Molarity [pmol/l]	Average Size [bp]	Conc. [pg/μl]	To [bp]	Corr. Area	% of Total	Size distribution in CV [%]	Color
429	20,307.2	525	6,979.66	648	4,387.7	76	8.1	Blue

Assay Class: High Sensitivity DNA Assay  
 Data Path: C:\...ents and Settings\Bioanalyzer\2012-03-14\2012-03-14\_001.xad

Created: 3/14/2012 10:20:54 AM  
 Modified: 3/14/2012 11:08:32 AM

**Electropherogram Summary Continued ...**



**Overall Results for sample 8 : AR 00-05 (2) Lib 3/14/12**

Number of peaks found: 13                      Corr. Area 1: 2,777.7  
 Noise: 0.3

**Peak table for sample 8 : AR 00-05 (2) Lib 3/14/12**

Peak	Size [bp]	Conc. [pg/μl]	Molarity [pmol/l]	Observations
1	35	125.00	5,411.3	Lower Marker
2	206	7.18	52.8	
3	250	15.11	91.7	
4	271	49.92	279.2	
5	305	78.81	391.5	
6	318	48.92	233.1	
7	332	81.92	373.7	
8	364	141.44	588.3	
9	379	77.00	307.8	
10	390	105.22	409.2	
11	505	4,286.86	12,863.0	
12	685	18.18	40.2	
13	771	10.68	21.0	
14	875	4.68	8.1	
15	10,380	75.00	10.9	Upper Marker

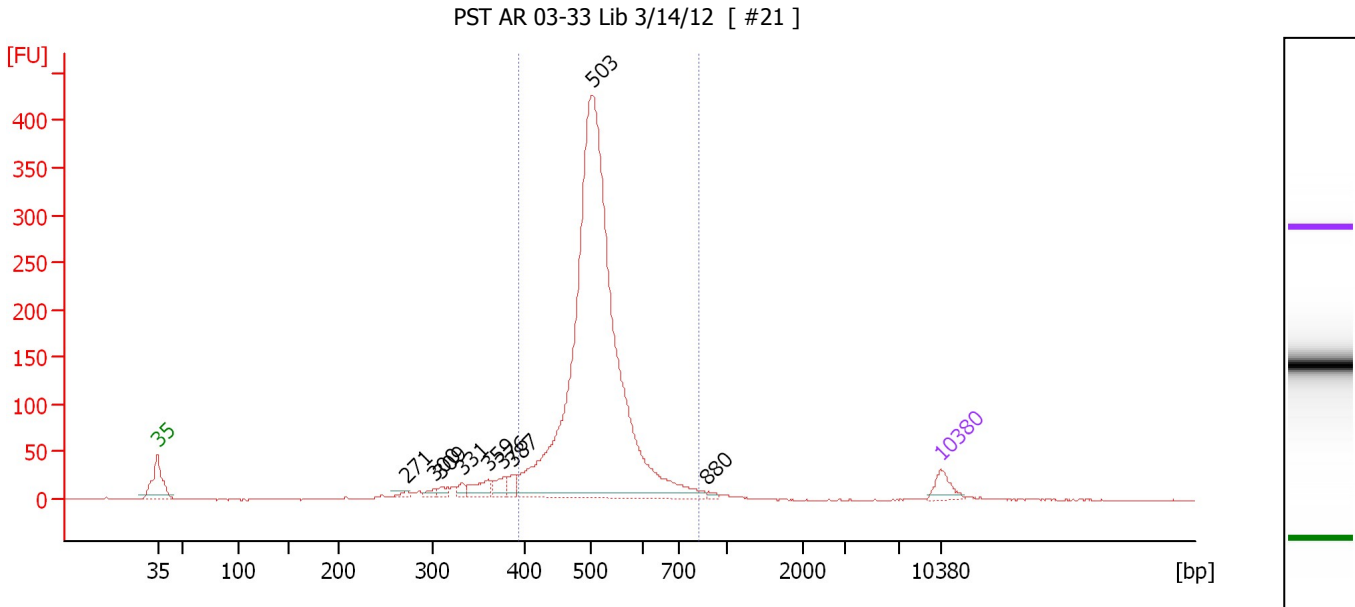
**Region table for sample 8 : AR 00-05 (2) Lib 3/14/12**

From [bp]	Molarity [pmol/l]	Average Size [bp]	Conc. [pg/μl]	To [bp]	Corr. Area	% of Total	Size distribution in CV [%]	Color
376	13,448.1	505	4,427.03	704	2,777.7	88	10.0	Blue

Assay Class: High Sensitivity DNA Assay  
 Data Path: C:\...ents and Settings\Bioanalyzer\2012-03-14\2012-03-14\_001.xad

Created: 3/14/2012 10:20:54 AM  
 Modified: 3/14/2012 11:08:32 AM

**Electropherogram Summary Continued ...**



**Overall Results for sample 9 : PST AR 03-33 Lib 3/14/12**

Number of peaks found: 9                      Corr. Area 1: 2,126.6  
 Noise: 0.3

**Peak table for sample 9 : PST AR 03-33 Lib 3/14/12**

Peak	Size [bp]	Conc. [pg/μl]	Molarity [pmol/l]	Observations
1	35	125.00	5,411.3	Lower Marker
2	271	18.16	101.4	
3	300	30.78	155.2	
4	309	31.02	152.3	
5	331	43.90	200.7	
6	359	99.69	420.5	
7	376	74.98	302.2	
8	387	60.07	235.2	
9	503	4,769.78	14,370.4	
10	880	15.16	26.1	
11	10,380	75.00	10.9	Upper Marker

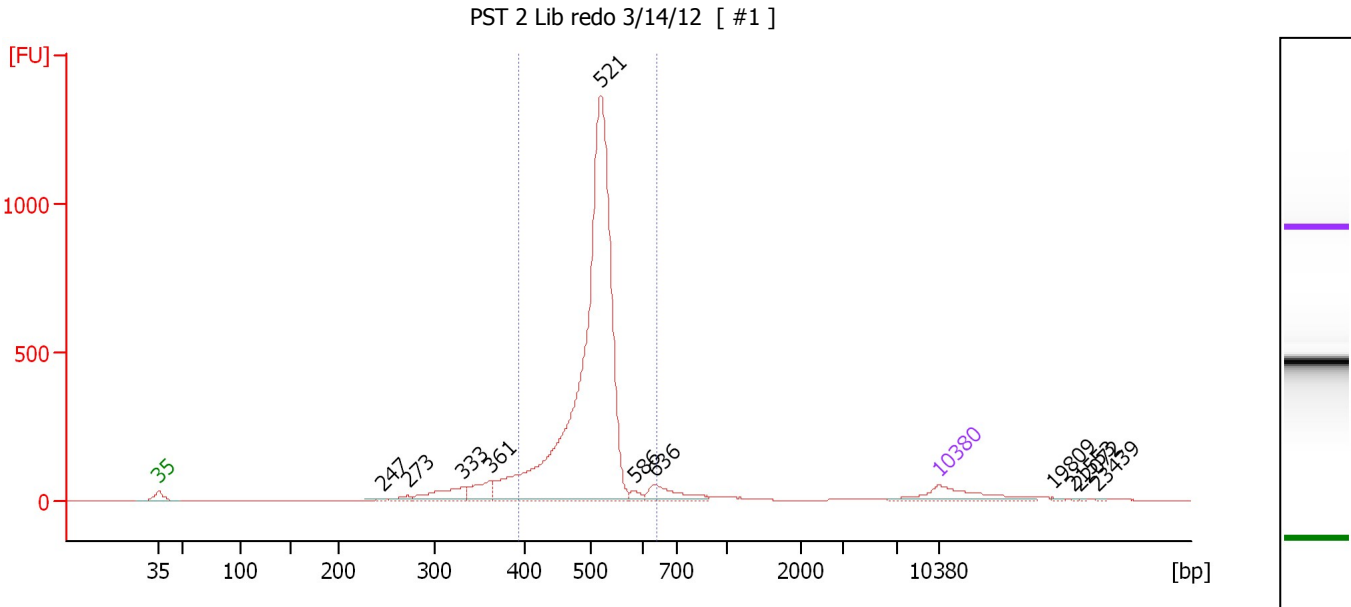
**Region table for sample 9 : PST AR 03-33 Lib 3/14/12**

From [bp]	Molarity [pmol/l]	Average Size [bp]	Conc. [pg/μl]	To [bp]	Corr. Area	% of Total	Size distribution in CV [%]	Color
392	14,175.8	514	4,749.76	829	2,126.6	88	11.1	Blue

Assay Class: High Sensitivity DNA Assay  
 Data Path: C:\...ents and Settings\Bioanalyzer\2012-03-14\2012-03-14\_001.xad

Created: 3/14/2012 10:20:54 AM  
 Modified: 3/14/2012 11:08:32 AM

**Electropherogram Summary Continued ...**



**Overall Results for sample 10 : PST 2 Lib redo 3/14/12**

Number of peaks found: 11                      Corr. Area 1: 4,783.7  
 Noise: 0.3

**Peak table for sample 10 : PST 2 Lib redo 3/14/12**

Peak	Size [bp]	Conc. [pg/μl]	Molarity [pmol/l]	Observations
1	35	125.00	5,411.3	Lower Marker
2	247	8.15	50.1	
3	273	19.92	110.5	
4	333	99.05	451.1	
5	361	75.56	316.8	
6	521	2,046.70	5,955.7	
7	586	15.38	39.7	
8	636	73.77	175.9	
9	10,380	75.00	10.9	Upper Marker
10	19,809	0.00	0.0	
11	21,553	0.00	0.0	
12	22,072	0.00	0.0	
13	23,439	0.00	0.0	

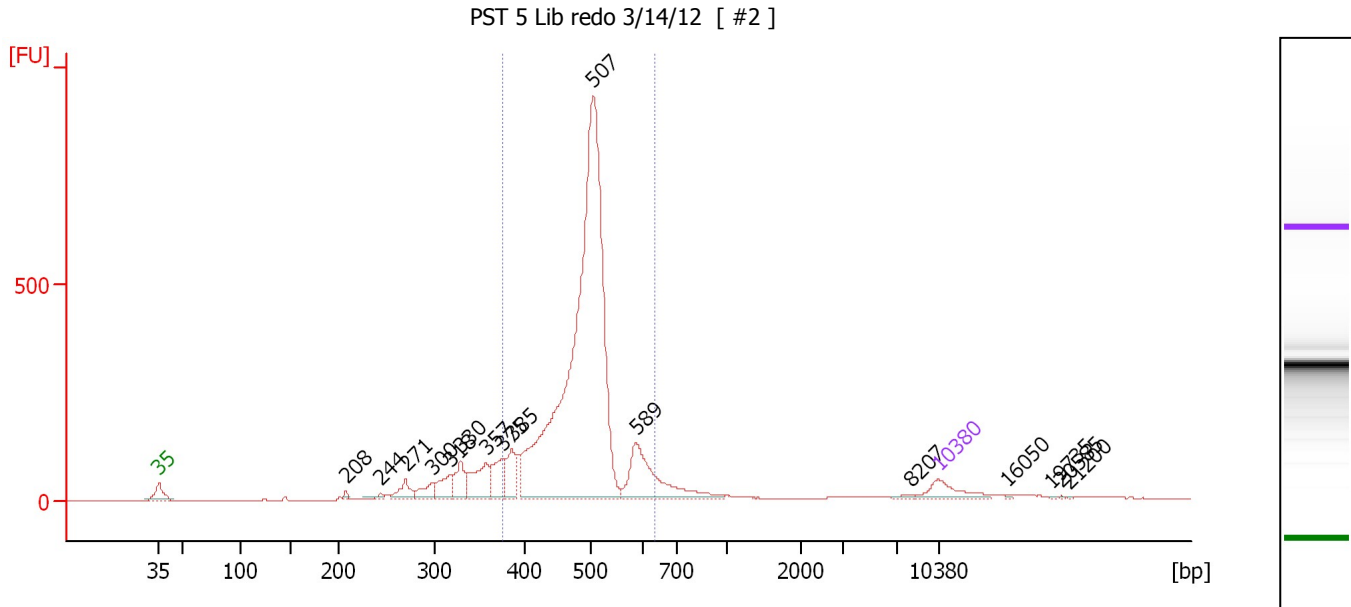
**Region table for sample 10 : PST 2 Lib redo 3/14/12**

From [bp]	Molarity [pmol/l]	Average Size [bp]	Conc. [pg/μl]	To [bp]	Corr. Area	% of Total	Size distribution in CV [%]	Color
394	6,153.3	505	2,034.85	643	4,783.7	83	7.8	Blue

Assay Class: High Sensitivity DNA Assay  
 Data Path: C:\...ents and Settings\Bioanalyzer\2012-03-14\2012-03-14\_001.xad

Created: 3/14/2012 10:20:54 AM  
 Modified: 3/14/2012 11:08:32 AM

**Electropherogram Summary Continued ...**



**Overall Results for sample 11 : PST 5 Lib redo 3/14/12**

Number of peaks found: 16                      Corr. Area 1: 3,949.1  
 Noise: 0.4

**Peak table for sample 11 : PST 5 Lib redo 3/14/12**

Peak	Size [bp]	Conc. [pg/μl]	Molarity [pmol/l]	Observations
1	35	125.00	5,411.3	Lower Marker
2	208	14.59	106.6	
3	244	16.53	102.6	
4	271	74.53	417.1	
5	300	78.61	397.5	
6	318	100.36	477.6	
7	330	104.70	481.2	
8	357	186.87	792.7	
9	375	127.61	515.2	
10	385	125.60	493.9	
11	507	3,043.05	9,091.0	
12	589	342.25	881.1	
13	8,207	8.16	1.5	
14	10,380	75.00	10.9	Upper Marker
15	16,050	0.00	0.0	
16	19,735	0.00	0.0	
17	20,585	0.00	0.0	
18	21,200	0.00	0.0	

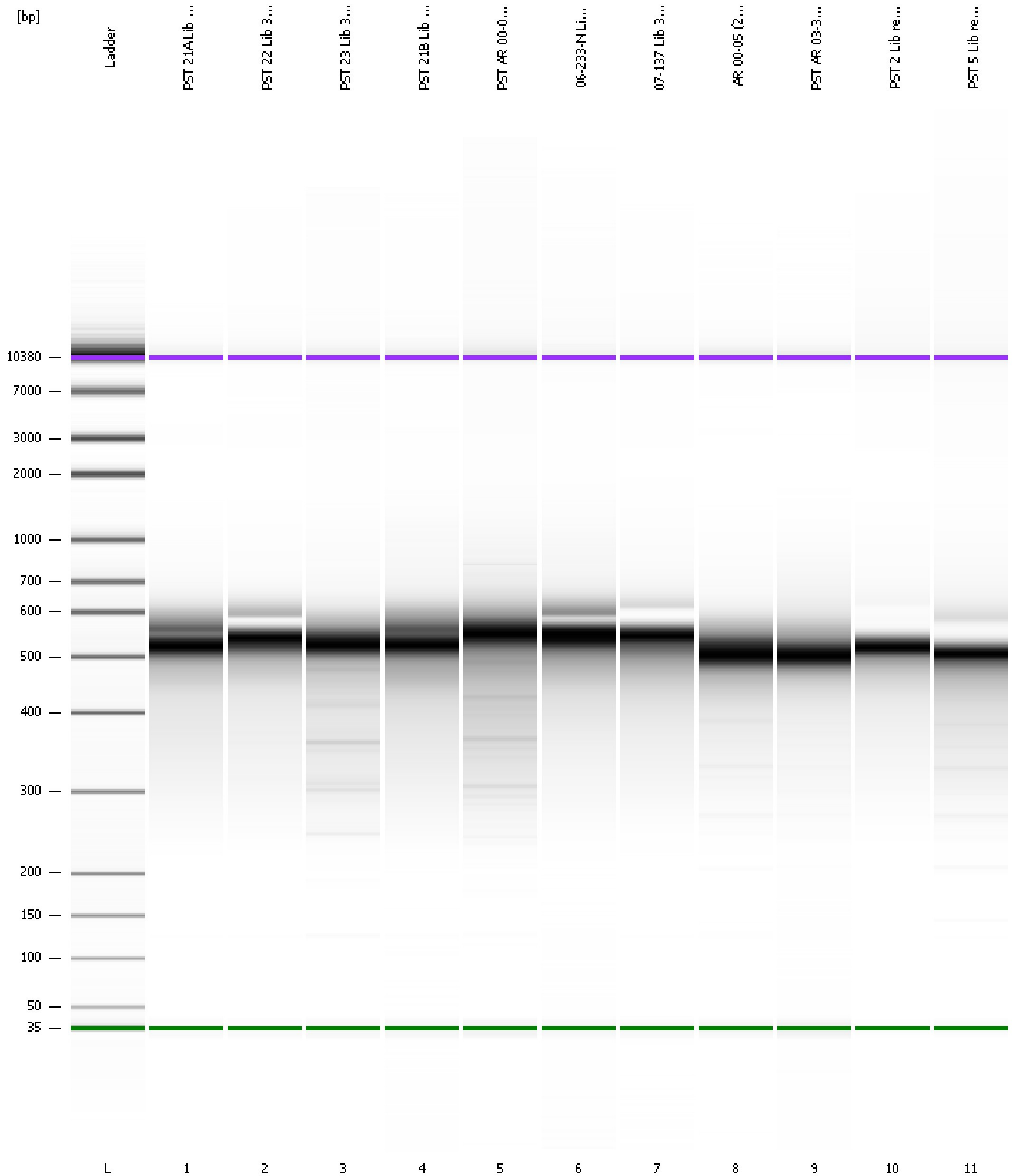
**Region table for sample 11 : PST 5 Lib redo 3/14/12**

From [bp]	Molarity [pmol/l]	Average Size [bp]	Conc. [pg/μl]	To [bp]	Corr. Area	% of Total	Size distribution in CV [%]	Color
376	11,080.1	489	3,534.57	635	3,949.1	78	10.2	Blue

Assay Class: High Sensitivity DNA Assay  
Data Path: C:\...ents and Settings\Bioanalyzer\2012-03-14\2012-03-14\_001.xad

Created: 3/14/2012 10:20:54 AM  
Modified: 3/14/2012 11:08:32 AM

**Gel Image**





Assay Class: High Sensitivity DNA Assay  
 Data Path: C:\...ents and Settings\Bioanalyzer\2012-03-14\2012-03-14\_001.xad

Created: 3/14/2012 10:20:54 AM  
 Modified: 3/14/2012 11:08:32 AM

**Run Logbook**

Description	Number	Source	Category	Sub Category	Time	Time Zone	User	Host
Run ended on port 1 (Number of wells acquired: 12)		Instrument	Run		3/14/2012 10:56:05 AM	(GMT --07:00) Pacific Standard Time	UC Davis	D8XSMGH1
Run started on port 1 (File: C:\Documents and Settings\Bioanalyzer\2012-03-14\2012-03-14_001.xad)		Instrument	Run		3/14/2012 10:20:59 AM	(GMT --07:00) Pacific Standard Time	UC Davis	D8XSMGH1
Product Number : G2938B		Instrument	Run		3/14/2012 10:20:59 AM	(GMT --07:00) Pacific Standard Time	UC Davis	D8XSMGH1
Name :		Instrument	Run		3/14/2012 10:20:59 AM	(GMT --07:00) Pacific Standard Time	UC Davis	D8XSMGH1
Vendor : Agilent Technologies		Instrument	Run		3/14/2012 10:20:59 AM	(GMT --07:00) Pacific Standard Time	UC Davis	D8XSMGH1
Serial# : DE13701086		Instrument	Run		3/14/2012 10:20:59 AM	(GMT --07:00) Pacific Standard Time	UC Davis	D8XSMGH1
Firmware : C.01.069		Instrument	Run		3/14/2012 10:20:59 AM	(GMT --07:00) Pacific Standard Time	UC Davis	D8XSMGH1
Cartridge : Electrode		Instrument	Run		3/14/2012 10:20:59 AM	(GMT --07:00) Pacific Standard Time	UC Davis	D8XSMGH1