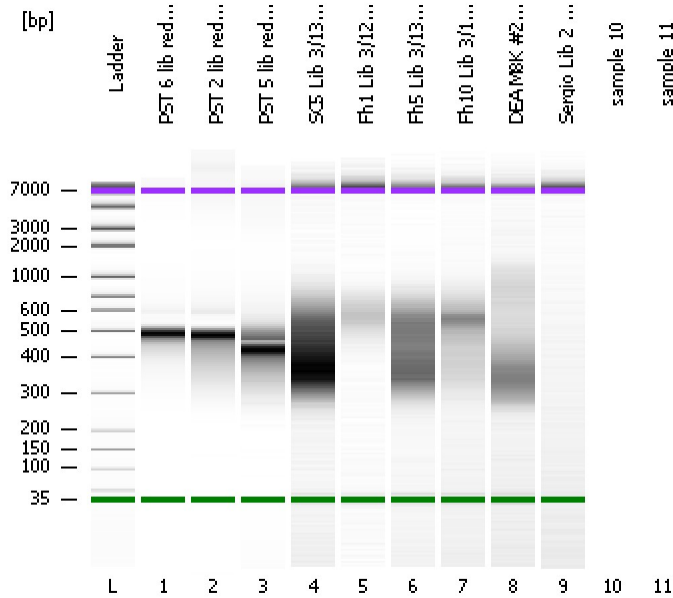


Assay Class: High Sensitivity DNA Assay
Data Path: C:\...ents and Settings\Bioanalyzer\2012-03-14\2012-03-14_002.xad

Created: 3/14/2012 11:09:43 AM
Modified: 3/14/2012 11:53:11 AM

Electrophoresis File Run Summary



Instrument Information:

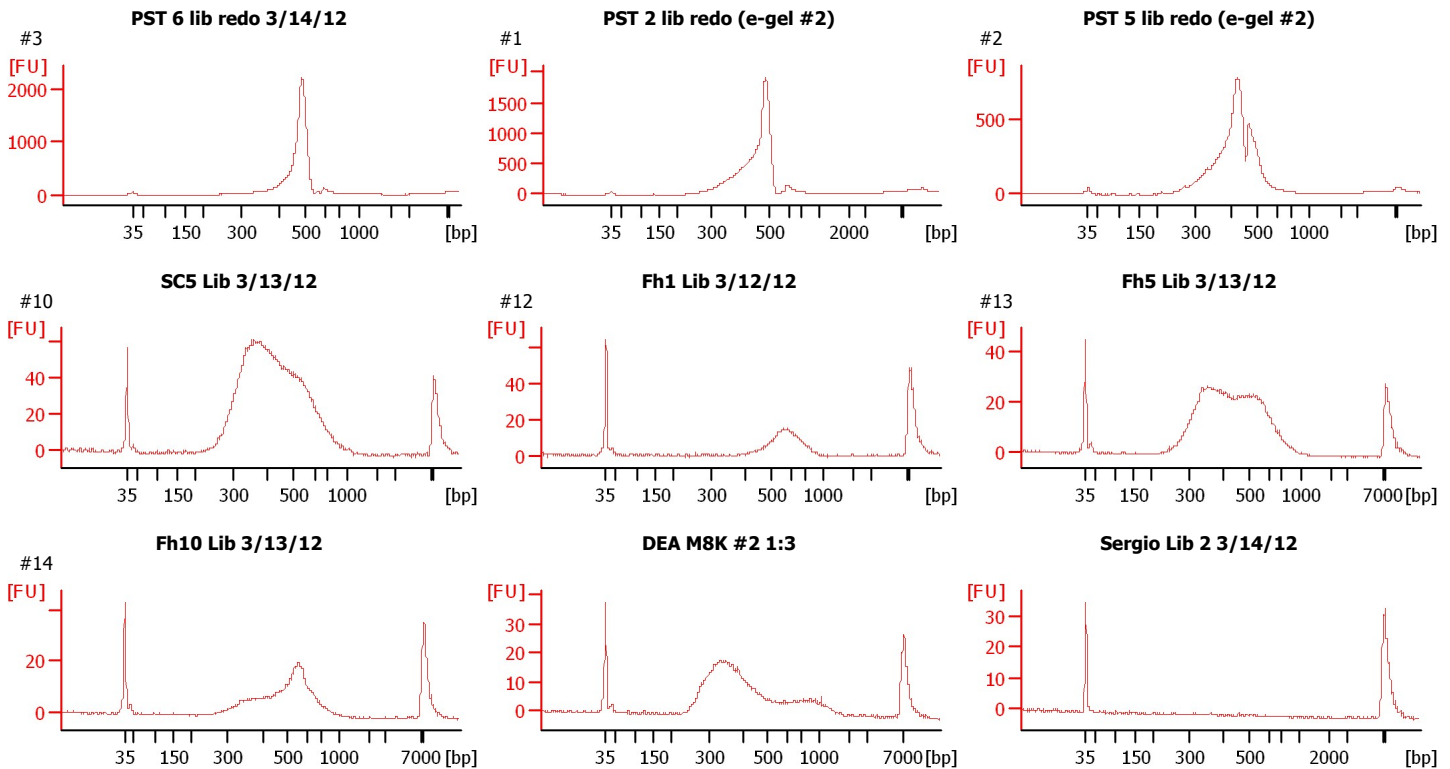
Instrument Name: DE13701086 Firmware: C.01.069
Serial#: DE13701086 Type: G2938B

Assay Information:

Assay Origin Path: C:\Program Files\Agilent\2100 bioanalyzer\2100 expert\assays\dsDNA\High Sensitivity DNA.xsy
Assay Class: High Sensitivity DNA Assay
Version: 1.03
Assay Comments: Copyright © 2003-2010 Agilent Technologies

Chip Information:

Chip Lot #:
Reagent Kit Lot #:
Chip Comments:



Assay Class: High Sensitivity DNA Assay
Data Path: C:\...ents and Settings\Bioanalyzer\2012-03-14\2012-03-14_002.xad

Created: 3/14/2012 11:09:43 AM
Modified: 3/14/2012 11:53:11 AM

Electrophoresis File Run Summary (Chip Summary)

Sample Name	Sample Comment	Rest. Digest	Status	Observation	Result Label	Result Color
PST 6 lib redo 3/14/12	#3	<input type="checkbox"/>	✓			
PST 2 lib redo (e-gel #2)	#1	<input type="checkbox"/>	✓			
PST 5 lib redo (e-gel #2)	#2	<input type="checkbox"/>	✓			
SC5 Lib 3/13/12	#10	<input type="checkbox"/>	✓			
Fh1 Lib 3/12/12	#12	<input type="checkbox"/>	✓			
Fh5 Lib 3/13/12	#13	<input type="checkbox"/>	✓			
Fh10 Lib 3/13/12	#14	<input type="checkbox"/>	✓			
DEA M8K #2 1:3		<input type="checkbox"/>	✓			
Sergio Lib 2 3/14/12		<input type="checkbox"/>	✓			
sample 10		<input type="checkbox"/>				
sample 11		<input type="checkbox"/>				
Ladder		<input type="checkbox"/>	✓			

Chip Lot #

Reagent Kit Lot #

Chip Comments :

Assay Class: High Sensitivity DNA Assay
Data Path: C:\...ents and Settings\Bioanalyzer\2012-03-14\2012-03-14_002.xad

Created: 3/14/2012 11:09:43 AM
Modified: 3/14/2012 11:53:11 AM

Electrophoresis Assay Details

General Analysis Settings

Number of Available Sample and Ladder Wells (Max.) : 12
Minimum Visible Range [s] : 32
Maximum Visible Range [s] : 138
Start Analysis Time Range [s] : 33
End Analysis Time Range [s] : 137.5
Ladder Concentration [pg/μl] : 1950
Uses Standard Area for Ladder Fragments
Lower Marker Concentration [pg/μl] : 125
Upper Marker Concentration [pg/μl] : 75
Used Upper Marker for Quantitation
Standard Curve Fit is Point to Point
Show Data Aligned to Lower and Upper Marker

Integrator Settings

Integration Start Time [s] : 33.05
Integration End Time [s] : 137
Slope Threshold : 0.8
Height Threshold [FU] : 5
Area Threshold : 0.1
Width Threshold [s] : 0.6
Baseline Plateau [s] : 0.5

Filter Settings

Filter Width [s] : 0.5
Polynomial Order : 4

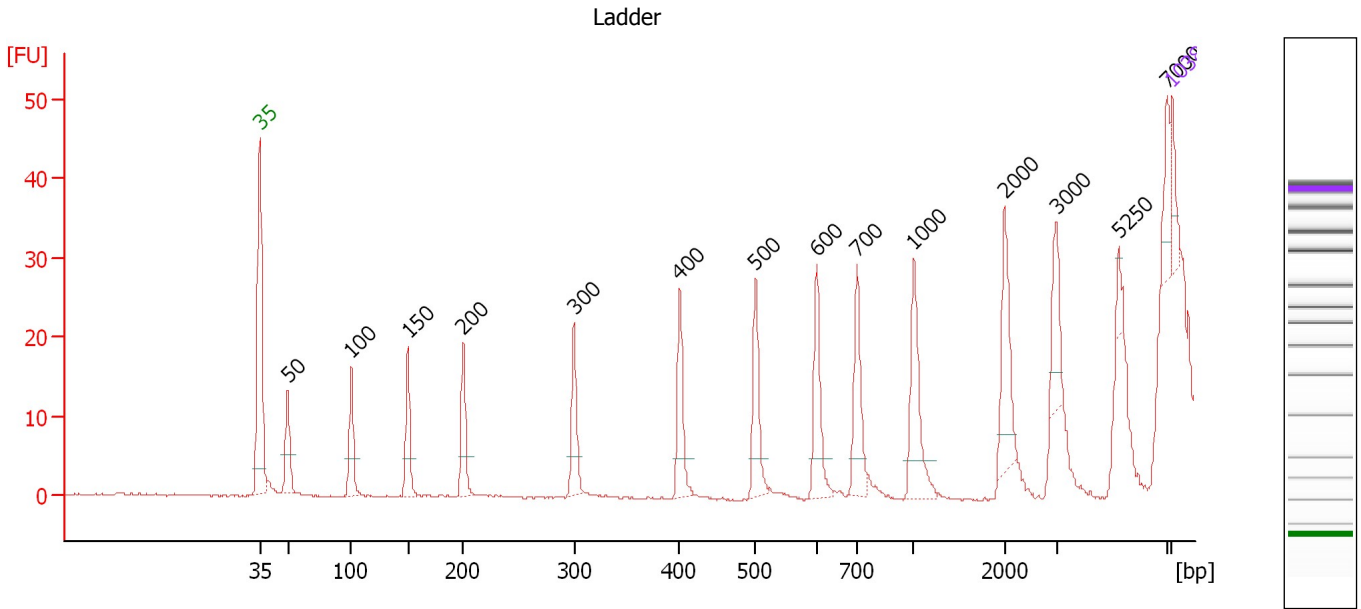
Ladder

Ladder Peak	Size	Area
1	35	160
2	50	210
3	100	208
4	150	221
5	200	242
6	300	270
7	400	305
8	500	306
9	600	336
10	700	321
11	1000	366
12	2000	413
13	3000	411
14	7000	400
15	10380	214

Assay Class: High Sensitivity DNA Assay
 Data Path: C:\...ents and Settings\Bioanalyzer\2012-03-14\2012-03-14_002.xad

Created: 3/14/2012 11:09:43 AM
 Modified: 3/14/2012 11:53:11 AM

Electropherogram Summary



Overall Results for Ladder

Noise: 0.1

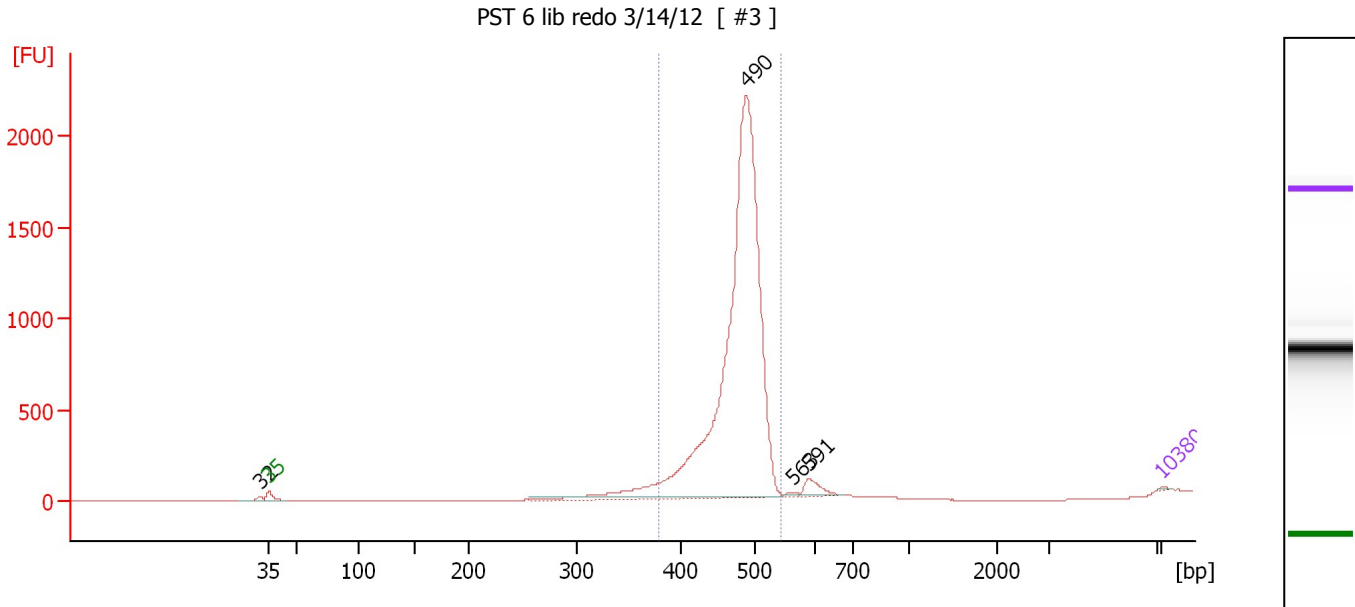
Peak table for Ladder

Peak	Size [bp]	Conc. [pg/µl]	Molarity [pmol/l]	Observations
1	35	125.00	5,411.3	Lower Marker
2	50	150.00	4,545.5	Ladder Peak
3	100	150.00	2,272.7	Ladder Peak
4	150	150.00	1,515.2	Ladder Peak
5	200	150.00	1,136.4	Ladder Peak
6	300	150.00	757.6	Ladder Peak
7	400	150.00	568.2	Ladder Peak
8	500	150.00	454.5	Ladder Peak
9	600	150.00	378.8	Ladder Peak
10	700	150.00	324.7	Ladder Peak
11	1,000	150.00	227.3	Ladder Peak
12	2,000	150.00	113.6	Ladder Peak
13	3,000	150.00	75.8	Ladder Peak
14	5,250	0.00	0.0	
15	7,000	150.00	32.5	Ladder Peak
16	10,380	75.00	10.9	Upper Marker

Assay Class: High Sensitivity DNA Assay
 Data Path: C:\...ents and Settings\Bioanalyzer\2012-03-14\2012-03-14_002.xad

Created: 3/14/2012 11:09:43 AM
 Modified: 3/14/2012 11:53:11 AM

Electropherogram Summary Continued ...



Overall Results for sample 1 : PST 6 lib redo 3/14/12

Number of peaks found: 4 Corr. Area 1: 7,934.5
 Noise: 0.2

Peak table for sample 1 : PST 6 lib redo 3/14/12

Peak	Size [bp]	Conc. [pg/μl]	Molarity [pmol/l]	Observations
1	32	0.00	0.0	
2	35	125.00	5,411.3	Lower Marker
3	490	80,847.99	250,095.2	
4	563	229.30	617.2	
5	591	1,427.93	3,660.8	
6	10,380	75.00	10.9	Upper Marker

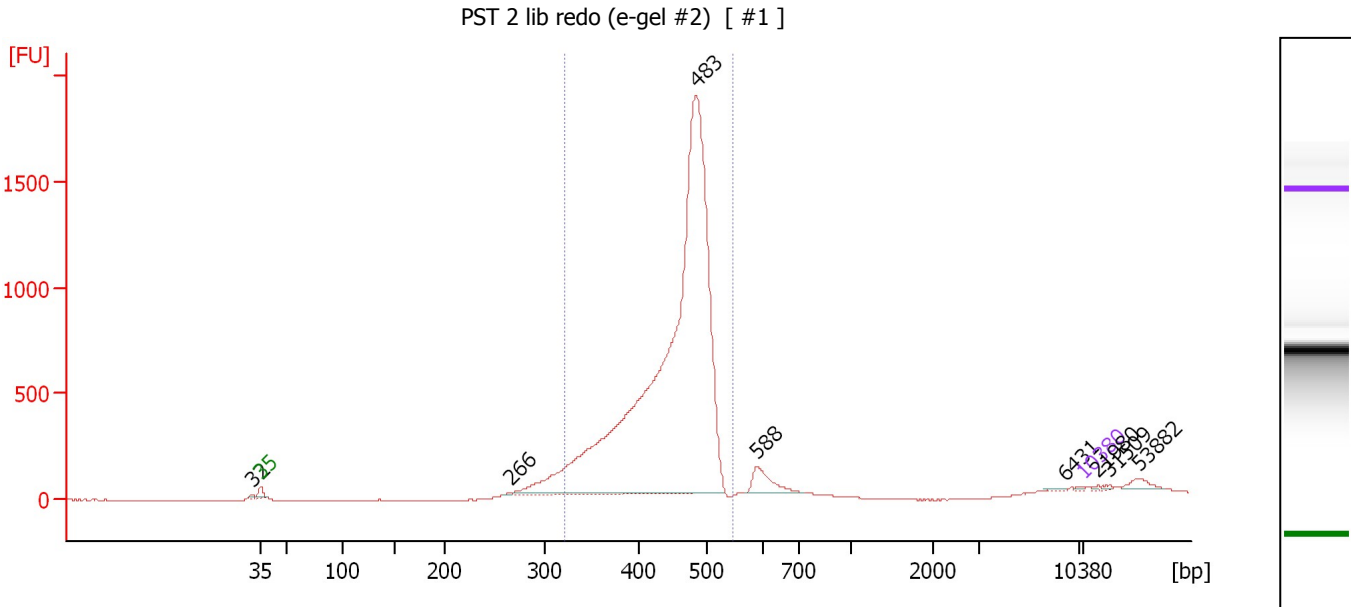
Region table for sample 1 : PST 6 lib redo 3/14/12

From [bp]	Molarity [pmol/l]	Average Size [bp]	Conc. [pg/μl]	To [bp]	Corr. Area	% of Total	Size distribution in CV [%]	Color
379	244,516.1	478	76,886.27	545	7,934.5	95	6.3	Blue

Assay Class: High Sensitivity DNA Assay
 Data Path: C:\...ents and Settings\Bioanalyzer\2012-03-14\2012-03-14_002.xad

Created: 3/14/2012 11:09:43 AM
 Modified: 3/14/2012 11:53:11 AM

Electropherogram Summary Continued ...



Overall Results for sample 2 : PST 2 lib redo (e-gel #2)

Number of peaks found: 8 Corr. Area 1: 10,099.8
 Noise: 0.7

Peak table for sample 2 : PST 2 lib redo (e-gel #2)

Peak	Size [bp]	Conc. [pg/μl]	Molarity [pmol/l]	Observations
1	32	0.00	0.0	
2	35	125.00	5,411.3	Lower Marker
3	266	150.83	860.4	
4	483	95,364.97	299,228.3	
5	588	2,258.07	5,814.5	
6	6,431	78.70	18.5	
7	10,380	75.00	10.9	Upper Marker
8	21,980	0.00	0.0	
9	31,509	0.00	0.0	
10	53,882	0.00	0.0	

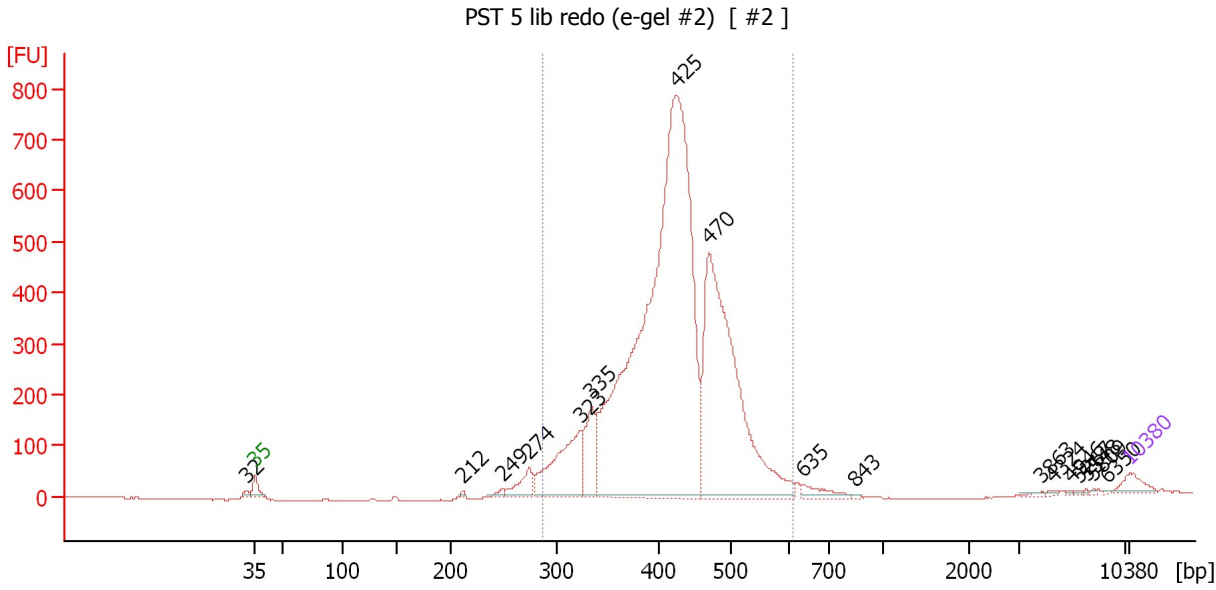
Region table for sample 2 : PST 2 lib redo (e-gel #2)

From [bp]	Molarity [pmol/l]	Average Size [bp]	Conc. [pg/μl]	To [bp]	Corr. Area	% of Total	Size distribution in CV [%]	Color
322	334,034.4	446	96,831.19	546	10,099.8	91	11.1	Blue

Assay Class: High Sensitivity DNA Assay
 Data Path: C:\...ents and Settings\Bioanalyzer\2012-03-14\2012-03-14_002.xad

Created: 3/14/2012 11:09:43 AM
 Modified: 3/14/2012 11:53:11 AM

Electropherogram Summary Continued ...



Overall Results for sample 3 : PST 5 lib redo (e-gel #2)

Number of peaks found: 17 Corr. Area 1: 6,927.3
 Noise: 0.9

Peak table for sample 3 : PST 5 lib redo (e-gel #2)

Peak	Size [bp]	Conc. [pg/μl]	Molarity [pmol/l]	Observations
1	32	0.00	0.0	
2	35	125.00	5,411.3	Lower Marker
3	212	14.20	101.5	
4	249	38.23	233.0	
5	274	212.66	1,177.4	
6	323	840.16	3,935.7	
7	335	418.15	1,894.0	
8	425	7,231.29	25,794.6	
9	470	2,965.95	9,555.1	
10	635	106.70	254.5	
11	843	8.38	15.1	
12	3,863	13.93	5.5	
13	4,324	9.98	3.5	
14	4,946	5.14	1.6	
15	5,267	6.66	1.9	
16	5,548	5.30	1.4	
17	5,809	5.43	1.4	
18	6,350	5.38	1.3	
19	10,380	75.00	10.9	Upper Marker

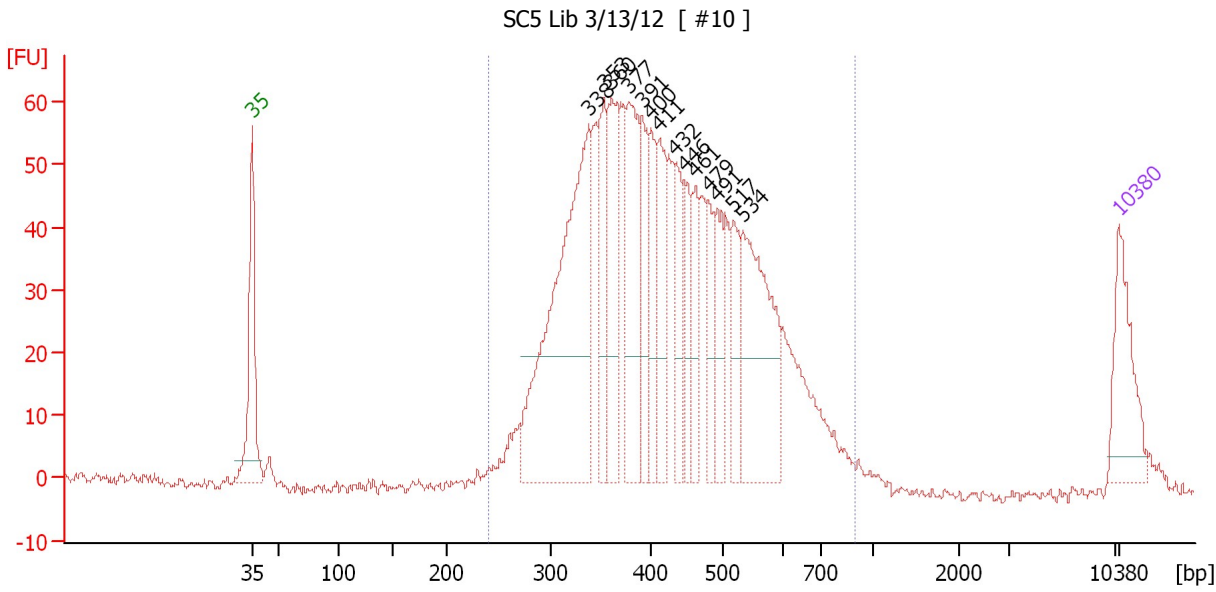
Region table for sample 3 : PST 5 lib redo (e-gel #2)

From [bp]	Molarity [pmol/l]	Average Size [bp]	Conc. [pg/μl]	To [bp]	Corr. Area	% of Total	Size distribution in CV [%]	Color
287	41,378.6	423	11,279.56	610	6,927.3	96	14.0	Blue

Assay Class: High Sensitivity DNA Assay
 Data Path: C:\...ents and Settings\Bioanalyzer\2012-03-14\2012-03-14_002.xad

Created: 3/14/2012 11:09:43 AM
 Modified: 3/14/2012 11:53:11 AM

Electropherogram Summary Continued ...



Setpoint Deviations for sample 4 : SC5 Lib 3/13/12

Height Threshold [FU] : 20

Overall Results for sample 4 : SC5 Lib 3/13/12

Number of peaks found: 14 Corr. Area 1: 1,362.4
 Noise: 1.0

Peak table for sample 4 : SC5 Lib 3/13/12

Peak	Size [bp]	Conc. [pg/μl]	Molarity [pmol/l]	Observations
1	35	125.00	5,411.3	Lower Marker
2	338	497.13	2,229.2	
3	353	114.12	490.2	
4	360	134.54	566.7	
5	377	177.71	713.8	
6	391	88.78	344.0	
7	400	84.15	319.1	
8	411	96.78	356.6	
9	432	88.43	310.2	
10	446	64.49	219.1	
11	461	67.10	220.6	
12	479	58.63	185.3	
13	491	76.31	235.3	
14	517	59.50	174.2	
15	534	226.73	643.6	
16	10,380	75.00	10.9	Upper Marker

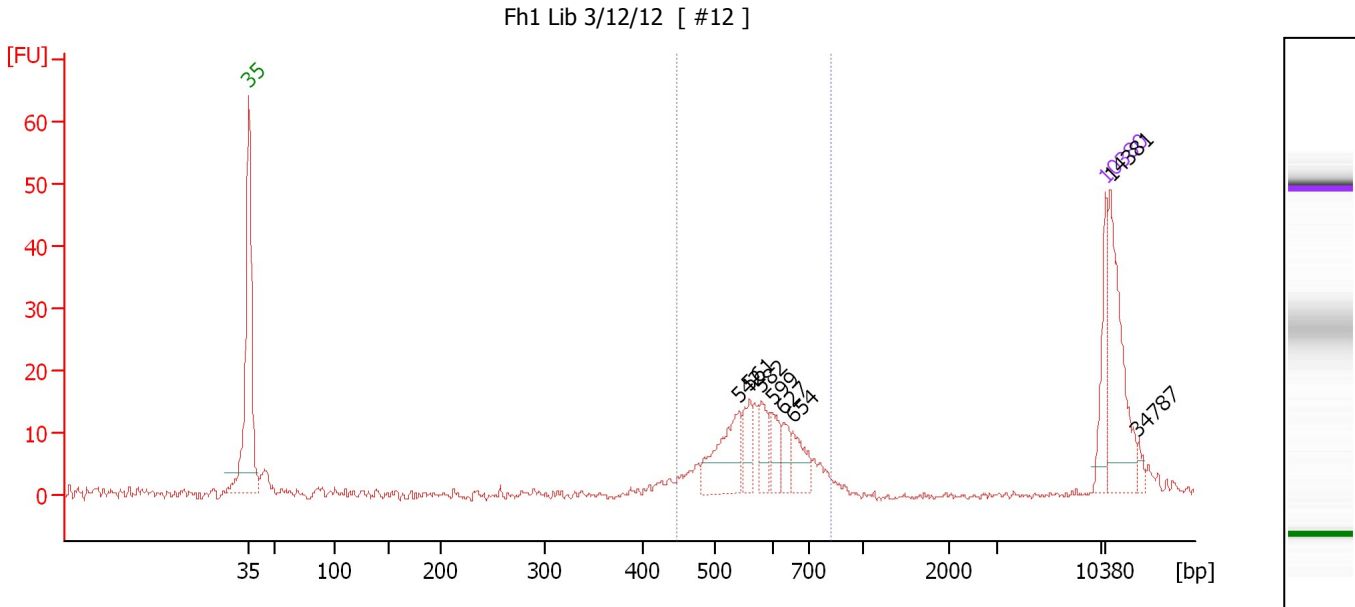
Region table for sample 4 : SC5 Lib 3/13/12

From [bp]	Molarity [pmol/l]	Average Size [bp]	Conc. [pg/μl]	To [bp]	Corr. Area	% of Total	Size distribution in CV [%]	Color
241	9,335.4	433	2,460.08	893	1,362.4	97	25.2	Blue

Assay Class: High Sensitivity DNA Assay
 Data Path: C:\...ents and Settings\Bioanalyzer\2012-03-14\2012-03-14_002.xad

Created: 3/14/2012 11:09:43 AM
 Modified: 3/14/2012 11:53:11 AM

Electropherogram Summary Continued ...



Overall Results for sample 5 : Fh1 Lib 3/12/12

Number of peaks found: 8 Corr. Area 1: 118.5
 Noise: 0.5

Peak table for sample 5 : Fh1 Lib 3/12/12

Peak	Size [bp]	Conc. [pg/μl]	Molarity [pmol/l]	Observations
1	35	125.00	5,411.3	Lower Marker
2	542	147.17	411.2	
3	561	59.70	161.3	
4	582	57.62	150.1	
5	599	47.21	119.4	
6	627	41.46	100.1	
7	654	59.95	138.8	
8	10,380	75.00	10.9	Upper Marker
9	14,381	0.00	0.0	
10	34,787	0.00	0.0	

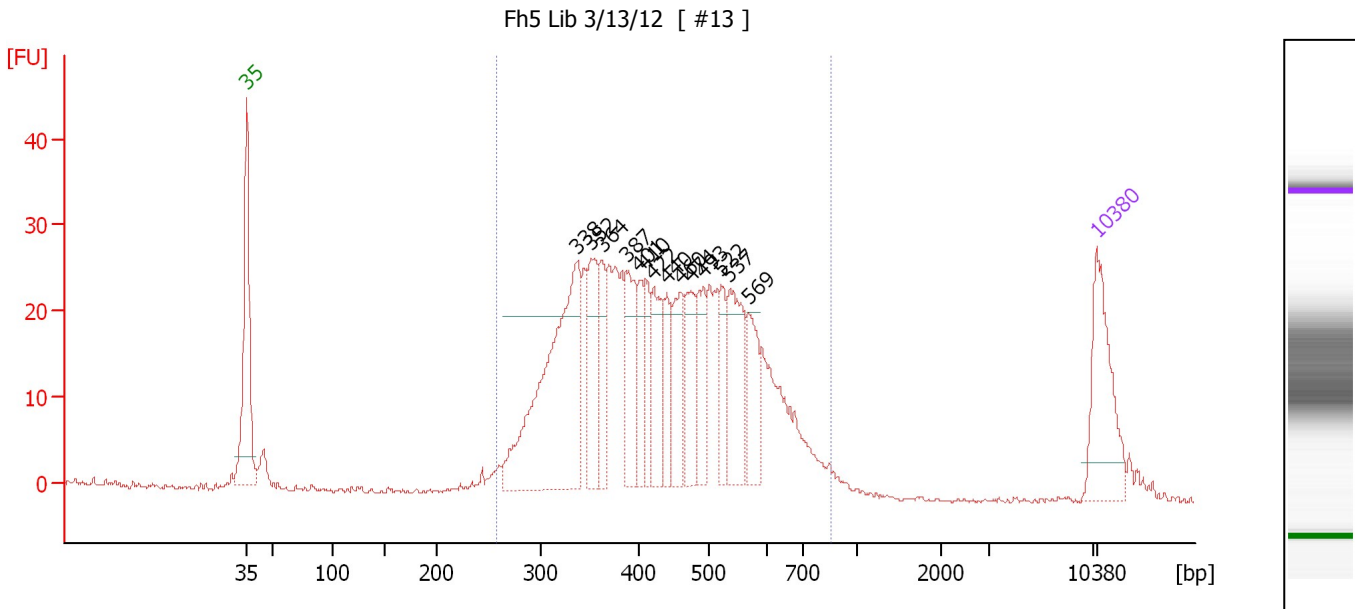
Region table for sample 5 : Fh1 Lib 3/12/12

From [bp]	Molarity [pmol/l]	Average Size [bp]	Conc. [pg/μl]	To [bp]	Corr. Area	% of Total	Size distribution in CV [%]	Color
447	1,294.8	583	488.94	820	118.5	58	12.3	Blue

Assay Class: High Sensitivity DNA Assay
 Data Path: C:\...ents and Settings\Bioanalyzer\2012-03-14\2012-03-14_002.xad

Created: 3/14/2012 11:09:43 AM
 Modified: 3/14/2012 11:53:11 AM

Electropherogram Summary Continued ...



Setpoint Deviations for sample 6 : Fh5 Lib 3/13/12

Height Threshold [FU] : 20

Overall Results for sample 6 : Fh5 Lib 3/13/12

Number of peaks found: 14 Corr. Area 1: 636.5
 Noise: 0.3

Peak table for sample 6 : Fh5 Lib 3/13/12

Peak	Size [bp]	Conc. [pg/μl]	Molarity [pmol/l]	Observations
1	35	125.00	5,411.3	Lower Marker
2	338	311.08	1,393.9	
3	352	78.11	336.0	
4	364	48.97	204.1	
5	387	73.51	287.4	
6	401	44.27	167.1	
7	410	40.14	148.2	
8	422	63.97	229.8	
9	440	36.47	125.6	
10	460	63.80	210.0	
11	474	64.69	206.8	
12	493	52.86	162.5	
13	522	40.25	116.9	
14	537	89.83	253.6	
15	569	50.87	135.5	
16	10,380	75.00	10.9	Upper Marker

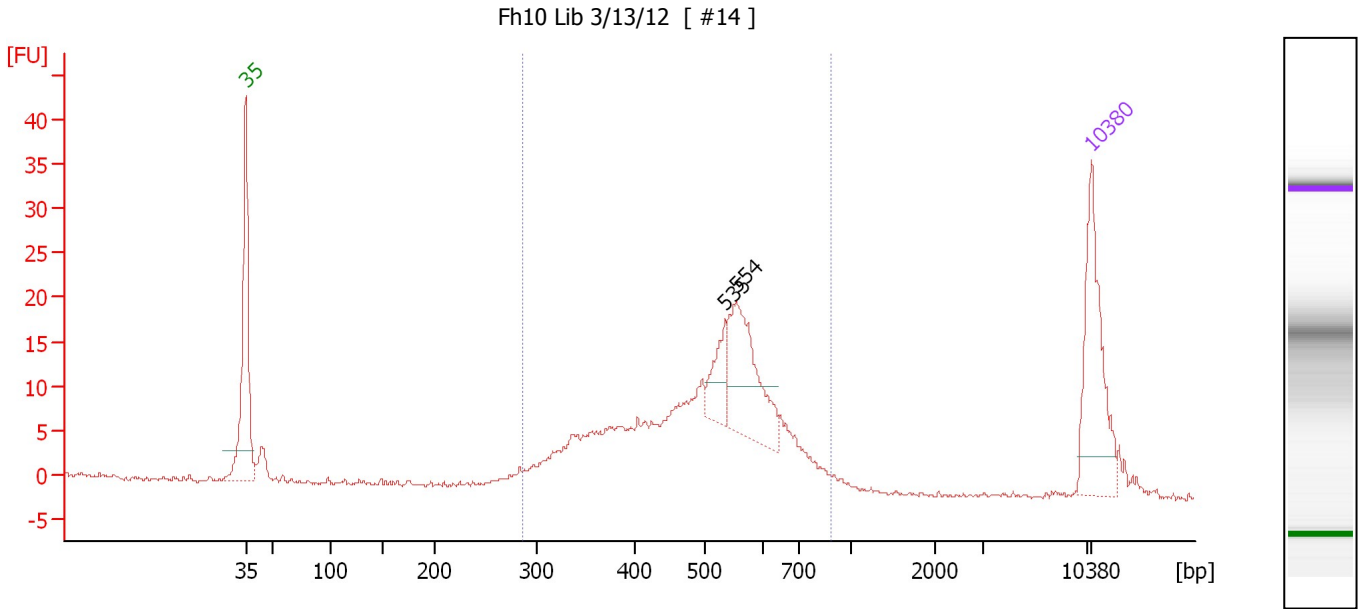
Region table for sample 6 : Fh5 Lib 3/13/12

From [bp]	Molarity [pmol/l]	Average Size [bp]	Conc. [pg/μl]	To [bp]	Corr. Area	% of Total	Size distribution in CV [%]	Color
259	5,445.8	445	1,474.44	856	636.5	97	24.7	Blue

Assay Class: High Sensitivity DNA Assay
 Data Path: C:\...ents and Settings\Bioanalyzer\2012-03-14\2012-03-14_002.xad

Created: 3/14/2012 11:09:43 AM
 Modified: 3/14/2012 11:53:11 AM

Electropherogram Summary Continued ...



Overall Results for sample 7 : Fh10 Lib 3/13/12

Number of peaks found: 2 Corr. Area 1: 254.3
 Noise: 0.2

Peak table for sample 7 : Fh10 Lib 3/13/12

Peak	Size [bp]	Conc. [pg/μl]	Molarity [pmol/l]	Observations
1	35	125.00	5,411.3	Lower Marker
2	535	31.61	89.5	
3	554	93.41	255.3	
4	10,380	75.00	10.9	Upper Marker

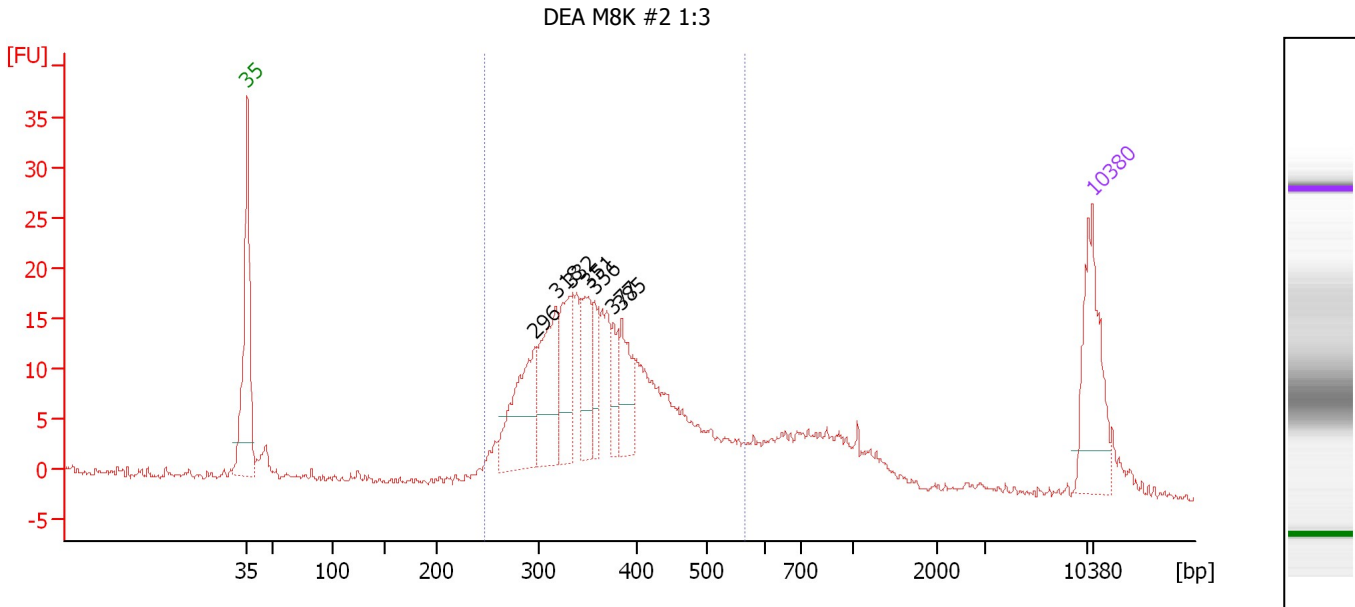
Region table for sample 7 : Fh10 Lib 3/13/12

From [bp]	Molarity [pmol/l]	Average Size [bp]	Conc. [pg/μl]	To [bp]	Corr. Area	% of Total	Size distribution in CV [%]	Color
286	1,667.1	505	516.00	881	254.3	93	21.9	Blue

Assay Class: High Sensitivity DNA Assay
 Data Path: C:\...ents and Settings\Bioanalyzer\2012-03-14\2012-03-14_002.xad

Created: 3/14/2012 11:09:43 AM
 Modified: 3/14/2012 11:53:11 AM

Electropherogram Summary Continued ...



Overall Results for sample 8 : DEA M8K #2 1:3

Number of peaks found: 7 Corr. Area 1: 317.7
 Noise: 0.4

Peak table for sample 8 : DEA M8K #2 1:3

Peak	Size [bp]	Conc. [pg/μl]	Molarity [pmol/l]	Observations
1	35	125.00	5,411.3	Lower Marker
2	296	113.22	579.4	
3	318	100.45	479.1	
4	332	74.44	339.3	
5	351	62.83	271.3	
6	356	35.79	152.1	
7	377	26.43	106.4	
8	385	50.75	199.9	
9	10,380	75.00	10.9	Upper Marker

Region table for sample 8 : DEA M8K #2 1:3

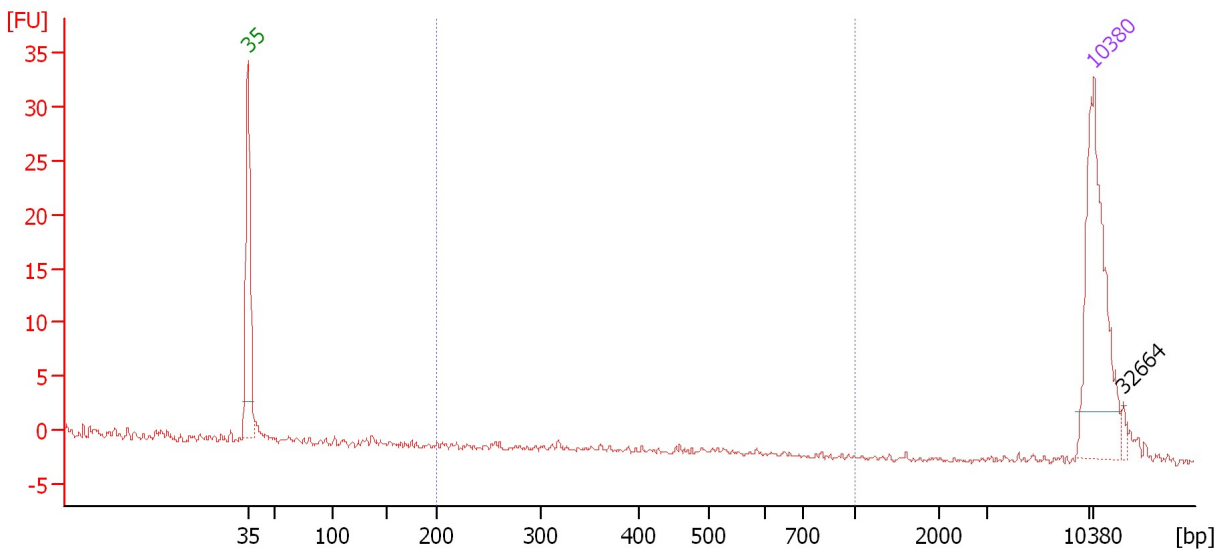
From [bp]	Molarity [pmol/l]	Average Size [bp]	Conc. [pg/μl]	To [bp]	Corr. Area	% of Total	Size distribution in CV [%]	Color
248	3,760.1	370	877.42	568	317.7	79	19.0	Blue

Assay Class: High Sensitivity DNA Assay
 Data Path: C:\...ents and Settings\Bioanalyzer\2012-03-14\2012-03-14_002.xad

Created: 3/14/2012 11:09:43 AM
 Modified: 3/14/2012 11:53:11 AM

Electropherogram Summary Continued ...

Sergio Lib 2 3/14/12



Overall Results for sample 9 : Sergio Lib 2 3/14/12

Number of peaks found: 1 Corr. Area 1: 1.4
 Noise: 0.2

Peak table for sample 9 : Sergio Lib 2 3/14/12

Peak	Size [bp]	Conc. [pg/μl]	Molarity [pmol/l]	Observations
1	35	125.00	5,411.3	Lower Marker
2	10,380	75.00	10.9	Upper Marker
3	32,664	0.00	0.0	

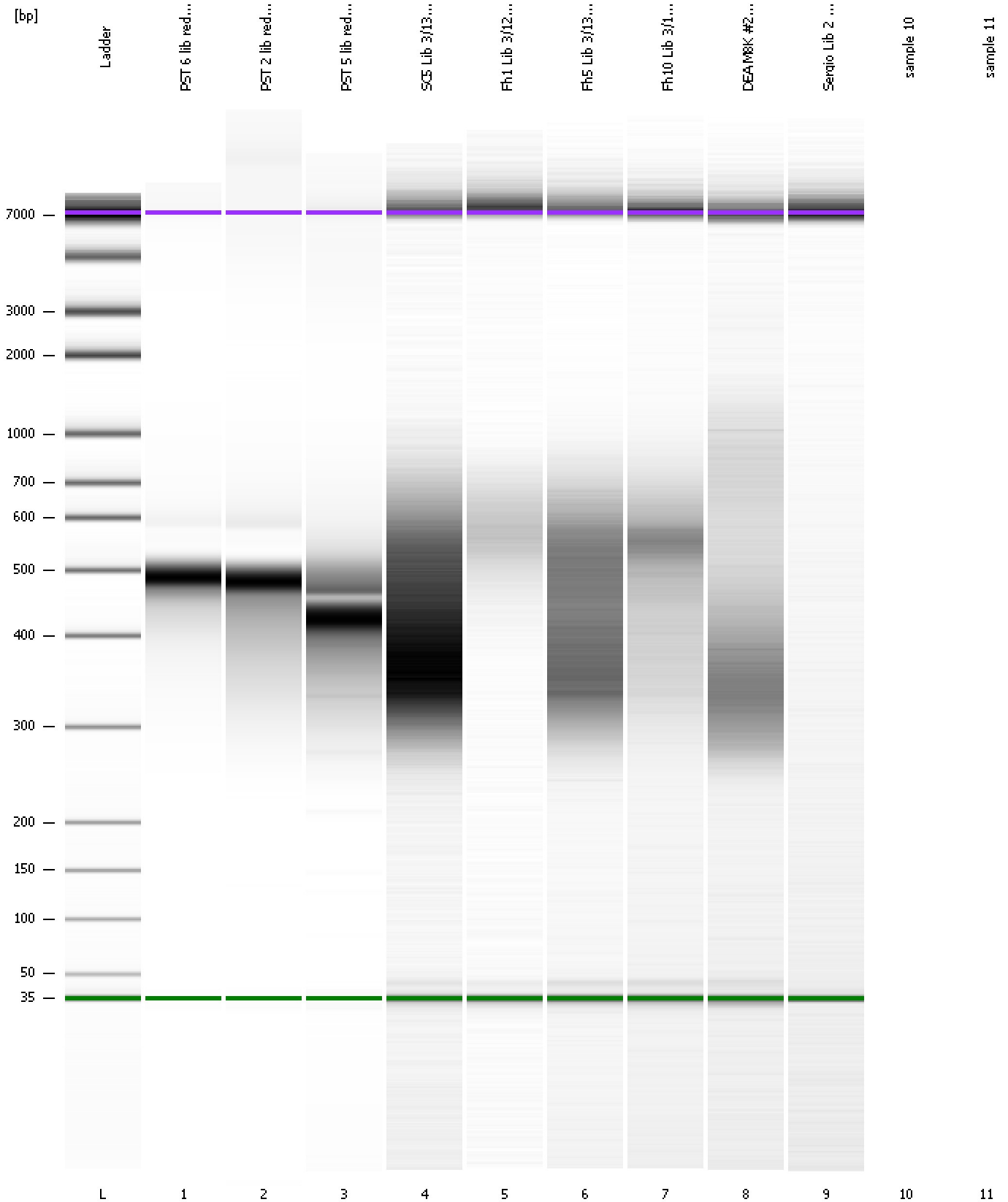
Region table for sample 9 : Sergio Lib 2 3/14/12

From [bp]	Molarity [pmol/l]	Average Size [bp]	Conc. [pg/μl]	To [bp]	Corr. Area	% of Total	Size distribution in CV [%]	Color
200	13.1	397	3.00	1,000	1.4	7	30.2	Blue

Assay Class: High Sensitivity DNA Assay
Data Path: C:\...ents and Settings\Bioanalyzer\2012-03-14\2012-03-14_002.xad

Created: 3/14/2012 11:09:43 AM
Modified: 3/14/2012 11:53:11 AM

Gel Image



Assay Class: High Sensitivity DNA Assay
Data Path: C:\...ents and Settings\Bioanalyzer\2012-03-14\2012-03-14_002.xad

Created: 3/14/2012 11:09:43 AM
Modified: 3/14/2012 11:53:11 AM

Invalid Samples

Sample 10 has not been run, no results available.

Sample 11 has not been run, no results available.

Assay Class: High Sensitivity DNA Assay
 Data Path: C:\...ents and Settings\Bioanalyzer\2012-03-14\2012-03-14_002.xad

Created: 3/14/2012 11:09:43 AM
 Modified: 3/14/2012 11:53:11 AM

Run Logbook

Description	Number	Source	Category	Sub Category	Time	Time Zone	User	Host
Run ended on port 1 (Number of wells acquired: 10)		Instrument	Run		3/14/2012 11:45:19 AM	(GMT --07:00) Pacific Standard Time	UC Davis	D8XSMGH1
Run started on port 1 (File: C:\Documents and Settings\Bioanalyzer\2012-03-14\2012-03-14_002.xad)		Instrument	Run		3/14/2012 11:09:49 AM	(GMT --07:00) Pacific Standard Time	UC Davis	D8XSMGH1
Product Number : G2938B		Instrument	Run		3/14/2012 11:09:49 AM	(GMT --07:00) Pacific Standard Time	UC Davis	D8XSMGH1
Name :		Instrument	Run		3/14/2012 11:09:49 AM	(GMT --07:00) Pacific Standard Time	UC Davis	D8XSMGH1
Vendor : Agilent Technologies		Instrument	Run		3/14/2012 11:09:49 AM	(GMT --07:00) Pacific Standard Time	UC Davis	D8XSMGH1
Serial# : DE13701086		Instrument	Run		3/14/2012 11:09:49 AM	(GMT --07:00) Pacific Standard Time	UC Davis	D8XSMGH1
Firmware : C.01.069		Instrument	Run		3/14/2012 11:09:49 AM	(GMT --07:00) Pacific Standard Time	UC Davis	D8XSMGH1
Cartridge : Electrode		Instrument	Run		3/14/2012 11:09:49 AM	(GMT --07:00) Pacific Standard Time	UC Davis	D8XSMGH1