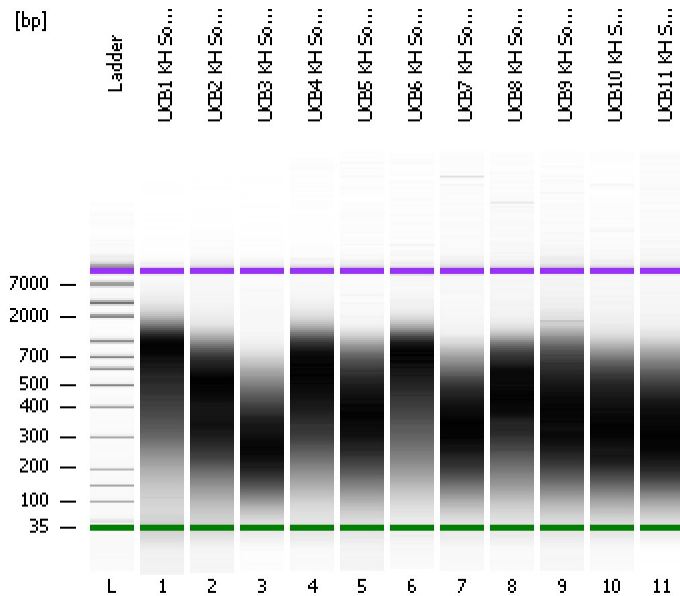


Assay Class: High Sensitivity DNA Assay
Data Path: C:\...ents and Settings\Bioanalyzer\2012-03-15\2012-03-15_002.xad

Created: 3/15/2012 10:15:12 AM
Modified: 3/15/2012 12:22:02 PM

Electrophoresis File Run Summary



Instrument Information:

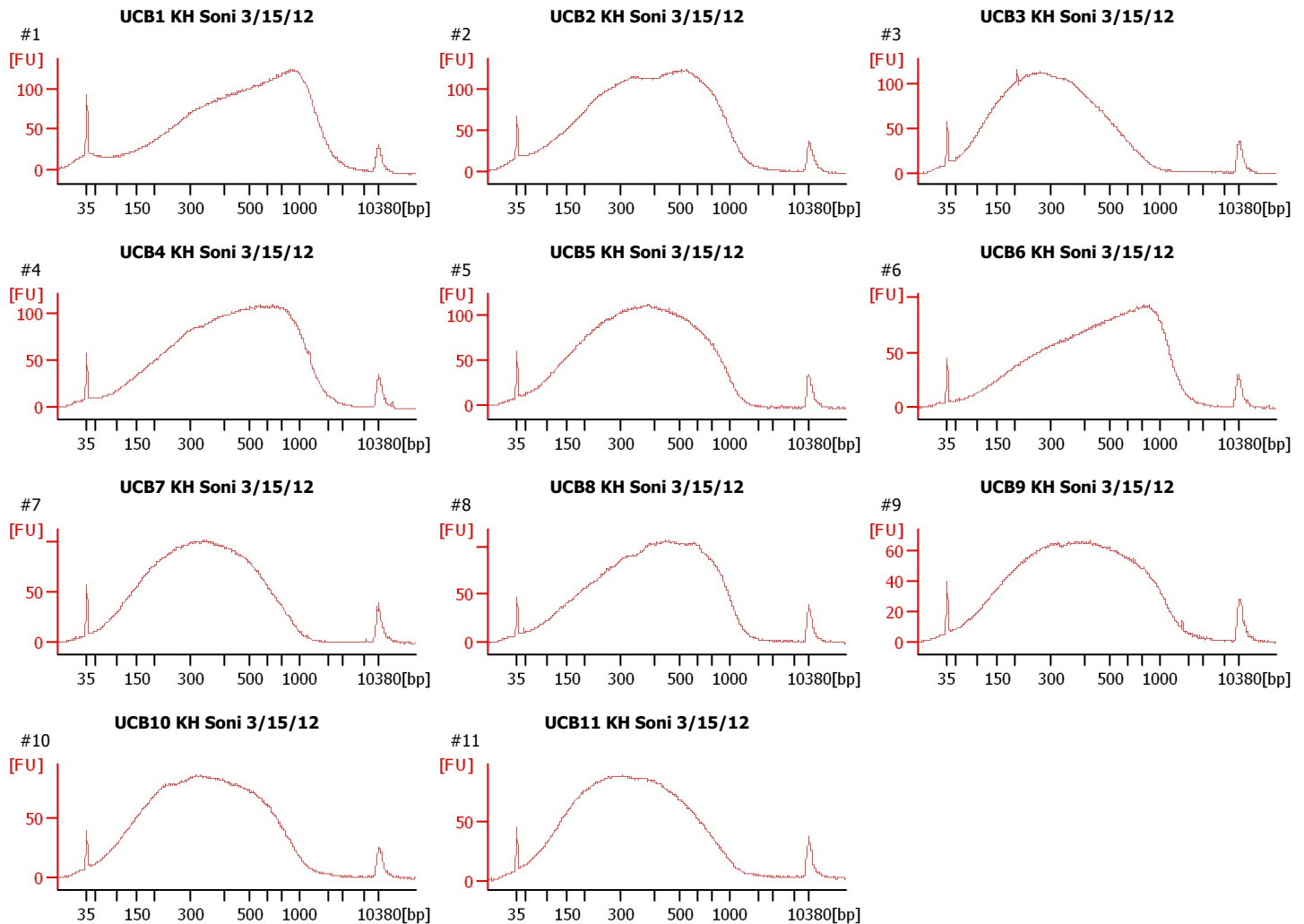
Instrument Name: DE13701086 Firmware: C.01.069
Serial#: DE13701086 Type: G2938B

Assay Information:

Assay Origin Path: C:\Program Files\Agilent\2100 bioanalyzer\2100 expert\assays\dsDNA\High Sensitivity DNA.xsy
Assay Class: High Sensitivity DNA Assay
Version: 1.03
Assay Comments: Copyright © 2003-2010 Agilent Technologies

Chip Information:

Chip Lot #:
Reagent Kit Lot #:
Chip Comments:



Assay Class: High Sensitivity DNA Assay
Data Path: C:\...ents and Settings\Bioanalyzer\2012-03-15\2012-03-15_002.xad

Created: 3/15/2012 10:15:12 AM
Modified: 3/15/2012 12:22:02 PM

Electrophoresis File Run Summary (Chip Summary)

Sample Name	Sample Comment	Rest. Digest	Status	Observation	Result Label	Result Color
UCB1 KH Soni 3/15/12	#1	<input type="checkbox"/>	✓			
UCB2 KH Soni 3/15/12	#2	<input type="checkbox"/>	✓			
UCB3 KH Soni 3/15/12	#3	<input type="checkbox"/>	✓			
UCB4 KH Soni 3/15/12	#4	<input type="checkbox"/>	✓			
UCB5 KH Soni 3/15/12	#5	<input type="checkbox"/>	✓			
UCB6 KH Soni 3/15/12	#6	<input type="checkbox"/>	✓			
UCB7 KH Soni 3/15/12	#7	<input type="checkbox"/>	✓			
UCB8 KH Soni 3/15/12	#8	<input type="checkbox"/>	✓			
UCB9 KH Soni 3/15/12	#9	<input type="checkbox"/>	✓			
UCB10 KH Soni 3/15/12	#10	<input type="checkbox"/>	✓			
UCB11 KH Soni 3/15/12	#11	<input type="checkbox"/>	✓			
Ladder		<input type="checkbox"/>	✓			

Chip Lot #**Reagent Kit Lot #****Chip Comments :**

Assay Class: High Sensitivity DNA Assay
Data Path: C:\...ents and Settings\Bioanalyzer\2012-03-15\2012-03-15_002.xad

Created: 3/15/2012 10:15:12 AM
Modified: 3/15/2012 12:22:02 PM

Electrophoresis Assay Details

General Analysis Settings

Number of Available Sample and Ladder Wells (Max.) : 12
Minimum Visible Range [s] : 32
Maximum Visible Range [s] : 138
Start Analysis Time Range [s] : 33
End Analysis Time Range [s] : 137.5
Ladder Concentration [pg/μl] : 1950
Uses Standard Area for Ladder Fragments
Lower Marker Concentration [pg/μl] : 125
Upper Marker Concentration [pg/μl] : 75
Used Upper Marker for Quantitation
Standard Curve Fit is Point to Point
Show Data Aligned to Lower and Upper Marker

Integrator Settings

Integration Start Time [s] : 33.05
Integration End Time [s] : 137
Slope Threshold : 0.8
Height Threshold [FU] : 20
Area Threshold : 0.1
Width Threshold [s] : 0.6
Baseline Plateau [s] : 0.5

Filter Settings

Filter Width [s] : 0.5
Polynomial Order : 4

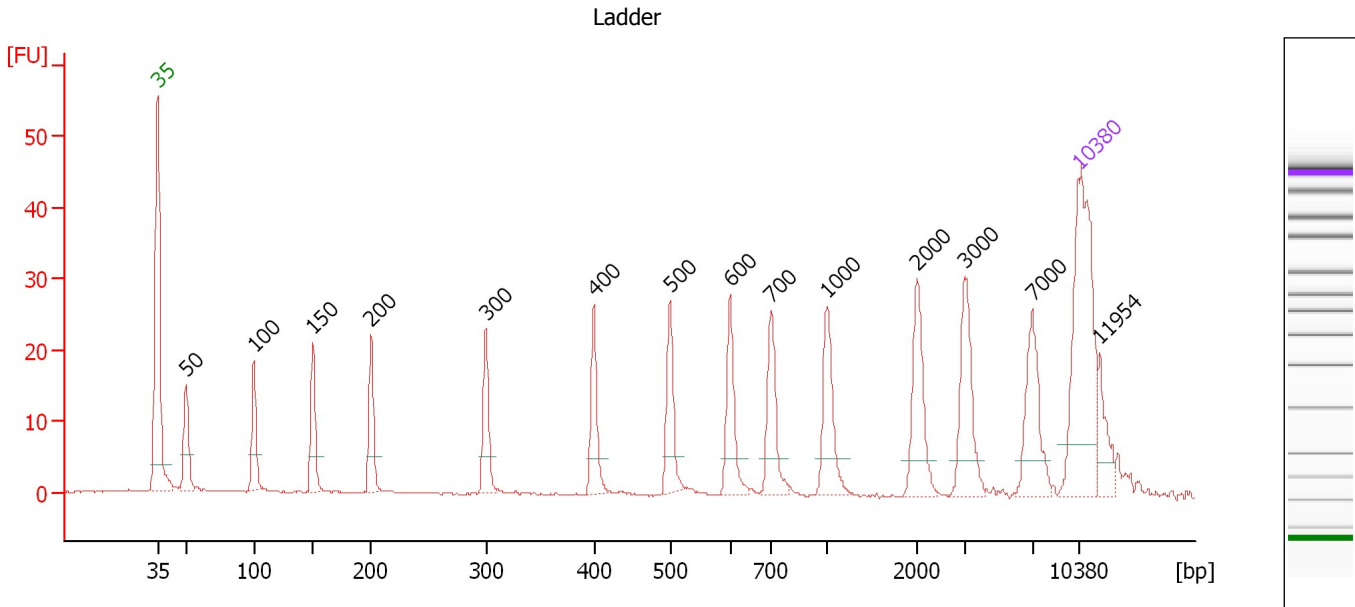
Ladder

Ladder Peak	Size	Area
1	35	160
2	50	210
3	100	208
4	150	221
5	200	242
6	300	270
7	400	305
8	500	306
9	600	336
10	700	321
11	1000	366
12	2000	413
13	3000	411
14	7000	400
15	10380	214

Assay Class: High Sensitivity DNA Assay
 Data Path: C:\...ents and Settings\Bioanalyzer\2012-03-15\2012-03-15_002.xad

Created: 3/15/2012 10:15:12 AM
 Modified: 3/15/2012 12:22:02 PM

Electropherogram Summary



Overall Results for Ladder

Noise: 0.1

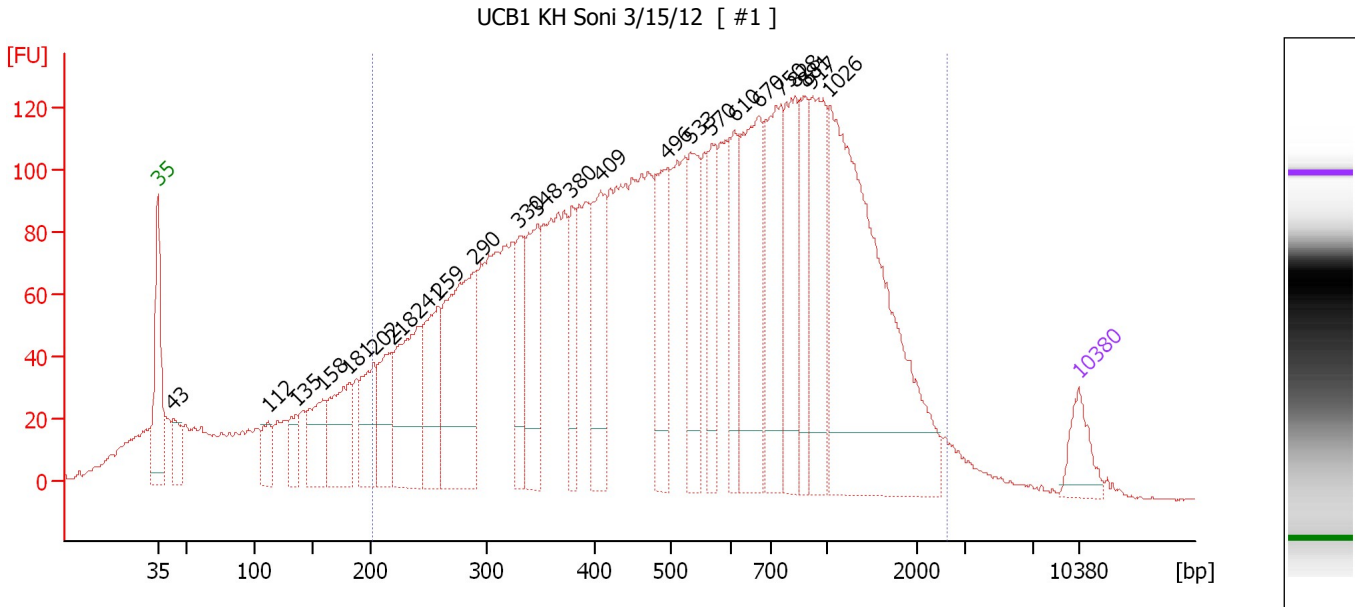
Peak table for Ladder

Peak	Size [bp]	Conc. [pg/μl]	Molarity [pmol/l]	Observations
1	35	125.00	5,411.3	Lower Marker
2	50	150.00	4,545.5	Ladder Peak
3	100	150.00	2,272.7	Ladder Peak
4	150	150.00	1,515.2	Ladder Peak
5	200	150.00	1,136.4	Ladder Peak
6	300	150.00	757.6	Ladder Peak
7	400	150.00	568.2	Ladder Peak
8	500	150.00	454.5	Ladder Peak
9	600	150.00	378.8	Ladder Peak
10	700	150.00	324.7	Ladder Peak
11	1,000	150.00	227.3	Ladder Peak
12	2,000	150.00	113.6	Ladder Peak
13	3,000	150.00	75.8	Ladder Peak
14	7,000	150.00	32.5	Ladder Peak
15	10,380	75.00	10.9	Upper Marker
16	11,954	0.00	0.0	

Assay Class: High Sensitivity DNA Assay
 Data Path: C:\...ents and Settings\Bioanalyzer\2012-03-15\2012-03-15_002.xad

Created: 3/15/2012 10:15:12 AM
 Modified: 3/15/2012 12:22:02 PM

Electropherogram Summary Continued ...



Overall Results for sample 1 : UCB1 KH Soni 3/15/12

Number of peaks found: 24 Corr. Area 1: 4,548.5
 Noise: 0.3

Peak table for sample 1 : UCB1 KH Soni 3/15/12

Peak	Size [bp]	Conc. [pg/μl]	Molarity [pmol/l]	Observations
1	35	125.00	5,411.3	Lower Marker
2	43	93.15	3,256.2	
3	112	96.00	1,294.6	
4	135	91.92	1,030.8	
5	158	188.76	1,810.0	
6	181	266.75	2,229.9	
7	202	201.74	1,511.4	
8	218	201.63	1,403.2	
9	241	392.21	2,469.5	
10	259	303.03	1,772.9	
11	290	577.32	3,011.3	
12	330	173.69	797.2	
13	348	280.52	1,222.0	
14	380	159.96	638.6	
15	409	293.45	1,087.1	
16	496	274.12	837.3	
17	533	261.10	741.7	
18	570	169.58	451.1	
19	610	180.39	448.1	
20	670	458.28	1,036.4	
21	750	363.11	733.8	
22	828	295.26	540.3	
23	881	168.52	289.7	
24	917	328.52	542.9	
25	1,026	1,069.19	1,578.4	
26	10,380	75.00	10.9	Upper Marker


Assay Class: High Sensitivity DNA Assay
Data Path: C:\...ents and Settings\Bioanalyzer\2012-03-15\2012-03-15_002.xad

Created: 3/15/2012 10:15:12 AM
Modified: 3/15/2012 12:22:02 PM

Electropherogram Summary Continued ...

... Region table for sample 1 :

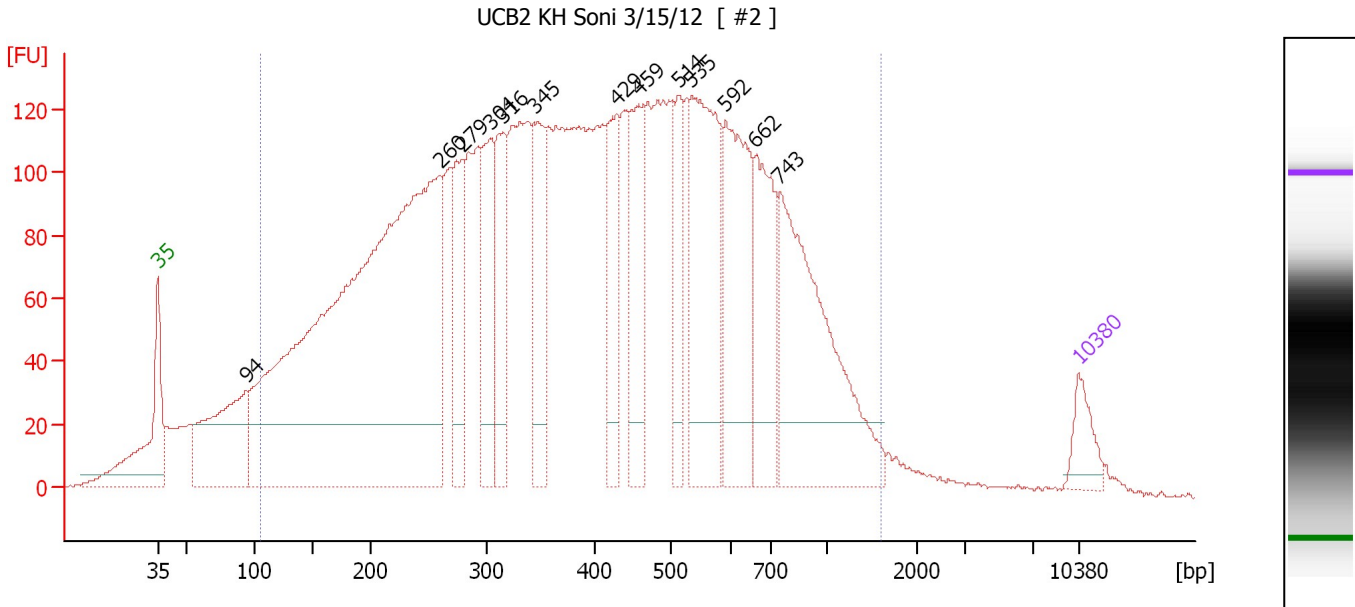
UCB1 KH Soni 3/15/12

From [bp]	Molarity [pmol/l]	Average Size [bp]	Conc. [pg/μl]	To [bp]	Corr. Area	% of Total	Size distribution in CV [%]	Co lor
201	31,360.1	666	9,046.98	2,623	4,548.5	85	64.4	

Assay Class: High Sensitivity DNA Assay
 Data Path: C:\...ents and Settings\Bioanalyzer\2012-03-15\2012-03-15_002.xad

Created: 3/15/2012 10:15:12 AM
 Modified: 3/15/2012 12:22:02 PM

Electropherogram Summary Continued ...



Overall Results for sample 2 : UCB2 KH Soni 3/15/12

Number of peaks found: 13 Corr. Area 1: 5,707.9
 Noise: 0.3

Peak table for sample 2 : UCB2 KH Soni 3/15/12

Peak	Size [bp]	Conc. [pg/μl]	Molarity [pmol/l]	Observations
1	35	125.00	5,411.3	Lower Marker
2	94	592.67	9,561.5	
3	260	3,368.92	19,614.6	
4	279	325.44	1,766.4	
5	304	362.26	1,807.9	
6	316	323.49	1,553.2	
7	345	362.81	1,592.7	
8	429	287.86	1,016.3	
9	459	350.27	1,155.3	
10	514	207.57	611.9	
11	535	687.22	1,944.5	
12	592	545.94	1,397.0	
13	662	372.53	852.7	
14	743	816.77	1,666.1	
15	10,380	75.00	10.9	Upper Marker

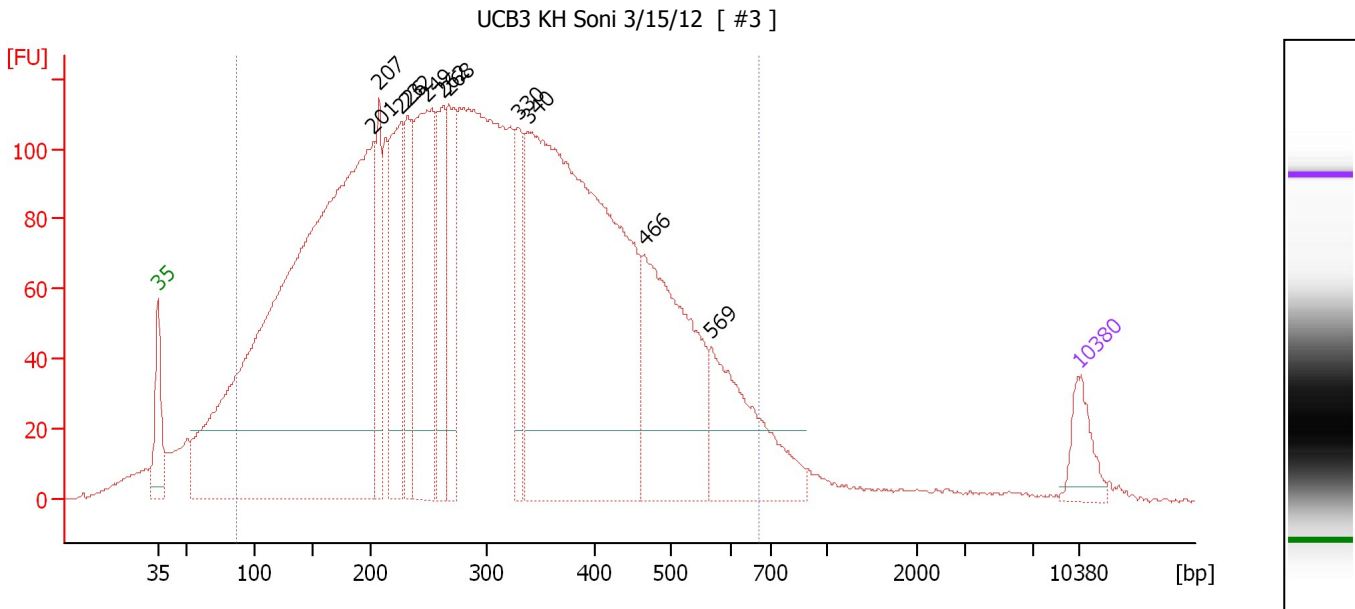
Region table for sample 2 : UCB2 KH Soni 3/15/12

From [bp]	Molarity [pmol/l]	Average Size [bp]	Conc. [pg/μl]	To [bp]	Corr. Area	% of Total	Size distribution in CV [%]	Color
105	63,577.0	442	12,441.62	1,605	5,707.9	93	53.6	Blue

Assay Class: High Sensitivity DNA Assay
 Data Path: C:\...ents and Settings\Bioanalyzer\2012-03-15\2012-03-15_002.xad

Created: 3/15/2012 10:15:12 AM
 Modified: 3/15/2012 12:22:02 PM

Electropherogram Summary Continued ...



Overall Results for sample 3 : UCB3 KH Soni 3/15/12

Number of peaks found: 11 Corr. Area 1: 4,736.2
 Noise: 0.3

Peak table for sample 3 : UCB3 KH Soni 3/15/12

Peak	Size [bp]	Conc. [pg/μl]	Molarity [pmol/l]	Observations
1	35	125.00	5,411.3	Lower Marker
2	201	3,261.85	24,534.6	
3	207	270.73	1,984.0	
4	226	418.20	2,808.2	
5	232	262.65	1,718.7	
6	249	648.36	3,950.7	
7	262	288.64	1,667.7	
8	268	304.78	1,722.2	
9	330	202.02	928.8	
10	340	2,209.09	9,856.3	
11	466	683.80	2,225.4	
12	569	381.27	1,014.9	
13	10,380	75.00	10.9	Upper Marker

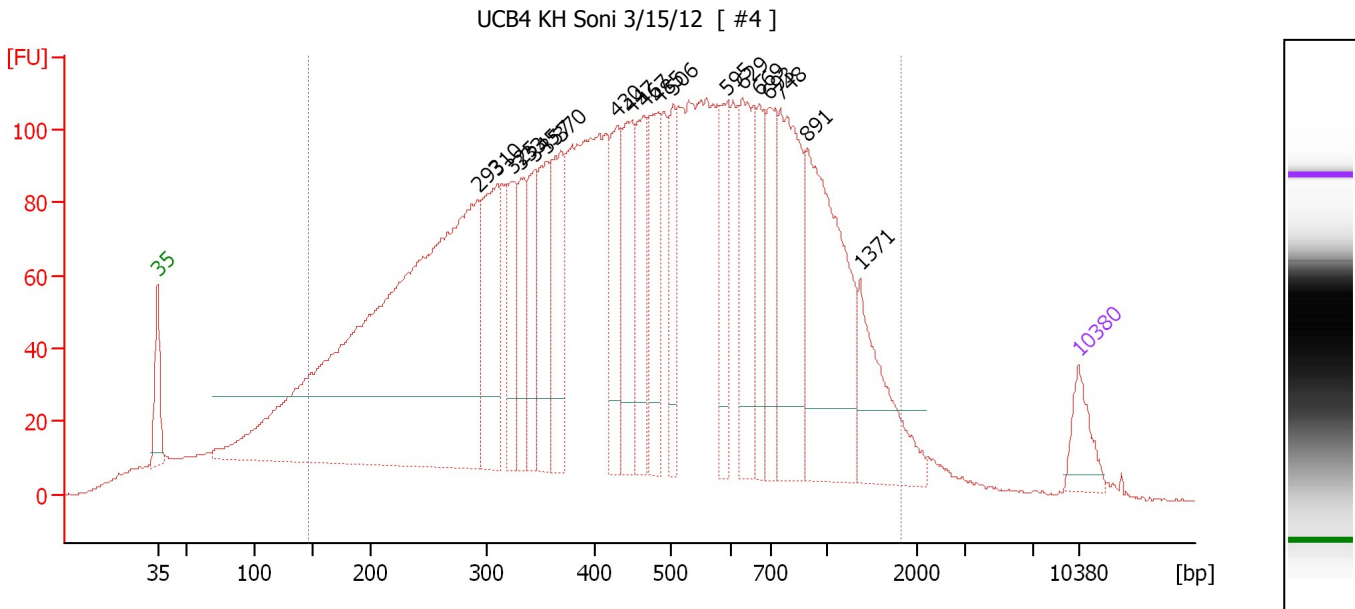
Region table for sample 3 : UCB3 KH Soni 3/15/12

From [bp]	Molarity [pmol/l]	Average Size [bp]	Conc. [pg/μl]	To [bp]	Corr. Area	% of Total	Size distribution in CV [%]	Color
87	70,270.2	306	10,468.83	668	4,736.2	92	41.6	Blue

Assay Class: High Sensitivity DNA Assay
 Data Path: C:\...ents and Settings\Bioanalyzer\2012-03-15\2012-03-15_002.xad

Created: 3/15/2012 10:15:12 AM
 Modified: 3/15/2012 12:22:02 PM

Electropherogram Summary Continued ...



Overall Results for sample 4 : UCB4 KH Soni 3/15/12

Number of peaks found: 19 Corr. Area 1: 4,590.0
 Noise: 0.3

Peak table for sample 4 : UCB4 KH Soni 3/15/12

Peak	Size [bp]	Conc. [pg/μl]	Molarity [pmol/l]	Observations
1	35	125.00	5,411.3	Lower Marker
2	293	2,599.65	13,440.5	
3	310	422.60	2,065.1	
4	325	211.21	984.9	
5	333	195.69	891.2	
6	345	208.41	915.4	
7	357	250.39	1,062.0	
8	370	265.33	1,087.9	
9	430	236.13	832.0	
10	447	279.36	946.2	
11	467	237.36	770.9	
12	485	237.79	743.2	
13	506	180.67	540.7	
14	595	187.11	476.8	
15	629	310.84	748.6	
16	669	173.42	392.6	
17	693	210.44	460.3	
18	748	436.28	884.1	
19	891	617.19	1,049.7	
20	1,371	246.41	272.3	
21	10,380	75.00	10.9	Upper Marker

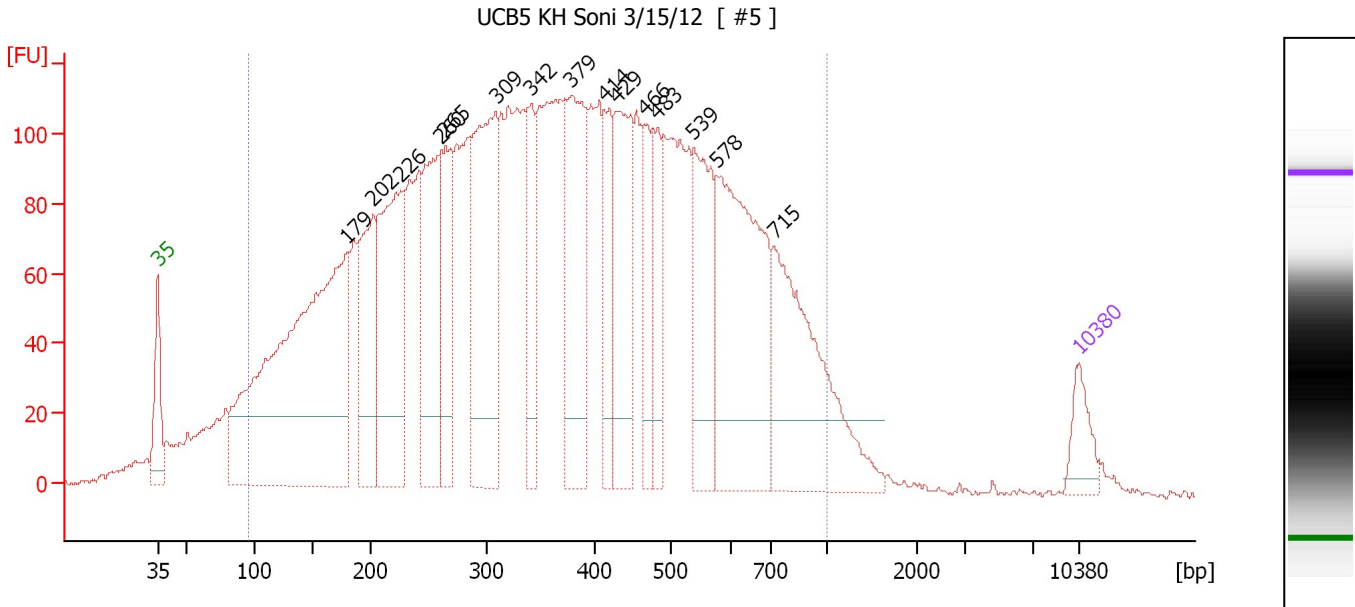
Region table for sample 4 : UCB4 KH Soni 3/15/12

From [bp]	Molarity [pmol/l]	Average Size [bp]	Conc. [pg/μl]	To [bp]	Corr. Area	% of Total	Size distribution in CV [%]	Color
147	45,115.2	529	10,625.39	1,822	4,590.0	90	57.8	Blue

Assay Class: High Sensitivity DNA Assay
 Data Path: C:\...ents and Settings\Bioanalyzer\2012-03-15\2012-03-15_002.xad

Created: 3/15/2012 10:15:12 AM
 Modified: 3/15/2012 12:22:02 PM

Electropherogram Summary Continued ...



Overall Results for sample 5 : UCB5 KH Soni 3/15/12

Number of peaks found: 15 Corr. Area 1: 4,940.9
 Noise: 0.8

Peak table for sample 5 : UCB5 KH Soni 3/15/12

Peak	Size [bp]	Conc. [pg/μl]	Molarity [pmol/l]	Observations
1	35	125.00	5,411.3	Lower Marker
2	179	1,827.51	15,471.9	
3	202	424.50	3,190.3	
4	226	685.74	4,603.4	
5	260	518.83	3,019.9	
6	265	323.38	1,851.5	
7	309	738.55	3,620.7	
8	342	250.18	1,108.5	
9	379	518.95	2,072.3	
10	414	200.42	734.0	
11	429	423.55	1,494.2	
12	466	213.48	694.5	
13	483	179.74	563.4	
14	539	378.36	1,063.1	
15	578	762.01	1,996.4	
16	715	635.68	1,346.4	
17	10,380	75.00	10.9	Upper Marker

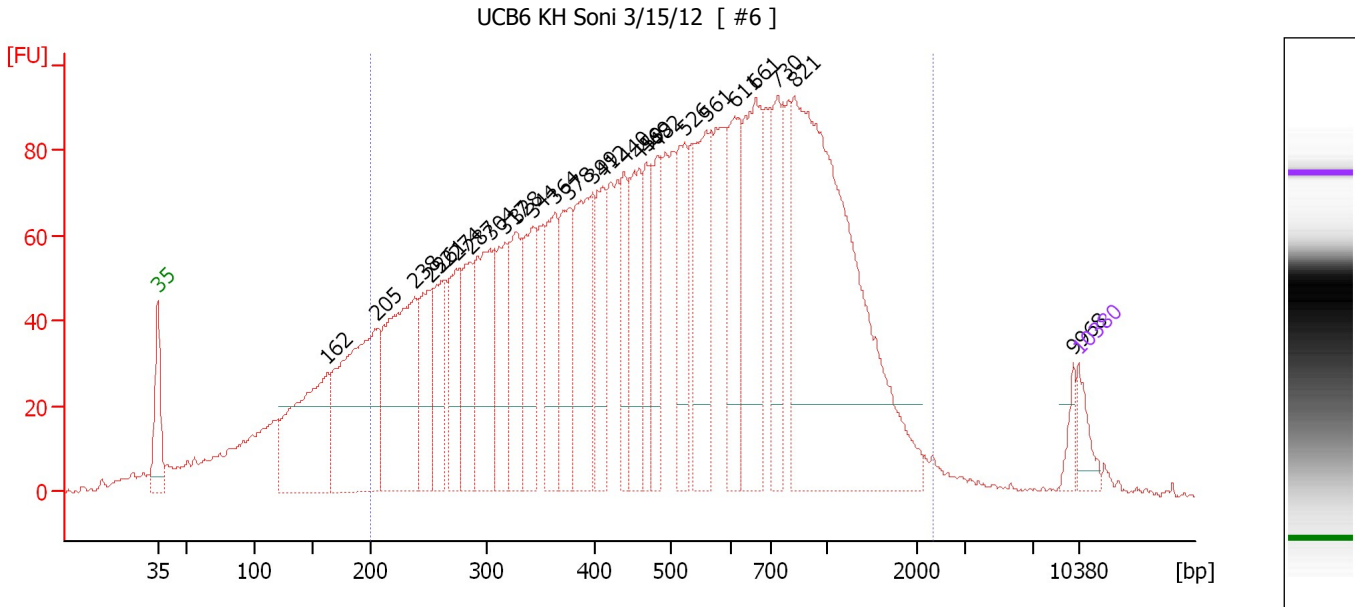
Region table for sample 5 : UCB5 KH Soni 3/15/12

From [bp]	Molarity [pmol/l]	Average Size [bp]	Conc. [pg/μl]	To [bp]	Corr. Area	% of Total	Size distribution in CV [%]	Color
95	63,805.4	392	11,542.10	1,000	4,940.9	94	46.1	Blue

Assay Class: High Sensitivity DNA Assay
 Data Path: C:\...ents and Settings\Bioanalyzer\2012-03-15\2012-03-15_002.xad

Created: 3/15/2012 10:15:12 AM
 Modified: 3/15/2012 12:22:02 PM

Electropherogram Summary Continued ...



Overall Results for sample 6 : UCB6 KH Soni 3/15/12

Number of peaks found: 26 Corr. Area 1: 3,316.9
 Noise: 0.5

Peak table for sample 6 : UCB6 KH Soni 3/15/12

Peak	Size [bp]	Conc. [pg/μl]	Molarity [pmol/l]	Observations
1	35	125.00	5,411.3	Lower Marker
2	162	826.40	7,729.3	
3	205	1,027.84	7,598.5	
4	238	921.75	5,869.4	
5	252	347.60	2,090.0	
6	261	336.85	1,954.3	
7	274	363.00	2,007.4	
8	287	346.13	1,828.5	
9	304	580.59	2,898.2	
10	317	348.22	1,663.5	
11	328	352.87	1,632.1	
12	344	403.31	1,777.2	
13	364	385.34	1,604.0	
14	378	346.52	1,390.2	
15	399	570.21	2,164.7	
16	412	292.08	1,075.2	
17	440	258.52	890.0	
18	459	376.63	1,242.2	
19	469	261.80	846.5	
20	482	284.58	893.9	
21	526	340.67	982.2	
22	561	508.03	1,373.0	
23	611	406.48	1,008.5	
24	661	600.00	1,374.8	
25	730	342.26	710.1	
26	821	2,059.35	3,799.2	

Assay Class: High Sensitivity DNA Assay
Data Path: C:\...ents and Settings\Bioanalyzer\2012-03-15\2012-03-15_002.xad

Created: 3/15/2012 10:15:12 AM
Modified: 3/15/2012 12:22:02 PM

Electropherogram Summary Continued ...**... Peak table for sample 6 : UCB6 KH Soni 3/15/12**

Peak	Size [bp]	Conc. [pg/μl]	Molarity [pmol/l]	Observations
27	9,968	47.13	7.2	
28	▶ 10,380	75.00	10.9	Upper Marker

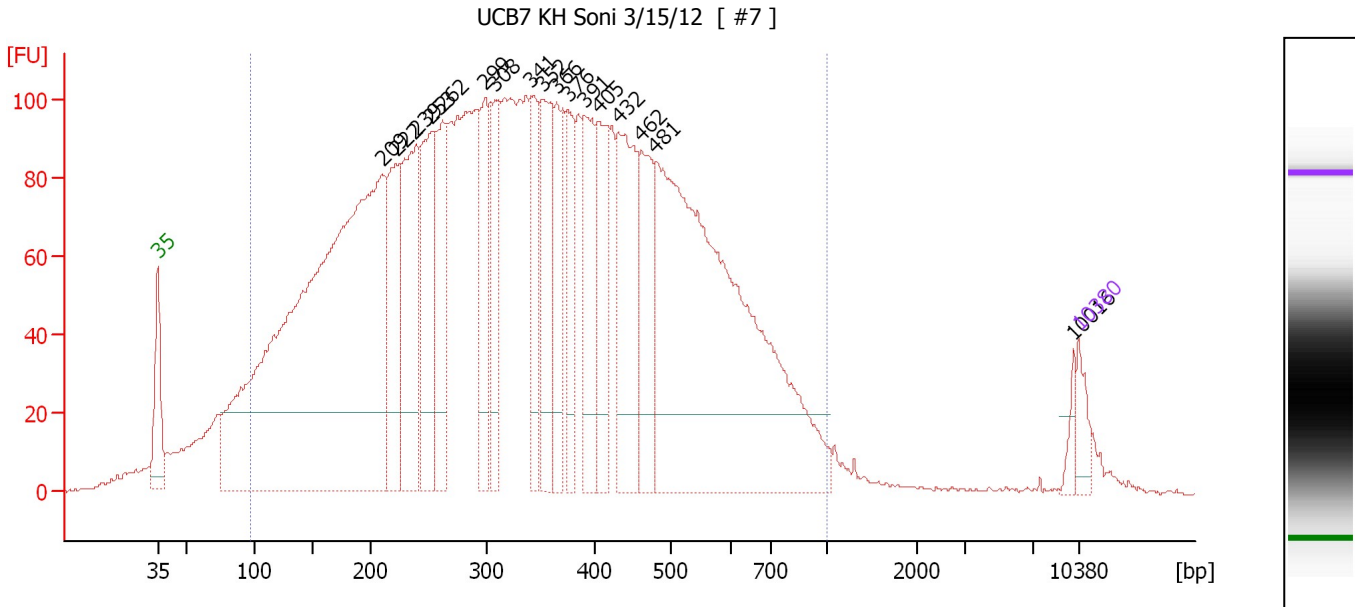
Region table for sample 6 : UCB6 KH Soni 3/15/12

From [bp]	Molarity [pmol/l]	Average Size [bp]	Conc. [pg/μl]	To [bp]	Corr. Area	% of Total	Size distribution in CV [%]	Color
200	49,882.7	593	13,622.58	2,318	3,316.9	85	58.4	■

Assay Class: High Sensitivity DNA Assay
 Data Path: C:\...ents and Settings\Bioanalyzer\2012-03-15\2012-03-15_002.xad

Created: 3/15/2012 10:15:12 AM
 Modified: 3/15/2012 12:22:02 PM

Electropherogram Summary Continued ...



Overall Results for sample 7 : UCB7 KH Soni 3/15/12

Number of peaks found: 17 Corr. Area 1: 4,387.5
 Noise: 0.6

Peak table for sample 7 : UCB7 KH Soni 3/15/12

Peak	Size [bp]	Conc. [pg/μl]	Molarity [pmol/l]	Observations
1	35	125.00	5,411.3	Lower Marker
2	209	4,464.76	32,315.9	
3	222	545.38	3,727.7	
4	239	817.08	5,181.0	
5	253	614.91	3,689.5	
6	262	527.29	3,044.7	
7	299	482.28	2,440.5	
8	308	387.22	1,905.4	
9	341	360.99	1,602.0	
10	352	510.24	2,196.8	
11	366	359.57	1,489.7	
12	376	320.19	1,289.5	
13	391	399.19	1,545.6	
14	405	407.88	1,524.5	
15	432	655.75	2,298.4	
16	462	456.15	1,496.0	
17	481	2,788.13	8,791.0	
18	10,016	44.26	6.7	
19	10,380	75.00	10.9	Upper Marker

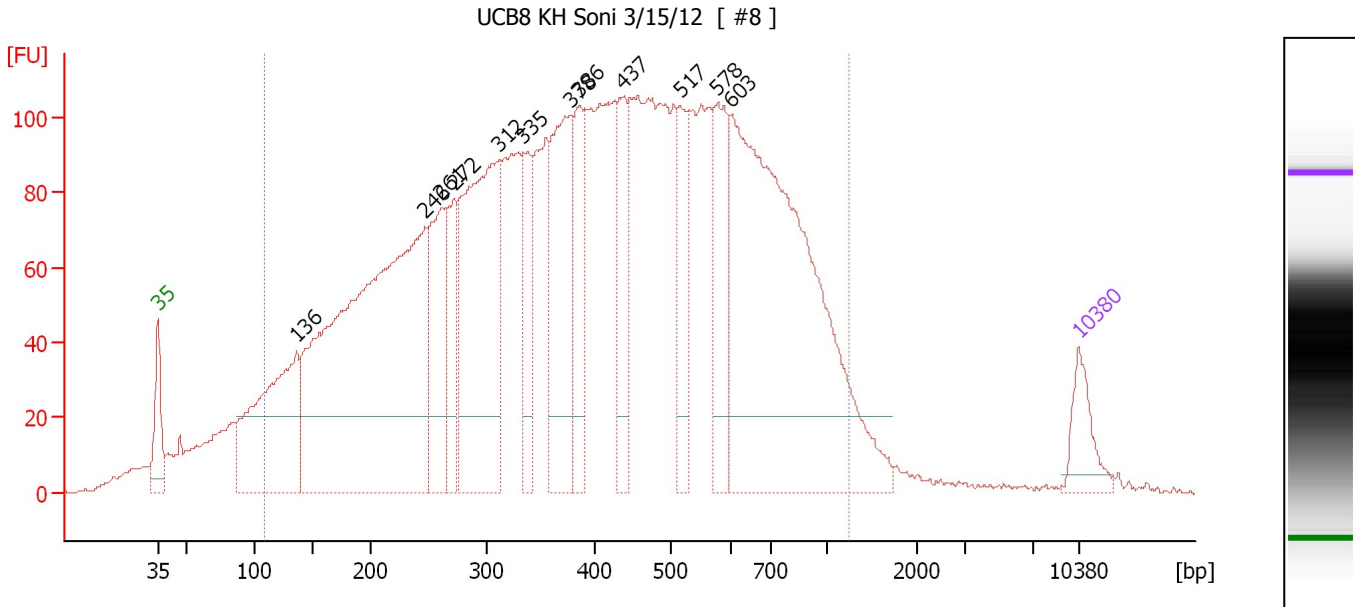
Region table for sample 7 : UCB7 KH Soni 3/15/12

From [bp]	Molarity [pmol/l]	Average Size [bp]	Conc. [pg/μl]	To [bp]	Corr. Area	% of Total	Size distribution in CV [%]	Color
97	102,431.5	359	17,526.30	1,000	4,387.5	93	44.8	Blue

Assay Class: High Sensitivity DNA Assay
 Data Path: C:\...ents and Settings\Bioanalyzer\2012-03-15\2012-03-15_002.xad

Created: 3/15/2012 10:15:12 AM
 Modified: 3/15/2012 12:22:02 PM

Electropherogram Summary Continued ...



Overall Results for sample 8 : UCB8 KH Soni 3/15/12

Number of peaks found: 12 Corr. Area 1: 4,512.2
 Noise: 0.7

Peak table for sample 8 : UCB8 KH Soni 3/15/12

Peak	Size [bp]	Conc. [pg/μl]	Molarity [pmol/l]	Observations
1	35	125.00	5,411.3	Lower Marker
2	136	635.62	7,095.6	
3	246	1,775.31	10,917.9	
4	261	326.69	1,894.6	
5	272	212.95	1,187.1	
6	312	790.81	3,837.3	
7	335	189.12	856.1	
8	378	437.82	1,753.7	
9	386	203.60	798.8	
10	437	223.41	773.9	
11	517	190.97	560.2	
12	578	240.66	630.5	
13	603	1,357.47	3,410.6	
14	10,380	75.00	10.9	Upper Marker

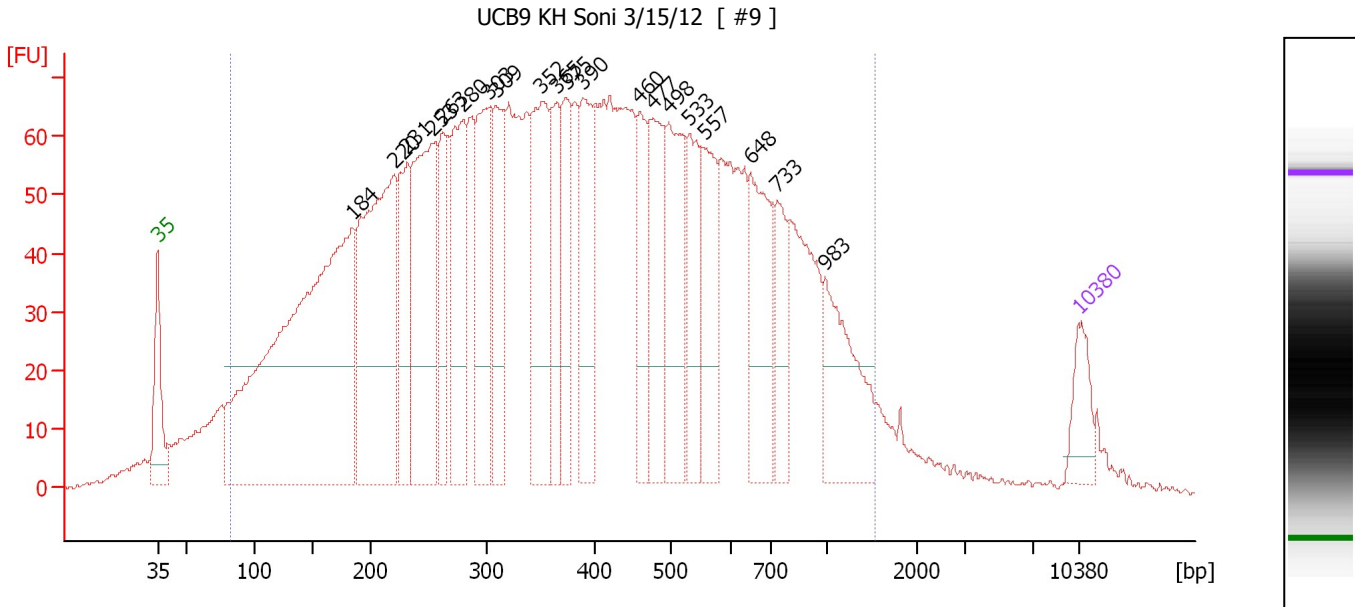
Region table for sample 8 : UCB8 KH Soni 3/15/12

From [bp]	Molarity [pmol/l]	Average Size [bp]	Conc. [pg/μl]	To [bp]	Corr. Area	% of Total	Size distribution in CV [%]	Color
109	45,487.4	440	9,156.67	1,241	4,512.2	92	47.8	Blue

Assay Class: High Sensitivity DNA Assay
 Data Path: C:\...ents and Settings\Bioanalyzer\2012-03-15\2012-03-15_002.xad

Created: 3/15/2012 10:15:12 AM
 Modified: 3/15/2012 12:22:02 PM

Electropherogram Summary Continued ...



Overall Results for sample 9 : UCB9 KH Soni 3/15/12

Number of peaks found: 20 Corr. Area 1: 3,290.7
 Noise: 0.6

Peak table for sample 9 : UCB9 KH Soni 3/15/12

Peak	Size [bp]	Conc. [pg/µl]	Molarity [pmol/l]	Observations
1	35	125.00	5,411.3	Lower Marker
2	184	1,808.88	14,914.5	
3	220	882.14	6,088.2	
4	231	295.46	1,935.3	
5	253	606.31	3,630.9	
6	263	218.31	1,258.0	
7	280	382.04	2,065.2	
8	303	344.41	1,723.5	
9	309	276.69	1,355.1	
10	352	399.20	1,720.3	
11	365	201.39	835.0	
12	375	213.88	864.9	
13	390	288.45	1,121.0	
14	460	197.17	649.1	
15	477	264.35	839.6	
16	498	322.32	979.7	
17	533	224.14	637.7	
18	557	238.12	647.2	
19	648	290.24	678.5	
20	733	145.40	300.4	
21	983	252.21	388.6	
22	10,380	75.00	10.9	Upper Marker

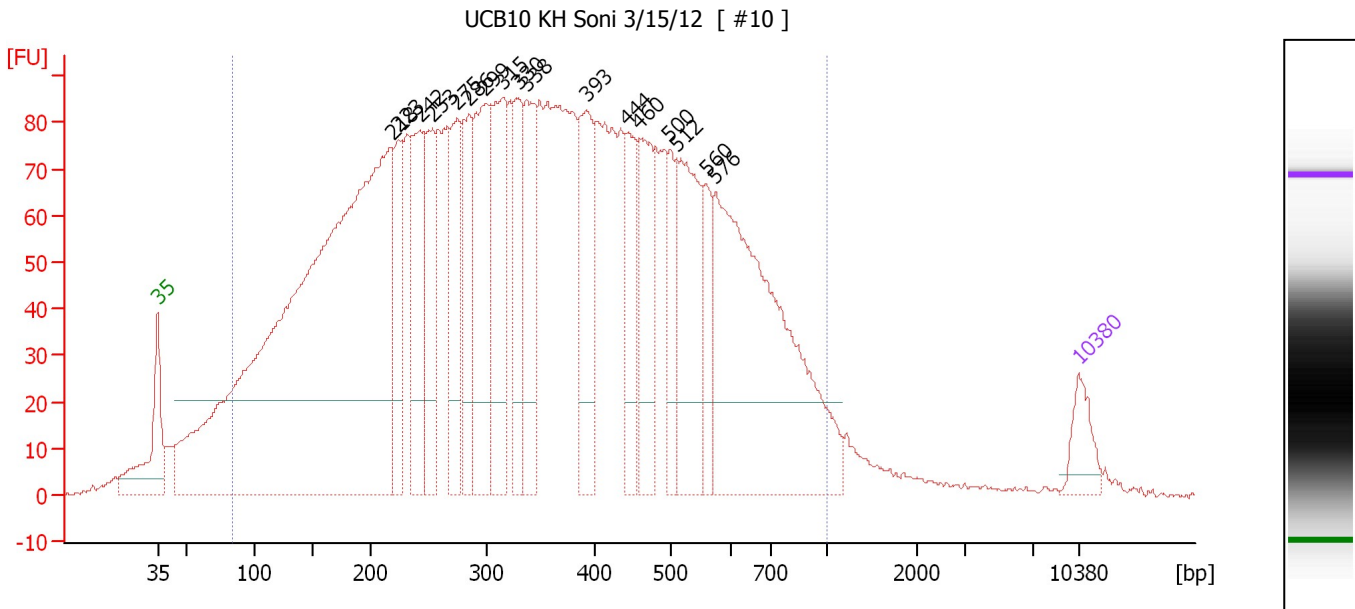
Region table for sample 9 : UCB9 KH Soni 3/15/12

From [bp]	Molarity [pmol/l]	Average Size [bp]	Conc. [pg/µl]	To [bp]	Corr. Area	% of Total	Size distribution in CV [%]	Color
83	61,866.4	429	10,973.59	1,524	3,290.7	93	57.9	Blue

Assay Class: High Sensitivity DNA Assay
 Data Path: C:\...ents and Settings\Bioanalyzer\2012-03-15\2012-03-15_002.xad

Created: 3/15/2012 10:15:12 AM
 Modified: 3/15/2012 12:22:02 PM

Electropherogram Summary Continued ...



Overall Results for sample 10 : UCB10 KH Soni 3/15/12

Number of peaks found: 17 Corr. Area 1: 3,972.7
 Noise: 0.3

Peak table for sample 10 : UCB10 KH Soni 3/15/12

Peak	Size [bp]	Conc. [pg/μl]	Molarity [pmol/l]	Observations
1	35	125.00	5,411.3	Lower Marker
2	218	3,628.06	25,216.7	
3	223	283.83	1,928.8	
4	242	385.39	2,410.9	
5	253	335.89	2,013.5	
6	275	345.93	1,905.2	
7	286	302.18	1,602.7	
8	299	499.45	2,528.2	
9	315	450.93	2,168.0	
10	330	266.29	1,223.8	
11	338	315.25	1,414.8	
12	393	332.70	1,282.3	
13	444	242.42	826.5	
14	460	304.45	1,002.1	
15	500	168.23	510.3	
16	512	436.15	1,289.5	
17	560	139.25	376.7	
18	576	1,151.30	3,031.0	
19	10,380	75.00	10.9	Upper Marker

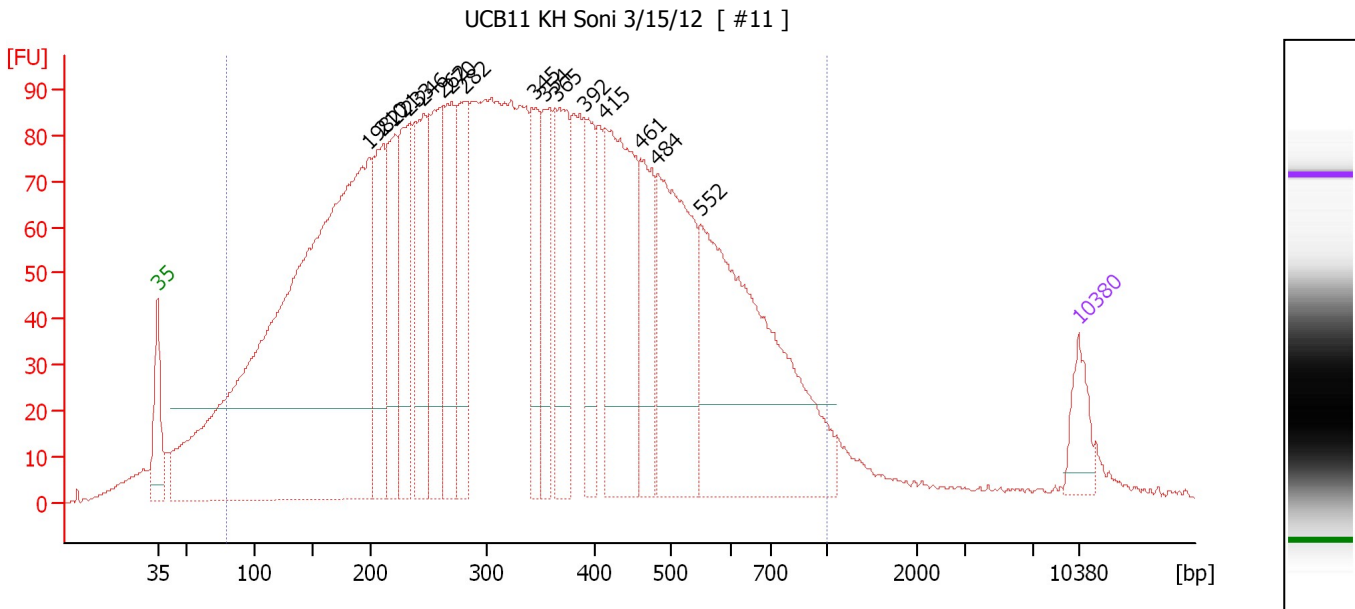
Region table for sample 10 : UCB10 KH Soni 3/15/12

From [bp]	Molarity [pmol/l]	Average Size [bp]	Conc. [pg/μl]	To [bp]	Corr. Area	% of Total	Size distribution in CV [%]	Color
85	75,998.1	369	12,601.26	1,000	3,972.7	94	47.7	Blue

Assay Class: High Sensitivity DNA Assay
 Data Path: C:\...ents and Settings\Bioanalyzer\2012-03-15\2012-03-15_002.xad

Created: 3/15/2012 10:15:12 AM
 Modified: 3/15/2012 12:22:02 PM

Electropherogram Summary Continued ...



Overall Results for sample 11 : UCB11 KH Soni 3/15/12

Number of peaks found: 16 Corr. Area 1: 4,069.4
 Noise: 0.3

Peak table for sample 11 : UCB11 KH Soni 3/15/12

Peak	Size [bp]	Conc. [pg/μl]	Molarity [pmol/l]	Observations
1	35	125.00	5,411.3	Lower Marker
2	198	3,180.52	24,279.6	
3	210	368.01	2,652.2	
4	221	328.65	2,255.4	
5	233	369.98	2,404.1	
6	246	387.66	2,391.8	
7	262	420.59	2,435.2	
8	270	359.19	2,017.6	
9	282	311.93	1,675.1	
10	345	247.72	1,088.0	
11	354	210.32	901.3	
12	365	345.53	1,435.2	
13	392	229.43	885.7	
14	415	656.54	2,399.5	
15	461	260.23	854.9	
16	484	621.89	1,948.6	
17	552	1,057.37	2,904.9	
18	10,380	75.00	10.9	Upper Marker

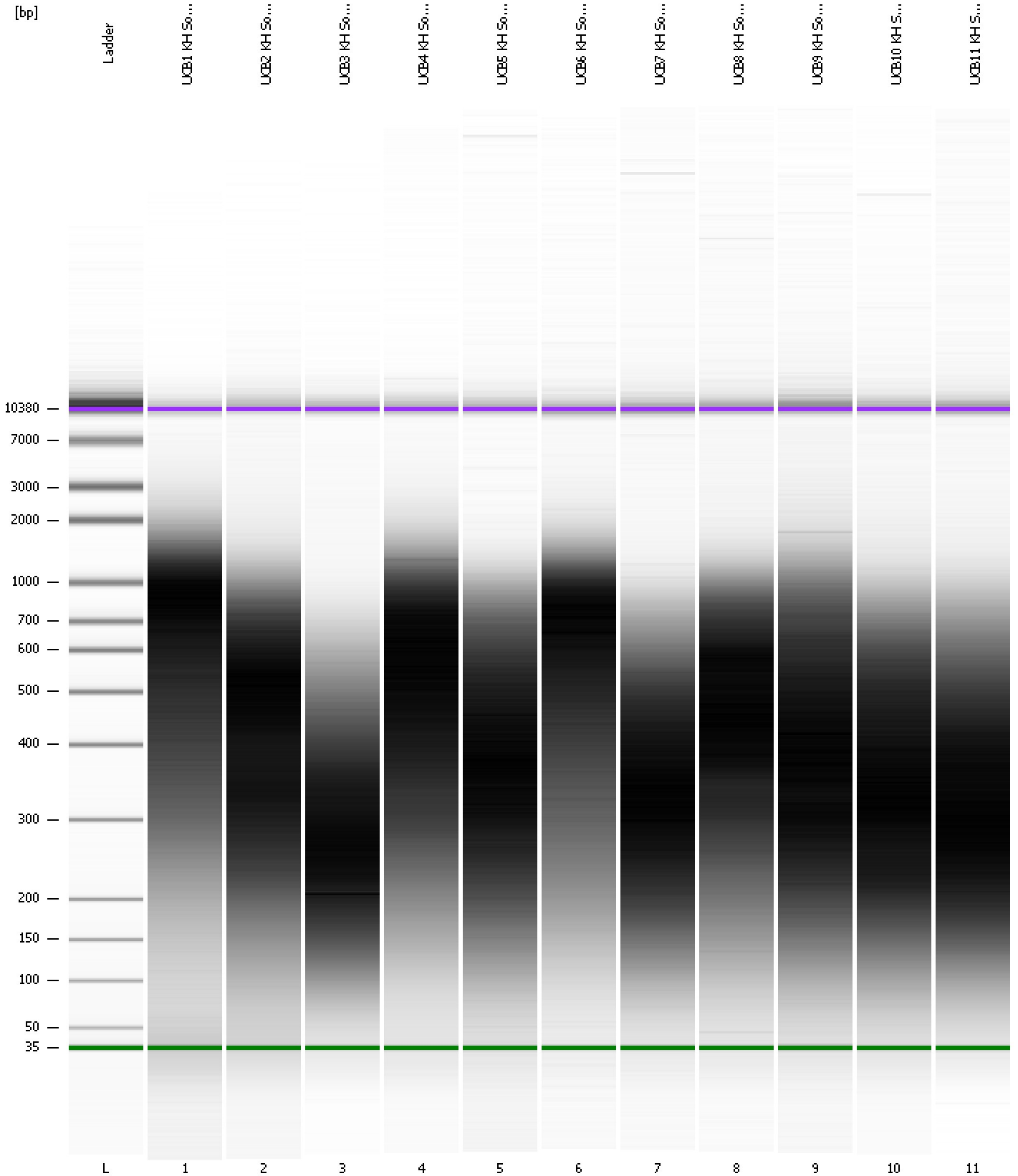
Region table for sample 11 : UCB11 KH Soni 3/15/12

From [bp]	Molarity [pmol/l]	Average Size [bp]	Conc. [pg/μl]	To [bp]	Corr. Area	% of Total	Size distribution in CV [%]	Color
80	74,071.7	353	11,761.33	1,000	4,069.4	93	48.2	Blue

Assay Class: High Sensitivity DNA Assay
Data Path: C:\...ents and Settings\Bioanalyzer\2012-03-15\2012-03-15_002.xad

Created: 3/15/2012 10:15:12 AM
Modified: 3/15/2012 12:22:02 PM

Gel Image



Assay Class: High Sensitivity DNA Assay
 Data Path: C:\...ents and Settings\Bioanalyzer\2012-03-15\2012-03-15_002.xad

Created: 3/15/2012 10:15:12 AM
 Modified: 3/15/2012 12:22:02 PM

Run Logbook

Description	Number	Source	Category	Sub Category	Time	Time Zone	User	Host
Run ended on port 1 (Number of wells acquired: 12)		Instrument	Run		3/15/2012 10:56:31 AM	(GMT --07:00) Pacific Standard Time	UC Davis	D8XSMGH1
Run started on port 1 (File: C:\Documents and Settings\Bioanalyzer\2012-03-15\2012-03-15_002.xad)		Instrument	Run		3/15/2012 10:15:17 AM	(GMT --07:00) Pacific Standard Time	UC Davis	D8XSMGH1
Product Number : G2938B		Instrument	Run		3/15/2012 10:15:17 AM	(GMT --07:00) Pacific Standard Time	UC Davis	D8XSMGH1
Name :		Instrument	Run		3/15/2012 10:15:17 AM	(GMT --07:00) Pacific Standard Time	UC Davis	D8XSMGH1
Vendor : Agilent Technologies		Instrument	Run		3/15/2012 10:15:17 AM	(GMT --07:00) Pacific Standard Time	UC Davis	D8XSMGH1
Serial# : DE13701086		Instrument	Run		3/15/2012 10:15:17 AM	(GMT --07:00) Pacific Standard Time	UC Davis	D8XSMGH1
Firmware : C.01.069		Instrument	Run		3/15/2012 10:15:17 AM	(GMT --07:00) Pacific Standard Time	UC Davis	D8XSMGH1
Cartridge : Electrode		Instrument	Run		3/15/2012 10:15:17 AM	(GMT --07:00) Pacific Standard Time	UC Davis	D8XSMGH1