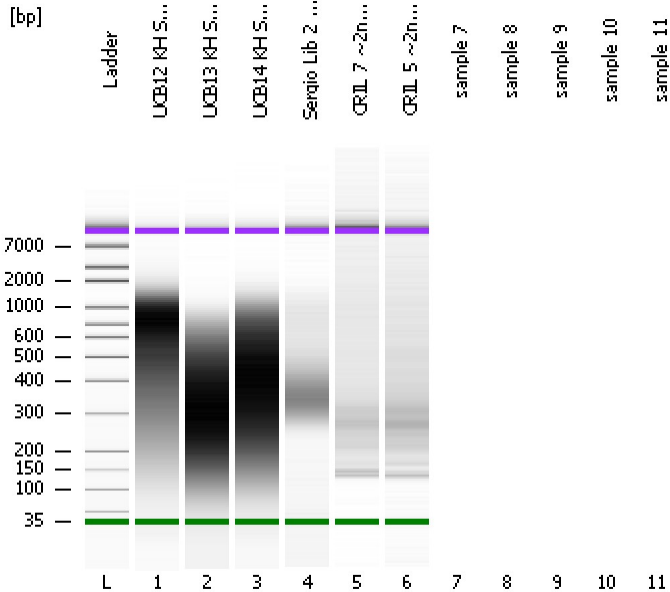


Assay Class: High Sensitivity DNA Assay
Data Path: C:\...ents and Settings\Bioanalyzer\2012-03-15\2012-03-15_003.xad

Created: 3/15/2012 11:08:00 AM
Modified: 3/15/2012 12:17:32 PM

Electrophoresis File Run Summary



Instrument Information:

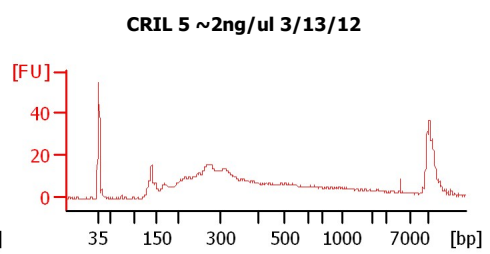
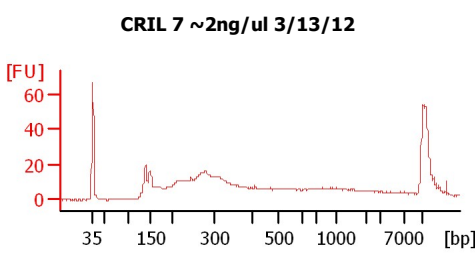
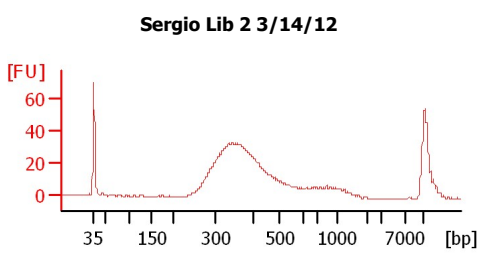
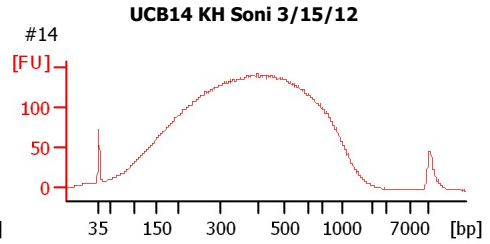
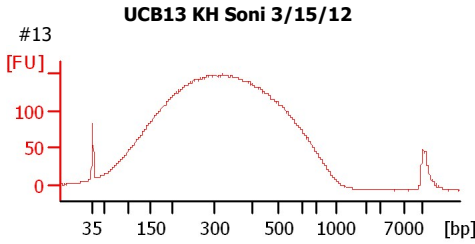
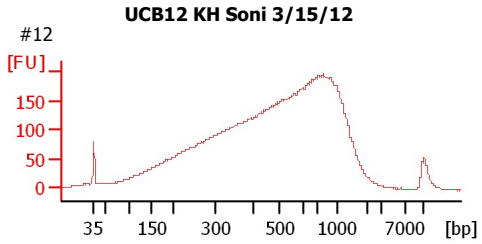
Instrument Name: DE13701086 Firmware: C.01.069
Serial#: DE13701086 Type: G2938B

Assay Information:

Assay Origin Path: C:\Program Files\Agilent\2100 bioanalyzer\2100 expert\assays\dsDNA\High Sensitivity DNA.xsy
Assay Class: High Sensitivity DNA Assay
Version: 1.03
Assay Comments: Copyright © 2003-2010 Agilent Technologies

Chip Information:

Chip Lot #:
Reagent Kit Lot #:
Chip Comments:



Assay Class: High Sensitivity DNA Assay
Data Path: C:\...ents and Settings\Bioanalyzer\2012-03-15\2012-03-15_003.xad

Created: 3/15/2012 11:08:00 AM
Modified: 3/15/2012 12:17:32 PM

Electrophoresis File Run Summary (Chip Summary)

Sample Name	Sample Comment	Rest. Digest	Status	Observation	Result Label	Result Color
UCB12 KH Soni 3/15/12	#12	<input type="checkbox"/>	✓			
UCB13 KH Soni 3/15/12	#13	<input type="checkbox"/>	✓			
UCB14 KH Soni 3/15/12	#14	<input type="checkbox"/>	✓			
Sergio Lib 2 3/14/12		<input type="checkbox"/>	✓			
CRIL 7 ~2ng/ul 3/13/12		<input type="checkbox"/>	✓			
CRIL 5 ~2ng/ul 3/13/12		<input type="checkbox"/>	✓			
sample 7		<input type="checkbox"/>				
sample 8		<input type="checkbox"/>				
sample 9		<input type="checkbox"/>				
sample 10		<input type="checkbox"/>				
sample 11		<input type="checkbox"/>				
Ladder		<input type="checkbox"/>	✓			

Chip Lot #

Reagent Kit Lot #

Chip Comments :

Assay Class: High Sensitivity DNA Assay
 Data Path: C:\...ents and Settings\Bioanalyzer\2012-03-15\2012-03-15_003.xad

Created: 3/15/2012 11:08:00 AM
 Modified: 3/15/2012 12:17:32 PM

Electrophoresis Assay Details

General Analysis Settings

Number of Available Sample and Ladder Wells (Max.) : 12
 Minimum Visible Range [s] : 32
 Maximum Visible Range [s] : 138
 Start Analysis Time Range [s] : 33
 End Analysis Time Range [s] : 137.5
 Ladder Concentration [pg/μl] : 1950
 Uses Standard Area for Ladder Fragments
 Lower Marker Concentration [pg/μl] : 125
 Upper Marker Concentration [pg/μl] : 75
 Used Upper Marker for Quantitation
 Standard Curve Fit is Point to Point
 Show Data Aligned to Lower and Upper Marker

Integrator Settings

Integration Start Time [s] : 33.05
 Integration End Time [s] : 137
 Slope Threshold : 0.8
 Height Threshold [FU] : 5
 Area Threshold : 0.1
 Width Threshold [s] : 0.6
 Baseline Plateau [s] : 0.5

Filter Settings

Filter Width [s] : 0.5
 Polynomial Order : 4

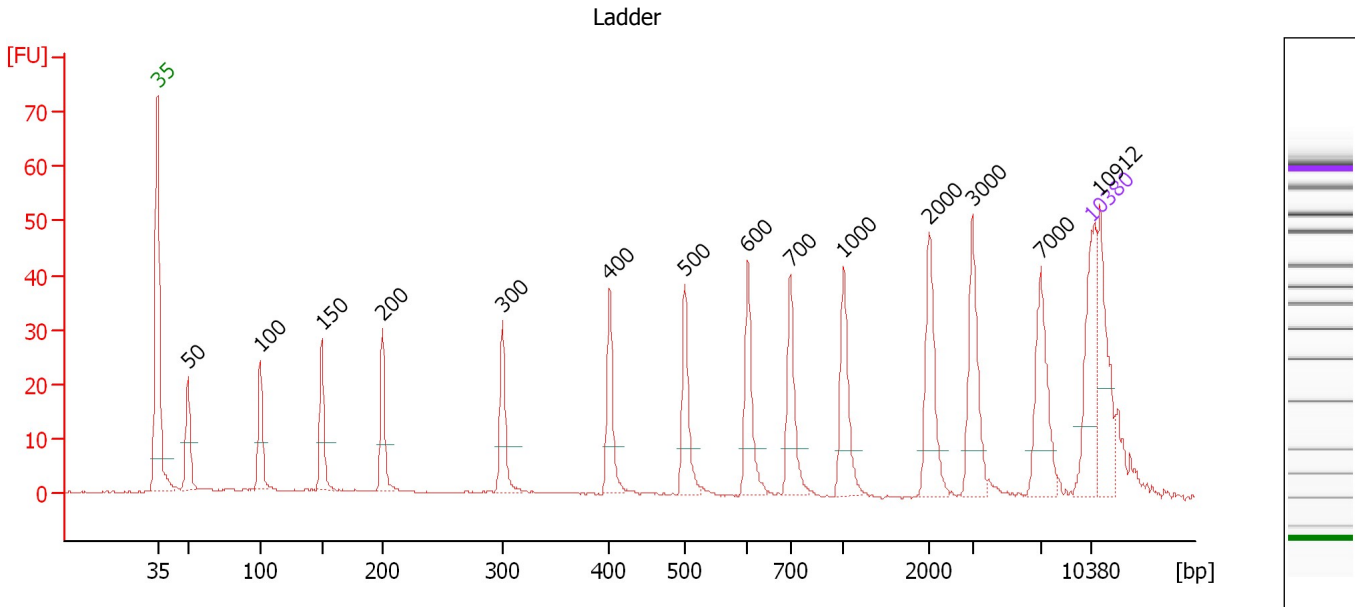
Ladder

Ladder Peak	Size	Area
1	35	160
2	50	210
3	100	208
4	150	221
5	200	242
6	300	270
7	400	305
8	500	306
9	600	336
10	700	321
11	1000	366
12	2000	413
13	3000	411
14	7000	400
15	10380	214

Assay Class: High Sensitivity DNA Assay
 Data Path: C:\...ents and Settings\Bioanalyzer\2012-03-15\2012-03-15_003.xad

Created: 3/15/2012 11:08:00 AM
 Modified: 3/15/2012 12:17:32 PM

Electropherogram Summary



Overall Results for Ladder

Noise: 0.1

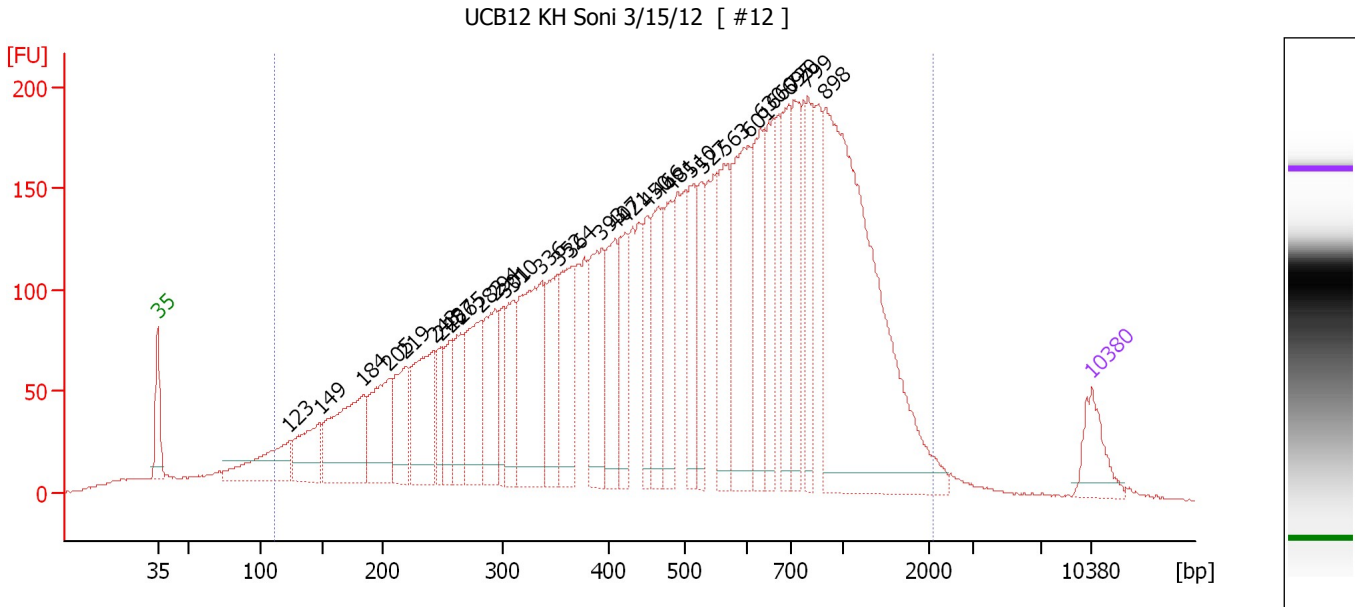
Peak table for Ladder

Peak	Size [bp]	Conc. [pg/μl]	Molarity [pmol/l]	Observations
1	35	125.00	5,411.3	Lower Marker
2	50	150.00	4,545.5	Ladder Peak
3	100	150.00	2,272.7	Ladder Peak
4	150	150.00	1,515.2	Ladder Peak
5	200	150.00	1,136.4	Ladder Peak
6	300	150.00	757.6	Ladder Peak
7	400	150.00	568.2	Ladder Peak
8	500	150.00	454.5	Ladder Peak
9	600	150.00	378.8	Ladder Peak
10	700	150.00	324.7	Ladder Peak
11	1,000	150.00	227.3	Ladder Peak
12	2,000	150.00	113.6	Ladder Peak
13	3,000	150.00	75.8	Ladder Peak
14	7,000	150.00	32.5	Ladder Peak
15	10,380	75.00	10.9	Upper Marker
16	10,912	0.00	0.0	

Assay Class: High Sensitivity DNA Assay
 Data Path: C:\...ents and Settings\Bioanalyzer\2012-03-15\2012-03-15_003.xad

Created: 3/15/2012 11:08:00 AM
 Modified: 3/15/2012 12:17:32 PM

Electropherogram Summary Continued ...



Setpoint Deviations for sample 1 : UCB12 KH Soni 3/15/12

Height Threshold [FU] : 10

Overall Results for sample 1 : UCB12 KH Soni 3/15/12

Number of peaks found: 32 Corr. Area 1: 7,012.7
 Noise: 0.3

Peak table for sample 1 : UCB12 KH Soni 3/15/12

Peak	Size [bp]	Conc. [pg/μl]	Molarity [pmol/l]	Observations
1	35	125.00	5,411.3	Lower Marker
2	123	209.99	2,581.3	
3	149	177.33	1,808.6	
4	184	357.70	2,942.4	
5	205	245.64	1,811.1	
6	219	178.23	1,234.5	
7	243	282.31	1,761.6	
8	248	93.02	567.8	
9	257	116.60	688.6	
10	265	135.21	771.9	
11	282	247.03	1,329.1	
12	294	200.71	1,034.8	
13	301	106.33	534.5	
14	310	148.85	728.4	
15	336	405.86	1,830.2	
16	352	186.44	802.7	
17	364	215.55	897.2	
18	393	252.97	976.4	
19	407	194.97	725.2	
20	421	154.29	554.8	
21	450	132.53	446.0	
22	466	212.25	690.4	

Assay Class: High Sensitivity DNA Assay
 Data Path: C:\...ents and Settings\Bioanalyzer\2012-03-15\2012-03-15_003.xad


Created: 3/15/2012 11:08:00 AM
 Modified: 3/15/2012 12:17:32 PM

Electropherogram Summary Continued ...

... Peak table for sample 1 : UCB12 KH Soni 3/15/12

Peak	Size [bp]	Conc. [pg/μl]	Molarity [pmol/l]	Observations
23	481	175.93	554.6	
24	510	171.18	509.0	
25	527	128.73	369.9	
26	563	237.04	638.0	
27	601	352.54	889.3	
28	630	227.34	547.1	
29	660	172.06	395.0	
30	695	190.13	414.8	
31	720	179.97	378.8	
32	799	161.40	306.1	
33	898	1,064.35	1,796.3	
34	▶ 10,380	75.00	10.9	Upper Marker

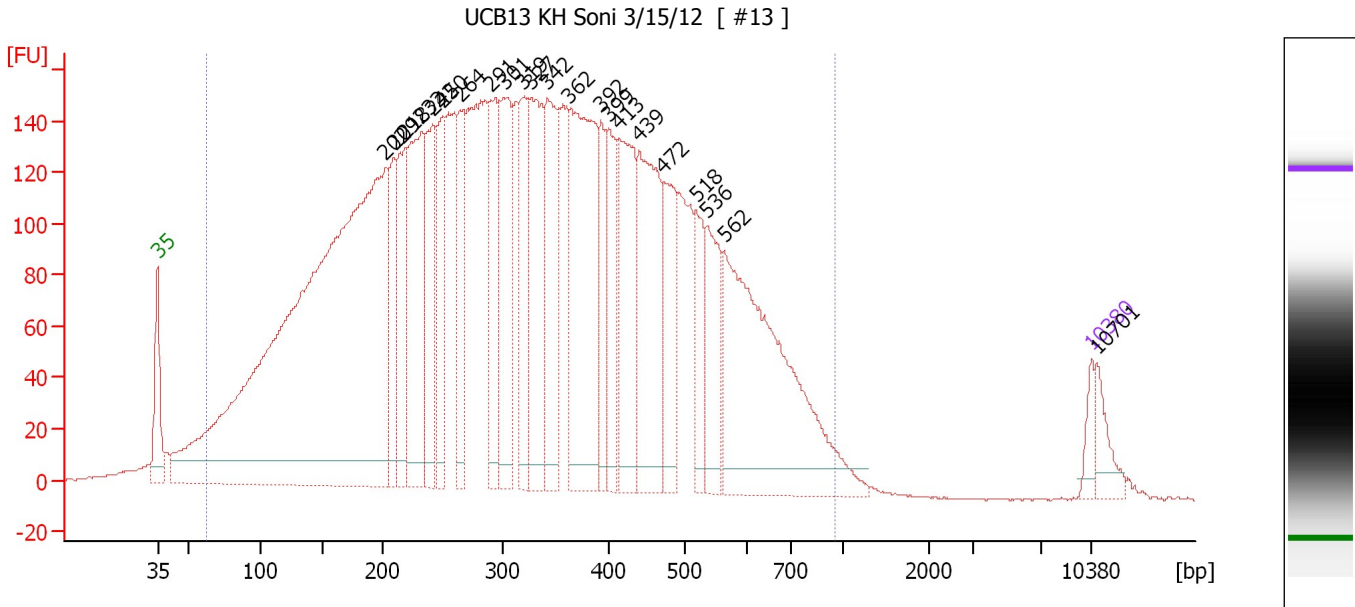
Region table for sample 1 : UCB12 KH Soni 3/15/12

From [bp]	Molarity [pmol/l]	Average Size [bp]	Conc. [pg/μl]	To [bp]	Corr. Area	% of Total	Size distribution in CV [%]	Color
112	36,879.6	590	8,843.68	2,106	7,012.7	95	59.4	

Assay Class: High Sensitivity DNA Assay
 Data Path: C:\...ents and Settings\Bioanalyzer\2012-03-15\2012-03-15_003.xad

Created: 3/15/2012 11:08:00 AM
 Modified: 3/15/2012 12:17:32 PM

Electropherogram Summary Continued ...



Setpoint Deviations for sample 2 : UCB13 KH Soni 3/15/12

Height Threshold [FU] : 10

Overall Results for sample 2 : UCB13 KH Soni 3/15/12

Number of peaks found: 22 Corr. Area 1: 7,319.8
 Noise: 0.3


Peak table for sample 2 : UCB13 KH Soni 3/15/12

Peak	Size [bp]	Conc. [pg/μl]	Molarity [pmol/l]	Observations
1	35	125.00	5,411.3	Lower Marker
2	202	7,186.46	53,900.8	
3	209	519.58	3,764.5	
4	218	722.65	5,016.5	
5	232	1,125.97	7,338.0	
6	242	688.49	4,317.1	
7	250	567.64	3,436.5	
8	264	601.51	3,445.7	
9	291	659.16	3,433.1	
10	301	834.06	4,195.7	
11	319	619.86	2,945.9	
12	327	888.13	4,118.1	
13	342	816.23	3,615.0	
14	362	1,540.35	6,447.4	
15	392	372.52	1,439.5	
16	399	497.71	1,890.4	
17	413	821.51	3,014.1	
18	439	1,005.33	3,471.5	
19	472	515.62	1,655.7	
20	518	345.08	1,010.2	
21	536	467.30	1,321.0	
22	562	1,878.27	5,062.5	


Assay Class: High Sensitivity DNA Assay
Data Path: C:\...ents and Settings\Bioanalyzer\2012-03-15\2012-03-15_003.xad

Created: 3/15/2012 11:08:00 AM
Modified: 3/15/2012 12:17:32 PM

Electropherogram Summary Continued ...**... Peak table for sample 2 : UCB13 KH Soni 3/15/12**

Peak	Size [bp]	Conc. [pg/ μ l]	Molarity [pmol/l]	Observations
23	 10,380	75.00	10.9	Upper Marker
24	10,701	0.00	0.0	

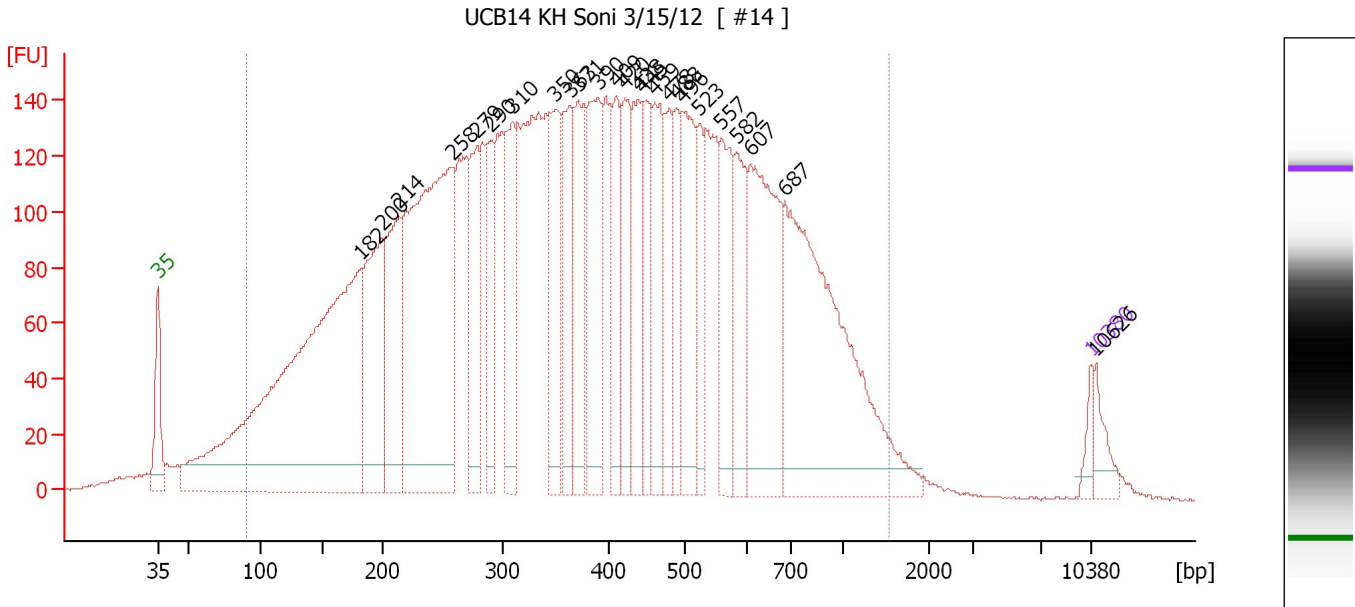
Region table for sample 2 : UCB13 KH Soni 3/15/12

From [bp]	Molarity [pmol/l]	Average Size [bp]	Conc. [pg/ μ l]	To [bp]	Corr. Area	% of Total	Size distribution in CV [%]	Color
62	178,290.1	341	27,186.94	954	7,319.8	97	46.0	

Assay Class: High Sensitivity DNA Assay
 Data Path: C:\...ents and Settings\Bioanalyzer\2012-03-15\2012-03-15_003.xad

Created: 3/15/2012 11:08:00 AM
 Modified: 3/15/2012 12:17:32 PM

Electropherogram Summary Continued ...



Setpoint Deviations for sample 3 : UCB14 KH Soni 3/15/12

Height Threshold [FU] : 10

Overall Results for sample 3 : UCB14 KH Soni 3/15/12

Number of peaks found: 25 Corr. Area 1: 6,933.1
 Noise: 0.4

Peak table for sample 3 : UCB14 KH Soni 3/15/12


Peak	Size [bp]	Conc. [pg/μl]	Molarity [pmol/l]	Observations
1	35	125.00	5,411.3	Lower Marker
2	182	5,118.30	42,513.2	
3	200	1,292.58	9,781.5	
4	214	1,033.22	7,325.5	
5	258	3,296.31	19,375.4	
6	279	786.79	4,272.4	
7	290	540.61	2,820.3	
8	310	743.48	3,638.6	
9	350	744.71	3,227.5	
10	363	727.24	3,036.0	
11	371	684.08	2,793.4	
12	390	919.50	3,575.9	
13	409	534.64	1,980.0	
14	420	600.66	2,167.8	
15	438	591.00	2,044.7	
16	445	554.43	1,886.3	
17	459	643.18	2,121.6	
18	478	494.61	1,566.9	
19	488	459.39	1,425.9	
20	496	768.32	2,345.2	
21	523	389.79	1,128.5	
22	557	622.61	1,693.7	

Assay Class: High Sensitivity DNA Assay
 Data Path: C:\...ents and Settings\Bioanalyzer\2012-03-15\2012-03-15_003.xad


Created: 3/15/2012 11:08:00 AM
 Modified: 3/15/2012 12:17:32 PM

Electropherogram Summary Continued ...

... Peak table for sample 3 : UCB14 KH Soni 3/15/12

Peak	Size [bp]	Conc. [pg/μl]	Molarity [pmol/l]	Observations
23	582	551.54	1,436.6	
24	607	1,275.92	3,187.0	
25	687	2,449.61	5,404.5	
26	 10,380	75.00	10.9	Upper Marker
27	10,626	0.00	0.0	

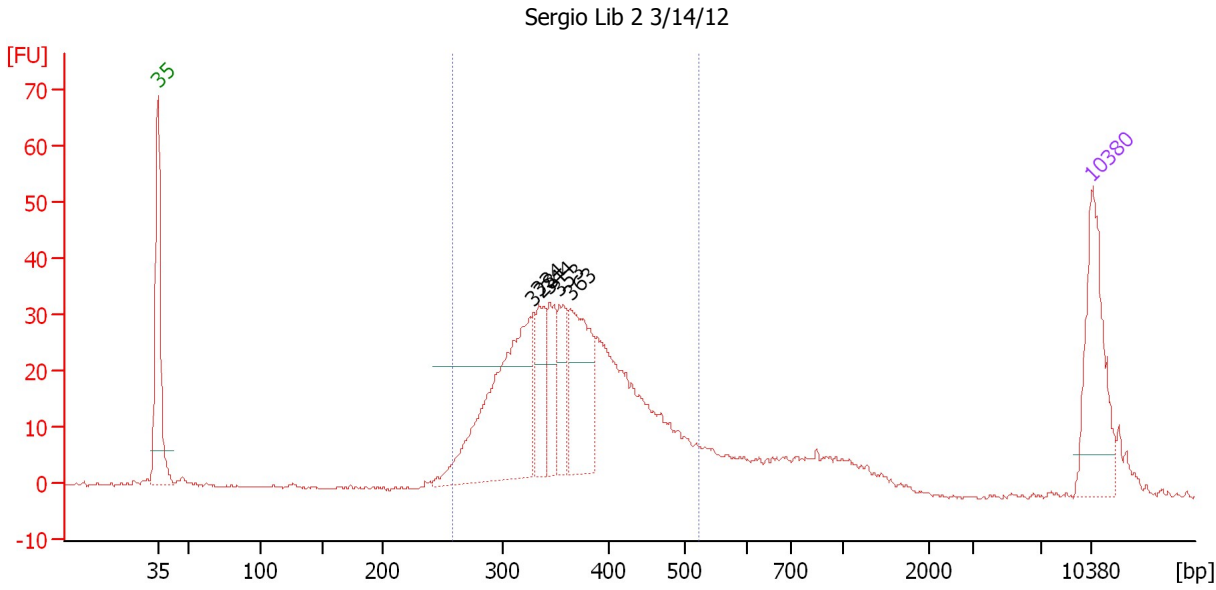
Region table for sample 3 : UCB14 KH Soni 3/15/12

From [bp]	Molarity [pmol/l]	Average Size [bp]	Conc. [pg/μl]	To [bp]	Corr. Area	% of Total	Size distribution in CV [%]	Color
90	168,252.2	424	31,060.88	1,520	6,933.1	95	53.6	

Assay Class: High Sensitivity DNA Assay
 Data Path: C:\...ents and Settings\Bioanalyzer\2012-03-15\2012-03-15_003.xad

Created: 3/15/2012 11:08:00 AM
 Modified: 3/15/2012 12:17:32 PM

Electropherogram Summary Continued ...



Setpoint Deviations for sample 4 : Sergio Lib 2 3/14/12

Height Threshold [FU] : 20

Overall Results for sample 4 : Sergio Lib 2 3/14/12

Number of peaks found: 5 Corr. Area 1: 534.3
 Noise: 0.3

Peak table for sample 4 : Sergio Lib 2 3/14/12

Peak	Size [bp]	Conc. [pg/μl]	Molarity [pmol/l]	Observations
1	35	125.00	5,411.3	Lower Marker
2	328	228.81	1,055.7	
3	334	56.60	257.0	
4	344	46.79	206.0	
5	353	48.24	207.1	
6	363	105.52	440.1	
7	10,380	75.00	10.9	Upper Marker

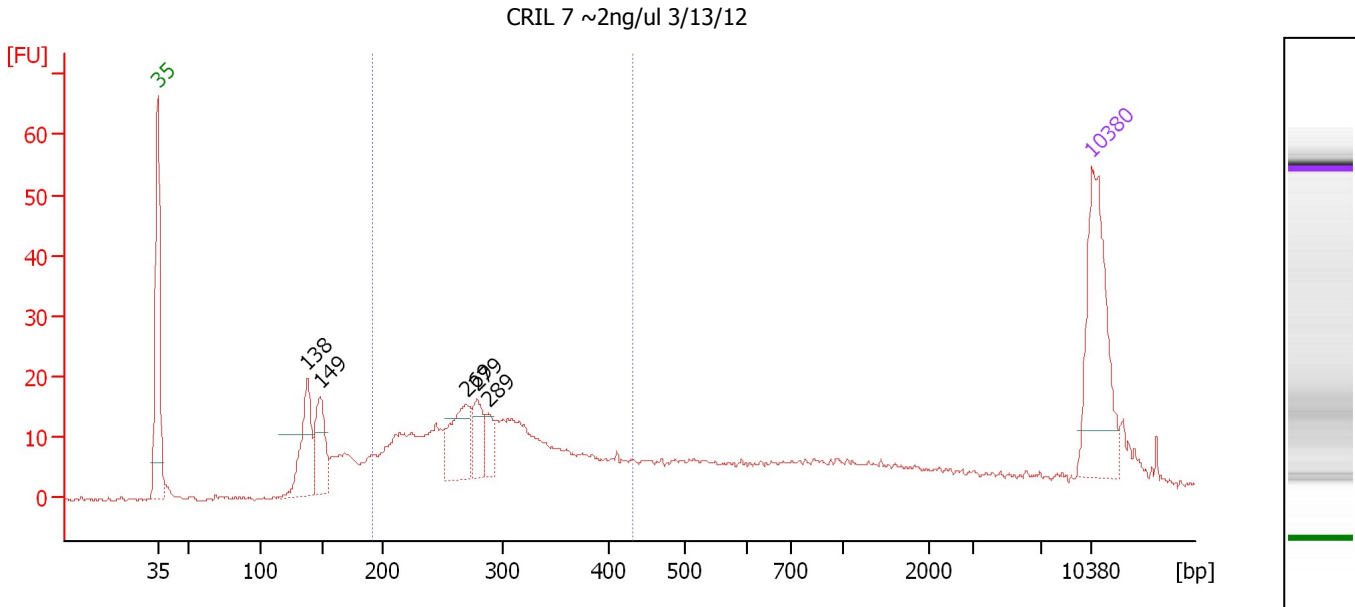
Region table for sample 4 : Sergio Lib 2 3/14/12

From [bp]	Molarity [pmol/l]	Average Size [bp]	Conc. [pg/μl]	To [bp]	Corr. Area	% of Total	Size distribution in CV [%]	Color
259	3,275.6	367	768.19	524	534.3	81	16.2	Blue

Assay Class: High Sensitivity DNA Assay
 Data Path: C:\...ents and Settings\Bioanalyzer\2012-03-15\2012-03-15_003.xad

Created: 3/15/2012 11:08:00 AM
 Modified: 3/15/2012 12:17:32 PM

Electropherogram Summary Continued ...



Setpoint Deviations for sample 5 : CRIL 7 ~2ng/ul 3/13/12

Height Threshold [FU] : 10

Overall Results for sample 5 : CRIL 7 ~2ng/ul 3/13/12

Number of peaks found: 5 Corr. Area 1: 297.2
 Noise: 0.3

Peak table for sample 5 : CRIL 7 ~2ng/ul 3/13/12

Peak	Size [bp]	Conc. [pg/μl]	Molarity [pmol/l]	Observations
1	35	125.00	5,411.3	Lower Marker
2	138	60.53	663.0	
3	149	47.88	486.4	
4	269	50.47	283.8	
5	279	26.65	144.7	
6	289	15.39	80.6	
7	10,380	75.00	10.9	Upper Marker

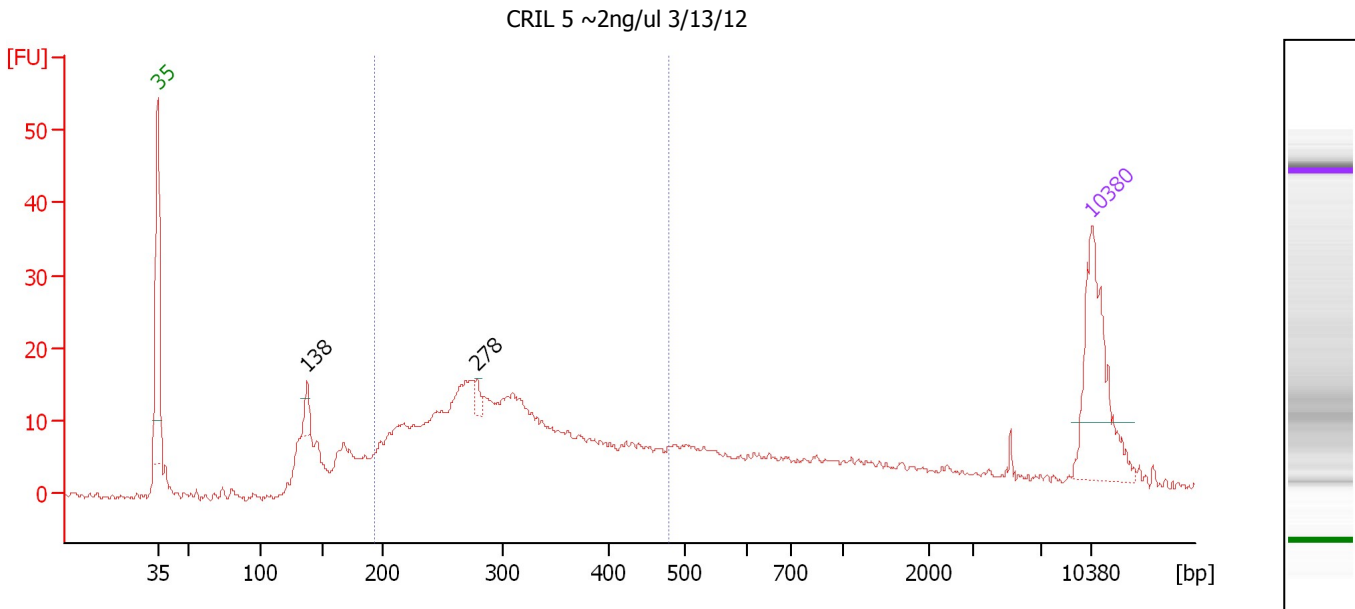
Region table for sample 5 : CRIL 7 ~2ng/ul 3/13/12

From [bp]	Molarity [pmol/l]	Average Size [bp]	Conc. [pg/μl]	To [bp]	Corr. Area	% of Total	Size distribution in CV [%]	Color
192	2,468.9	293	453.82	430	297.2	48	20.3	Blue

Assay Class: High Sensitivity DNA Assay
 Data Path: C:\...ents and Settings\Bioanalyzer\2012-03-15\2012-03-15_003.xad

Created: 3/15/2012 11:08:00 AM
 Modified: 3/15/2012 12:17:32 PM

Electropherogram Summary Continued ...



Overall Results for sample 6 : CRIL 5 ~2ng/ul 3/13/12

Number of peaks found: 2 Corr. Area 1: 307.8
 Noise: 0.5

Peak table for sample 6 : CRIL 5 ~2ng/ul 3/13/12

Peak	Size [bp]	Conc. [pg/μl]	Molarity [pmol/l]	Observations
1	35	125.00	5,411.3	Lower Marker
2	138	15.00	164.1	
3	278	9.27	50.4	
4	10,380	75.00	10.9	Upper Marker

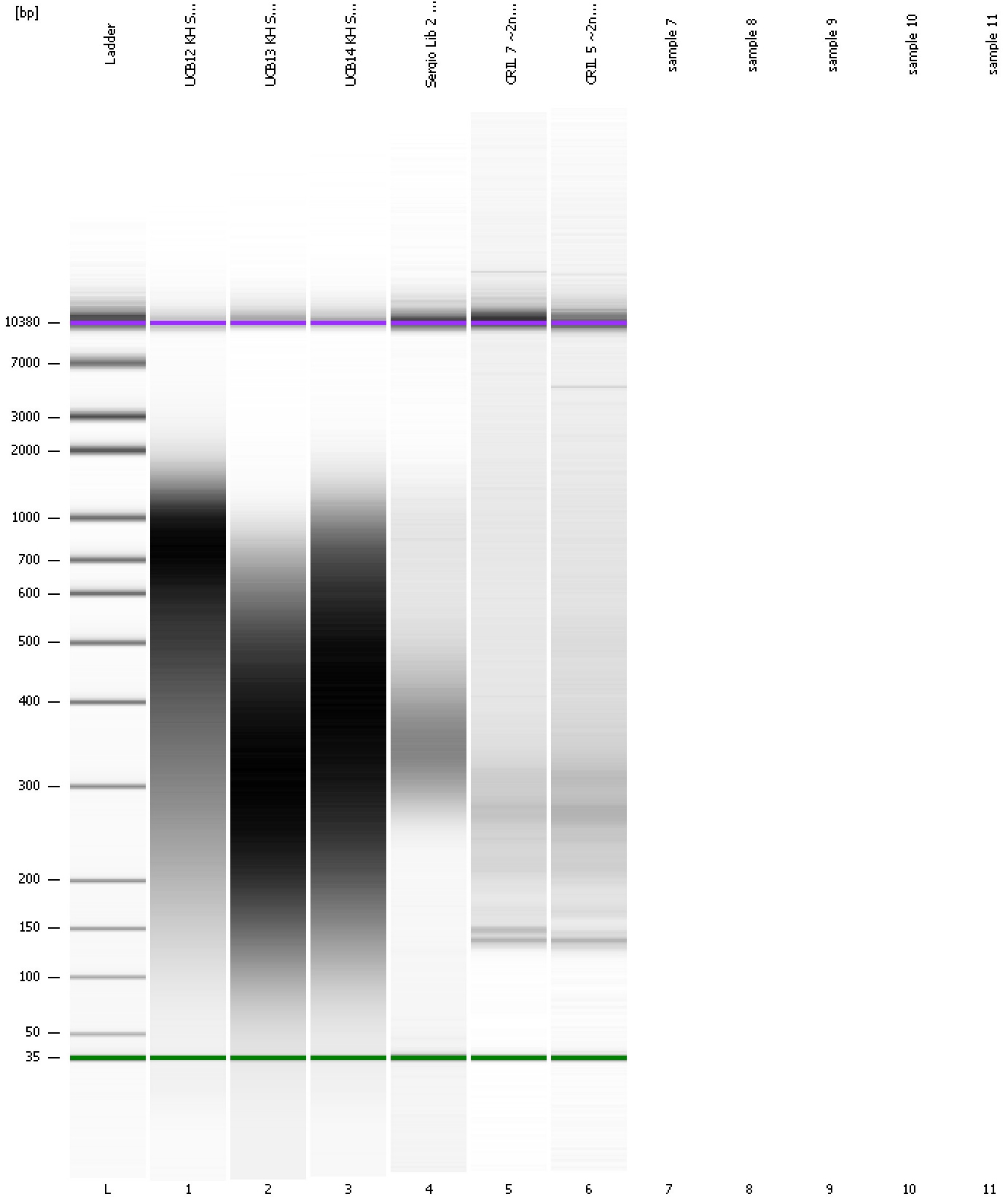
Region table for sample 6 : CRIL 5 ~2ng/ul 3/13/12

From [bp]	Molarity [pmol/l]	Average Size [bp]	Conc. [pg/μl]	To [bp]	Corr. Area	% of Total	Size distribution in CV [%]	Color
194	3,329.8	311	638.75	480	307.8	58	22.9	Blue

Assay Class: High Sensitivity DNA Assay
Data Path: C:\...ents and Settings\Bioanalyzer\2012-03-15\2012-03-15_003.xad

Created: 3/15/2012 11:08:00 AM
Modified: 3/15/2012 12:17:32 PM

Gel Image



Assay Class: High Sensitivity DNA Assay
Data Path: C:\...ents and Settings\Bioanalyzer\2012-03-15\2012-03-15_003.xad

Created: 3/15/2012 11:08:00 AM
Modified: 3/15/2012 12:17:32 PM

Invalid Samples

Sample 7 has not been run, no results available.

Sample 8 has not been run, no results available.

Sample 9 has not been run, no results available.

Sample 10 has not been run, no results available.

Sample 11 has not been run, no results available.

Assay Class: High Sensitivity DNA Assay
 Data Path: C:\...ents and Settings\Bioanalyzer\2012-03-15\2012-03-15_003.xad

Created: 3/15/2012 11:08:00 AM
 Modified: 3/15/2012 12:17:32 PM

Run Logbook

Description	Number	Source	Category	Sub Category	Time	Time Zone	User	Host
Run ended on port 1 (Number of wells acquired: 7)		Instrument	Run		3/15/2012 11:35:00 AM	(GMT --07:00) Pacific Standard Time	UC Davis	D8XSMGH1
Run started on port 1 (File: C:\Documents and Settings\Bioanalyzer\2012-03-15\2012-03-15_003.xad)		Instrument	Run		3/15/2012 11:08:06 AM	(GMT --07:00) Pacific Standard Time	UC Davis	D8XSMGH1
Product Number : G2938B		Instrument	Run		3/15/2012 11:08:06 AM	(GMT --07:00) Pacific Standard Time	UC Davis	D8XSMGH1
Name :		Instrument	Run		3/15/2012 11:08:06 AM	(GMT --07:00) Pacific Standard Time	UC Davis	D8XSMGH1
Vendor : Agilent Technologies		Instrument	Run		3/15/2012 11:08:06 AM	(GMT --07:00) Pacific Standard Time	UC Davis	D8XSMGH1
Serial# : DE13701086		Instrument	Run		3/15/2012 11:08:06 AM	(GMT --07:00) Pacific Standard Time	UC Davis	D8XSMGH1
Firmware : C.01.069		Instrument	Run		3/15/2012 11:08:06 AM	(GMT --07:00) Pacific Standard Time	UC Davis	D8XSMGH1
Cartridge : Electrode		Instrument	Run		3/15/2012 11:08:06 AM	(GMT --07:00) Pacific Standard Time	UC Davis	D8XSMGH1