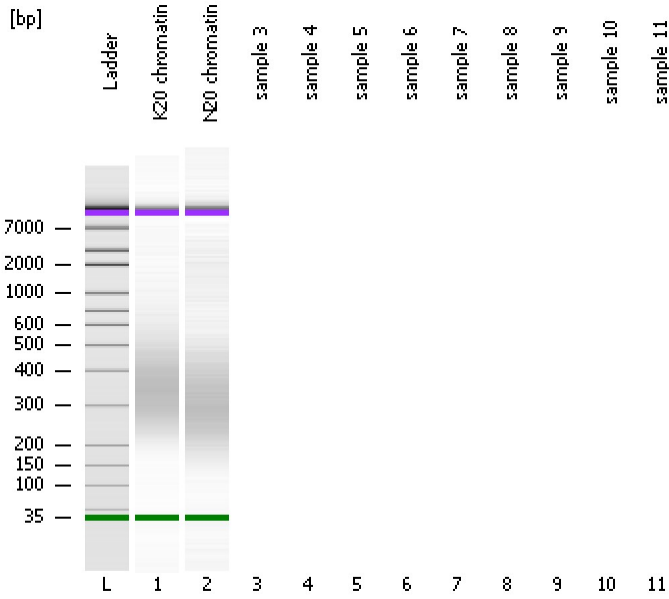


Assay Class: High Sensitivity DNA Assay  
Data Path: C:\...ents and Settings\Bioanalyzer\2012-03-15\2012-03-15\_004.xad

Created: 3/15/2012 1:52:45 PM  
Modified: 3/15/2012 2:18:01 PM

**Electrophoresis File Run Summary**



Instrument Information:

Instrument Name: DE13701086      Firmware: C.01.069  
Serial#: DE13701086      Type: G2938B

Assay Information:

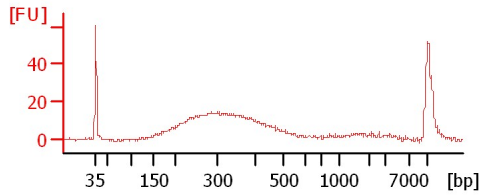
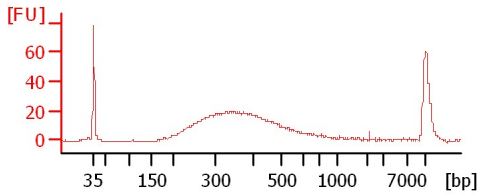
Assay Origin Path: C:\Program Files\Agilent\2100 bioanalyzer\2100 expert\assays\dsDNA\High Sensitivity DNA.xsy  
Assay Class: High Sensitivity DNA Assay  
Version: 1.03  
Assay Comments: Copyright © 2003-2010 Agilent Technologies

Chip Information:

Chip Lot #:  
Reagent Kit Lot #:  
Chip Comments:

**K20 chromatin**

**N20 chromatin**



Assay Class: High Sensitivity DNA Assay  
Data Path: C:\...ents and Settings\Bioanalyzer\2012-03-15\2012-03-15\_004.xad

Created: 3/15/2012 1:52:45 PM  
Modified: 3/15/2012 2:18:01 PM

**Electrophoresis File Run Summary (Chip Summary)**

| Sample Name   | Sample Comment | Rest. Digest             | Status | Observation | Result Label | Result Color |
|---------------|----------------|--------------------------|--------|-------------|--------------|--------------|
| K20 chromatin |                | <input type="checkbox"/> | ✓      |             |              |              |
| N20 chromatin |                | <input type="checkbox"/> | ✓      |             |              |              |
| sample 3      |                | <input type="checkbox"/> |        |             |              |              |
| sample 4      |                | <input type="checkbox"/> |        |             |              |              |
| sample 5      |                | <input type="checkbox"/> |        |             |              |              |
| sample 6      |                | <input type="checkbox"/> |        |             |              |              |
| sample 7      |                | <input type="checkbox"/> |        |             |              |              |
| sample 8      |                | <input type="checkbox"/> |        |             |              |              |
| sample 9      |                | <input type="checkbox"/> |        |             |              |              |
| sample 10     |                | <input type="checkbox"/> |        |             |              |              |
| sample 11     |                | <input type="checkbox"/> |        |             |              |              |
| Ladder        |                | <input type="checkbox"/> | ✓      |             |              |              |

**Chip Lot #**

**Reagent Kit Lot #**

**Chip Comments :**

Assay Class: High Sensitivity DNA Assay  
Data Path: C:\...ents and Settings\Bioanalyzer\2012-03-15\2012-03-15\_004.xad

Created: 3/15/2012 1:52:45 PM  
Modified: 3/15/2012 2:18:01 PM

**Electrophoresis Assay Details**

**General Analysis Settings**

Number of Available Sample and Ladder Wells (Max.) : 12  
Minimum Visible Range [s] : 32  
Maximum Visible Range [s] : 138  
Start Analysis Time Range [s] : 33  
End Analysis Time Range [s] : 137.5  
Ladder Concentration [pg/μl] : 1950  
Uses Standard Area for Ladder Fragments  
Lower Marker Concentration [pg/μl] : 125  
Upper Marker Concentration [pg/μl] : 75  
Used Upper Marker for Quantitation  
Standard Curve Fit is Point to Point  
Show Data Aligned to Lower and Upper Marker

**Integrator Settings**

Integration Start Time [s] : 33.05  
Integration End Time [s] : 137  
Slope Threshold : 0.8  
Height Threshold [FU] : 5  
Area Threshold : 0.1  
Width Threshold [s] : 0.6  
Baseline Plateau [s] : 0.5

**Filter Settings**

Filter Width [s] : 0.5  
Polynomial Order : 4

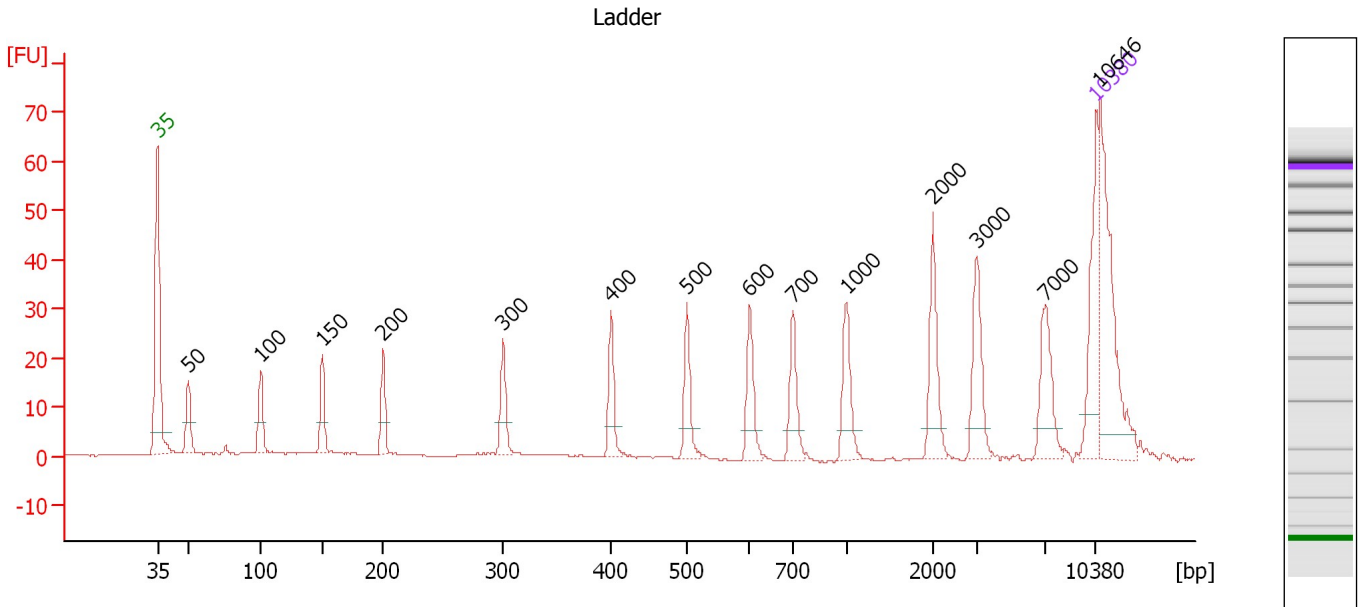
**Ladder**

| Ladder Peak | Size  | Area |
|-------------|-------|------|
| 1           | 35    | 160  |
| 2           | 50    | 210  |
| 3           | 100   | 208  |
| 4           | 150   | 221  |
| 5           | 200   | 242  |
| 6           | 300   | 270  |
| 7           | 400   | 305  |
| 8           | 500   | 306  |
| 9           | 600   | 336  |
| 10          | 700   | 321  |
| 11          | 1000  | 366  |
| 12          | 2000  | 413  |
| 13          | 3000  | 411  |
| 14          | 7000  | 400  |
| 15          | 10380 | 214  |

Assay Class: High Sensitivity DNA Assay  
 Data Path: C:\...ents and Settings\Bioanalyzer\2012-03-15\2012-03-15\_004.xad

Created: 3/15/2012 1:52:45 PM  
 Modified: 3/15/2012 2:18:01 PM

**Electropherogram Summary**



**Overall Results for Ladder**

Noise: 0.2

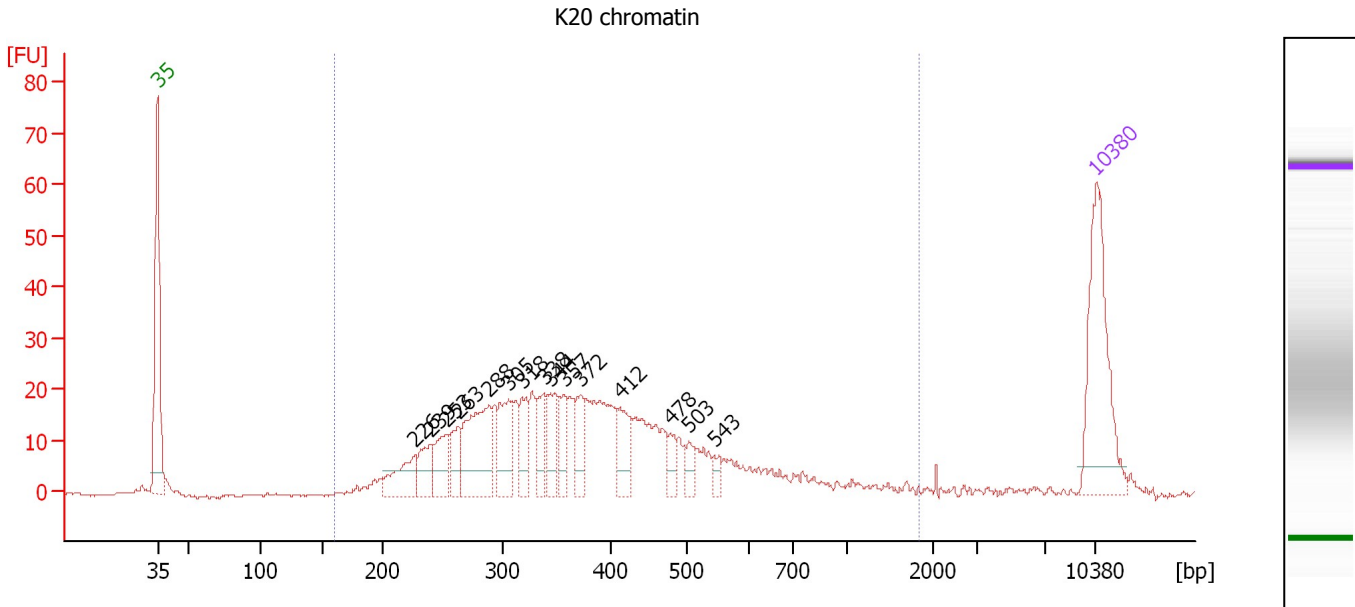
**Peak table for Ladder**

| Peak | Size [bp] | Conc. [pg/μl] | Molarity [pmol/l] | Observations |
|------|-----------|---------------|-------------------|--------------|
| 1    | 35        | 125.00        | 5,411.3           | Lower Marker |
| 2    | 50        | 150.00        | 4,545.5           | Ladder Peak  |
| 3    | 100       | 150.00        | 2,272.7           | Ladder Peak  |
| 4    | 150       | 150.00        | 1,515.2           | Ladder Peak  |
| 5    | 200       | 150.00        | 1,136.4           | Ladder Peak  |
| 6    | 300       | 150.00        | 757.6             | Ladder Peak  |
| 7    | 400       | 150.00        | 568.2             | Ladder Peak  |
| 8    | 500       | 150.00        | 454.5             | Ladder Peak  |
| 9    | 600       | 150.00        | 378.8             | Ladder Peak  |
| 10   | 700       | 150.00        | 324.7             | Ladder Peak  |
| 11   | 1,000     | 150.00        | 227.3             | Ladder Peak  |
| 12   | 2,000     | 150.00        | 113.6             | Ladder Peak  |
| 13   | 3,000     | 150.00        | 75.8              | Ladder Peak  |
| 14   | 7,000     | 150.00        | 32.5              | Ladder Peak  |
| 15   | 10,380    | 75.00         | 10.9              | Upper Marker |
| 16   | 10,646    | 0.00          | 0.0               |              |

Assay Class: High Sensitivity DNA Assay  
 Data Path: C:\...ents and Settings\Bioanalyzer\2012-03-15\2012-03-15\_004.xad

Created: 3/15/2012 1:52:45 PM  
 Modified: 3/15/2012 2:18:01 PM

**Electropherogram Summary Continued ...**



**Overall Results for sample 1 : K20 chromatin**

Number of peaks found: 15                      Corr. Area 1: 518.9  
 Noise: 0.3

**Peak table for sample 1 : K20 chromatin**

| Peak | Size [bp] | Conc. [pg/μl] | Molarity [pmol/l] | Observations |
|------|-----------|---------------|-------------------|--------------|
| 1    | 35        | 125.00        | 5,411.3           | Lower Marker |
| 2    | 226       | 34.40         | 230.2             |              |
| 3    | 239       | 25.91         | 164.3             |              |
| 4    | 253       | 28.99         | 173.7             |              |
| 5    | 263       | 23.51         | 135.2             |              |
| 6    | 288       | 76.75         | 403.8             |              |
| 7    | 305       | 41.21         | 204.7             |              |
| 8    | 318       | 24.85         | 118.5             |              |
| 9    | 338       | 24.40         | 109.5             |              |
| 10   | 344       | 26.07         | 114.7             |              |
| 11   | 357       | 20.27         | 86.0              |              |
| 12   | 372       | 25.25         | 103.0             |              |
| 13   | 412       | 28.19         | 103.8             |              |
| 14   | 478       | 11.98         | 38.0              |              |
| 15   | 503       | 11.86         | 35.7              |              |
| 16   | 543       | 6.59          | 18.4              |              |
| 17   | 10,380    | 75.00         | 10.9              | Upper Marker |

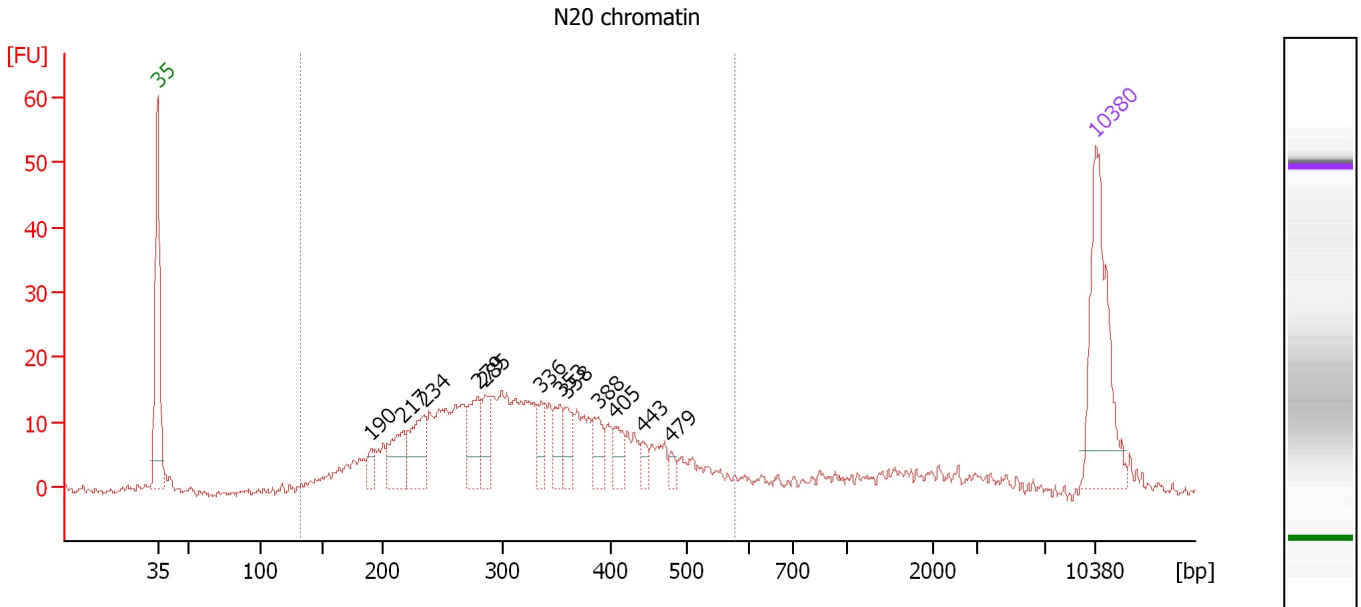
**Region table for sample 1 : K20 chromatin**

| From [bp] | Molarity [pmol/l] | Average Size [bp] | Conc. [pg/μl] | To [bp] | Corr. Area | % of Total | Size distribution in CV [%] | Color |
|-----------|-------------------|-------------------|---------------|---------|------------|------------|-----------------------------|-------|
| 160       | 2,971.8           | 392               | 664.56        | 1,835   | 518.9      | 98         | 41.0                        | Blue  |

Assay Class: High Sensitivity DNA Assay  
 Data Path: C:\...ents and Settings\Bioanalyzer\2012-03-15\2012-03-15\_004.xad

Created: 3/15/2012 1:52:45 PM  
 Modified: 3/15/2012 2:18:01 PM

**Electropherogram Summary Continued ...**



**Overall Results for sample 2 : N20 chromatin**

Number of peaks found: 12                      Corr. Area 1: 381.3  
 Noise: 0.7

**Peak table for sample 2 : N20 chromatin**

| Peak | Size [bp] | Conc. [pg/μl] | Molarity [pmol/l] | Observations |
|------|-----------|---------------|-------------------|--------------|
| 1    | 35        | 125.00        | 5,411.3           | Lower Marker |
| 2    | 190       | 10.81         | 86.3              |              |
| 3    | 217       | 35.02         | 245.0             |              |
| 4    | 234       | 42.97         | 278.3             |              |
| 5    | 279       | 36.79         | 200.0             |              |
| 6    | 285       | 26.58         | 141.1             |              |
| 7    | 336       | 17.77         | 80.2              |              |
| 8    | 353       | 21.23         | 91.2              |              |
| 9    | 358       | 17.96         | 75.9              |              |
| 10   | 388       | 18.51         | 72.2              |              |
| 11   | 405       | 14.53         | 54.3              |              |
| 12   | 443       | 8.31          | 28.4              |              |
| 13   | 479       | 5.87          | 18.6              |              |
| 14   | 10,380    | 75.00         | 10.9              | Upper Marker |

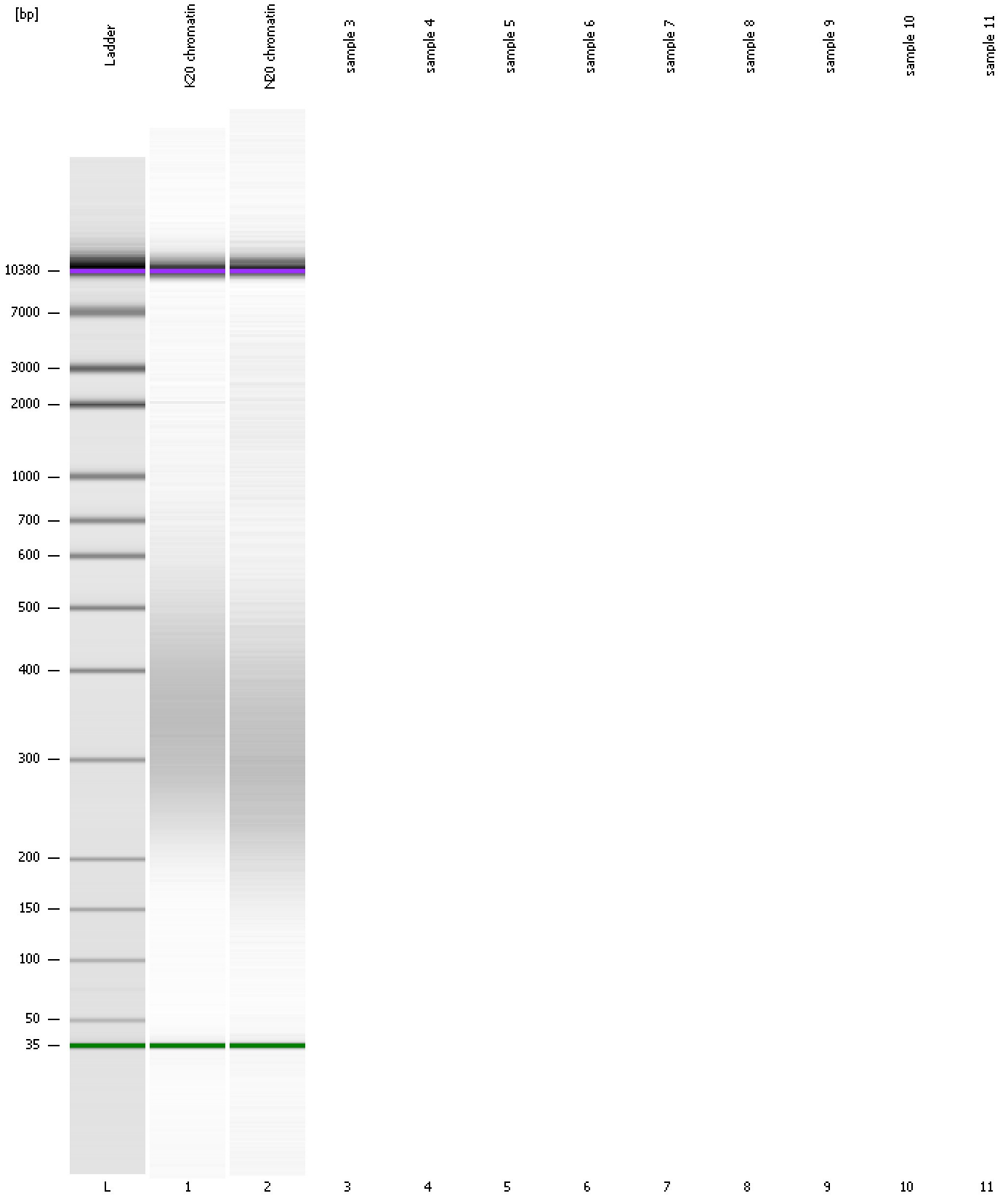
**Region table for sample 2 : N20 chromatin**

| From [bp] | Molarity [pmol/l] | Average Size [bp] | Conc. [pg/μl] | To [bp] | Corr. Area | % of Total | Size distribution in CV [%] | Color |
|-----------|-------------------|-------------------|---------------|---------|------------|------------|-----------------------------|-------|
| 132       | 3,362.3           | 320               | 634.82        | 575     | 381.3      | 91         | 27.2                        | Blue  |

Assay Class: High Sensitivity DNA Assay  
Data Path: C:\...ents and Settings\Bioanalyzer\2012-03-15\2012-03-15\_004.xad

Created: 3/15/2012 1:52:45 PM  
Modified: 3/15/2012 2:18:01 PM

**Gel Image**



Assay Class: High Sensitivity DNA Assay  
Data Path: C:\...ents and Settings\Bioanalyzer\2012-03-15\2012-03-15\_004.xad

Created: 3/15/2012 1:52:45 PM  
Modified: 3/15/2012 2:18:01 PM

**Invalid Samples**

Sample 3 has not been run, no results available.

Sample 4 has not been run, no results available.

Sample 5 has not been run, no results available.

Sample 6 has not been run, no results available.

Sample 7 has not been run, no results available.

Sample 8 has not been run, no results available.

Sample 9 has not been run, no results available.

Sample 10 has not been run, no results available.

Sample 11 has not been run, no results available.



Assay Class: High Sensitivity DNA Assay  
 Data Path: C:\...ents and Settings\Bioanalyzer\2012-03-15\2012-03-15\_004.xad

Created: 3/15/2012 1:52:45 PM  
 Modified: 3/15/2012 2:18:01 PM

**Run Logbook**

| Description   | Number | Source     | Category | Sub Category | Time                 | Time Zone                           | User     | Host     |
|---|--------|------------|----------|--------------|----------------------|-------------------------------------|----------|----------|
| Run ended on port 1 (Number of wells acquired: 3)   |        | Instrument | Run      |              | 3/15/2012 2:08:21 PM | (GMT --07:00) Pacific Standard Time | UC Davis | D8XSMGH1 |
| Run started on port 1 (File: C:\Documents and Settings\Bioanalyzer\2012-03-15\2012-03-15_004.xad) |        | Instrument | Run      |              | 3/15/2012 1:52:51 PM | (GMT --07:00) Pacific Standard Time | UC Davis | D8XSMGH1 |
| Product Number : G2938B   |        | Instrument | Run      |              | 3/15/2012 1:52:51 PM | (GMT --07:00) Pacific Standard Time | UC Davis | D8XSMGH1 |
| Name :  |        | Instrument | Run      |              | 3/15/2012 1:52:51 PM | (GMT --07:00) Pacific Standard Time | UC Davis | D8XSMGH1 |
| Vendor : Agilent Technologies   |        | Instrument | Run      |              | 3/15/2012 1:52:51 PM | (GMT --07:00) Pacific Standard Time | UC Davis | D8XSMGH1 |
| Serial# : DE13701086  |        | Instrument | Run      |              | 3/15/2012 1:52:51 PM | (GMT --07:00) Pacific Standard Time | UC Davis | D8XSMGH1 |
| Firmware : C.01.069   |        | Instrument | Run      |              | 3/15/2012 1:52:51 PM | (GMT --07:00) Pacific Standard Time | UC Davis | D8XSMGH1 |
| Cartridge : Electrode   |        | Instrument | Run      |              | 3/15/2012 1:52:51 PM | (GMT --07:00) Pacific Standard Time | UC Davis | D8XSMGH1 |