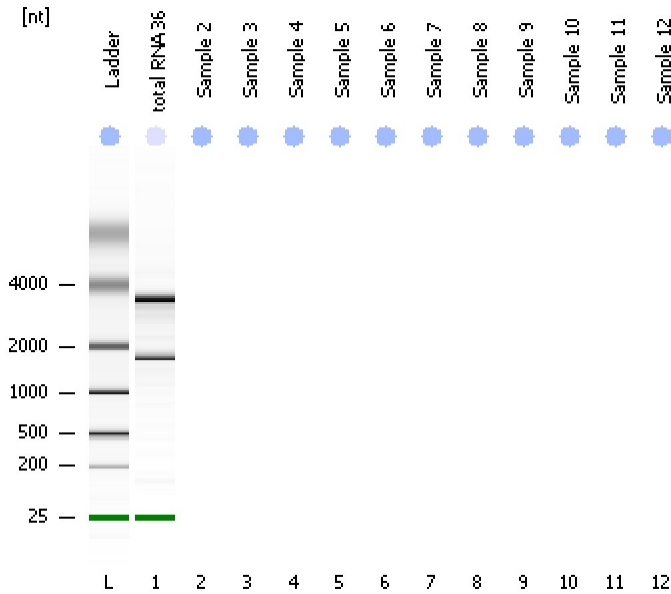


Assay Class: Eukaryote Total RNA Nano  
Data Path: C:\...ents and Settings\Bioanalyzer\2012-03-15\2012-03-15\_005.xad

Created: 3/15/2012 2:30:27 PM  
Modified: 3/15/2012 2:46:55 PM

**Electrophoresis File Run Summary**



Instrument Information:

Instrument Name: DE13701086      Firmware: C.01.069  
Serial#: DE13701086      Type: G2938B

Assay Information:

Assay Origin Path: C:\Program Files\Agilent\2100 bioanalyzer\2100 expert\assays\RNA\Eukaryote Total RNA Nano Series II.xsy

Assay Class: Eukaryote Total RNA Nano

Version: 2.6

Assay Comments: Total RNA Analysis ng sensitivity (Eukaryote)

© Copyright 2003 - 2009 Agilent Technologies, Inc.

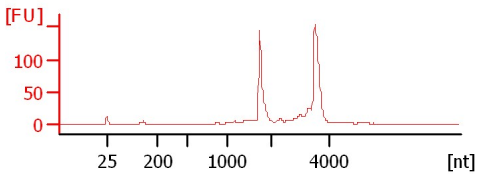
Chip Information:

Chip Lot #:

Reagent Kit Lot #:

Chip Comments:

**total RNA 36**  
RIN: 9.30



Assay Class: Eukaryote Total RNA Nano  
 Data Path: C:\...ents and Settings\Bioanalyzer\2012-03-15\2012-03-15\_005.xad

Created: 3/15/2012 2:30:27 PM  
 Modified: 3/15/2012 2:46:55 PM

**Electrophoresis File Run Summary (Chip Summary)**

Sample Name	Sample Comment	Status	Result Label	Result Color
total RNA 36		✓	RIN: 9.30	
Sample 2			All Other Samples	
Sample 3			All Other Samples	
Sample 4			All Other Samples	
Sample 5			All Other Samples	
Sample 6			All Other Samples	
Sample 7			All Other Samples	
Sample 8			All Other Samples	
Sample 9			All Other Samples	
Sample 10			All Other Samples	
Sample 11			All Other Samples	
Sample 12			All Other Samples	
Ladder		✓	All Other Samples	

**Chip Lot #**

**Reagent Kit Lot #**

**Chip Comments :**

Assay Class: Eukaryote Total RNA Nano  
Data Path: C:\...ents and Settings\Bioanalyzer\2012-03-15\2012-03-15\_005.xad

Created: 3/15/2012 2:30:27 PM  
Modified: 3/15/2012 2:46:55 PM

## Electrophoresis Assay Details

### General Analysis Settings

Number of Available Sample and Ladder Wells (Max.) : 13  
Minimum Visible Range [s] : 17  
Maximum Visible Range [s] : 70  
Start Analysis Time Range [s] : 19  
End Analysis Time Range [s] : 69  
Ladder Concentration [ng/μl] : 150  
Lower Marker Concentration [ng/μl] : 0  
Upper Marker Concentration [ng/μl] : 0  
Used Lower Marker for Quantitation  
Standard Curve Fit is Logarithmic  
Show Data Aligned to Lower Marker

### Integrator Settings

Integration Start Time [s] : 19  
Integration End Time [s] : 69  
Slope Threshold : 0.6  
Height Threshold [FU] : 0.5  
Area Threshold : 0.2  
Width Threshold [s] : 0.5  
Baseline Plateau [s] : 6

### Filter Settings

Filter Width [s] : 0.5  
Polynomial Order : 4

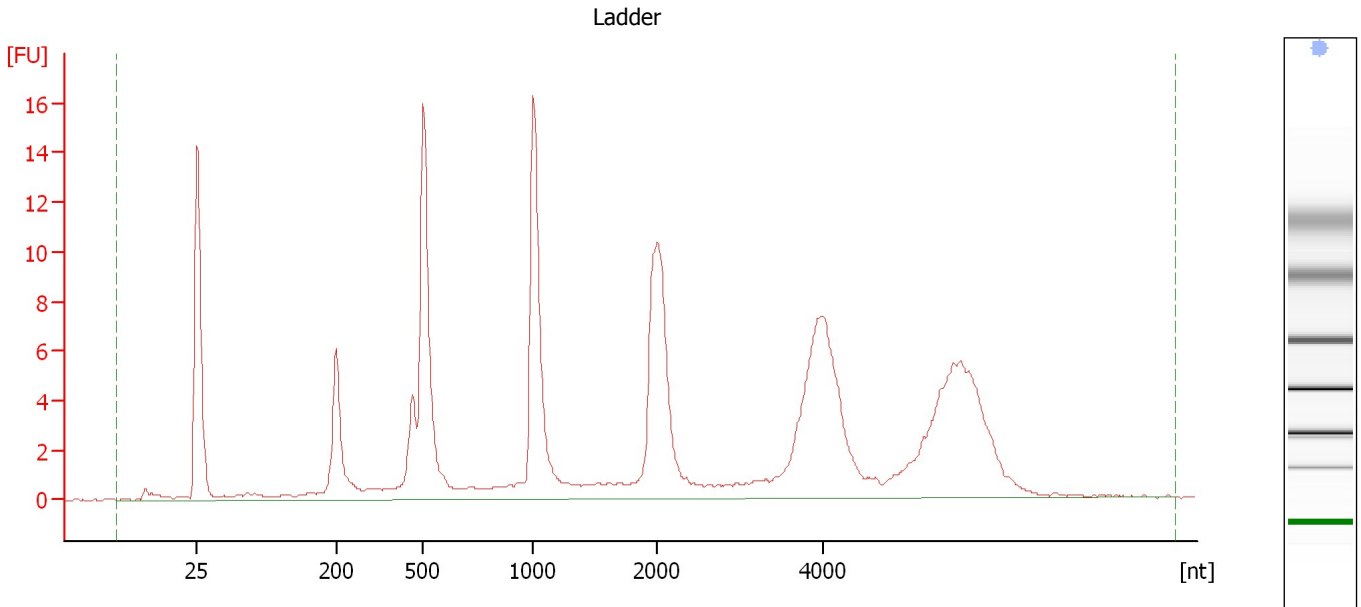
### Ladder

Ladder Peak	Size
1	25
2	200
3	500
4	1000
5	2000
6	4000

Assay Class: Eukaryote Total RNA Nano  
Data Path: C:\...ents and Settings\Bioanalyzer\2012-03-15\2012-03-15\_005.xad

Created: 3/15/2012 2:30:27 PM  
Modified: 3/15/2012 2:46:55 PM

**Electropherogram Summary**



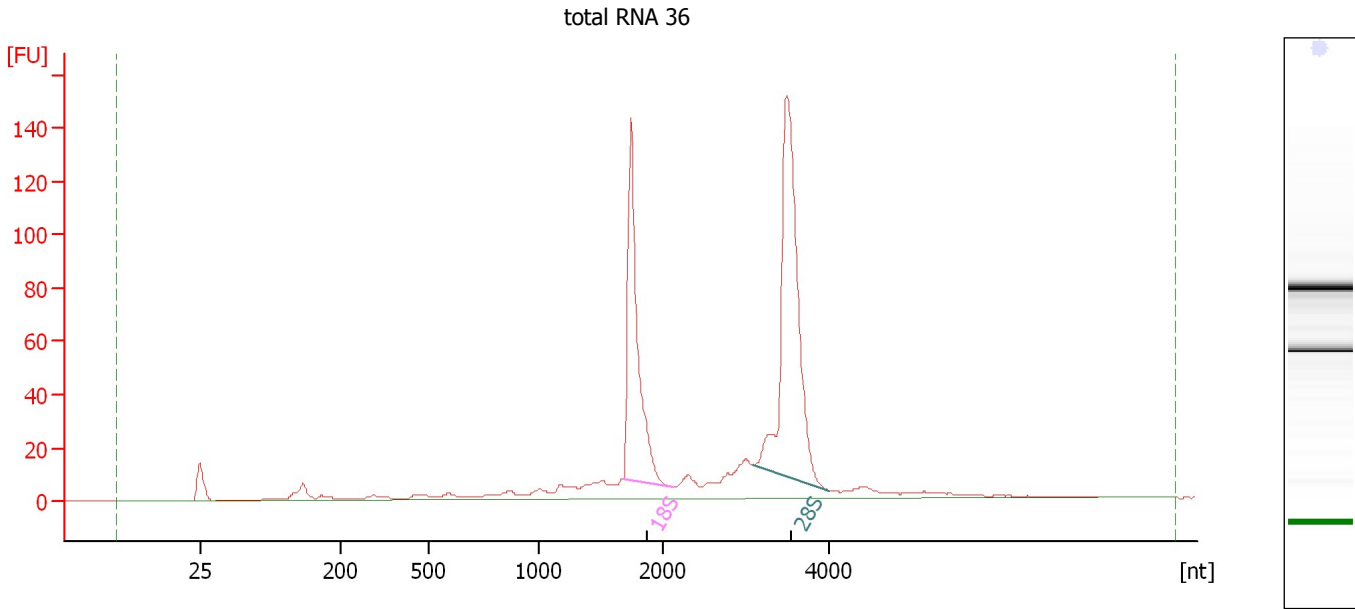
**Overall Results for Ladder**

RNA Area:	164.8	Result Flagging Color:	<span style="background-color: blue; border: 1px solid black; display: inline-block; width: 20px; height: 10px;"></span>
RNA Concentration:	150 ng/μl	Result Flagging Label:	All Other Samples

Assay Class: Eukaryote Total RNA Nano  
Data Path: C:\...ents and Settings\Bioanalyzer\2012-03-15\2012-03-15\_005.xad

Created: 3/15/2012 2:30:27 PM  
Modified: 3/15/2012 2:46:55 PM

**Electropherogram Summary Continued ...**



**Overall Results for sample 1 : total RNA 36**

RNA Area:	690.7	RNA Integrity Number (RIN):	9.3 (B.02.08)
RNA Concentration:	629 ng/μl	Result Flagging Color:	<span style="background-color: #ccccff; border: 1px solid black; display: inline-block; width: 20px; height: 10px;"></span>
rRNA Ratio [28s / 18s]:	1.6	Result Flagging Label:	RIN: 9.30

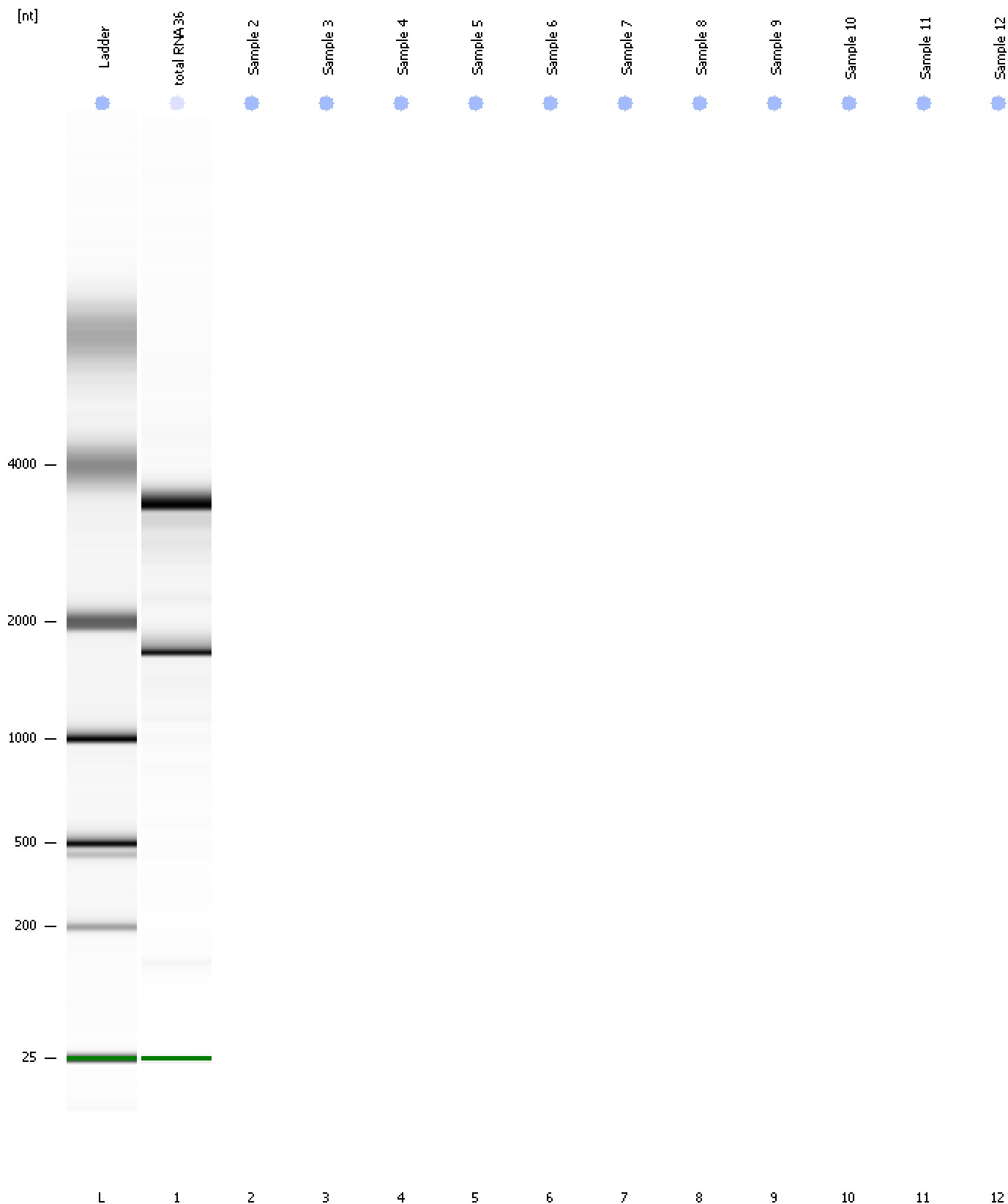
**Fragment table for sample 1 : total RNA 36**

Name	Start Size [nt]	End Size [nt]	Area	% of total Area
18S	1,676	2,106	157.5	22.8
28S	3,073	3,990	249.7	36.1

Assay Class: Eukaryote Total RNA Nano  
Data Path: C:\...ents and Settings\Bioanalyzer\2012-03-15\2012-03-15\_005.xad

Created: 3/15/2012 2:30:27 PM  
Modified: 3/15/2012 2:46:55 PM

**Gel Image**



Assay Class: Eukaryote Total RNA Nano  
Data Path: C:\...ents and Settings\Bioanalyzer\2012-03-15\2012-03-15\_005.xad

Created: 3/15/2012 2:30:27 PM  
Modified: 3/15/2012 2:46:55 PM

**Invalid Samples**

Sample 2 has not been run, no results available.

Sample 3 has not been run, no results available.

Sample 4 has not been run, no results available.

Sample 5 has not been run, no results available.

Sample 6 has not been run, no results available.

Sample 7 has not been run, no results available.

Sample 8 has not been run, no results available.

Sample 9 has not been run, no results available.

Sample 10 has not been run, no results available.

Sample 11 has not been run, no results available.

Sample 12 has not been run, no results available.

Assay Class: Eukaryote Total RNA Nano  
 Data Path: C:\...ents and Settings\Bioanalyzer\2012-03-15\2012-03-15\_005.xad

Created: 3/15/2012 2:30:27 PM  
 Modified: 3/15/2012 2:46:55 PM

**Run Logbook**

Description	Number	Source	Category	Sub Category	Time	Time Zone	User	Host
Run ended on port 1 (Number of wells acquired: 2)		Instrument	Run		3/15/2012 2:39:12 PM	(GMT --07:00) Pacific Standard Time	UC Davis	D8XSMGH1
Run started on port 1 (File: C:\Documents and Settings\Bioanalyzer\2012-03-15\2012-03-15_005.xad)		Instrument	Run		3/15/2012 2:30:33 PM	(GMT --07:00) Pacific Standard Time	UC Davis	D8XSMGH1
Product Number : G2938B		Instrument	Run		3/15/2012 2:30:33 PM	(GMT --07:00) Pacific Standard Time	UC Davis	D8XSMGH1
Name :		Instrument	Run		3/15/2012 2:30:33 PM	(GMT --07:00) Pacific Standard Time	UC Davis	D8XSMGH1
Vendor : Agilent Technologies		Instrument	Run		3/15/2012 2:30:33 PM	(GMT --07:00) Pacific Standard Time	UC Davis	D8XSMGH1
Serial# : DE13701086		Instrument	Run		3/15/2012 2:30:33 PM	(GMT --07:00) Pacific Standard Time	UC Davis	D8XSMGH1
Firmware : C.01.069		Instrument	Run		3/15/2012 2:30:33 PM	(GMT --07:00) Pacific Standard Time	UC Davis	D8XSMGH1
Cartridge : Electrode		Instrument	Run		3/15/2012 2:30:33 PM	(GMT --07:00) Pacific Standard Time	UC Davis	D8XSMGH1