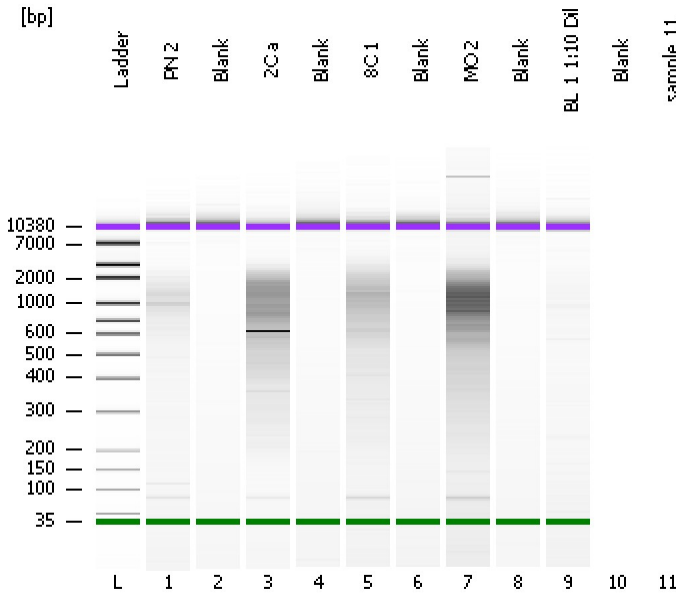


Assay Class: High Sensitivity DNA Assay  
Data Path: C:\...ents and Settings\Bioanalyzer\2012-03-16\2012-03-16\_006.xad

Created: 3/16/2012 4:11:00 PM  
Modified: 3/16/2012 4:45:55 PM

**Electrophoresis File Run Summary**



Instrument Information:

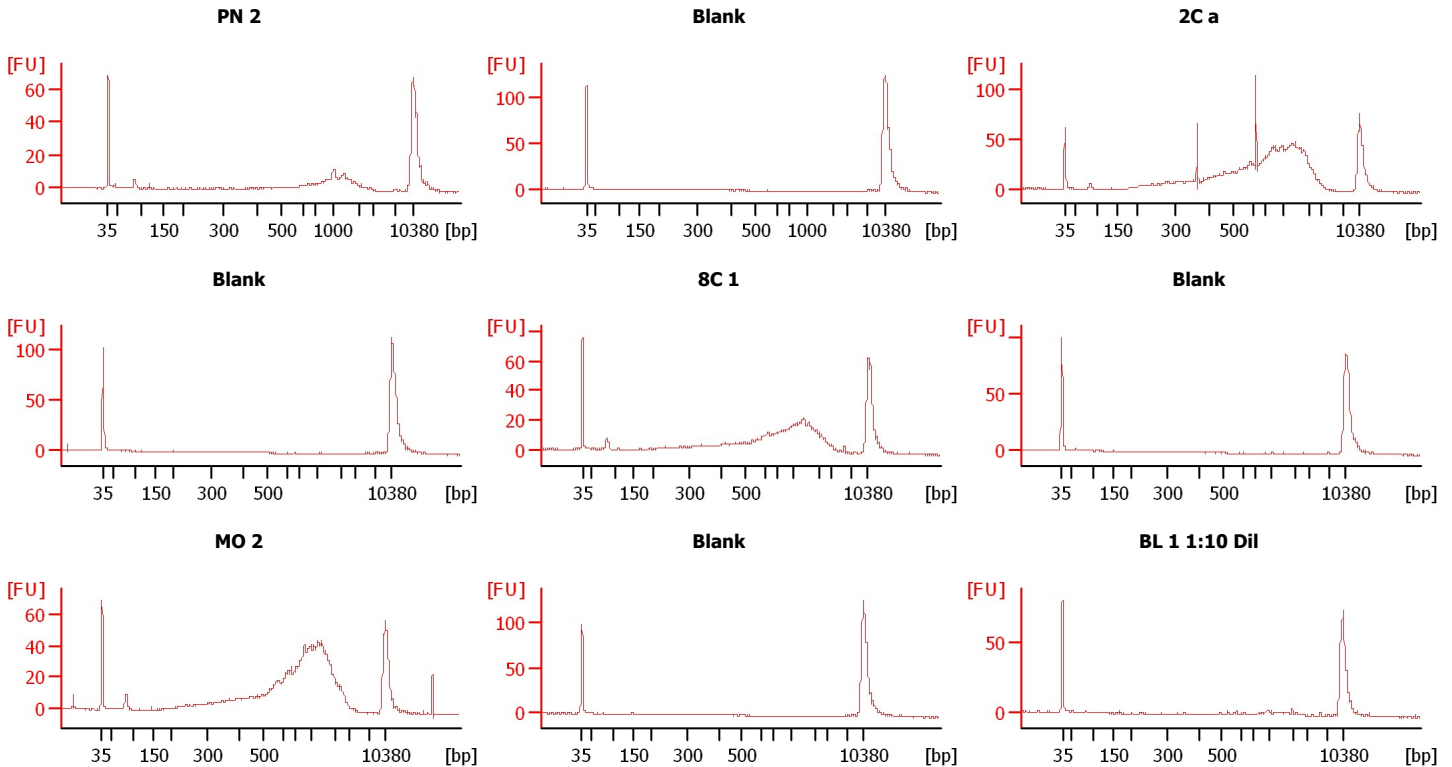
Instrument Name: DE13701086      Firmware: C.01.069  
Serial#: DE13701086      Type: G2938B

Assay Information:

Assay Origin Path: C:\Program Files\Agilent\2100 bioanalyzer\2100 expert\assays\dsDNA\High Sensitivity DNA.xsy  
Assay Class: High Sensitivity DNA Assay  
Version: 1.03  
Assay Comments: Copyright © 2003-2010 Agilent Technologies

Chip Information:

Chip Lot #:      Reagent Kit Lot #:      Chip Comments:



Assay Class: High Sensitivity DNA Assay  
Data Path: C:\...ents and Settings\Bioanalyzer\2012-03-16\2012-03-16\_006.xad

Created: 3/16/2012 4:11:00 PM  
Modified: 3/16/2012 4:45:55 PM

**Electrophoresis File Run Summary (Chip Summary)**

Sample Name	Sample Comment	Rest. Digest	Status	Observation	Result Label	Result Color
PN 2		<input type="checkbox"/>	✓			
Blank		<input type="checkbox"/>	✓			
2C a		<input type="checkbox"/>	✓			
Blank		<input type="checkbox"/>	✓			
8C 1		<input type="checkbox"/>	✓			
Blank		<input type="checkbox"/>	✓			
MO 2		<input type="checkbox"/>	✓			
Blank		<input type="checkbox"/>	✓			
BL 1 1:10 Dil		<input type="checkbox"/>	✓			
Blank		<input type="checkbox"/>	✗			
sample 11		<input type="checkbox"/>				
Ladder		<input type="checkbox"/>	✓			

**Chip Lot #**

**Reagent Kit Lot #**

**Chip Comments :**

Assay Class: High Sensitivity DNA Assay  
Data Path: C:\...ents and Settings\Bioanalyzer\2012-03-16\2012-03-16\_006.xad

Created: 3/16/2012 4:11:00 PM  
Modified: 3/16/2012 4:45:55 PM

**Electrophoresis Assay Details**

**General Analysis Settings**

Number of Available Sample and Ladder Wells (Max.) : 12  
Minimum Visible Range [s] : 32  
Maximum Visible Range [s] : 138  
Start Analysis Time Range [s] : 33  
End Analysis Time Range [s] : 137.5  
Ladder Concentration [pg/μl] : 1950  
Uses Standard Area for Ladder Fragments  
Lower Marker Concentration [pg/μl] : 125  
Upper Marker Concentration [pg/μl] : 75  
Used Upper Marker for Quantitation  
Standard Curve Fit is Point to Point  
Show Data Aligned to Lower and Upper Marker

**Integrator Settings**

Integration Start Time [s] : 33.05  
Integration End Time [s] : 137  
Slope Threshold : 0.8  
Height Threshold [FU] : 5  
Area Threshold : 0.1  
Width Threshold [s] : 0.6  
Baseline Plateau [s] : 0.5

**Filter Settings**

Filter Width [s] : 0.5  
Polynomial Order : 4

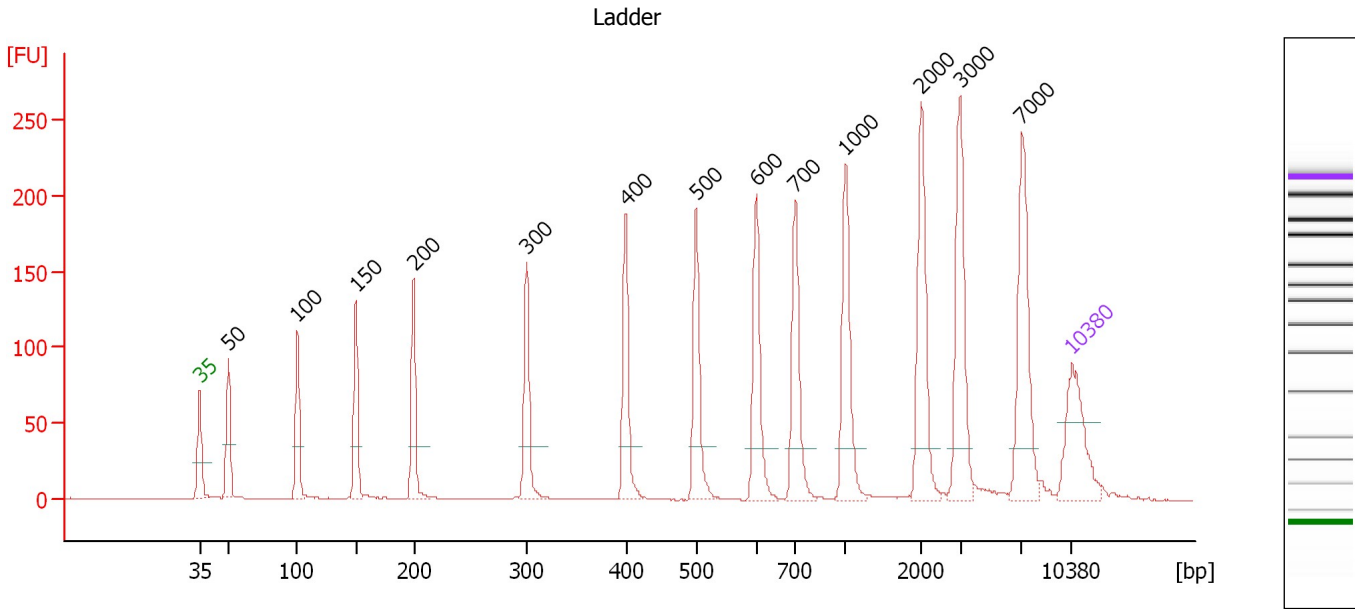
**Ladder**

Ladder Peak	Size	Area
1	35	160
2	50	210
3	100	208
4	150	221
5	200	242
6	300	270
7	400	305
8	500	306
9	600	336
10	700	321
11	1000	366
12	2000	413
13	3000	411
14	7000	400
15	10380	214

Assay Class: High Sensitivity DNA Assay  
 Data Path: C:\...ents and Settings\Bioanalyzer\2012-03-16\2012-03-16\_006.xad

Created: 3/16/2012 4:11:00 PM  
 Modified: 3/16/2012 4:45:55 PM

**Electropherogram Summary**



**Overall Results for Ladder**

Noise: 0.2

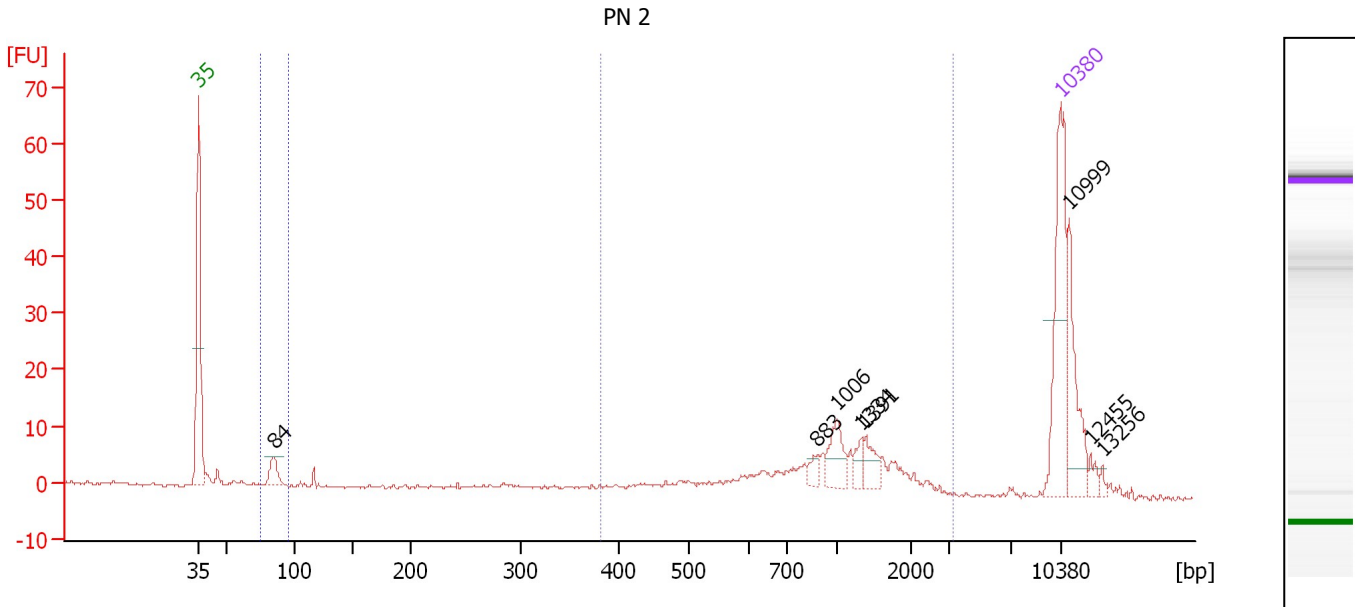
**Peak table for Ladder**

Peak	Size [bp]	Conc. [pg/μl]	Molarity [pmol/l]	Observations
1	35	125.00	5,411.3	Lower Marker
2	50	150.00	4,545.5	Ladder Peak
3	100	150.00	2,272.7	Ladder Peak
4	150	150.00	1,515.2	Ladder Peak
5	200	150.00	1,136.4	Ladder Peak
6	300	150.00	757.6	Ladder Peak
7	400	150.00	568.2	Ladder Peak
8	500	150.00	454.5	Ladder Peak
9	600	150.00	378.8	Ladder Peak
10	700	150.00	324.7	Ladder Peak
11	1,000	150.00	227.3	Ladder Peak
12	2,000	150.00	113.6	Ladder Peak
13	3,000	150.00	75.8	Ladder Peak
14	7,000	150.00	32.5	Ladder Peak
15	10,380	75.00	10.9	Upper Marker

Assay Class: High Sensitivity DNA Assay  
 Data Path: C:\...ents and Settings\Bioanalyzer\2012-03-16\2012-03-16\_006.xad

Created: 3/16/2012 4:11:00 PM  
 Modified: 3/16/2012 4:45:55 PM

**Electropherogram Summary Continued ...**



**Overall Results for sample 1 : PN 2**

Number of peaks found: 8                      Corr. Area 1: 116.1  
 Noise: 0.2                                      Corr. Area 2: 9.4

**Peak table for sample 1 : PN 2**

Peak	Size [bp]	Conc. [pg/μl]	Molarity [pmol/l]	Observations
1	35	125.00	5,411.3	Lower Marker
2	84	18.39	330.1	
3	883	7.69	13.2	
4	1,006	22.32	33.6	
5	1,334	8.83	10.0	
6	1,391	13.33	14.5	
7	10,380	75.00	10.9	Upper Marker
8	10,999	0.00	0.0	
9	12,455	0.00	0.0	
10	13,256	0.00	0.0	

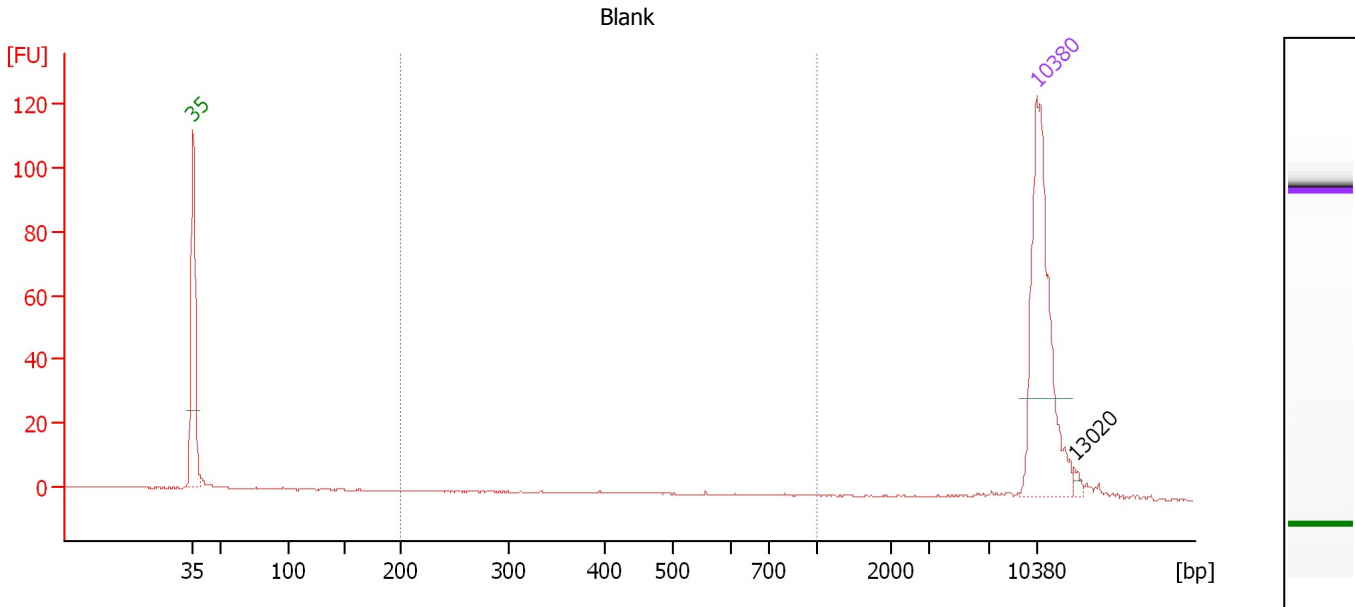
**Region table for sample 1 : PN 2**

From [bp]	Molarity [pmol/l]	Average Size [bp]	Conc. [pg/μl]	To [bp]	Corr. Area	% of Total	Size distribution in CV [%]	Color
74	396.5	84	22.03	94	9.4	5	4.0	Blue
381	292.5	1,095	161.35	3,167	116.1	58	46.9	Dark Blue

Assay Class: High Sensitivity DNA Assay  
 Data Path: C:\...ents and Settings\Bioanalyzer\2012-03-16\2012-03-16\_006.xad

Created: 3/16/2012 4:11:00 PM  
 Modified: 3/16/2012 4:45:55 PM

**Electropherogram Summary Continued ...**



**Overall Results for sample 2 : Blank**

Number of peaks found: 1                      Corr. Area 1: 6.5  
 Noise: 0.2

**Peak table for sample 2 : Blank**

Peak	Size [bp]	Conc. [pg/μl]	Molarity [pmol/l]	Observations
1	35	125.00	5,411.3	Lower Marker
2	10,380	75.00	10.9	Upper Marker
3	13,020	0.00	0.0	

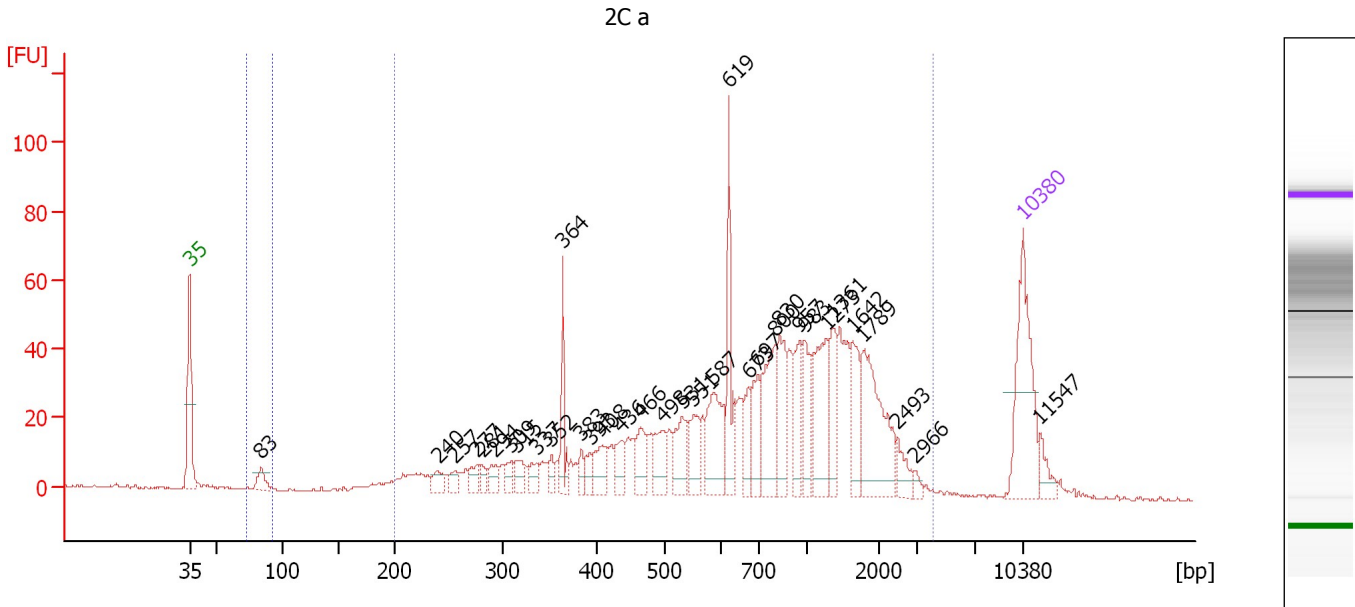
**Region table for sample 2 : Blank**

From [bp]	Molarity [pmol/l]	Average Size [bp]	Conc. [pg/μl]	To [bp]	Corr. Area	% of Total	Size distribution in CV [%]	Color
200	12.2	517	3.44	1,000	6.5	15	36.5	Blue

Assay Class: High Sensitivity DNA Assay  
 Data Path: C:\...ents and Settings\Bioanalyzer\2012-03-16\2012-03-16\_006.xad

Created: 3/16/2012 4:11:00 PM  
 Modified: 3/16/2012 4:45:55 PM

**Electropherogram Summary Continued ...**



**Overall Results for sample 3 : 2C a**

Number of peaks found: 34                      Corr. Area 1: 1,098.7  
 Noise: 0.2    Corr. Area 2: 10.0

**Peak table for sample 3 : 2C a**

Peak	Size [bp]	Conc. [pg/μl]	Molarity [pmol/l]	Observations
1	35	125.00	5,411.3	Lower Marker
2	83	16.59	301.3	
3	240	13.48	85.0	
4	257	9.91	58.5	
5	277	12.99	71.1	
6	281	8.93	48.1	
7	294	12.69	65.4	
8	309	9.69	47.5	
9	315	15.78	75.8	
10	337	12.71	57.2	
11	352	9.56	41.1	
12	364	32.00	133.3	
13	383	10.13	40.0	
14	393	11.06	42.6	
15	408	25.16	93.5	
16	436	18.91	65.7	
17	466	25.47	82.9	
18	498	26.31	80.0	
19	531	30.61	87.3	
20	551	28.70	78.9	
21	587	53.44	138.0	
22	619	52.51	128.4	
23	673	24.15	54.4	
24	697	30.92	67.2	
25	800	60.58	114.8	
26	830	44.59	81.4	

Assay Class: High Sensitivity DNA Assay  
 Data Path: C:\...ents and Settings\Bioanalyzer\2012-03-16\2012-03-16\_006.xad



Created: 3/16/2012 4:11:00 PM  
 Modified: 3/16/2012 4:45:55 PM

**Electropherogram Summary Continued ...**

**... Peak table for sample 3 : 2C a**

Peak	Size [bp]	Conc. [pg/µl]	Molarity [pmol/l]	Observations
27	957	28.66	45.4	
28	983	30.01	46.2	
29	1,273	56.91	67.7	
30	1,361	30.54	34.0	
31	1,642	33.27	30.7	
32	1,789	78.99	66.9	
33	2,493	13.78	8.4	
34	2,966	4.05	2.1	
35	10,380	75.00	10.9	Upper Marker
36	11,547	0.00	0.0	

**Region table for sample 3 : 2C a**

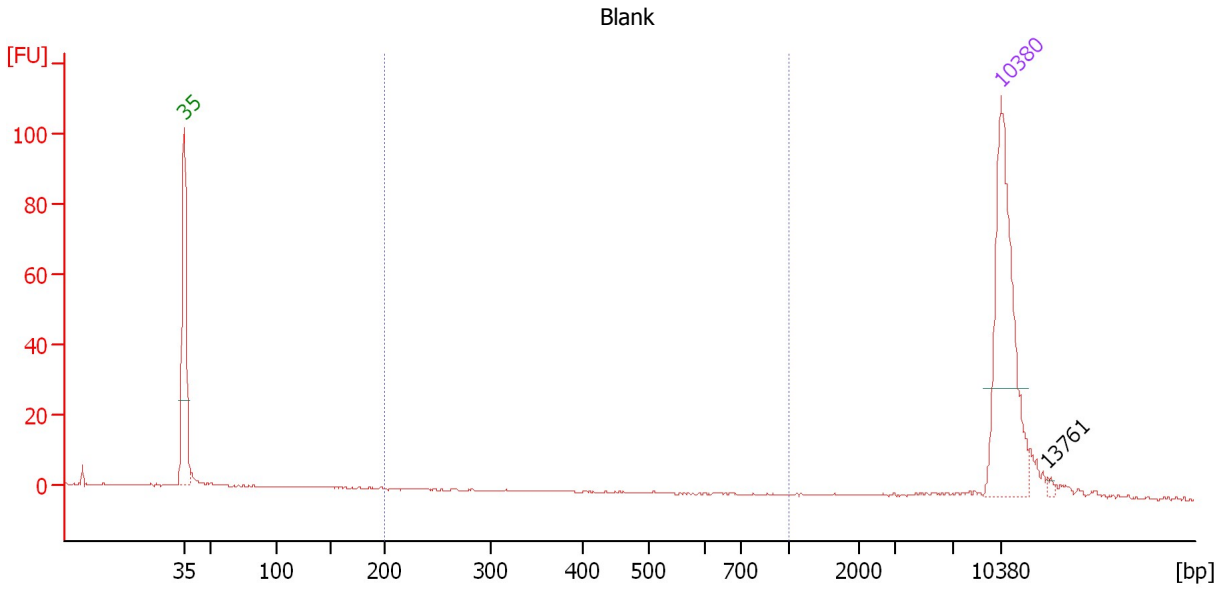
From [bp]	Molarity [pmol/l]	Average Size [bp]	Conc. [pg/µl]	To [bp]	Corr. Area	% of Total	Size distribution in CV [%]	Color
73	295.1	83	16.26	92	10.0	1	3.7	
200	2,967.9	950	1,120.30	4,177	1,098.7	95	63.7	



Assay Class: High Sensitivity DNA Assay  
 Data Path: C:\...ents and Settings\Bioanalyzer\2012-03-16\2012-03-16\_006.xad

Created: 3/16/2012 4:11:00 PM  
 Modified: 3/16/2012 4:45:55 PM

**Electropherogram Summary Continued ...**



**Overall Results for sample 4 : Blank**

Number of peaks found: 1                      Corr. Area 1: 1.0  
 Noise: 0.2

**Peak table for sample 4 : Blank**

Peak	Size [bp]	Conc. [pg/μl]	Molarity [pmol/l]	Observations
1	35	125.00	5,411.3	Lower Marker
2	10,380	75.00	10.9	Upper Marker
3	13,761	0.00	0.0	

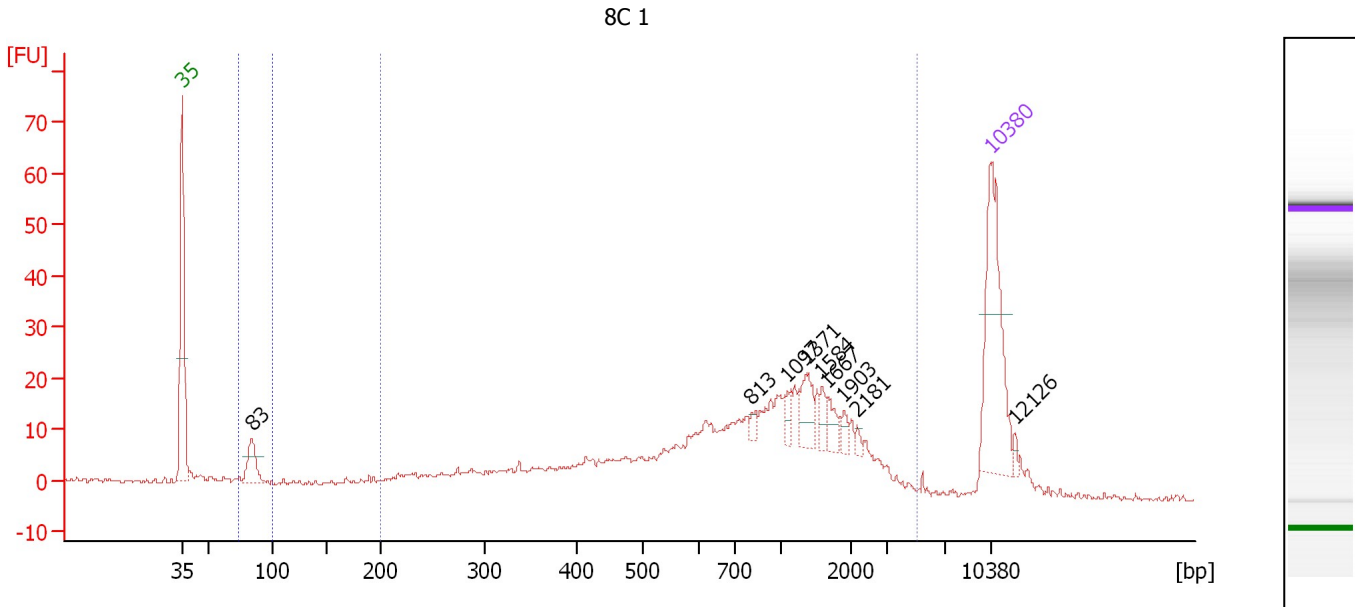
**Region table for sample 4 : Blank**

From [bp]	Molarity [pmol/l]	Average Size [bp]	Conc. [pg/μl]	To [bp]	Corr. Area	% of Total	Size distribution in CV [%]	Color
200	2.0	548	0.57	1,000	1.0	2	37.1	Blue

Assay Class: High Sensitivity DNA Assay  
 Data Path: C:\...ents and Settings\Bioanalyzer\2012-03-16\2012-03-16\_006.xad

Created: 3/16/2012 4:11:00 PM  
 Modified: 3/16/2012 4:45:55 PM

**Electropherogram Summary Continued ...**



**Overall Results for sample 5 : 8C 1**

Number of peaks found: 9                      Corr. Area 1: 445.0  
 Noise: 0.5                                      Corr. Area 2: 18.2

**Peak table for sample 5 : 8C 1**

Peak	Size [bp]	Conc. [pg/μl]	Molarity [pmol/l]	Observations
1	35	125.00	5,411.3	Lower Marker
2	83	28.02	508.8	
3	813	4.57	8.5	
4	1,097	7.40	10.2	
5	1,371	19.59	21.6	
6	1,584	6.90	6.6	
7	1,667	8.55	7.8	
8	1,903	5.10	4.1	
9	2,181	2.59	1.8	
10	10,380	75.00	10.9	Upper Marker
11	12,126	0.00	0.0	

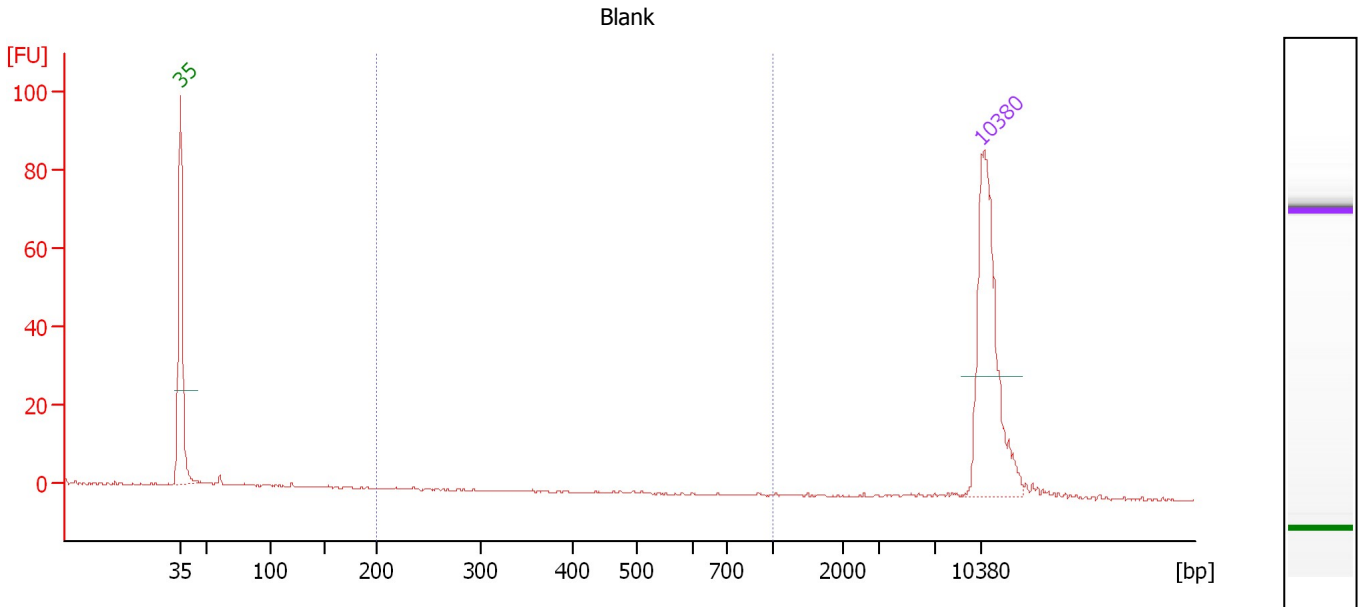
**Region table for sample 5 : 8C 1**

From [bp]	Molarity [pmol/l]	Average Size [bp]	Conc. [pg/μl]	To [bp]	Corr. Area	% of Total	Size distribution in CV [%]	Color
73	601.6	84	33.25	100	18.2	4	5.4	Blue
200	1,296.8	1,053	504.72	5,163	445.0	87	69.3	Dark Blue

Assay Class: High Sensitivity DNA Assay  
 Data Path: C:\...ents and Settings\Bioanalyzer\2012-03-16\2012-03-16\_006.xad

Created: 3/16/2012 4:11:00 PM  
 Modified: 3/16/2012 4:45:55 PM

**Electropherogram Summary Continued ...**



**Overall Results for sample 6 : Blank**

Number of peaks found: 0                      Corr. Area 1: 0.2  
 Noise: 0.2

**Peak table for sample 6 : Blank**

Peak	Size [bp]	Conc. [pg/μl]	Molarity [pmol/l]	Observations
1	35	125.00	5,411.3	Lower Marker
2	10,380	75.00	10.9	Upper Marker

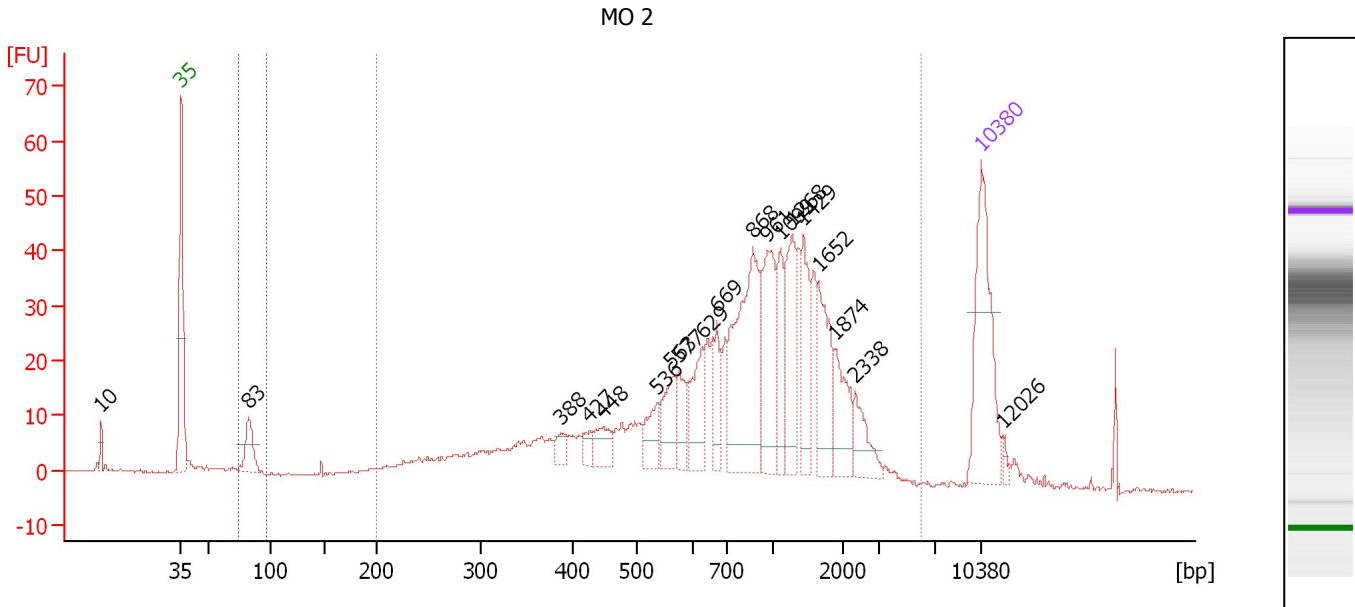
**Region table for sample 6 : Blank**

From [bp]	Molarity [pmol/l]	Average Size [bp]	Conc. [pg/μl]	To [bp]	Corr. Area	% of Total	Size distribution in CV [%]	Color
200	0.7	494	0.16	1,000	0.2	1	45.2	Blue

Assay Class: High Sensitivity DNA Assay  
 Data Path: C:\...ents and Settings\Bioanalyzer\2012-03-16\2012-03-16\_006.xad

Created: 3/16/2012 4:11:00 PM  
 Modified: 3/16/2012 4:45:55 PM

**Electropherogram Summary Continued ...**



**Overall Results for sample 7 : MO 2**

Number of peaks found: 19      Corr. Area 1: 794.1  
 Noise: 0.3      Corr. Area 2: 17.9

**Peak table for sample 7 : MO 2**

Peak	Size [bp]	Conc. [pg/μl]	Molarity [pmol/l]	Observations
1	10	0.00	0.0	
2	35	125.00	5,411.3	Lower Marker
3	83	32.43	593.9	
4	388	9.64	37.7	
5	427	9.01	32.0	
6	448	18.76	63.5	
7	536	21.51	60.8	
8	563	30.26	81.5	
9	577	21.27	55.9	
10	629	35.71	86.1	
11	669	20.34	46.1	
12	868	115.80	202.2	
13	961	65.51	103.2	
14	1,099	29.54	40.7	
15	1,268	49.32	58.9	
16	1,429	37.70	40.0	
17	1,652	43.36	39.8	
18	1,874	31.00	25.1	
19	2,338	20.55	13.3	
20	10,380	75.00	10.9	Upper Marker
21	12,026	0.00	0.0	

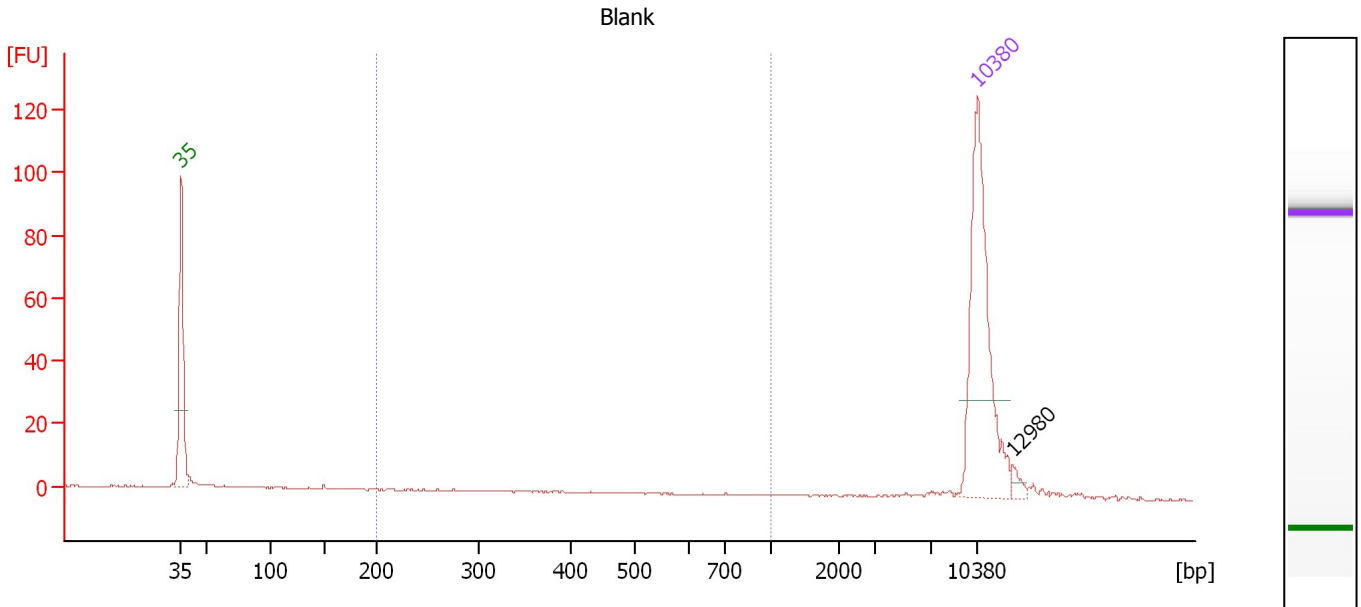
**Region table for sample 7 : MO 2**

From [bp]	Molarity [pmol/l]	Average Size [bp]	Conc. [pg/μl]	To [bp]	Corr. Area	% of Total	Size distribution in CV [%]	Color
75	616.8	83	33.80	96	17.9	2	3.9	Blue
200	2,229.7	1,016	927.06	5,973	794.1	93	61.9	Blue

Assay Class: High Sensitivity DNA Assay  
 Data Path: C:\...ents and Settings\Bioanalyzer\2012-03-16\2012-03-16\_006.xad

Created: 3/16/2012 4:11:00 PM  
 Modified: 3/16/2012 4:45:55 PM

**Electropherogram Summary Continued ...**



**Overall Results for sample 8 : Blank**

Number of peaks found: 1                      Corr. Area 1: 3.3  
 Noise: 0.1

**Peak table for sample 8 : Blank**

Peak	Size [bp]	Conc. [pg/μl]	Molarity [pmol/l]	Observations
1	35	125.00	5,411.3	Lower Marker
2	10,380	75.00	10.9	Upper Marker
3	12,980	0.00	0.0	

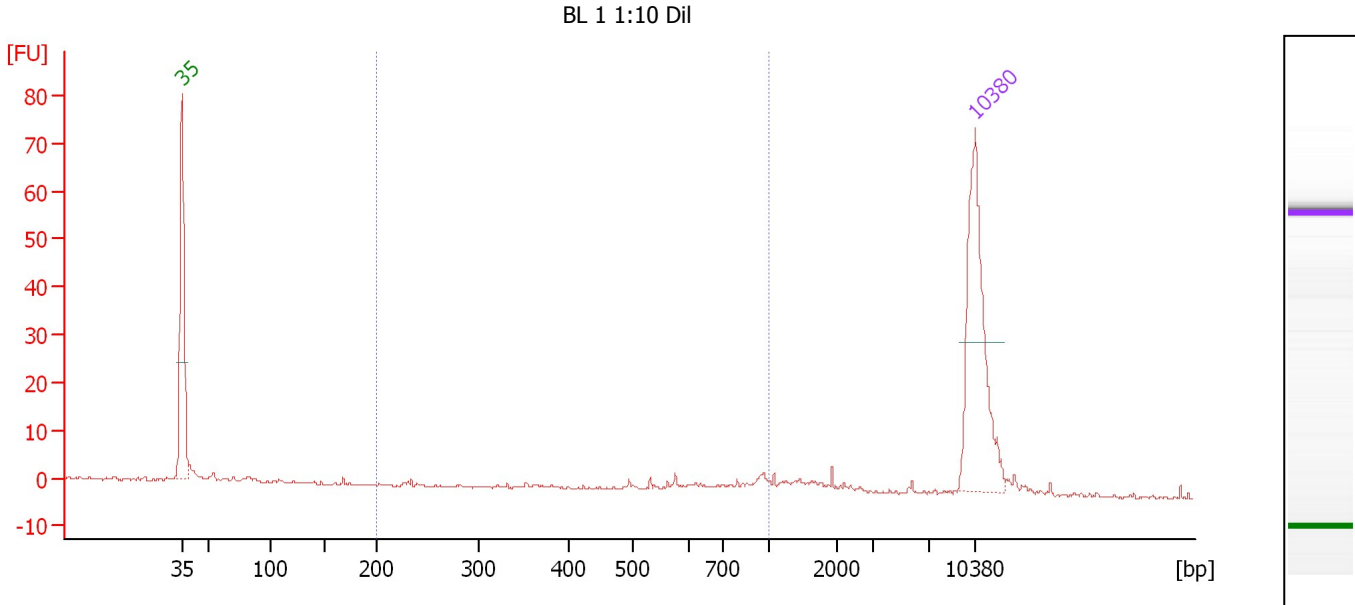
**Region table for sample 8 : Blank**

From [bp]	Molarity [pmol/l]	Average Size [bp]	Conc. [pg/μl]	To [bp]	Corr. Area	% of Total	Size distribution in CV [%]	Color
200	8.8	398	1.87	1,000	3.3	7	44.5	Blue

Assay Class: High Sensitivity DNA Assay  
 Data Path: C:\...ents and Settings\Bioanalyzer\2012-03-16\2012-03-16\_006.xad

Created: 3/16/2012 4:11:00 PM  
 Modified: 3/16/2012 4:45:55 PM

**Electropherogram Summary Continued ...**



**Overall Results for sample 9 : BL 1 1:10 Dil**

Number of peaks found: 0      Corr. Area 1: 10.0  
 Noise: 0.3

**Peak table for sample 9 : BL 1 1:10 Dil**

Peak	Size [bp]	Conc. [pg/μl]	Molarity [pmol/l]	Observations
1	35	125.00	5,411.3	Lower Marker
2	10,380	75.00	10.9	Upper Marker

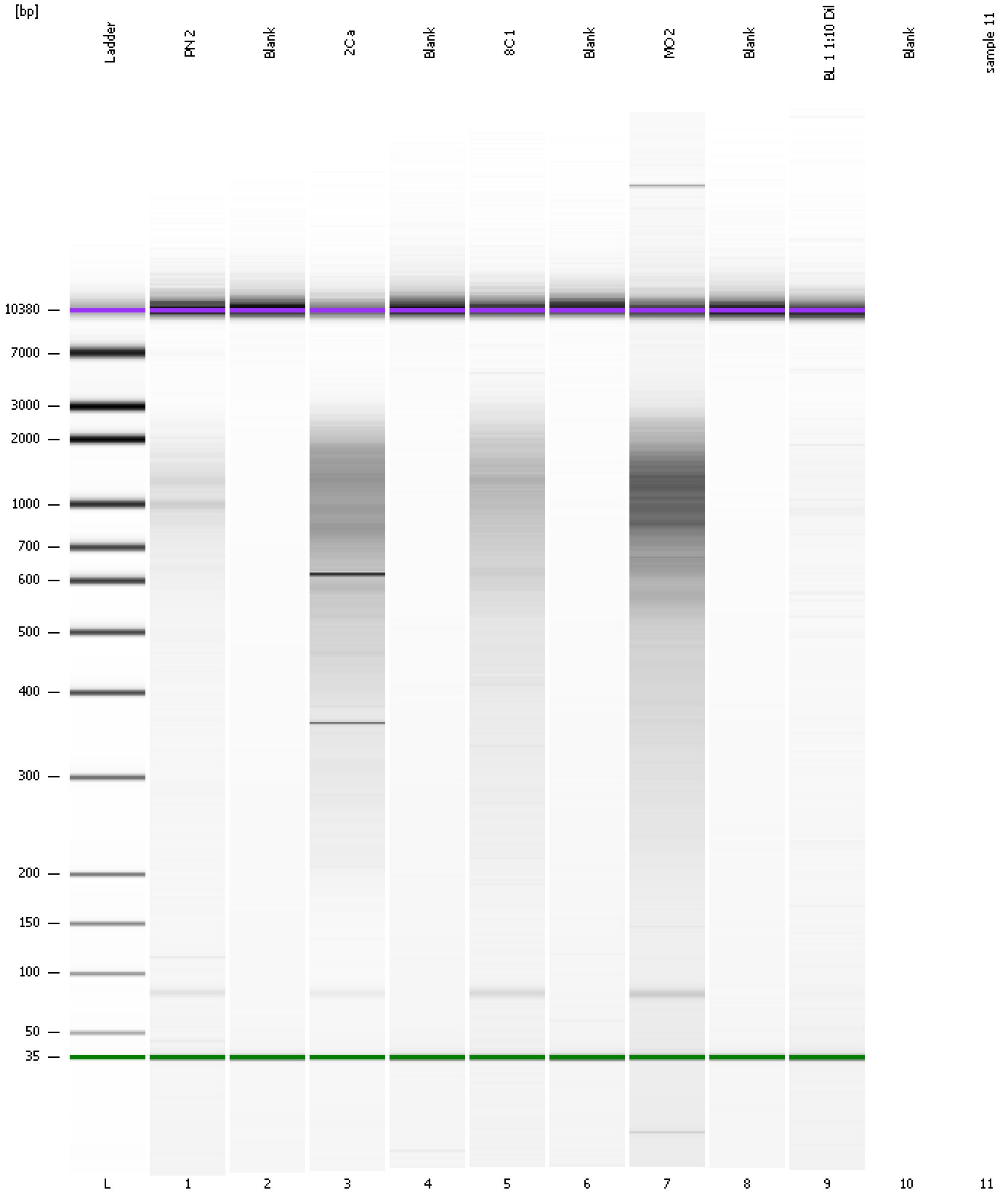
**Region table for sample 9 : BL 1 1:10 Dil**

From [bp]	Molarity [pmol/l]	Average Size [bp]	Conc. [pg/μl]	To [bp]	Corr. Area	% of Total	Size distribution in CV [%]	Color
200	20.6	743	8.59	1,000	10.0	25	26.2	Blue

Assay Class: High Sensitivity DNA Assay  
Data Path: C:\...ents and Settings\Bioanalyzer\2012-03-16\2012-03-16\_006.xad

Created: 3/16/2012 4:11:00 PM  
Modified: 3/16/2012 4:45:55 PM

**Gel Image**



---

Assay Class: High Sensitivity DNA Assay  
Data Path: C:\...ents and Settings\Bioanalyzer\2012-03-16\2012-03-16\_006.xad

Created: 3/16/2012 4:11:00 PM  
Modified: 3/16/2012 4:45:55 PM

**Invalid Samples**

Sample 10 has not been run, no results available.

Sample 11 has not been run, no results available.



Assay Class: High Sensitivity DNA Assay  
 Data Path: C:\...ents and Settings\Bioanalyzer\2012-03-16\2012-03-16\_006.xad

Created: 3/16/2012 4:11:00 PM  
 Modified: 3/16/2012 4:45:55 PM

**Run Logbook**

Description	Number	Source	Category	Sub Category	Time	Time Zone	User	Host
Run aborted on port 1		Instrument	Run		3/16/2012 4:45:52 PM	(GMT --07:00) Pacific Standard Time	UC Davis	D8XSMGH1
Run started on port 1 (File: C:\Documents and Settings\Bioanalyzer\2012-03-16\2012-03-16_006.xad)		Instrument	Run		3/16/2012 4:11:00 PM	(GMT --07:00) Pacific Standard Time	UC Davis	D8XSMGH1
Product Number : G2938B		Instrument	Run		3/16/2012 4:11:00 PM	(GMT --07:00) Pacific Standard Time	UC Davis	D8XSMGH1
Name :		Instrument	Run		3/16/2012 4:11:00 PM	(GMT --07:00) Pacific Standard Time	UC Davis	D8XSMGH1
Vendor : Agilent Technologies		Instrument	Run		3/16/2012 4:11:00 PM	(GMT --07:00) Pacific Standard Time	UC Davis	D8XSMGH1
Serial# : DE13701086		Instrument	Run		3/16/2012 4:11:00 PM	(GMT --07:00) Pacific Standard Time	UC Davis	D8XSMGH1
Firmware : C.01.069		Instrument	Run		3/16/2012 4:11:00 PM	(GMT --07:00) Pacific Standard Time	UC Davis	D8XSMGH1
Cartridge : Electrode		Instrument	Run		3/16/2012 4:11:00 PM	(GMT --07:00) Pacific Standard Time	UC Davis	D8XSMGH1