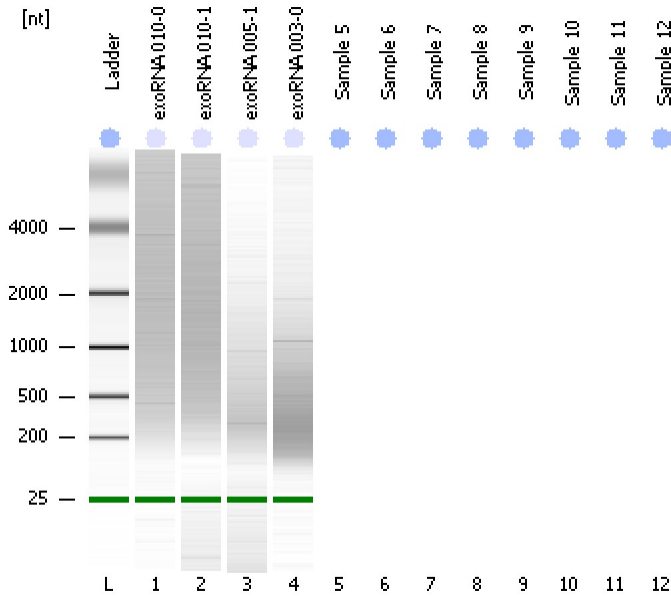


Assay Class: Eukaryote Total RNA Nano  
Data Path: C:\...ents and Settings\Bioanalyzer\2012-03-19\2012-03-19\_001.xad

Created: 3/19/2012 12:51:00 PM  
Modified: 3/19/2012 1:47:59 PM

**Electrophoresis File Run Summary**



Instrument Information:

Instrument Name: DE13701086      Firmware: C.01.069  
Serial#: DE13701086      Type: G2938B

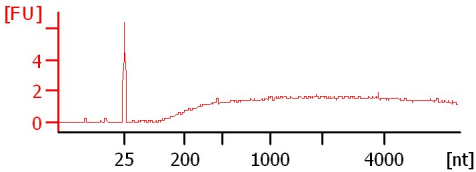
Assay Information:

Assay Origin Path: C:\Program Files\Agilent\2100 bioanalyzer\2100 expert\assays\RNA\Eukaryote Total RNA Nano Series II.xsy  
Assay Class: Eukaryote Total RNA Nano  
Version: 2.6  
Assay Comments: Total RNA Analysis ng sensitivity (Eukaryote)  
© Copyright 2003 - 2009 Agilent Technologies, Inc.

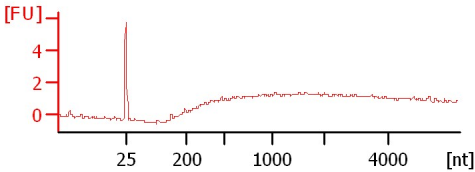
Chip Information:

Chip Lot #:   
Reagent Kit Lot #:   
Chip Comments:

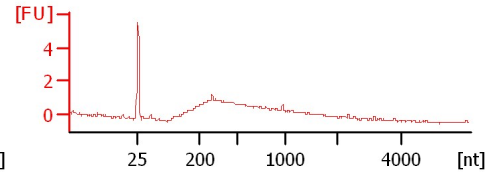
**exoRNA 010-0**  
RIN: 1.80



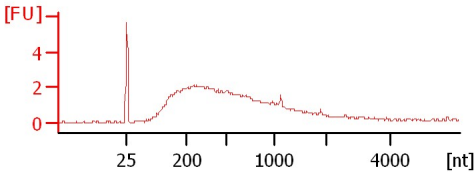
**exoRNA 010-1**  
RIN: 1.90



**exoRNA 005-1**  
RIN: 2.60



**exoRNA 003-0**  
RIN: 2.70



Assay Class: Eukaryote Total RNA Nano  
 Data Path: C:\...ents and Settings\Bioanalyzer\2012-03-19\2012-03-19\_001.xad

Created: 3/19/2012 12:51:00 PM  
 Modified: 3/19/2012 1:47:59 PM

**Electrophoresis File Run Summary (Chip Summary)**

Sample Name	Sample Comment	Status	Result Label	Result Color
exoRNA 010-0		✓	RIN: 1.80	
exoRNA 010-1		✓	RIN: 1.90	
exoRNA 005-1		✓	RIN: 2.60	
exoRNA 003-0		✓	RIN: 2.70	
Sample 5			All Other Samples	
Sample 6			All Other Samples	
Sample 7			All Other Samples	
Sample 8			All Other Samples	
Sample 9			All Other Samples	
Sample 10			All Other Samples	
Sample 11			All Other Samples	
Sample 12			All Other Samples	
Ladder		✓	All Other Samples	

**Chip Lot #**

**Reagent Kit Lot #**

**Chip Comments :**

Assay Class: Eukaryote Total RNA Nano  
Data Path: C:\...ents and Settings\Bioanalyzer\2012-03-19\2012-03-19\_001.xad

Created: 3/19/2012 12:51:00 PM  
Modified: 3/19/2012 1:47:59 PM

**Electrophoresis Assay Details**

**General Analysis Settings**

Number of Available Sample and Ladder Wells (Max.) : 13  
Minimum Visible Range [s] : 17  
Maximum Visible Range [s] : 70  
Start Analysis Time Range [s] : 19  
End Analysis Time Range [s] : 69  
Ladder Concentration [ng/μl] : 150  
Lower Marker Concentration [ng/μl] : 0  
Upper Marker Concentration [ng/μl] : 0  
Used Lower Marker for Quantitation  
Standard Curve Fit is Logarithmic  
Show Data Aligned to Lower Marker

**Integrator Settings**

Integration Start Time [s] : 19  
Integration End Time [s] : 69  
Slope Threshold : 0.6  
Height Threshold [FU] : 0.5  
Area Threshold : 0.2  
Width Threshold [s] : 0.5  
Baseline Plateau [s] : 6

**Filter Settings**

Filter Width [s] : 0.5  
Polynomial Order : 4

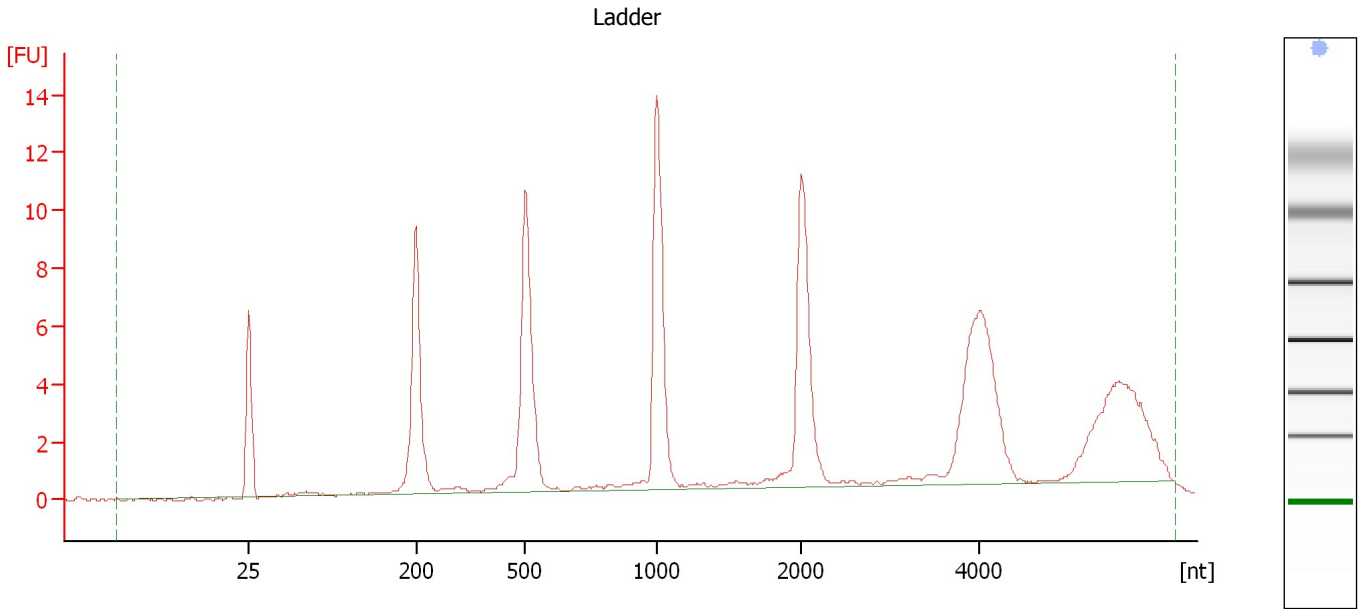
**Ladder**

Ladder Peak	Size
1	25
2	200
3	500
4	1000
5	2000
6	4000

Assay Class: Eukaryote Total RNA Nano  
Data Path: C:\...ents and Settings\Bioanalyzer\2012-03-19\2012-03-19\_001.xad

Created: 3/19/2012 12:51:00 PM  
Modified: 3/19/2012 1:47:59 PM

**Electropherogram Summary**



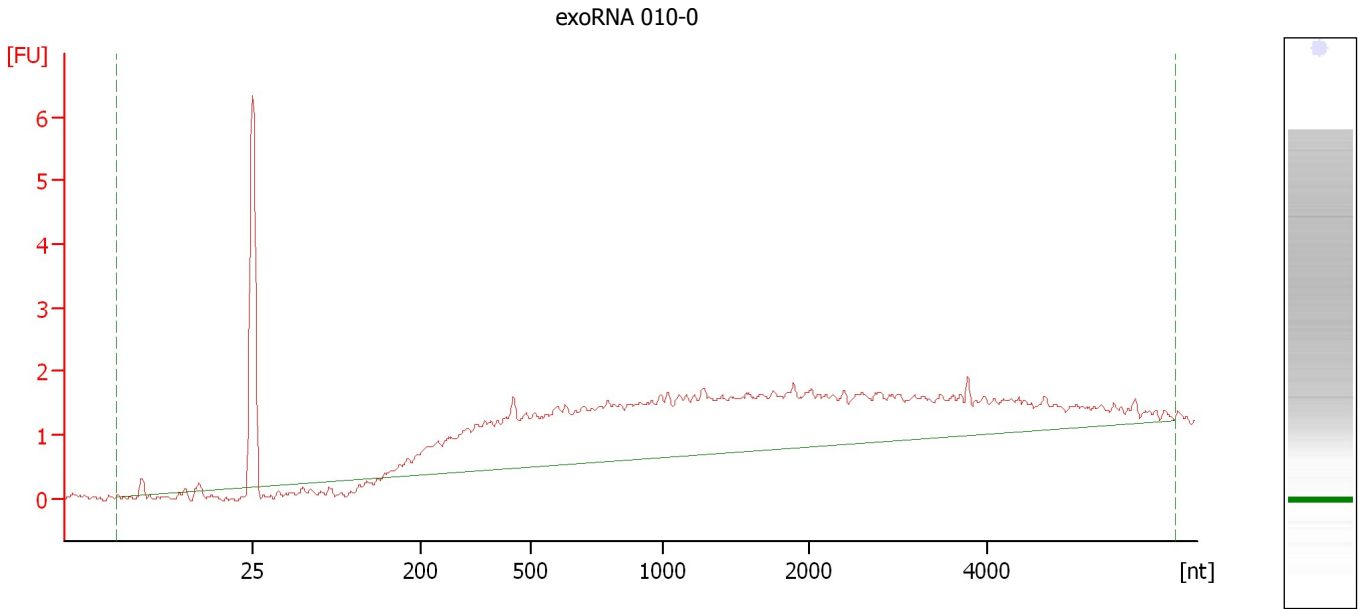
**Overall Results for Ladder**

RNA Area:	95.2	Result Flagging Color:	<span style="background-color: #add8e6; border: 1px solid black; display: inline-block; width: 20px; height: 10px;"></span>
RNA Concentration:	150 ng/μl	Result Flagging Label:	All Other Samples

Assay Class: Eukaryote Total RNA Nano  
Data Path: C:\...ents and Settings\Bioanalyzer\2012-03-19\2012-03-19\_001.xad

Created: 3/19/2012 12:51:00 PM  
Modified: 3/19/2012 1:47:59 PM

**Electropherogram Summary Continued ...**



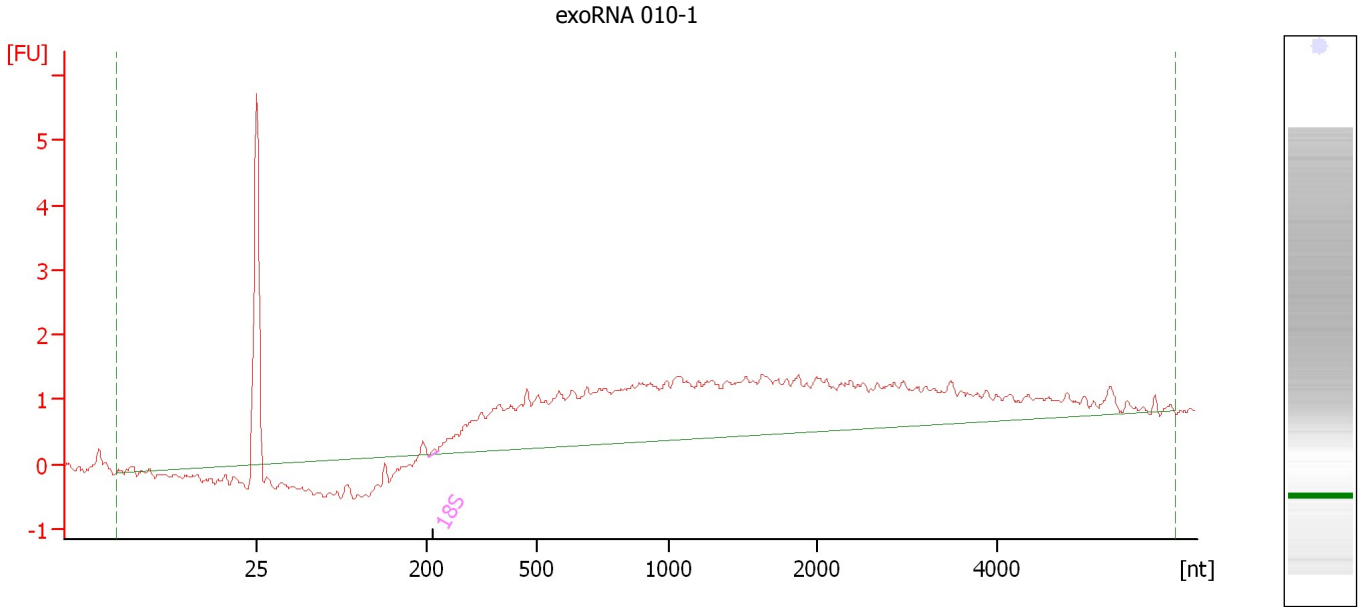
**Overall Results for sample 1 : exoRNA 010-0**

RNA Area:	50.0	RNA Integrity Number (RIN):	1.8 (B.02.08, Anomaly Threshold(s) manually adapted)
RNA Concentration:	79 ng/μl	Result Flagging Color:	<span style="background-color: #ccccff; border: 1px solid black; display: inline-block; width: 20px; height: 10px;"></span>
rRNA Ratio [28s / 18s]:	0.0	Result Flagging Label:	RIN: 1.80

Assay Class: Eukaryote Total RNA Nano  
Data Path: C:\...ents and Settings\Bioanalyzer\2012-03-19\2012-03-19\_001.xad

Created: 3/19/2012 12:51:00 PM  
Modified: 3/19/2012 1:47:59 PM

**Electropherogram Summary Continued ...**



**Overall Results for sample 2 : exoRNA 010-1**

RNA Area:	42.3	RNA Integrity Number (RIN):	1.9 (B.02.08, Anomaly Threshold(s) manually adapted)
RNA Concentration:	67 ng/μl	Result Flagging Color:	<span style="background-color: #ccccff; border: 1px solid black; display: inline-block; width: 20px; height: 10px;"></span>
rRNA Ratio [28s / 18s]:	0.0	Result Flagging Label:	RIN: 1.90

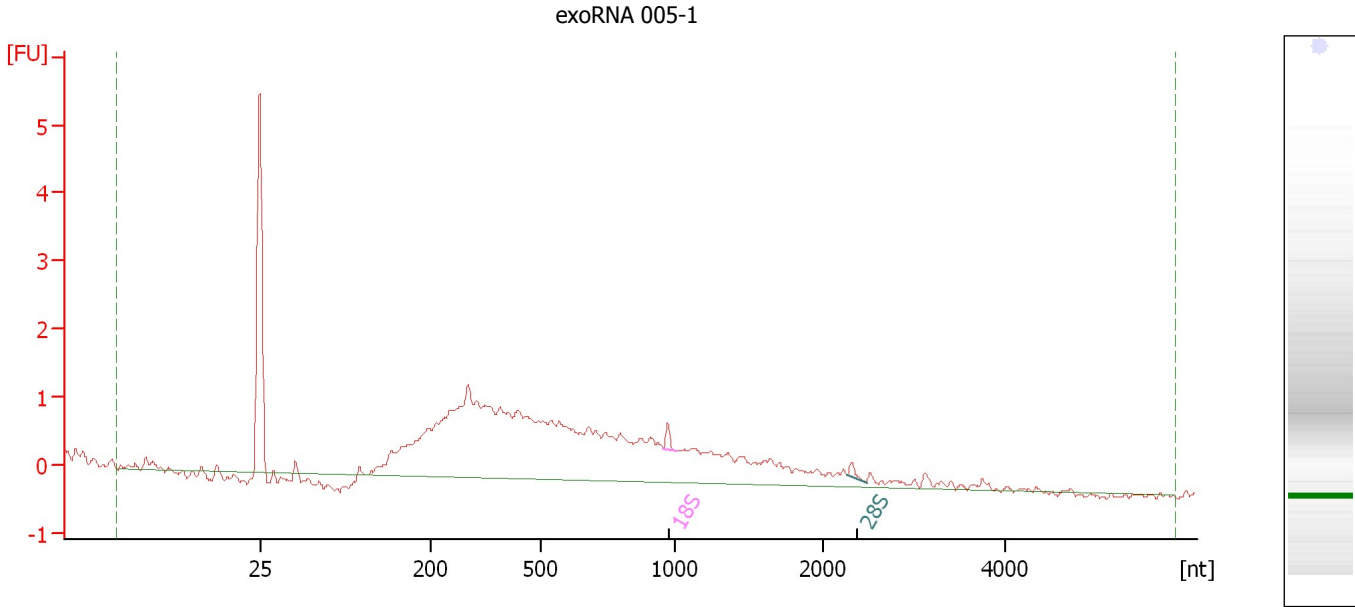
**Fragment table for sample 2 : exoRNA 010-1**

Name	Start Size [nt]	End Size [nt]	Area	% of total Area
18S	235	205	0.0	0.0

Assay Class: Eukaryote Total RNA Nano  
Data Path: C:\...ents and Settings\Bioanalyzer\2012-03-19\2012-03-19\_001.xad

Created: 3/19/2012 12:51:00 PM  
Modified: 3/19/2012 1:47:59 PM

**Electropherogram Summary Continued ...**



**Overall Results for sample 3 : exoRNA 005-1**

RNA Area: 34.4                      RNA Integrity Number (RIN): 2.6 (B.02.08)  
RNA Concentration: 54 ng/µl              Result Flagging Color:   
rRNA Ratio [28s / 18s]: 0.6              Result Flagging Label: RIN: 2.60

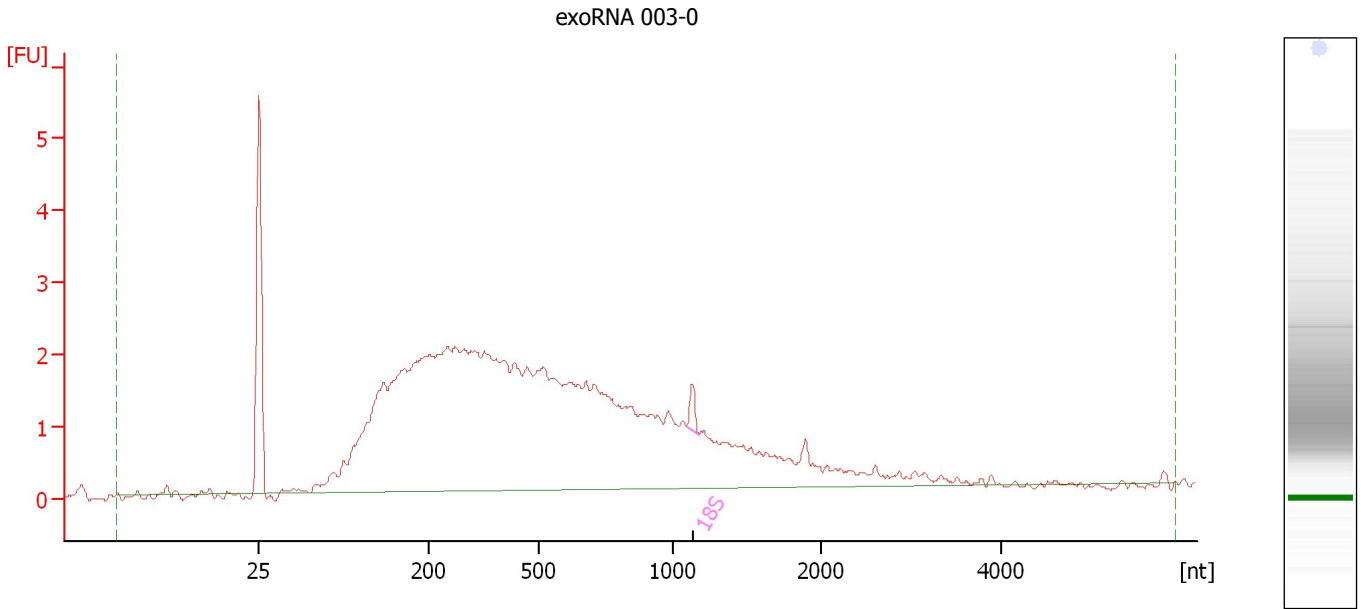
**Fragment table for sample 3 : exoRNA 005-1**

Name	Start Size [nt]	End Size [nt]	Area	% of total Area
18S	954	1,011	0.2	0.6
28S	2,271	2,472	0.1	0.3

Assay Class: Eukaryote Total RNA Nano  
Data Path: C:\...ents and Settings\Bioanalyzer\2012-03-19\2012-03-19\_001.xad

Created: 3/19/2012 12:51:00 PM  
Modified: 3/19/2012 1:47:59 PM

**Electropherogram Summary Continued ...**



**Overall Results for sample 4 : exoRNA 003-0**

RNA Area:	73.1	RNA Integrity Number (RIN):	2.7 (B.02.08)
RNA Concentration:	115 ng/μl	Result Flagging Color:	<span style="background-color: #ccccff; border: 1px solid black; display: inline-block; width: 20px; height: 10px;"></span>
rRNA Ratio [28s / 18s]:	0.0	Result Flagging Label:	RIN: 2.70

**Fragment table for sample 4 : exoRNA 003-0**

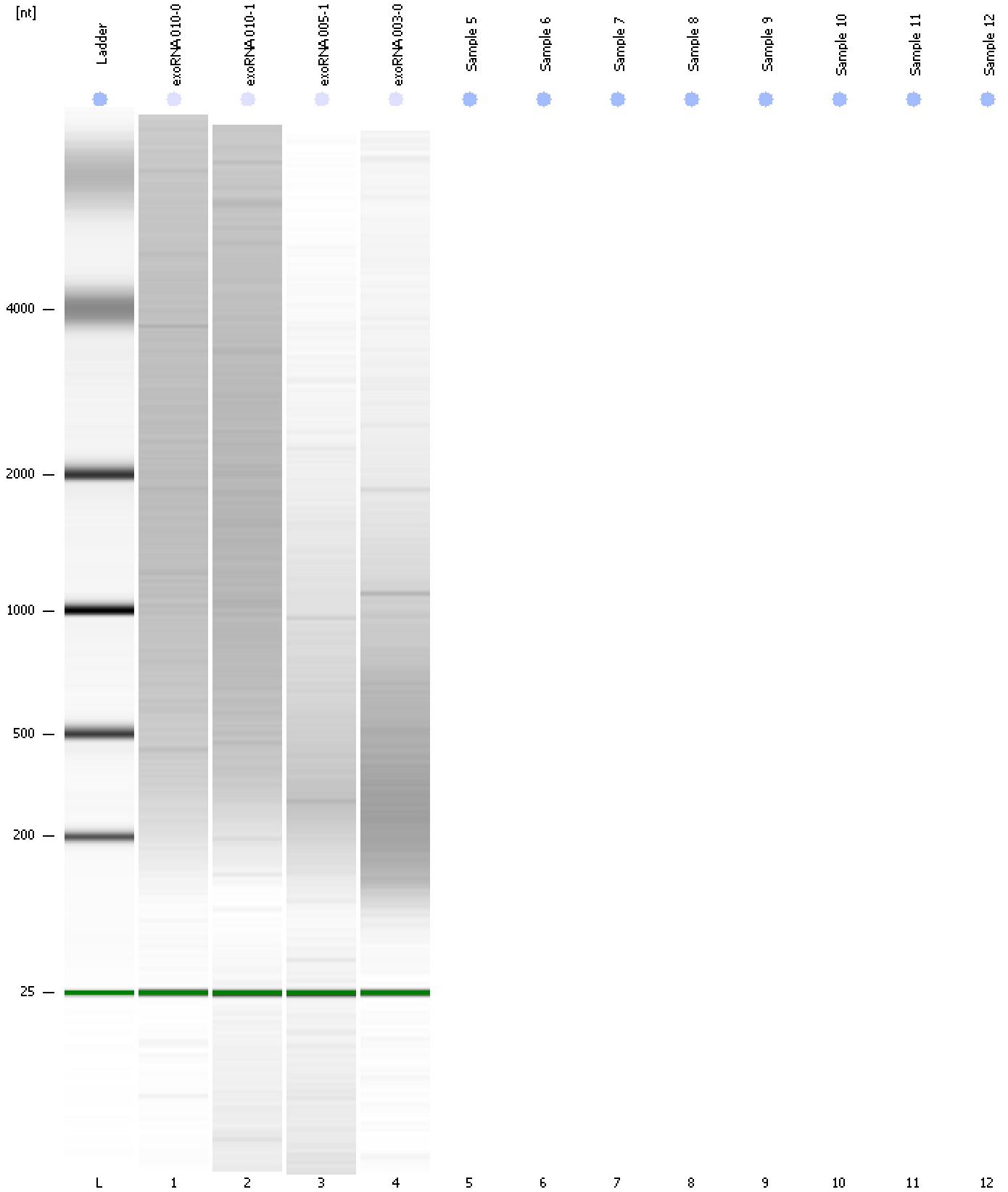
Name	Start Size [nt]	End Size [nt]	Area	% of total Area
18S	1,089	1,175	0.3	0.5



Assay Class: Eukaryote Total RNA Nano  
Data Path: C:\...ents and Settings\Bioanalyzer\2012-03-19\2012-03-19\_001.xad

Created: 3/19/2012 12:51:00 PM  
Modified: 3/19/2012 1:47:59 PM

**Gel Image**



Assay Class: Eukaryote Total RNA Nano  
Data Path: C:\...ents and Settings\Bioanalyzer\2012-03-19\2012-03-19\_001.xad

Created: 3/19/2012 12:51:00 PM  
Modified: 3/19/2012 1:47:59 PM

**Invalid Samples**

- Sample 5 has not been run, no results available.
- Sample 6 has not been run, no results available.
- Sample 7 has not been run, no results available.
- Sample 8 has not been run, no results available.
- Sample 9 has not been run, no results available.
- Sample 10 has not been run, no results available.
- Sample 11 has not been run, no results available.
- Sample 12 has not been run, no results available.

Assay Class: Eukaryote Total RNA Nano  
 Data Path: C:\...ents and Settings\Bioanalyzer\2012-03-19\2012-03-19\_001.xad

Created: 3/19/2012 12:51:00 PM  
 Modified: 3/19/2012 1:47:59 PM

**Run Logbook**

Description	Number	Source	Category	Sub Category	Time	Time Zone	User	Host
Run ended on port 1 (Number of wells acquired: 5)		Instrument	Run		3/19/2012 1:03:51 PM	(GMT --07:00) Pacific Standard Time	UC Davis	D8XSMGH1
Run started on port 1 (File: C:\Documents and Settings\Bioanalyzer\2012-03-19\2012-03-19_001.xad)		Instrument	Run		3/19/2012 12:51:06 PM	(GMT --07:00) Pacific Standard Time	UC Davis	D8XSMGH1
Product Number : G2938B		Instrument	Run		3/19/2012 12:51:06 PM	(GMT --07:00) Pacific Standard Time	UC Davis	D8XSMGH1
Name :		Instrument	Run		3/19/2012 12:51:06 PM	(GMT --07:00) Pacific Standard Time	UC Davis	D8XSMGH1
Vendor : Agilent Technologies		Instrument	Run		3/19/2012 12:51:06 PM	(GMT --07:00) Pacific Standard Time	UC Davis	D8XSMGH1
Serial# : DE13701086		Instrument	Run		3/19/2012 12:51:06 PM	(GMT --07:00) Pacific Standard Time	UC Davis	D8XSMGH1
Firmware : C.01.069		Instrument	Run		3/19/2012 12:51:06 PM	(GMT --07:00) Pacific Standard Time	UC Davis	D8XSMGH1
Cartridge : Electrode		Instrument	Run		3/19/2012 12:51:06 PM	(GMT --07:00) Pacific Standard Time	UC Davis	D8XSMGH1