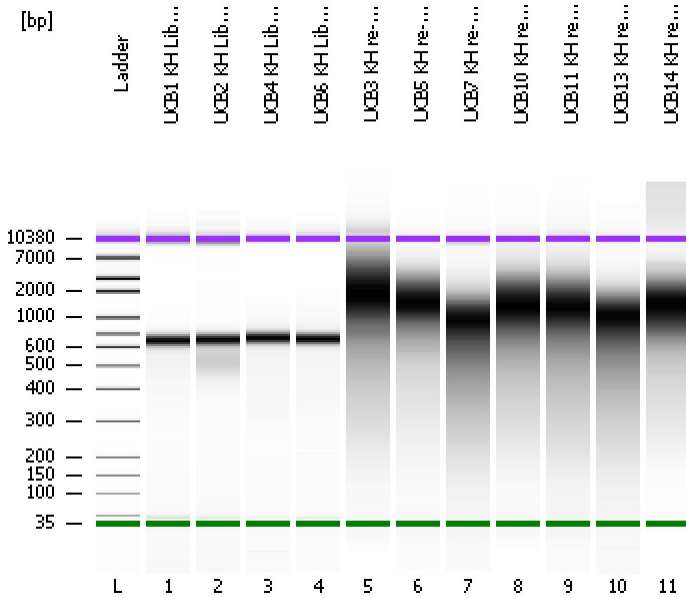


Assay Class: High Sensitivity DNA Assay
Data Path: C:\...ents and Settings\Bioanalyzer\2012-03-19\2012-03-19_003.xad

Created: 3/19/2012 3:15:22 PM
Modified: 3/19/2012 4:50:55 PM

Electrophoresis File Run Summary



Instrument Information:

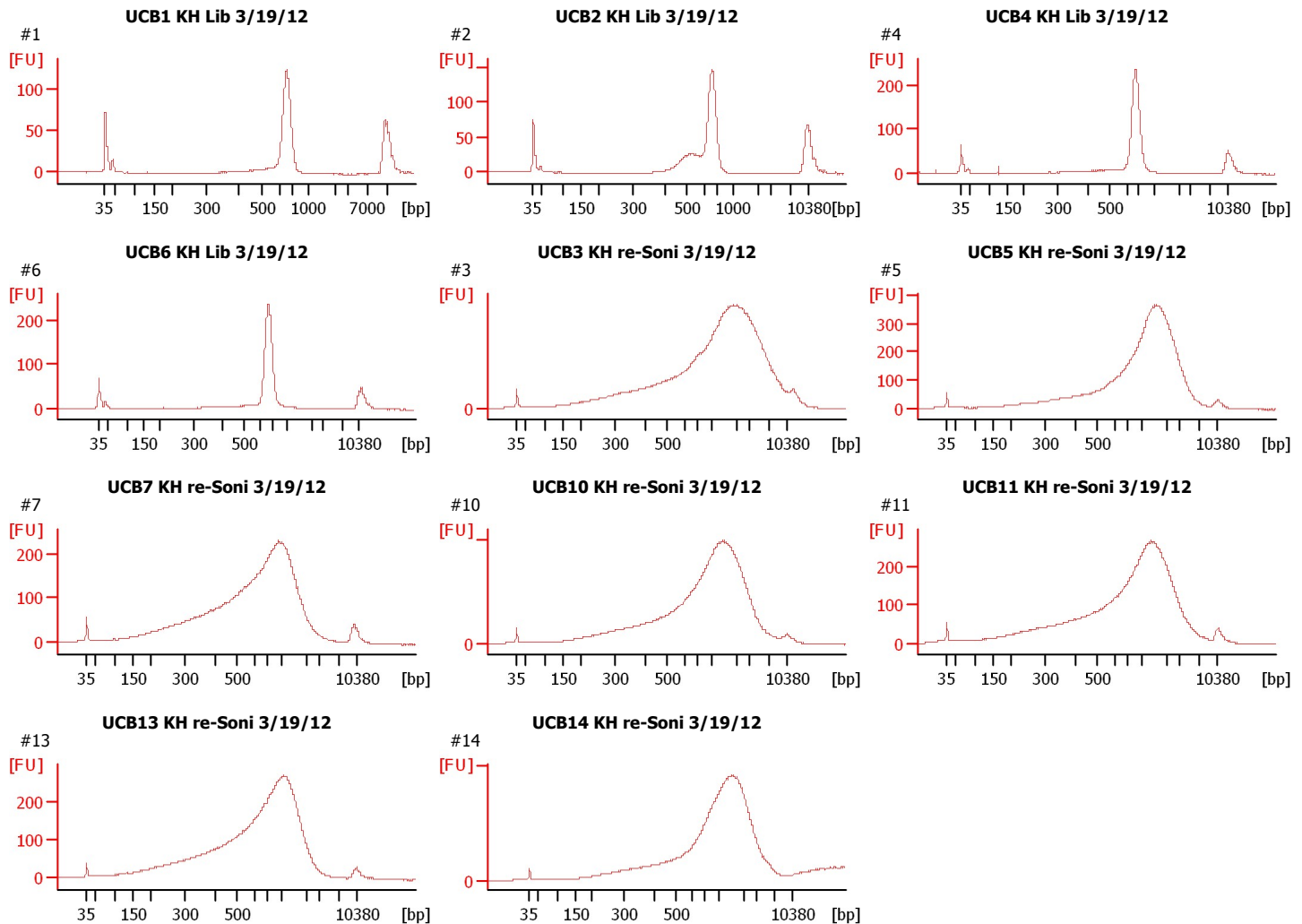
Instrument Name: DE13701086 Firmware: C.01.069
Serial#: DE13701086 Type: G2938B

Assay Information:

Assay Origin Path: C:\Program Files\Agilent\2100 bioanalyzer\2100 expert\assays\dsDNA\High Sensitivity DNA.xsy
Assay Class: High Sensitivity DNA Assay
Version: 1.03
Assay Comments: Copyright © 2003-2010 Agilent Technologies

Chip Information:

Chip Lot #:
Reagent Kit Lot #:
Chip Comments:



Assay Class: High Sensitivity DNA Assay
Data Path: C:\...ents and Settings\Bioanalyzer\2012-03-19\2012-03-19_003.xad

Created: 3/19/2012 3:15:22 PM
Modified: 3/19/2012 4:50:55 PM

Electrophoresis File Run Summary (Chip Summary)

Sample Name	Sample Comment	Rest. Digest	Status	Observation	Result Label	Result Color
UCB1 KH Lib 3/19/12	#1	<input type="checkbox"/>	✓			
UCB2 KH Lib 3/19/12	#2	<input type="checkbox"/>	✓			
UCB4 KH Lib 3/19/12	#4	<input type="checkbox"/>	✓			
UCB6 KH Lib 3/19/12	#6	<input type="checkbox"/>	✓			
UCB3 KH re-Soni 3/19/12	#3	<input type="checkbox"/>	✓			
UCB5 KH re-Soni 3/19/12	#5	<input type="checkbox"/>	✓			
UCB7 KH re-Soni 3/19/12	#7	<input type="checkbox"/>	✓			
UCB10 KH re-Soni 3/19/12	#10	<input type="checkbox"/>	✓			
UCB11 KH re-Soni 3/19/12	#11	<input type="checkbox"/>	✓			
UCB13 KH re-Soni 3/19/12	#13	<input type="checkbox"/>	✓			
UCB14 KH re-Soni 3/19/12	#14	<input type="checkbox"/>	✓			
Ladder		<input type="checkbox"/>	✓			

Chip Lot #**Reagent Kit Lot #****Chip Comments :**

Assay Class: High Sensitivity DNA Assay
Data Path: C:\...ents and Settings\Bioanalyzer\2012-03-19\2012-03-19_003.xad

Created: 3/19/2012 3:15:22 PM
Modified: 3/19/2012 4:50:55 PM

Electrophoresis Assay Details

General Analysis Settings

Number of Available Sample and Ladder Wells (Max.) : 12
Minimum Visible Range [s] : 32
Maximum Visible Range [s] : 138
Start Analysis Time Range [s] : 33
End Analysis Time Range [s] : 137.5
Ladder Concentration [pg/μl] : 1950
Uses Standard Area for Ladder Fragments
Lower Marker Concentration [pg/μl] : 125
Upper Marker Concentration [pg/μl] : 75
Used Upper Marker for Quantitation
Standard Curve Fit is Point to Point
Show Data Aligned to Lower and Upper Marker

Integrator Settings

Integration Start Time [s] : 33.05
Integration End Time [s] : 137
Slope Threshold : 0.8
Height Threshold [FU] : 5
Area Threshold : 0.1
Width Threshold [s] : 0.6
Baseline Plateau [s] : 0.5

Filter Settings

Filter Width [s] : 0.5
Polynomial Order : 4

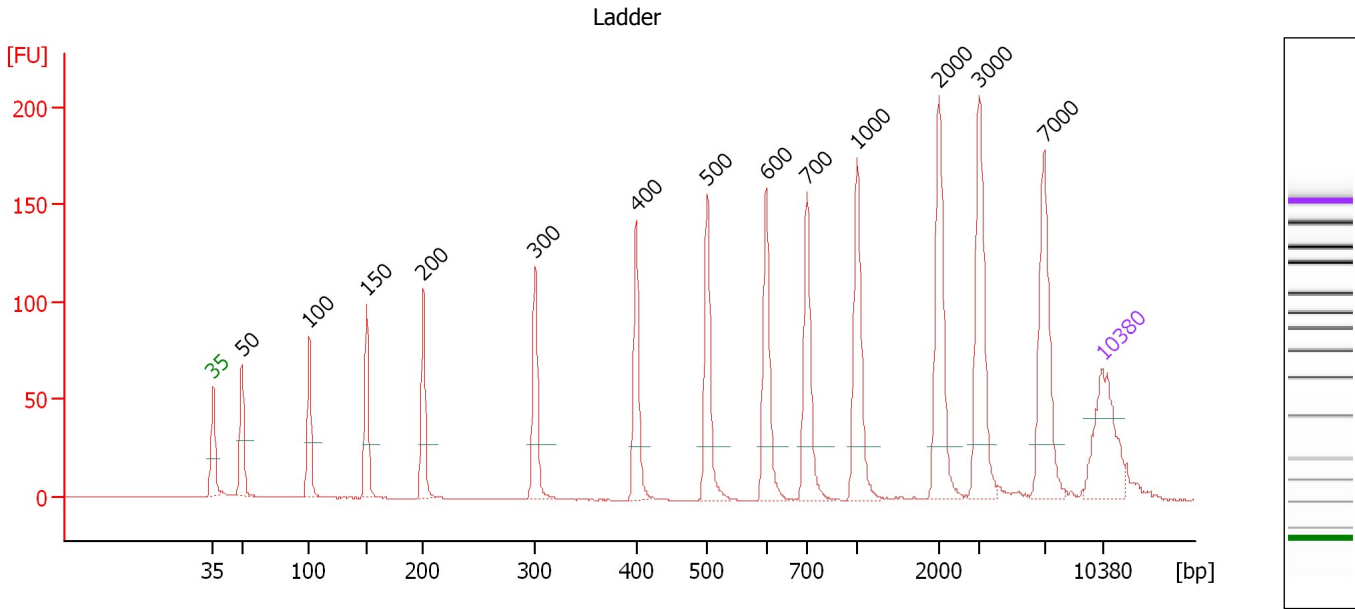
Ladder

Ladder Peak	Size	Area
1	35	160
2	50	210
3	100	208
4	150	221
5	200	242
6	300	270
7	400	305
8	500	306
9	600	336
10	700	321
11	1000	366
12	2000	413
13	3000	411
14	7000	400
15	10380	214

Assay Class: High Sensitivity DNA Assay
 Data Path: C:\...ents and Settings\Bioanalyzer\2012-03-19\2012-03-19_003.xad

Created: 3/19/2012 3:15:22 PM
 Modified: 3/19/2012 4:50:55 PM

Electropherogram Summary



Overall Results for Ladder

Noise: 0.1

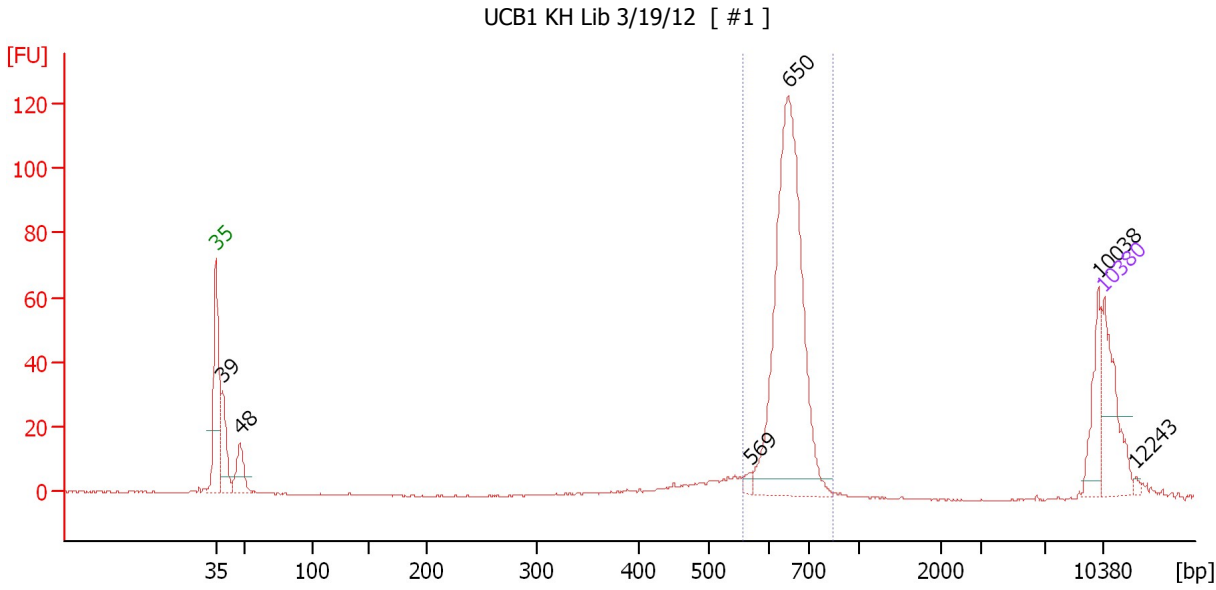
Peak table for Ladder

Peak	Size [bp]	Conc. [pg/μl]	Molarity [pmol/l]	Observations
1	35	125.00	5,411.3	Lower Marker
2	50	150.00	4,545.5	Ladder Peak
3	100	150.00	2,272.7	Ladder Peak
4	150	150.00	1,515.2	Ladder Peak
5	200	150.00	1,136.4	Ladder Peak
6	300	150.00	757.6	Ladder Peak
7	400	150.00	568.2	Ladder Peak
8	500	150.00	454.5	Ladder Peak
9	600	150.00	378.8	Ladder Peak
10	700	150.00	324.7	Ladder Peak
11	1,000	150.00	227.3	Ladder Peak
12	2,000	150.00	113.6	Ladder Peak
13	3,000	150.00	75.8	Ladder Peak
14	7,000	150.00	32.5	Ladder Peak
15	10,380	75.00	10.9	Upper Marker

Assay Class: High Sensitivity DNA Assay
 Data Path: C:\...ents and Settings\Bioanalyzer\2012-03-19\2012-03-19_003.xad

Created: 3/19/2012 3:15:22 PM
 Modified: 3/19/2012 4:50:55 PM

Electropherogram Summary Continued ...



Overall Results for sample 1 : UCB1 KH Lib 3/19/12

Number of peaks found: 6 Corr. Area 1: 362.9
 Noise: 0.2

Peak table for sample 1 : UCB1 KH Lib 3/19/12

Peak	Size [bp]	Conc. [pg/μl]	Molarity [pmol/l]	Observations
1	35	125.00	5,411.3	Lower Marker
2	39	86.49	3,393.7	
3	48	57.91	1,836.0	
4	569	7.62	20.3	
5	650	507.92	1,183.3	
6	10,038	50.20	7.6	
7	10,380	75.00	10.9	Upper Marker
8	12,243	0.00	0.0	

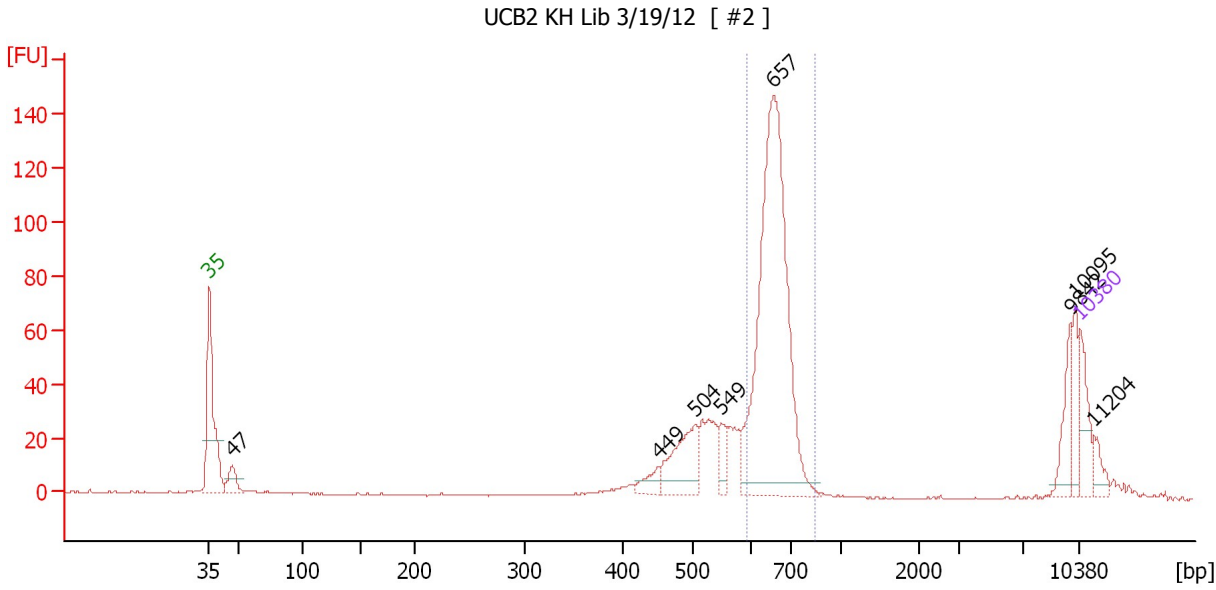
Region table for sample 1 : UCB1 KH Lib 3/19/12

From [bp]	Molarity [pmol/l]	Average Size [bp]	Conc. [pg/μl]	To [bp]	Corr. Area	% of Total	Size distribution in CV [%]	Color
556	1,196.8	651	513.00	845	362.9	71	5.5	Blue

Assay Class: High Sensitivity DNA Assay
 Data Path: C:\...ents and Settings\Bioanalyzer\2012-03-19\2012-03-19_003.xad

Created: 3/19/2012 3:15:22 PM
 Modified: 3/19/2012 4:50:55 PM

Electropherogram Summary Continued ...



Overall Results for sample 2 : UCB2 KH Lib 3/19/12

Number of peaks found: 8 Corr. Area 1: 439.2
 Noise: 0.2

Peak table for sample 2 : UCB2 KH Lib 3/19/12

Peak	Size [bp]	Conc. [pg/μl]	Molarity [pmol/l]	Observations
1	35	125.00	5,411.3	Lower Marker
2	47	61.37	1,970.1	
3	449	38.65	130.3	
4	504	166.58	500.7	
5	549	50.43	139.3	
6	657	953.04	2,196.3	
7	9,842	70.99	10.9	
8	10,095	54.55	8.2	
9	10,380	75.00	10.9	Upper Marker
10	11,204	0.00	0.0	

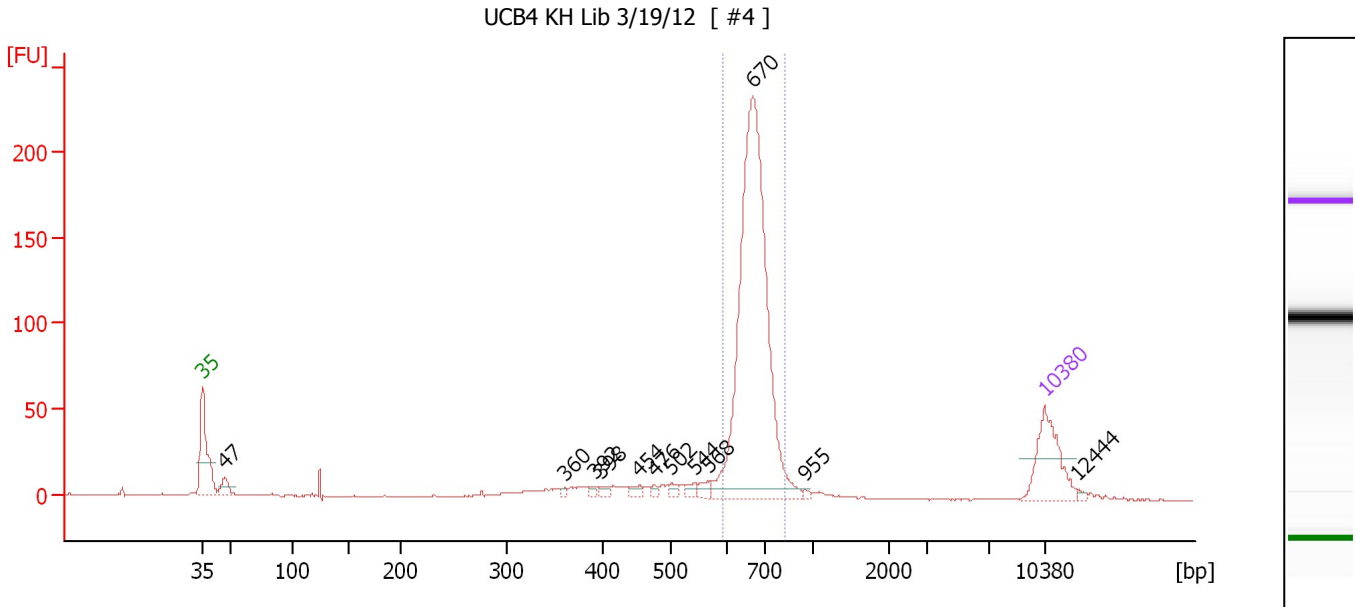
Region table for sample 2 : UCB2 KH Lib 3/19/12

From [bp]	Molarity [pmol/l]	Average Size [bp]	Conc. [pg/μl]	To [bp]	Corr. Area	% of Total	Size distribution in CV [%]	Color
595	2,118.1	661	922.23	853	439.2	53	5.6	Blue

Assay Class: High Sensitivity DNA Assay
 Data Path: C:\...ents and Settings\Bioanalyzer\2012-03-19\2012-03-19_003.xad

Created: 3/19/2012 3:15:22 PM
 Modified: 3/19/2012 4:50:55 PM

Electropherogram Summary Continued ...



Overall Results for sample 3 : UCB4 KH Lib 3/19/12

Number of peaks found: 12 Corr. Area 1: 688.3
 Noise: 0.2

Peak table for sample 3 : UCB4 KH Lib 3/19/12

Peak	Size [bp]	Conc. [pg/μl]	Molarity [pmol/l]	Observations
1	35	125.00	5,411.3	Lower Marker
2	47	27.89	893.0	
3	360	4.53	19.0	
4	392	6.42	24.8	
5	398	7.77	29.6	
6	454	10.05	33.5	
7	476	5.57	17.7	
8	502	7.78	23.5	
9	544	10.12	28.2	
10	568	11.51	30.7	
11	670	678.26	1,533.9	
12	955	2.90	4.6	
13	10,380	75.00	10.9	Upper Marker
14	12,444	0.00	0.0	

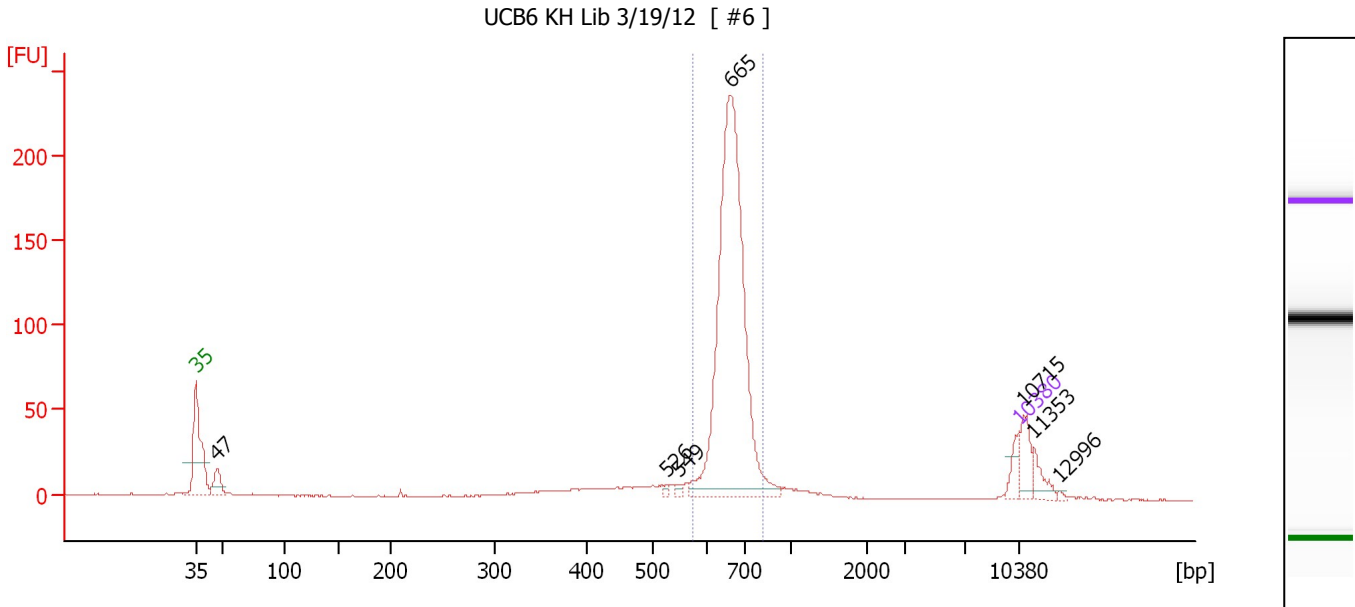
Region table for sample 3 : UCB4 KH Lib 3/19/12

From [bp]	Molarity [pmol/l]	Average Size [bp]	Conc. [pg/μl]	To [bp]	Corr. Area	% of Total	Size distribution in CV [%]	Color
594	1,462.9	676	651.30	834	688.3	75	6.0	Blue

Assay Class: High Sensitivity DNA Assay
 Data Path: C:\...ents and Settings\Bioanalyzer\2012-03-19\2012-03-19_003.xad

Created: 3/19/2012 3:15:22 PM
 Modified: 3/19/2012 4:50:55 PM

Electropherogram Summary Continued ...



Overall Results for sample 4 : UCB6 KH Lib 3/19/12

Number of peaks found: 7 Corr. Area 1: 680.0
 Noise: 0.3

Peak table for sample 4 : UCB6 KH Lib 3/19/12

Peak	Size [bp]	Conc. [pg/μl]	Molarity [pmol/l]	Observations
1	35	125.00	5,411.3	Lower Marker
2	47	141.71	4,566.6	
3	526	19.81	57.1	
4	549	20.41	56.3	
5	665	2,514.11	5,732.3	
6	10,380	75.00	10.9	Upper Marker
7	10,715	0.00	0.0	
8	11,353	0.00	0.0	
9	12,996	0.00	0.0	

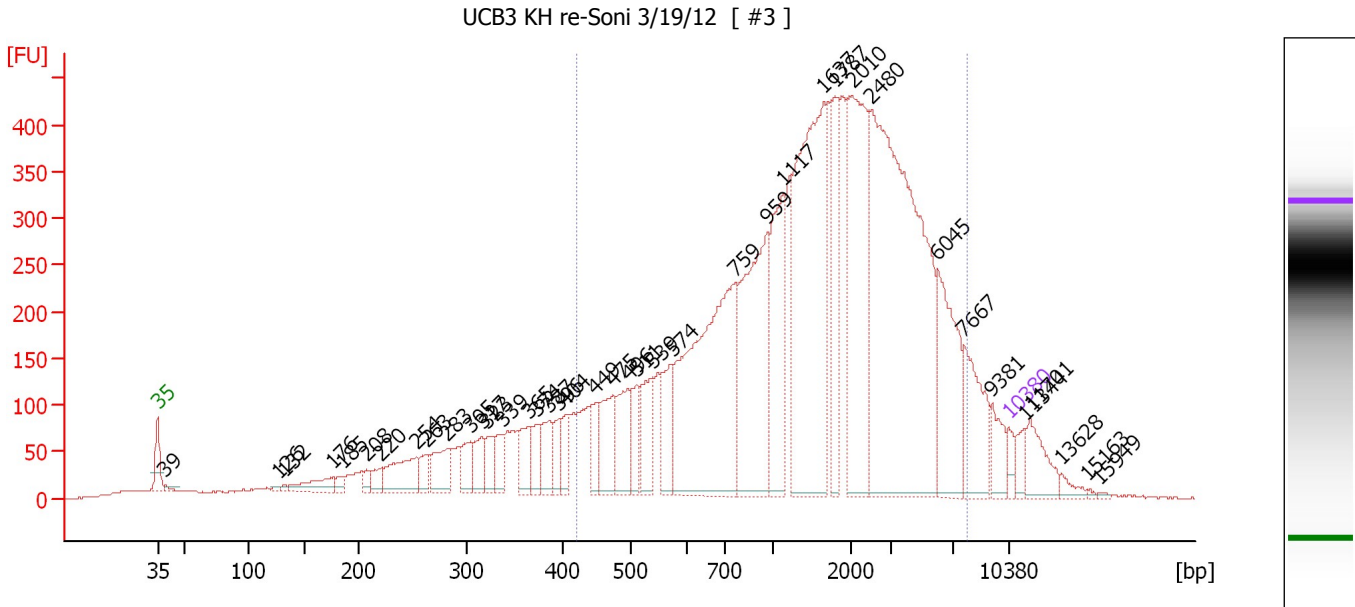
Region table for sample 4 : UCB6 KH Lib 3/19/12

From [bp]	Molarity [pmol/l]	Average Size [bp]	Conc. [pg/μl]	To [bp]	Corr. Area	% of Total	Size distribution in CV [%]	Color
575	5,608.0	666	2,460.90	818	680.0	71	5.7	Blue

Assay Class: High Sensitivity DNA Assay
 Data Path: C:\...ents and Settings\Bioanalyzer\2012-03-19\2012-03-19_003.xad

Created: 3/19/2012 3:15:22 PM
 Modified: 3/19/2012 4:50:55 PM

Electropherogram Summary Continued ...



Overall Results for sample 5 : UCB3 KH re-Soni 3/19/12

Number of peaks found: 40 Corr. Area 1: 8,596.6
 Noise: 0.6

Peak table for sample 5 : UCB3 KH re-Soni 3/19/12


Peak	Size [bp]	Conc. [pg/μl]	Molarity [pmol/l]	Observations
1	35	125.00	5,411.3	Lower Marker
2	39	22.65	876.2	
3	126	21.82	261.4	
4	132	24.17	276.8	
5	176	217.11	1,869.5	
6	185	71.16	582.2	
7	208	70.09	511.7	
8	220	106.53	733.2	
9	254	410.41	2,447.0	
10	263	146.05	840.0	
11	283	300.95	1,613.4	
12	305	206.17	1,024.0	
13	317	184.44	882.6	
14	323	191.04	896.9	
15	339	169.88	760.3	
16	365	211.40	878.1	
17	374	182.51	738.4	
18	387	231.13	905.7	
19	396	164.07	627.1	
20	404	171.44	642.3	
21	449	206.73	697.5	
22	475	397.60	1,268.7	
23	496	374.25	1,142.5	
24	511	216.92	642.9	
25	539	358.88	1,008.0	
26	574	313.39	827.2	

Assay Class: High Sensitivity DNA Assay
 Data Path: C:\...ents and Settings\Bioanalyzer\2012-03-19\2012-03-19_003.xad


Created: 3/19/2012 3:15:22 PM
 Modified: 3/19/2012 4:50:55 PM

Electropherogram Summary Continued ...

... Peak table for sample 5 : UCB3 KH re-Soni 3/19/12

Peak	Size [bp]	Conc. [pg/µl]	Molarity [pmol/l]	Observations
27	759	2,254.30	4,502.3	
28	959	1,376.36	2,175.5	
29	1,117	775.63	1,051.7	
30	1,637	2,052.33	1,900.1	
31	1,787	548.49	465.0	
32	2,010	1,360.19	1,025.1	
33	2,480	3,128.83	1,911.5	
34	6,045	725.66	181.9	
35	7,667	455.86	90.1	
36	9,381	173.04	27.9	
37	 10,380	75.00	10.9	Upper Marker
38	11,344	0.00	0.0	
39	11,701	0.00	0.0	
40	13,628	0.00	0.0	
41	15,163	0.00	0.0	
42	15,949	0.00	0.0	

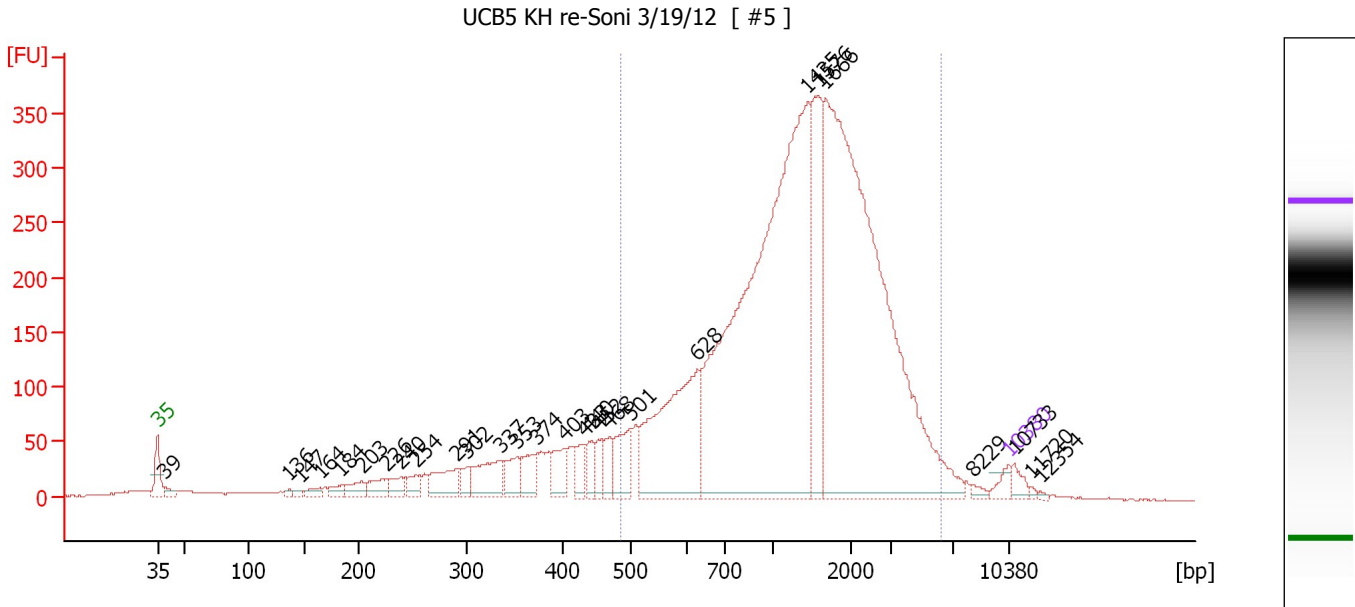
Region table for sample 5 : UCB3 KH re-Soni 3/19/12

From [bp]	Molarity [pmol/l]	Average Size [bp]	Conc. [pg/µl]	To [bp]	Corr. Area	% of Total	Size distribution in CV [%]	Color
423	23,016.9	2,133	16,299.00	7,818	8,596.6	76	81.7	

Assay Class: High Sensitivity DNA Assay
 Data Path: C:\...ents and Settings\Bioanalyzer\2012-03-19\2012-03-19_003.xad

Created: 3/19/2012 3:15:22 PM
 Modified: 3/19/2012 4:50:55 PM

Electropherogram Summary Continued ...



Overall Results for sample 6 : UCB5 KH re-Soni 3/19/12

Number of peaks found: 28 Corr. Area 1: 5,279.8
 Noise: 0.5

Peak table for sample 6 : UCB5 KH re-Soni 3/19/12

Peak	Size [bp]	Conc. [pg/μl]	Molarity [pmol/l]	Observations
1	35	125.00	5,411.3	Lower Marker
2	39	70.14	2,717.6	
3	136	29.12	324.0	
4	147	32.13	331.8	
5	164	77.95	718.8	
6	184	87.86	722.9	
7	203	142.86	1,066.4	
8	226	178.94	1,198.4	
9	240	139.16	879.3	
10	254	126.53	755.2	
11	291	327.75	1,708.4	
12	302	122.77	616.6	
13	337	401.27	1,806.4	
14	353	223.31	957.4	
15	374	239.84	972.0	
16	403	238.66	897.2	
17	433	180.71	632.8	
18	440	139.78	481.0	
19	452	132.76	444.8	
20	468	178.28	576.7	
21	501	354.44	1,072.5	
22	628	1,552.56	3,743.6	
23	1,435	5,448.85	5,752.2	
24	1,576	991.04	952.5	
25	1,666	5,090.40	4,630.5	
26	8,229	33.93	6.2	

Assay Class: High Sensitivity DNA Assay
 Data Path: C:\...ents and Settings\Bioanalyzer\2012-03-19\2012-03-19_003.xad


Created: 3/19/2012 3:15:22 PM
 Modified: 3/19/2012 4:50:55 PM

Electropherogram Summary Continued ...

... Peak table for sample 6 : UCB5 KH re-Soni 3/19/12

Peak	Size [bp]	Conc. [pg/μl]	Molarity [pmol/l]	Observations
27	10,380	75.00	10.9	Upper Marker
28	10,733	0.00	0.0	
29	11,720	0.00	0.0	
30	12,354	0.00	0.0	

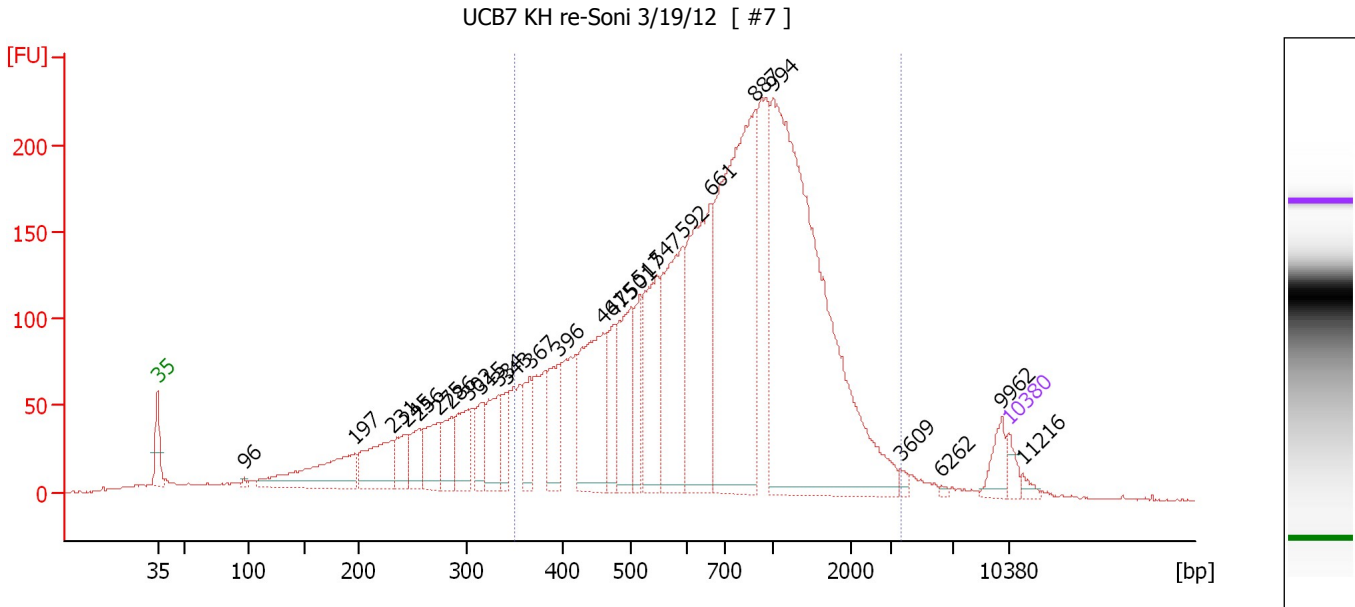
Region table for sample 6 : UCB5 KH re-Soni 3/19/12

From [bp]	Molarity [pmol/l]	Average Size [bp]	Conc. [pg/μl]	To [bp]	Corr. Area	% of Total	Size distribution in CV [%]	Color
484	19,093.3	1,608	13,833.19	6,293	5,279.8	80	62.5	

Assay Class: High Sensitivity DNA Assay
 Data Path: C:\...ents and Settings\Bioanalyzer\2012-03-19\2012-03-19_003.xad

Created: 3/19/2012 3:15:22 PM
 Modified: 3/19/2012 4:50:55 PM

Electropherogram Summary Continued ...



Overall Results for sample 7 : UCB7 KH re-Soni 3/19/12

Number of peaks found: 26 Corr. Area 1: 4,447.3
 Noise: 0.4

Peak table for sample 7 : UCB7 KH re-Soni 3/19/12

Peak	Size [bp]	Conc. [pg/μl]	Molarity [pmol/l]	Observations
1	35	125.00	5,411.3	Lower Marker
2	96	25.19	398.0	
3	197	751.27	5,791.8	
4	231	524.61	3,436.7	
5	245	260.45	1,612.9	
6	256	236.73	1,398.6	
7	275	340.06	1,876.0	
8	286	277.70	1,469.0	
9	302	360.37	1,807.1	
10	315	233.84	1,126.0	
11	334	379.81	1,721.5	
12	343	190.85	844.1	
13	367	264.87	1,093.6	
14	396	431.26	1,652.0	
15	461	943.16	3,101.2	
16	475	367.47	1,172.0	
17	501	647.94	1,958.4	
18	517	318.20	933.2	
19	547	730.72	2,023.1	
20	592	1,059.78	2,711.3	
21	661	1,362.99	3,123.2	
22	887	2,491.58	4,254.5	
23	994	3,766.00	5,741.6	
24	3,609	32.18	13.5	
25	6,262	12.64	3.1	
26	9,962	129.61	19.7	


Assay Class: High Sensitivity DNA Assay
Data Path: C:\...ents and Settings\Bioanalyzer\2012-03-19\2012-03-19_003.xad

Created: 3/19/2012 3:15:22 PM
Modified: 3/19/2012 4:50:55 PM

Electropherogram Summary Continued ...**... Peak table for sample 7 : UCB7 KH re-Soni 3/19/12**

Peak	Size [bp]	Conc. [pg/ μ l]	Molarity [pmol/l]	Observations
27	 10,380	75.00	10.9	Upper Marker
28	11,216	0.00	0.0	

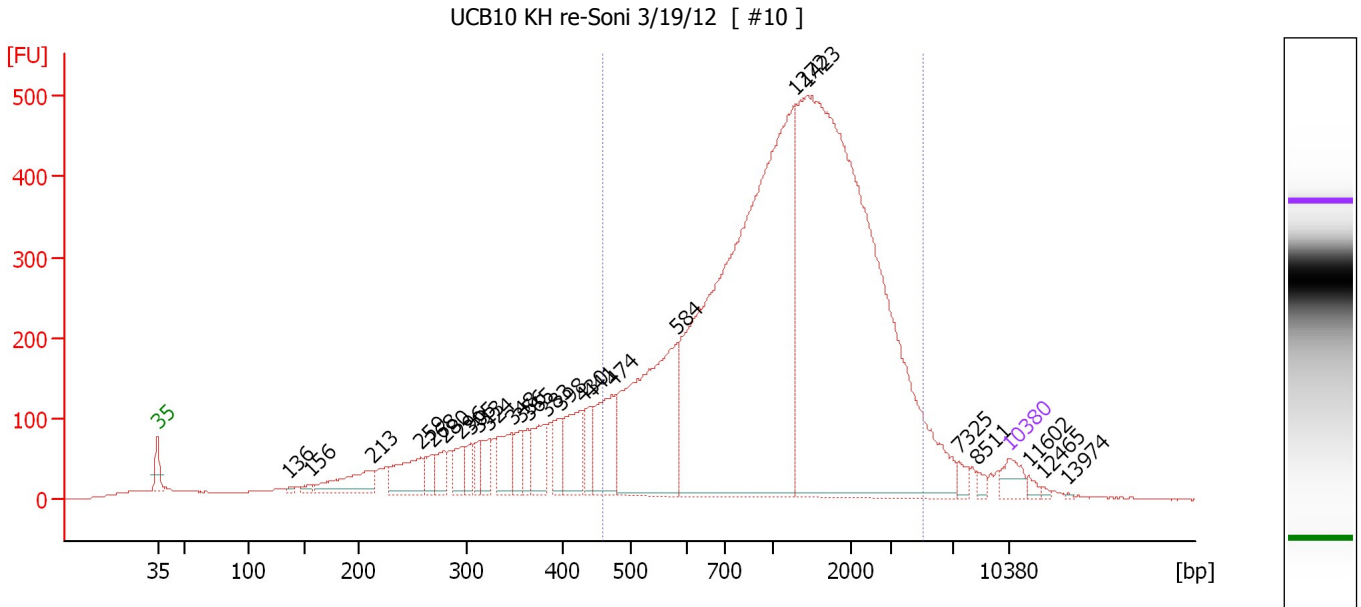
Region table for sample 7 : UCB7 KH re-Soni 3/19/12

From [bp]	Molarity [pmol/l]	Average Size [bp]	Conc. [pg/ μ l]	To [bp]	Corr. Area	% of Total	Size distribution in CV [%]	Color
351	33,722.3	886	14,547.97	3,699	4,447.3	77	56.5	

Assay Class: High Sensitivity DNA Assay
 Data Path: C:\...ents and Settings\Bioanalyzer\2012-03-19\2012-03-19_003.xad

Created: 3/19/2012 3:15:22 PM
 Modified: 3/19/2012 4:50:55 PM

Electropherogram Summary Continued ...



Overall Results for sample 8 : UCB10 KH re-Soni 3/19/12

Number of peaks found: 26 Corr. Area 1: 8,365.7
 Noise: 0.4

Peak table for sample 8 : UCB10 KH re-Soni 3/19/12

Peak	Size [bp]	Conc. [pg/μl]	Molarity [pmol/l]	Observations
1	35	125.00	5,411.3	Lower Marker
2	136	15.83	175.9	
3	156	32.14	311.5	
4	213	254.45	1,812.2	
5	259	263.46	1,543.9	
6	268	92.74	523.3	
7	280	109.24	590.9	
8	296	111.65	572.4	
9	305	80.39	398.7	
10	313	83.07	401.6	
11	324	90.37	422.0	
12	348	187.28	815.9	
13	356	110.84	471.2	
14	365	91.71	380.7	
15	383	185.03	731.3	
16	398	121.54	462.6	
17	430	278.08	979.5	
18	441	127.86	438.9	
19	474	341.93	1,092.3	
20	584	1,081.98	2,809.4	
21	1,272	3,360.91	4,004.7	
22	1,423	3,969.58	4,226.4	
23	7,325	40.79	8.4	
24	8,511	22.40	4.0	
25	10,380	75.00	10.9	Upper Marker
26	11,602	0.00	0.0	


Assay Class: High Sensitivity DNA Assay
Data Path: C:\...ents and Settings\Bioanalyzer\2012-03-19\2012-03-19_003.xad

Created: 3/19/2012 3:15:22 PM
Modified: 3/19/2012 4:50:55 PM

Electropherogram Summary Continued ...**... Peak table for sample 8 : UCB10 KH re-Soni 3/19/12**

Peak	Size [bp]	Conc. [pg/μl]	Molarity [pmol/l]	Observations
27	12,465	0.00	0.0	
28	13,974	0.00	0.0	

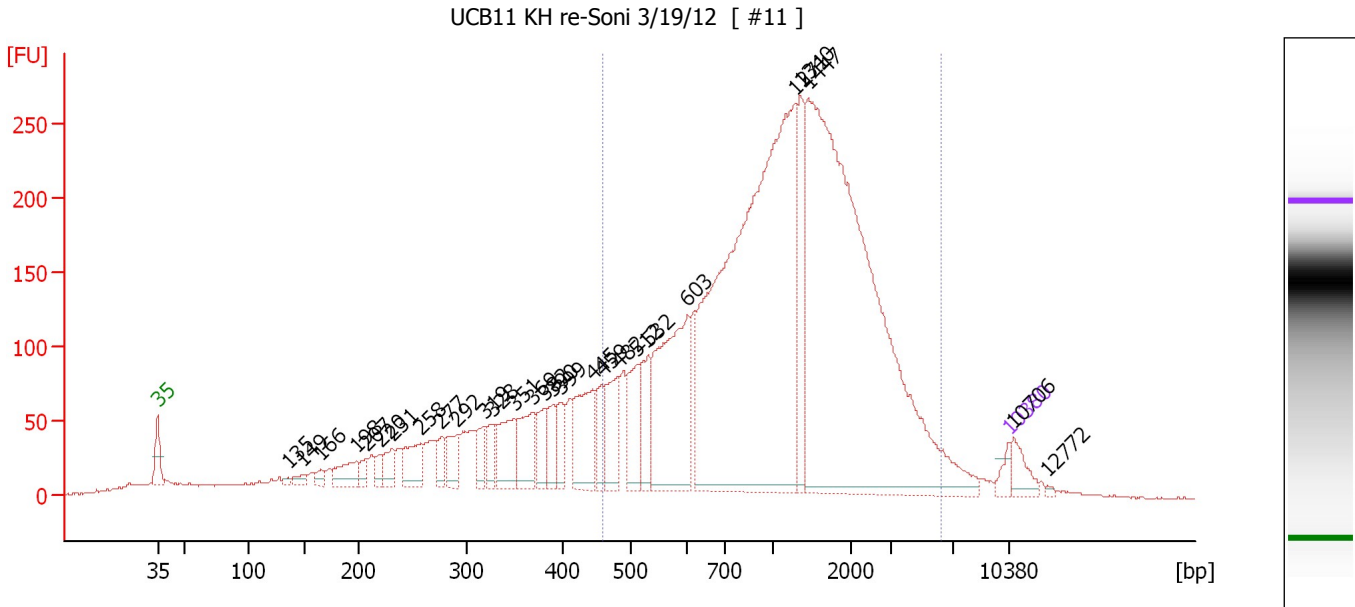
Region table for sample 8 : UCB10 KH re-Soni 3/19/12

From [bp]	Molarity [pmol/l]	Average Size [bp]	Conc. [pg/μl]	To [bp]	Corr. Area	% of Total	Size distribution in CV [%]	Color
460	13,930.9	1,423	8,834.50	5,144	8,365.7	74	62.2	

Assay Class: High Sensitivity DNA Assay
 Data Path: C:\...ents and Settings\Bioanalyzer\2012-03-19\2012-03-19_003.xad

Created: 3/19/2012 3:15:22 PM
 Modified: 3/19/2012 4:50:55 PM

Electropherogram Summary Continued ...



Overall Results for sample 9 : UCB11 KH re-Soni 3/19/12

Number of peaks found: 28 Corr. Area 1: 4,504.1
 Noise: 0.7

Peak table for sample 9 : UCB11 KH re-Soni 3/19/12


Peak	Size [bp]	Conc. [pg/μl]	Molarity [pmol/l]	Observations
1	35	125.00	5,411.3	Lower Marker
2	135	31.22	349.9	
3	149	74.30	757.1	
4	166	73.17	668.7	
5	198	270.43	2,066.2	
6	207	102.55	749.9	
7	220	110.17	758.7	
8	231	183.96	1,206.0	
9	258	338.42	1,988.6	
10	277	149.09	814.6	
11	292	244.23	1,268.2	
12	319	202.46	960.6	
13	328	195.51	903.1	
14	351	419.59	1,811.8	
15	369	408.43	1,675.1	
16	382	274.23	1,088.2	
17	390	208.04	807.3	
18	399	226.69	861.9	
19	445	584.14	1,988.9	
20	459	260.54	860.1	
21	482	432.88	1,361.8	
22	512	428.22	1,268.1	
23	532	363.92	1,036.8	
24	603	1,432.39	3,600.2	
25	1,271	5,376.64	6,407.0	
26	1,340	612.69	692.6	

Assay Class: High Sensitivity DNA Assay
 Data Path: C:\...ents and Settings\Bioanalyzer\2012-03-19\2012-03-19_003.xad


Created: 3/19/2012 3:15:22 PM
 Modified: 3/19/2012 4:50:55 PM

Electropherogram Summary Continued ...

... Peak table for sample 9 : UCB11 KH re-Soni 3/19/12

Peak	Size [bp]	Conc. [pg/μl]	Molarity [pmol/l]	Observations
27	1,447	5,655.47	5,921.0	
28	 10,380	75.00	10.9	Upper Marker
29	10,706	0.00	0.0	
30	12,772	0.00	0.0	

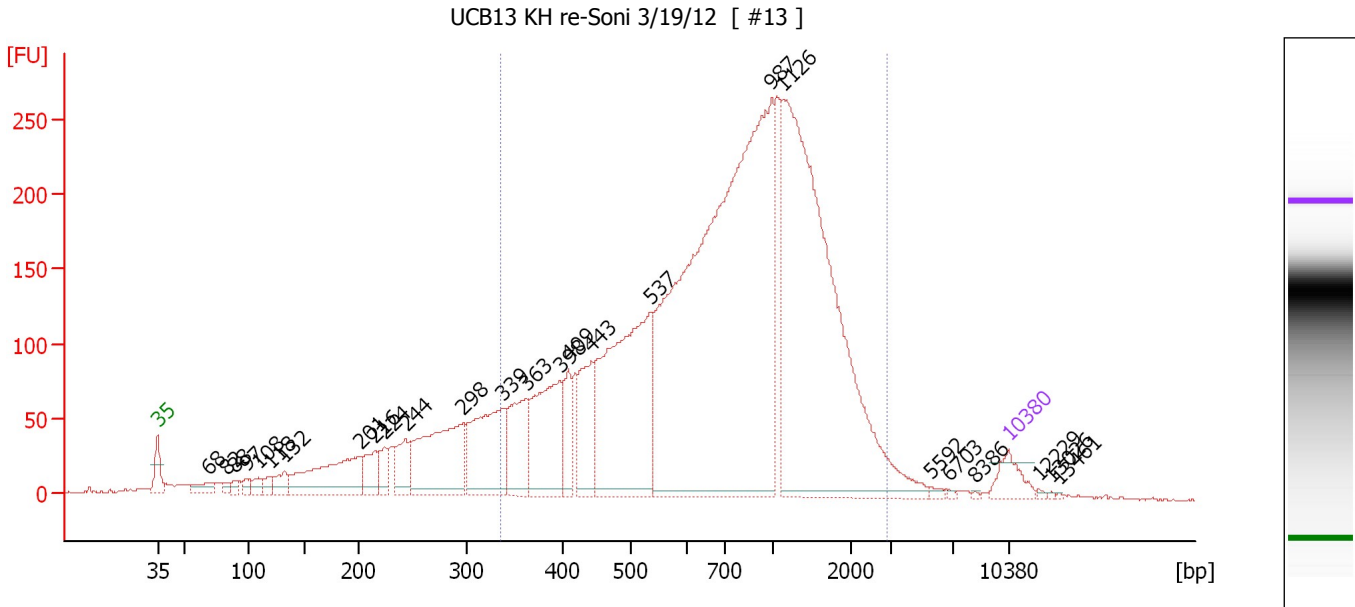
Region table for sample 9 : UCB11 KH re-Soni 3/19/12

From [bp]	Molarity [pmol/l]	Average Size [bp]	Conc. [pg/μl]	To [bp]	Corr. Area	% of Total	Size distribution in CV [%]	Color
458	24,950.8	1,422	15,385.36	6,299	4,504.1	71	69.5	

Assay Class: High Sensitivity DNA Assay
 Data Path: C:\...ents and Settings\Bioanalyzer\2012-03-19\2012-03-19_003.xad

Created: 3/19/2012 3:15:22 PM
 Modified: 3/19/2012 4:50:55 PM

Electropherogram Summary Continued ...



Overall Results for sample 10 : UCB13 KH re-Soni 3/19/12

Number of peaks found: 26 Corr. Area 1: 4,941.2
 Noise: 0.5

Peak table for sample 10 : UCB13 KH re-Soni 3/19/12

Peak	Size [bp]	Conc. [pg/µl]	Molarity [pmol/l]	Observations
1	35	125.00	5,411.3	Lower Marker
2	68	66.66	1,495.4	
3	82	24.56	451.8	
4	88	26.68	459.7	
5	97	32.18	501.6	
6	108	42.76	599.2	
7	118	43.05	550.9	
8	132	74.32	853.5	
9	201	410.28	3,091.6	
10	216	122.94	864.2	
11	224	76.61	517.2	
12	244	138.40	859.6	
13	298	542.33	2,758.1	
14	339	469.36	2,100.8	
15	363	260.26	1,085.6	
16	398	431.76	1,644.2	
17	409	132.67	491.2	
18	443	258.43	883.4	
19	537	1,028.80	2,902.1	
20	987	2,921.85	4,484.4	
21	1,126	1,968.73	2,648.3	
22	5,592	11.11	3.0	
23	6,703	5.69	1.3	
24	8,386	3.68	0.7	
25	10,380	75.00	10.9	Upper Marker
26	12,229	0.00	0.0	


Assay Class: High Sensitivity DNA Assay
Data Path: C:\...ents and Settings\Bioanalyzer\2012-03-19\2012-03-19_003.xad

Created: 3/19/2012 3:15:22 PM
Modified: 3/19/2012 4:50:55 PM

Electropherogram Summary Continued ...**... Peak table for sample 10 : UCB13 KH re-Soni 3/19/12**

Peak	Size [bp]	Conc. [pg/ μ l]	Molarity [pmol/l]	Observations
27	13,026	0.00	0.0	
28	13,461	0.00	0.0	

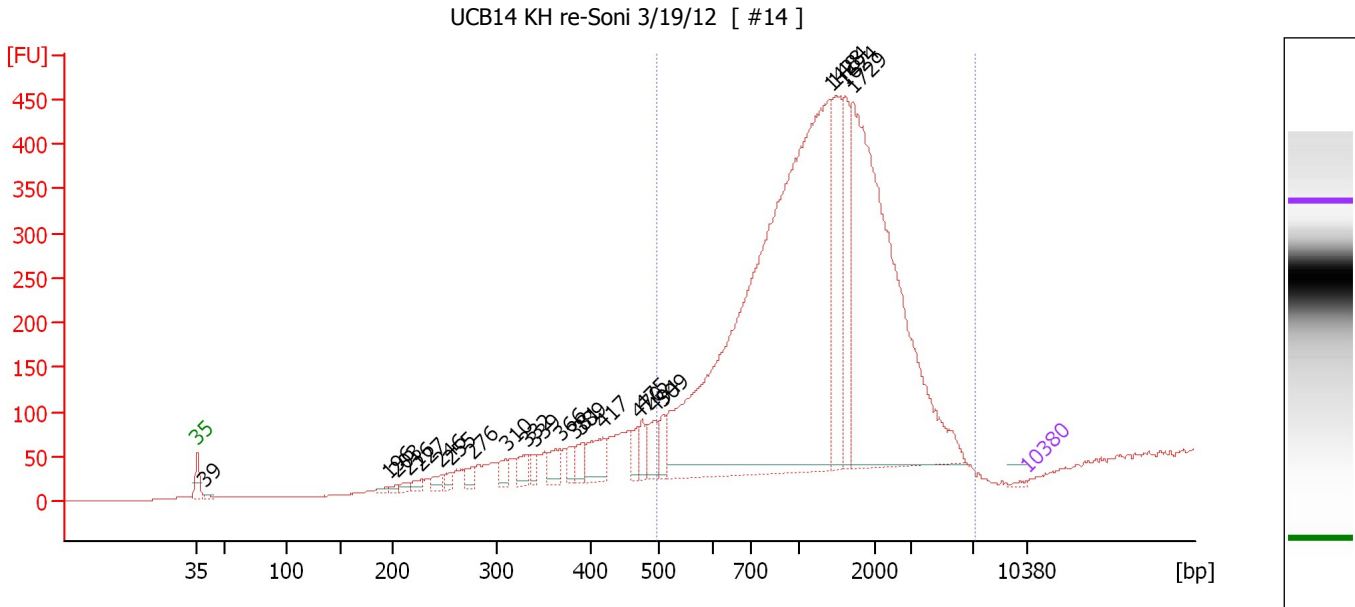
Region table for sample 10 : UCB13 KH re-Soni 3/19/12

From [bp]	Molarity [pmol/l]	Average Size [bp]	Conc. [pg/ μ l]	To [bp]	Corr. Area	% of Total	Size distribution in CV [%]	Color
337	17,371.2	921	7,652.29	2,925	4,941.2	80	54.1	

Assay Class: High Sensitivity DNA Assay
 Data Path: C:\...ents and Settings\Bioanalyzer\2012-03-19\2012-03-19_003.xad

Created: 3/19/2012 3:15:22 PM
 Modified: 3/19/2012 4:50:55 PM

Electropherogram Summary Continued ...



Overall Results for sample 11 : UCB14 KH re-Soni 3/19/12

Number of peaks found: 23 Corr. Area 1: 6,038.0
 Noise: 0.4

Peak table for sample 11 : UCB14 KH re-Soni 3/19/12


Peak	Size [bp]	Conc. [pg/μl]	Molarity [pmol/l]	Observations
1	35	125.00	5,411.3	Lower Marker
2	39	218.88	8,531.8	
3	196	210.49	1,625.6	
4	203	186.93	1,396.7	
5	216	312.39	2,195.9	
6	227	396.14	2,646.7	
7	246	519.33	3,203.0	
8	255	399.08	2,372.6	
9	276	597.21	3,281.1	
10	310	637.25	3,115.1	
11	332	786.84	3,596.2	
12	339	512.93	2,289.5	
13	366	972.68	4,025.5	
14	381	626.91	2,490.3	
15	389	734.45	2,858.0	
16	417	1,682.75	6,114.3	
17	470	646.70	2,085.7	
18	475	764.72	2,437.3	
19	494	1,198.18	3,676.5	
20	509	865.37	2,575.9	
21	1,428	39,889.20	42,318.3	
22	1,484	4,951.18	5,054.3	
23	1,624	3,185.35	2,971.2	
24	1,729	21,283.93	18,646.5	
25	10,380	75.00	10.9	Upper Marker

Assay Class: High Sensitivity DNA Assay
Data Path: C:\...ents and Settings\Bioanalyzer\2012-03-19\2012-03-19_003.xad

Created: 3/19/2012 3:15:22 PM
Modified: 3/19/2012 4:50:55 PM

Electropherogram Summary Continued ...

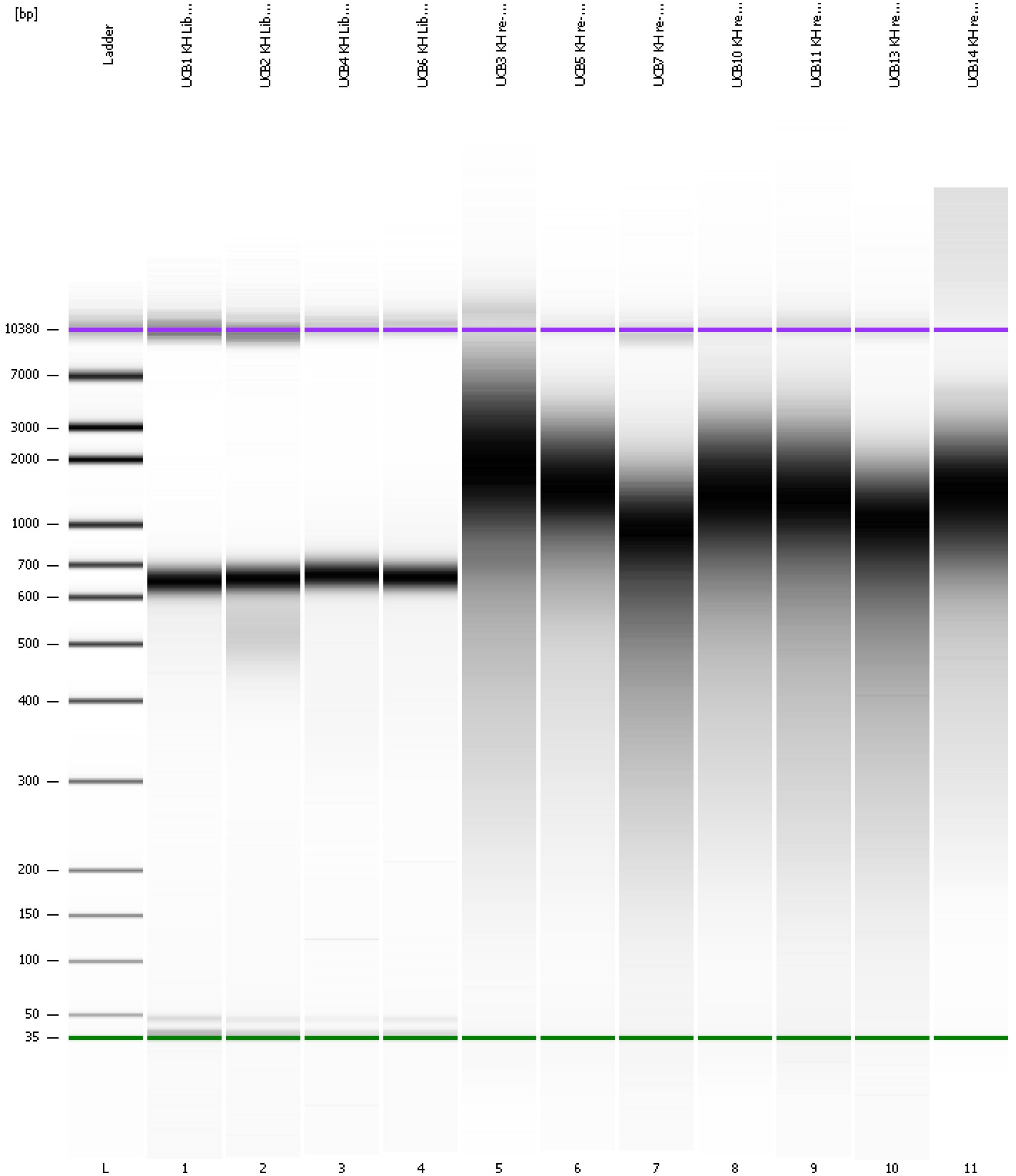
... Region table for sample 11 : UCB14 KH re-Soni 3/19/12

From [bp]	Molarity [pmol/l]	Average Size [bp]	Conc. [pg/μl]	To [bp]	Corr. Area	% of Total	Size distribution in CV [%]	Color
499	106,019.3	1,474	74,881.14	7,160	6,038.0	87	58.7	

Assay Class: High Sensitivity DNA Assay
Data Path: C:\...ents and Settings\Bioanalyzer\2012-03-19\2012-03-19_003.xad

Created: 3/19/2012 3:15:22 PM
Modified: 3/19/2012 4:50:55 PM

Gel Image



Assay Class: High Sensitivity DNA Assay
 Data Path: C:\...ents and Settings\Bioanalyzer\2012-03-19\2012-03-19_003.xad

Created: 3/19/2012 3:15:22 PM
 Modified: 3/19/2012 4:50:55 PM

Run Logbook

Description	Number	Source	Category	Sub Category	Time	Time Zone	User	Host
Run ended on port 1 (Number of wells acquired: 12)		Instrument	Run		3/19/2012 3:56:41 PM	(GMT --07:00) Pacific Standard Time	UC Davis	D8XSMGH1
Run started on port 1 (File: C:\Documents and Settings\Bioanalyzer\2012-03-19\2012-03-19_003.xad)		Instrument	Run		3/19/2012 3:15:27 PM	(GMT --07:00) Pacific Standard Time	UC Davis	D8XSMGH1
Product Number : G2938B		Instrument	Run		3/19/2012 3:15:27 PM	(GMT --07:00) Pacific Standard Time	UC Davis	D8XSMGH1
Name :		Instrument	Run		3/19/2012 3:15:27 PM	(GMT --07:00) Pacific Standard Time	UC Davis	D8XSMGH1
Vendor : Agilent Technologies		Instrument	Run		3/19/2012 3:15:27 PM	(GMT --07:00) Pacific Standard Time	UC Davis	D8XSMGH1
Serial# : DE13701086		Instrument	Run		3/19/2012 3:15:27 PM	(GMT --07:00) Pacific Standard Time	UC Davis	D8XSMGH1
Firmware : C.01.069		Instrument	Run		3/19/2012 3:15:27 PM	(GMT --07:00) Pacific Standard Time	UC Davis	D8XSMGH1
Cartridge : Electrode		Instrument	Run		3/19/2012 3:15:27 PM	(GMT --07:00) Pacific Standard Time	UC Davis	D8XSMGH1